



TRIPLE COMBO LOG

Company RITCHIE EXPLORATION, INC.

Well #1 S&E RANCH 35B

Field WILDCAT

County HODGEMAN State KANSAS

Location: API #: 15-083-22035-0000

1628' FNL & 382' FWL

SEC 35 TWP 23S RGE 22W

Permanent Datum GROUND LEVEL Elevation 2213
Log Measured From KELLY BUSHING 13' A.G.L
Drilling Measured From KELLY BUSHING

Other Services
CDL/CNL/DIL
MEL/SONIC

Elevation

K.B. 2226
D.F. 2224
G.L. 2213

Date	10/27/23
Run Number	ONE
Depth Driller	4565
Depth Logger	4564
Bottom Logged Interval	4562
Top Log Interval	3700
Casing Driller	8.625@268
Casing Logger	268
Bit Size	7.785
Type Fluid in Hole	CHEMICAL MUD
Density / Viscosity	9.3/48
pH / Fluid Loss	9.5/9.6
Source of Sample	FLOWLINE
Rm @ Meas. Temp	.520@46F
Rmf @ Meas. Temp	.390@46F
Rmc @ Meas. Temp	.624@46F
Source of Rmf / Rmc	MEASUREMENT
Rm @ BHT	.198@121F
Time Circulation Stopped	2.5 HOURS
Time Logger on Bottom	11:30 A.M.
Maximum Recorded Temperature	121F
Equipment Number	922339
Location	HAYS, KANSAS
Recorded By	JEFF LUEBBERS
Witnessed By	JOHN GOLDSMITH
	JEREMY PASEK

<<< Fold Here >>>

All interpretations are opinions based on inferences from electrical or other measurements and we cannot and do not guarantee the accuracy or correctness of any interpretation, and we shall not, except in the case of gross or willful negligence on our part, be liable or responsible for any loss, costs, damages, or expenses incurred or sustained by anyone resulting from any interpretation made by any of our officers, agents or employees. These interpretations are also subject to our general terms and conditions set out in our current Price Schedule.

15-083-22035-0000

Comments

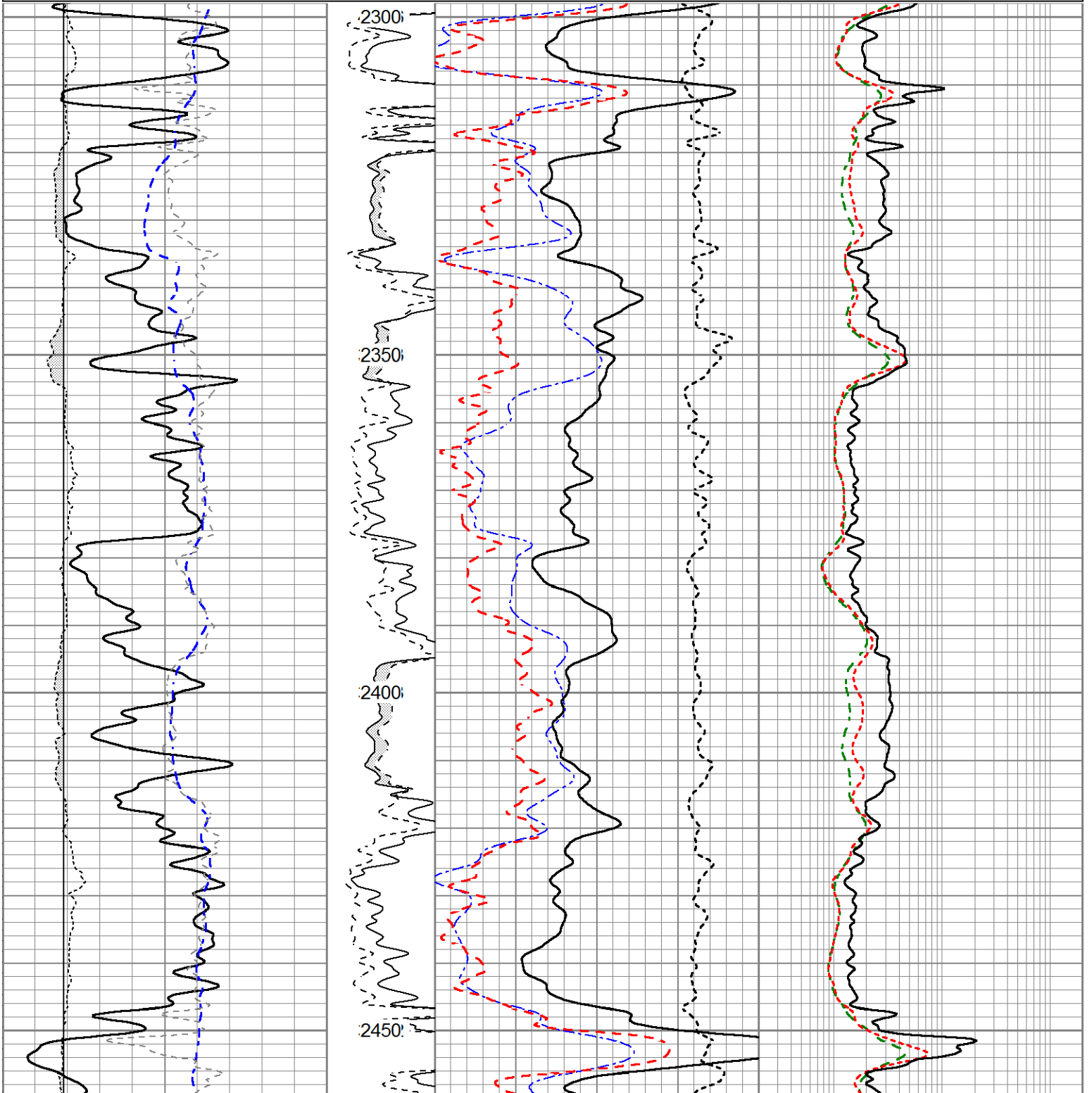
THANK YOU FOR USING ELI WIRELINE HAYS. KANSAS (785) 628-6395
DIRECTIONS
HANSTON, KS., (HWY 156 & RD. 228) 8S. TO STOP SIGN, CONTINUE S. @CATTLE GUARD

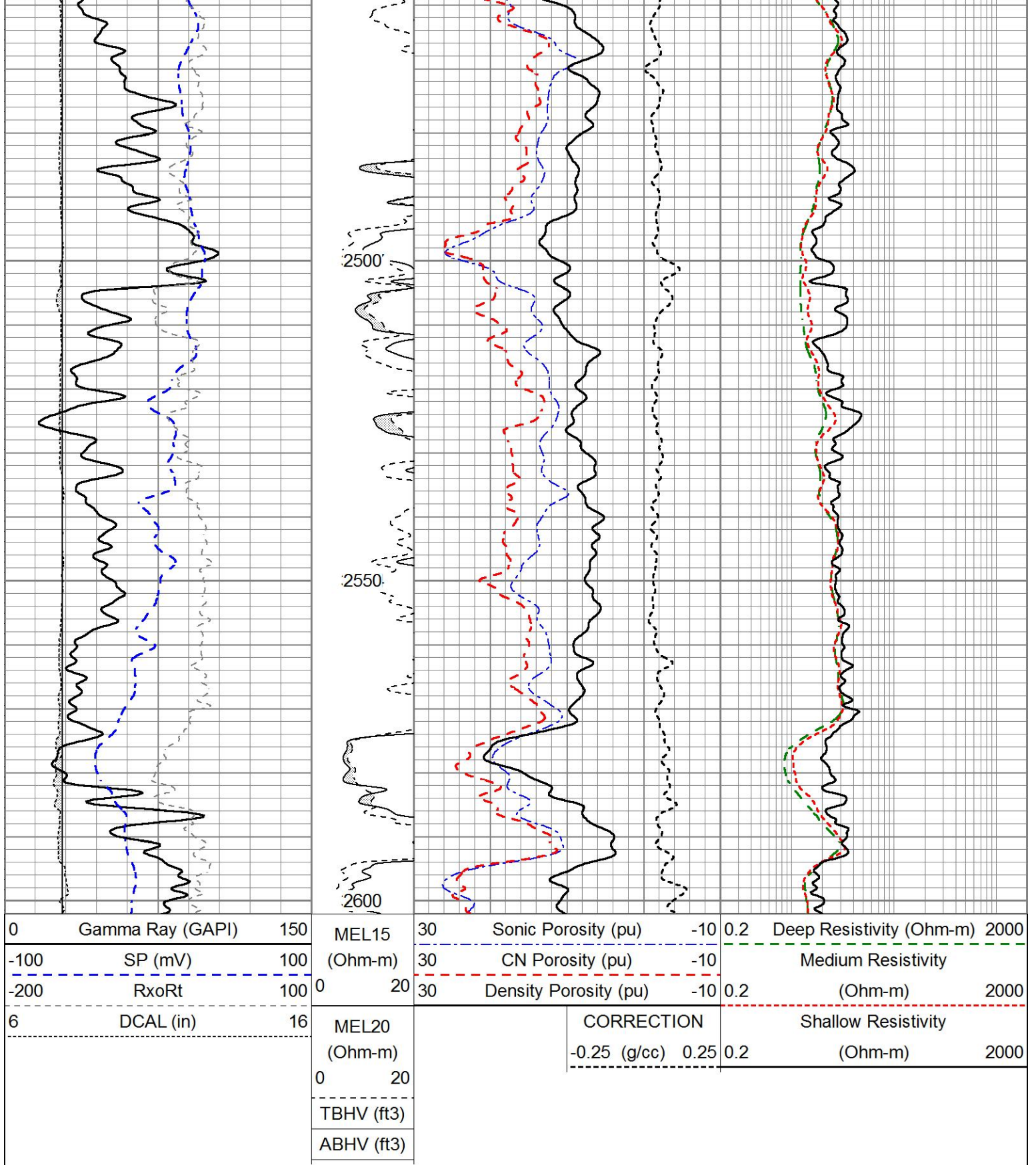


UPPER SECTION

Database File 8331pe.db
 Dataset Pathname pass3.2U
 Presentation Format _ritchie
 Dataset Creation Fri Oct 27 15:49:54 2023
 Charted by Depth in Feet scaled 1:240

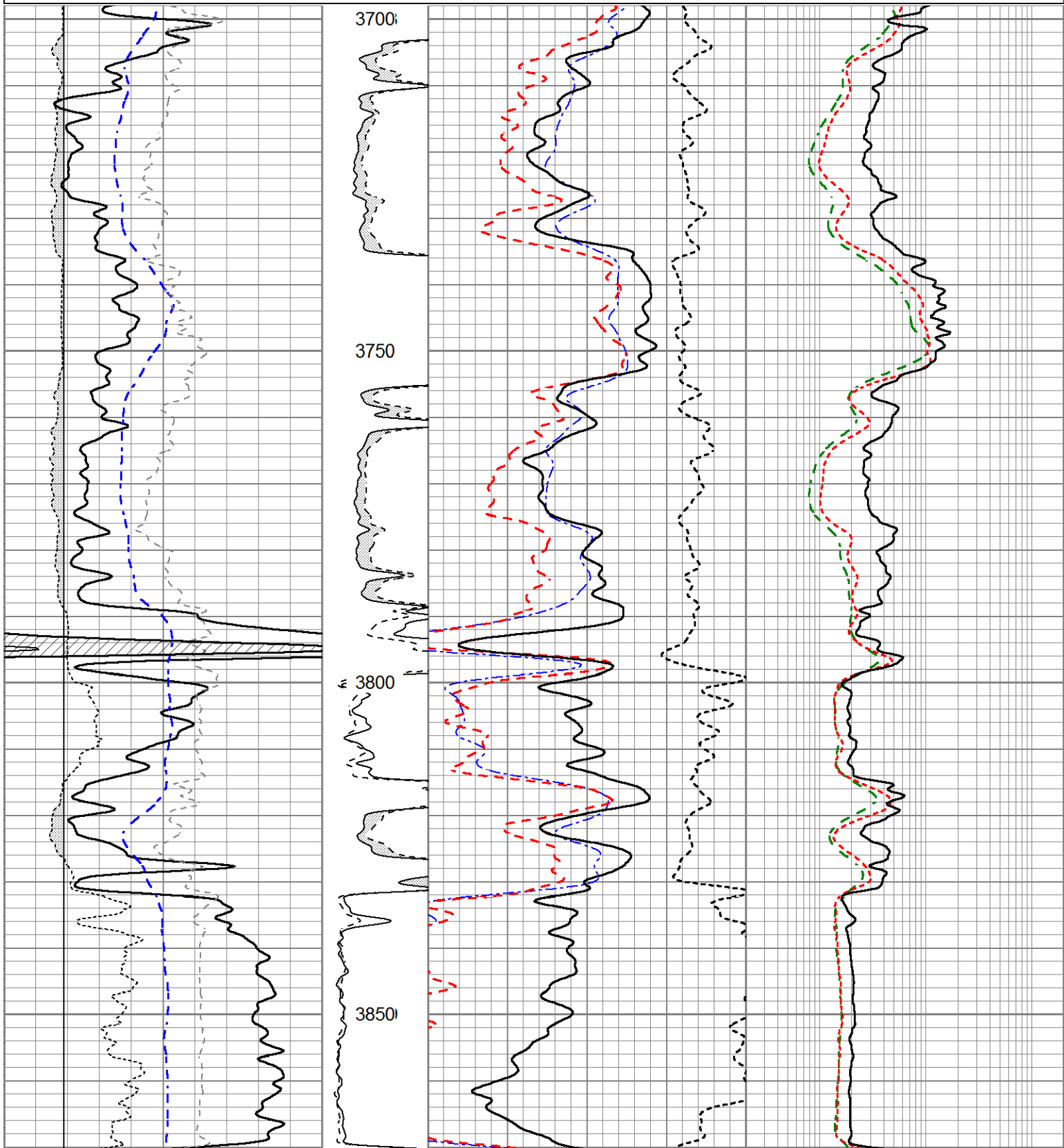
0	Gamma Ray (GAPI)	150	MEL15	30	Sonic Porosity (pu)	-10	0.2	Deep Resistivity (Ohm-m)	2000
-100	SP (mV)	100	(Ohm-m)	30	CN Porosity (pu)	-10		Medium Resistivity	
-200	RxoRt	100	0 20	30	Density Porosity (pu)	-10	0.2	(Ohm-m)	2000
6	DCAL (in)	16	MEL20		CORRECTION			Shallow Resistivity	
			(Ohm-m)		-0.25 (g/cc) 0.25		0.2	(Ohm-m)	2000
			0 20						
			TBHV (ft3)						
			ABHV (ft3)						

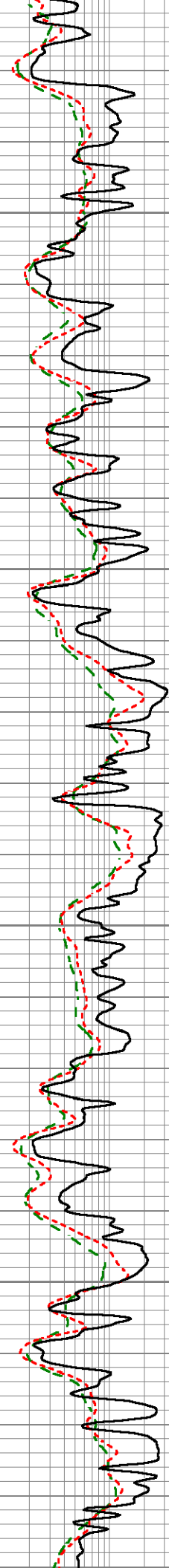
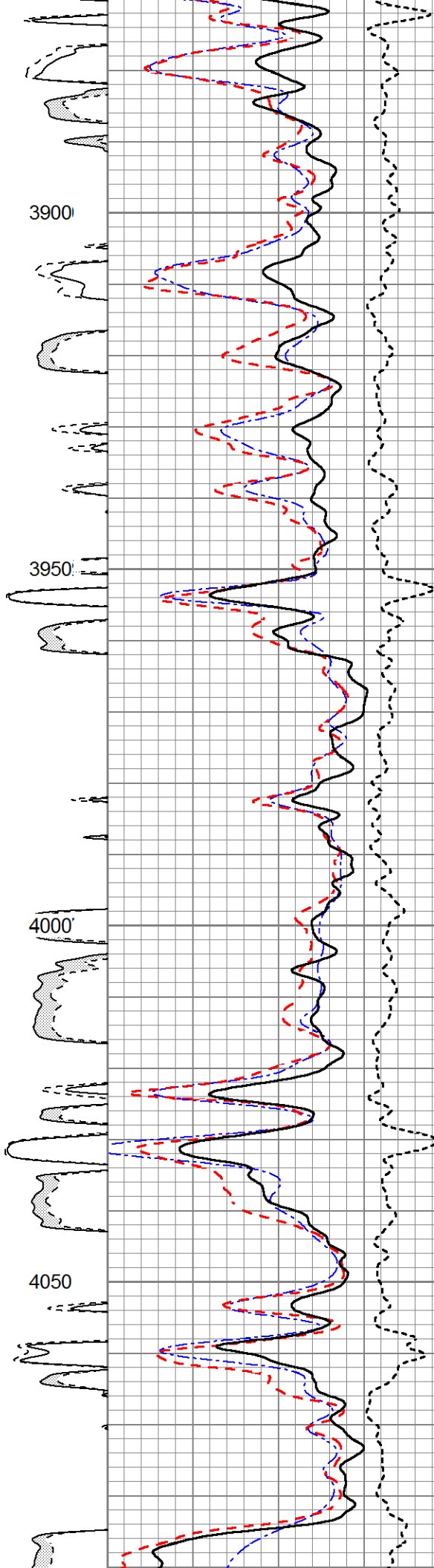
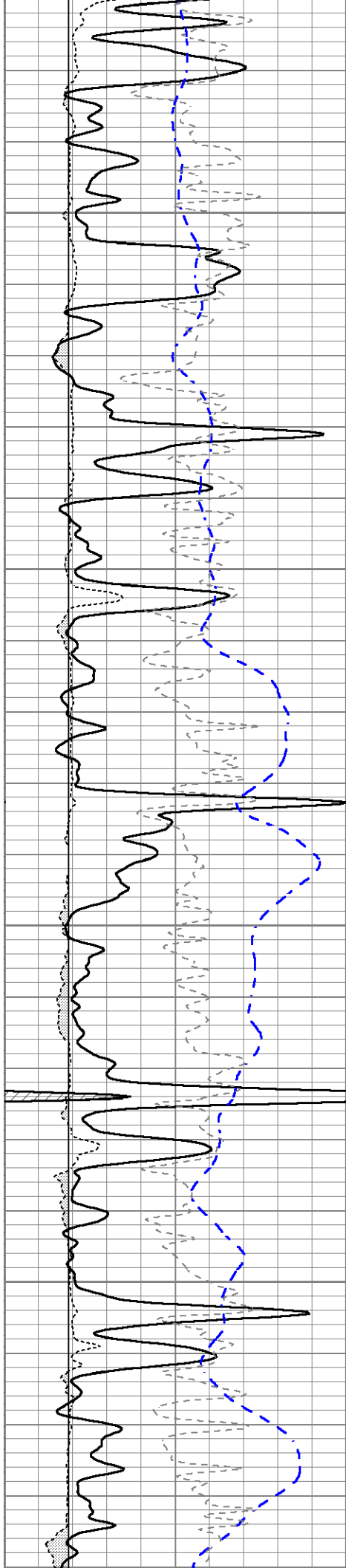


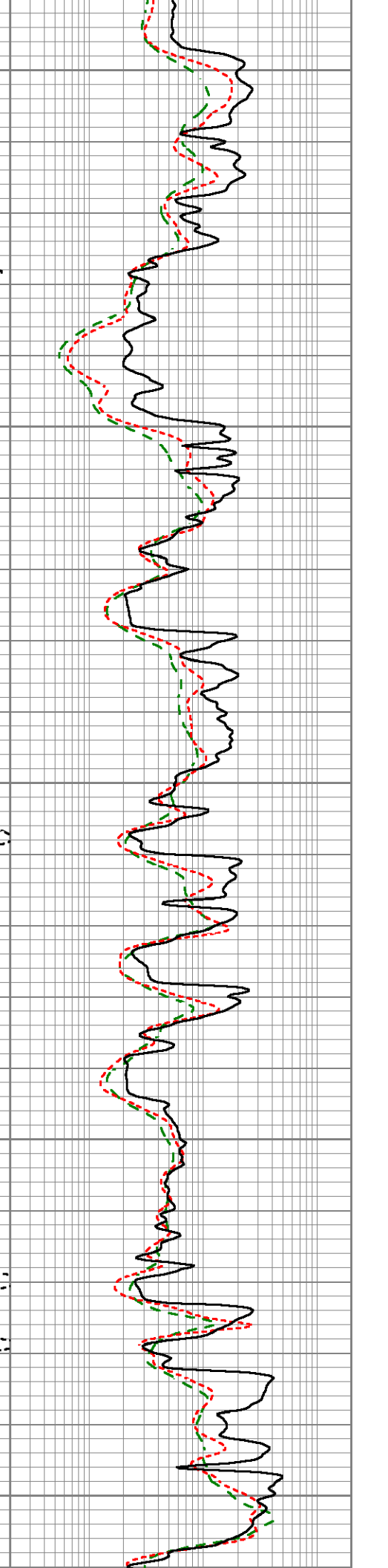
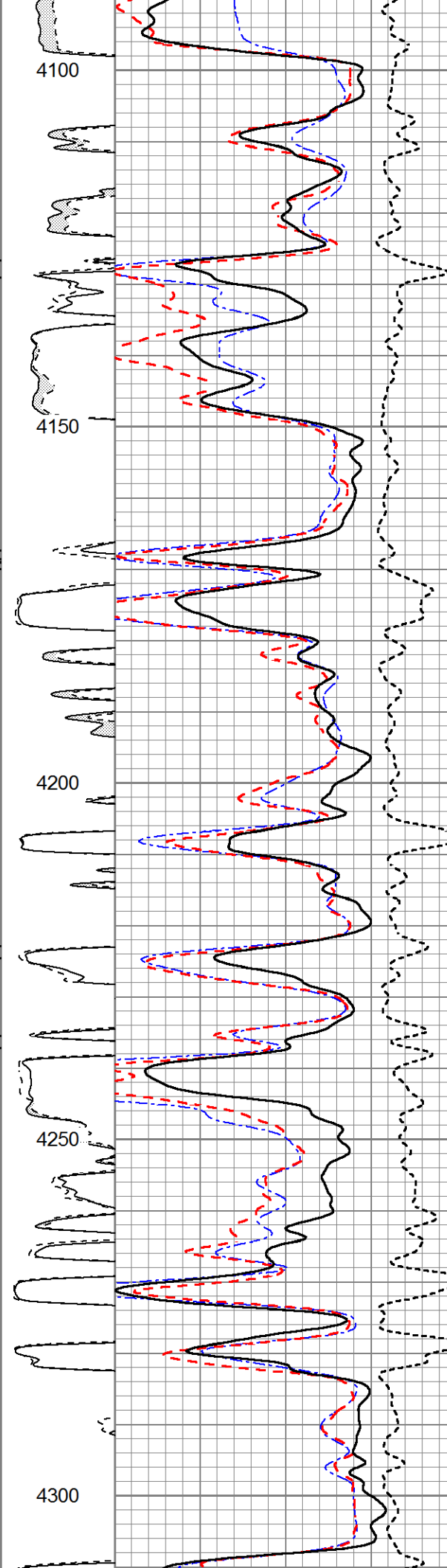
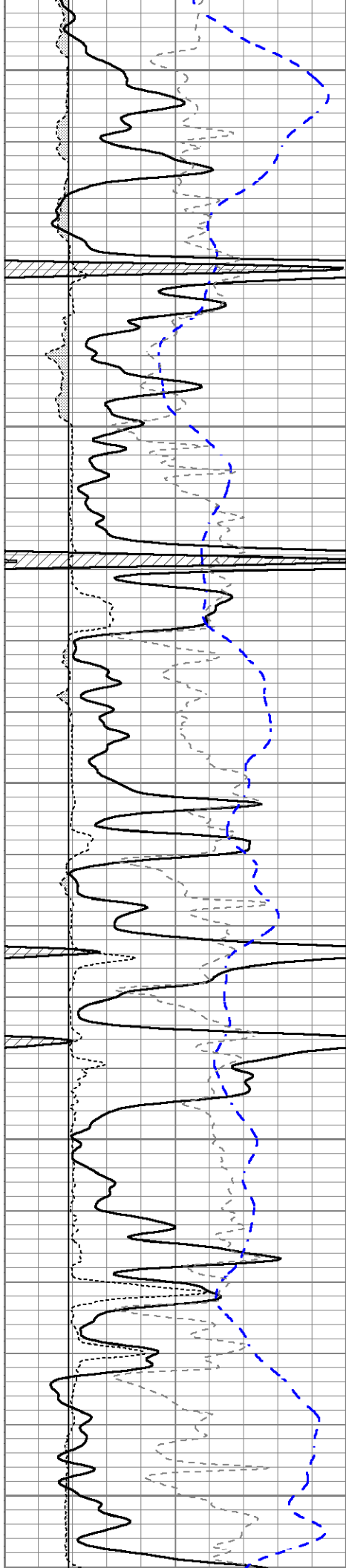


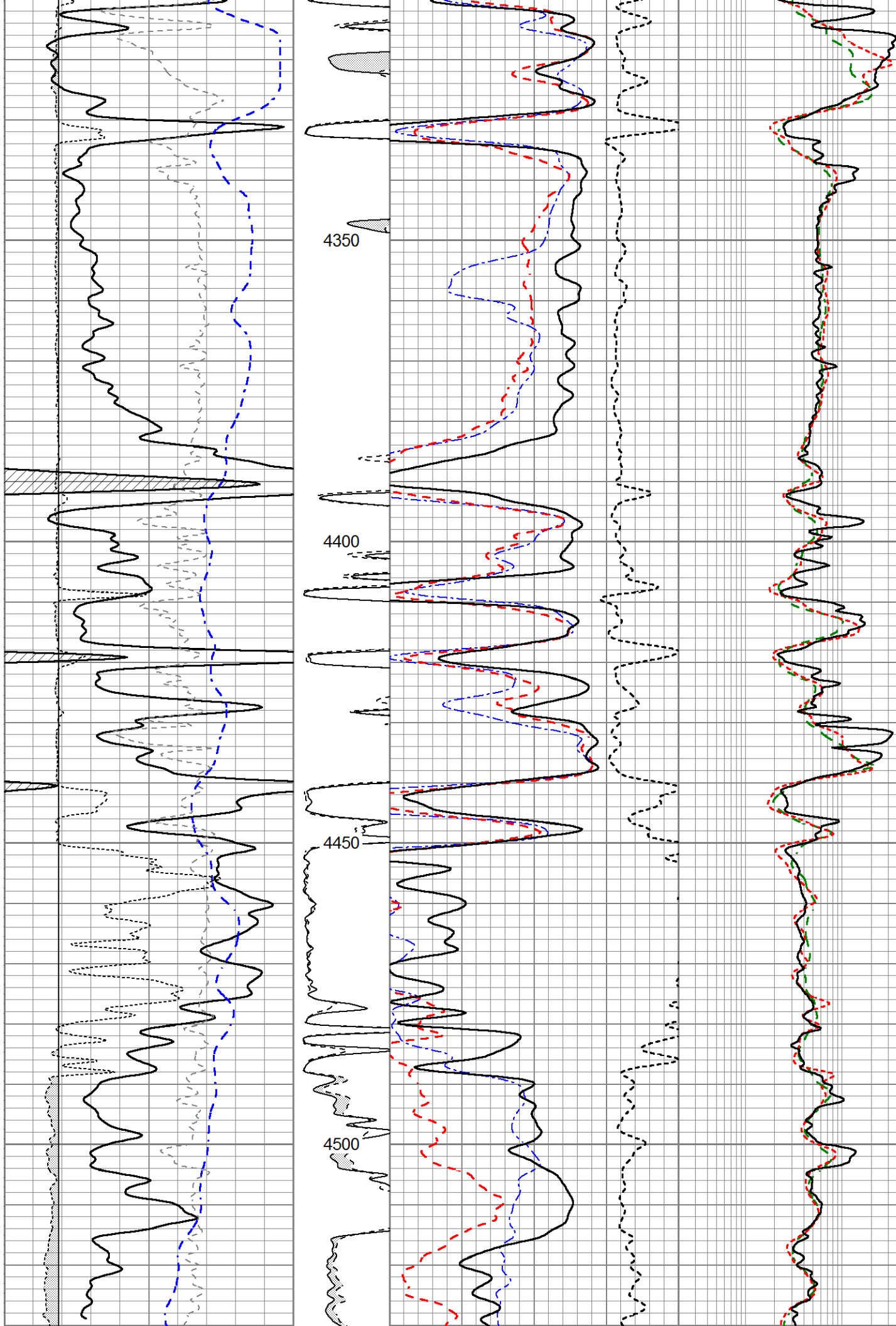
MAIN SECTION

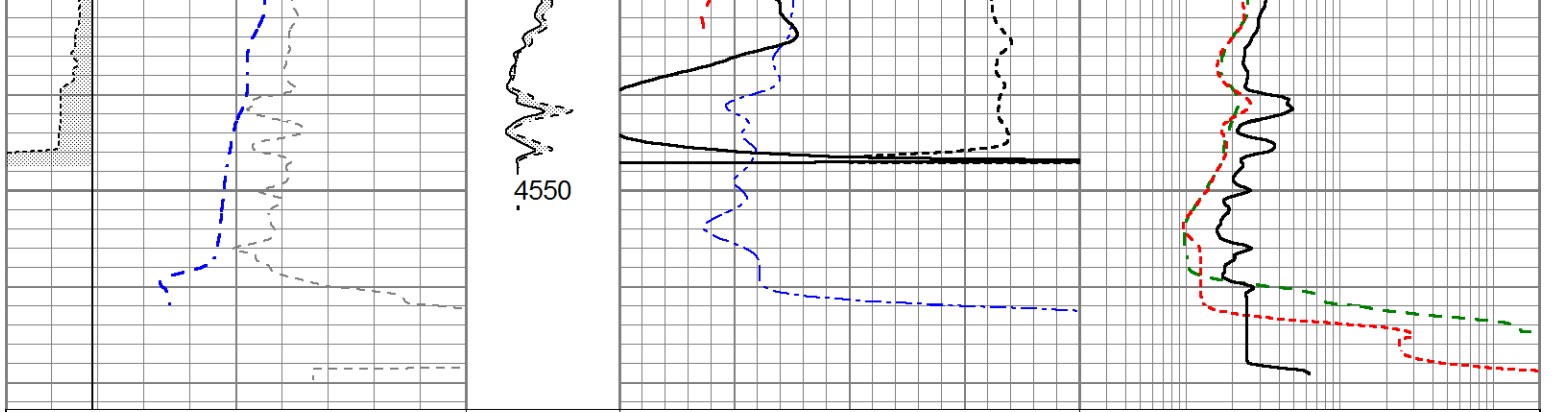
0	Gamma Ray (GAPI)	150	MEL15	30	Sonic Porosity (pu)	-10	0.2	Deep Resistivity (Ohm-m)	2000
-100	SP (mV)	100	(Ohm-m)	30	CN Porosity (pu)	-10		Medium Resistivity	
-200	RxoRt	100	0 20	30	Density Porosity (pu)	-10	0.2	(Ohm-m)	2000
6	DCAL (in)	16	MEL20		CORRECTION			Shallow Resistivity	
			(Ohm-m)		-0.25 (g/cc) 0.25		0.2	(Ohm-m)	2000
			0 20						
			TBHV (ft3)						
			ABHV (ft3)						











0	Gamma Ray (GAPI)	150	MEL15	30	Sonic Porosity (pu)	-10	0.2	Deep Resistivity (Ohm-m)	2000
-100	SP (mV)	100	(Ohm-m)	30	CN Porosity (pu)	-10		Medium Resistivity	
-200	RxoRt	100	0 20	30	Density Porosity (pu)	-10	0.2	(Ohm-m)	2000
6	DCAL (in)	16	MEL20		CORRECTION			Shallow Resistivity	
			(Ohm-m)		-0.25 (g/cc)	0.25	0.2	(Ohm-m)	2000
			0 20						
			TBHV (ft3)						
			ABHV (ft3)						