



**TRIPLE COMBO  
LOG**

Company RITCHIE EXPLORATION, INC.  
Well PITTMAN 12A #2  
Field LOGAN TOWNSHIP  
County ROOKS  
State KANSAS

Company RITCHIE EXPLORATION, INC.  
Well PITTMAN 12A #2  
Field LOGAN TOWNSHIP  
County ROOKS State KANSAS

Location: 657 FNL & 849 FEL  
W2 - NE - NE  
SEC 12 TWP 9S RGE 20W  
Permanent Datum GROUND LEVEL Elevation 2113  
Log Measured From KELLY BUSHING 8' A.G.L  
Drilling Measured From KELLY BUSHING  
Other Services SONIC  
Elevation K.B. 2121  
D.F. 2119  
G.L. 2113

Date	10/25/23	
Run Number	ONE	
Depth Driller	3672	
Depth Logger	3674	
Bottom Logged Interval	3650	
Top Log Interval	3000	
Casing Driller	8.625 @ 221	
Casing Logger	221	
Bit Size	7.875	
Type Fluid in Hole	CHEMICAL MUD	CHLORIDES 2,700 PPM
Density / Viscosity	9.3/52	
pH / Fluid Loss	10.0/6.0	
Source of Sample	FLOWLINE	
Rm @ Meas. Temp	1.00 @ 67F	
Rmt @ Meas. Temp	.750 @ 67F	
Rmc @ Meas. Temp	1.20 @ 67F	
Source of Rmf / Rmc	MEASUREMENT	
Rm @ BHT	.593 @ 113F	
Time Circulation Stopped	2 HOURS	
Time Logger on Bottom	3:15 P.M.	
Maximum Recorded Temperature	113F	
Equipment Number	3802	
Location	HAYS, KANSAS	
Recorded By	COLE ROBBEN	
Witnessed By	MAX LOVELY	

<<< Fold Here >>>

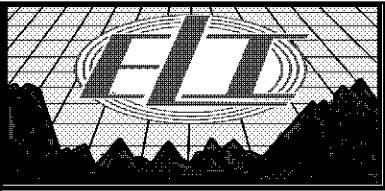
All interpretations are opinions based on inferences from electrical or other measurements and we cannot and do not guarantee the accuracy or correctness of any interpretation, and we shall not, except in the case of gross or willful negligence on our part, be liable or responsible for any loss, costs, damages, or expenses incurred or sustained by anyone resulting from any interpretation made by any of our officers, agents or employees. These interpretations are also subject to our general terms and conditions set out in our current Price Schedule.

**Comments**

THANK YOU FOR USING ELI WIRELINE SERVICES, HAYS, KS. ( 785 ) 628-6395

**DIRECTIONS:**

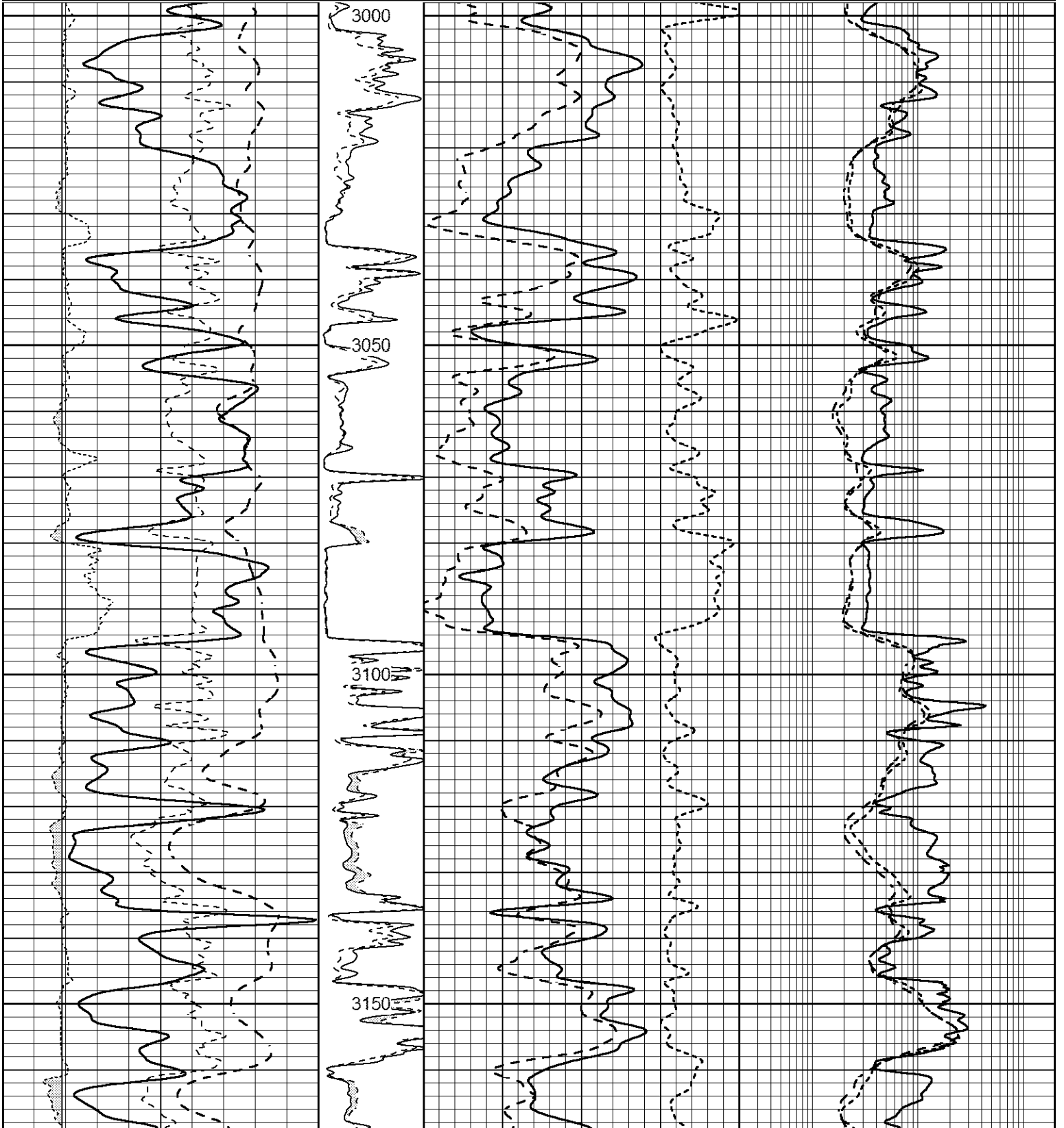
FROM ZURICH, KANSAS WEST TO ROAD 7, 4 MILES NORTH TO 'U' ROAD, CONTINUE 1/2 MILE NORTH TO SECOND SET OF TANK BATTERIES, WEST INTO

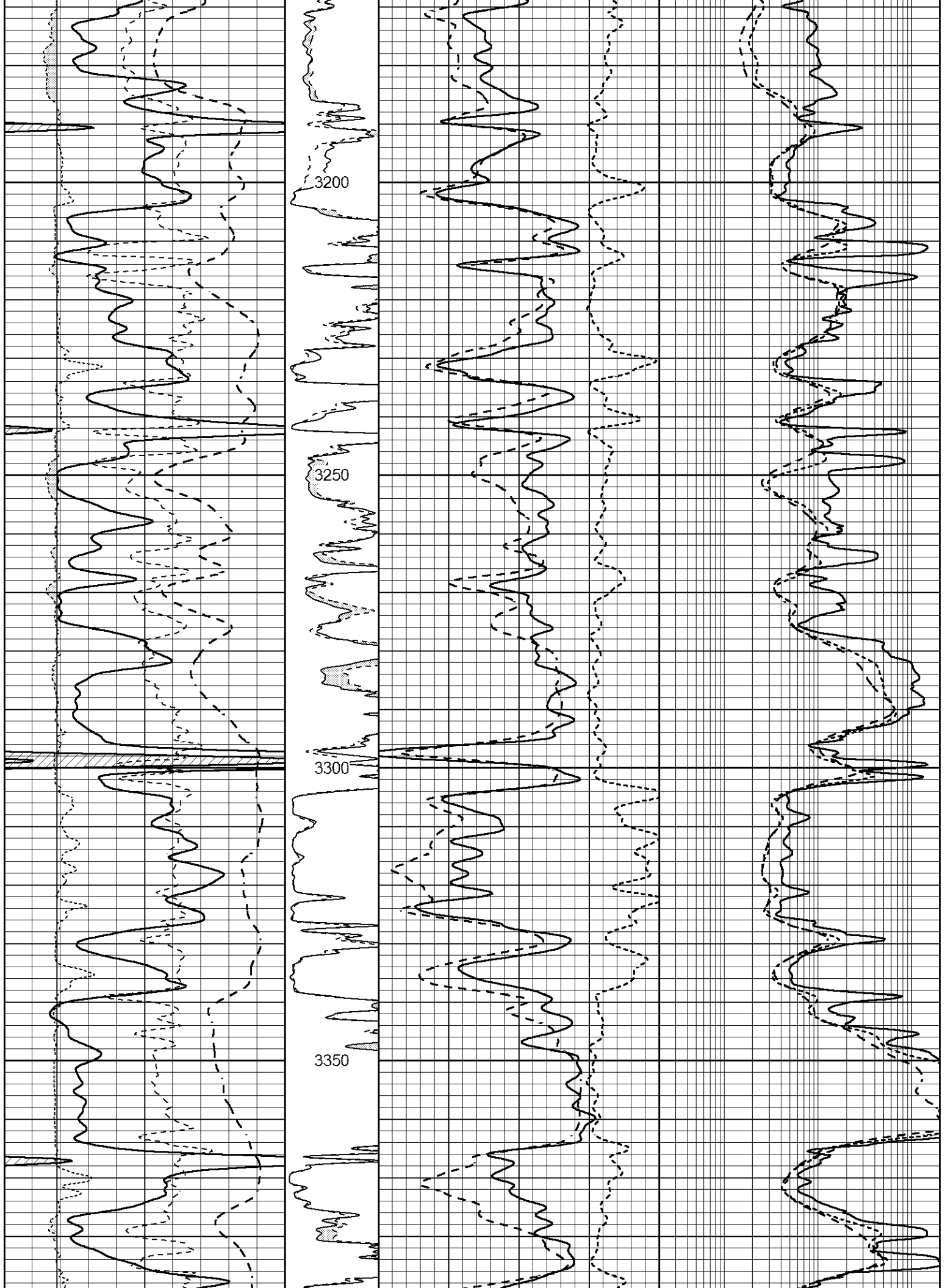


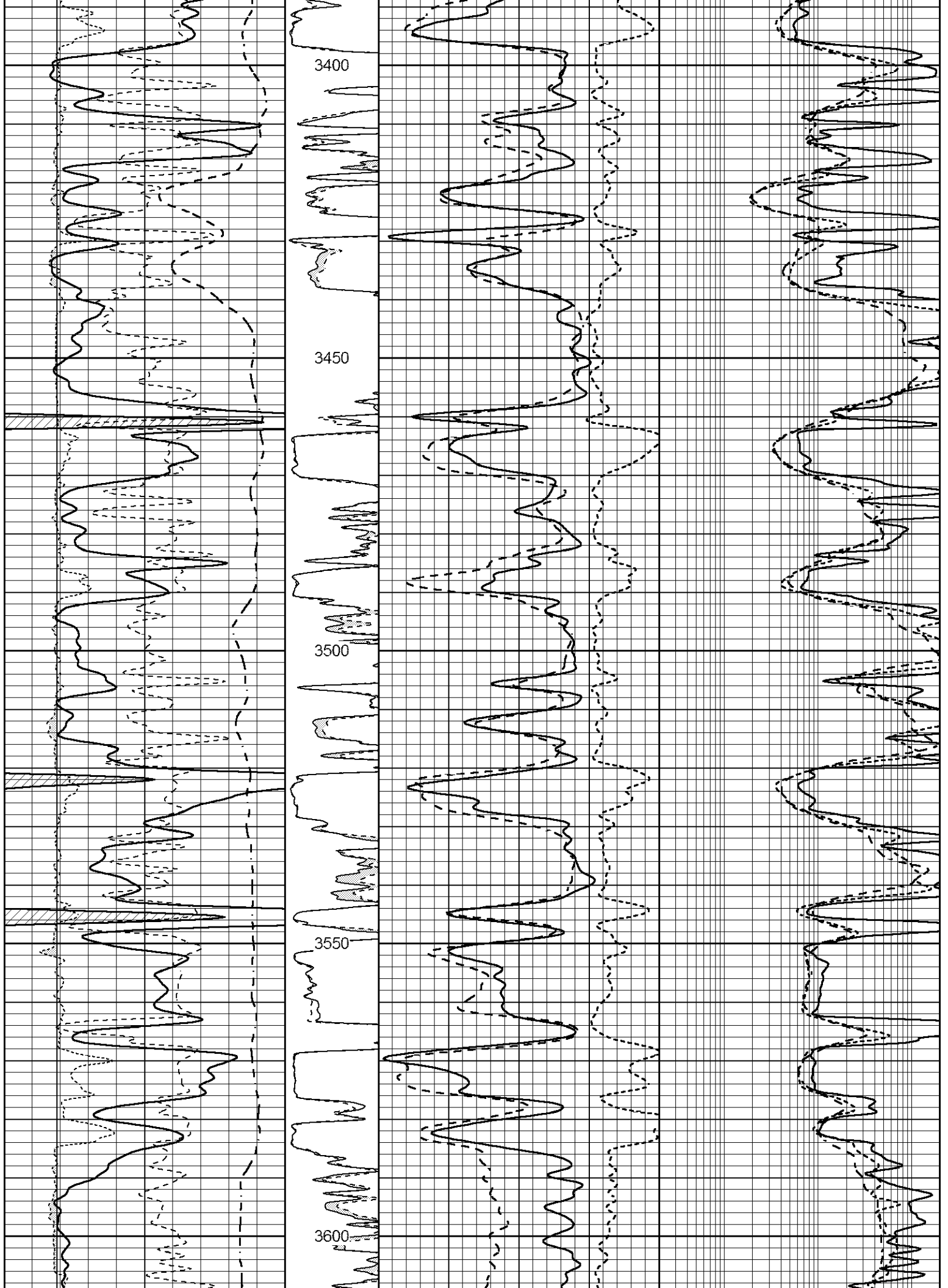
**MAIN SECTION**

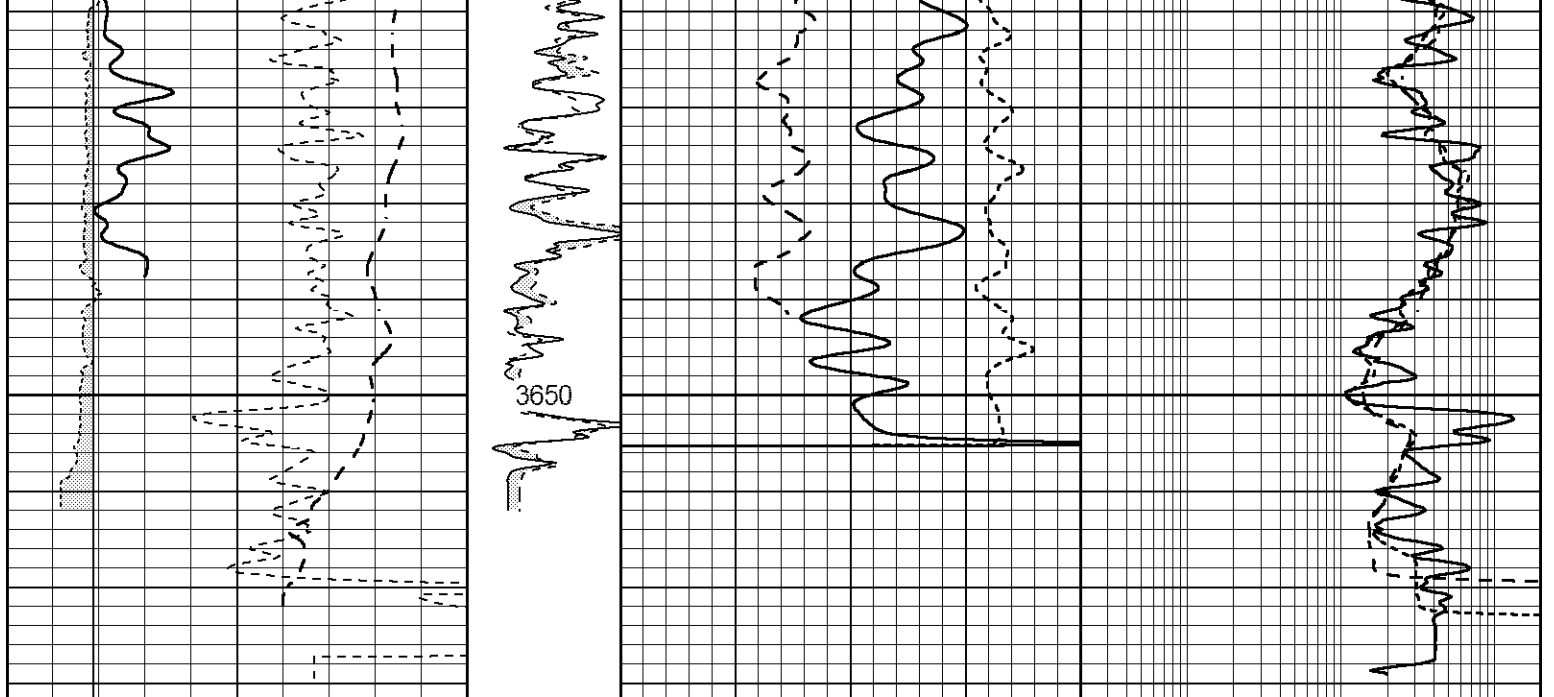
Database File 7786ddn.db  
 Dataset Pathname pass3C  
 Presentation Format \_ritchiecomp  
 Dataset Creation Wed Oct 25 17:28:33 2023  
 Charted by Depth in Feet scaled 1:240

0	Gamma Ray (GAPI)	150	MEL15	30	CN Porosity (pu)	-10	0.2	Deep Resistivity (Ohm-m)	200
-100	SP (mV)	100	(Ohm-m)	30	Density Porosity (pu)	-10	0.2	Medium Resistivity (Ohm-m)	200
-200	RxoRt	100	0	40	RHOC		0.2	Shallow Resistivity (Ohm-m)	200
6	MELCAL (in)	16	MEL20		-0.25 (g/cc) 0.25				
			(Ohm-m)						
			0	40					









0	Gamma Ray (GAPI)	150	MEL15	30	CN Porosity (pu)	-10	0.2	Deep Resistivity (Ohm-m)	200	
-100	SP (mV)	100	(Ohm-m)	30	Density Porosity (pu)	-10	0.2	Medium Resistivity (Ohm-m)	200	
-200	RxoRt	100	0	40				0.2	Shallow Resistivity (Ohm-m)	200
6	MELCAL (in)	16	MEL20			RHOC				
			(Ohm-m)			-0.25 (g/cc)	0.25			
			0	40						