



MIDWEST SURVEYS
 LOGGING - PERFORATING - CONSULTING SERVICES
 P.O. Box 68, Osawatomie, KS 66064
 913 / 755 - 2128

GAMMA RAY / NEUTRON / CCL

File No.

Company: **Colt Energy, Inc.**
 Well: **Johnson No. D-35**

Field: **Iola**

County: **Allen**

State: **Kansas**

Location: **1210' FSL & 740' FWL**
NW/NE-SW/SW

Sec. 11
 Twp. 24S
 Rge. 18E

Perforate
 Permament Datum: **GL**
 Log Measured From: **GL**
 Drilling Measured From: **GL**

Elevation: **969'**
 KB NA
 DF NA
 GL 969

Date: **01-04-2024**

Run Number: **One**

Depth Driller: **978.0**

Depth Logger: **960.0**

Bottom Logged Interval: **20.0**

Top Log Interval: **20.0**

Fluid Level: **Full**

Type Fluid: **Water**

Density / Viscosity: **NA**

Salinity - PPM Cl: **NA**

Max Recorded Temp: **NA**

Equipment No.: **104**

Location: **Osawatomie**

Recorded By: **Steve Windisch**

Witnessed By: **Wes Woods**

BORE-HOLE RECORD		CASING RECORD					
Run No.	BIT	FROM	TO	SIZE	WGT.	FROM	TO
One	12.25"	0.0	20.0	8.625"	28.0	0.0	20.0
Two	6.75"	20.0	978.0	4.50"	10.5	0.0	971.7
						Set	At
							867.7

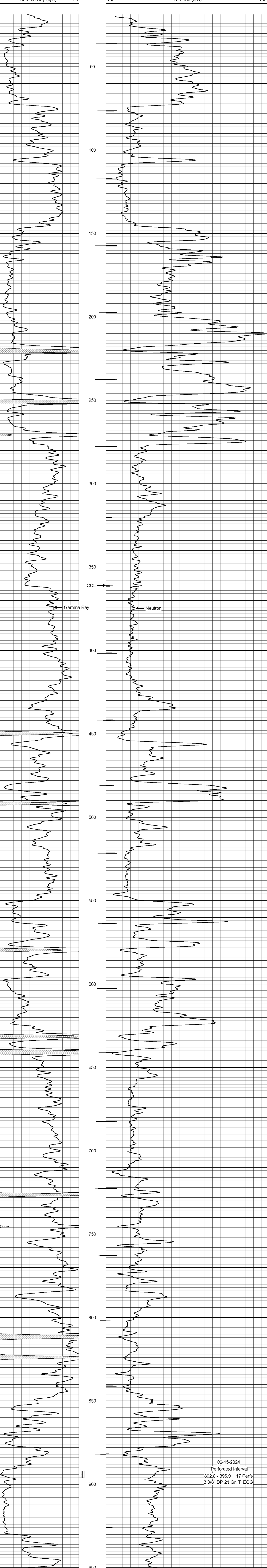
<<< Fold Here >>>

All interpretations are opinions based on inferences from electrical or other measurements and we cannot and do not guarantee the accuracy or correctness of any interpretation, and we shall not, except in the case of gross or willful negligence on our part, be liable or responsible for any loss, costs, damages, or expenses incurred or sustained by anyone resulting from any interpretation made by any of our officers, agents or employees. These interpretations are also subject to our general terms and conditions set out in our current Price Schedule.

Comments

Drilling Contractor :
 Colt Energy, Inc.

Database File: johnson 35d.db
 Dataset Pathname: pass1
 Presentation Format: gr-n-ccl
 Dataset Creation: Thu Jan 04 10:14:48 2024 by Log SCH 111116
 Charted by: Depth in Feet scaled 1:240



02-15-2024
 Perforated Interval
 892.0 - 896.0 17 Perfs
 3 3/8" DP 21 Gr. T. ECG