



DUAL INDUCTION LOG

Company VINCENT OIL CORPORATION
 Well C&D HERRMANN #1-5
 Field WILDFIRE
 County FORD State KANSAS

Location: API #: 15-057-21098-0000
 2300' FNL & 444' FWL
 NE - SW - SW - NW
 SEC 5 TWP 29S RGE 23W
 Permanent Datum GROUND LEVEL Elevation 2482
 Log Measured From KELLY BUSHING 12' A.G.L.
 Drilling Measured From KELLY BUSHING
 Other Services
 CDL/CNL/PE
 MEL/SONIC
 Elevation
 K.B. 2494
 D.F. 2492
 G.L. 2482

Date	11/5/23
Run Number	ONE
Depth Driller	5274
Depth Logger	5276
Bottom Logged Interval	5274
Top Log Interval	00
Casing Driller	8.625@583
Casing Logger	578
Bit Size	7.785
Type Fluid in Hole	CHEMICAL MUD
Density / Viscosity	9.3/53
pH / Fluid Loss	11.0/8.4
Source of Sample	FLOWLINE
Rm @ Meas. Temp	.700@78F
Rmf @ Meas. Temp	.525@78F
Rmc @ Meas. Temp	.840@78F
Source of Rmf / Rmc	MEASUREMENT
Rm @ BHT	.430@127F
Time Circulation Stopped	3 HOURS
Time Logger on Bottom	4:00 P.M.
Maximum Recorded Temperature	127F
Equipment Number	922339
Location	HAYS, KANSAS
Recorded By	JEFF LUEBBERS
Witnessed By	TOM DUDGEON
	JEREMY PASEK

<<< Fold Here >>>

All interpretations are opinions based on inferences from electrical or other measurements and we cannot and do not guarantee the accuracy or correctness of any interpretation, and we shall not, except in the case of gross or willful negligence on our part, be liable or responsible for any loss, costs, damages, or expenses incurred or sustained by anyone resulting from any interpretation made by any of our officers, agents or employees. These interpretations are also subject to our general terms and conditions set out in our current Price Schedule.

15-057-21098-0000 Comments

THANK YOU FOR USING ELI WIRELINE HAYS. KANSAS (785) 628-6395
 DIRECTIONS
 KINGSDOWN, KS. 2N ON "RD 125" TO WILBURN RD, 5W. TO "RD. 120", 1S., 1W. TO MAILBOX, N.
 INTO PAST FARMSTEAD

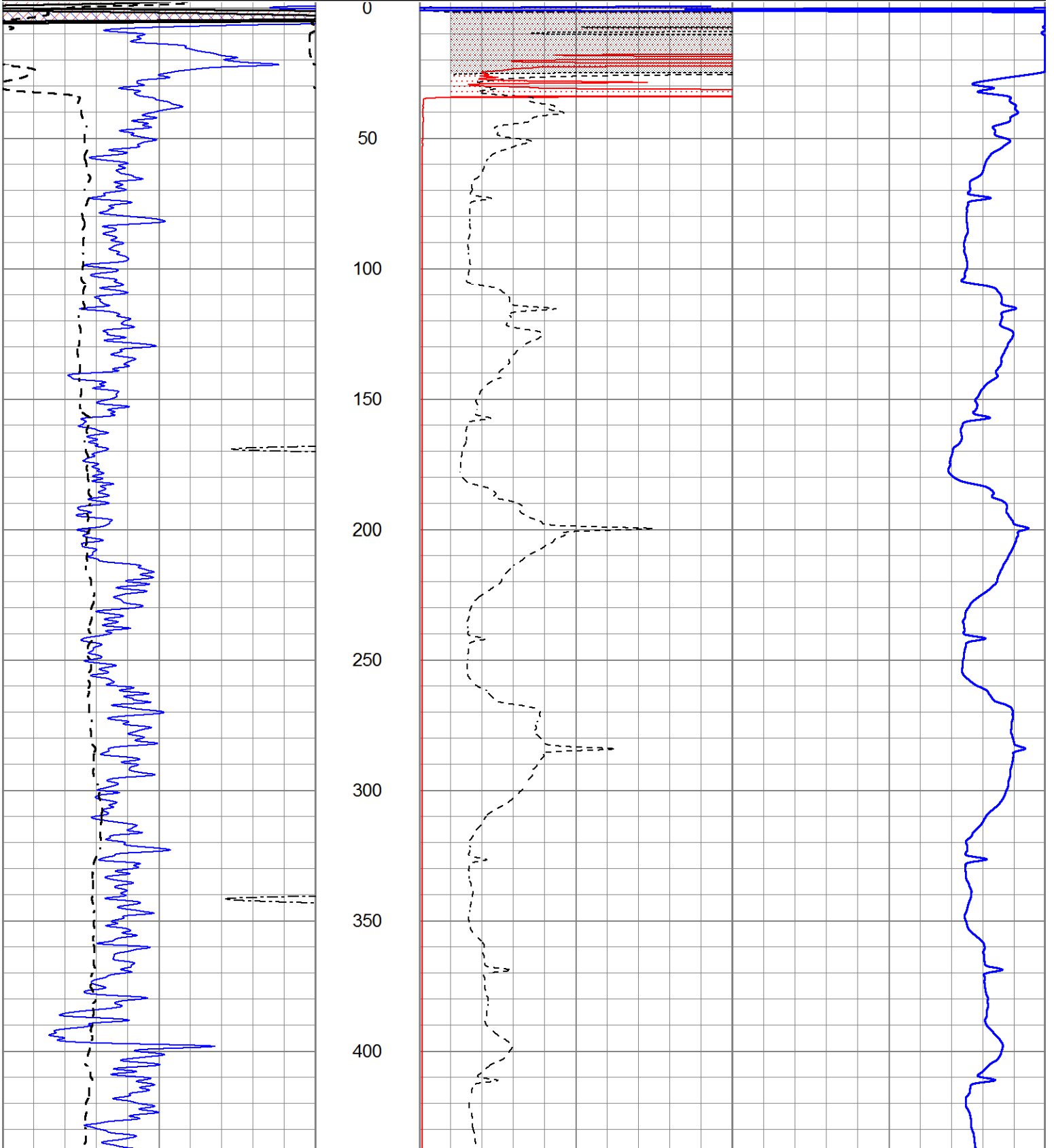


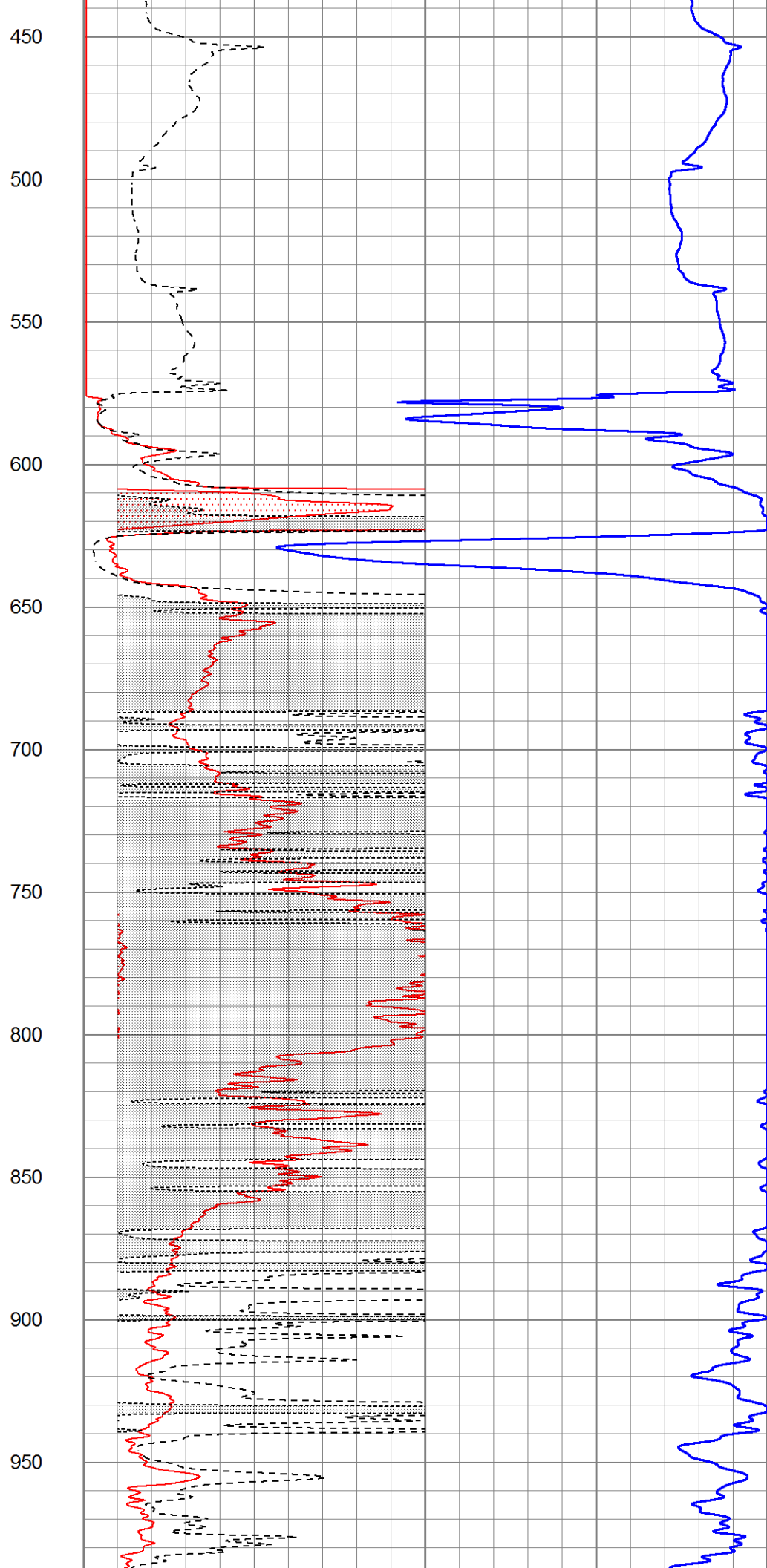
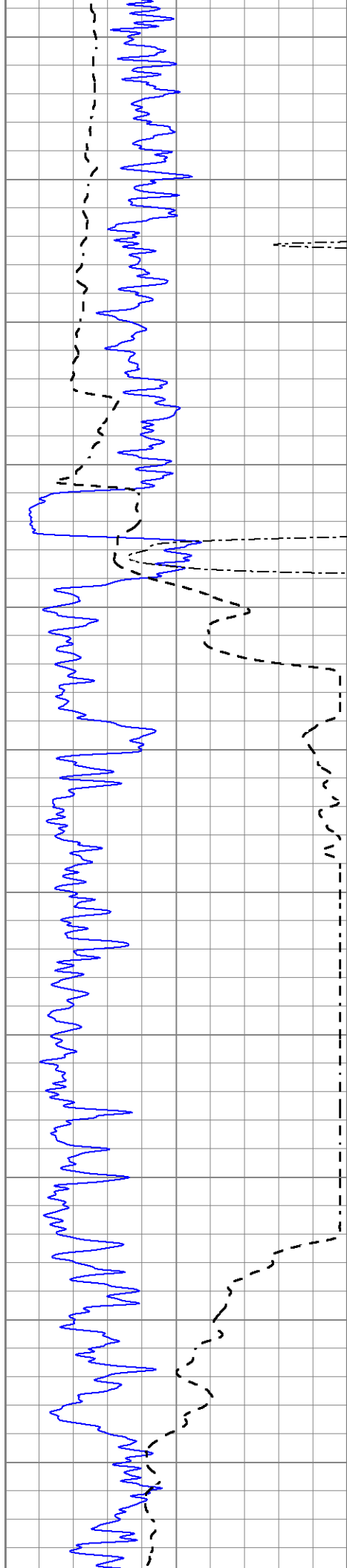
MAIN SECTION

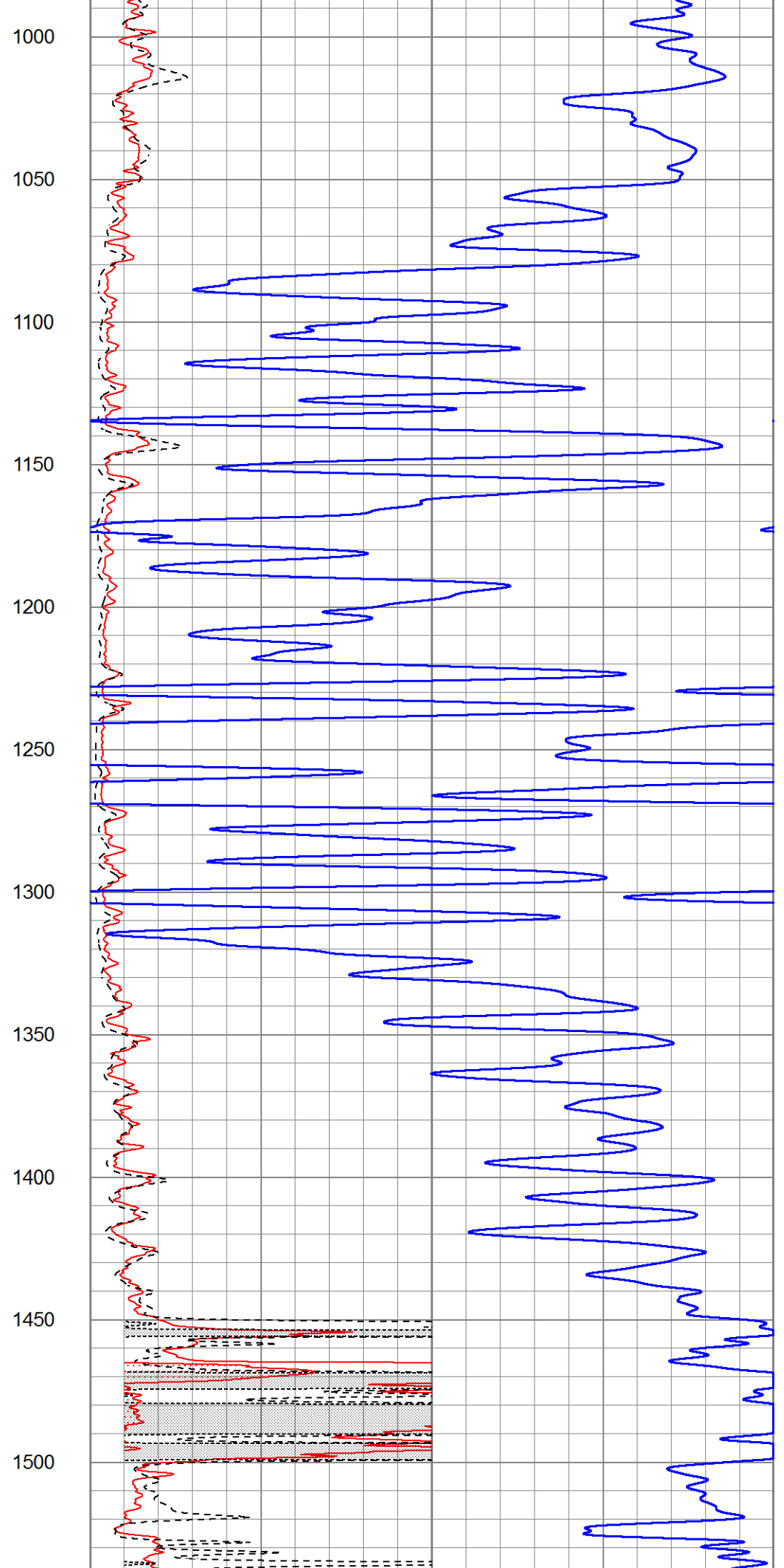
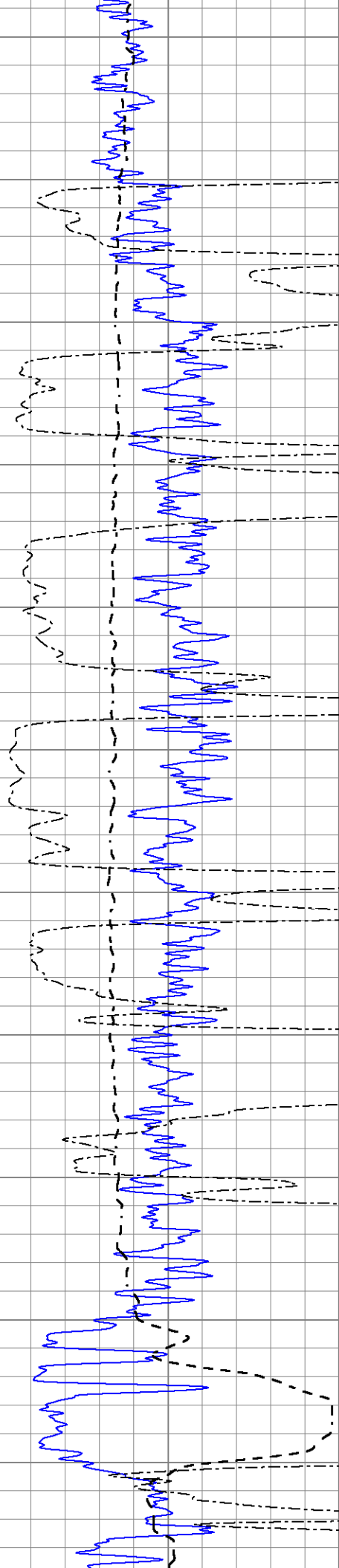
Database File 8334pe.db
 Dataset Pathname pass4.1M
 Presentation Format _dil2
 Dataset Creation Sun Nov 05 18:20:48 2023
 Charted by Depth in Feet scaled 1:600

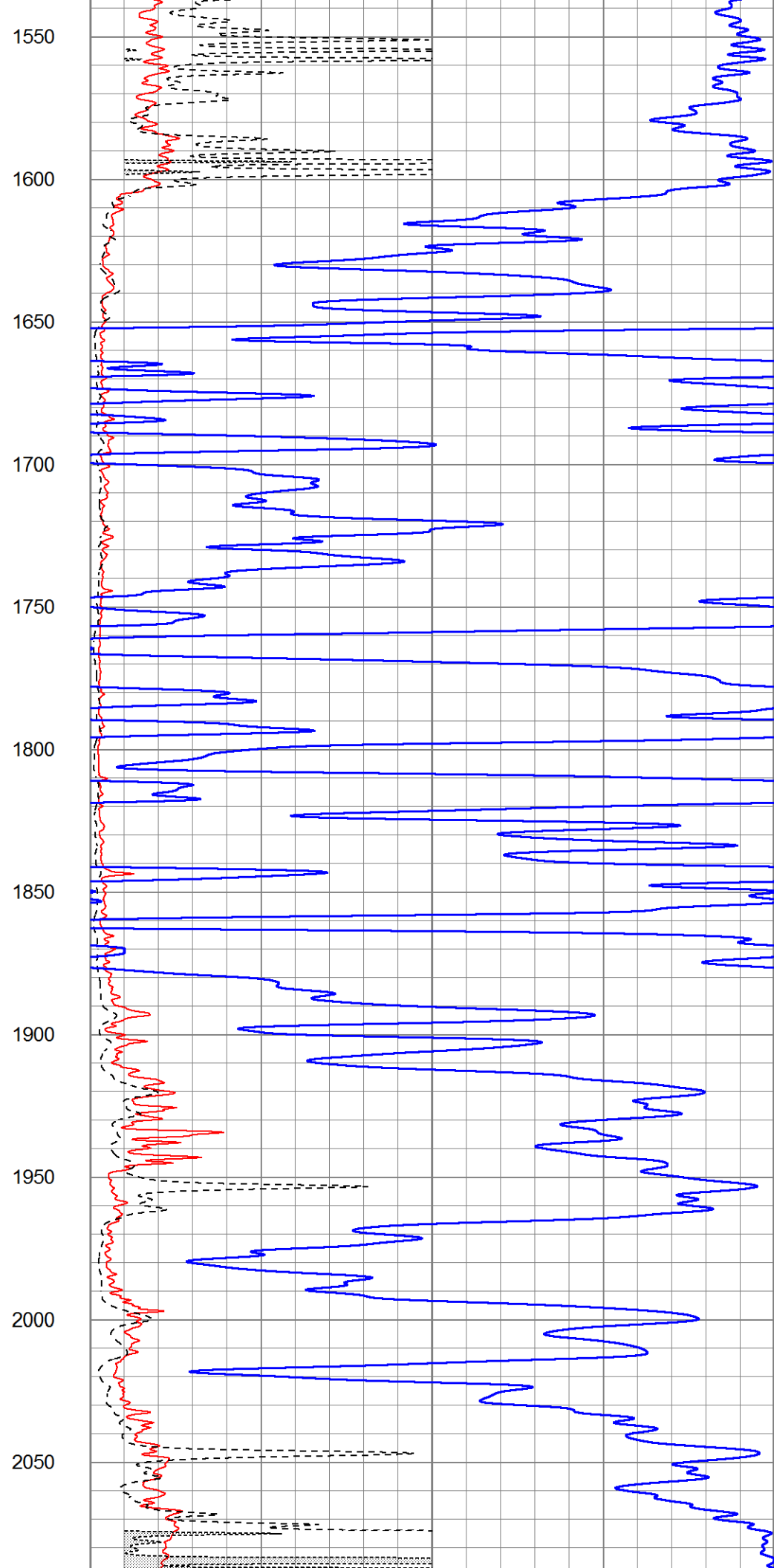
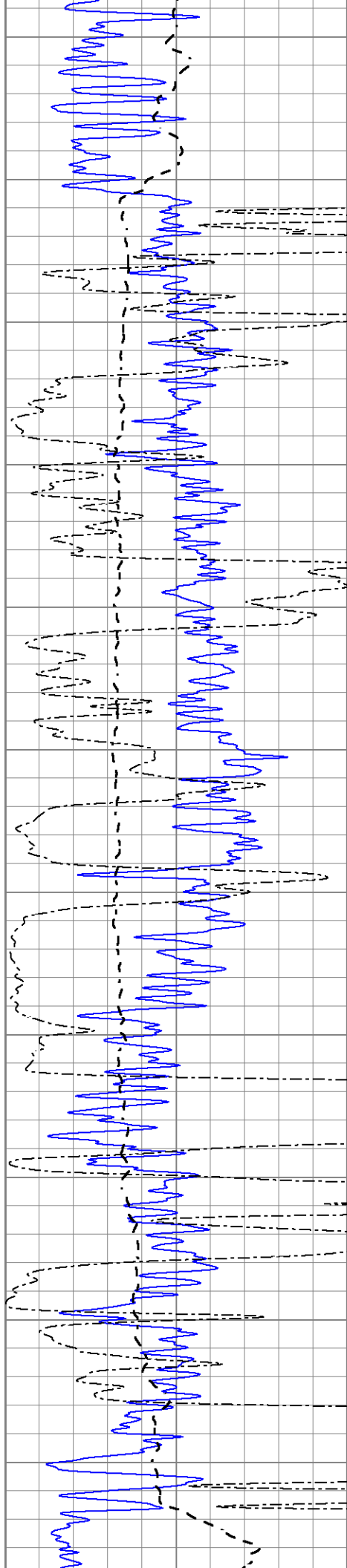
0	Gamma Ray (GAPI)	150
-100	SP (mV)	100
0	RWA (Ohm-m)	1

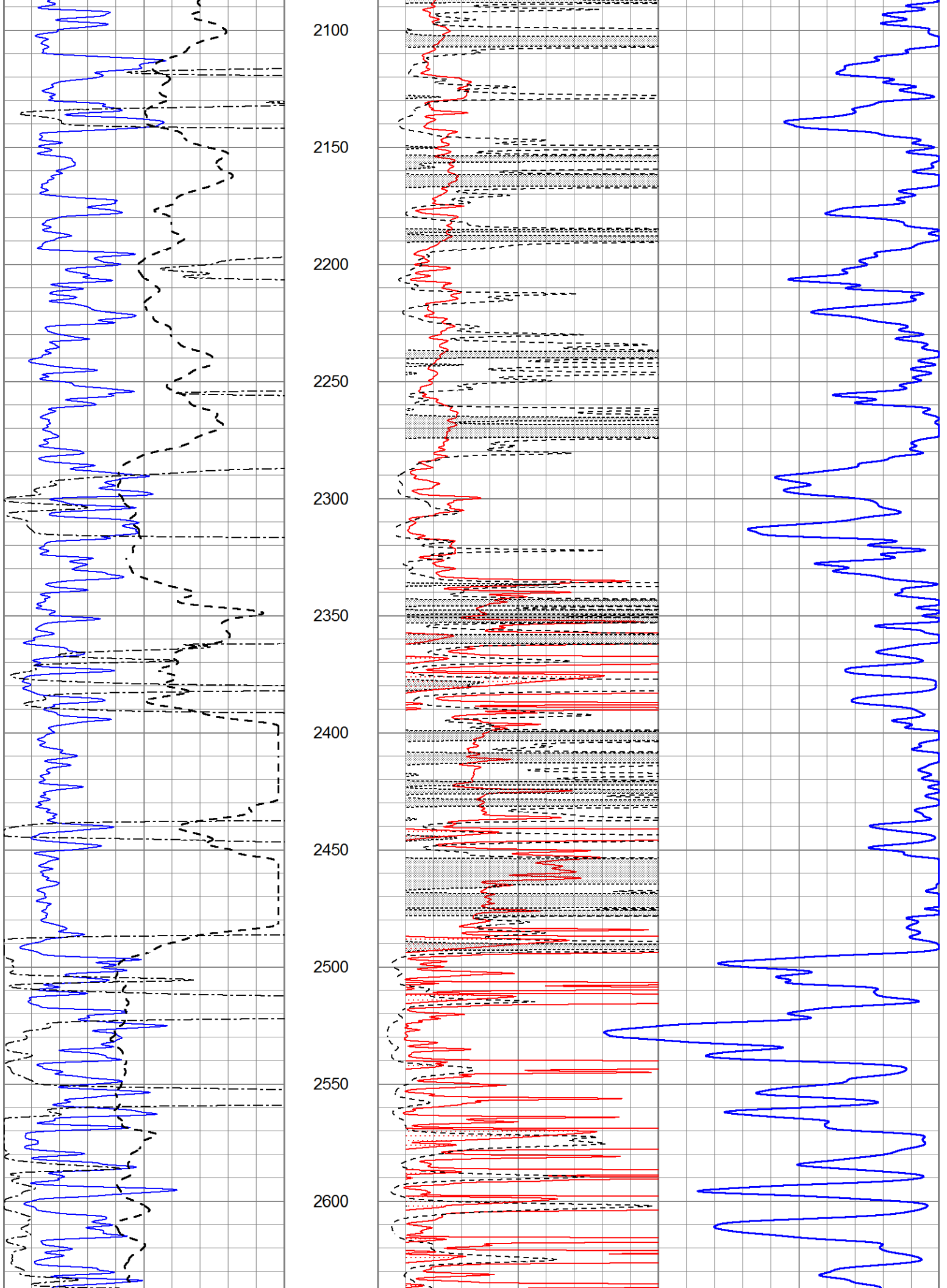
1000	CILD (mmho/m)	0
0	RLL3 (Ohm-m)	50
0	RILD (Ohm-m)	50
50	RILD X10 (Ohm-m)	500
50	RLL3 X10 (Ohm-m)	500

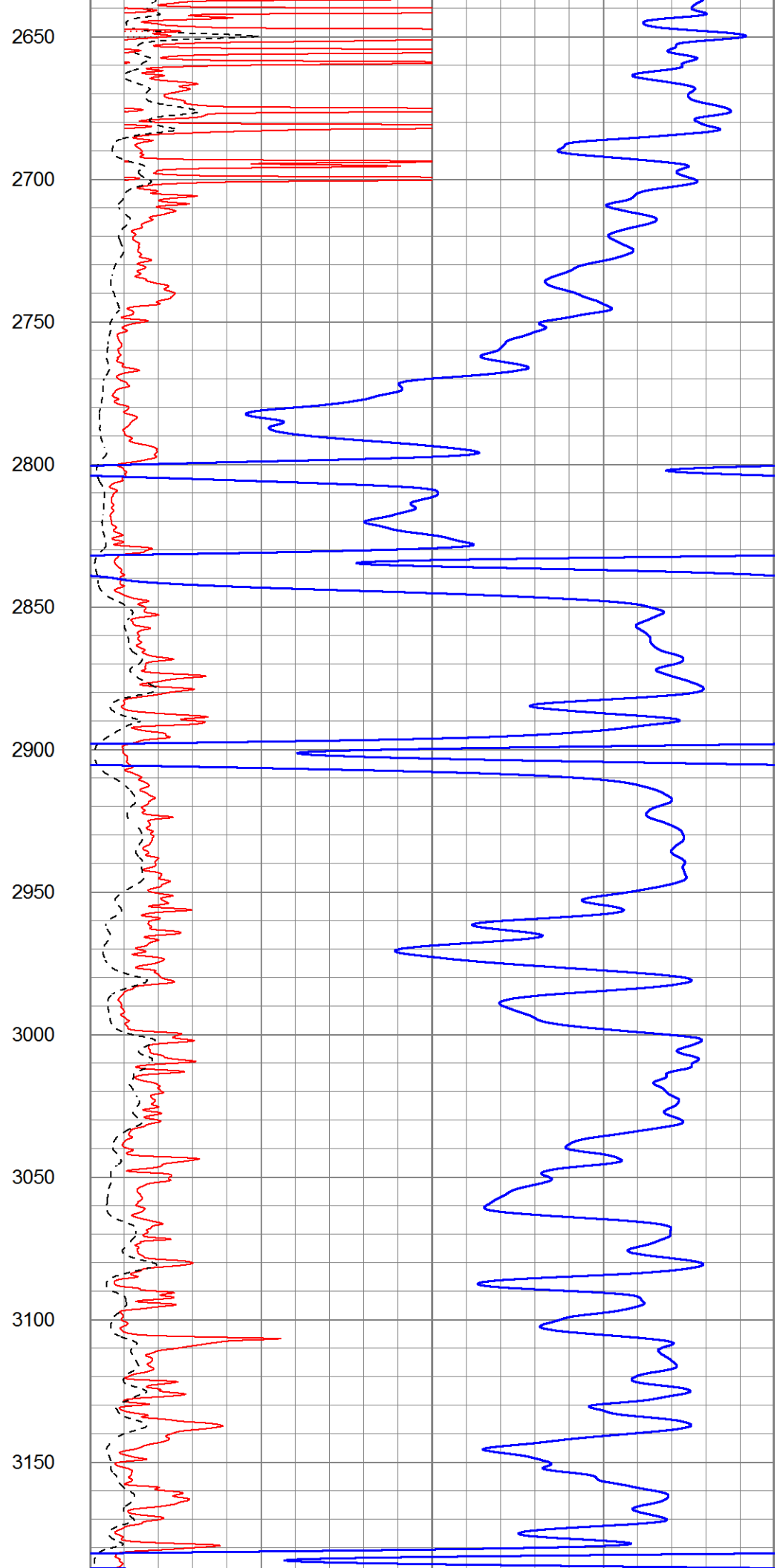
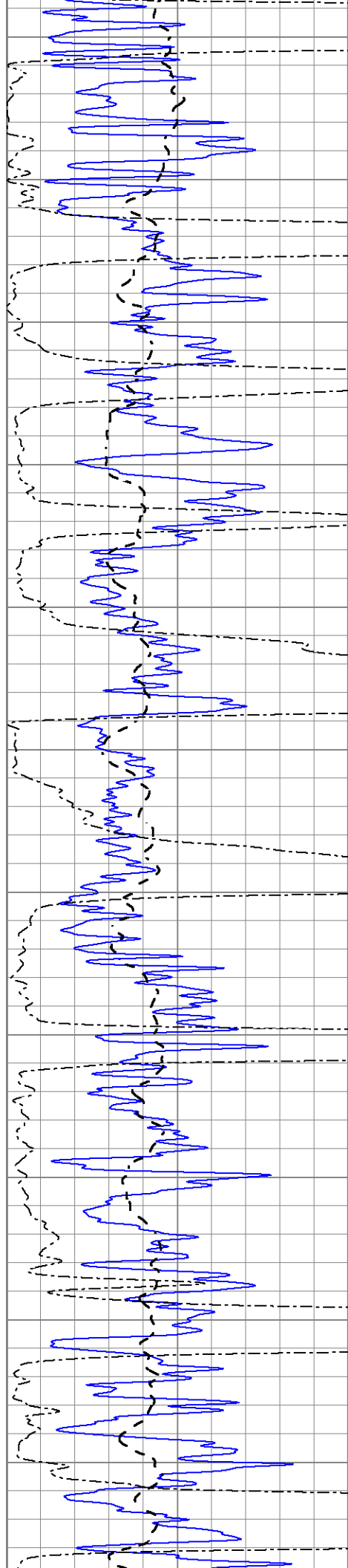


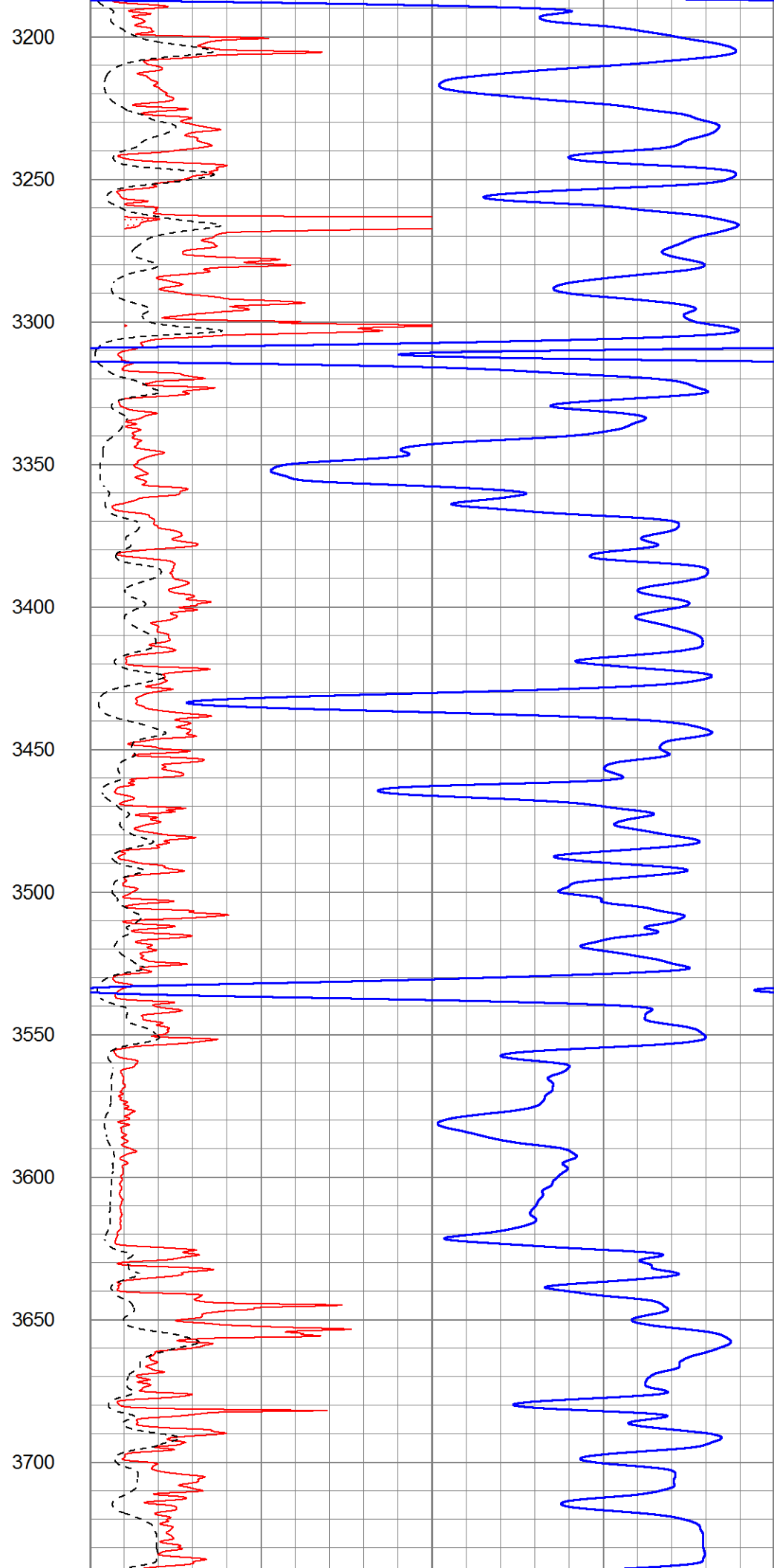
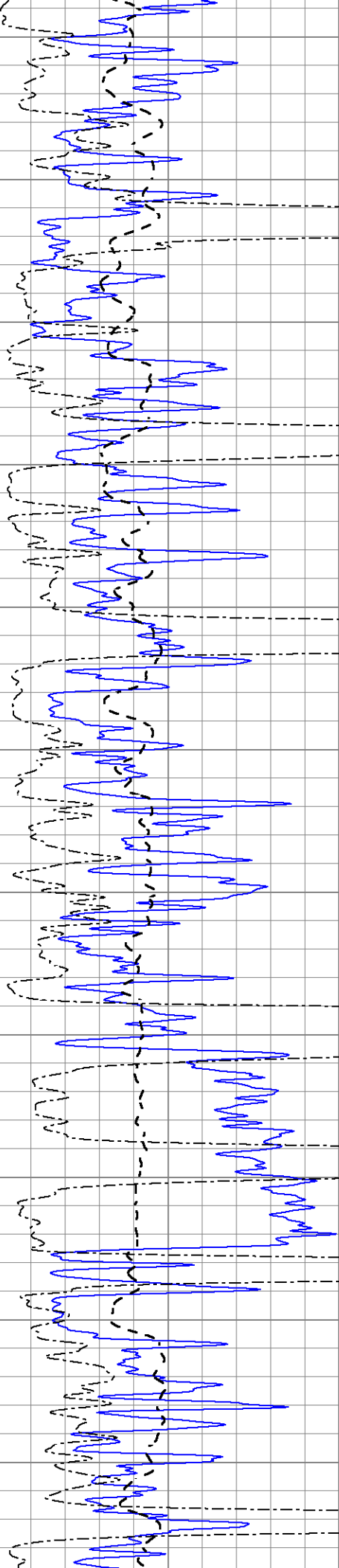


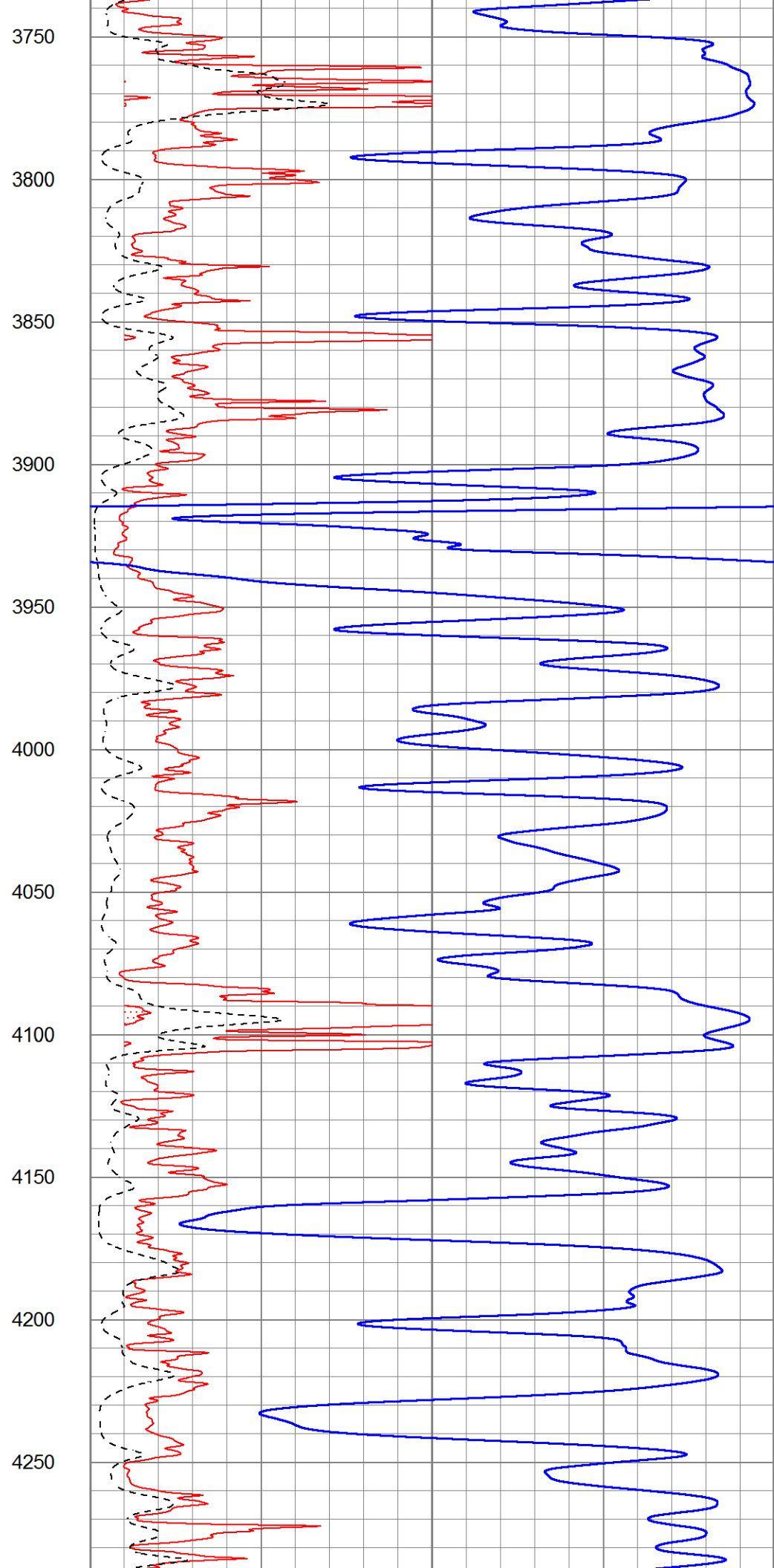
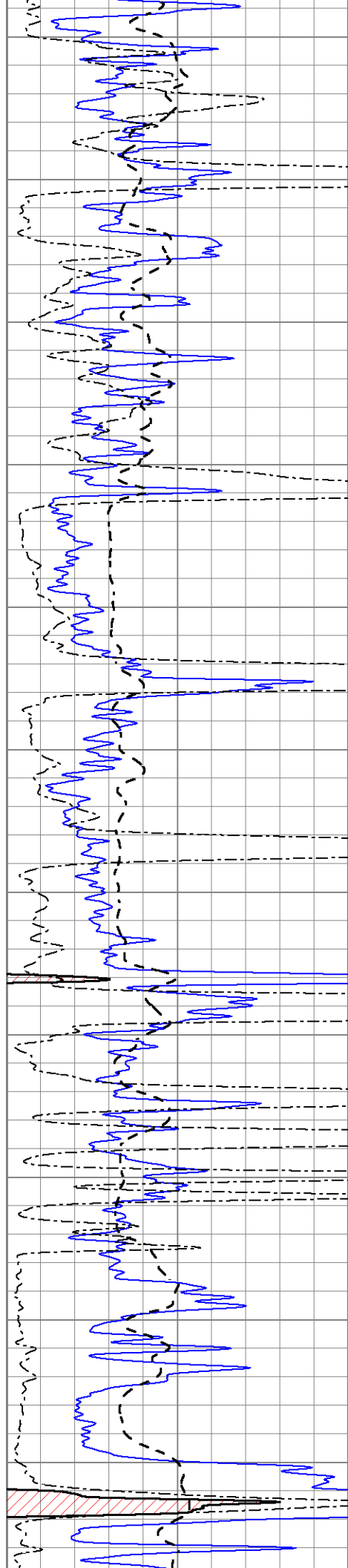


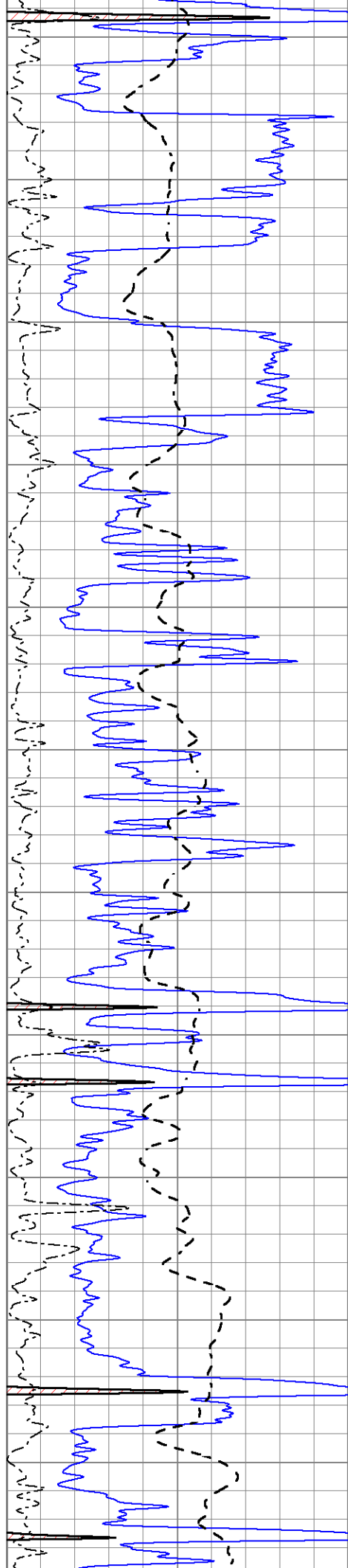












4300

4350

4400

4450

4500

4550

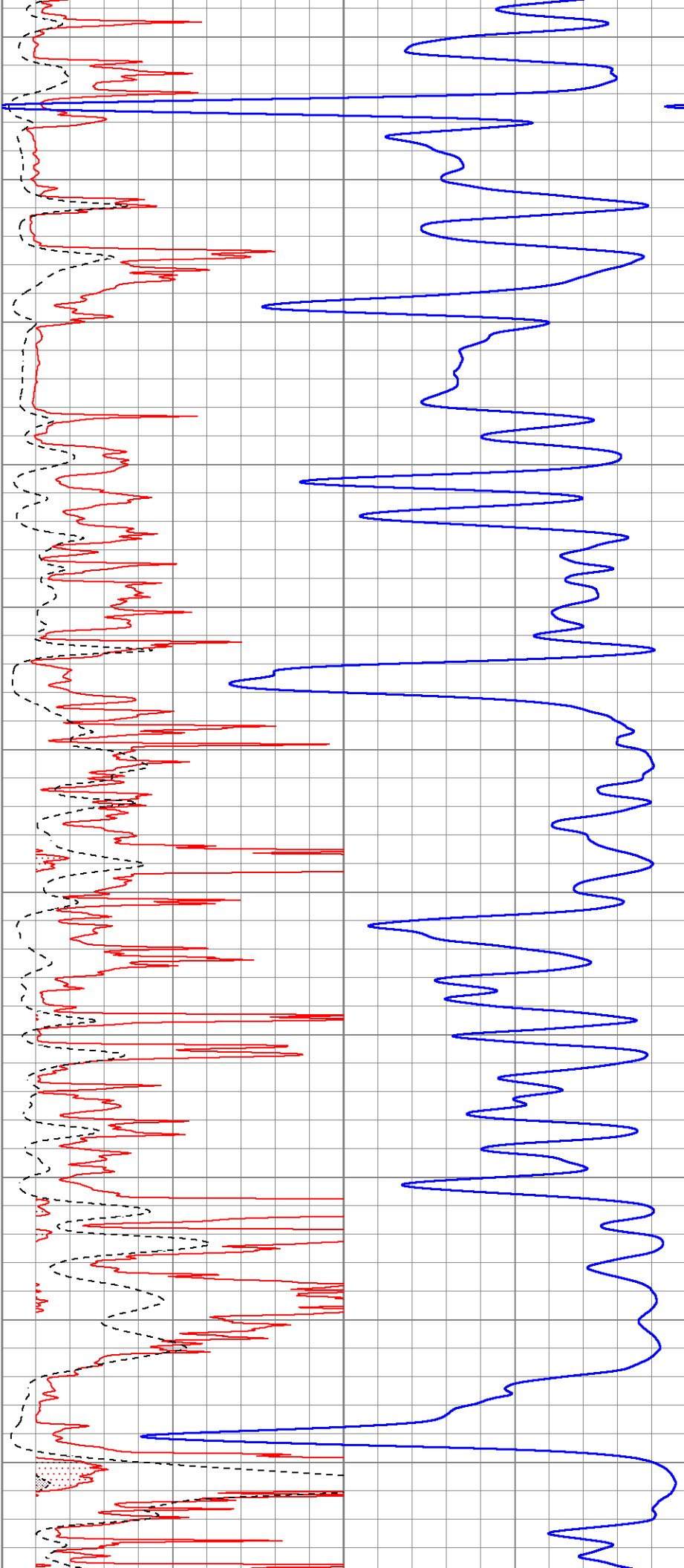
4600

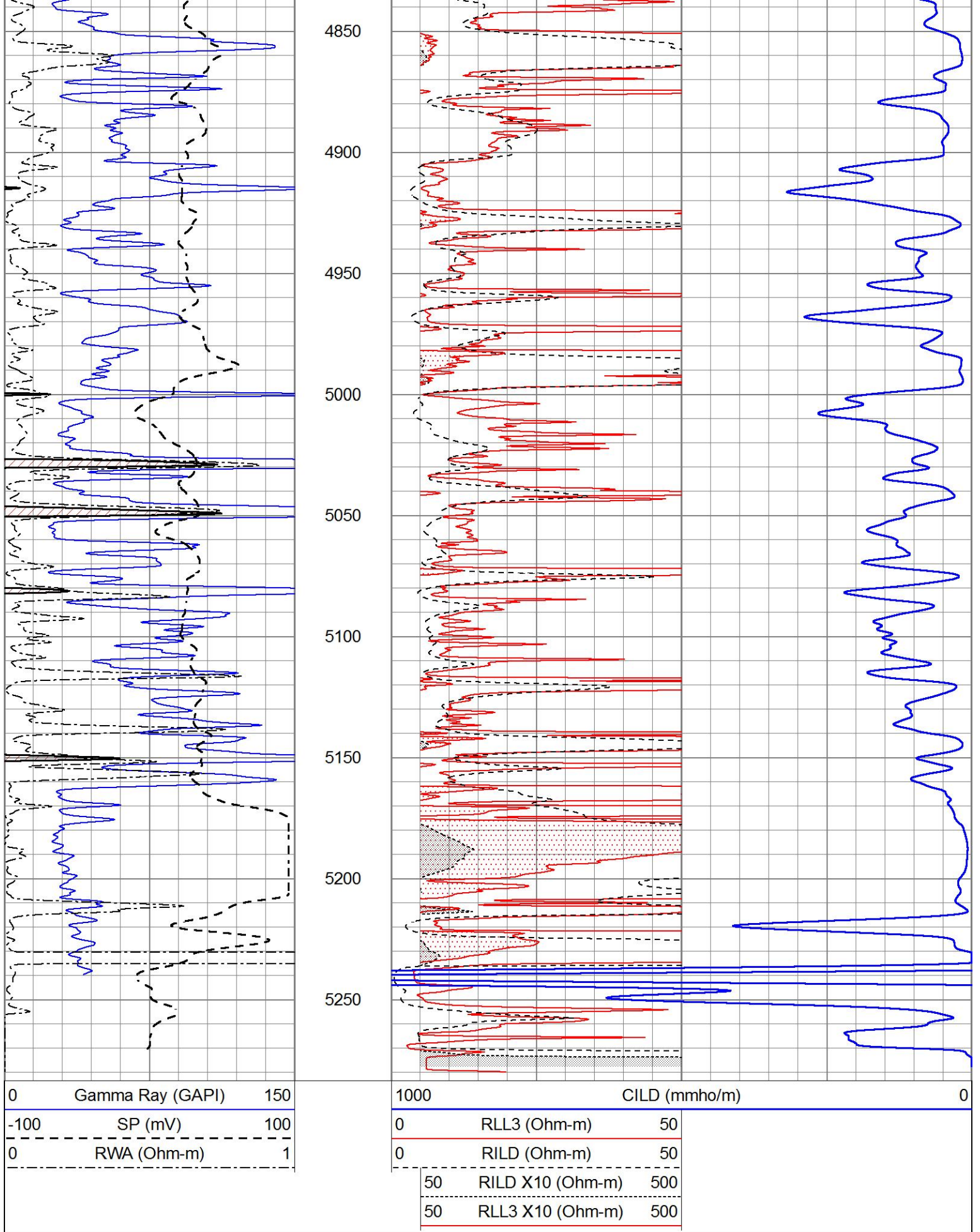
4650

4700

4750

4800





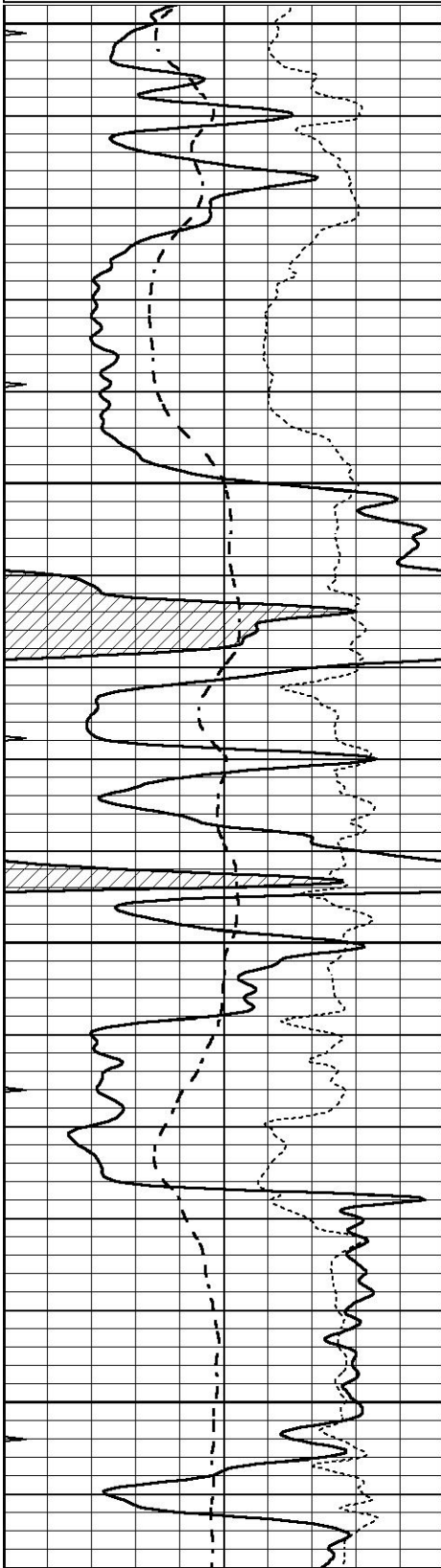
MAIN SECTION

MAIN SECTION

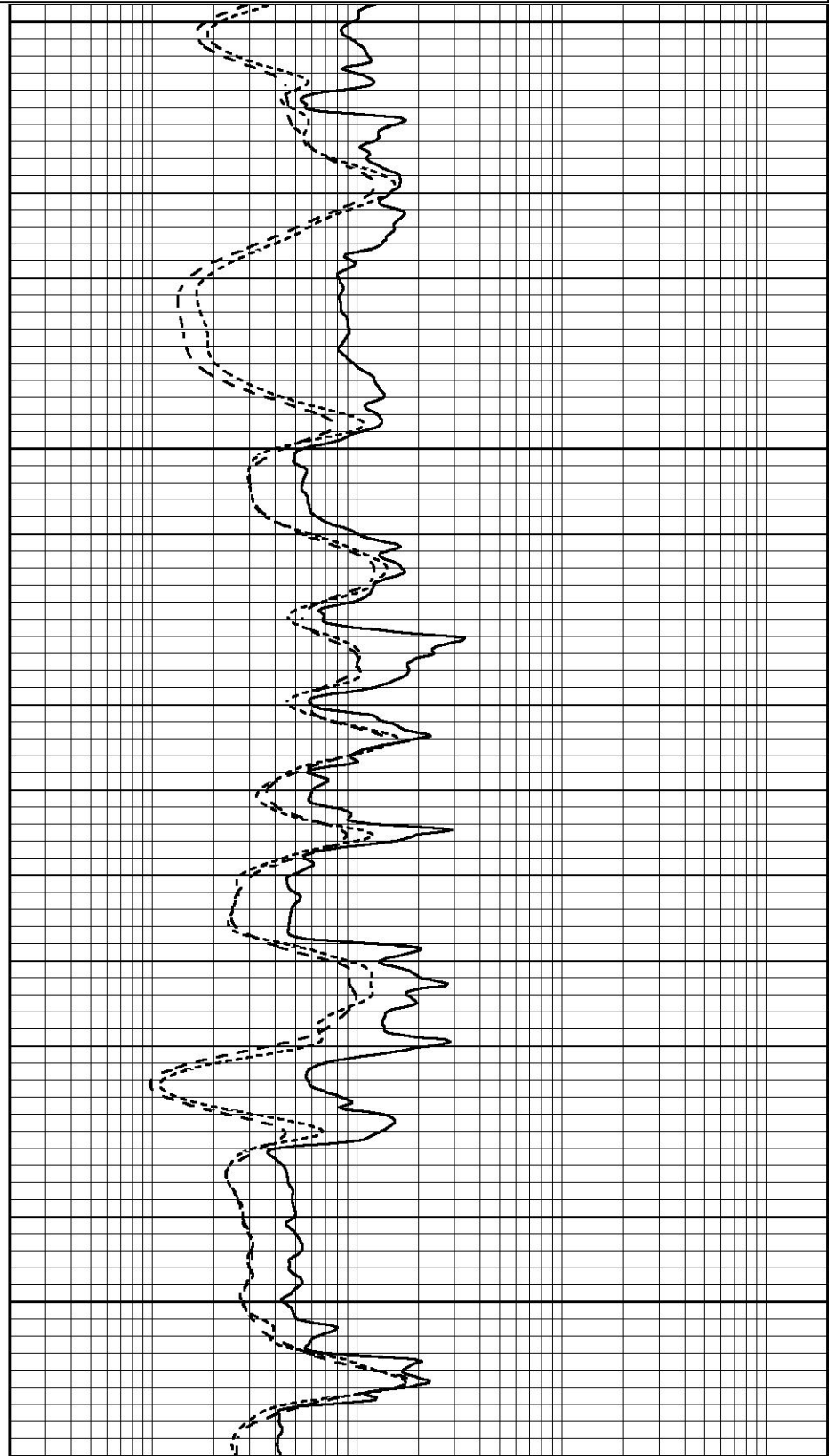
Database File 8334pe.db
Dataset Pathname pass4.1M
Presentation Format _dil
Dataset Creation Sun Nov 05 18:20:48 2023
Charted by Depth in Feet scaled 1:240

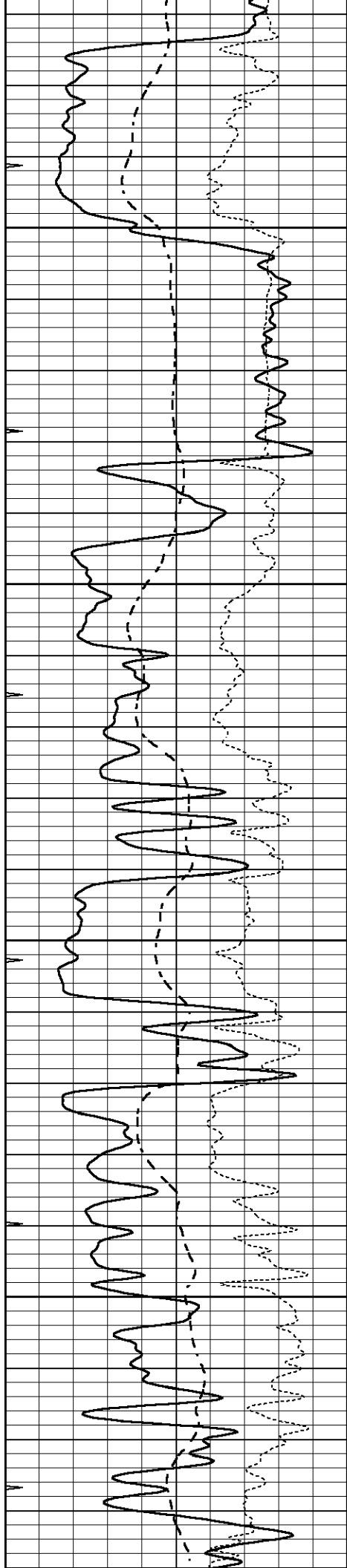
0	GAMMA RAY (GAPI)	150
-100	SP (mV)	100
-250	Rxo/Rt	50
0	MINMK	20

0.2	SHALLOW GUARD (Ohm-m)	2000
0.2	DEEP INDUCTION (Ohm-m)	2000
0.2	MEDIUM INDUCTION (Ohm-m)	2000



4200
4250
4300
4350



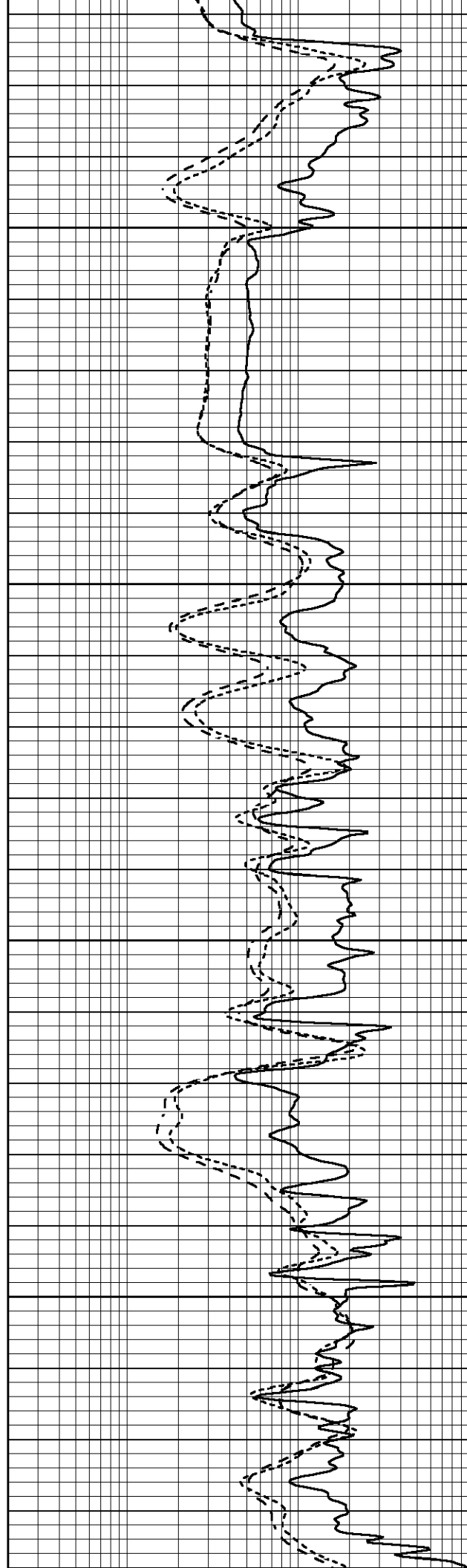


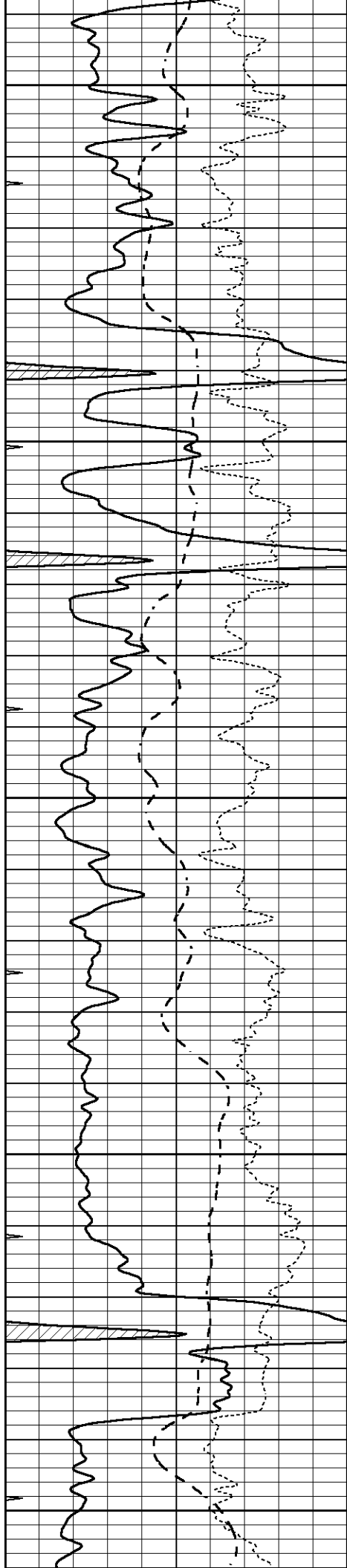
4400

4450

4500

4550





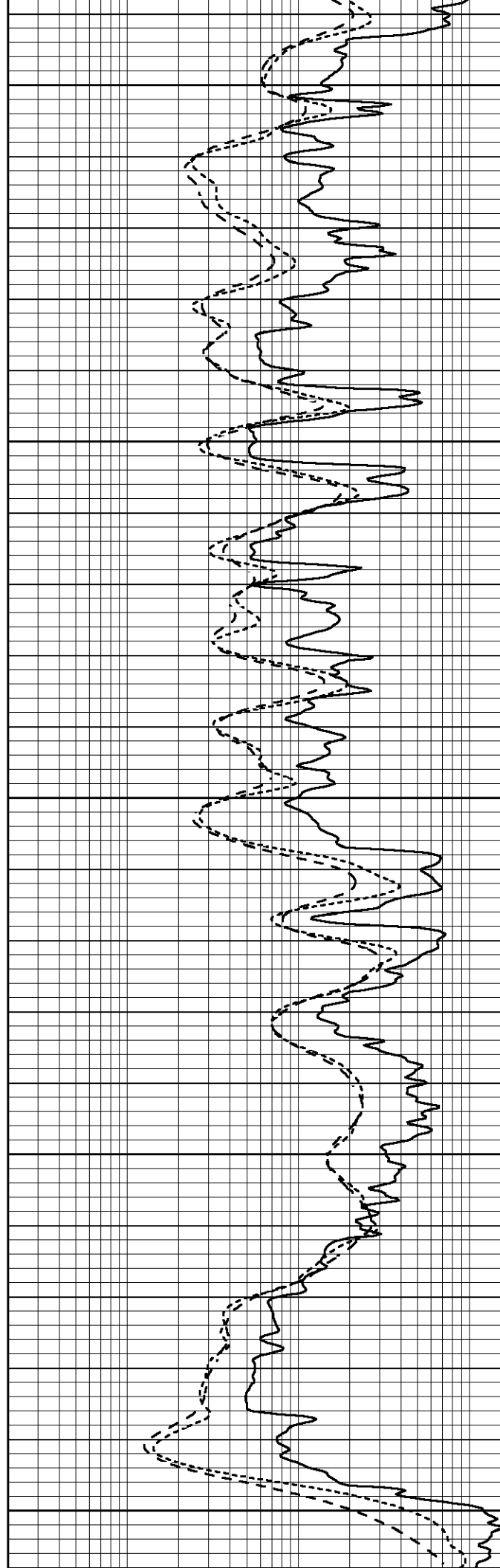
4600

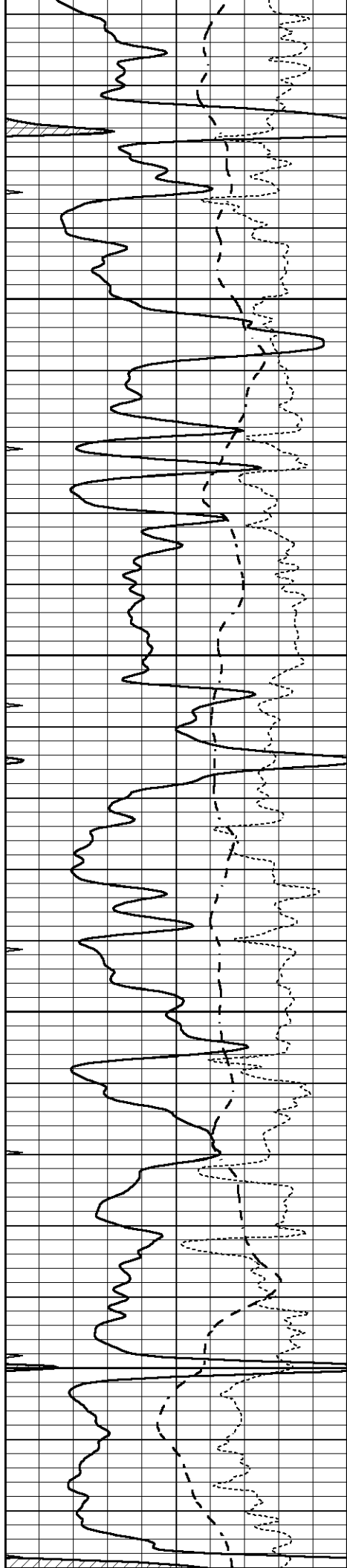
4650

4700

4750

4800



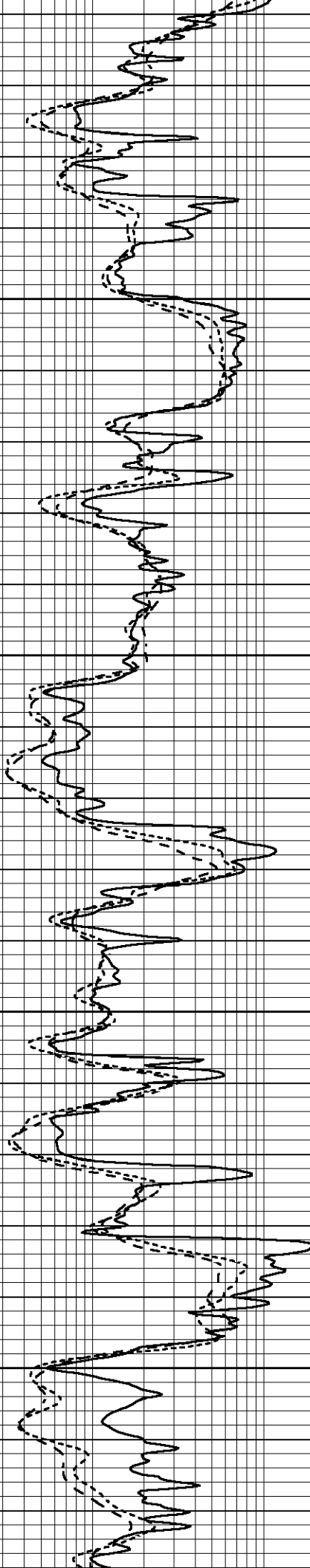


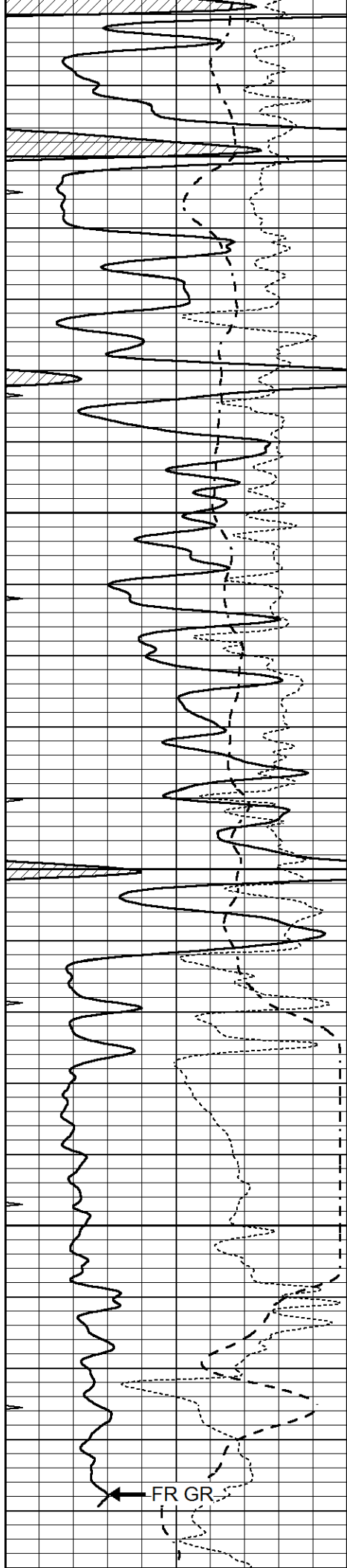
4850

4900

4950

5000





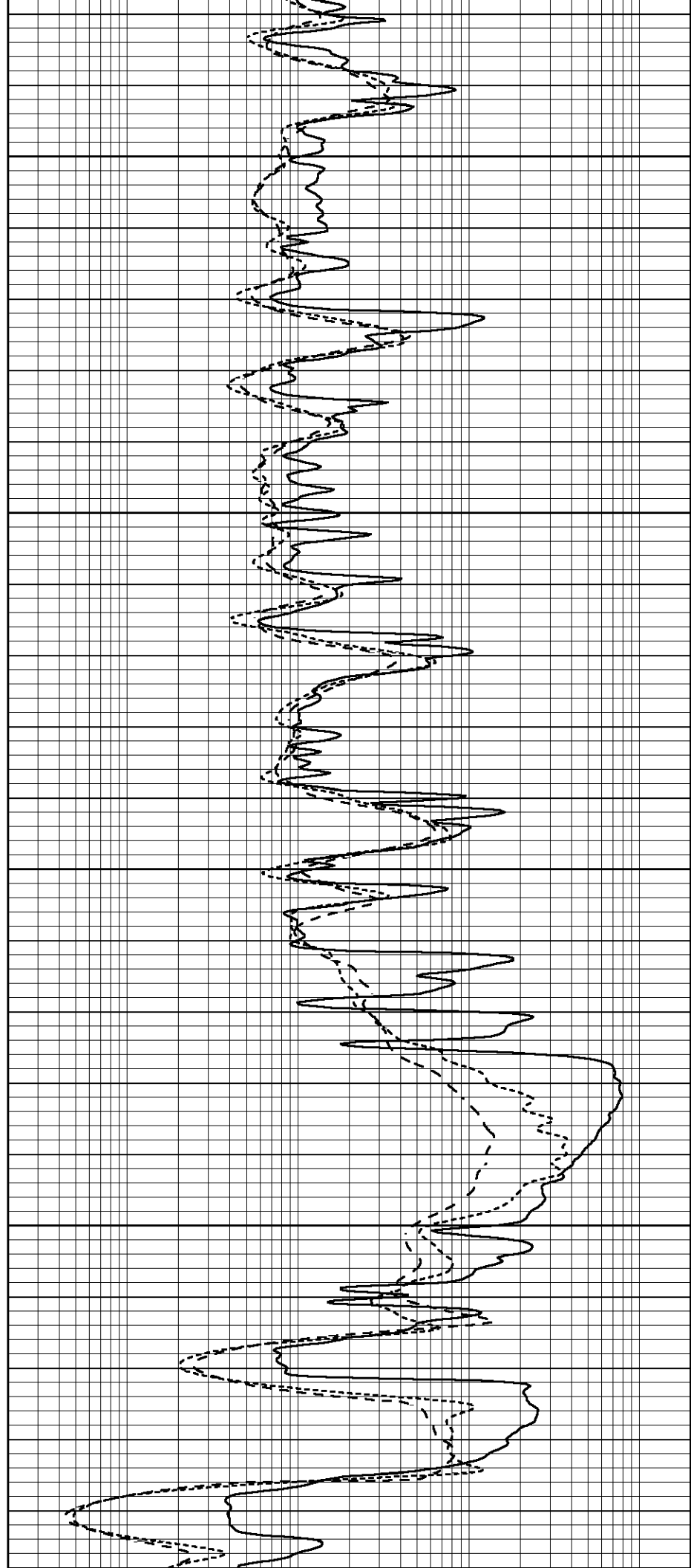
5050

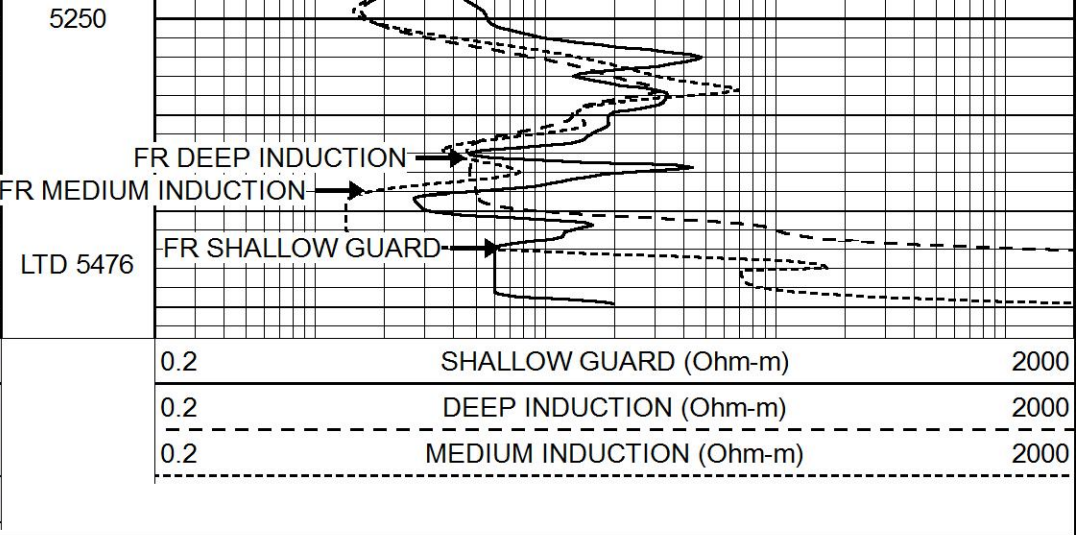
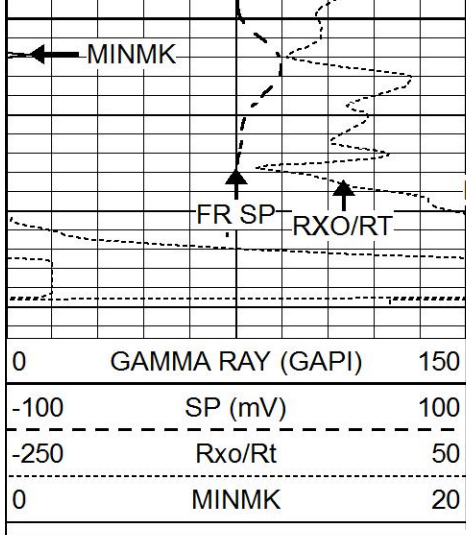
5100

5150

5200

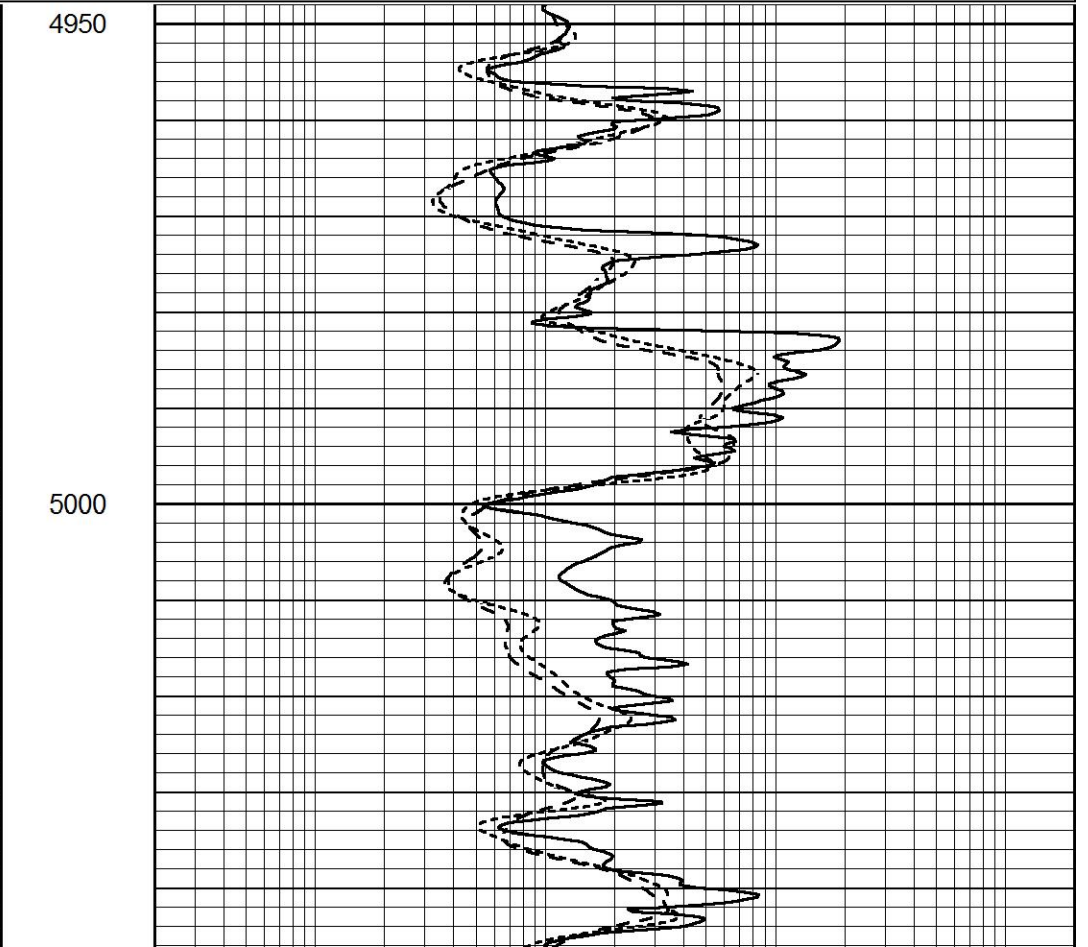
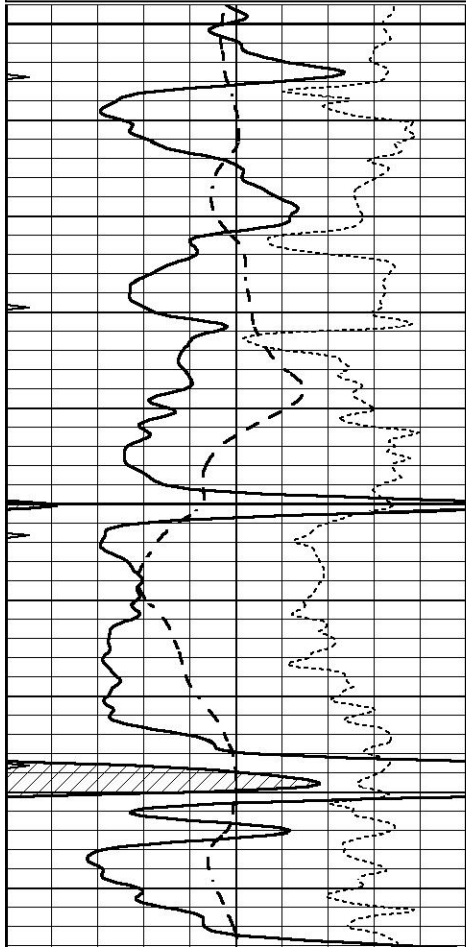
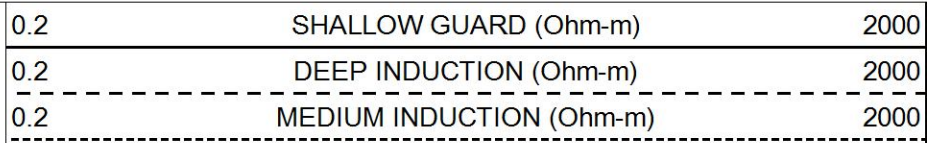
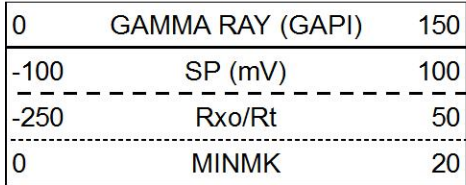
FR GR

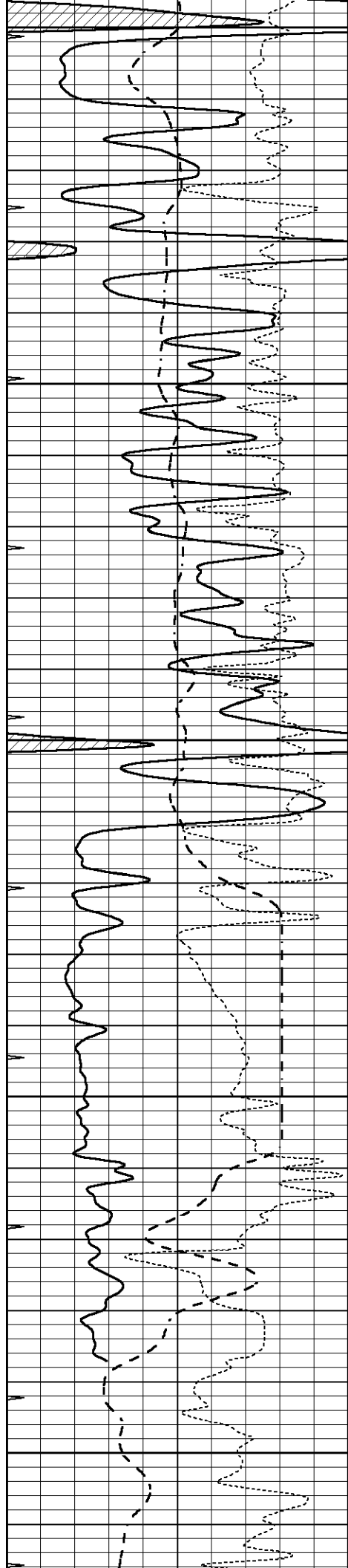




REPEAT SECTION

Database File 8334pe.db
 Dataset Pathname pass3.1R
 Presentation Format _dil
 Dataset Creation Sun Nov 05 18:22:05 2023
 Charted by Depth in Feet scaled 1:240





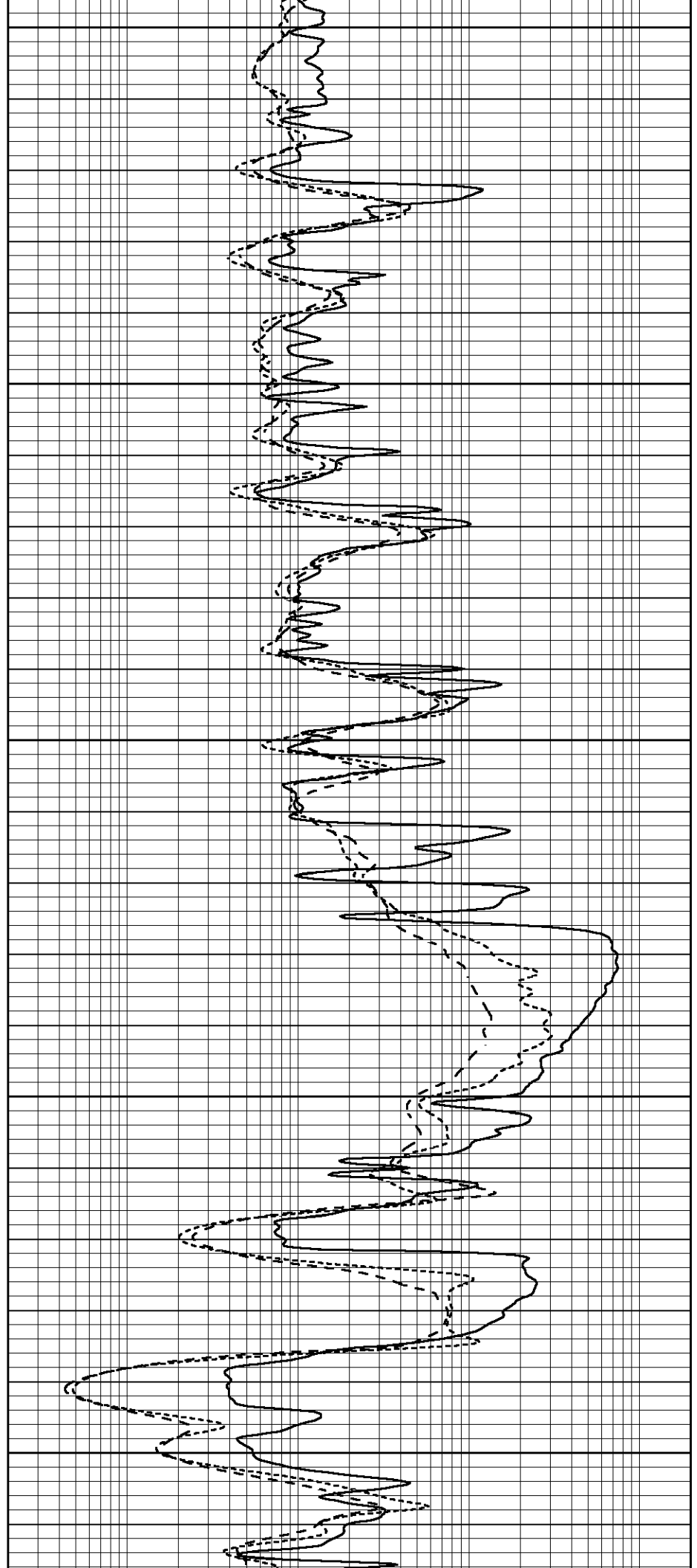
5050

5100

5150

5200

5250



Window 2	1435.6	8495.4	2920.3	2720.3	cps
Window 3	1167.4	4527.9	1868.6	1810.1	cps
Window 4	344.6	343.5	346.7	342.3	cps
Long Space	0.0	7059.8	1484.8	1284.7	cps
Short Space	3.3	2502.7	1618.3	1368.5	cps
Rho		1.7100	2.5900	0.0000	g/cc
Pe		2.0000	2.7500	5.7900	
Rib Angle	: 44.4	Rib Slope	: 0.979	Density/Spine Ratio	: 0.544
Spine Angle	: 74.4	Spine Slope	: 3.576	Spine Intercept	: -19.1

Before Survey Verification

Performed Wed Dec 31 18:00:00 1969

Window 1	0.0	0.0	0.0	0.0	cps
Window 2	0.0	0.0	0.0	0.0	cps
Window 3	0.0	0.0	0.0	0.0	cps
Window 4	0.0	0.0	0.0	0.0	cps
Long Space	0.0	0.0	0.0	0.0	cps
Short Space	0.0	0.0	0.0	0.0	cps
Measured Rho		0.0000	0.0000	0.0000	g/cc
Measured Correction		0.0000	0.0000	0.0000	g/cc
Measured Pe			0.0000	0.0000	

After Survey Verification

Performed Wed Dec 31 18:00:00 1969

Window 1	0.0	0.0	0.0	0.0	cps
Window 2	0.0	0.0	0.0	0.0	cps
Window 3	0.0	0.0	0.0	0.0	cps
Window 4	0.0	0.0	0.0	0.0	cps
Long Space	0.0	0.0	0.0	0.0	cps
Short Space	0.0	0.0	0.0	0.0	cps
Measured Rho		0.0000	0.0000	0.0000	g/cc
Measured Correction		0.0000	0.0000	0.0000	g/cc
Measured Pe			0.0000	0.0000	

Compensated Neutron Calibration Report

Serial Number: 070808PMC
Tool Model: NABORS

PRE-SURVEY VERIFICATION

Detector	Readings	Measured	Target
Short Space	cps		
Long Space	cps	pu	pu

POST-SURVEY VERIFICATION

Detector	Readings	Measured	Target
Short Space	cps		
Long Space	cps	pu	pu

Gamma Ray Calibration Report

Serial Number: 070558
Tool Model: OPEN_GR
Performed: Mon Oct 30 20:27:00 2023

Calibrator Value: 1.0 GAPI

Background Reading:	0.0	cps
Calibrator Reading:	1.0	cps
Sensitivity:	0.3000	GAPI/cps