



**COMPENSATED  
DENSITY/NEUTRON  
PE LOG**

**Company** VINCENT OIL CORPORATION  
**Well** C&D HERRMANN #1-5  
**Field** WILDFIRE  
**County** FORD **State** KANSAS

**Location:** API #: 15-057-21098-0000  
 2300' FNL & 444' FWL  
 NE - SW - SW - NW  
 SEC 5 TWP 29S RGE 23W  
**Permanent Datum** GROUND LEVEL **Elevation** 2482  
**Log Measured From** KELLY BUSHING 12' A.G.L.  
**Drilling Measured From** KELLY BUSHING  
**Other Services**  
 DILMEL  
 SONIC  
**Elevation**  
 K.B. 2494  
 D.F. 2492  
 G.L. 2482

<b>Company</b>	VINCENT OIL CORPORATION
<b>Well</b>	C&D HERRMANN #1-5
<b>Field</b>	WILDFIRE
<b>County</b>	FORD
<b>State</b>	KANSAS
<b>Date</b>	11/5/23
<b>Run Number</b>	ONE
<b>Depth Driller</b>	5274
<b>Depth Logger</b>	5276
<b>Bottom Logged Interval</b>	5252
<b>Top Log Interval</b>	4200
<b>Casing Driller</b>	8.625@583
<b>Casing Logger</b>	578
<b>Bit Size</b>	7.785
<b>Type Fluid in Hole</b>	CHEMICAL MUD
<b>Density / Viscosity</b>	9.3/53
<b>pH / Fluid Loss</b>	11.0/8.4
<b>Source of Sample</b>	FLOWLINE
<b>Rm @ Meas. Temp</b>	.700@78F
<b>Rmf @ Meas. Temp</b>	.525@78F
<b>Rmc @ Meas. Temp</b>	.840@78F
<b>Source of Rmf / Rmc</b>	MEASUREMENT
<b>Rm @ BHT</b>	.430@127F
<b>Time Circulation Stopped</b>	3 HOURS
<b>Time Logger on Bottom</b>	4:00 P.M.
<b>Maximum Recorded Temperature</b>	127F
<b>Equipment Number</b>	922339
<b>Location</b>	HAYS, KANSAS
<b>Recorded By</b>	JEFF LUEBBERS
<b>Witnessed By</b>	TOM DUDGEON
	JEREMY PASEK

<<< Fold Here >>>

All interpretations are opinions based on inferences from electrical or other measurements and we cannot and do not guarantee the accuracy or correctness of any interpretation, and we shall not, except in the case of gross or willful negligence on our part, be liable or responsible for any loss, costs, damages, or expenses incurred or sustained by anyone resulting from any interpretation made by any of our officers, agents or employees. These interpretations are also subject to our general terms and conditions set out in our current Price Schedule.

15-057-21098-0000 Comments

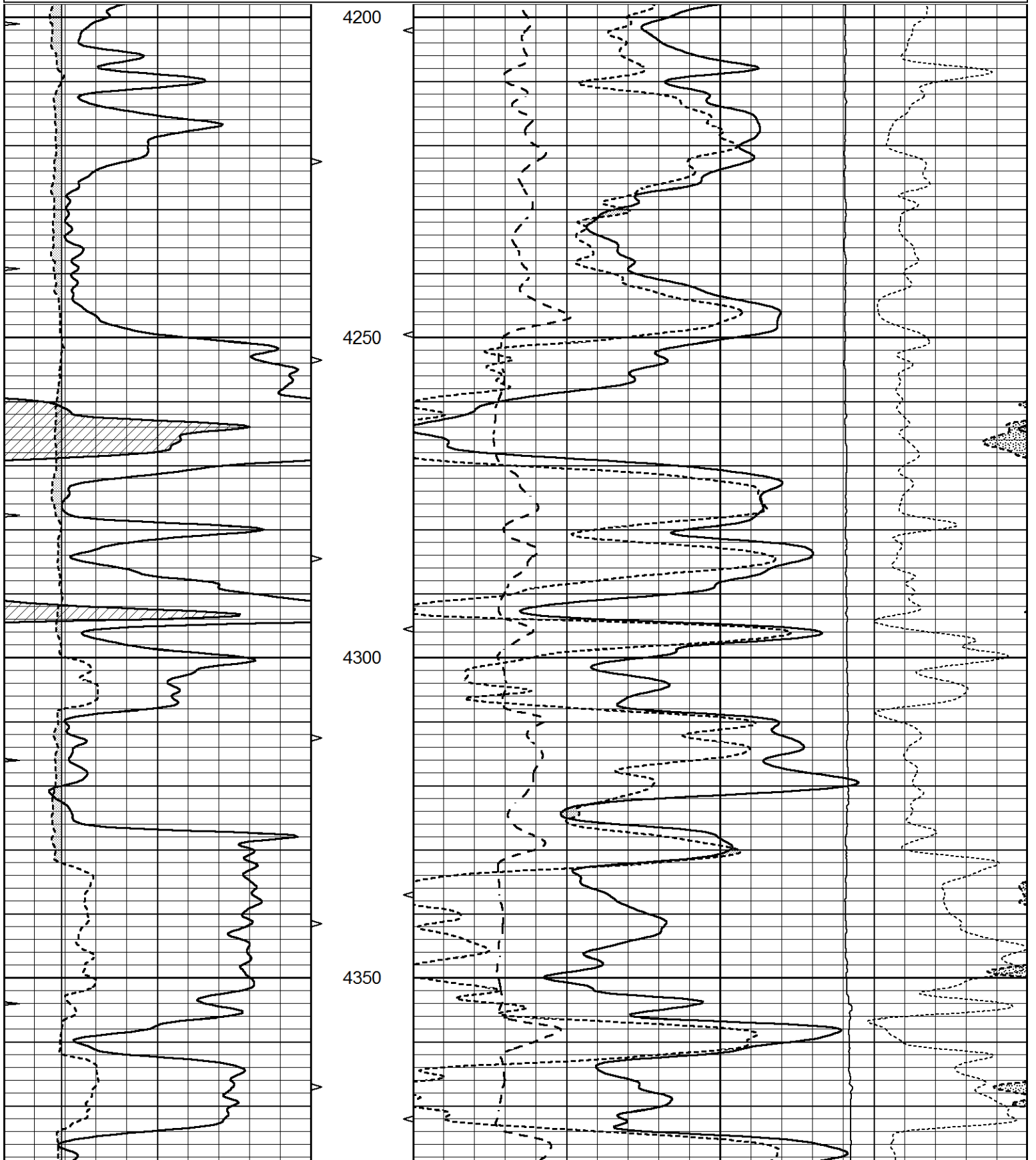
THANK YOU FOR USING ELI WIRELINE HAYS. KANSAS (785) 628-6395  
 DIRECTIONS  
 KINGSDOWN, KS. 2N ON "RD 125" TO WILBURN RD, 5W. TO "RD. 120", 1S., 1W. TO MAILBOX, N.  
 INTO PAST FARMSTEAD

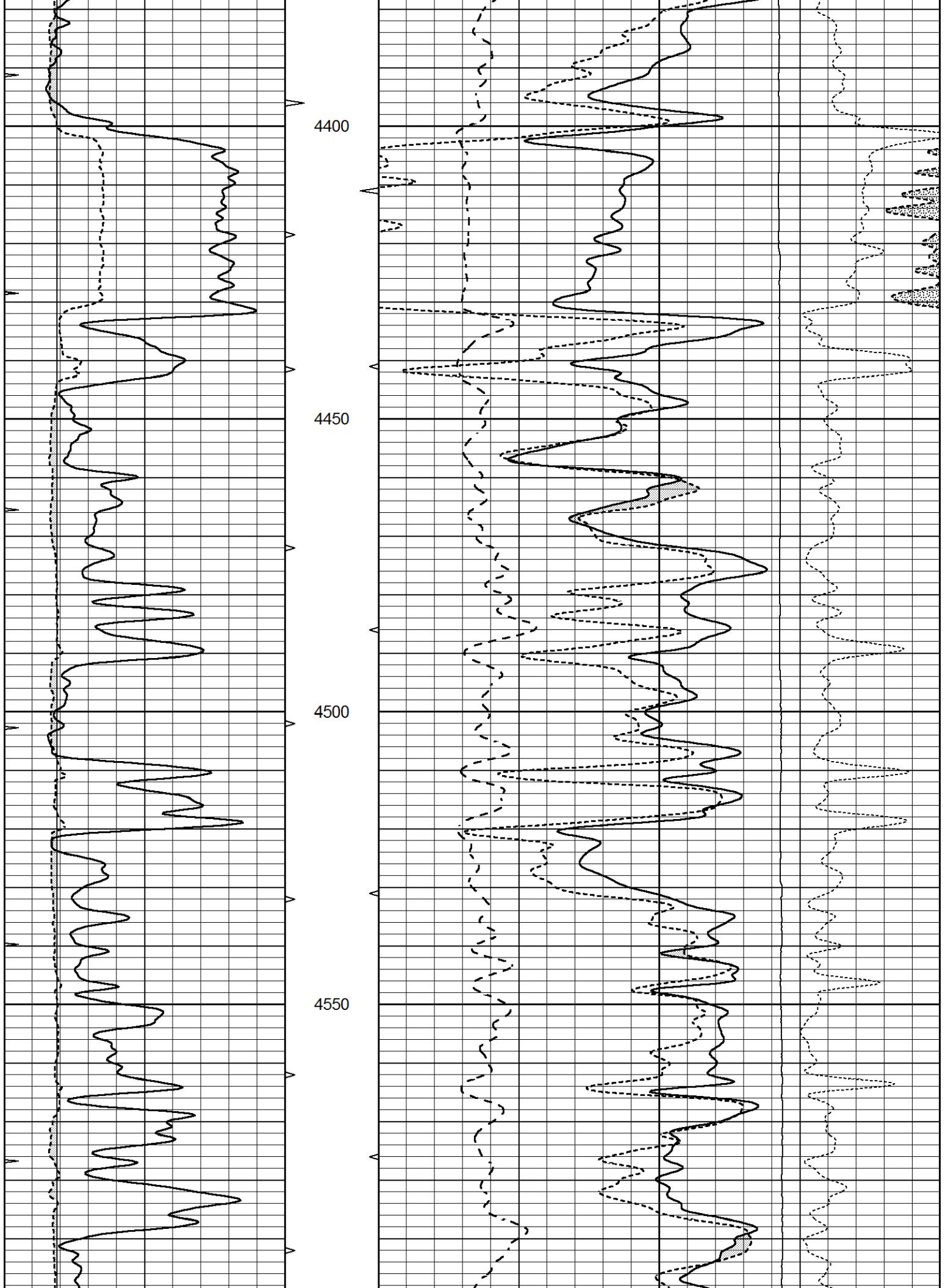


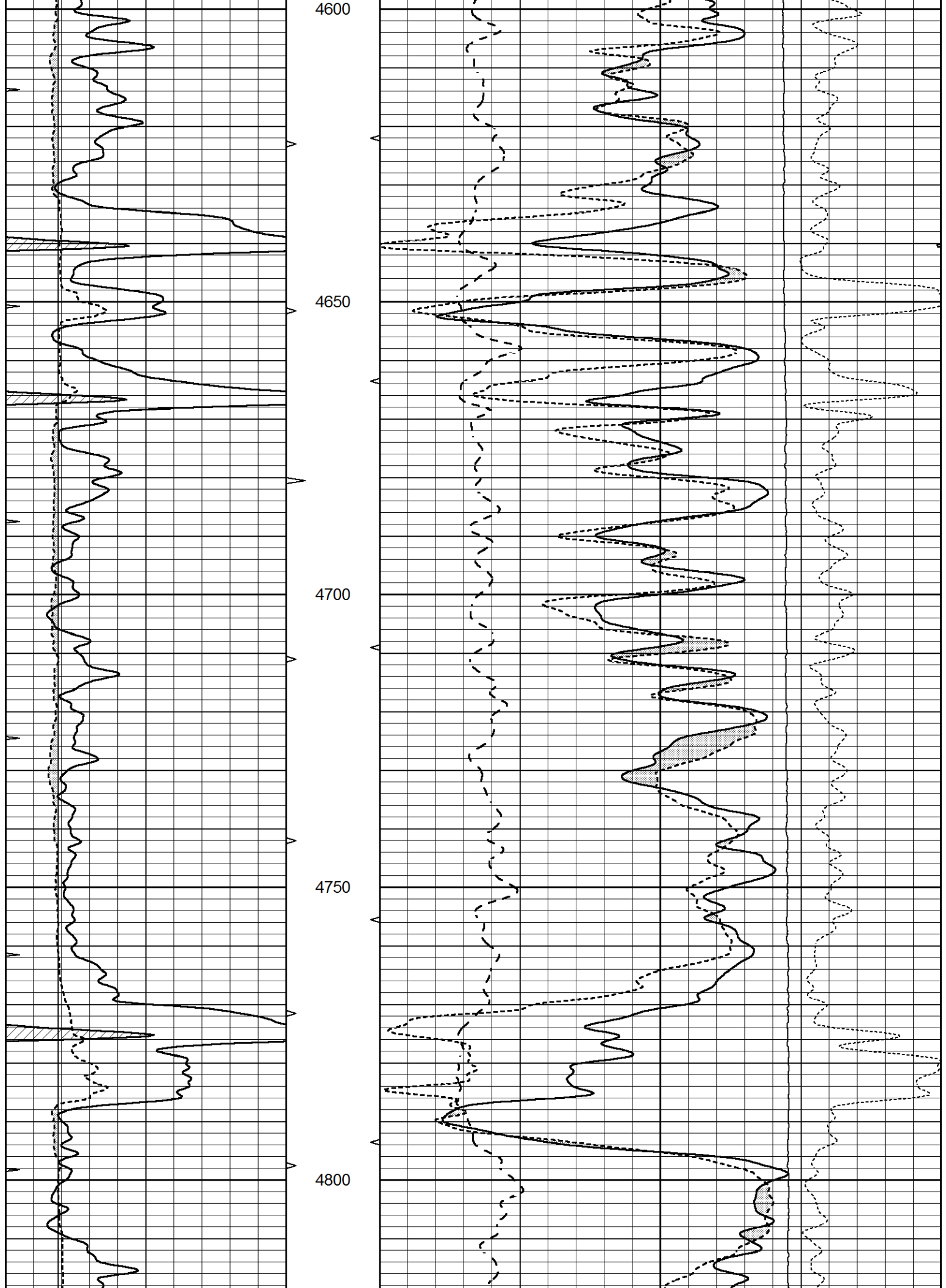
**MAIN SECTION**

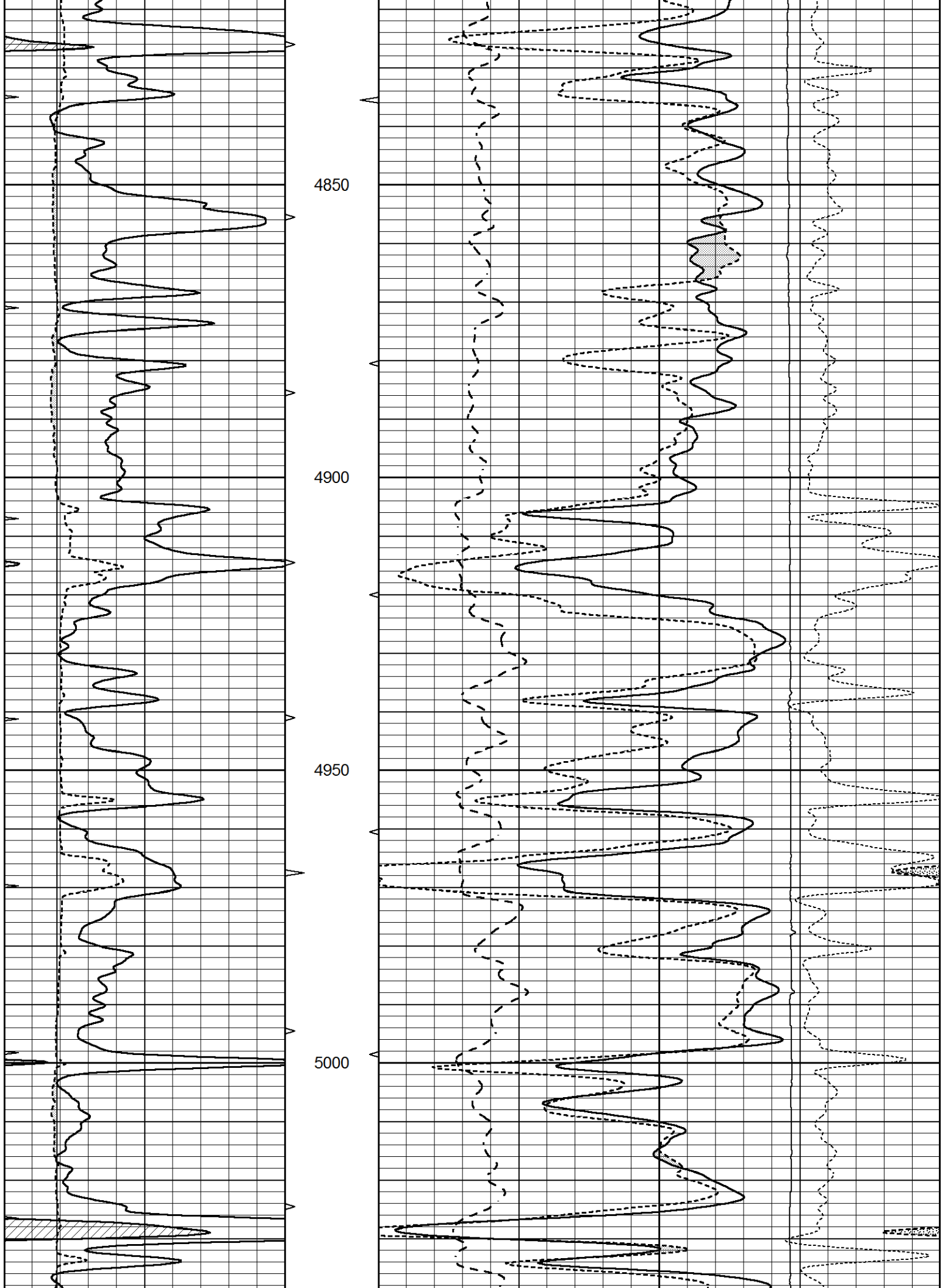
Database File 8334pe.db  
 Dataset Pathname pass4.1M  
 Presentation Format \_ldt\_neu  
 Dataset Creation Sun Nov 05 18:20:48 2023  
 Charted by Depth in Feet scaled 1:240

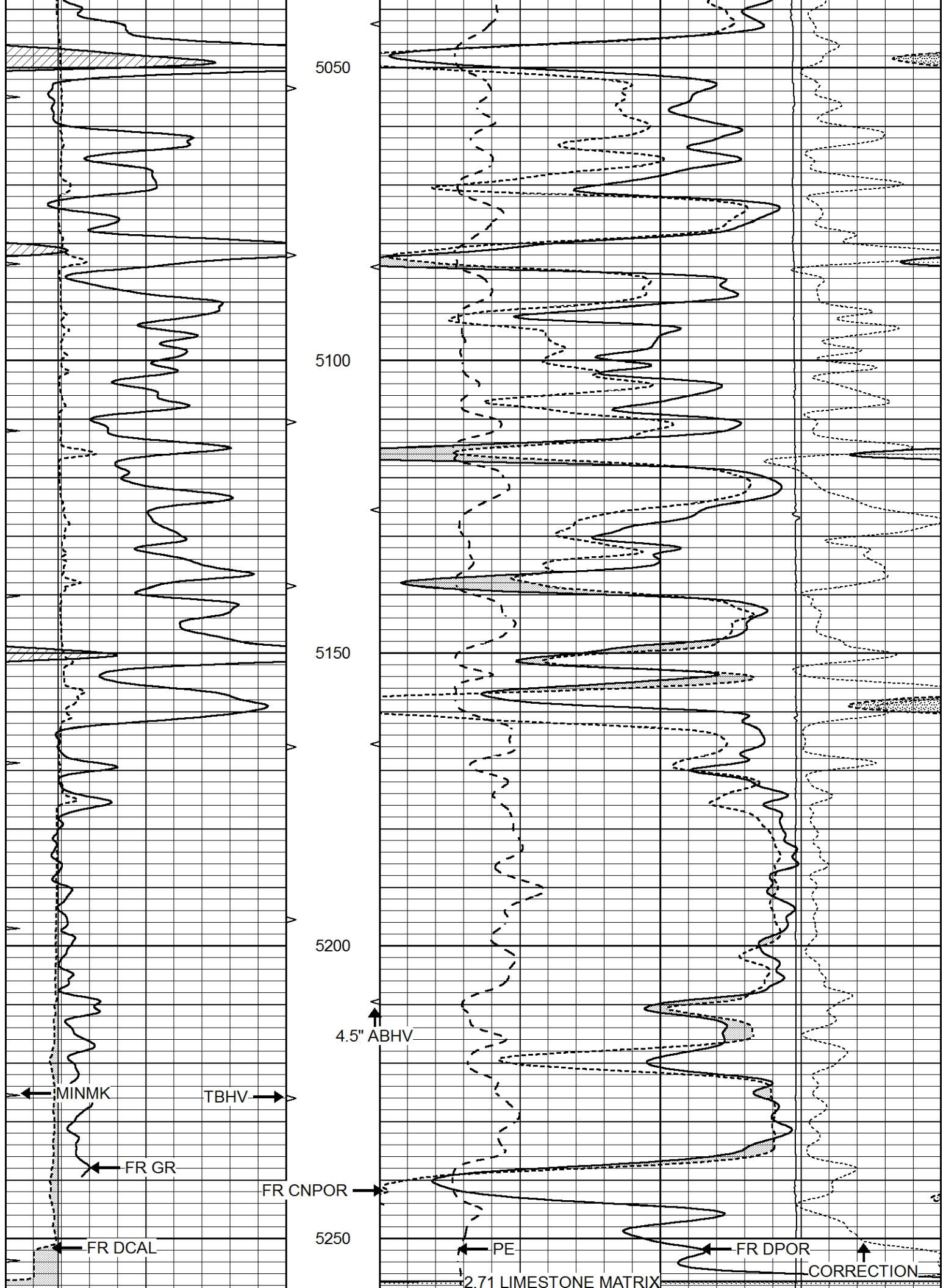
0	GAMMA RAY (GAPI)	150	ABHV	30	COMPENSATED DENSITY (pu)			-10	
6	CALIPER (in)	16	10 (ft3)	0	COMPENSATED NEUTRON (pu)			-10	
0	MINMK	20	TBHV	0	PE	10	-0.25	CORRECTION (g/cc)	0.25
			0 (ft3)	10			0	LTEN (lb)	5000

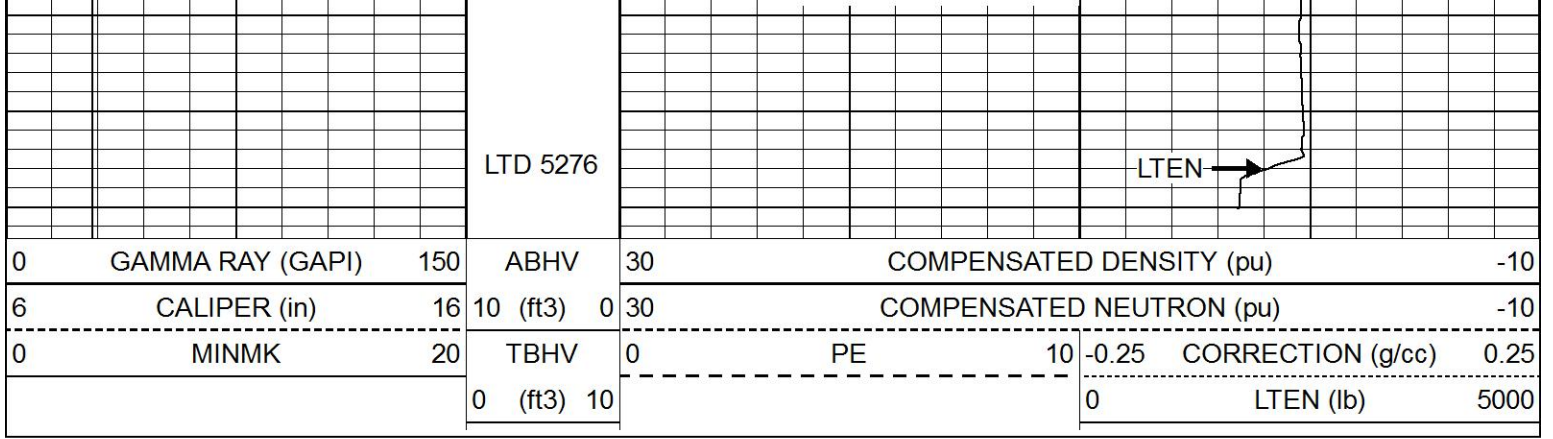






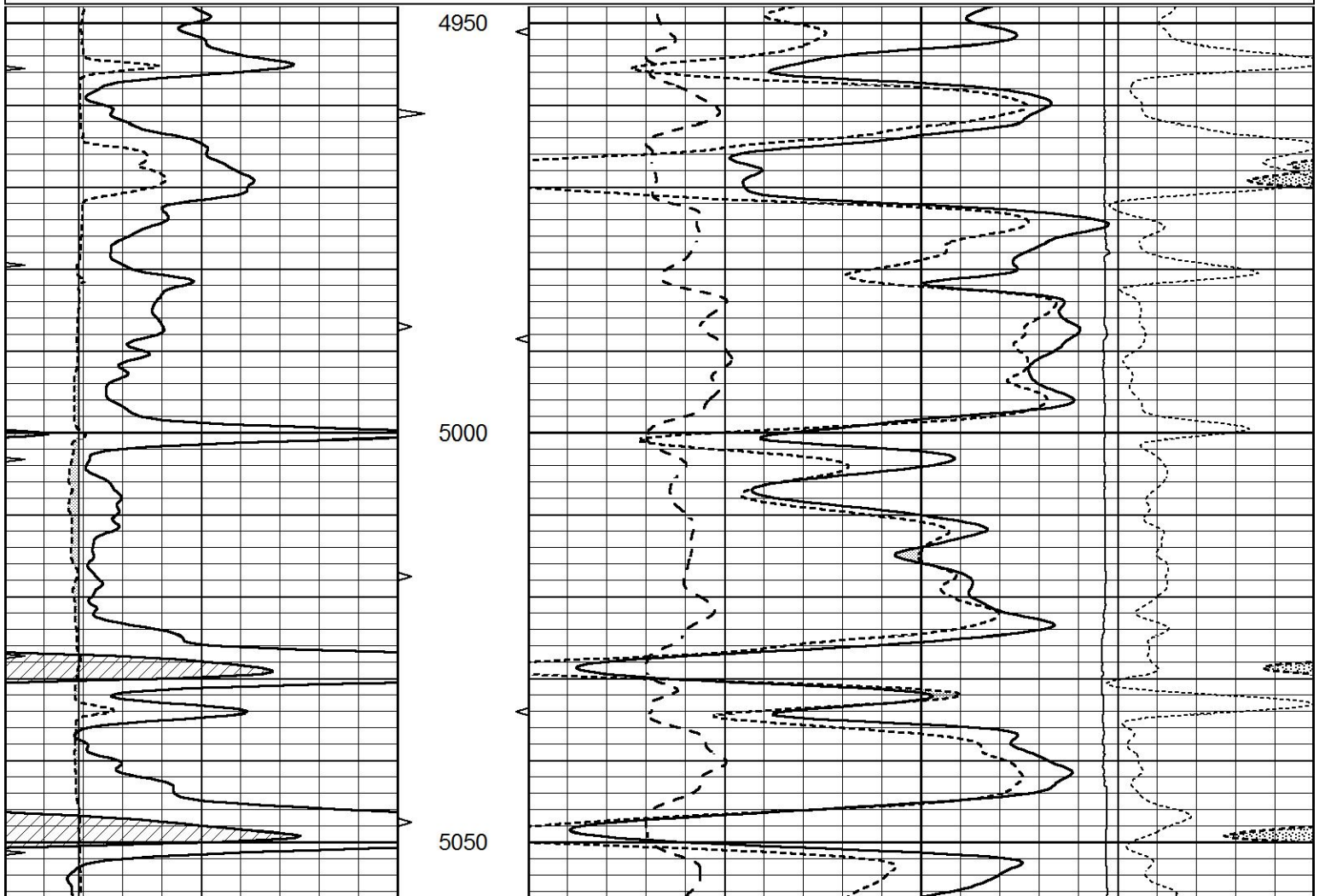
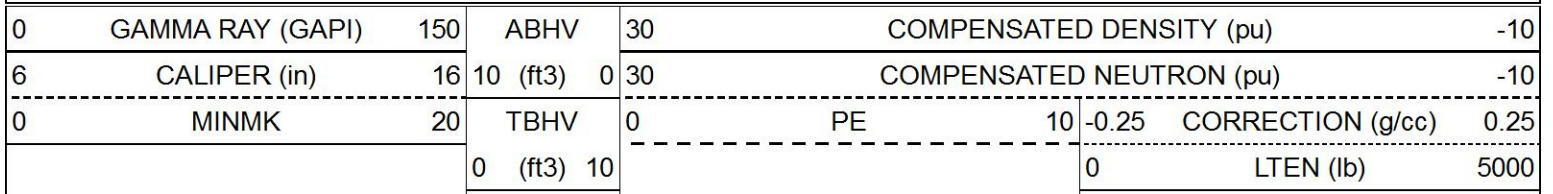


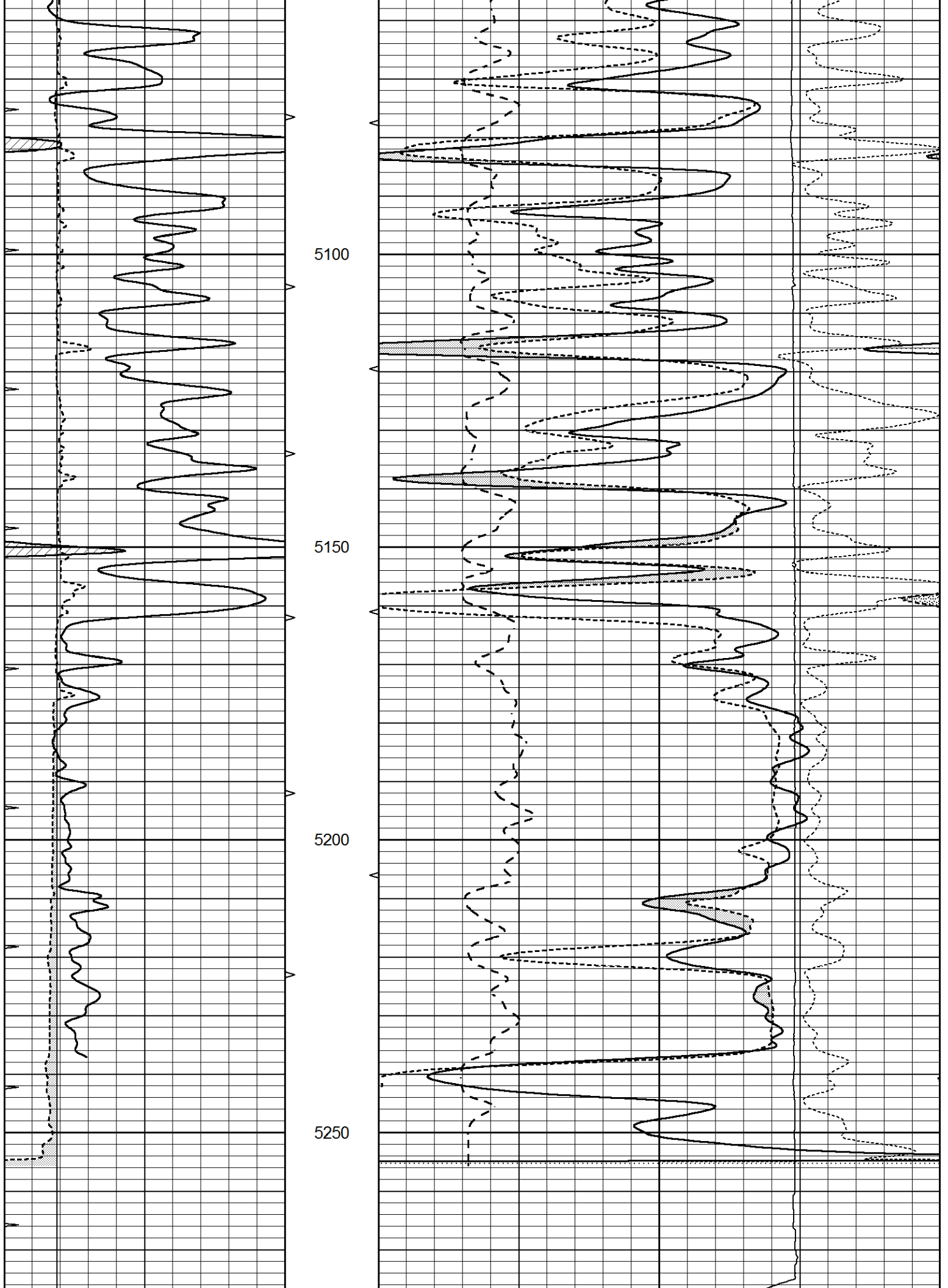




# REPEAT SECTION

Database File 8334pe.db  
 Dataset Pathname pass3.1R  
 Presentation Format \_ldt\_neu  
 Dataset Creation Sun Nov 05 18:22:05 2023  
 Charted by Depth in Feet scaled 1:240





0	GAMMA RAY (GAPI)	150	ABHV	30	COMPENSATED DENSITY (pu)				-10
6	CALIPER (in)	16	10 (ft3) 0	30	COMPENSATED NEUTRON (pu)				-10
0	MINMK	20	TBHV	0	PE	10	-0.25	CORRECTION (g/cc)	0.25
			0 (ft3) 10				0	LTEN (lb)	5000

### Calibration Report

Database File 8334pe.db  
Dataset Pathname pass4.1M  
Dataset Creation Sun Nov 05 18:20:48 2023

### Dual Induction Calibration Report

Serial-Model: PROBE8-DILG  
Surface Cal Performed: Sun Nov 05 17:33:13 2023  
Downhole Cal Performed: Mon Aug 14 00:39:25 2023  
After Survey Verification Performed: Mon Jul 28 11:08:27 2008

#### Surface Calibration

Loop:	Readings				References			Results	
	Air	Loop			Air	Loop		m	b
Deep	0.015	0.648	V	0.000	400.000	mmho/m	660.000	0.000	
Medium	0.029	0.796	V	0.000	464.000	mmho/m	650.000	-8.000	
Internal:	Zero	Cal		Zero	Cal		m	b	
Deep	0.017	0.657	V	0.000	400.000	mmho/m	625.153	-10.619	
Medium	0.016	0.757	V	0.000	464.000	mmho/m	625.992	-9.739	

#### Downhole Calibration

	Readings				References			Results	
	Zero	Cal			Zero	Cal		m'	b'
Deep	0.000	0.000	mmho/m	2.011	405.777	mmho/m	1.000	0.000	
Medium	0.000	0.000	mmho/m	7.590	503.393	mmho/m	1.000	0.000	
LL3		7.500	V		1500.000	Ohm-m			
		0.000	V		20.000	Ohm-m			
		-7.200	V		3800.000	mmho-m			

#### After Survey Verification

	Readings				Targets			Results	
	Zero	Cal			Zero	Cal		m'	b'
Deep	0.000	0.000	mmho/m	0.000	0.000	mmho/m	0.000	0.000	
Medium	0.000	0.000	mmho/m	0.000	0.000	mmho/m	0.000	0.000	
LL3		1.000	Ohm-m		1.000	Ohm-m			
		0.000	Ohm-m		0.000	Ohm-m			
		1.000	mmho-m		1.000	mmho-m			

### Litho Density Calibration Report

Serial: 001 Model: PRB

#### Master Calibration

Performed Tue Aug 02 14:54:49 2022

	Background	Magnesium	Aluminum	Aluminum+Fe	
Window 1	1540.1	9840.1	3279.8	3001.8	cps
Window 2	1435.6	8495.4	2920.3	2720.3	cps
Window 3	1167.4	4527.9	1868.6	1810.1	cps
Window 4	344.6	343.5	346.7	342.3	cps
Long Space	0.0	7059.8	1484.8	1284.7	cps

Long Space	0.0	7059.8	1484.8	1204.7	cps
Short Space	3.3	2502.7	1618.3	1368.5	cps
Rho		1.7100	2.5900	0.0000	g/cc
Pe		2.0000	2.7500	5.7900	

Rib Angle	: 44.4	Rib Slope	: 0.979	Density/Spine Ratio	: 0.544
Spine Angle	: 74.4	Spine Slope	: 3.576	Spine Intercept	: -19.1

Before Survey Verification

Performed Wed Dec 31 18:00:00 1969

Window 1	0.0	0.0	0.0	0.0	cps
Window 2	0.0	0.0	0.0	0.0	cps
Window 3	0.0	0.0	0.0	0.0	cps
Window 4	0.0	0.0	0.0	0.0	cps
Long Space	0.0	0.0	0.0	0.0	cps
Short Space	0.0	0.0	0.0	0.0	cps
Measured Rho		0.0000	0.0000	0.0000	g/cc
Measured Correction		0.0000	0.0000	0.0000	g/cc
Measured Pe			0.0000	0.0000	

After Survey Verification

Performed Wed Dec 31 18:00:00 1969

Window 1	0.0	0.0	0.0	0.0	cps
Window 2	0.0	0.0	0.0	0.0	cps
Window 3	0.0	0.0	0.0	0.0	cps
Window 4	0.0	0.0	0.0	0.0	cps
Long Space	0.0	0.0	0.0	0.0	cps
Short Space	0.0	0.0	0.0	0.0	cps
Measured Rho		0.0000	0.0000	0.0000	g/cc
Measured Correction		0.0000	0.0000	0.0000	g/cc
Measured Pe			0.0000	0.0000	

Compensated Neutron Calibration Report

Serial Number: 070808PMC  
Tool Model: NABORS

PRE-SURVEY VERIFICATION

Detector	Readings	Measured	Target
Short Space	cps		
Long Space	cps	pu	pu

POST-SURVEY VERIFICATION

Detector	Readings	Measured	Target
Short Space	cps		
Long Space	cps	pu	pu

Gamma Ray Calibration Report

Serial Number: 070558  
Tool Model: OPEN\_GR  
Performed: Mon Oct 30 20:27:00 2023

Calibrator Value: 1.0 GAPI

Background Reading: 0.0 cps  
Calibrator Reading: 1.0 cps

Sensitivity:

0.3000

GAPI/cps