

MICRO LOG



Company VINCENT OIL CORPORATION
 Well C&D HERRMANN #1-5
 Field WILDFIRE
 County FORD State KANSAS

Location: API #: 15-057-21098-0000
 2300' FNL & 444' FWL
 NE - SW - SW - NW
 SEC 5 TWP 29S RGE 23W
 Permanent Datum GROUND LEVEL Elevation 2482
 Log Measured From KELLY BUSHING 12' A.G.L.
 Drilling Measured From KELLY BUSHING
 Other Services CDL/CNL/PE DIL/SONIC
 Elevation K.B. 2494 D.F. 2492 G.L. 2482

Company	VINCENT OIL CORPORATION
Well	C&D HERRMANN #1-5
Field	WILDFIRE
County	FORD
State	KANSAS
Date	11/5/23
Run Number	TWO
Depth Driller	5274
Depth Logger	5276
Bottom Logged Interval	5260
Top Log Interval	4200
Casing Driller	8.625@583
Casing Logger	578
Bit Size	7.785
Type Fluid in Hole	CHEMICAL MUD
Density / Viscosity	9.3/53
pH / Fluid Loss	11.0/8.4
Source of Sample	FLOWLINE
Rm @ Meas. Temp	.700@78F
Rmf @ Meas. Temp	.525@78F
Rmc @ Meas. Temp	.840@78F
Source of Rmf / Rmc	MEASUREMENT
Rm @ BHT	.430@127F
Time Circulation Stopped	4.5 HOURS
Time Logger on Bottom	6:00 P.M.
Maximum Recorded Temperature	127F
Equipment Number	922339
Location	HAYS, KANSAS
Recorded By	JEFF LUEBBERS
Witnessed By	TOM DUDGEON
	JEREMY PASEK

<<< Fold Here >>>

All interpretations are opinions based on inferences from electrical or other measurements and we cannot and do not guarantee the accuracy or correctness of any interpretation, and we shall not, except in the case of gross or willful negligence on our part, be liable or responsible for any loss, costs, damages, or expenses incurred or sustained by anyone resulting from any interpretation made by any of our officers, agents or employees. These interpretations are also subject to our general terms and conditions set out in our current Price Schedule.

15-057-21098-0000 Comments

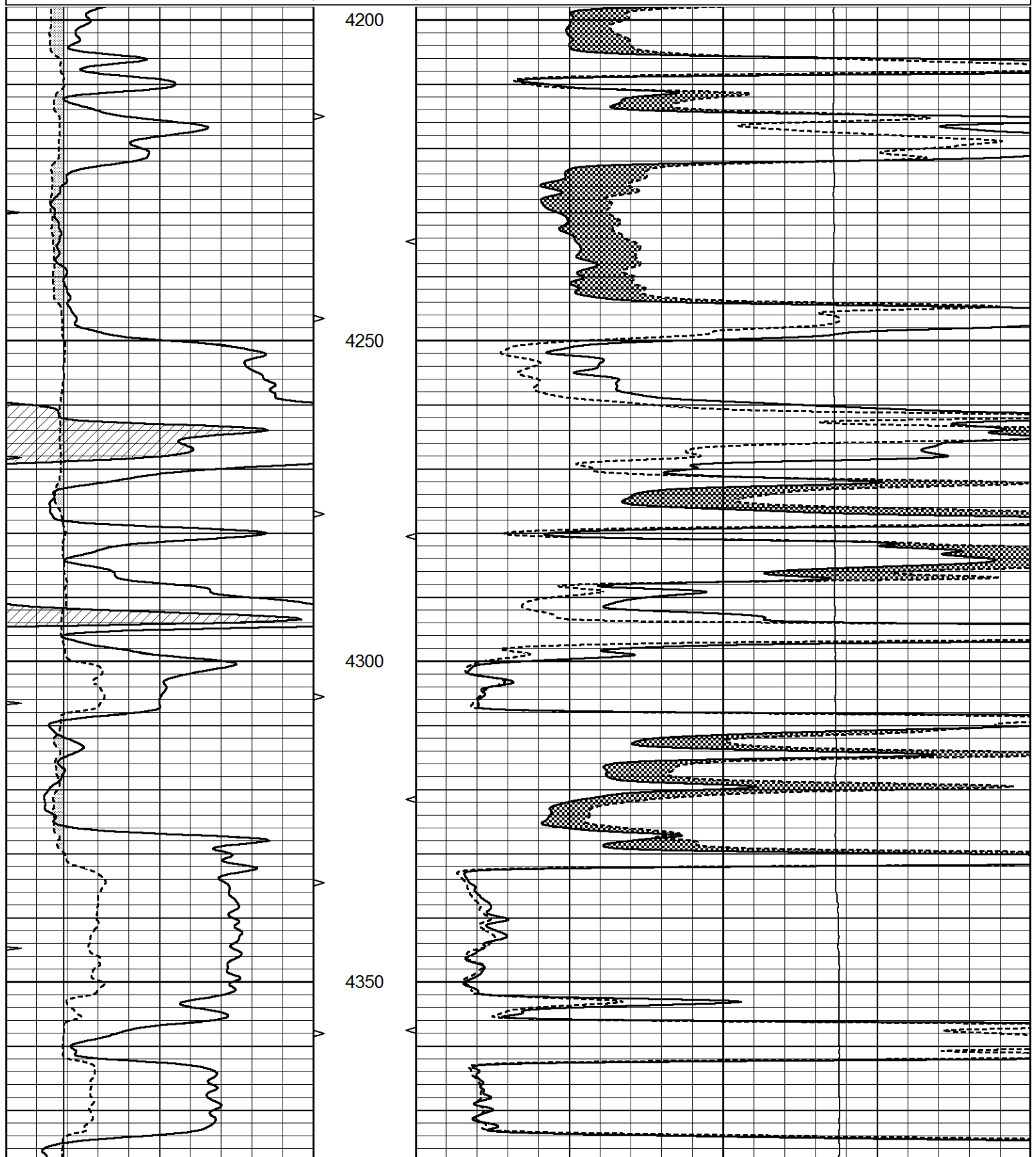
THANK YOU FOR USING ELI WIRELINE HAYS. KANSAS (785) 628-6395
 DIRECTIONS
 KINGSDOWN, KS. 2N ON "RD 125" TO WILBURN RD, 5W. TO "RD. 120", 1S., 1W. TO MAILBOX, N.
 INTO PAST FARMSTEAD

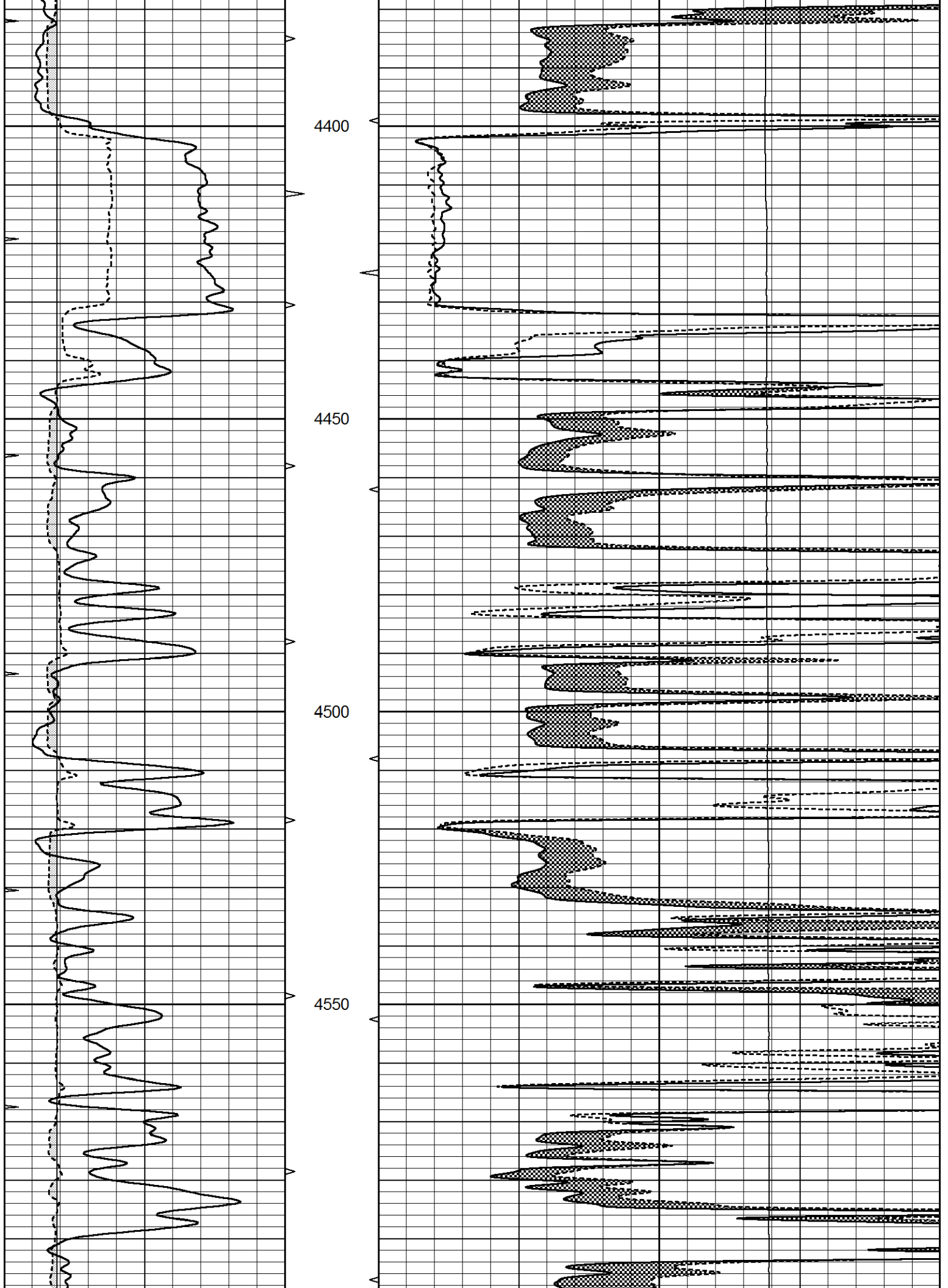


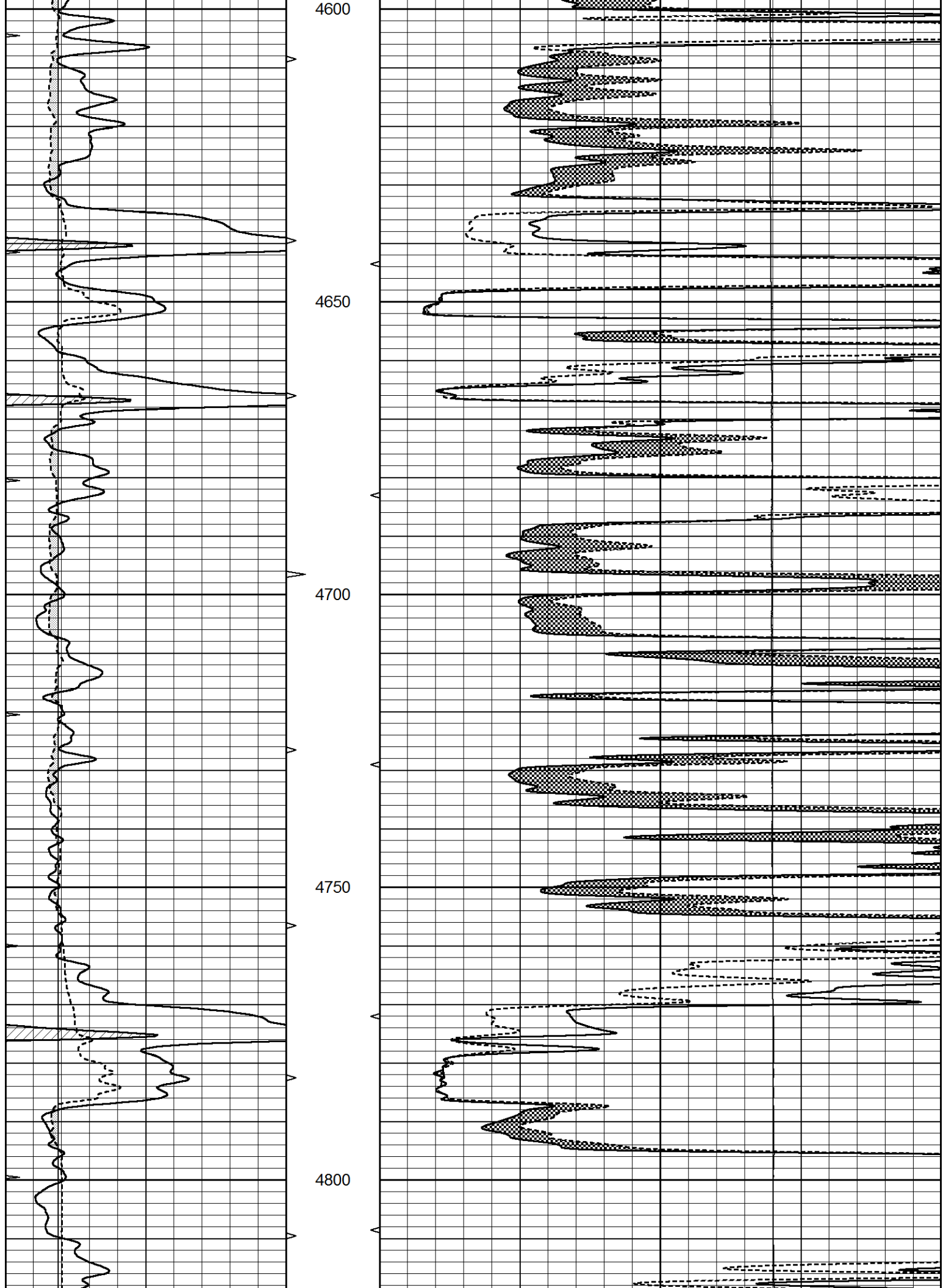
MAIN SECTION

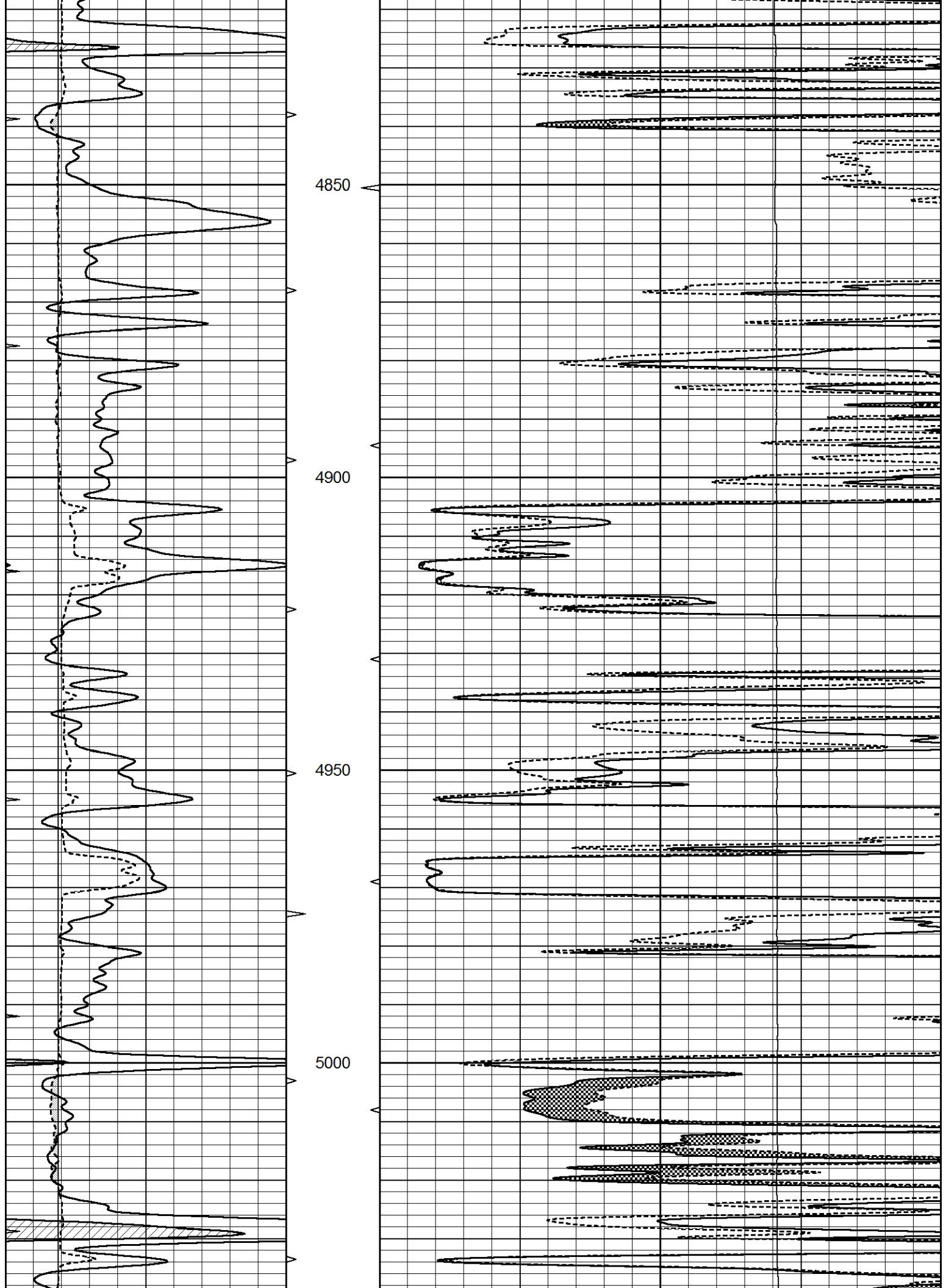
Database File 8334pe.db
 Dataset Pathname pass9.1
 Presentation Format _micro
 Dataset Creation Sun Nov 05 19:34:57 2023
 Charted by Depth in Feet scaled 1:240

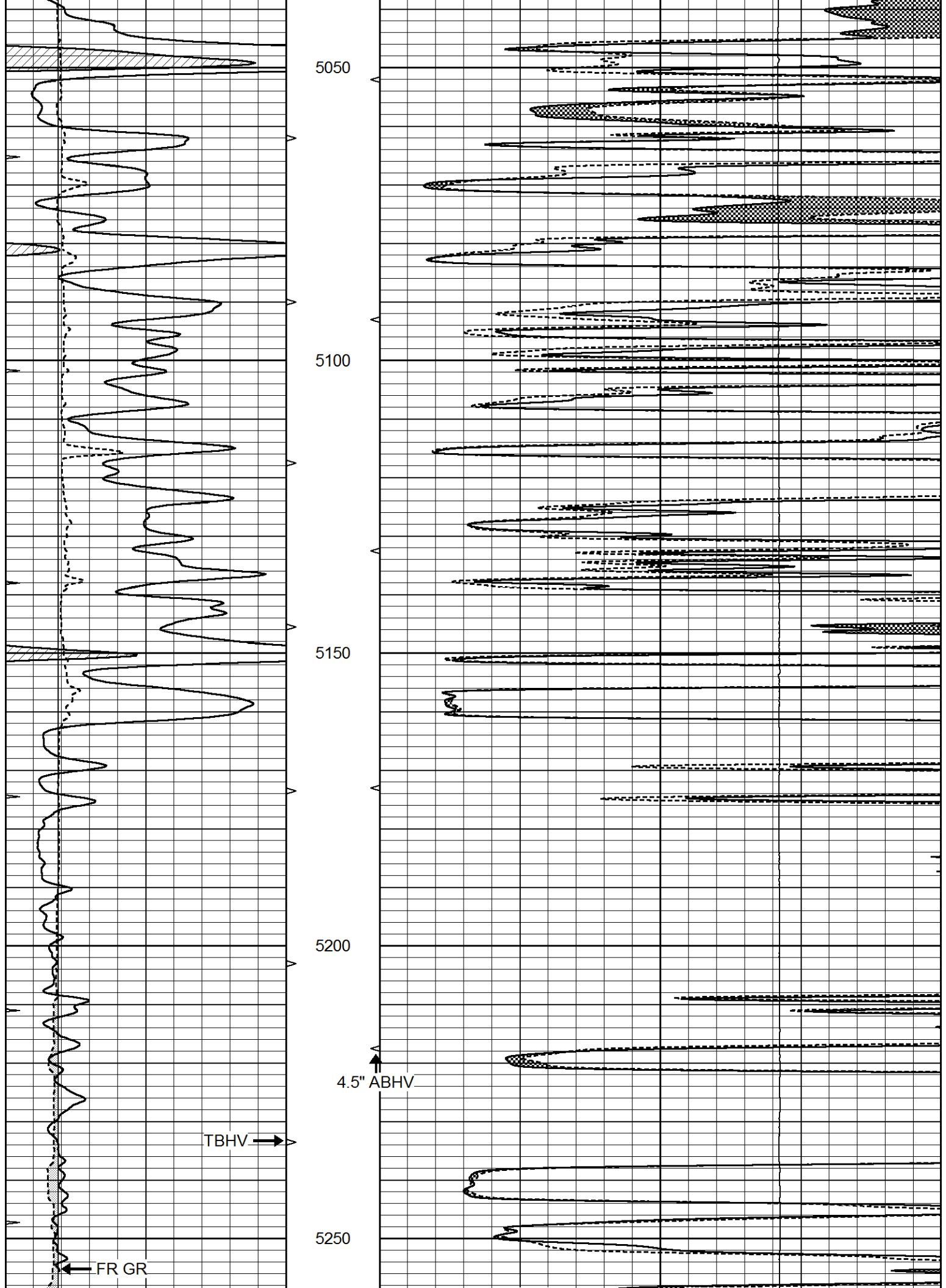
0	GAMMA RAY (GAPI)	150	ABHV	0	MEL1.5 (Ohm-m)	40
6	CALIPER (in)	16	10 (ft3)	0	MEL2.0 (Ohm-m)	40
0	MINMK	20	TBHV	0	LTEN (lb)	5000
			0 (ft3)	10		

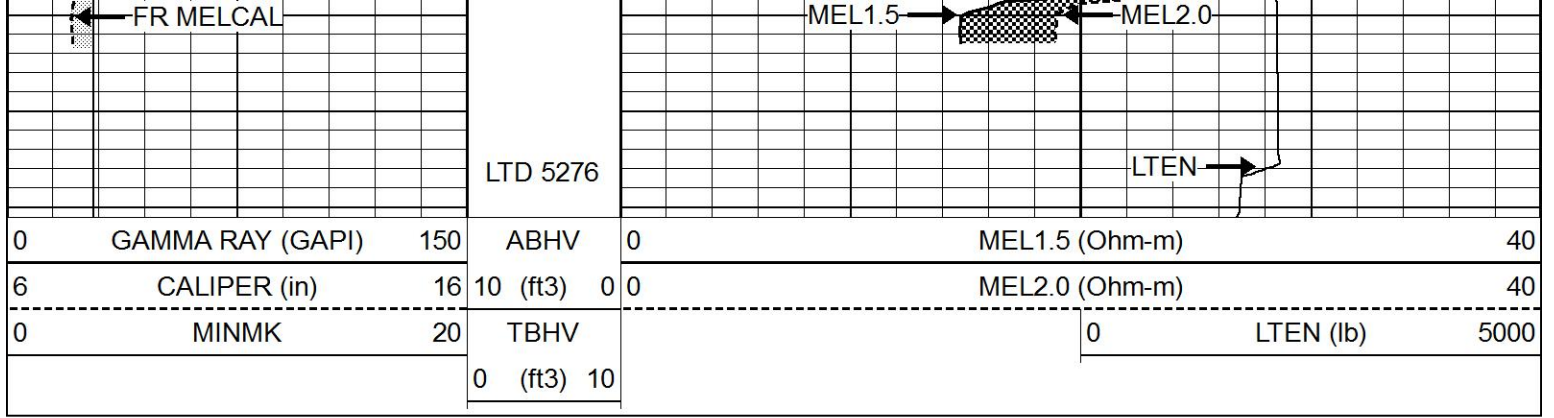






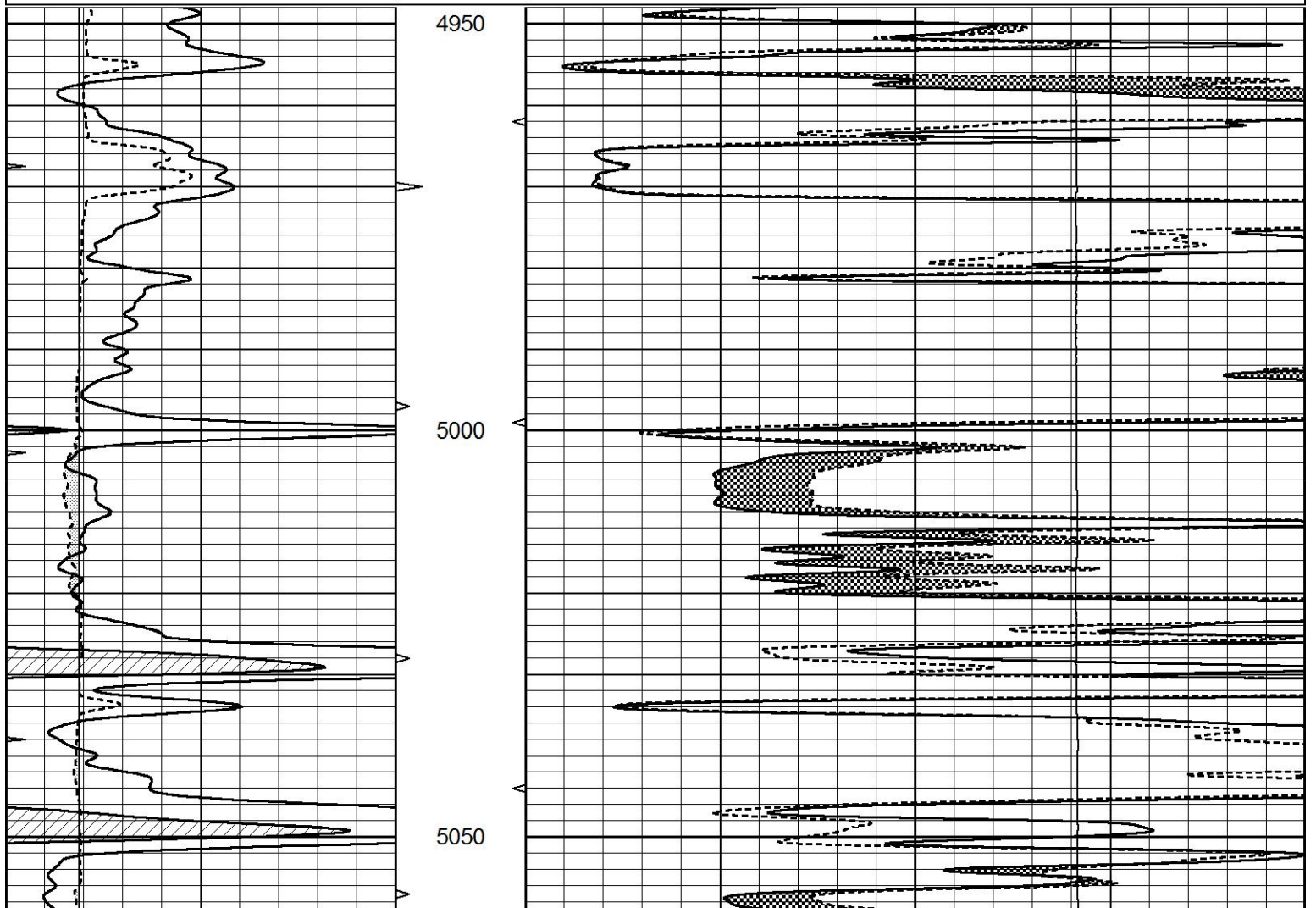
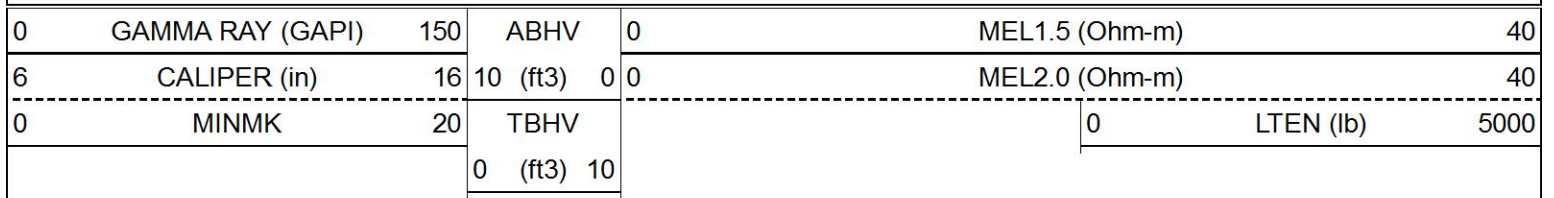


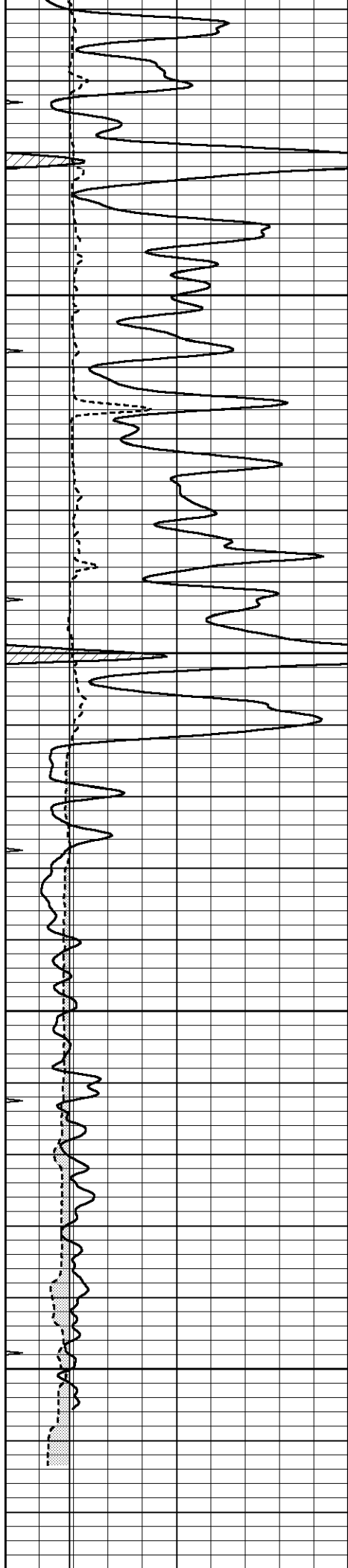




REPEAT SECTION

Database File 8334pe.db
 Dataset Pathname pass6.2
 Presentation Format _micro
 Dataset Creation Sun Nov 05 19:02:33 2023
 Charted by Depth in Feet scaled 1:240



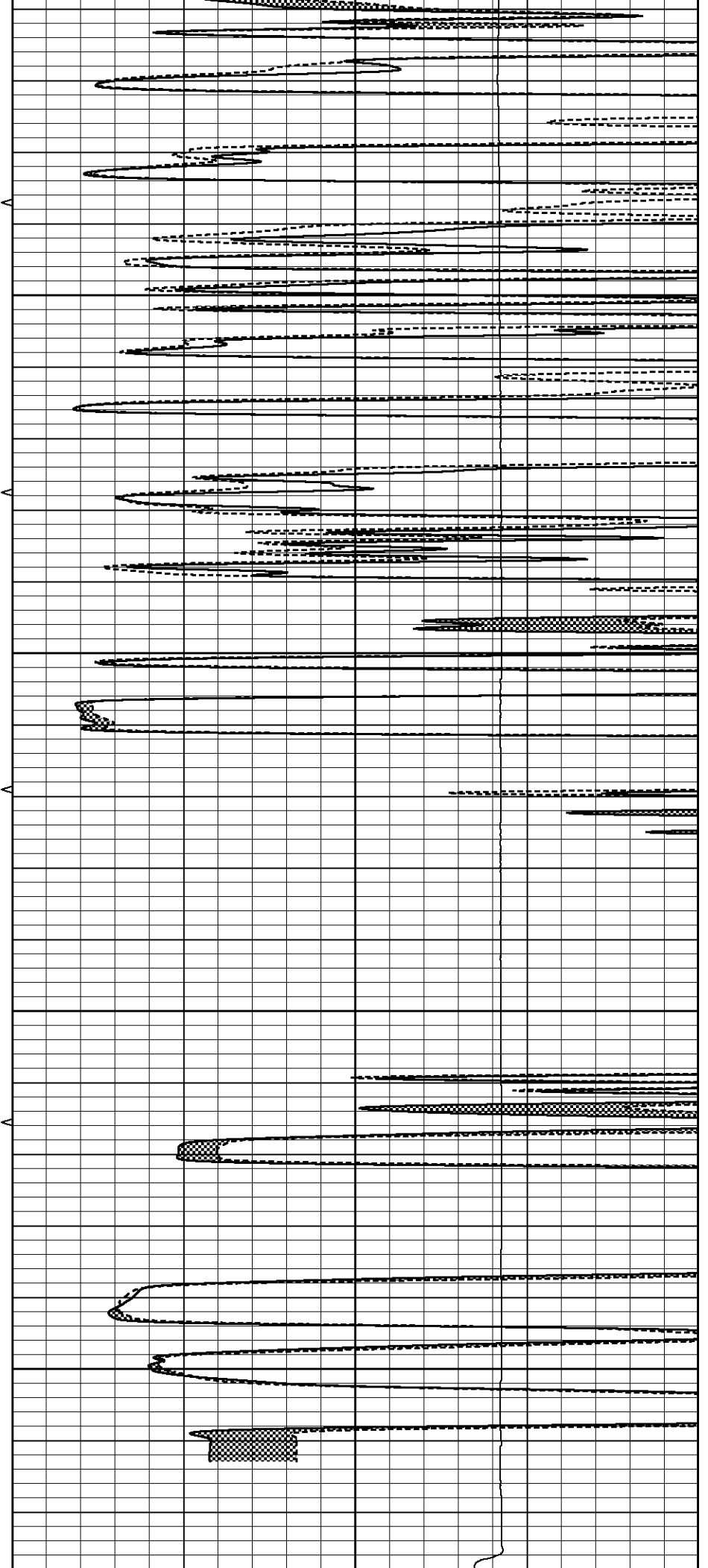


5100

5150

5200

5250



0	GAMMA RAY (GAPI)	150	ABHV	0	MEL1.5 (Ohm-m)	40
6	CALIPER (in)	16	10 (ft3)	0	MEL2.0 (Ohm-m)	40
0	MINMK	20	TBHV		0	LTEN (lb) 5000
			0 (ft3)	10		

Calibration Report

Database File 8334pe.db
Dataset Pathname pass9.1
Dataset Creation Sun Nov 05 19:34:57 2023

MICRO Calibration Report

Serial Number: 070910
Tool Model: ProbeN
Performed: Sun Nov 05 18:56:20 2023

Caliper Calibration: Gain=3.556 Offset=1.778

	Low Cal	High Cal
References	8.000	16.000
Readings	1.750	4.000

1.5" Calibration: Gain=54.000 Offset=0.000

	Low Cal	High Cal
References	0.000	20.000
Readings	0.000	1.216

2" Calibration: Gain=65.000 Offset=0.000

	Low Cal	High Cal
References	0.000	20.000
Readings	0.002	1.053

Gamma Ray Calibration Report

Serial Number: 070559
Tool Model: OPEN_GR
Performed: Sun Nov 05 18:49:55 2023

Calibrator Value: 1.0 GAPI

Background Reading: 0.0 cps
Calibrator Reading: 1.0 cps

Sensitivity: 0.3000 GAPI/cps