

SONIC LOG



Company VINCENT OIL CORPORATION
Well C&D HERRMANN #1-5
Field WILDFIRE
County FORD **State** KANSAS

Location: API #: 15-057-21098-0000
 2300' FNL & 444' FWL
 NE - SW - SW - NW
 SEC 5 TWP 29S RGE 23W
Permanent Datum GROUND LEVEL **Elevation** 2482
Log Measured From KELLY BUSHING 12' A.G.L.
Drilling Measured From KELLY BUSHING

Other Services
 CDL/CNL/PE
 DIL/MEL
Elevation
 K.B. 2494
 D.F. 2492
 G.L. 2482

Date	11/5/23
Run Number	TWO
Depth Driller	5274
Depth Logger	5276
Bottom Logged Interval	5268
Top Log Interval	500
Casing Driller	8.625@583
Casing Logger	578
Bit Size	7.785
Type Fluid in Hole	CHEMICAL MUD
Density / Viscosity	9.3/53
pH / Fluid Loss	11.0/8.4
Source of Sample	FLOWLINE
Rm @ Meas. Temp	.700@78F
Rmf @ Meas. Temp	.525@78F
Rmc @ Meas. Temp	.840@78F
Source of Rmf / Rmc	MEASUREMENT
Rm @ BHT	.430@127F
Time Circulation Stopped	4.5 HOURS
Time Logger on Bottom	6:00 P.M.
Maximum Recorded Temperature	127F
Equipment Number	922339
Location	HAYS, KANSAS
Recorded By	JEFF LUEBBERS
Witnessed By	TOM DUDGEON
	JEREMY PASEK

<<< Fold Here >>>

All interpretations are opinions based on inferences from electrical or other measurements and we cannot and do not guarantee the accuracy or correctness of any interpretation, and we shall not, except in the case of gross or willful negligence on our part, be liable or responsible for any loss, costs, damages, or expenses incurred or sustained by anyone resulting from any interpretation made by any of our officers, agents or employees. These interpretations are also subject to our general terms and conditions set out in our current Price Schedule.

15-057-21098-0000 Comments

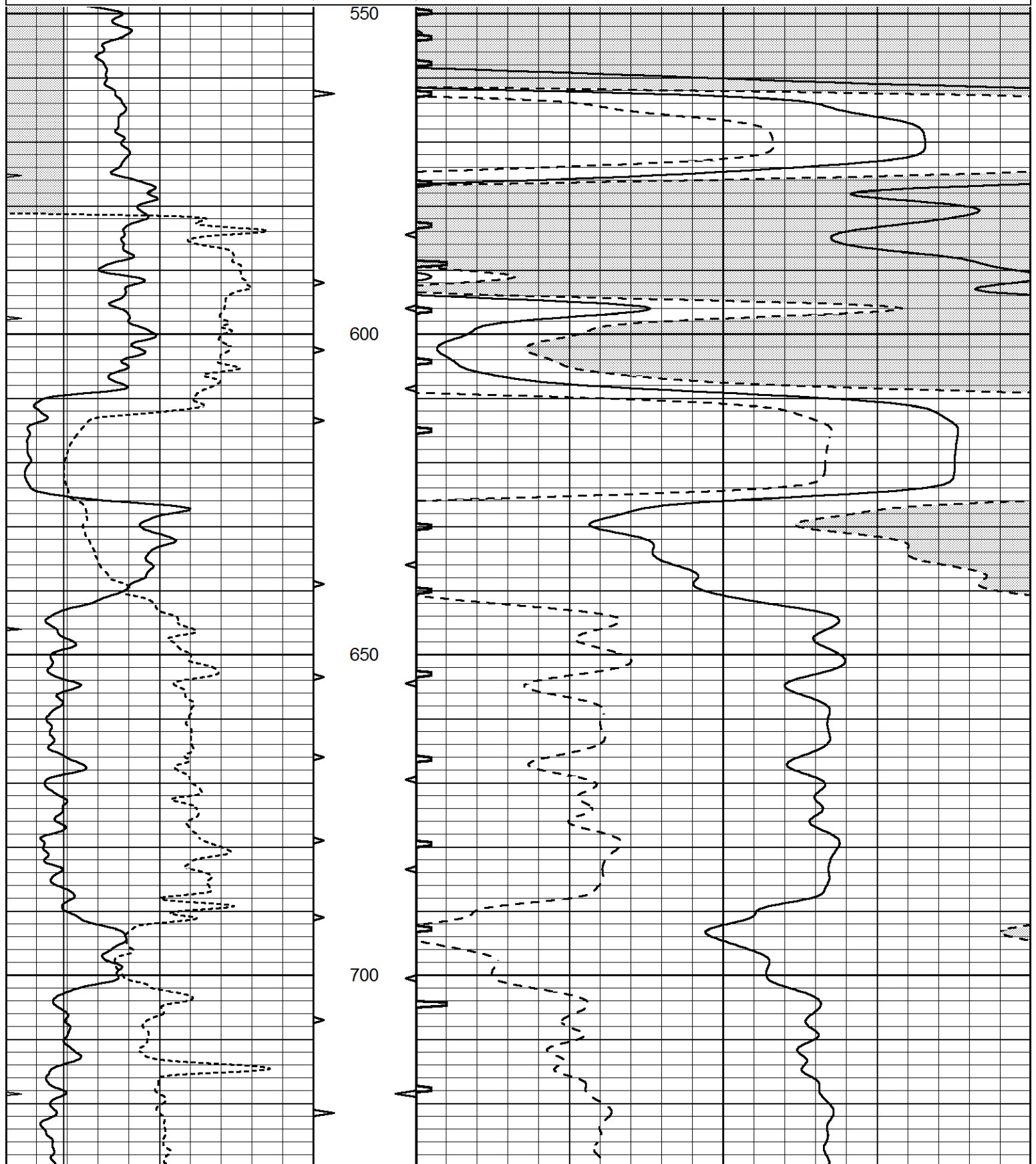
THANK YOU FOR USING ELI WIRELINE HAYS. KANSAS (785) 628-6395
 DIRECTIONS
 KINGSDOWN, KS. 2N ON "RD 125" TO WILBURN RD, 5W. TO "RD. 120", 1S., 1W. TO MAILBOX, N.
 INTO PAST FARMSTEAD

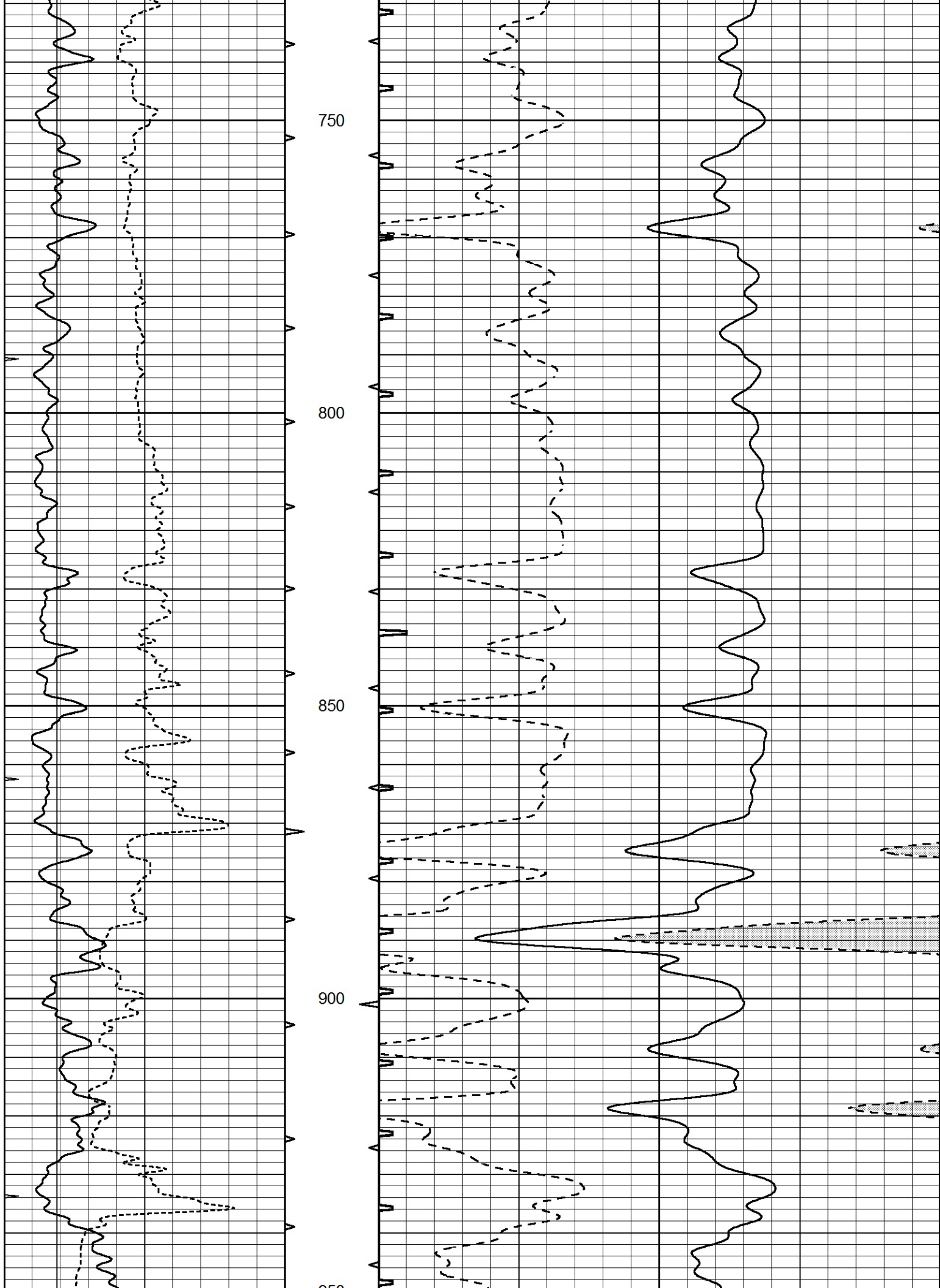


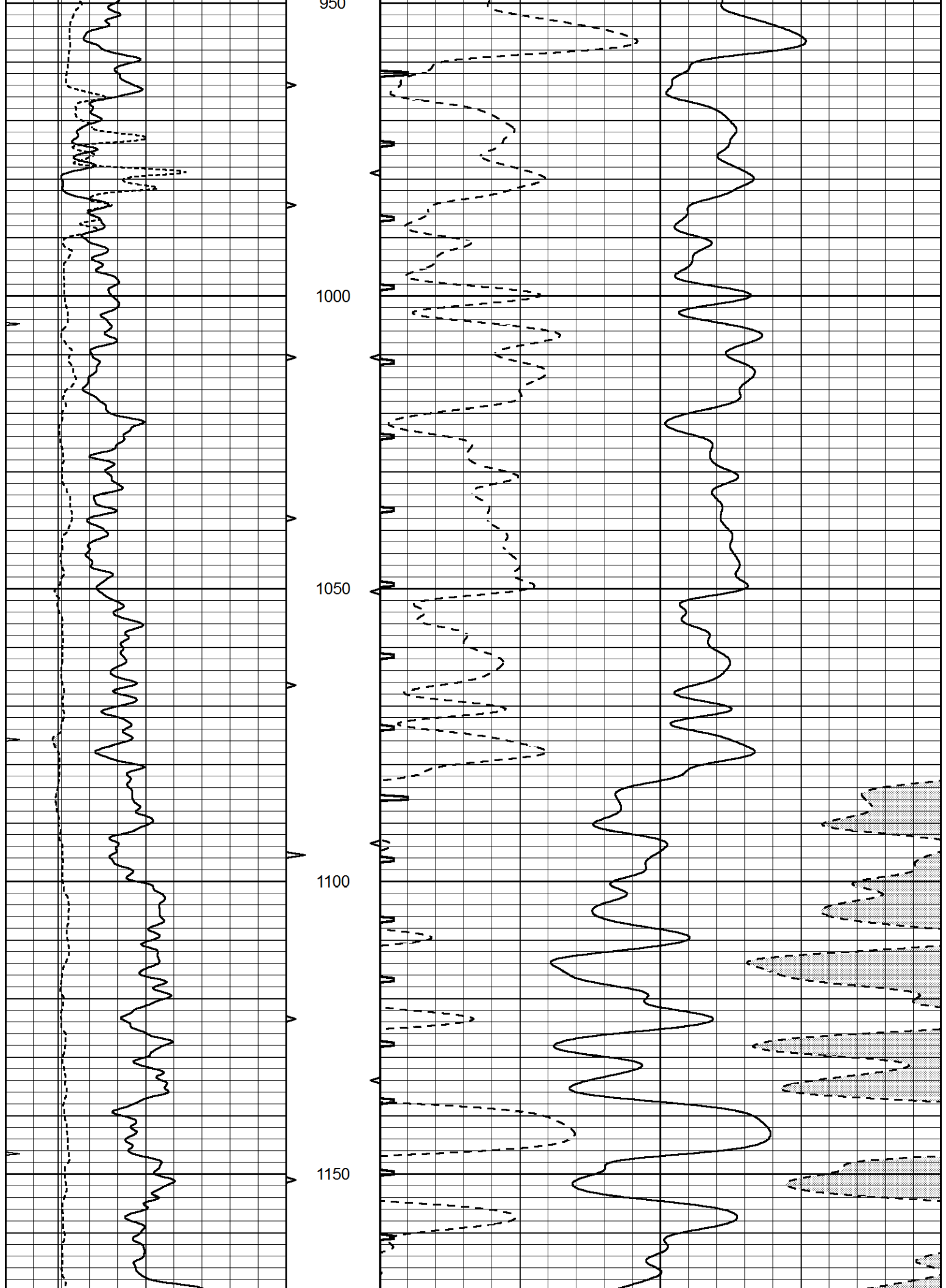
MAIN SECTION

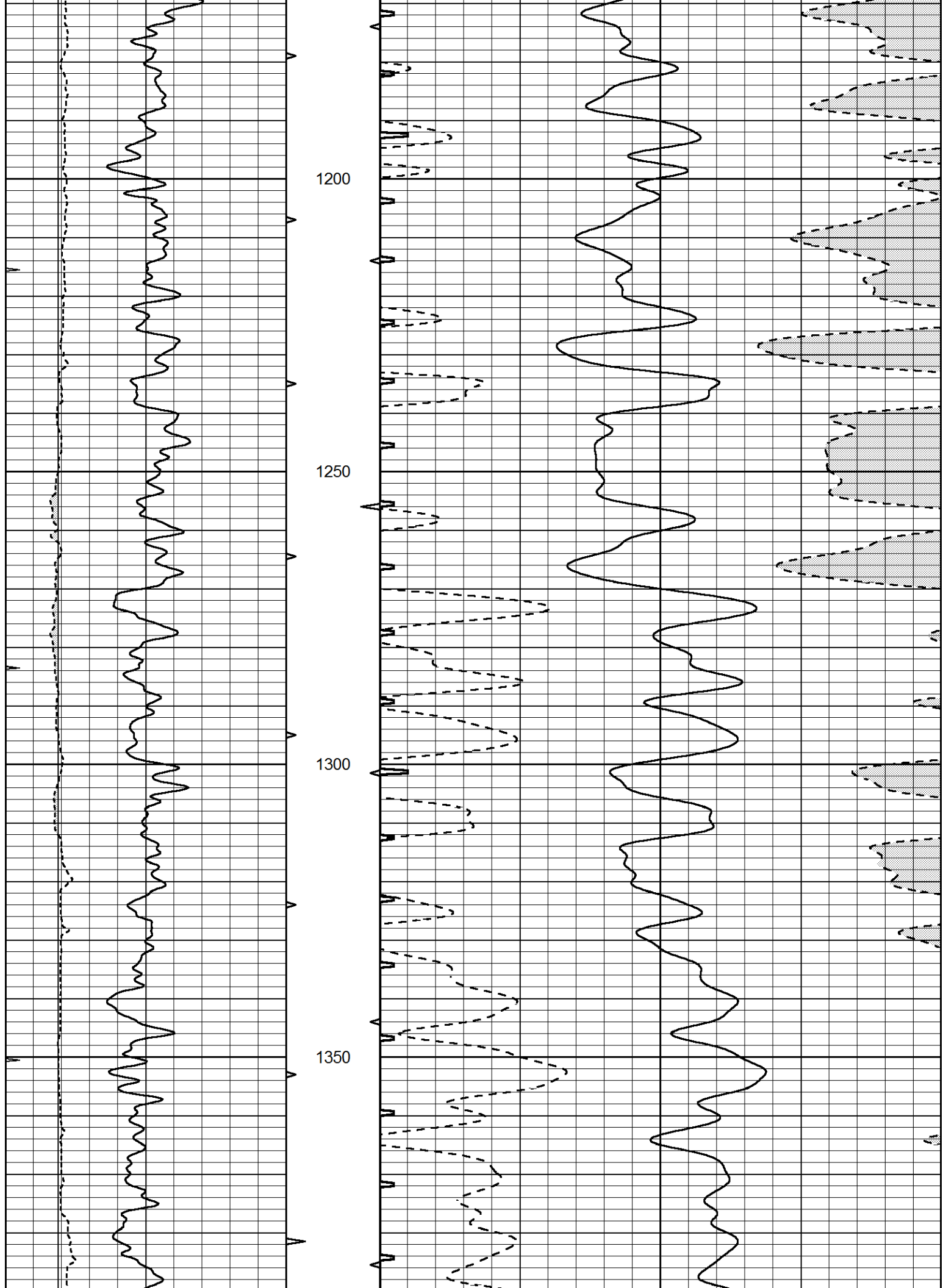
Database File 8334pe.db
 Dataset Pathname pass9.3
 Presentation Format slt
 Dataset Creation Sun Nov 05 20:28:42 2023
 Charted by Depth in Feet scaled 1:240

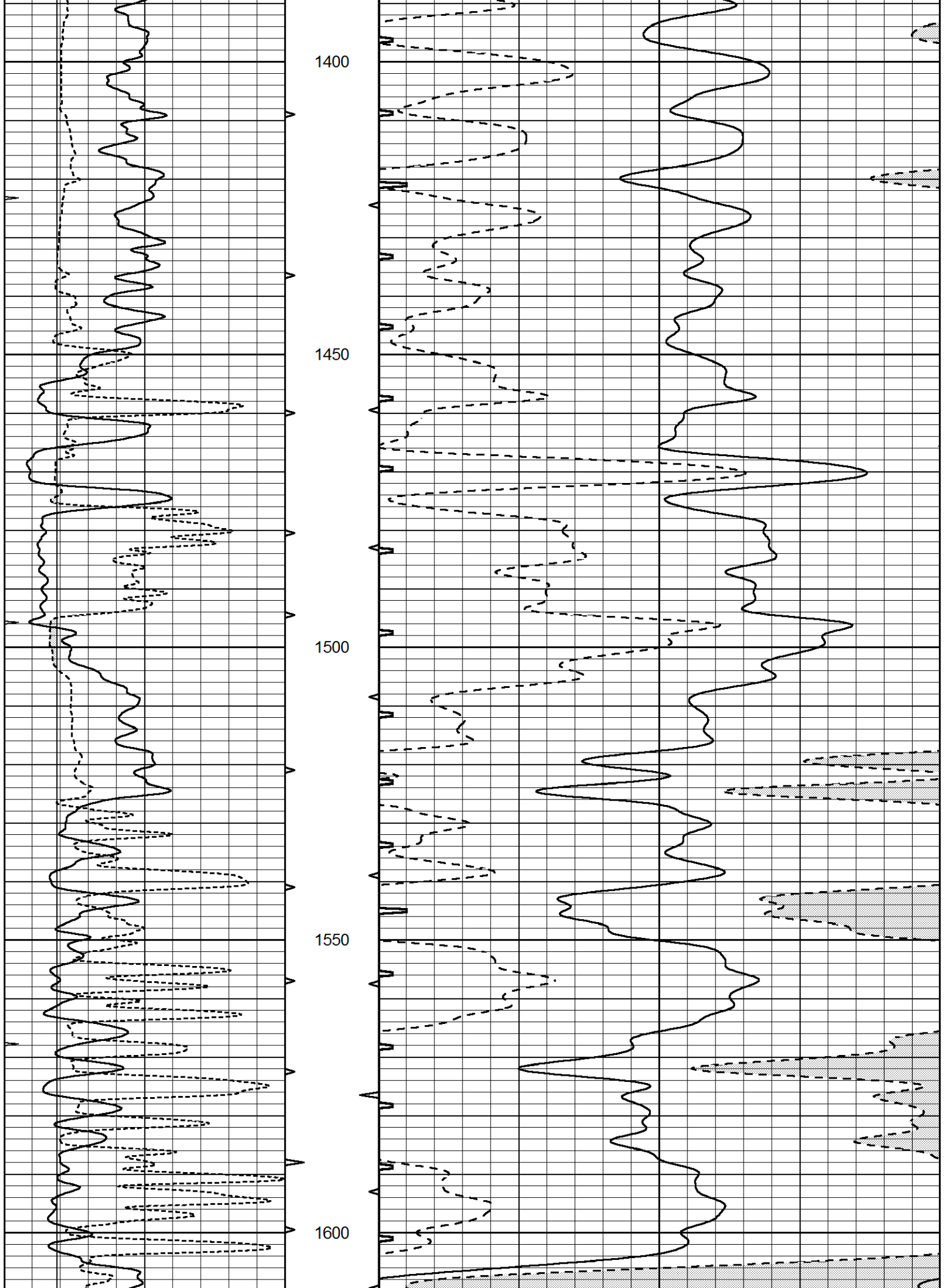
0	GAMMA RAY (GAPI)	150	ABHV	140	DELTA TIME (usec/ft)	40
6	CALIPER (in)	16	10 (ft3)	0	SONIC POROSITY (pu)	-10
0	MINMK	20	TBHV	0	ITT (msec)	20
			0 (ft3)	10		

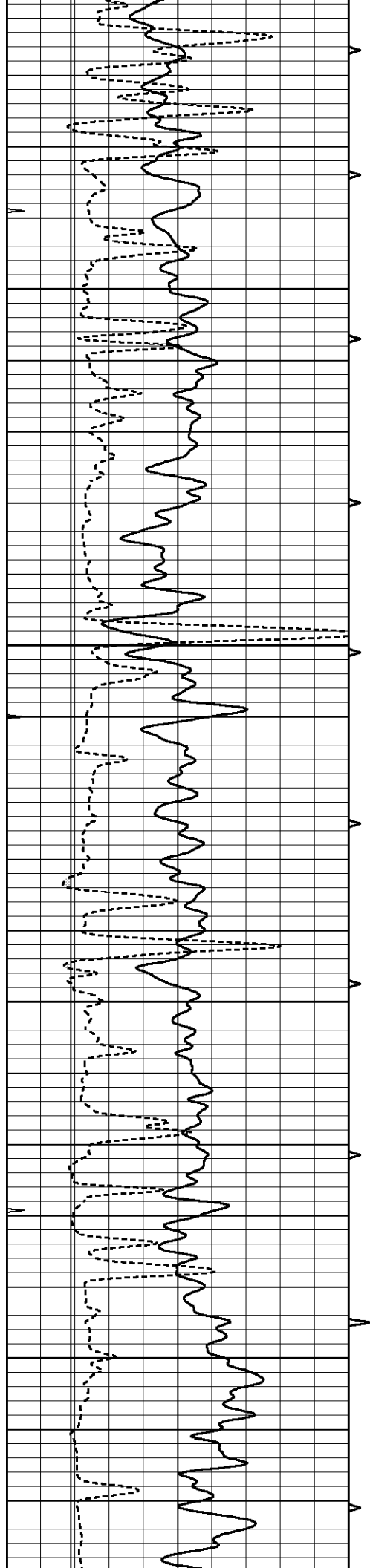










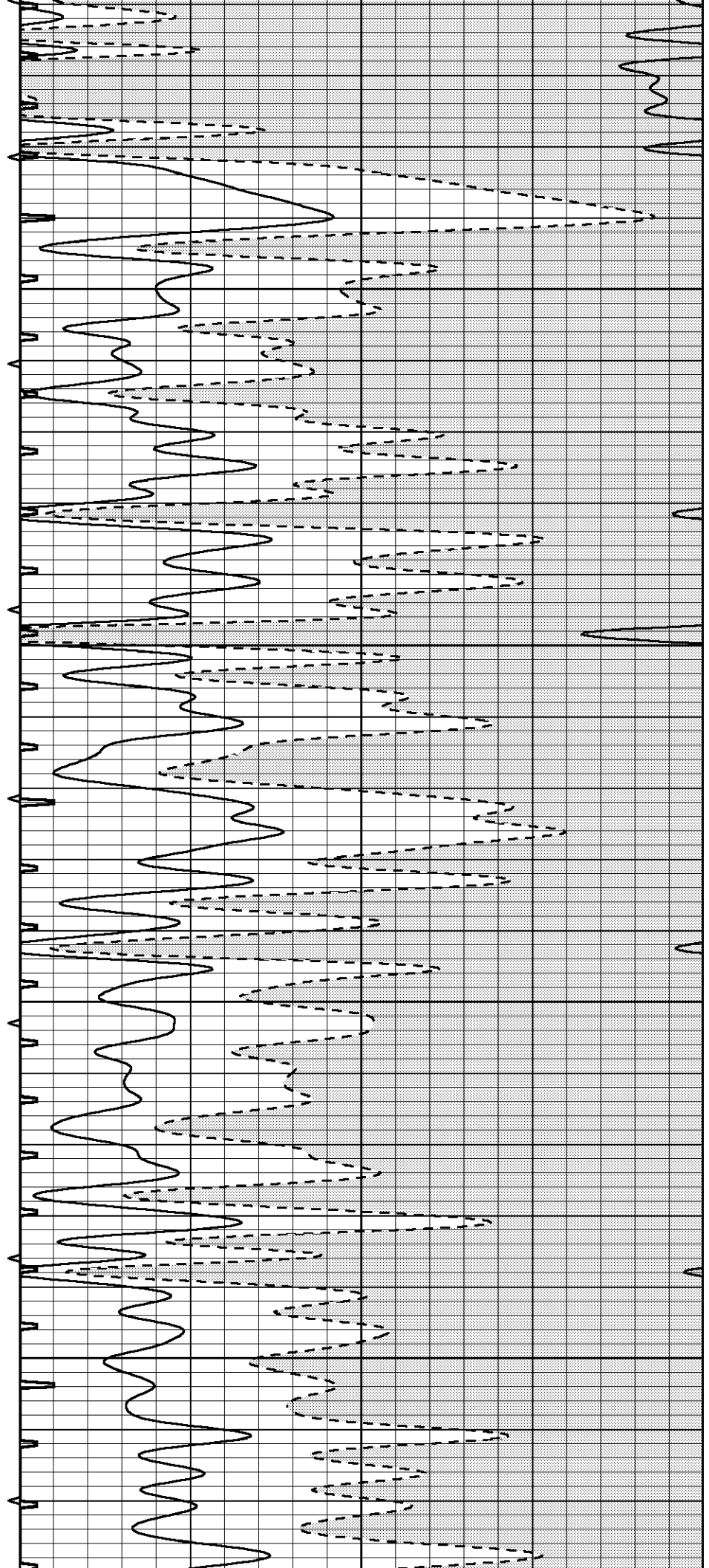


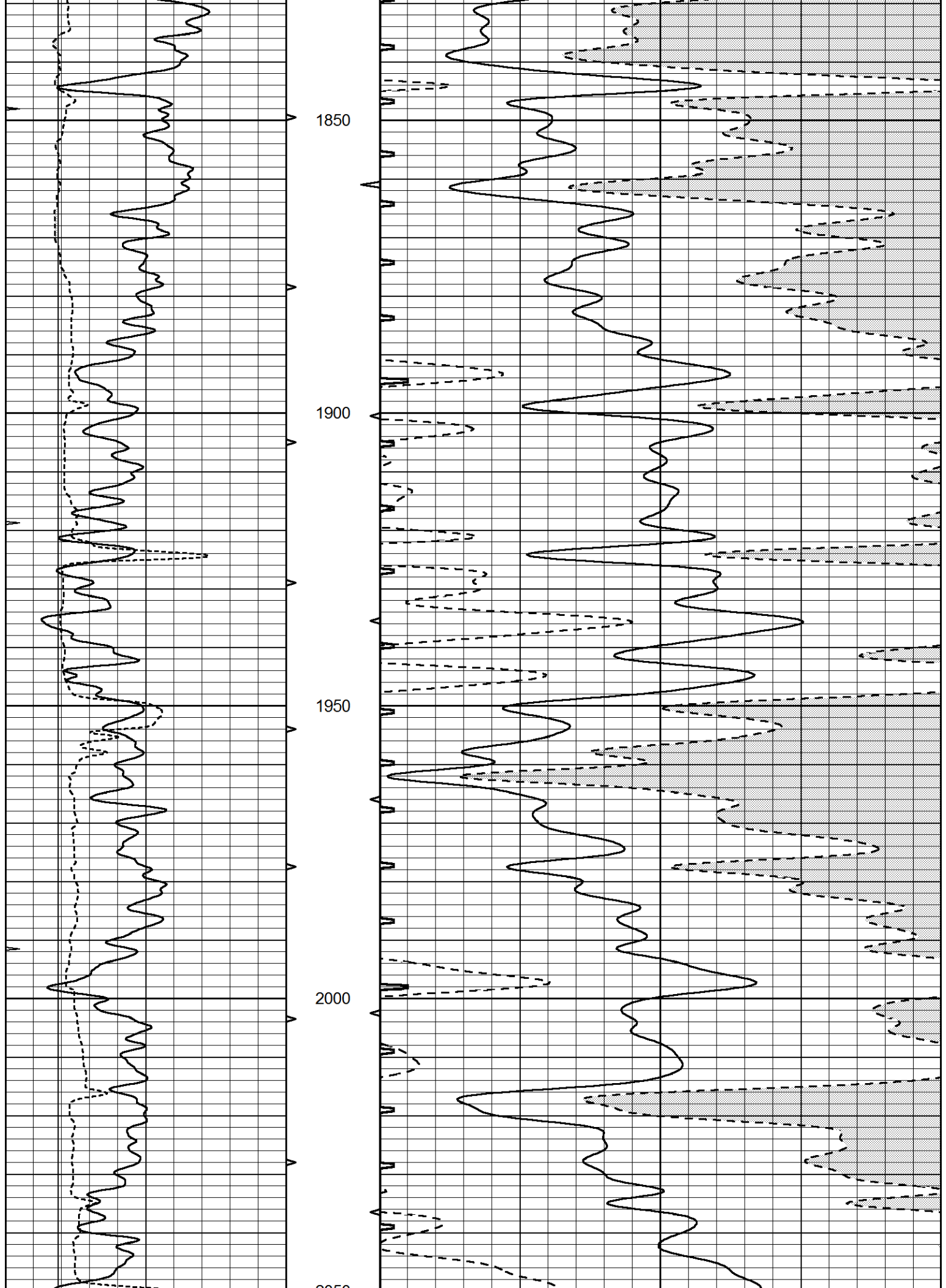
1650

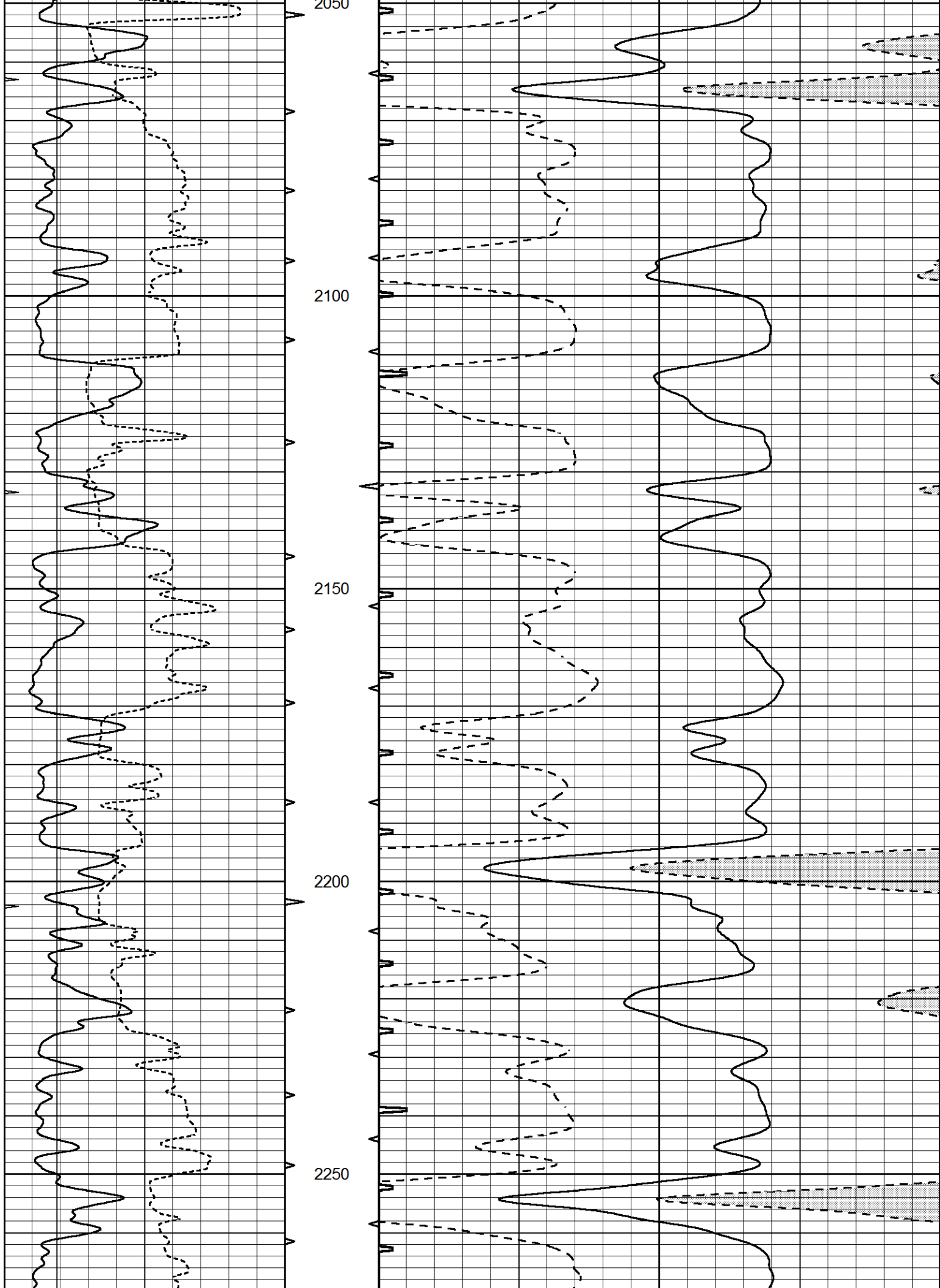
1700

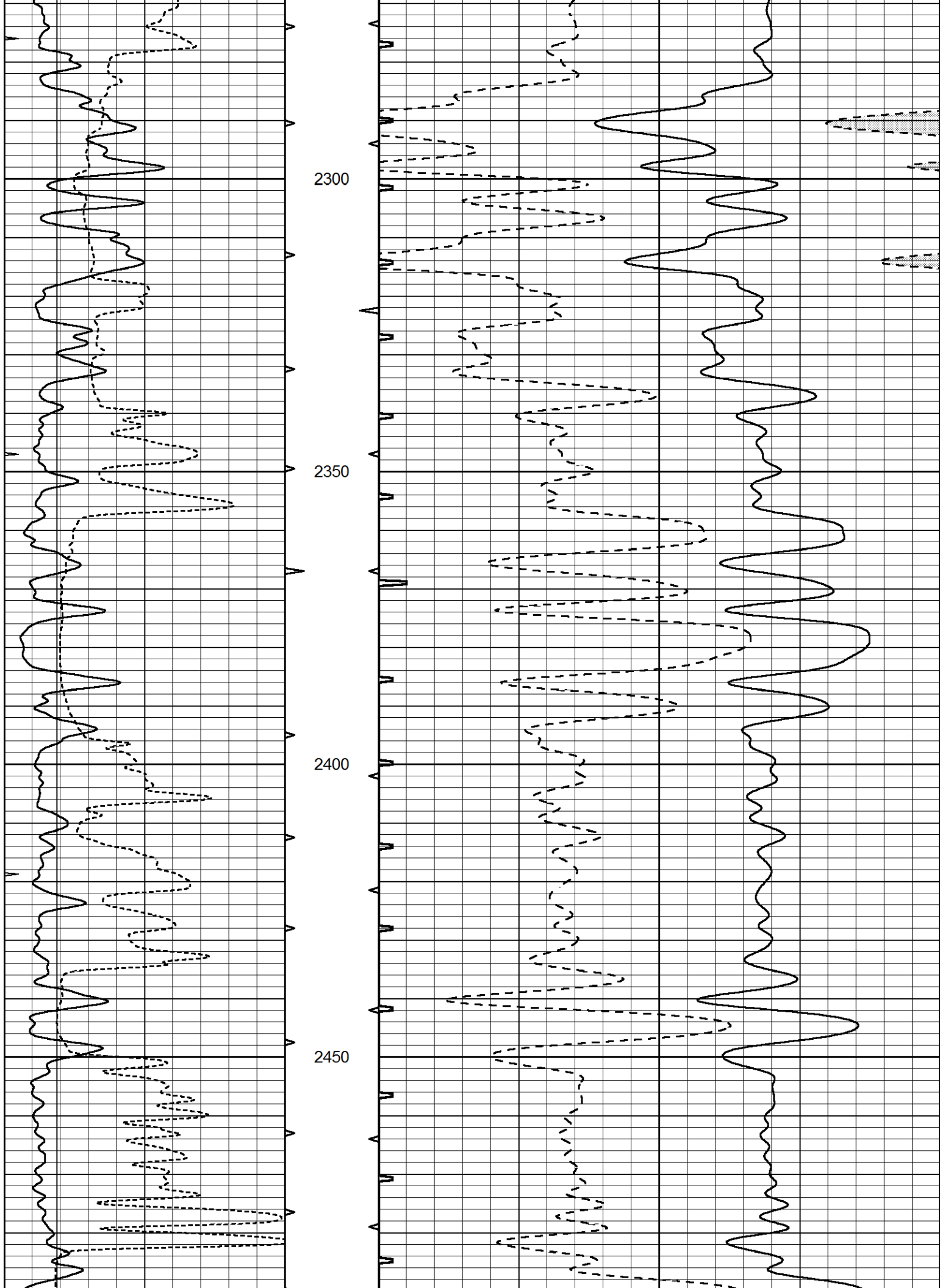
1750

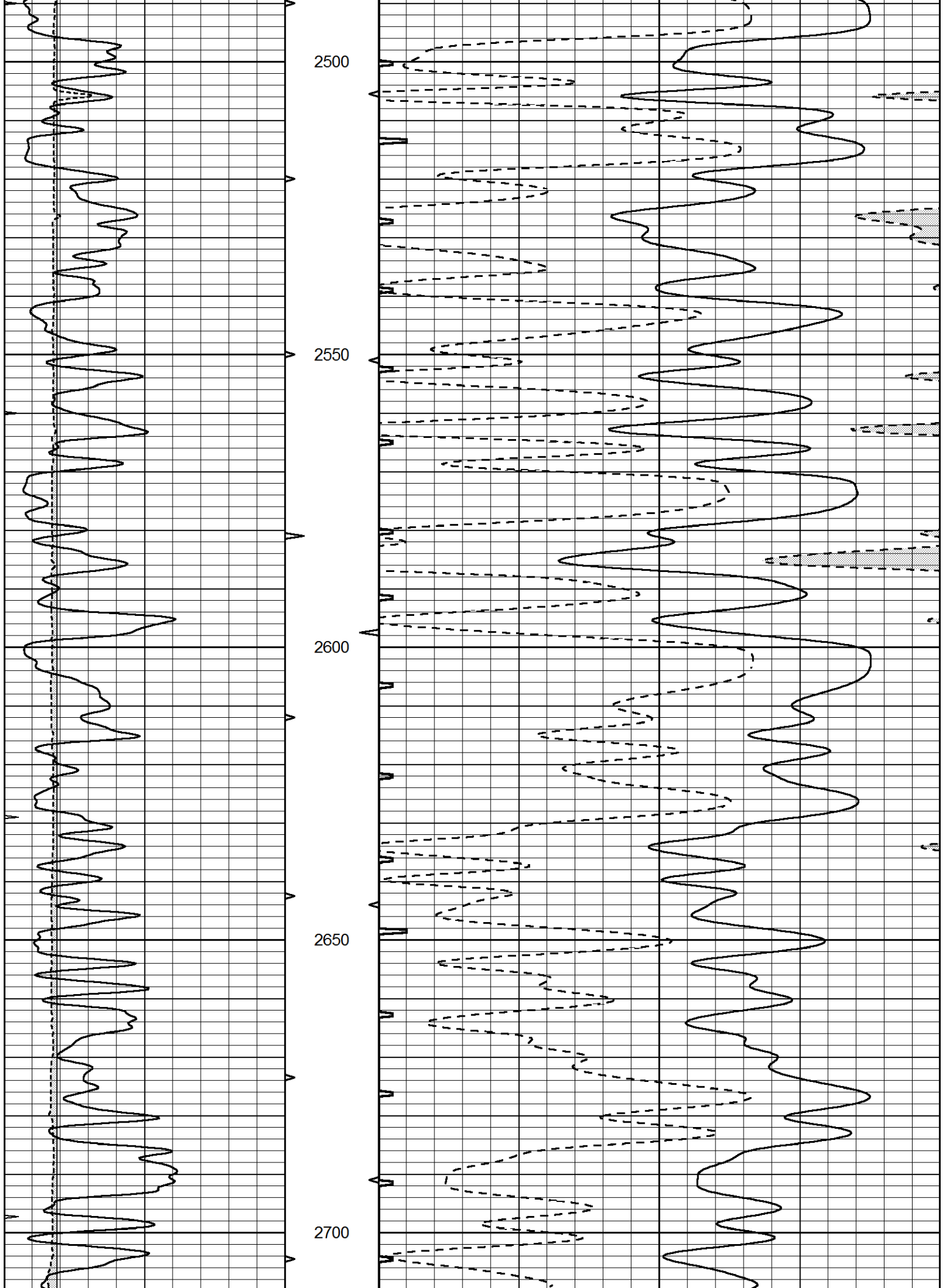
1800

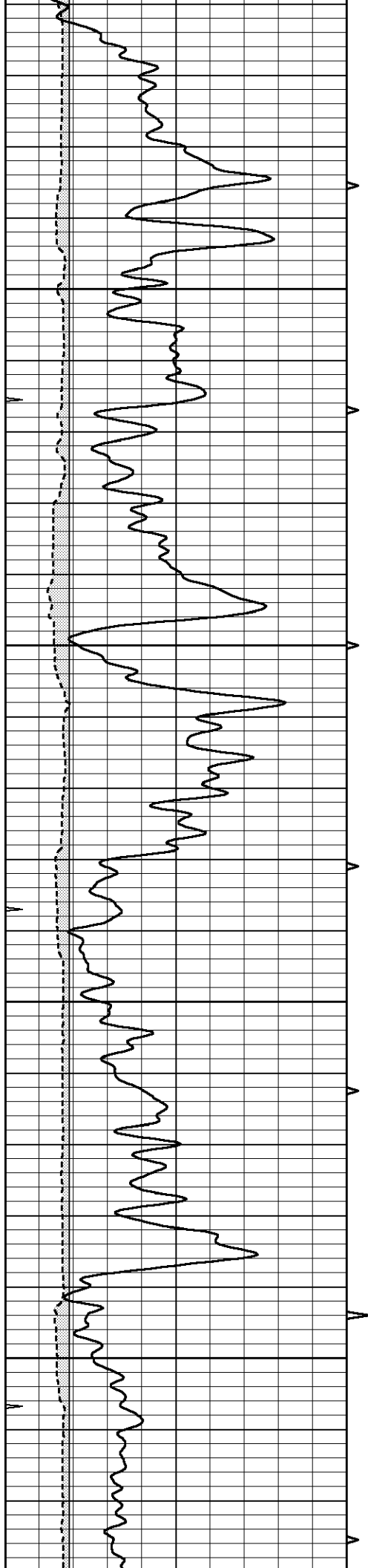










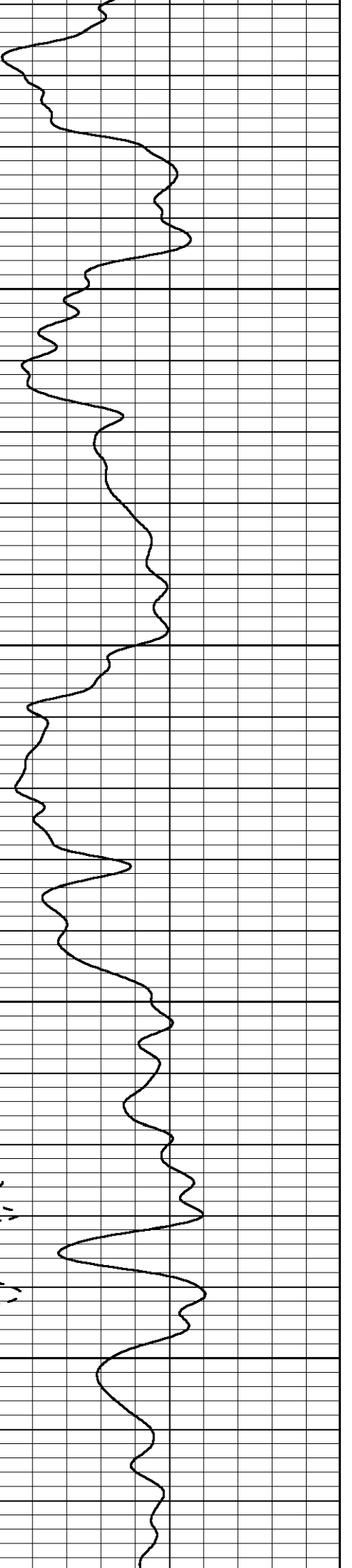
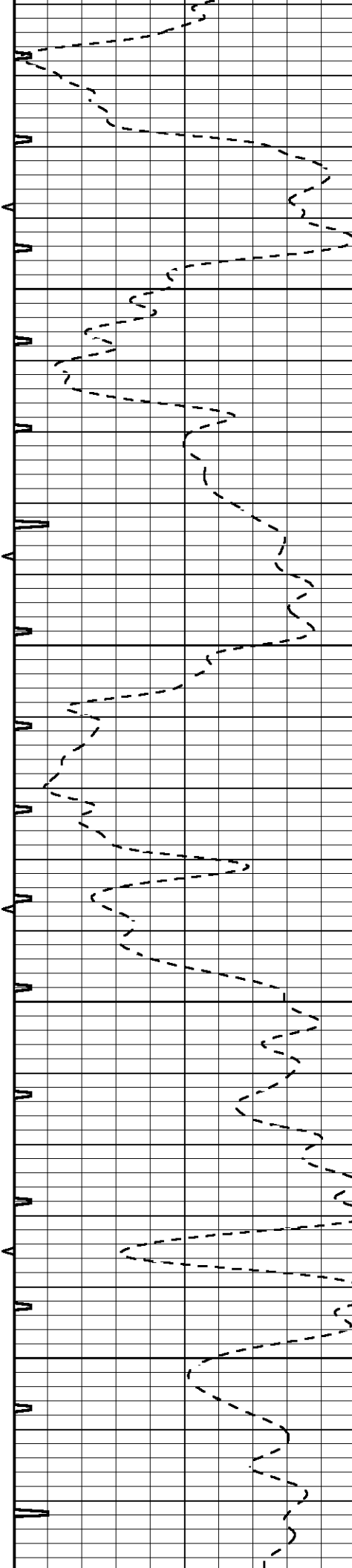


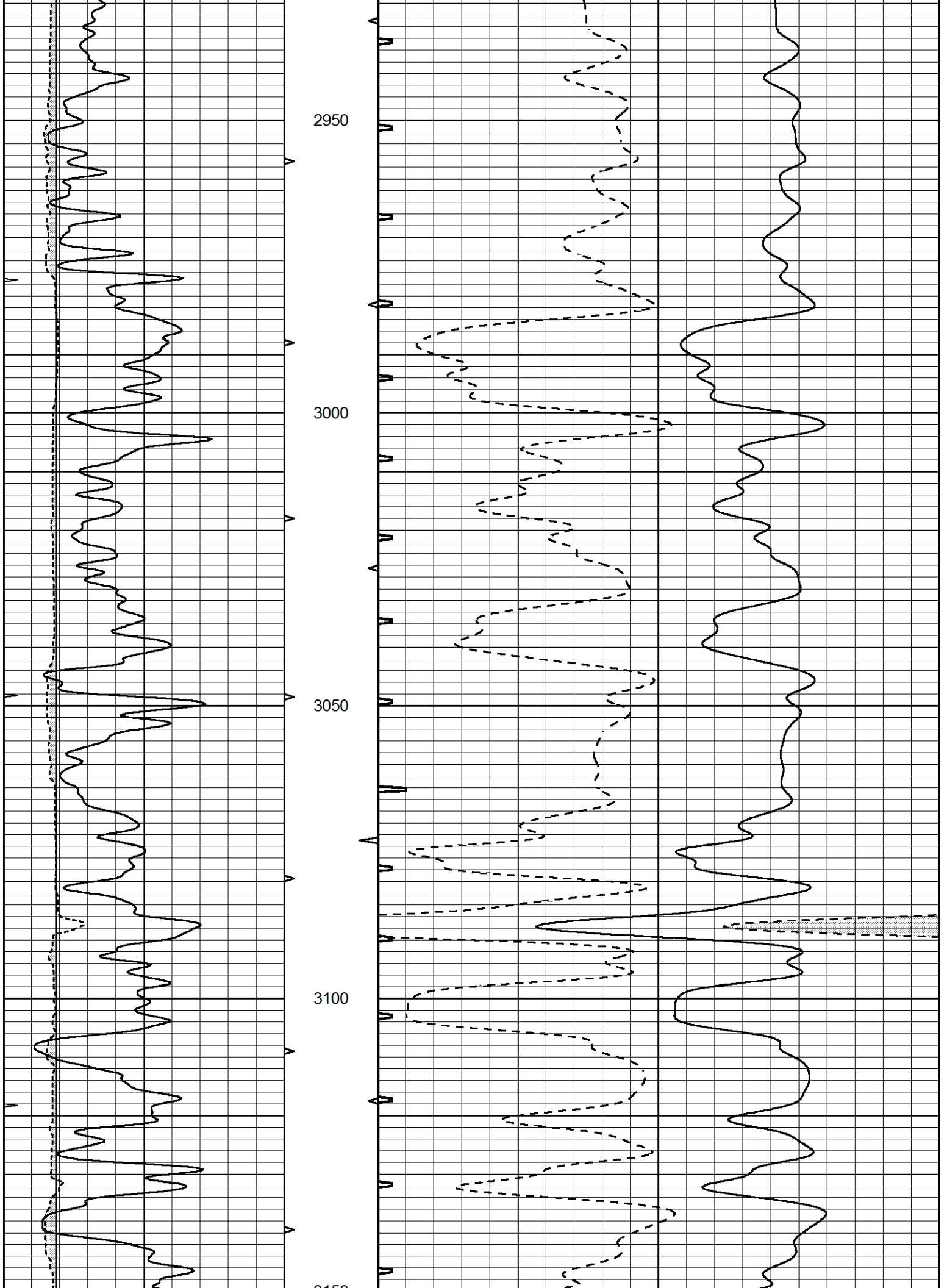
2750

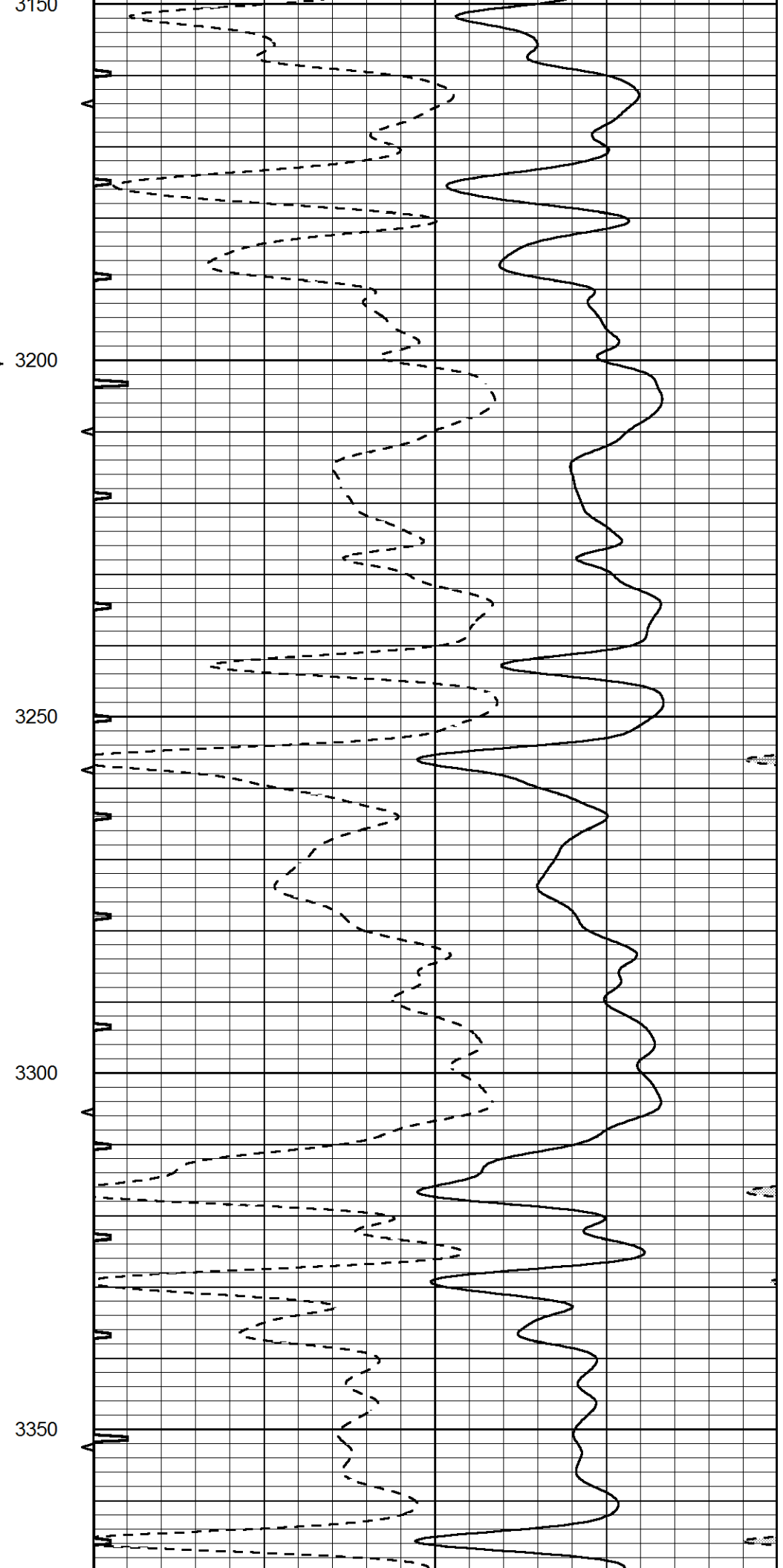
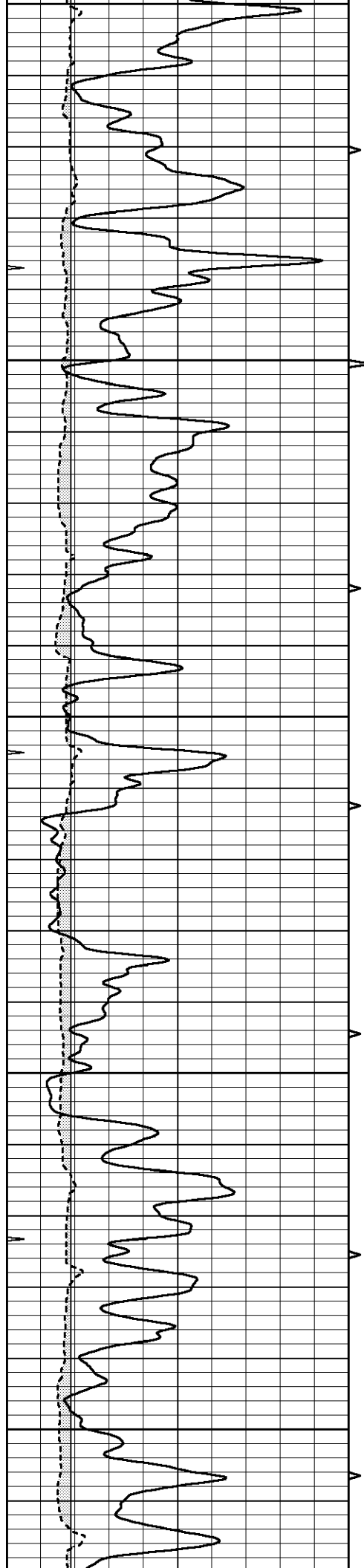
2800

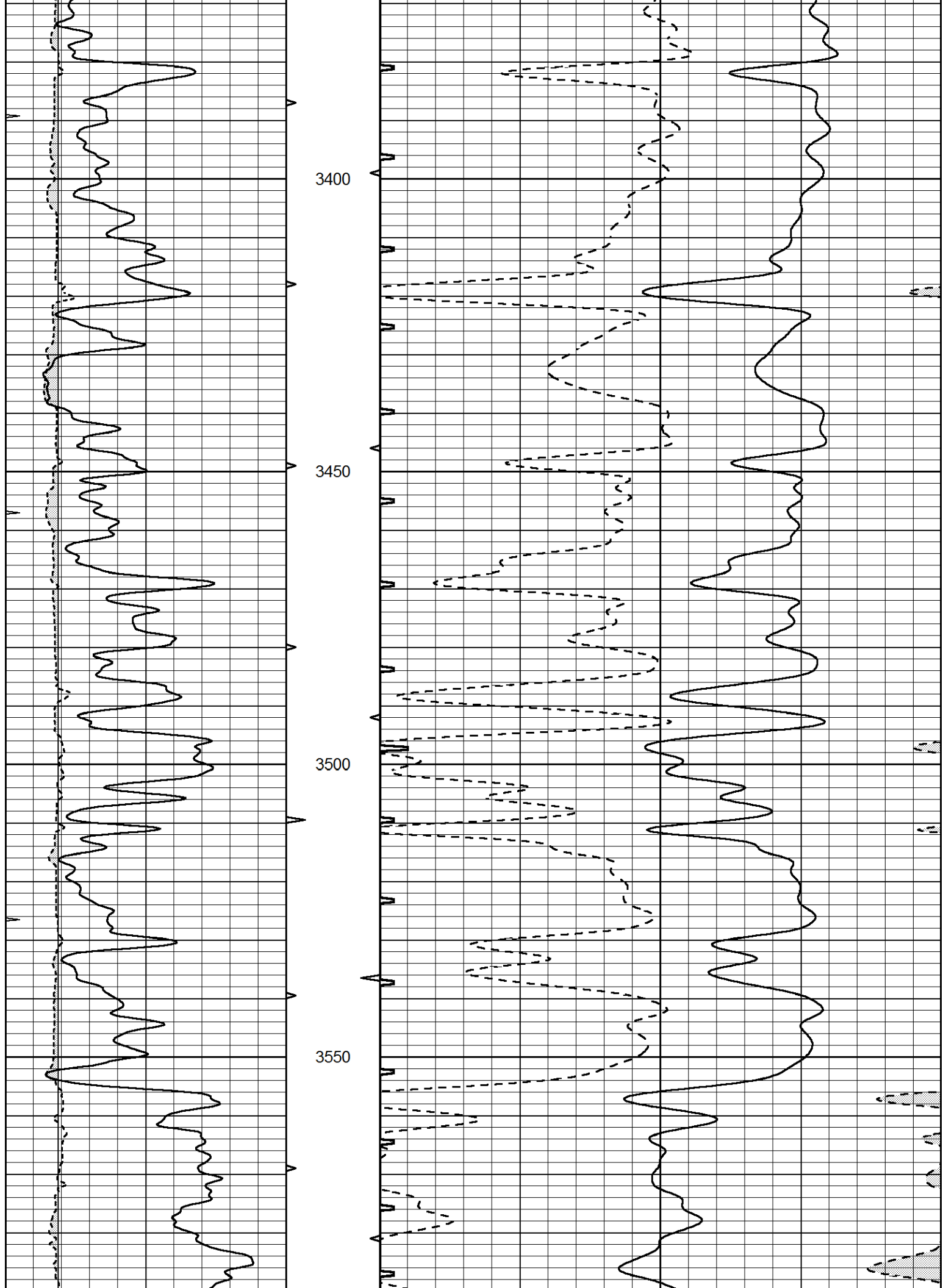
2850

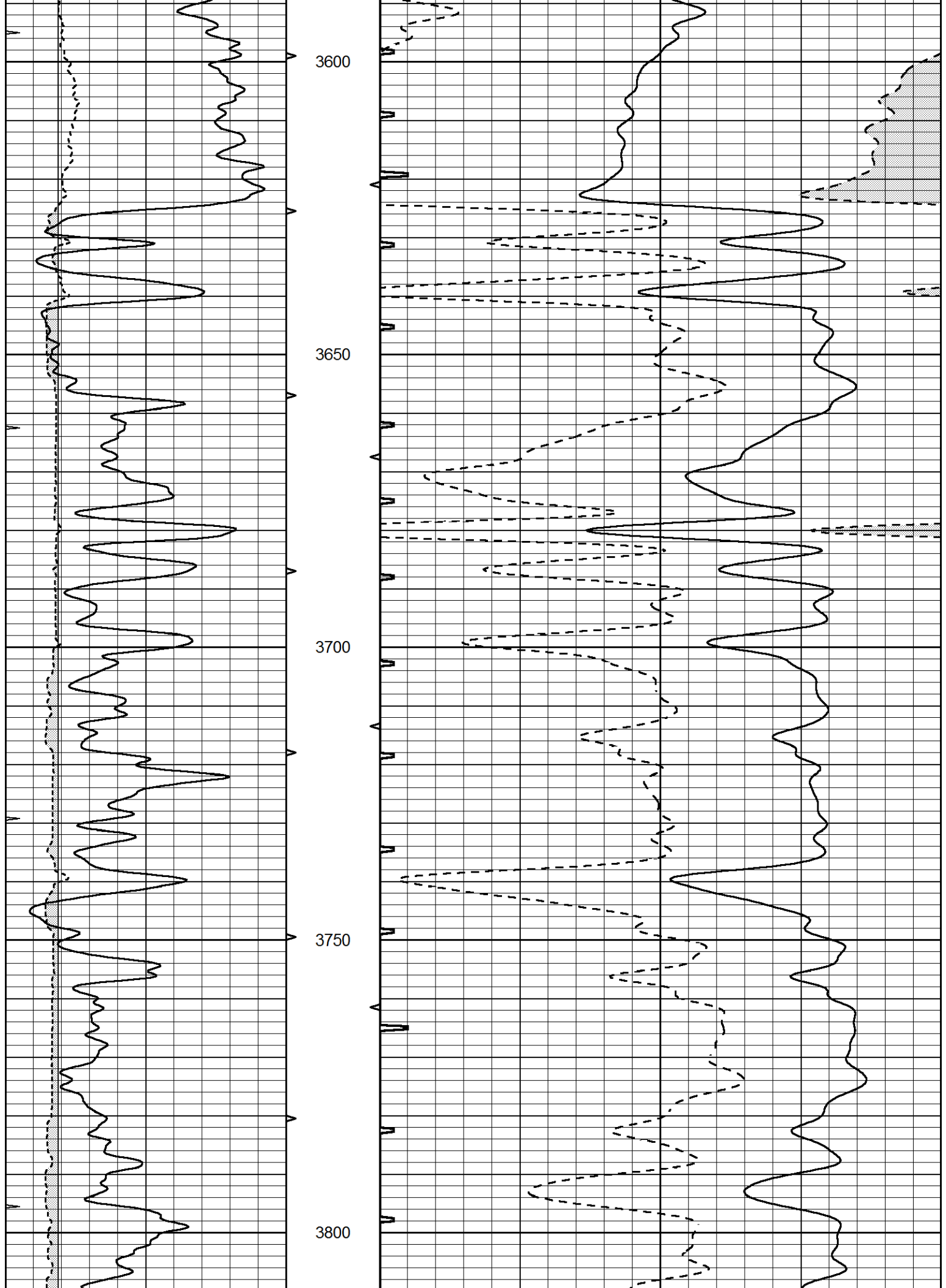
2900

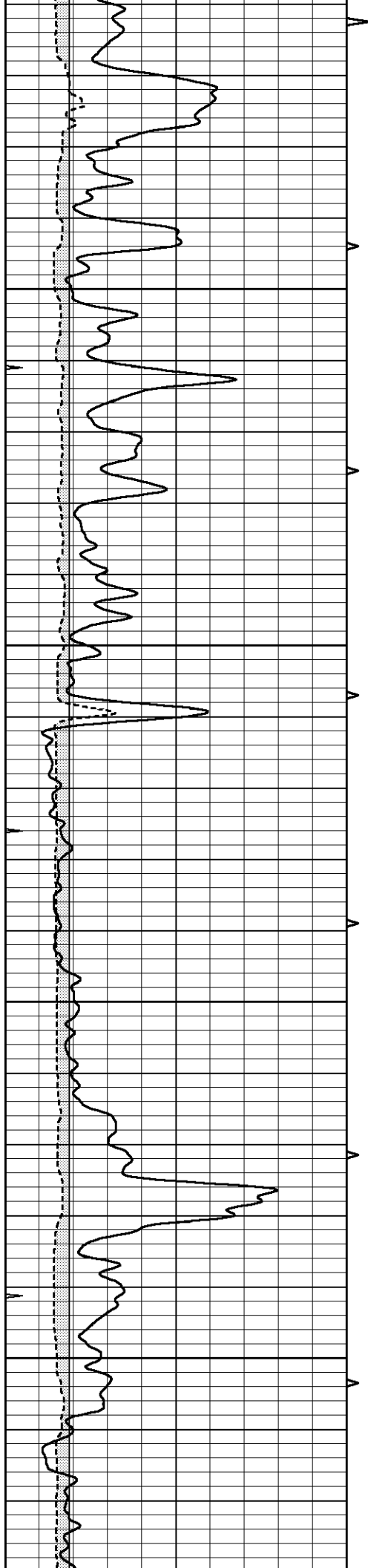










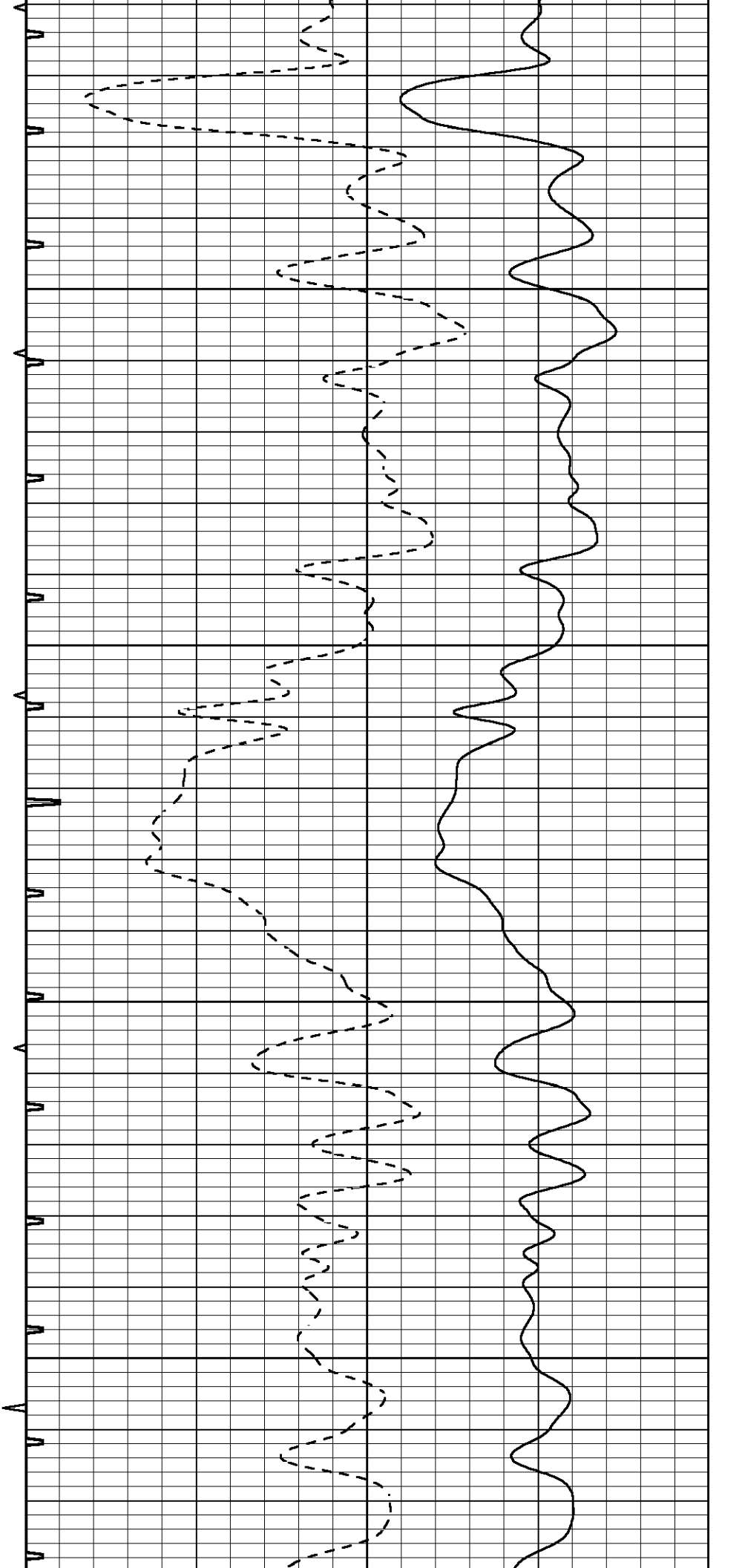


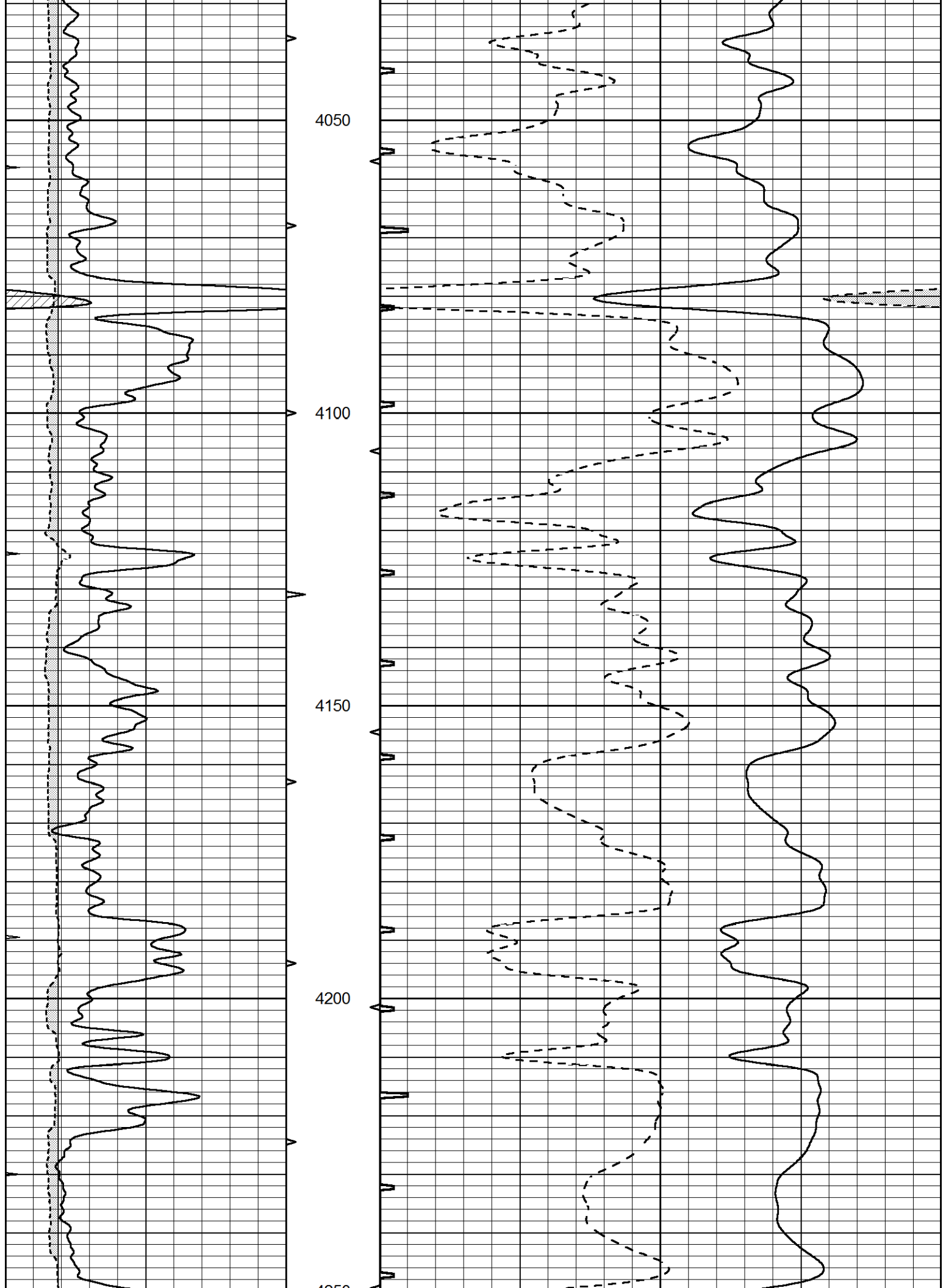
3850

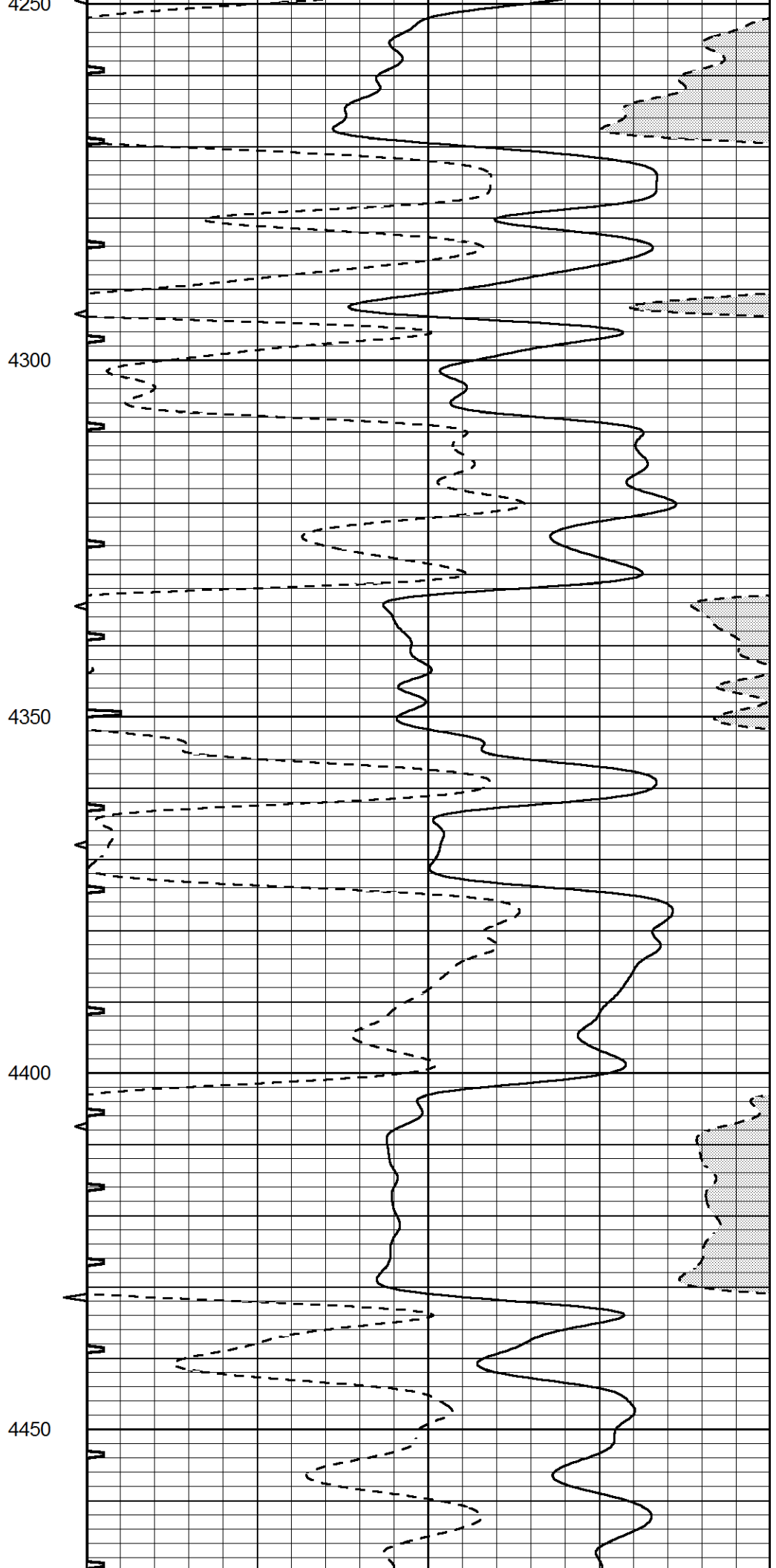
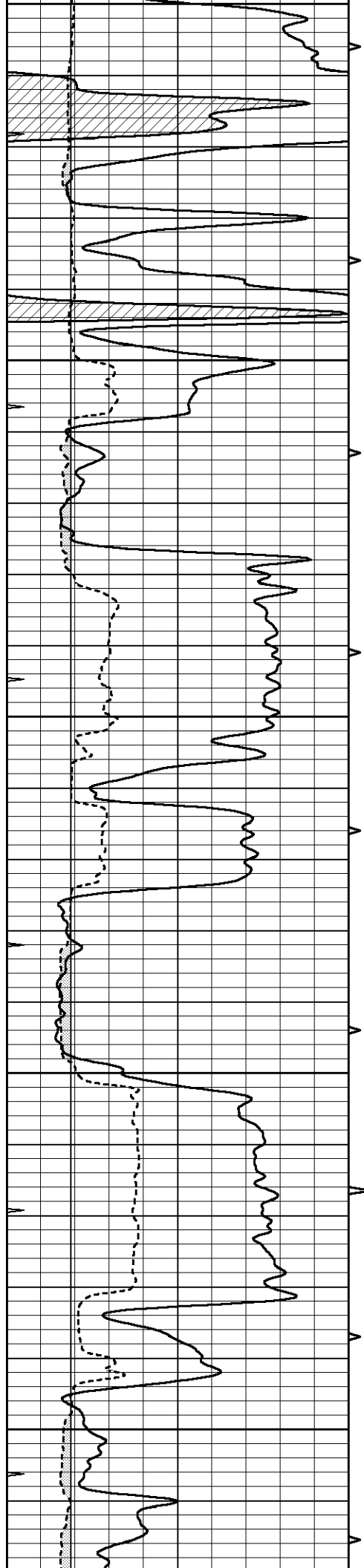
3900

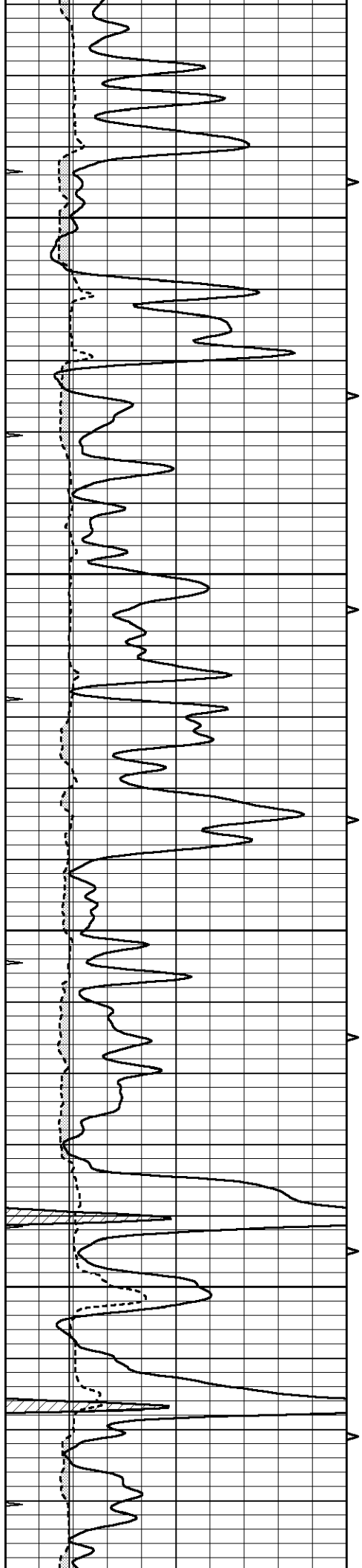
3950

4000







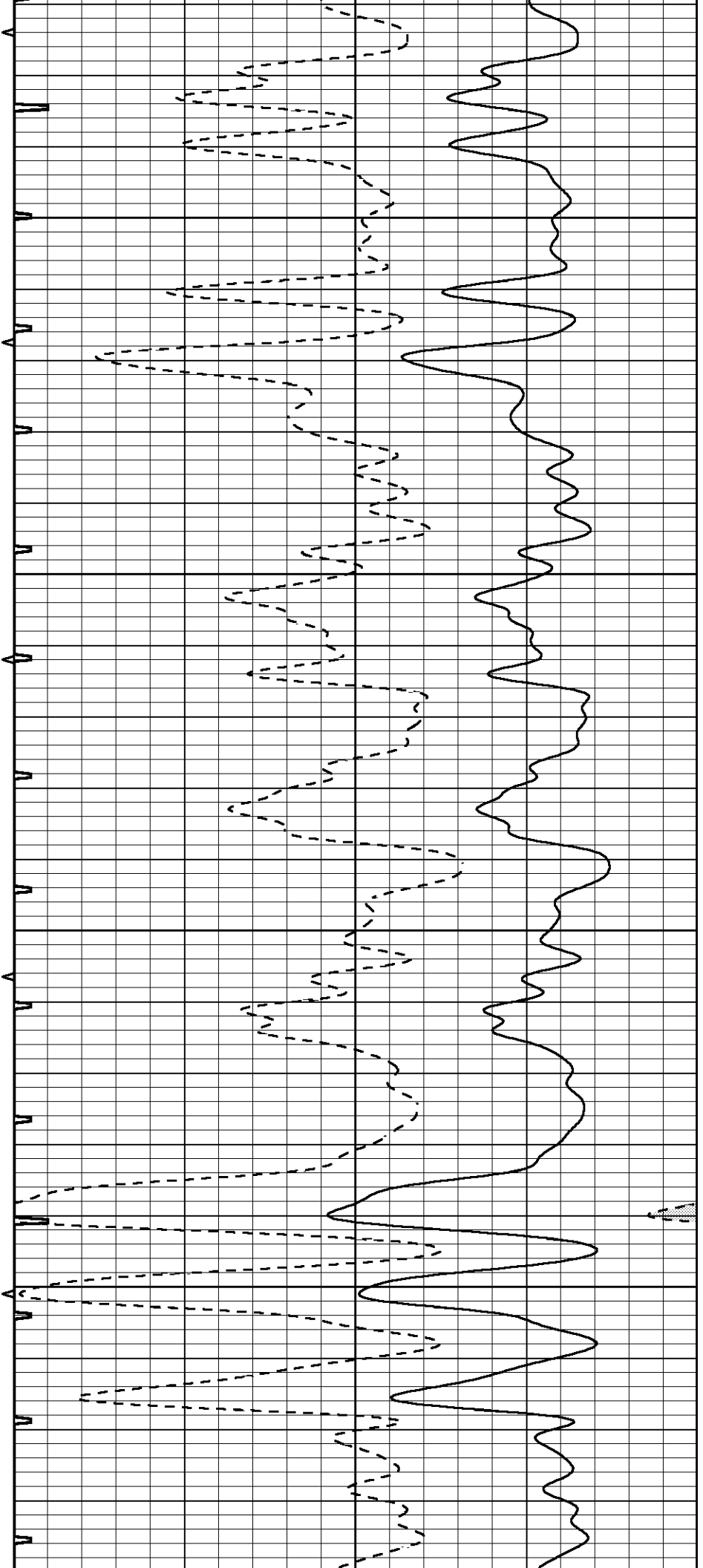


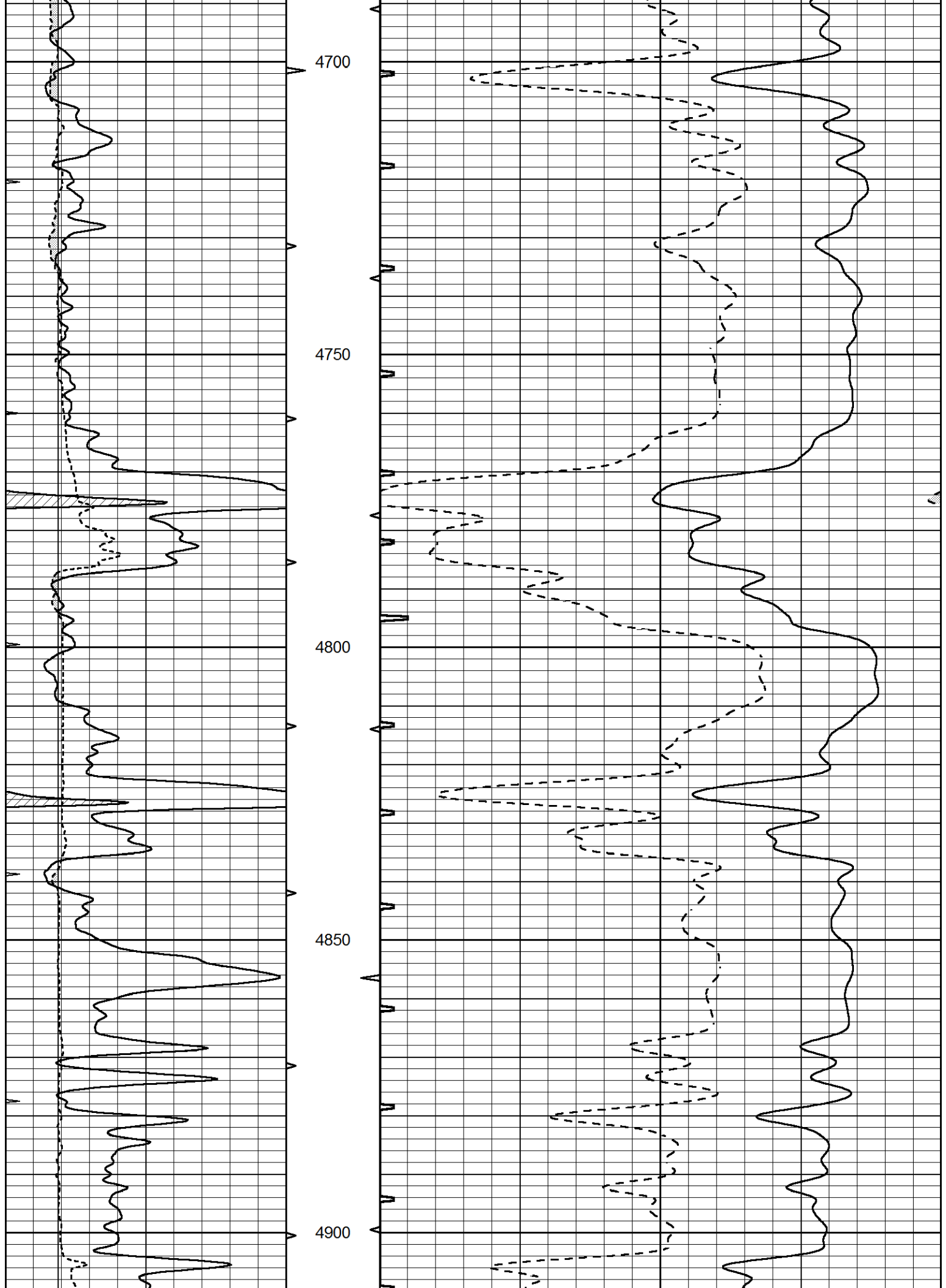
4500

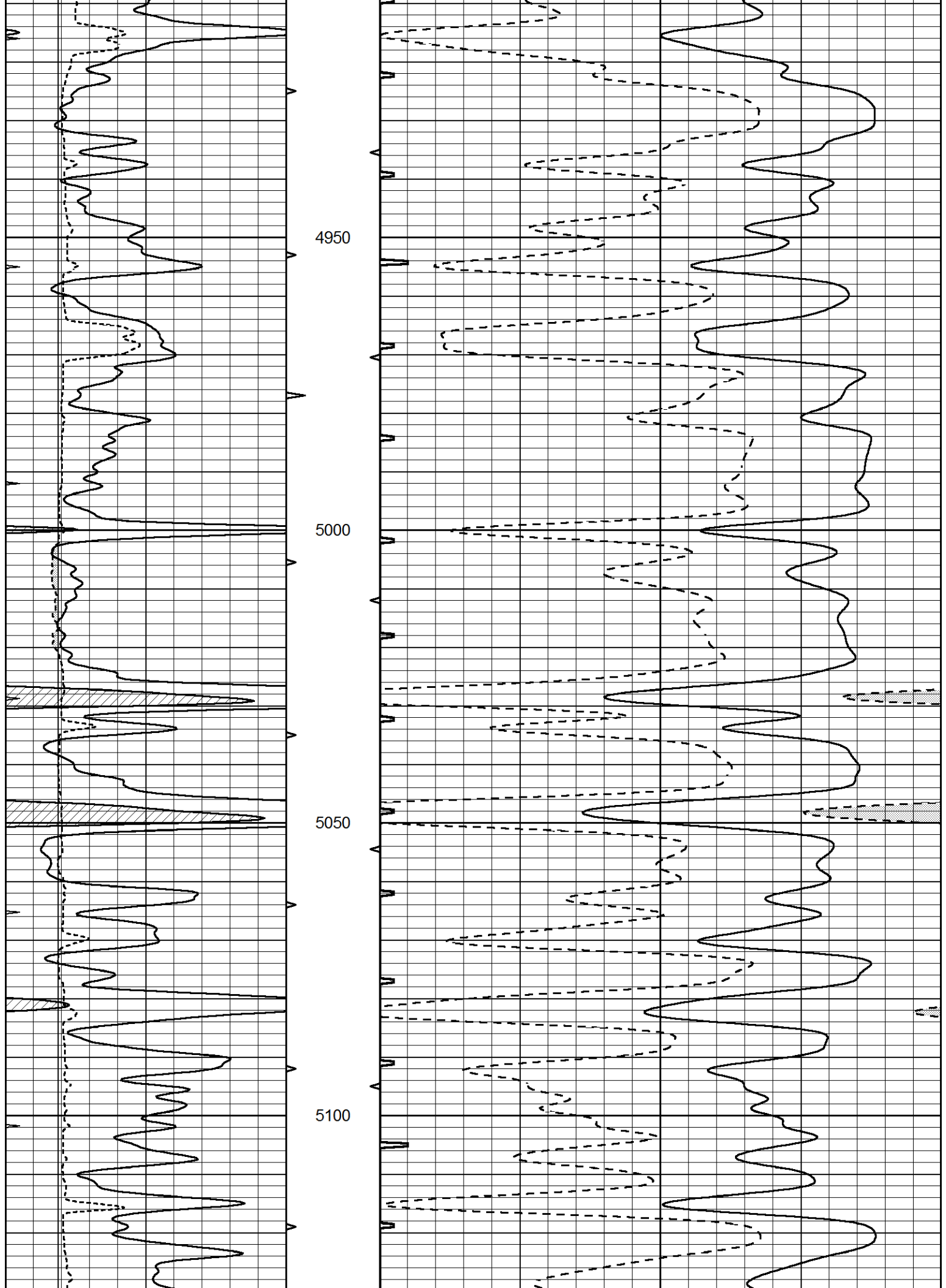
4550

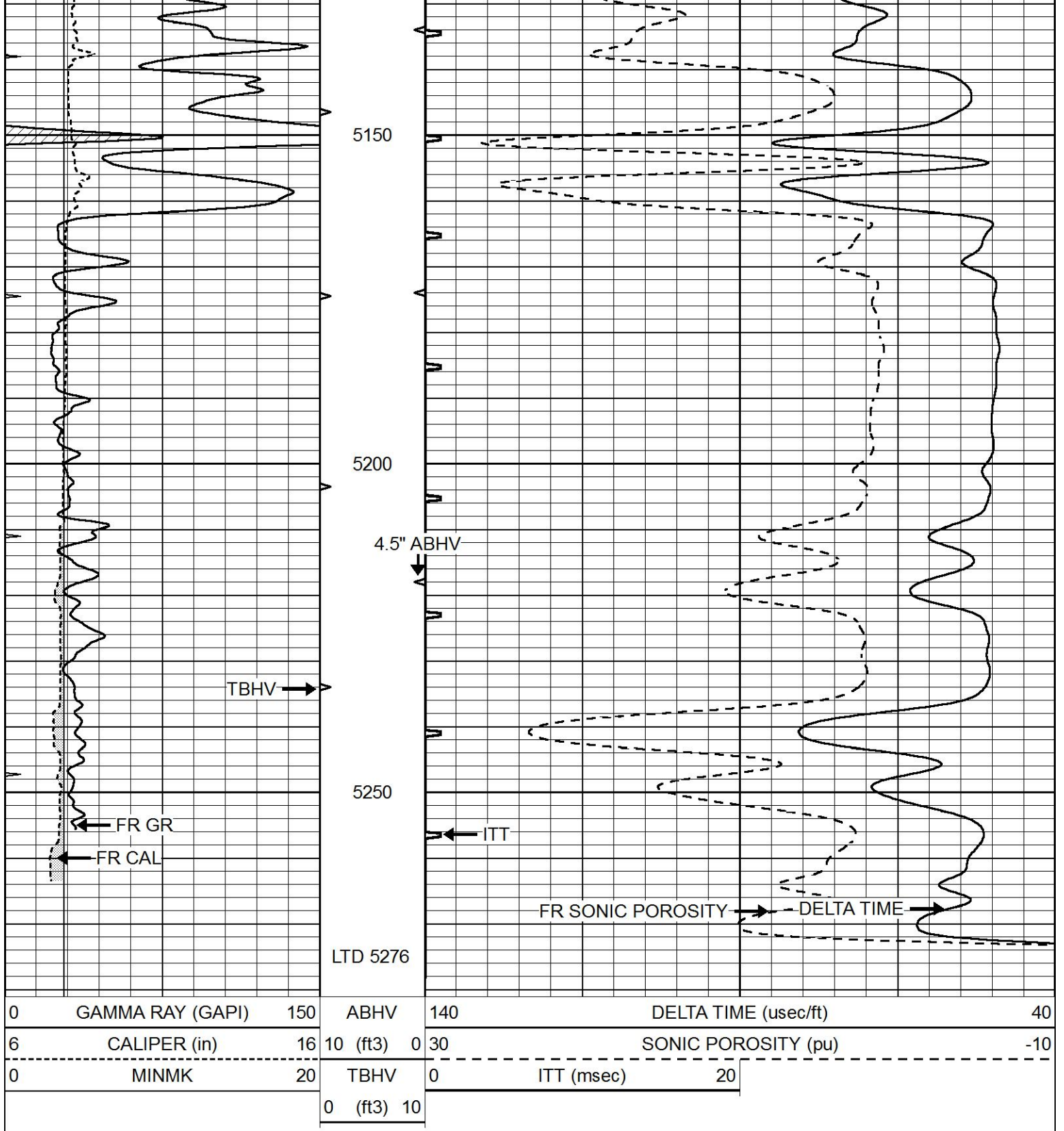
4600

4650









REPEAT SECTION

Database File 8334pe.db
 Dataset Pathname pass6.2
 Presentation Format slt
 Dataset Creation Sun Nov 05 19:02:33 2023
 Charted by Depth in Feet scaled 1:240

0	GAMMA RAY (GAPI)	150	ABHV	140	DELTA TIME (usec/ft)	40
---	------------------	-----	------	-----	----------------------	----

6	CALIPER (in)	16	10 (ft3)	0	30	SONIC POROSITY (pu)	-10
0	MINMK	20	TBHV	0	ITT (msec)	20	
			0 (ft3)	10			

