



MIDWEST WIRELINE

MICRORESISTIVITY LOG

Company Griffin Management, LLC
 Well Reta #1
 Field Sawyer
 County Pratt
 State Kansas

Company Griffin Management, LLC
 Well Reta #1
 Field Sawyer
 County Pratt
 State Kansas

Location: API #: 15-151-22577-00-00
 1650 FSL & 2310 FWL
 SEC 26 TWP 29S RGE 13W
 Permanent Datum Ground Level Elevation 1871
 Log Measured From Kelly Bushing
 Drilling Measured From Kelly Bushing
 Other Services
 CNL/CDL
 DIL/BHCS
 Elevation
 K.B. 1876
 D.F.
 G.L. 1871

Date	10/31/2023
Run Number	One
Depth Driller	4741
Depth Logger	4744
Bottom Logged Interval	4743
Top Log Interval	2800
Casing Driller	8:625 @ 386
Casing Logger	385
Bit Size	7.875
Type Fluid in Hole	Chemical
Salinity, ppm CL	4000
Density / Viscosity	9.3 57
pH / Fluid Loss	10.5 8.8
Source of Sample	FLOWLINE
Rm @ Meas. Temp	0.50 @ 50
Rmt @ Meas. Temp	0.38 @ 50
Rmc @ Meas. Temp	0.68 @ 50
Source of Rmf / Rmc	CHARTS
Rm @ BHT	0.20 @ 123
Operating Rig Time	5 Hours
Max Rec. Temp. F	123
Equipment Number	P-108
Location	HAYS
Recorded By	D. Schmidt
Witnessed By	Eli Felts

<<< Fold Here >>>

All interpretations are opinions based on inferences from electrical or other measurements and Midwest Wireline LLC cannot and does not guarantee the accuracy or correctness of any interpretation, and Midwest Wireline LLC will not be liable or responsible for any loss, costs, damages, or expenses incurred or sustained by anyone resulting from any interpretation made by any of our officers, agents or employees.

Comments

N/A DENOTES NOT AVAILABLE OR NON-APPLICABLE.

Sawyer,
 1 South to 110th St,
 3/4 West, North in driveway,
 East to location

Log Measured From: Kelly Bushing 5 Ft. Above Permanent Datum

THANK YOU FOR USING MIDWEST WIRELINE LLC
 785-625-3858

Your Midwest Wireline Crew

Engineer: D. Schmidt
 Operator:
 Operator:
 Operator:

This Log Record Was Witnessed By

Primary Witness: Eli Felts
 Secondary Witness:
 Secondary Witness:
 Secondary Witness:

Sensor	Offset (ft)	Schematic	Description	Length (ft)	O.D. (in)	Weight (lb)	
GR	40.75		GR-M&W (105)	3.00	3.50	50.00	
CNLSC CNSSC	37.65 36.90		CNT-M&W (210)	5.00	3.50	100.00	
			MWLith-STEP LITHO (704-10)	8.92	5.00	250.00	
LCAL	28.21						
LLW8N	28.21						
LLW7N	28.21						
LLW6N	28.21						
LLW5N	28.21						
LLW4N	28.21						
LLW3N	28.21						
LLW2N	28.21			ML-PSI STKBL ML (402)	7.58	4.00	65.00
LLW1N	28.21						
LSLOCK	27.96						
LLLOCK	27.96						
PELTMPR	27.96						
LSHVNG	27.96						
LLHVNG	27.96						
LSW8N	27.71						
LSW7N	27.71						
LSW6N	27.71						
LSW5N	27.71						
LSW4N	27.71						
LSW3N	27.71						
LSW2N	27.71						
LSW1N	27.71						
MCAL	19.58		DIL-M&W (505 HT)	18.25	3.50	220.00	
MI	19.58						
MN	19.58						
RLL3F	15.50						
RLL3	15.50						
CILD	8.33						
CILM	4.50						
SP	0.20						

Dataset: griffin_reta 1.db: field/well/stkml/pass3.1
 Total length: 42.75 ft
 Total weight: 685.00 lb
 O.D.: 5.00 in

Log Variables

DatabaseC:\ProgramData\Warrior\Data\griffin_reta 1.db
 Dataset field/well/stkml/pass3.1/_vars_

Top - Bottom

A	BOREID in	BOTTEMP degF	CASEOD in	CASETHCK in	FLUIDDEN g/cc	M	MATRXDEN g/cc
1	7.875	123	5.5	0	1	2	2.71
NPORSEL	PERFS	SNDERR mmho/m	SNDERRM mmho/m	SPSHIFT mV	SRFTEMP degF	SZCOR	TDEPTH ft
Limestone	No	-6	2	450	30	Off	4744

Variable Description

A : Cement Factor (a)
 BOREID : Borehole I.D.
 BOTTEMP : Bottom Hole Temperature
 CASEOD : Casing O.D.
 CASETHCK : Casing Thickness
 FLUIDDEN : Fluid Density
 M : Cement Exp (m)
 MATRXDEN : Matrix Density

NPORSEL : Neutron Porosity Curve Select
 PERFS : Perforation Flag
 SNDERR : Deep Sonde Error Correction
 SNDERRM : Medium Sonde Error Correction
 SPSHIFT : S.P. Baseline Offset
 SRFTEMP : Surface Temperature
 SZCOR : CN Size Cor. ?
 TDEPTH : Total Depth



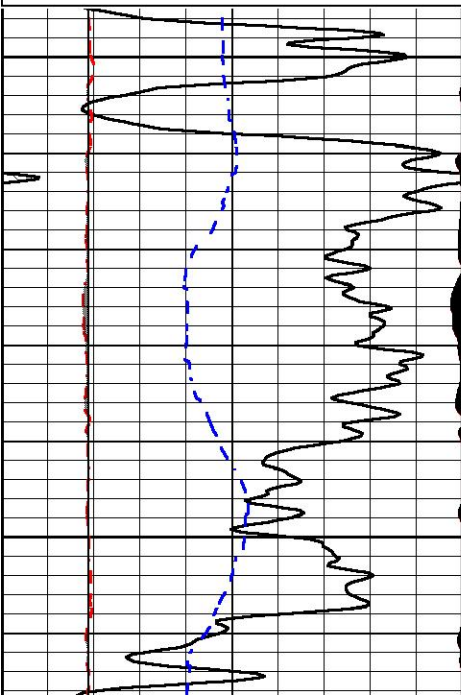
DETAIL SECTION

MAIN PASS

Database File griffin_reta 1.db
 Dataset Pathname stkml/pass3.1
 Presentation Format _micro
 Dataset Creation Wed Nov 01 02:38:22 2023
 Charted by Depth in Feet scaled 1:240

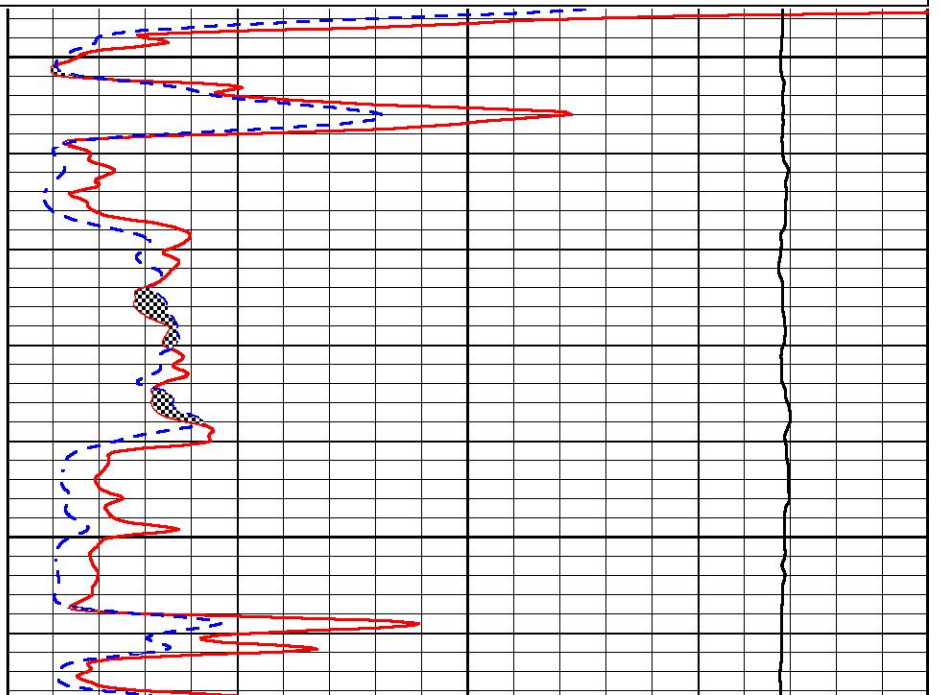
0	Gamma Ray (GAPI)	150
6	Micro Caliper (in)	16
2.875	mcal (in)	7.875
-200	SP (mV)	0

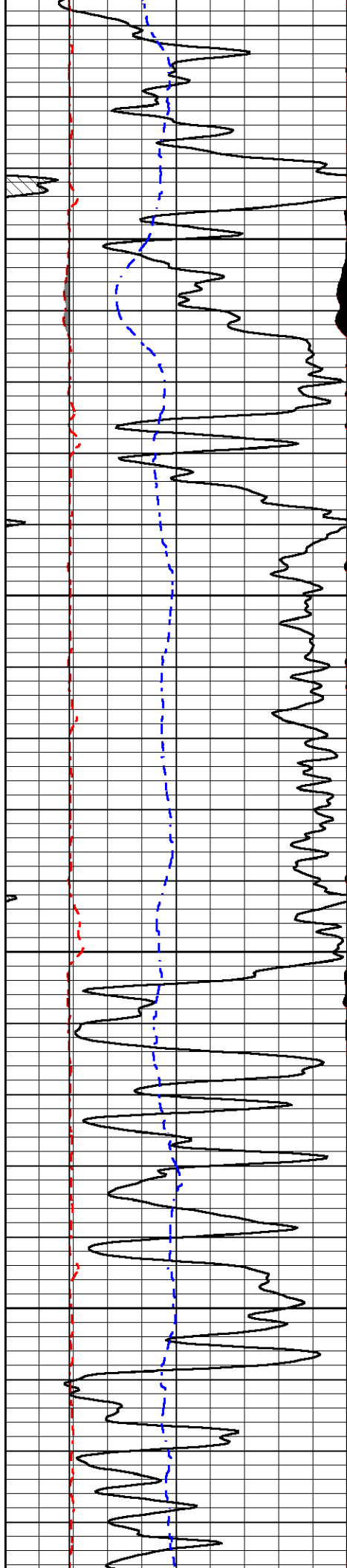
0	Micro Inverse 1 X 1 (Ohm-m)	40
0	Micro Normal 2" (Ohm-m)	40
10000	Line Weight (lb)	0



2800

2850



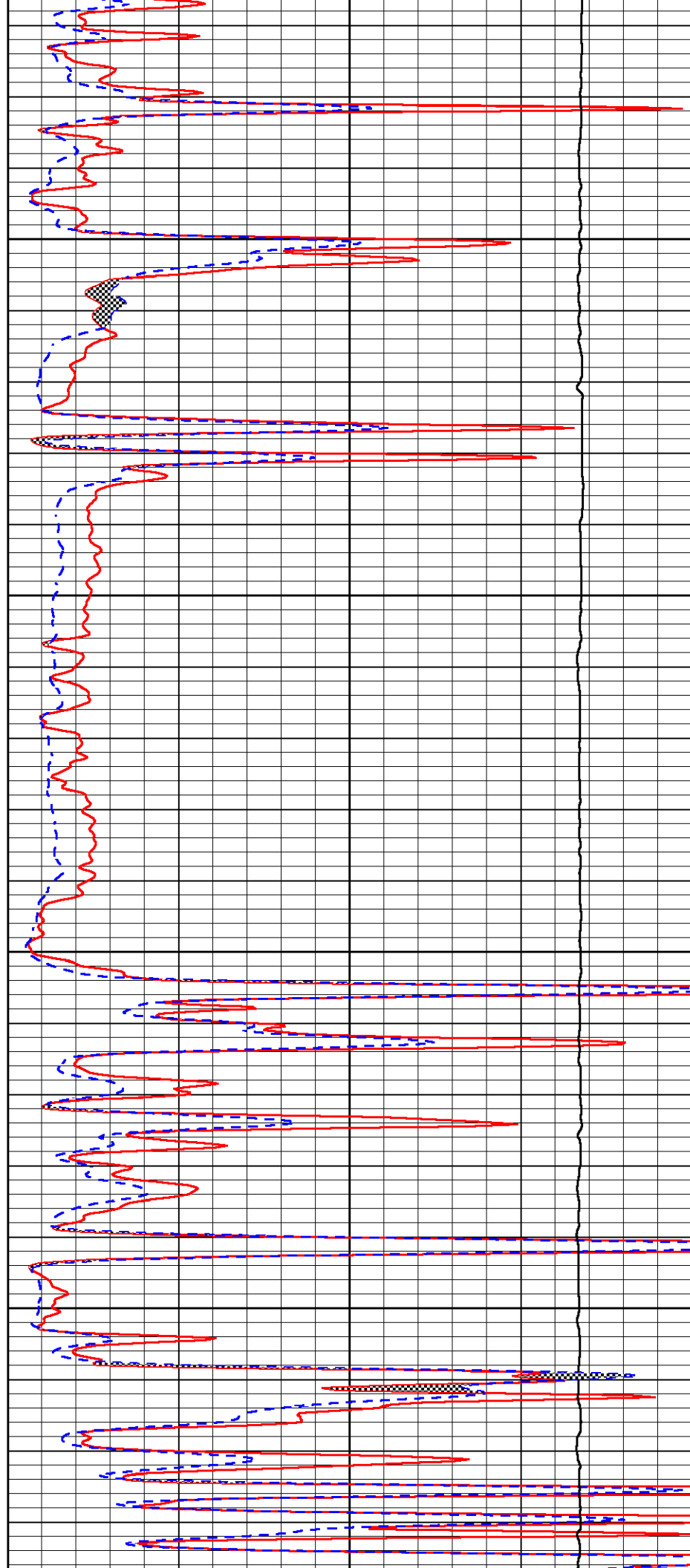


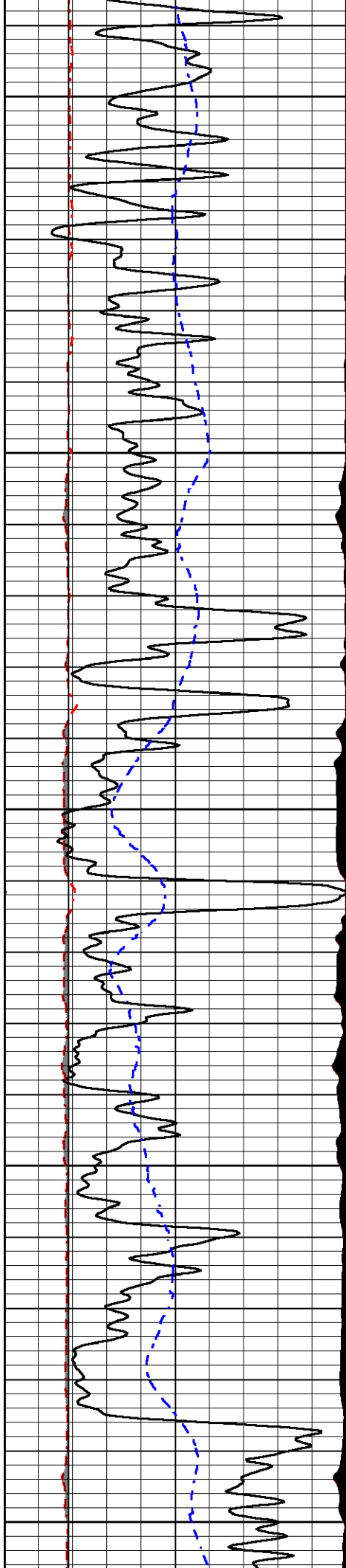
2900

2950

3000

3050





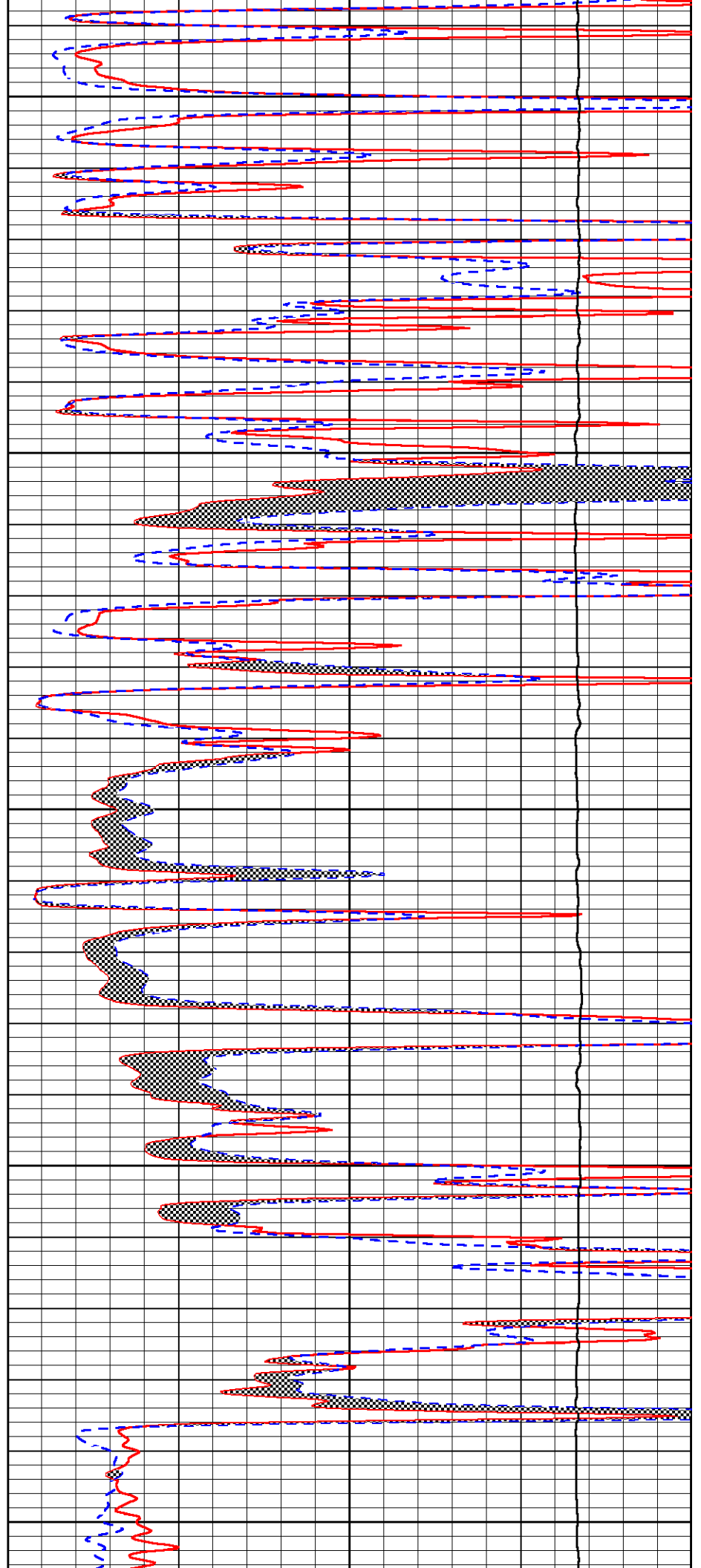
3100

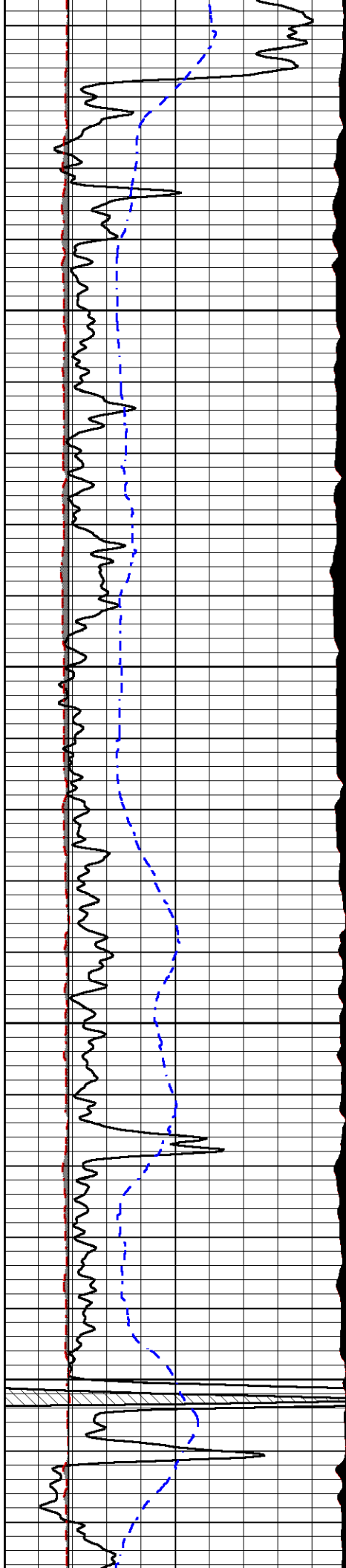
3150

3200

3250

3300



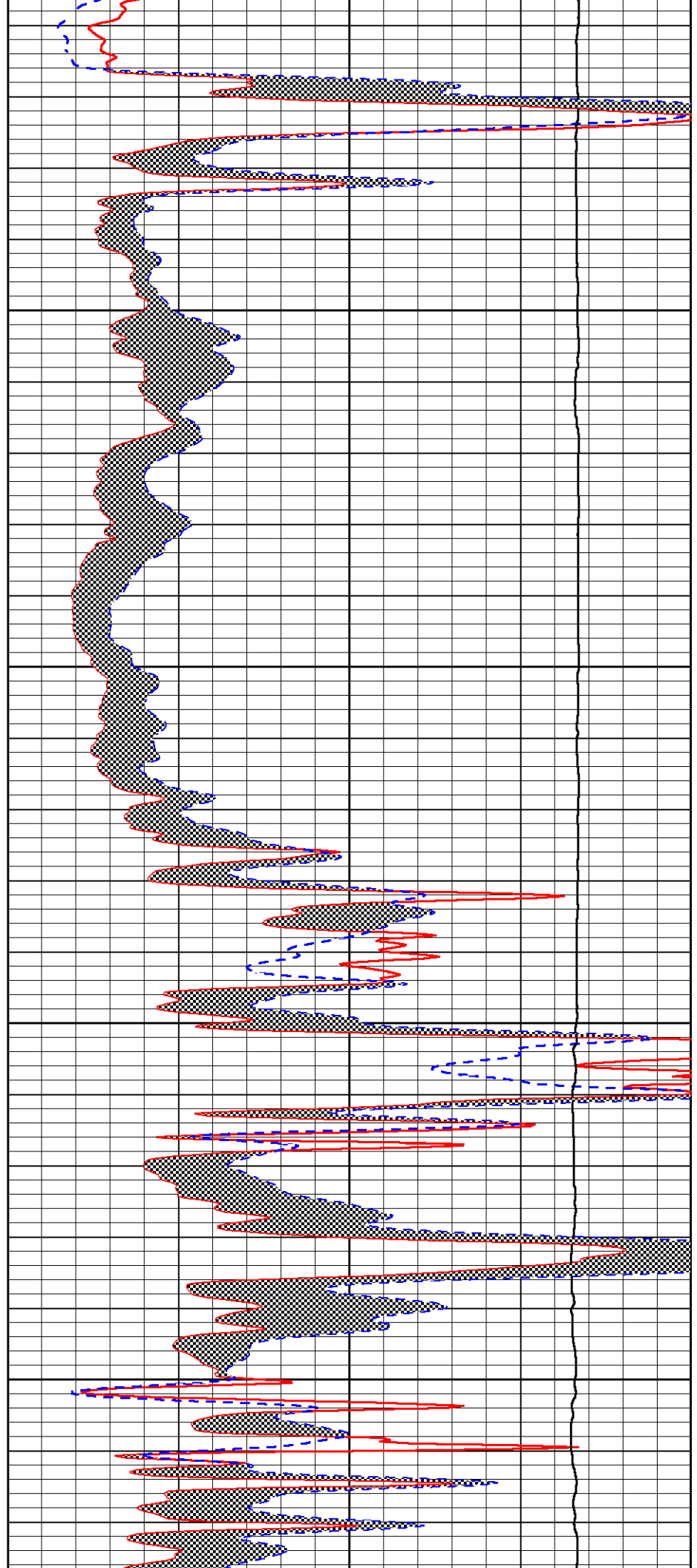


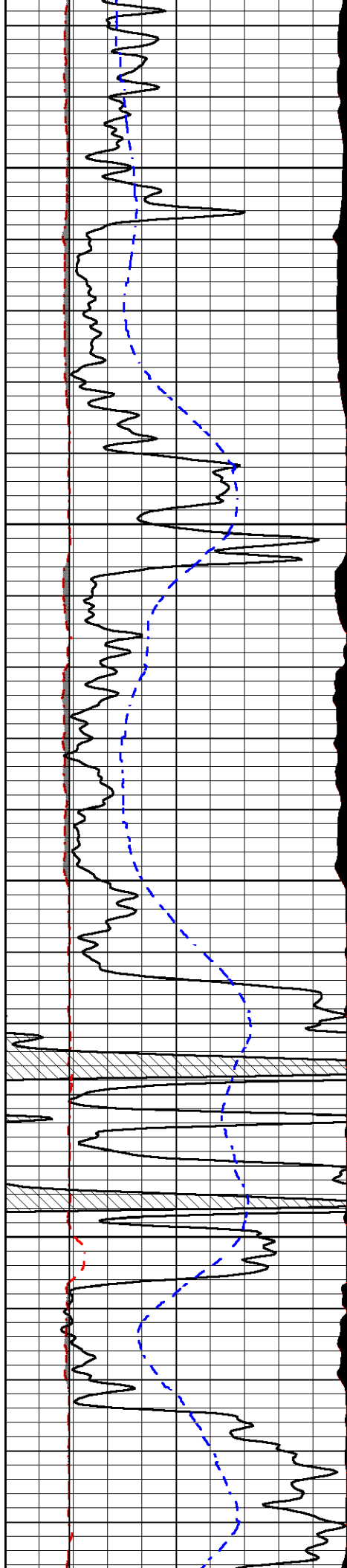
3350

3400

3450

3500



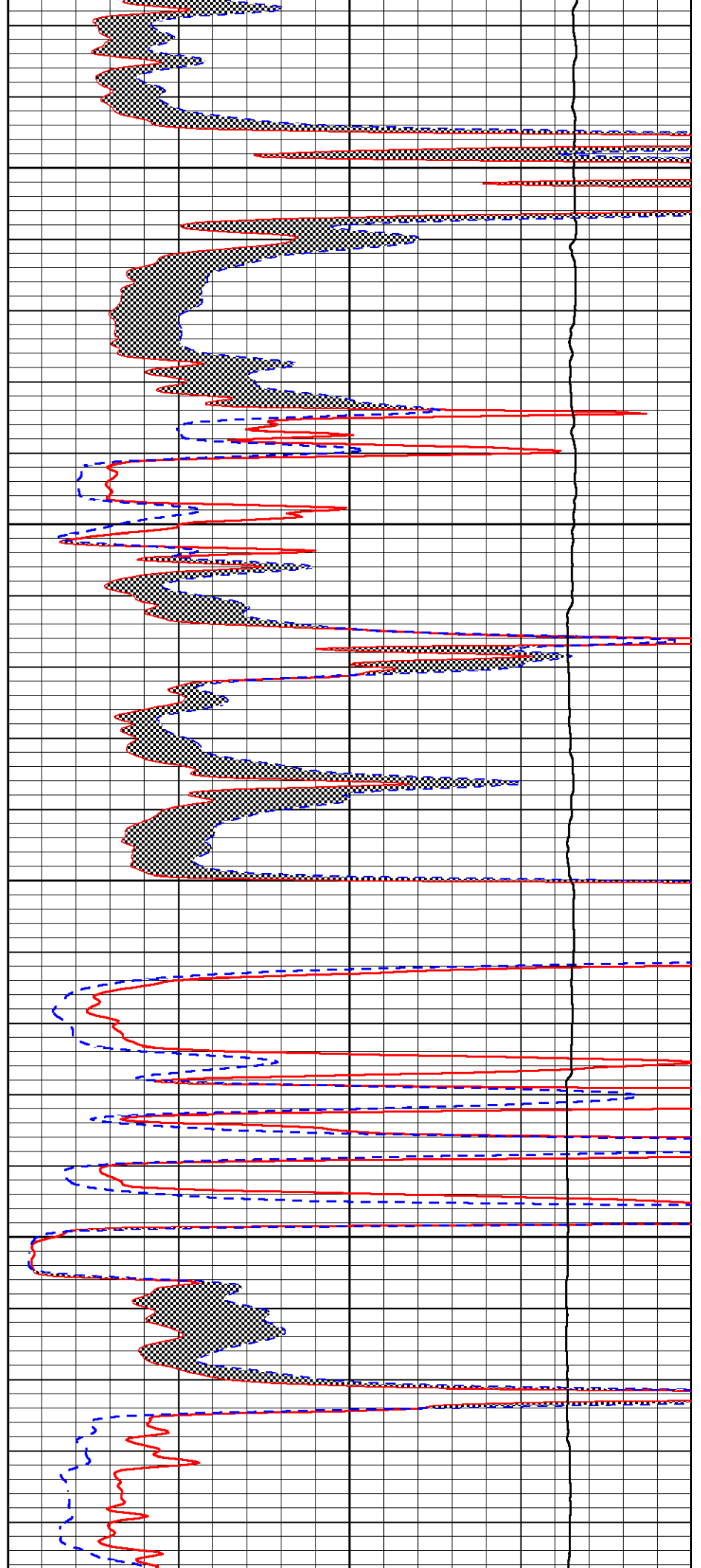


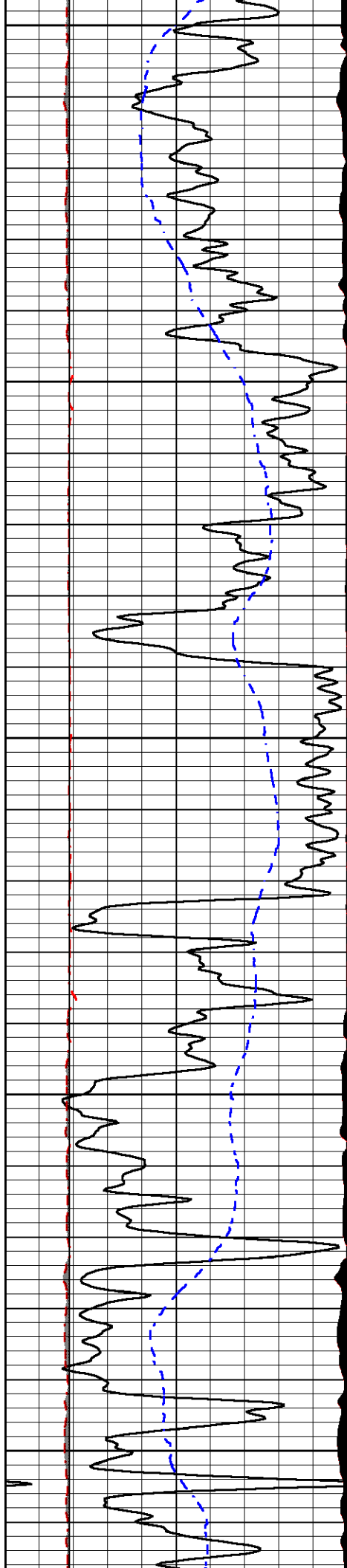
3550

3600

3650

3700





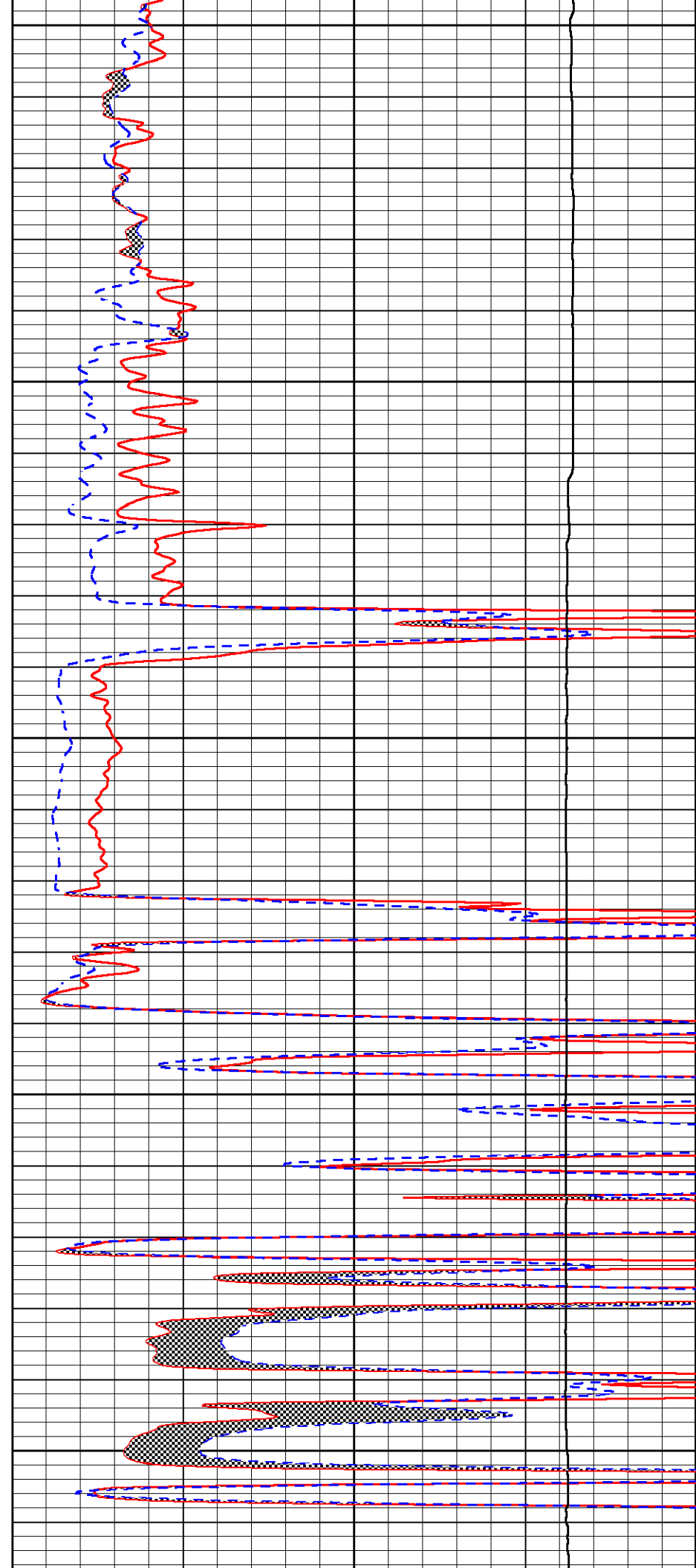
3750

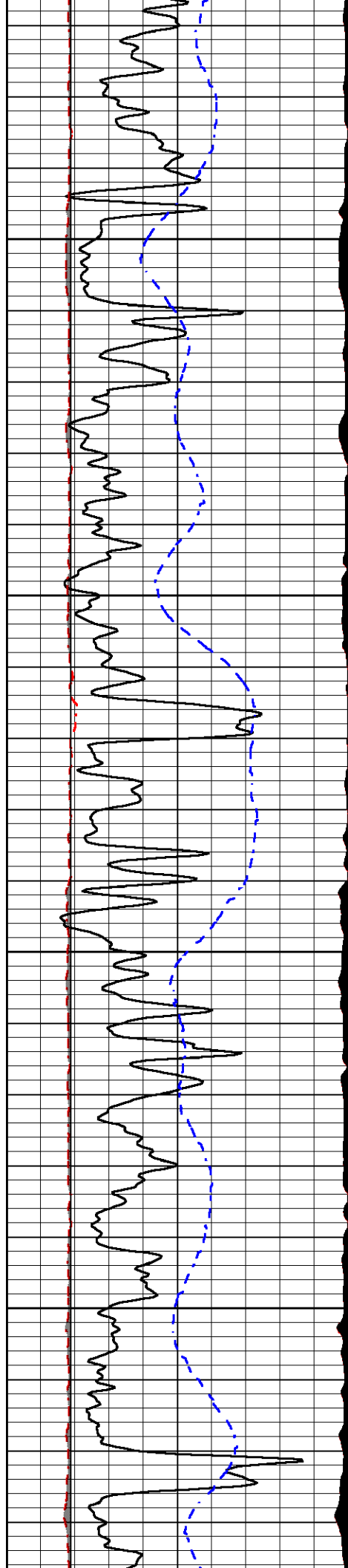
3800

3850

3900

3950



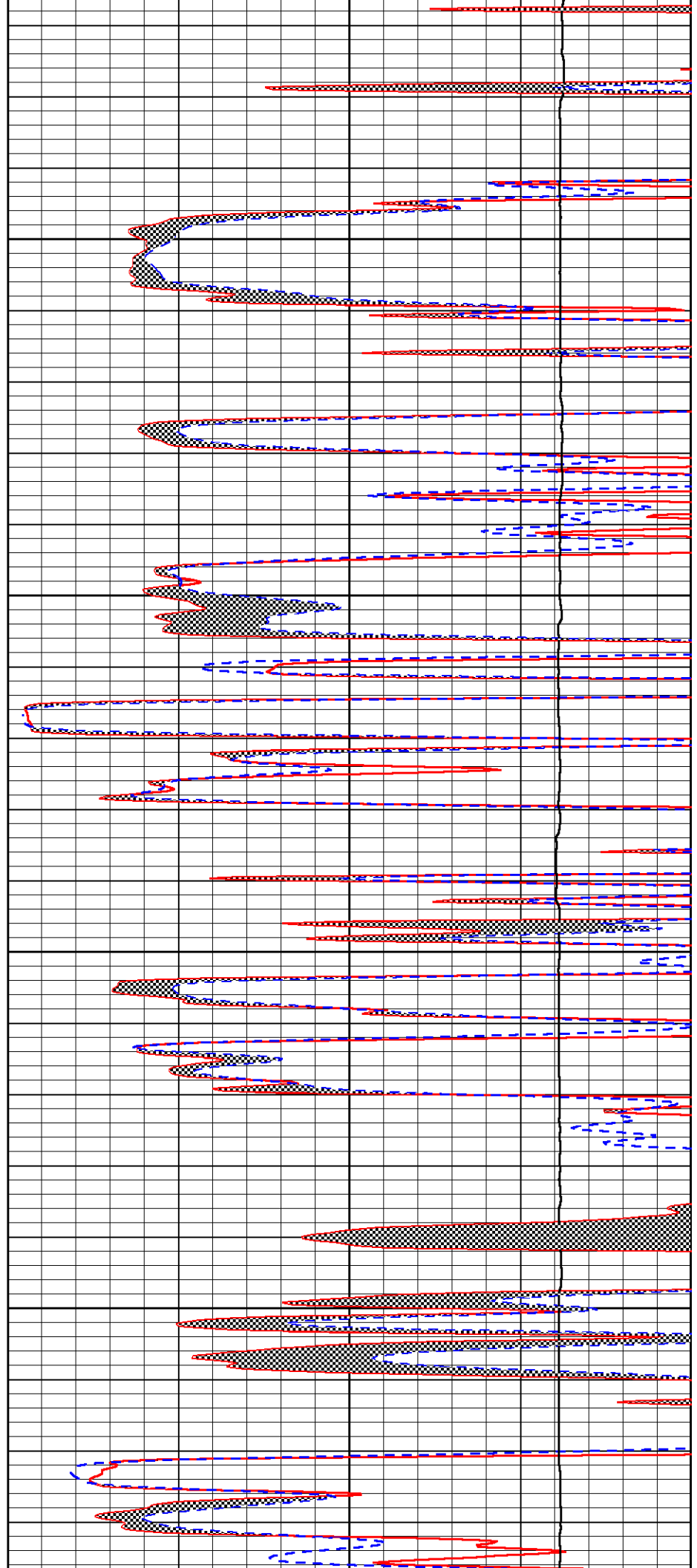


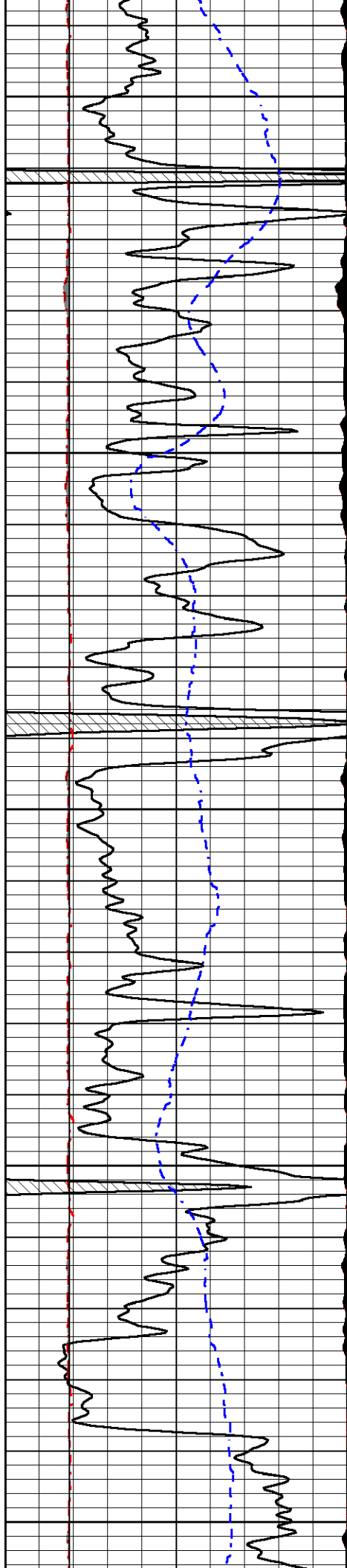
4000

4050

4100

4150





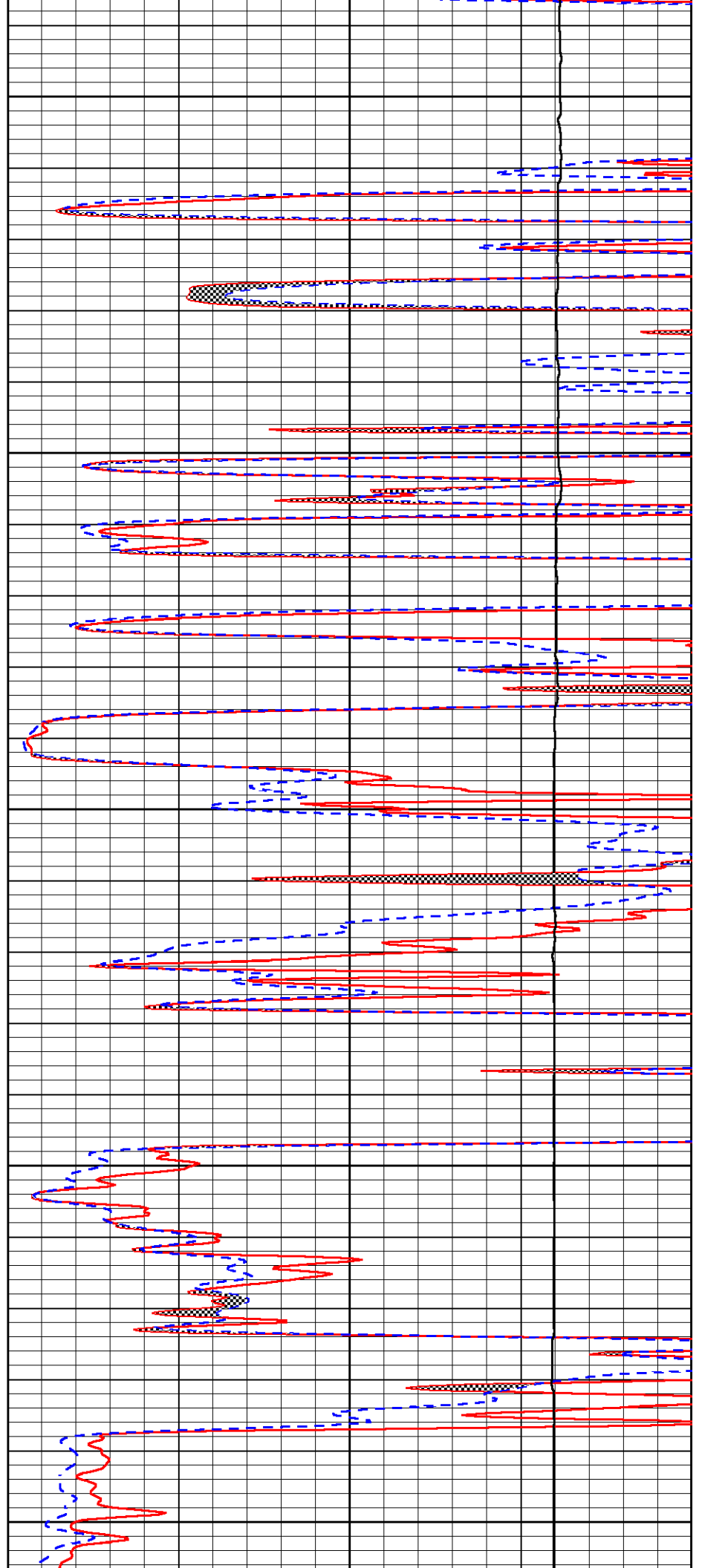
4200

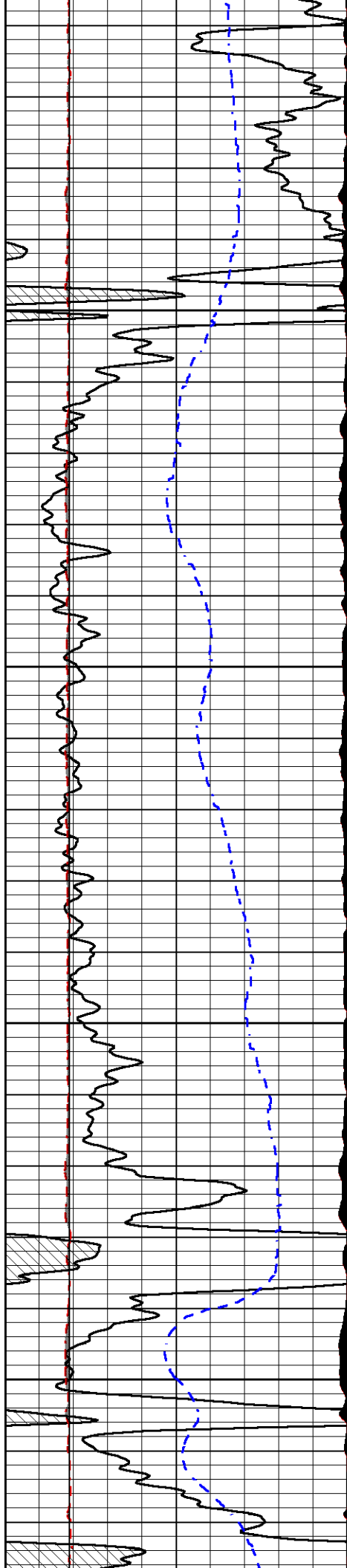
4250

4300

4350

4400



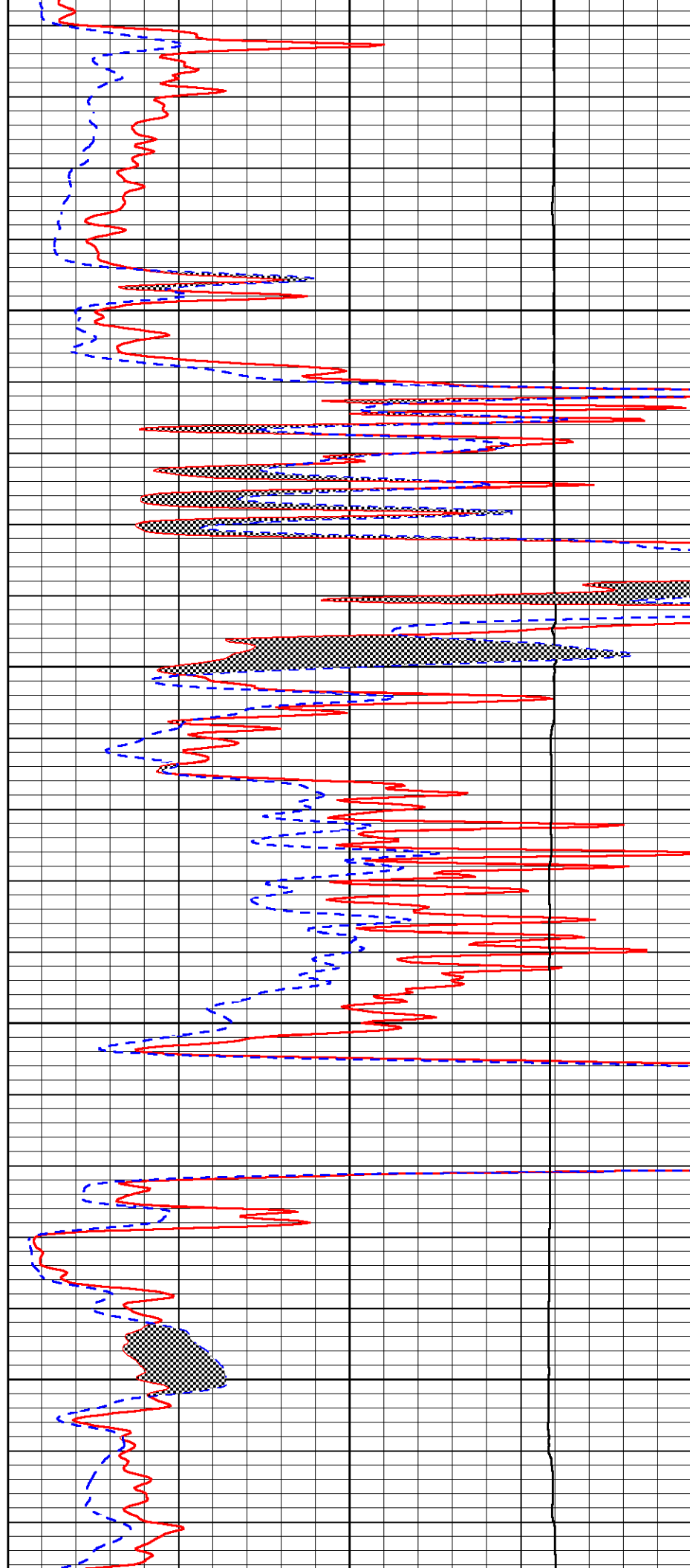


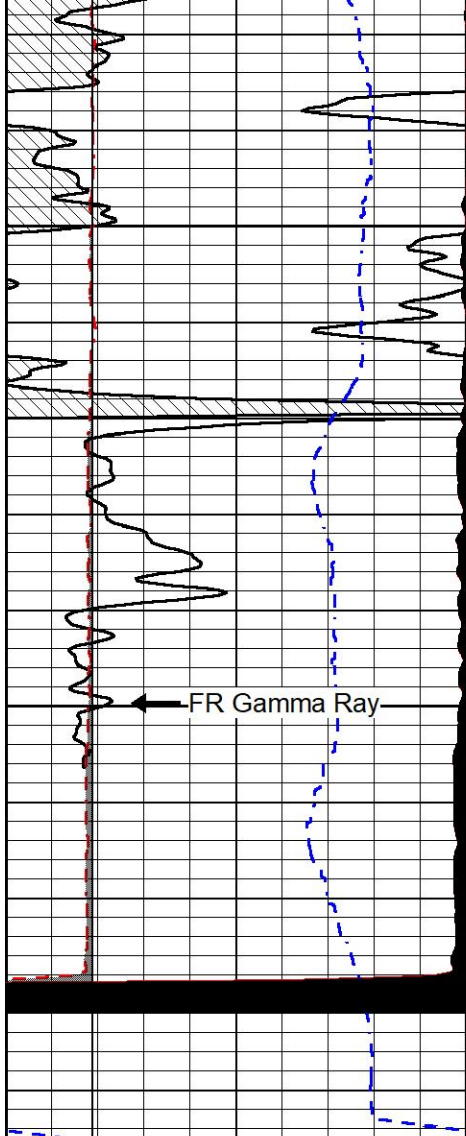
4450

4500

4550

4600

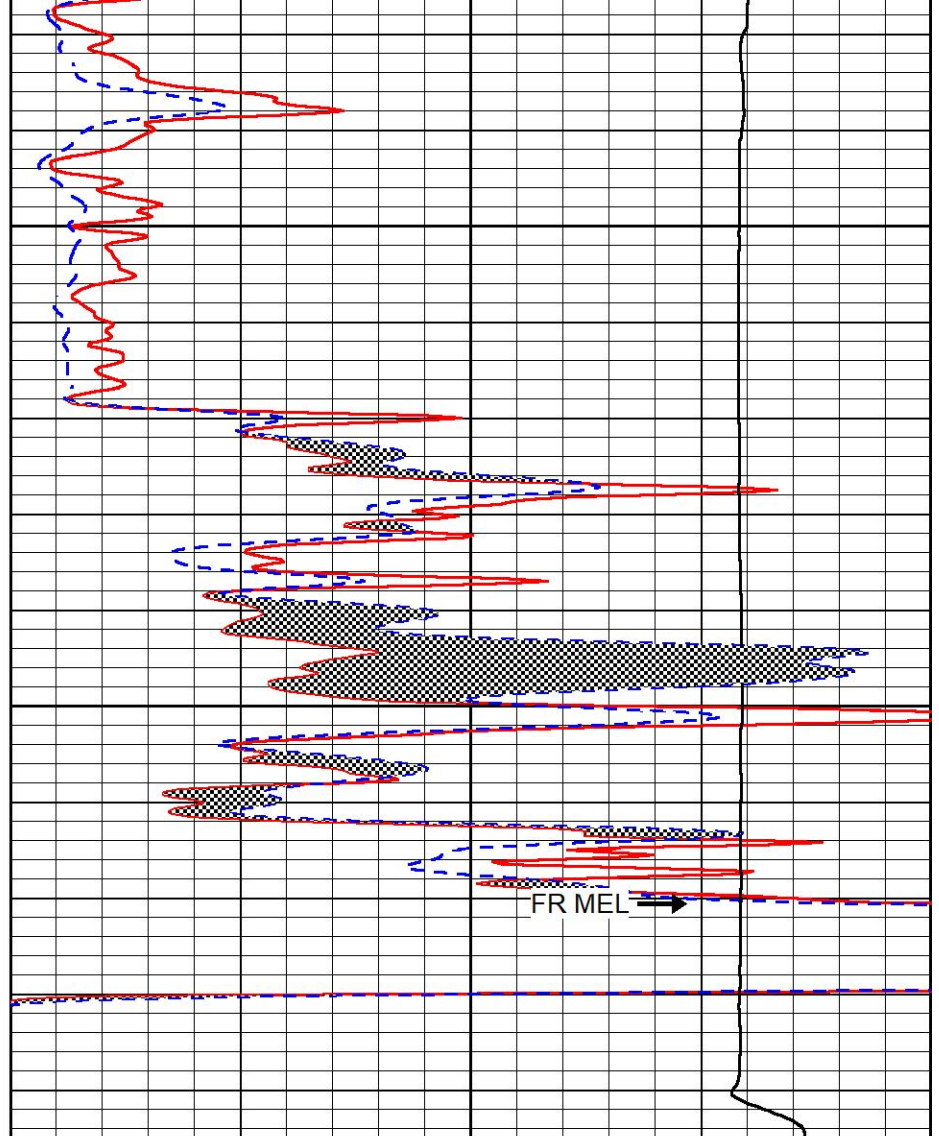




4650

4700

0	Gamma Ray (GAPI)	150
6	Micro Caliper (in)	16
2.875	mcal (in)	7.875
-200	SP (mV)	0



0	Micro Inverse 1 X 1 (Ohm-m)	40
0	Micro Normal 2" (Ohm-m)	40
10000	Line Weight (lb)	0



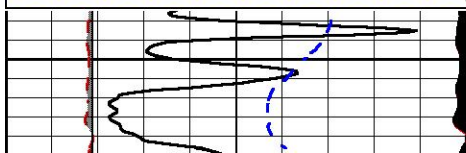
REPEAT SECTION

REPEAT PASS

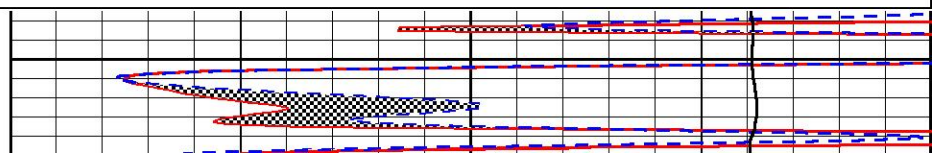
Database File griffin_reta 1.db
 Dataset Pathname stkml/pass2.1
 Presentation Format _micro
 Dataset Creation Wed Nov 01 01:05:46 2023
 Charted by Depth in Feet scaled 1:240

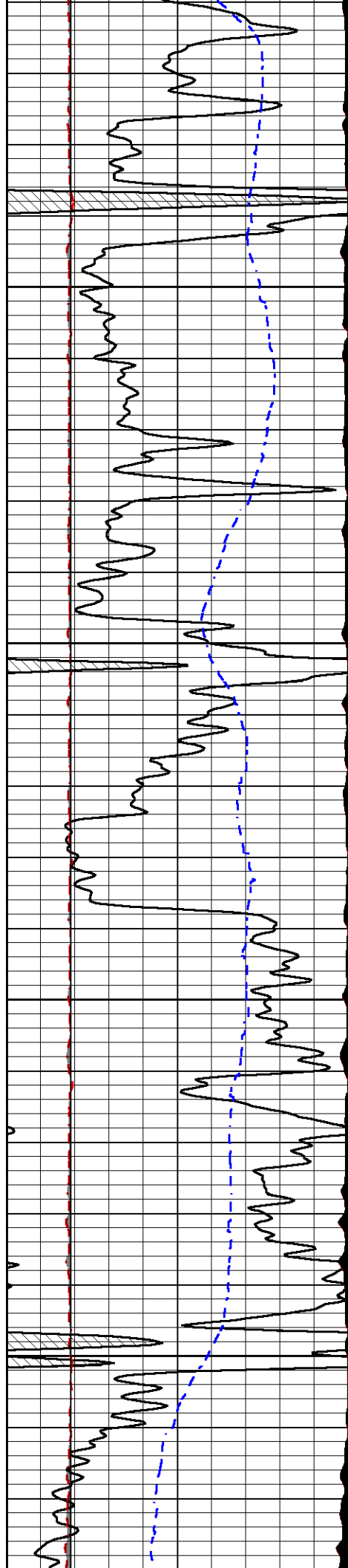
0	Gamma Ray (GAPI)	150
6	Micro Caliper (in)	16
2.875	mcal (in)	7.875
-200	SP (mV)	0

0	Micro Inverse 1 X 1 (Ohm-m)	40
0	Micro Normal 2" (Ohm-m)	40
10000	Line Weight (lb)	0



4250



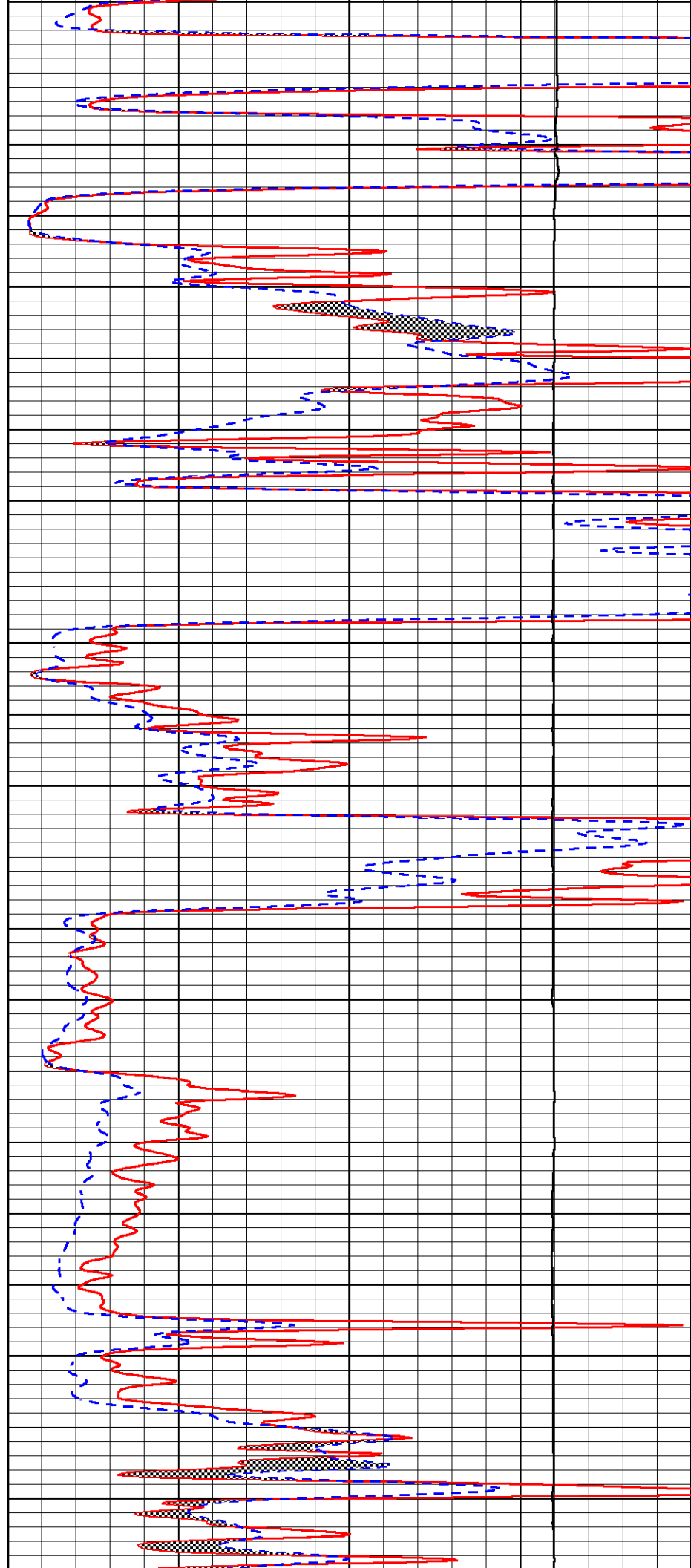


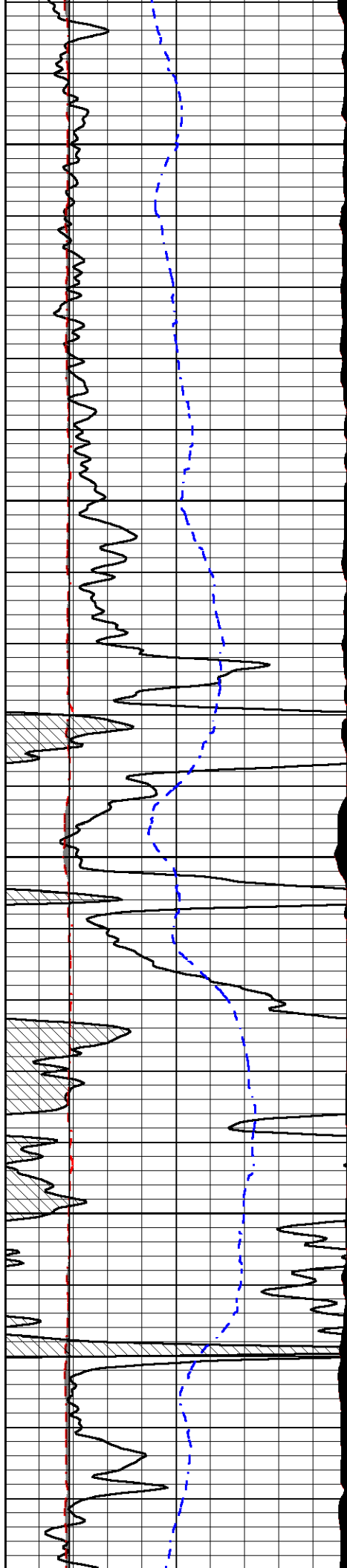
4300

4350

4400

4450





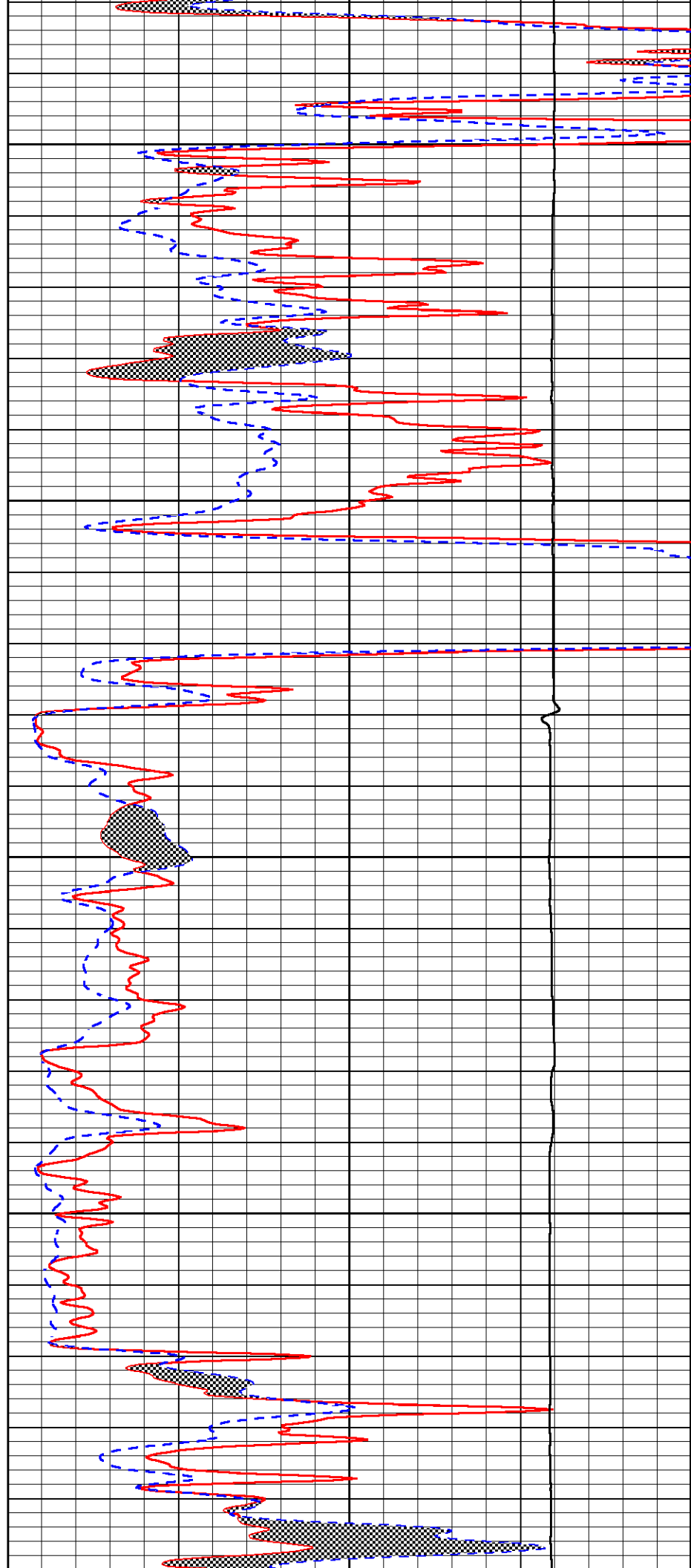
4500

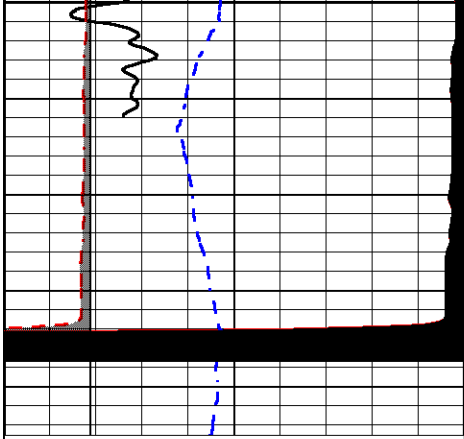
4550

4600

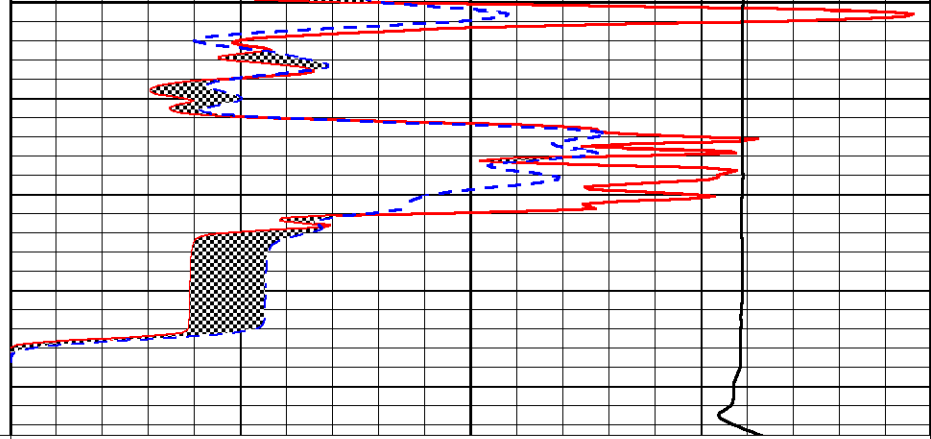
4650

4700





0	Gamma Ray (GAPI)	150
6	Micro Caliper (in)	16
2.875	mcal (in)	7.875
-200	SP (mV)	0



0	Micro Inverse 1 X 1 (Ohm-m)	40
0	Micro Normal 2" (Ohm-m)	40
10000	Line Weight (lb)	0

Calibration Report

Database File griffin_reta 1.db
 Dataset Pathname stkml/pass3.1
 Dataset Creation Wed Nov 01 02:38:22 2023

Dual Induction Calibration Report

Serial-Model: 505 HT-M&W
 Surface Cal Performed: Sat Oct 21 23:47:45 2023

Loop:	Readings		References			Results	
	Air	Loop	Air	Loop		m	b
Deep	167.000	835.000	0.000	255.800	mmho/m	0.500	-50.000
Medium	1348.000	1348.000	0.000	255.800	mmho/m	0.430	-45.000

Microlog Calibration Report

Serial-Model: 402-PSI STKBL ML
 Performed: Fri Oct 20 13:01:04 2023

	Readings		References			Results	
	Zero	Cal	Zero	Cal		m	b
Normal	0.0037	0.0043	0.0000	10.0000	Ohm-m	21500.0000	-0.5000
Inverse	0.1208	0.0013	0.0000	10.0000	Ohm-m	21000.0000	0.0000
Caliper	1.0046	1.1419	5.5000	20.0000	in	50.0000	-44.5000

LITHODENSITY Calibration Report

Serial Number: 704-10
 Tool Model: STEP LITHO
 Performed: Mon Jul 10 14:32:46 2023

Source:

	Win1	Win2	Win3	Win4	Win5	Win6	Win7	Win8	
Background:									
SS:	51	52	200	248	22	69	43	1	cps
LS:	86	98	369	472	53	149	98	3	cps

Aluminum:

Aluminum:	SS: 770	911	2087	1811	37	71	43	2	cps
	LS: 972	1684	3061	1465	60	147	96	5	cps
Magnesium:	SS: 1299	1502	3449	2640	40	69	47	3	cps
	LS: 4207	6947	11930	4497	91	136	95	12	cps
Aluminum+Iron:	SS: 502	651	1766	1595	36	70	46	1	cps
	LS: 571	1190	2606	1318	59	148	98	5	cps

	Density			PE					
	Actual	Calibrated		Actual	Calibrated	Quality			
Background:									
SS:						0.235			
LS:						0.209			
Aluminum:									
SS:	2.6000	2.6000	g/cc			0.245			
LS:	2.6000	2.6000	g/cc			0.210			
Magnesium:									
SS:	1.6800	1.6800	g/cc	2.5700	2.5700	0.192			
LS:	1.6800	1.6800	g/cc	2.5700	2.5700	0.177			
Aluminum+Iron:									
SS:						6.1800	0.198		
LS:						6.1800	0.206		

Caliper:	Reference:	Reading:
Small Ring:	6.0 in	0.2
Large Ring:	16.0 in	0.8
Gain:	18.088	
Offset:	0.255	

Compensated Neutron Calibration Report

Serial Number: 210
Tool Model: M&W

CALIBRATION

Detector	Readings	Target	Normalization
Short Space	6240.00 cps	1000.00 cps	1.6025
Long Space	460.00 cps	1000.00 cps	1.9500

Gamma Ray Calibration Report

Serial Number: 105
Tool Model: M&W
Performed: Sat Oct 21 23:48:19 2023

Calibrator Value: 500.0 GAPI

Background Reading: 24.0 cps
Calibrator Reading: 637.0 cps

Sensitivity: 0.6000 GAPI/cps



Company: Griffin Management, LLC
Well: Reta #1
Field: Sawyer
County: Pratt
State: Kansas

	COURT REPORTER