

Sensor	Offset (ft)	Schematic	Description	Length (ft)	O.D. (in)	Weight (lb)
			CENT-PENGO	4.25	3.00	70.00
WVF4 WVF1	12.50 12.50		SLT-PENGO Short (607)	16.00	3.50	300.00
WVF3 WVF2	10.50 10.50					
			CENT-PENGO	4.25	3.00	70.00

Dataset: griffin_reta 1.db: field/well/son/pass2
 Total length: 24.50 ft
 Total weight: 440.00 lb
 O.D.: 3.50 in

Log Variables

DatabaseC:\ProgramData\Warrior\Data\griffin_reta 1.db
Dataset field/well/stkml/pass3.1/_vars_

Top - Bottom

A	BOREID in	BOTTEMP degF	CASEOD in	CASETHCK in	FLUIDDEN g/cc	M	MATRXDEN g/cc
1	7.875	123	5.5	0	1	2	2.71
NPORSEL	PERFS	SNDERR mmho/m	SNDERRM mmho/m	SPSHIFT mV	SRFTEMP degF	SZCOR	TDEPTH ft
Limestone	No	-6	2	450	30	Off	4744

Variable Description

A : Cement Factor (a)
BOREID : Borehole I.D.
BOTTEMP : Bottom Hole Temperature
CASEOD : Casing O.D.
CASETHCK : Casing Thickness
FLUIDDEN : Fluid Density
M : Cement Exp (m)
MATRXDEN : Matrix Density

NPORSEL : Neutron Porosity Curve Select
PERFS : Perforation Flag
SNDERR : Deep Sonde Error Correction
SNDERRM : Medium Sonde Error Correction
SPSHIFT : S.P. Baseline Offset
SRFTEMP : Surface Temperature
SZCOR : CN Size Cor. ?
TDEPTH : Total Depth

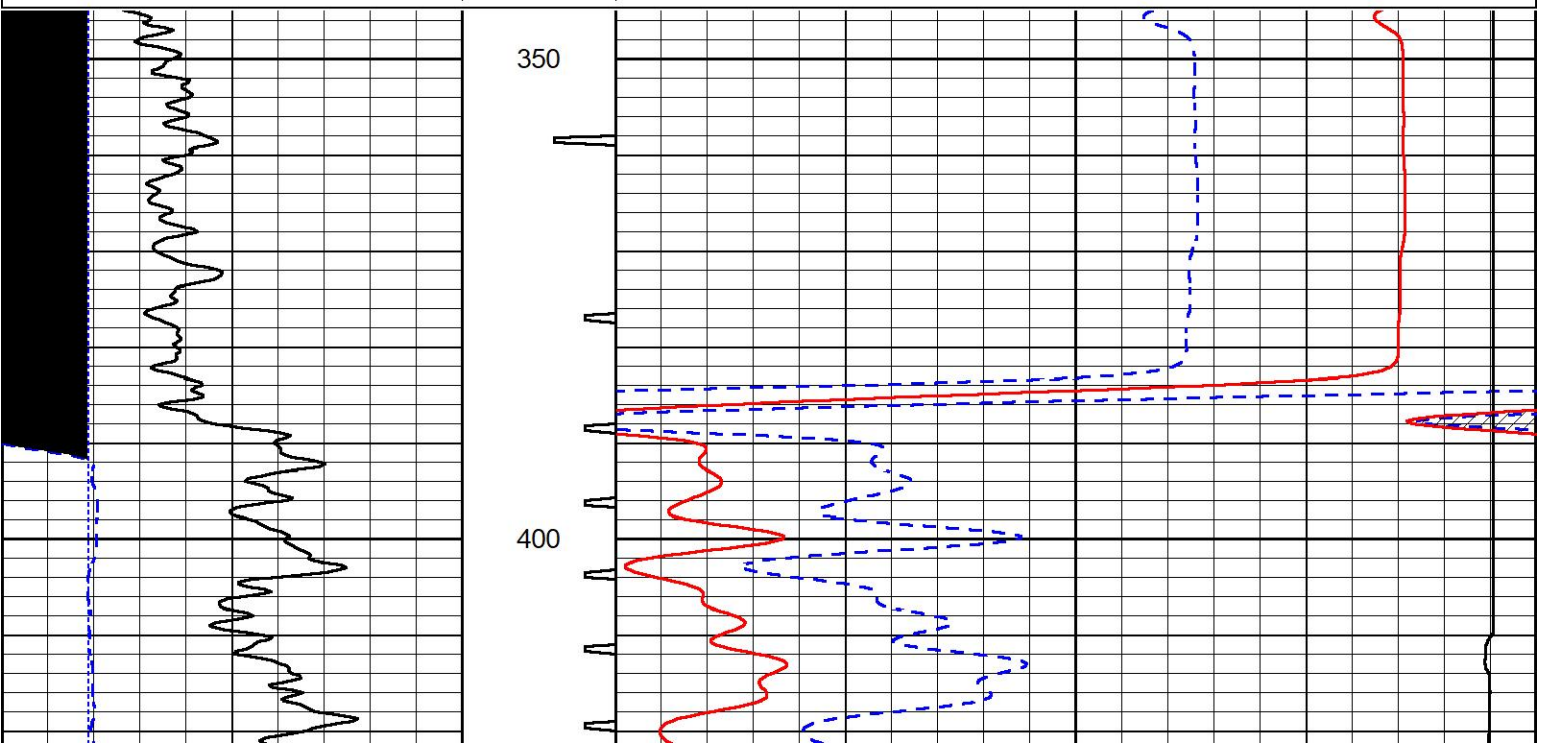


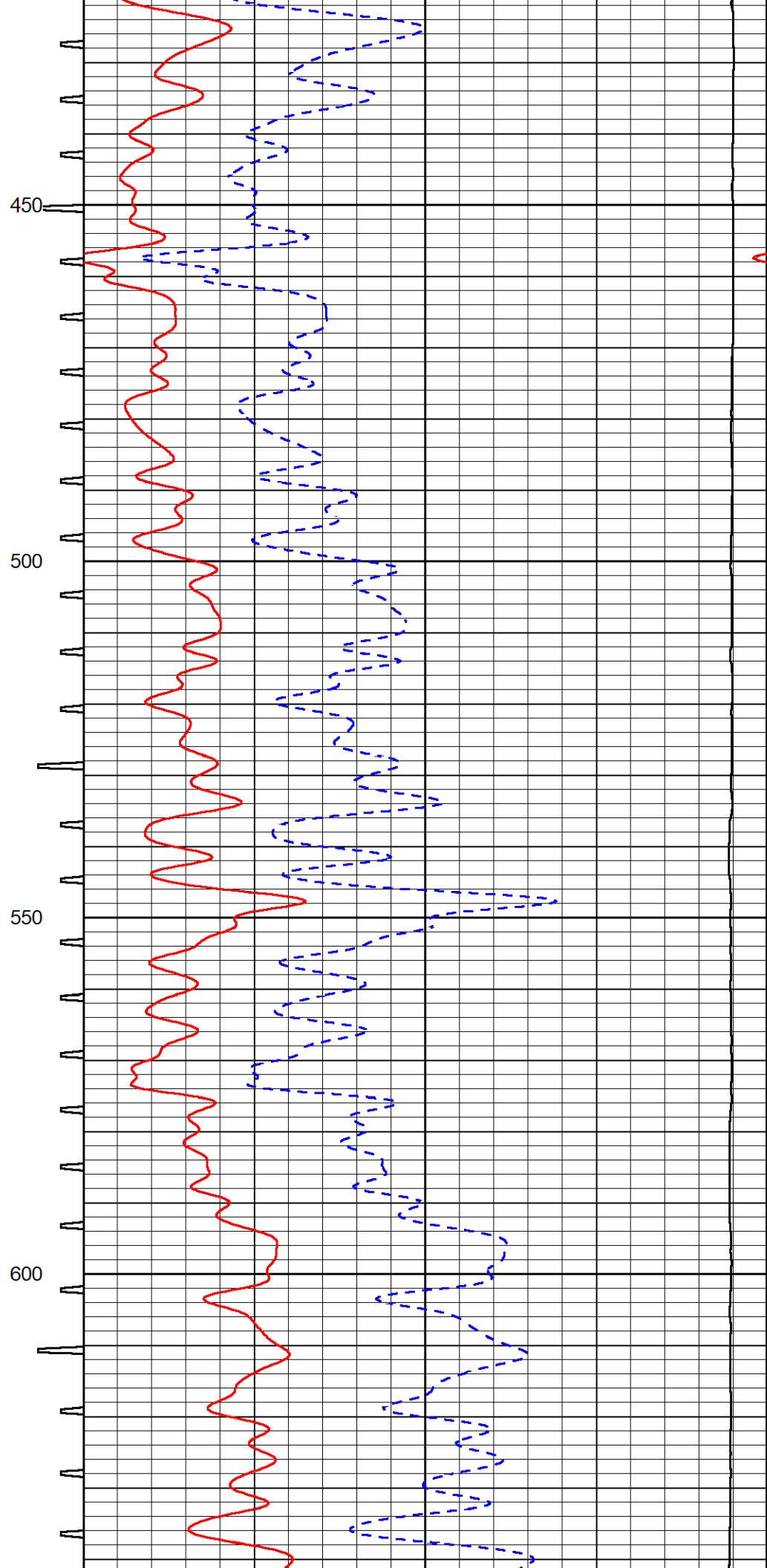
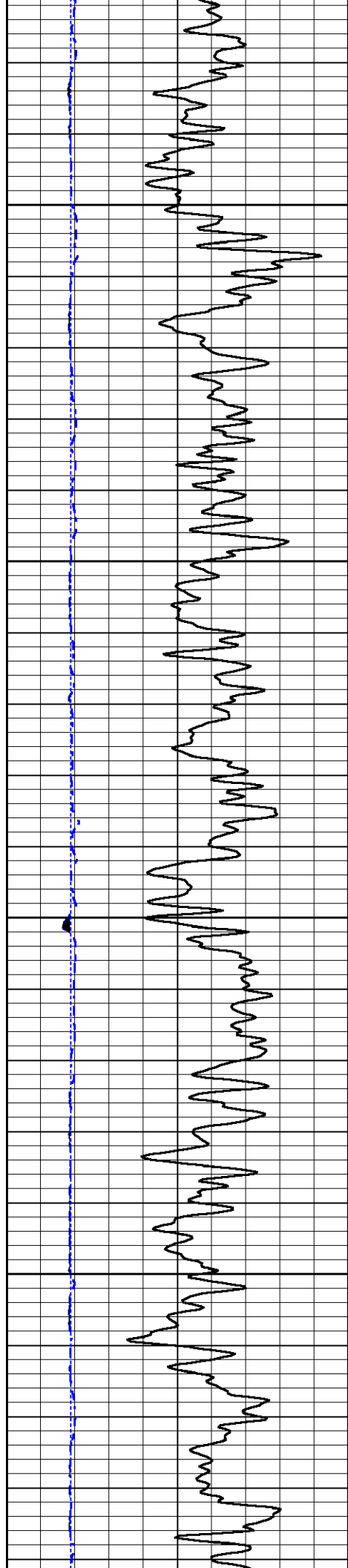
DETAIL SECTION

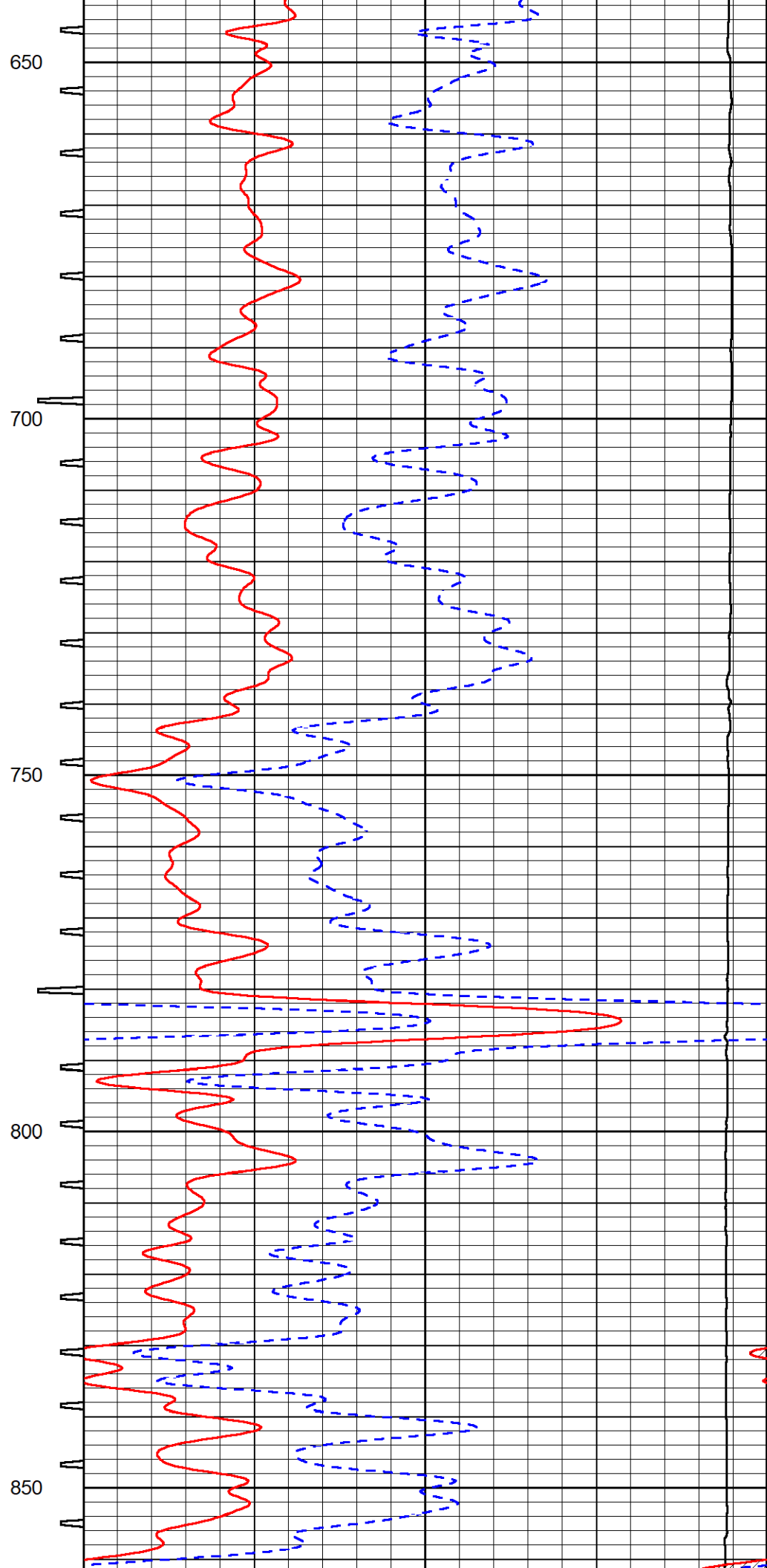
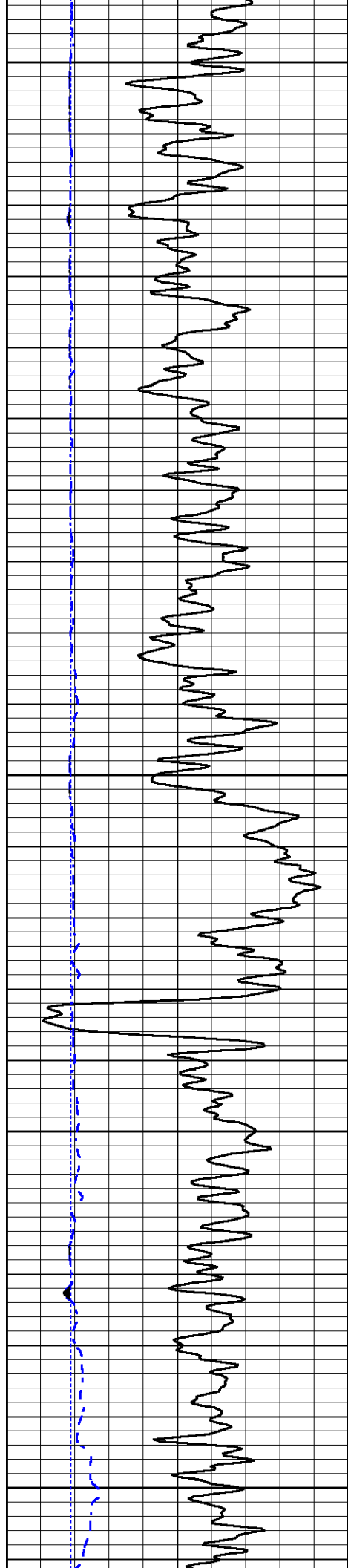
MAIN PASS

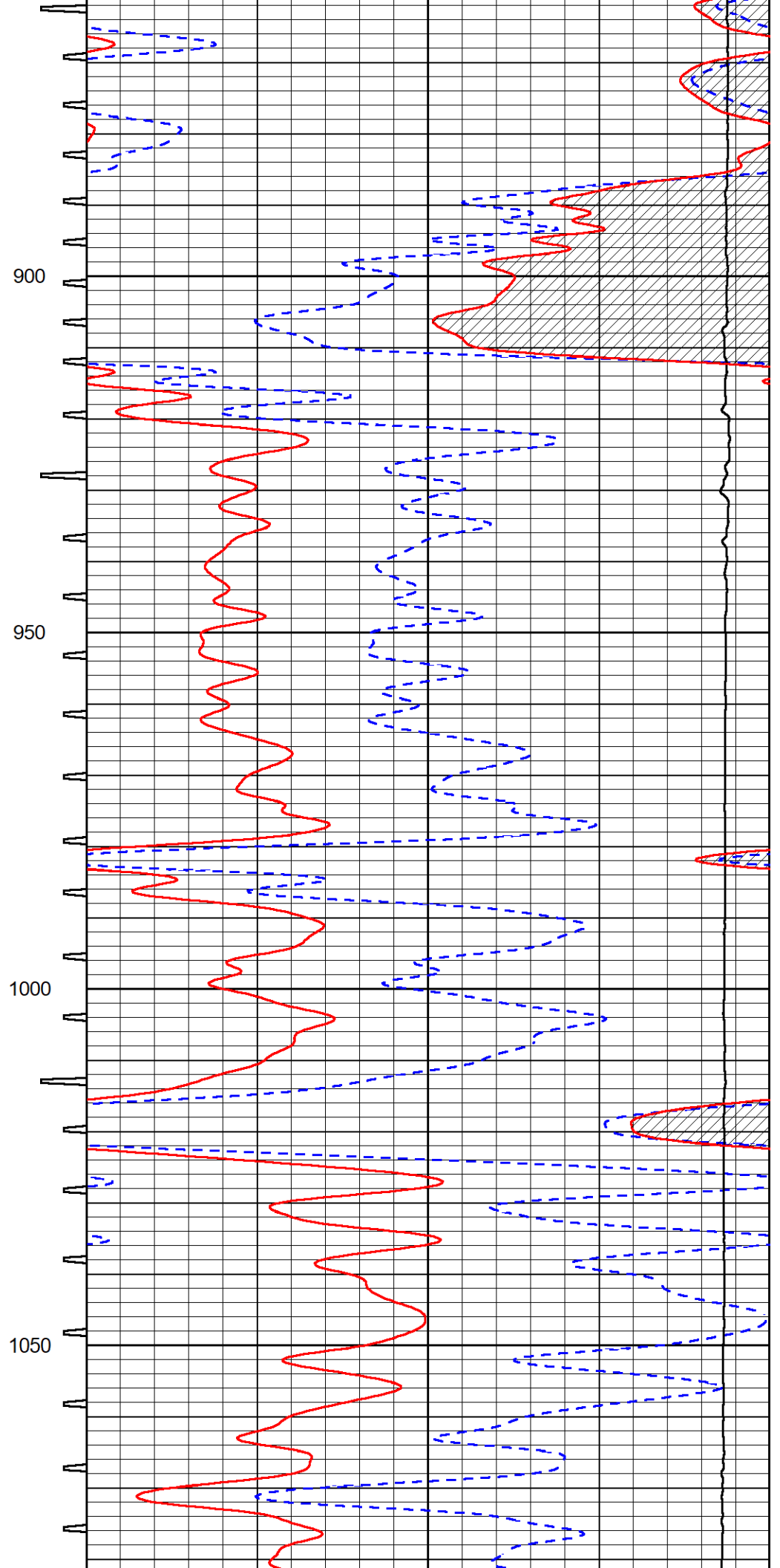
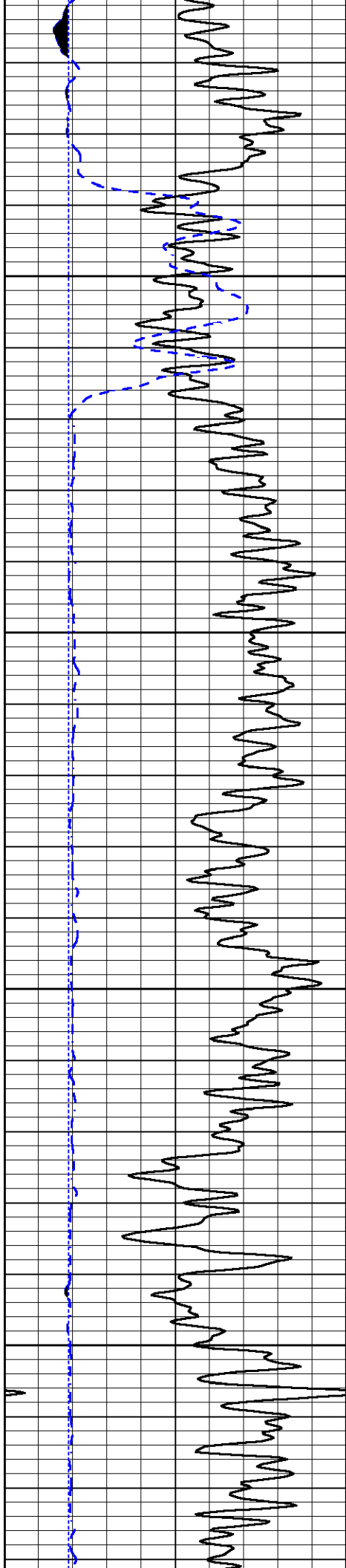
Database File griffin_reta 1.db
Dataset Pathname stkml/pass3.1
Presentation Format _sonic
Dataset Creation Wed Nov 01 02:38:22 2023
Charted by Depth in Feet scaled 1:240

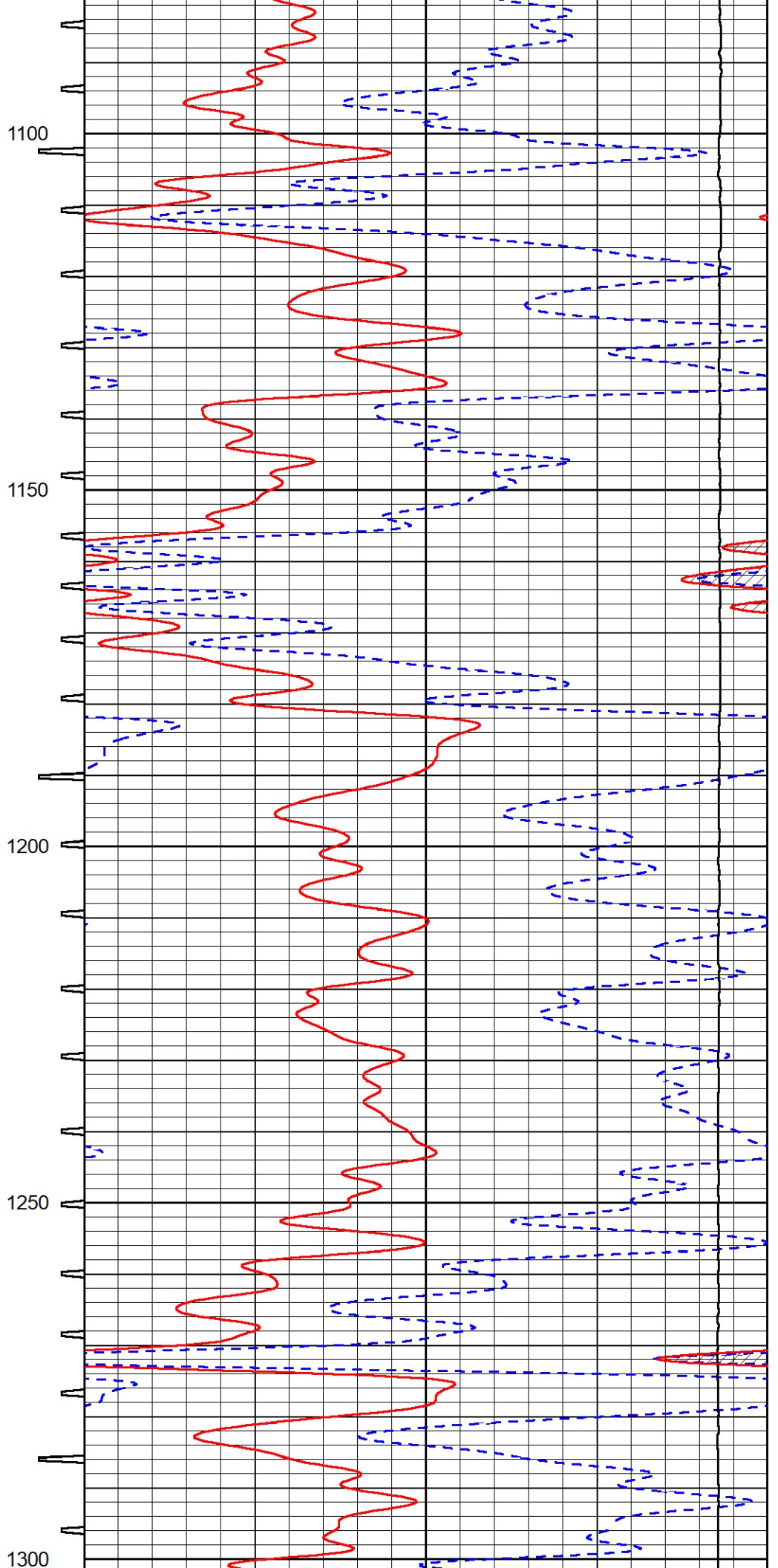
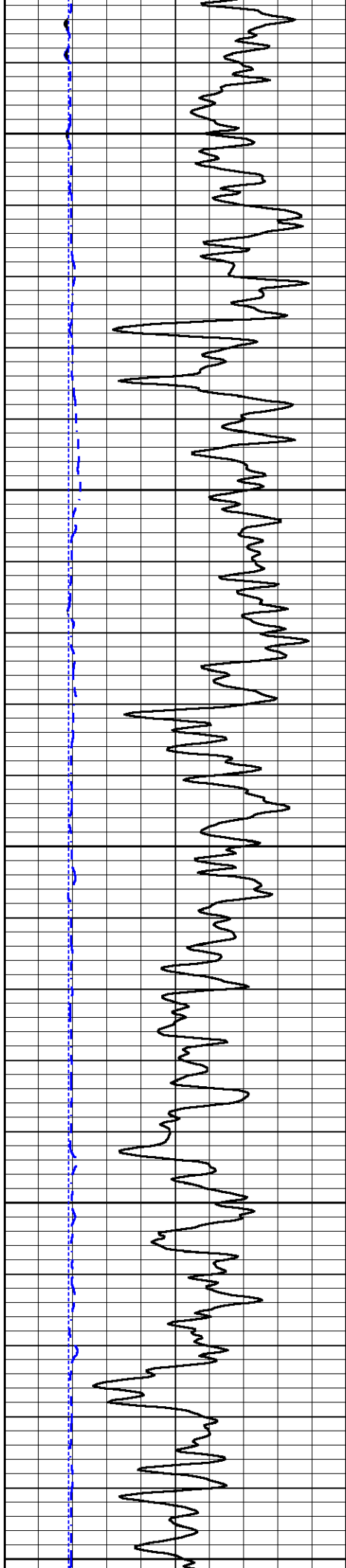
0	Gamma Ray (GAPI)	150	Sonic Int	140	Delta Time (usec/ft) (usec/ft)	40
150	GR (GAPI)	300	5 (msec) 0	30	Sonic Porosity (pu) (pu)	-10
6	LCAL (in)	16		15000	Line Tension (lb)	0

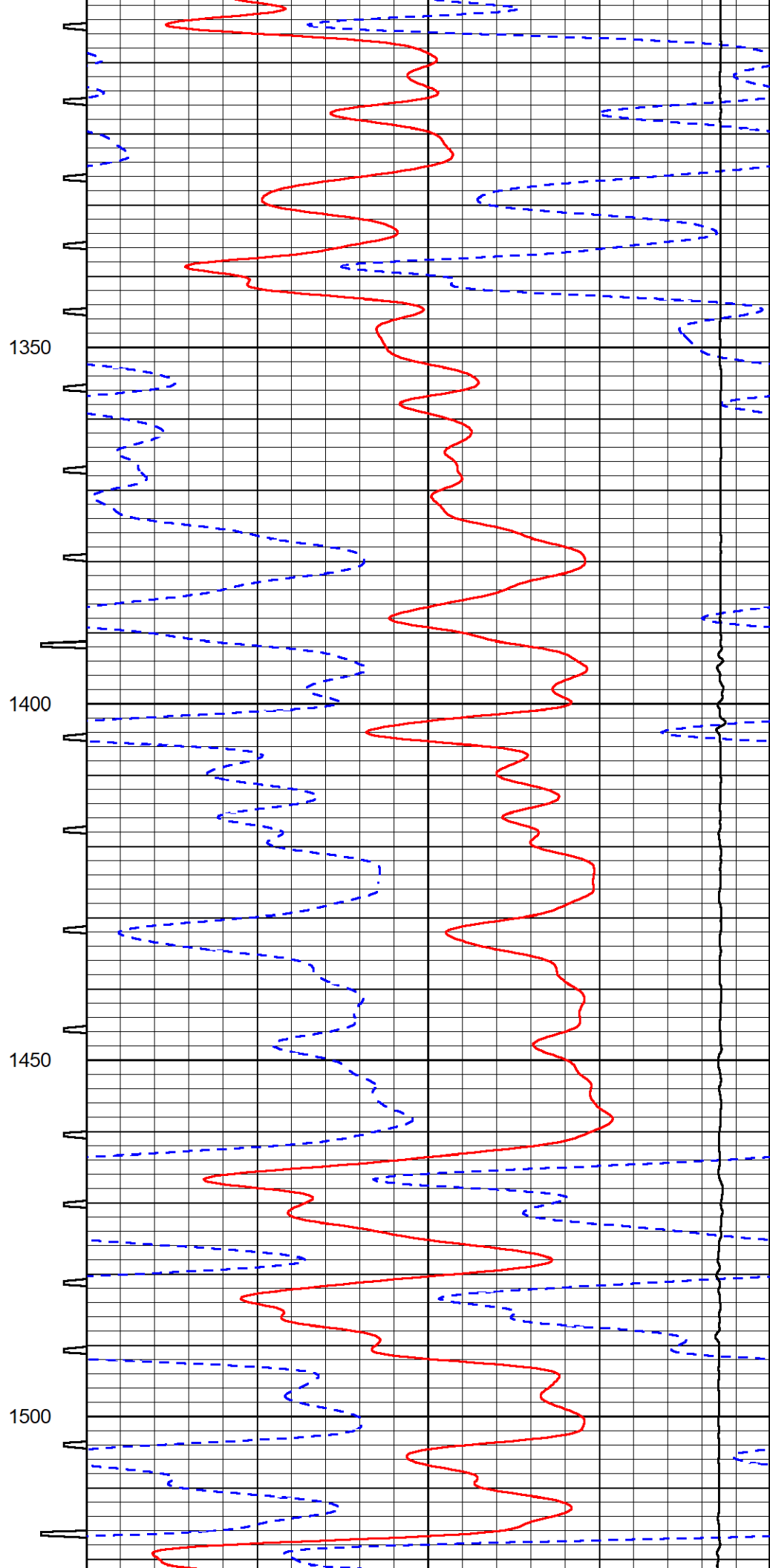
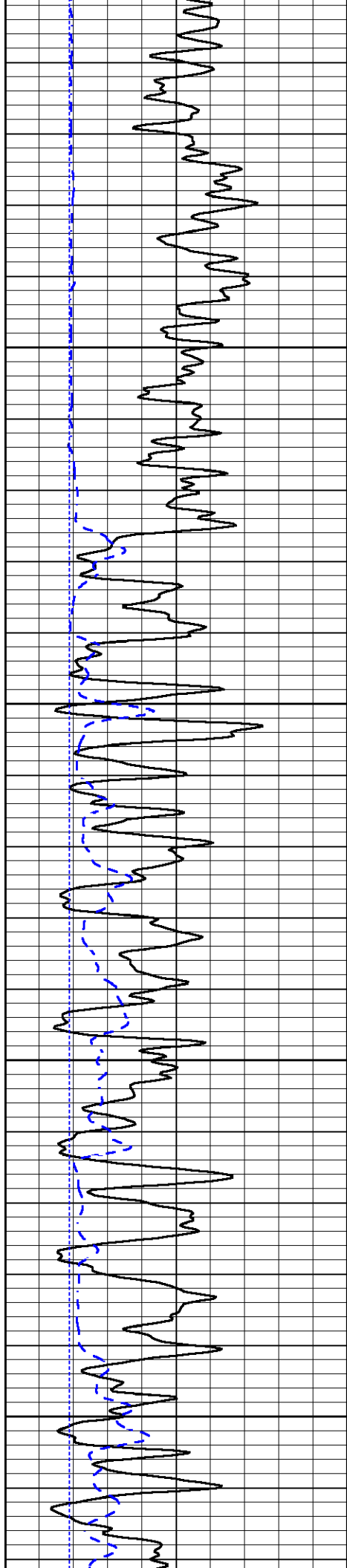


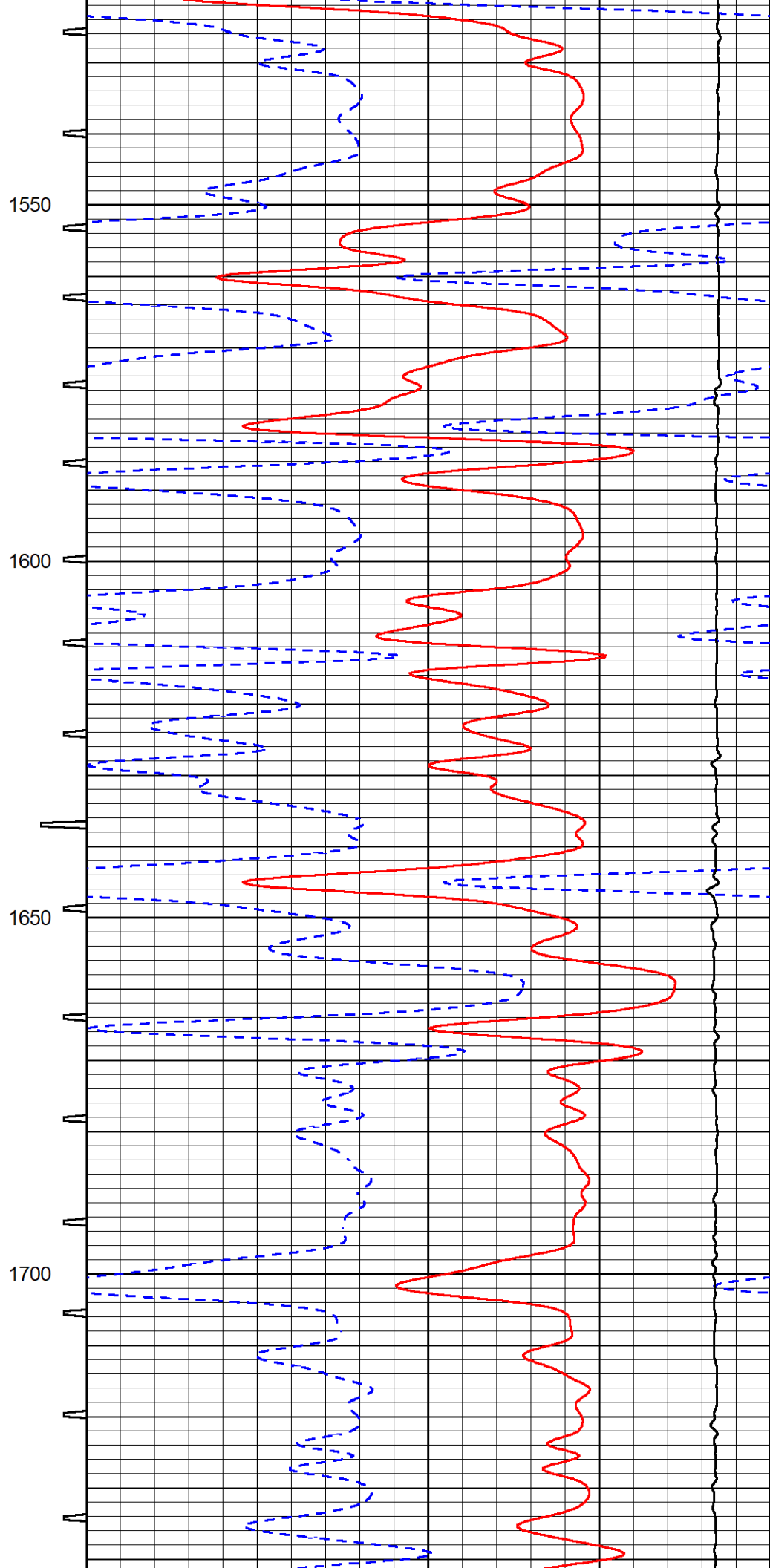
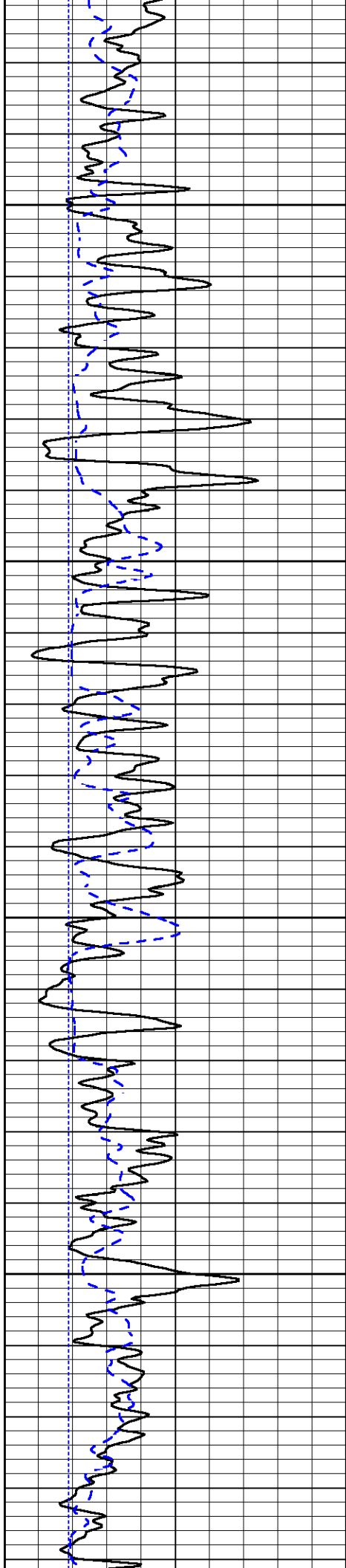


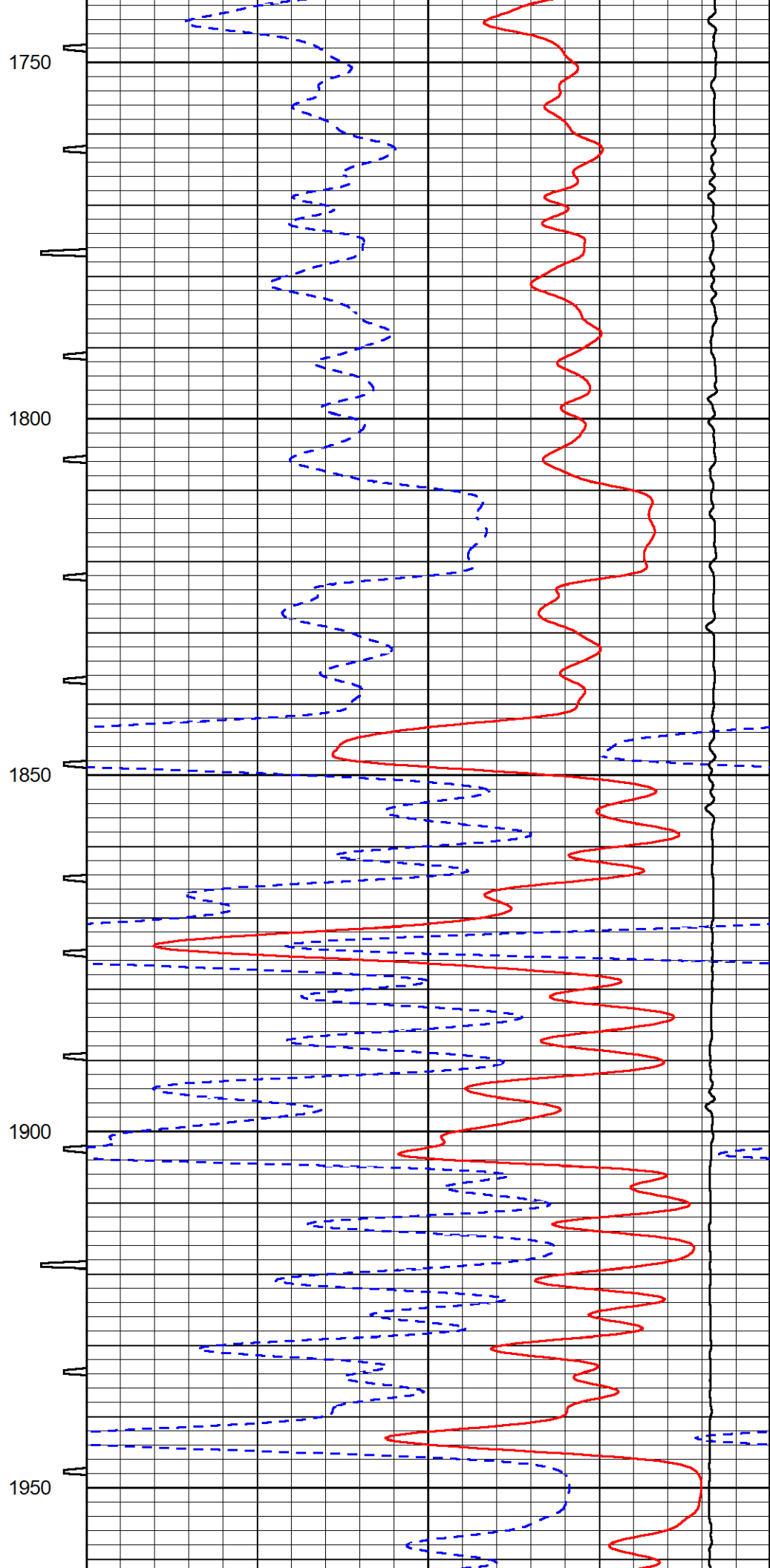
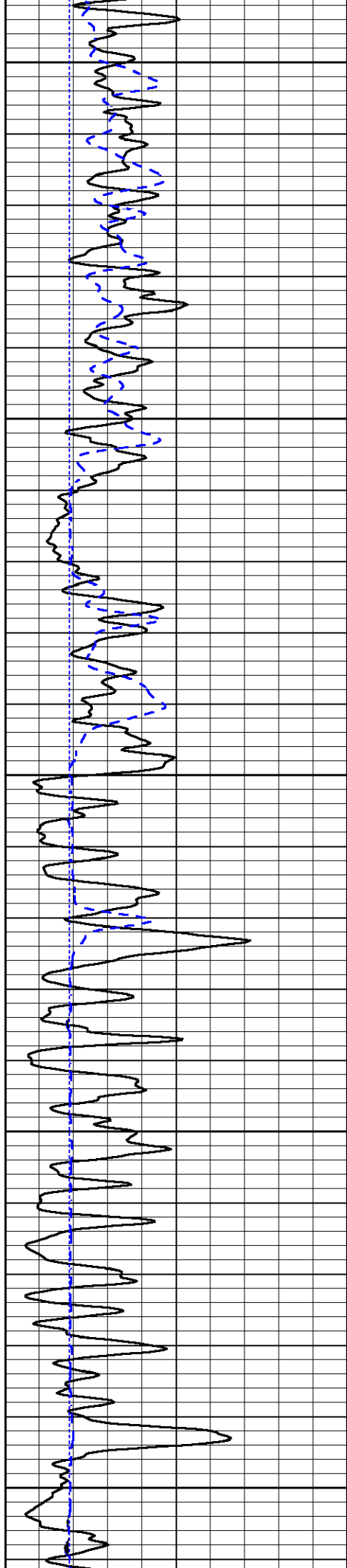


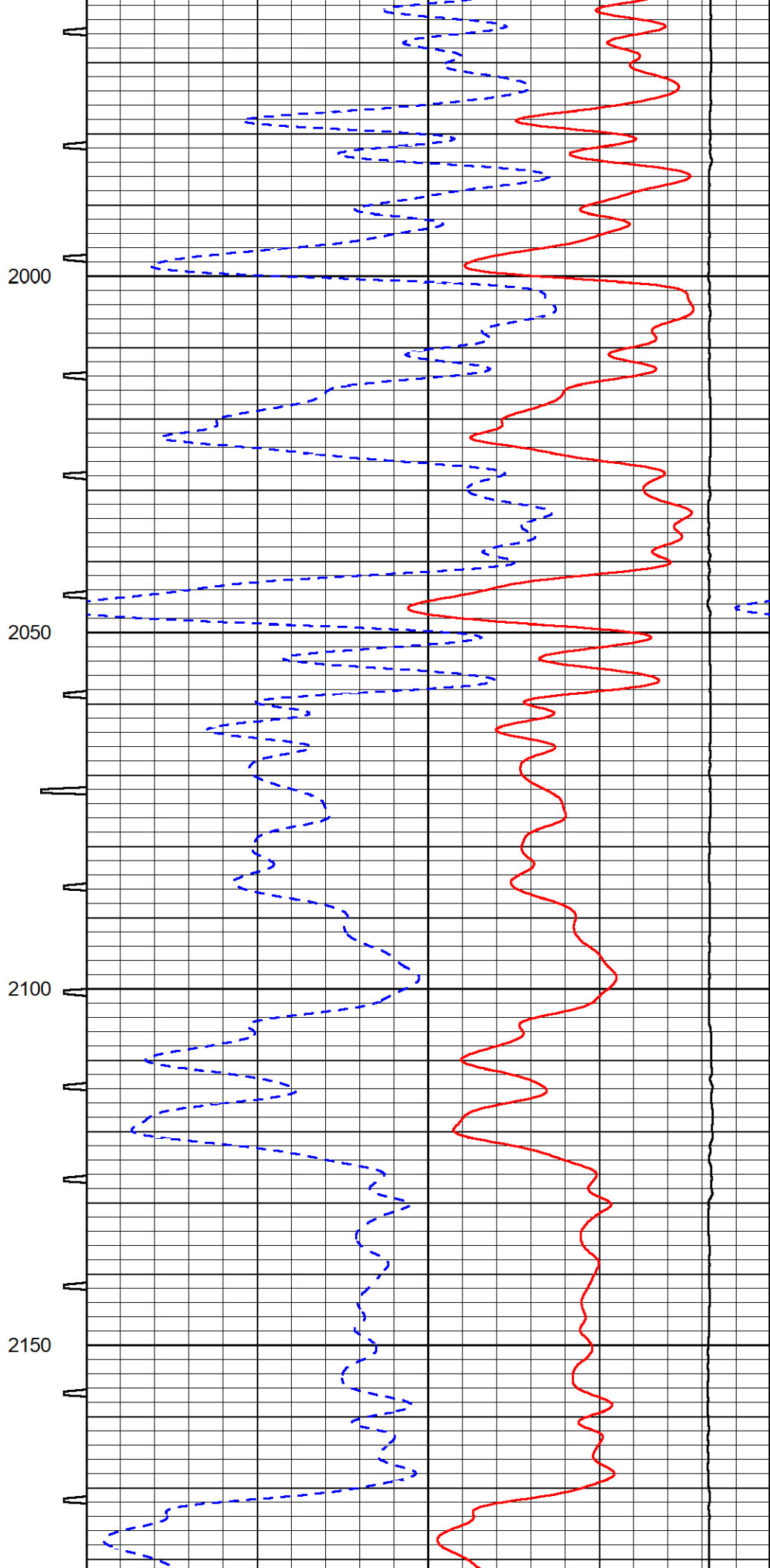
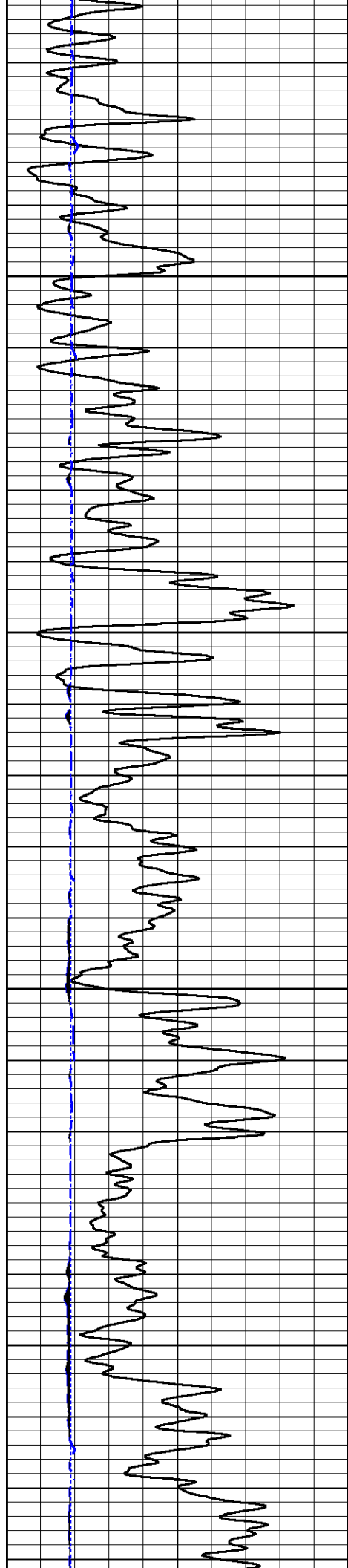


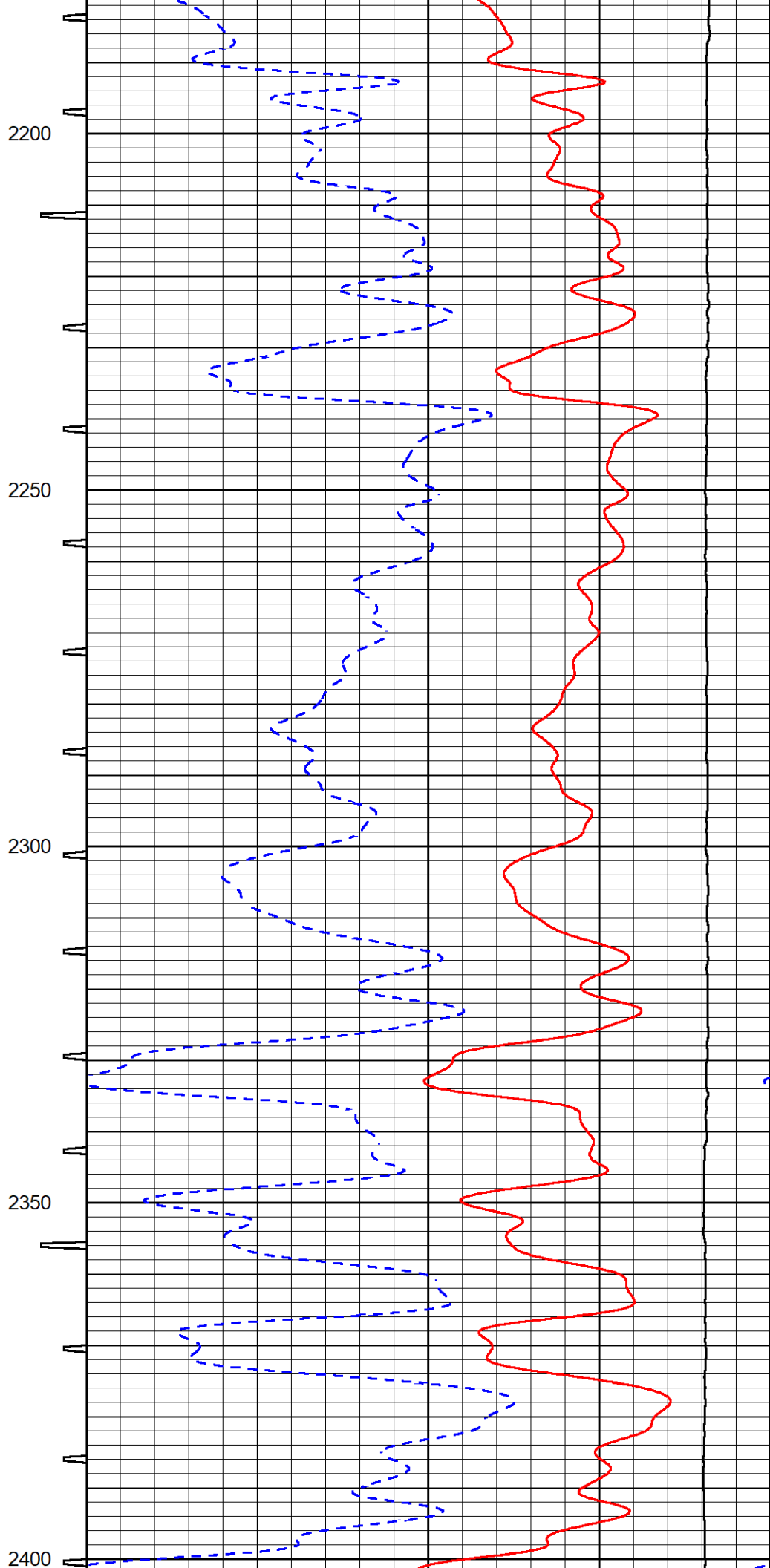
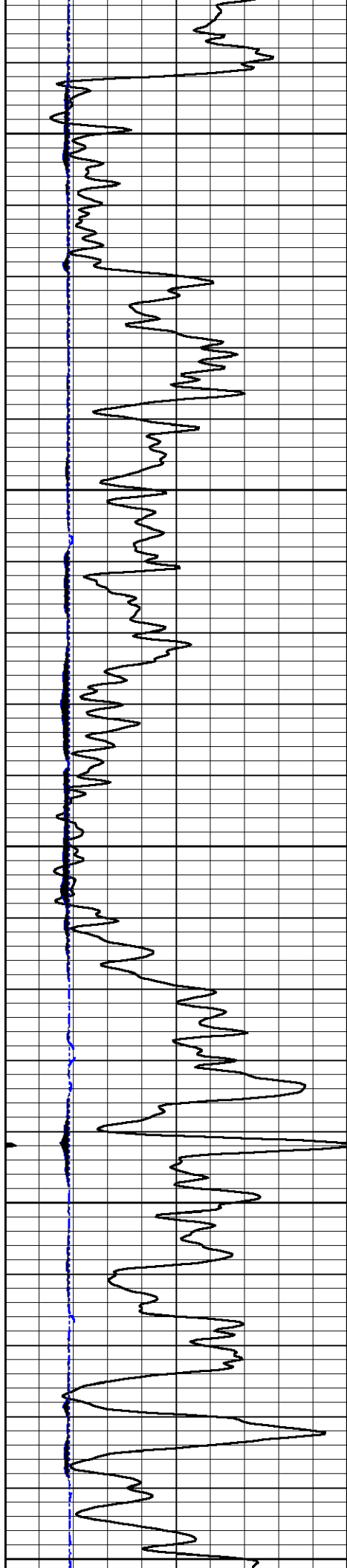


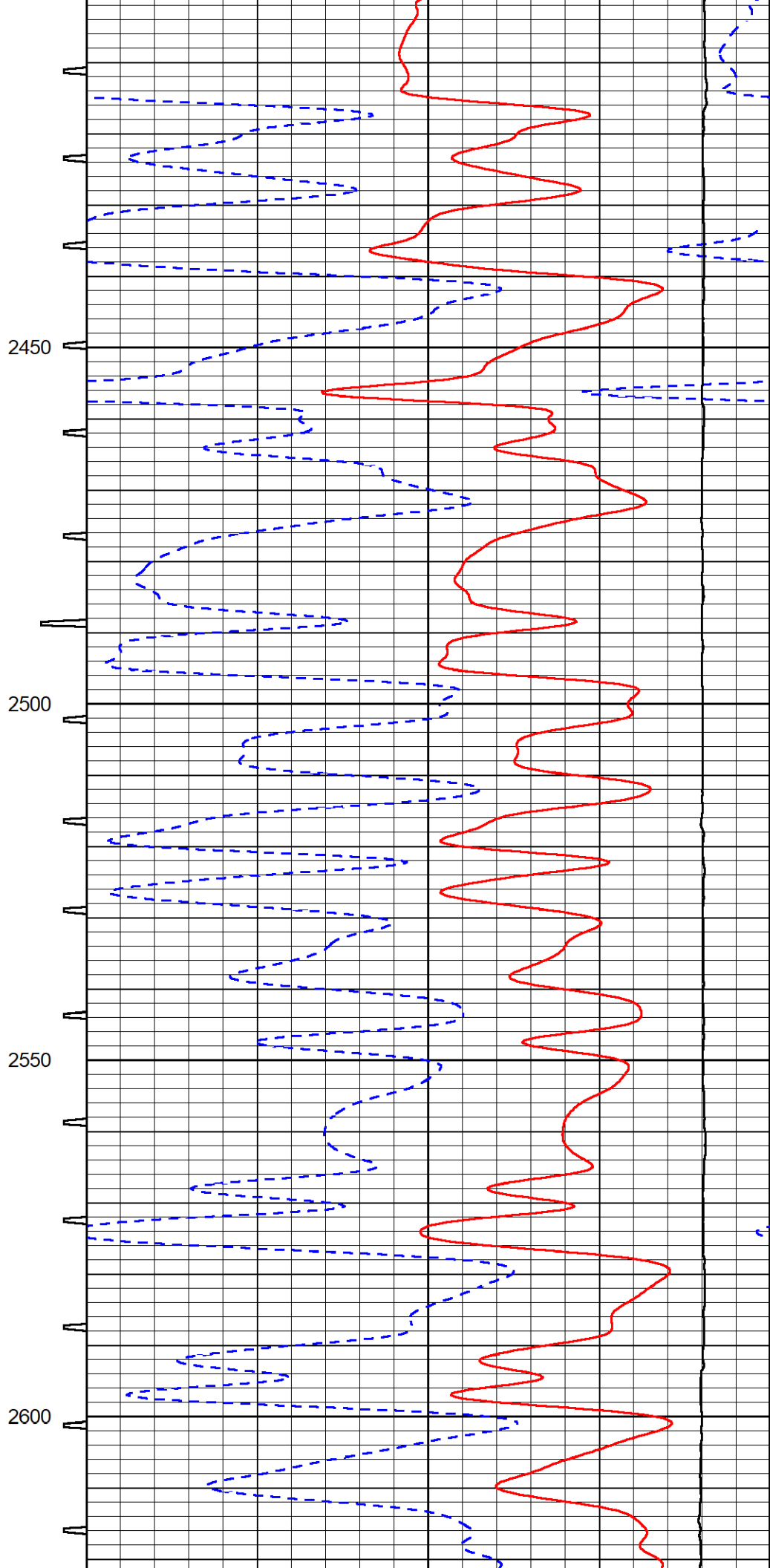
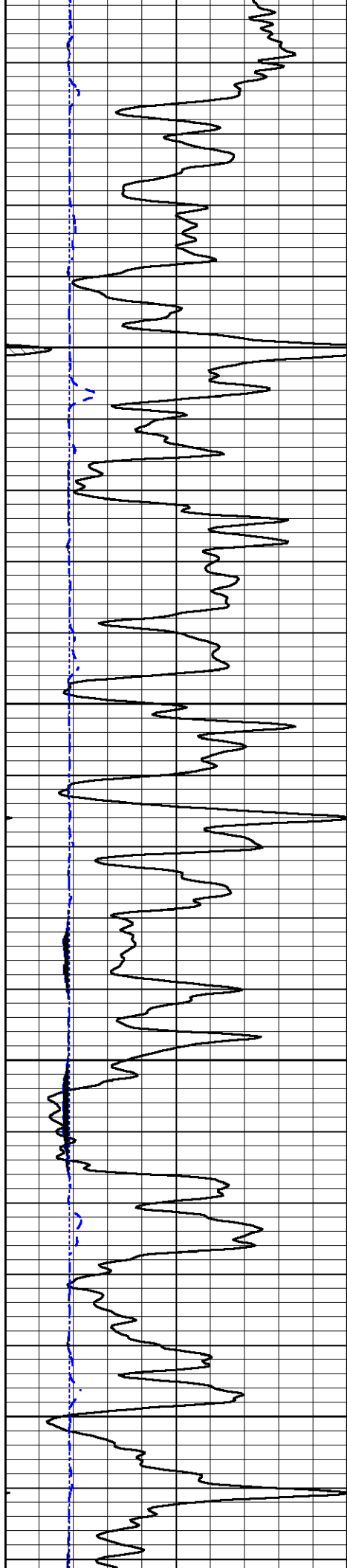


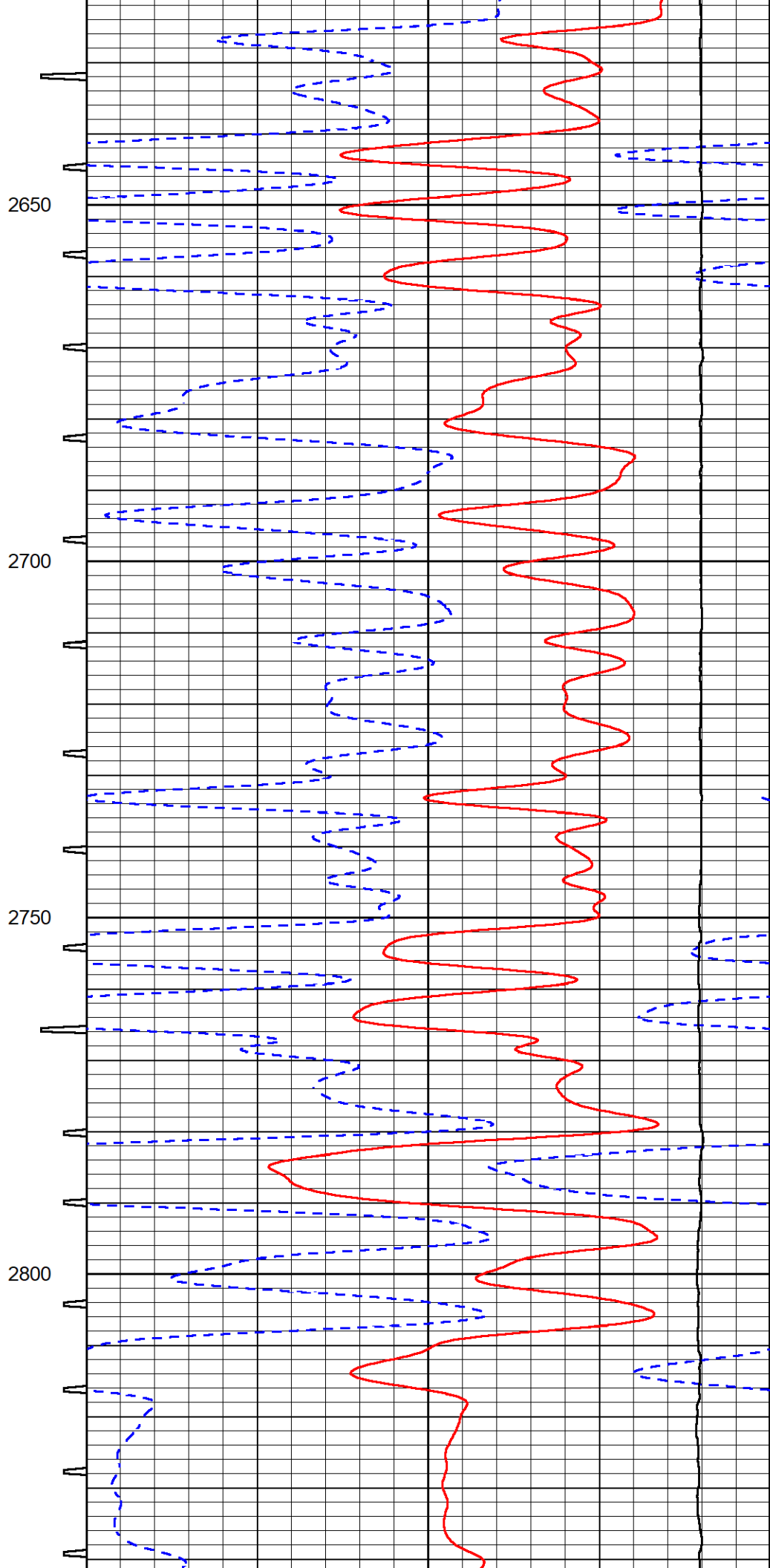
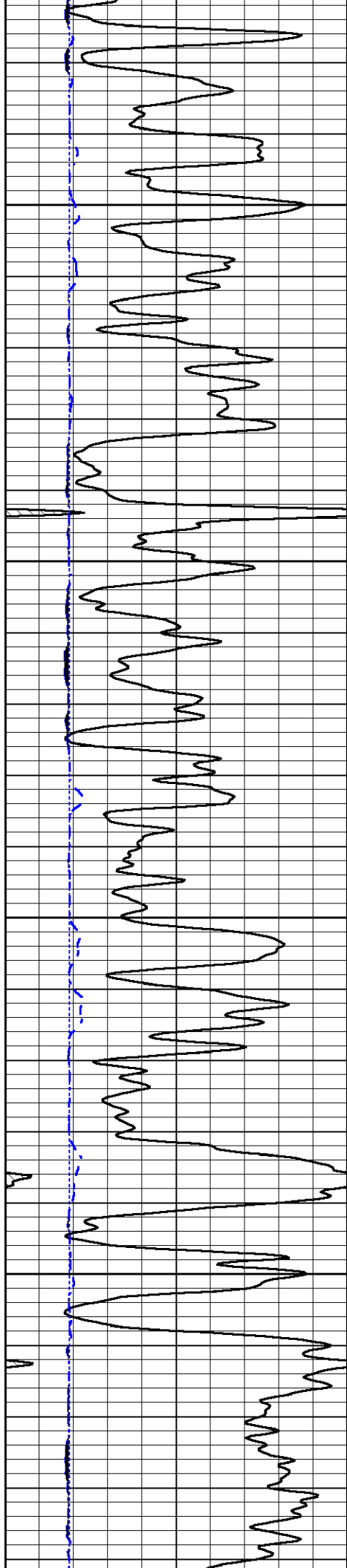


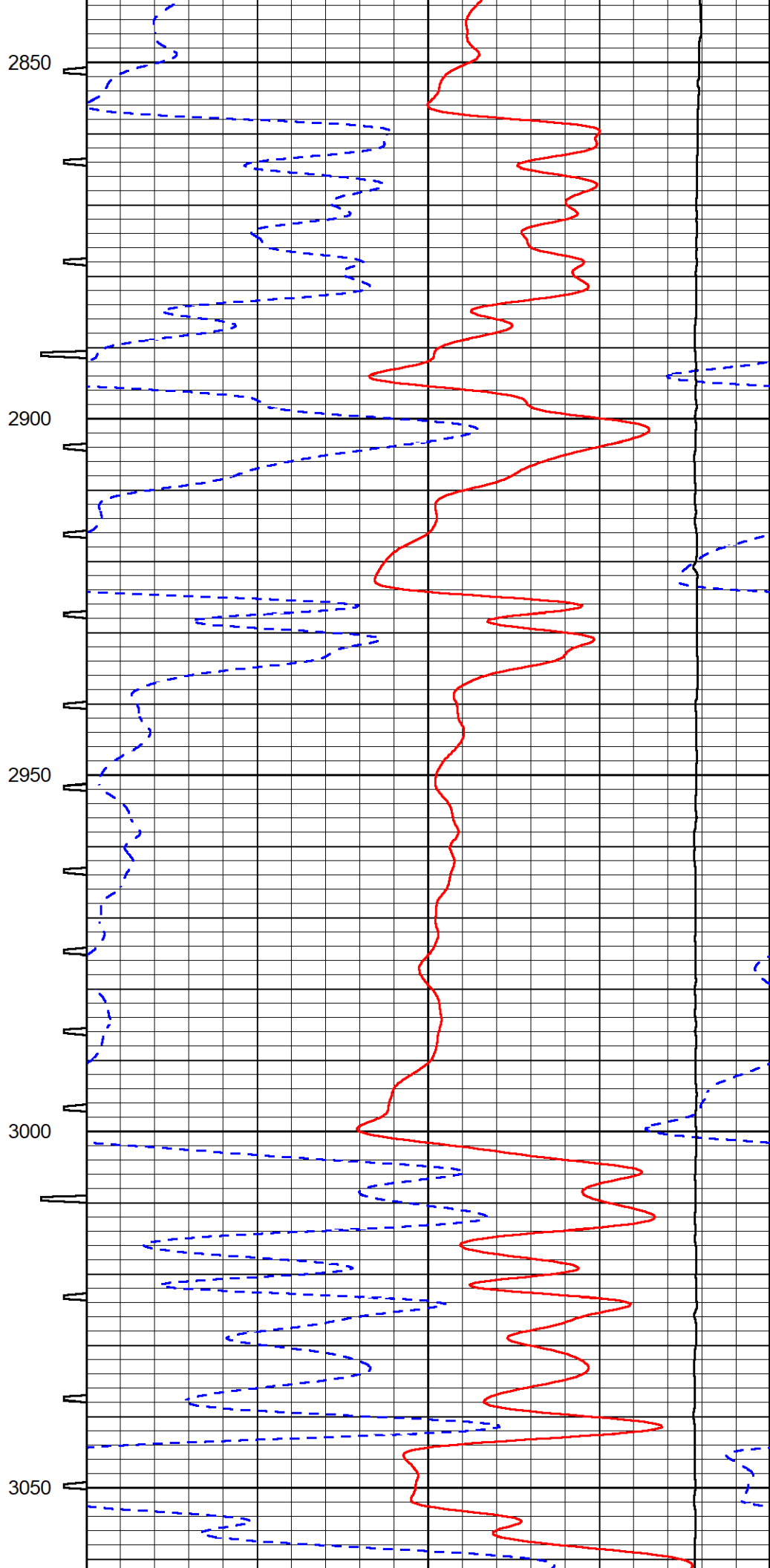
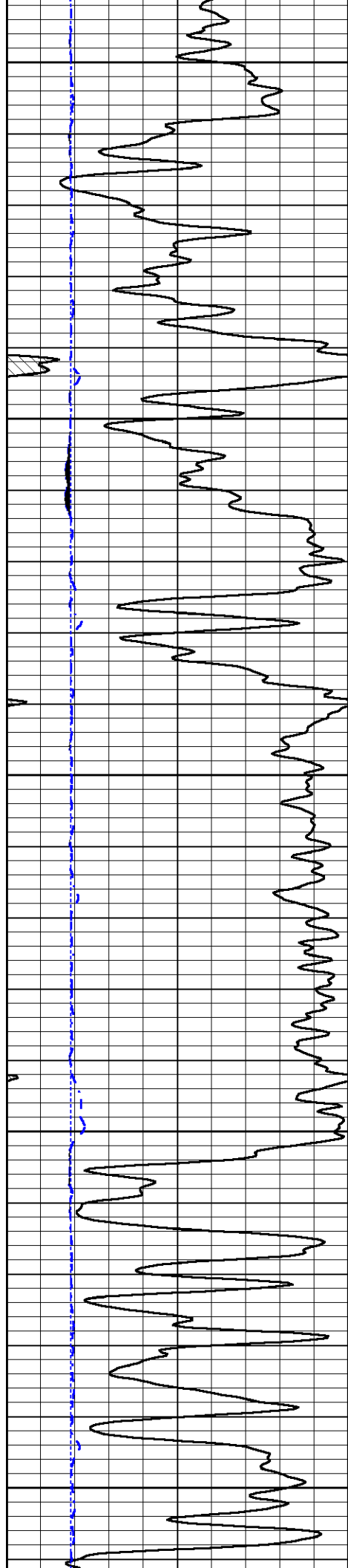


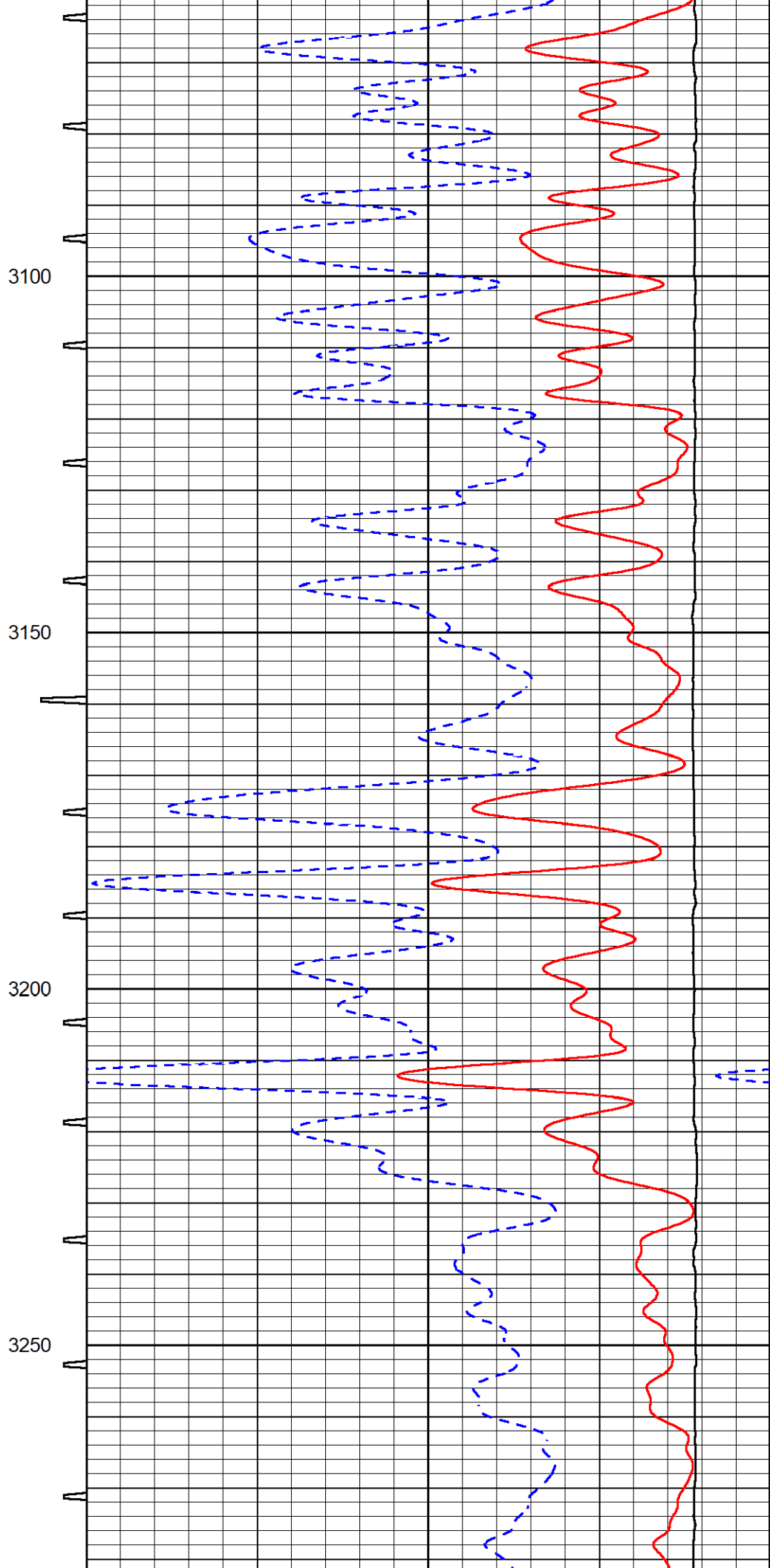
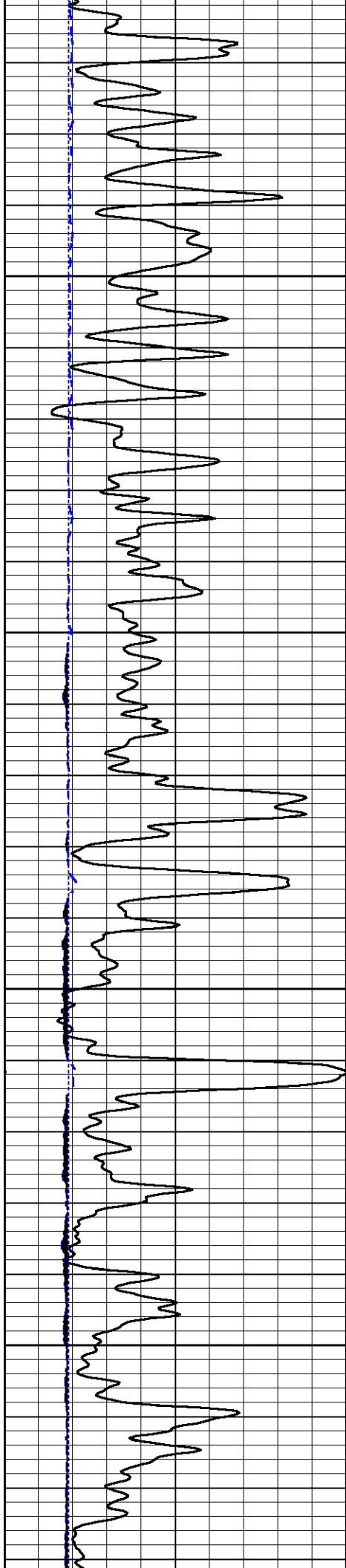


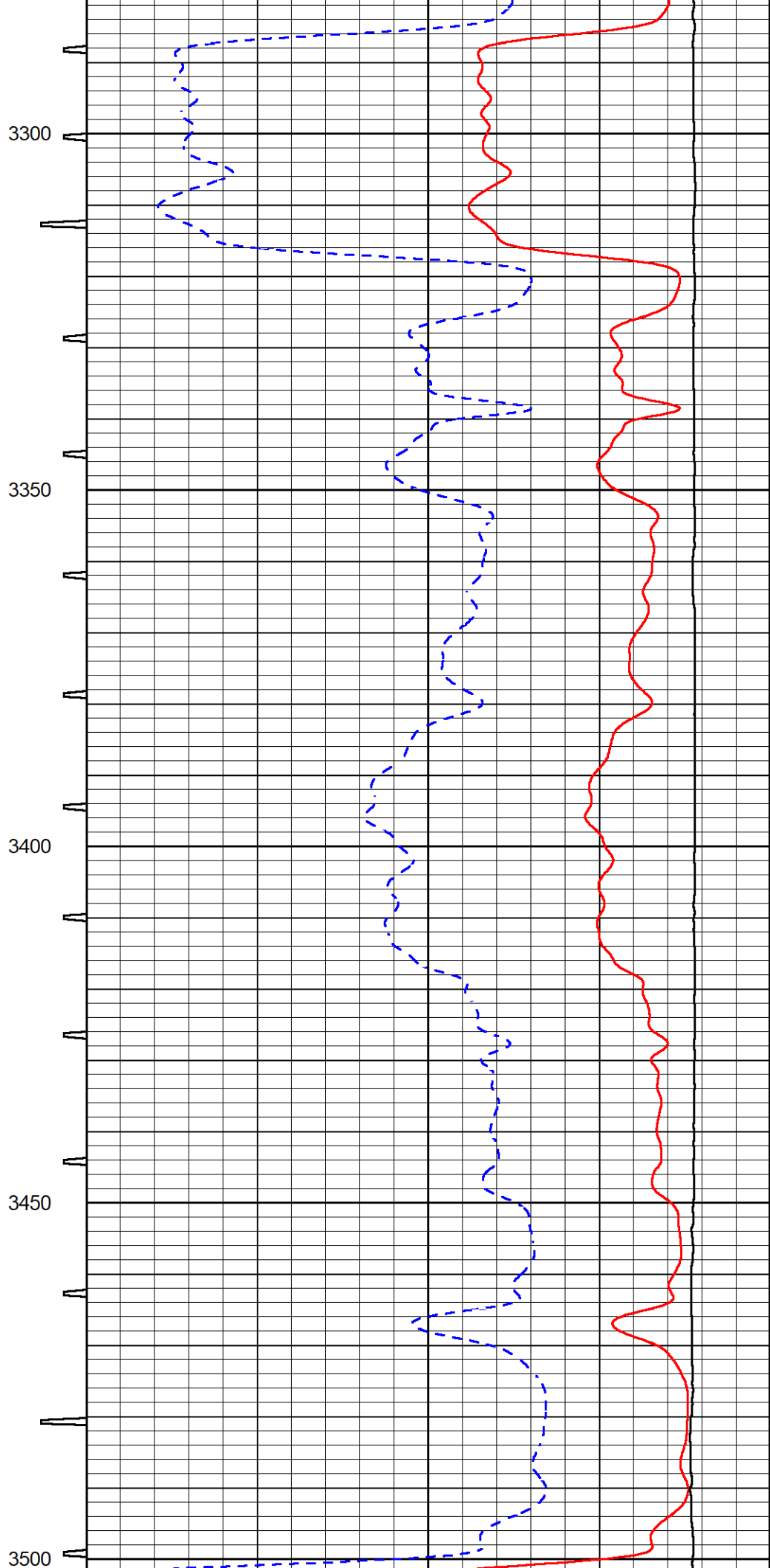
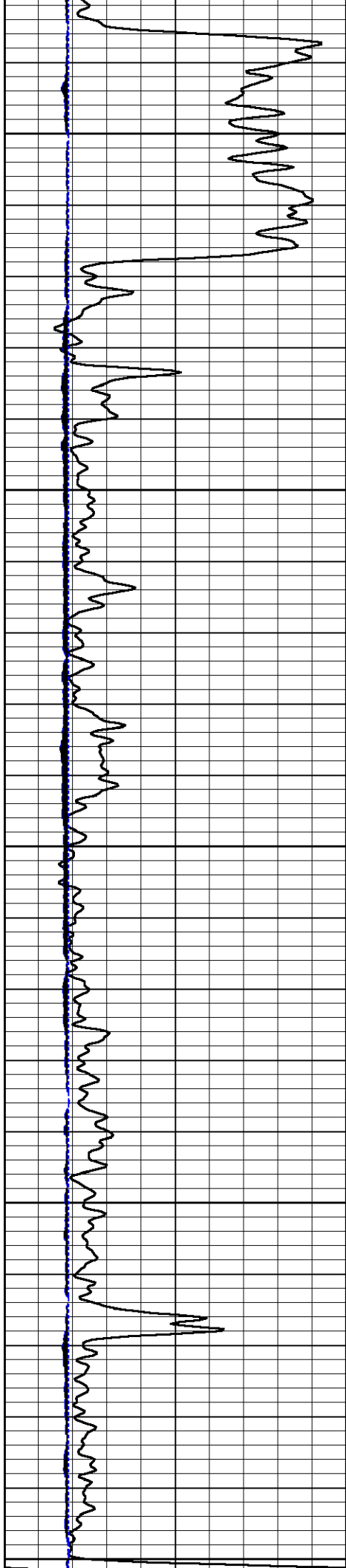


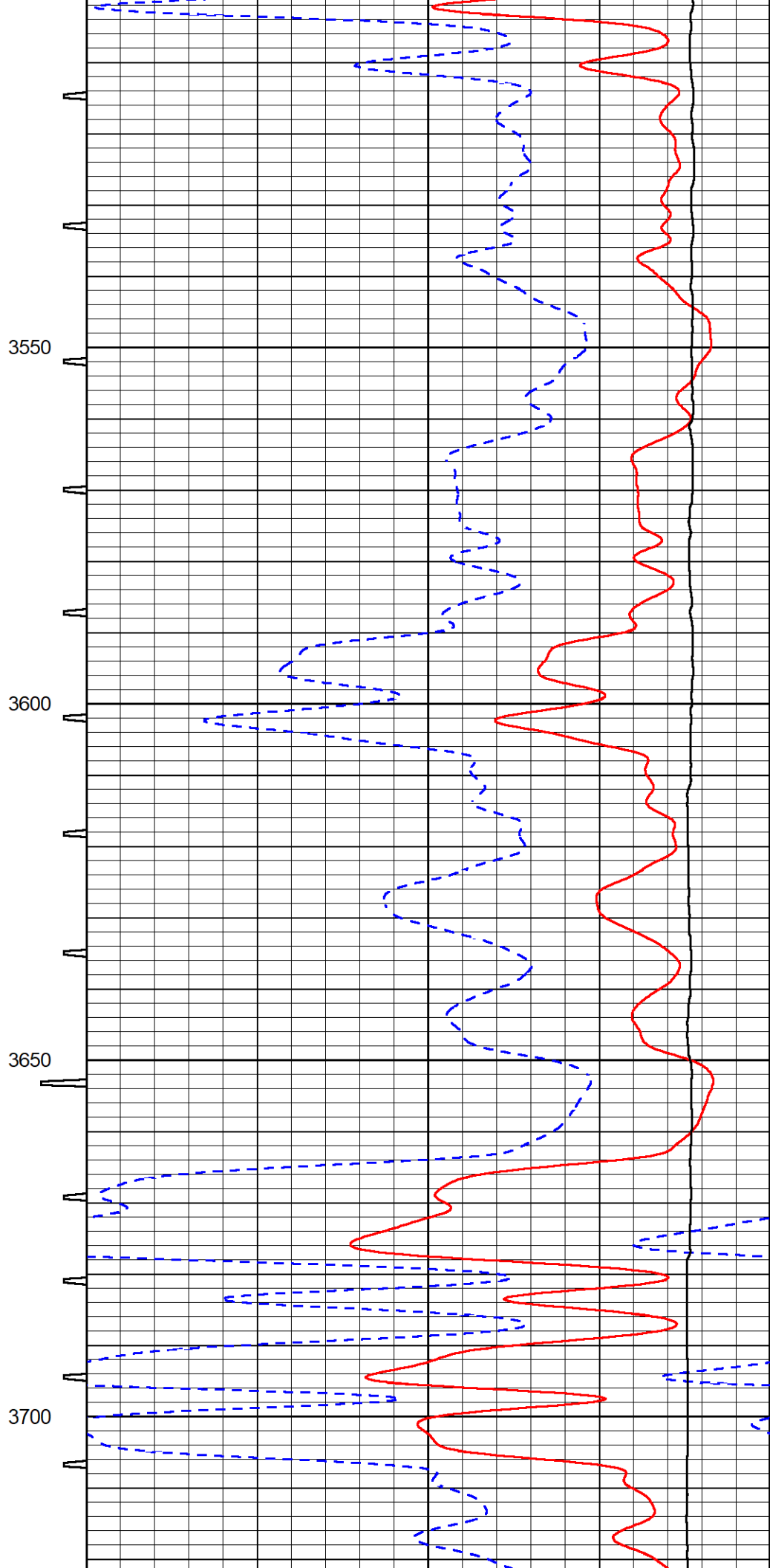
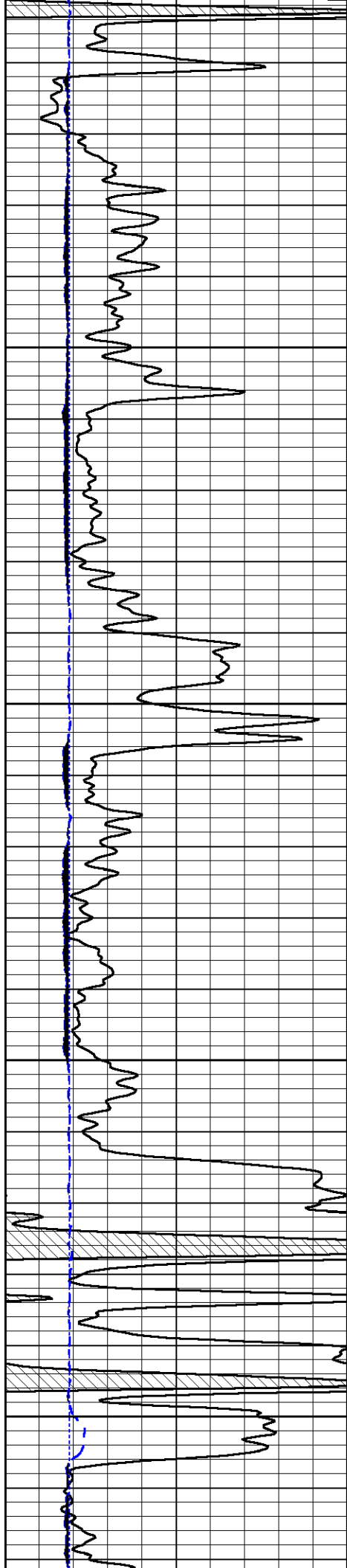


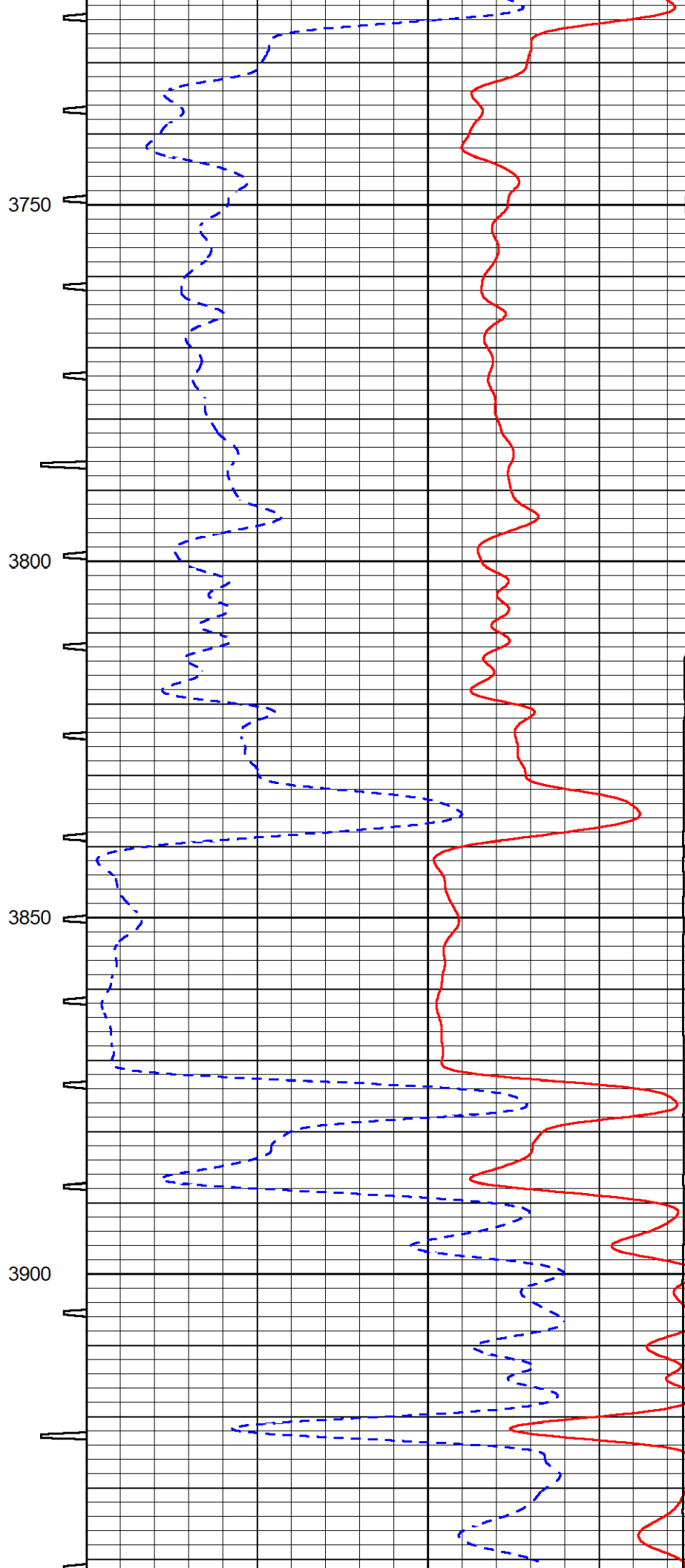
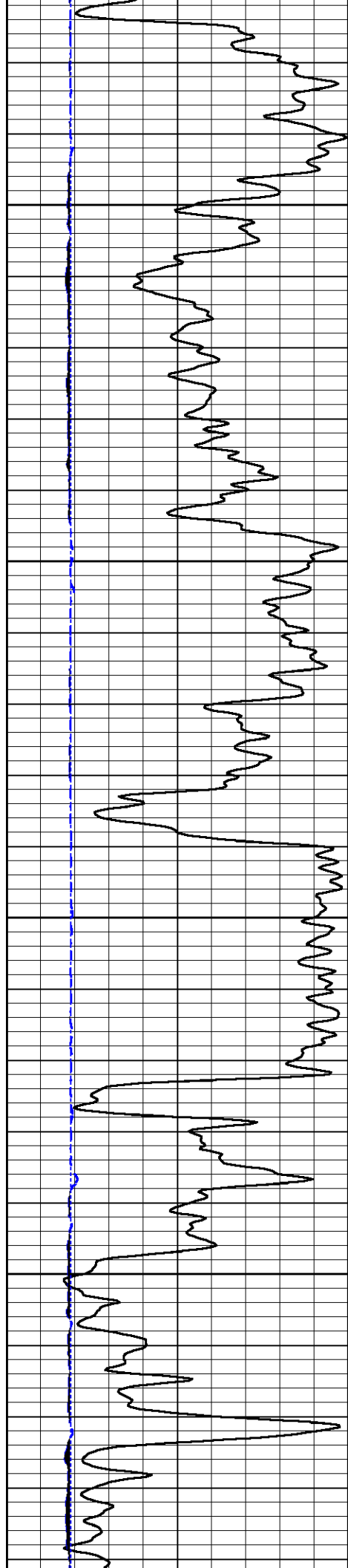














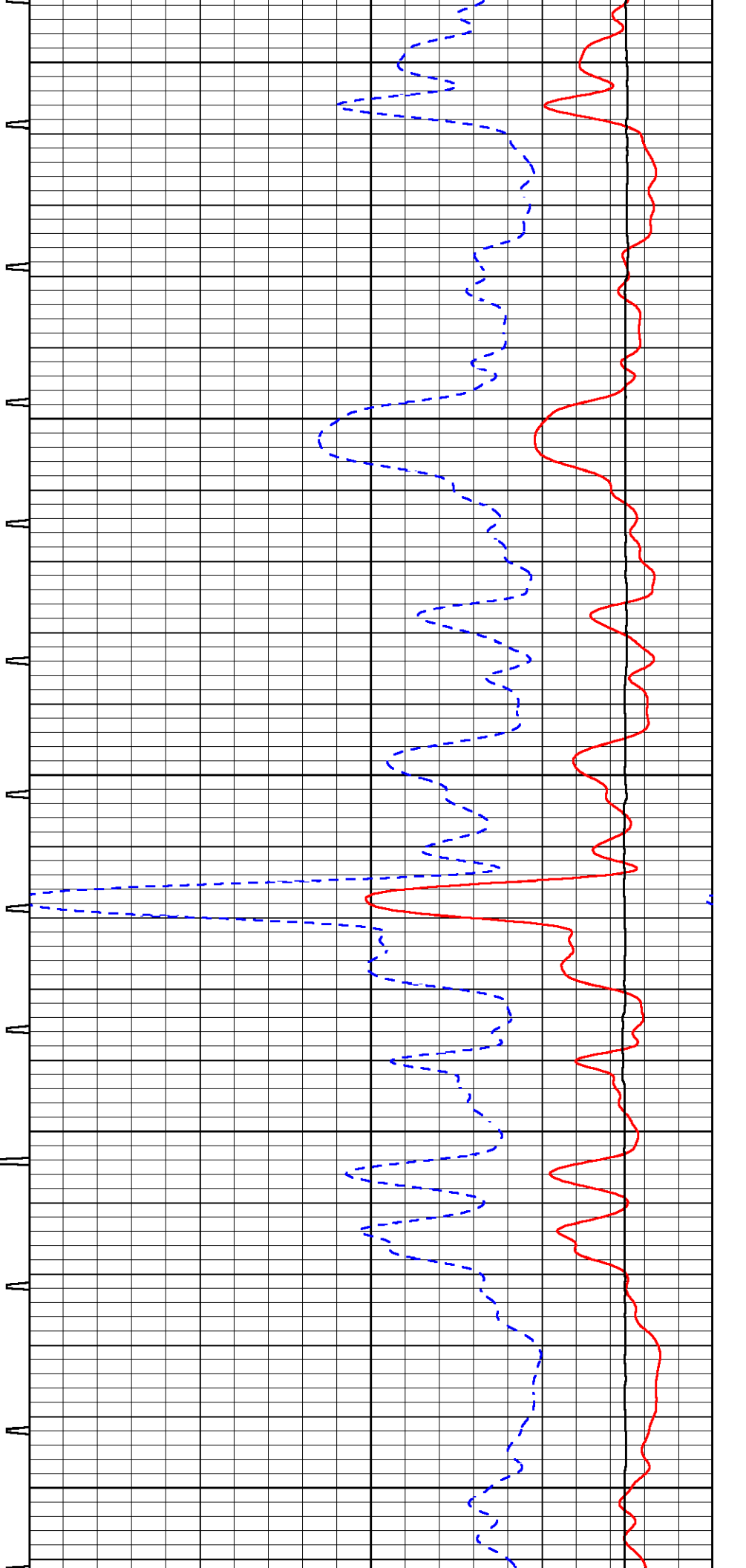
3950

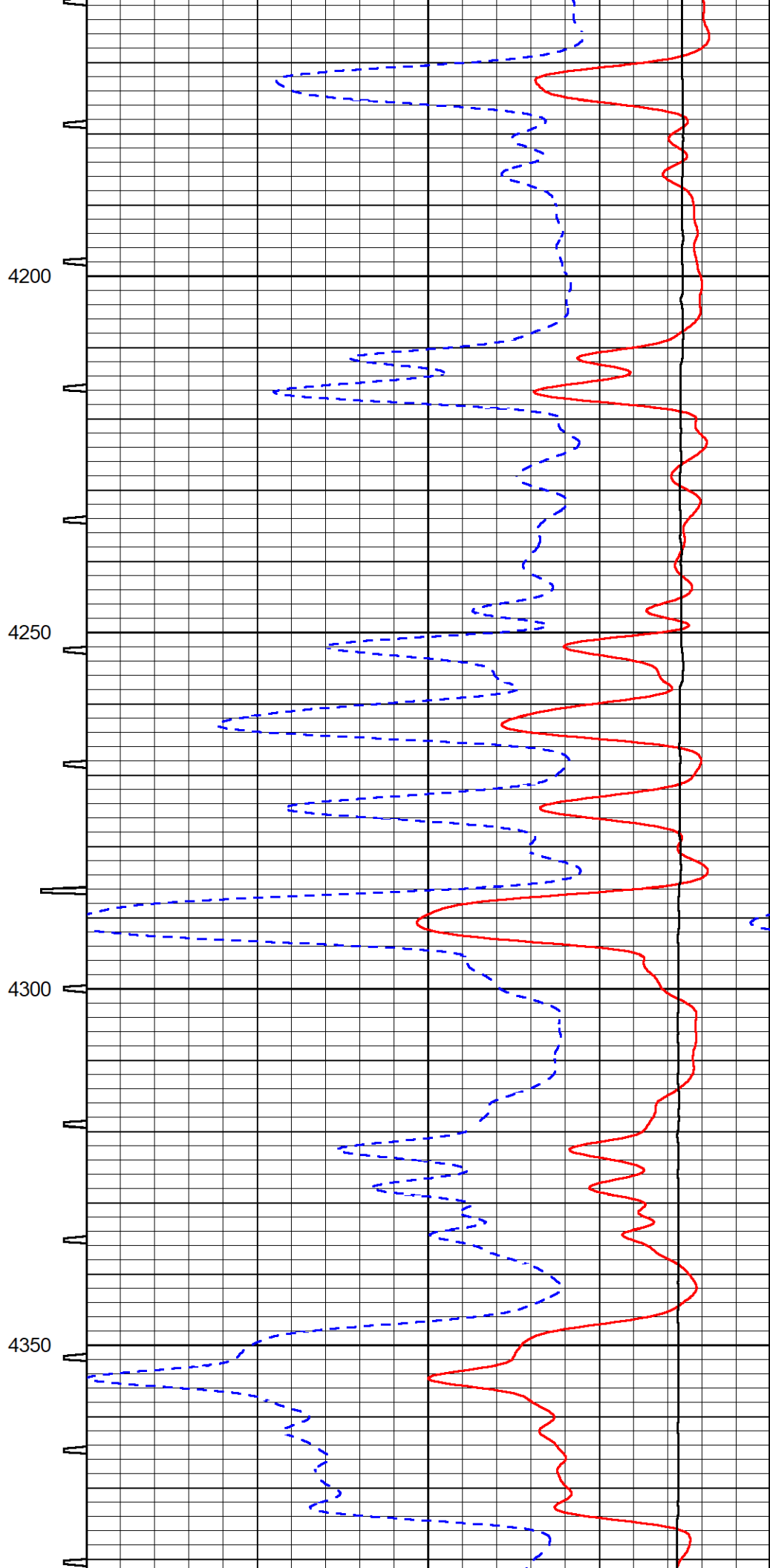
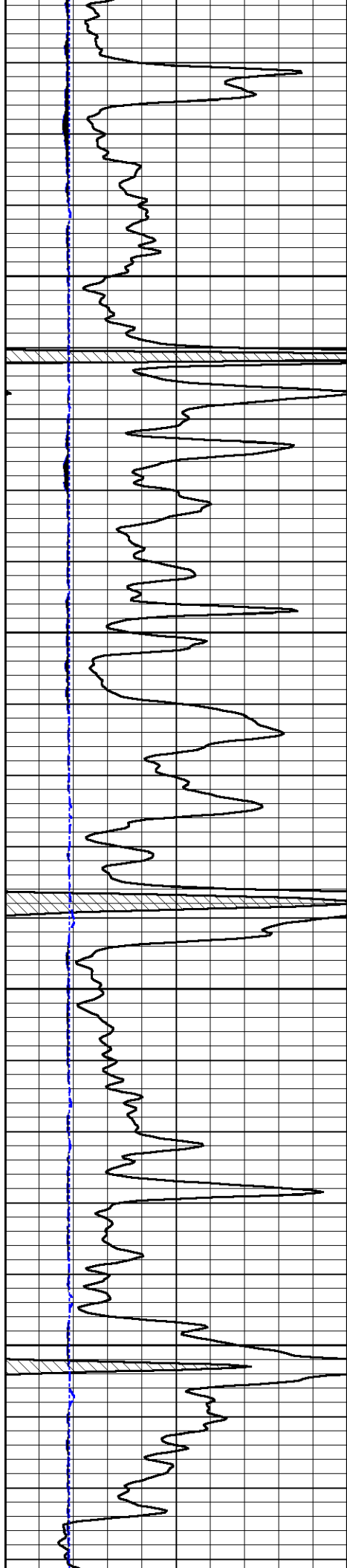
4000

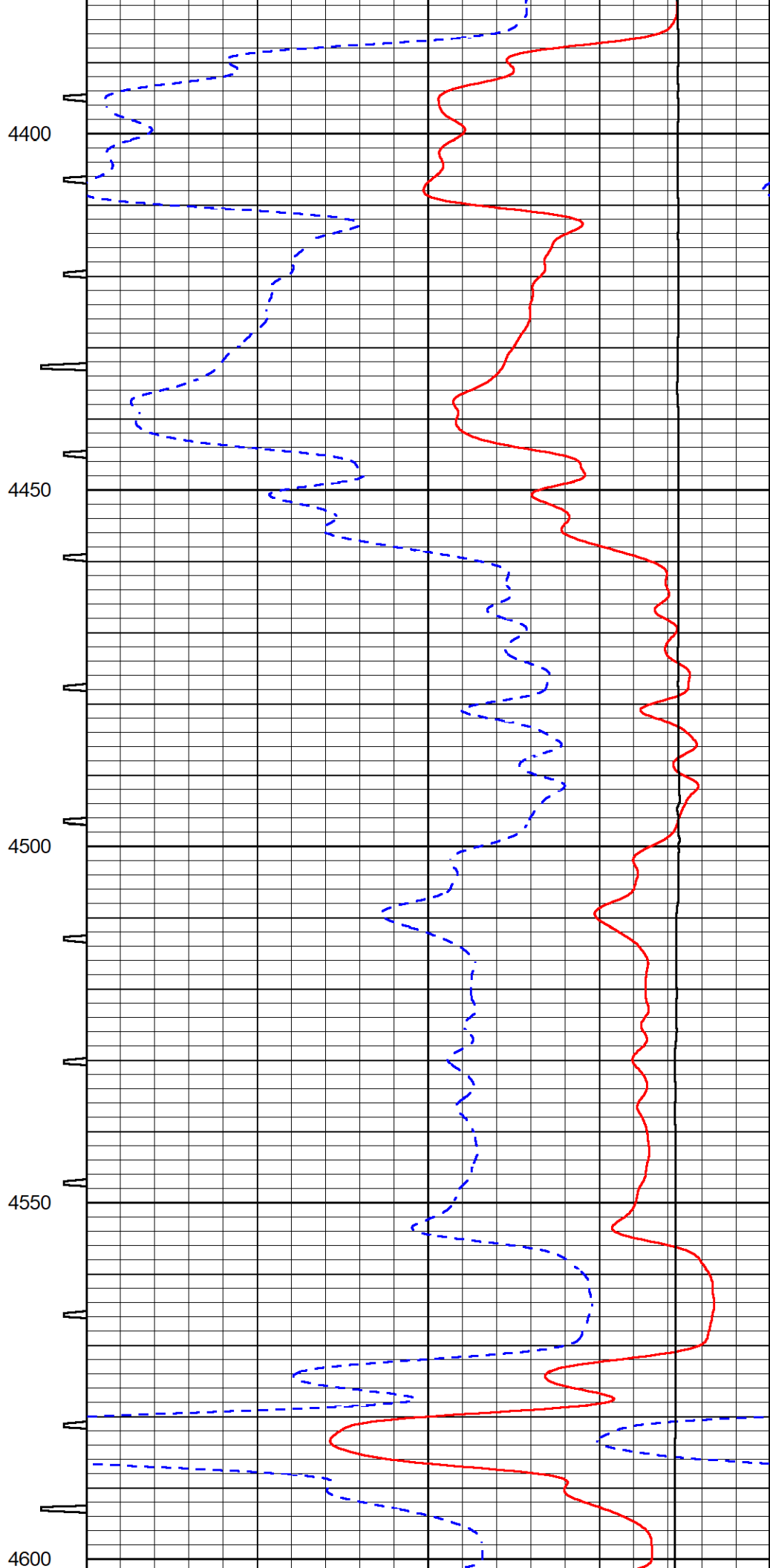
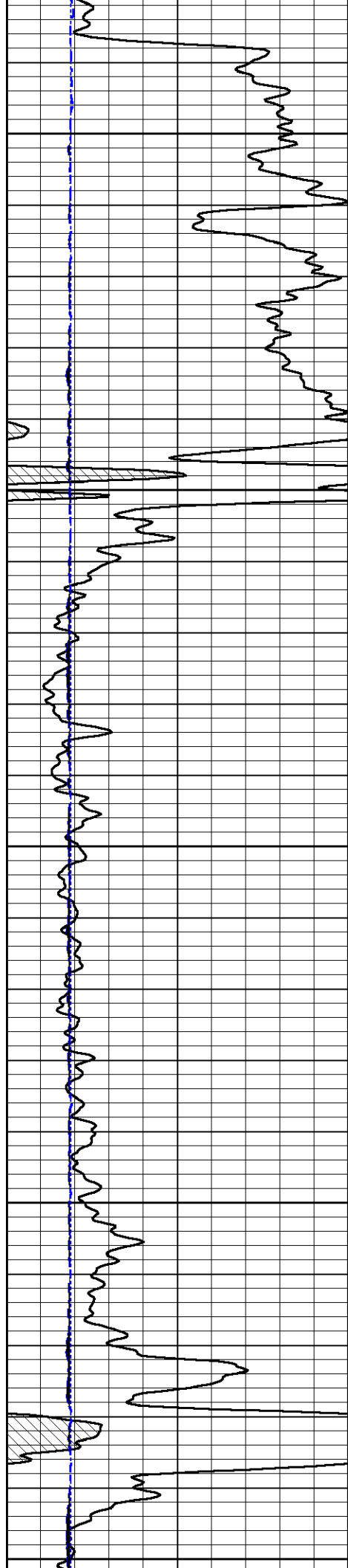
4050

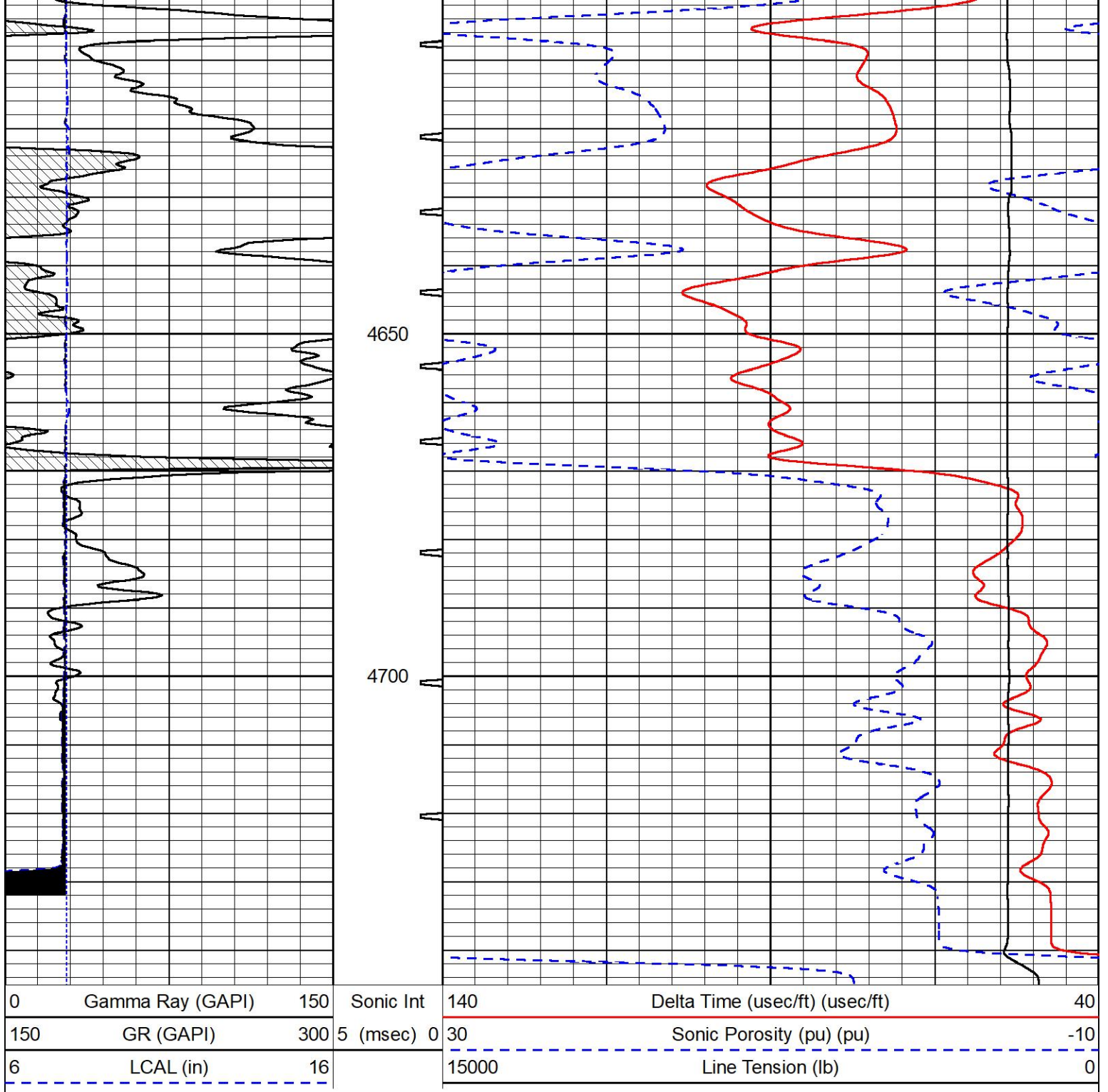
4100

4150









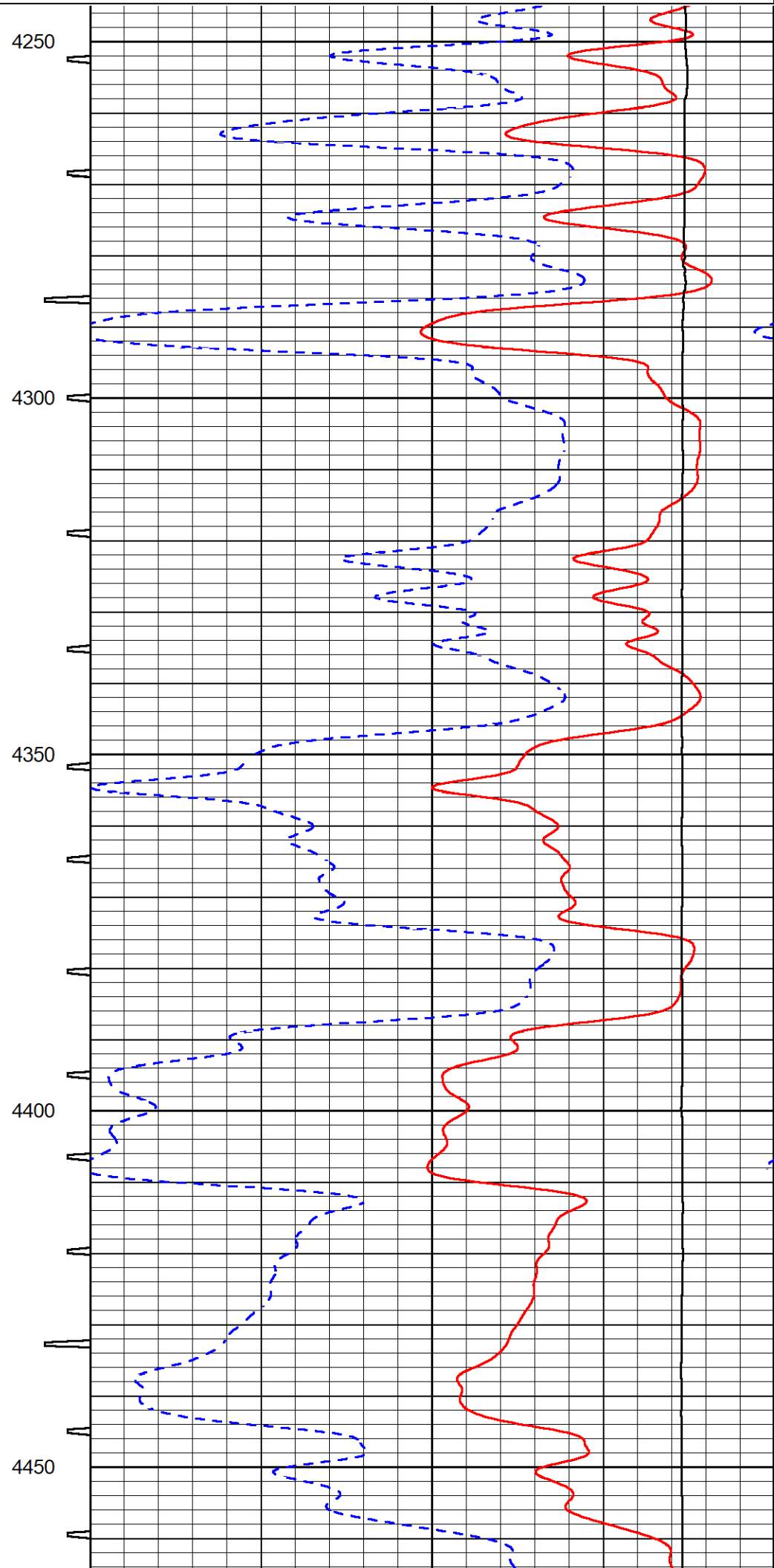
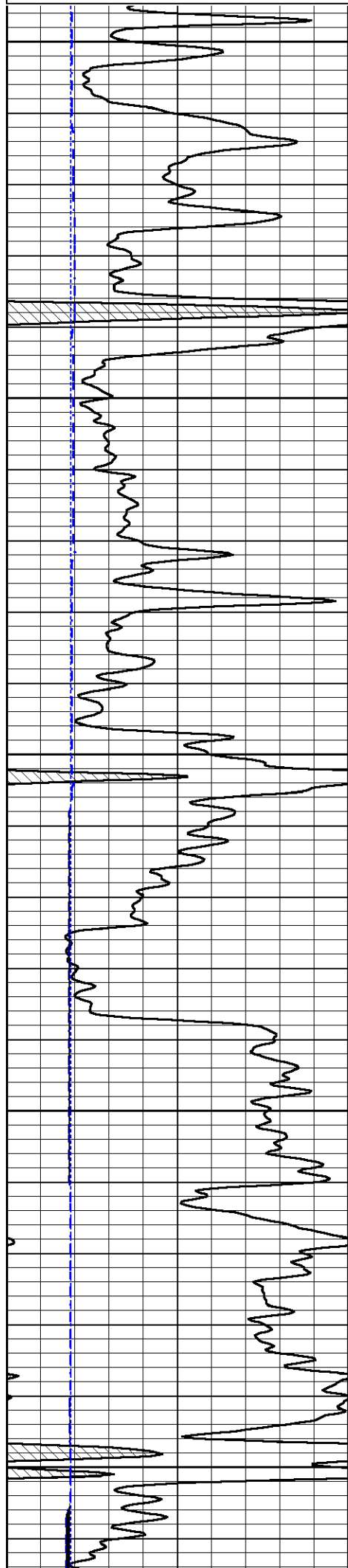
MIDWEST WIRELINE

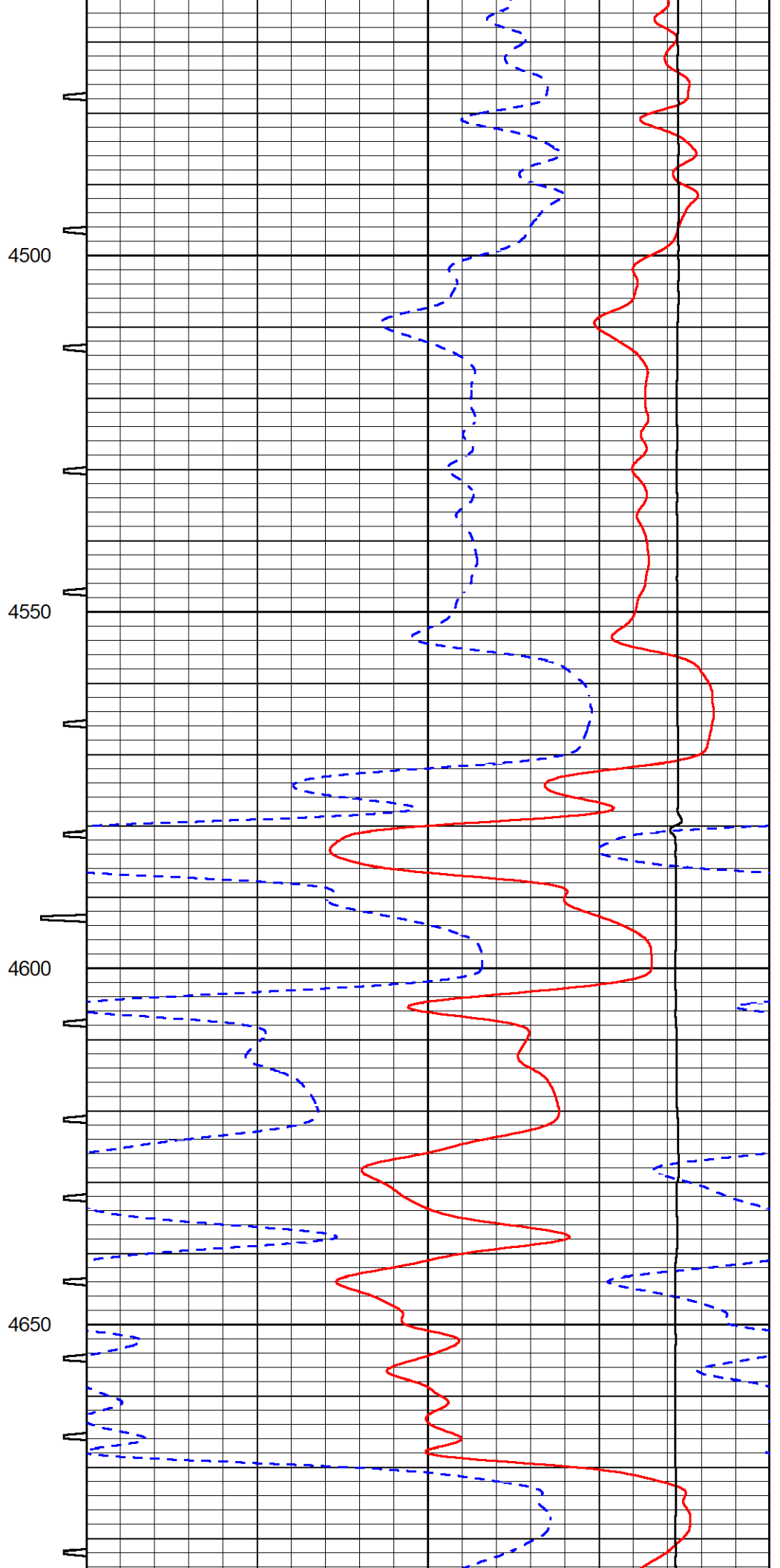
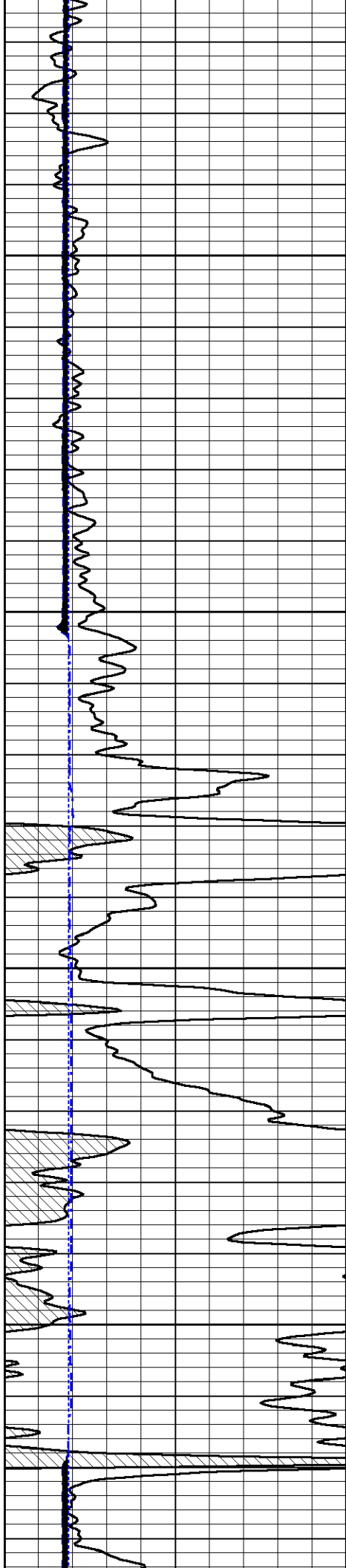
REPEAT SECTION

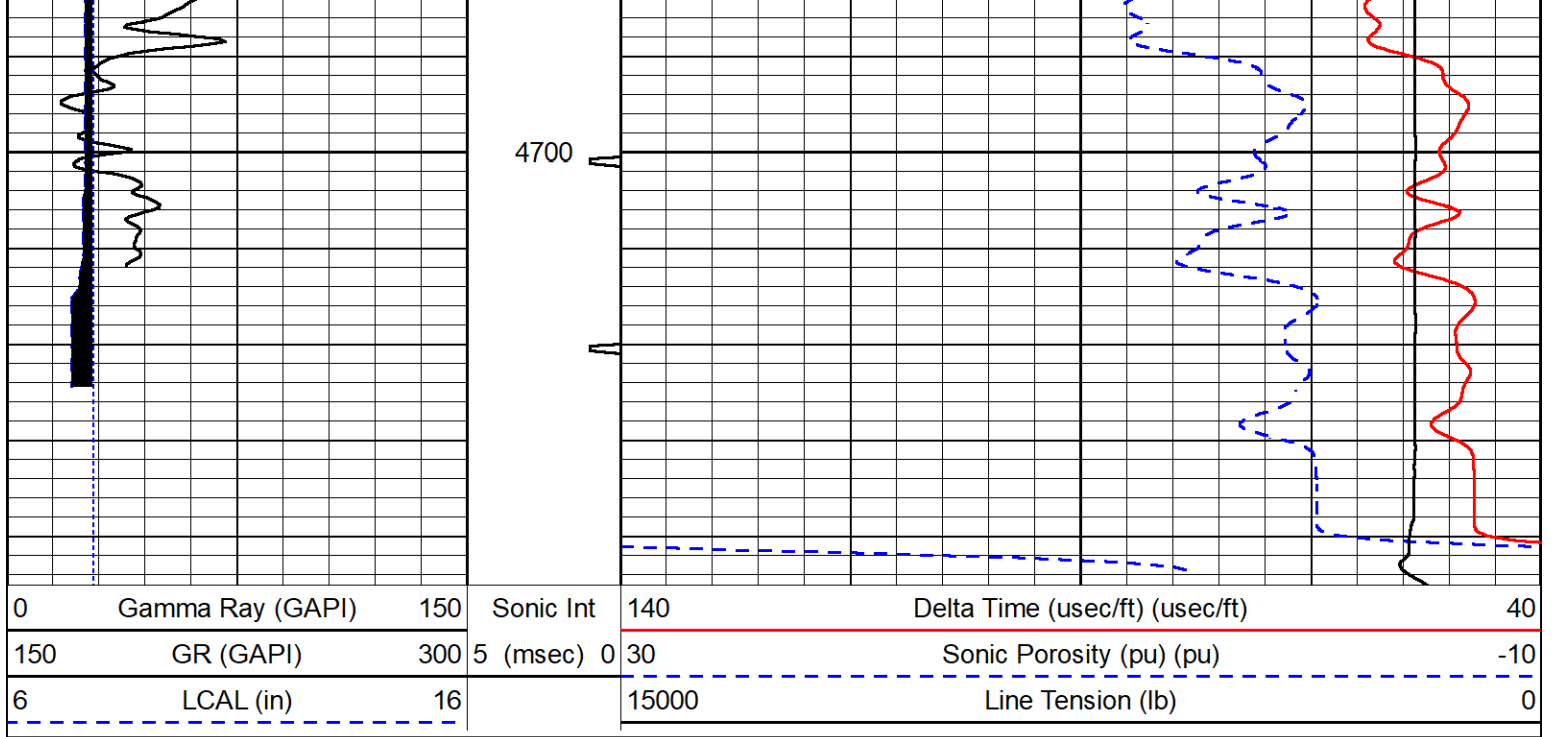
REPEAT PASS

Database File griffin_reta 1.db
 Dataset Pathname stkml/pass2.1
 Presentation Format _sonic
 Dataset Creation Wed Nov 01 01:05:46 2023
 Charted by Depth in Feet scaled 1:240

0	Gamma Ray (GAPI)	150	Sonic Int	140	Delta Time (usec/ft) (usec/ft)	40
150	GR (GAPI)	300	5 (msec) 0	30	Sonic Porosity (pu) (pu)	-10
6	LCAL (in)	16		15000	Line Tension (lb)	0







Calibration Report

Database File griffin_reta 1.db
 Dataset Pathname stkml/pass3.1
 Dataset Creation Wed Nov 01 02:38:22 2023

Dual Induction Calibration Report

Serial-Model: 505 HT-M&W
 Surface Cal Performed: Sat Oct 21 23:47:45 2023

Loop:	Readings		References			Results	
	Air	Loop	Air	Loop		m	b
Deep	167.000	835.000	0.000	255.800	mmho/m	0.500	-50.000
Medium	1348.000	1348.000	0.000	255.800	mmho/m	0.430	-45.000

Microlog Calibration Report

Serial-Model: 402-PSI STKBL ML
 Performed: Fri Oct 20 13:01:04 2023

	Readings		References			Results	
	Zero	Cal	Zero	Cal		m	b
Normal	0.0037	0.0043	0.0000	10.0000	Ohm-m	21500.0000	-0.5000
Inverse	0.1208	0.0013	0.0000	10.0000	Ohm-m	21000.0000	0.0000
Caliper	1.0046	1.1419	5.5000	20.0000	in	50.0000	-44.5000

LITHODENSITY Calibration Report

Serial Number: 704-10
 Tool Model: STEP LITHO
 Performed: Mon Jul 10 14:32:46 2023

Source:

Background:	Win1	Win2	Win3	Win4	Win5	Win6	Win7	Win8
	50	200	240	20	20	20	10	4

SS:	51	52	200	248	22	69	43	1	cps
LS:	86	98	369	472	53	149	98	3	cps

Aluminum:

SS:	770	911	2087	1811	37	71	43	2	cps
LS:	972	1684	3061	1465	60	147	96	5	cps

Magnesium:

SS:	1299	1502	3449	2640	40	69	47	3	cps
LS:	4207	6947	11930	4497	91	136	95	12	cps

Aluminum+Iron:

SS:	502	651	1766	1595	36	70	46	1	cps
LS:	571	1190	2606	1318	59	148	98	5	cps

	Density			PE					
	Actual	Calibrated		Actual	Calibrated	Quality			
Background:									
SS:						0.235			
LS:						0.209			
Aluminum:									
SS:	2.6000	2.6000	g/cc			0.245			
LS:	2.6000	2.6000	g/cc			0.210			
Magnesium:									
SS:	1.6800	1.6800	g/cc	2.5700	2.5700	0.192			
LS:	1.6800	1.6800	g/cc	2.5700	2.5700	0.177			
Aluminum+Iron:									
SS:					6.1800	0.198			
LS:					6.1800	0.206			

Caliper:	Reference:	Reading:
Small Ring:	6.0 in	0.2
Large Ring:	16.0 in	0.8
Gain:	18.088	
Offset:	0.255	

Compensated Neutron Calibration Report

Serial Number:	210
Tool Model:	M&W

CALIBRATION

Detector	Readings	Target	Normalization
Short Space	6240.00 cps	1000.00 cps	1.6025
Long Space	460.00 cps	1000.00 cps	1.9500

Gamma Ray Calibration Report

Serial Number:	105
Tool Model:	M&W
Performed:	Sat Oct 21 23:48:19 2023
Calibrator Value:	500.0 GAPI
Background Reading:	24.0 cps
Calibrator Reading:	637.0 cps
Sensitivity:	0.6000 GAPI/cps



Company	Griffin Management, LLC
Well	Reta #1
Field	Sewer



Field	Sawyer
County	Pratt
State	Kansas