



MIDWEST SURVEYS
 LOGGING - PERFORATING - CONSULTING SERVICES
 P. O. Box 68, Osawatomie, KS 68084
 913 / 755 - 2128

GAMMA RAY / NEUTRON / CCL

File No. Company **Colt Energy, Inc.**
 Well **Clime No.- 61**
 Field **Iola**
 County **Allen** State **Kansas**

Location **661° FNL & 1051° FEL**
NW-SW-NE-NE
 Sec. 16 Twp. 24S Rge. 18E
 Permian Datum **GL** Elevation **956'**
 Log Measured From **GL** K.B. NA
 Drilling Measured From **GL** D.F. NA
GL 956'

Date **02-12-2024**
 Run Number **One**
 Depth Driller **964.0**
 Depth Logger **950.8**
 Bottom Logged Interval **949.8**
 Top Log Interval **20.0**
 Fluid Level **Full**

Type Fluid **Water**
 Density / Viscosity **NA**
 Salinity - PPM Cl **NA**
 Max Recorded Temp **NA**
 Estimated Cement Top **0.0**
 Equipment No. **104** Orientation **Steve Windisch**
 Recorded By **Steve Windisch**
 Witnessed By **Wes Woods**

BORE-HOLE RECORD				CASING RECORD			
Run No.	BIT	FROM	TO	SIZE	WGT.	FROM	TO
One	12.25"	0.0	20.0	8.625"	28.0	0.0	20.0
Two	6.75"	20.0	994.0	4.50"	10.5	0.0	994.7
						Set	At

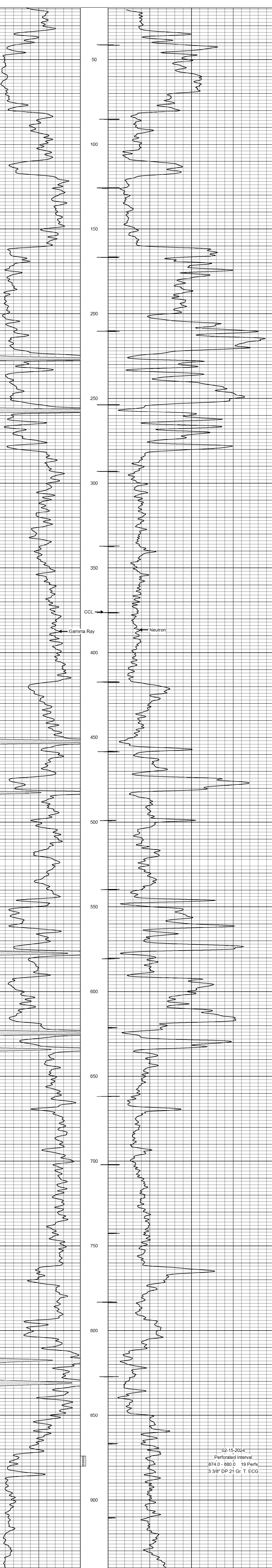
<<< Fold Here >>>

All interpretations are opinions based on inferences from electrical or other measurements and we cannot and do not guarantee the accuracy or correctness of any interpretation, and we shall not, except in the case of gross or willful negligence on our part, be liable or responsible for any loss, costs, damages, or expenses incurred or sustained by anyone resulting from any interpretation made by any of our officers, agents or employees. These interpretations are also subject to our general terms and conditions set out in our current Price Schedule.

Comments

Drilling Contractor :
 Colt Energy, Inc.

Database File: cline 61.db
 Dataset Pathname: pass1
 Presentation Format: gr-n-ccl
 Dataset Creation: Mon Feb 12 09:51:24 2024 by Log SCH 111116
 Charted by: Depth in Feet scaled 1:240



02-15-2024
 Perforated Interval
 874.0 - 880.0 19 Perfs.
 3 3/8" DP 21 Gr. T. ECG