



MIDWEST WIRELINE

**DUAL COMPENSATED
POROSITY W/PE**

Company **Campbell Energy LLC**
 Well **JPC #1**
 Field **Turkey Creek East**
 County **Barber** State **Kansas**

Company **Campbell Energy LLC**
 Well **JPC #1**
 Field **Turkey Creek East**
 County **Barber**
 State **Kansas**

Location: **API #: 15-007-24484-00-00**
NE NE SW
2310 FL & 2310 FWL
SEC 15 TWP 30S RGE 15W
 Permanent Datum **Ground Level** Elevation **1899**
 Log Measured From **Kelly Bushing**
 Drilling Measured From **Kelly Bushing**
 Other Services **DIL/MEL**
 K.B. **1904**
 D.F. **1899**
 G.L. **1899**

Date	1/11/2023						
Run Number	One						
Type Log	CNL/CDL						
Depth Driller	4803						
Depth Logger	4806						
Bottom Logged Interval	4777						
Top Logged Interval	2800						
Type Fluid In Hole	Chemical						
Salinity, PPM CL	7500						
Density	9.4						
Level	Full						
Max. Rec. Temp. F	124						
Operating Rig Time	2.5 Hours						
Equipment -- Location	P-24 Hays						
Recorded By	T. Martin						
Witnessed By	Eli Felts						
Borehole Record							
Run No.	Bit	From	To	Size	Wgt.	From	To
One	17.5	00	49	13.375		00	49
Two	12.25	49	975	8.625	23	00	975
Three	7.875	975	TD				
Casing Record							

<<< Fold Here >>>

All interpretations are opinions based on inferences from electrical or other measurements and Midwest Wireline Services, LLC cannot and does not guarantee the accuracy or correctness of any interpretation, and Midwest Wireline Services, LLC will not be liable or responsible for any loss, costs, damages, or expenses incurred or sustained by anyone resulting from any interpretation made by any of our officers, agents or employees.

Comments

N/A DENOTES NOT AVAILABLE OR NON-APPLICABLE.

**Croft, KS, S to 110, 1 E, S into
(NE of lrg pond)**

Log Measured From: Kelly Bushing 5 Ft. Above Permanent Datum

**THANK YOU FOR USING MIDWEST WIRELINE LLC
785-625-3858**

Your Midwest Wireline Crew

Engineer: T. Martin
Operator:
Operator:
Operator:

This Log Record Was Witnessed By

Primary Witness: Eli Felts
Secondary Witness:
Secondary Witness:
Secondary Witness:

Sensor	Offset (ft)	Schematic	Description	Length (ft)	O.D. (in)	Weight (lb)
GR	40.75		GR-M&W (102)	3.00	3.50	50.00
CNLSC CNSSC	37.65 36.90		CNT-M&W (207)	5.00	3.50	100.00
			MWLith-STEP LITHO (704-10) Long Litho Mandrel	8.92	5.00	250.00
LCAL	28.21					
LLW8N	28.21					
LLW7N	28.21					
LLW6N	28.21					
LLW5N	28.21					
LLW4N	28.21					
LLW3N	28.21					
LLW2N	28.21		ML-PSIML (401)	7.58	4.00	65.00
LLW1N	28.21					
LSLOCK	27.96					
LLLOCK	27.96					
PELTMPR	27.96					
LSHVNG	27.96					
LLHVNG	27.96					
LSW8N	27.71					
LSW7N	27.71					
LSW6N	27.71					
LSW5N	27.71					
LSW4N	27.71					
LSW3N	27.71					
LSW2N	27.71					
LSW1N	27.71					
MCAL	19.58	DIL-M&W (507)	18.25	3.50	220.00	
MI	19.58					
MN	19.58					
RLL3F	15.50					
RLL3	15.50					
CILD	8.33					
CILM	4.50					
SP	0.20					

Dataset: campbell_jpc #1.db: field/well/StkMI/pass3.1
 Total length: 42.75 ft
 Total weight: 685.00 lb
 O.D.: 5.00 in

Log Variables

DatabaseC:\ProgramData\Warrior\Data\campbell_jpc #1.db
 Dataset field/well/StkMI/pass3.1/_vars_

Top - Bottom

BOREID in 7.875	BOTTEMP degF 124	CASEOD in 5.5	CASETHCK in 0	FLUIDDEN g/cc 1	MATRXDEN g/cc 2.71	NPORSEL Limestone	PERFS No
SNDERR mmho/m 1	SNDERRM mmho/m -3	SPSHIFT mV 230	SRFTEMP degF 40	SZCOR Off	TDEPTH ft 4806		

Variable Description

BOREID : Borehole I.D.
 BOTTEMP : Bottom Hole Temperature
 CASEOD : Casing O.D.
 CASETHCK : Casing Thickness
 FLUIDDEN : Fluid Density
 MATRXDEN : Matrix Density
 NPORSEL : Neutron Porosity Curve Select

PERFS : Perforation Flag
 SNDERR : Deep Sonde Error Correction
 SNDERRM : Medium Sonde Error Correction
 SPSHIFT : S.P. Baseline Offset
 SRFTEMP : Surface Temperature
 SZCOR : CN Size Cor. ?
 TDEPTH : Total Depth

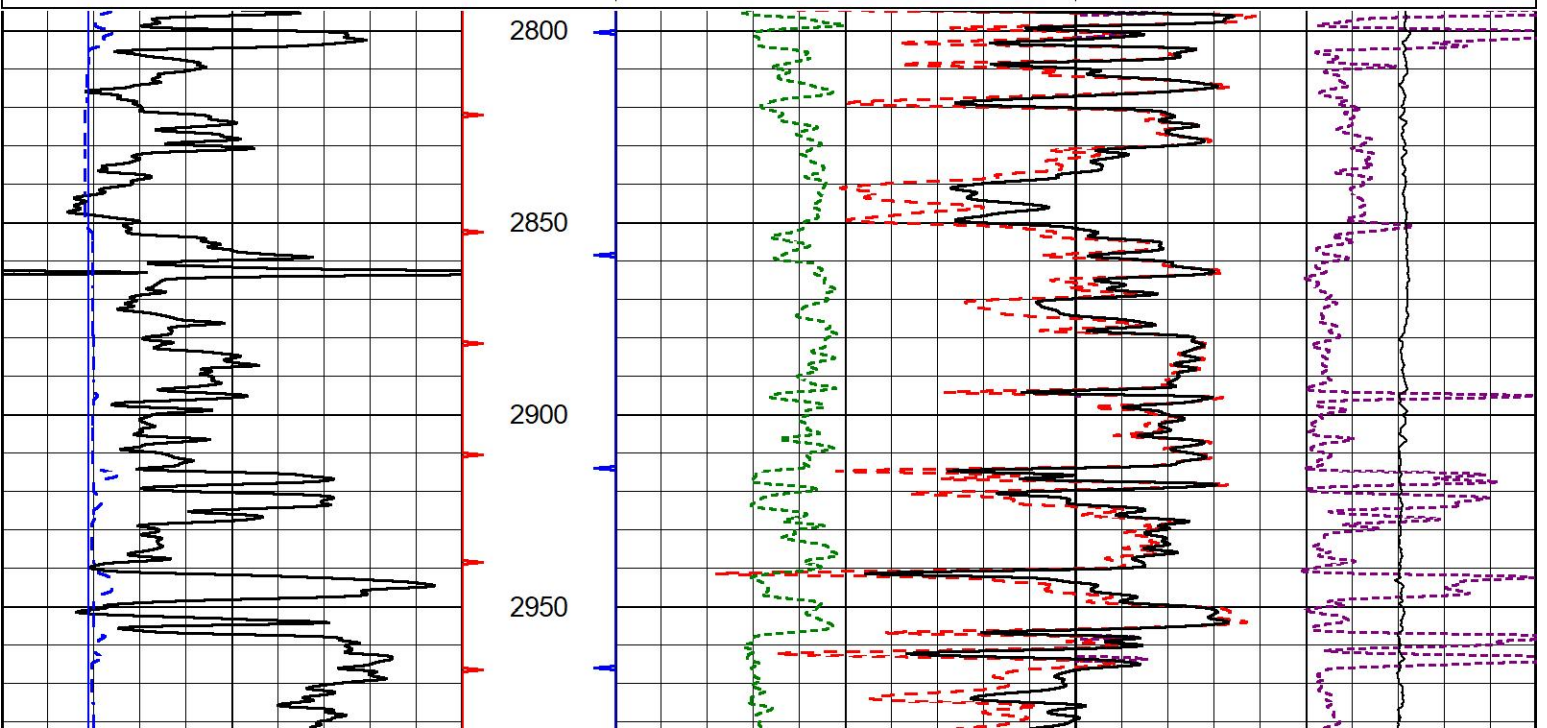


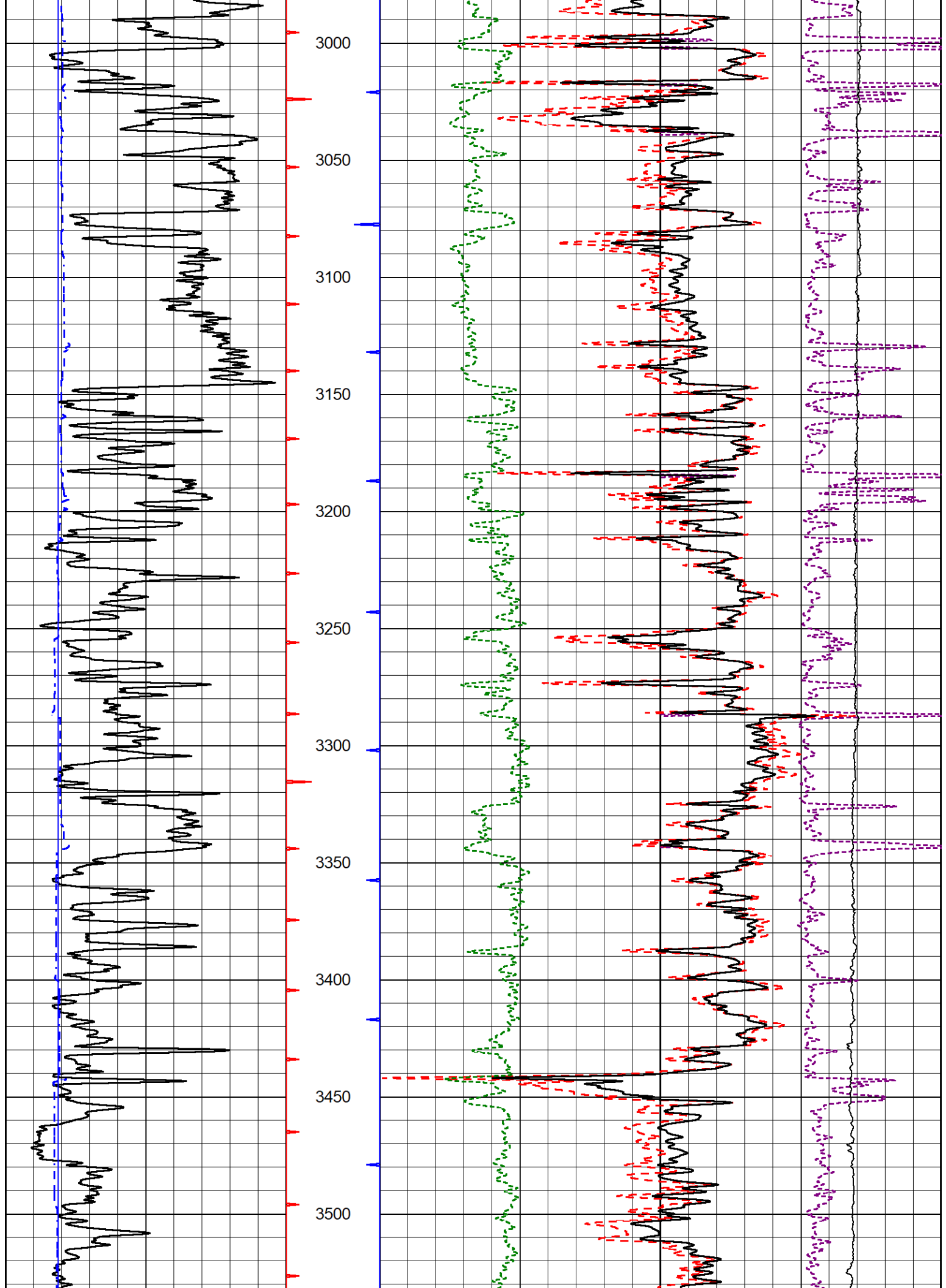
2" SCALE BULK DENSITY

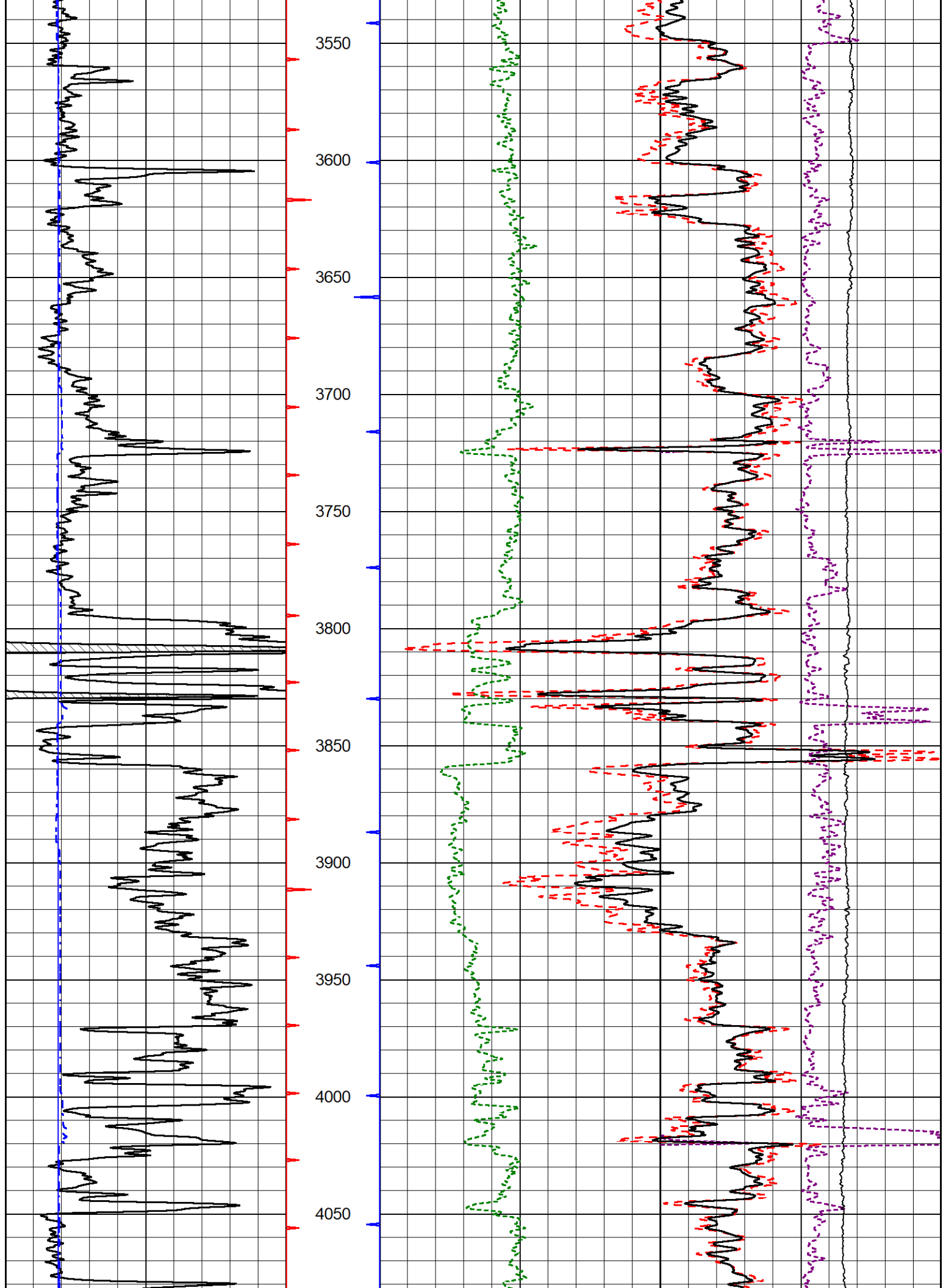
MAIN PASS

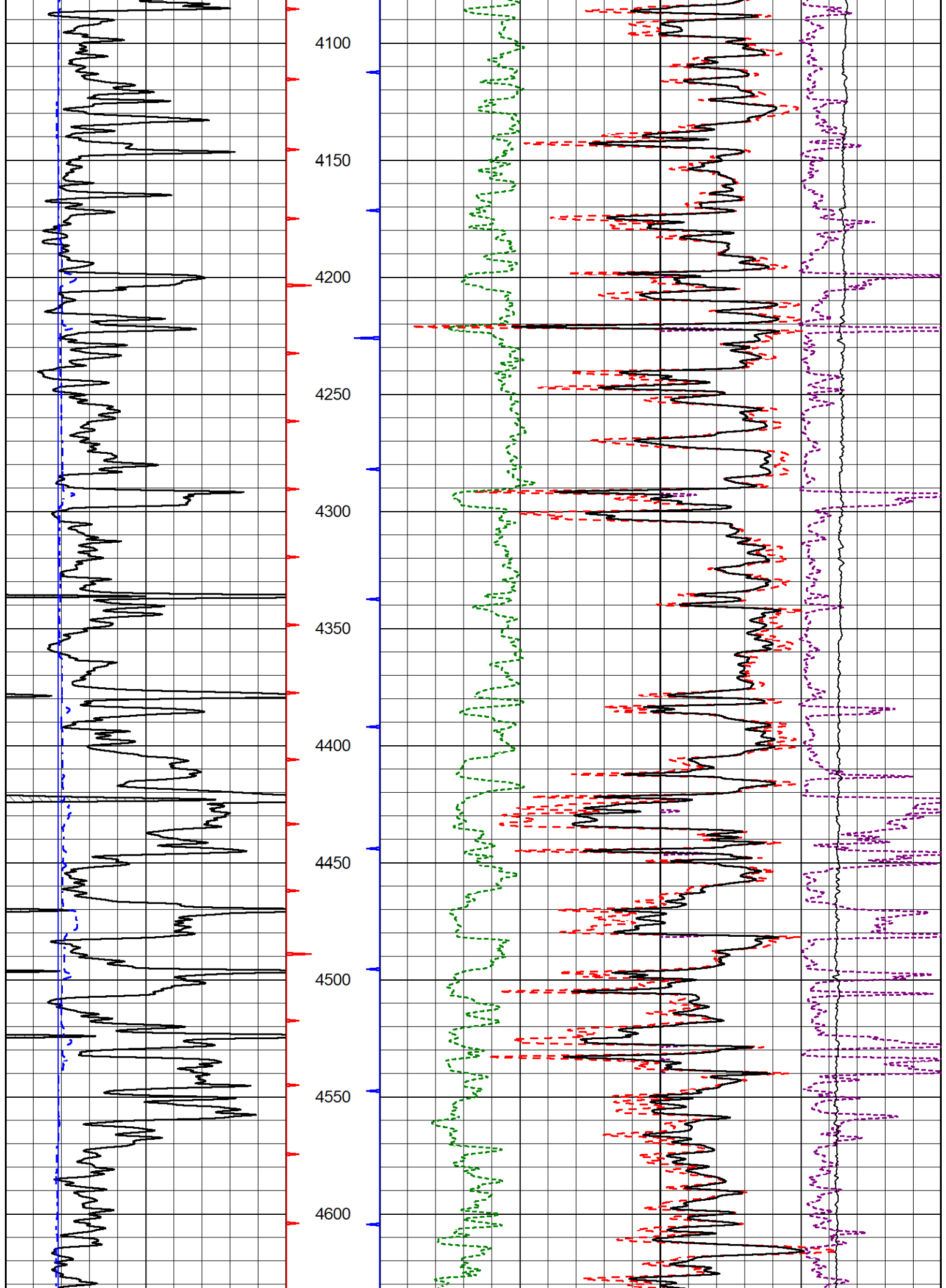
Database File campbell_jpc #1.db
 Dataset Pathname StkMI/pass3.3
 Presentation Format _cdpe
 Dataset Creation Thu Jan 11 11:36:45 2024
 Charted by Depth in Feet scaled 1:600

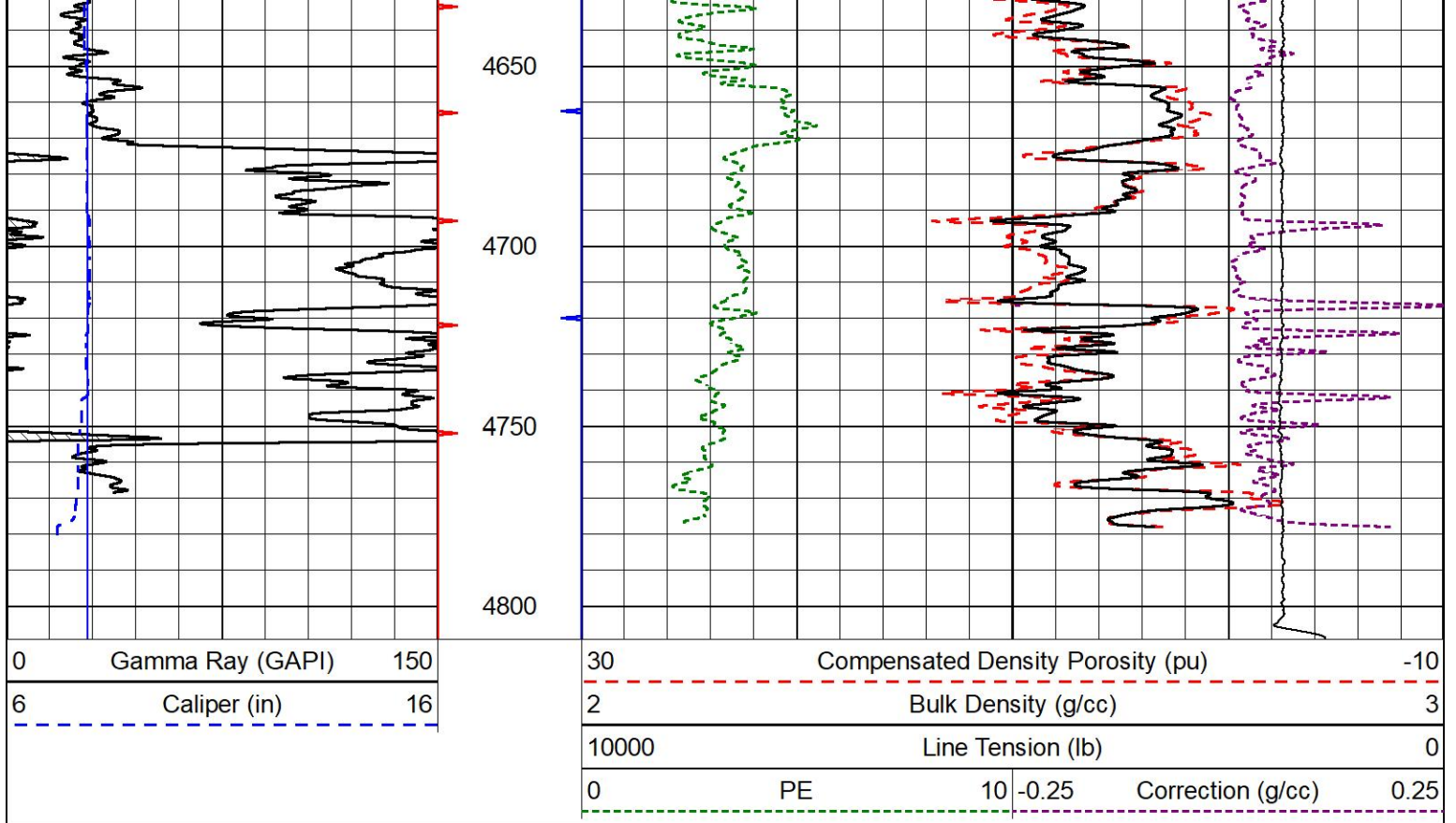
0	Gamma Ray (GAPI)	150	30	Compensated Density Porosity (pu)	-10
6	Caliper (in)	16	2	Bulk Density (g/cc)	3
			10000	Line Tension (lb)	0
			0	PE	10 -0.25
				Correction (g/cc)	0.25







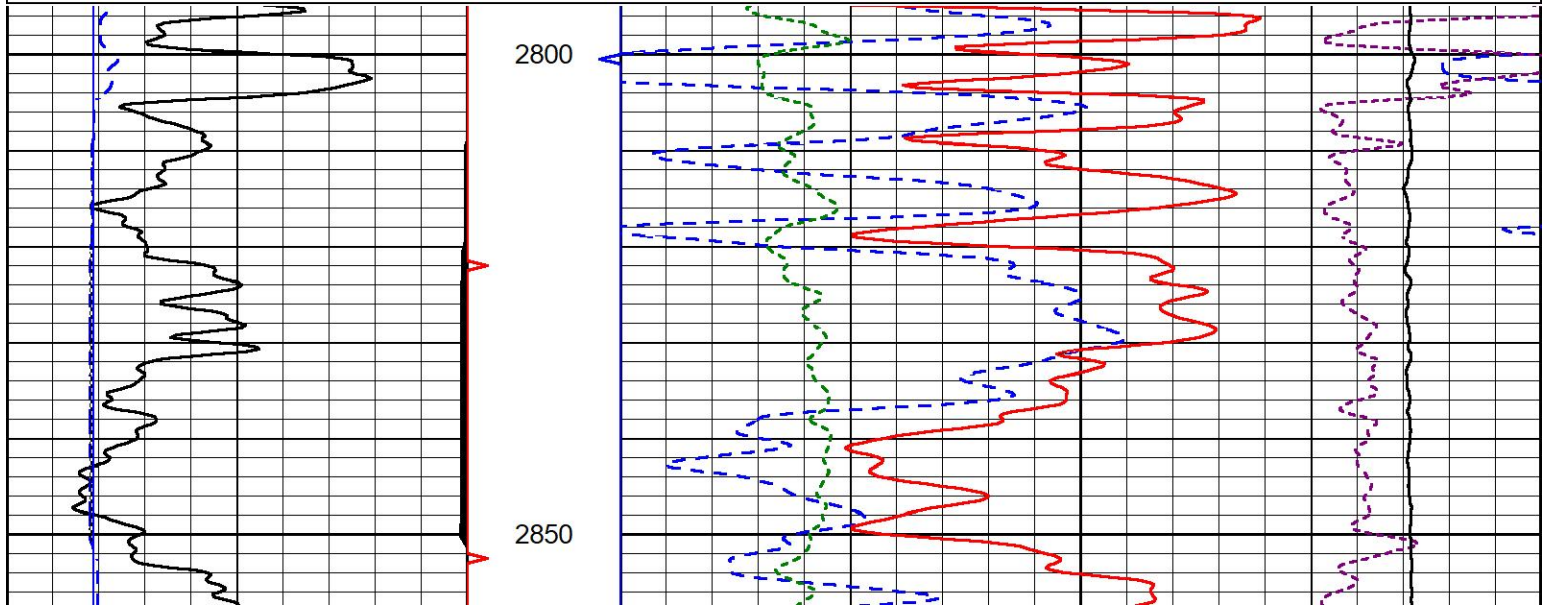
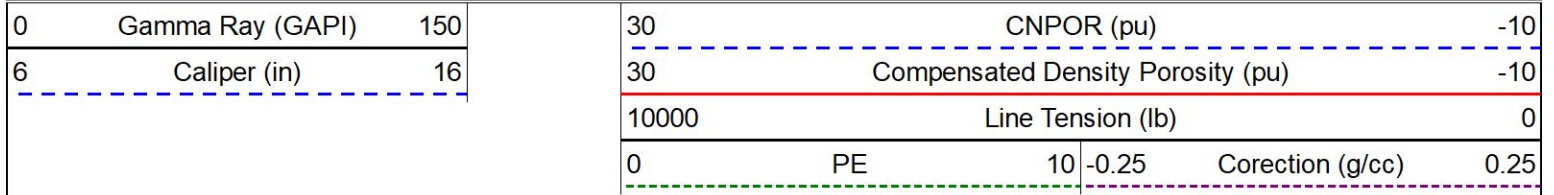


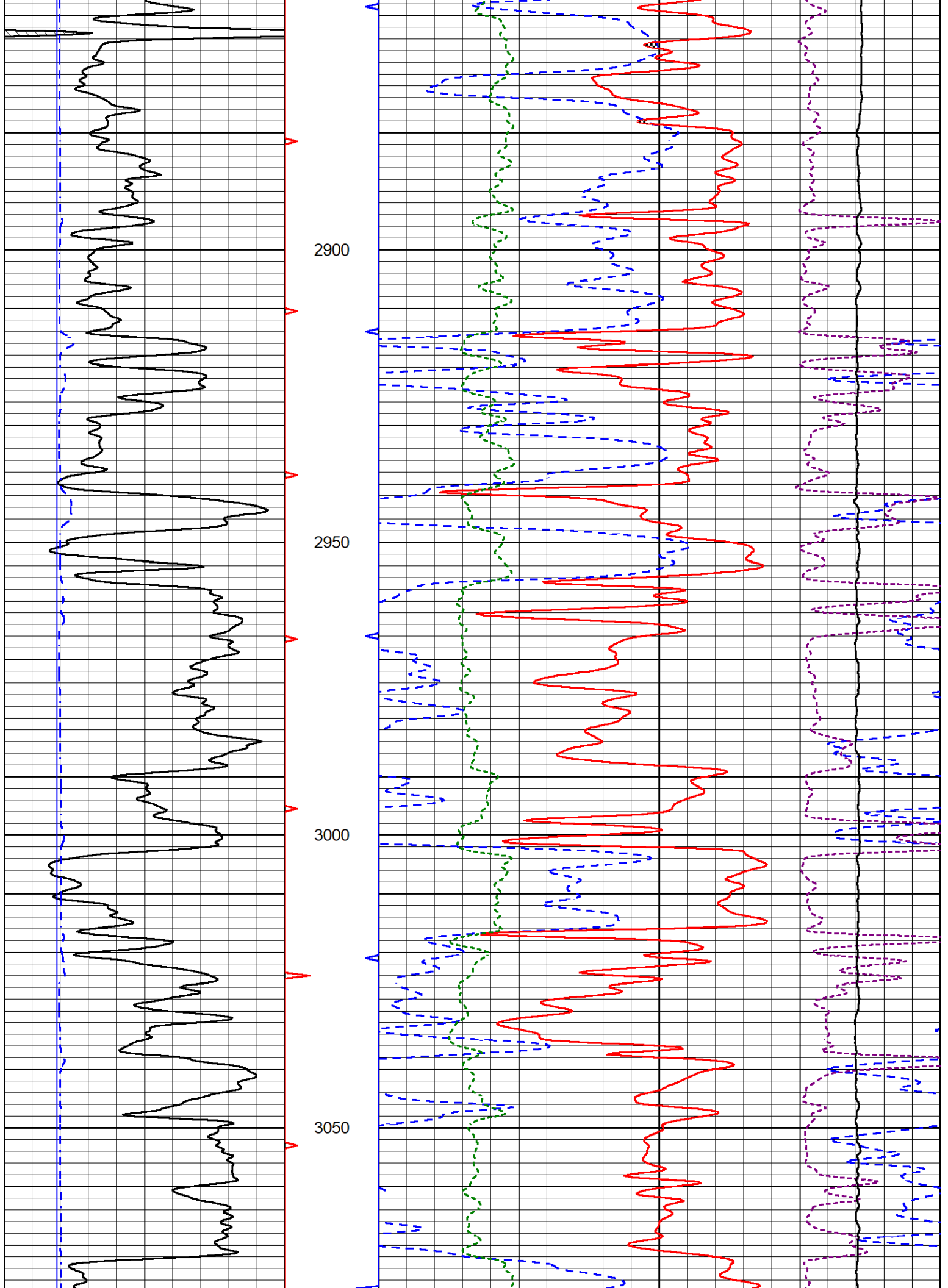


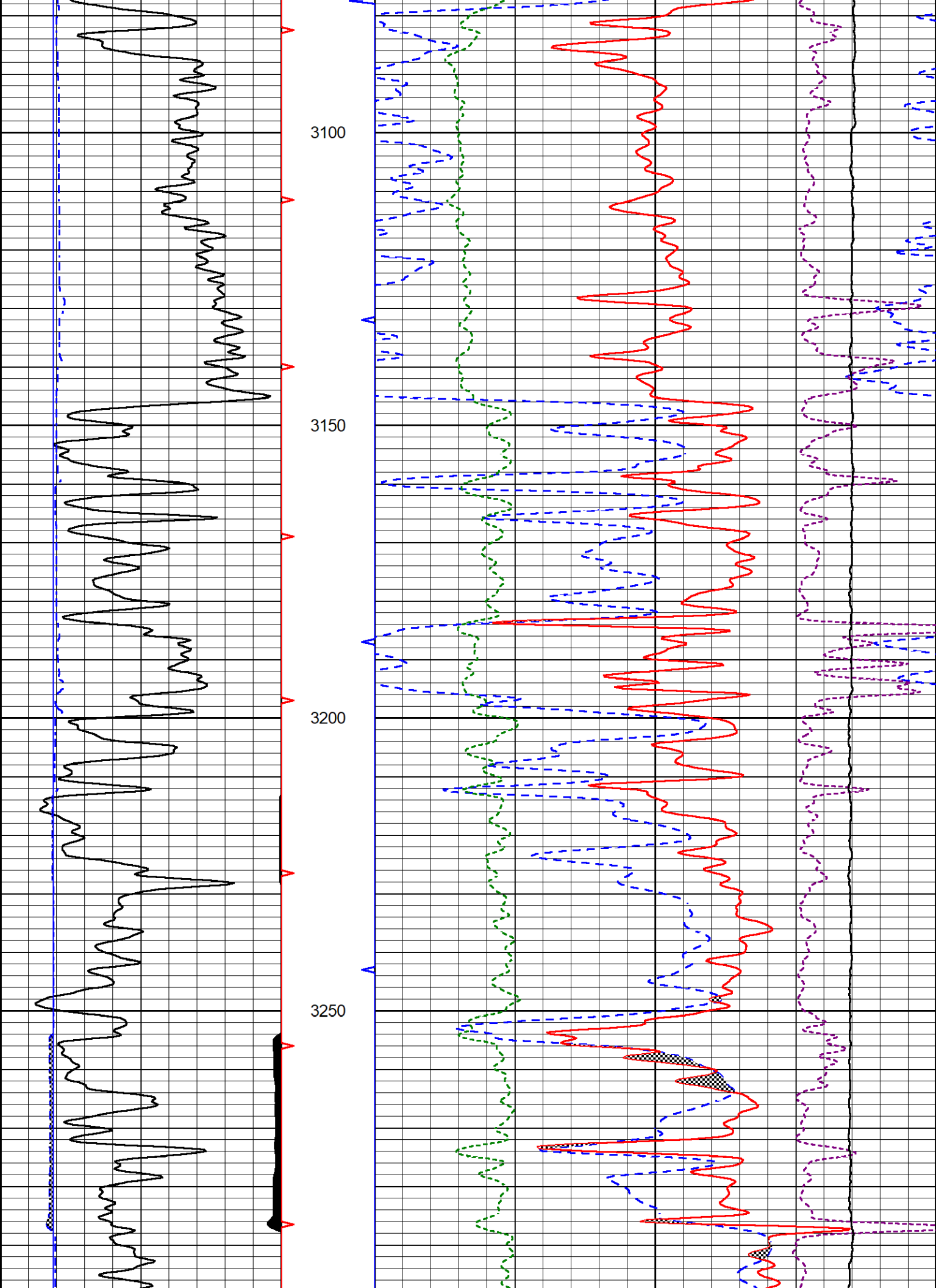
DETAIL SECTION

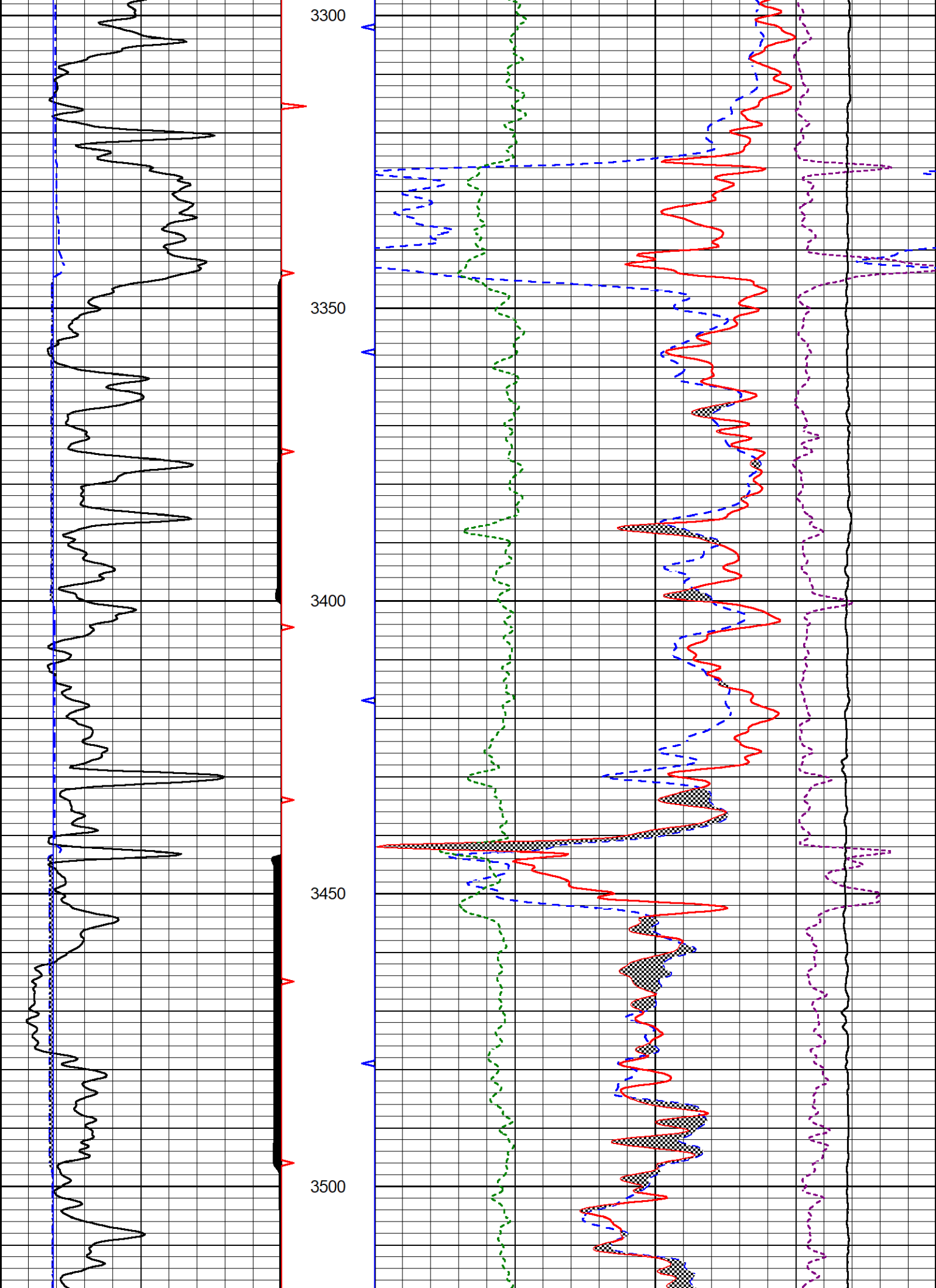
MAIN PASS

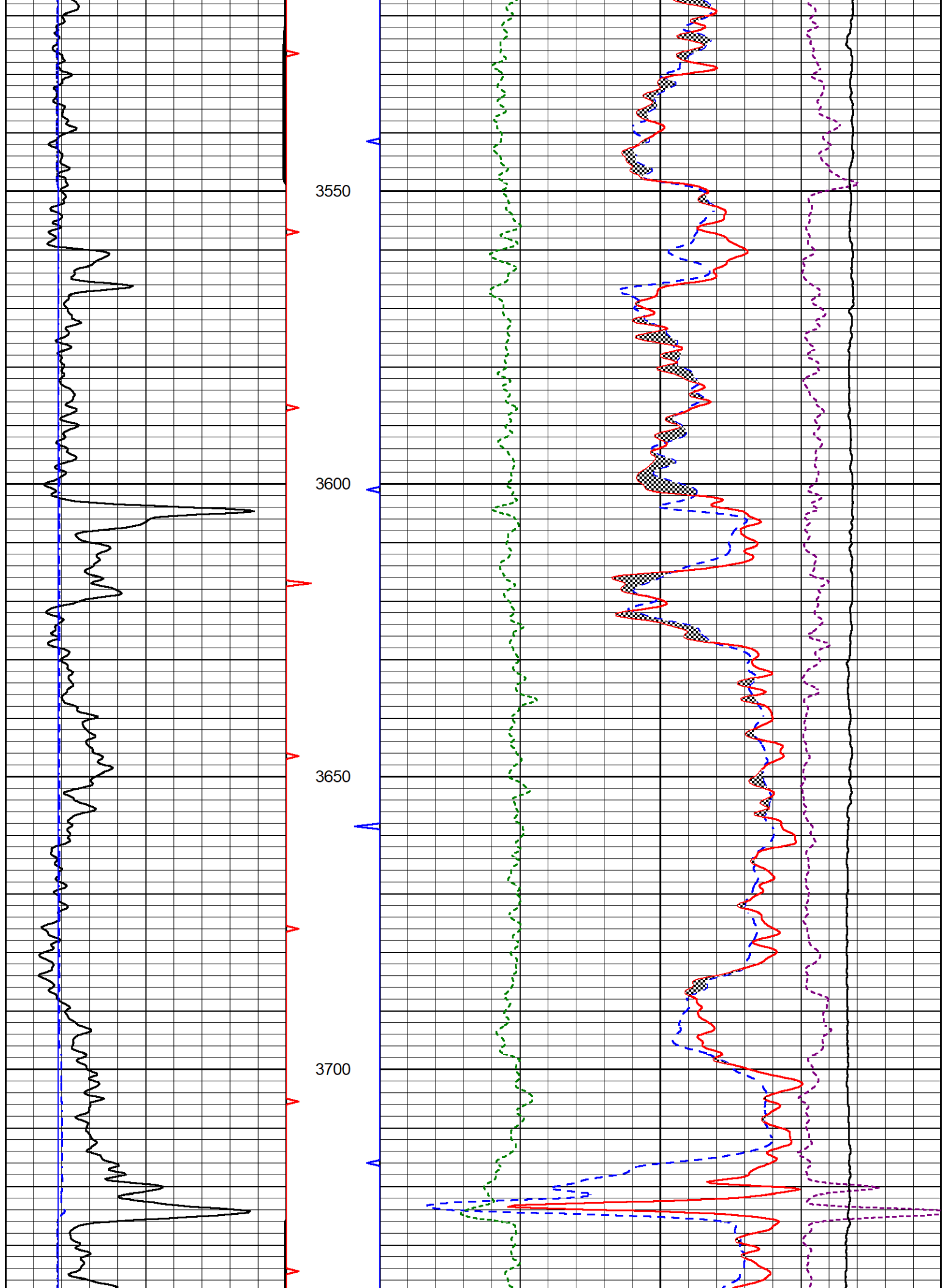
Database File campbell_jpc #1.db
 Dataset Pathname StkMI/pass3.1
 Presentation Format _CNDLS~4
 Dataset Creation Thu Jan 11 12:02:55 2024
 Charted by Depth in Feet scaled 1:240

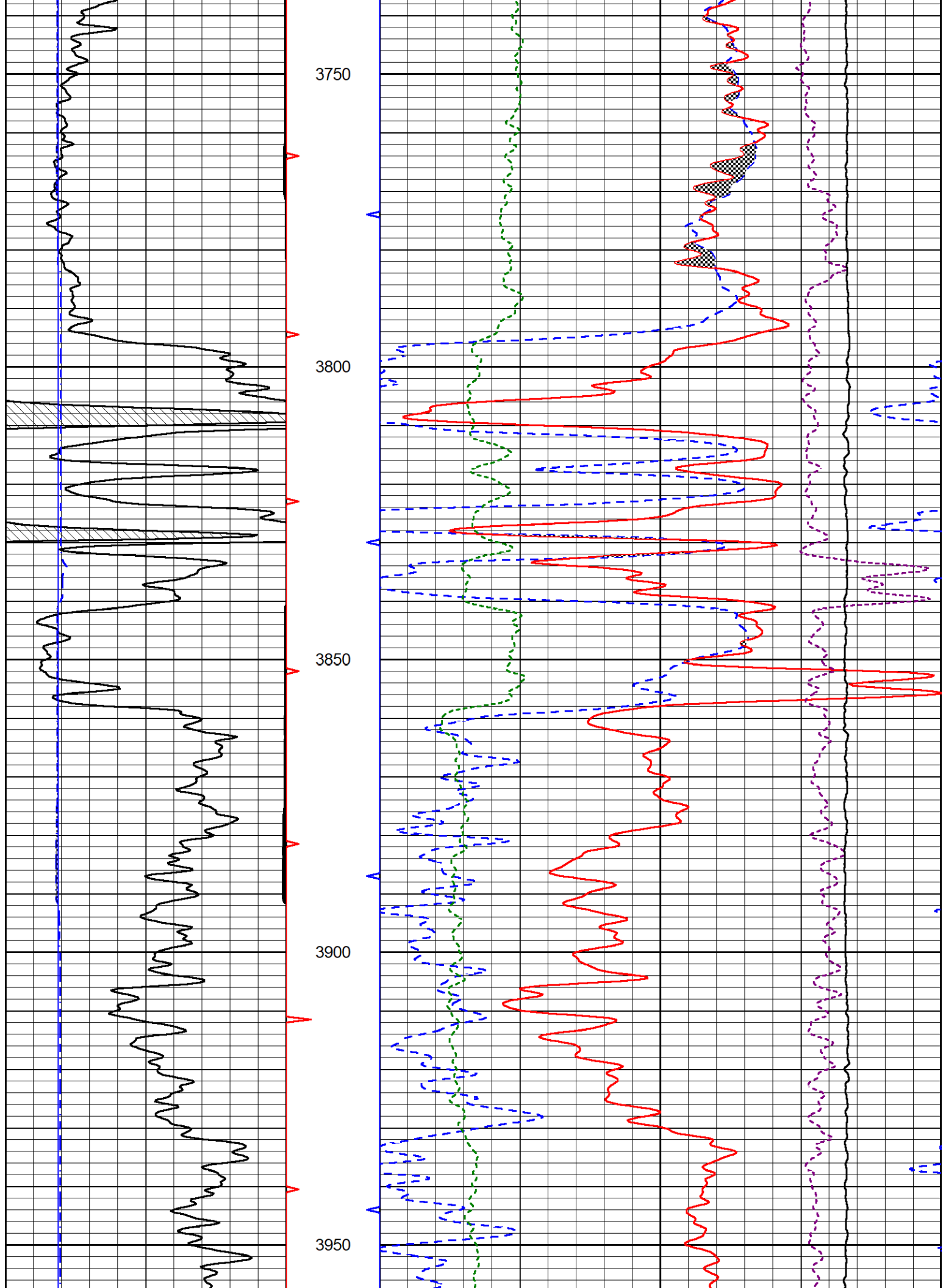


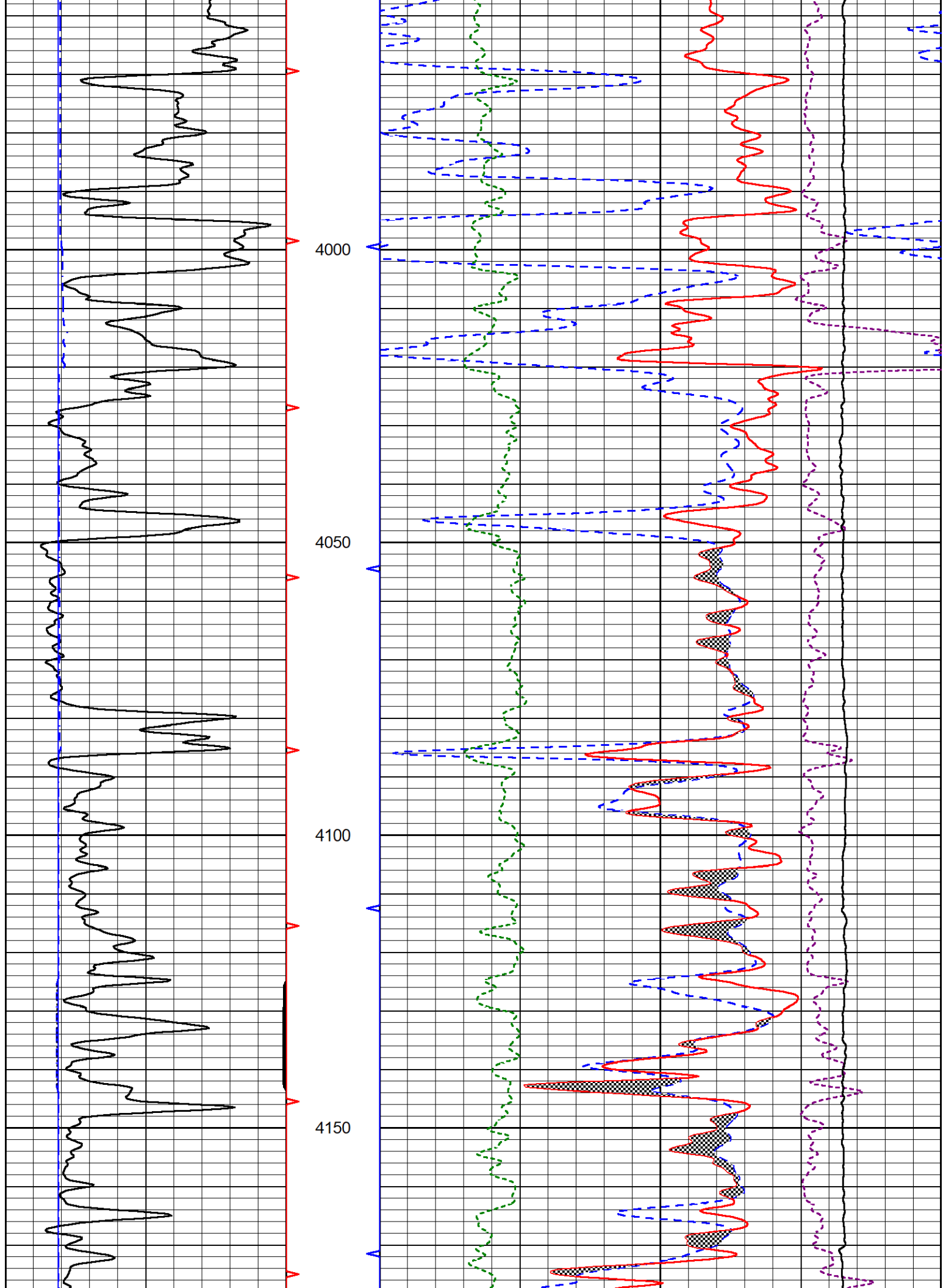


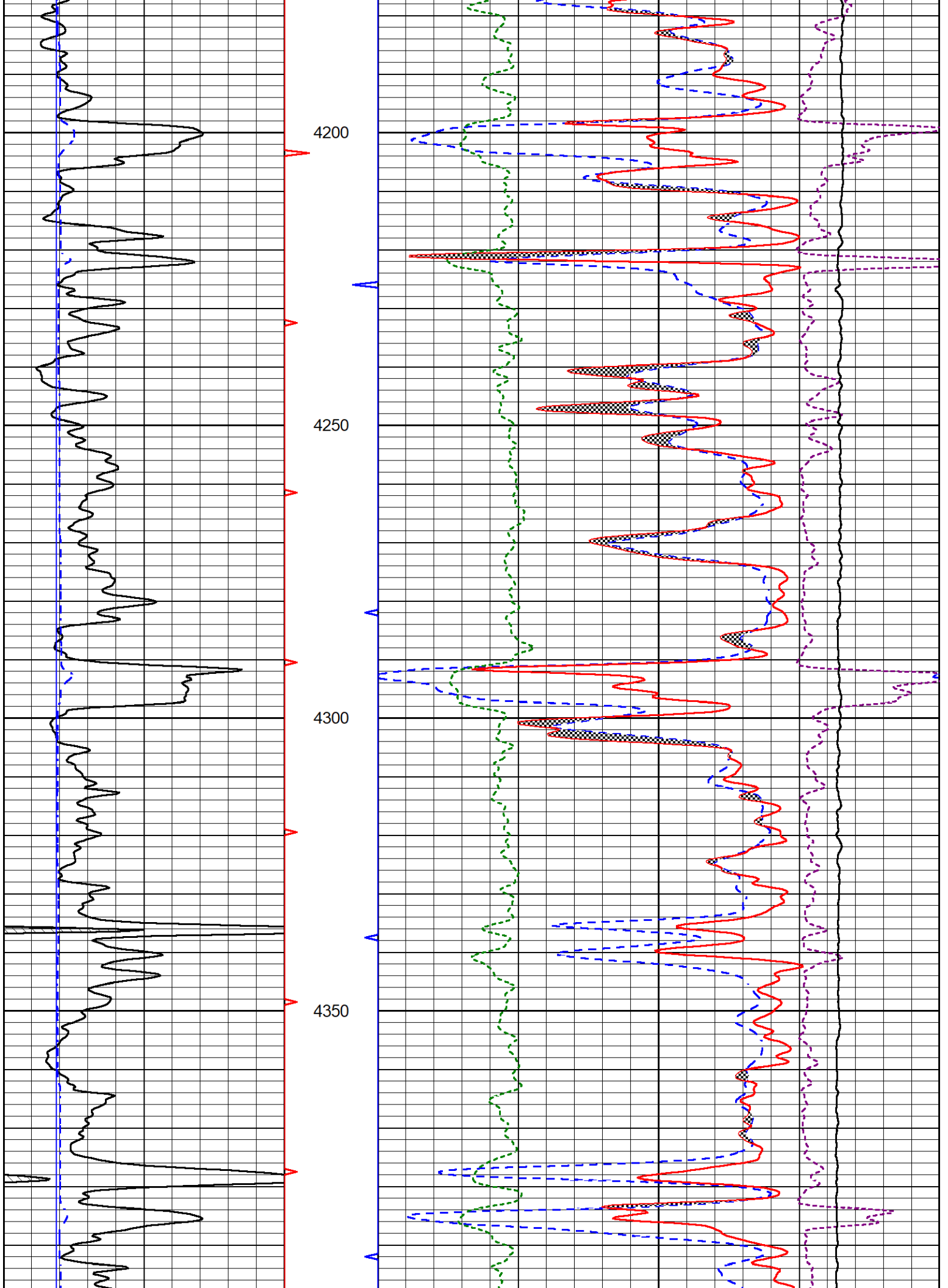


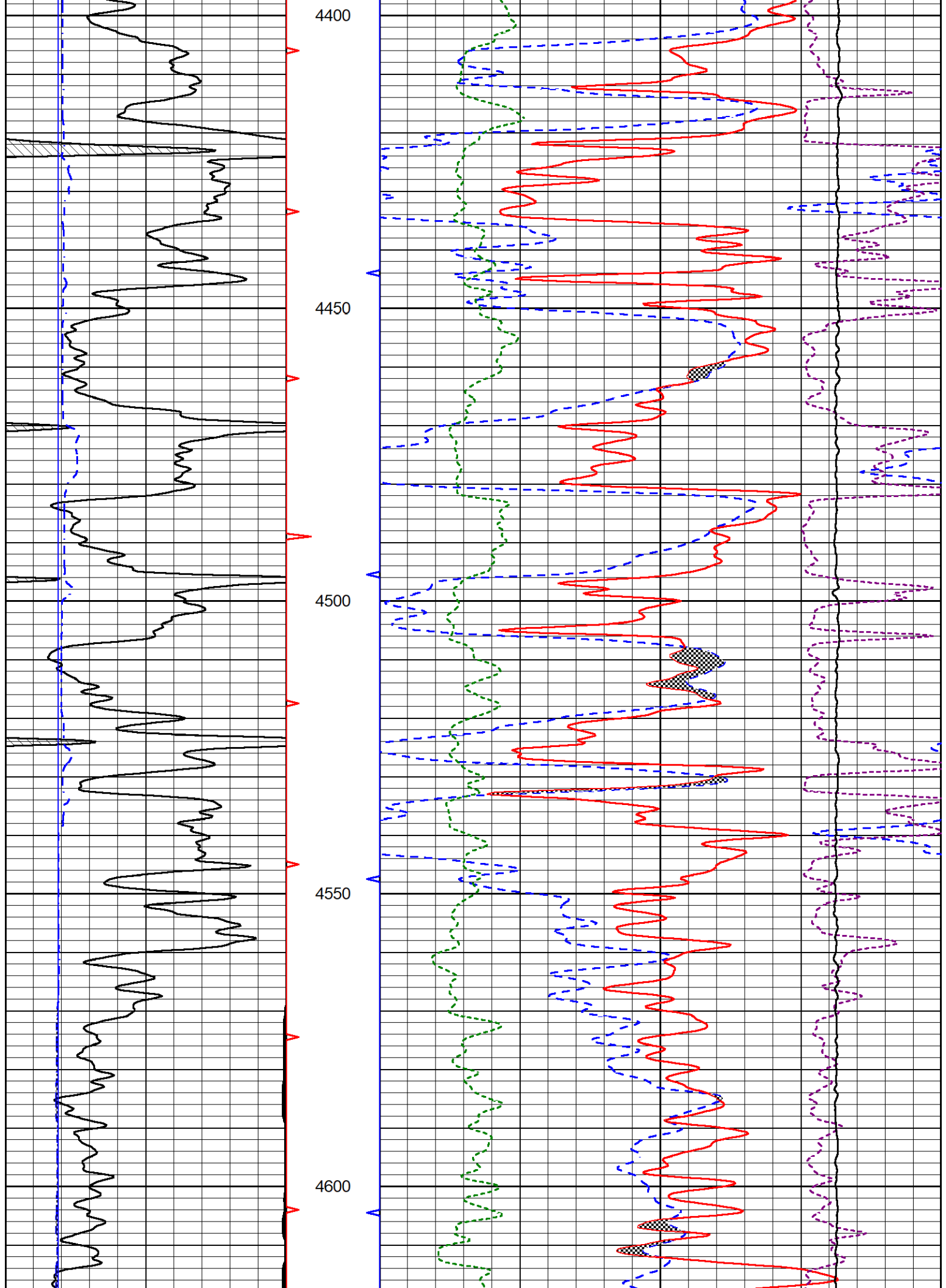


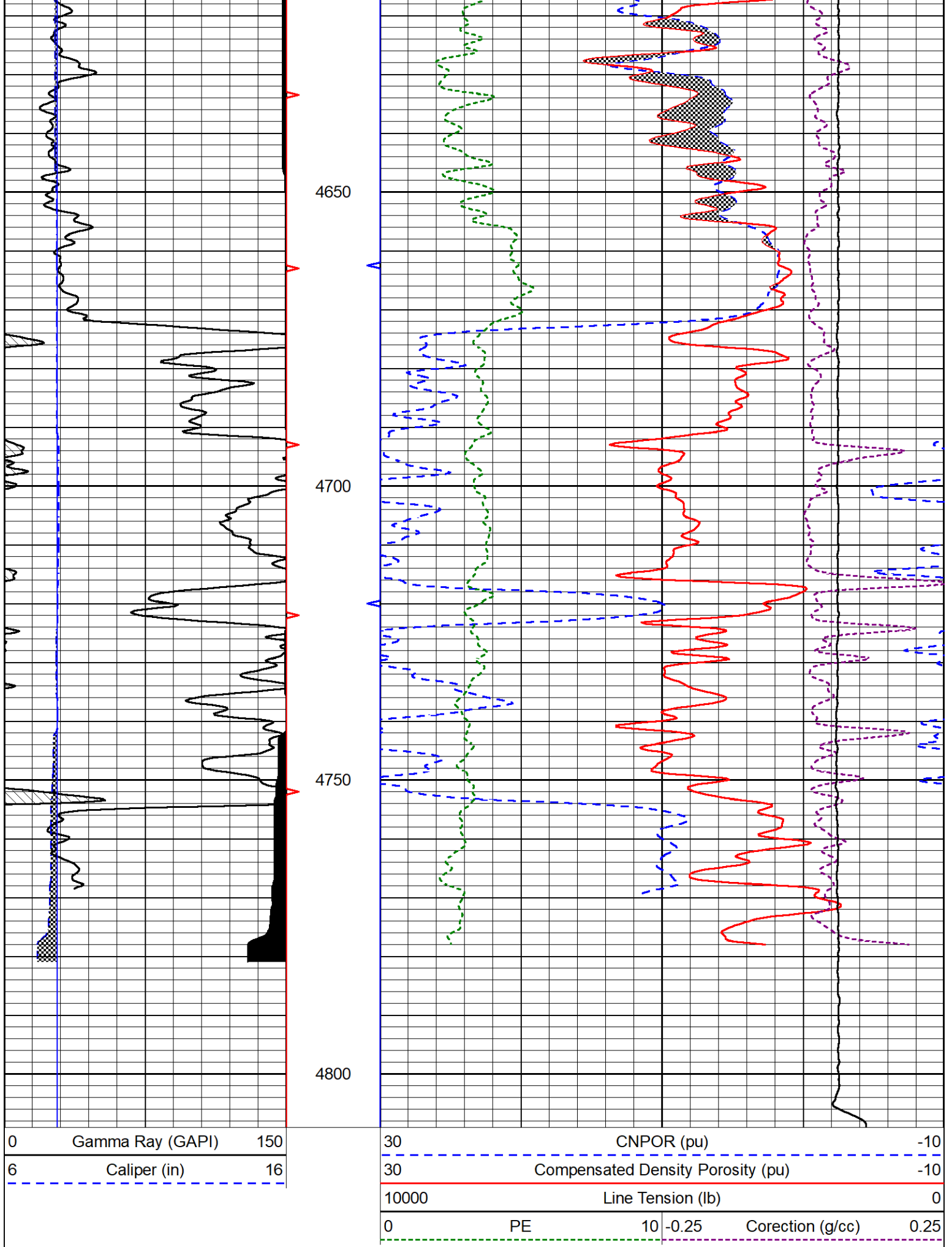












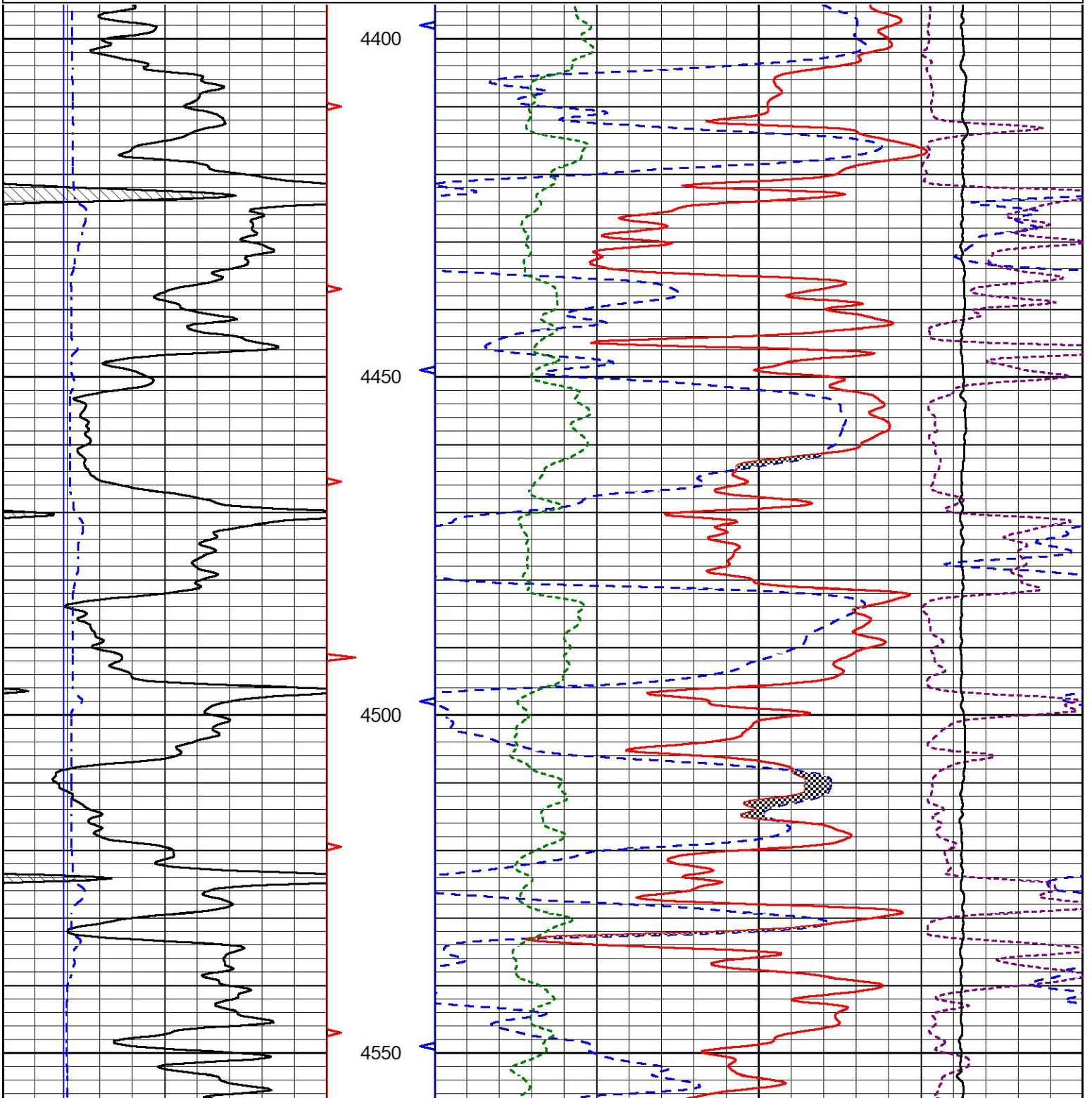


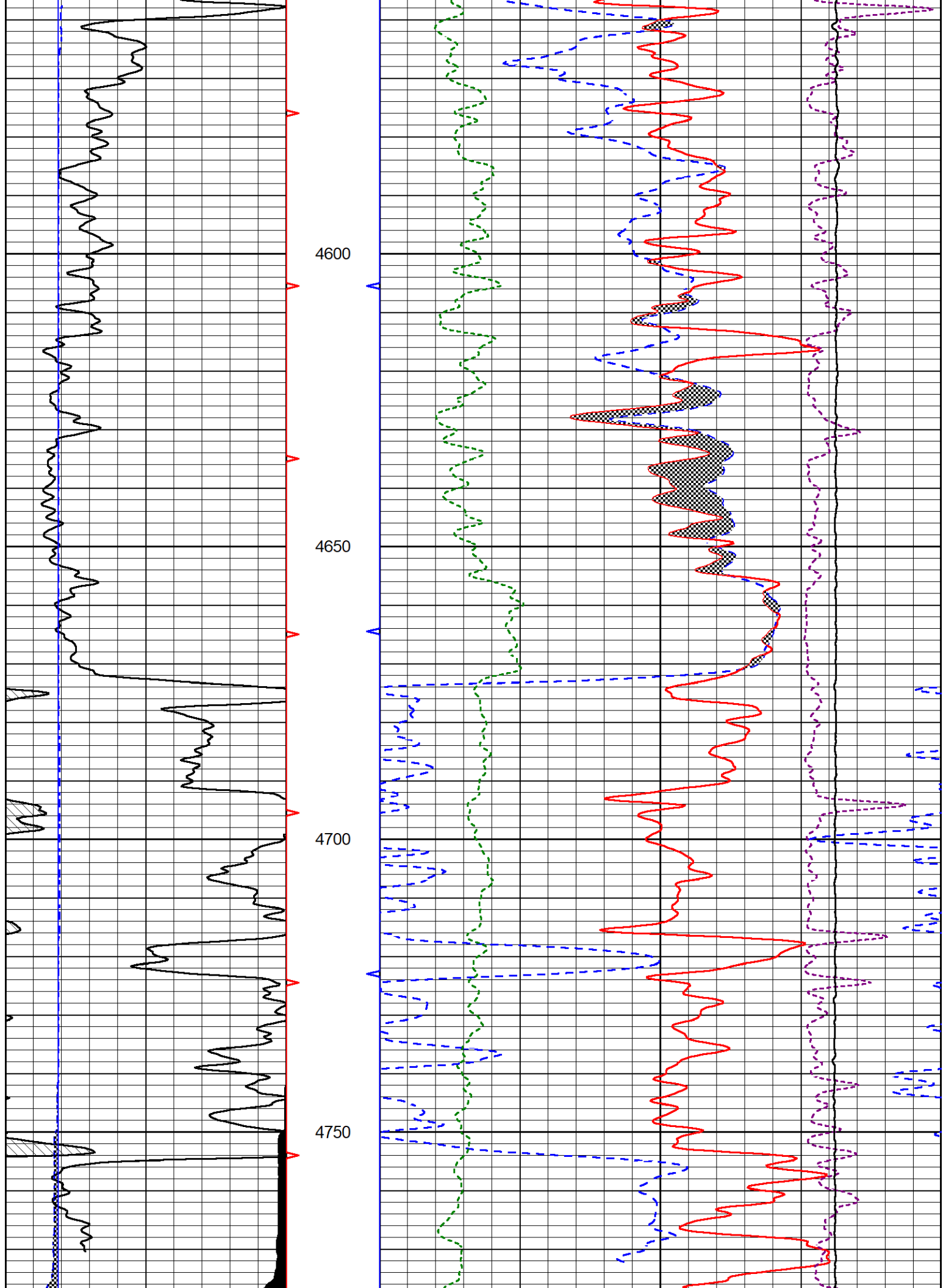
REPEAT SECTION

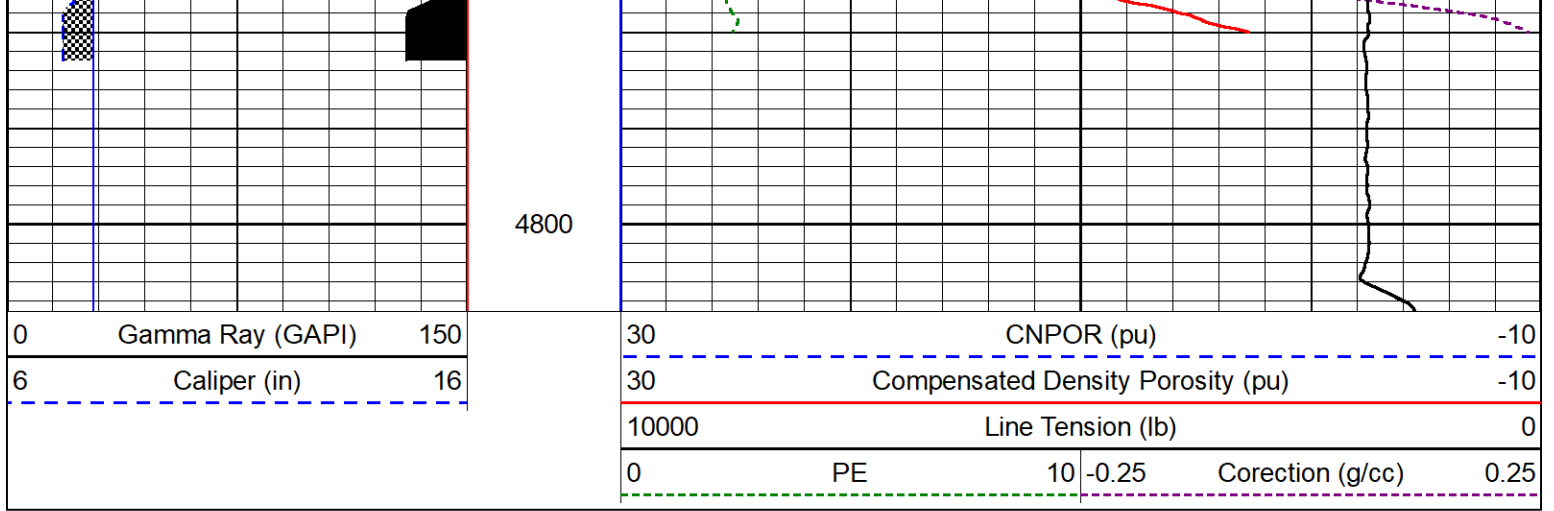
REPEAT PASS

Database File campbell_jpc #1.db
 Dataset Pathname StkMI/pass2.1
 Presentation Format _CNDLS~4
 Dataset Creation Thu Jan 11 11:43:10 2024
 Charted by Depth in Feet scaled 1:240

0	Gamma Ray (GAPI)	150	30	CNPOR (pu)		-10
6	Caliper (in)	16	30	Compensated Density Porosity (pu)		-10
			10000	Line Tension (lb)		0
			0	PE	10 -0.25	Correction (g/cc) 0.25







Calibration Report

Database File: campbell_jpc #1.db
 Dataset Pathname: StkMI/pass3.1
 Dataset Creation: Thu Jan 11 12:02:55 2024

Dual Induction Calibration Report

Serial-Model: 507-M&W
 Surface Cal Performed:

Loop:	Readings		References			Results	
	Air	Loop	Air	Loop		m	b
Deep	68.570	638.100	0.000	255.800	mmho/m	0.500	-37.000
Medium	184.288	716.191	0.000	255.800	mmho/m	0.450	-79.000

Microlog Calibration Report

Serial-Model: 401-PSIML
 Performed: Mon Sep 25 22:02:56 2023

	Readings		References			Results	
	Zero	Cal	Zero	Cal		m	b
Normal	0.0000	1.0000	0.0000	1.0000	Ohm-m	20500.0000	-1.3000
Inverse	0.0000	1.0000	0.0000	1.0000	Ohm-m	17000.0000	-0.7500
Caliper	1.0052	1.0858	5.0000	16.5000	in	142.7190	-137.8600

LITHODENSITY Calibration Report

Serial Number: 704-10
 Tool Model: STEP LITHO
 Performed: Wed Oct 11 14:52:04 2023

Source:

	Win1	Win2	Win3	Win4	Win5	Win6	Win7	Win8	
Background:									
SS:	52	56	202	260	22	71	45	1	cps
LS:	82	93	356	462	52	144	94	3	cps
Aluminum:									
SS:	868	1009	2312	2012	39	73	47	2	cps
LS:	1063	1847	3324	1556	63	146	95	6	cps

Magnesium:

Magnesium:	SS: 1458	1686	3853	2923	42	73	48	3	cps
	LS: 4604	7631	13124	4967	100	134	94	14	cps
Aluminum+Iron:	SS: 538	708	1910	1720	37	73	47	1	cps
	LS: 619	1309	2817	1400	60	147	97	5	cps
		Density			PE				
		Actual	Calibrated		Actual	Calibrated	Quality		
Background:	SS:						0.225		
	LS:						0.208		
Aluminum:	SS:	2.6000	2.6000	g/cc			0.210		
	LS:	2.6000	2.6000	g/cc			0.210		
Magnesium:	SS:	1.6800	1.6800	g/cc	2.5700	2.5700	0.207		
	LS:	1.6800	1.6800	g/cc	2.5700	2.5700	0.173		
Aluminum+Iron:	SS:					6.1800	0.215		
	LS:					6.1800	0.205		

Before Survey									
Performed:	Wed Feb 9 13:15:42 2022								
SS:	0	0	0	0	0	0	0	0	cps
LS:	1370	1580	3705	3037	48	80	50	4	cps
After Survey									
Performed:	Wed Feb 9 13:16:02 2022								
SS:	0	0	0	0	0	0	0	0	cps
LS:	1400	1600	3800	3100	60	100	70	6	cps

Caliper:	Reference:	Reading:
Small Ring:	6.0 in	0.2
Large Ring:	15.0 in	0.8
Gain:	16.161	
Offset:	1.050	

Compensated Neutron Calibration Report

Serial Number: 207
Tool Model: M&W

CALIBRATION

Detector	Readings	Target	Normalization
Short Space	6240.00 cps	1000.00 cps	1.6025
Long Space	460.00 cps	1000.00 cps	1.9500

PRE-SURVEY VERIFICATION

	Detector	Readings	Measured	Target
1)	Short Space	cps		
	Long Space	cps	pu	pu
2)	Short Space	cps		
	Long Space	cps	pu	
3)	Short Space	cps		
	Long Space	cps	pu	


POST-SURVEY VERIFICATION

	Detector	Readings	Measured	Target
1)	Short Space			

1)	Short Space Long Space	cps cps	pu	pu
2)	Short Space Long Space	cps cps	pu	pu
3)	Short Space Long Space	cps cps	pu	pu

Gamma Ray Calibration Report

Serial Number:	102	
Tool Model:	M&W	
Performed:	Mon Sep 25 22:02:33 2023	
Calibrator Value:	1.0	GAPI
Background Reading:	0.0	cps
Calibrator Reading:	1.0	cps
Sensitivity:	0.5250	GAPI/cps

 MIDWEST WIRELINE	Company	Campbell Energy LLC
	Well	JPC #1
	Field	Turkey Creek East
	County	Barber
	State	Kansas