



MIDWEST WIRELINE

DUAL INDUCTION LOG

Company **Cambell Energy LLC**
 Well **JPC #2**
 Field **Turkey Creek East**
 County **Barber** State **Kansas**

Location: **API #: 15-007-24485-00-00** Other Services
NE SW NE SW
1760 FSL & 1850 FWL
CNL/CDL
MEL
 Permanent Datum **Ground Level** Elevation
 Log Measured From **Kelly Bushing**
 Drilling Measured From **Kelly Bushing** Elevation
K.B. 1870
D.F. 1865
G.L. 1865

Date	12/09/2023
Run Number	One
Depth Driller	4741
Depth Logger	4738
Bottom Logged Interval	4737
Top Log Interval	250
Casing Driller	8.625 @ 259
Casing Logger	254
Bit Size	7.875
Type Fluid in Hole	Chemical
Salinity, ppm CL	2800
Density / Viscosity	8.7 49
pH / Fluid Loss	9.5 9.2
Source of Sample	FLOWLINE
Rm @ Meas. Temp	0.85 @ 68
Rmt @ Meas. Temp	0.64 @ 8
Rmc @ Meas. Temp	1.15 @ 68
Source of Rmf / Rmc	CHARTS
Rm @ BHT	0.47 @ 123
Operating Rig Time	3 Hours
Max Rec. Temp. F	123
Equipment Number	P-108
Location	HAYS
Recorded By	Justin Trout
Witnessed By	Eli Felts

<<< Fold Here >>>

All interpretations are opinions based on inferences from electrical or other measurements and Midwest Wireline LLC cannot and does not guarantee the accuracy or correctness of any interpretation, and Midwest Wireline LLC will not be liable or responsible for any loss, costs, damages, or expenses incurred or sustained by anyone resulting from any interpretation made by any of our officers, agents or employees.

Comments

N/A DENOTES NOT AVAILABLE OR NON-APPLICABLE.

Croft, Ks South to 110th,
 1 East, South and East into

Log Measured From: Kelly Bushing 5 Ft. Above Permanent Datum

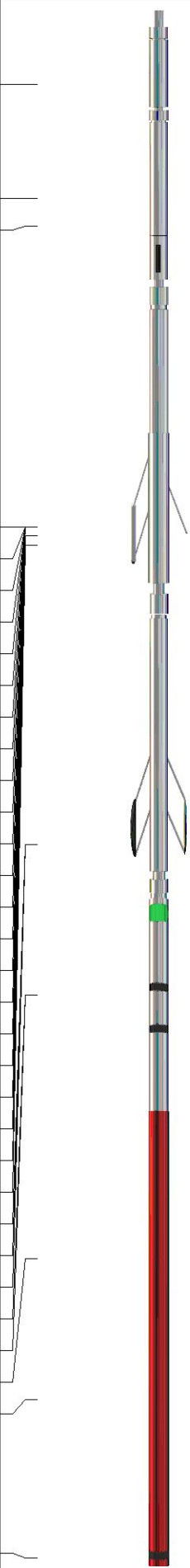
THANK YOU FOR USING MIDWEST WIRELINE LLC
 785-625-3858

Your Midwest Wireline Crew

Engineer: Justin Trout
 Operator:
 Operator:
 Operator:

This Log Record Was Witnessed By

Primary Witness: Eli Felts
 Secondary Witness:
 Secondary Witness:
 Secondary Witness:

Sensor	Offset (ft)	Schematic	Description	Length (ft)	O.D. (in)	Weight (lb)	
GR	40.23		GR-M&W (105)	3.00	3.50	50.00	
CNLSC CNSSC	37.13 36.38		CNT-M&W (210)	5.00	3.50	100.00	
			MWLith-STEP LITHO Short (701-01)	8.40	5.00	250.00	
LCAL	28.21						
LLW8N	28.21						
LLW7N	28.21						
LLW6N	28.21						
LLW5N	28.21						
LLW4N	28.21						
LLW3N	28.21						
LLW2N	28.21			ML-PSI STKBL ML (402)	7.58	4.00	65.00
LLW1N	28.21						
LSLOCK	27.96						
LLLOCK	27.96						
PELTMPR	27.96						
LSHVNG	27.96						
LLHVNG	27.96						
LSW8N	27.71						
LSW7N	27.71						
LSW6N	27.71						
LSW5N	27.71						
LSW4N	27.71						
LSW3N	27.71						
LSW2N	27.71						
LSW1N	27.71						
MCAL	19.58		DIL-M&W (504 HT)	18.25	3.50	220.00	
MI	19.58						
MN	19.58						
RLL3F	15.50						
RLL3	15.50						
CILD	8.33						
CILM	4.50						
SP	0.20						

Dataset: cambell energy_jpc #2.db: field/STKML/run1/pass4.1
 Total length: 42.23 ft
 Total weight: 685.00 lb
 O.D.: 5.00 in

Log Variables

DatabaseC:\ProgramData\Warrior\Data\cambell energy_jpc #2.db
 Dataset field/STKML/run1/pass4.1/_vars_

Top - Bottom

A	BOREID in	BOTTEMP degF	CASEOD in	CASETHCK in	FLUIDDEN g/cc	M	MATRXDEN g/cc
1	7.875	123	5.5	0	1	2	2.71
NPORSEL	PERFS	SNDERR mmho/m	SNDERRM mmho/m	SPSHIFT mV	SRFTEMP degF	SZCOR	TDEPTH ft
Limestone	No	0	4	476	0	Off	4738

Variable Description

A : Cement Factor (a)
 BOREID : Borehole I.D.
 BOTTEMP : Bottom Hole Temperature
 CASEOD : Casing O.D.
 CASETHCK : Casing Thickness
 FLUIDDEN : Fluid Density
 M : Cement Exp (m)
 MATRXDEN : Matrix Density

NPORSEL : Neutron Porosity Curve Select
 PERFS : Perforation Flag
 SNDERR : Deep Sonde Error Correction
 SNDERRM : Medium Sonde Error Correction
 SPSHIFT : S.P. Baseline Offset
 SRFTEMP : Surface Temperature
 SZCOR : CN Size Cor. ?
 TDEPTH : Total Depth



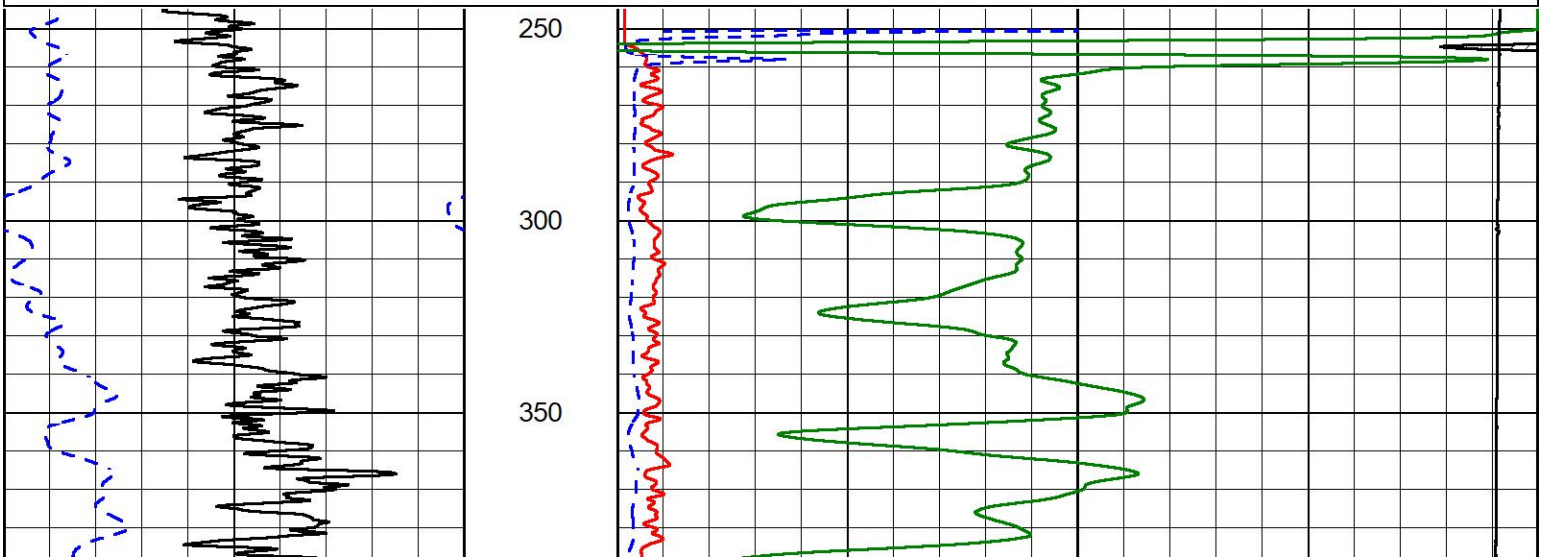
2" SCALE RESISTIVITY

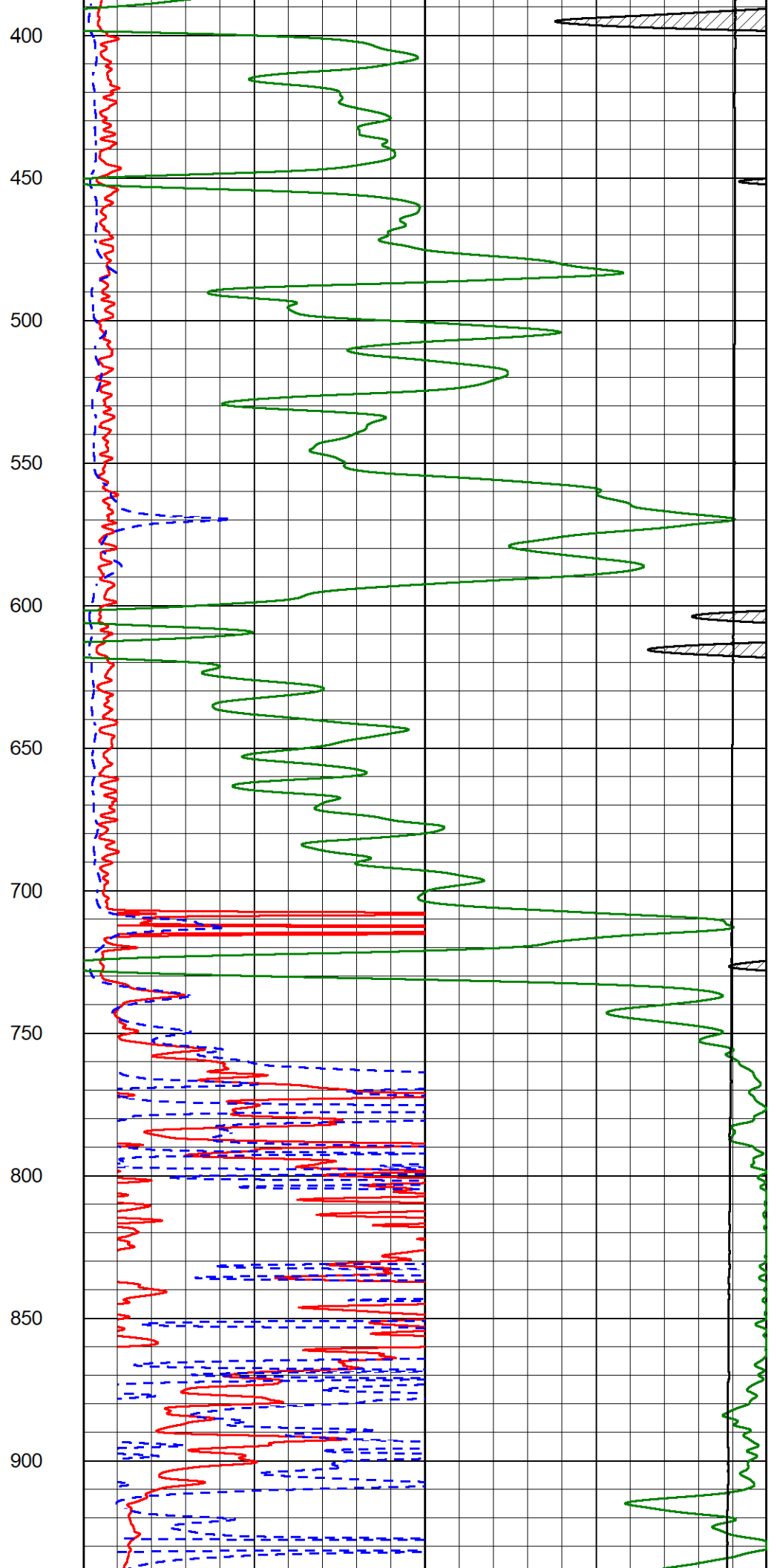
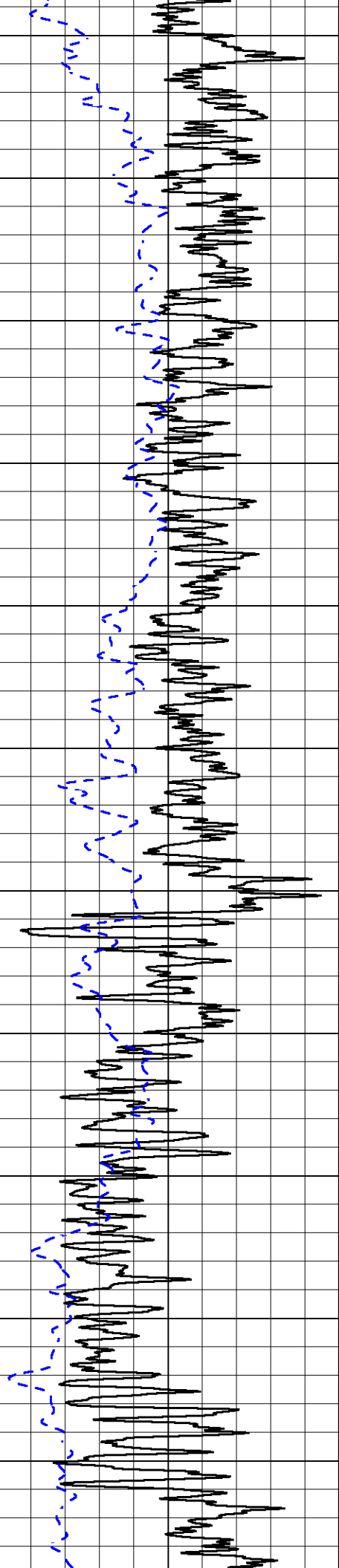
MAIN PASS

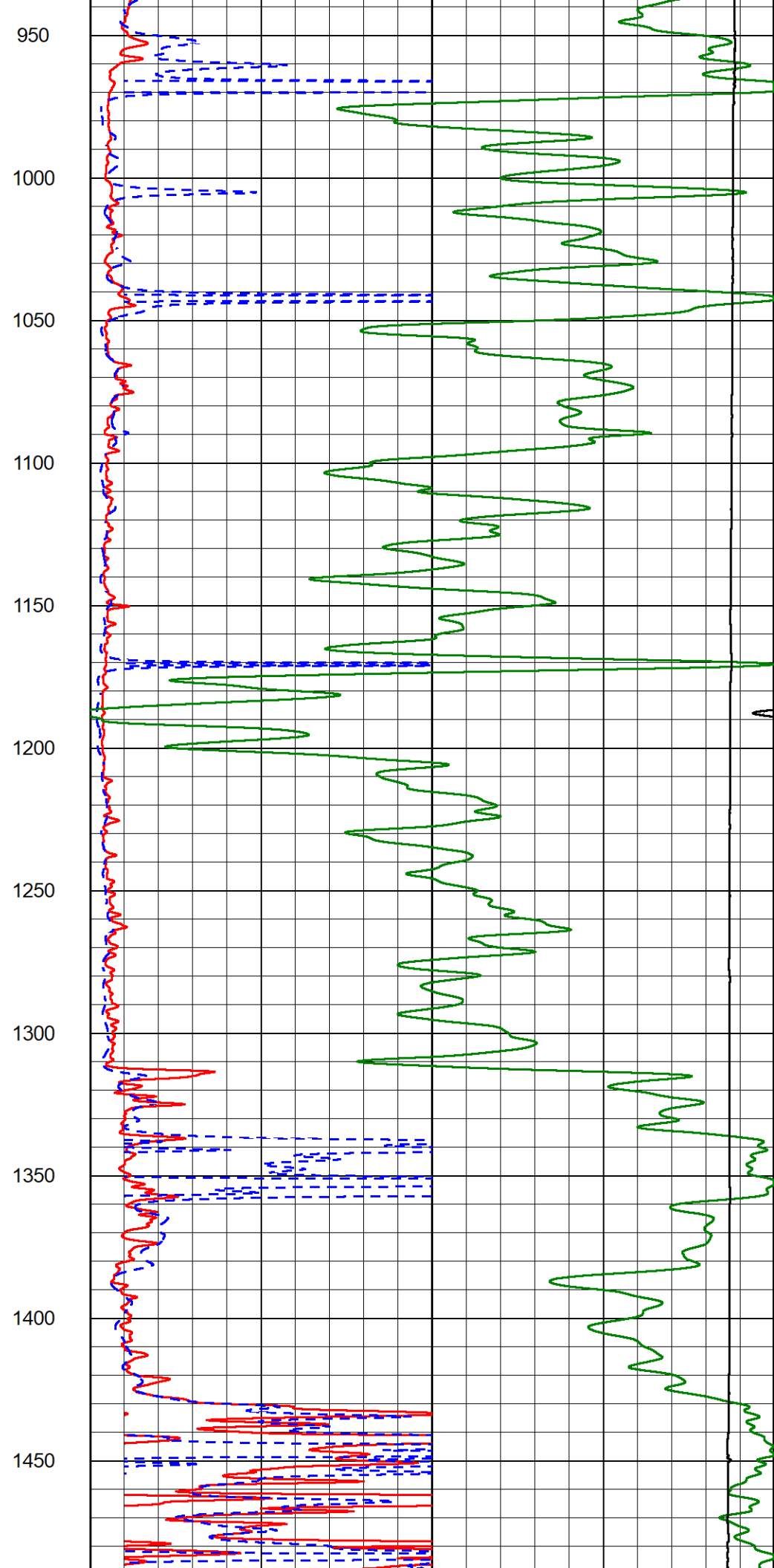
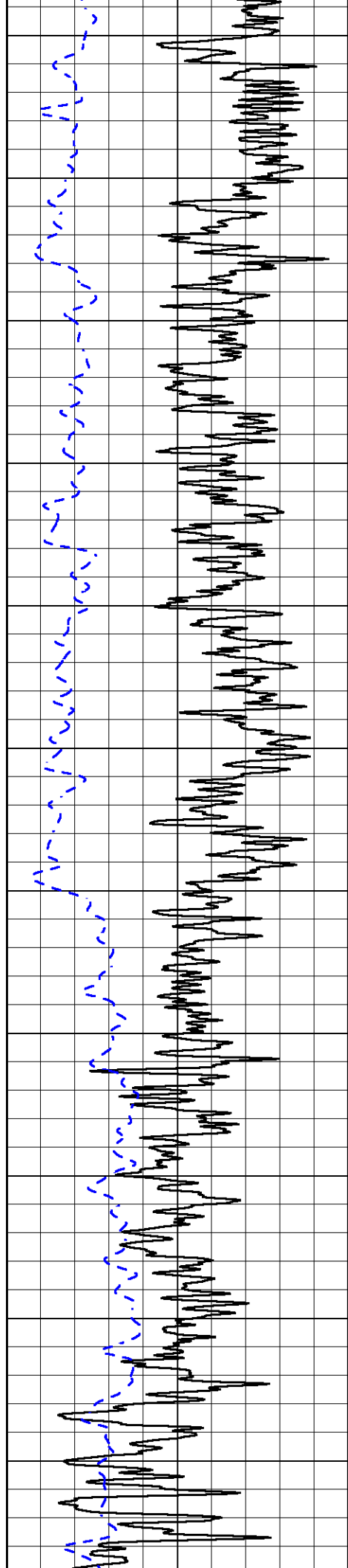
Database File cambell energy_jpc #2.db
 Dataset Pathname STKML/run1/pass4.2
 Presentation Format _dil2in
 Dataset Creation Sat Dec 09 20:48:31 2023
 Charted by Depth in Feet scaled 1:600

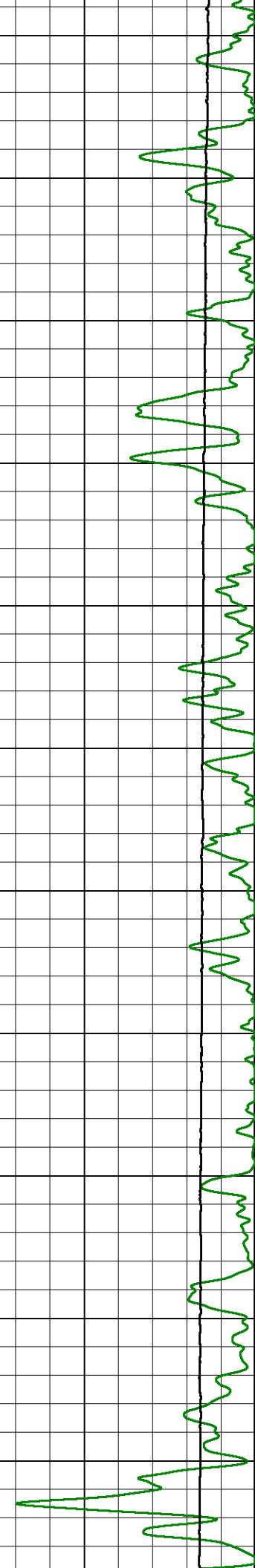
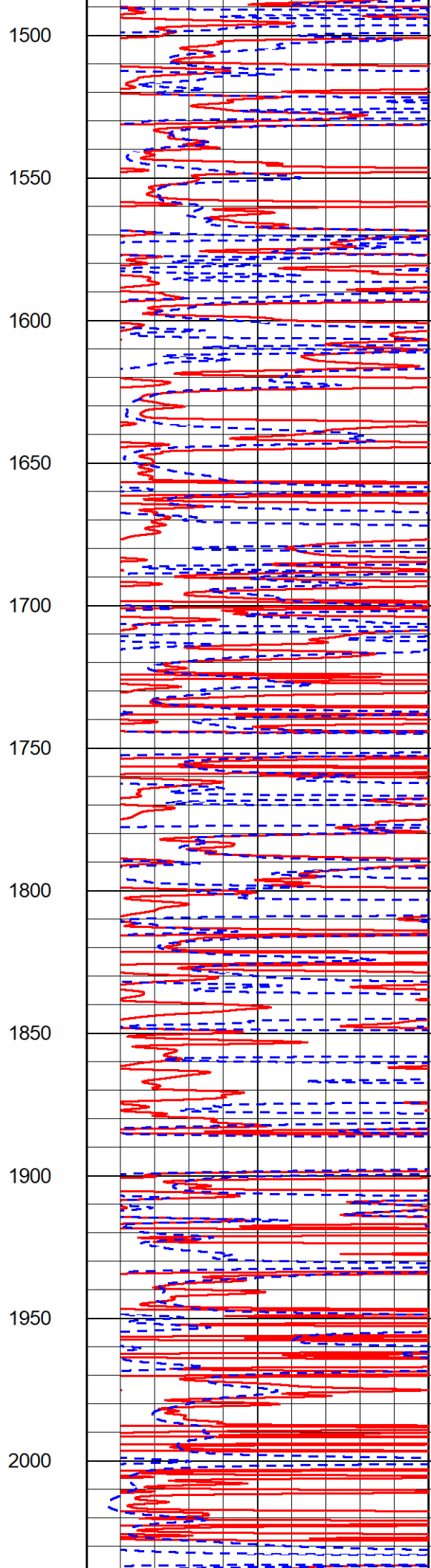
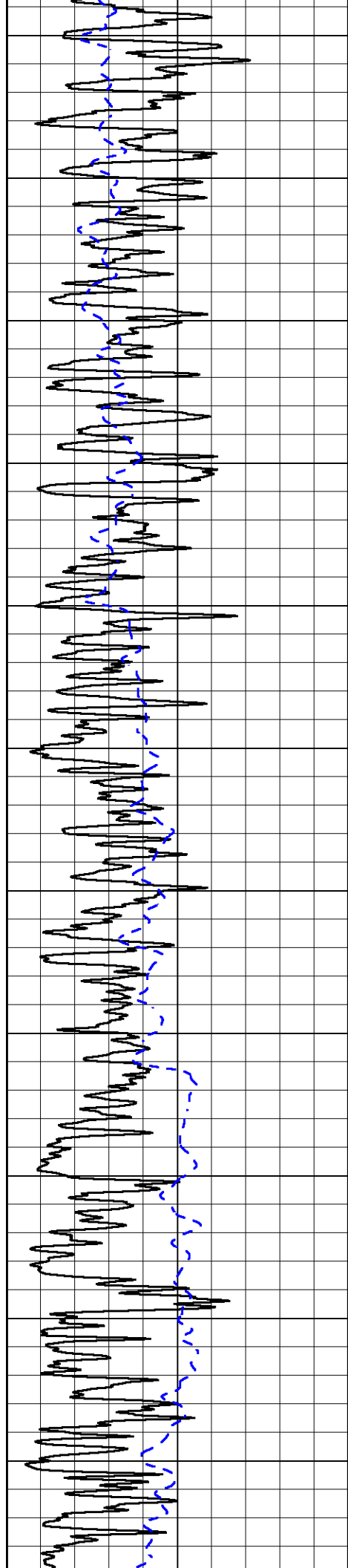
0	Gamma Ray (GAPI)	150
-200	SP (mV)	0

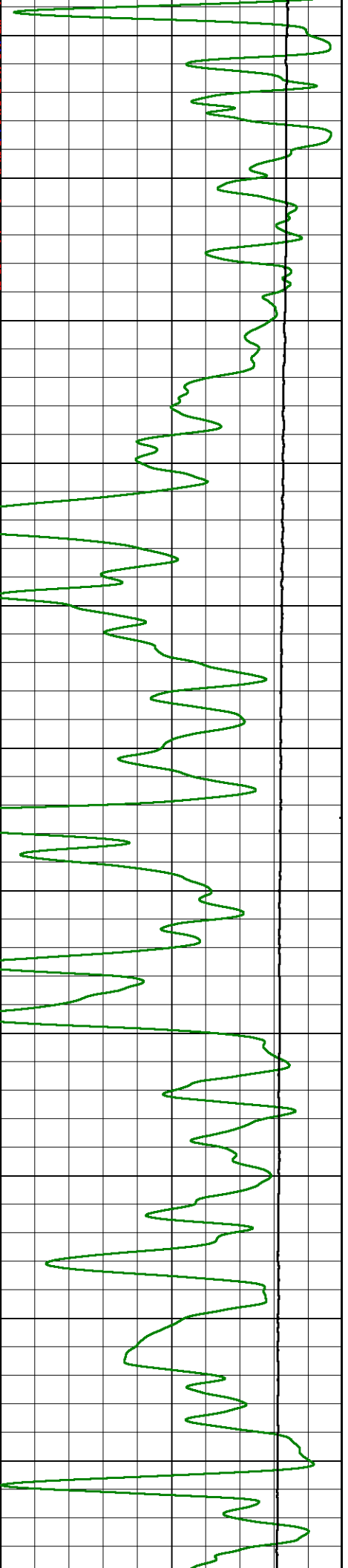
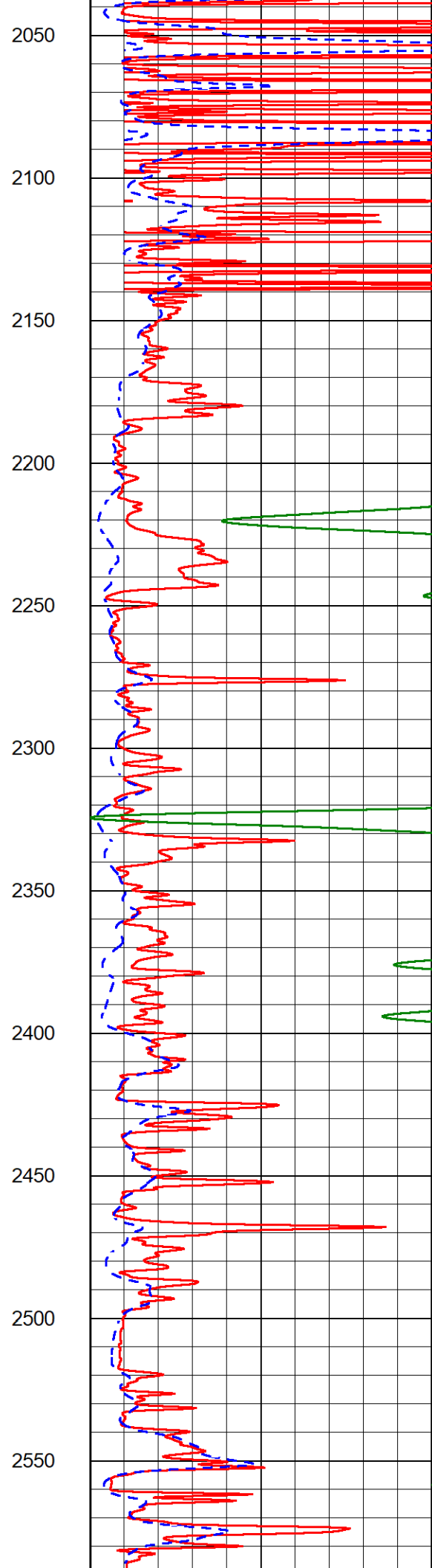
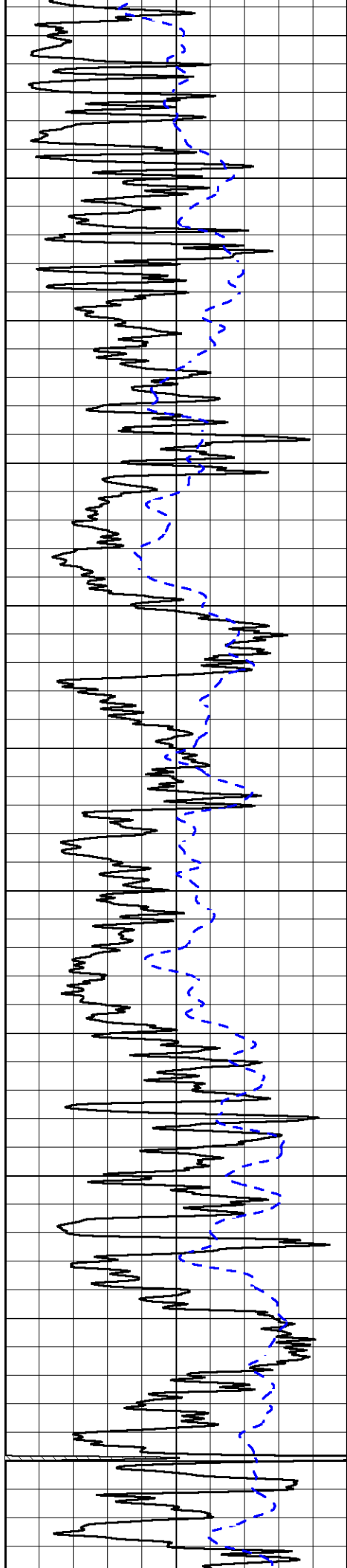
1000	Conductivity (mmho/m)	0
15000	Line Tension (lb)	0
0	Shallow Resistivity (Ohm-m)	50
0	Deep Resistivity (Ohm-m)	50
Shallow Resistivity		
50	(Ohm-m)	200
50	Deep Resistivity (Ohm-m)	200

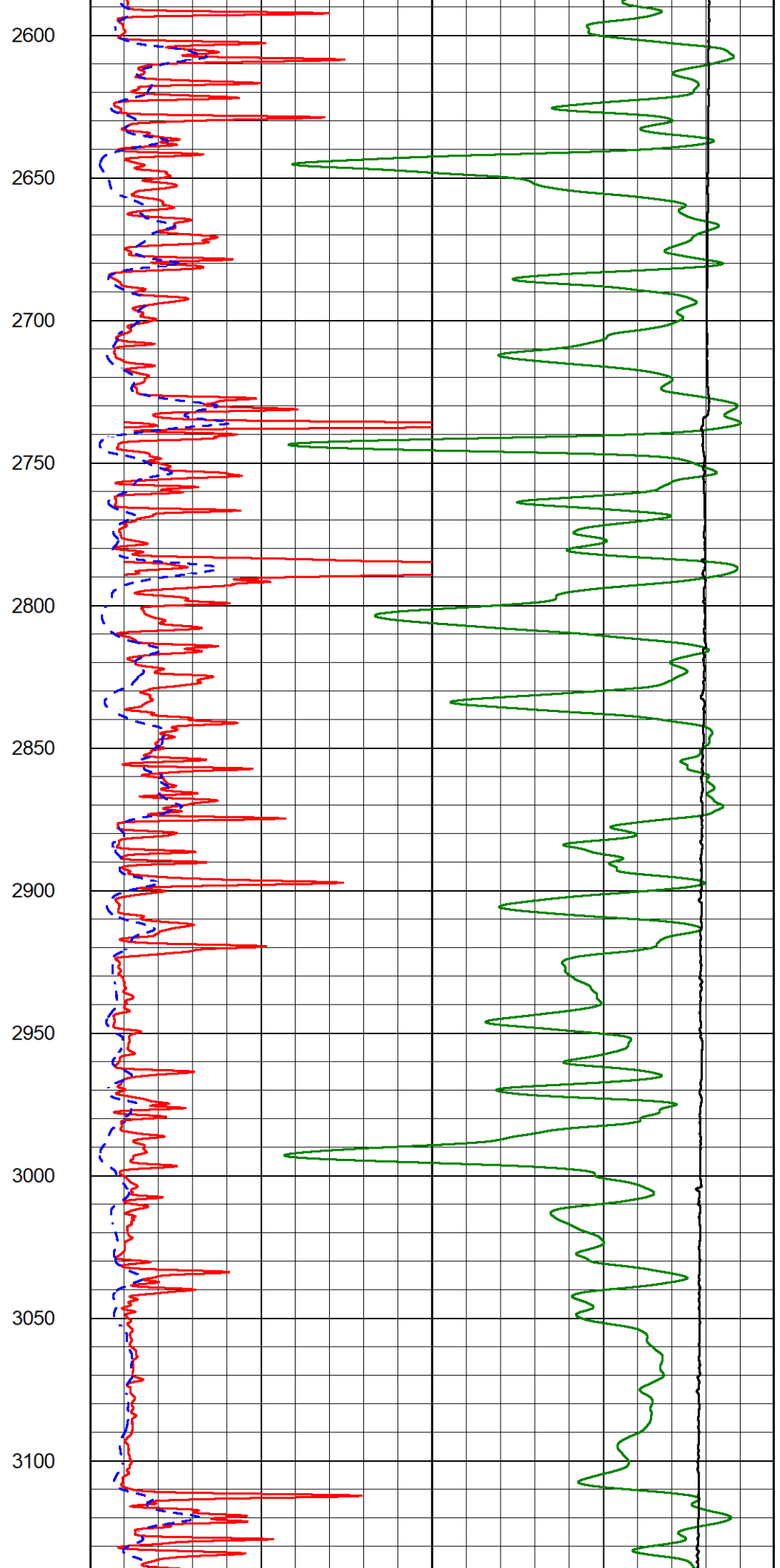
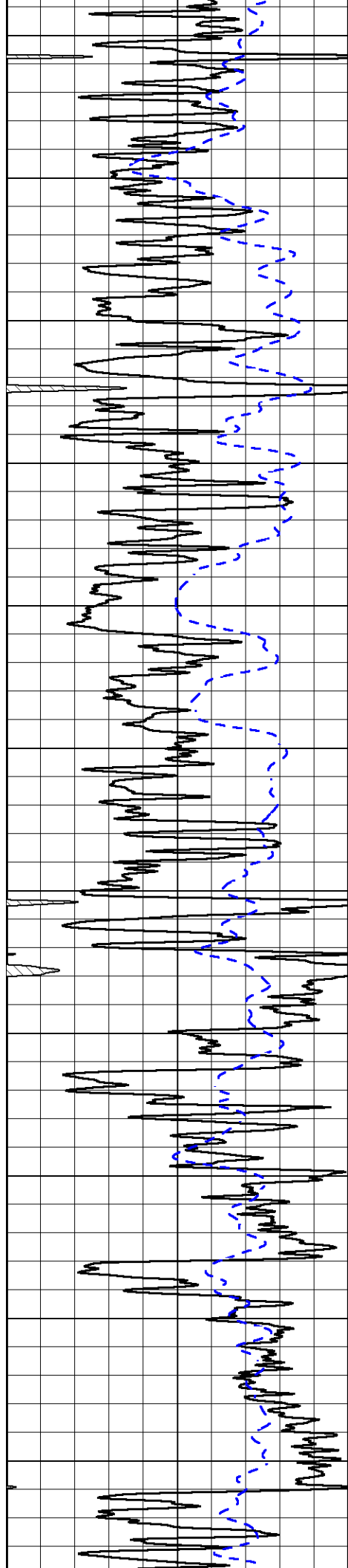


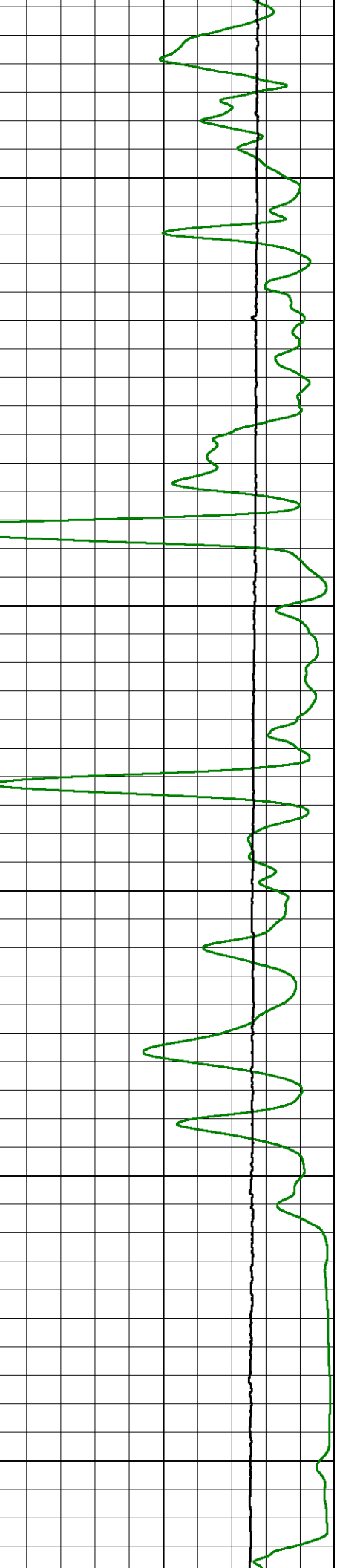
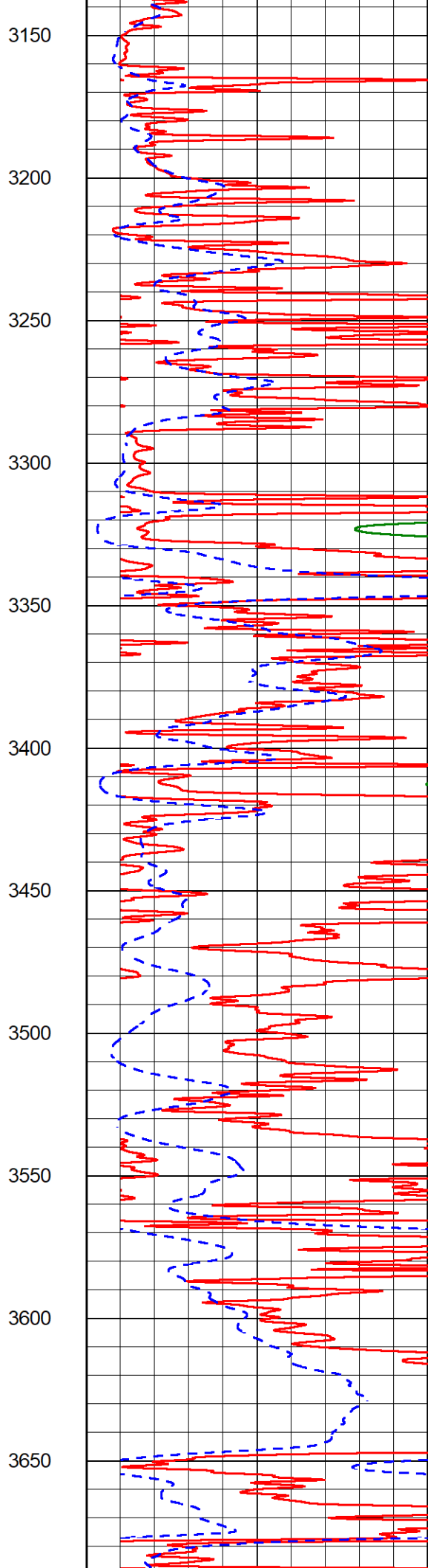
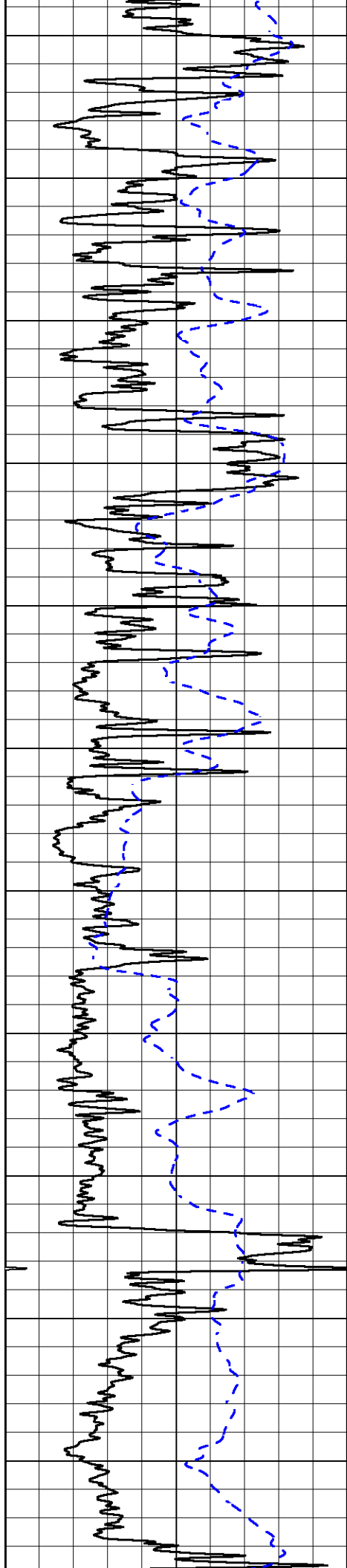


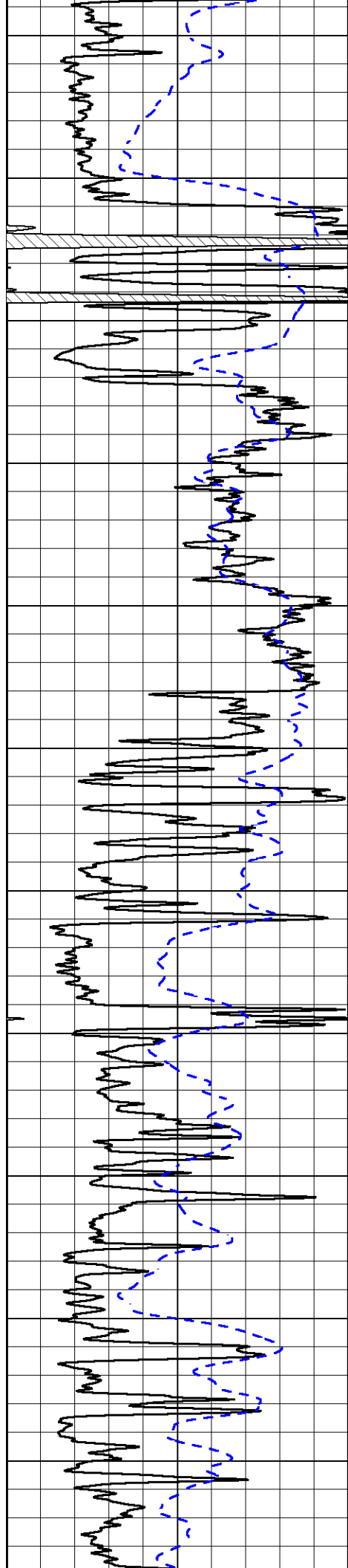












3700

3750

3800

3850

3900

3950

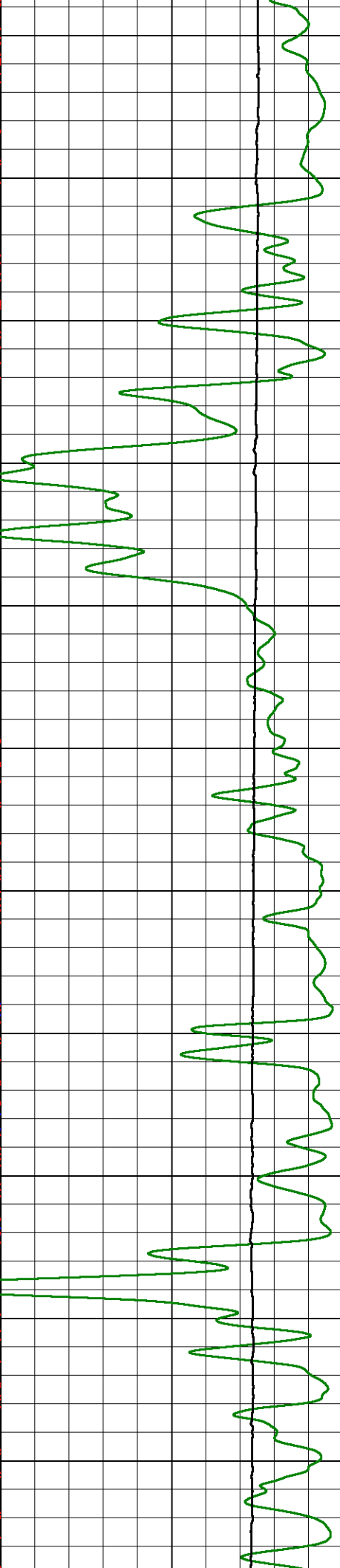
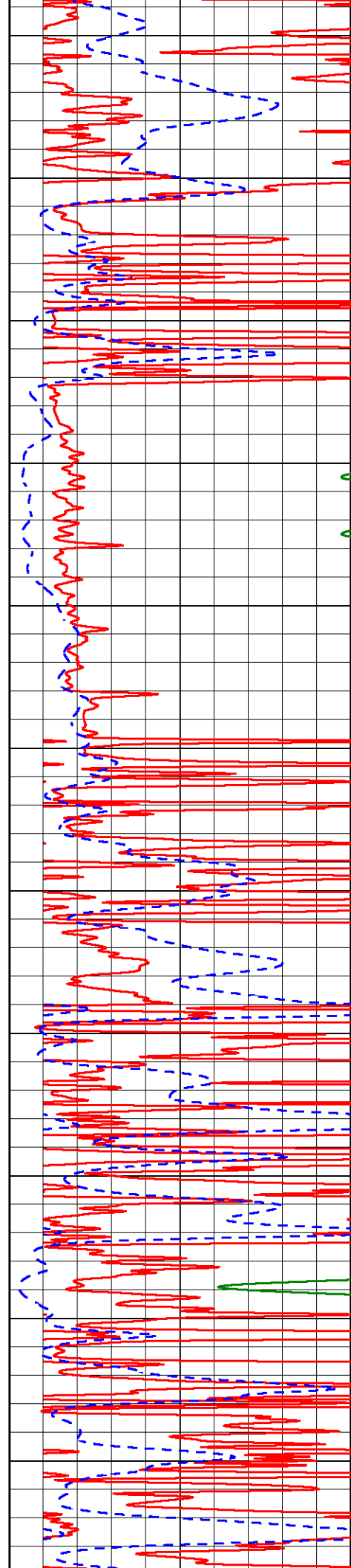
4000

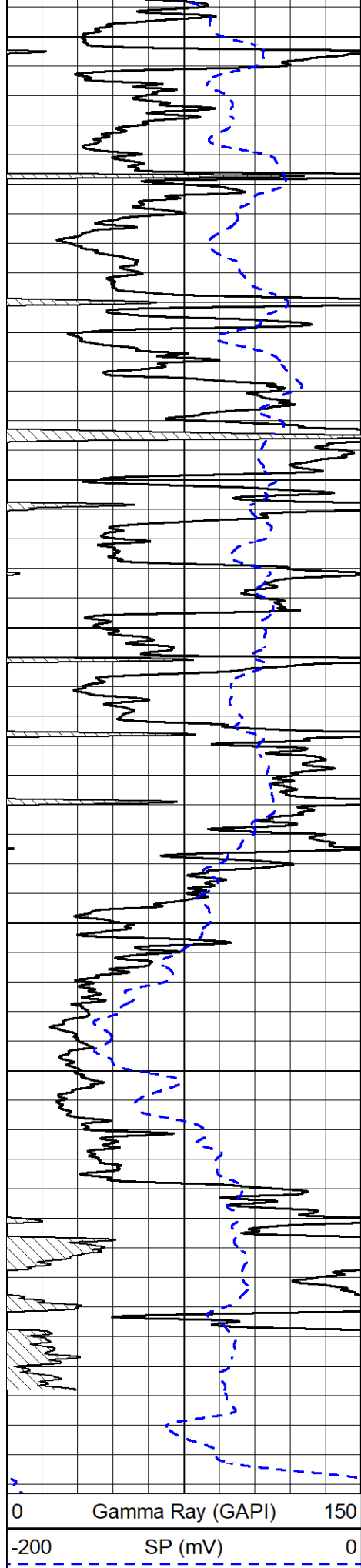
4050

4100

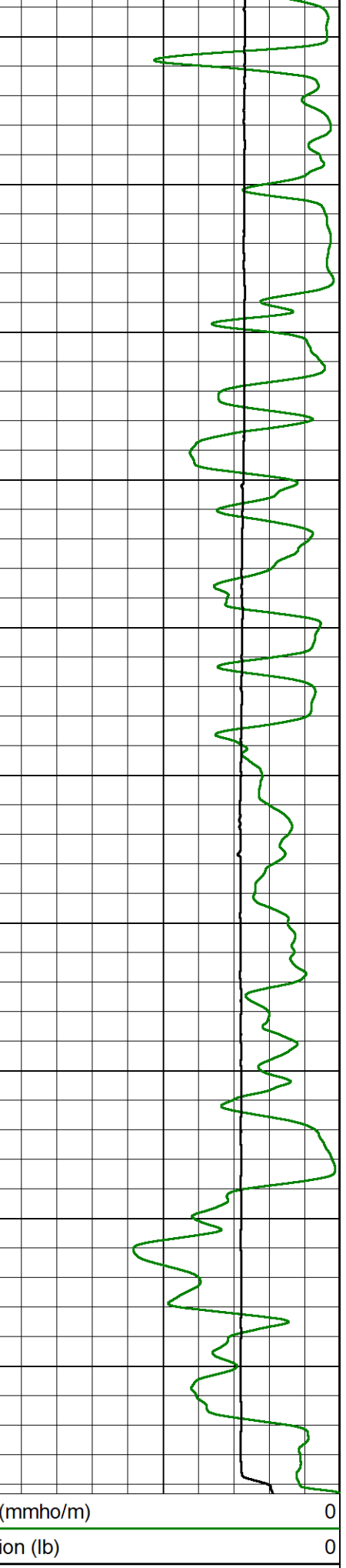
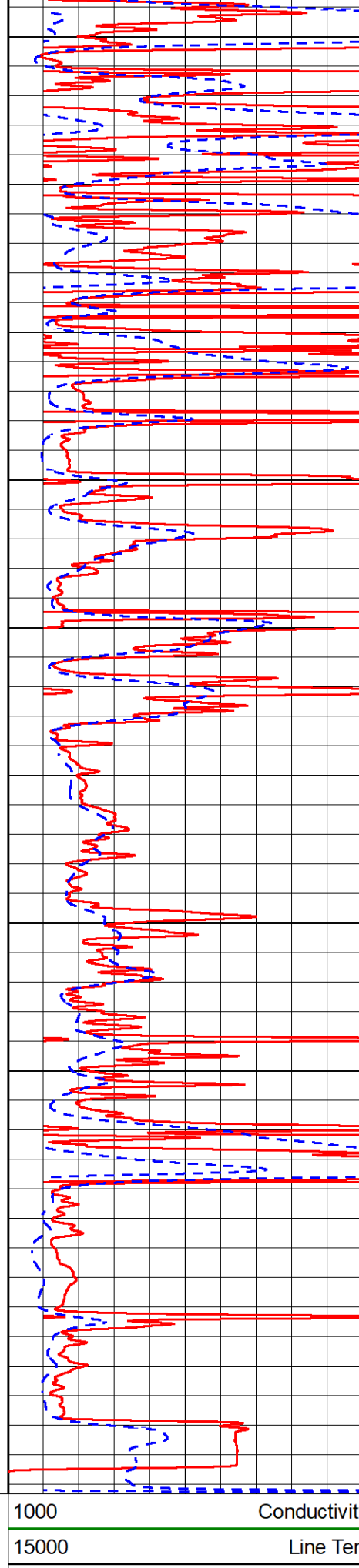
4150

4200





4250
4300
4350
4400
4450
4500
4550
4600
4650
4700



0 Gamma Ray (GAPI) 150
-200 SP (mV) 0

1000 Conductivity (mmho/m) 15000
0 Line Tension (lb) 15000

0 Shallow Resistivity (Ohm-m) 50

0 Deep Resistivity (Ohm-m) 50

Shallow Resistivity		
50	(Ohm-m)	200
50	Deep Resistivity (Ohm-m)	200



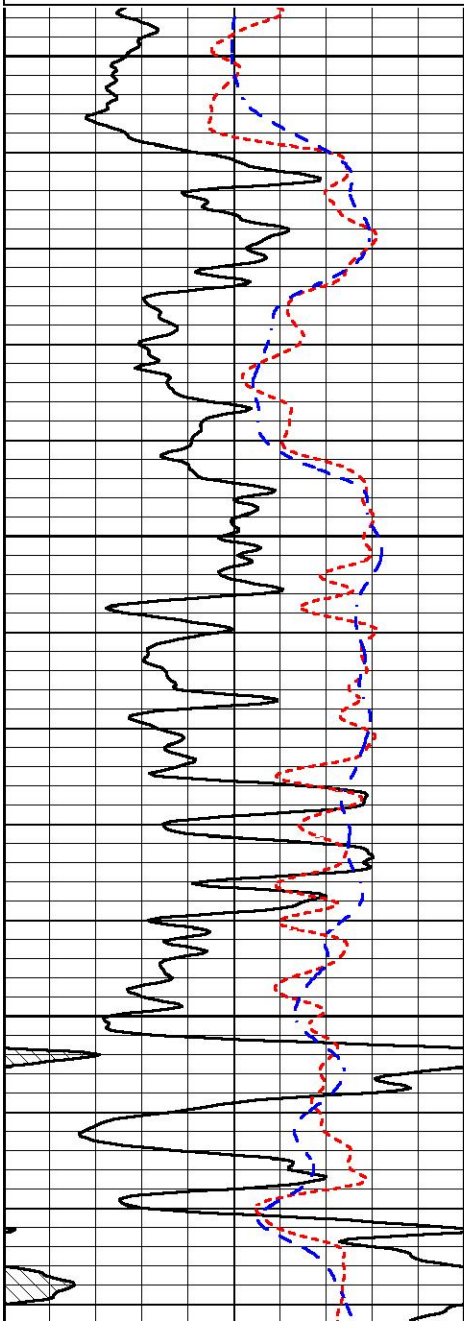
DETAIL SECTION

MAIN PASS

Database File cambell energy_jpc #2.db
 Dataset Pathname STKML/run1/pass4.1
 Presentation Format _dil
 Dataset Creation Sat Dec 09 20:48:02 2023
 Charted by Depth in Feet scaled 1:240

0	Gamma Ray (GAPI)	150
50	RXORT	250
-200	SP (mV)	0

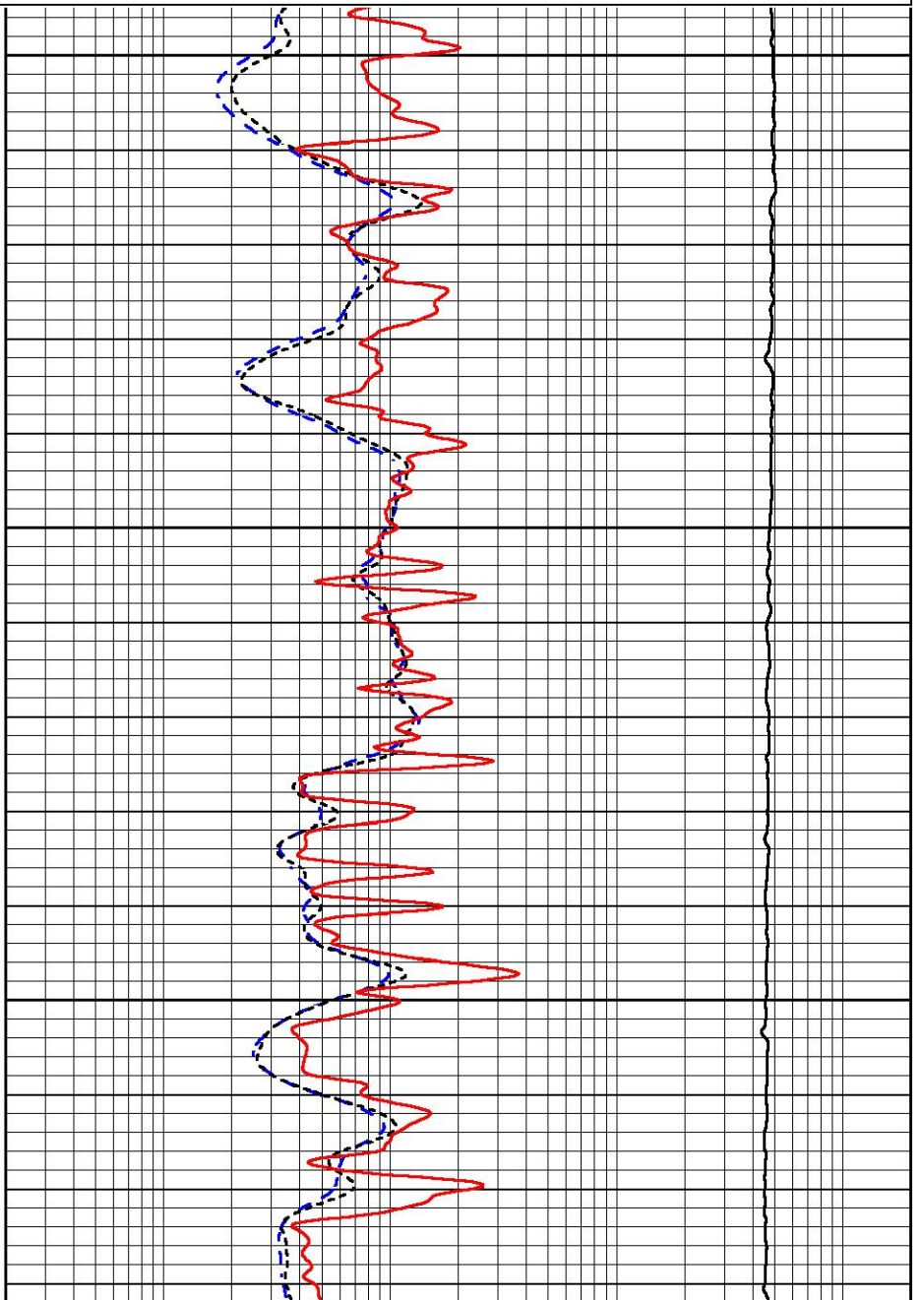
0.2	Deep Resistivity (Ohm-m)	2000
0.2	Medium Resistivity (Ohm-m)	2000
0.2	RLL3 (Ohm-m)	2000
10000	Line Tension (lb)	0

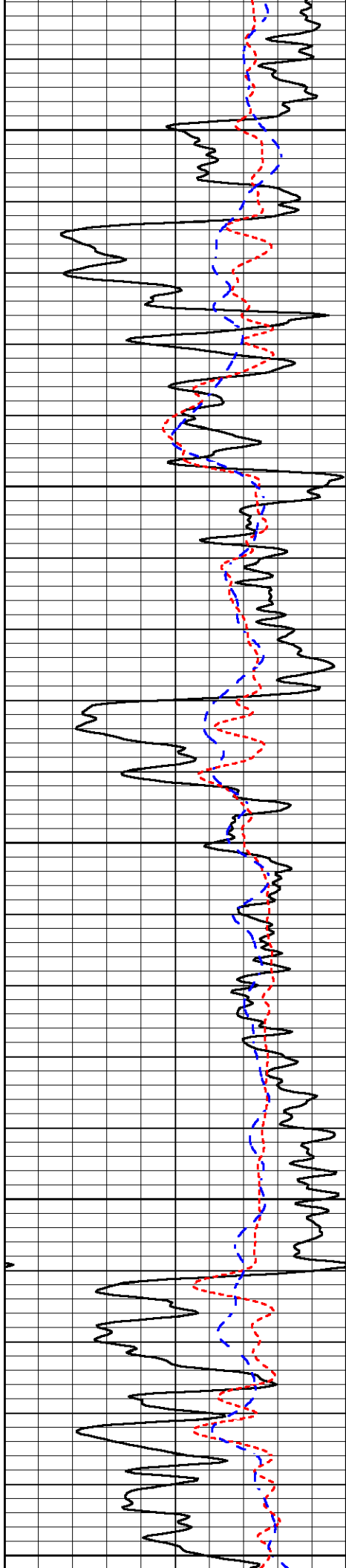


2800

2850

2900





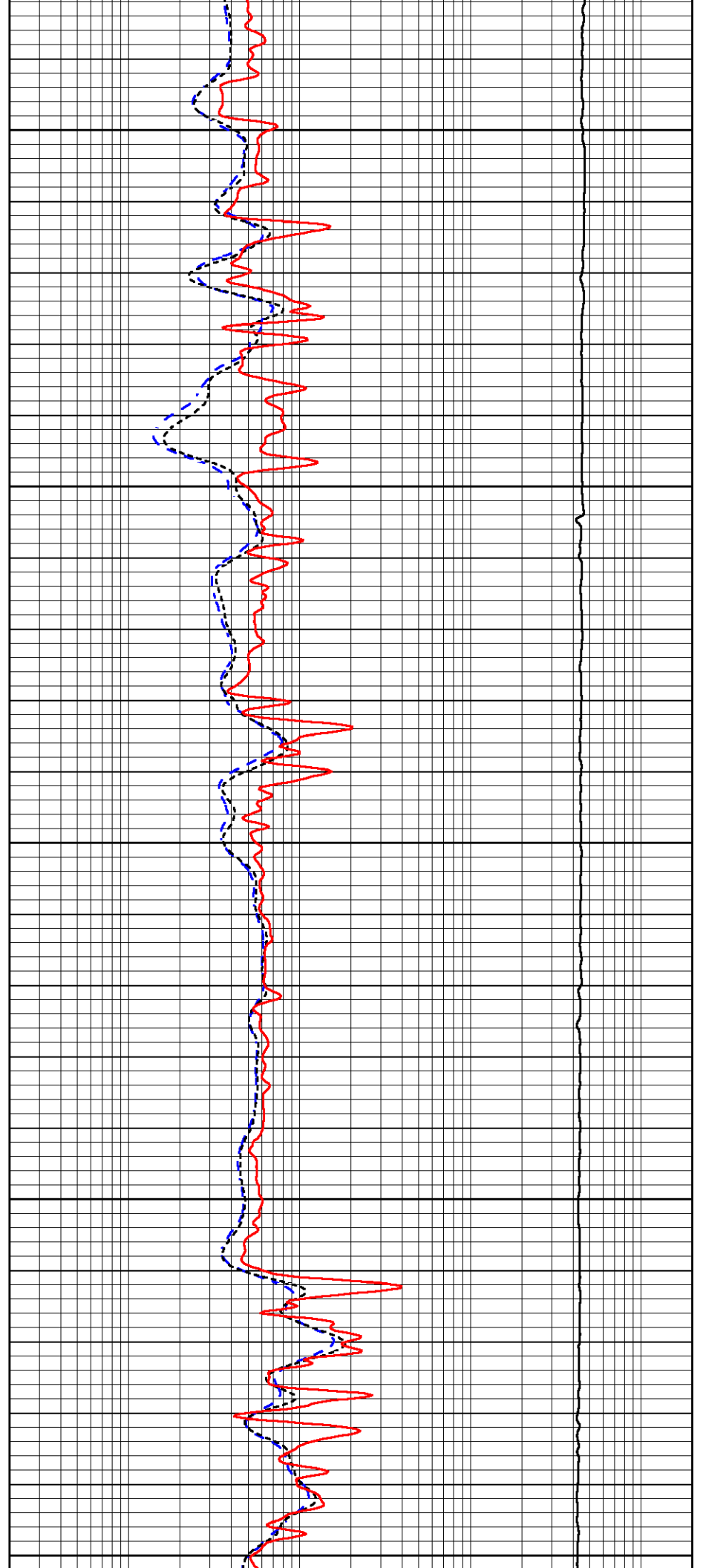
2950

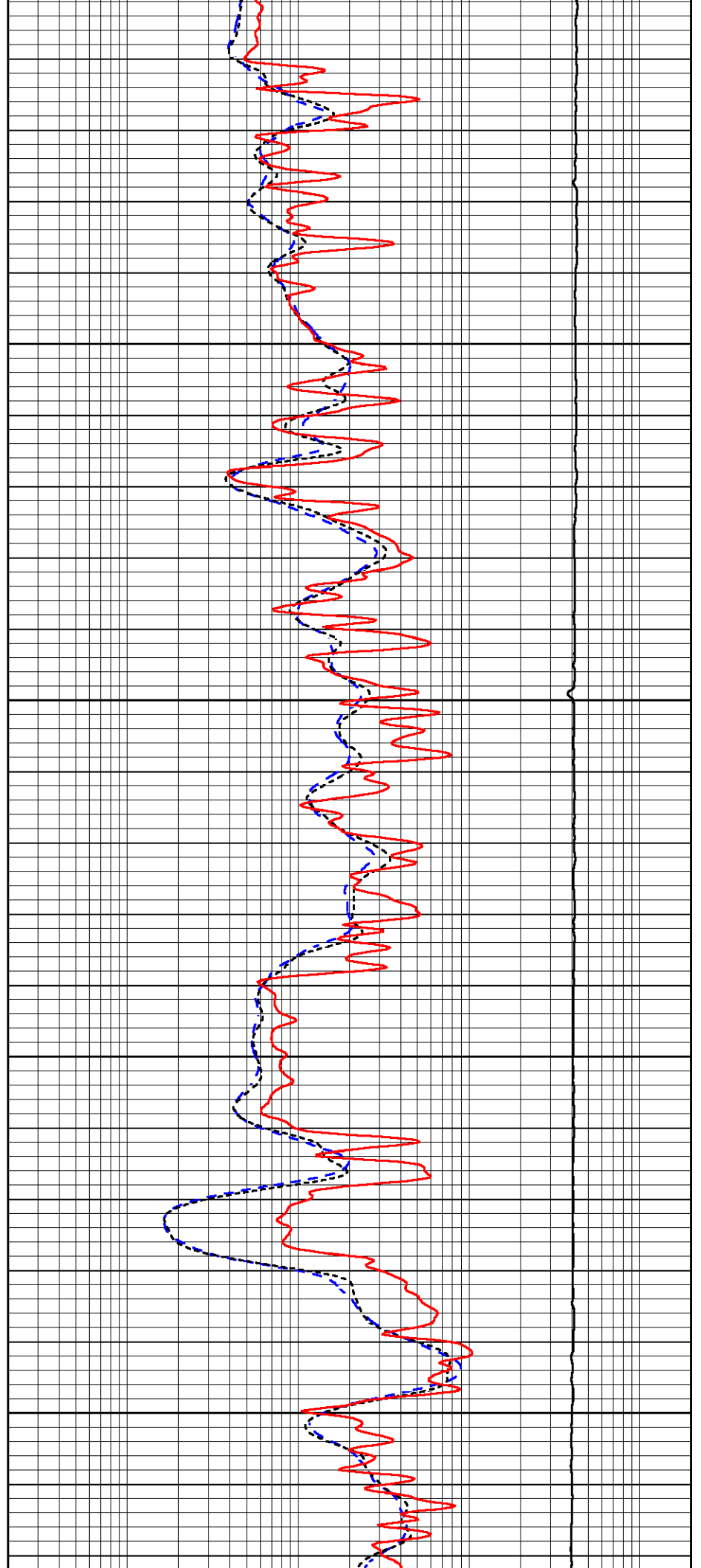
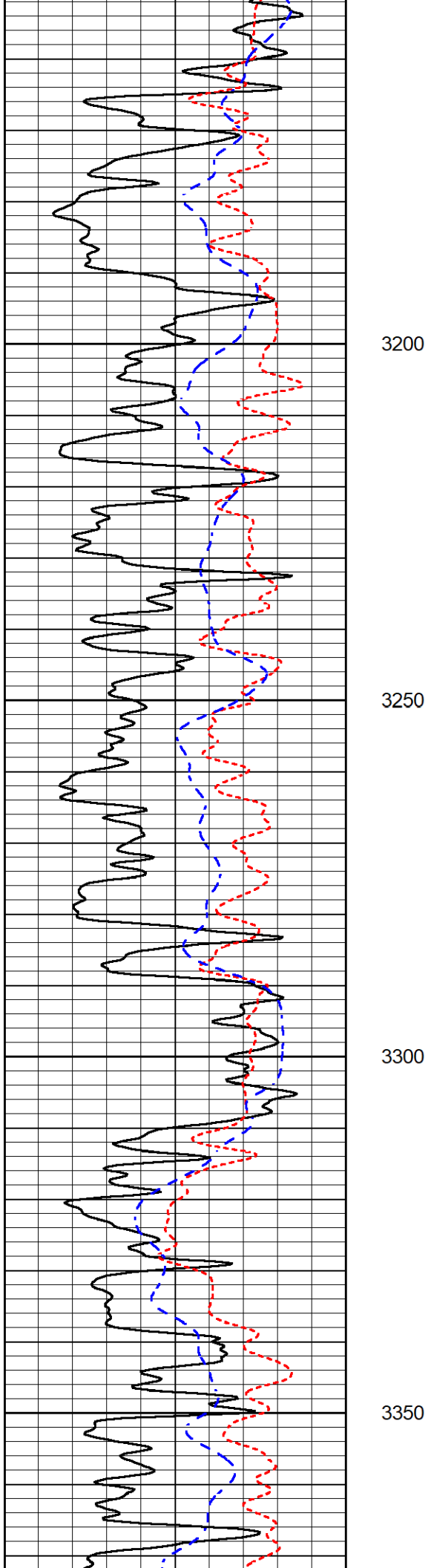
3000

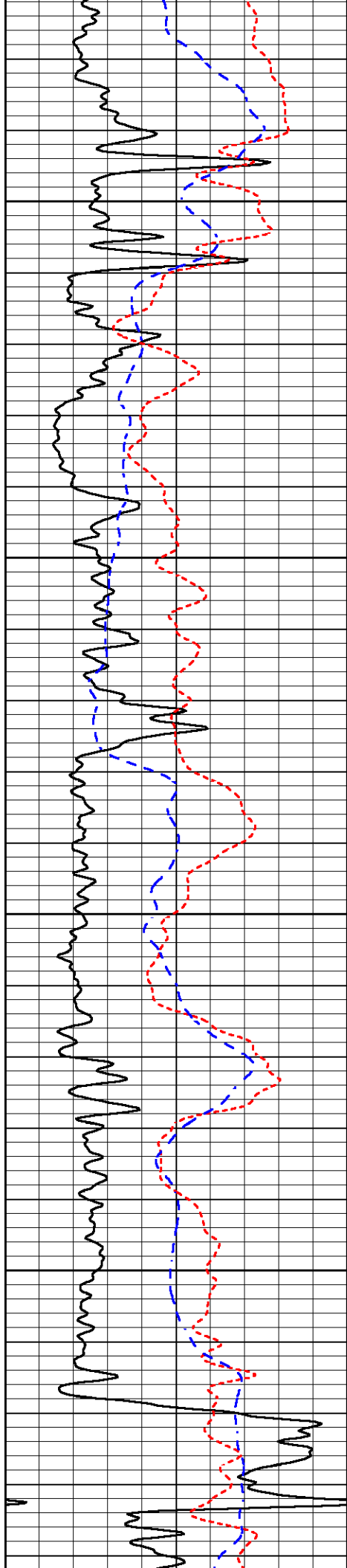
3050

3100

3150





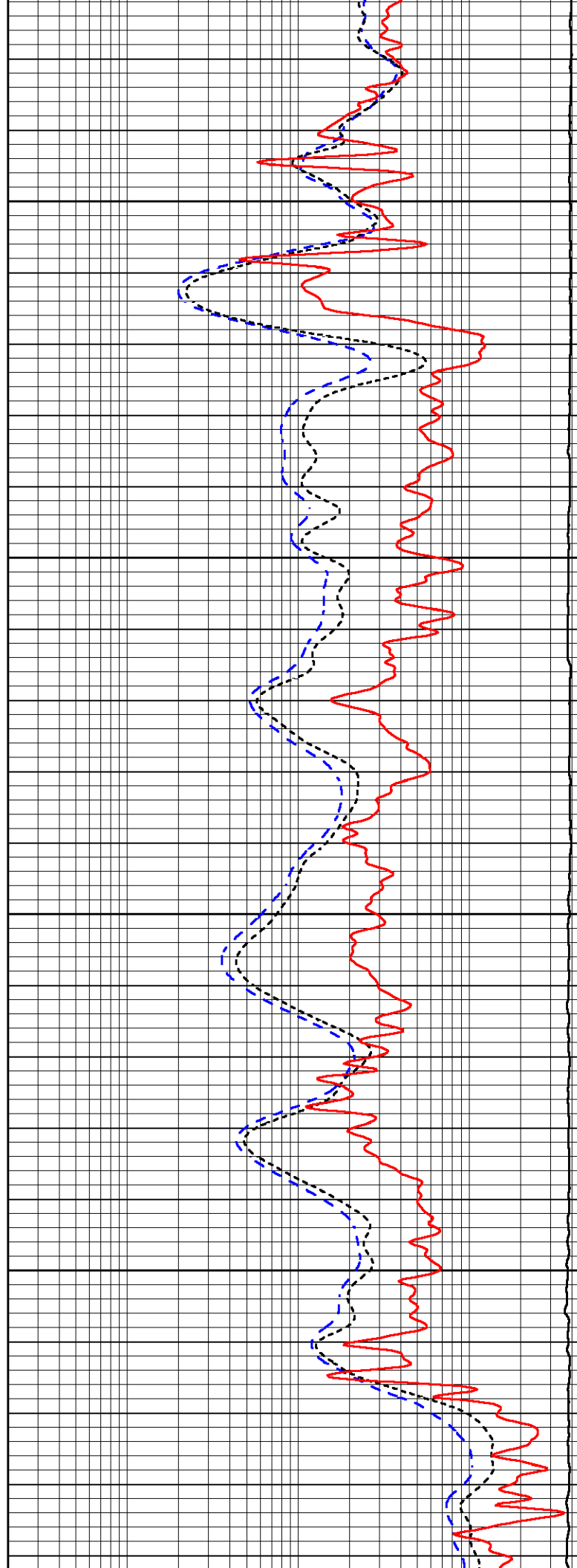


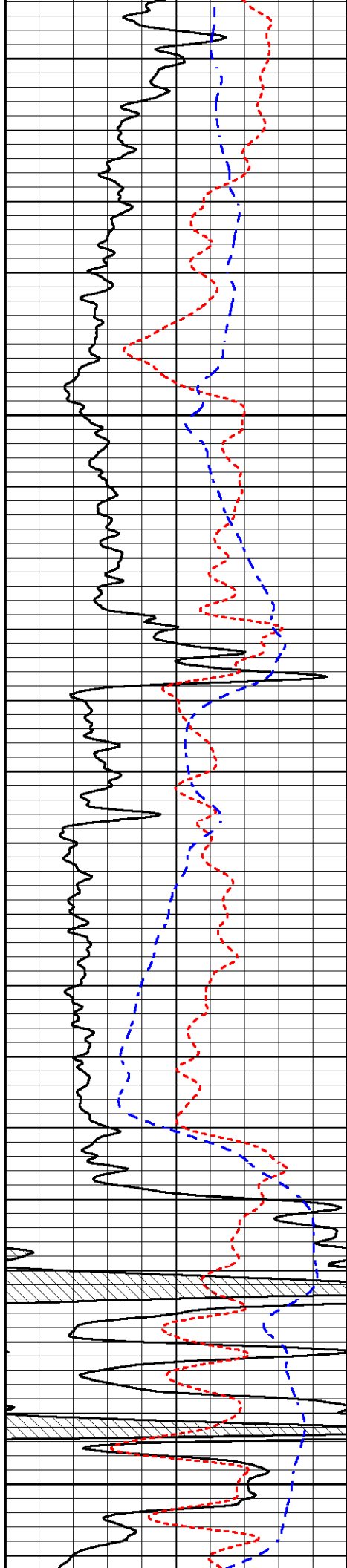
3400

3450

3500

3550





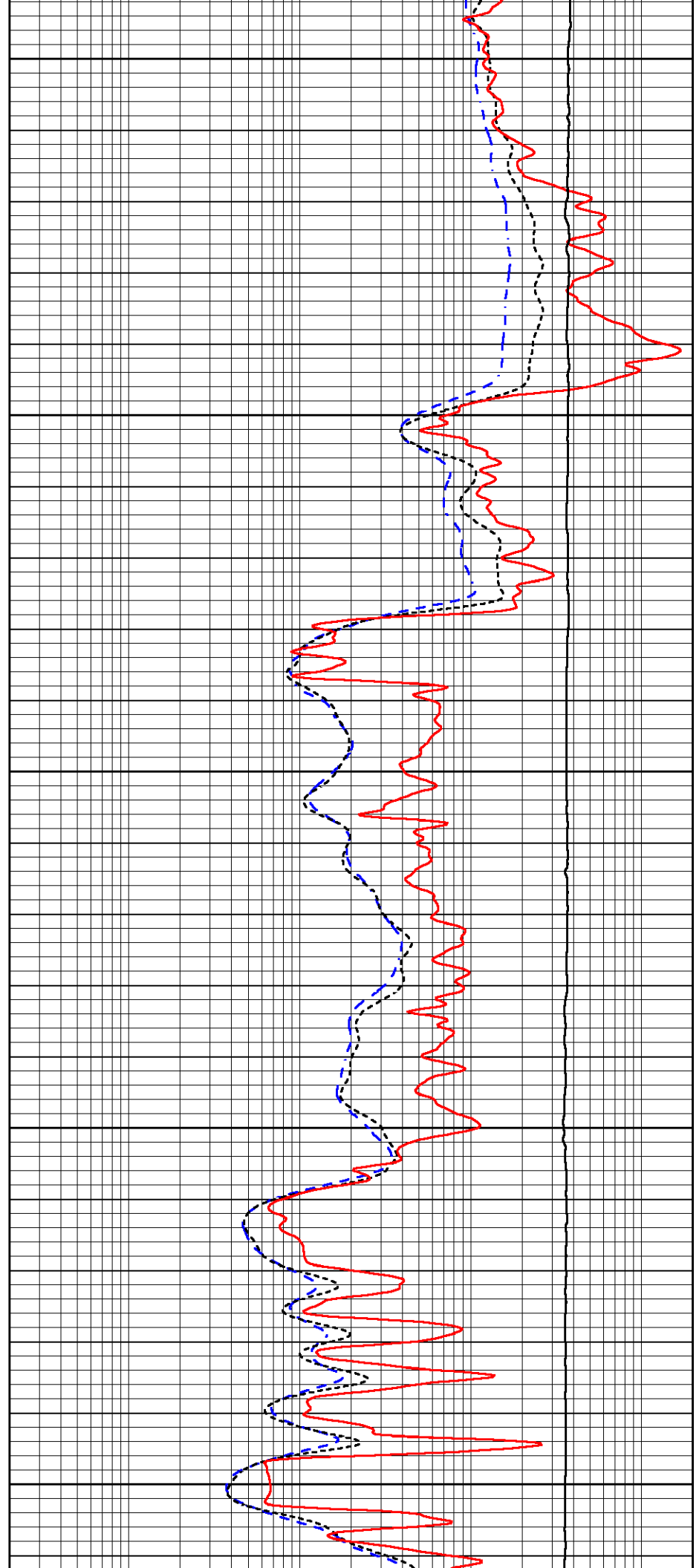
3600

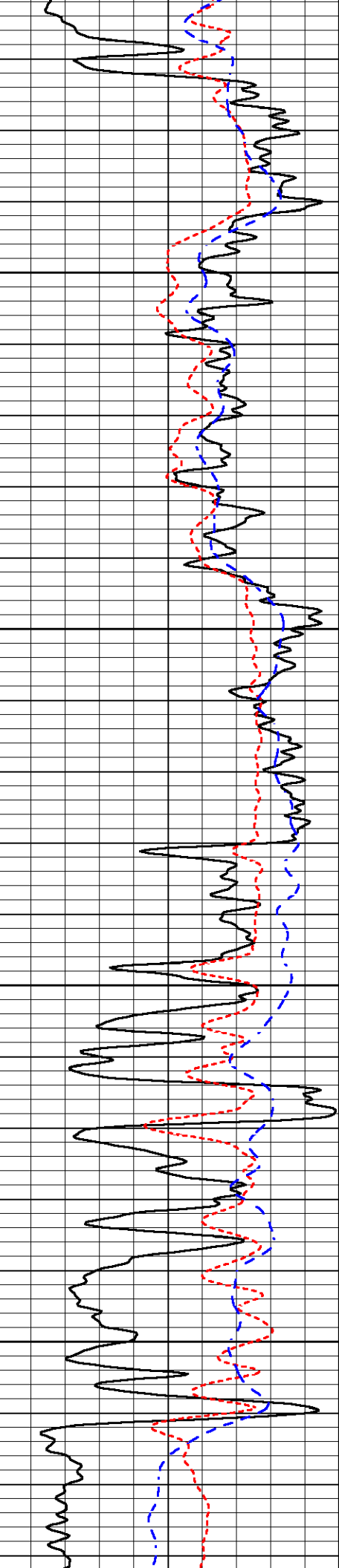
3650

3700

3750

3800



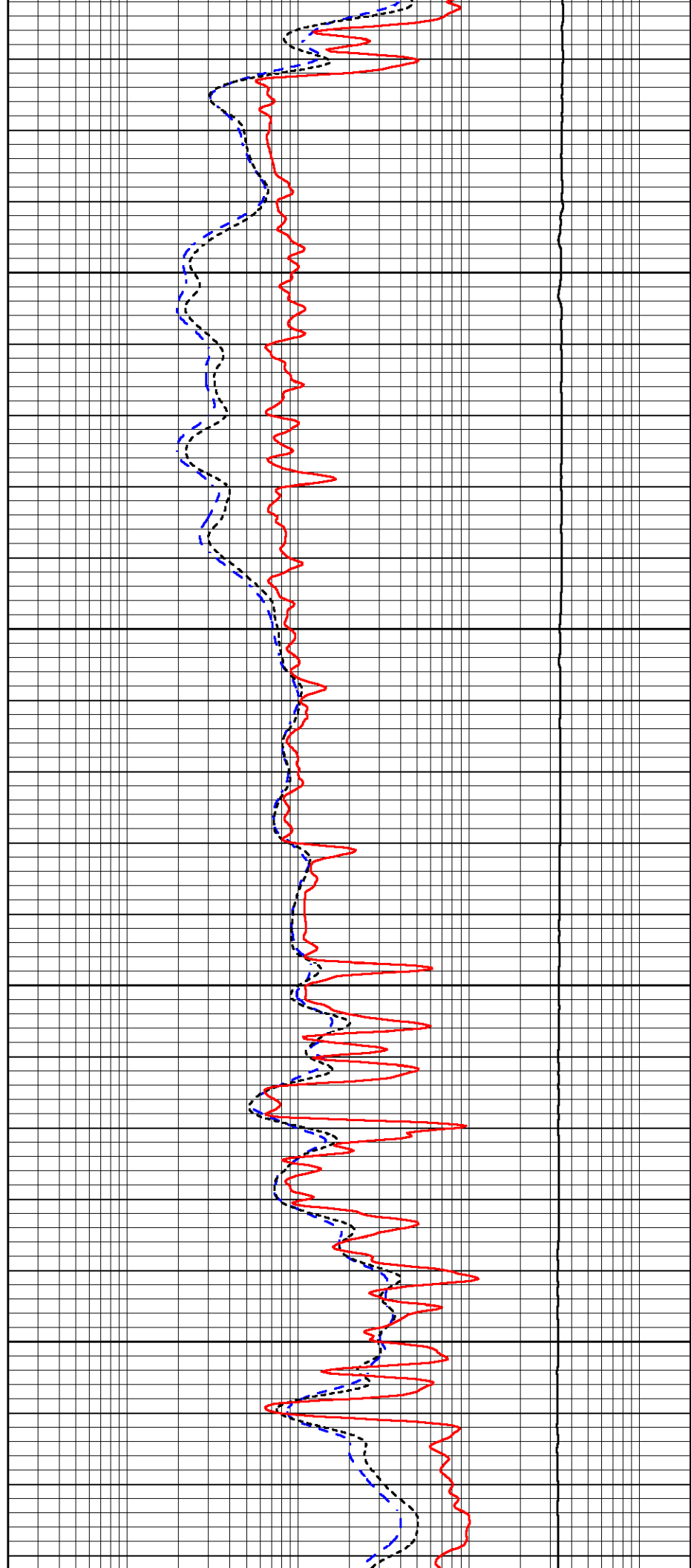


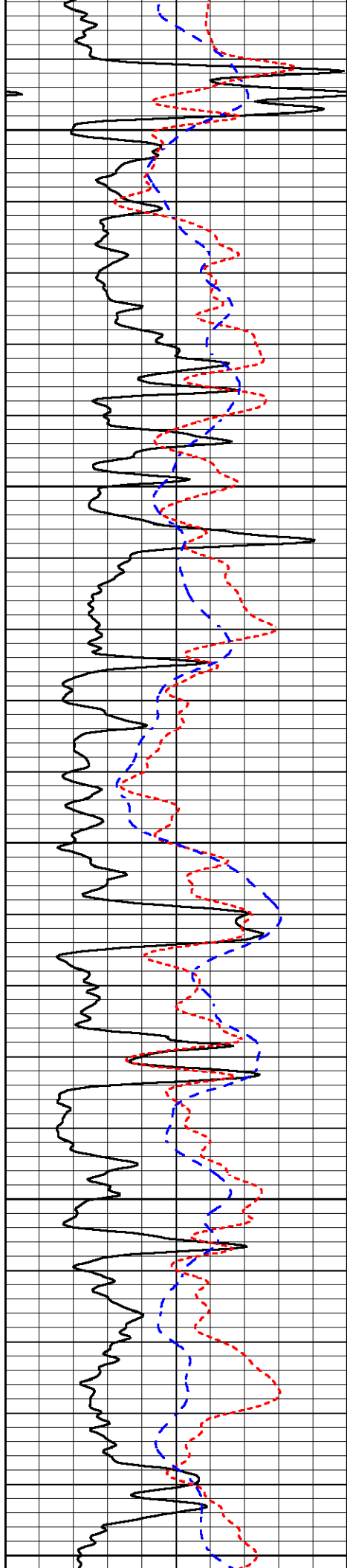
3850

3900

3950

4000





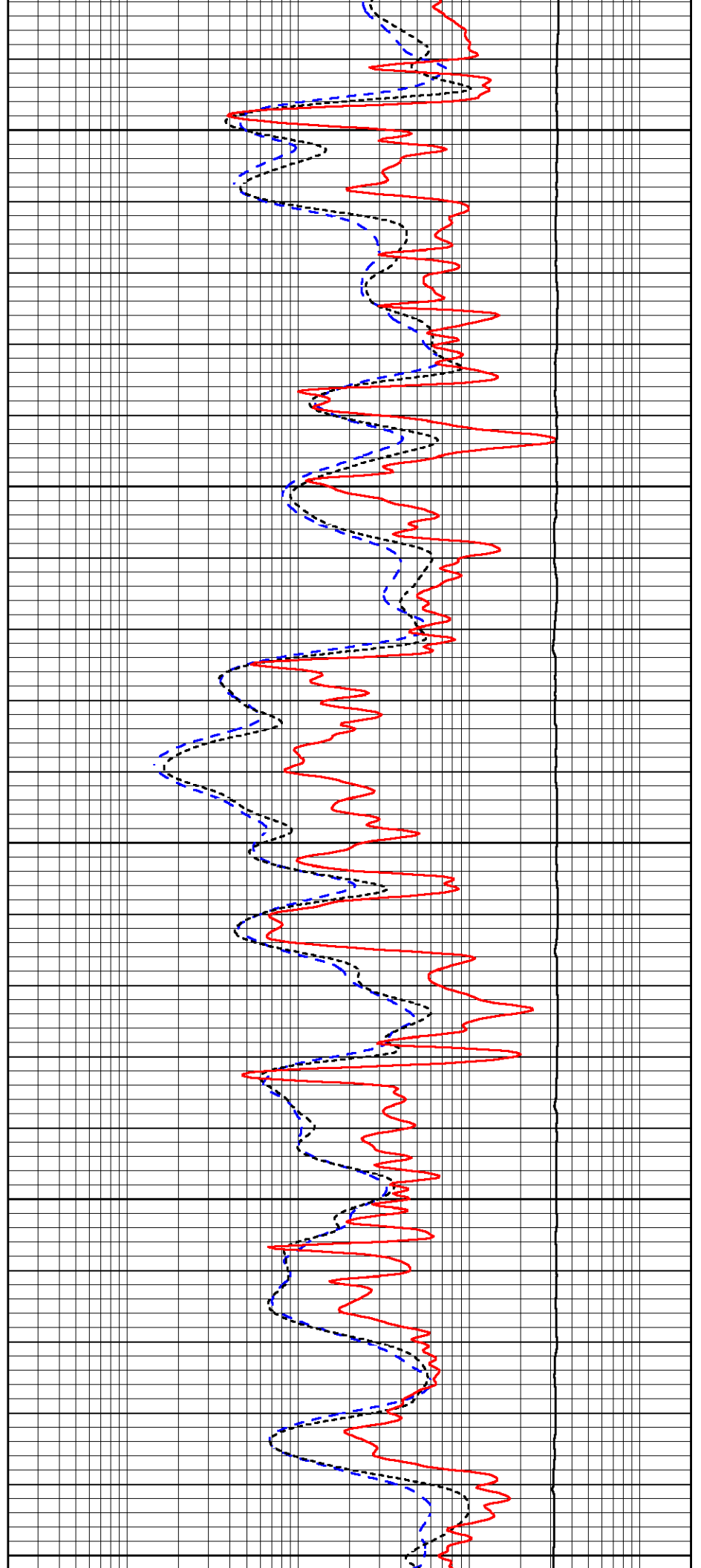
4050

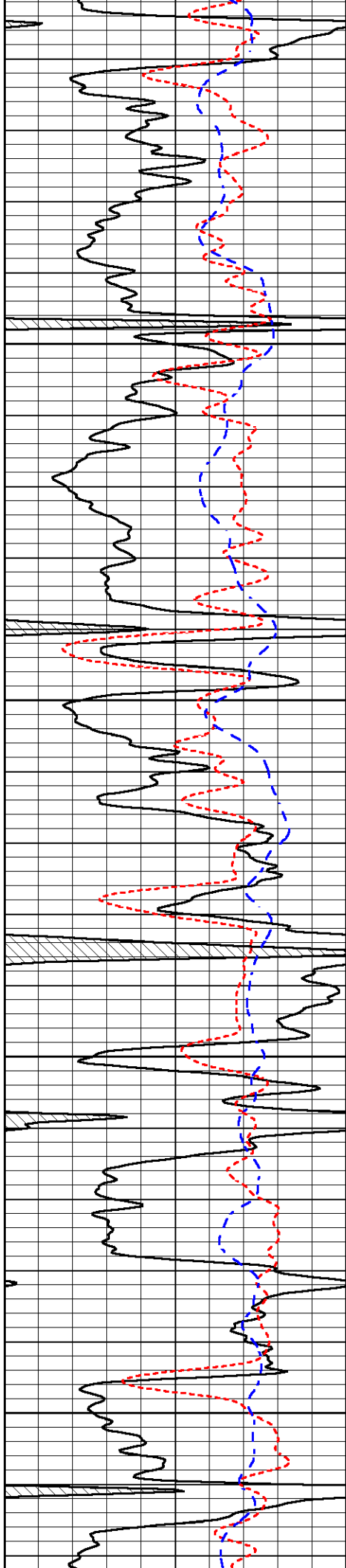
4100

4150

4200

4250



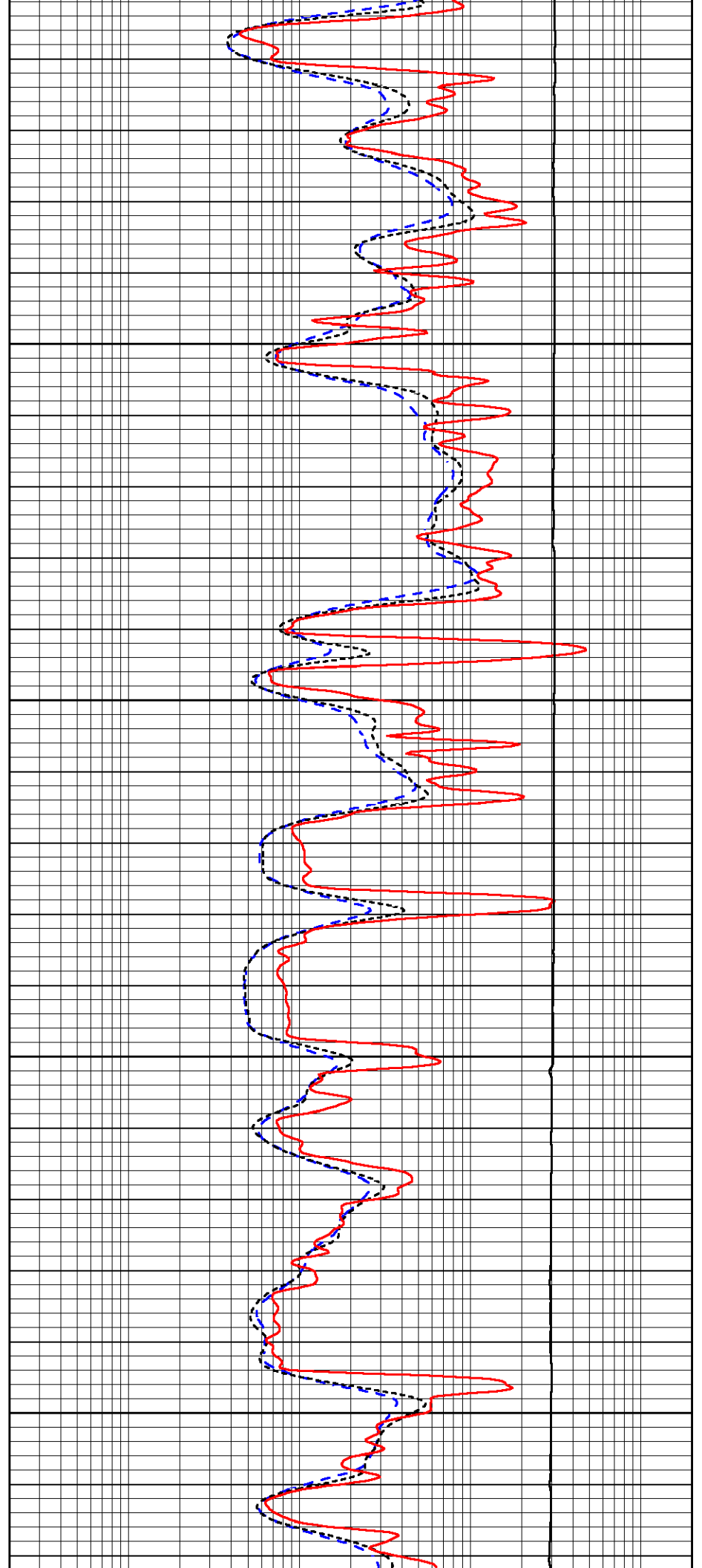


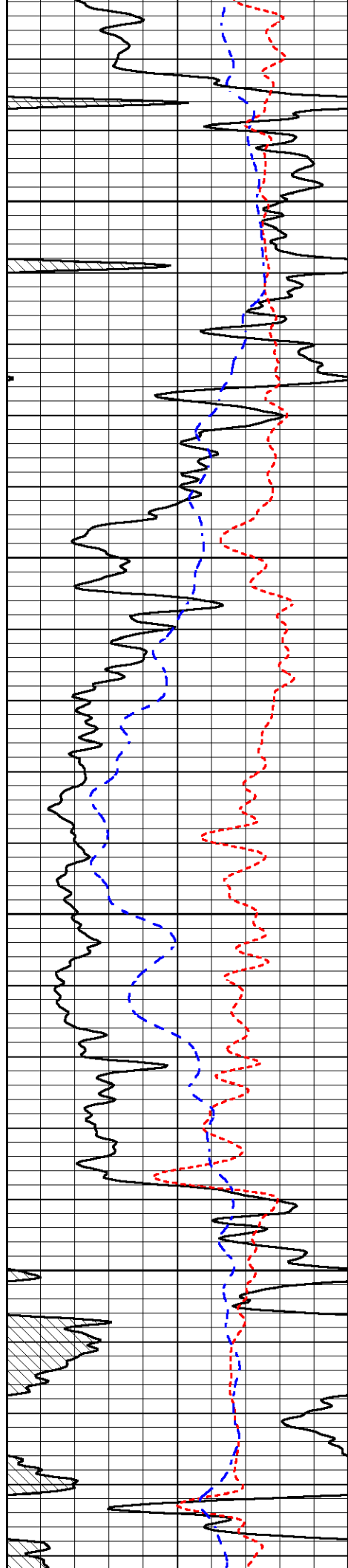
4300

4350

4400

4450



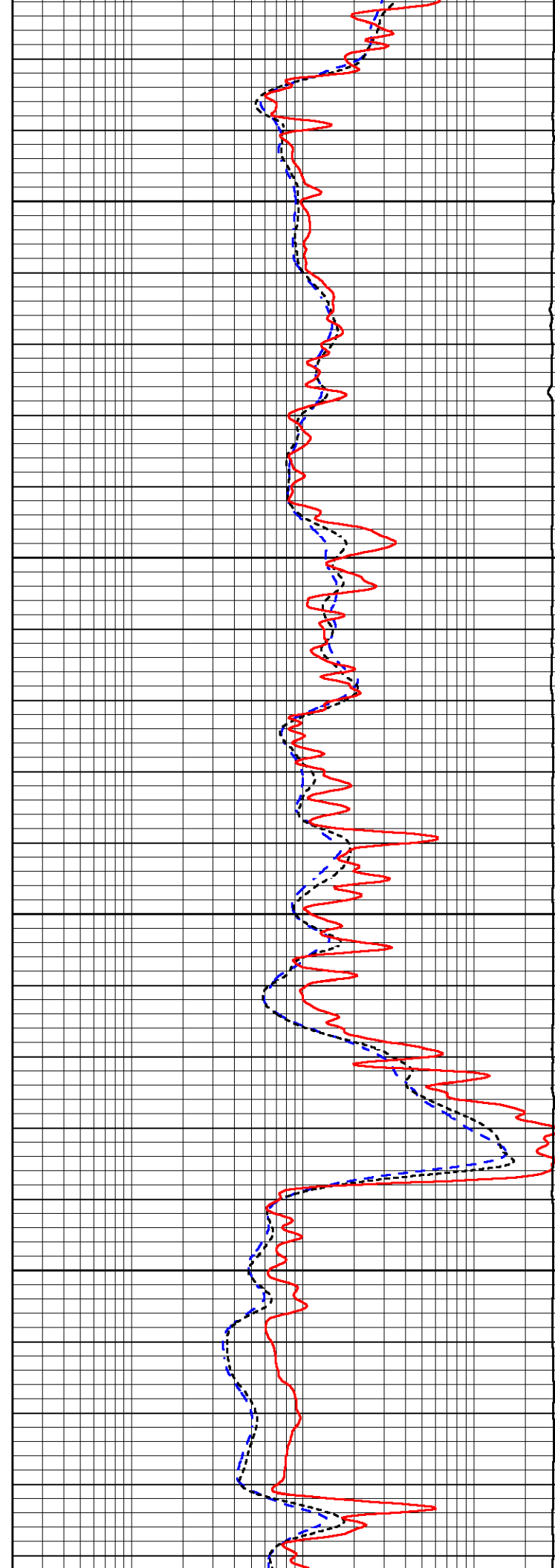


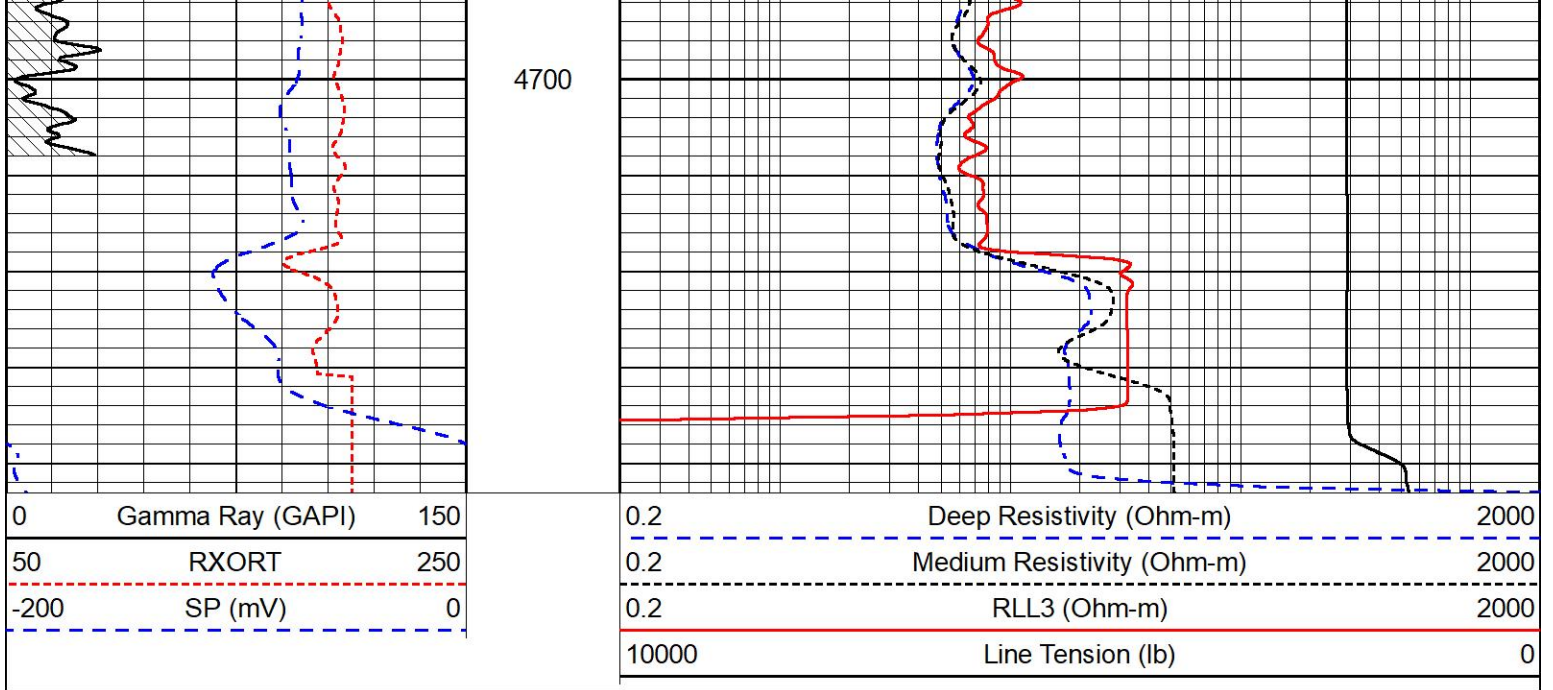
4500

4550

4600

4650



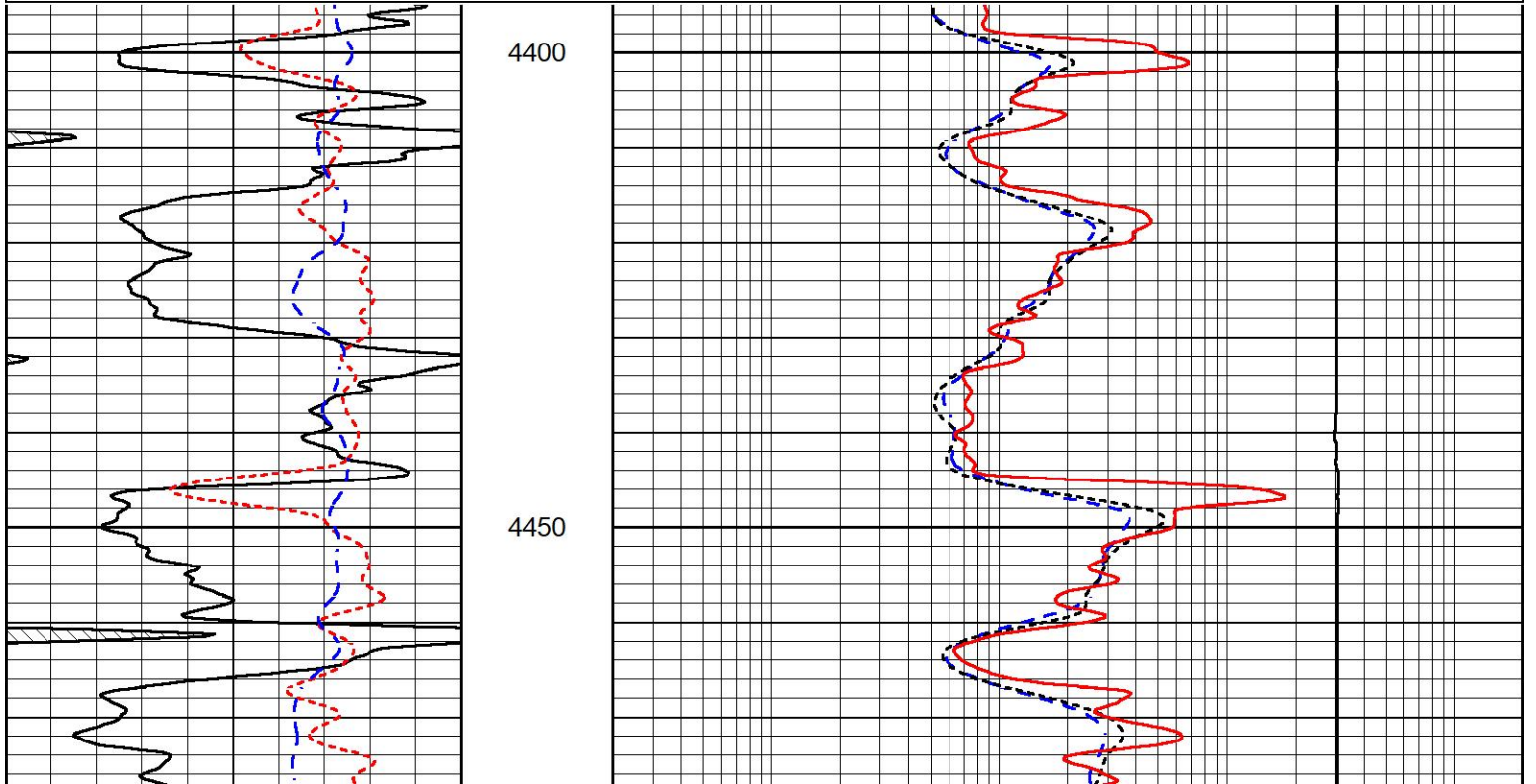
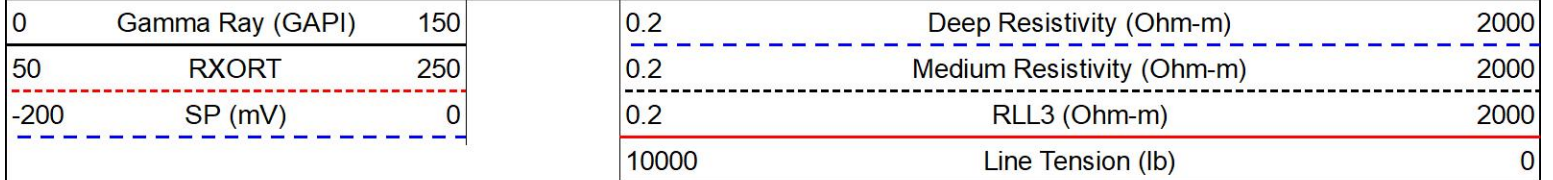


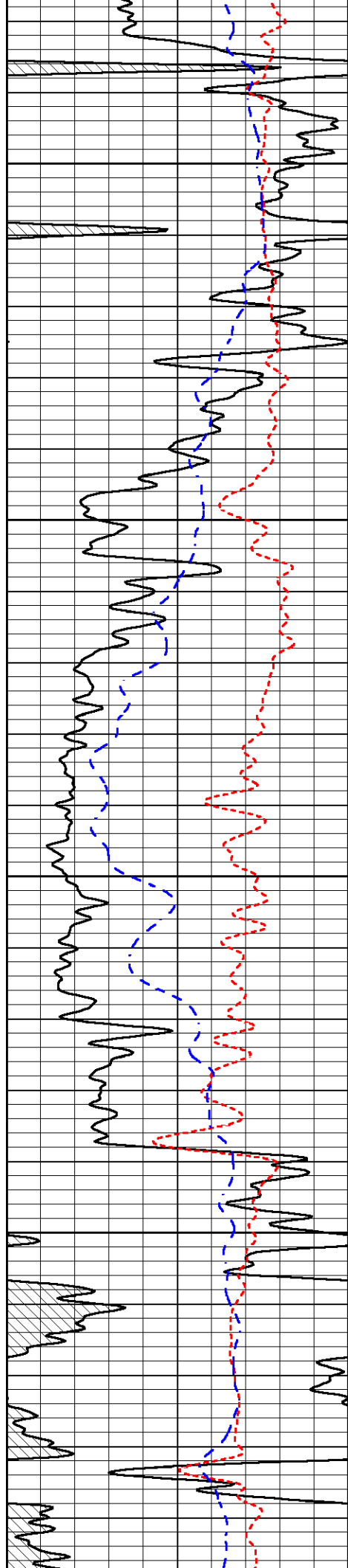
MIDWEST WIRELINE

REPEAT SECTION

REPEAT PASS

Database File cambell energy_jpc #2.db
 Dataset Pathname STKML/run1/pass2.1
 Presentation Format _dil
 Dataset Creation Sat Dec 09 20:18:35 2023
 Charted by Depth in Feet scaled 1:240



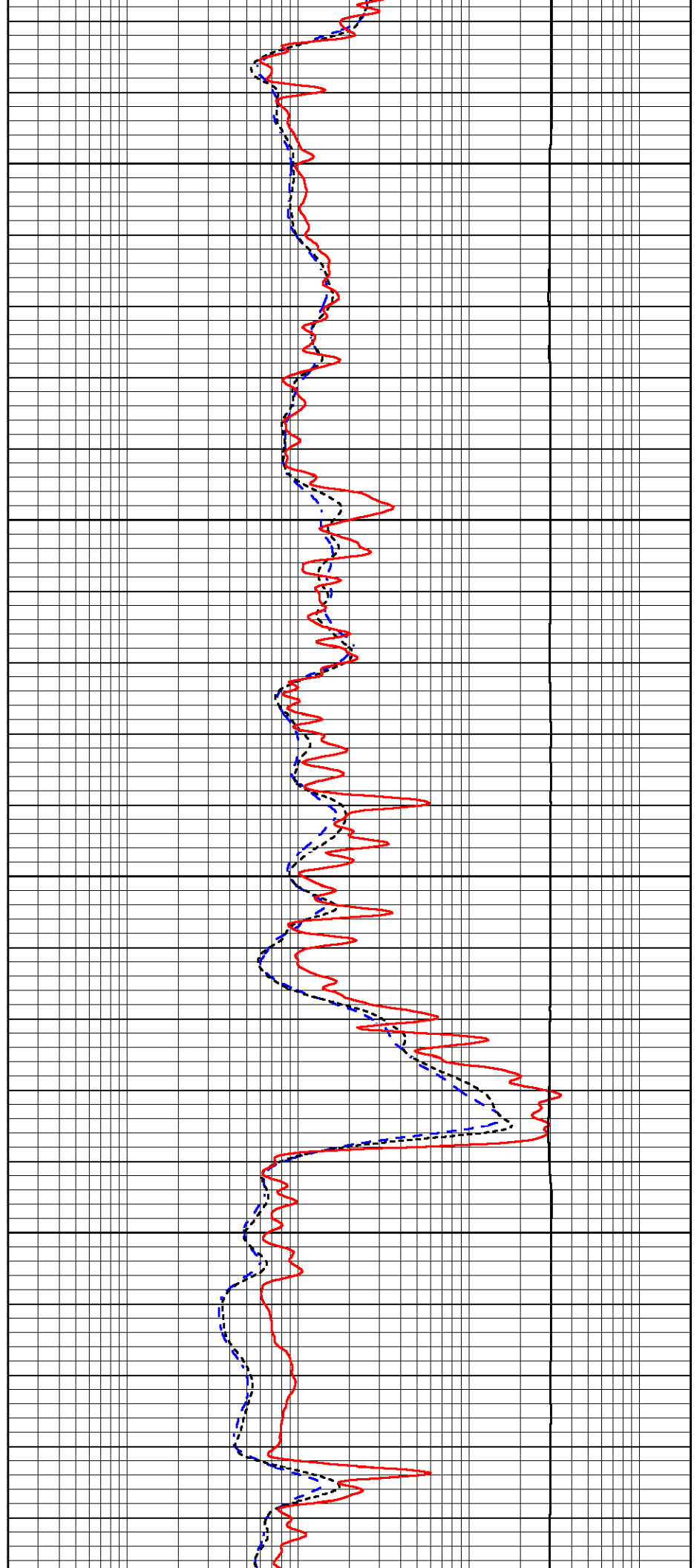


4500

4550

4600

4650



Aluminum:									
SS:	790	958	2239	2075	45	71	45	2	cps
LS:	877	1656	3109	1518	56	132	85	4	cps
Magnesium:									
SS:	1295	1558	3653	2988	50	71	47	3	cps
LS:	3705	6851	12249	4886	93	127	85	12	cps
Aluminum+Iron:									
SS:	500	668	1858	1761	40	72	47	2	cps
LS:	514	1150	2612	1334	53	134	84	4	cps
		Density			PE				
		Actual	Calibrated		Actual	Calibrated	Quality		
Background:									
SS:							0.209		
LS:							0.223		
Aluminum:									
SS:		2.6000	2.6000	g/cc			0.229		
LS:		2.6000	2.6000	g/cc			0.218		
Magnesium:									
SS:		1.6800	1.6800	g/cc	2.5700	2.5700	0.203		
LS:		1.6800	1.6800	g/cc	2.5700	2.5700	0.195		
Aluminum+Iron:									
SS:						6.1800	0.207		
LS:						6.1800	0.229		

Caliper:		Reference:	Reading:
Small Ring:		6.0 in	100.0
Large Ring:		16.0 in	400.0
Gain:		14.000	
Offset:		2.060	

Compensated Neutron Calibration Report

Serial Number: 210
Tool Model: M&W

CALIBRATION

Detector	Readings	Target	Normalization
Short Space	6240.00 cps	1000.00 cps	1.6025
Long Space	460.00 cps	1000.00 cps	1.9500

Gamma Ray Calibration Report

Serial Number: 105
Tool Model: M&W
Performed: Sat Oct 21 23:48:19 2023

Calibrator Value: 500.0 GAPI

Background Reading: 24.0 cps
Calibrator Reading: 637.0 cps

Sensitivity: 0.6000 GAPI/cps



Company Cambell Energy LLC
Well JPC #2
Field Turkey Creek East
County Barber
State Kansas

MIDWEST WIRELINE

STATE TRANS