

Sensor	Offset (ft)	Schematic	Description	Length (ft)	O.D. (in)	Weight (lb)	
GR	40.23		GR-M&W (105)	3.00	3.50	50.00	
CNLSC CNSSC	37.13 36.38		CNT-M&W (210)	5.00	3.50	100.00	
			MWLith-STEP LITHO Short (701-01)	8.40	5.00	250.00	
LCAL	28.21						
LLW8N	28.21						
LLW7N	28.21						
LLW6N	28.21						
LLW5N	28.21						
LLW4N	28.21						
LLW3N	28.21						
LLW2N	28.21			ML-PSI STKBL ML (402)	7.58	4.00	65.00
LLW1N	28.21						
LSLOCK	27.96						
LLLOCK	27.96						
PELTMPR	27.96						
LSHVNG	27.96						
LLHVNG	27.96						
LSW8N	27.71						
LSW7N	27.71						
LSW6N	27.71						
LSW5N	27.71						
LSW4N	27.71						
LSW3N	27.71						
LSW2N	27.71						
LSW1N	27.71						
MCAL	19.58			DIL-M&W (504 HT)	18.25	3.50	220.00
MI	19.58						
MN	19.58						
RLL3F	15.50						
RLL3	15.50						
CILD	8.33						
CILM	4.50						
SP	0.20						

Dataset: cambell energy_jpc #2.db: field/STKML/run1/pass4.1
 Total length: 42.23 ft
 Total weight: 685.00 lb
 O.D.: 5.00 in

Log Variables

DatabaseC:\ProgramData\Warrior\Data\cambell energy_jpc #2.db
 Dataset field/STKML/run1/pass4.1/_vars_

Top - Bottom

A	BOREID in	BOTTEMP degF	CASEOD in	CASETHCK in	FLUIDDEN g/cc	M	MATRXDEN g/cc
1	7.875	123	5.5	0	1	2	2.71
NPORSEL	PERFS	SNDERR mmho/m	SNDERRM mmho/m	SPSHIFT mV	SRFTEMP degF	SZCOR	TDEPTH ft
Limestone	No	0	4	476	0	Off	4738

Variable Description

A : Cement Factor (a)
 BOREID : Borehole I.D.
 BOTTEMP : Bottom Hole Temperature
 CASEOD : Casing O.D.
 CASETHCK : Casing Thickness
 FLUIDDEN : Fluid Density
 M : Cement Exp (m)
 MATRXDEN : Matrix Density

NPORSEL : Neutron Porosity Curve Select
 PERFS : Perforation Flag
 SNDERR : Deep Sonde Error Correction
 SNDERRM : Medium Sonde Error Correction
 SPSHIFT : S.P. Baseline Offset
 SRFTEMP : Surface Temperature
 SZCOR : CN Size Cor. ?
 TDEPTH : Total Depth

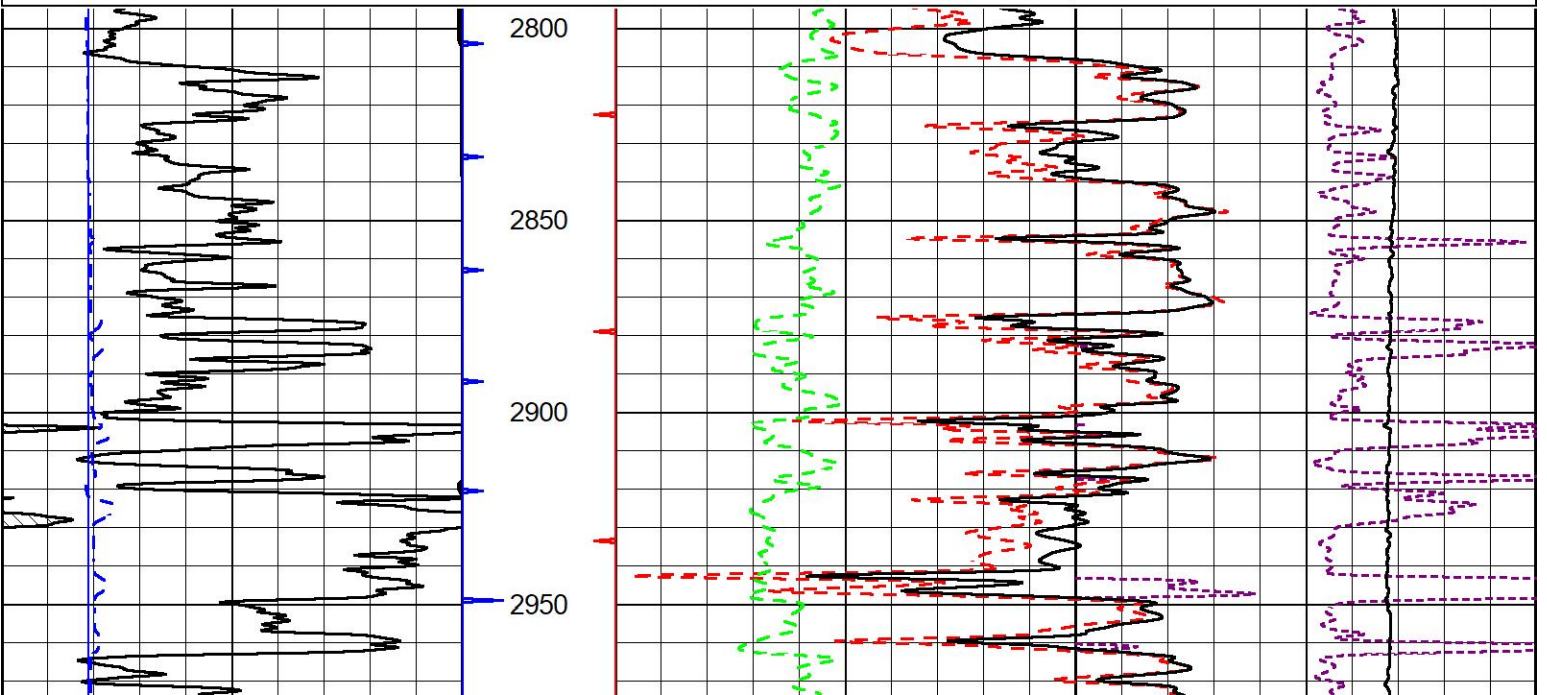


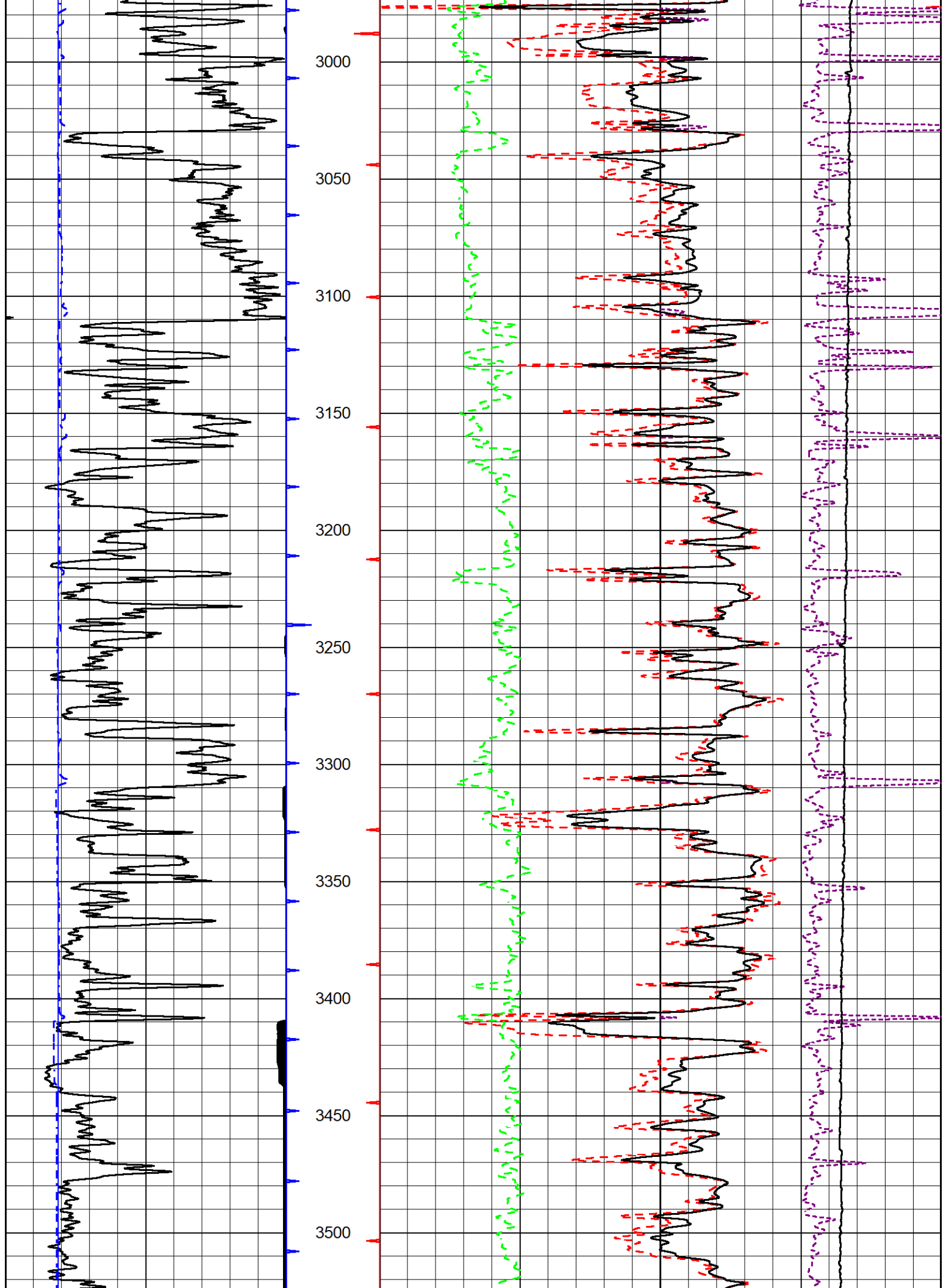
2" SCALE BULK DENSITY

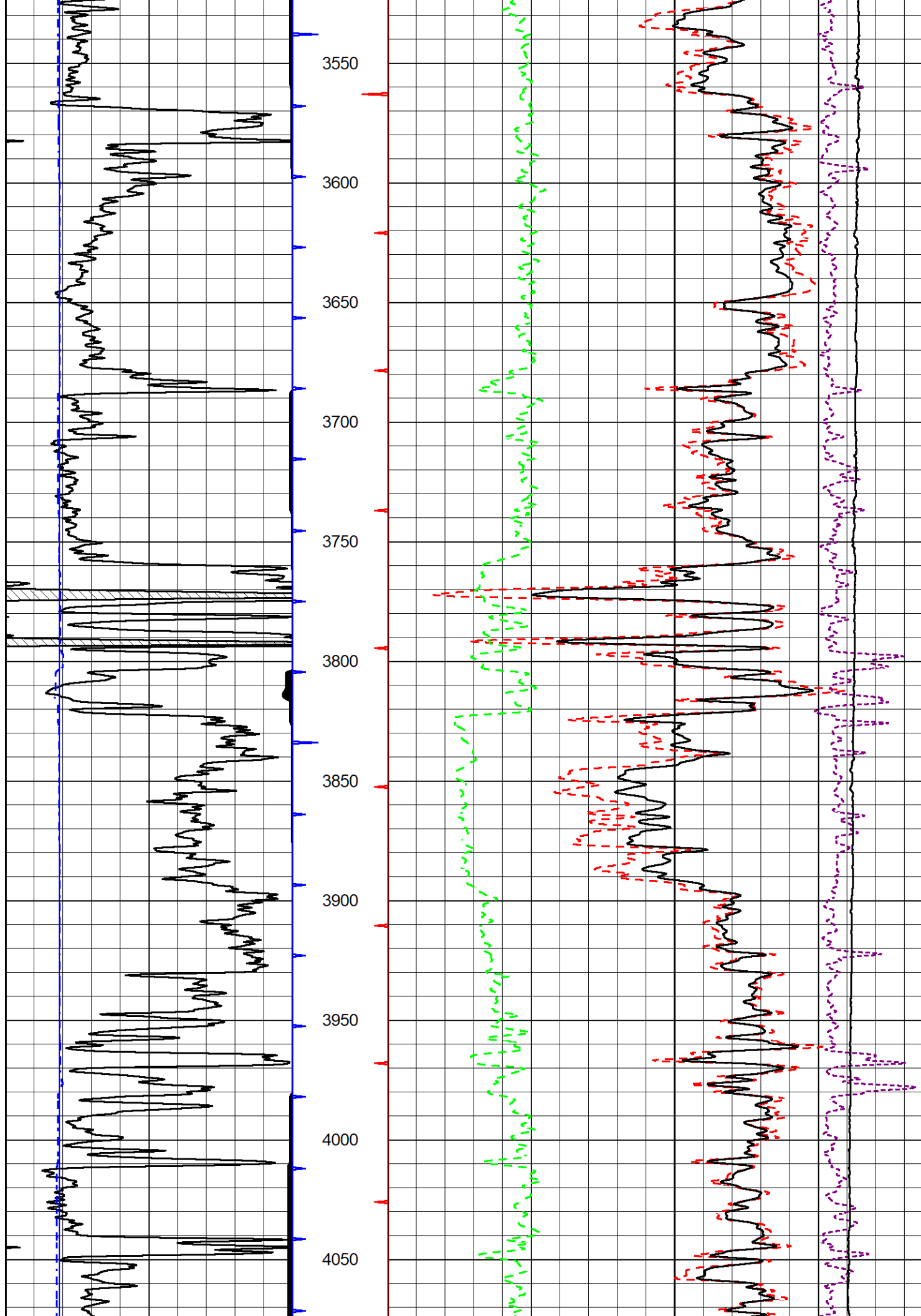
MAIN PASS

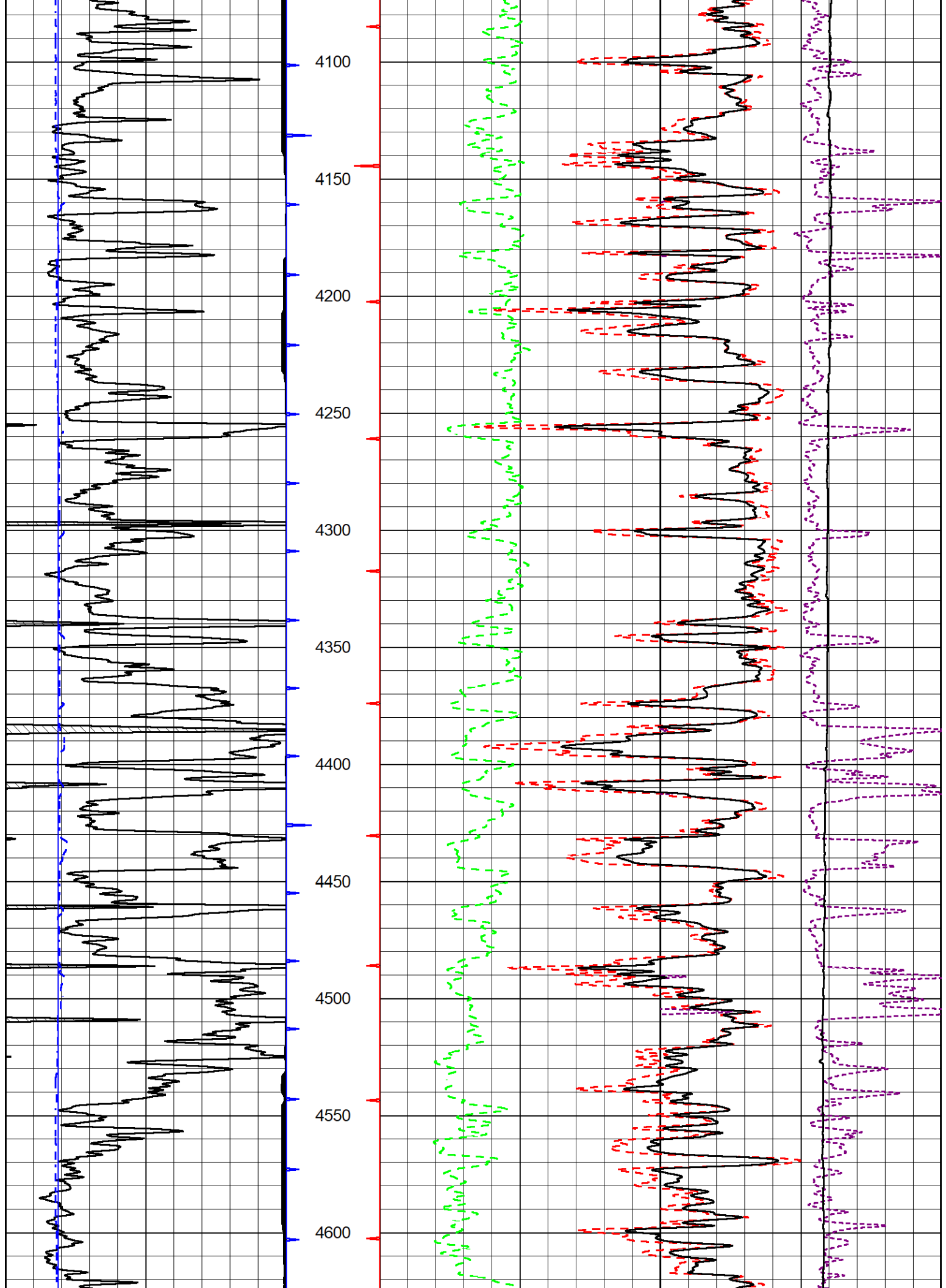
Database File cambell energy_jpc #2.db
 Dataset Pathname STKML/run1/pass4.3
 Presentation Format _cdlpe
 Dataset Creation Sat Dec 09 20:12:27 2023
 Charted by Depth in Feet scaled 1:600

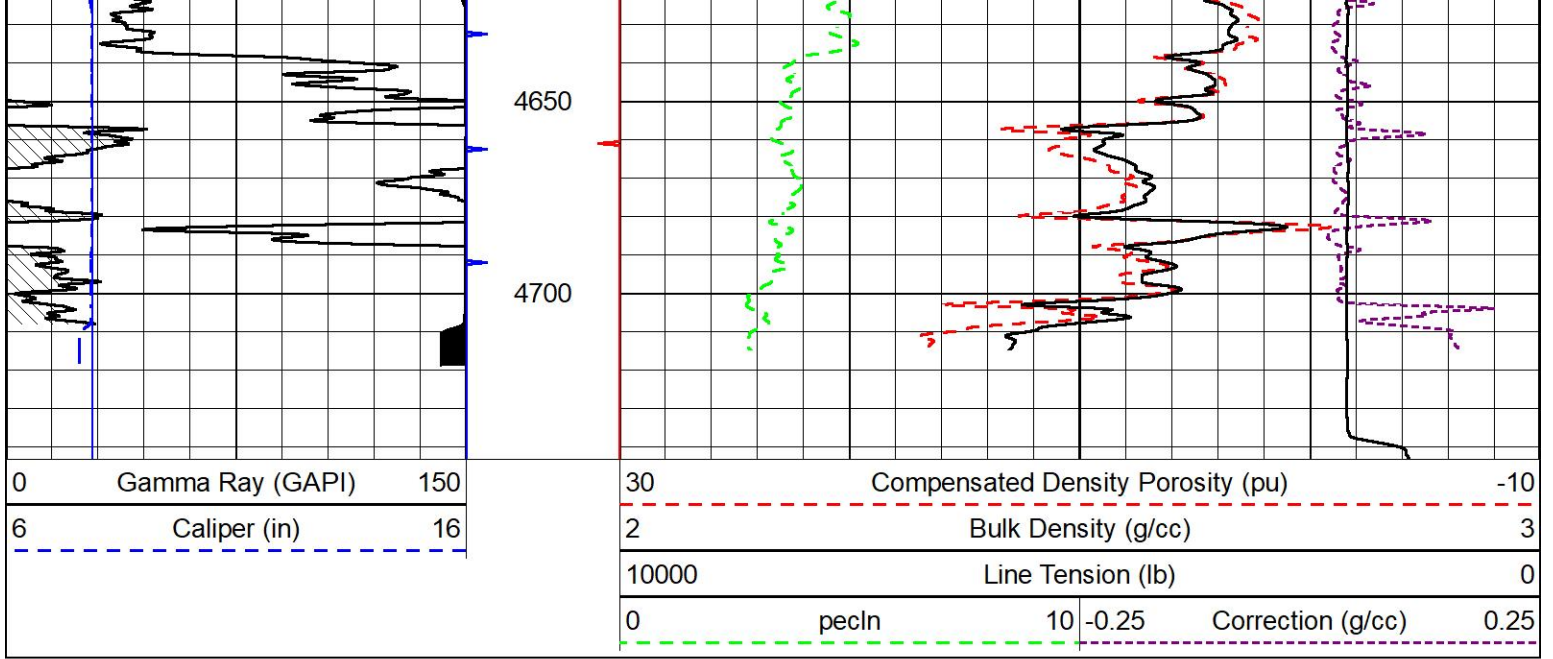
0	Gamma Ray (GAPI)	150	30	Compensated Density Porosity (pu)	-10
6	Caliper (in)	16	2	Bulk Density (g/cc)	3
			10000	Line Tension (lb)	0
			0	pecln	10 -0.25
				Correction (g/cc)	0.25









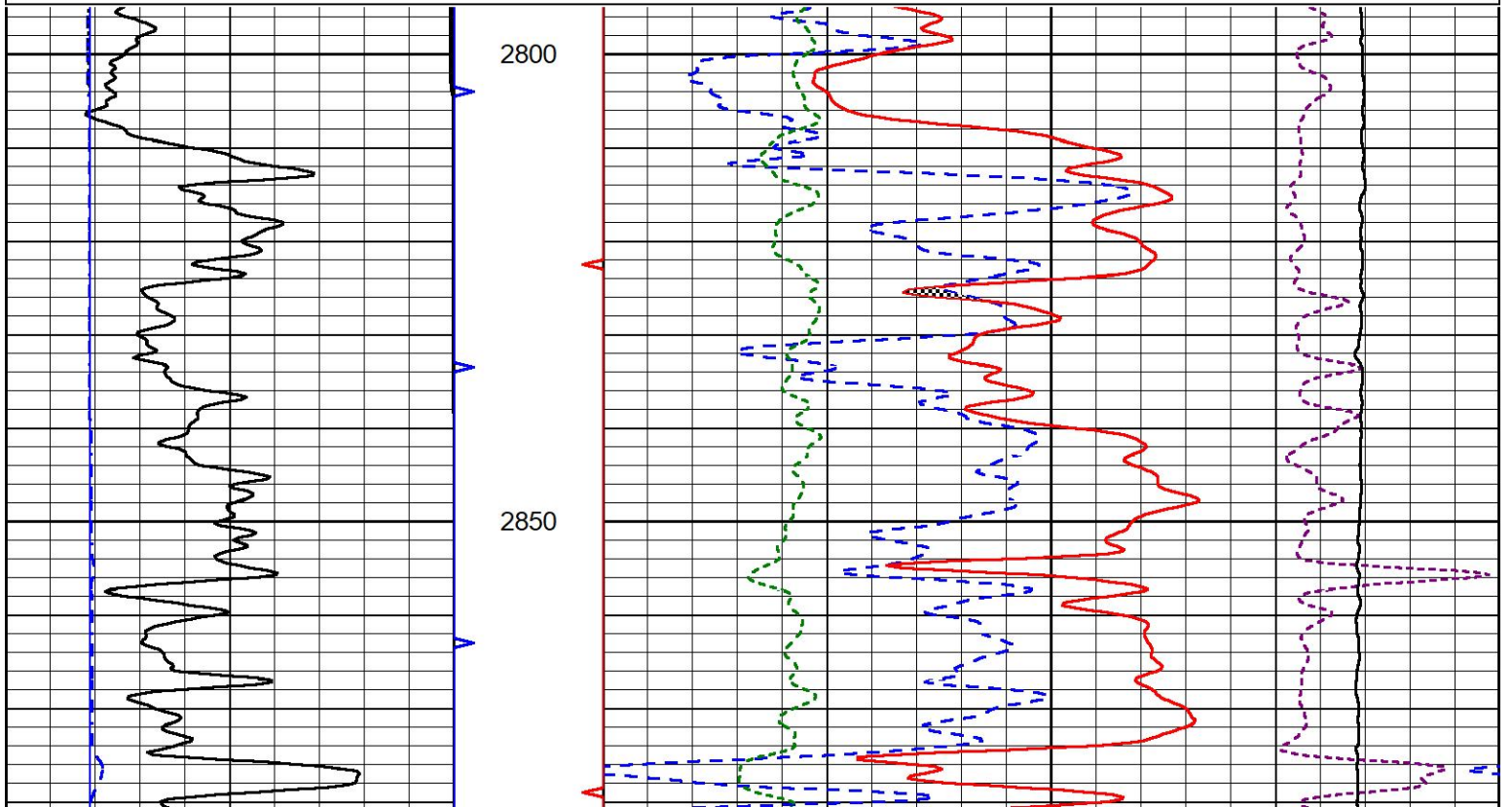
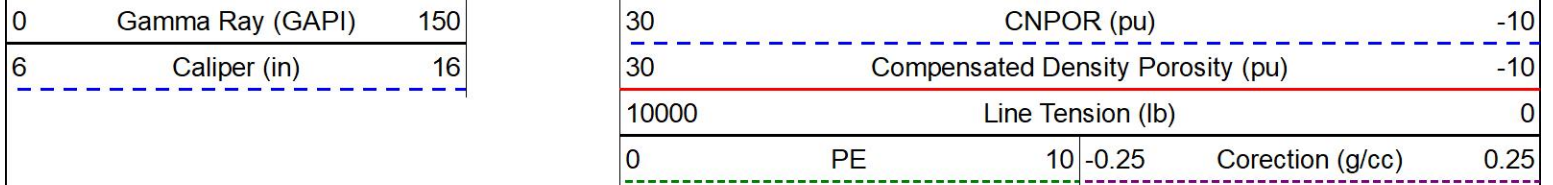


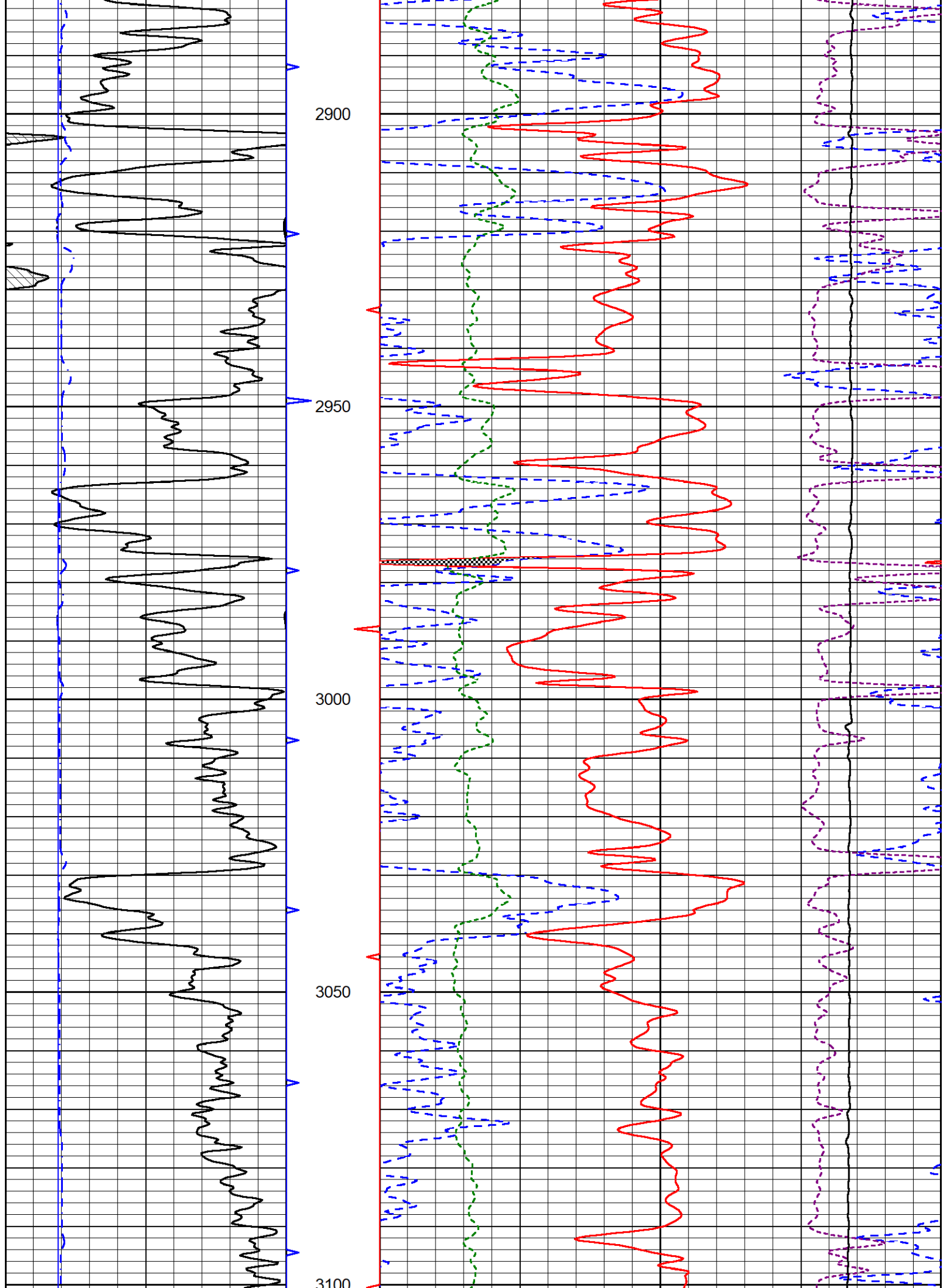
MIDWEST WIRELINE

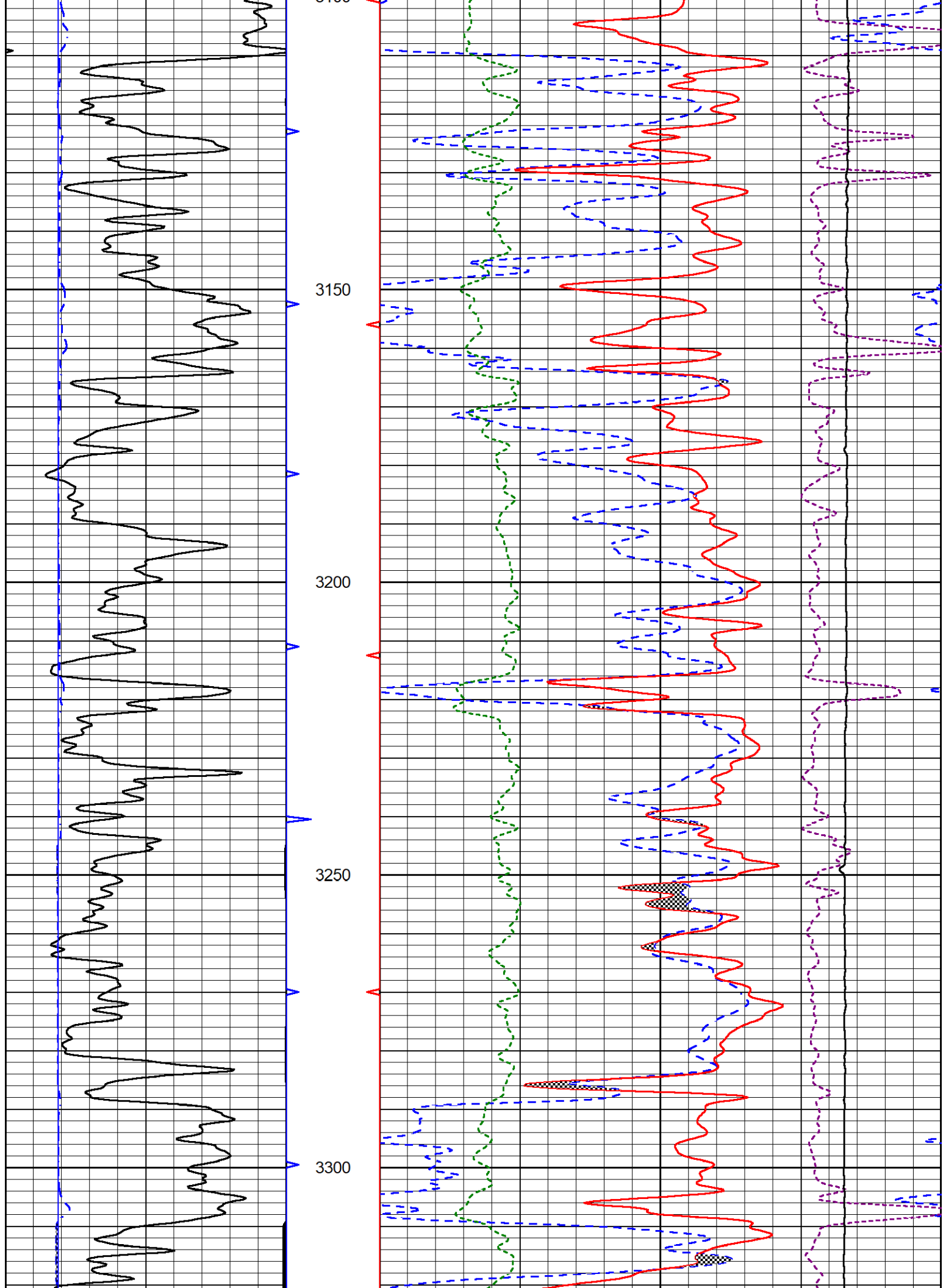
DETAIL SECTION

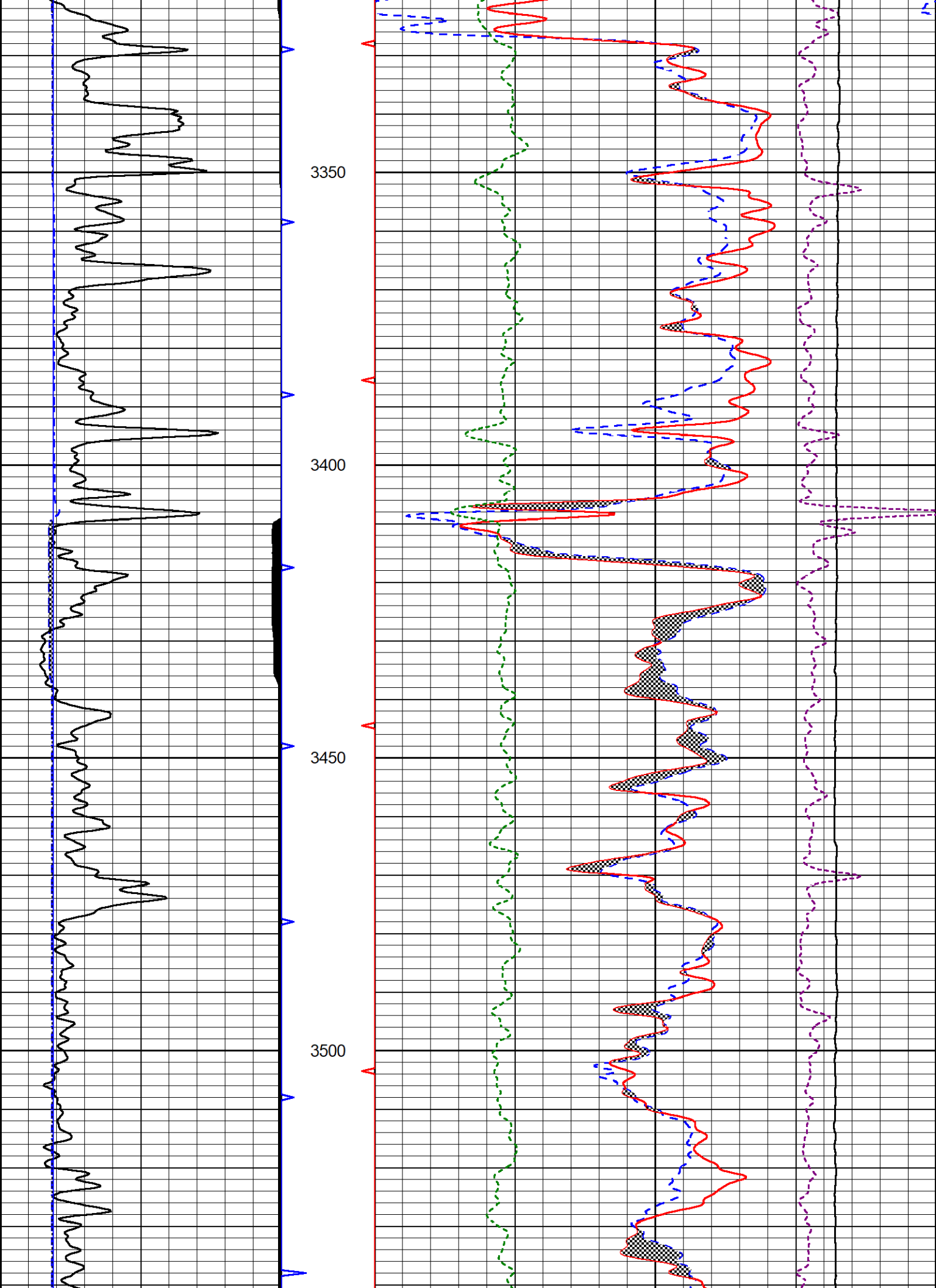
MAIN PASS

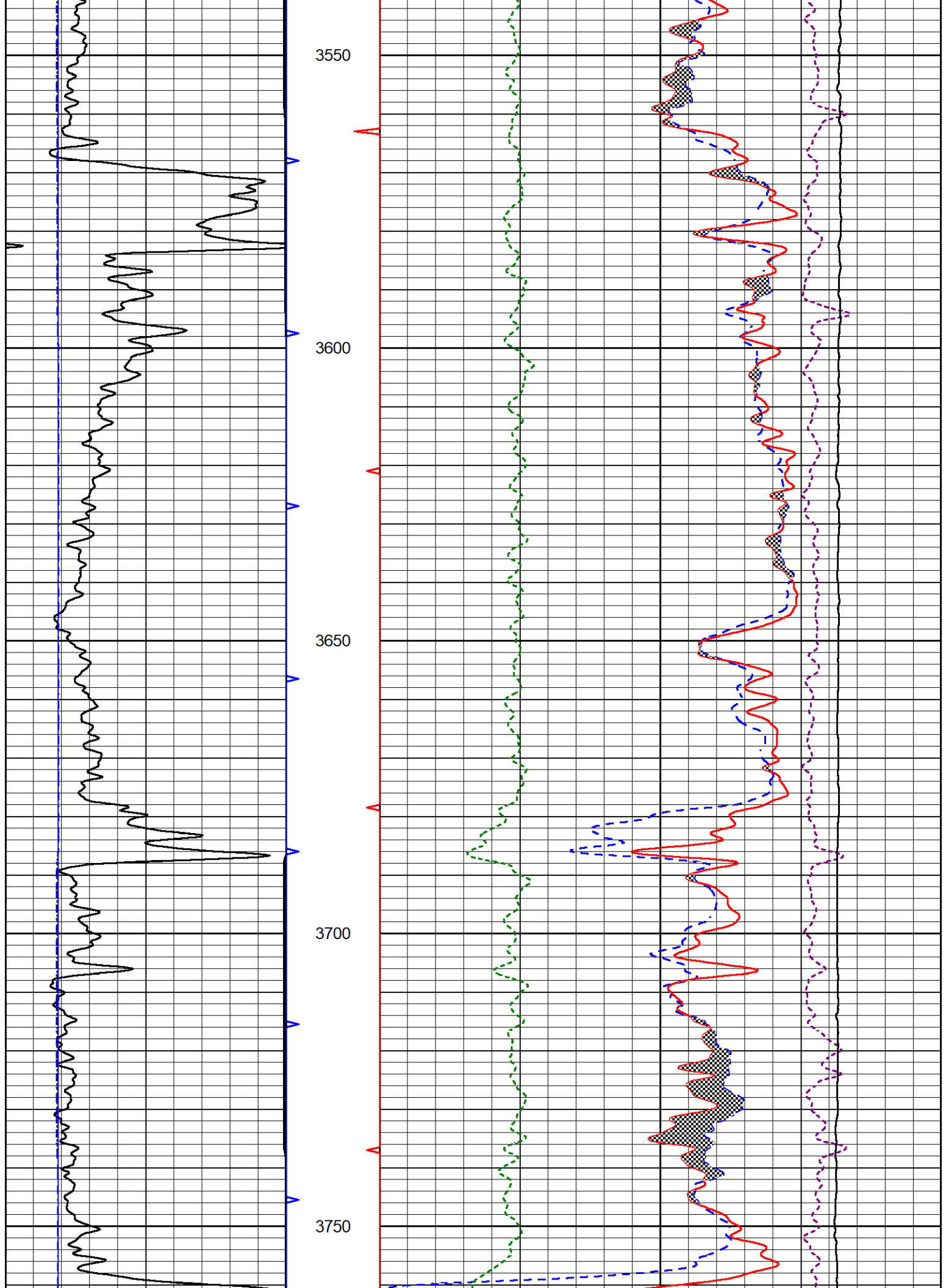
Database File cambell energy_jpc #2.db
 Dataset Pathname STKML/run1/pass4.1
 Presentation Format _CNDLS~4
 Dataset Creation Sat Dec 09 20:48:02 2023
 Charted by Depth in Feet scaled 1:240

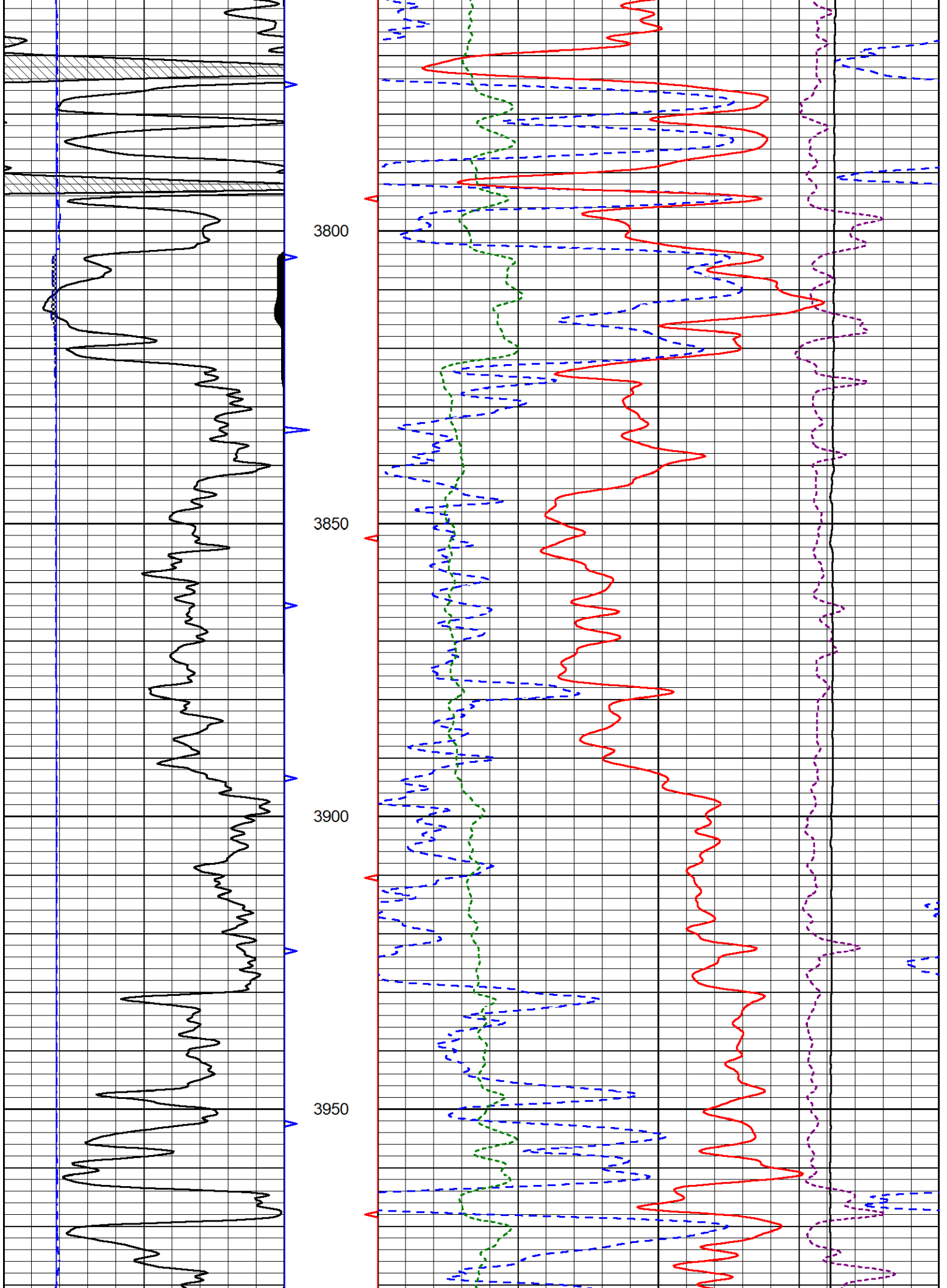


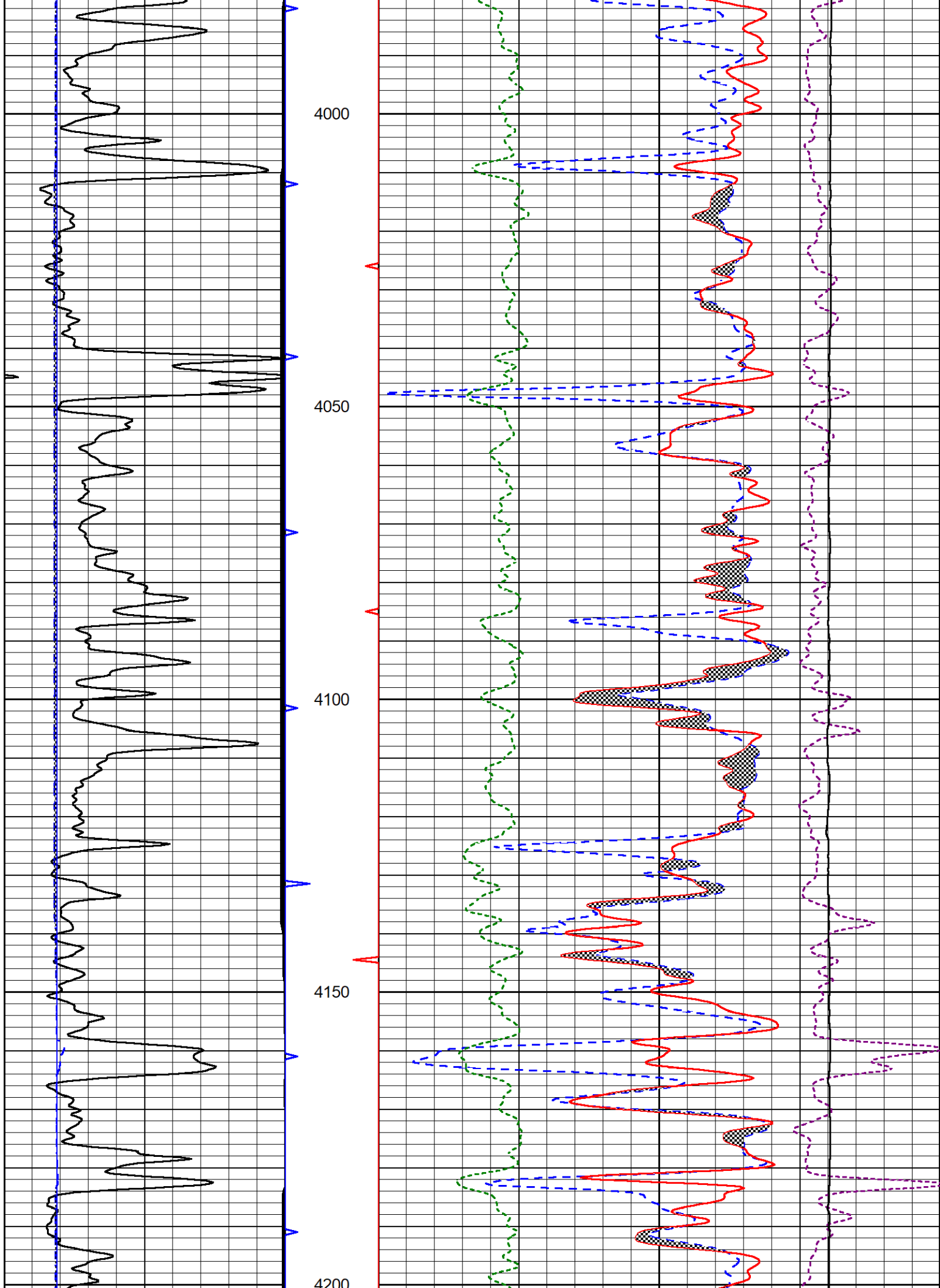


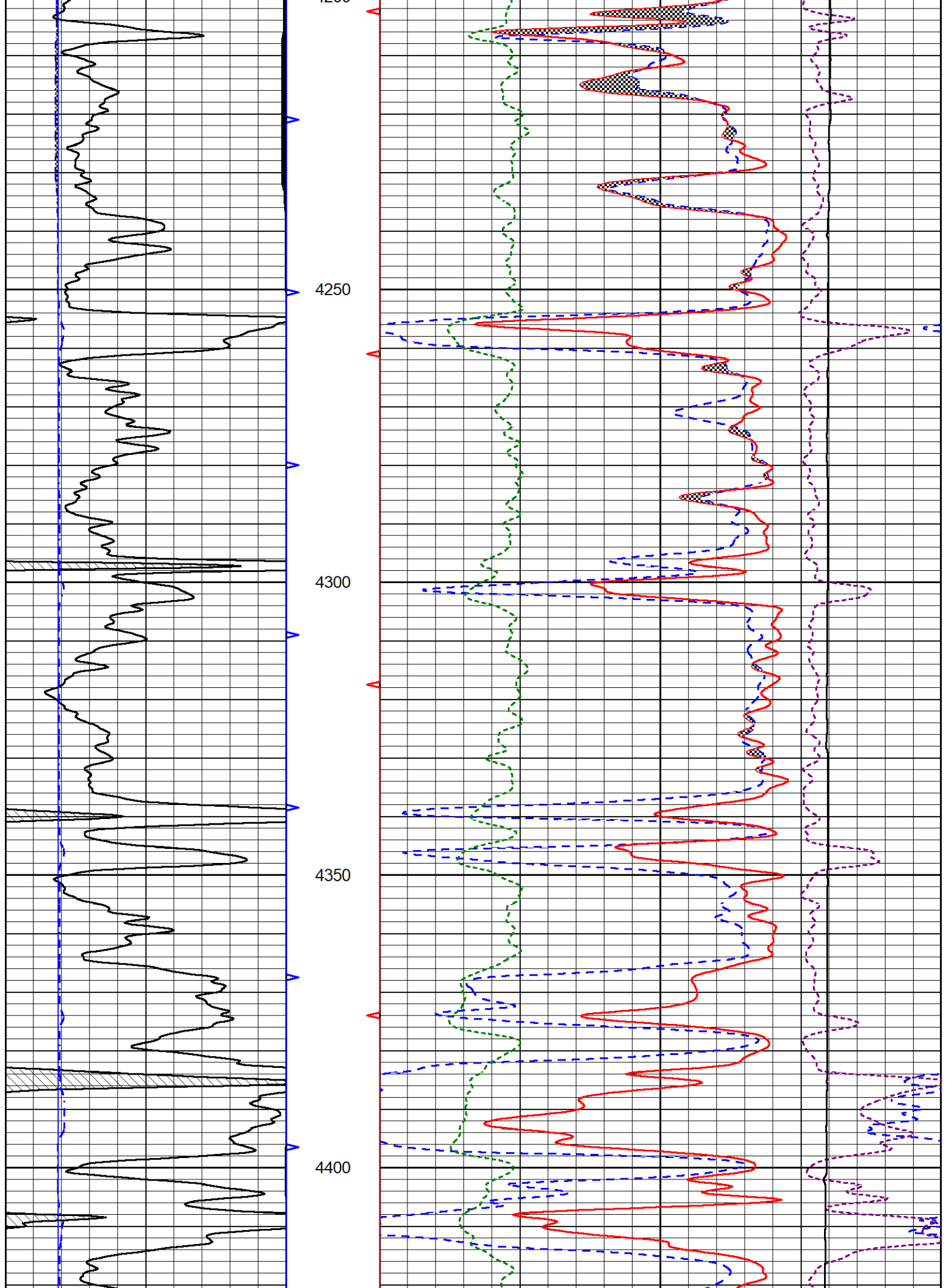


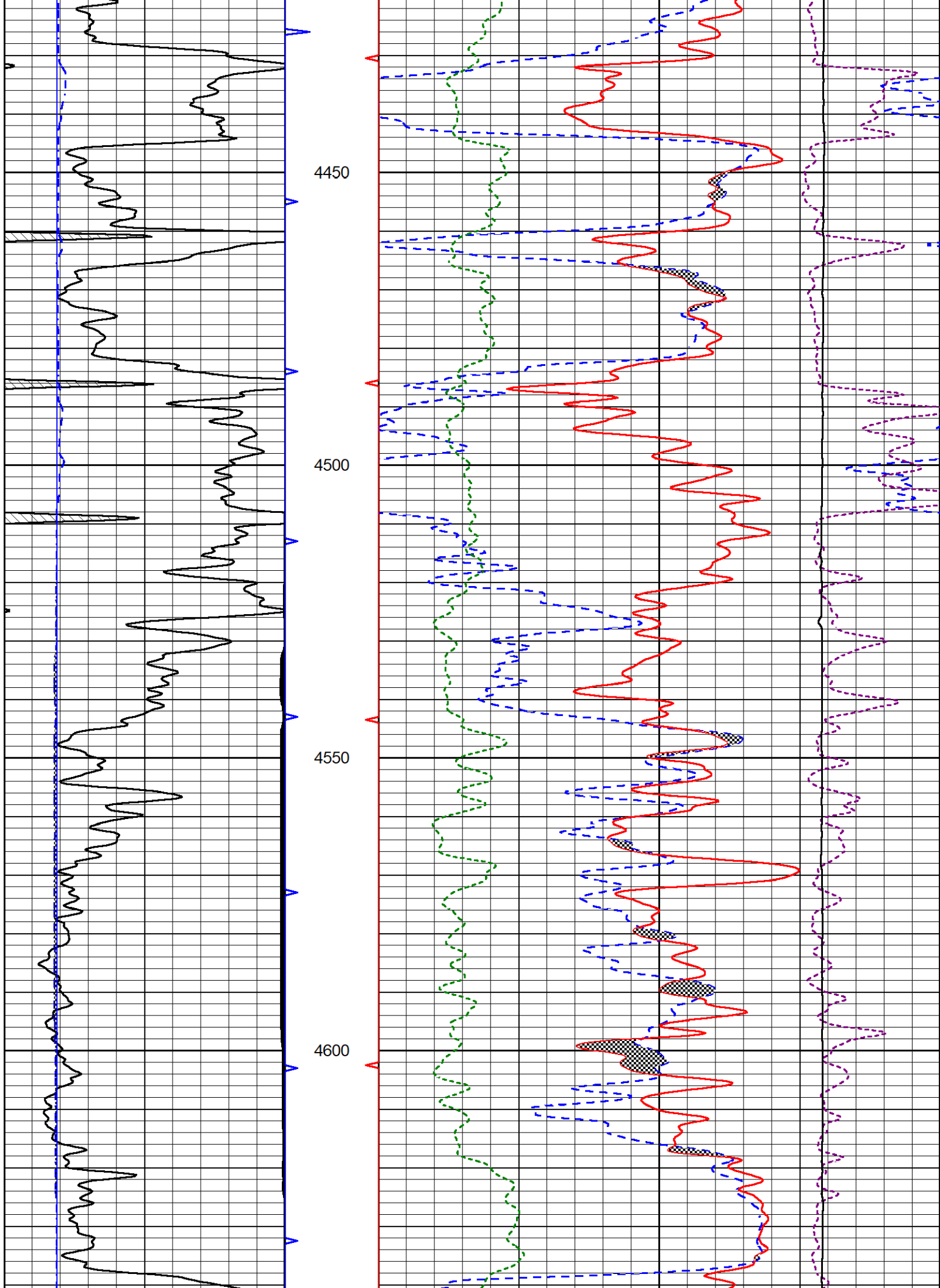


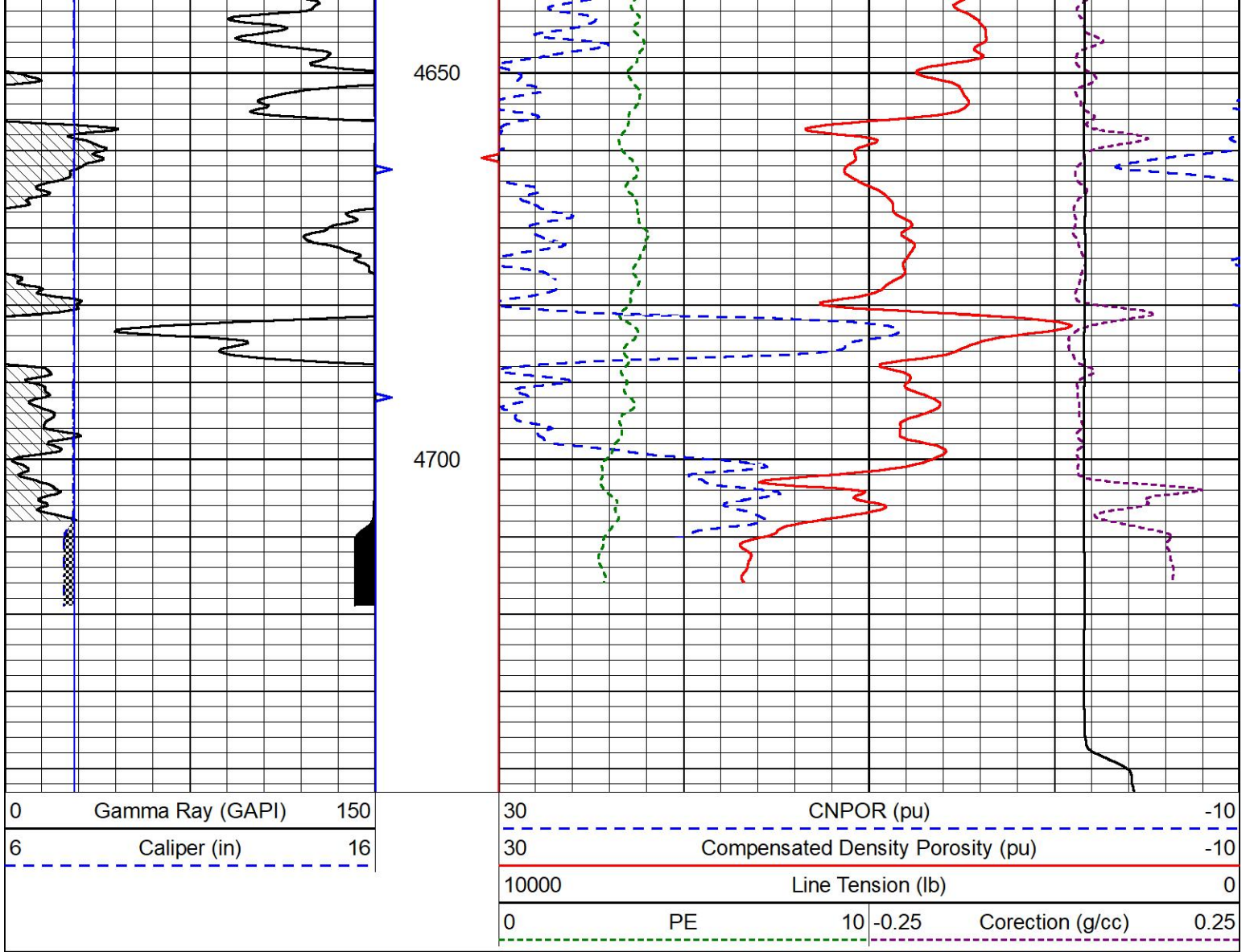








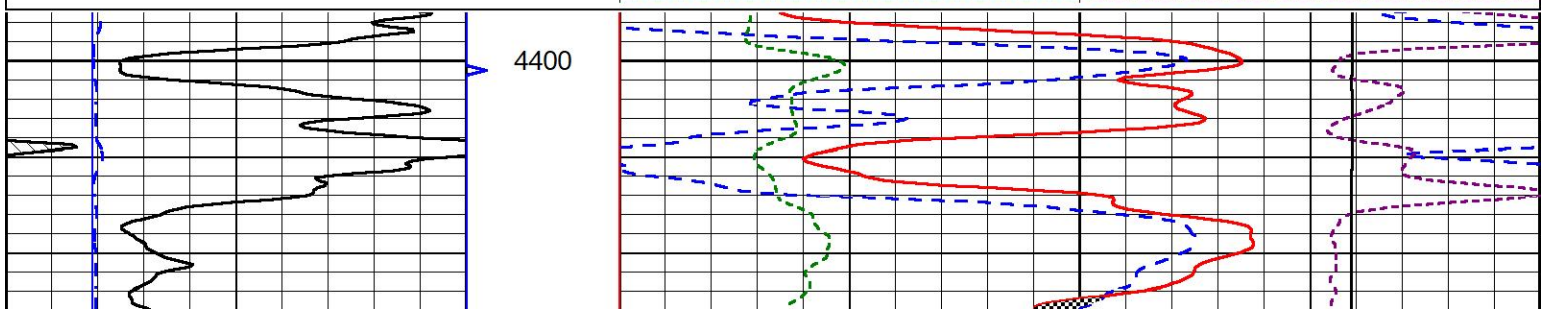
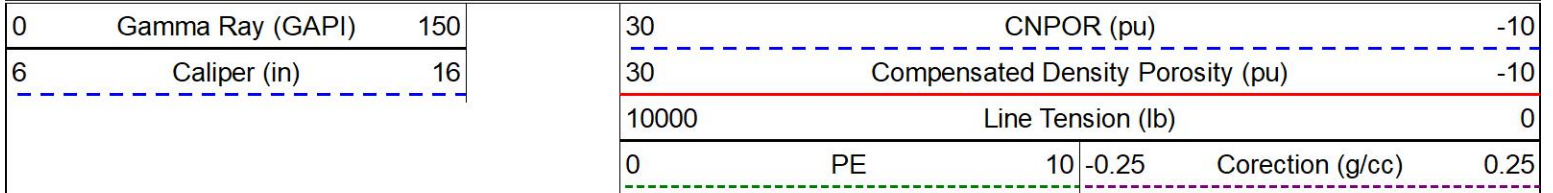


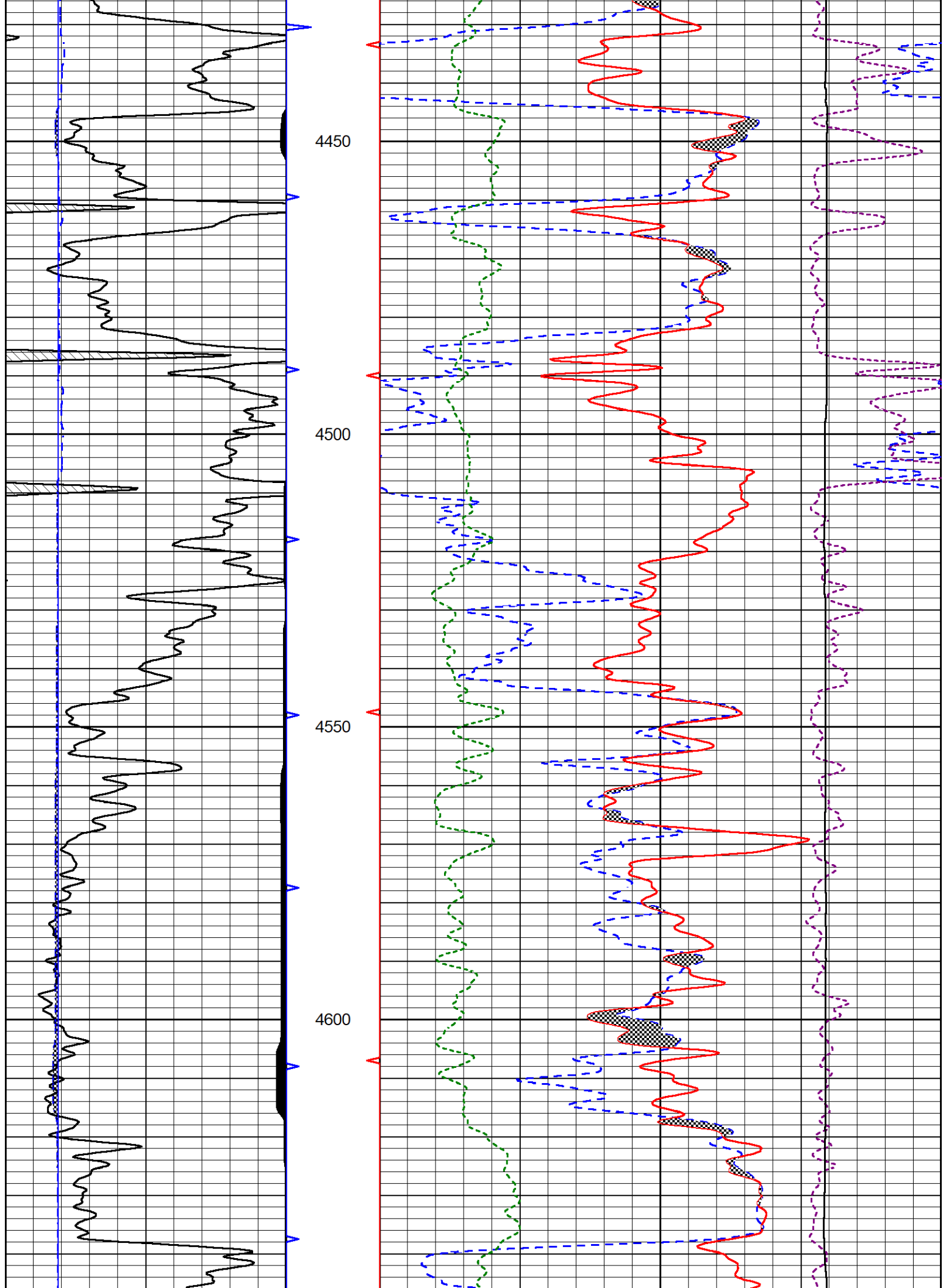


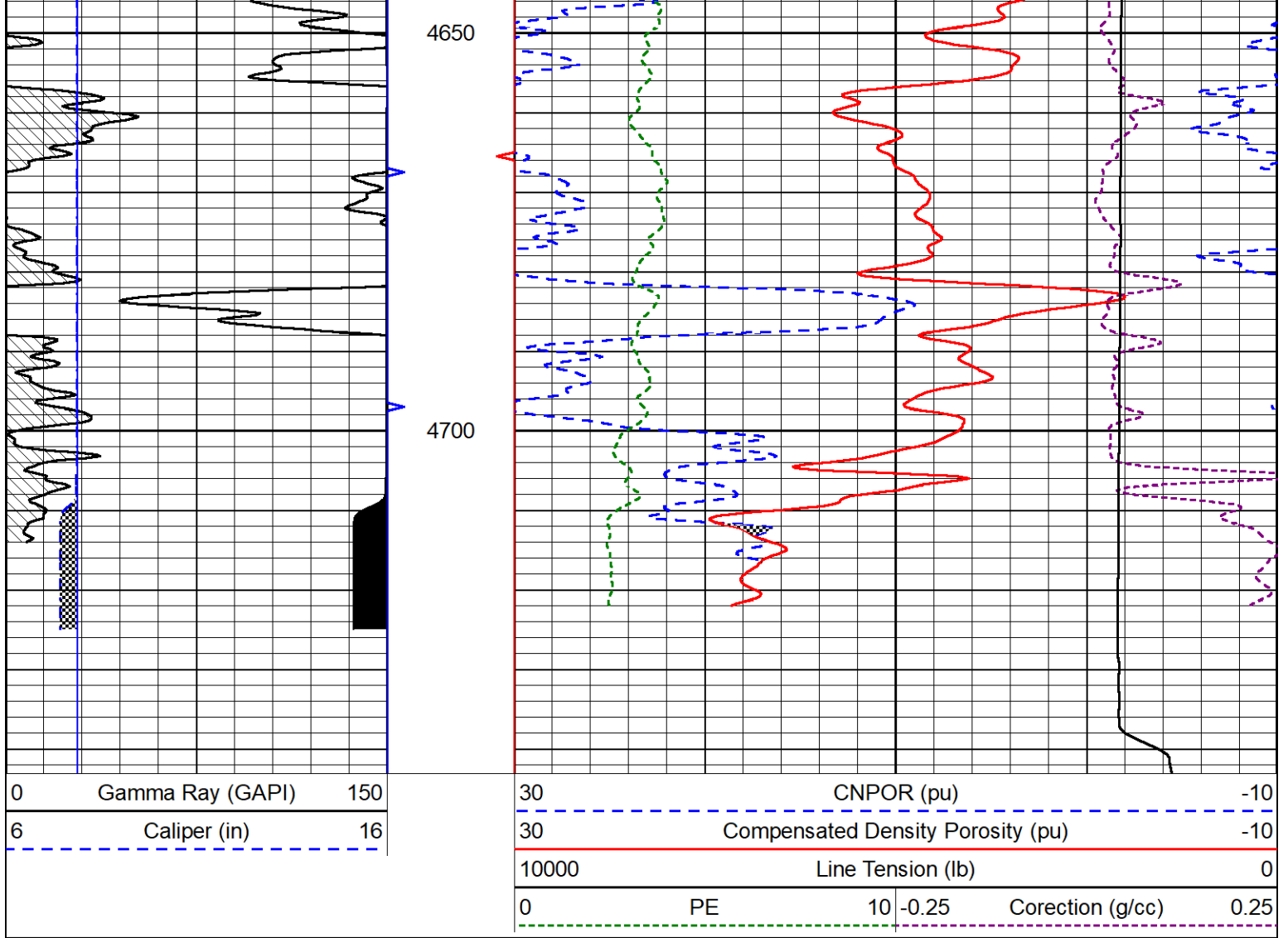
REPEAT SECTION

REPEAT PASS

Database File cambell energy_jpc #2.db
 Dataset Pathname STKML/run1/pass2.1
 Presentation Format _CNDLS~4
 Dataset Creation Sat Dec 09 20:18:35 2023
 Charted by Depth in Feet scaled 1:240







Calibration Report

Database File cambell energy_jpc #2.db
 Dataset Pathname STKML/run1/pass4.1
 Dataset Creation Sat Dec 09 20:48:02 2023

Dual Induction Calibration Report

Serial-Model: 504 HT-M&W
 Surface Cal Performed: Wed Jun 7 06:28:44 2023

Loop:	Readings		References			Results	
	Air	Loop	Air	Loop	mmho/m	m	b
Deep	178.615	710.235	0.000	255.800	mmho/m	1.100	-4.500
Medium	161.982	1441.110	0.000	255.800	mmho/m	0.750	-35.000

Microlog Calibration Report

Serial-Model: 402-PSI STKBL ML
 Performed: Sat Dec 2 02:32:23 2023

	Readings		References			Results	
	Zero	Cal	Zero	Cal	Ohm-m	m	b
Normal	0.0037	0.0043	0.0000	10.0000	Ohm-m	16000.0000	-0.2000
Inverse	0.1208	0.0013	0.0000	10.0000	Ohm-m	17000.0000	0.0000

Inverse 0.1208 0.0013 0.0000 10.0000 0.0000 0.0000
 Caliper 1.0046 1.1419 5.5000 20.0000 in 50.0000 -44.5250

LITHODENSITY Calibration Report

Serial Number: 701-01
 Tool Model: STEP LITHO Short
 Performed: Wed Nov 8 15:09:59 2023

Source:

	Win1	Win2	Win3	Win4	Win5	Win6	Win7	Win8	
Background:									
SS:	52	54	204	252	23	67	44	1	cps
LS:	78	87	326	426	46	135	86	3	cps
Aluminum:									
SS:	790	958	2239	2075	45	71	45	2	cps
LS:	877	1656	3109	1518	56	132	85	4	cps
Magnesium:									
SS:	1295	1558	3653	2988	50	71	47	3	cps
LS:	3705	6851	12249	4886	93	127	85	12	cps
Aluminum+Iron:									
SS:	500	668	1858	1761	40	72	47	2	cps
LS:	514	1150	2612	1334	53	134	84	4	cps

	Density Actual	Calibrated	PE Actual	Calibrated	Quality
Background:					
SS:					0.209
LS:					0.223
Aluminum:					
SS:	2.6000	2.6000	g/cc		0.229
LS:	2.6000	2.6000	g/cc		0.218
Magnesium:					
SS:	1.6800	1.6800	g/cc	2.5700	2.5700
LS:	1.6800	1.6800	g/cc	2.5700	2.5700
Aluminum+Iron:					
SS:				6.1800	0.207
LS:				6.1800	0.229

Caliper: Reference: Reading:
 Small Ring: 6.0 in 100.0
 Large Ring: 16.0 in 400.0
 Gain: 14.000
 Offset: 2.060

Compensated Neutron Calibration Report

Serial Number: 210
 Tool Model: M&W

CALIBRATION

Detector	Readings	Target	Normalization
Short Space	6240.00 cps	1000.00 cps	1.6025
Long Space	460.00 cps	1000.00 cps	1.9500

Gamma Ray Calibration Report

Serial Number: 105
 Tool Model: M&W
 Performed: Sat Oct 21 23:48:19 2023

Calibrator Value:	500.0	GAPI
Background Reading:	24.0	cps
Calibrator Reading:	637.0	cps
Sensitivity:	0.6000	GAPI/cps



Company	Cambell Energy LLC
Well	JPC #2
Field	Turkey Creek East
County	Barber
State	Kansas