



MIDWEST SURVEYS
 LOGGING - PERFORATING - CONSUL TING SERVICES
 P.O. Box 68, Osawatomie, KS 66064
 913.755.2128

GAMMA RAY / NEUTRON / CCL

File No. Company **Colt Energy, Inc.**
 Well **Knoble No.-15**
 Field **Iola**
 County **Allen** State **Kansas**

Location **201' FSL & 1164' FWL**
SE-SE-SW-SW
 Other Services **Perforate**

Sec. 4 Twp. 24S Rge. 18E Elevation 1011'
 Permian/Datum GL GL KB NA
 Log Measured From GL GL DF NA
 Drilling Measured From GL GL GL 1011'

Date 01-29-2024
 Run Number One
 Depth Miller 1034.0
 Depth Logger 1015.0
 Bottom Logged Interval 1014.0
 Top Log Interval 20.0
 Fluid Level Fall

Type Fluid **Water**
 Density / Viscosity **NA**
 Salinity - PPM Cl **NA**
 Max Recorded Temp **NA**
 Estimated Cement Top **0.0**
 Equipment No. **104** Orientation
 Recorded by **Steve Winkisch**
 Witnessed by **Was Moiss**

BORE-HOLE RECORD				CASING RECORD			
Run	BIT	FROM	TO	SIZE	WT	FROM	TO
One	12.25"	0.0	20.0	8.625"	28.0	0.0	20.0
Two	6.75"	20.0	1034.0	4.50"	10.5	0.0	1024.7
				Barite	Set	At	1020.7

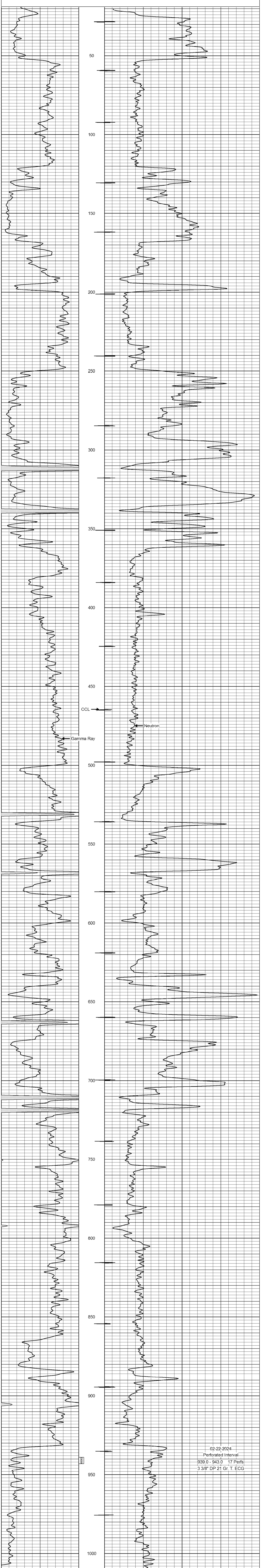
<<< Fold Here >>>

All interpretations are opinions based on inferences from electrical or other measurements and we cannot and do not guarantee the accuracy or correctness of any interpretation, and we shall not, except in the case of gross or willful negligence on our part, be liable or responsible for any loss, costs, damages, or expenses incurred or sustained by anyone resulting from any interpretation made by any of our officers, agents or employees. These interpretations are also subject to our general terms and conditions set out in our current Price Schedule.

Comments

Drilling Contractor :
Colt Energy, Inc.

Database File: knoble 15.db
 Dataset Pathname: pass2
 Presentation Format: gr-n-ccl
 Dataset Creation: Mon Jan 29 11:31:07 2024 by Log SCH 111116
 Charted by: Depth in Feet scaled 1:240



02-22-2024
 Perforated Interval
 939.0 - 943.0 17 Perfs
 3 3/8" DP 21 Gr. T. ECG