



**COMPENSATED  
DENSITY/NEUTRON  
PE LOG**

Company JOE GERSTNER OIL, LLC  
 Well MYERS #1  
 Field BEECHING EAST  
 County RUSH  
 State KANSAS

Company JOE GERSTNER OIL, LLC  
 Well MYERS #1  
 Field BEECHING EAST  
 County RUSH State KANSAS

Location: 943 FSL & 2022 FEL  
 SE - NW - SW - SE  
 SEC 1 TWP 16S RGE 16W  
 Permanent Datum GROUND LEVEL Elevation 1926  
 Log Measured From KELLY BUSHING 7' A.G.L  
 Drilling Measured From KELLY BUSHING  
 Other Services DILMEL  
 Elevation K.B. 1933  
 D.F. 1931  
 G.L. 1926

Date	1/11/24		
Run Number	ONE		
Depth Driller	3650		
Depth Logger	3650		
Bottom Logged Interval	3626		
Top Log Interval	2800		
Casing Driller	8.625 @ 1021		
Casing Logger	1021		
Bit Size	7.875		
Type Fluid in Hole	CHEMICAL MUD	CHLORIDES 5,700 PPM	
Density / Viscosity	8.85/50		
pH / Fluid Loss	11.0/8.0		
Source of Sample	FLOWLINE		
Rm @ Meas. Temp	.900 @ 65F		
Rmt @ Meas. Temp	.675 @ 65F		
Rmc @ Meas. Temp	1.08 @ 65F		
Source of Rmf / Rmc	MEASUREMENT		
Rm @ BHT	.518 @ 113F		
Time Circulation Stopped	2 HOURS		
Time Logger on Bottom	9:30 P.M.		
Maximum Recorded Temperature	113F		
Equipment Number	3802		
Location	HAYS, KANSAS		
Recorded By	COLE ROBBEN		
Witnessed By	ANDREW STENZEL		

<<< Fold Here >>>

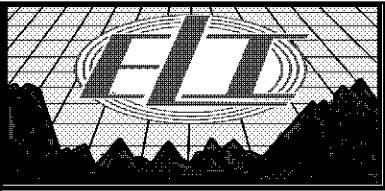
All interpretations are opinions based on inferences from electrical or other measurements and we cannot and do not guarantee the accuracy or correctness of any interpretation, and we shall not, except in the case of gross or willful negligence on our part, be liable or responsible for any loss, costs, damages, or expenses incurred or sustained by anyone resulting from any interpretation made by any of our officers, agents or employees. These interpretations are also subject to our general terms and conditions set out in our current Price Schedule.

**Comments**

THANK YOU FOR USING ELI WIRELINE SERVICES, HAYS, KS. ( 785 ) 628-6395

**DIRECTIONS:**

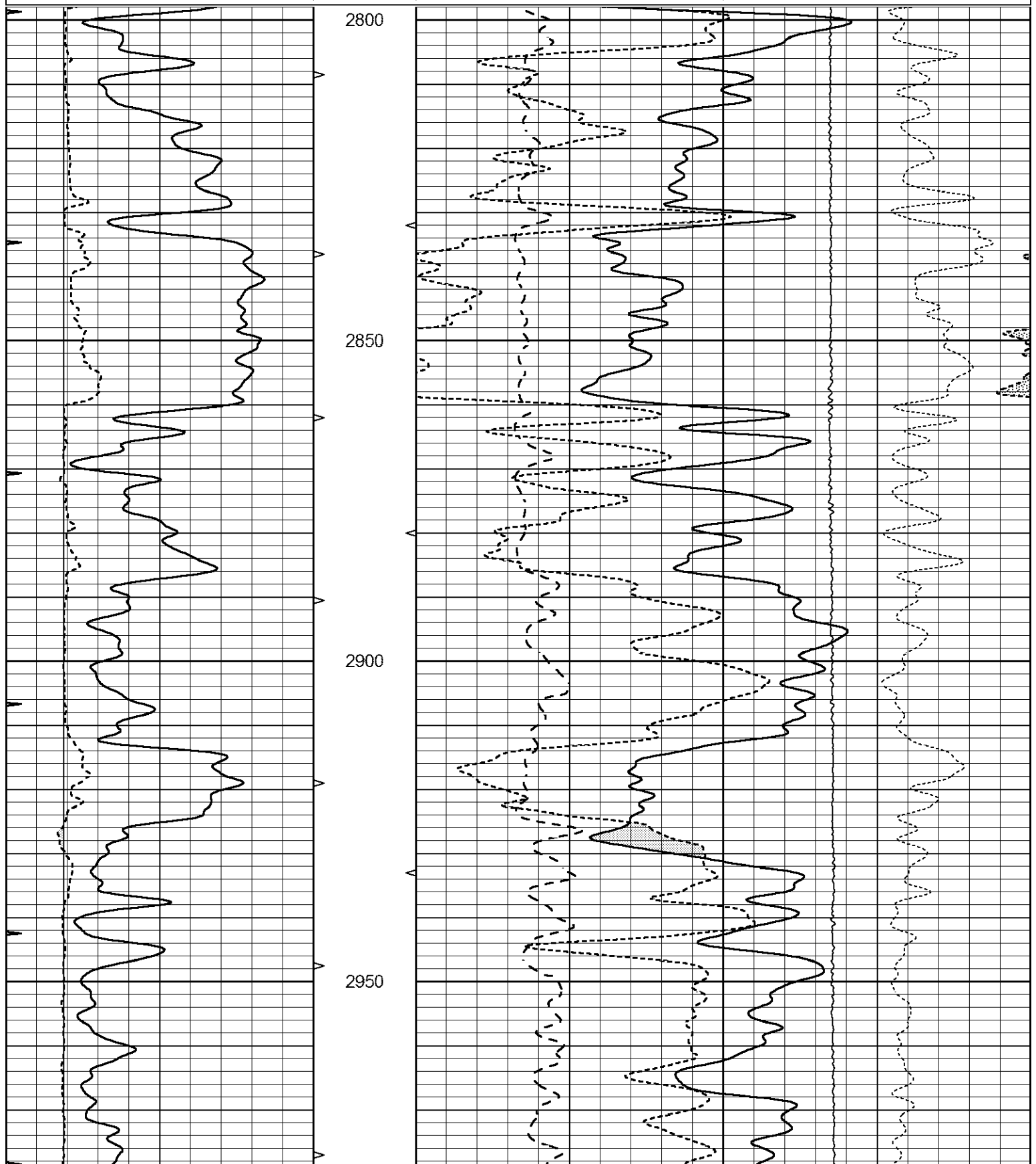
FROM GORHAM EXIT OFF I70 GO SOUTH TO RUSH COUNTY LINE AT T IN ROAD, 2 MILES WEST TO 'CR390', 1 MILE SOUTH TO 'B' ROAD, 3/4 MILE EAST, NORTH INTO

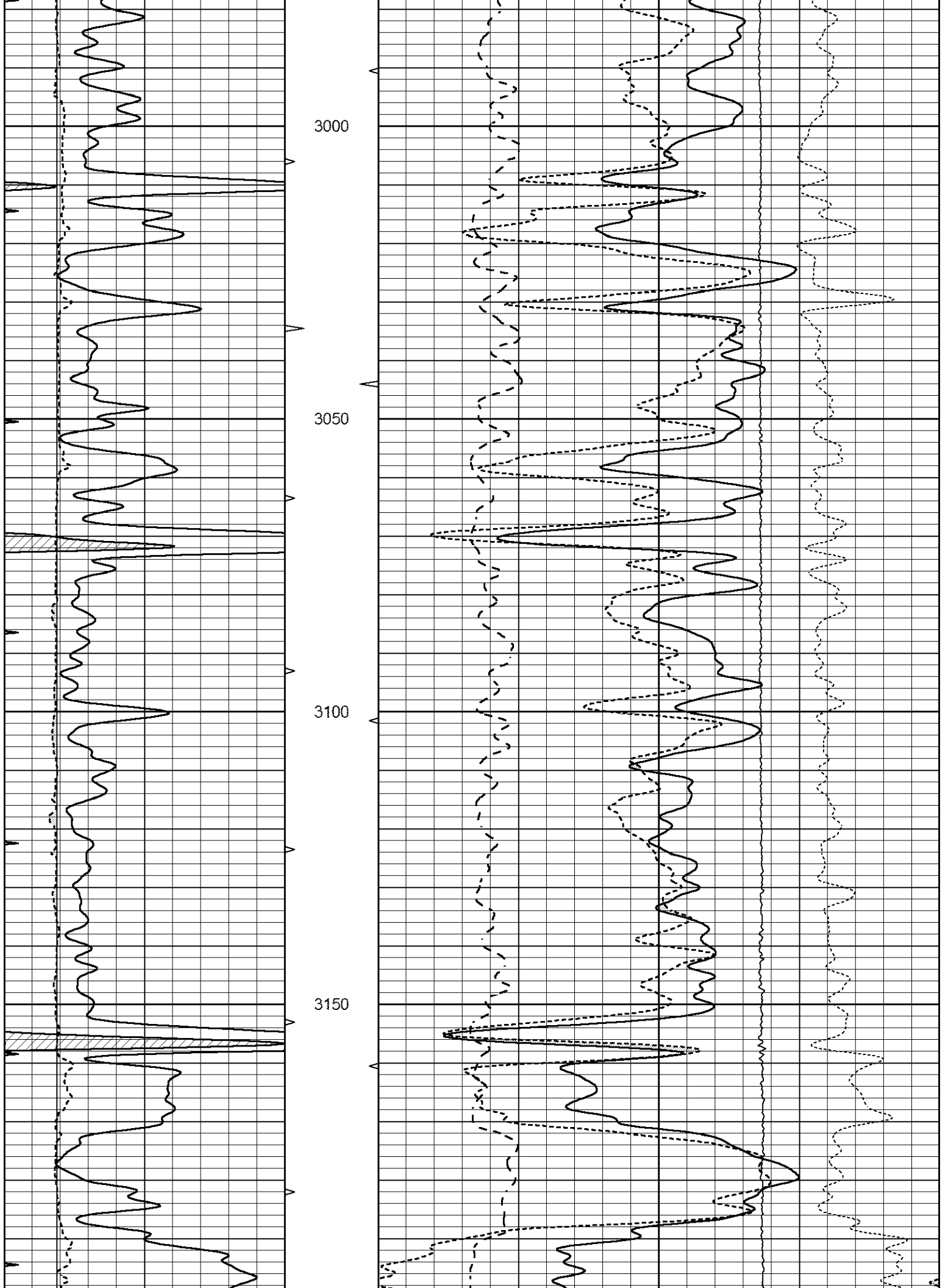


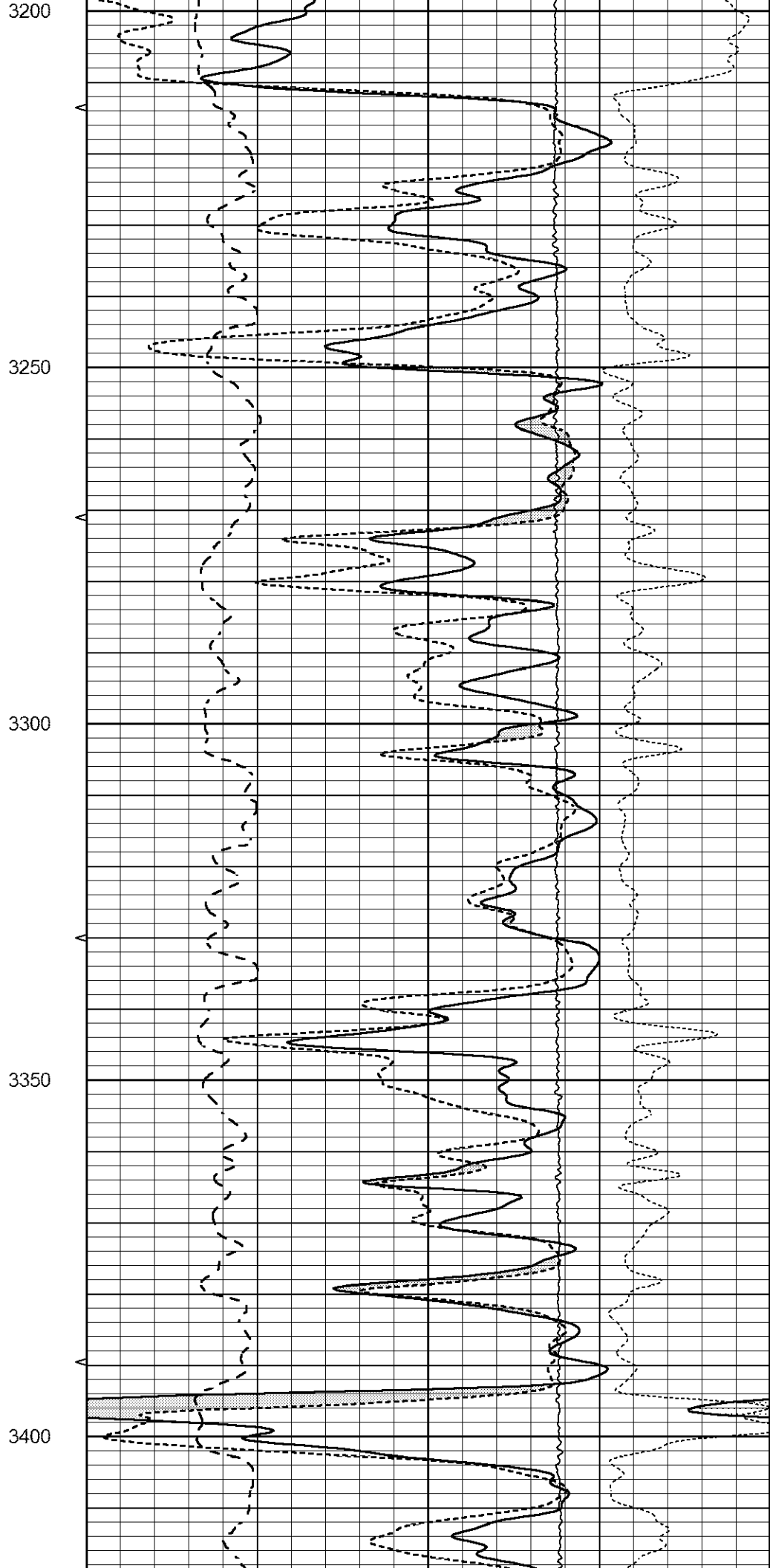
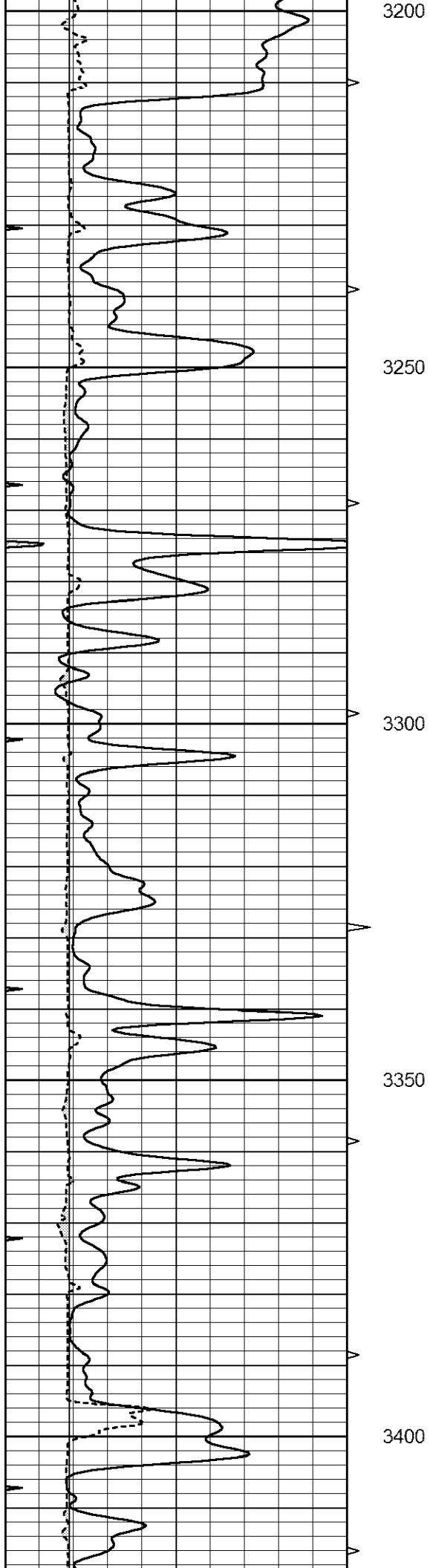
**MAIN SECTION**

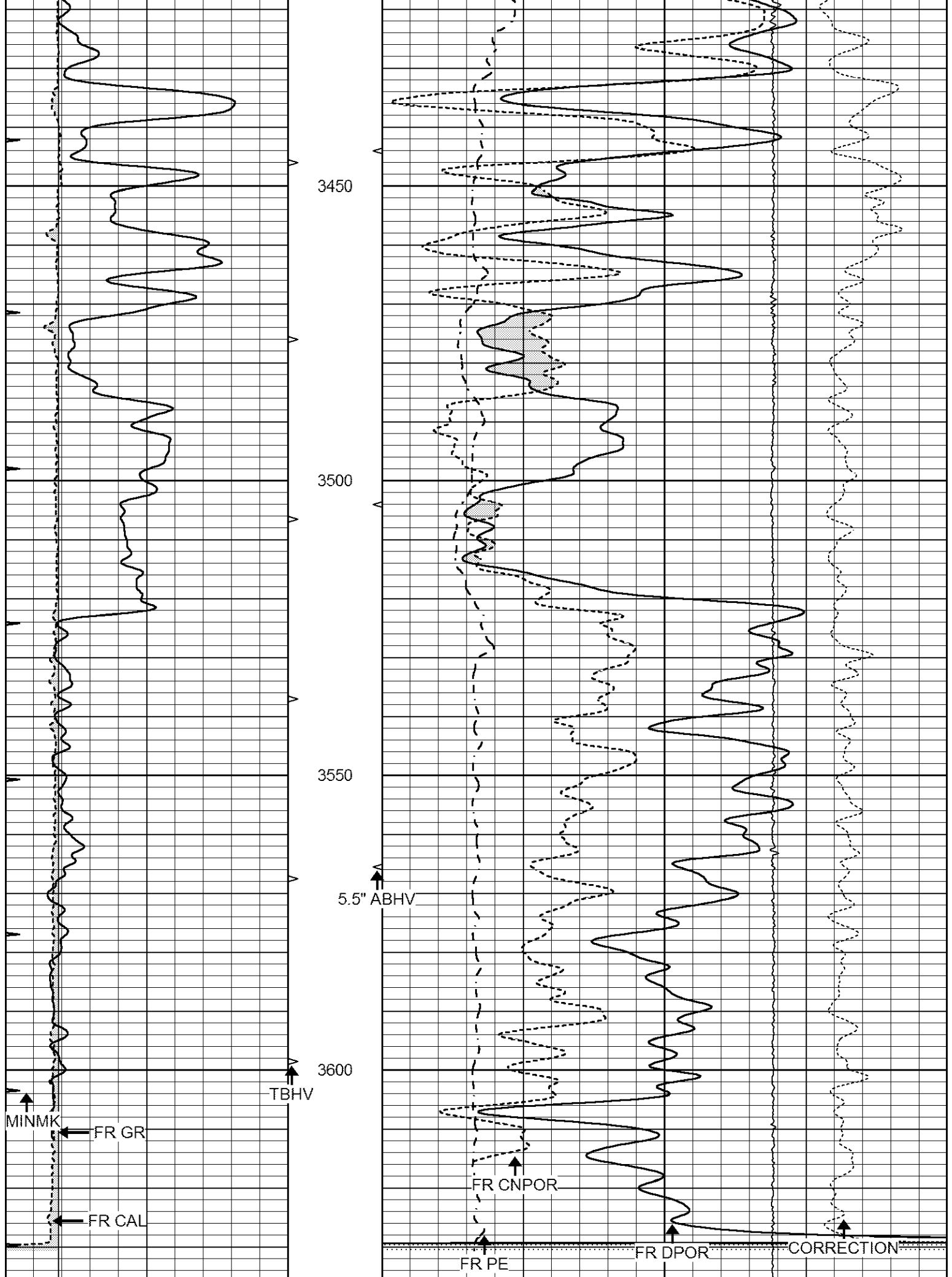
Database File 7060pe.db  
 Dataset Pathname pass4D  
 Presentation Format \_ldt\_neu  
 Dataset Creation Thu Jan 11 22:33:07 2024  
 Charted by Depth in Feet scaled 1:240

0	GAMMA RAY (GAPI)	150	ABHV	30	COMPENSATED DENSITY (pu)			-10	
6	CALIPER (in)	16	10 (ft3)	0	COMPENSATED NEUTRON (pu)			-10	
0	MINMK	20	TBHV	0	PE	10	-0.25	CORRECTION (g/cc)	0.25
			0 (ft3)	10			0	LTEN (lb)	5000







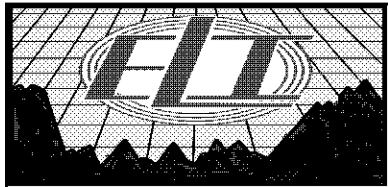


2.71 LIMESTONE MATRIX

LTD 3650  
3650

LTEN →

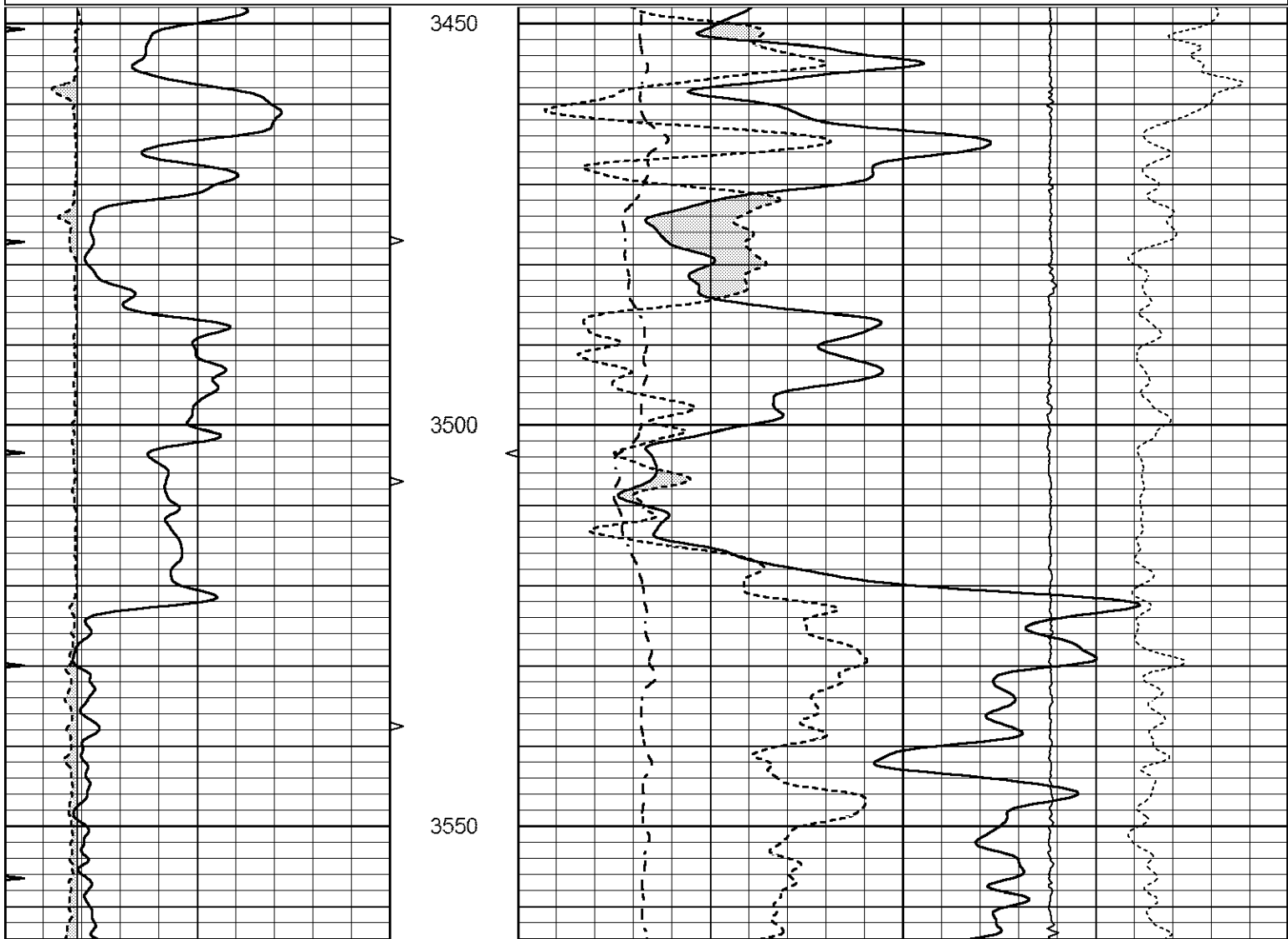
0	GAMMA RAY (GAPI)	150	ABHV	30	COMPENSATED DENSITY (pu)	-10
6	CALIPER (in)	16	10 (ft3)	0 30	COMPENSATED NEUTRON (pu)	-10
0	MINMK	20	TBHV	0	PE	10 -0.25 CORRECTION (g/cc) 0.25
			0 (ft3)	10		0 LTEN (lb) 5000

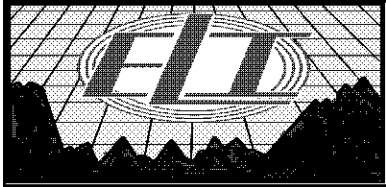
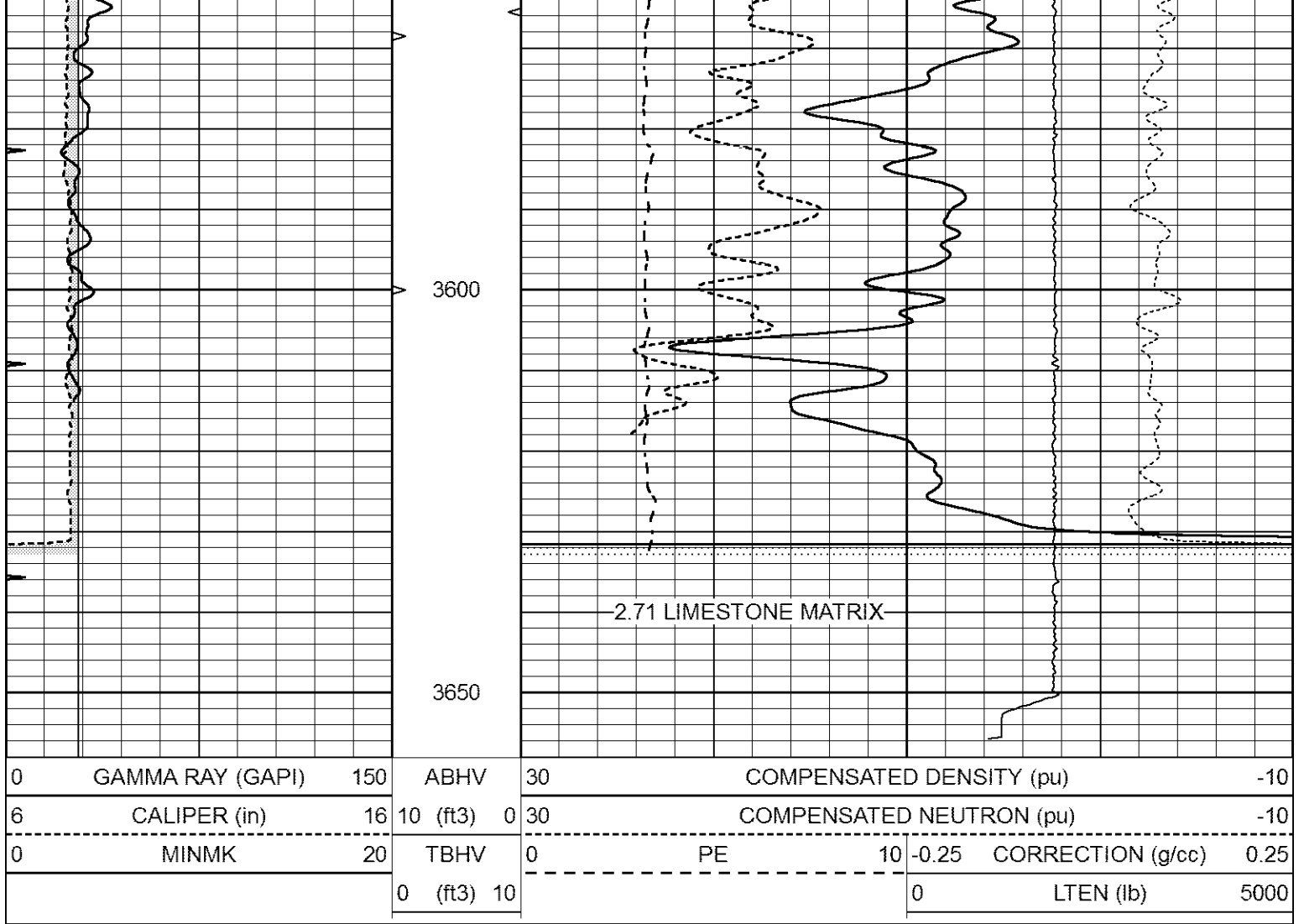


# LIMESTONE MATRIX REPEAT

Database File 7060pe.db  
 Dataset Pathname pass3LSR  
 Presentation Format \_ldt\_neu  
 Dataset Creation Thu Jan 11 22:39:24 2024  
 Charted by Depth in Feet scaled 1:240

0	GAMMA RAY (GAPI)	150	ABHV	30	COMPENSATED DENSITY (pu)	-10
6	CALIPER (in)	16	10 (ft3)	0 30	COMPENSATED NEUTRON (pu)	-10
0	MINMK	20	TBHV	0	PE	10 -0.25 CORRECTION (g/cc) 0.25
			0 (ft3)	10		0 LTEN (lb) 5000

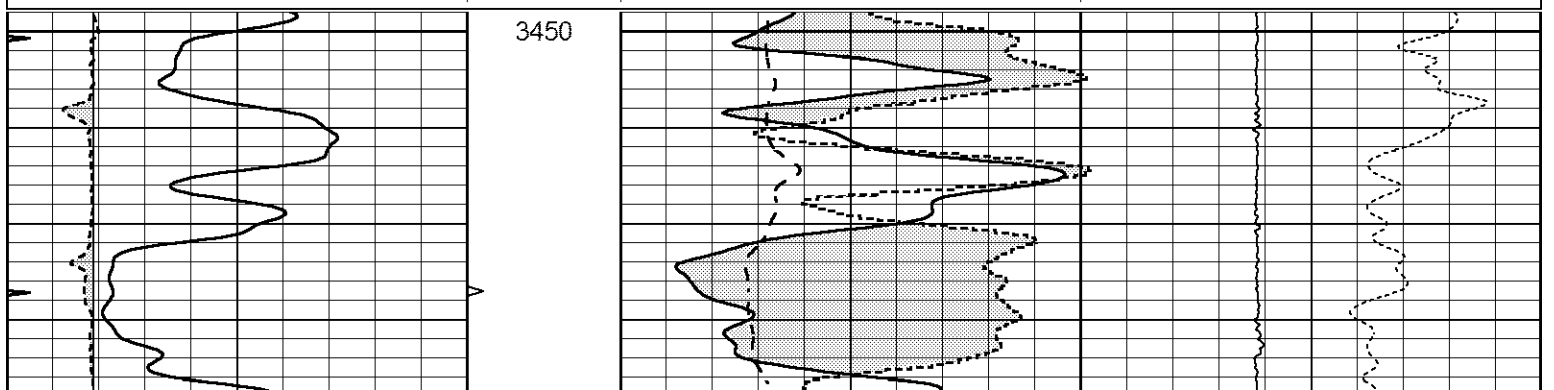


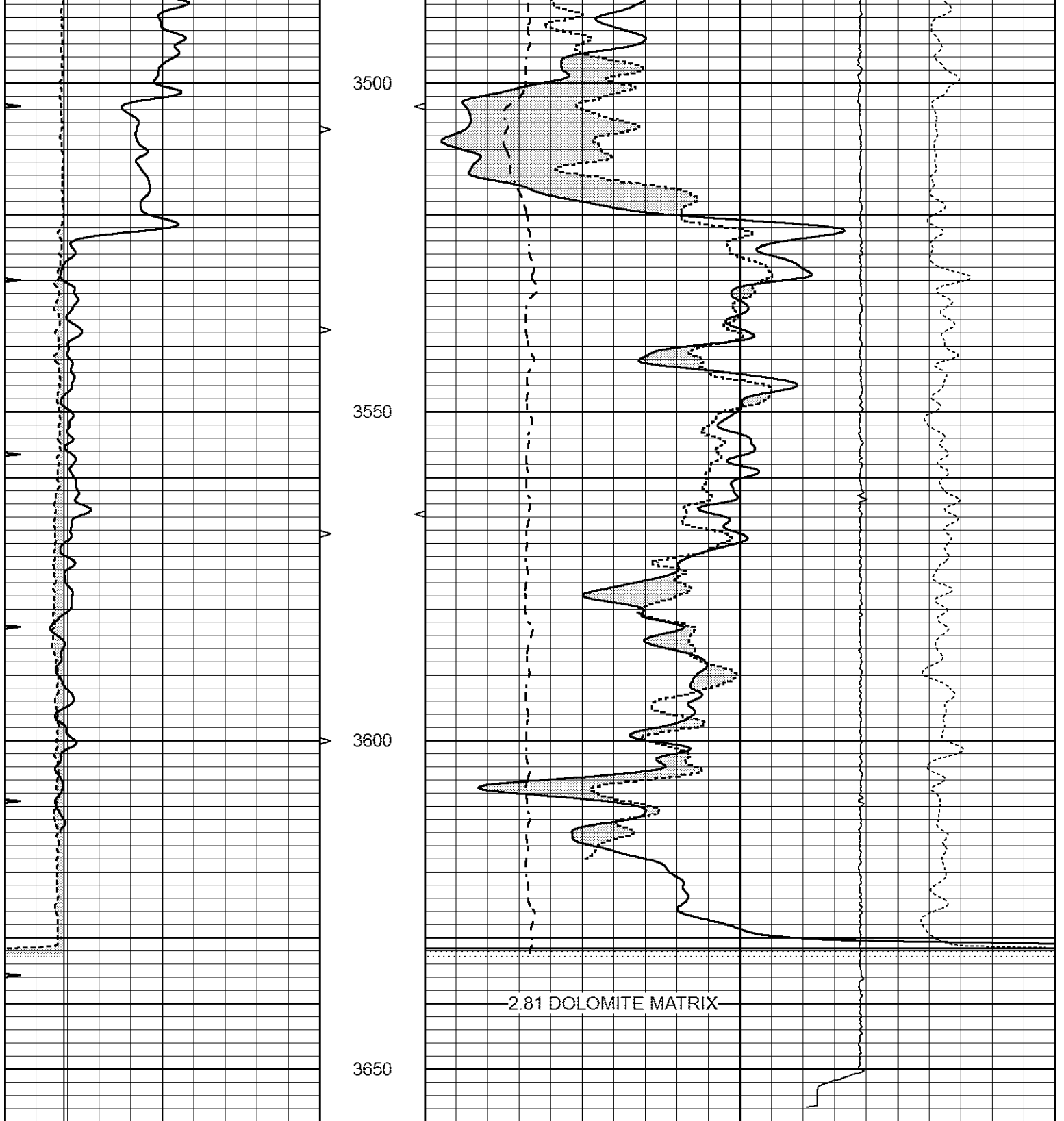


# DOLOMITE MATRIX REPEAT

Database File 7060pe.db  
 Dataset Pathname pass3DOLO  
 Presentation Format \_ldt\_neu  
 Dataset Creation Thu Jan 11 22:41:47 2024  
 Charted by Depth in Feet scaled 1:240

0	GAMMA RAY (GAPI)	150	ABHV	30	COMPENSATED DENSITY (pu)	-10	
6	CALIPER (in)	16	10 (ft3)	0 30	COMPENSATED NEUTRON (pu)	-10	
0	MINMK	20	TBHV	0	PE	10 -0.25	
			0 (ft3)	10		CORRECTION (g/cc)	0.25
					0	LTEN (lb)	5000





0	GAMMA RAY (GAPI)	150	ABHV	30	COMPENSATED DENSITY (pu)	-10
6	CALIPER (in)	16	10 (ft3)	0 30	COMPENSATED NEUTRON (pu)	-10
0	MINMK	20	TBHV	0	PE	10 -0.25 CORRECTION (g/cc) 0.25
			0 (ft3)	10		0 LTEN (lb) 5000

Calibration Report

Database File 7060pe.db  
 Dataset Pathname pass4D  
 Dataset Creation Thu Jan 11 22:33:07 2024

Serial-Model:  
 Surface Cal Performed:  
 Downhole Cal Performed:  
 After Survey Verification Performed:

FW1410-55-Probe  
 Sat Jul 29 01:57:42 2023  
 Tue Feb 19 11:44:24 2019  
 Tue Feb 19 11:44:27 2019

Surface Calibration

Loop:	Readings			References			Results	
	Air	Loop	V	Air	Loop	mmho/m	m	b
Deep	0.011	0.656	V	1.000	400.000	mmho/m	565.000	-8.500
Medium	-0.000	0.731	V	1.000	464.000	mmho/m	530.000	-14.000
Internal:	Zero	Cal	V	Zero	Cal	mmho/m	m	b
Deep	0.007	0.649	V	0.000	400.000	mmho/m	623.784	-4.595
Medium	0.004	0.743	V	0.000	464.000	mmho/m	627.284	-2.251

Downhole Calibration

	Readings			References			Results	
	Zero	Cal	mmho/m	Zero	Cal	mmho/m	m'	b'
Deep	-0.824	395.917	mmho/m	-0.976	397.550	mmho/m	1.004	-0.149
Medium	3.565	471.327	mmho/m	3.468	471.590	mmho/m	1.001	-0.099
LL3		7.503	V		1500.000	Ohm-m		
		0.001	V		20.000	Ohm-m		
		-7.481	V		3745.000	mmho-m		

After Survey Verification

	Readings			Targets			Results	
	Zero	Cal	mmho/m	Zero	Cal	mmho/m	m'	b'
Deep	0.000	0.000	mmho/m	-0.824	395.917	mmho/m	1.000	0.000
Medium	0.000	0.000	mmho/m	3.565	471.327	mmho/m	1.000	0.000
LL3		0.000	Ohm-m		1500.000	Ohm-m		
		0.000	Ohm-m		20.000	Ohm-m		
		0.000	mmho-m		3745.000	mmho-m		

Litho Density Calibration Report  
 Serial: 003 Model: PRB

Master Calibration

Performed Mon May 22 11:42:40 2023

	Background	Magnesium	Aluminum	Aluminum+Fe	
Window 1	1512.3	7465.7	2749.0	2519.6	cps
Window 2	1398.8	6705.7	2507.3	2313.8	cps
Window 3	1289.2	5259.5	2124.1	2009.6	cps
Window 4	351.1	351.6	351.8	353.2	cps
Long Space	0.0	5306.9	1108.5	915.0	cps
Short Space	3.3	2239.9	1441.2	1212.0	cps
Rho		1.7100	2.5900	0.0000	g/cc
Pe		2.0000	2.7500	5.7900	
Rib Angle	: 44.3	Rib Slope	: 0.975	Density/Spine Ratio	: 0.541
Spine Angle	: 74.3	Spine Slope	: 3.551	Spine Intercept	: -18.8

Before Survey Verification

Performed Wed Dec 31 18:00:00 1969

	Background	Magnesium	Aluminum	Aluminum+Fe	
Window 1	0.0	0.0	0.0	0.0	cps
Window 2	0.0	0.0	0.0	0.0	cps
Window 3	0.0	0.0	0.0	0.0	cps
Window 4	0.0	0.0	0.0	0.0	cps

Long Space	0.0	0.0	0.0	0.0	cps
Short Space	0.0	0.0	0.0	0.0	cps
Measured Rho		0.0000	0.0000	0.0000	g/cc
Measured Correction		0.0000	0.0000	0.0000	g/cc
Measured Pe			0.0000	0.0000	

After Survey Verification

Performed Wed Dec 31 18:00:00 1969

Window 1	0.0	0.0	0.0	0.0	cps
Window 2	0.0	0.0	0.0	0.0	cps
Window 3	0.0	0.0	0.0	0.0	cps
Window 4	0.0	0.0	0.0	0.0	cps
Long Space	0.0	0.0	0.0	0.0	cps
Short Space	0.0	0.0	0.0	0.0	cps
Measured Rho		0.0000	0.0000	0.0000	g/cc
Measured Correction		0.0000	0.0000	0.0000	g/cc
Measured Pe			0.0000	0.0000	

### Compensated Neutron Calibration Report

Serial Number: 080621PMC  
Tool Model: NABORS

#### PRE-SURVEY VERIFICATION

Detector	Readings	Measured	Target
Short Space	cps		
Long Space	cps	pu	pu

#### POST-SURVEY VERIFICATION

Detector	Readings	Measured	Target
Short Space	cps		
Long Space	cps	pu	pu

### Gamma Ray Calibration Report

Serial Number: 46001  
Tool Model: Probe1  
Performed: Thu Apr 20 09:55:57 2023

Calibrator Value: 1.0 GAPI  
Background Reading: 0.0 cps  
Calibrator Reading: 1.0 cps  
Sensitivity: 0.4300 GAPI/cps