



MICRO LOG

Company JOE GERSTNER OIL, LLC
 Well MYERS #1
 Field BEECHING EAST
 County RUSH State KANSAS

Location: 943 FSL & 2022 FEL
 SE - NW - SW - SE
 SEC 1 TWP 16S RGE 16W
 Permanent Datum GROUND LEVEL Elevation 1926
 Log Measured From KELLY BUSHING 7' A.G.L
 Drilling Measured From KELLY BUSHING
 Other Services
 CDL/CNL
 PE/DIL
 Elevation
 K.B. 1933
 D.F. 1931
 G.L. 1926

Date	1/11/24
Run Number	TWO
Depth Driller	3650
Depth Logger	3650
Bottom Logged Interval	3648
Top Log Interval	2800
Casing Driller	8.625 @ 1021
Casing Logger	1021
Bit Size	7.875
Type Fluid in Hole	CHEMICAL MUD
Density / Viscosity	8.85/50
PH / Fluid Loss	11.0/8.0
Source of Sample	FLOWLINE
Rm @ Meas. Temp	.900 @ 65F
Rmt @ Meas. Temp	.675 @ 65F
Rmc @ Meas. Temp	1.08 @ 65F
Source of Rmf / Rmc	MEASUREMENT
Rm @ BHT	.518 @ 113F
Time Circulation Stopped	4 HOURS
Time Logger on Bottom	11:30 P.M.
Maximum Recorded Temperature	113F
Equipment Number	3802
Location	HAYS, KANSAS
Recorded By	COLE ROBBEN
Witnessed By	ANDREW STENZEL

<<< Fold Here >>>

All interpretations are opinions based on inferences from electrical or other measurements and we cannot and do not guarantee the accuracy or correctness of any interpretation, and we shall not, except in the case of gross or willful negligence on our part, be liable or responsible for any loss, costs, damages, or expenses incurred or sustained by anyone resulting from any interpretation made by any of our officers, agents or employees. These interpretations are also subject to our general terms and conditions set out in our current Price Schedule.

Comments

THANK YOU FOR USING ELI WIRELINE SERVICES, HAYS, KS. (785) 628-6395

DIRECTIONS:

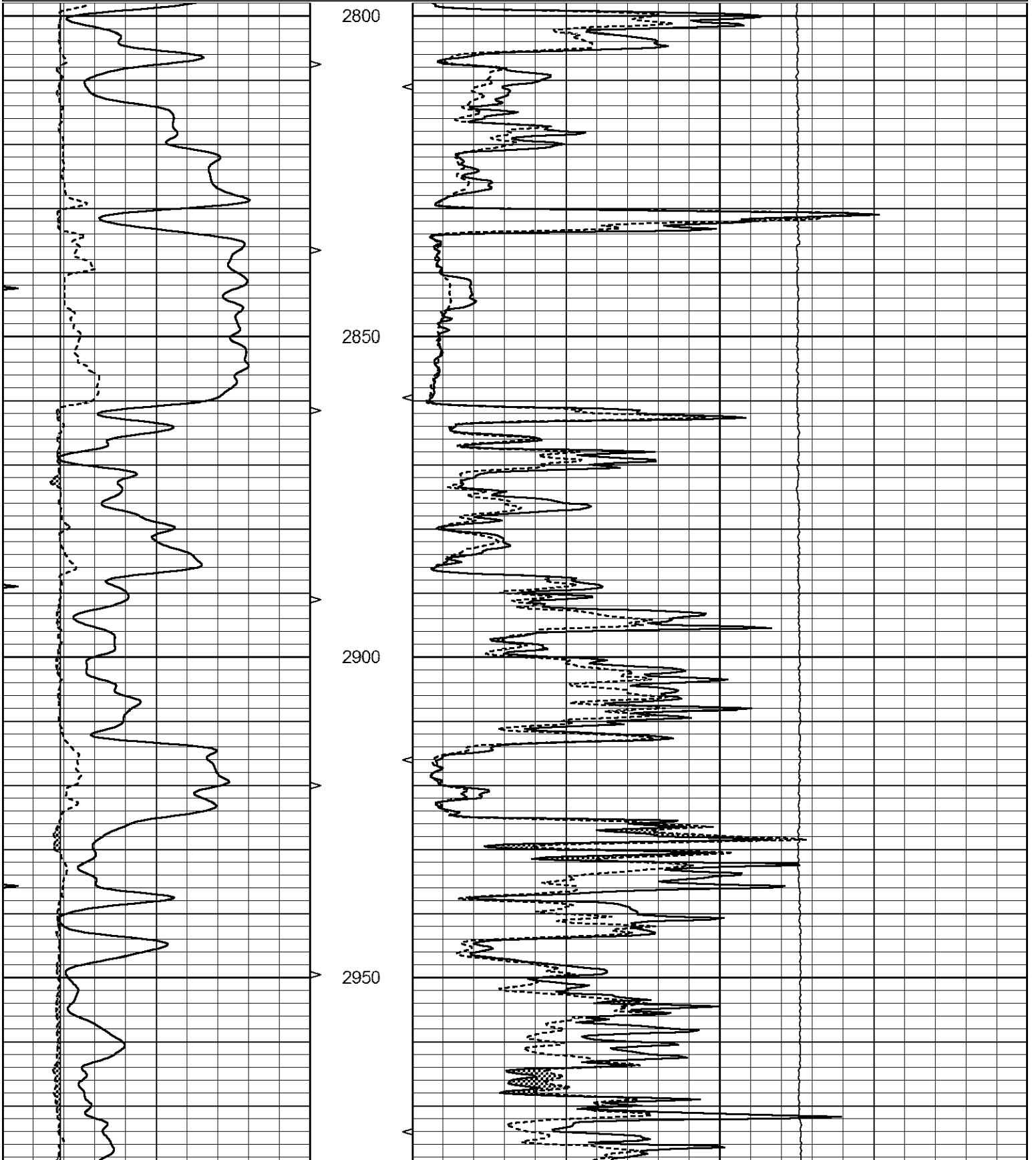
FROM GORHAM EXIT OFF I70 GO SOUTH TO RUSH COUNTY LINE AT T IN ROAD, 2 MILES WEST TO 'CR390', 1 MILE SOUTH TO 'B' ROAD, 3/4 MILE EAST, NORTH INTO

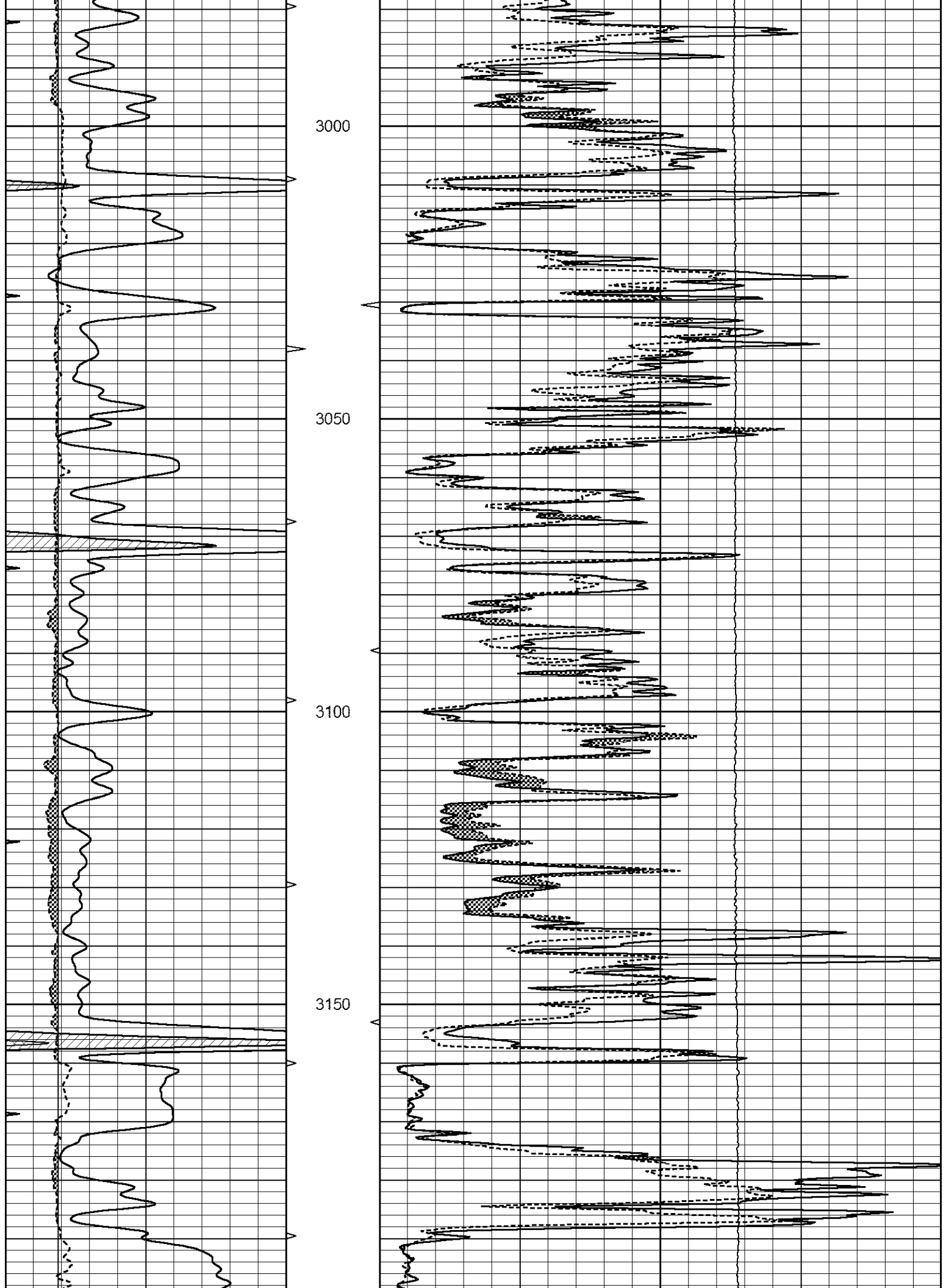


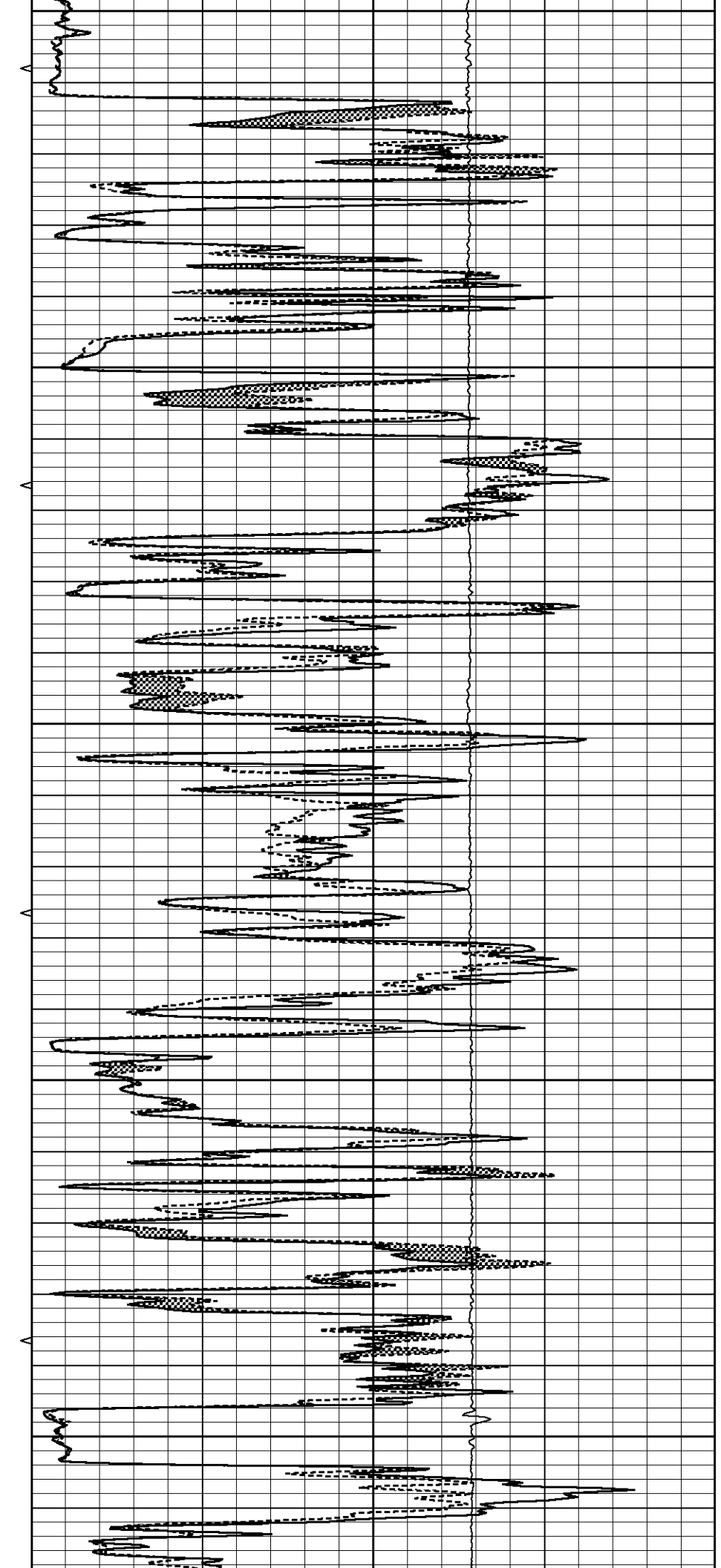
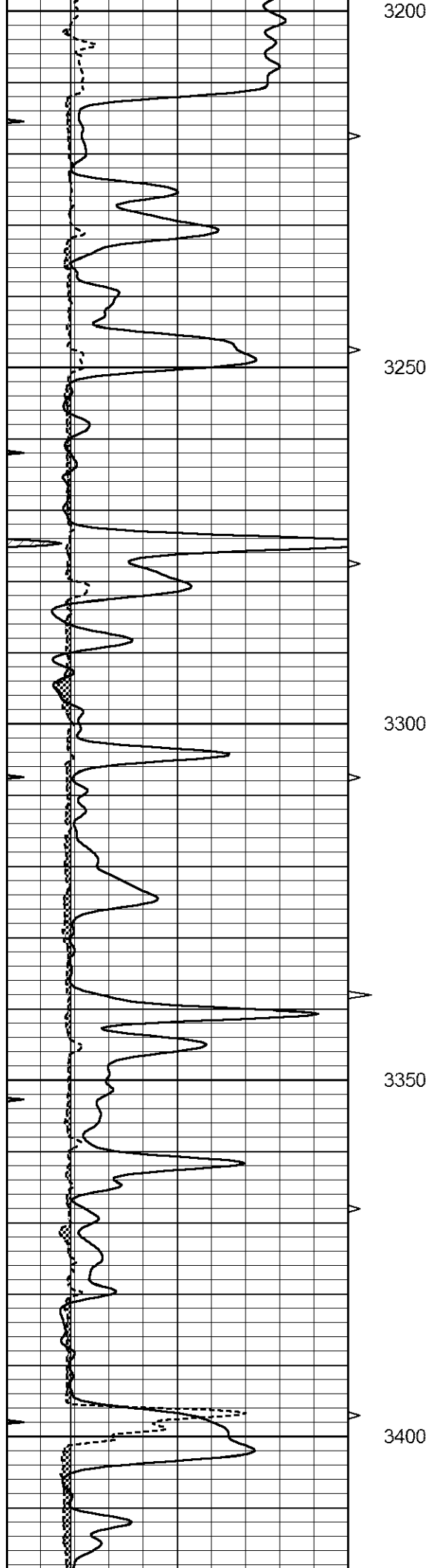
MAIN SECTION

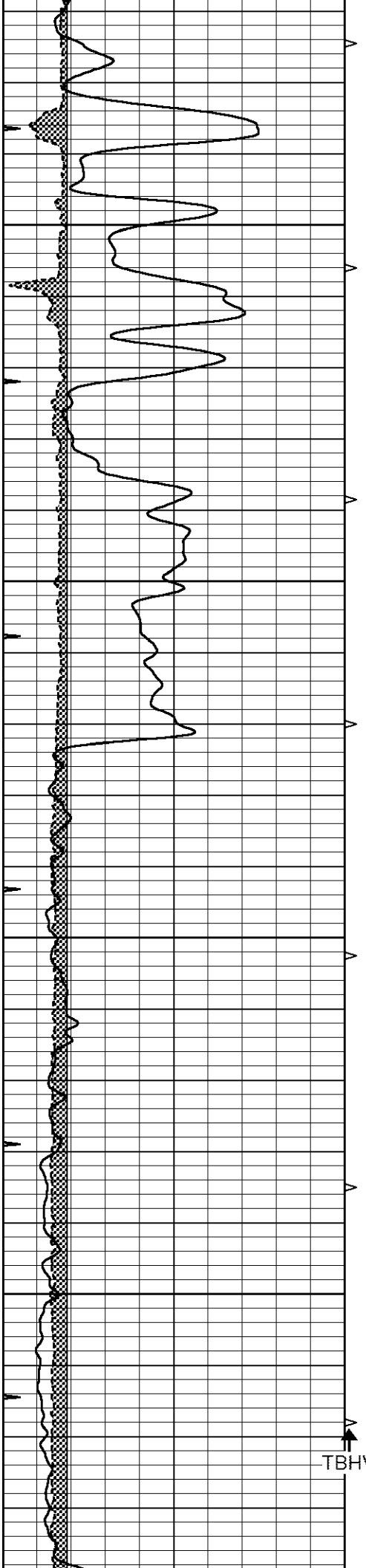
Database File 7060pe.db
 Dataset Pathname pass7.9
 Presentation Format _micro
 Dataset Creation Thu Jan 11 23:44:25 2024
 Charted by Depth in Feet scaled 1:240

0	GAMMA RAY (GAPI)	150	ABHV	0	MEL1.5 (Ohm-m)	40	
6	CALIPER (in)	16	10 (ft3)	0	MEL2.0 (Ohm-m)	40	
0	MINMK	20	TBHV		0	LTEN (lb)	5000
			0 (ft3)	10			









3450

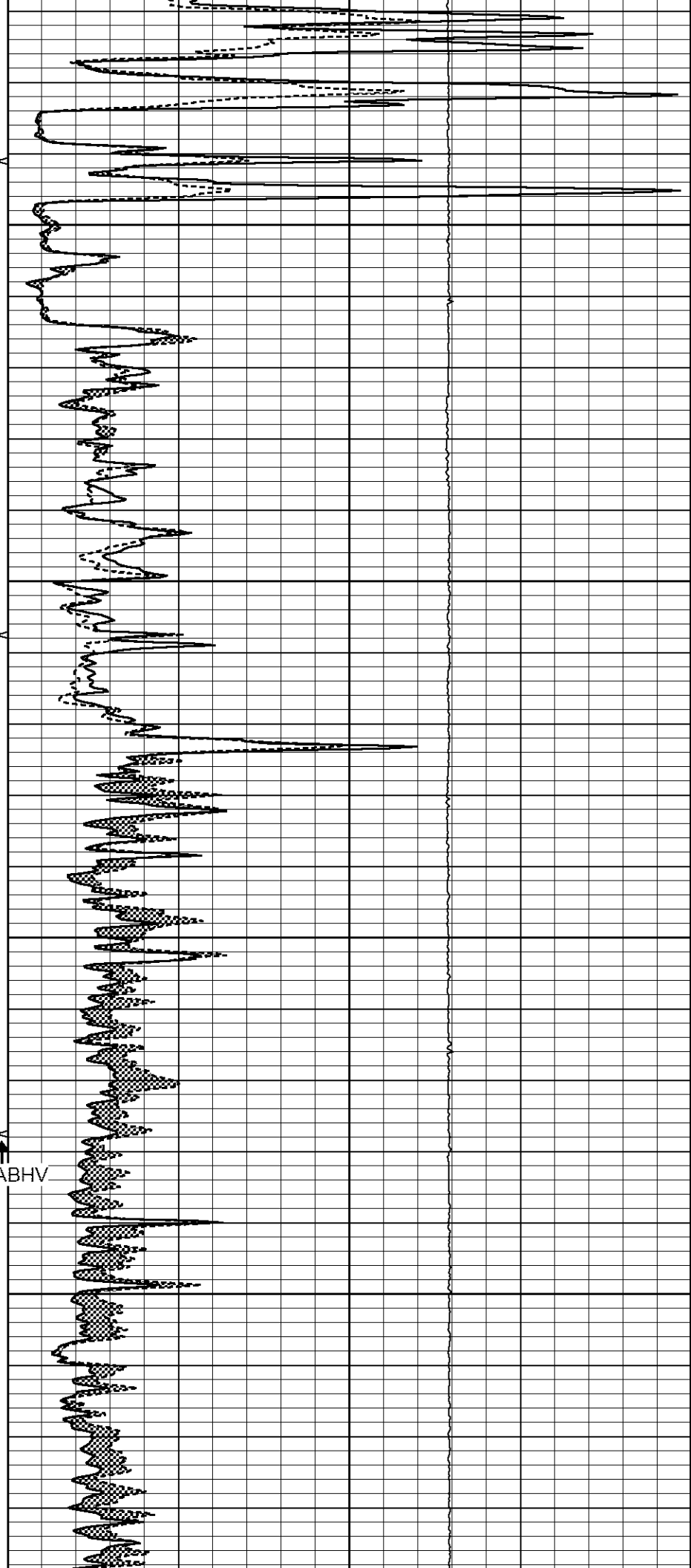
3500

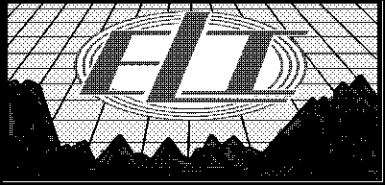
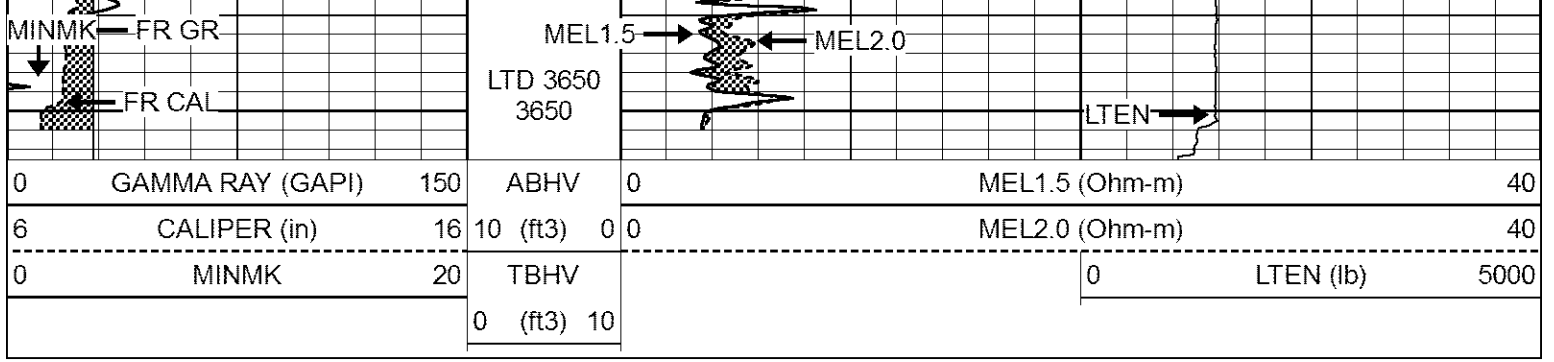
3550

3600

5.5" ABHV

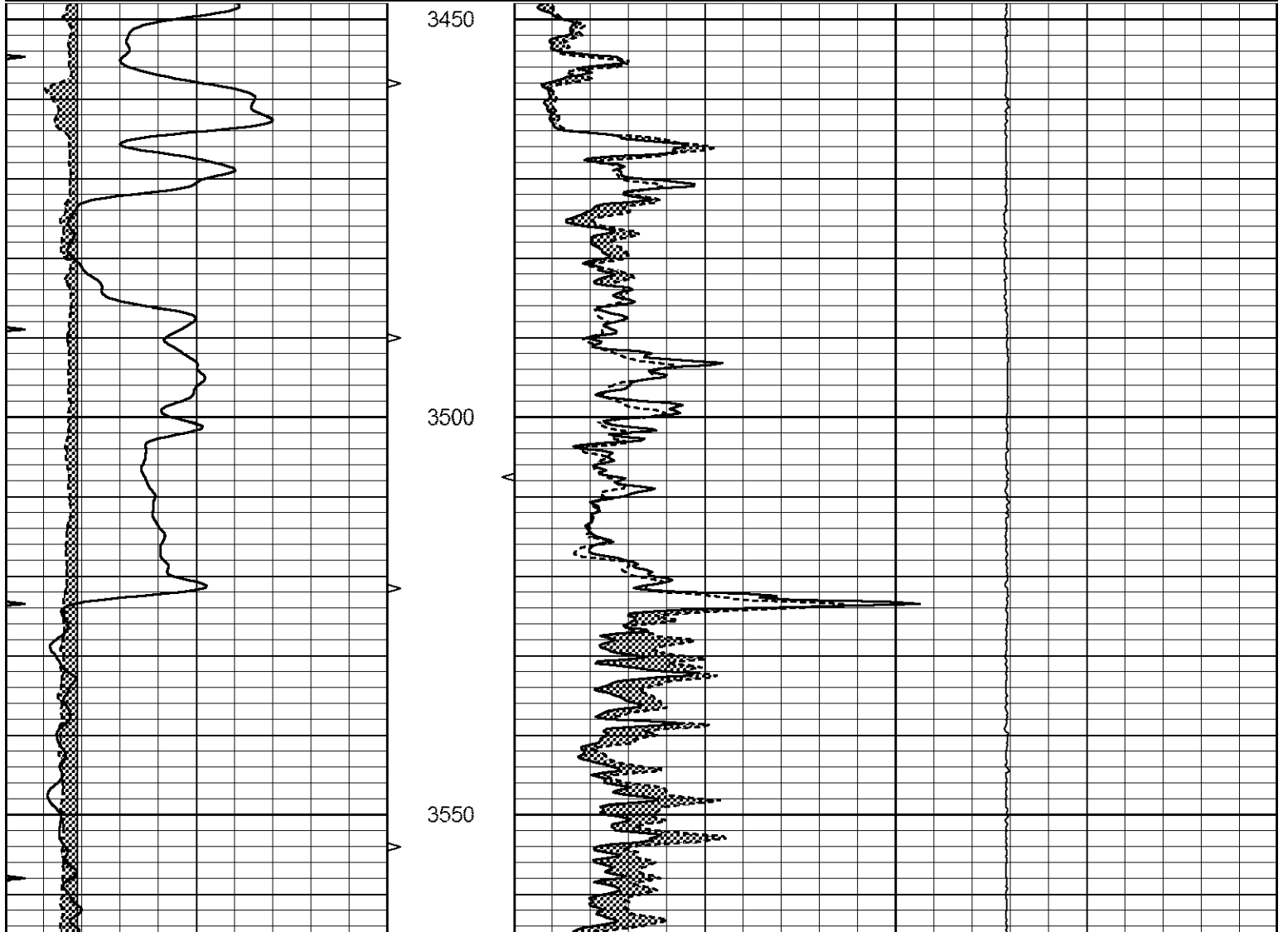
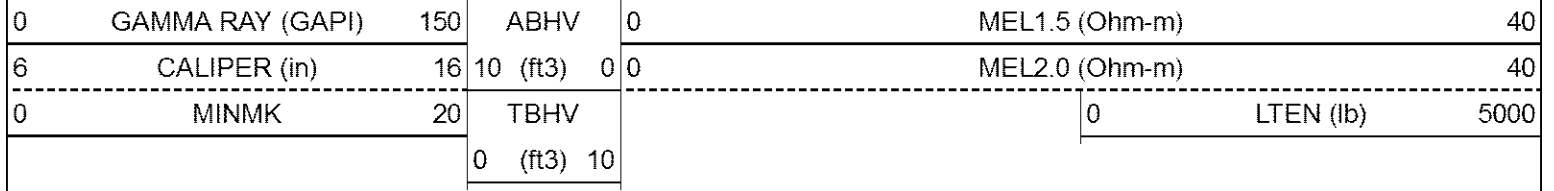
TBHV

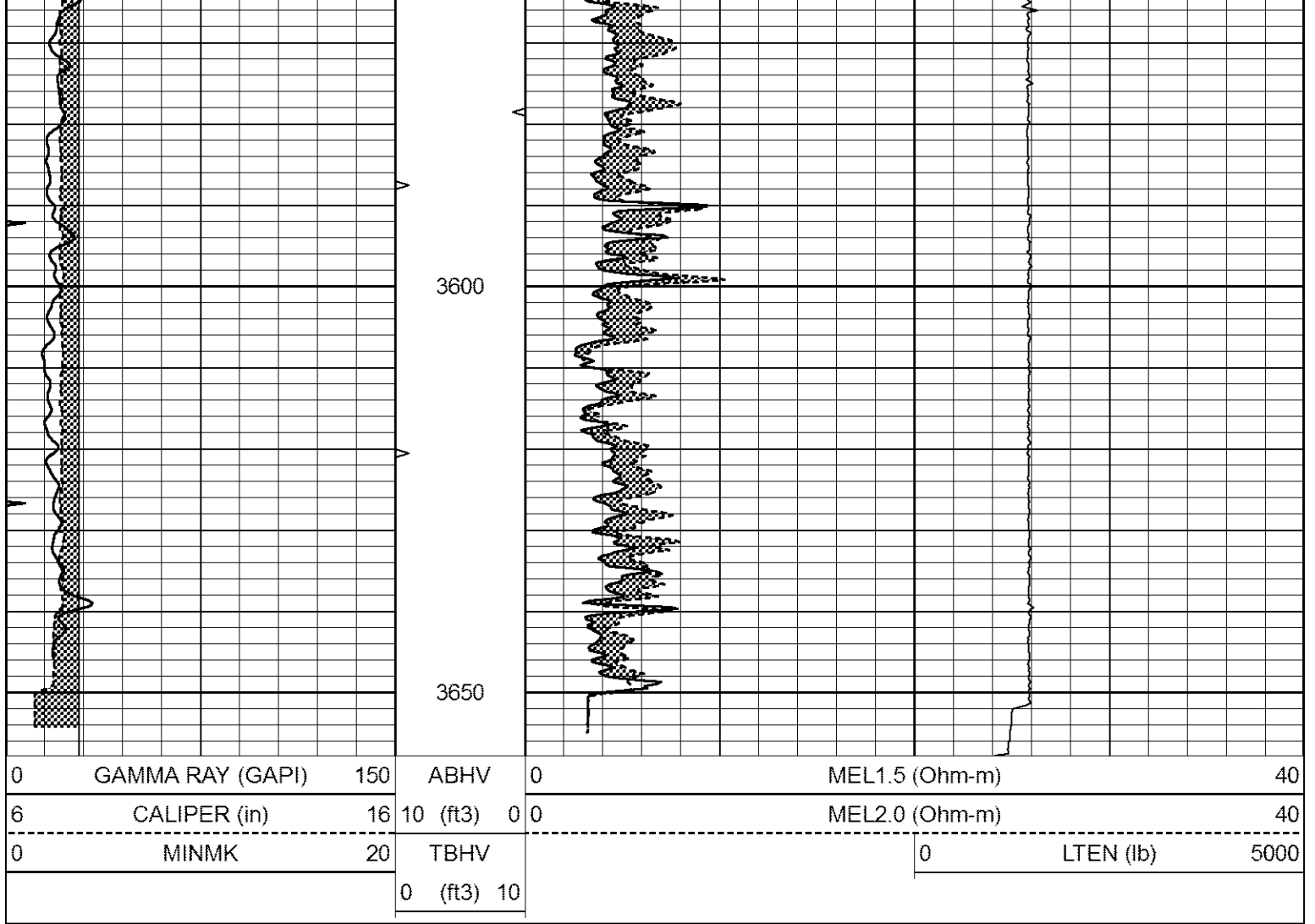




REPEAT SECTION

Database File 7060pe.db
 Dataset Pathname pass6.1
 Presentation Format _micro
 Dataset Creation Thu Jan 11 23:46:59 2024
 Charted by Depth in Feet scaled 1:240





Calibration Report

Database File 7060pe.db
 Dataset Pathname pass7.9
 Dataset Creation Thu Jan 11 23:44:25 2024

MICRO_USR Calibration Report

Serial Number:	070911	
Tool Model:	ProbeL	
Performed:	Fri Sep 15 13:51:55 2023	
Caliper Calibration:	Gain=4.500	Offset=0.820
References	Low Cal	High Cal
Readings	8.000	14.000
	1.451	3.049
1.5" Calibration:	Gain=19.000	Offset=0.000
References	Low Cal	High Cal
Readings	0.000	20.000
	0.006	1.243
2" Calibration:	Gain=34.000	Offset=-0.400
References	Low Cal	High Cal
Readings	0.000	20.000
	0.011	0.957

Microlog Calibration Report

Serial-Model:
Performed:

070911-ProbeL
Sat May 14 04:48:25 2022

	Readings			References			Results	
	Zero	Cal		Zero	Cal		m	b
Normal	0.0002	0.4836	V	0.0000	10.0000	Ohm-m	20.6908	-0.0051
Inverse	0.0018	0.6297	V	0.0000	10.0000	Ohm-m	15.9263	-0.0282
Caliper	0.0000	1.0000	V	0.0000	1.0000	in	1.0000	0.0000

Gamma Ray Calibration Report

Serial Number: 070558
Tool Model: Probe1
Performed: Sat Sep 30 18:38:35 2023

Calibrator Value: 1.0 GAPI

Background Reading: 0.0 cps
Calibrator Reading: 1.0 cps

Sensitivity: 0.2900 GAPI/cps