



**COMPENSATED  
DENSITY/NEUTRON  
PE LOG**

Company PRATER OIL & GAS OPERATIONS, INC.  
Well KERR UNIT #1-23  
Field COATS WEST  
County PRATT  
State KANSAS

Company PRATER OIL & GAS OPERATIONS, INC.  
Well KERR UNIT #1-23  
Field COATS WEST  
County PRATT State KANSAS

Location: API #: 15-151-22617-0000  
2465 FNL & 1505 FEL  
SE - SE - SW - NE  
SEC 23 TWP 29S RGE 14W  
Permanent Datum GROUND LEVEL Elevation 1942  
Log Measured From KELLY BUSHING 11' A.G.L.  
Drilling Measured From KELLY BUSHING  
Other Services  
DILMEL  
SONIC  
Elevation  
K.B. 1953  
D.F. 1951  
G.L. 1942

Date	11/23/25
Run Number	ONE
Depth Driller	4655
Depth Logger	4655
Bottom Logged Interval	4631
Top Log Interval	1950
Casing Driller	8.625 @ 475
Casing Logger	475
Bit Size	7.875
Type Fluid in Hole	CHEMICAL MUD
Density / Viscosity	9.1/60
pH / Fluid Loss	10.5/8.8
Source of Sample	FLOWLINE
Rm @ Meas. Temp	1.05 @ 69F
Rmf @ Meas. Temp	.788 @ 69F
Rmc @ Meas. Temp	1.26 @ 69F
Source of Rmf / Rmc	MEASUREMENT
Rm @ BHT	.594 @ 122F
Time Circulation Stopped	2 HOURS
Time Logger on Bottom	10:00 A.M.
Maximum Recorded Temperature	122F
Equipment Number	3802
Location	HAYS, KANSAS
Recorded By	COLE ROBBEN
Witnessed By	SCOTT ALBERG
	TJ DREILING

<<< Fold Here >>>

All interpretations are opinions based on inferences from electrical or other measurements and we cannot and do not guarantee the accuracy or correctness of any interpretation, and we shall not, except in the case of gross or willful negligence on our part, be liable or responsible for any loss, costs, damages, or expenses incurred or sustained by anyone resulting from any interpretation made by any of our officers, agents or employees. These interpretations are also subject to our general terms and conditions set out in our current Price Schedule.

Comments

THANK YOU FOR USING ELI WIRELINE SERVICES, HAYS, KS. ( 785 ) 628-6395

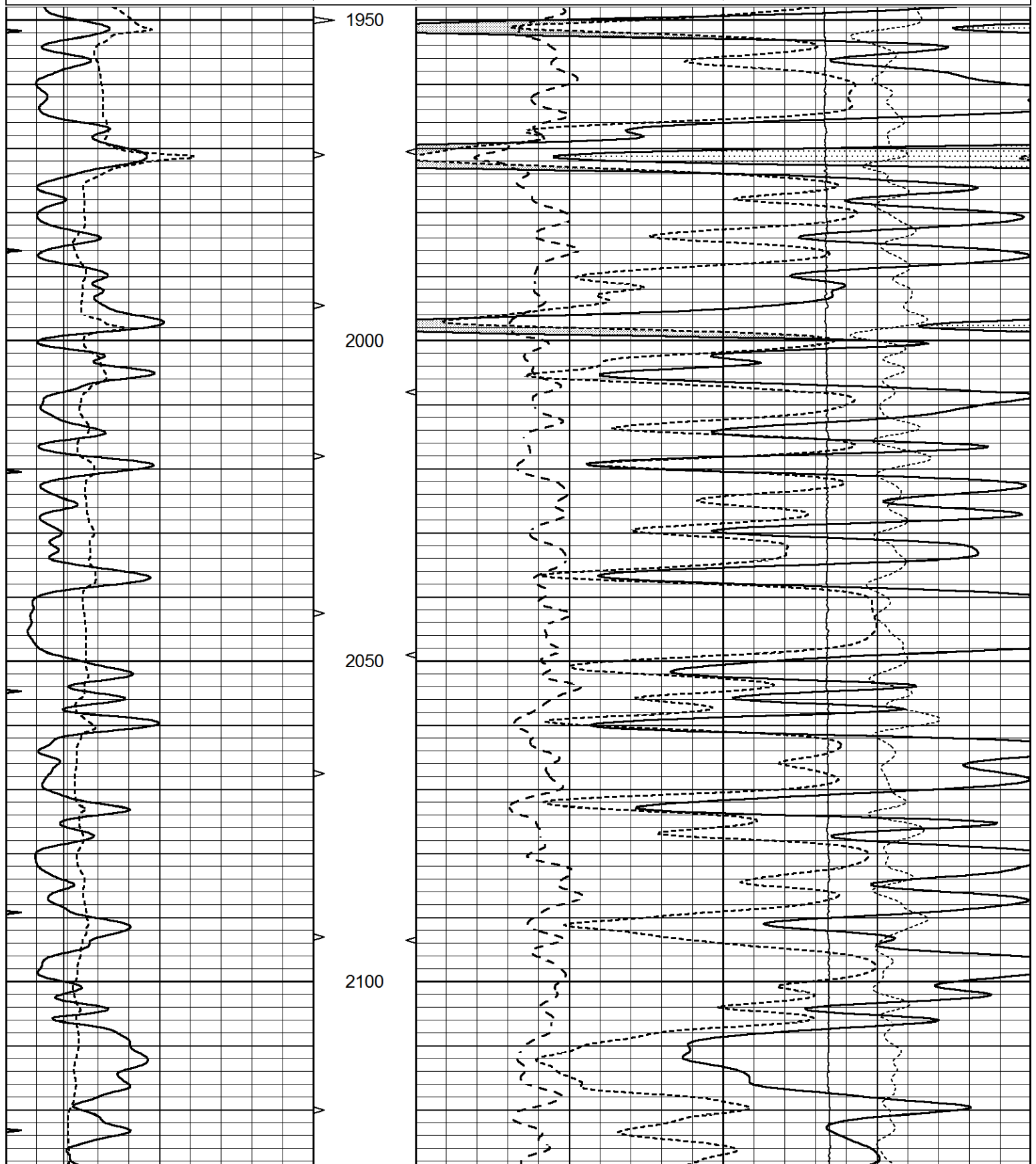
DIRECTIONS:  
FROM COATS, KANSAS - 1 MILE EAST ON SW 90TH, SOUTH 1/2 MILE ON SW 40TH, WEST  
ON SW 95TH 3/8TH MILE, NORTH INTO

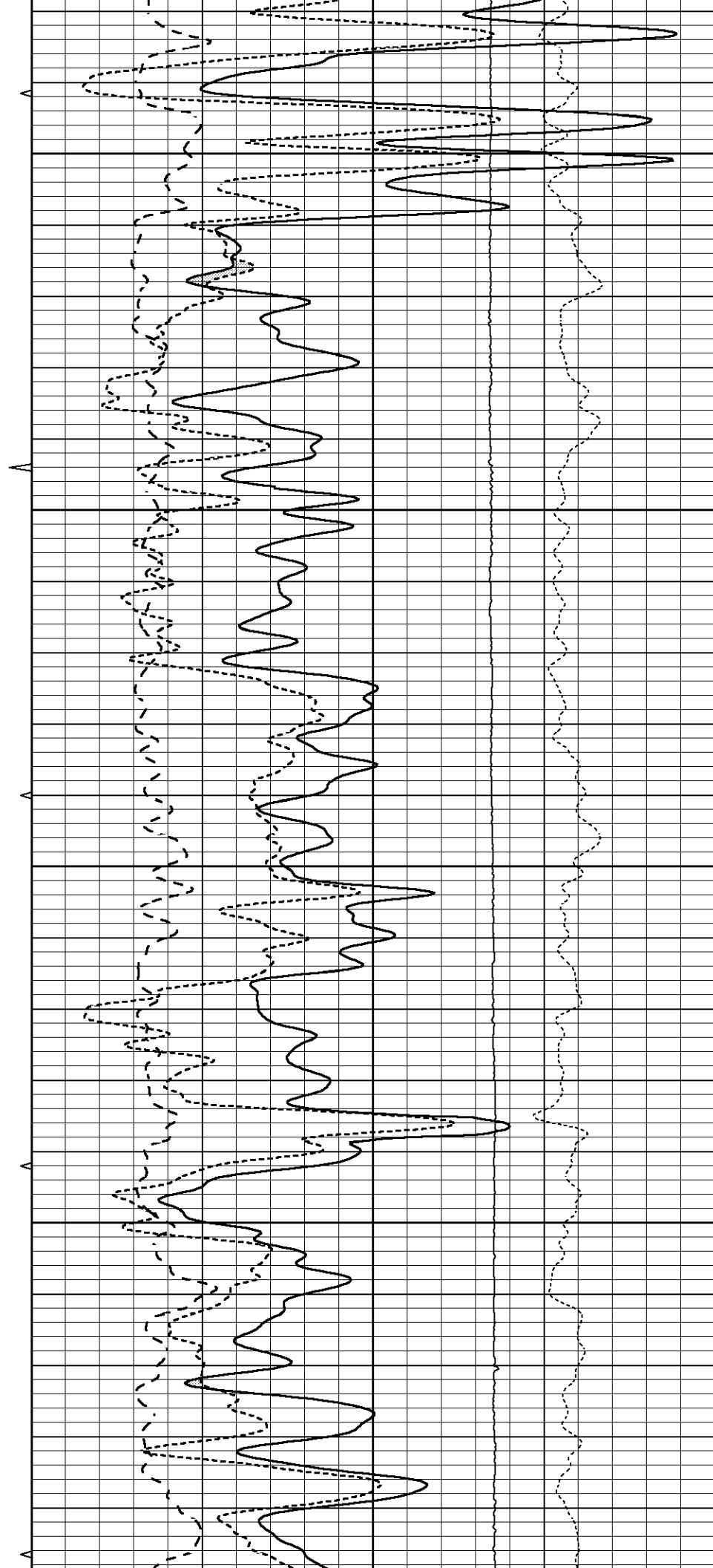
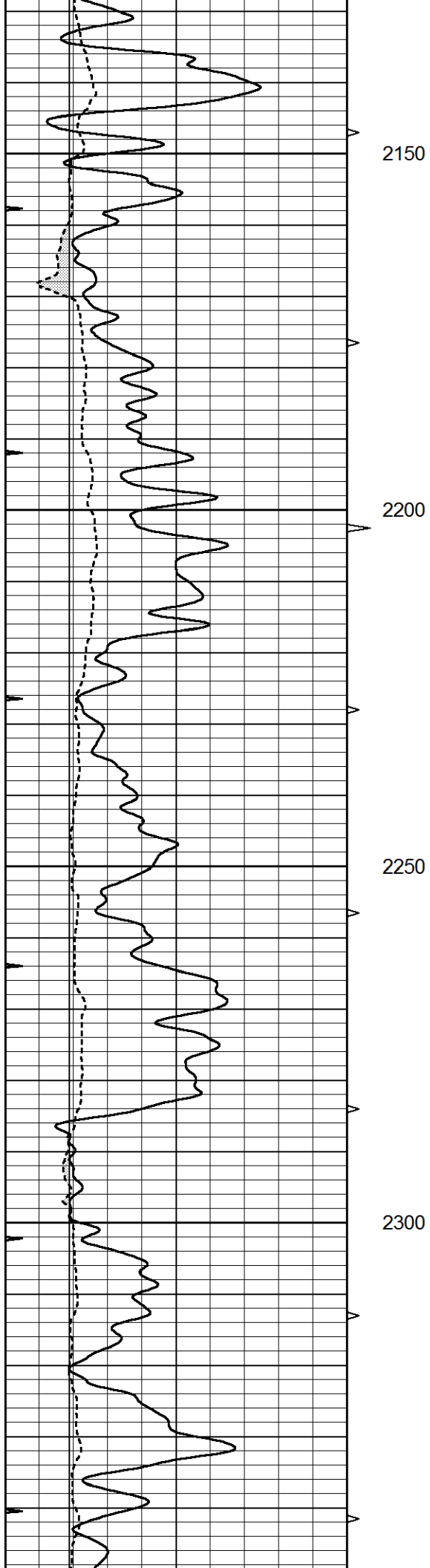


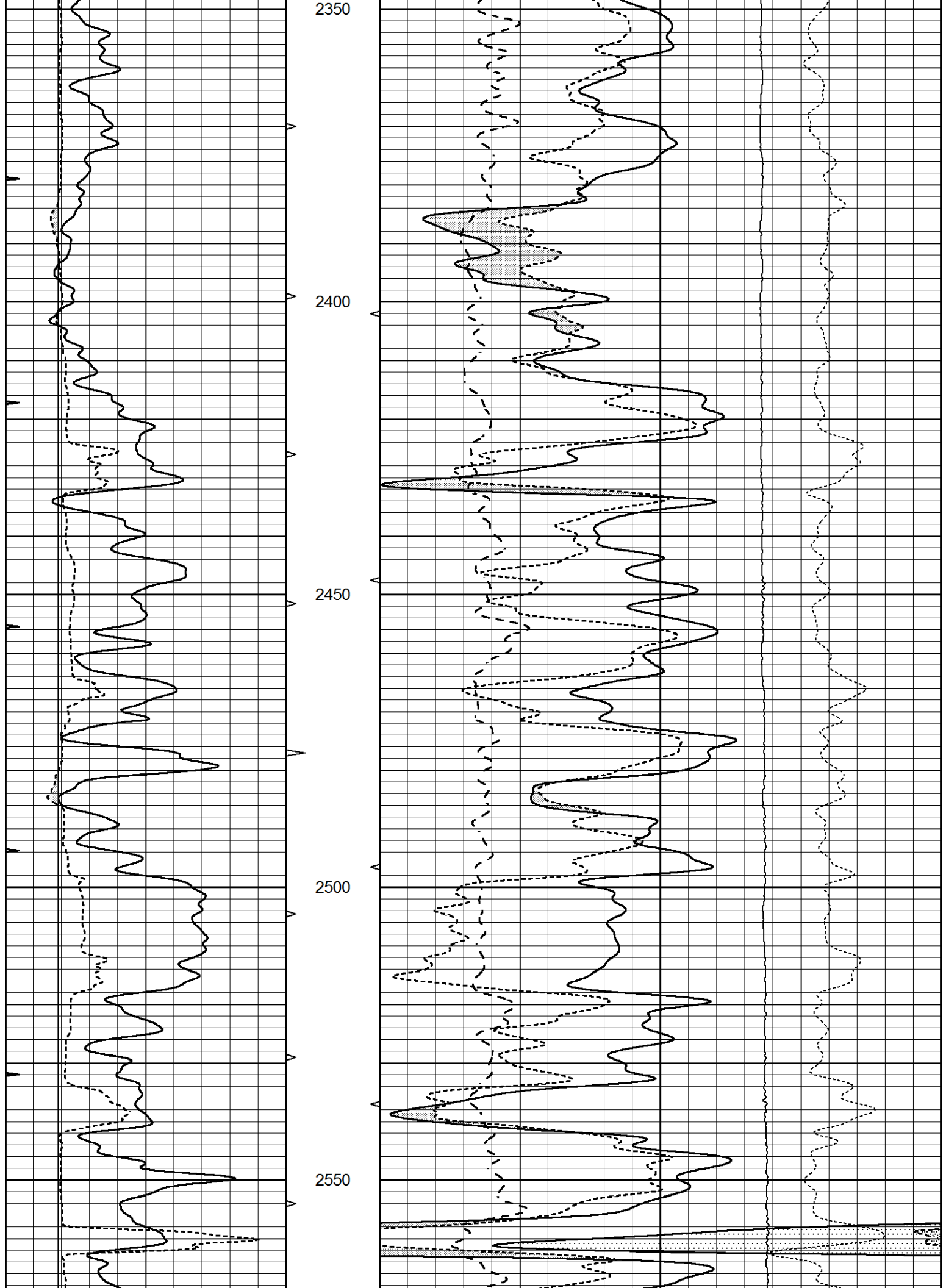
# MAIN SECTION

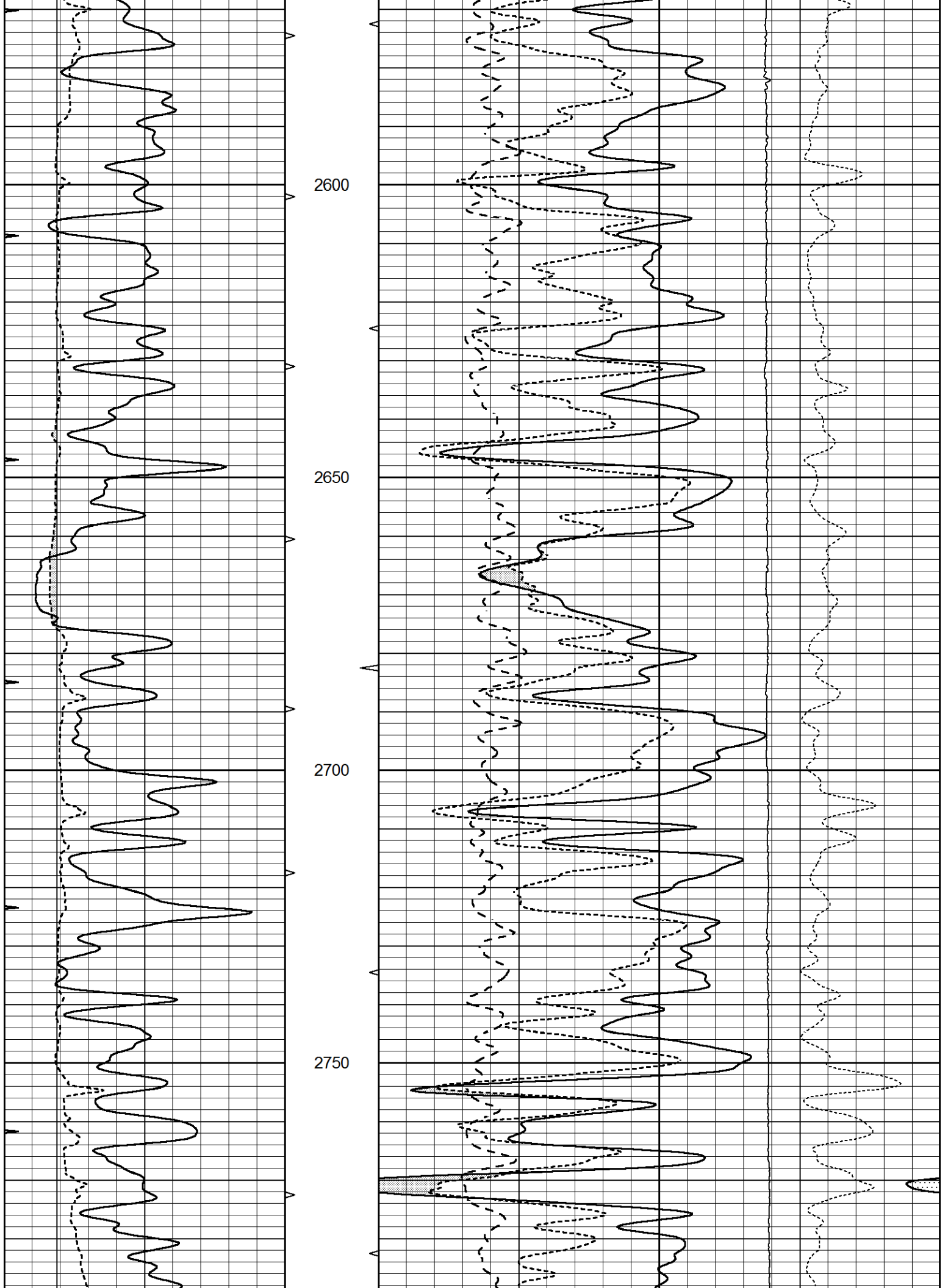
Database File 9738pe.db  
 Dataset Pathname pass3.TEST  
 Presentation Format \_ldt\_neu  
 Dataset Creation Mon Nov 24 14:32:12 2025  
 Charted by Depth in Feet scaled 1:240

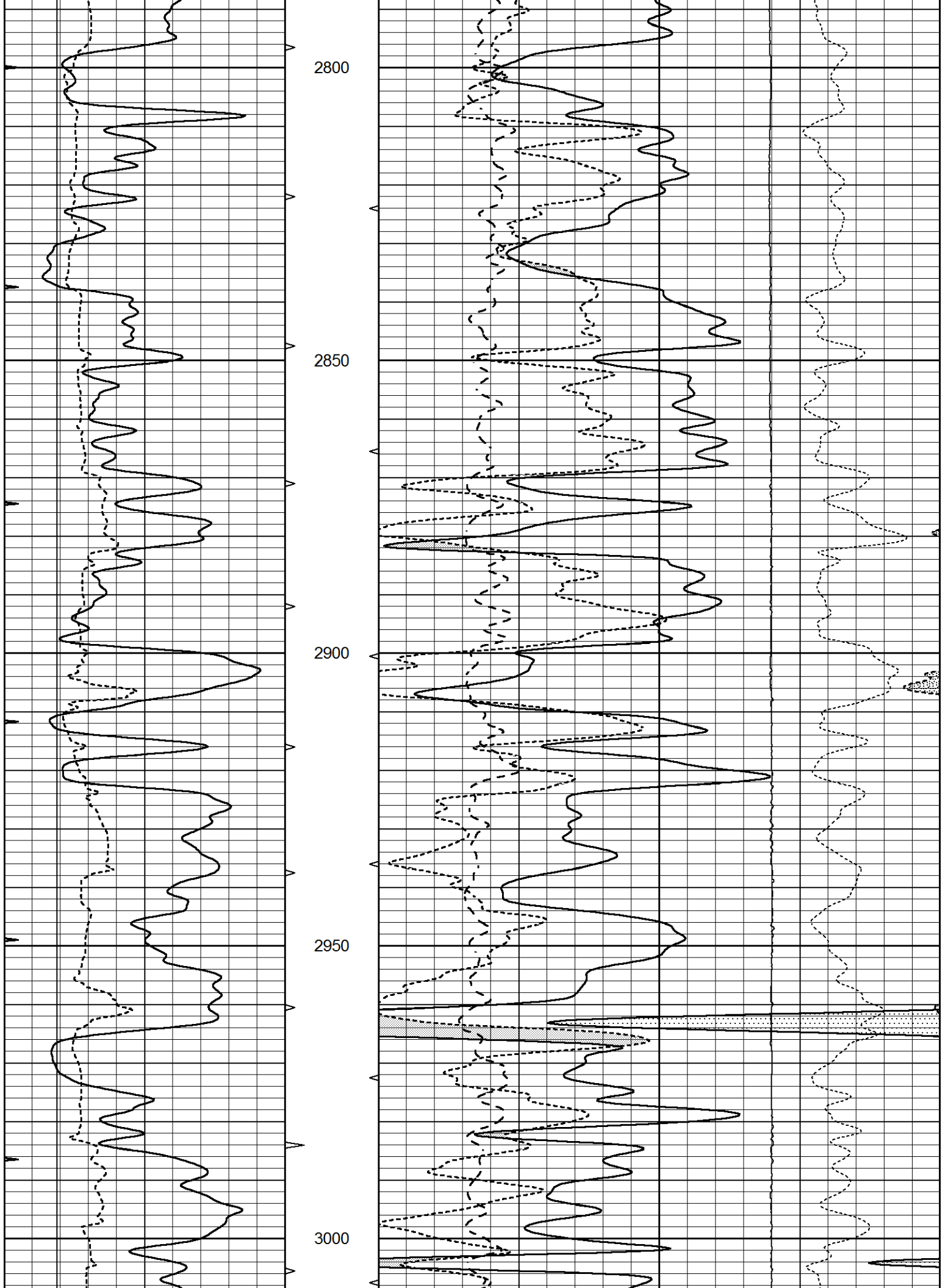
0	GAMMA RAY (GAPI)	150	ABHV	30	COMPENSATED DENSITY (pu)				-10
6	CALIPER (in)	16	10 (ft3)	0	COMPENSATED NEUTRON (pu)				-10
0	MINMK	20	TBHV	0	PE	10	-0.25	CORRECTION (g/cc)	0.25
			0 (ft3)	10			0	LTEN (lb)	5000

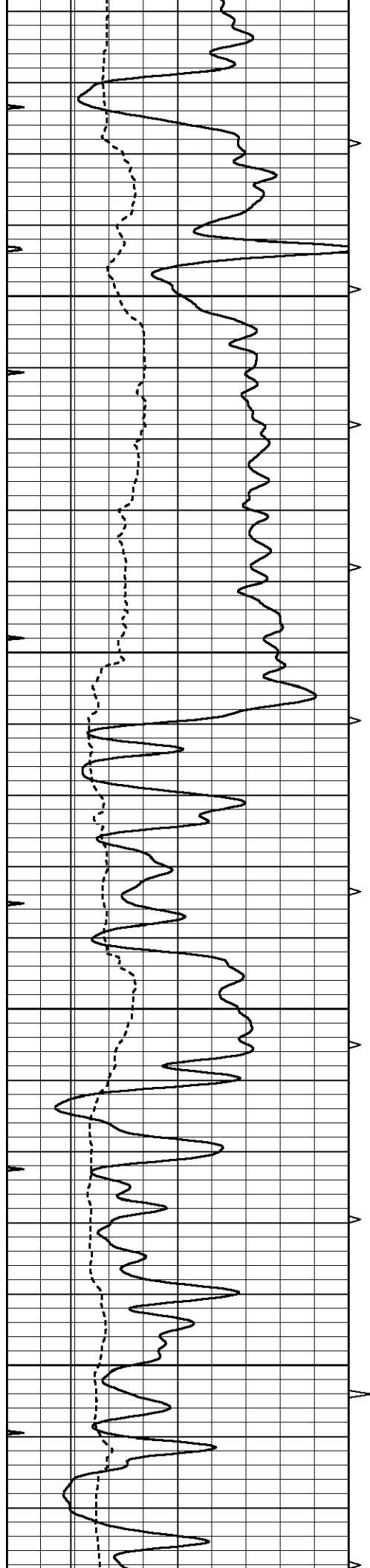










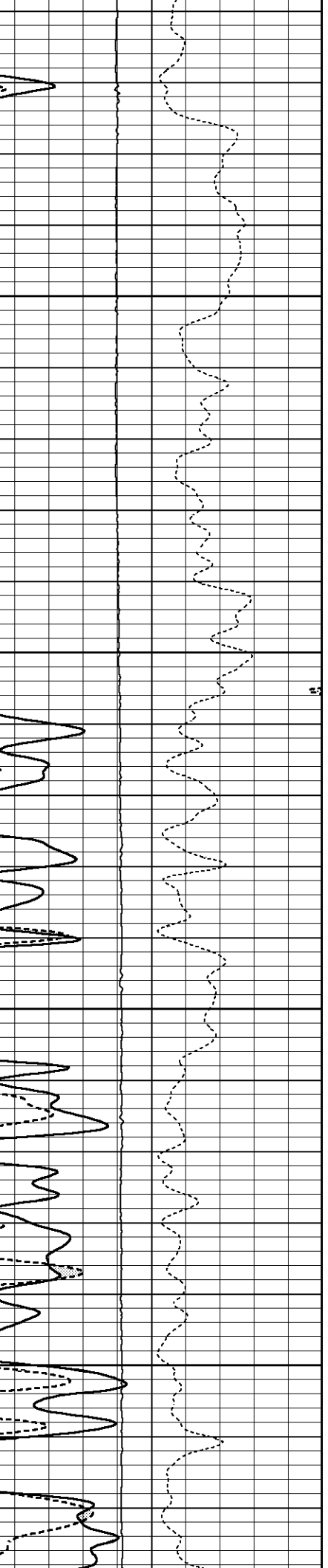
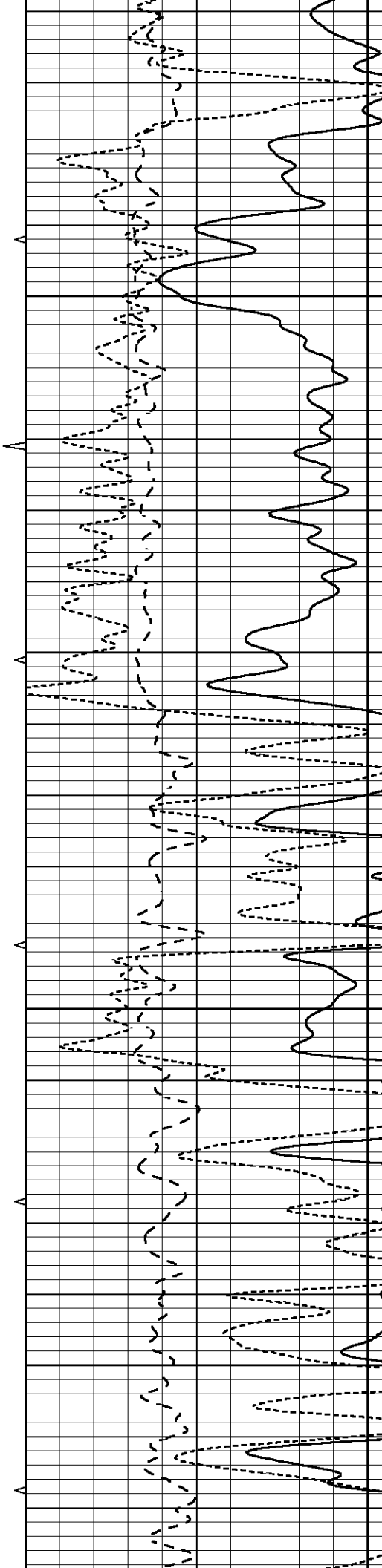


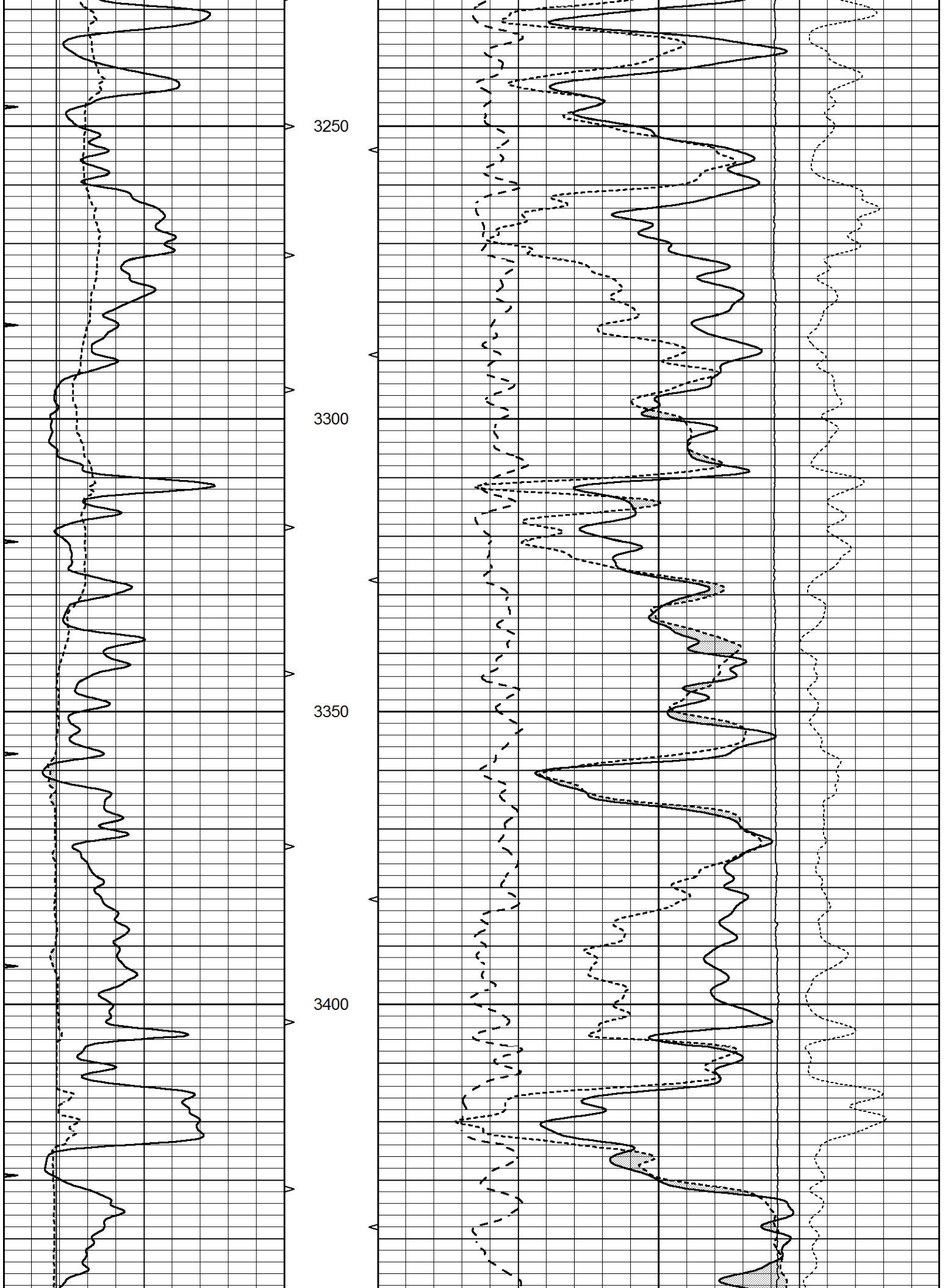
3050

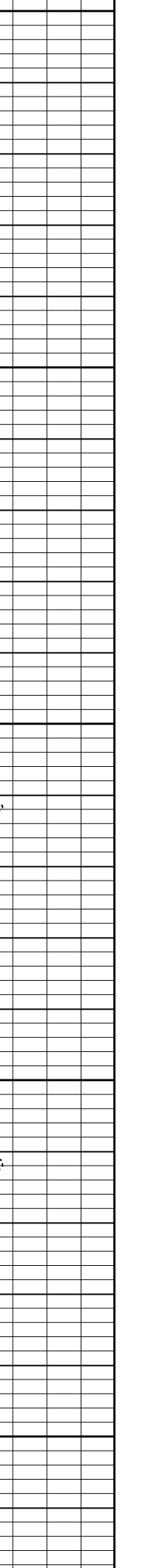
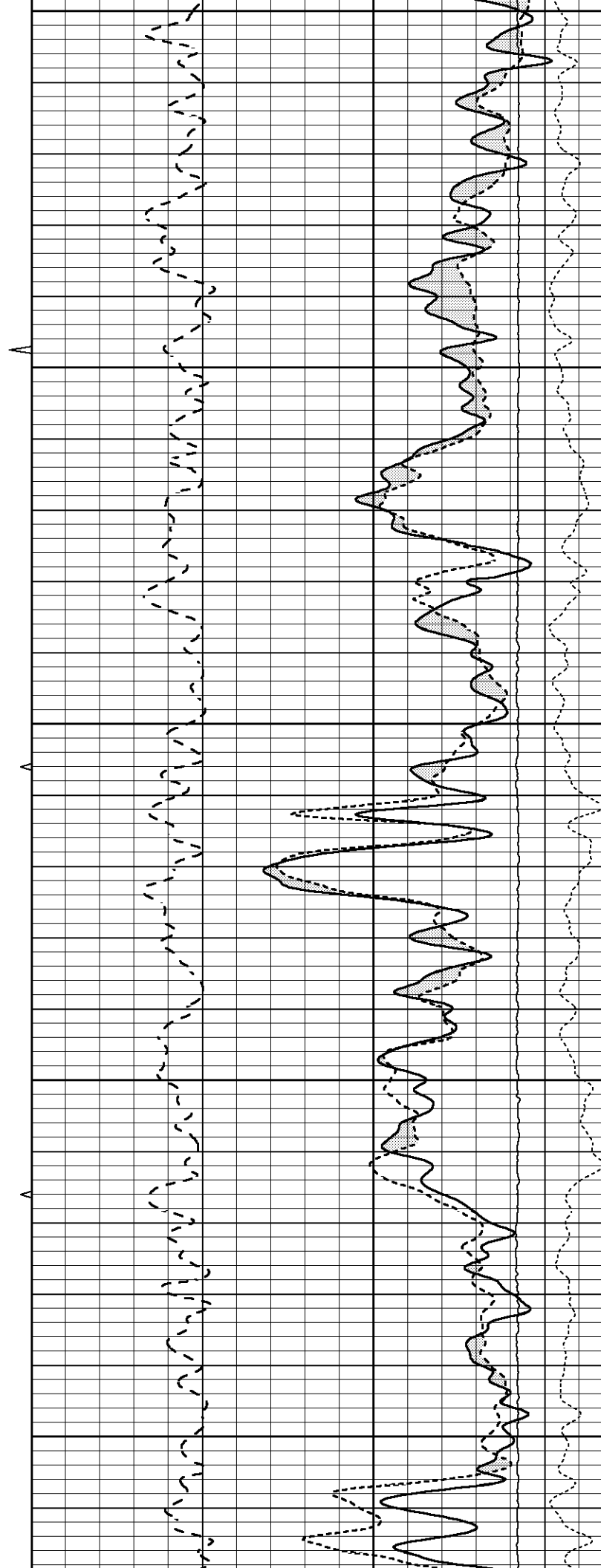
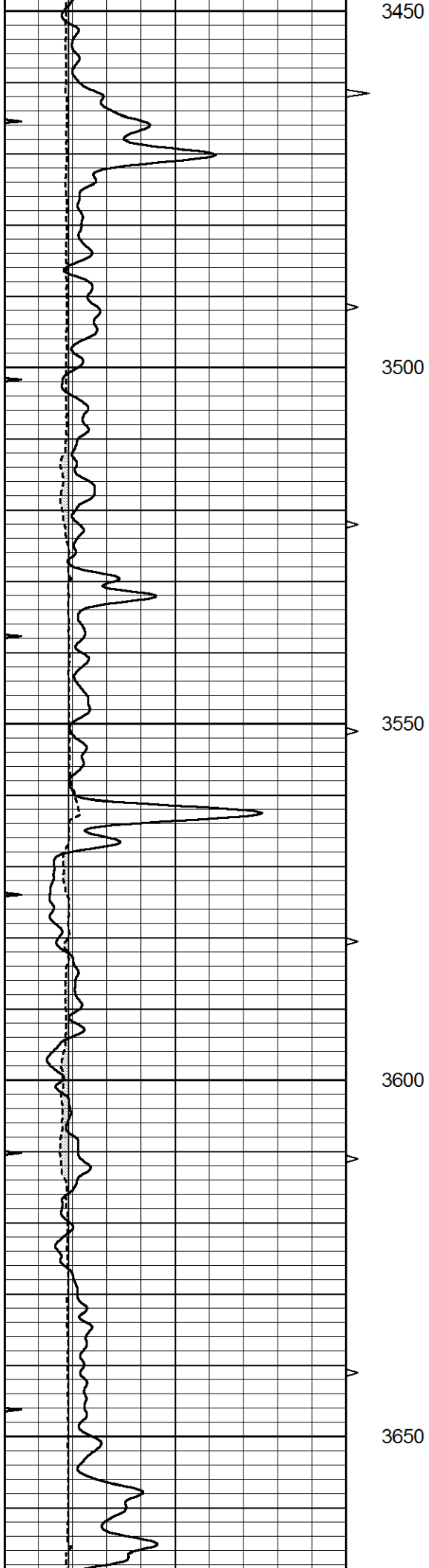
3100

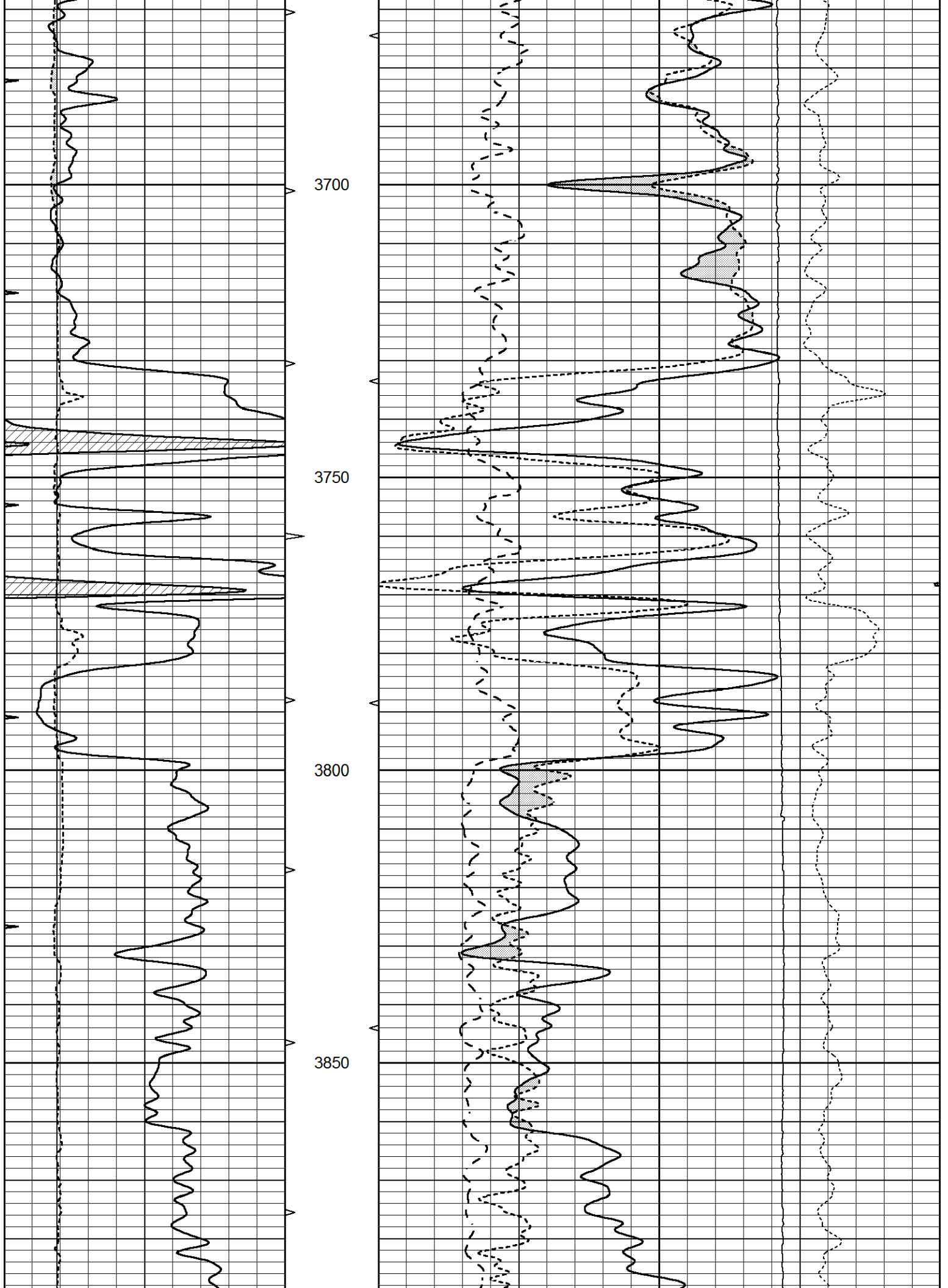
3150

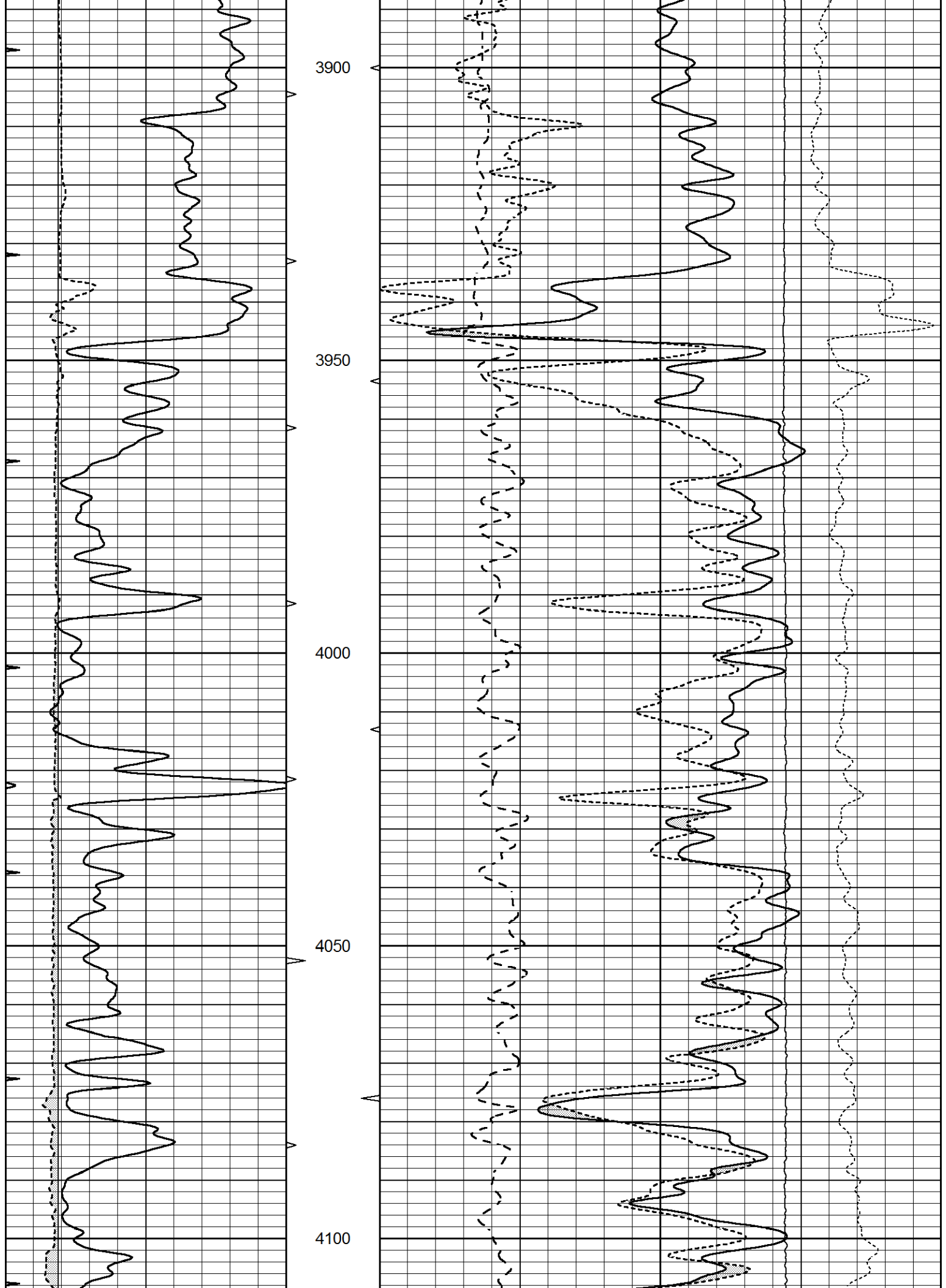
3200

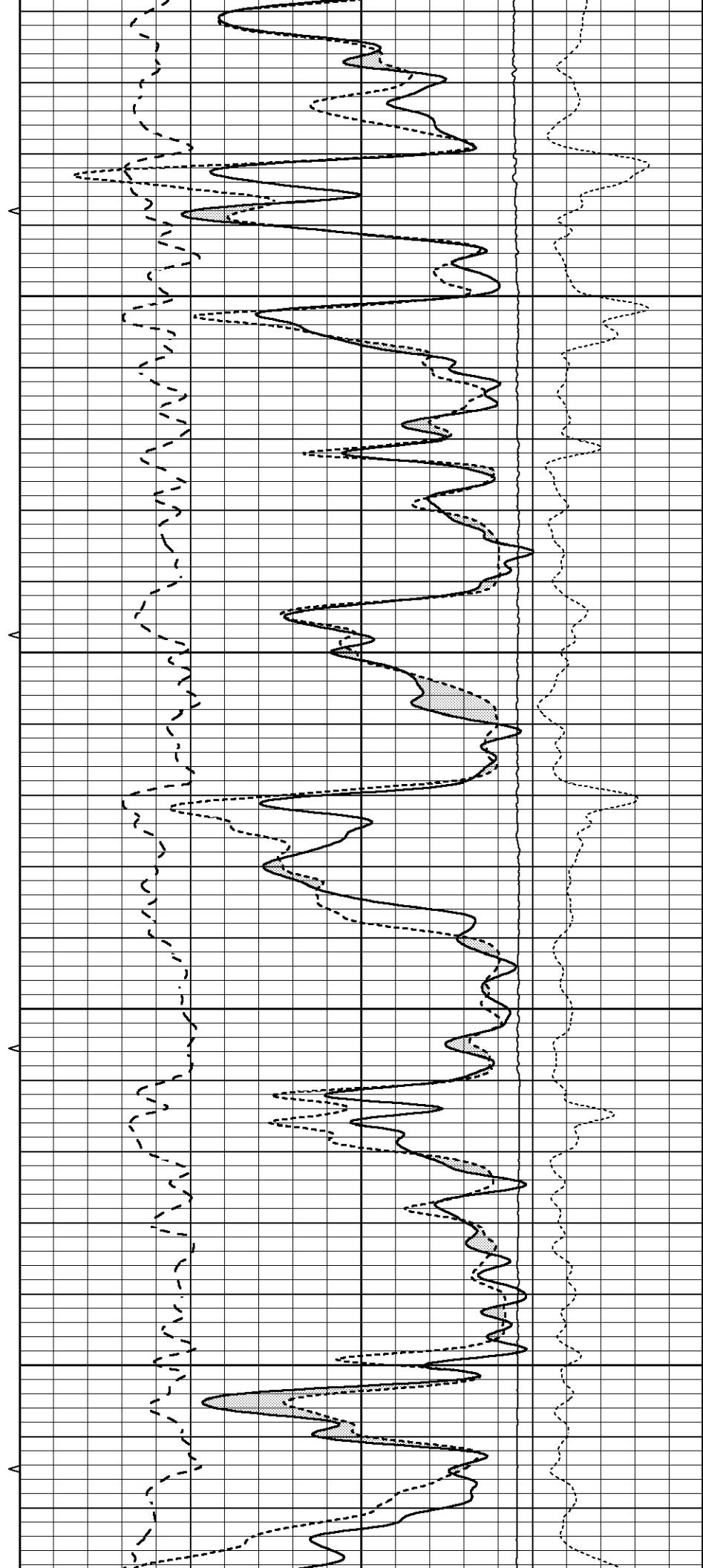
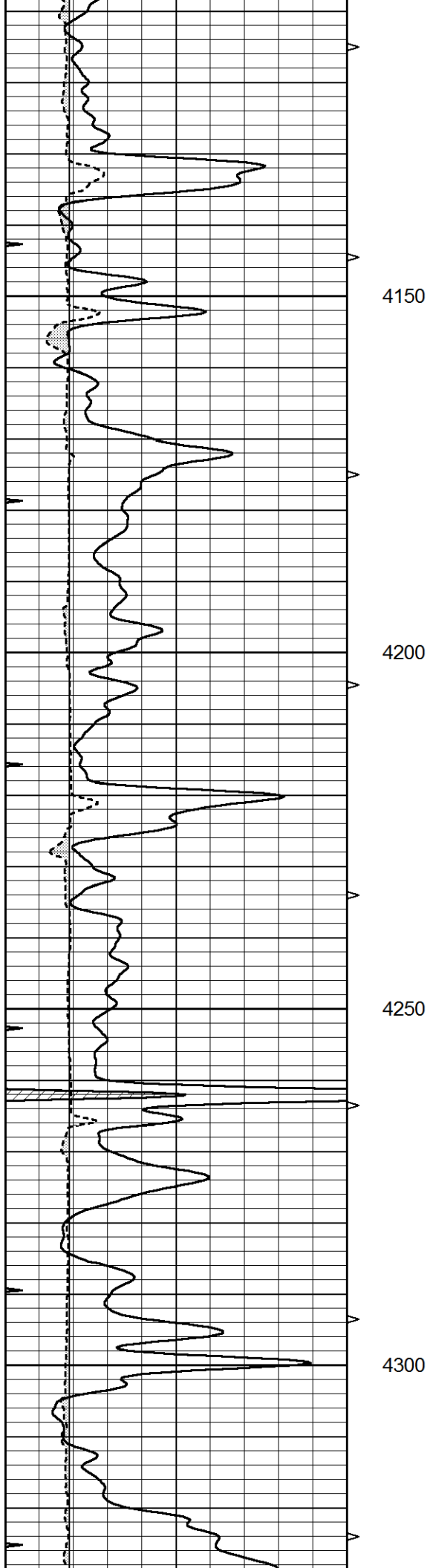


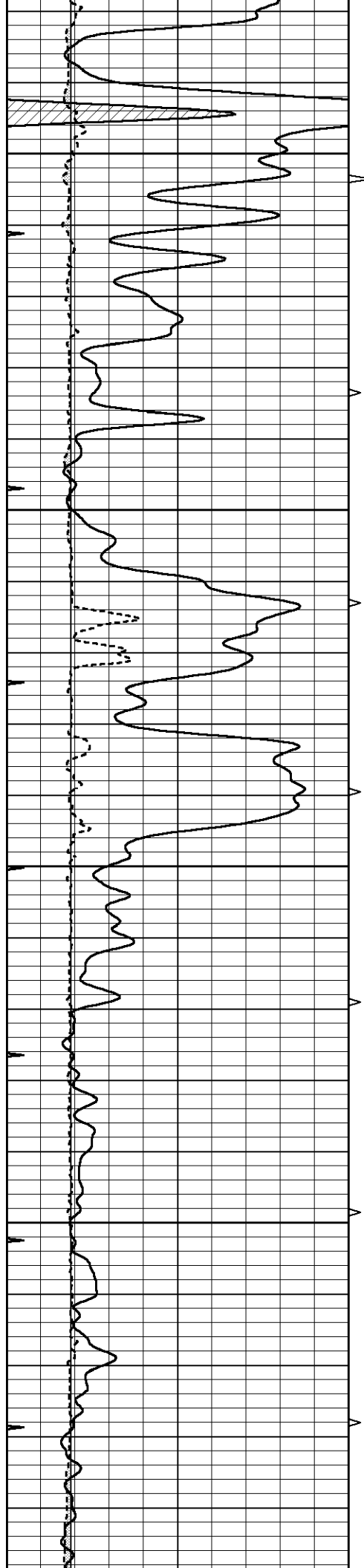










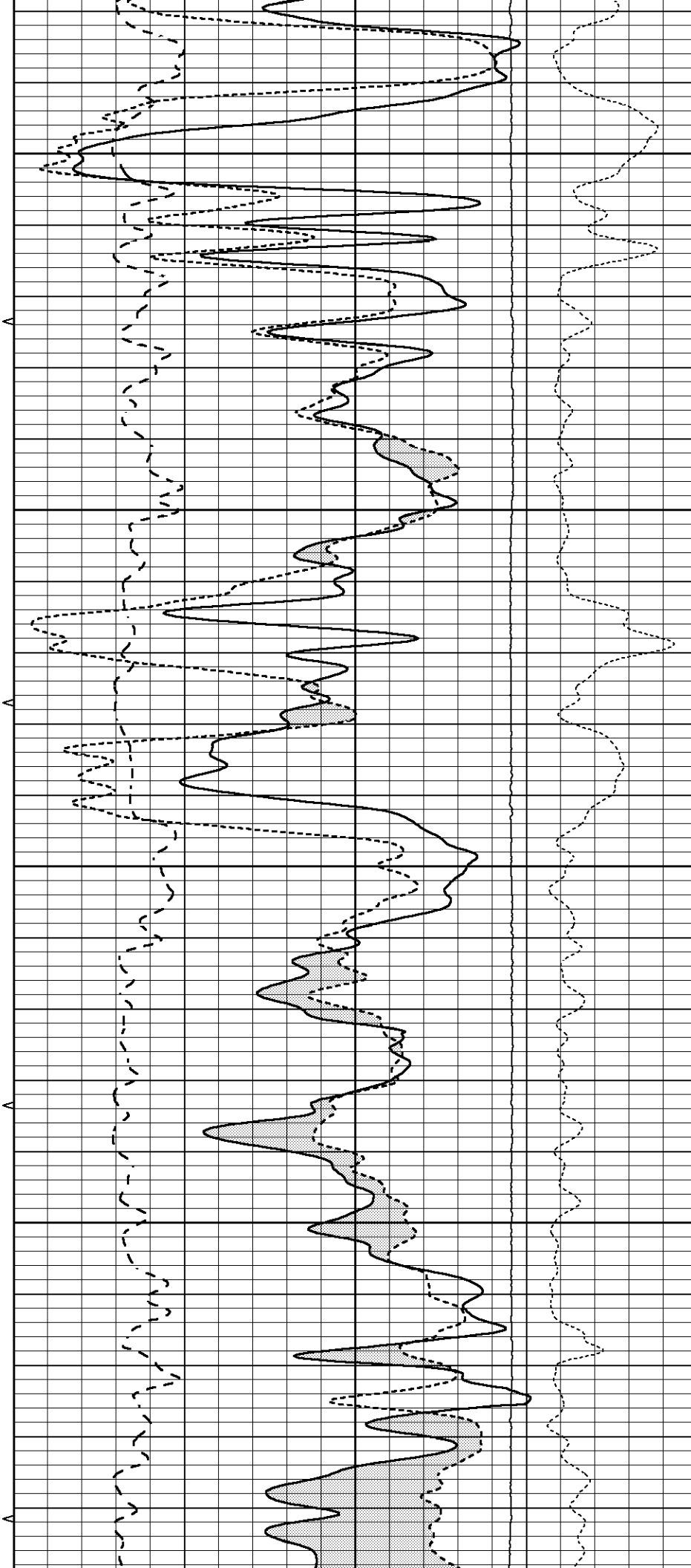


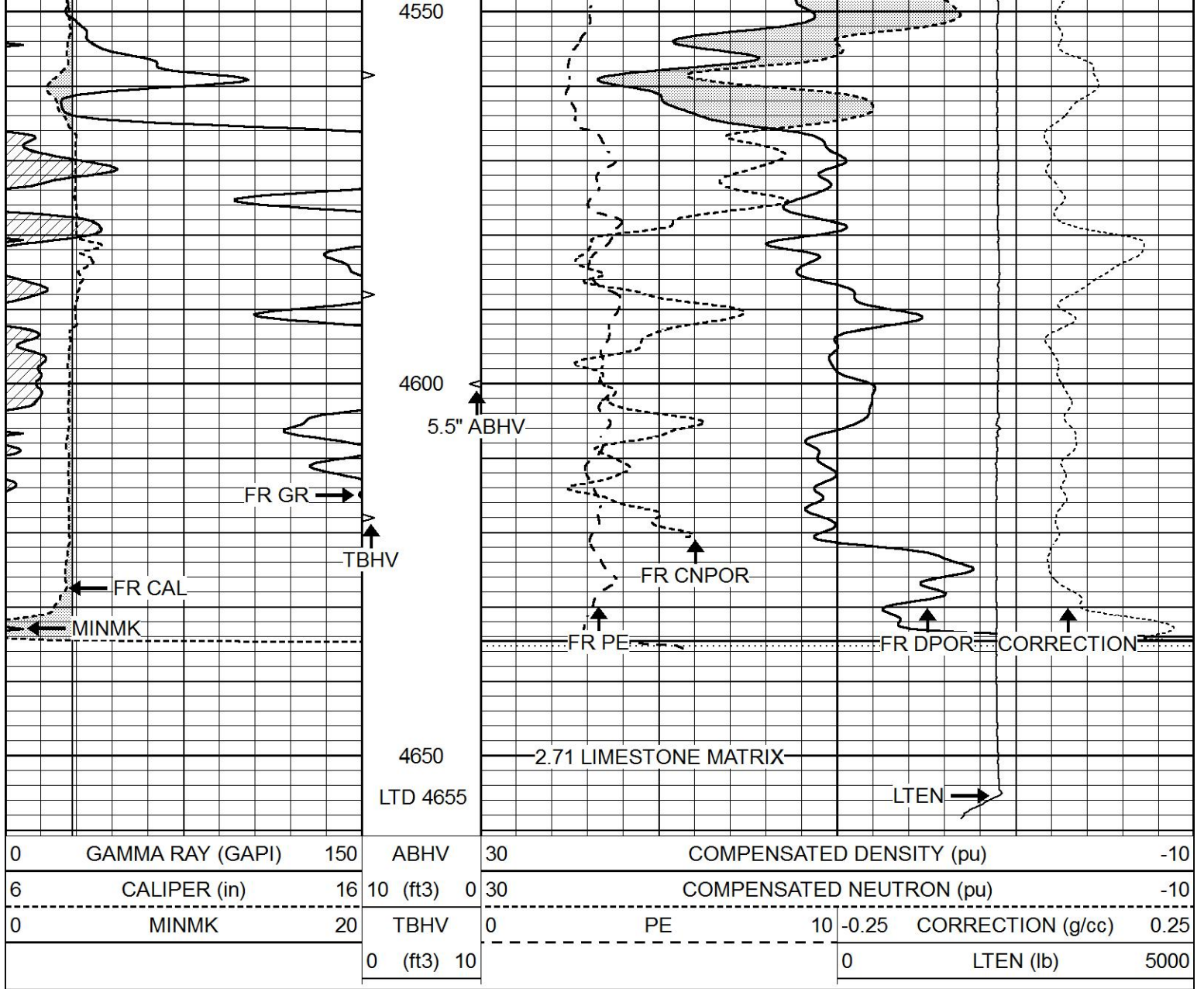
4350

4400

4450

4500

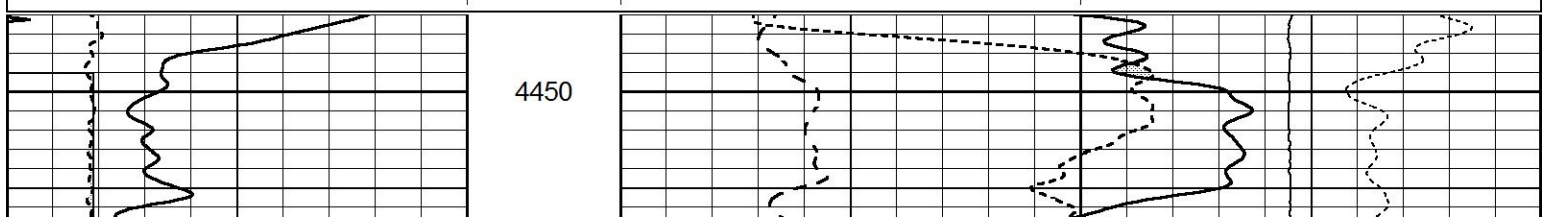


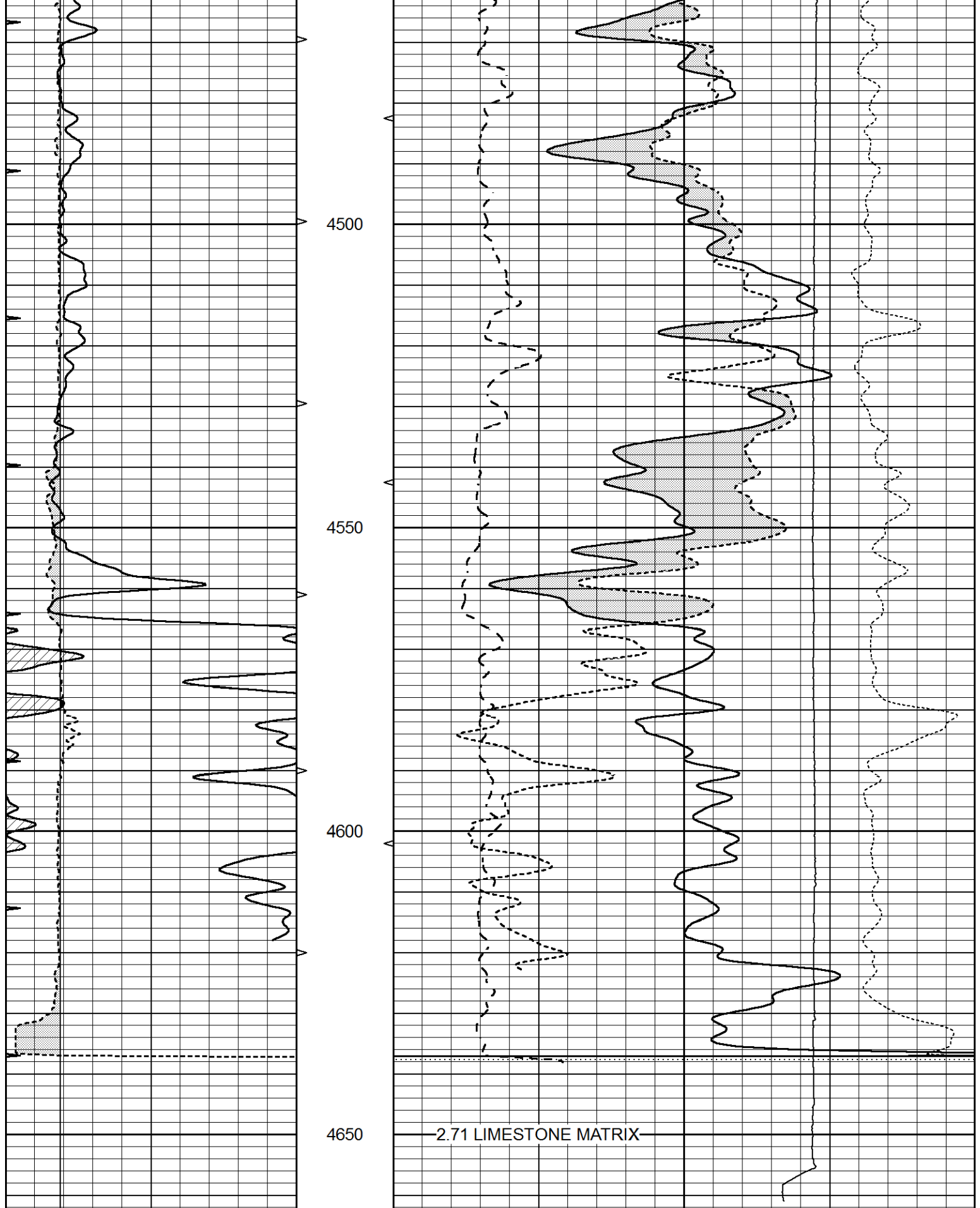


# LIMESTONE MATRIX REPEAT

Database File 9738pe.db  
 Dataset Pathname pass2.LSR  
 Presentation Format \_ldt\_neu  
 Dataset Creation Sun Nov 23 11:40:18 2025  
 Charted by Depth in Feet scaled 1:240

0	GAMMA RAY (GAPI)	150	ABHV	30	COMPENSATED DENSITY (pu)	-10
6	CALIPER (in)	16	10 (ft3) 0	30	COMPENSATED NEUTRON (pu)	-10
0	MINMK	20	TBHV	0	PE	10 -0.25 CORRECTION (g/cc) 0.25
			0 (ft3) 10		0	LTEN (lb) 5000





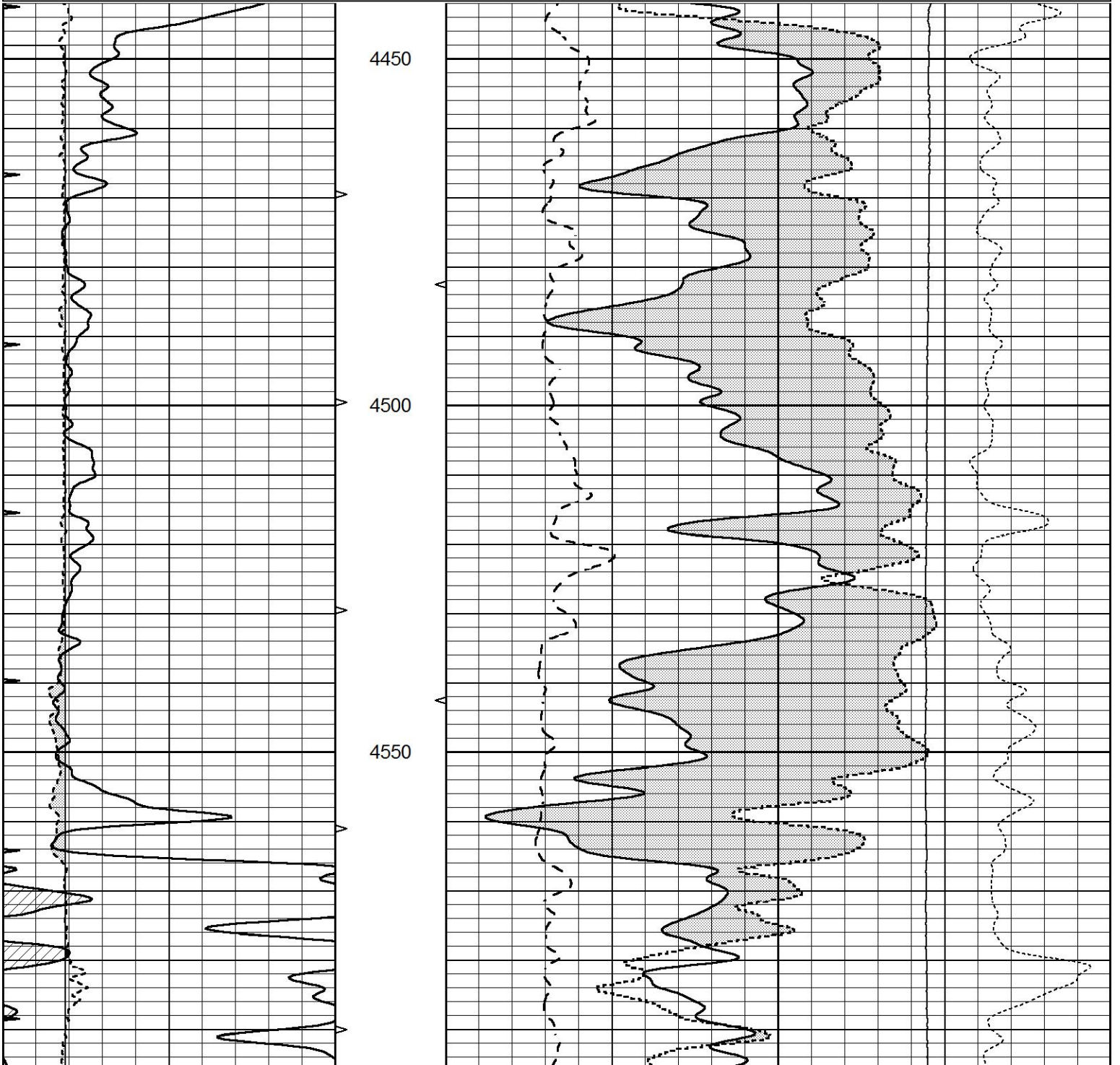
0	GAMMA RAY (GAPI)	150	ABHV	30	COMPENSATED DENSITY (pu)	-10
6	CALIPER (in)	16	10 (ft3)	0 30	COMPENSATED NEUTRON (pu)	-10
0	MINMK	20	TBHV	0	PE	10 -0.25
			0 (ft3)	10		CORRECTION (g/cc)
						0
						LTEN (lb)
						5000

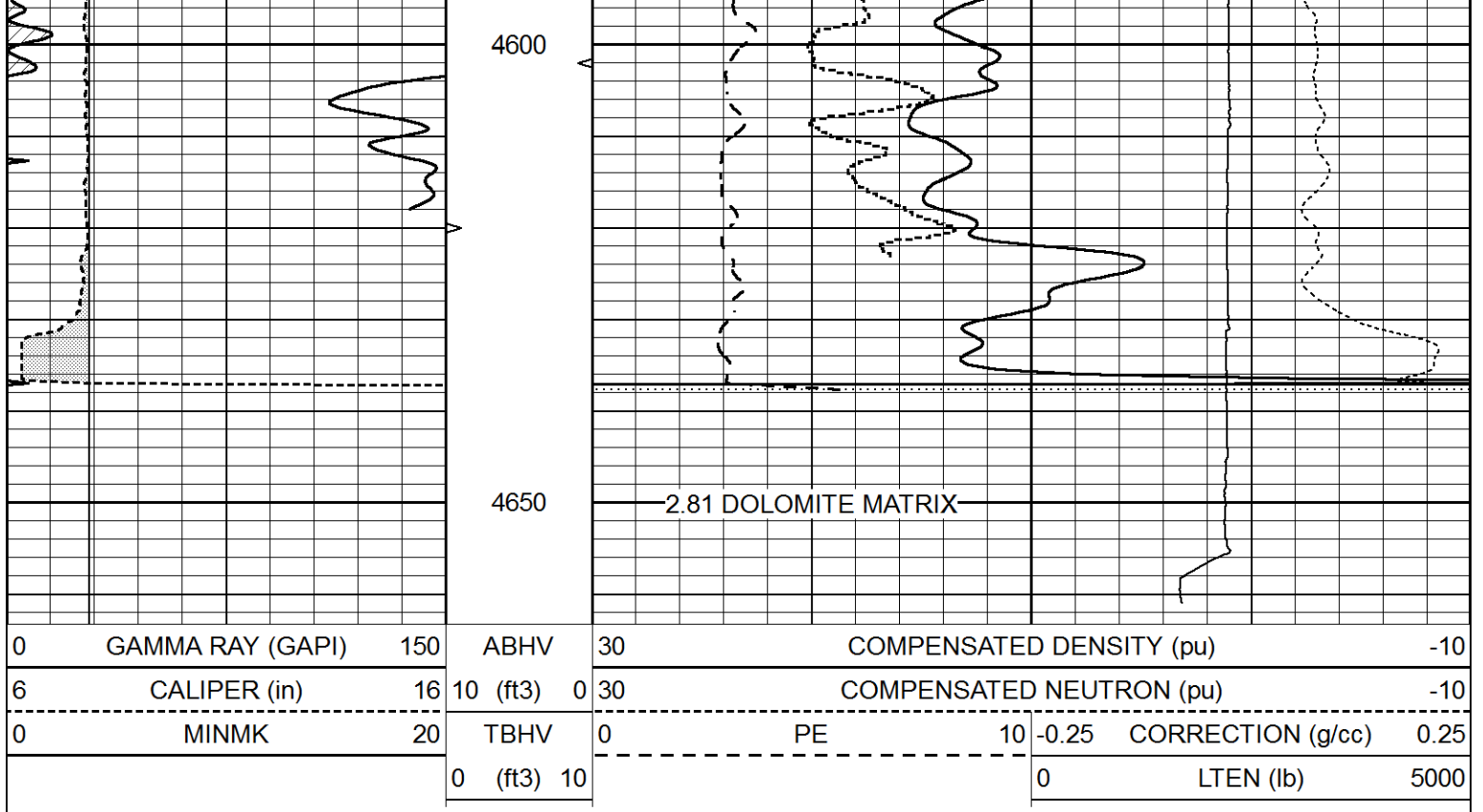


# DOLOMITE MATRIX REPEAT

Database File 9738pe.db  
 Dataset Pathname pass2.DLR  
 Presentation Format \_ldt\_neu  
 Dataset Creation Sun Nov 23 11:42:24 2025  
 Charted by Depth in Feet scaled 1:240

0	GAMMA RAY (GAPI)	150	ABHV	30	COMPENSATED DENSITY (pu)		-10
6	CALIPER (in)	16	10 (ft3)	0	COMPENSATED NEUTRON (pu)		-10
0	MINMK	20	TBHV	0	PE	10	-0.25 CORRECTION (g/cc) 0.25
			0 (ft3)	10		0	LTEN (lb) 5000





### Calibration Report

Database File 9738pe.db  
 Dataset Pathname pass2.LSR  
 Dataset Creation Sun Nov 23 11:40:18 2025

### Dual Induction Calibration Report

Serial-Model: FW1410-56-Probe  
 Surface Cal Performed: Thu Sep 25 23:02:35 2025  
 Downhole Cal Performed: Tue Jul 25 12:15:37 2017  
 After Survey Verification Performed: Tue Jul 25 12:15:38 2017

#### Surface Calibration

Loop:	Readings			References			Results	
	Air	Loop		Air	Loop		m	b
Deep	0.008	0.765	V	1.000	400.000	mmho/m	520.000	17.000
Medium	-0.056	0.761	V	1.000	464.000	mmho/m	540.000	204.000
Internal:	Zero	Cal		Zero	Cal		m	b
Deep	0.005	0.624	V	0.000	400.000	mmho/m	645.611	-3.034
Medium	0.012	0.721	V	0.000	464.000	mmho/m	653.591	-7.532

#### Downhole Calibration

	Readings			References			Results	
	Zero	Cal		Zero	Cal		m'	b'
Deep	-0.647	301.329	mmho/m	-0.780	336.378	mmho/m	1.117	-0.058
Medium	38.256	411.013	mmho/m	39.046	441.706	mmho/m	1.080	-2.280
LL3		7.471	V		2500.000	Ohm-m		
		0.001	V		20.000	Ohm-m		
		-7.085	V		4000.000	mmho-m		

#### After Survey Verification

Readings	Targets	Results
----------	---------	---------

	Zero	Cal		Zero	Cal		m'	b'
Deep	0.000	0.000	mmho/m	-0.647	301.329	mmho/m	1.000	0.000
Medium	0.000	0.000	mmho/m	38.256	411.013	mmho/m	1.000	0.000
LL3		0.000	Ohm-m		1500.000	Ohm-m		
		0.000	Ohm-m		20.000	Ohm-m		
		0.000	mmho-m		3745.000	mmho-m		

Litho Density Calibration Report  
Serial: 003 Model: PRB

Master Calibration

Performed Fri Aug 01 11:20:40 2025

	Background	Magnesium	Aluminum	Aluminum+Fe	
Window 1	1424.0	7274.5	2614.8	2400.8	cps
Window 2	1319.8	6538.4	2382.0	2203.6	cps
Window 3	1217.6	5121.1	2012.2	1909.9	cps
Window 4	332.0	333.7	334.9	328.8	cps
Long Space	0.0	5218.6	1062.2	883.8	cps
Short Space	1.8	2242.5	1399.2	1191.8	cps
Rho		1.7100	2.5900	0.0000	g/cc
Pe		2.0000	2.7500	5.7900	
Rib Angle	: 43.5	Rib Slope	: 0.949	Density/Spine Ratio	: 0.530
Spine Angle	: 73.5	Spine Slope	: 3.375	Spine Intercept	: -17.5

Before Survey Verification

Performed Wed Dec 31 18:00:00 1969

Window 1	0.0	0.0	0.0	0.0	cps
Window 2	0.0	0.0	0.0	0.0	cps
Window 3	0.0	0.0	0.0	0.0	cps
Window 4	0.0	0.0	0.0	0.0	cps
Long Space	0.0	0.0	0.0	0.0	cps
Short Space	0.0	0.0	0.0	0.0	cps
Measured Rho		0.0000	0.0000	0.0000	g/cc
Measured Correction		0.0000	0.0000	0.0000	g/cc
Measured Pe			0.0000	0.0000	

After Survey Verification

Performed Wed Dec 31 18:00:00 1969

Window 1	0.0	0.0	0.0	0.0	cps
Window 2	0.0	0.0	0.0	0.0	cps
Window 3	0.0	0.0	0.0	0.0	cps
Window 4	0.0	0.0	0.0	0.0	cps
Long Space	0.0	0.0	0.0	0.0	cps
Short Space	0.0	0.0	0.0	0.0	cps
Measured Rho		0.0000	0.0000	0.0000	g/cc
Measured Correction		0.0000	0.0000	0.0000	g/cc
Measured Pe			0.0000	0.0000	

Compensated Neutron Calibration Report

Serial Number: 080621PMC  
Tool Model: NABORS

PRE-SURVEY VERIFICATION

Detector	Readings	Measured	Target
----------	----------	----------	--------

Short Space  
Long Space

cps  
cps

pu

pu

POST-SURVEY VERIFICATION

Detector

Readings

Measured

Target

Short Space  
Long Space

cps  
cps

pu

pu

Gamma Ray Calibration Report

Serial Number:  
Tool Model:  
Performed:

46001  
Probe1  
Thu Apr 20 09:55:57 2023

Calibrator Value:

1.0                      GAPI

Background Reading:  
Calibrator Reading:

0.0                      cps  
1.0                      cps

Sensitivity:

0.4300                      GAPI/cps