



DUAL INDUCTION LOG

Company PRATER OIL & GAS OPERATIONS, INC.
 Well KERR UNIT #1-23
 Field COATS WEST
 County PRATT
 State KANSAS

Company PRATER OIL & GAS OPERATIONS, INC.
 Well KERR UNIT #1-23
 Field COATS WEST
 County PRATT State KANSAS

Location: API #: 15-151-22617-0000
 2465 FNL & 1505 FEL
 SE - SE - SW - NE
 SEC 23 TWP 29S RGE 14W
 Permanent Datum GROUND LEVEL Elevation 1942
 Log Measured From KELLY BUSHING 11' A.G.L.
 Drilling Measured From KELLY BUSHING
 Other Services
 CDL/CNL/PE
 MEL/SON
 Elevation
 K.B. 1953
 D.F. 1951
 G.L. 1942

Date	11/23/25
Run Number	ONE
Depth Driller	4655
Depth Logger	4655
Bottom Logged Interval	4653
Top Log Interval	00
Casing Driller	8.625 @ 475
Casing Logger	475
Bit Size	7.875
Type Fluid in Hole	CHEMICAL MUD
Density / Viscosity	9.1/60
pH / Fluid Loss	10.5/8.8
Source of Sample	FLOWLINE
Rm @ Meas. Temp	1.05 @ 69F
Rmf @ Meas. Temp	.788 @ 69F
Rmc @ Meas. Temp	1.26 @ 69F
Source of Rmf / Rmc	MEASUREMENT
Rm @ BHT	.594 @ 122F
Time Circulation Stopped	2 HOURS
Time Logger on Bottom	10:00 A.M.
Maximum Recorded Temperature	122F
Equipment Number	3802
Location	HAYS, KANSAS
Recorded By	COLE ROBBEN
Witnessed By	SCOTT ALBERG
	TJ DREILING

<<< Fold Here >>>

All interpretations are opinions based on inferences from electrical or other measurements and we cannot and do not guarantee the accuracy or correctness of any interpretation, and we shall not, except in the case of gross or willful negligence on our part, be liable or responsible for any loss, costs, damages, or expenses incurred or sustained by anyone resulting from any interpretation made by any of our officers, agents or employees. These interpretations are also subject to our general terms and conditions set out in our current Price Schedule.

Comments

THANK YOU FOR USING ELI WIRELINE SERVICES, HAYS, KS. (785) 628-6395

DIRECTIONS:
 FROM COATS, KANSAS - 1 MILE EAST ON SW 90TH, SOUTH 1/2 MILE ON SW 40TH, WEST ON SW 95TH 3/8TH MILE, NORTH INTO

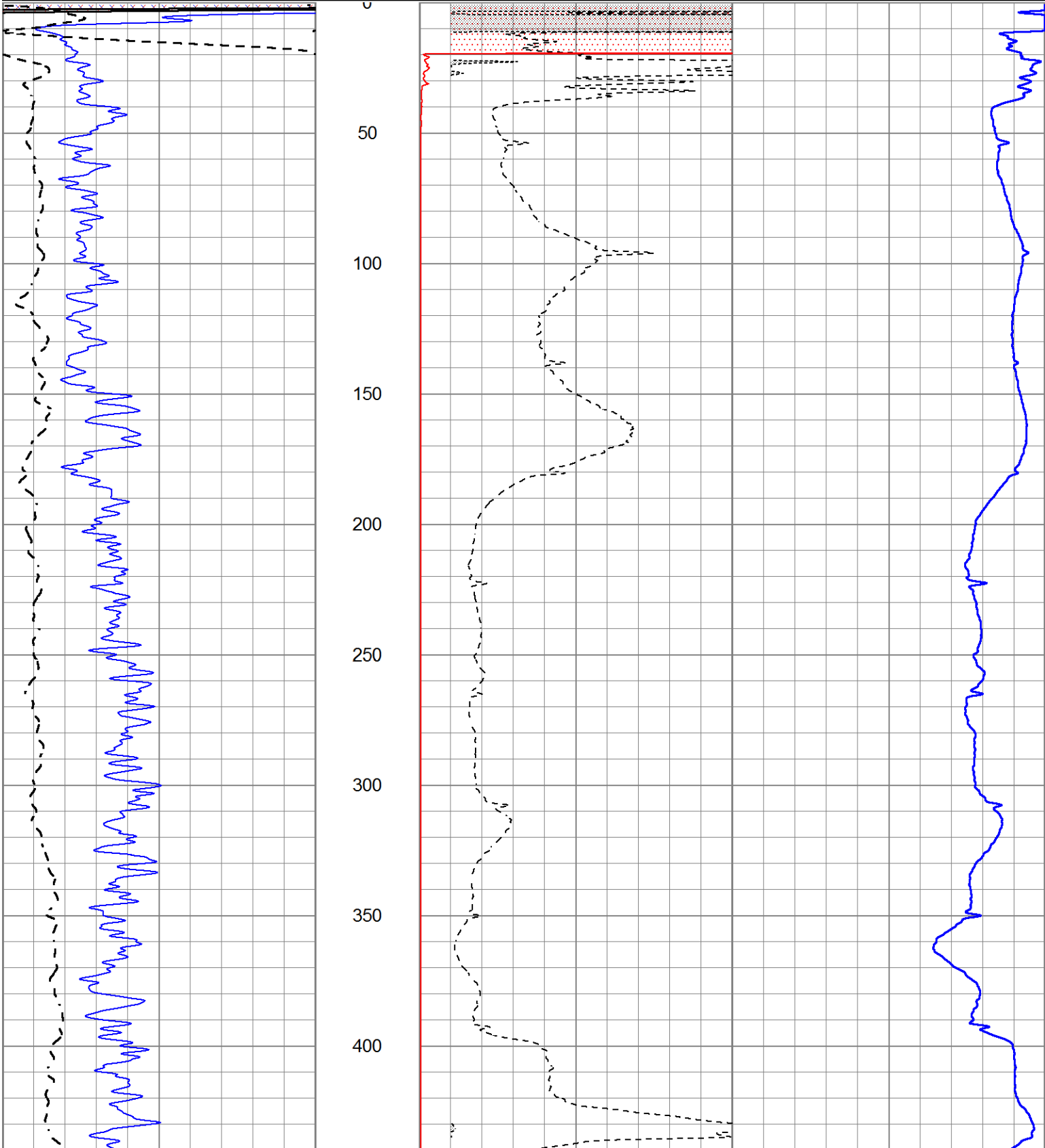


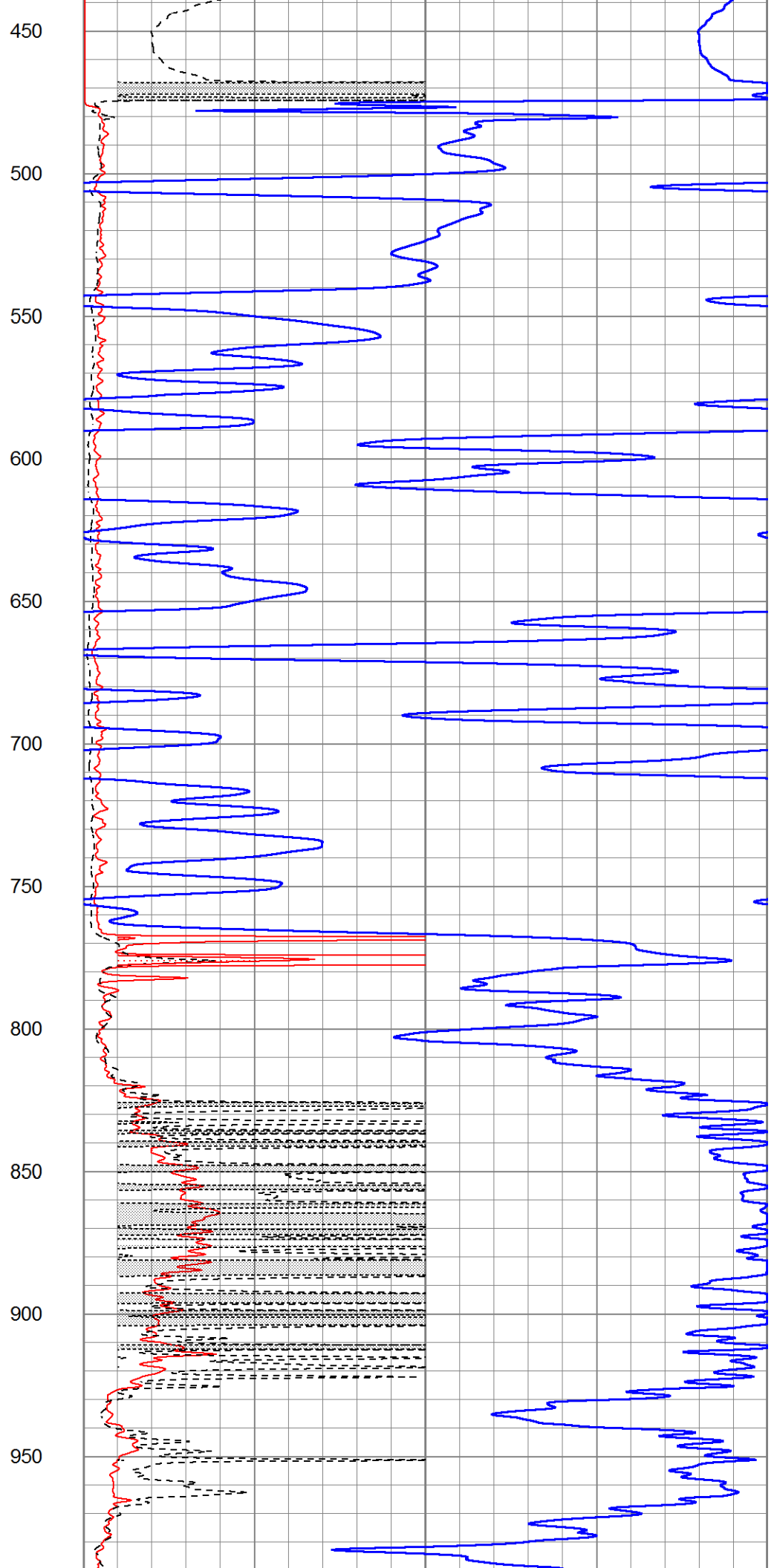
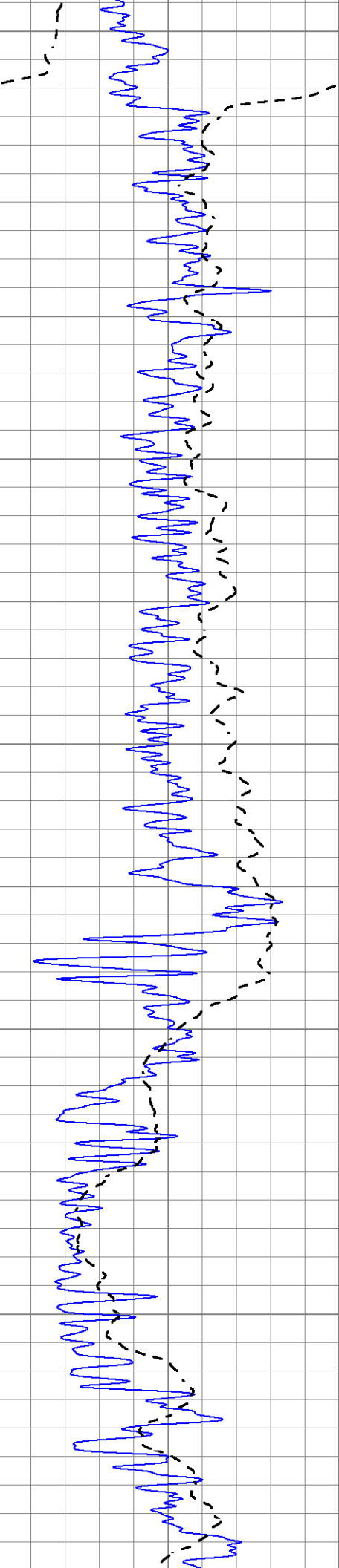
MAIN SECTION

Database File 9738pe.db
 Dataset Pathname pass3.TEST
 Presentation Format _dil2
 Dataset Creation Mon Nov 24 14:32:12 2025
 Charted by Depth in Feet scaled 1:600

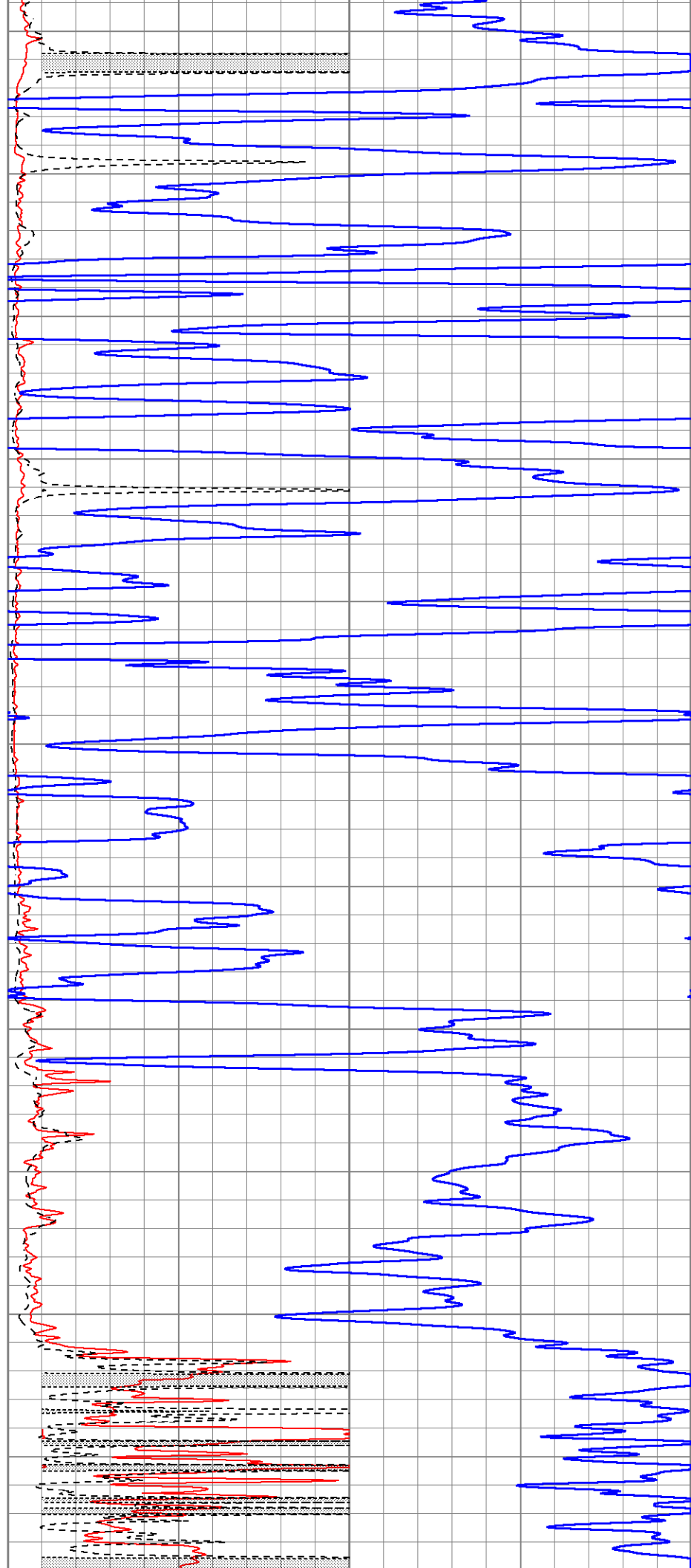
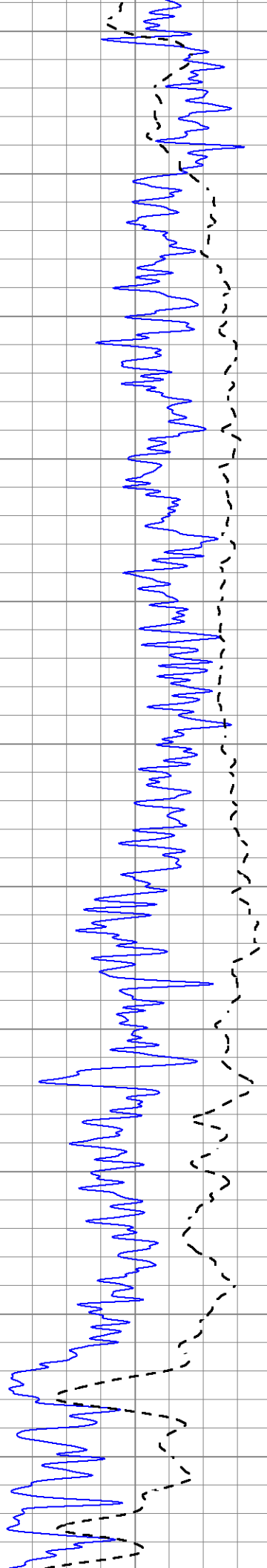
0	Gamma Ray (GAPI)	150
-100	SP (mV)	100

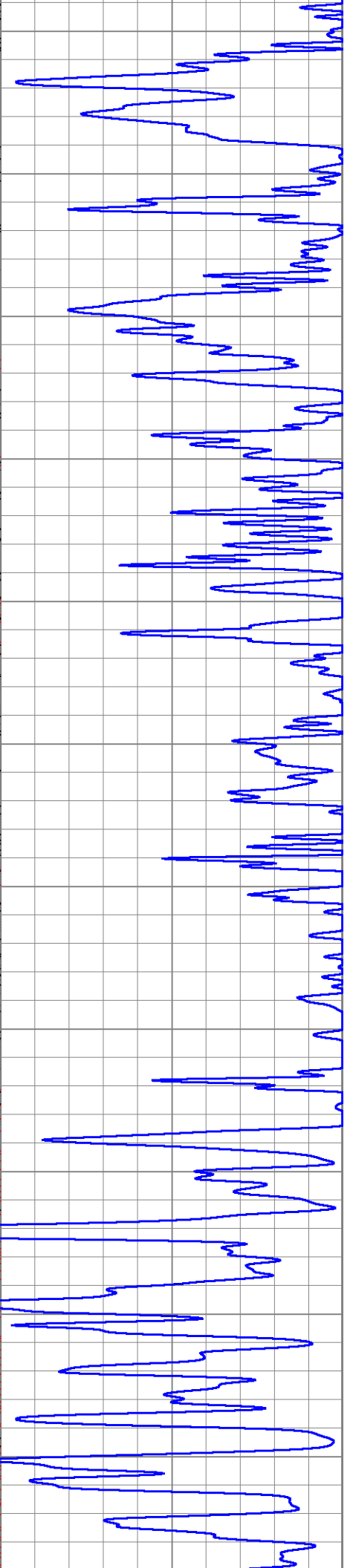
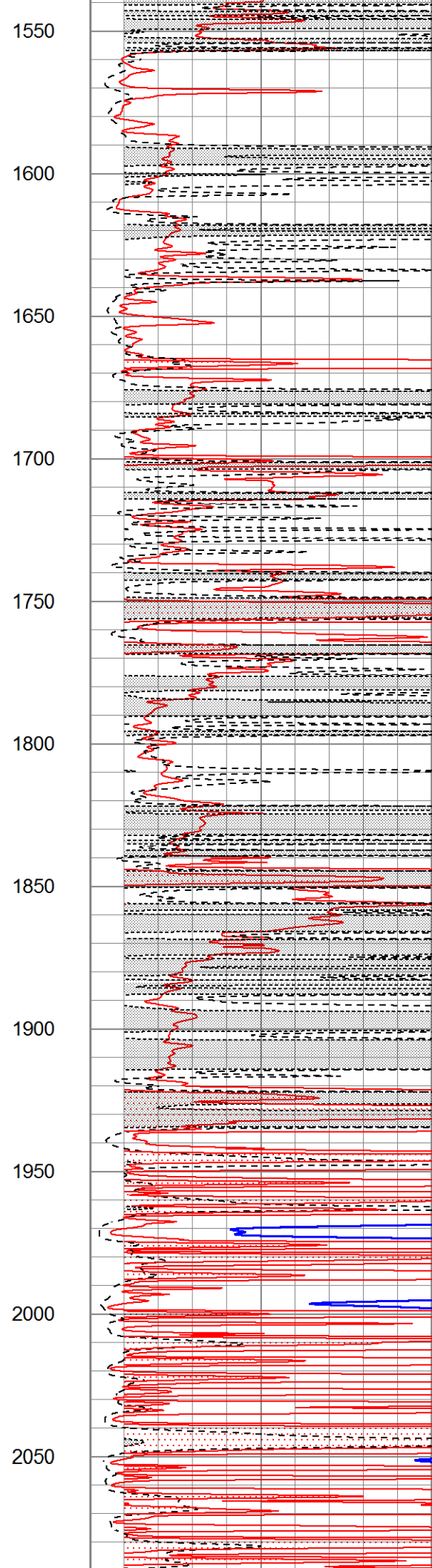
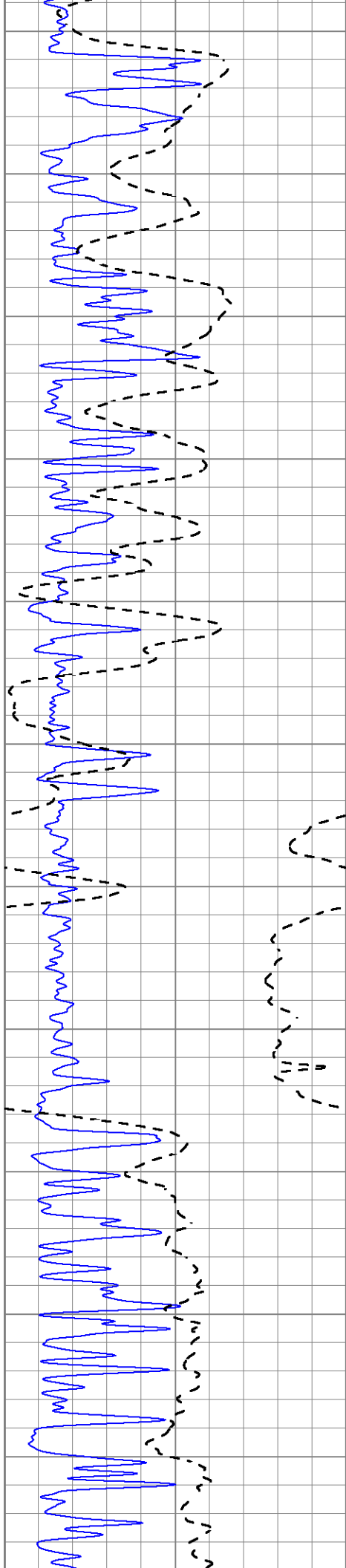
1000	CILD (mmho/m)	0
0	RLL3 (Ohm-m)	50
0	Deep Induction (Ohm-m)	50
50	RILD X10 (Ohm-m)	500
50	RLL3 X10 (Ohm-m)	500

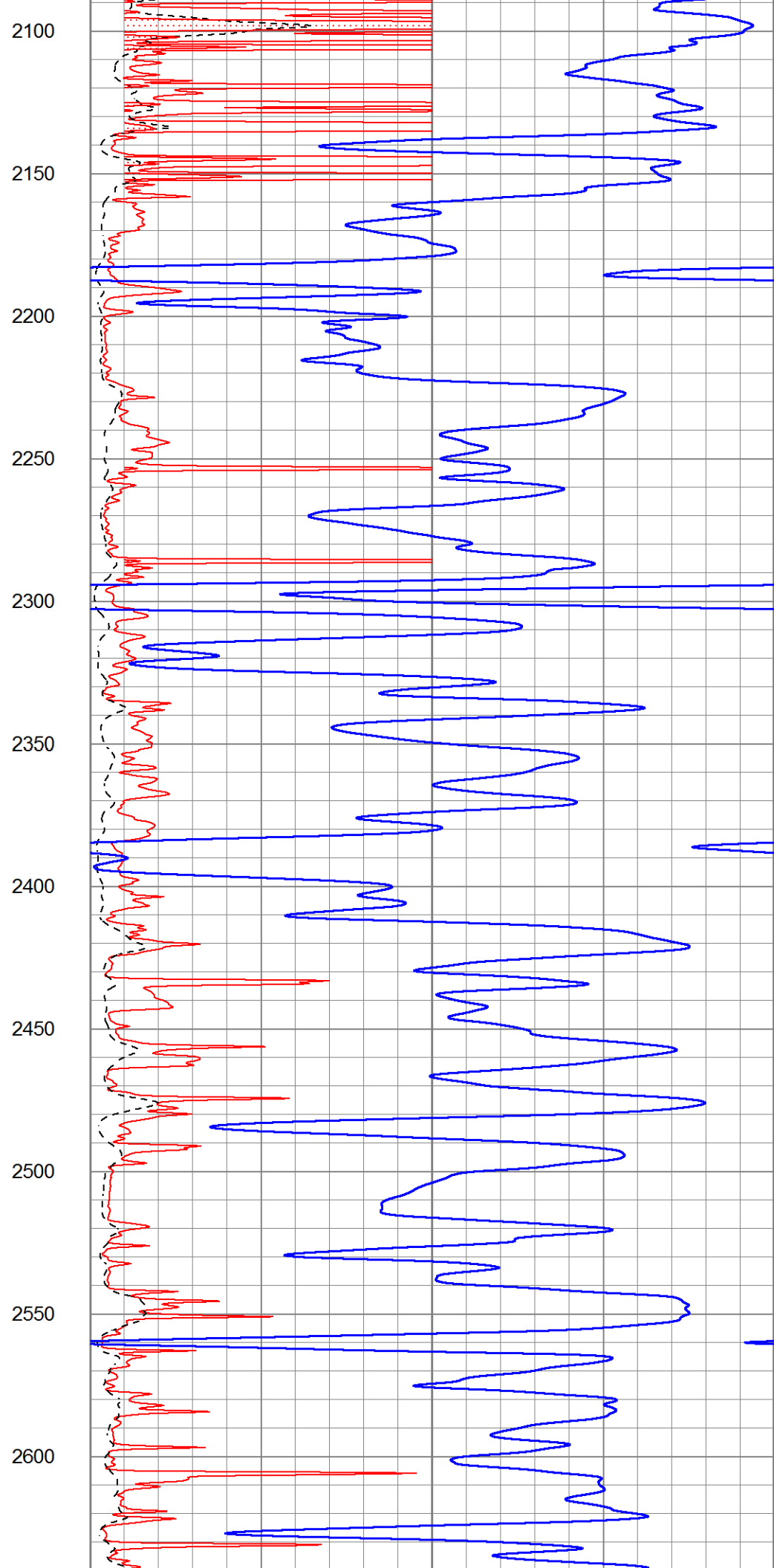
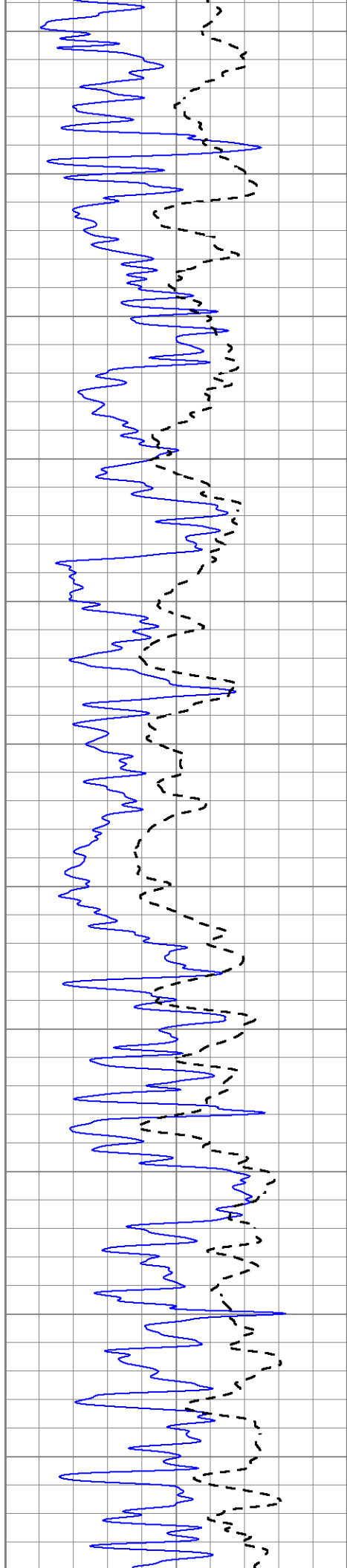


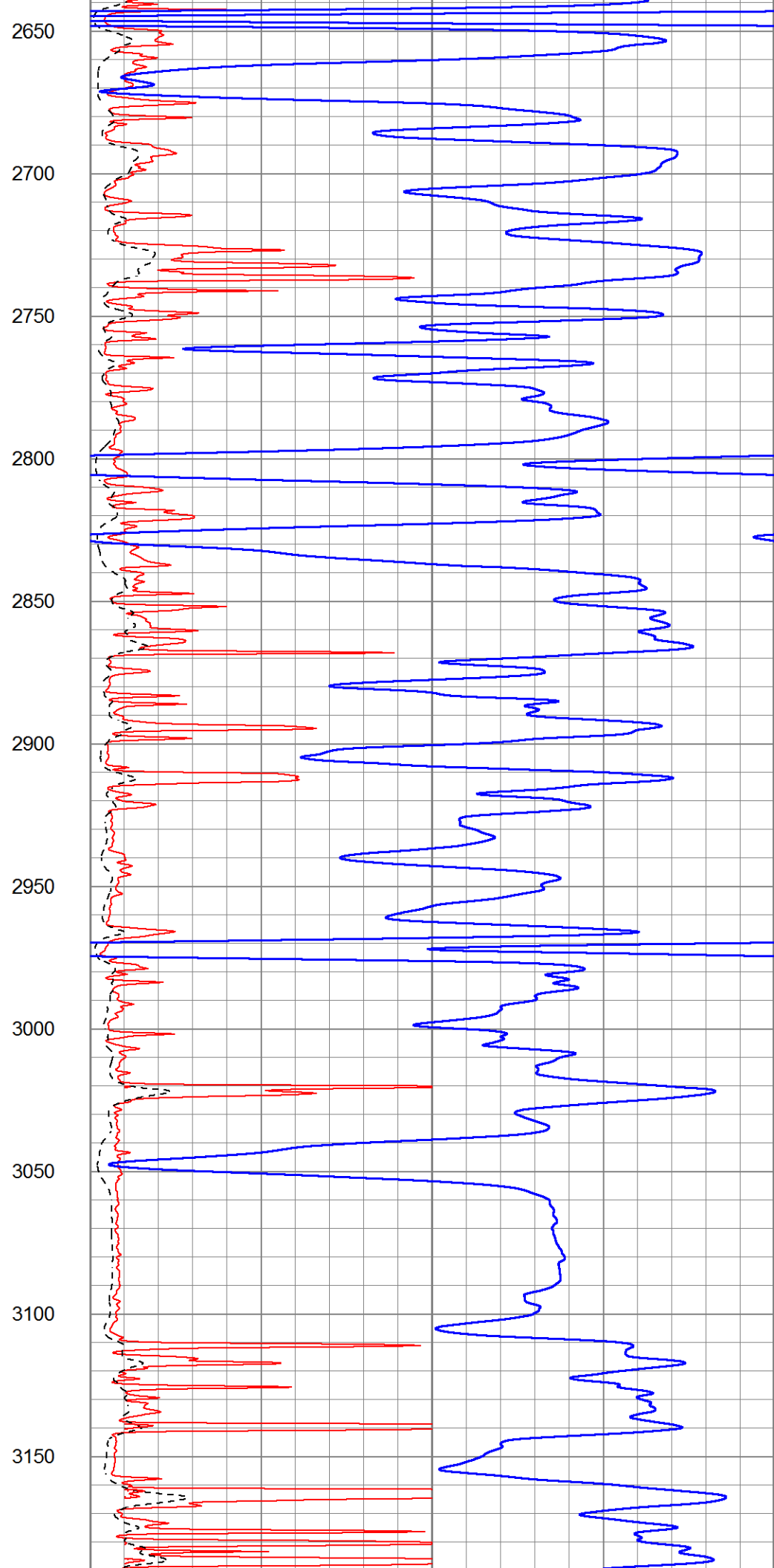
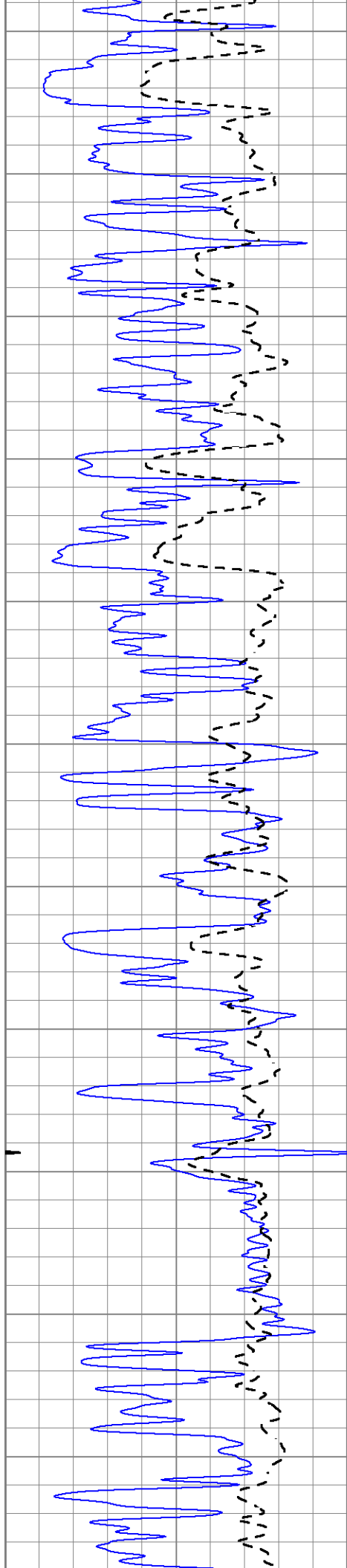


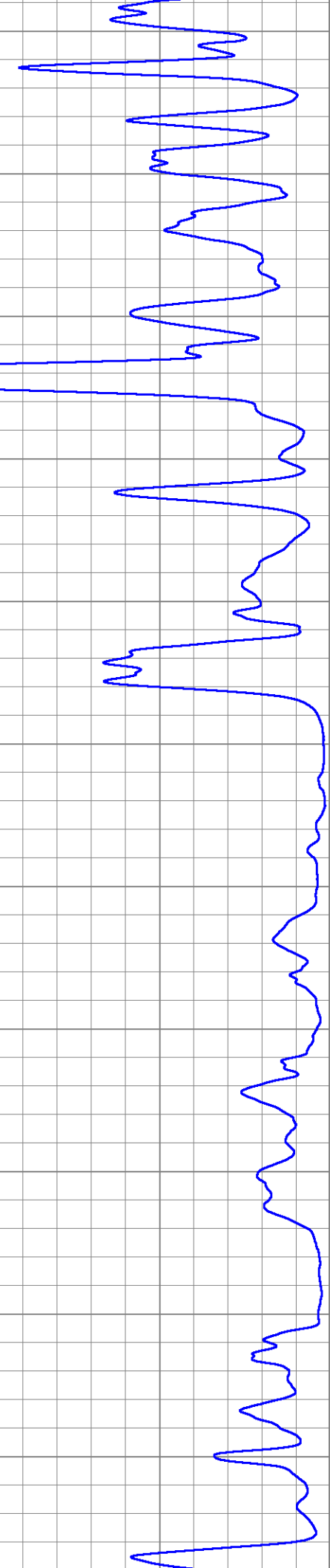
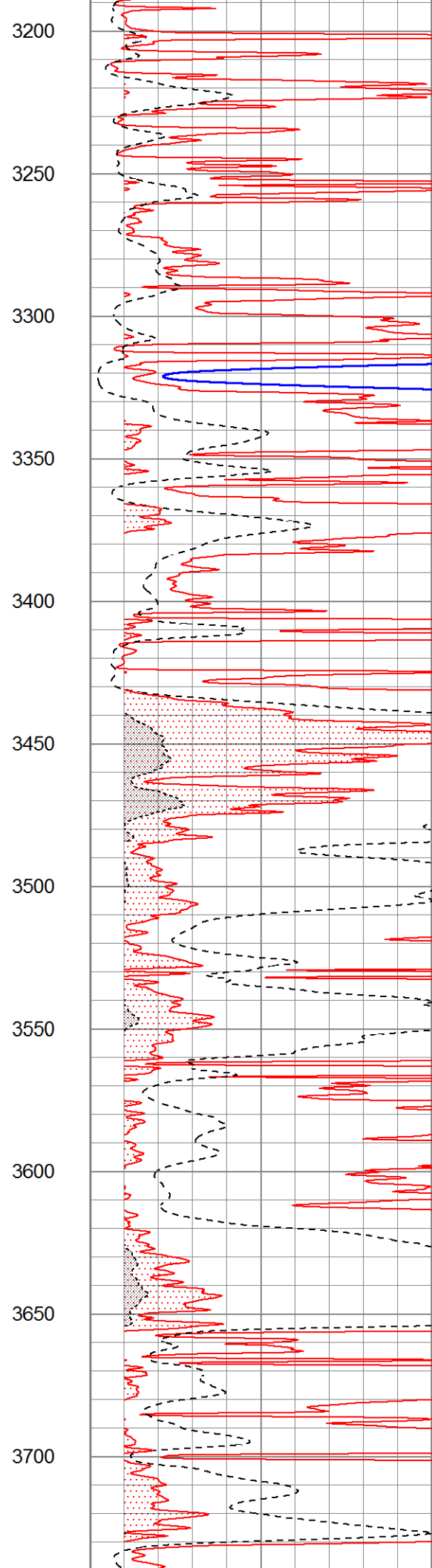
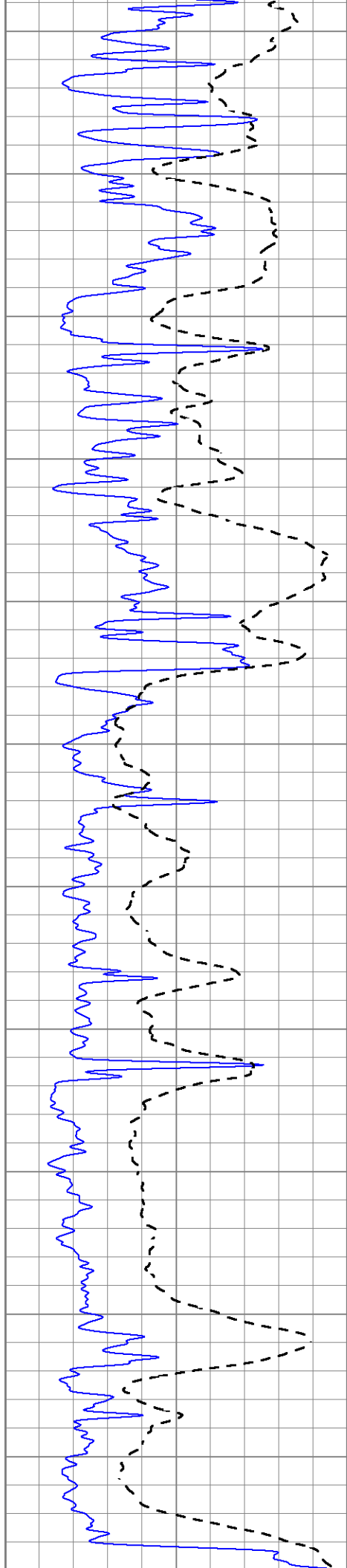
1000
1050
1100
1150
1200
1250
1300
1350
1400
1450
1500

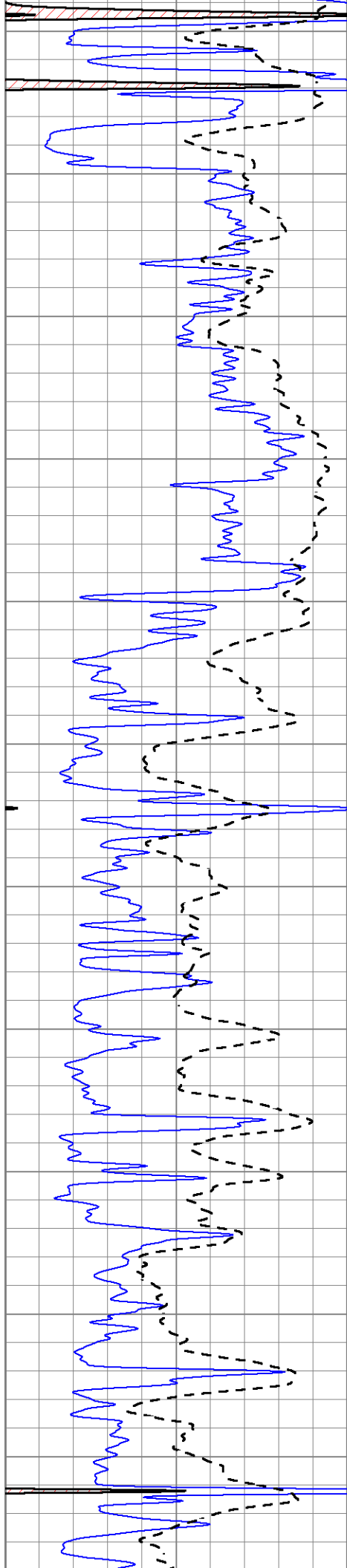




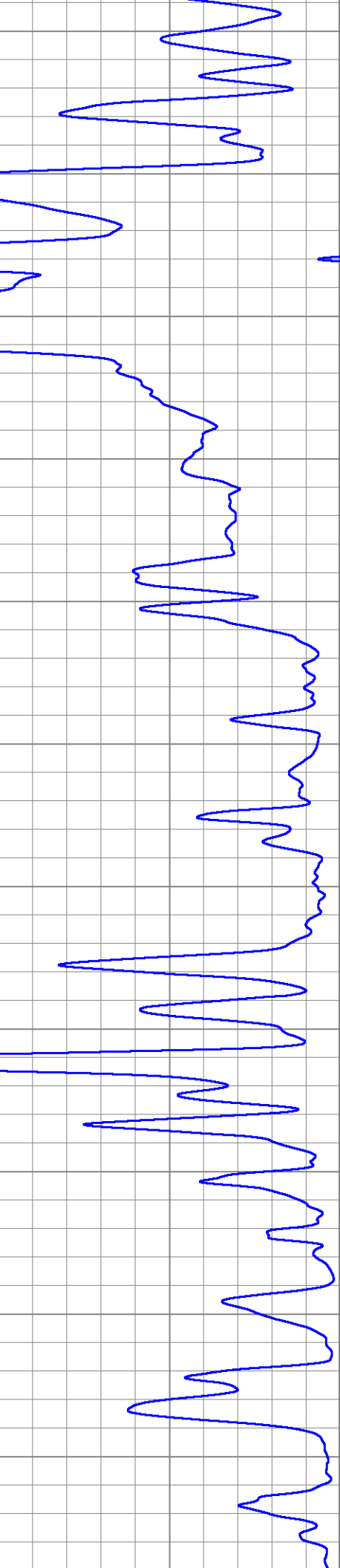
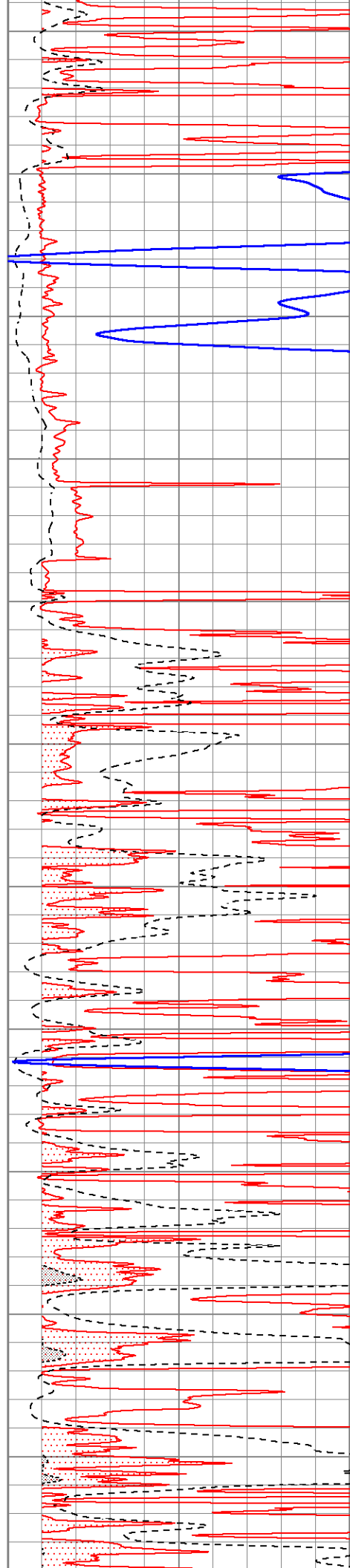


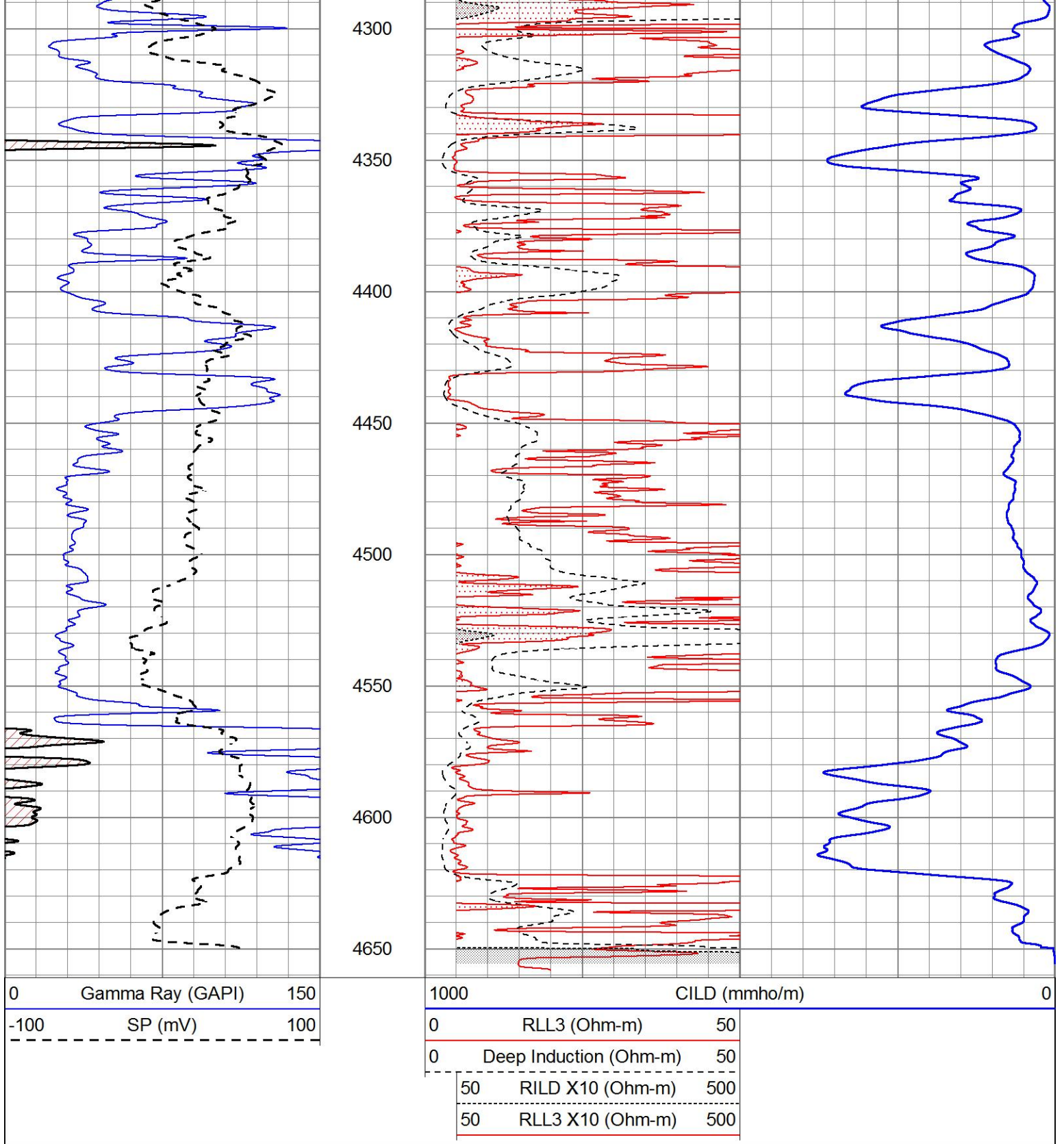






3750
3800
3850
3900
3950
4000
4050
4100
4150
4200
4250

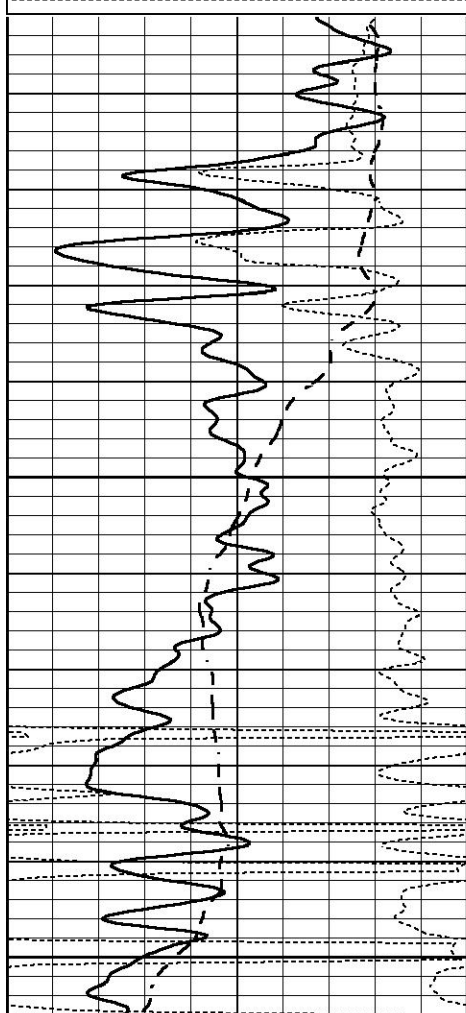




ANHYDRITE

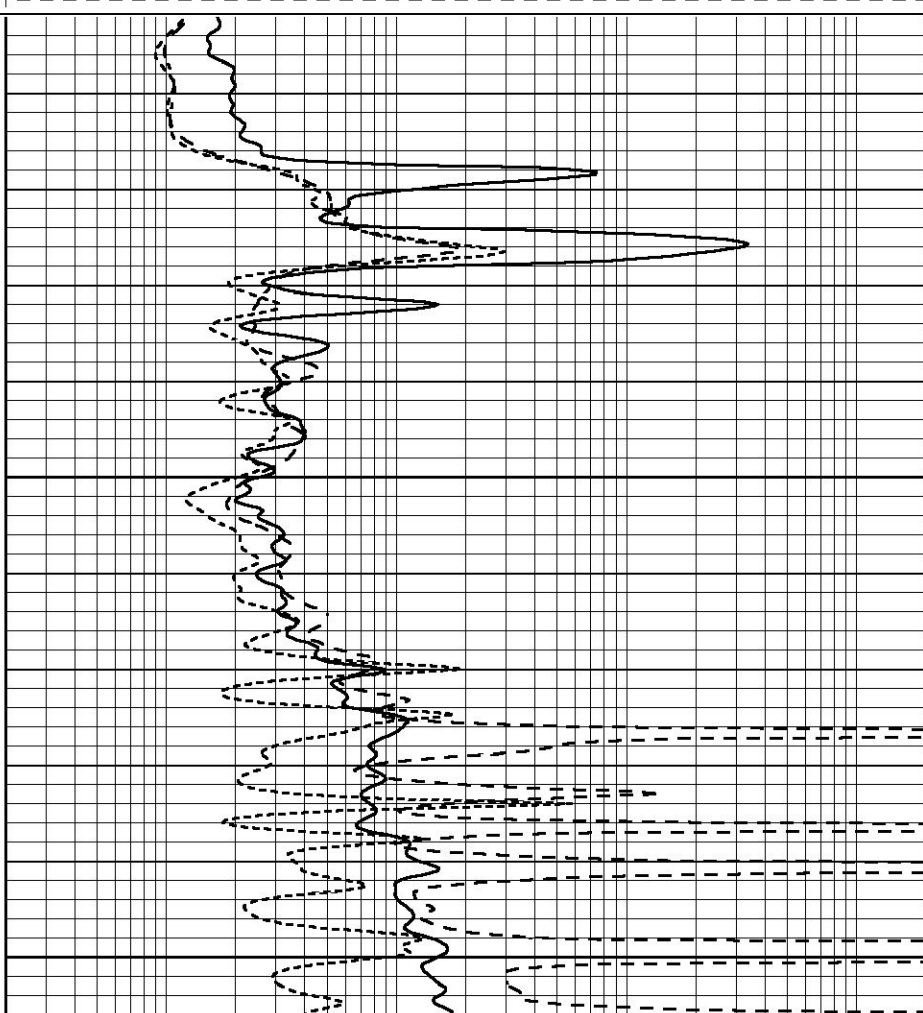
Database File 9738pe.db
 Dataset Pathname pass3A
 Presentation Format _dil
 Dataset Creation Sun Nov 23 14:15:49 2025
 Charted by Depth in Feet scaled 1:240

0	GAMMA RAY (GAPI)	150
-100	SP (mV)	100
-250	Rxo/Rt	50



0	GAMMA RAY (GAPI)	150
-100	SP (mV)	100
-250	Rxo/Rt	50

0.2	SHALLOW GUARD (Ohm-m)	2000
0.2	MEDIUM INDUCTION (Ohm-m)	2000
0.2	DEEP INDUCTION (Ohm-m)	2000



0.2	SHALLOW GUARD (Ohm-m)	2000
0.2	MEDIUM INDUCTION (Ohm-m)	2000
0.2	DEEP INDUCTION (Ohm-m)	2000

800

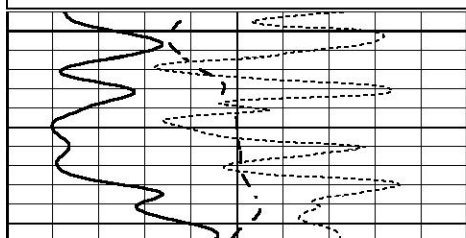
850



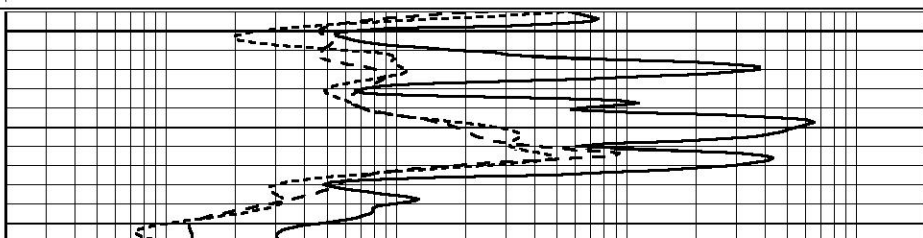
MAIN SECTION

Database File 9738pe.db
 Dataset Pathname pass3.TEST
 Presentation Format _dil
 Dataset Creation Mon Nov 24 14:32:12 2025
 Charted by Depth in Feet scaled 1:240

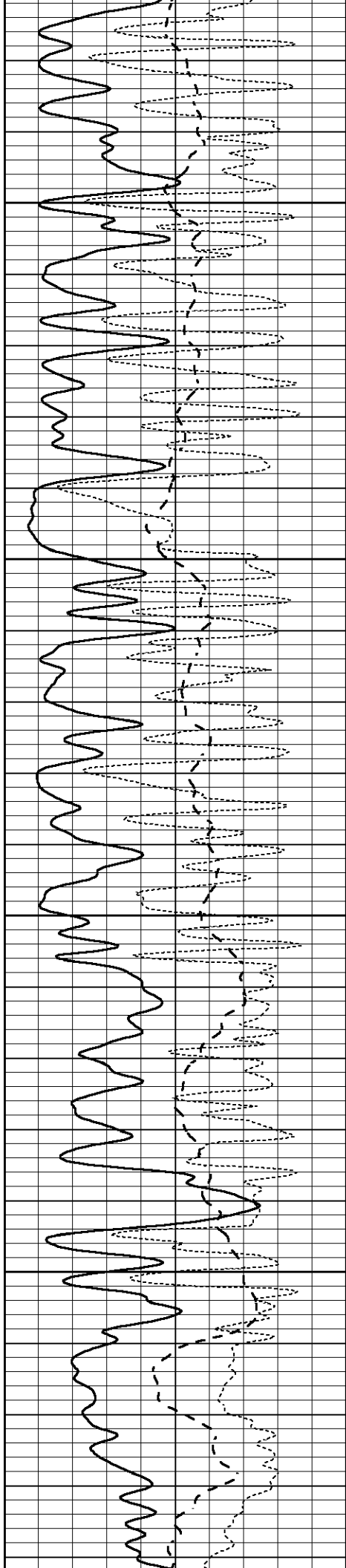
0	GAMMA RAY (GAPI)	150
-100	SP (mV)	100
-250	Rxo/Rt	50



0.2	SHALLOW GUARD (Ohm-m)	2000
0.2	MEDIUM INDUCTION (Ohm-m)	2000
0.2	DEEP INDUCTION (Ohm-m)	2000



1950

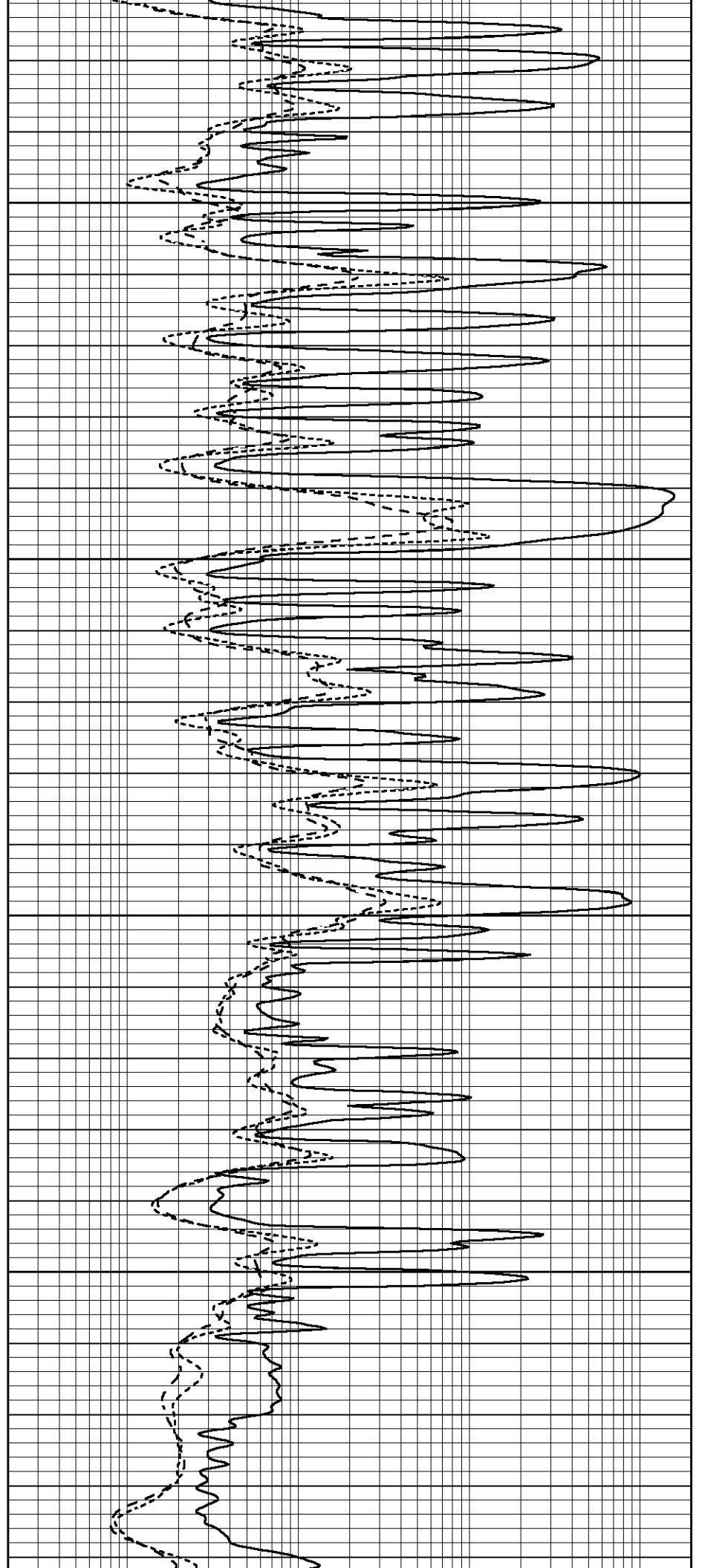


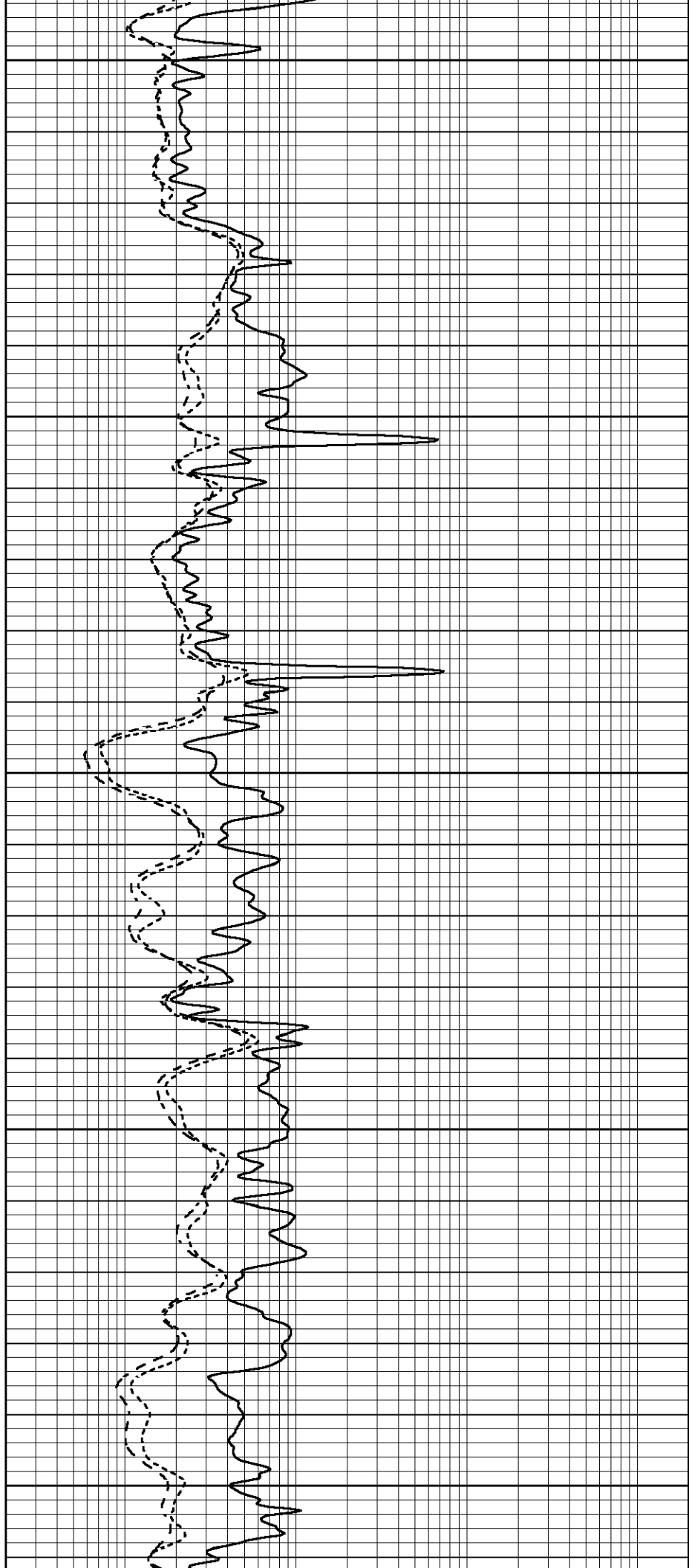
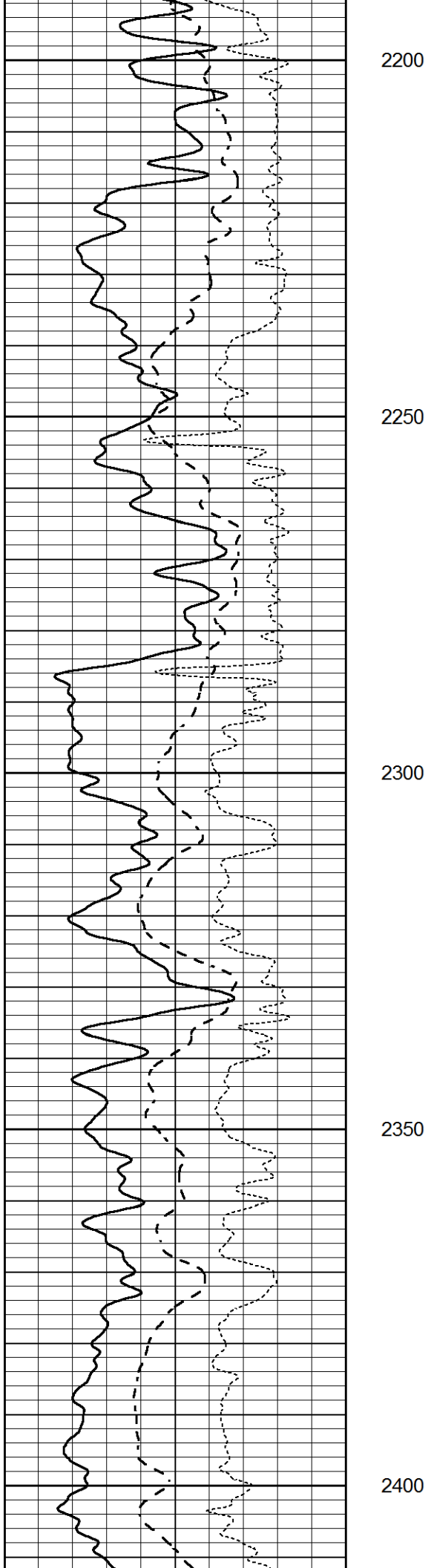
2000

2050

2100

2150



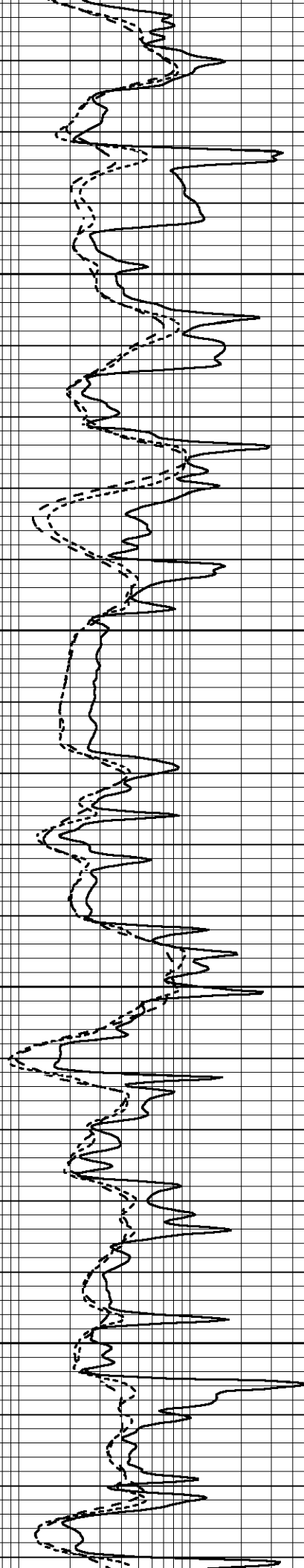
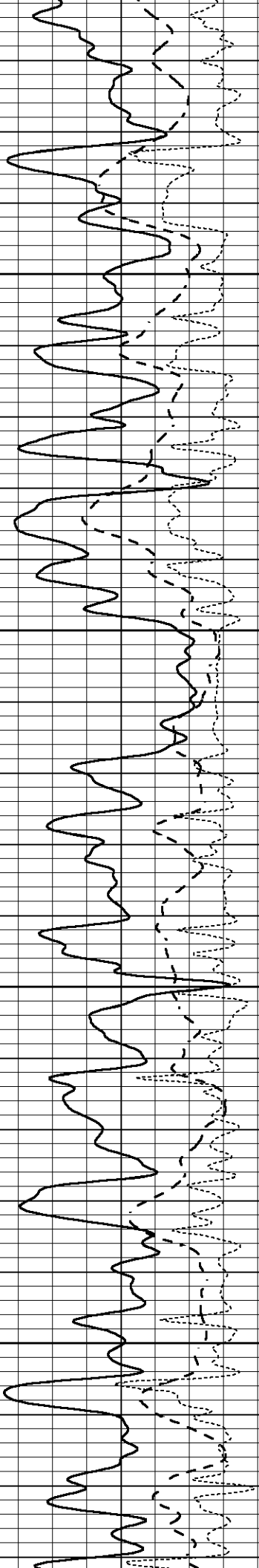


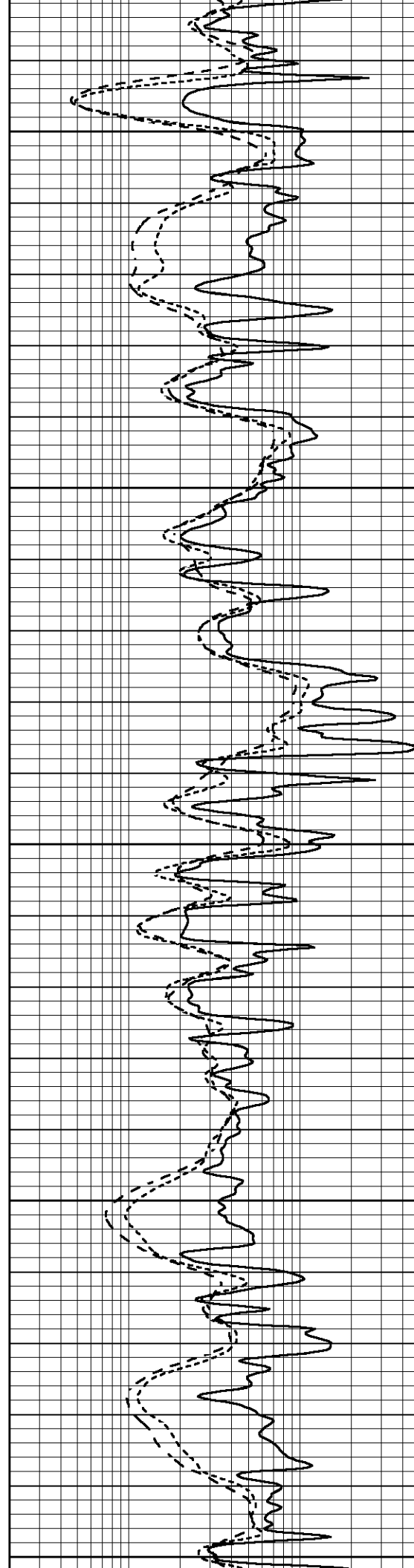
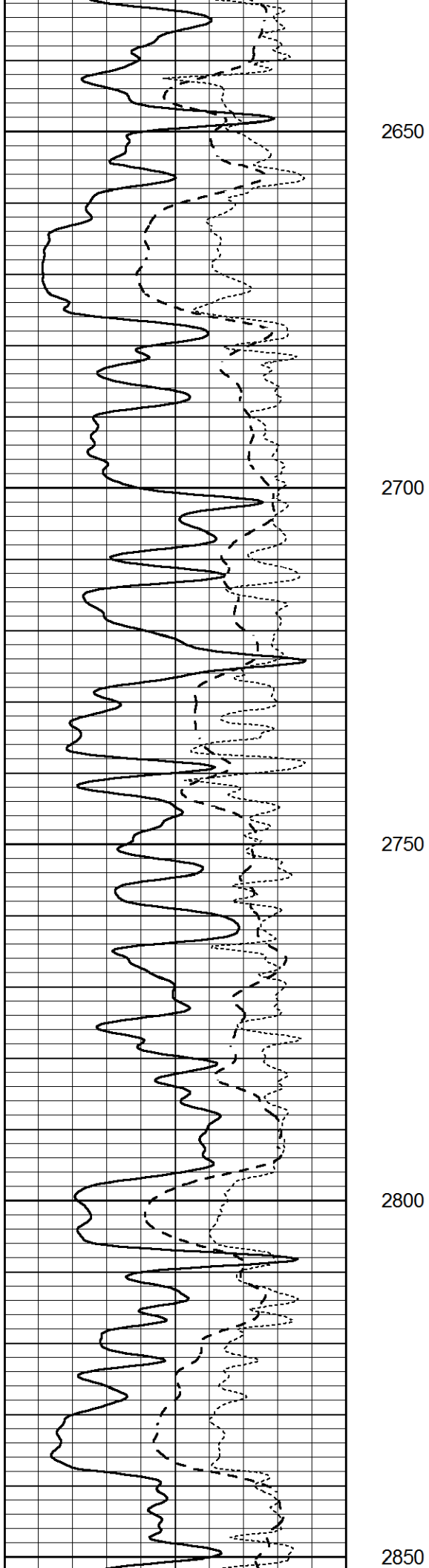
2450

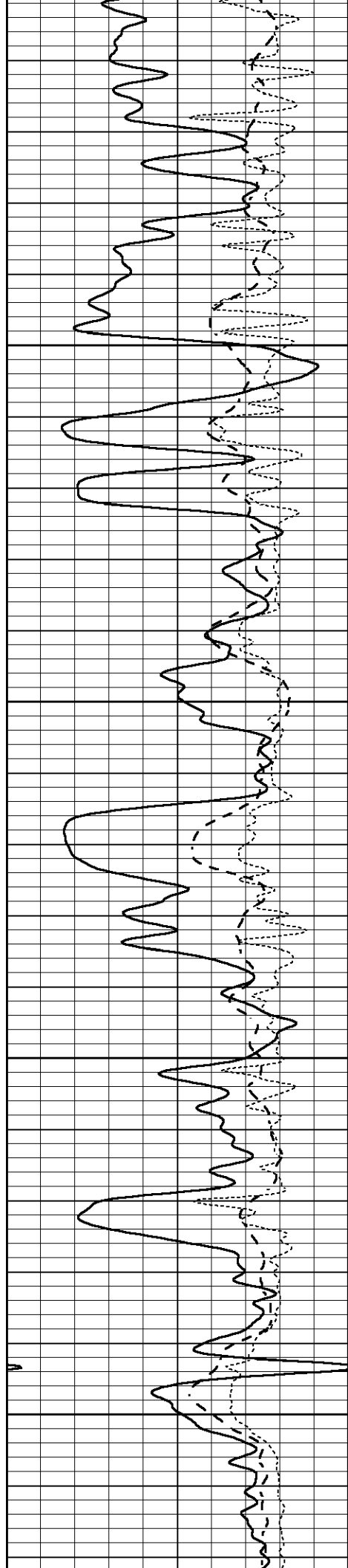
2500

2550

2600





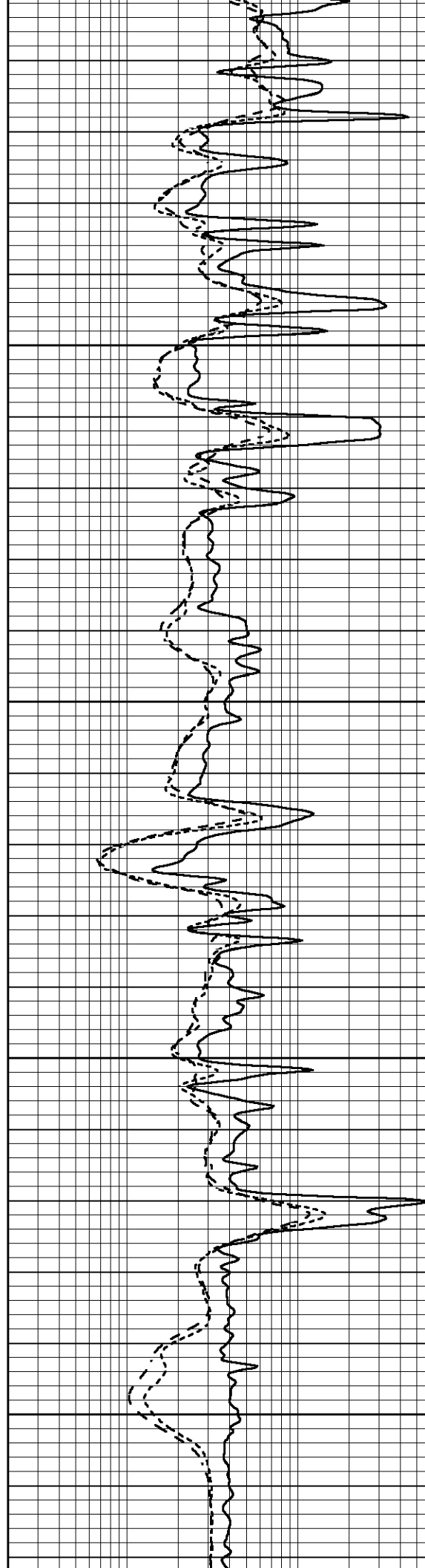


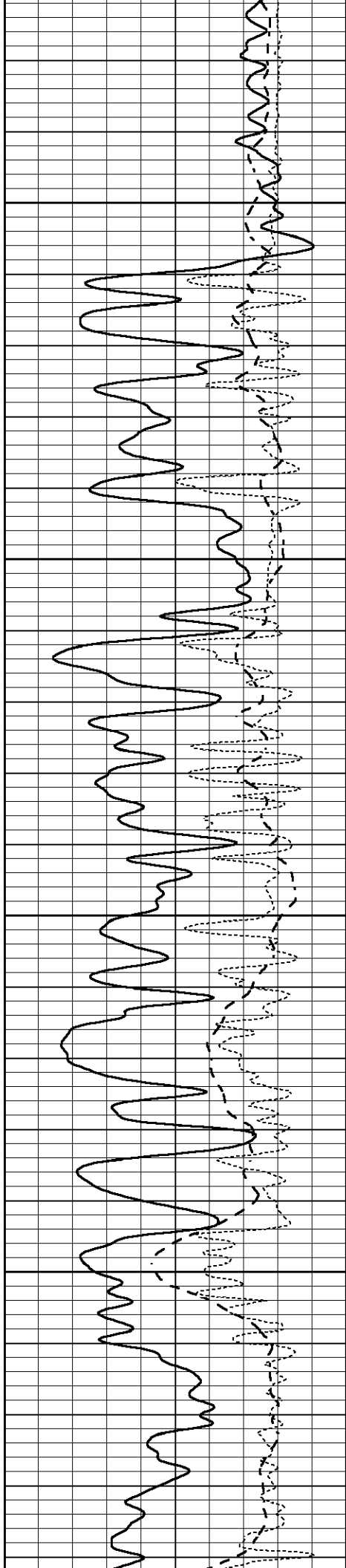
2900

2950

3000

3050



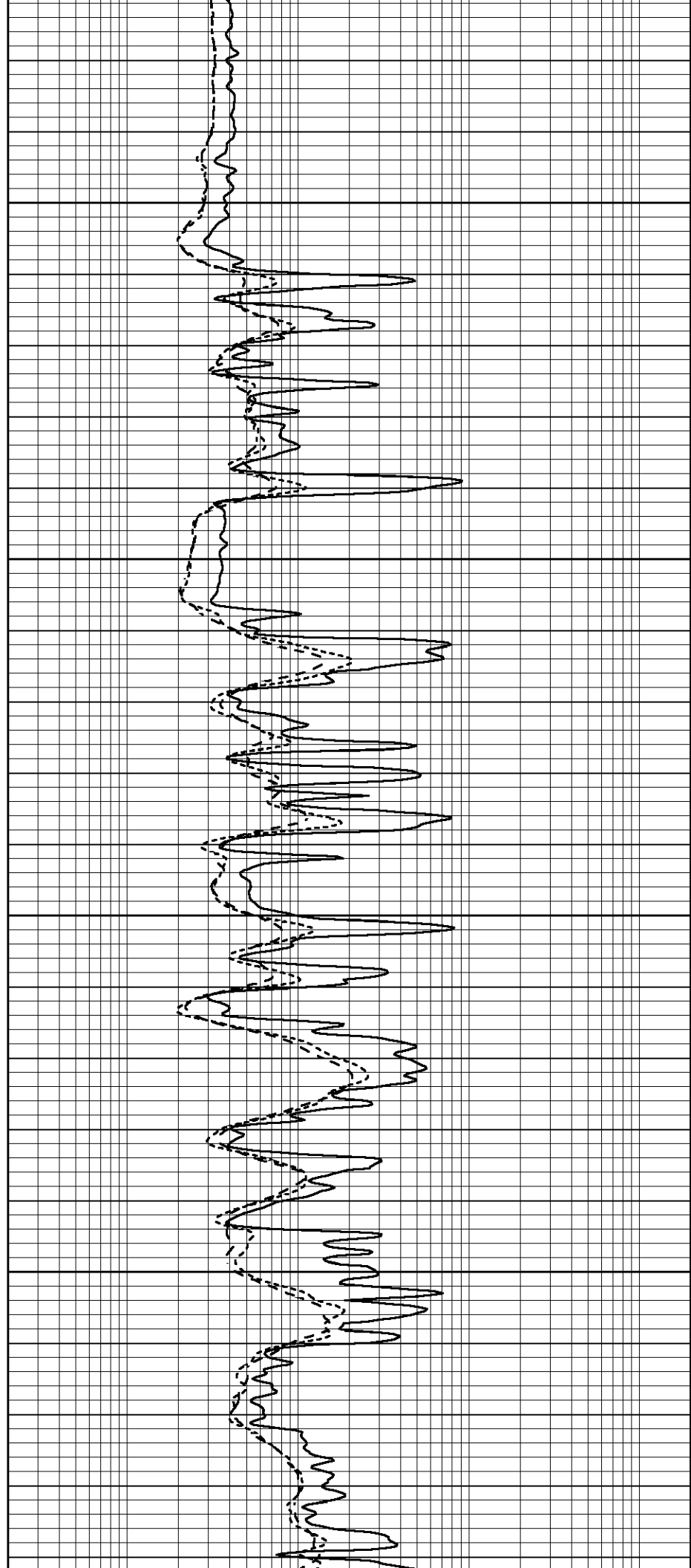


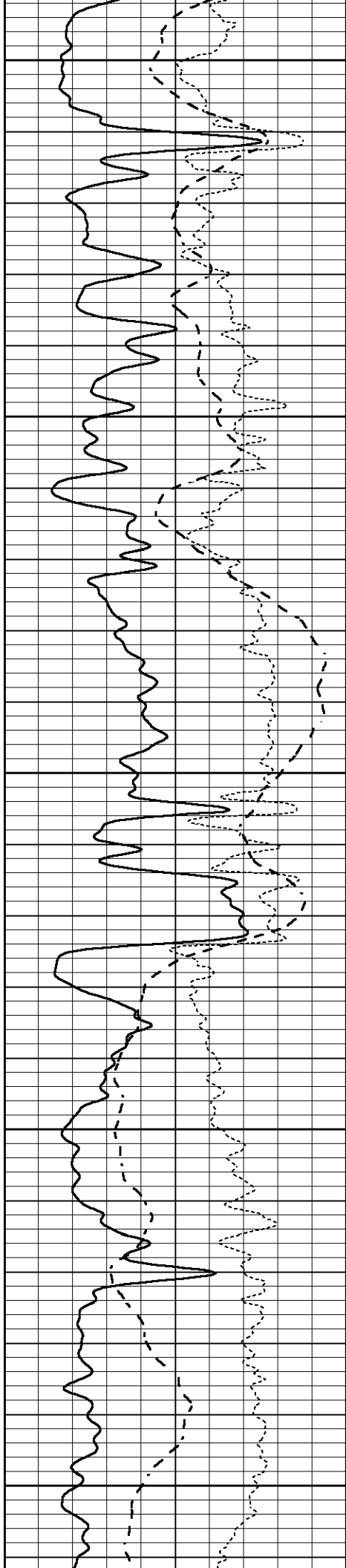
3100

3150

3200

3250





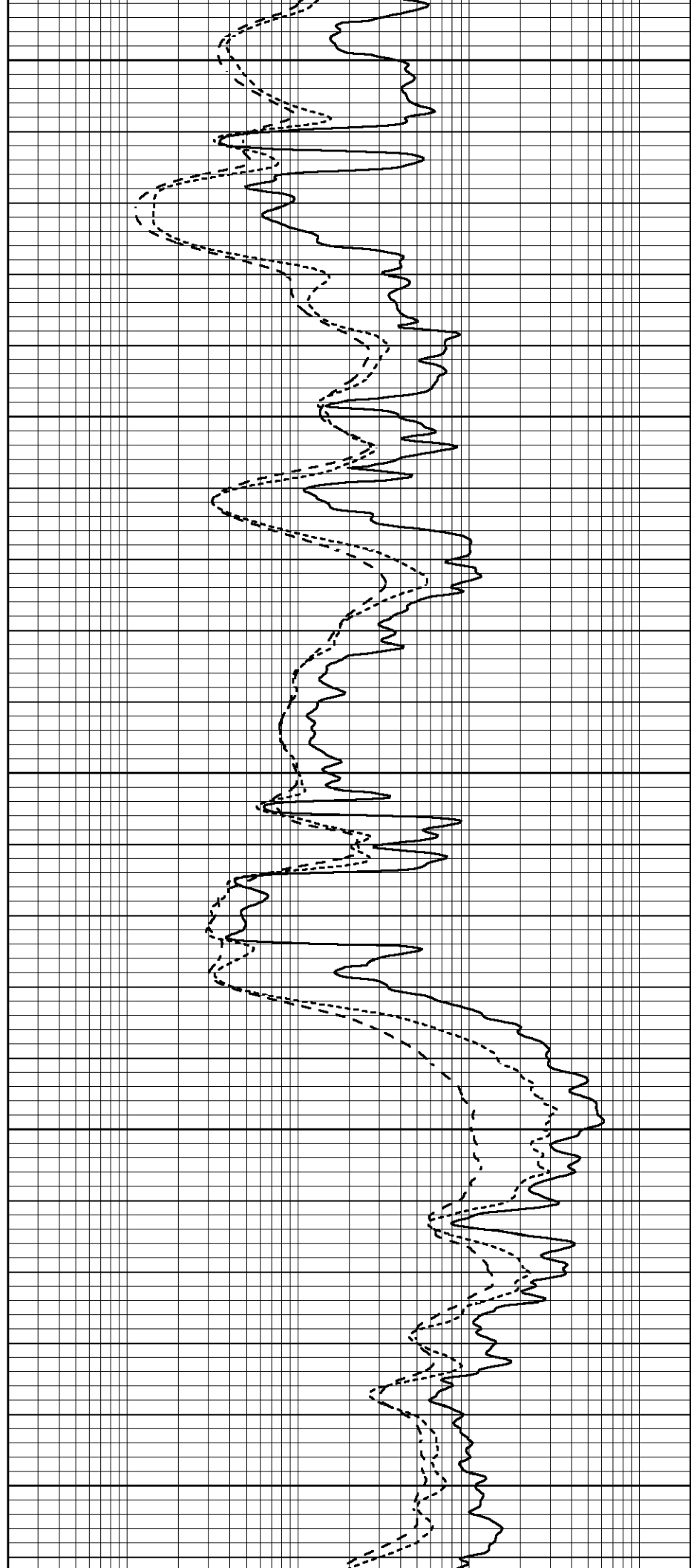
3300

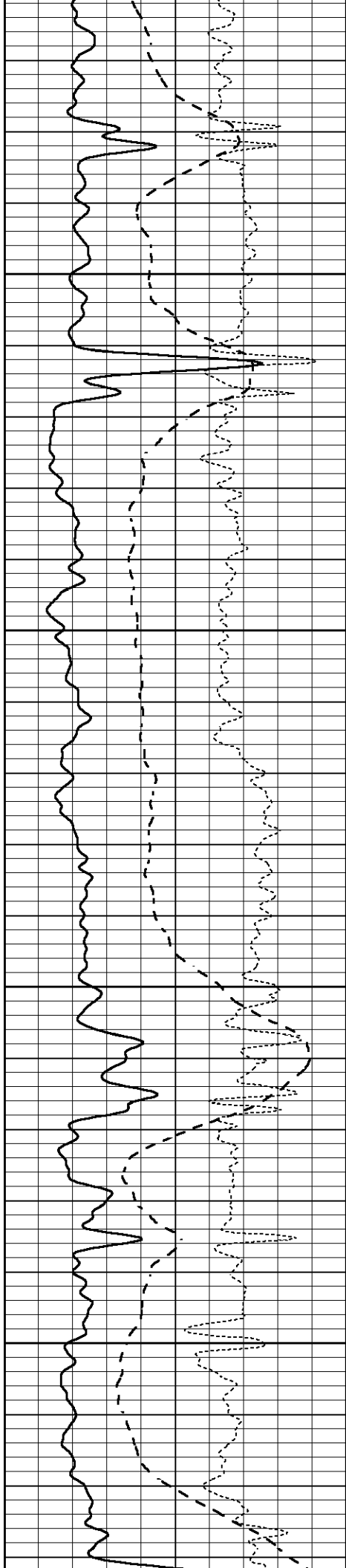
3350

3400

3450

3500



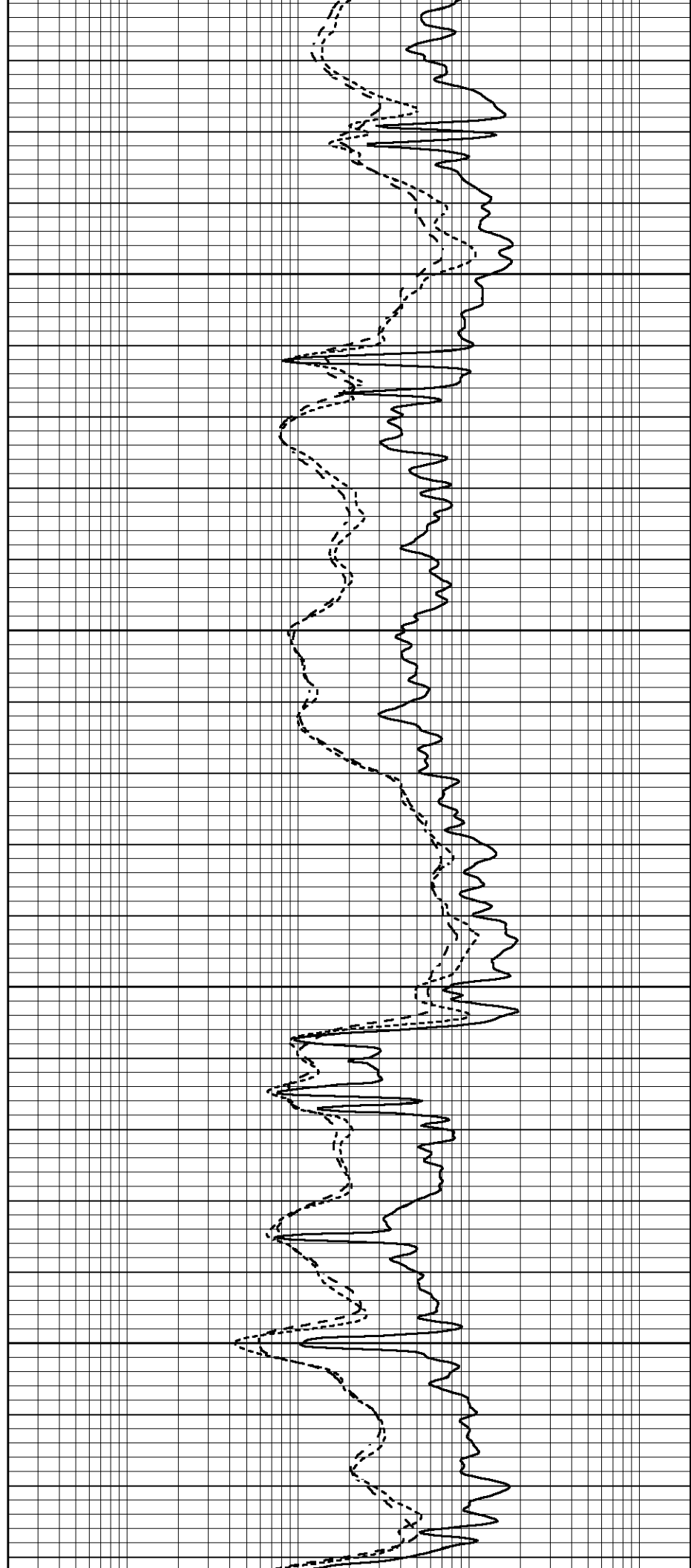


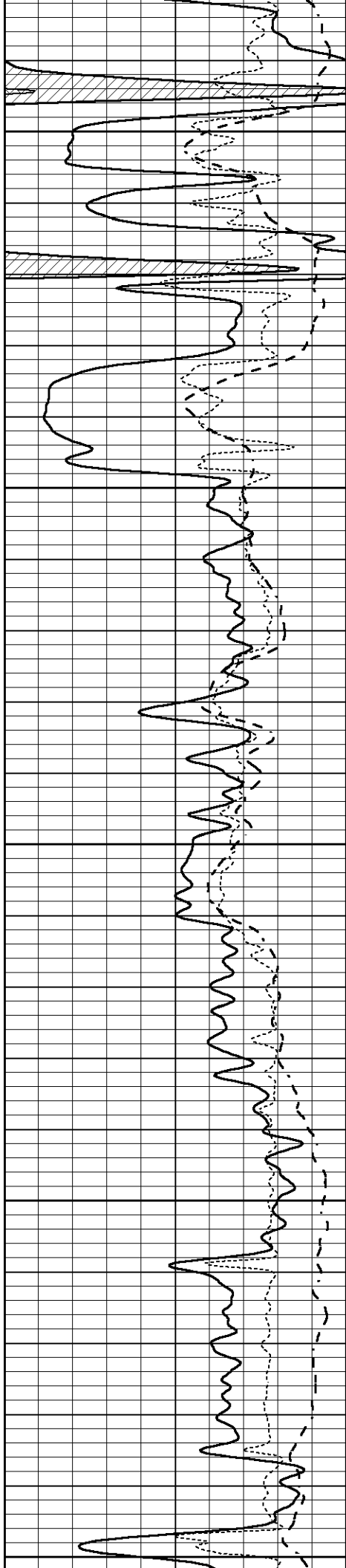
3550

3600

3650

3700





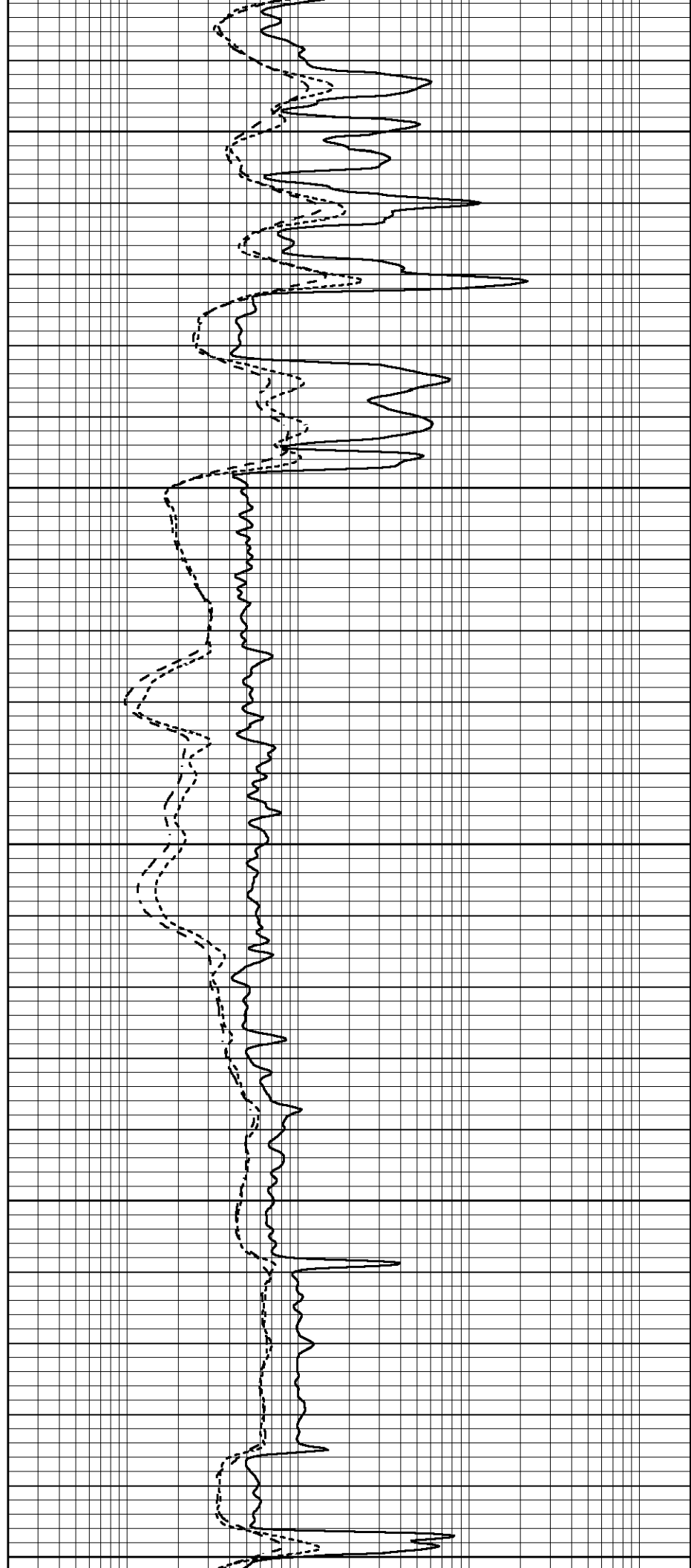
3750

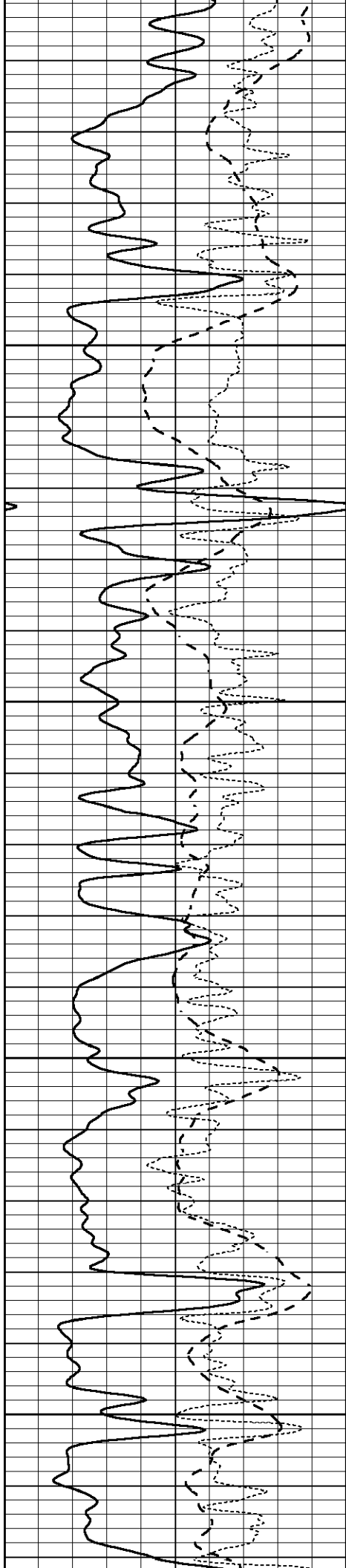
3800

3850

3900

3950



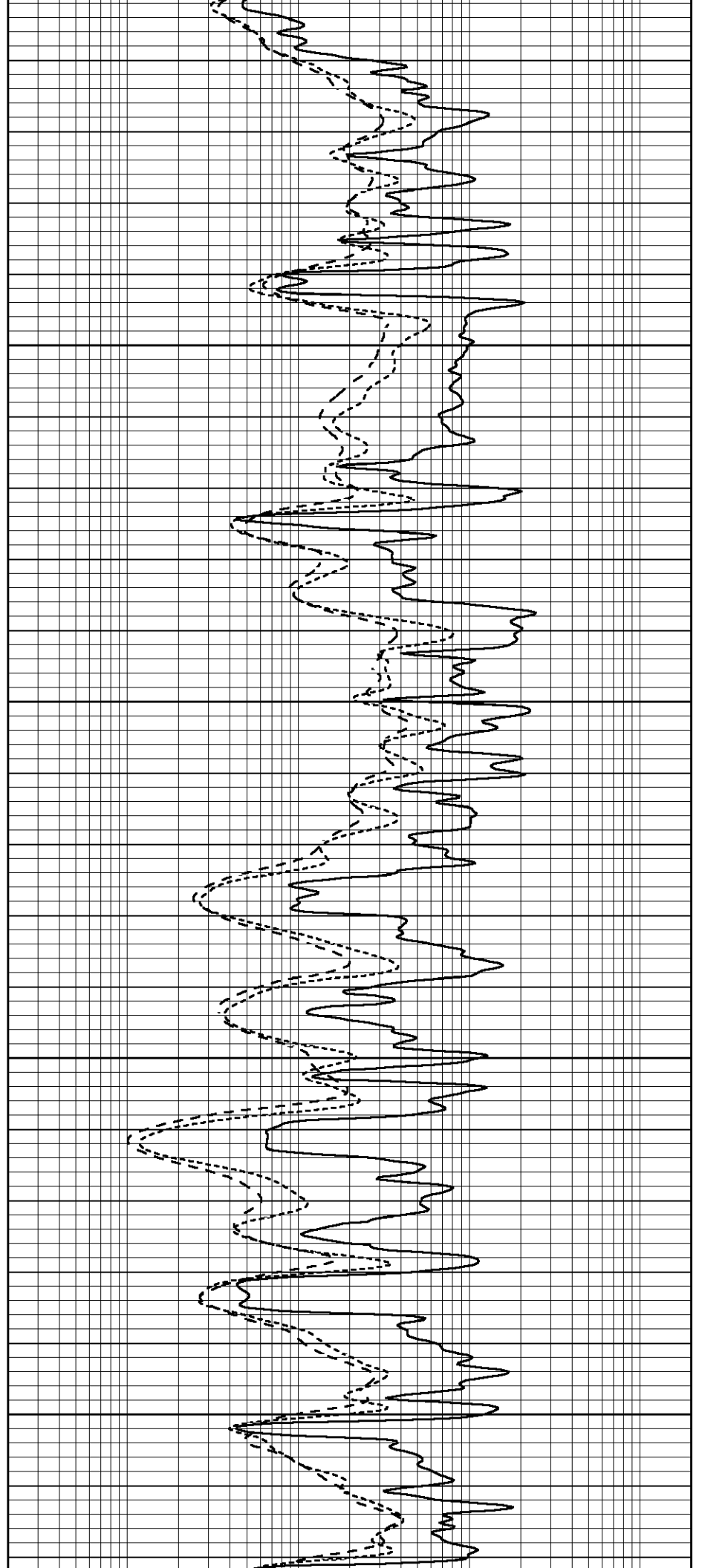


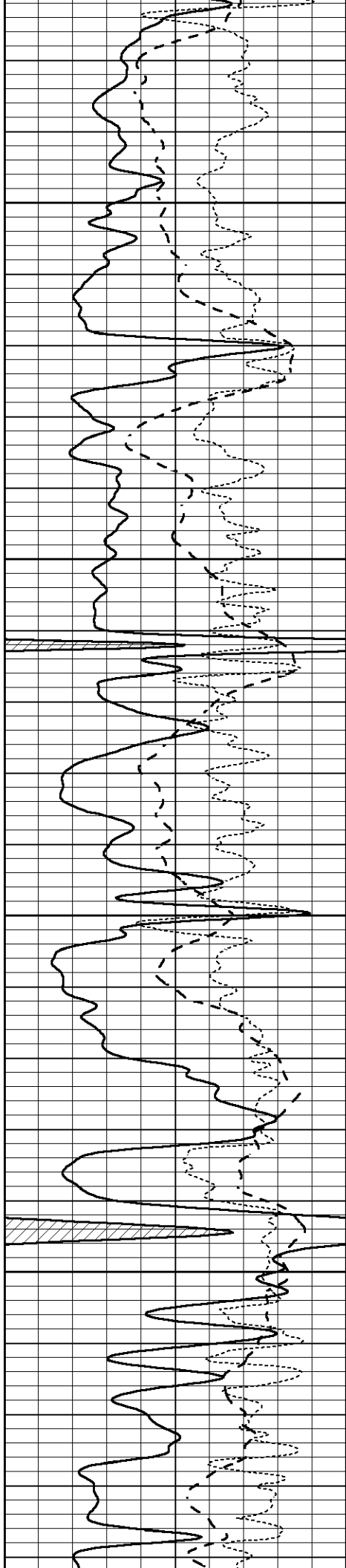
4000

4050

4100

4150



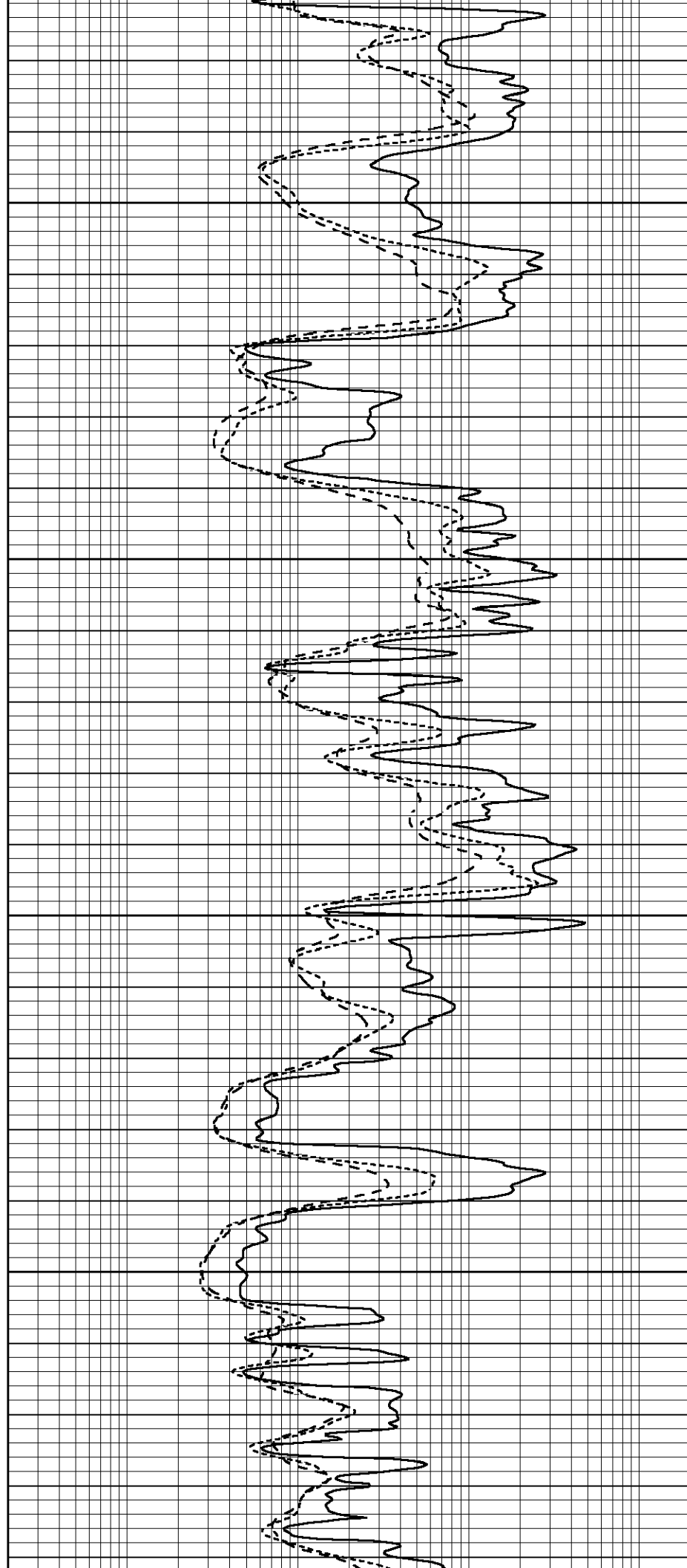


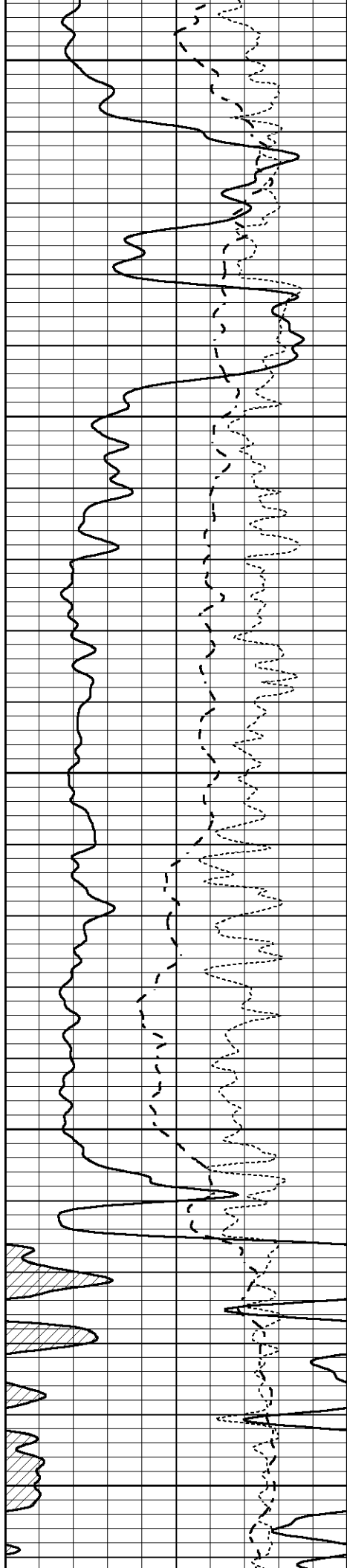
4200

4250

4300

4350





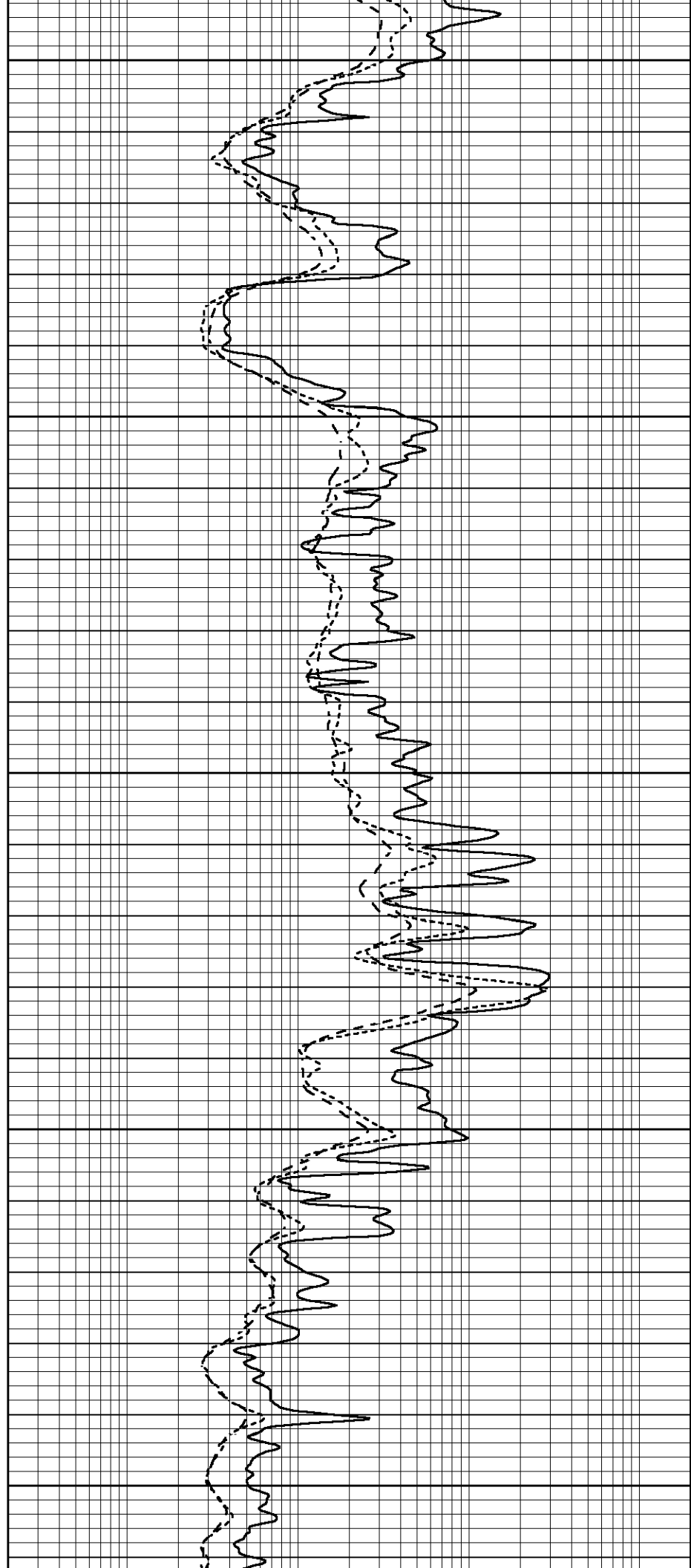
4400

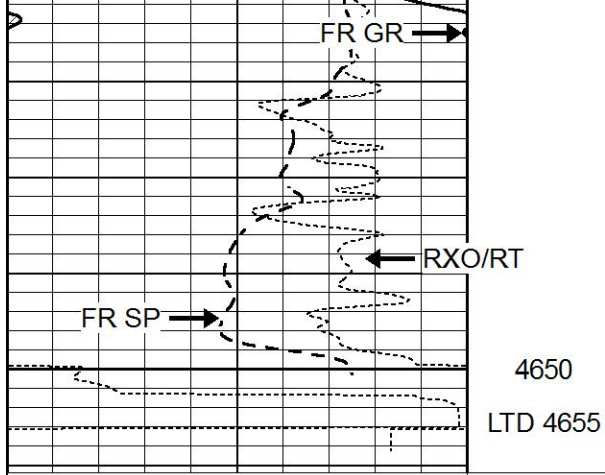
4450

4500

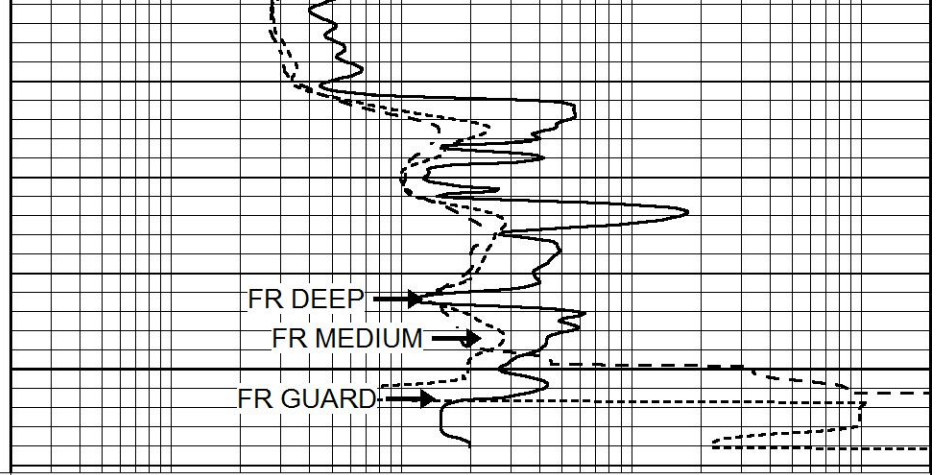
4550

4600





0	GAMMA RAY (GAPI)	150
-100	SP (mV)	100
-250	Rxo/Rt	50



0.2	SHALLOW GUARD (Ohm-m)	2000
0.2	MEDIUM INDUCTION (Ohm-m)	2000
0.2	DEEP INDUCTION (Ohm-m)	2000

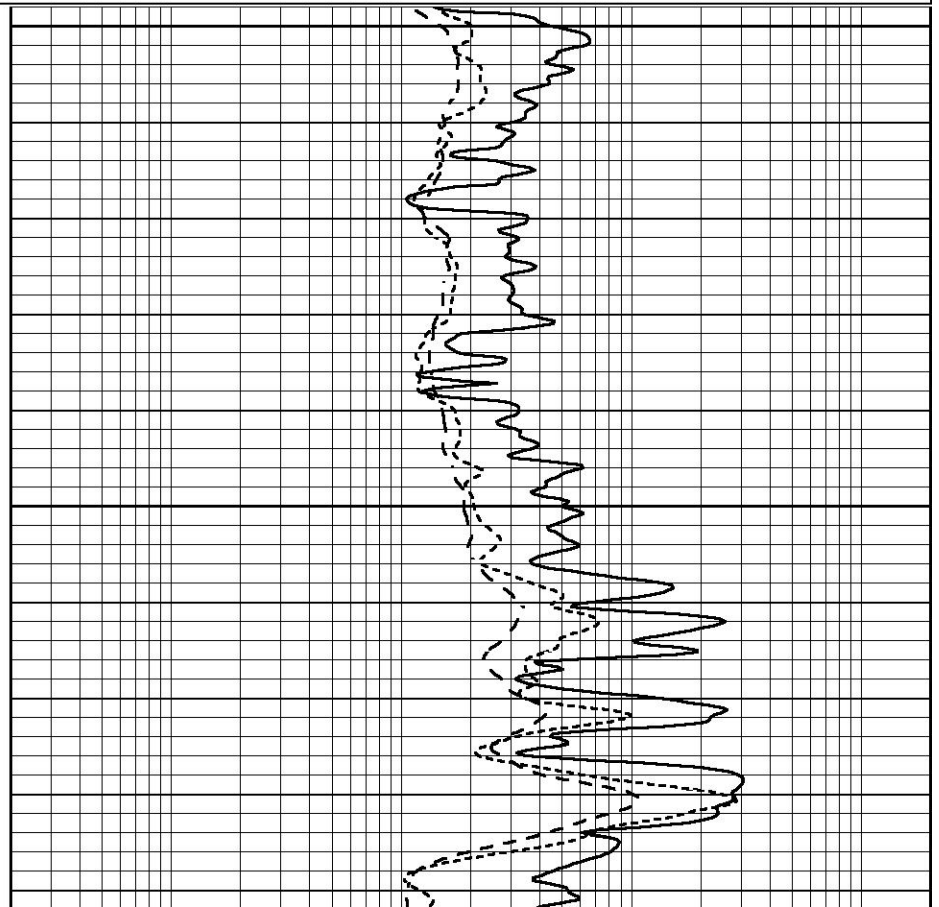
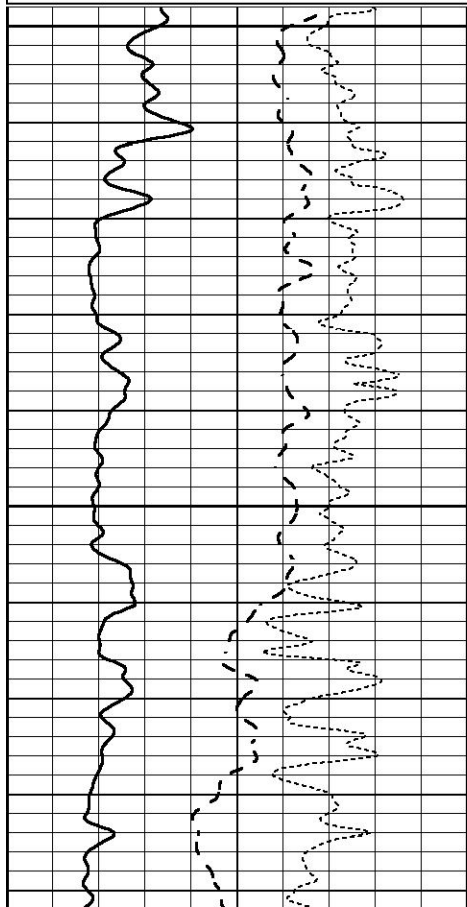


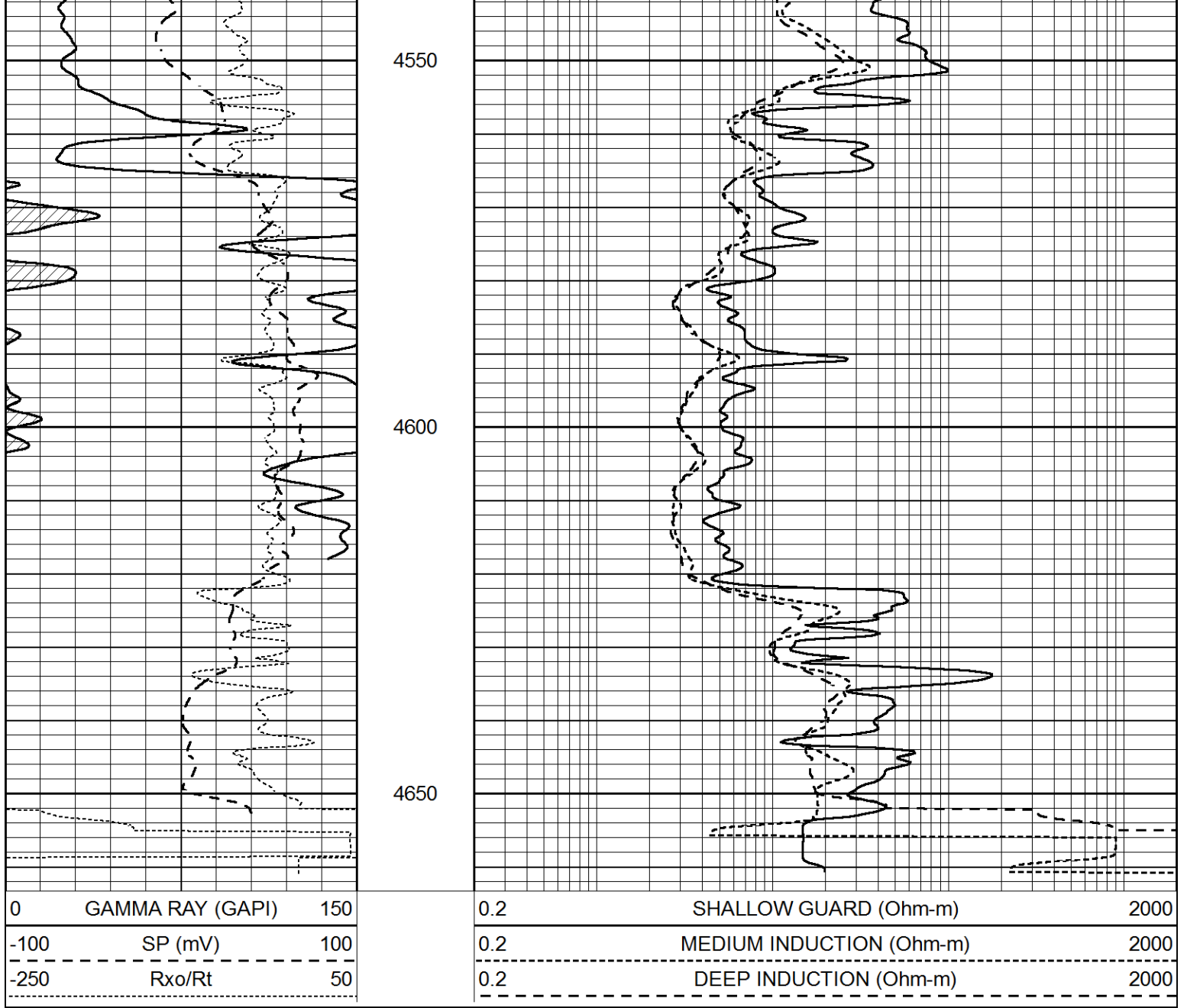
REPEAT SECTION

Database File 9738pe.db
 Dataset Pathname pass2.R
 Presentation Format _dil
 Dataset Creation Sun Nov 23 11:39:33 2025
 Charted by Depth in Feet scaled 1:240

0	GAMMA RAY (GAPI)	150
-100	SP (mV)	100
-250	Rxo/Rt	50

0.2	SHALLOW GUARD (Ohm-m)	2000
0.2	MEDIUM INDUCTION (Ohm-m)	2000
0.2	DEEP INDUCTION (Ohm-m)	2000





Calibration Report

Database File 9738pe.db
 Dataset Pathname pass2.R
 Dataset Creation Sun Nov 23 11:39:33 2025

Dual Induction Calibration Report

Serial-Model: FW1410-56-Probe
 Surface Cal Performed: Thu Sep 25 23:02:35 2025
 Downhole Cal Performed: Tue Jul 25 12:15:37 2017
 After Survey Verification Performed: Tue Jul 25 12:15:38 2017

Surface Calibration

Loop:	Readings			References			Results	
	Air	Loop	V	Air	Loop	mmho/m	m	b
Deep	0.008	0.765	V	1.000	400.000	mmho/m	520.000	17.000
Medium	-0.056	0.761	V	1.000	464.000	mmho/m	540.000	204.000
Internal:	Zero	Cal		Zero	Cal		m	b
Deep	0.005	0.624	V	0.000	400.000	mmho/m	645.611	-3.034
Medium	0.012	0.721	V	0.000	464.000	mmho/m	653.591	7.532

Downhole Calibration								
	Readings			References			Results	
	Zero	Cal		Zero	Cal		m'	b'
Deep	-0.647	301.329	mmho/m	-0.780	336.378	mmho/m	1.117	-0.058
Medium	38.256	411.013	mmho/m	39.046	441.706	mmho/m	1.080	-2.280
LL3		7.471	V		2500.000	Ohm-m		
		0.001	V		20.000	Ohm-m		
		-7.085	V		4000.000	mmho-m		

After Survey Verification								
	Readings			Targets			Results	
	Zero	Cal		Zero	Cal		m'	b'
Deep	0.000	0.000	mmho/m	-0.647	301.329	mmho/m	1.000	0.000
Medium	0.000	0.000	mmho/m	38.256	411.013	mmho/m	1.000	0.000
LL3		0.000	Ohm-m		1500.000	Ohm-m		
		0.000	Ohm-m		20.000	Ohm-m		
		0.000	mmho-m		3745.000	mmho-m		

Litho Density Calibration Report
Serial: 003 Model: PRB

Master Calibration						Performed Fri Aug 01 11:20:40 2025		
	Background	Magnesium	Aluminum	Aluminum+Fe				
Window 1	1424.0	7274.5	2614.8	2400.8				cps
Window 2	1319.8	6538.4	2382.0	2203.6				cps
Window 3	1217.6	5121.1	2012.2	1909.9				cps
Window 4	332.0	333.7	334.9	328.8				cps
Long Space	0.0	5218.6	1062.2	883.8				cps
Short Space	1.8	2242.5	1399.2	1191.8				cps
Rho		1.7100	2.5900	0.0000				g/cc
Pe		2.0000	2.7500	5.7900				
Rib Angle	: 43.5	Rib Slope	: 0.949	Density/Spine Ratio			: 0.530	
Spine Angle	: 73.5	Spine Slope	: 3.375	Spine Intercept			: -17.5	

Before Survey Verification						Performed Wed Dec 31 18:00:00 1969		
	Background	Magnesium	Aluminum	Aluminum+Fe				
Window 1	0.0	0.0	0.0	0.0				cps
Window 2	0.0	0.0	0.0	0.0				cps
Window 3	0.0	0.0	0.0	0.0				cps
Window 4	0.0	0.0	0.0	0.0				cps
Long Space	0.0	0.0	0.0	0.0				cps
Short Space	0.0	0.0	0.0	0.0				cps
Measured Rho		0.0000	0.0000	0.0000				g/cc
Measured Correction		0.0000	0.0000	0.0000				g/cc
Measured Pe			0.0000	0.0000				

After Survey Verification						Performed Wed Dec 31 18:00:00 1969		
	Background	Magnesium	Aluminum	Aluminum+Fe				
Window 1	0.0	0.0	0.0	0.0				cps
Window 2	0.0	0.0	0.0	0.0				cps
Window 3	0.0	0.0	0.0	0.0				cps
Window 4	0.0	0.0	0.0	0.0				cps
Long Space	0.0	0.0	0.0	0.0				cps
Short Space	0.0	0.0	0.0	0.0				cps

Measured Rho	0.0000	0.0000	0.0000	g/cc
Measured Correction	0.0000	0.0000	0.0000	g/cc
Measured Pe		0.0000	0.0000	

Compensated Neutron Calibration Report

Serial Number: 080621PMC
Tool Model: NABORS

PRE-SURVEY VERIFICATION

Detector	Readings	Measured	Target
Short Space	cps		
Long Space	cps	pu	pu

POST-SURVEY VERIFICATION

Detector	Readings	Measured	Target
Short Space	cps		
Long Space	cps	pu	pu

Gamma Ray Calibration Report

Serial Number: 46001
Tool Model: Probe1
Performed: Thu Apr 20 09:55:57 2023

Calibrator Value: 1.0 GAPI

Background Reading: 0.0 cps
Calibrator Reading: 1.0 cps

Sensitivity: 0.4300 GAPI/cps