



MICRO LOG

Company PRATER OIL & GAS OPERATIONS, INC.
 Well KERR UNIT #1-23
 Field COATS WEST
 County PRATT
 State KANSAS

Company PRATER OIL & GAS OPERATIONS, INC.
 Well KERR UNIT #1-23
 Field COATS WEST
 County PRATT State KANSAS

Location: API #: 15-151-22617-0000
 2465 FNL & 1505 FEL
 SE - SE - SW - NE
 SEC 23 TWP 29S RGE 14W
 Permanent Datum GROUND LEVEL Elevation 1942
 Log Measured From KELLY BUSHING 11' A.G.L.
 Drilling Measured From KELLY BUSHING
 Other Services
 CDL/CNL/PE
 DIL/SON
 Elevation
 K.B. 1953
 D.F. 1951
 G.L. 1942

Date	11/23/25
Run Number	TWO
Depth Driller	4655
Depth Logger	4655
Bottom Logged Interval	4639
Top Log Interval	1950
Casing Driller	8.625 @ 475
Casing Logger	475
Bit Size	7.875
Type Fluid in Hole	CHEMICAL MUD
Density / Viscosity	9.1/60
pH / Fluid Loss	10.5/8.8
Source of Sample	FLOWLINE
Rm @ Meas. Temp	1.05 @ 69F
Rmf @ Meas. Temp	.788 @ 69F
Rmc @ Meas. Temp	1.26 @ 69F
Source of Rmf / Rmc	MEASUREMENT
Rm @ BHT	.594 @ 122F
Time Circulation Stopped	4 HOURS
Time Logger on Bottom	12:00 P.M.
Maximum Recorded Temperature	122F
Equipment Number	3802
Location	HAYS, KANSAS
Recorded By	COLE ROBBEN
Witnessed By	SCOTT ALBERG
	TJ DREILING

<<< Fold Here >>>

All interpretations are opinions based on inferences from electrical or other measurements and we cannot and do not guarantee the accuracy or correctness of any interpretation, and we shall not, except in the case of gross or willful negligence on our part, be liable or responsible for any loss, costs, damages, or expenses incurred or sustained by anyone resulting from any interpretation made by any of our officers, agents or employees. These interpretations are also subject to our general terms and conditions set out in our current Price Schedule.

Comments

THANK YOU FOR USING ELI WIRELINE SERVICES, HAYS, KS. (785) 628-6395

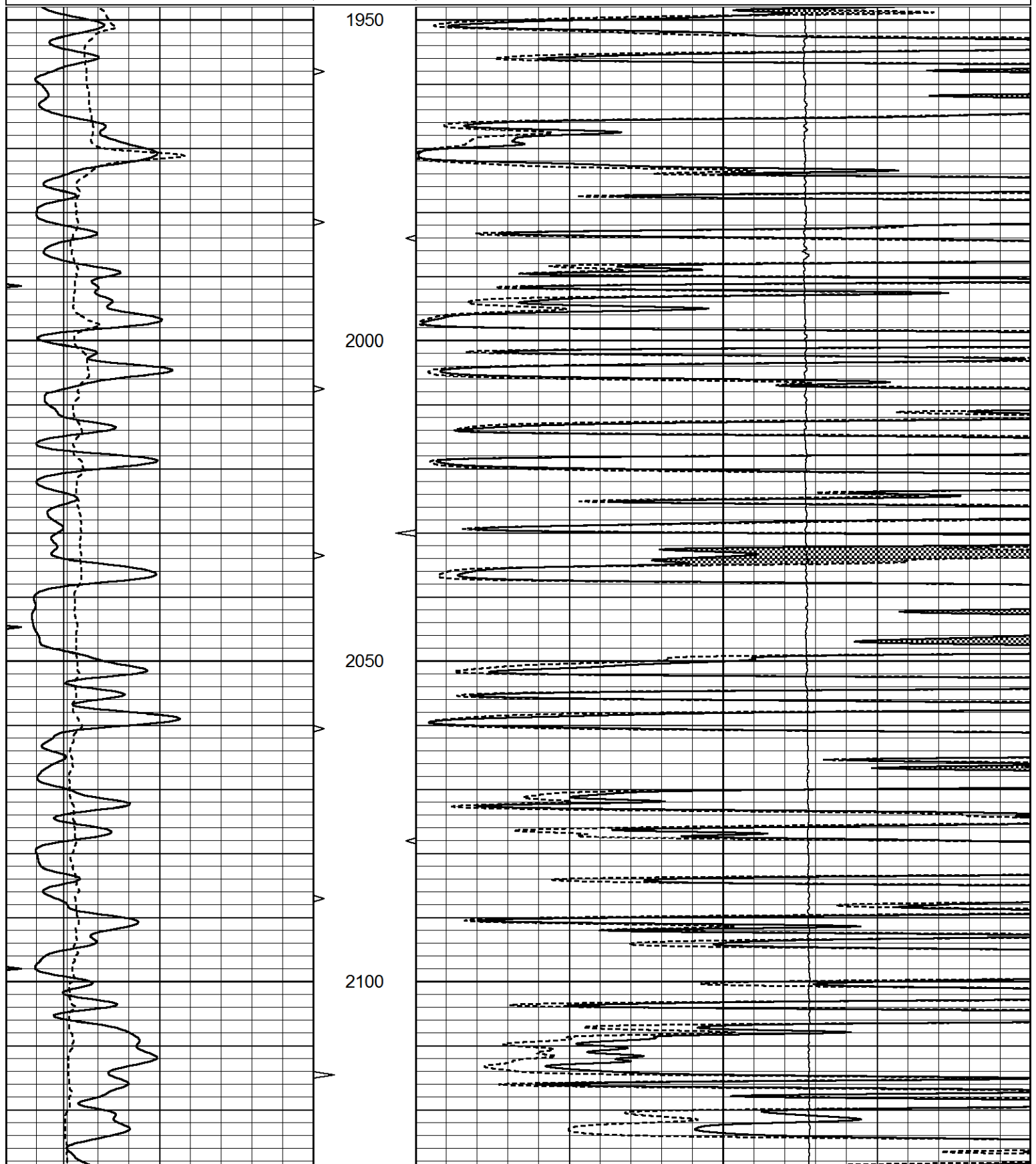
DIRECTIONS:
 FROM COATS, KANSAS - 1 MILE EAST ON SW 90TH, SOUTH 1/2 MILE ON SW 40TH, WEST ON SW 95TH 3/8TH MILE, NORTH INTO

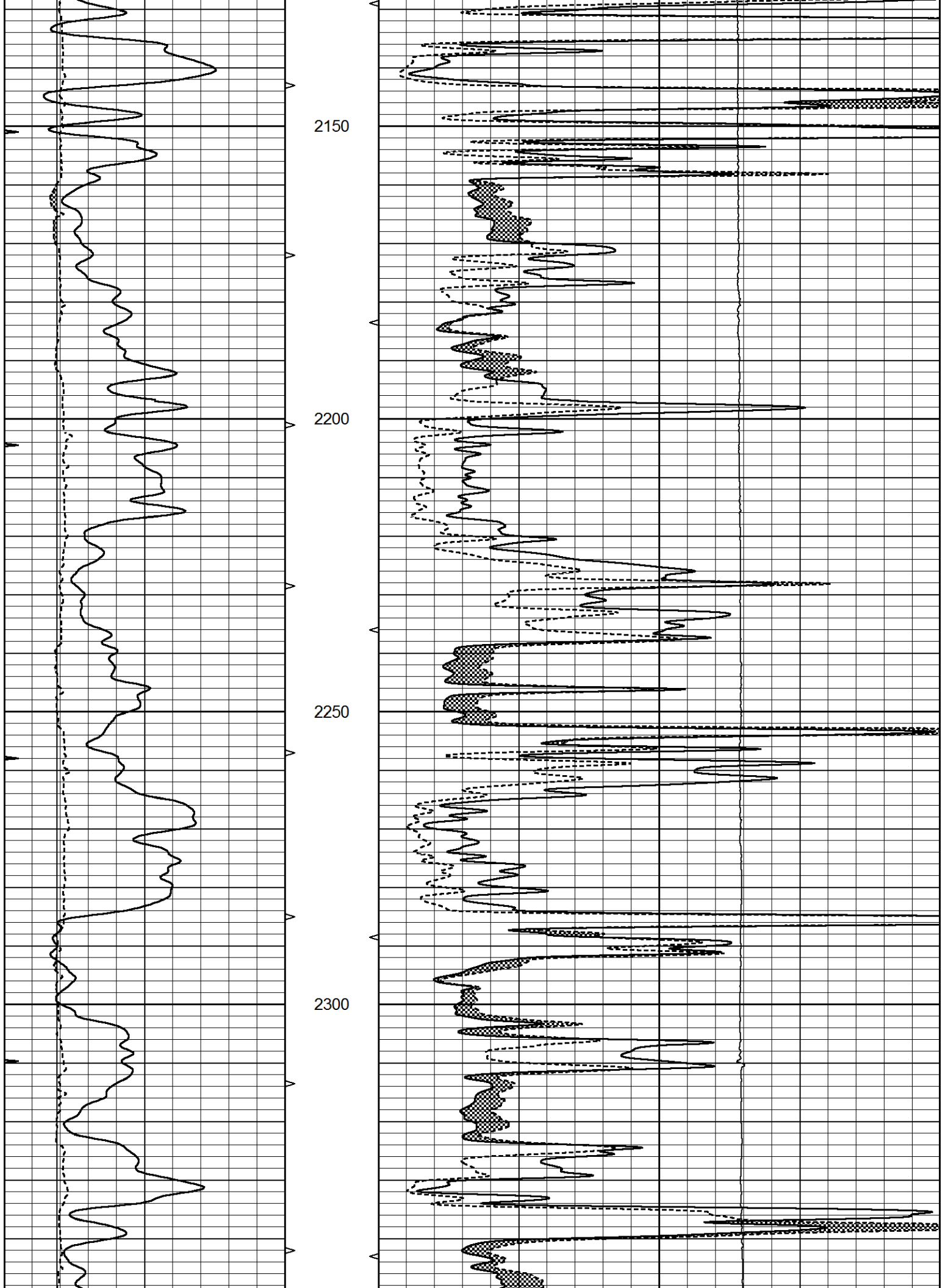


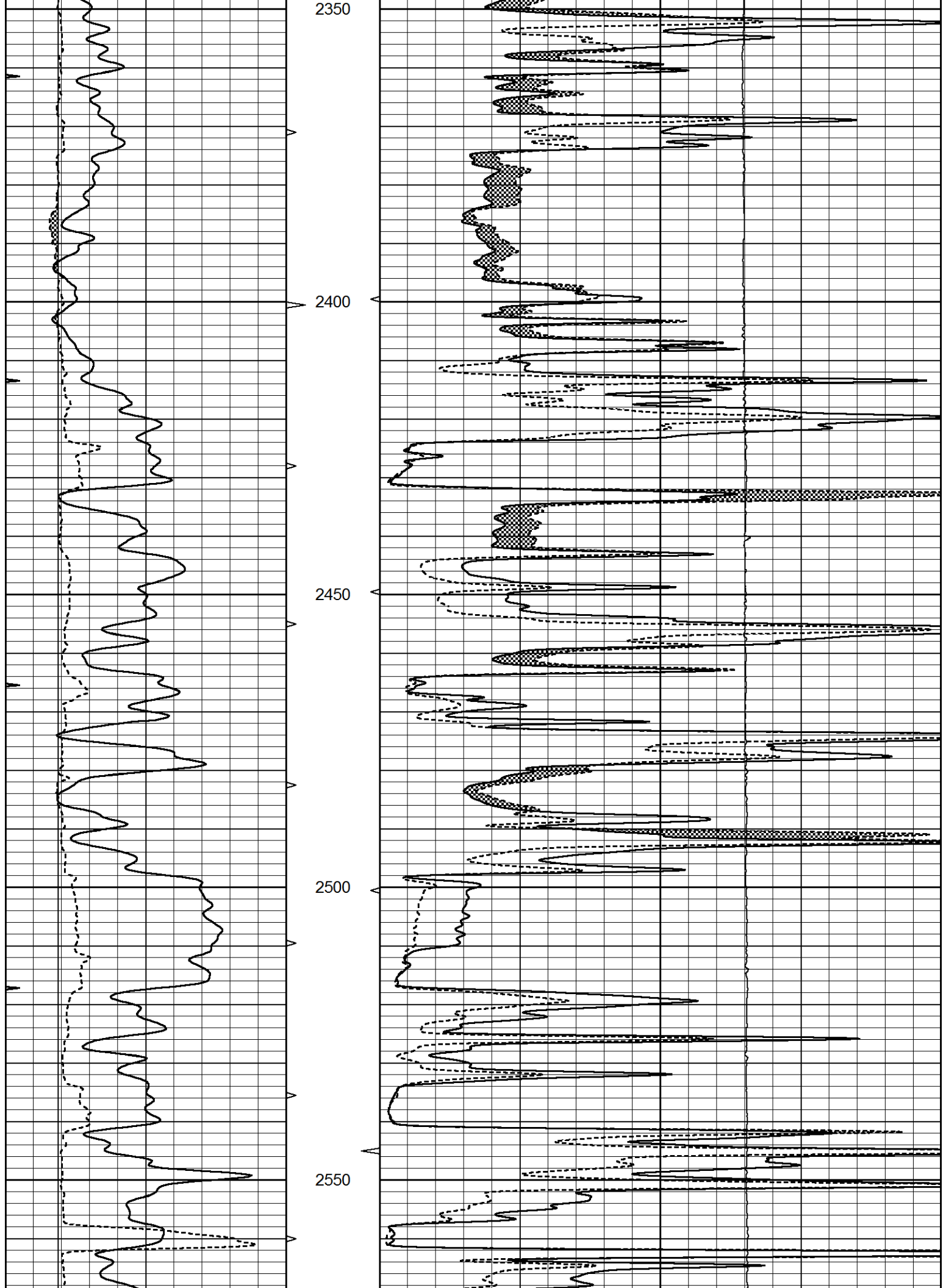
MAIN SECTION

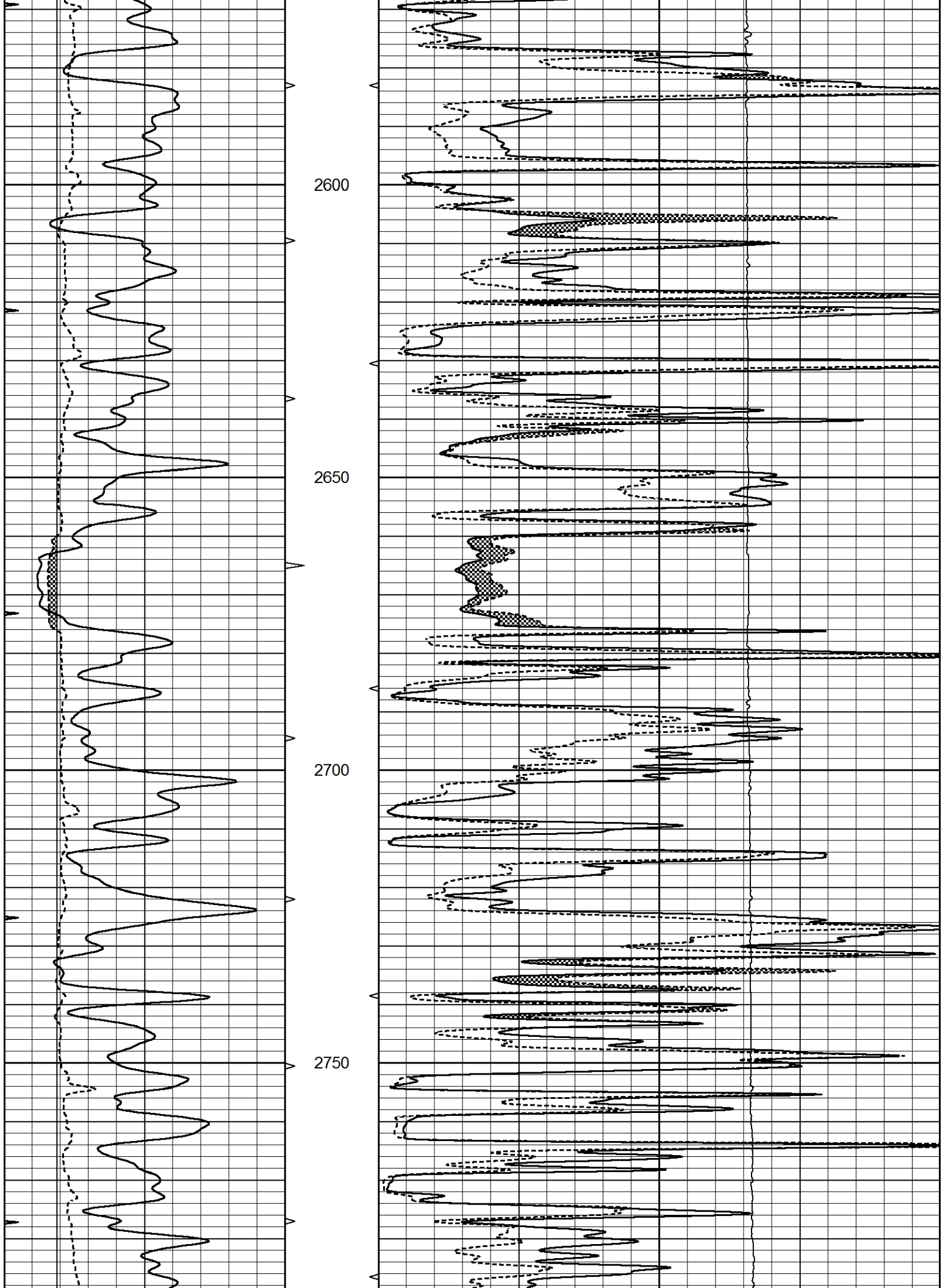
Database File 9738pe.db
 Dataset Pathname pass6.MEL
 Presentation Format _micro
 Dataset Creation Mon Nov 24 14:55:56 2025
 Charted by Depth in Feet scaled 1:240

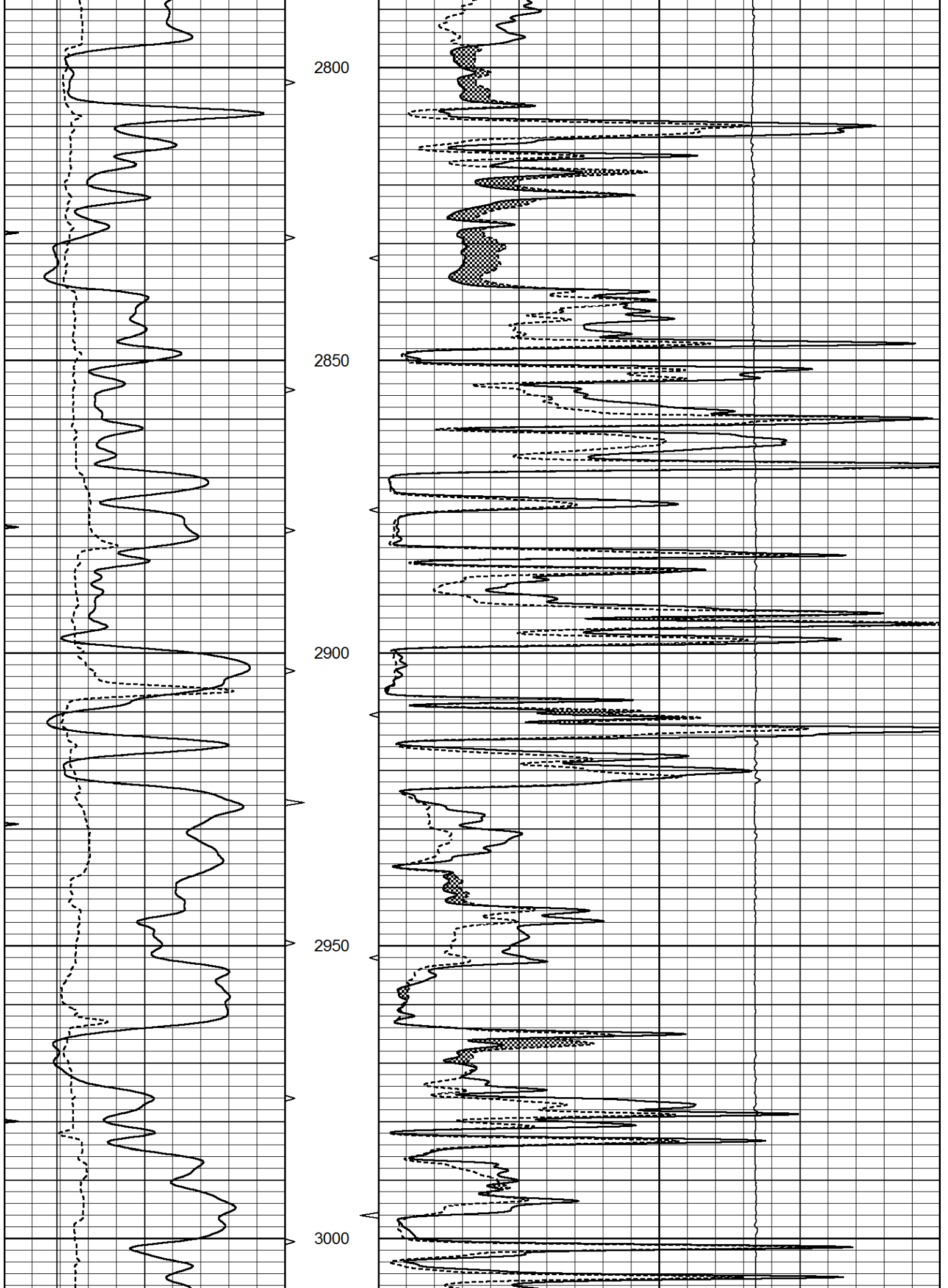
0	GAMMA RAY (GAPI)	150	ABHV	0	MEL1.5 (Ohm-m)	40
6	CALIPER (in)	16	10 (ft3)	0	MEL2.0 (Ohm-m)	40
0	MINMK	20	TBHV	0	LTEN (lb)	5000
			0 (ft3)	10		

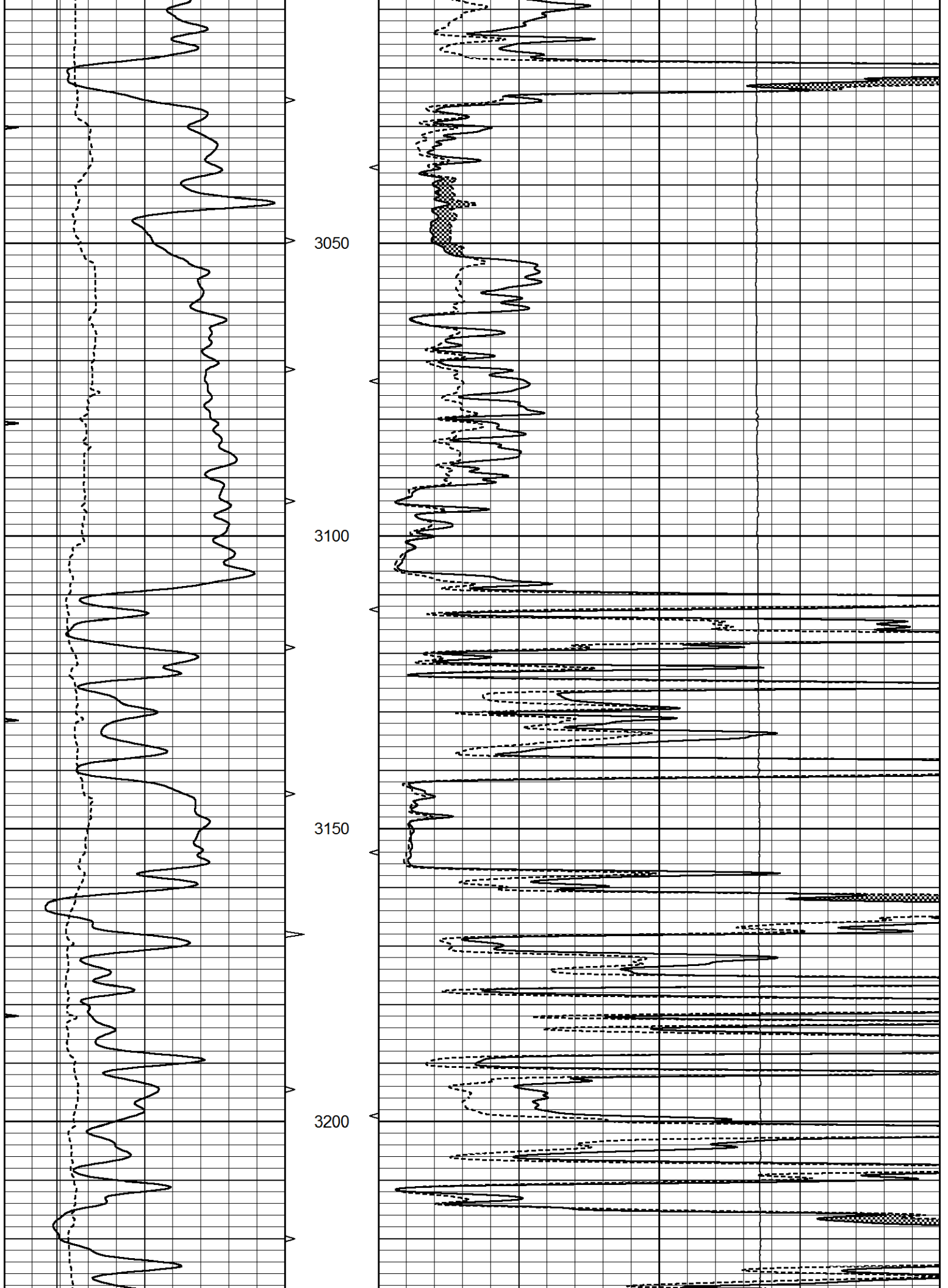


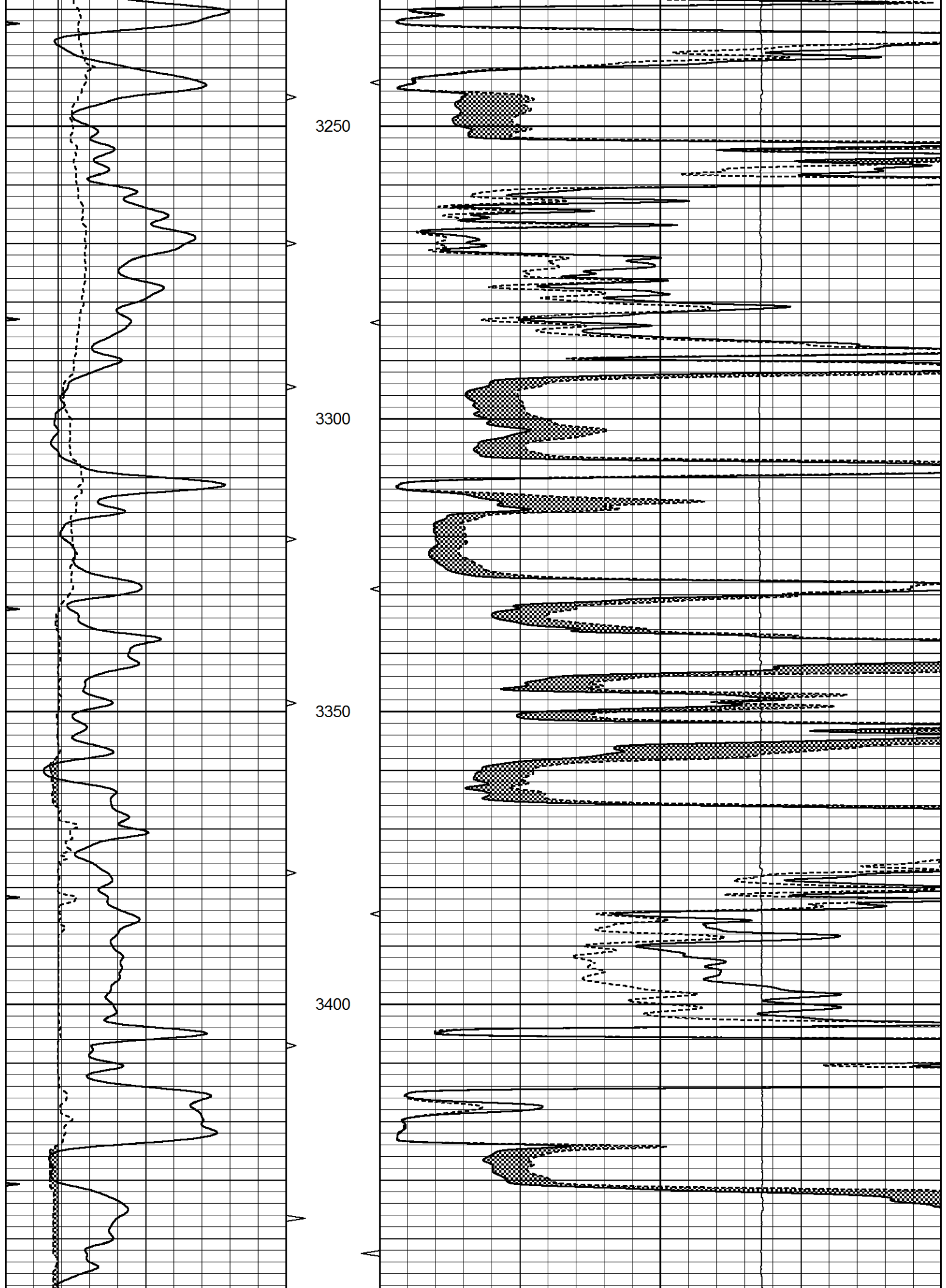


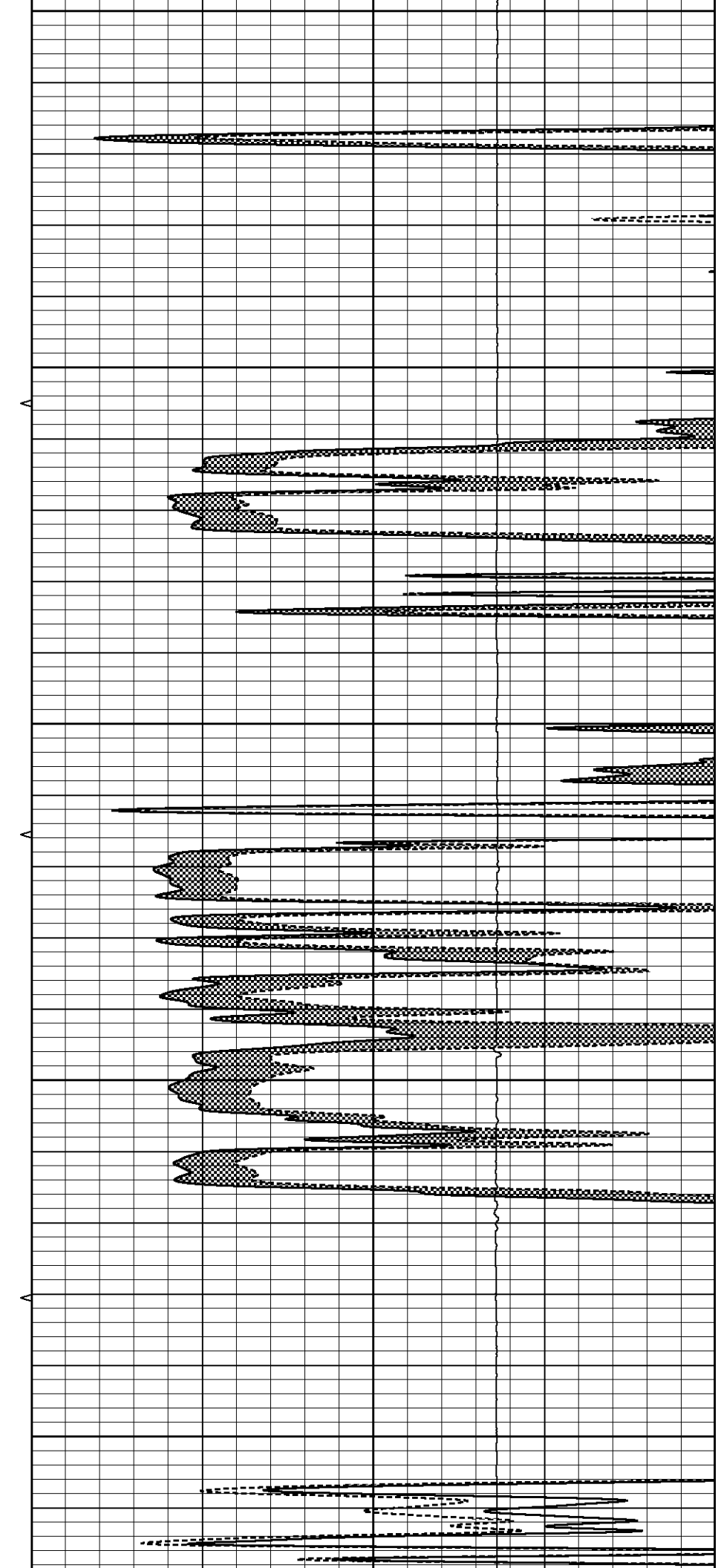
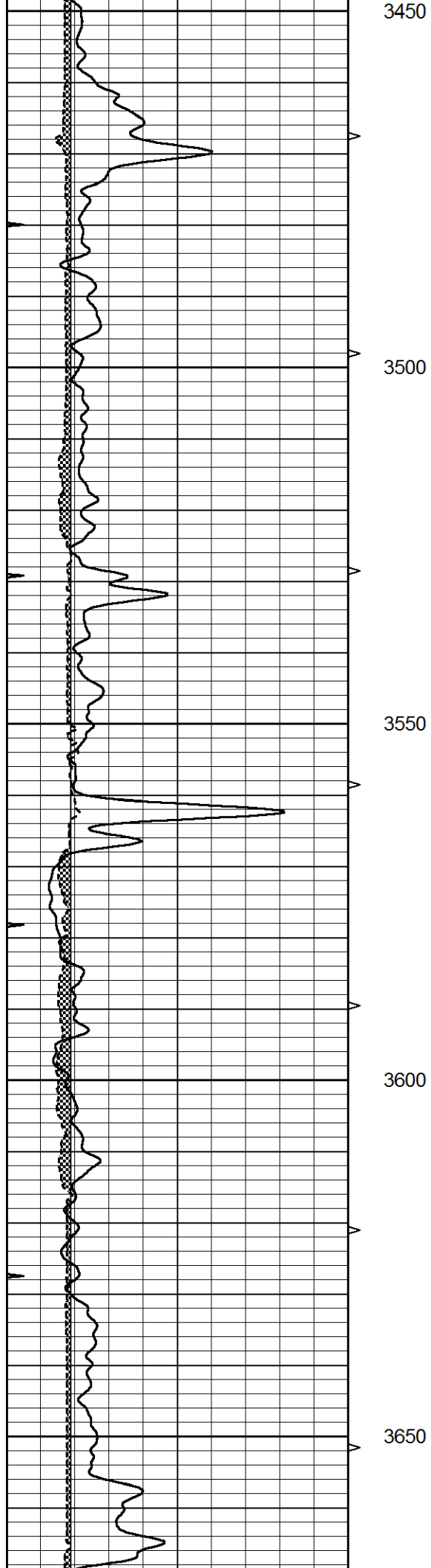


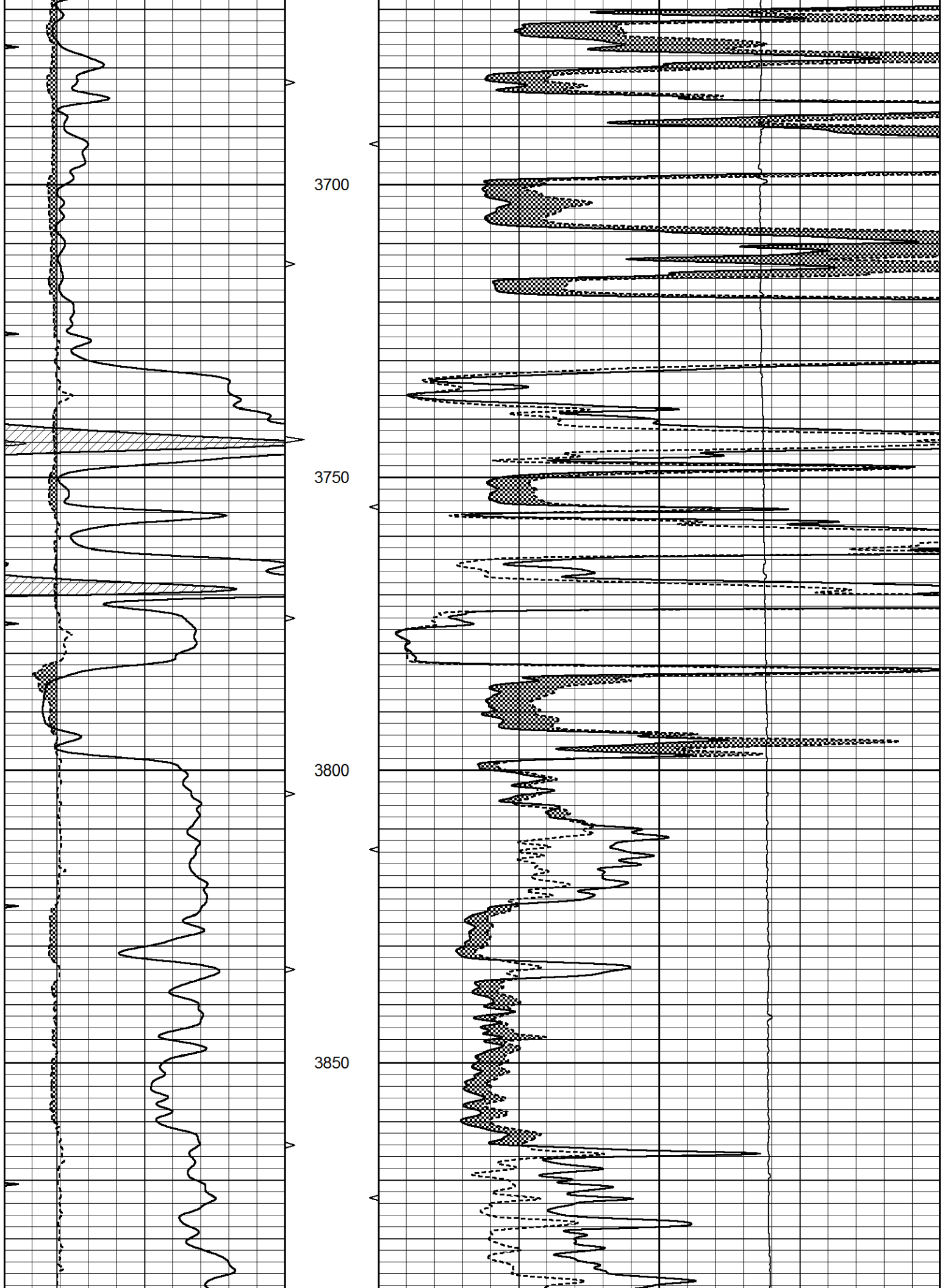


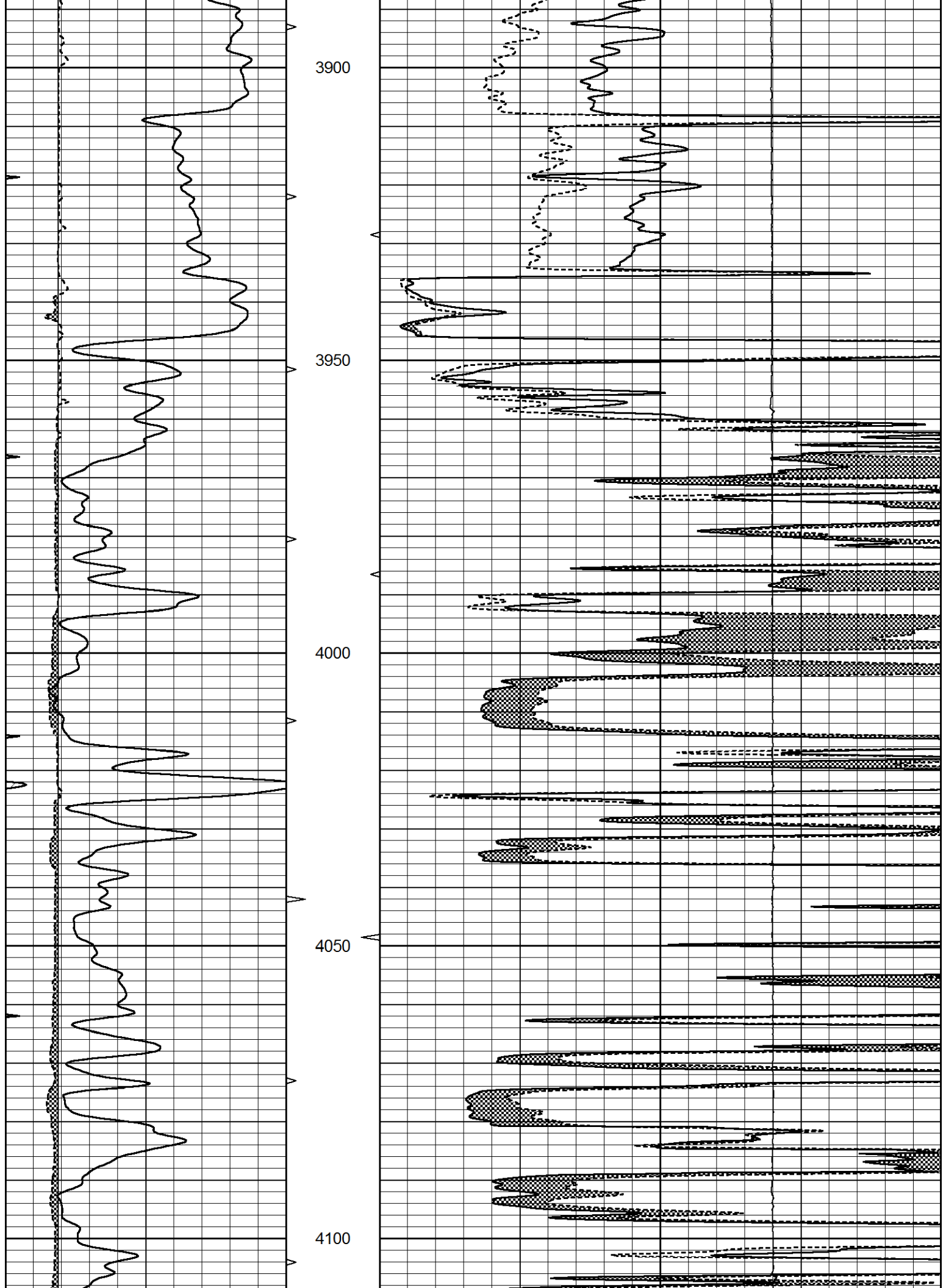


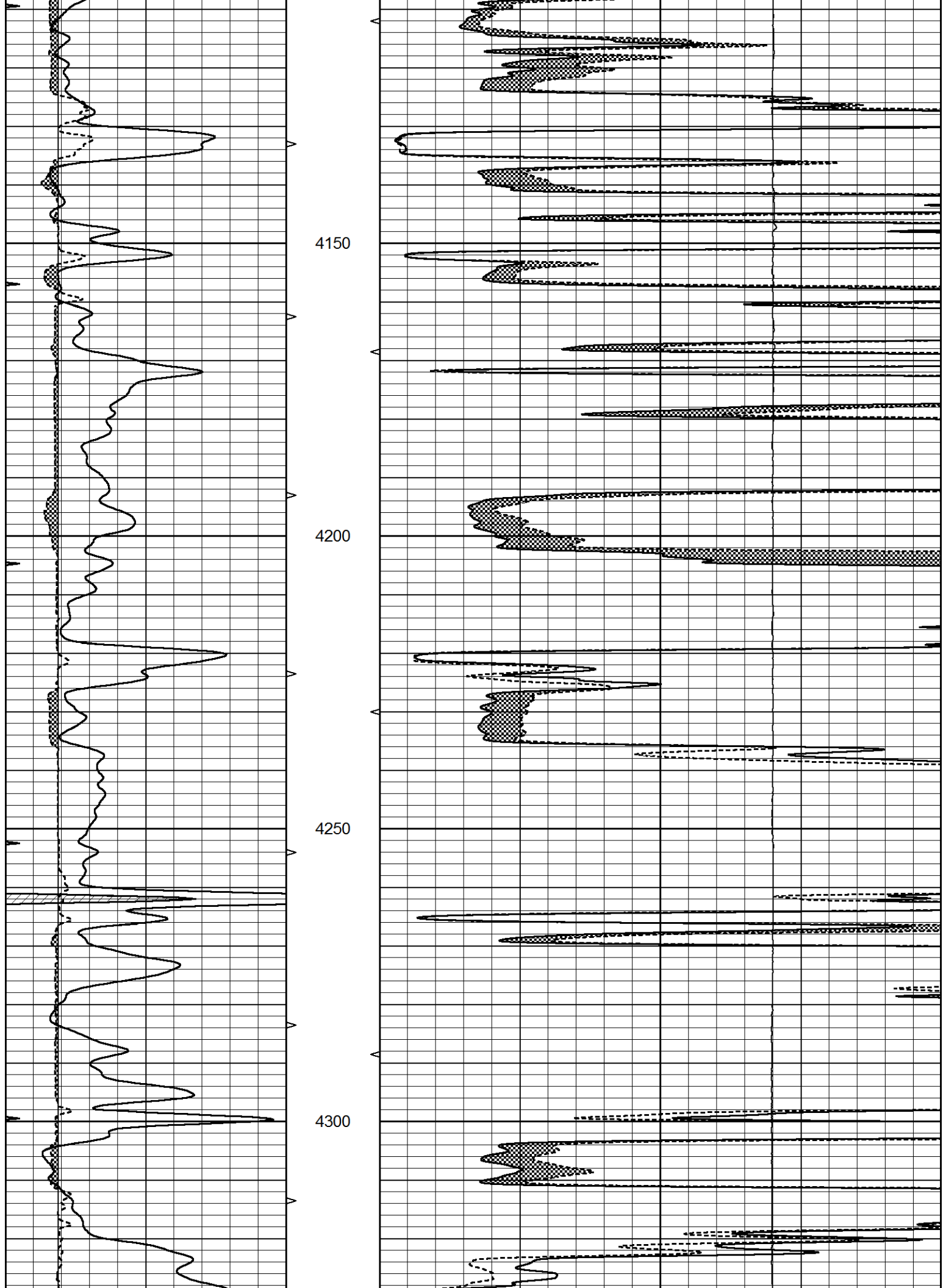


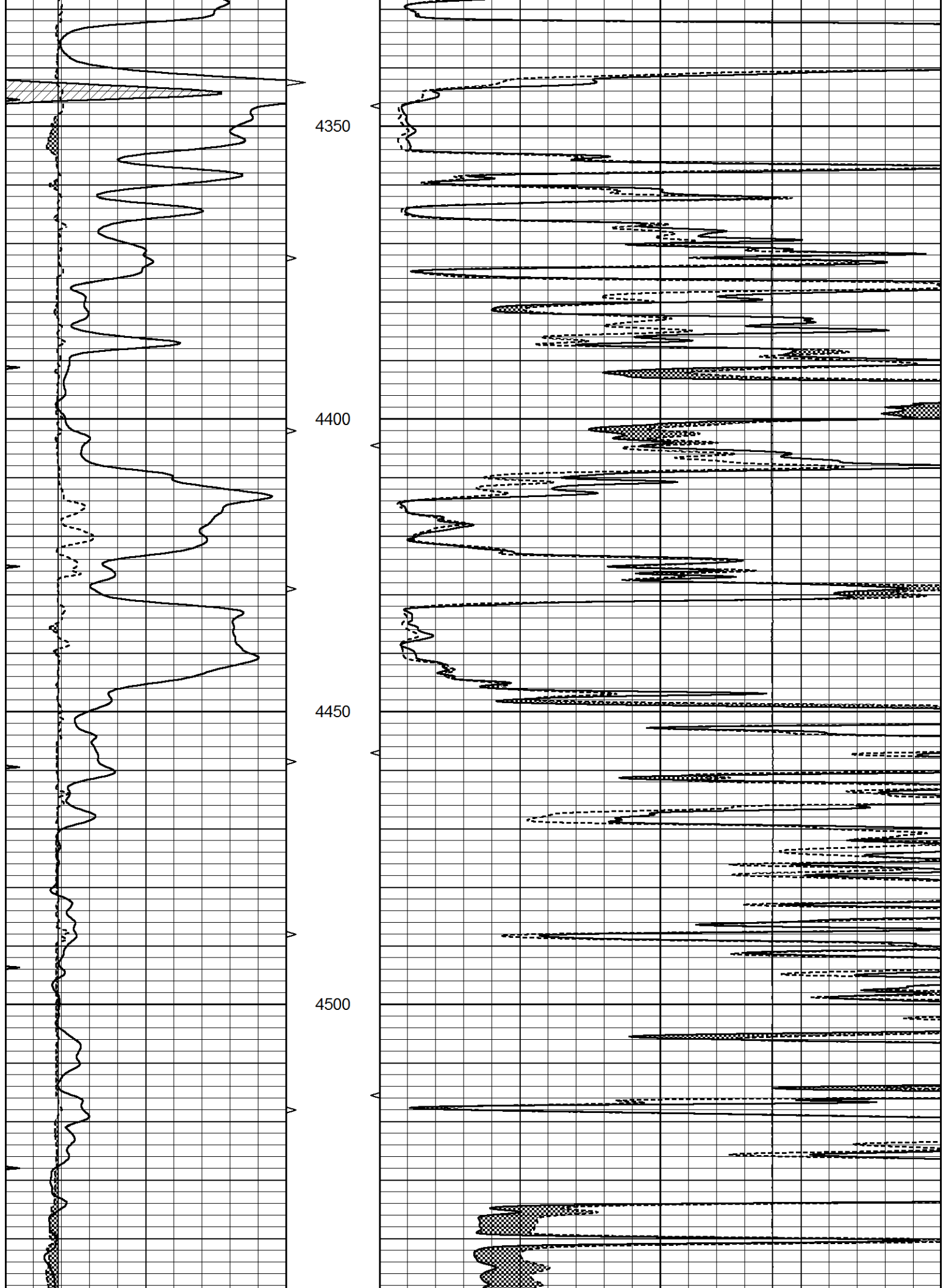


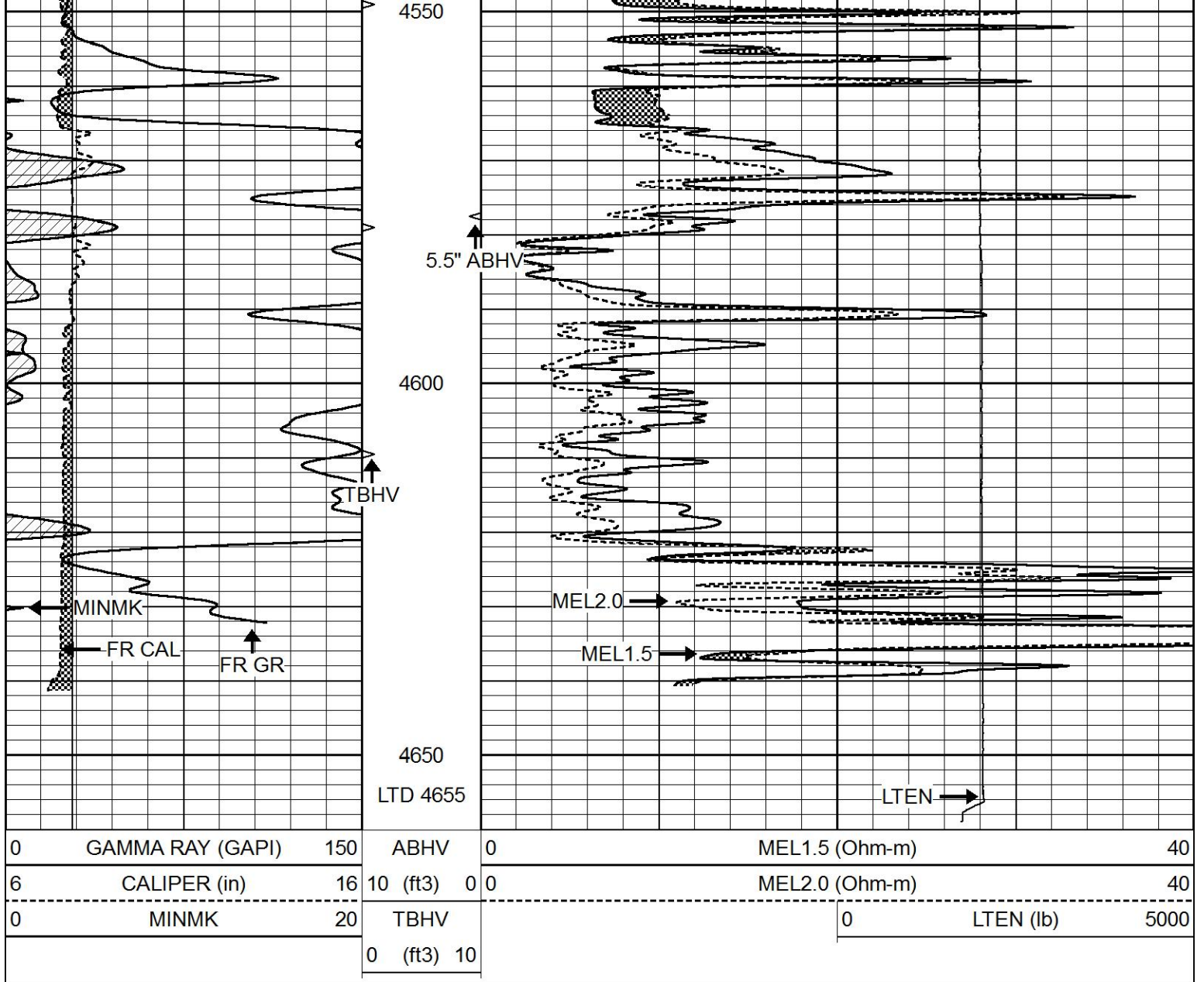








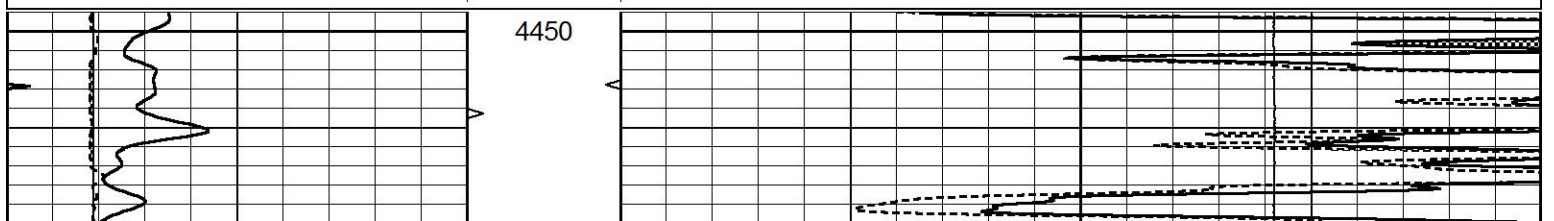


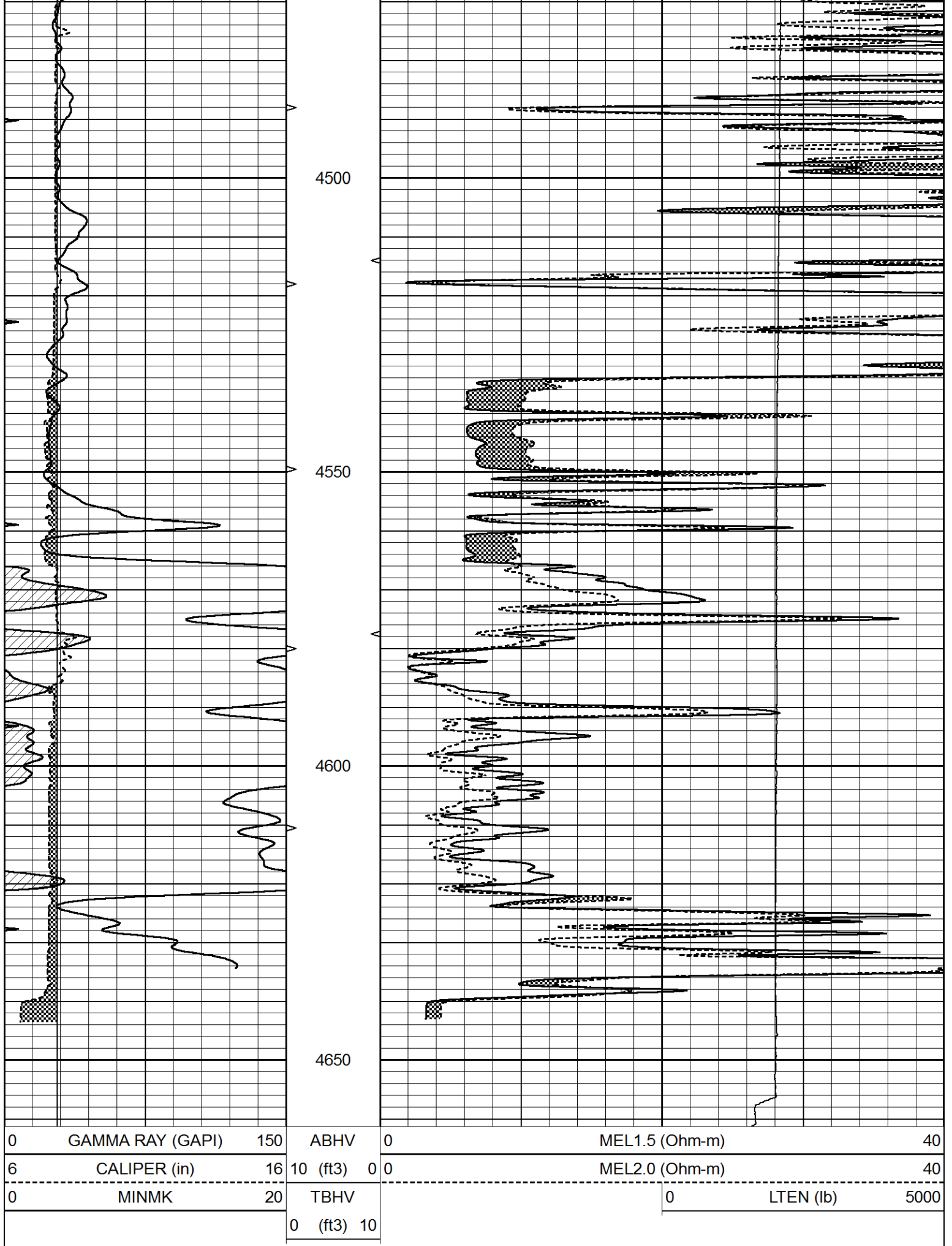


REPEAT SECTION

Database File 9738pe.db
 Dataset Pathname pass5.R
 Presentation Format _micro
 Dataset Creation Sun Nov 23 14:31:42 2025
 Charted by Depth in Feet scaled 1:240

0	GAMMA RAY (GAPI)	150	ABHV	0	MEL1.5 (Ohm-m)	40
6	CALIPER (in)	16	10 (ft3) 0 0	0 0	MEL2.0 (Ohm-m)	40
0	MINMK	20	TBHV		0	LTEN (lb) 5000
			0 (ft3) 10			





Calibration Report

Database File 9738pe.db
 Dataset Pathname pass6.MEL
 Dataset Creation Mon Nov 24 14:55:56 2025

MICRO_USR Calibration Report

Serial Number: 070911
 Tool Model: ProbeL
 Performed: Tue Oct 28 15:12:13 2025

Caliper Calibration: Gain=4.259 Offset=1.600
 References Low Cal High Cal
 8.000 14.000
 Readings 1.427 2.836

1.5" Calibration: Gain=37.000 Offset=-1.000
 References Low Cal High Cal
 0.000 20.000
 Readings 0.005 1.242

2" Calibration: Gain=42.000 Offset=-1.000
 References Low Cal High Cal
 0.000 20.000
 Readings 0.004 1.075

Microlog Calibration Report

Serial-Model: 070911-ProbeL
 Performed: Sat May 14 04:48:25 2022

	Readings			References			Results	
	Zero	Cal		Zero	Cal		m	b
Normal	0.0002	0.4836	V	0.0000	10.0000	Ohm-m	20.6908	-0.0051
Inverse	0.0018	0.6297	V	0.0000	10.0000	Ohm-m	15.9263	-0.0282
Caliper	0.0000	1.0000	V	0.0000	1.0000	in	1.0000	0.0000

Gamma Ray Calibration Report

Serial Number: 070558
 Tool Model: Probe1
 Performed: Wed Feb 12 21:18:24 2025

Calibrator Value: 1.0 GAPI

Background Reading: 0.0 cps
 Calibrator Reading: 1.0 cps

Sensitivity: 0.5200 GAPI/cps