



Sonic Cement
Bond Log

15-151-22617-0000

API No.

Company Prater Oil & Gas Operations, Inc.

Well Kerr Unit #1-23

Field Coats West

County Pratt

State Kansas

Location

2465' FNL & 1505' FWL
SE - SE - SW - NE

Other Services
Mast Trailer

Sec: 23 Twp: 29S Rge: 14W

Elevation

Permanent Datum Ground Level Elevation 1942
Log Measured From Kelly Bushing 11 Ft. Above Perm. Datum
Drilling Measured From Kelly Bushing

K.B. 1953
D.F. 1951
G.L. 1942

Run Number	One	
Date Survey	12/19/2025	
Date Cementing	11/24/2025	
Type Cementing Operation	Primary	
Depth Driller	4655	
Depth Logger	4630	
Logged Interval	4629 to 2400	to
Casing Driller	5.5 @ TD	@
Float Collar -- D.V. Tool	////	////
Squeeze Depth	////	
Amount & Type Cement	////	
Amount & Type Admix	////	
Type Fluid In Hole	Water	
Fluid Level	Full	
Salinity PPM CL	////	
Weight lb/gal -- Vis.	////	////
Approx. Logged Cement Top	2570	
Calculated Cement Top		
Max. Hole Temperature	128	
Tool No.	DIG03	
Spacing Recorded	3-5	
Equipment -- Location	16 Pratt, KS	
Recorded By	N. Schneider	
Witnessed By	Ronald Prater	

<<< Fold Here >>>

All interpretations are opinions based on inferences from electrical or other measurements and we cannot and do not guarantee the accuracy or correctness of any interpretation, and we shall not, except in the case of gross or willful negligence on our part, be liable or responsible for any loss, costs, damages, or expenses incurred or sustained by anyone resulting from any interpretation made by any of our officers, agents or employees. These interpretations are also subject to our general terms and conditions set out in our current Price Schedule.

Comments

Thank you for using Excel Wireline (620) 388-5676
Croft
E on 90th to 40th
S to 95th
1/4 W
N into

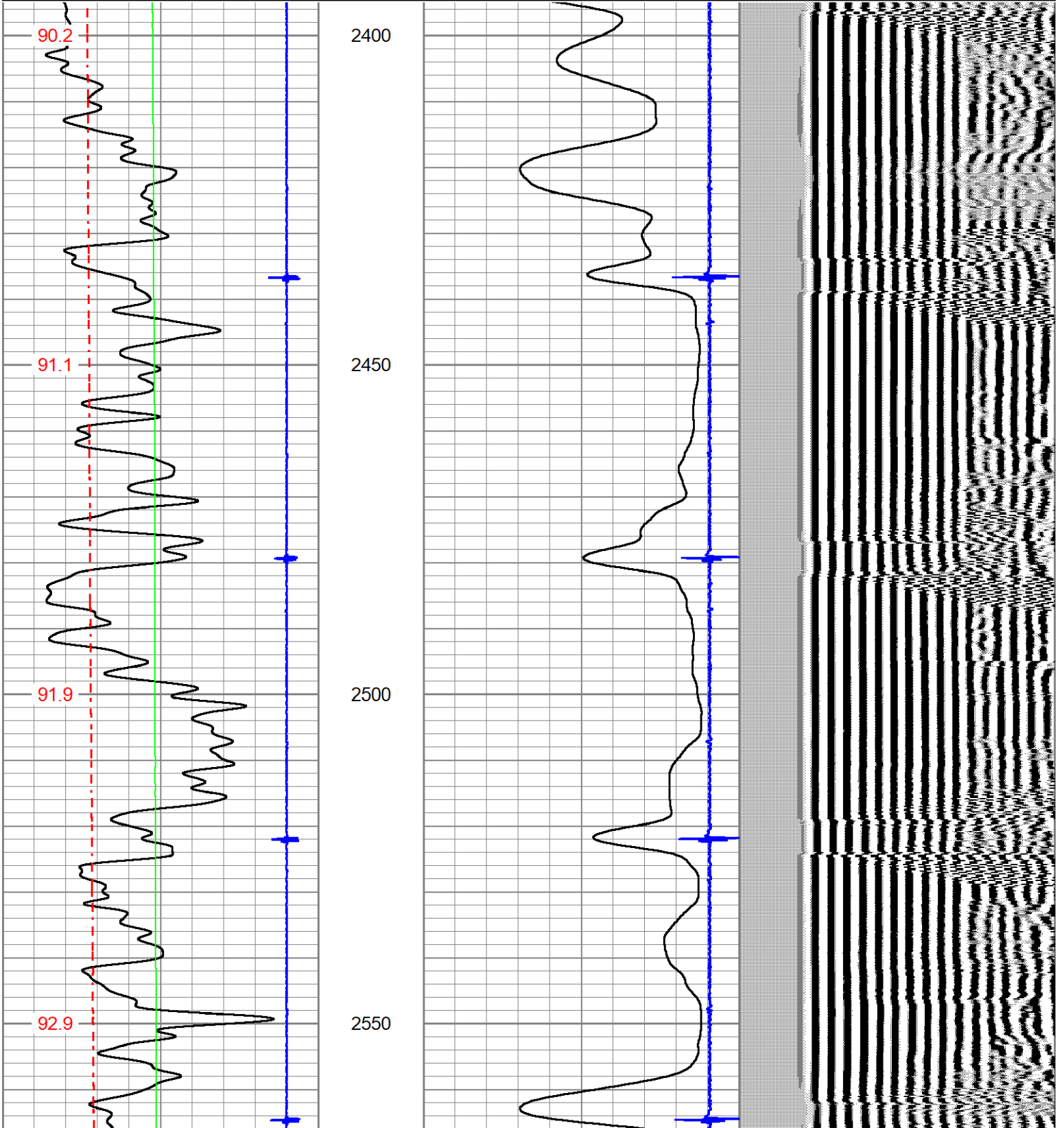


Main Pass

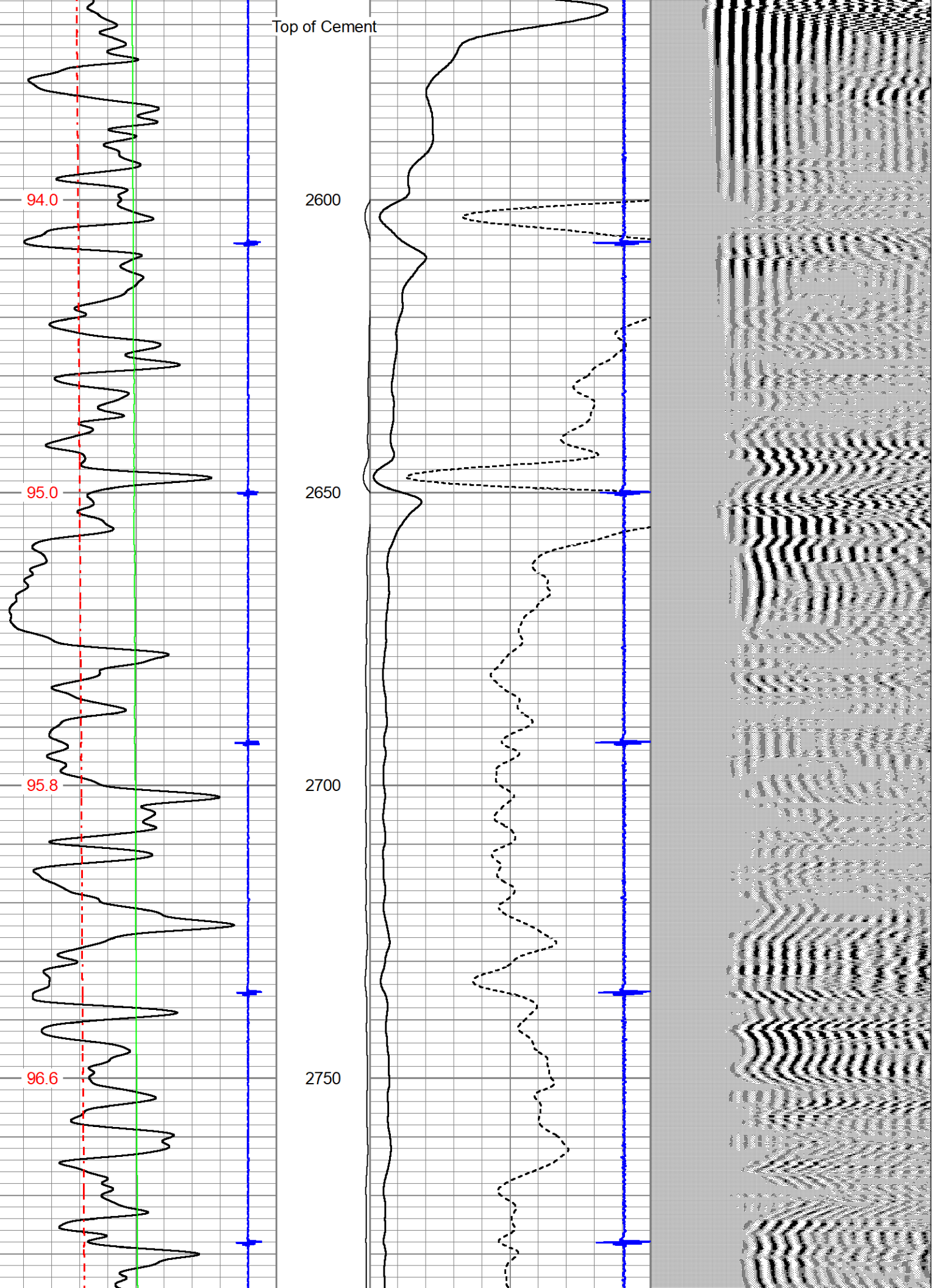
Database File prater_kerr_unit_1_23.db
 Dataset Pathname grcbl/pass5
 Presentation Format prb_cbt
 Dataset Creation Fri Dec 19 15:06:07 2025
 Charted by Depth in Feet scaled 1:240

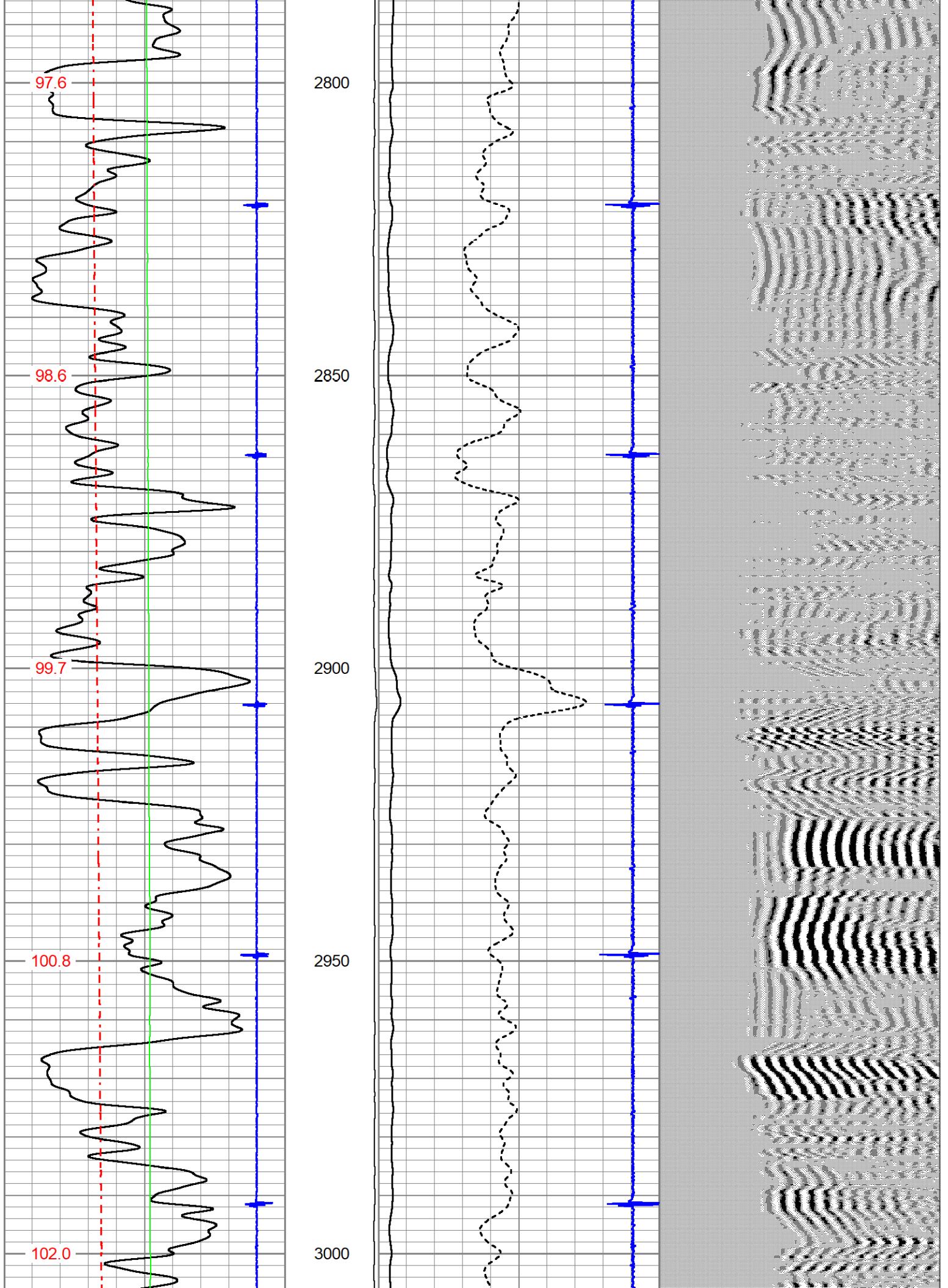
9	CCL\$2	-1	AMP3FT	AMP AMPLITUDE (mV)	200	VDL (usec)	1200
0	Gamma Ray (GAPI)	150	(mV)	AMPLITUDE (mV)			
50	GCT_Temp (degF)	200	-100 10	6	CCL1	-0.6	
0	LTEN (lb)	2000					

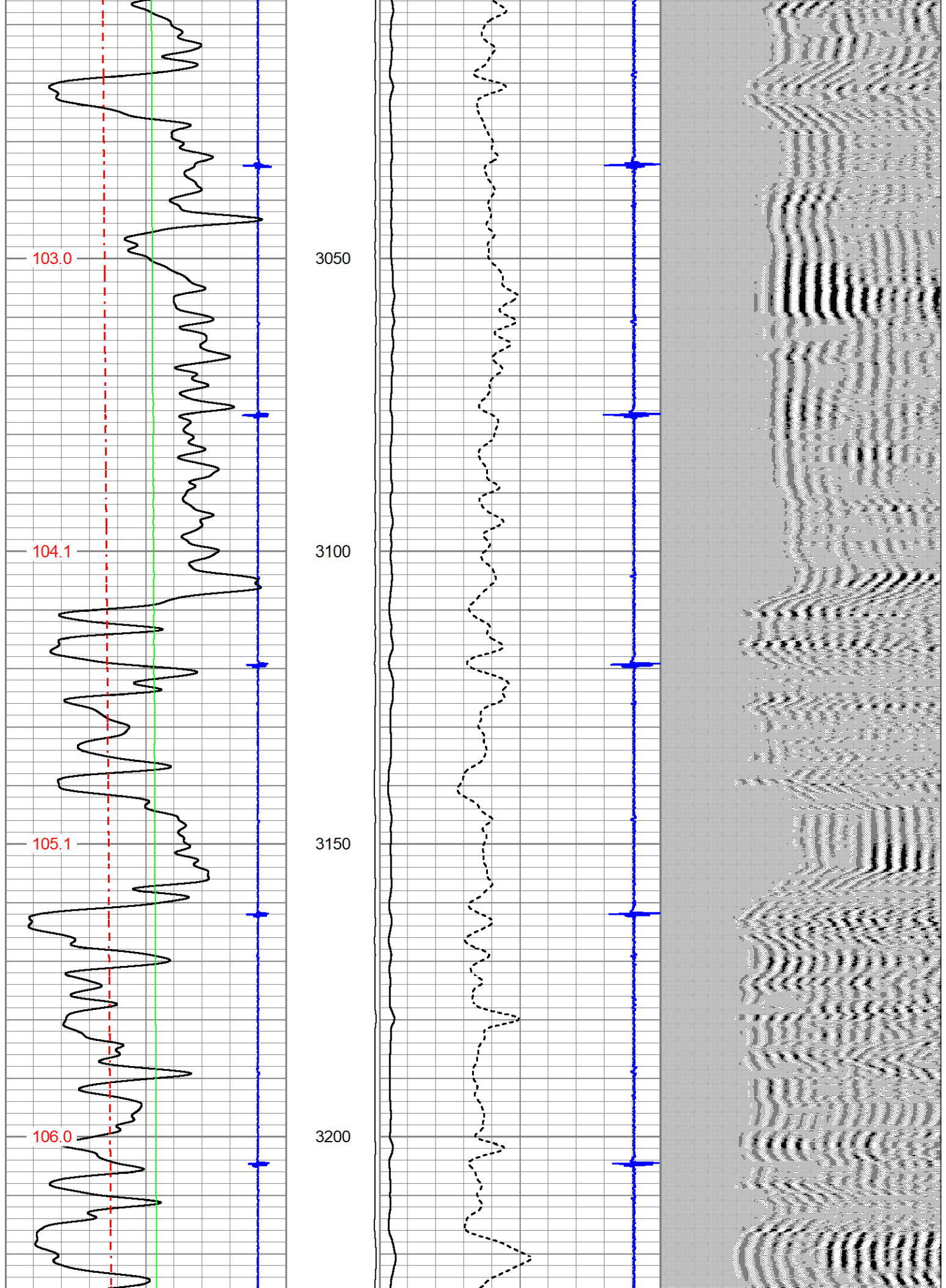
GCT_Temp
(degF)

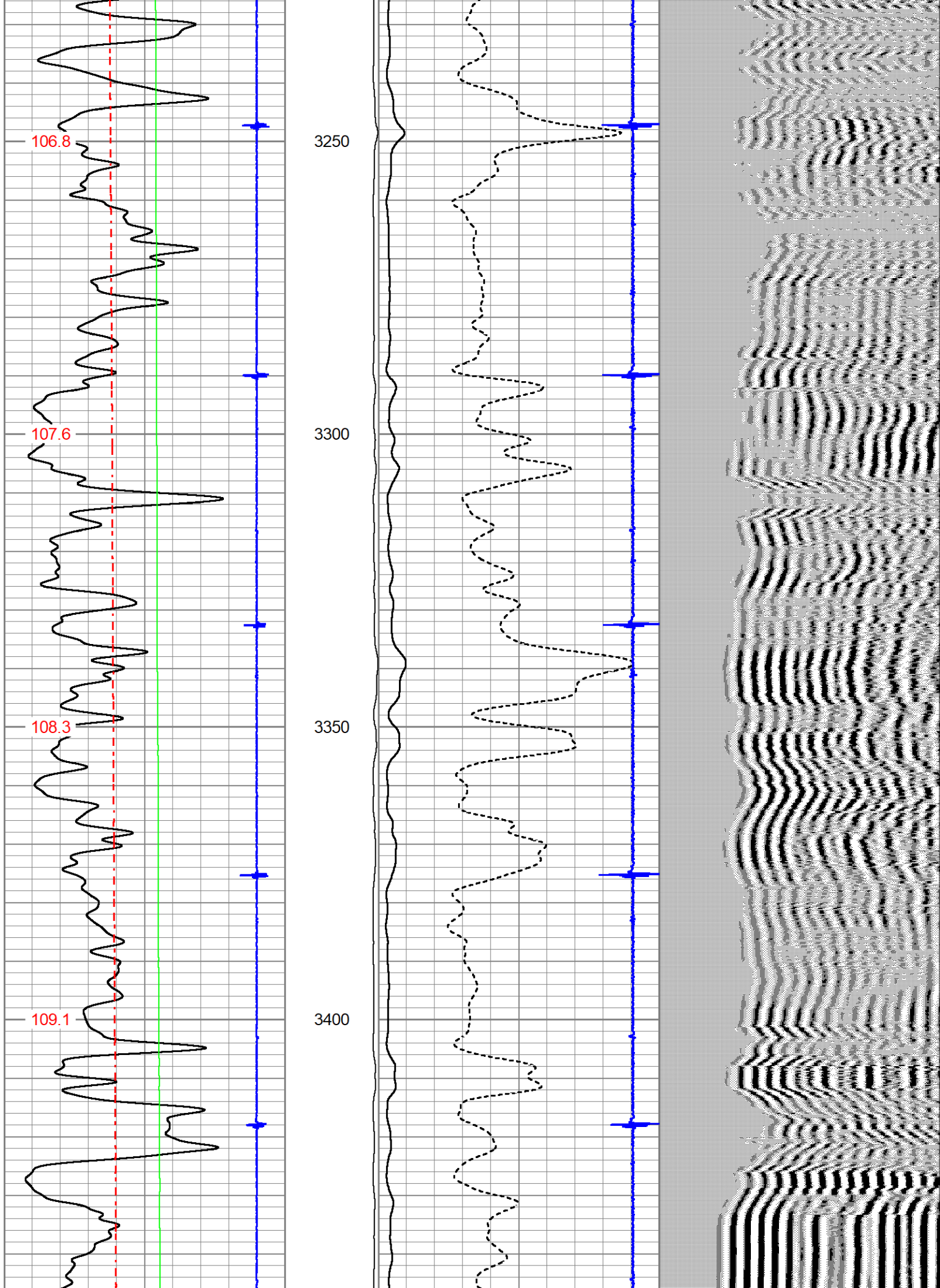


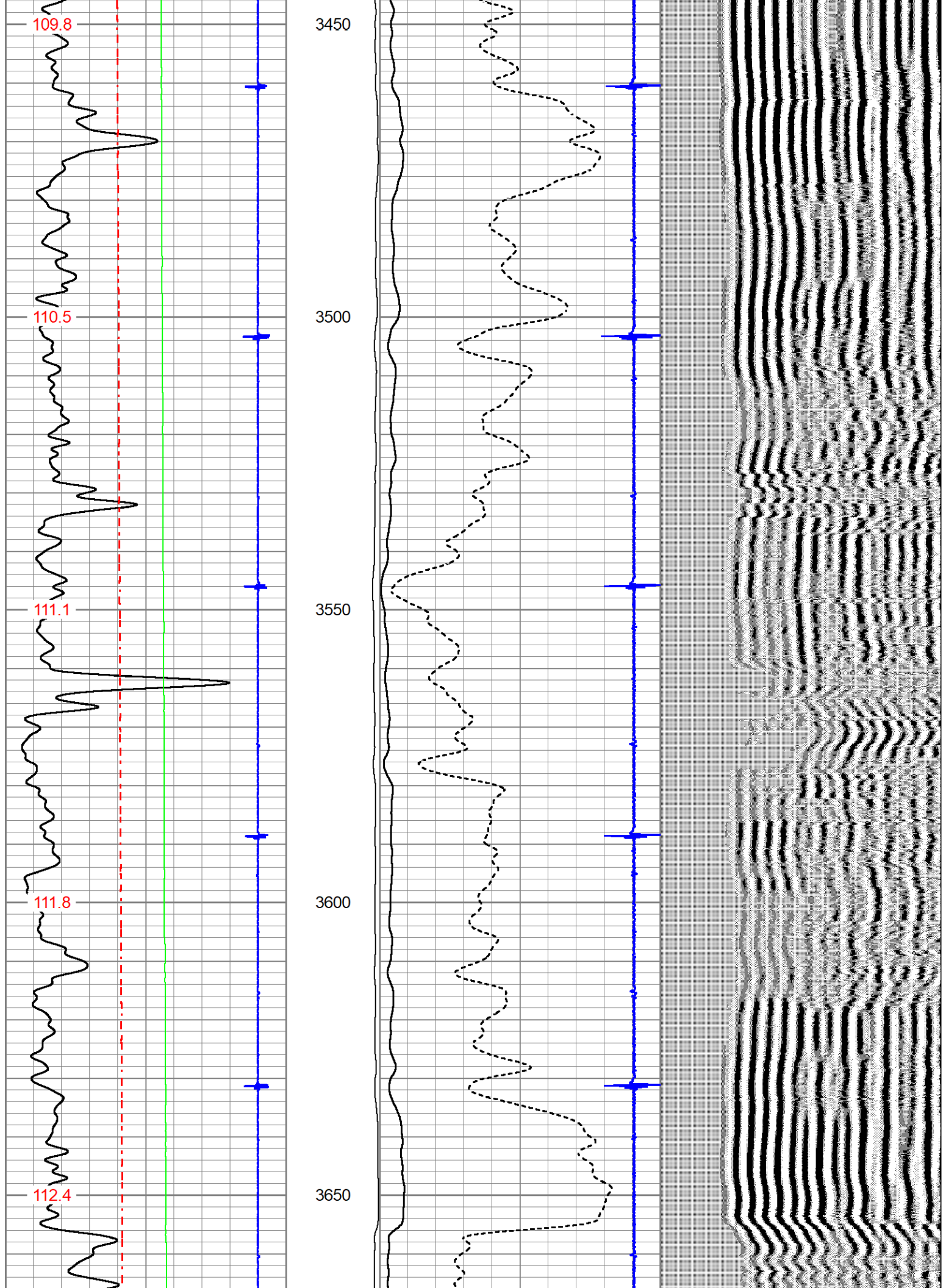
Top of Cement

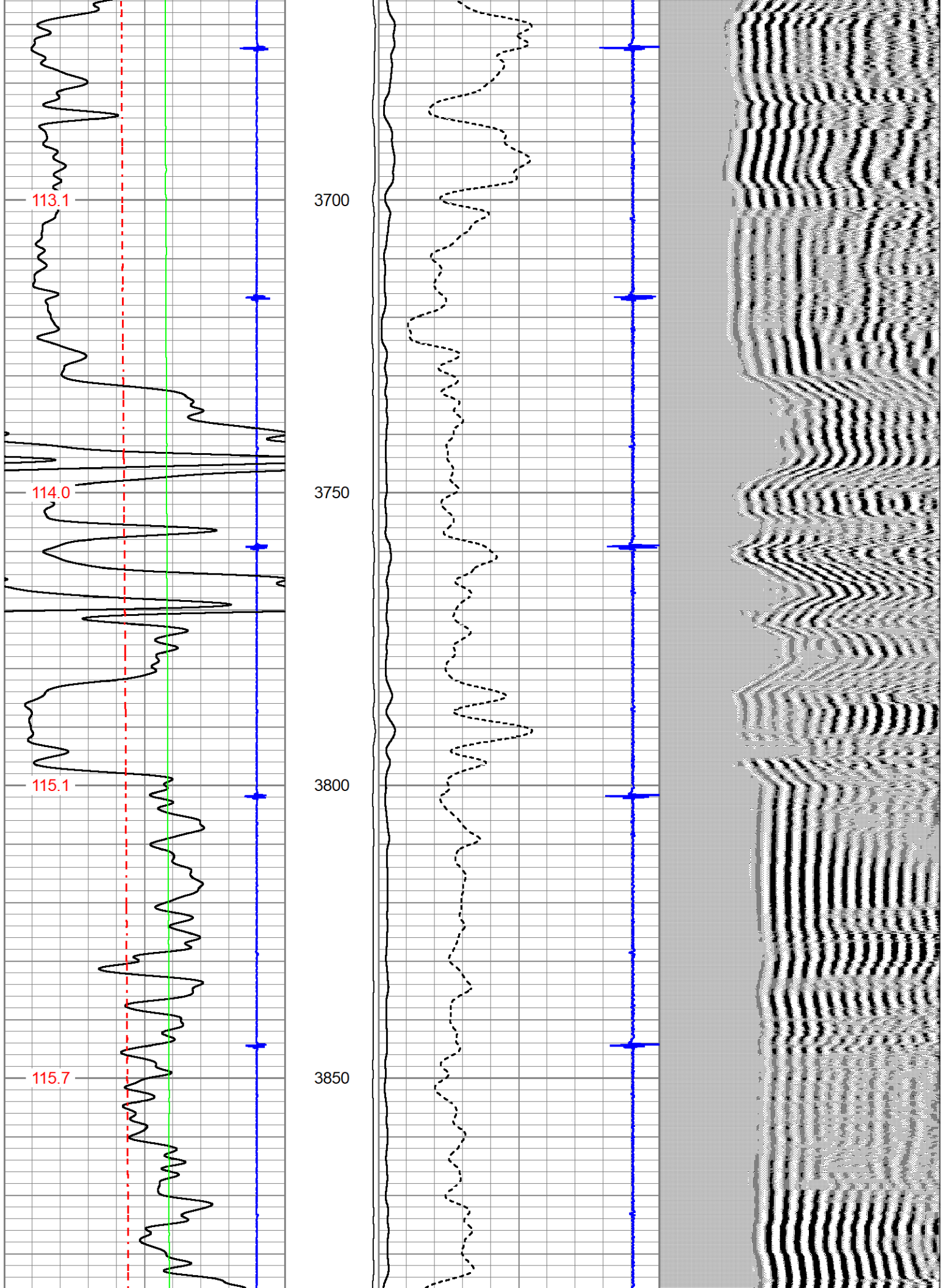


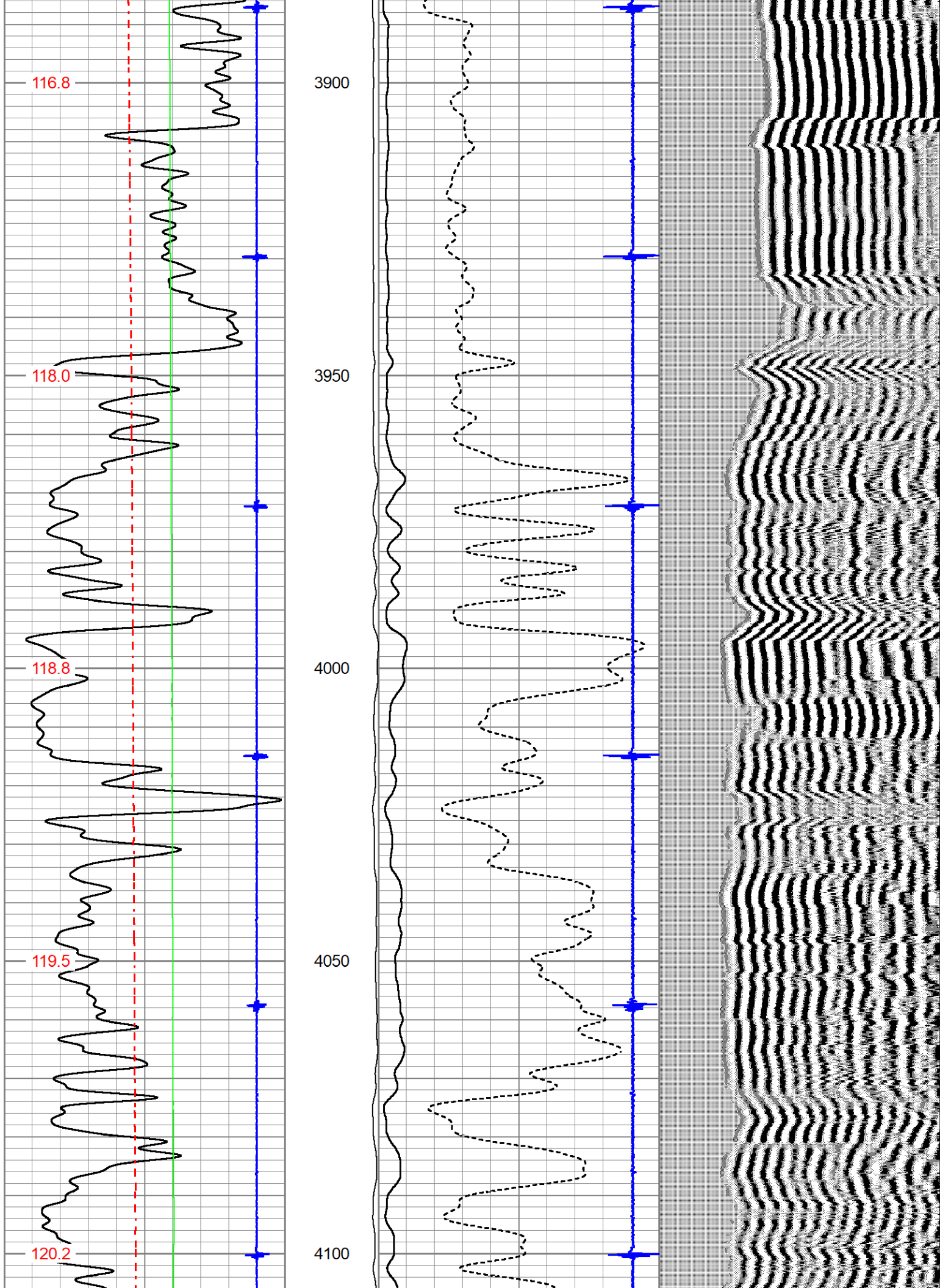


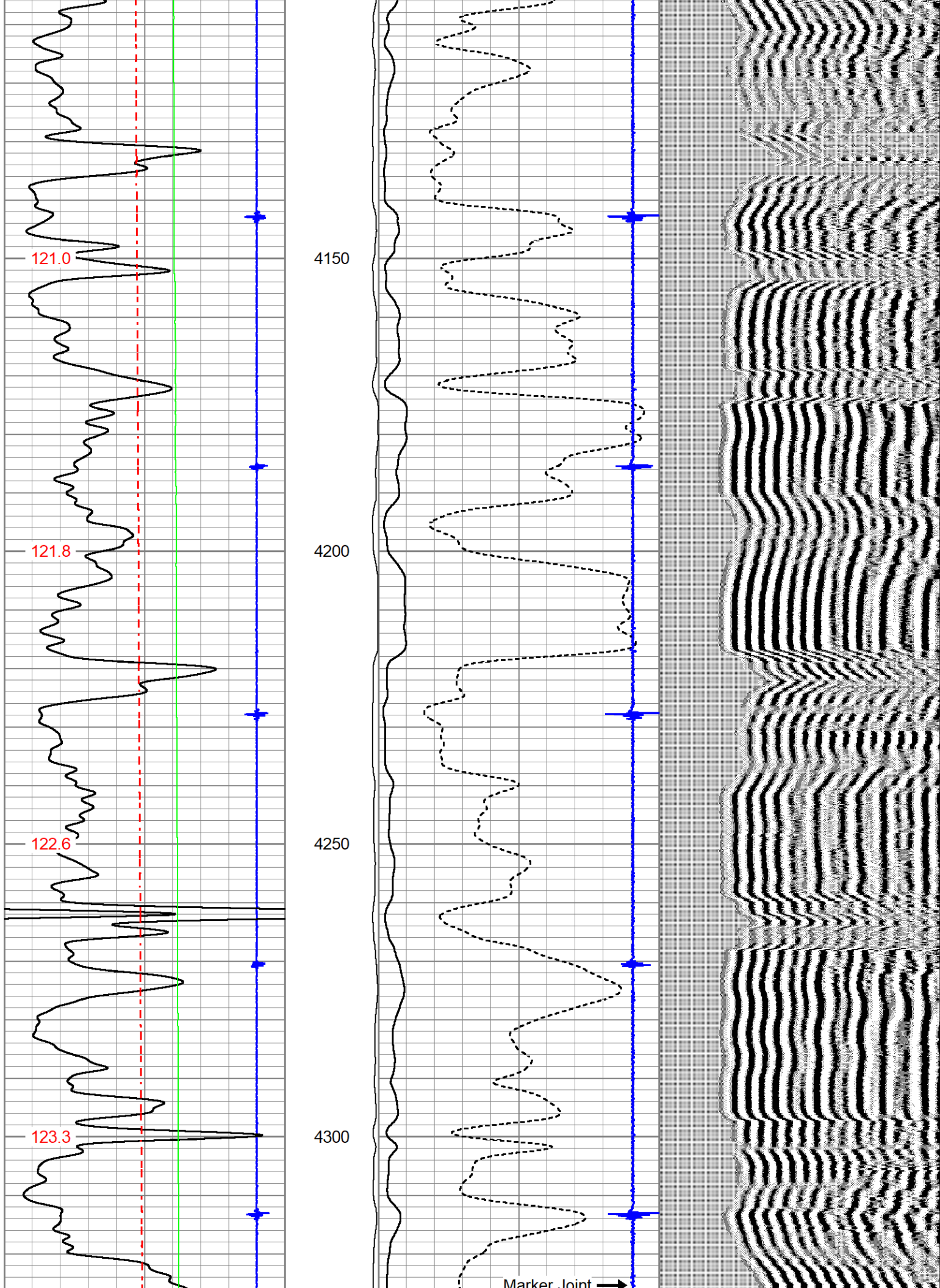


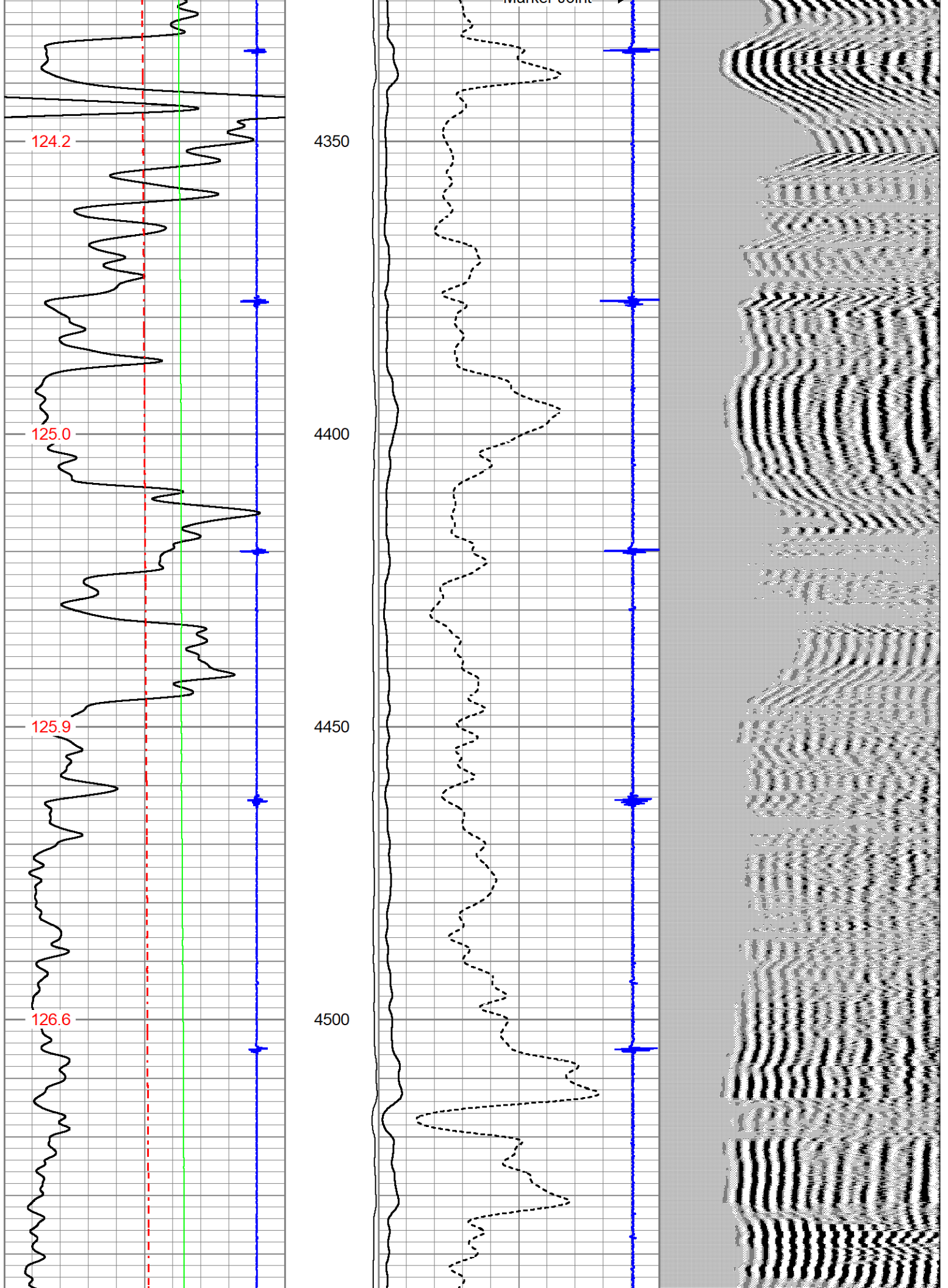


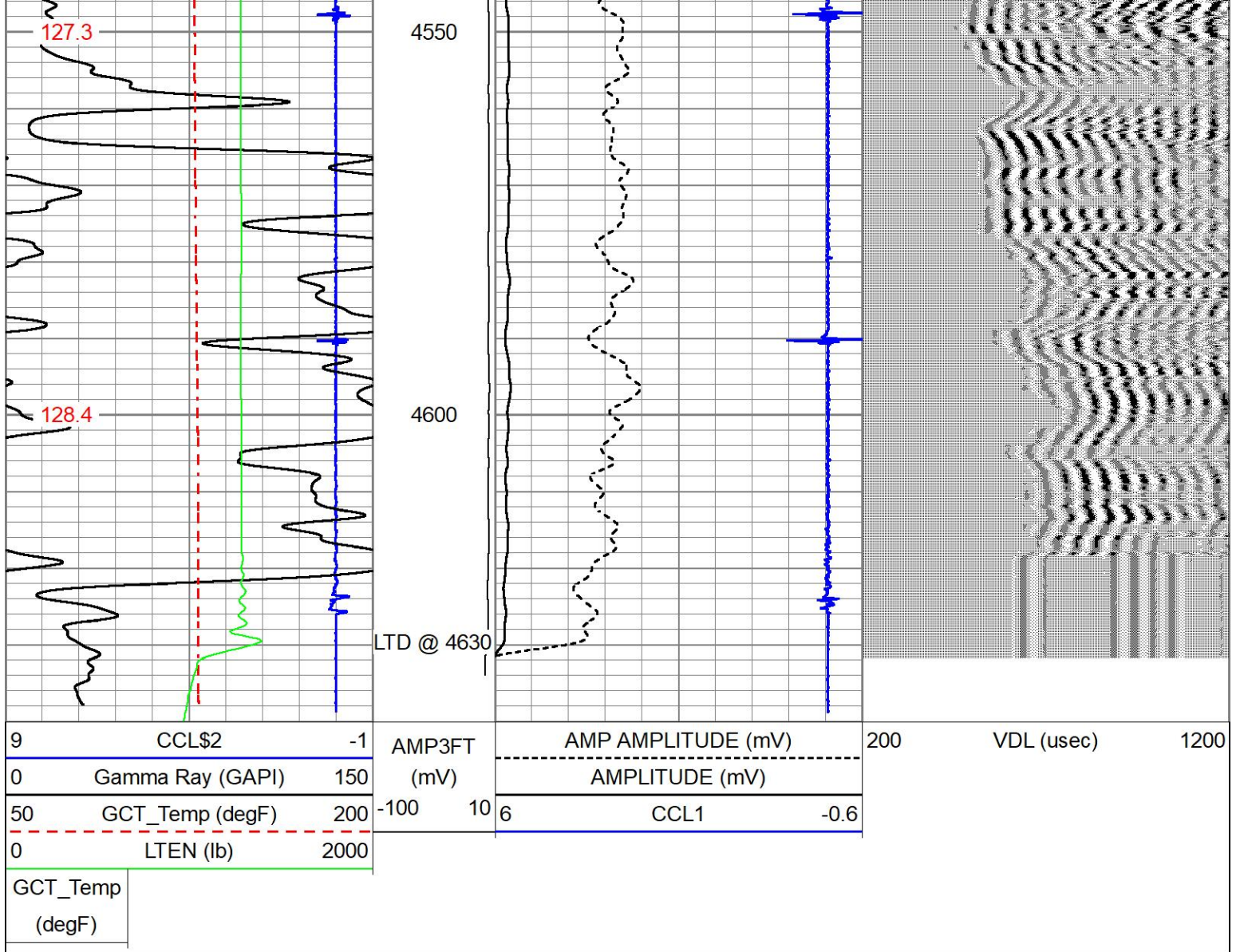











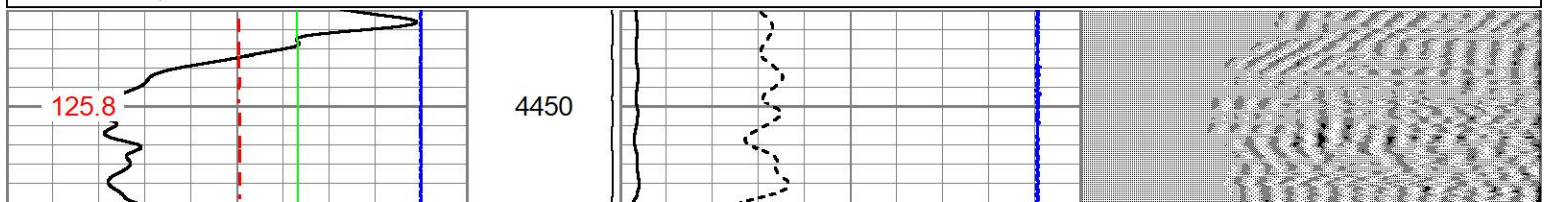


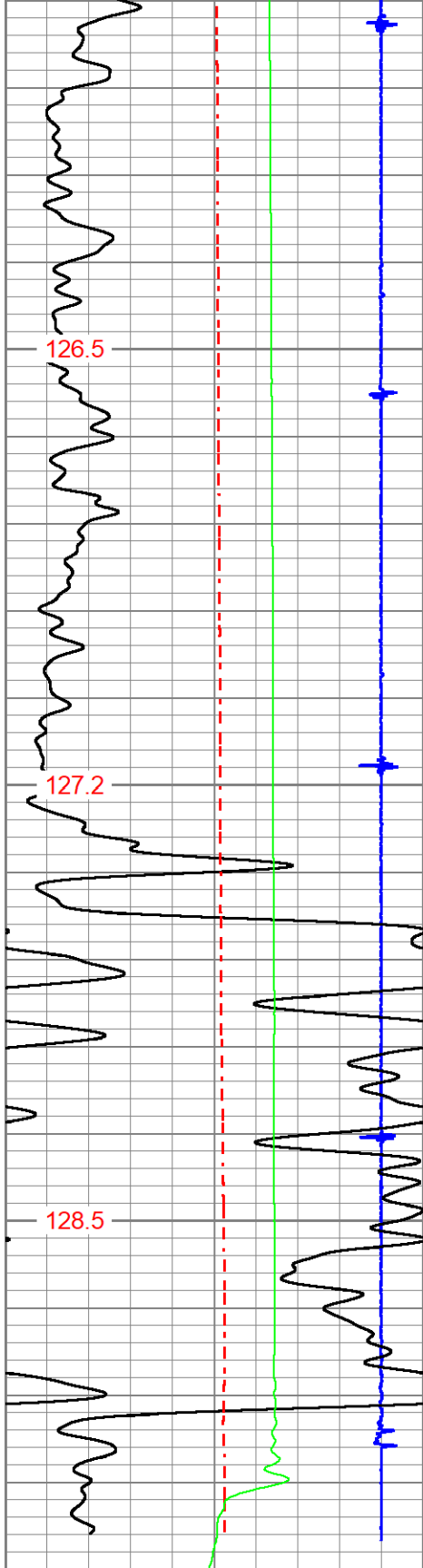


Repeat Section

Database File	prater_kerr_unit_1_23.db						
Dataset Pathname	grcbl/pass4						
Presentation Format	prb_cbt						
Dataset Creation	Fri Dec 19 15:01:19 2025						
Charted by	Depth in Feet scaled 1:240						

9	CCL\$2	-1	AMP3FT	AMP AMPLITUDE (mV)	200	VDL (uSec)	1200
0	Gamma Ray (GAPI)	150	(mV)	-----			
50	GCT_Temp (degF)	200	-100 10	AMPLITUDE (mV)			
0	LTEN (lb)	2000	6	CCL1	-0.6		
GCT_Temp (degF)							

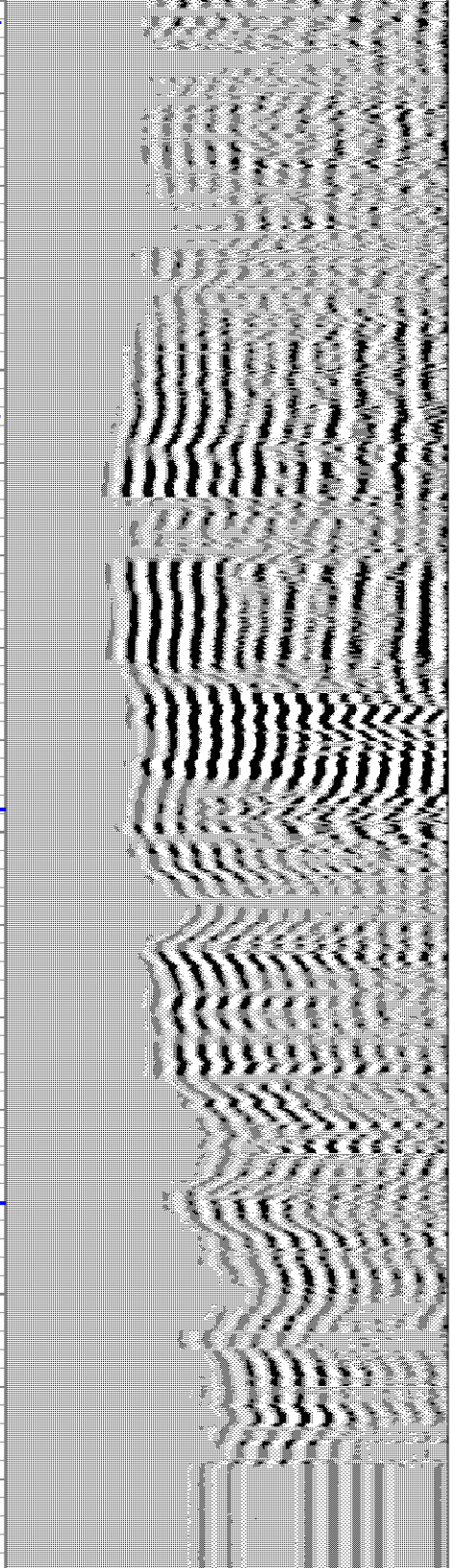
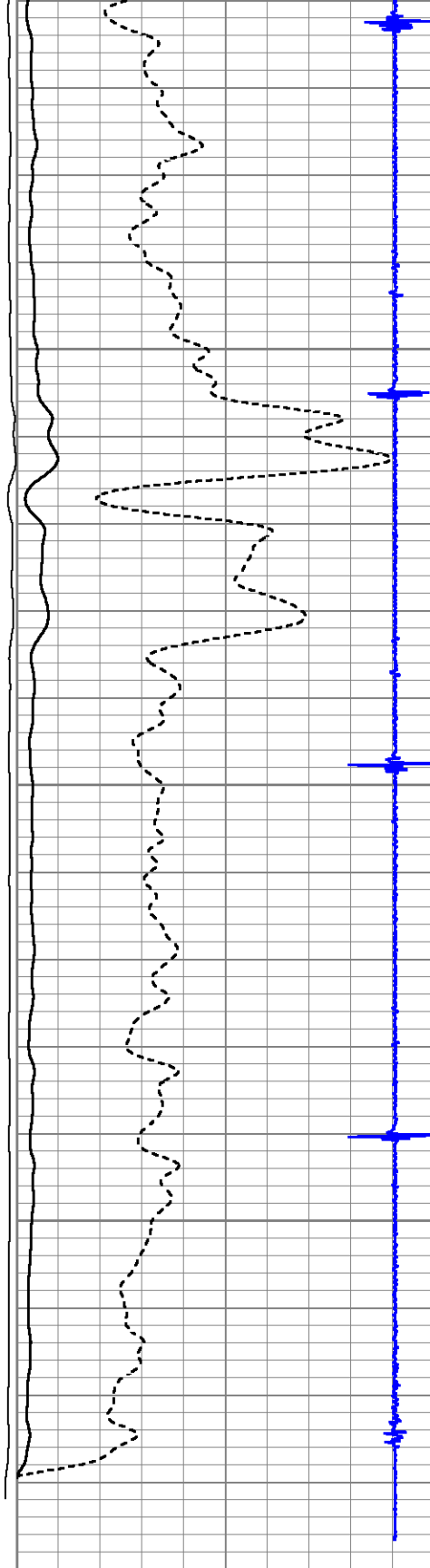




4500

4550

4600



9	CCL\$2	-1
0	Gamma Ray (GAPI)	150
50	GCT_Temp (degF)	200
0	LTEN (lb)	2000

AMP3FT (mV)	AMP AMPLITUDE (mV)	200
-100 10	AMPLITUDE (mV)	
	CCL1	-0.6

VDL (usec)	1200
------------	------

GCT_Temp (degF)