

# SONIC LOG

Company PRATER OIL & GAS OPERATIONS, INC.  
 Well KERR UNIT #1-23  
 Field COATS WEST  
 County PRATT  
 State KANSAS

Company PRATER OIL & GAS OPERATIONS, INC.  
 Well KERR UNIT #1-23  
 Field COATS WEST  
 County PRATT State KANSAS

Location: API #: 15-151-22617-0000  
 2465 FNL & 1505 FEL  
 SE - SE - SW - NE  
 SEC 23 TWP 29S RGE 14W  
 Permanent Datum GROUND LEVEL Elevation 1942  
 Log Measured From KELLY BUSHING 11' A.G.L.  
 Drilling Measured From KELLY BUSHING

Other Services  
 CDL/CNL/PE  
 DIL/MEL  
 Elevation  
 K.B. 1953  
 D.F. 1951  
 G.L. 1942

Date	11/23/25
Run Number	TWO
Depth Driller	4655
Depth Logger	4655
Bottom Logged Interval	4647
Top Log Interval	1950
Casing Driller	8.625 @ 475
Casing Logger	475
Bit Size	7.875
Type Fluid in Hole	CHEMICAL MUD
Density / Viscosity	9.1/60
pH / Fluid Loss	10.5/8.8
Source of Sample	FLOWLINE
Rm @ Meas. Temp	1.05 @ 69F
Rmf @ Meas. Temp	.788 @ 69F
Rmc @ Meas. Temp	1.26 @ 69F
Source of Rmf / Rmc	MEASUREMENT
Rm @ BHT	.594 @ 122F
Time Circulation Stopped	4 HOURS
Time Logger on Bottom	12:00 P.M.
Maximum Recorded Temperature	122F
Equipment Number	3802
Location	HAYS, KANSAS
Recorded By	COLE ROBBEN
Witnessed By	SCOTT ALBERG
	TJ DREILING

<<< Fold Here >>>

All interpretations are opinions based on inferences from electrical or other measurements and we cannot and do not guarantee the accuracy or correctness of any interpretation, and we shall not, except in the case of gross or willful negligence on our part, be liable or responsible for any loss, costs, damages, or expenses incurred or sustained by anyone resulting from any interpretation made by any of our officers, agents or employees. These interpretations are also subject to our general terms and conditions set out in our current Price Schedule.

### Comments

THANK YOU FOR USING ELI WIRELINE SERVICES, HAYS, KS. ( 785 ) 628-6395

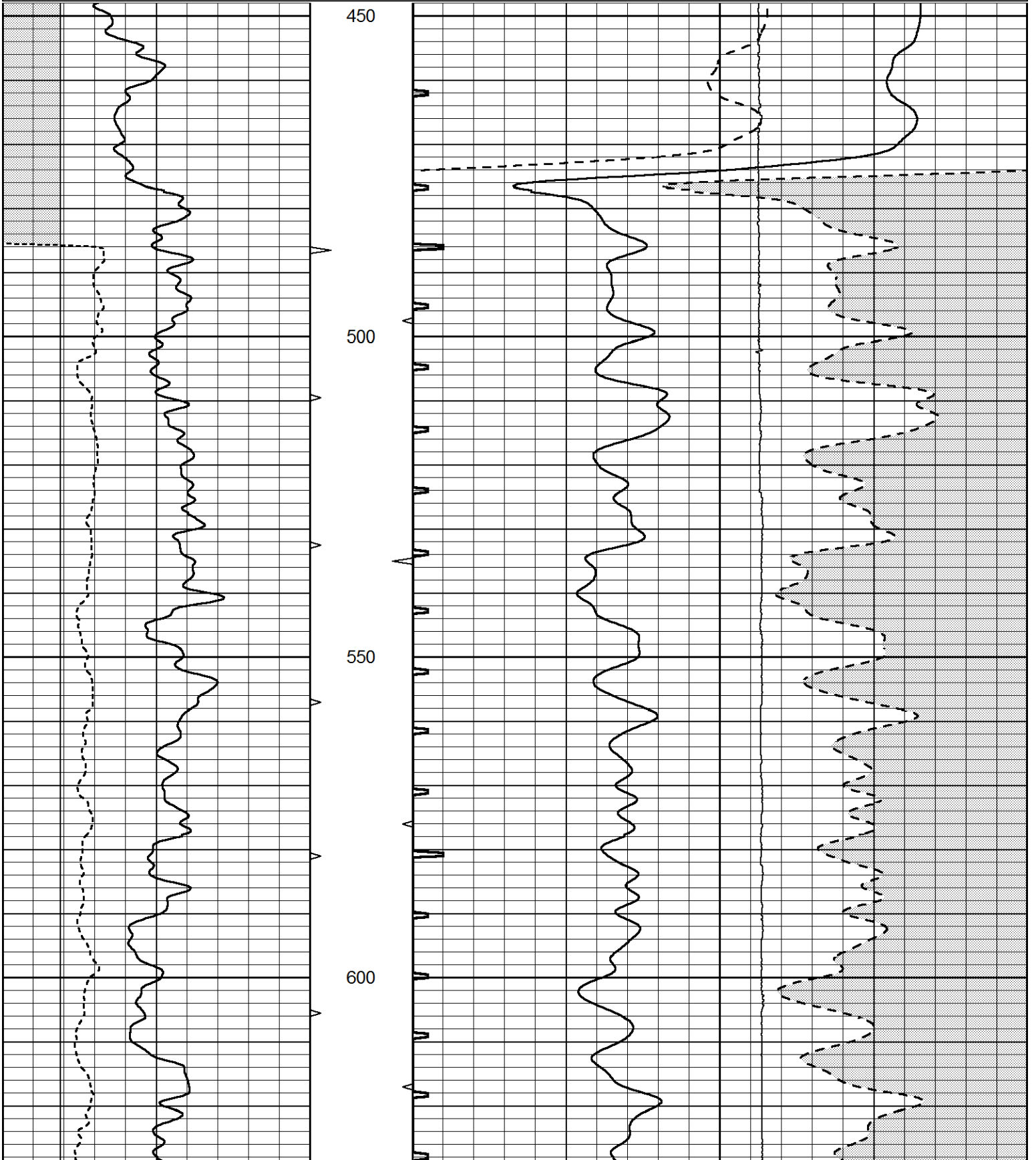
DIRECTIONS:  
 FROM COATS, KANSAS - 1 MILE EAST ON SW 90TH, SOUTH 1/2 MILE ON SW 40TH, WEST ON SW 95TH 3/8TH MILE, NORTH INTO

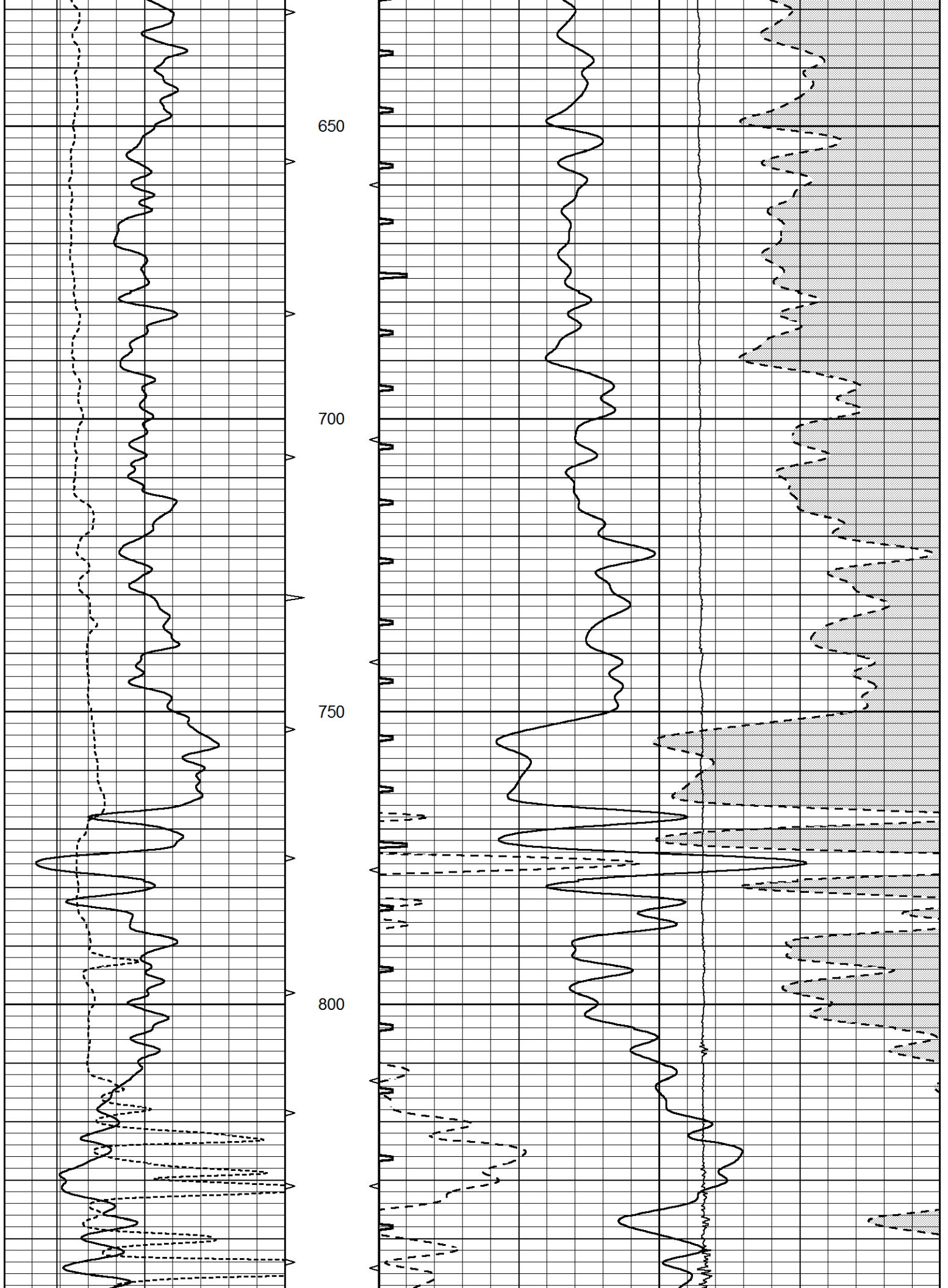


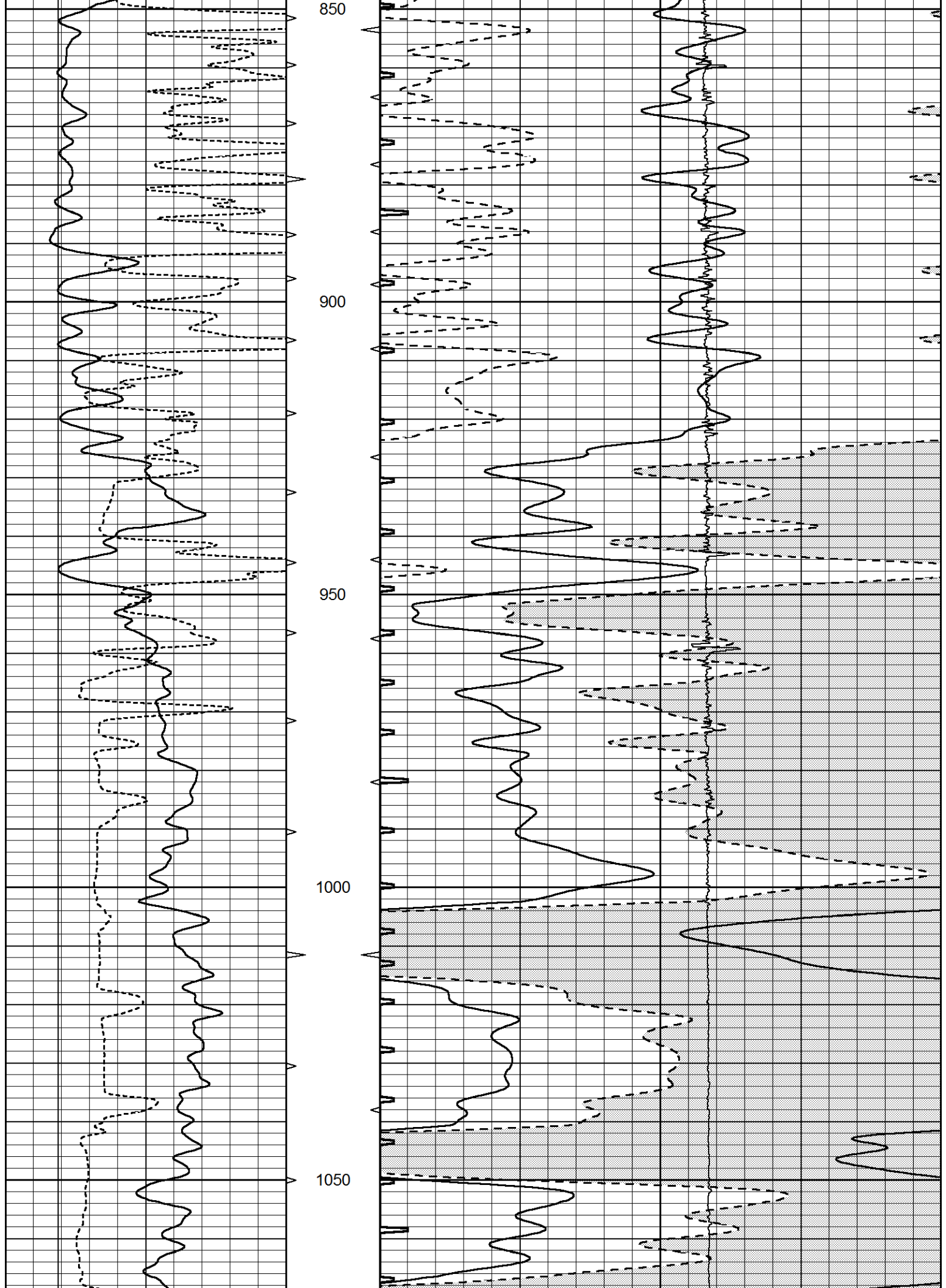
# MAIN SECTION

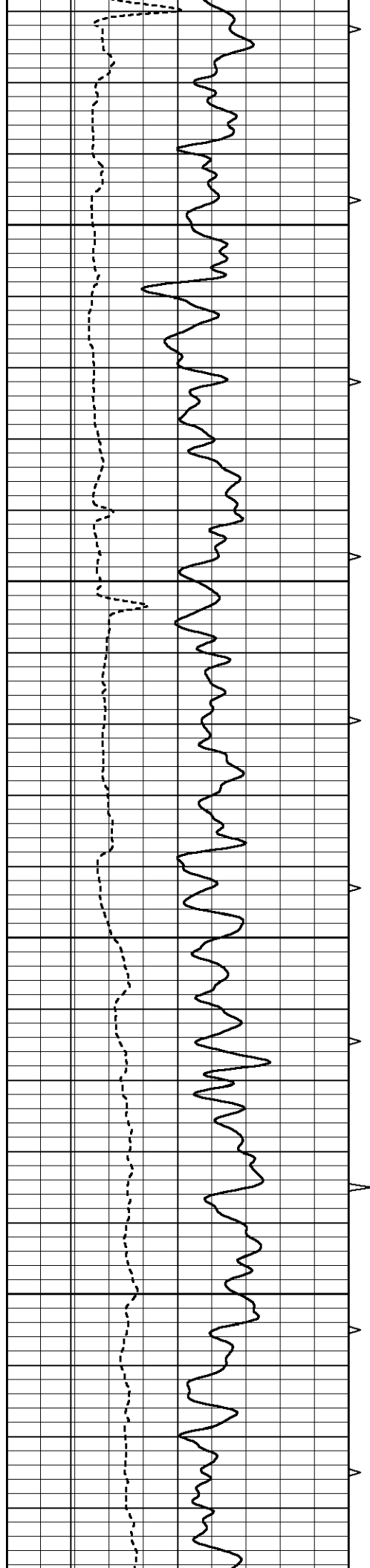
Database File 9738pe.db  
 Dataset Pathname pass6.SON  
 Presentation Format \_slt  
 Dataset Creation Mon Nov 24 15:10:11 2025  
 Charted by Depth in Feet scaled 1:240

0	GAMMA RAY (GAPI)	150	ABHV	140	DELTA TIME (usec/ft)		40
6	CALIPER (in)	16	10 (ft3)	0	SONIC POROSITY (pu)		-10
			TBHV	0	ITT (msec)	20	LTEN (lb)
			0 (ft3)	10			







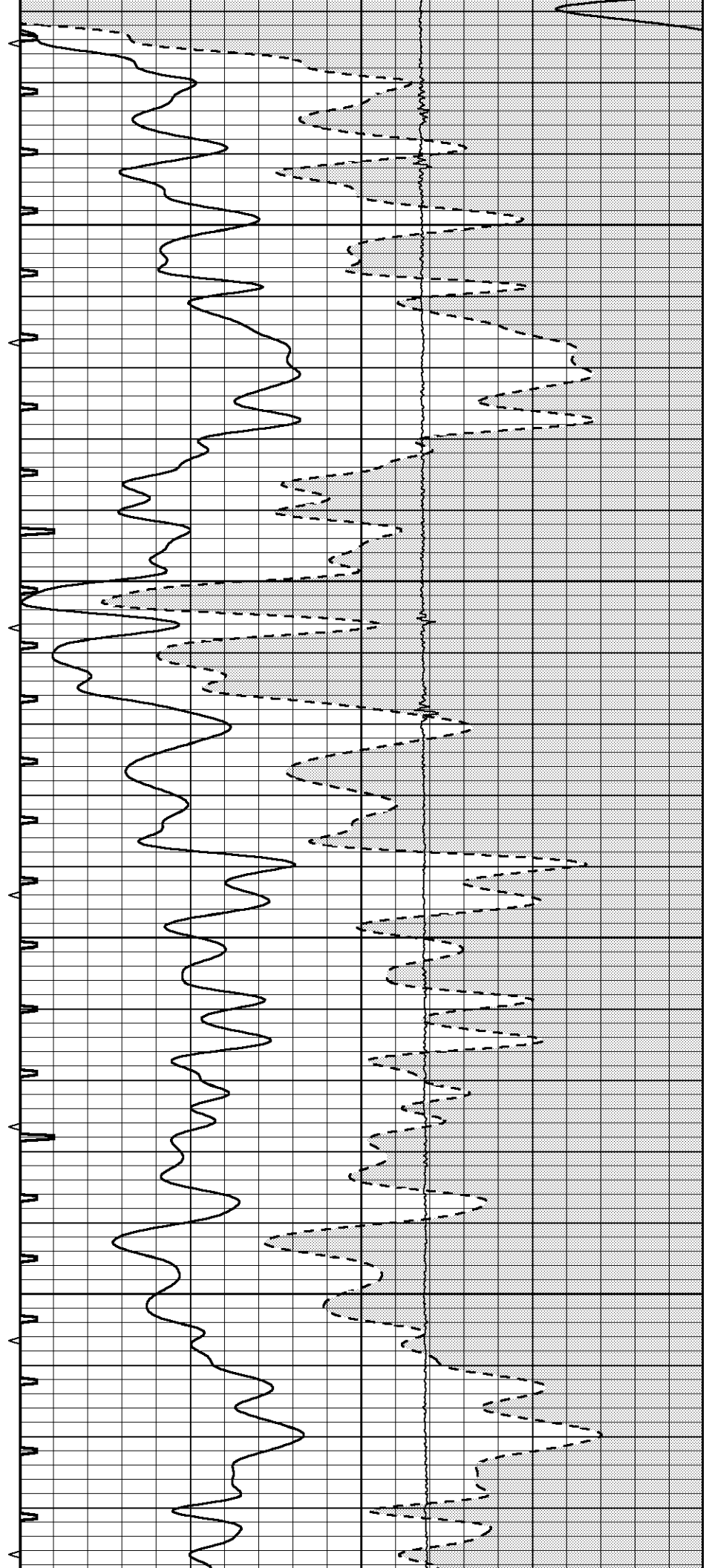


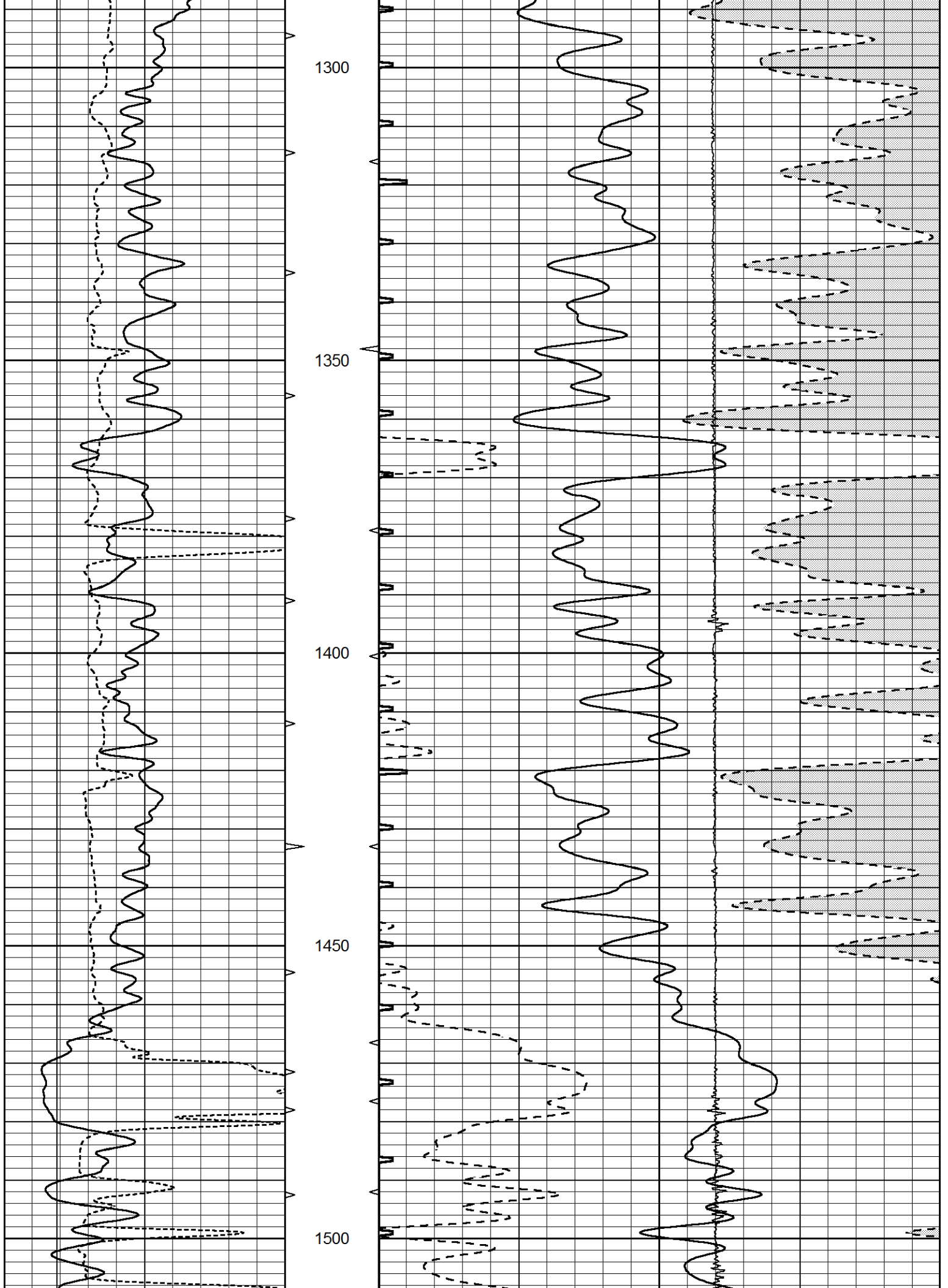
1100

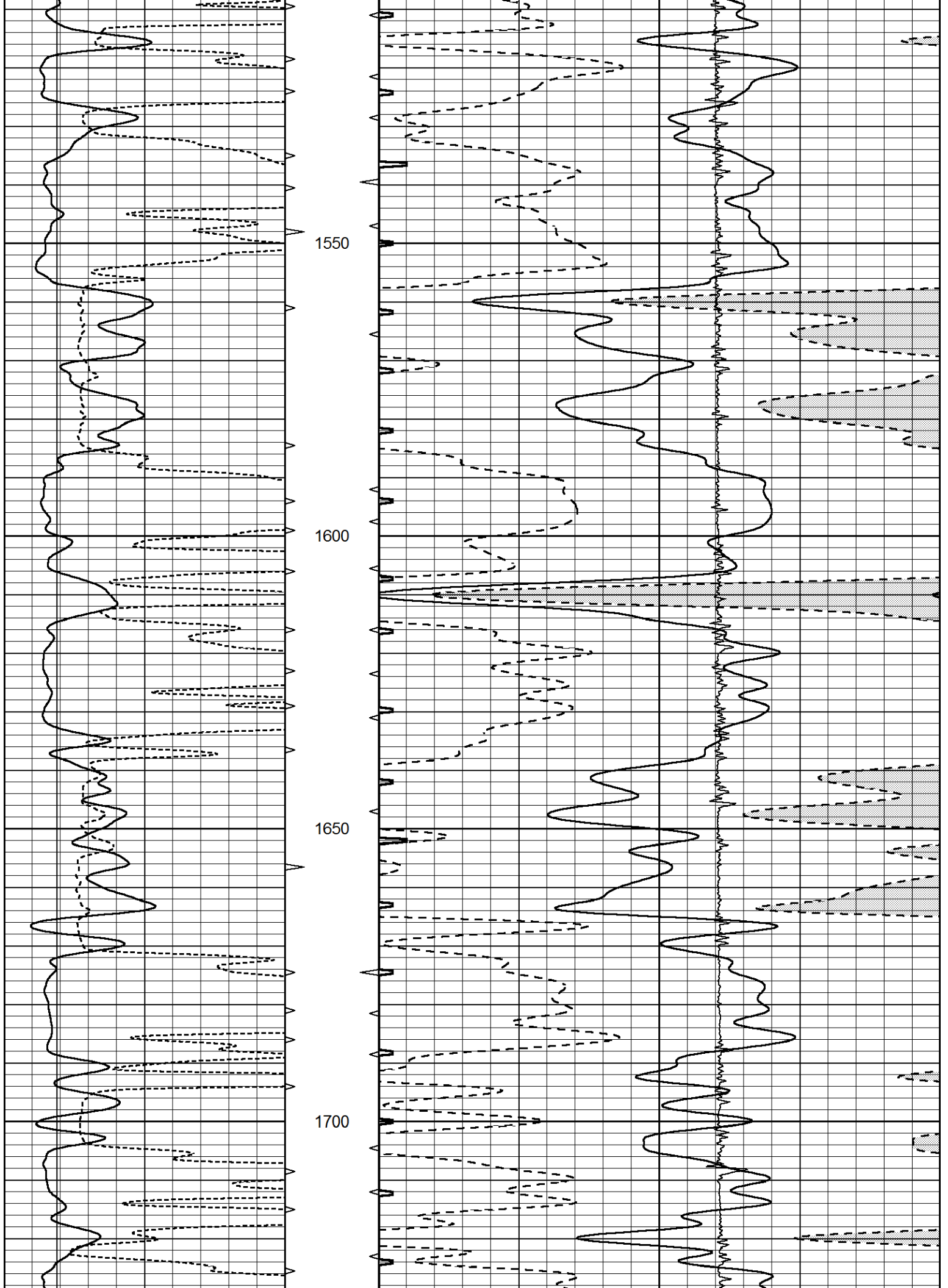
1150

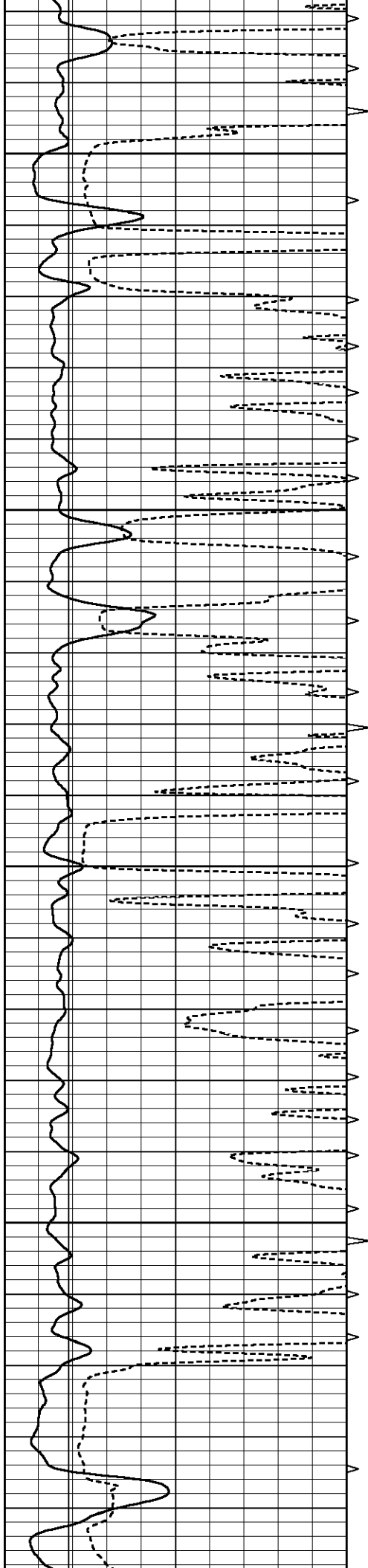
1200

1250







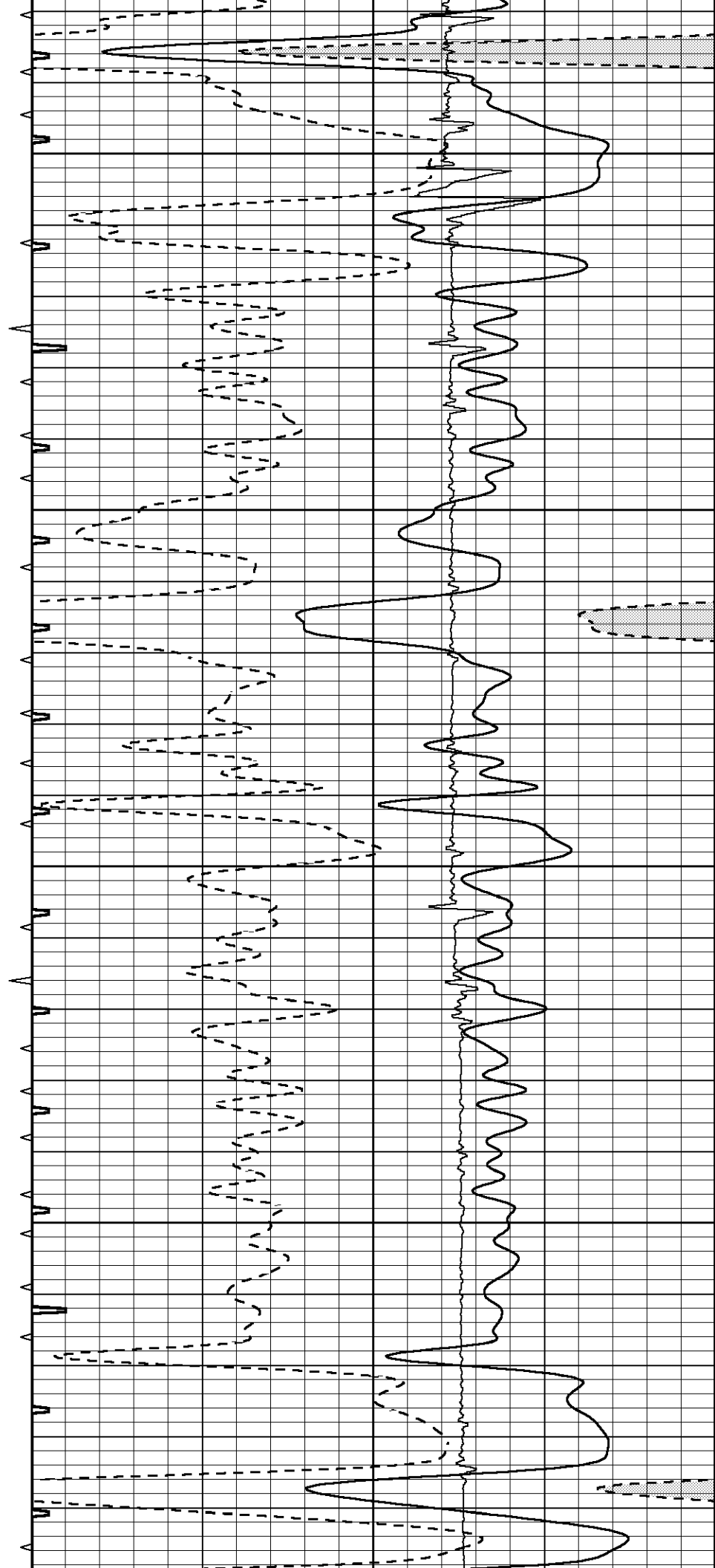


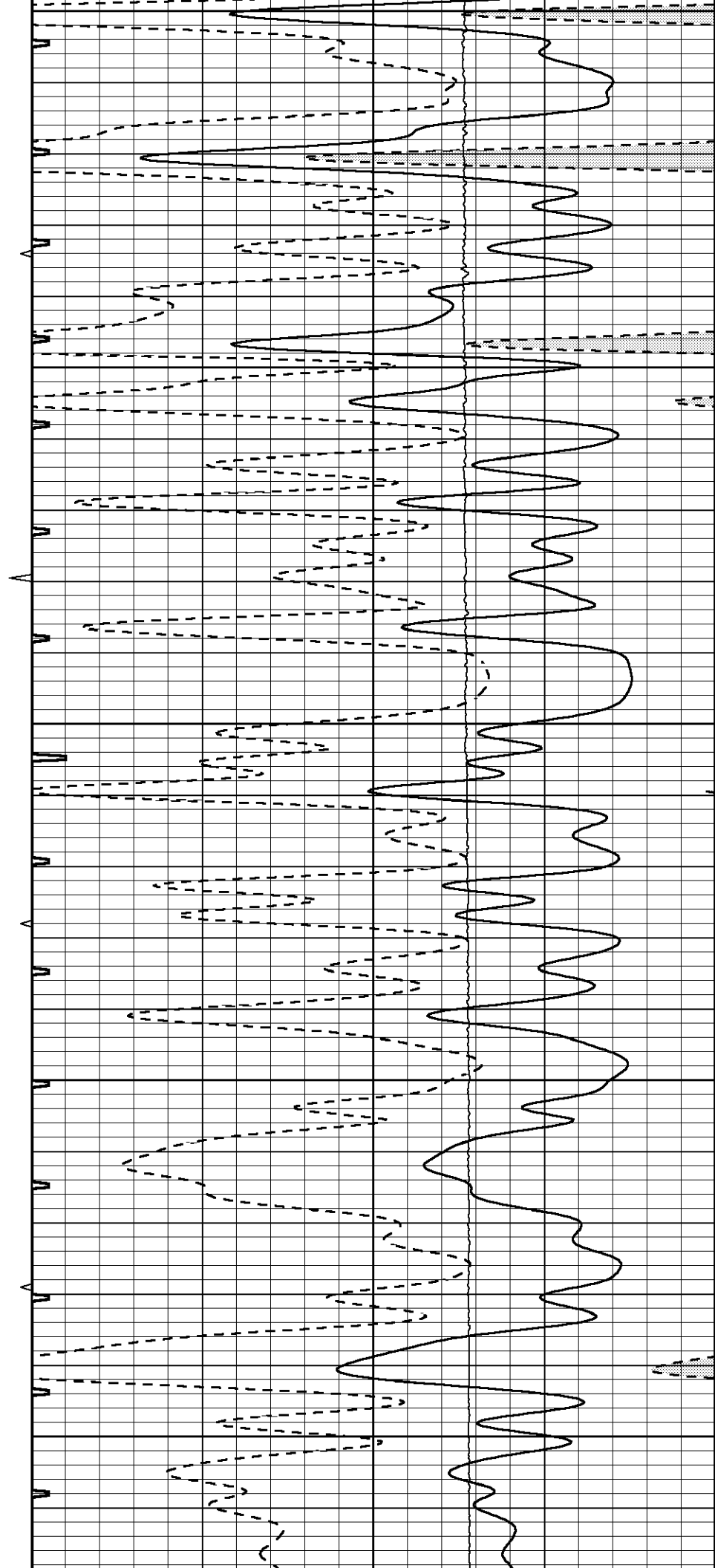
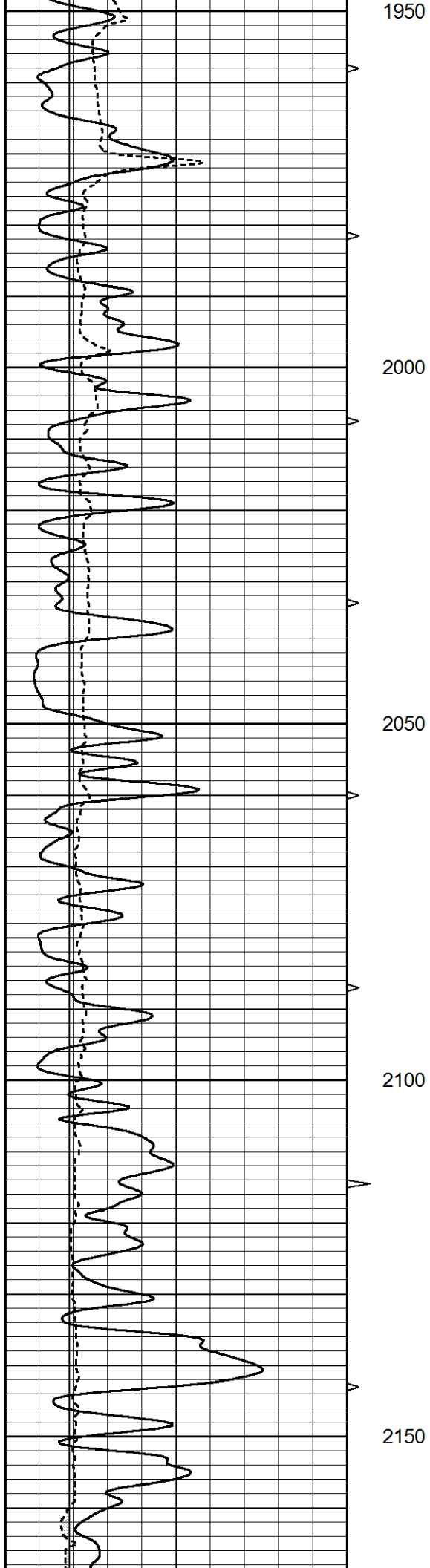
1750

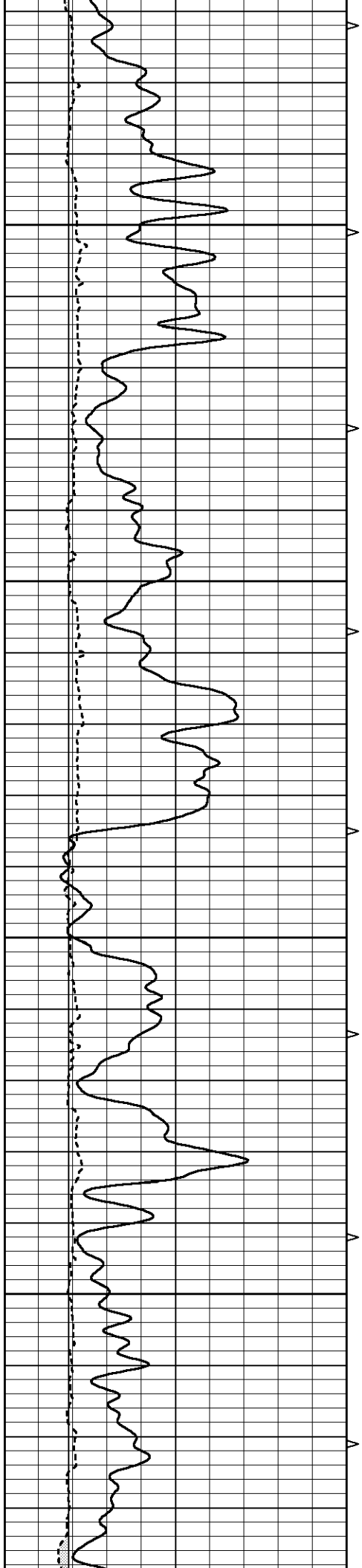
1800

1850

1900





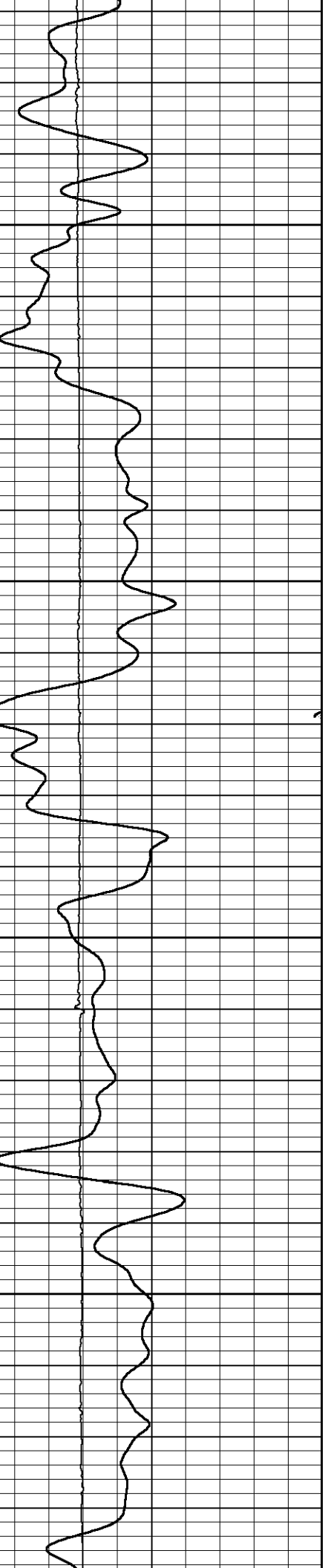
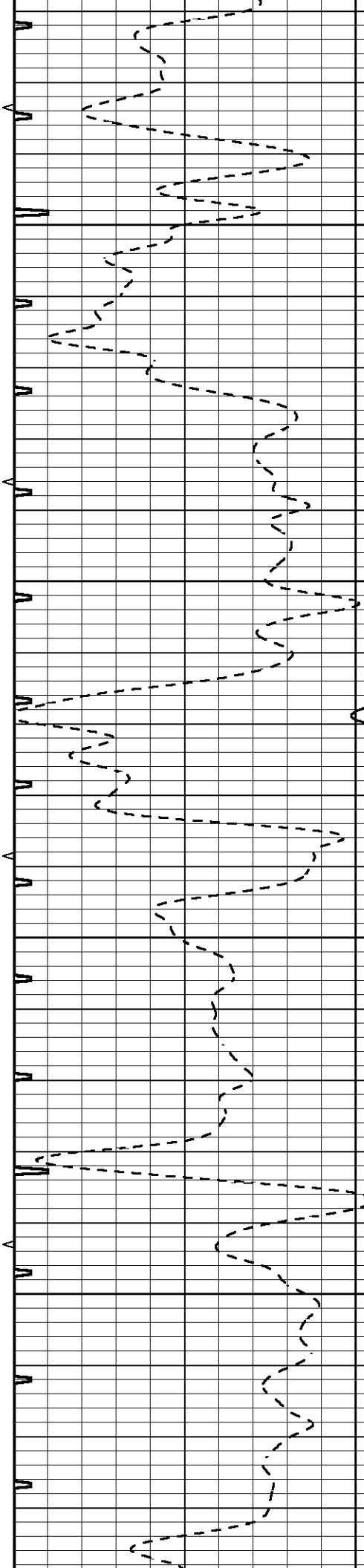


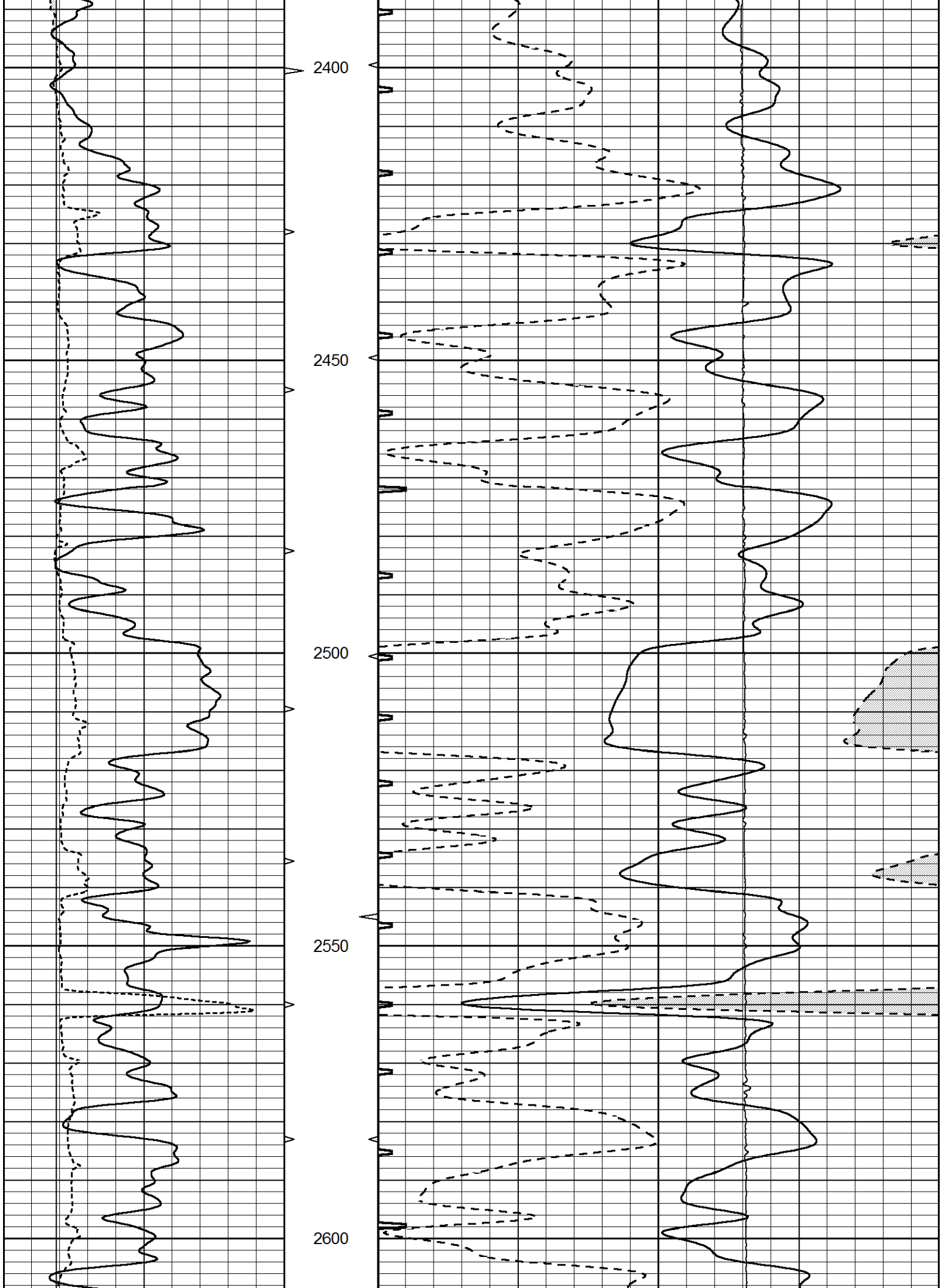
2200

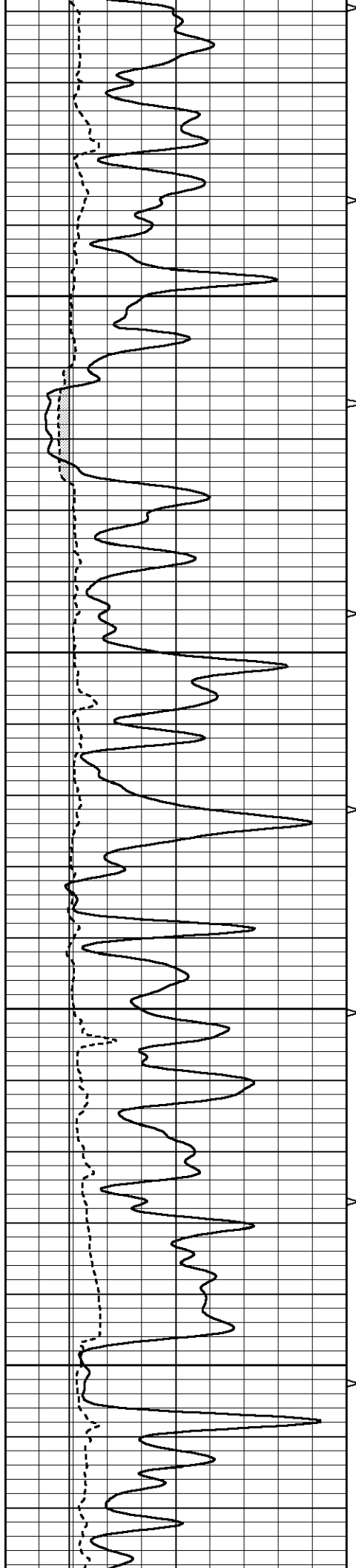
2250

2300

2350





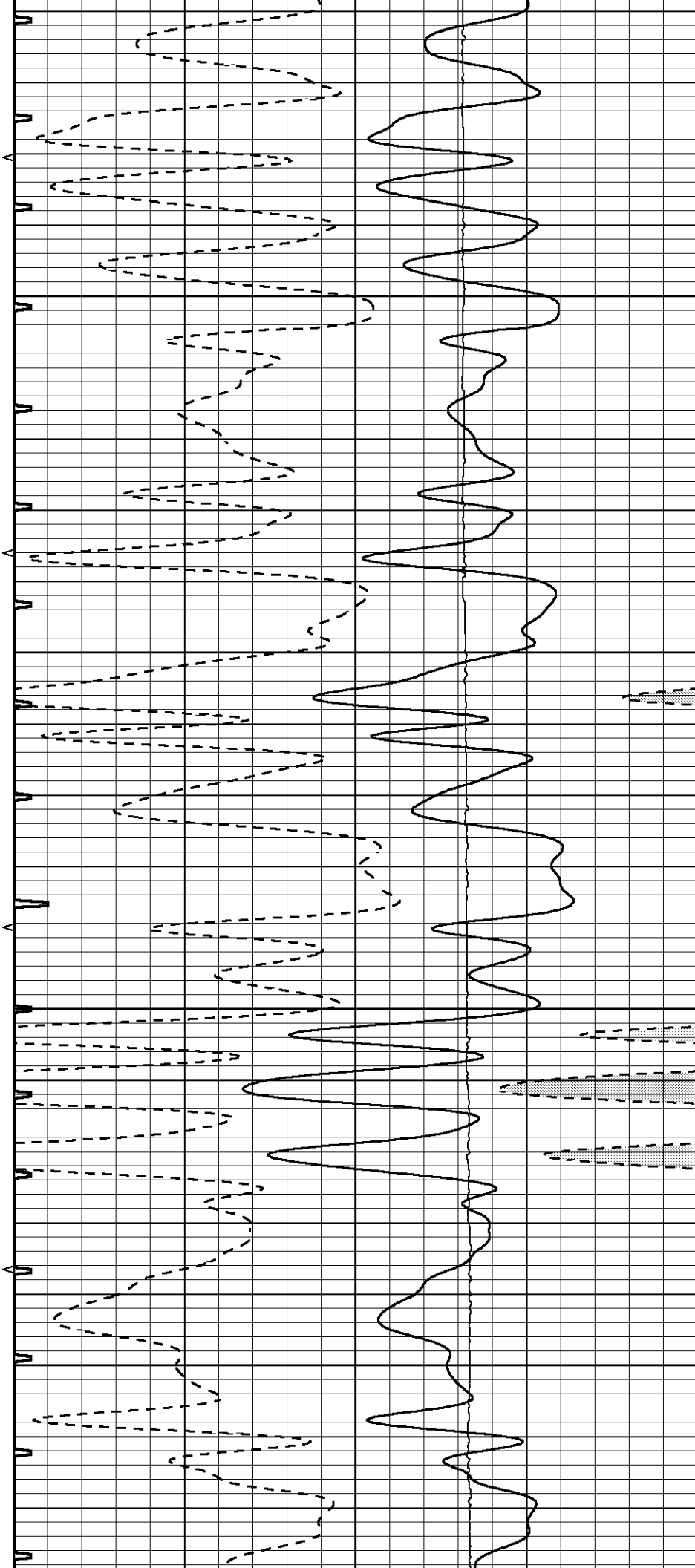


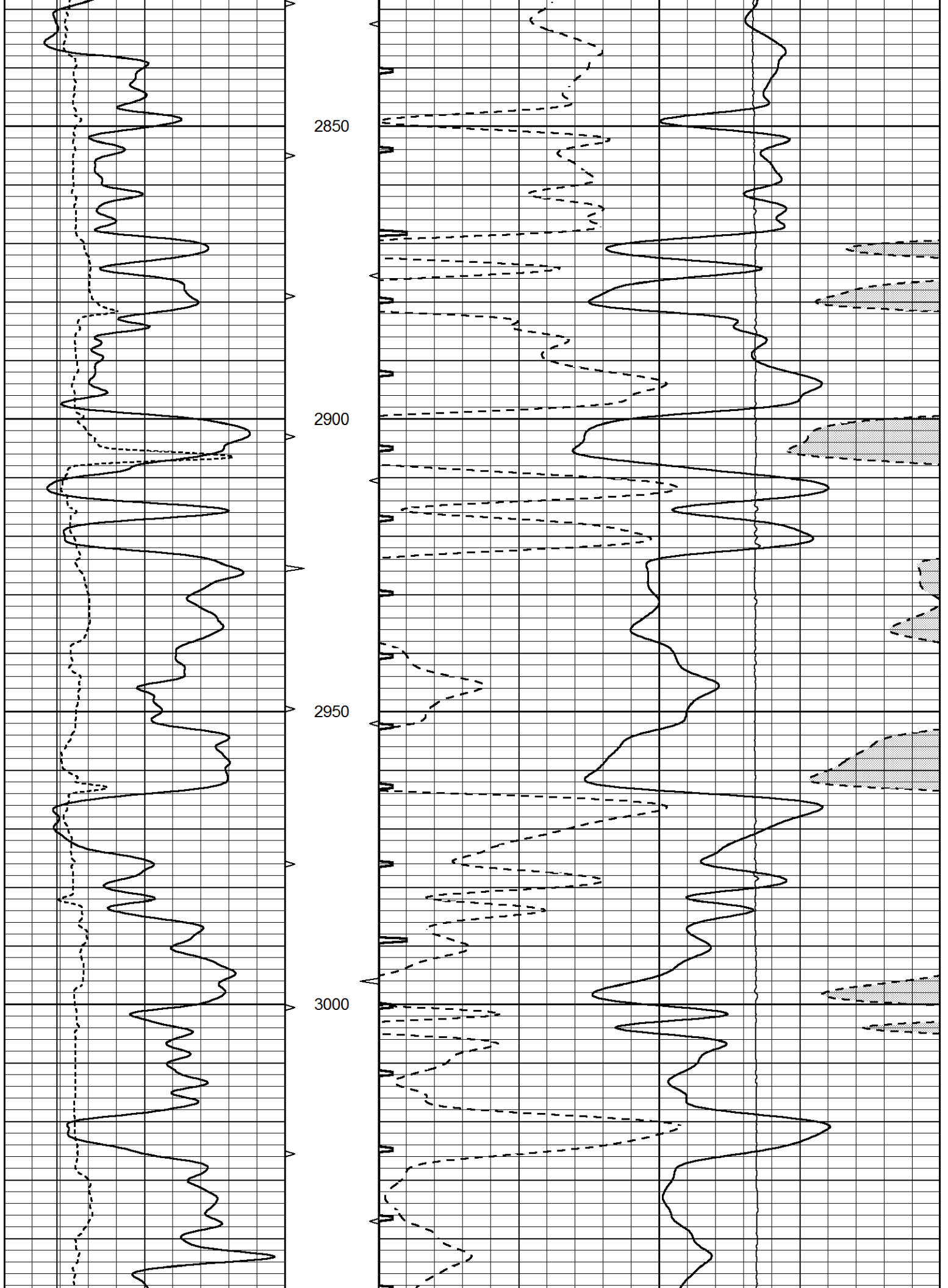
2650

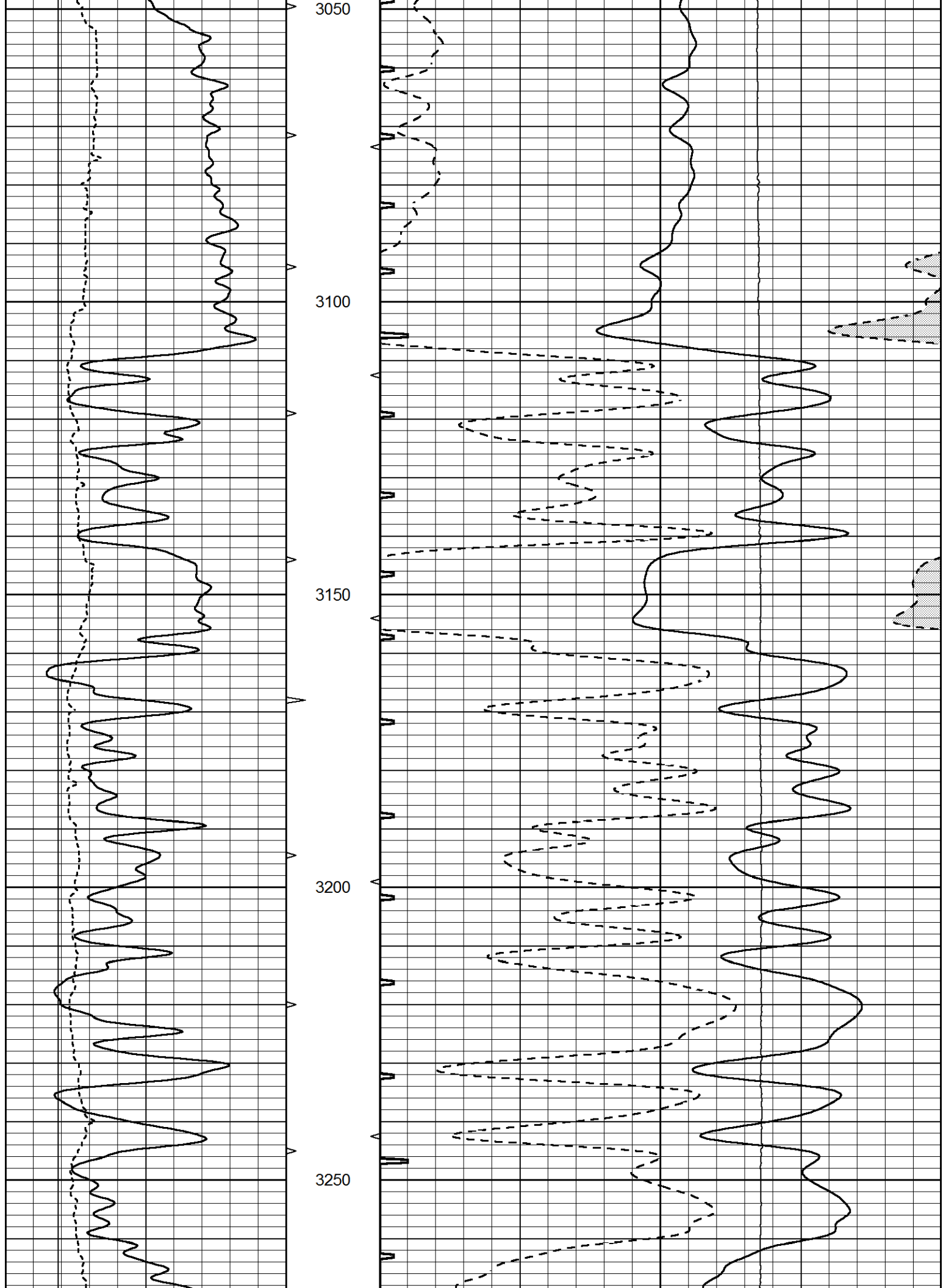
2700

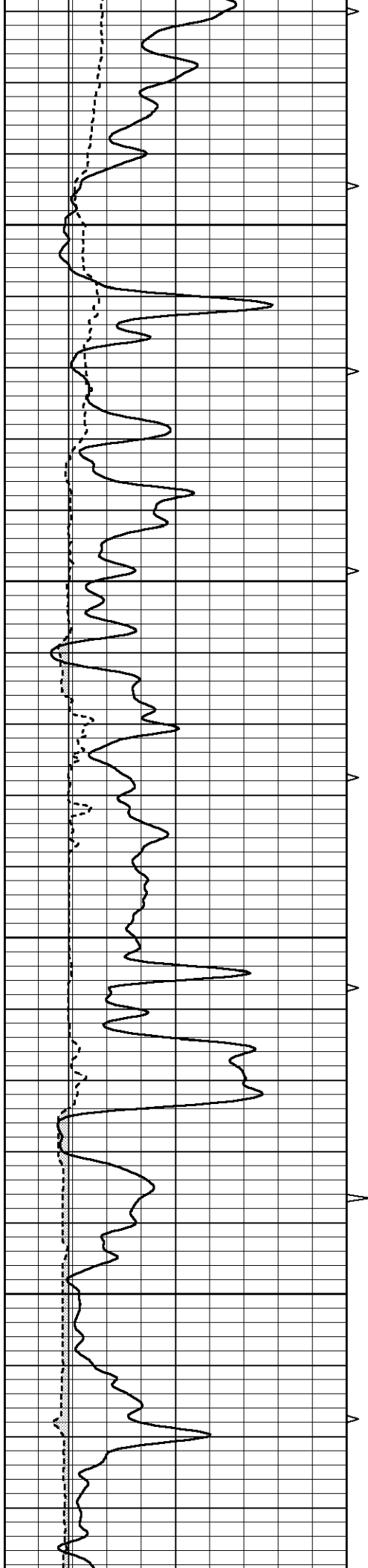
2750

2800







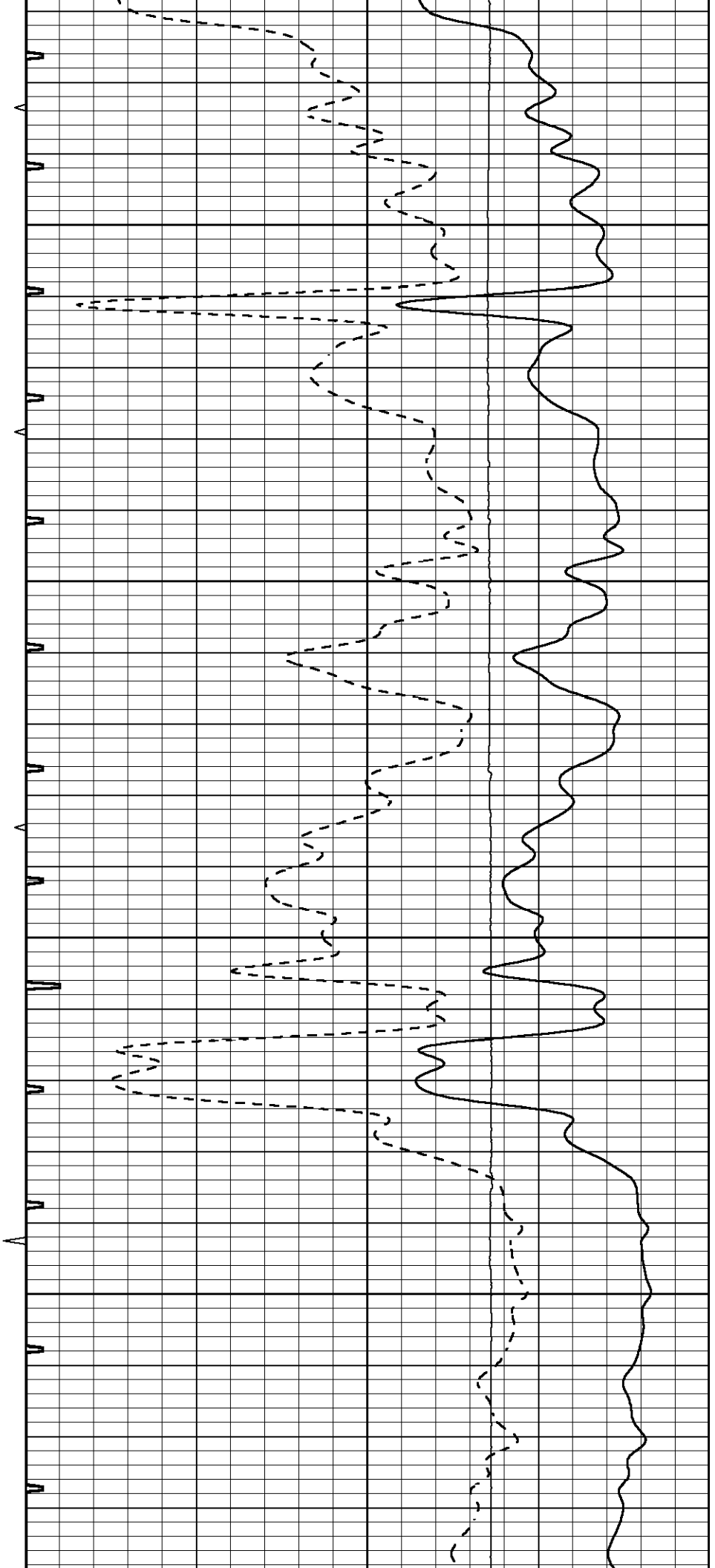


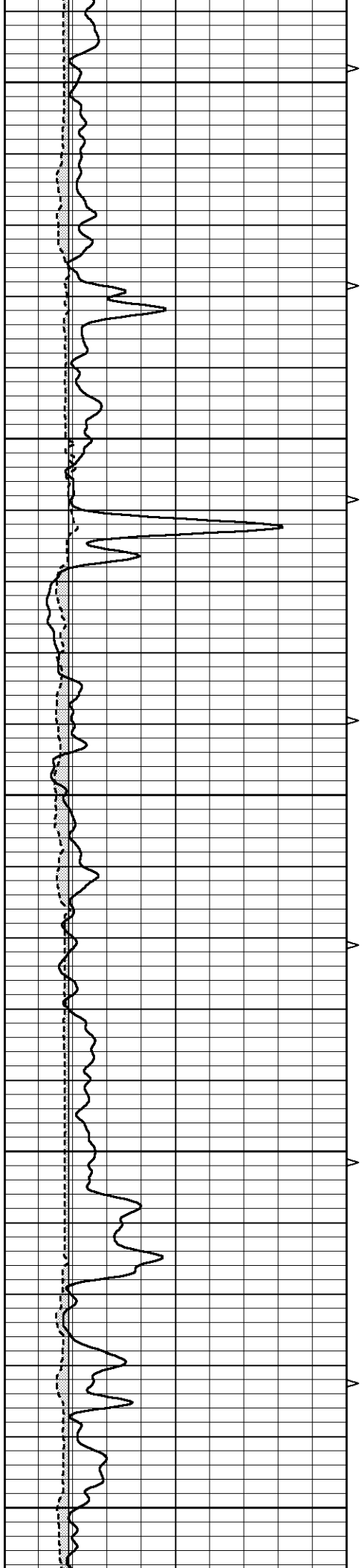
3300

3350

3400

3450





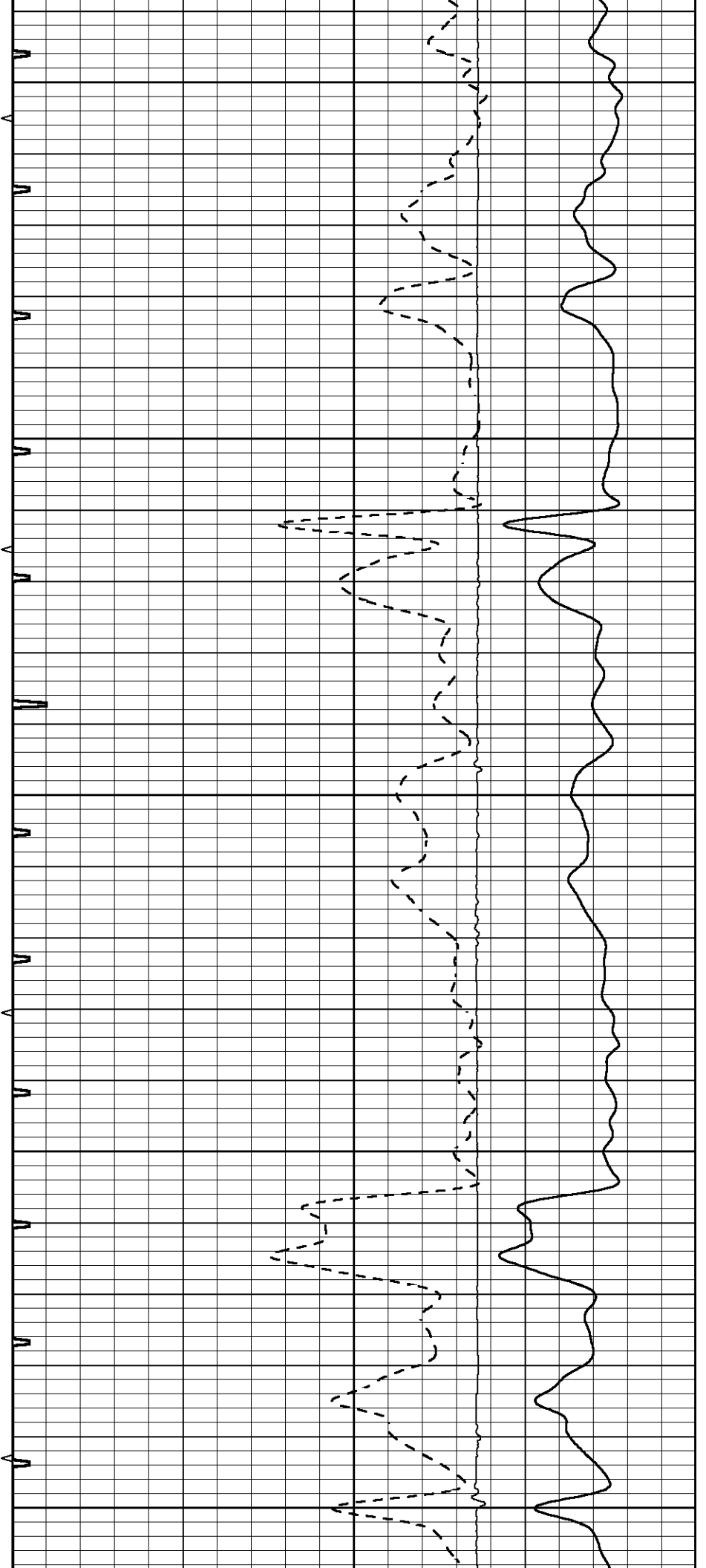
3500

3550

3600

3650

3700



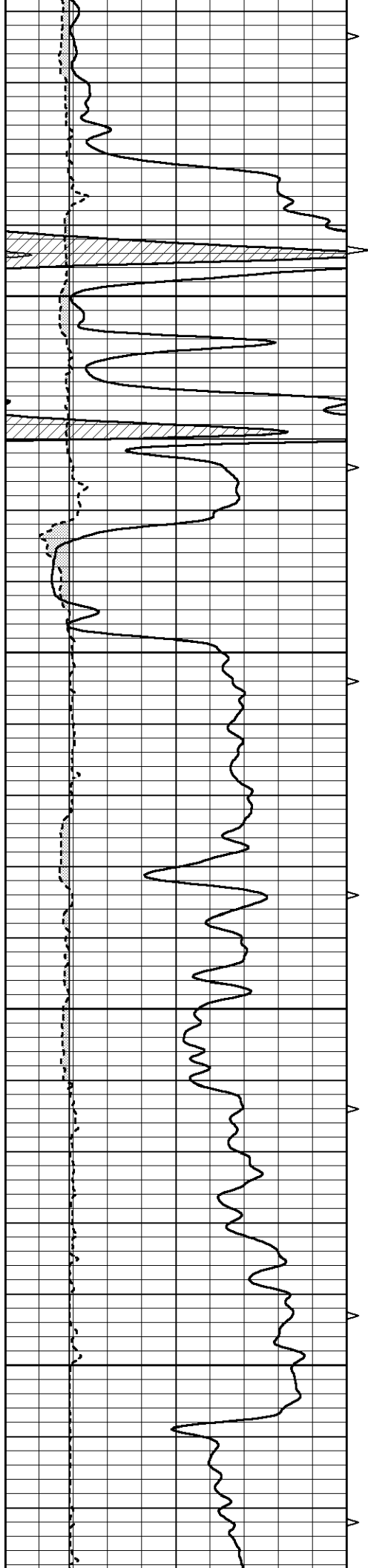
3500

3550

3600

3650

3700

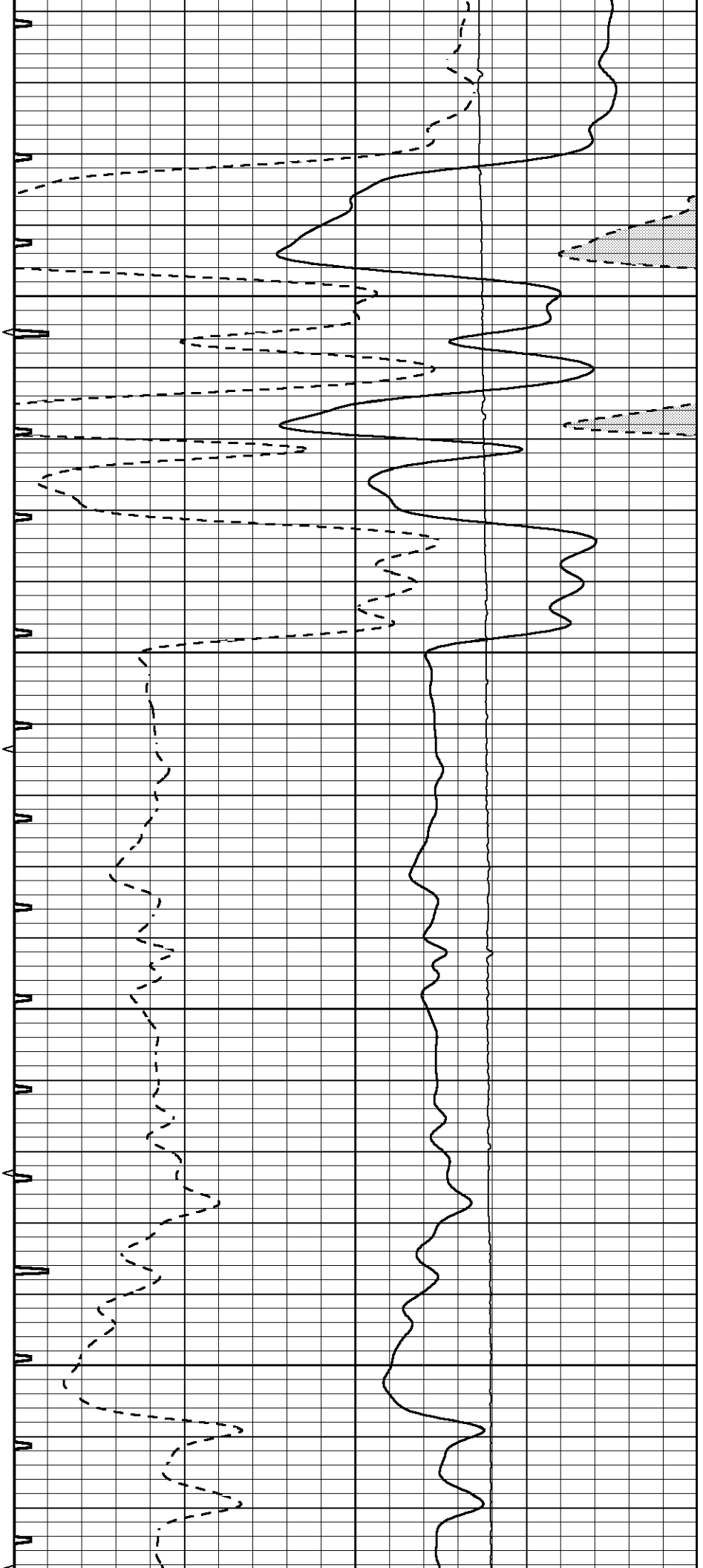


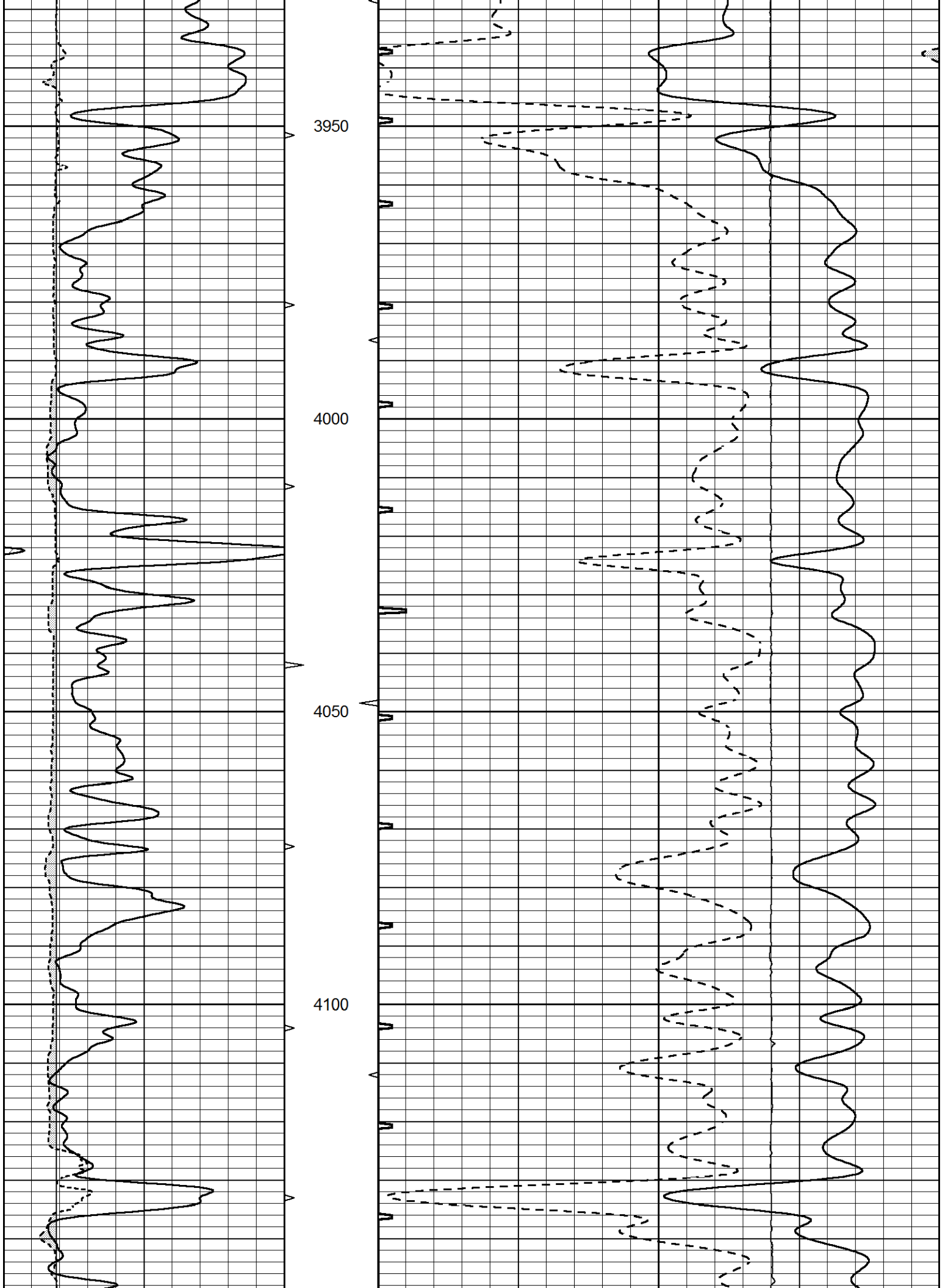
3750

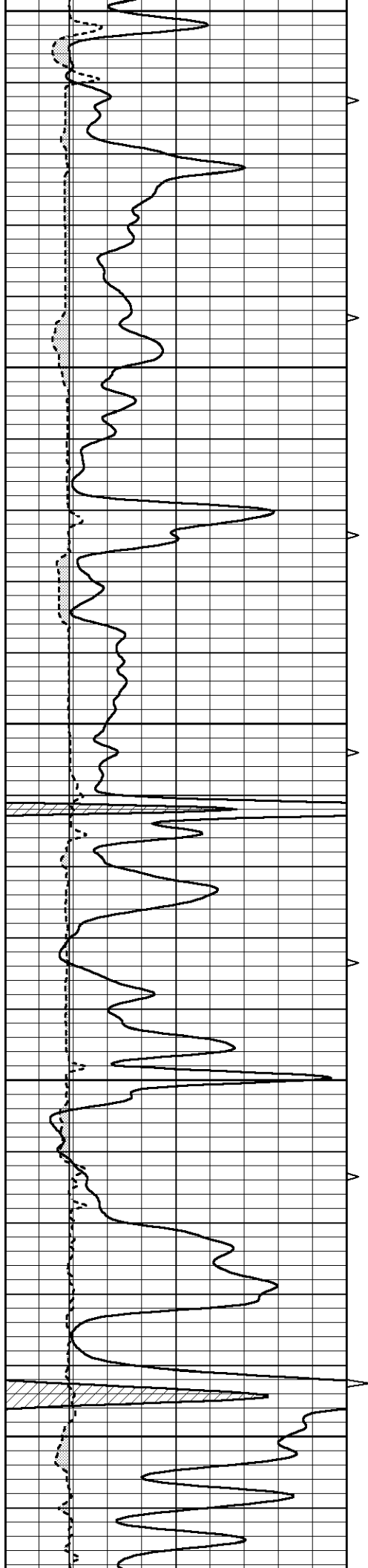
3800

3850

3900







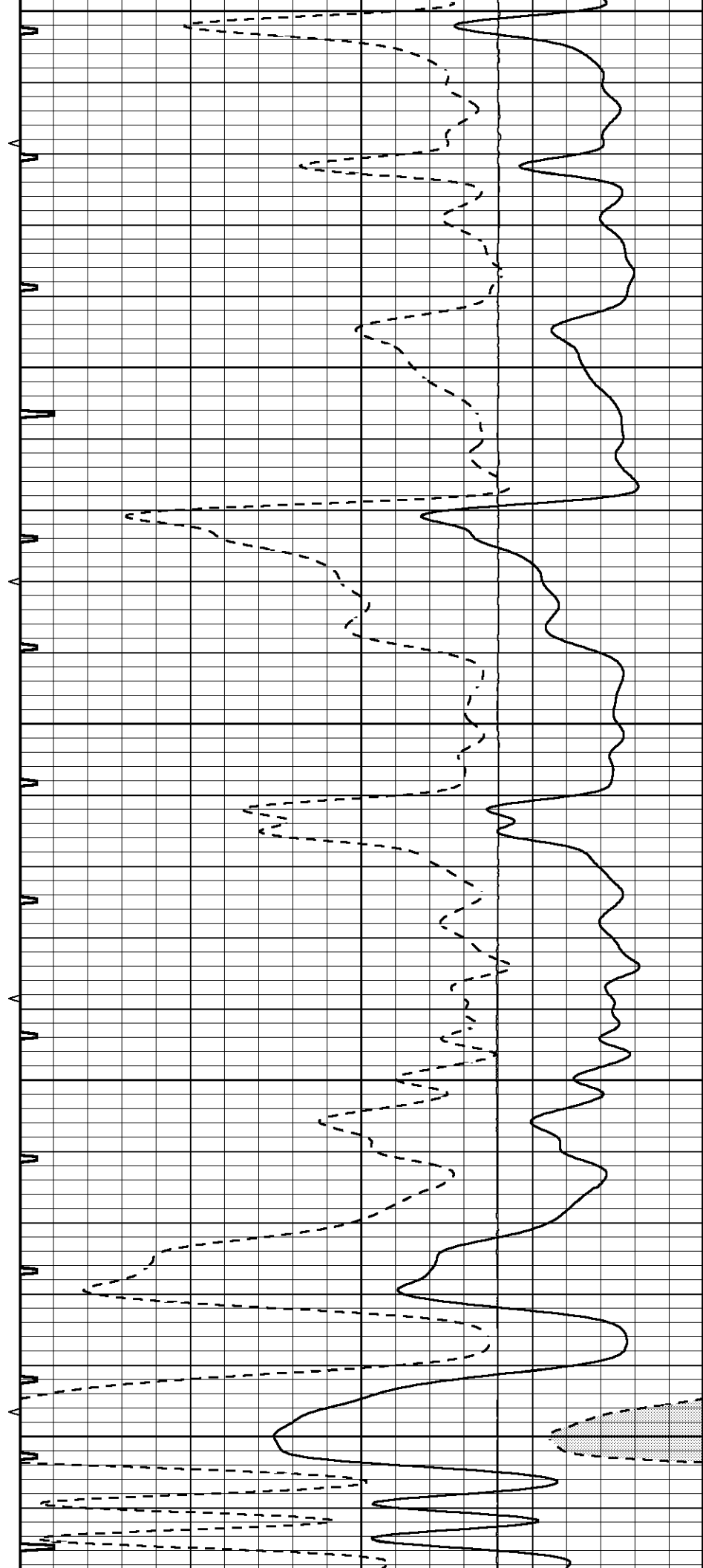
4150

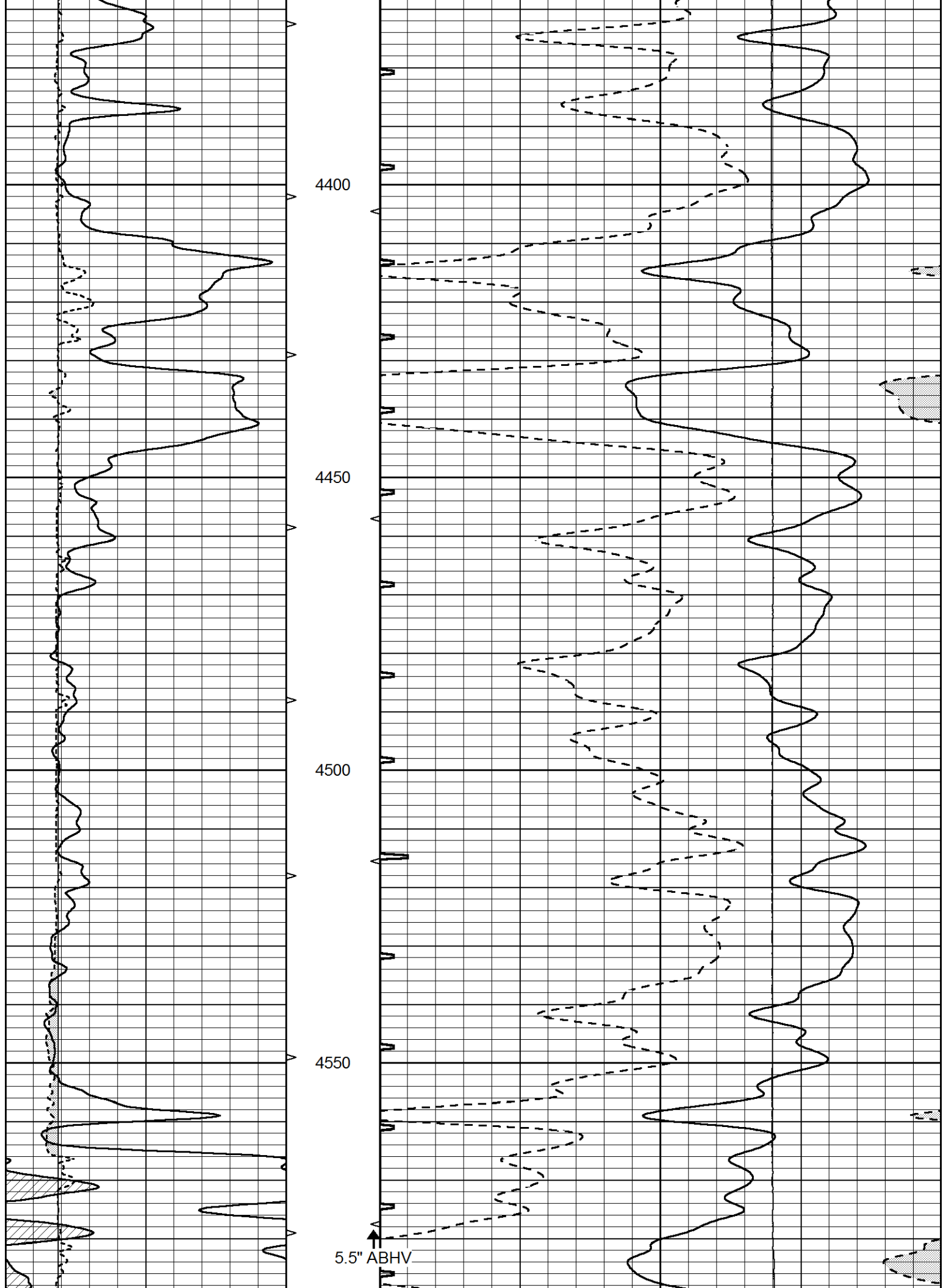
4200

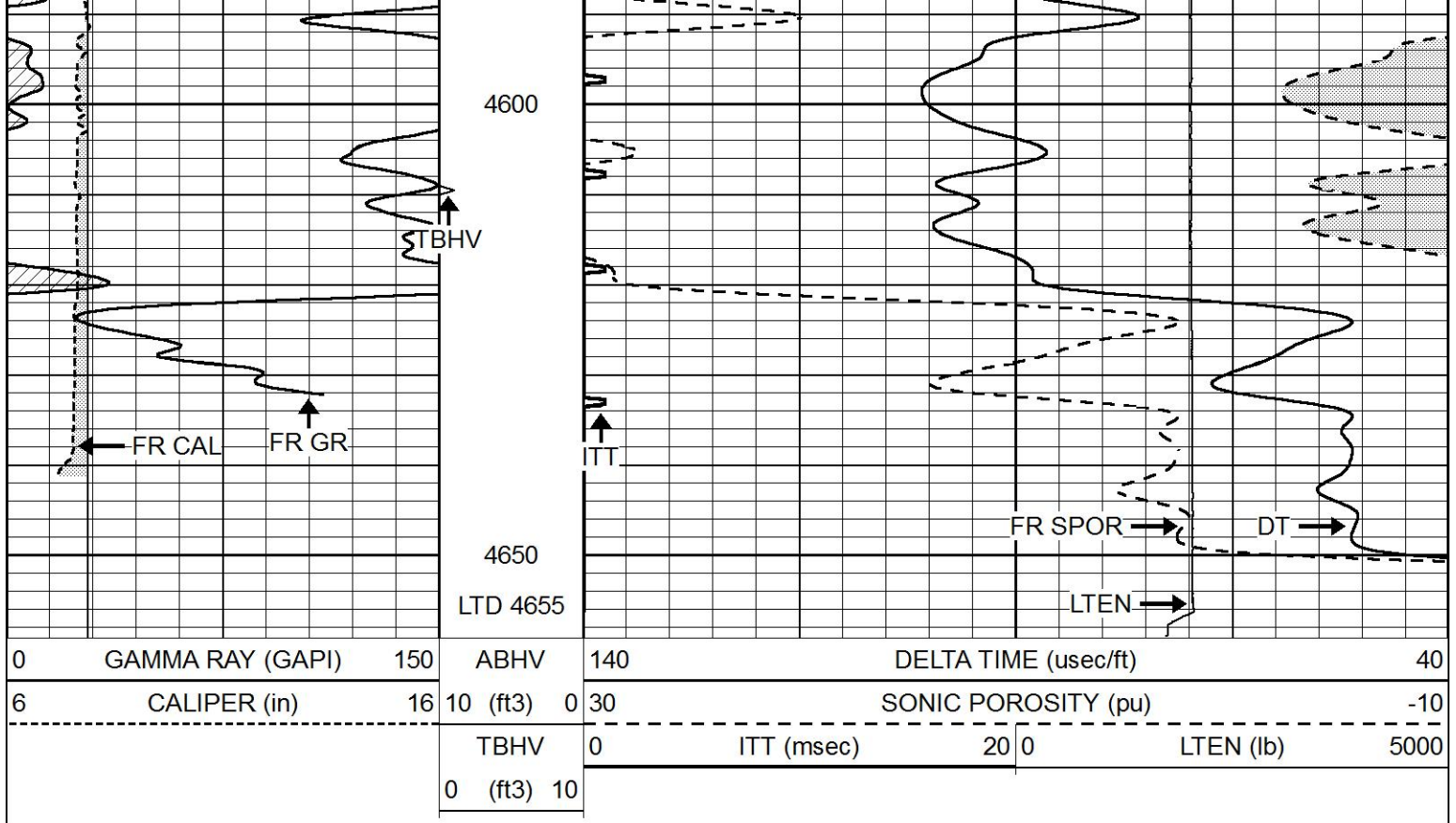
4250

4300

4350



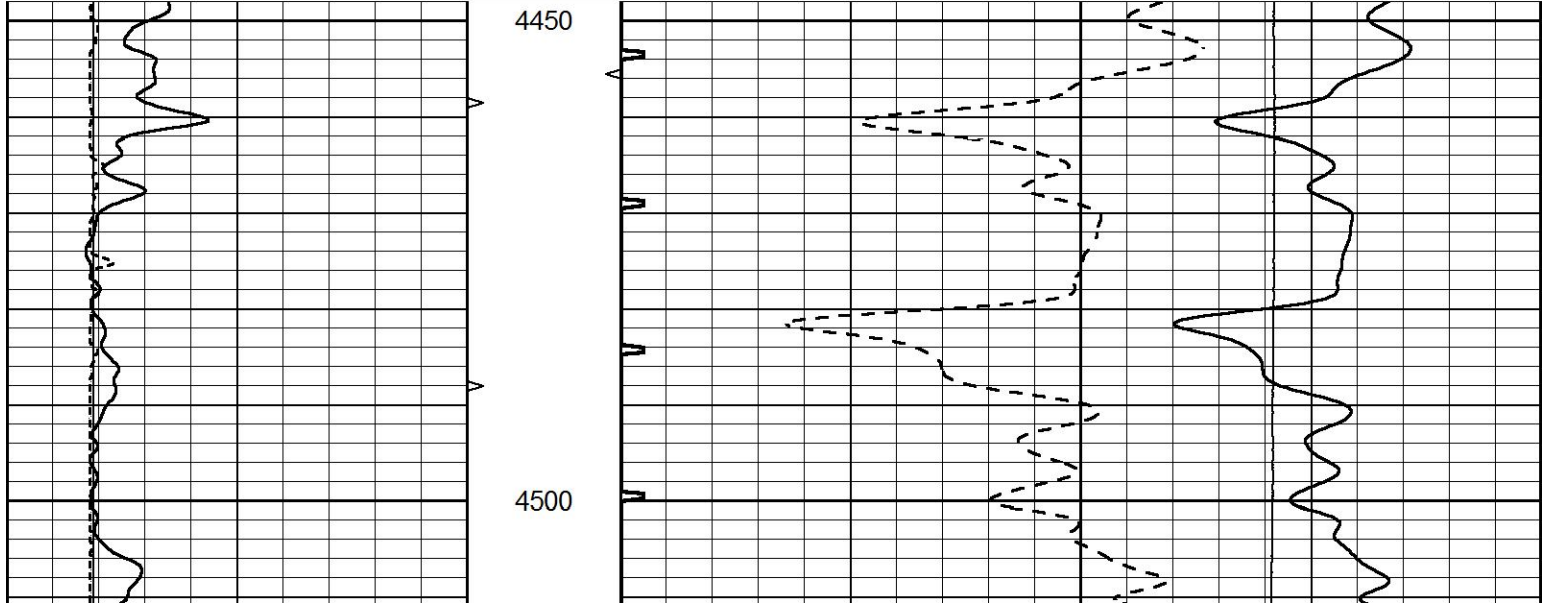


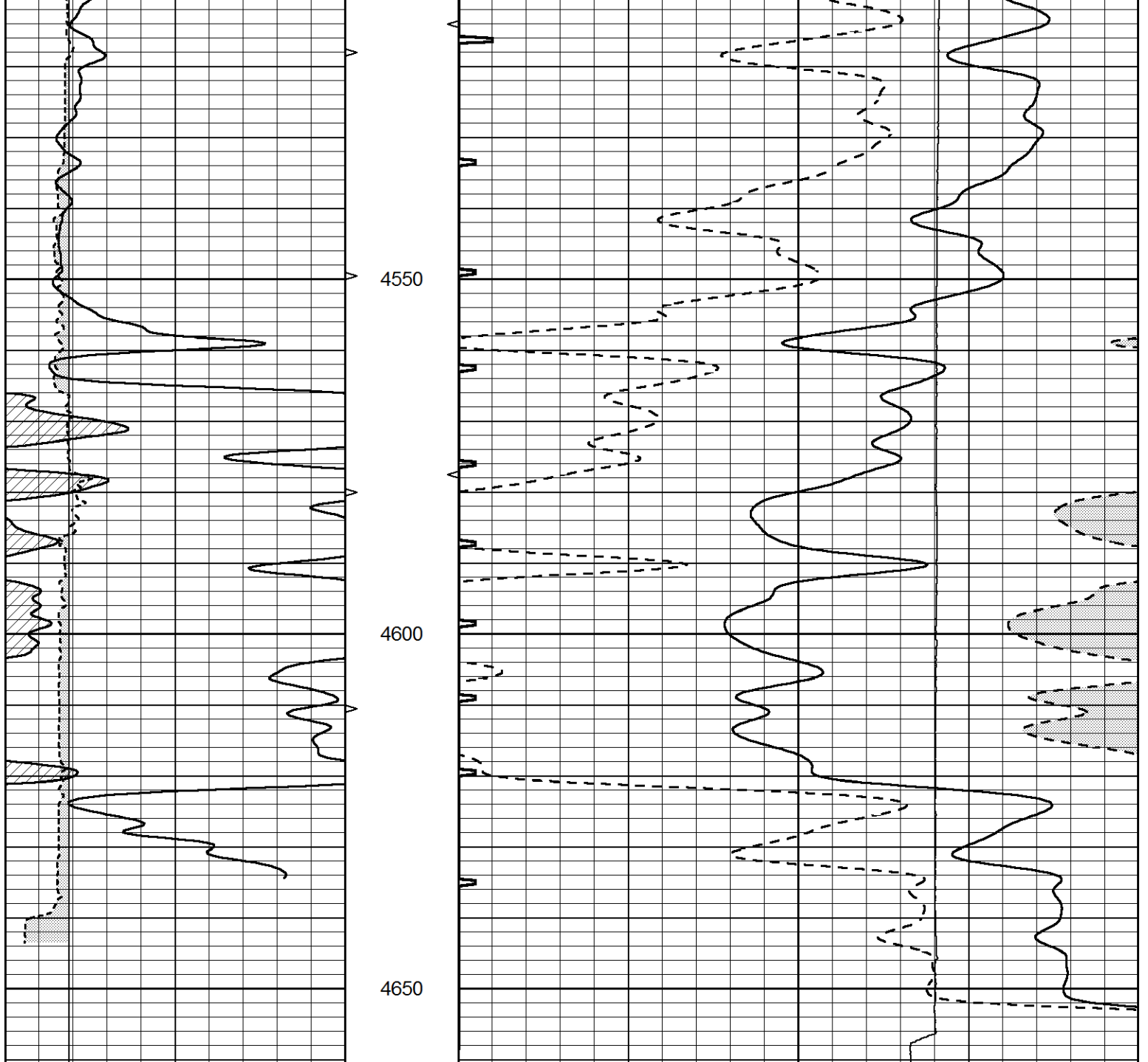


# REPEAT SECTION

Database File 9738pe.db  
 Dataset Pathname pass5.R  
 Presentation Format \_slt  
 Dataset Creation Sun Nov 23 14:31:42 2025  
 Charted by Depth in Feet scaled 1:240

0	GAMMA RAY (GAPI)	150	ABHV	140	DELTA TIME (usec/ft)	40	
6	CALIPER (in)	16	10 (ft3) 0	30	SONIC POROSITY (pu)	-10	
			TBHV	0	ITT (msec)	20 0	
			0 (ft3) 10			LTEN (lb)	5000





0	GAMMA RAY (GAPI)	150	ABHV	140	DELTA TIME (usec/ft)	40
6	CALIPER (in)	16	10 (ft3) 0	30	SONIC POROSITY (pu)	-10
			TBHV	0	ITT (msec)	20 0
			0 (ft3) 10			LTEN (lb) 5000