



**MIDWEST SURVEYS**  
 LOGGING - PERFORATING - CONSULTING SERVICES  
 P.O. Box 68, Osawatomie, KS 66064  
 913 / 755 - 2128

**GAMMA RAY / NEUTRON / CCL**

File No. Company **Colt Energy, Inc.**

Well **Knoble No.-16**

Field **Iola**

County **Allen** State **Kansas**

Location **430' FSL & 1161' FWL**

Other Services **Perforate**

Sec. 4 Twp. 24S Rge. 18E

Permament Datum **GL** Elevation **1010'**

Log Measured From **GL** K.B. NA

Drilling Measured From **GL** D.F. NA

Date **01-29-2024**

Run Number **One**

Depth Logger **1030.0**

Bottom Logged Interval **1011.0**

Top Log Interval **1010.0**

Fluid Level **Full**

Type Fluid **Water**

Density / Viscosity **NA**

Salinity - PPM Cl **NA**

Max Recorded Temp **NA**

Estimated Cement Top **NA**

Equipment No. **104** Location **Osawatimie**

Recorded By **Steve Wundsch**

Witnessed By **Was Moors**

BORE-HOLE RECORD				CASING RECORD			
Run	BIT	FROM	TO	SIZE	WGT	FROM	TO
One	12.25"	0.0	20.0	8.625"	28.0	0.0	20.0
Two	6.75"	20.0	1030.0	4.50"	10.5	0.0	1021.1
					Set	At	1017.1

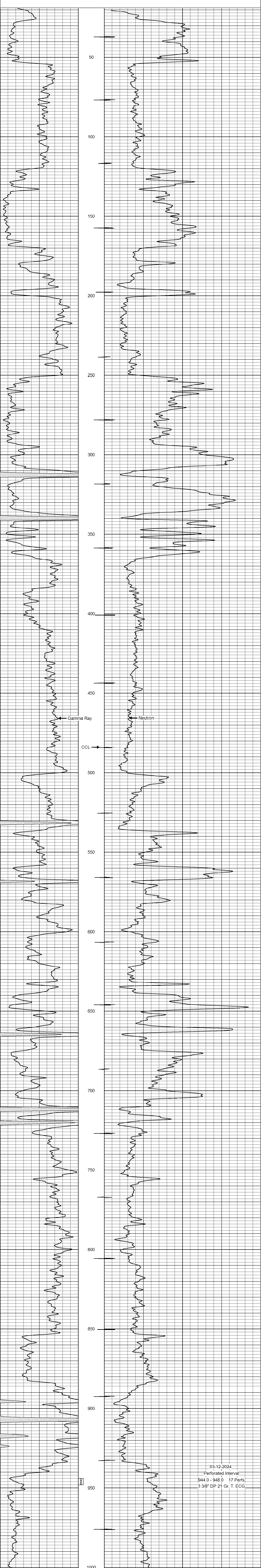
<<< Fold Here >>>

All interpretations are opinions based on inferences from electrical or other measurements and we cannot and do not guarantee the accuracy or correctness of any interpretation, and we shall not, except in the case of gross or willful negligence on our part, be liable or responsible for any loss, costs, damages, or expenses incurred or sustained by anyone resulting from any interpretation made by any of our officers, agents or employees. These interpretations are also subject to our general terms and conditions set out in our current Price Schedule.

Comments

Drilling Contractor :  
 Colt Energy, Inc.

Database File: knoble 16.db  
 Dataset Pathname: pass1  
 Presentation Format: gr-n-ccl  
 Dataset Creation: Mon Jan 29 09:49:35 2024 by Log SCH 111116  
 Charted by: Depth in Feet scaled 1:240



03-12-2024  
 Perforated Interval  
 944.0 - 948.0 17 Perfs.  
 3 3/8" DP 21 Gr. T. ECG