



MIDWEST SURVEYS
 LOGGING - PERFORATING - CONSULTING SERVICES
 P.O. Box 88, Osawatomie, KS 66804
 913 / 755 - 2128

GAMMA RAY / NEUTRON / CCL

File No. _____

Company **Colt Energy, Inc.**

Well **Baker No. - 23**

Field **Iola**

County **Allen**

State **Kansas**

Location

517' FSL & 1560' FWL

NW-SW-SE-SW

Sec. 4

Typ. 24s

Perforated From

Log Measured From

Drilling Measured From

Date 03-11-2024

Run Number One

Depth Driller 1065.0

Depth Logger 1044.9

Bottom Logged Interval 1043.9

Top Log Interval 20.0

Fluid Level Full

Fluid Level

Type Fluid Water

Density / Viscosity NA

Salinity - PPM Cl NA

Max. Recorded Temp NA

Estimated Cement Top NA

Equipment No. 107

Location Osawatimie

Recorded By Steve Windisch

Witnessed By Wes Moors

Other Services Perforate

Elevation K.B. NA

D.F. NA

G.L. 1015

Perforate

Location

517' FSL & 1560' FWL

NW-SW-SE-SW

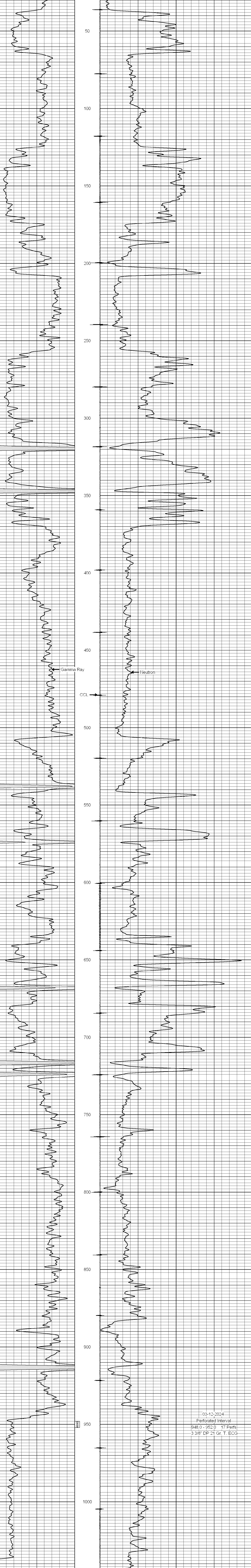
<<< Fold Here >>>

All interpretations are opinions based on inferences from electrical or other measurements and we cannot and do not guarantee the accuracy or correctness of any interpretation, and we shall not, except in the case of gross or willful negligence on our part, be liable or responsible for any loss, costs, damages, or expenses incurred or sustained by anyone resulting from any interpretation made by any of our officers, agents or employees. These interpretations are also subject to our general terms and conditions set out in our current Price Schedule.

Comments

Drilling Contractor :
 Colt Energy, Inc.

Database File: baker 23.db
 Dataset Pathname: pass1
 Presentation Format: gr-n-ccl
 Dataset Creation: Mon Mar 11 12:49:09 2024 by Log SCH 111116
 Charted by: Depth in Feet scaled 1:240



0 Gamma Ray (cps) 150
 150 Gamma Ray (cps) 300

-1 CCL 1
 10 Neutron (cps) 2100