



MIDWEST SURVEYS
 LOGGING - PERFORATING - CONSULTING SERVICES
 P.O. Box 68, Osawatomie, KS 66064
 913 / 755 - 2128

GAMMA RAY / NEUTRON / CCL

File No. Company **Colt Energy, Inc.**

Well **Baker No. - 26**

Field **Iola**

County **Allen** State **Kansas**

Location **608' FSL & 2239' FWL**

Other Services **Perforate**

Sec. 4 Twp. 24S Rge. 18E

Permament Datum **GL** Elevation **1025'**

Log Measured From **GL** K.B. NA

Drilling Measured From **GL** D.F. NA

Date **03-11-2024** Elevation **GL 1025'**

Run Number **One**

Depth Driller **1075.0**

Depth Logger **1054.9**

Bottom Logged Interval **1053.9**

Top Log Interval **20.0**

Fluid Level **Full**

Type Fluid **Water**

Density / Viscosity **NA**

Salinity - PPM Cl **NA**

BORE-HOLE RECORD		CASING RECORD					
Run	BIT	FROM	TO	SIZE	WT	FROM	TO
One	12.25"	0.0	20.0	8.625"	28.0	0.0	20.0
Two	6.75"	20.0	1075.0	4.50"	10.5	0.0	1096.0
						AT	1092.0

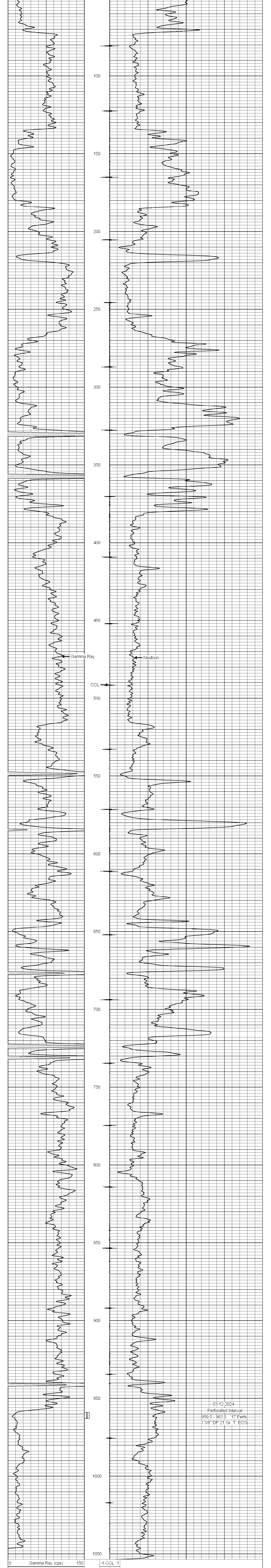
<<< Fold Here >>>

All interpretations are opinions based on inferences from electrical or other measurements and we cannot and do not guarantee the accuracy or correctness of any interpretation, and we shall not, except in the case of gross or willful negligence on our part, be liable or responsible for any loss, costs, damages, or expenses incurred or sustained by anyone resulting from any interpretation made by any of our officers, agents or employees. These interpretations are also subject to our general terms and conditions set out in our current Price Schedule.

Comments

Drilling Contractor : **Colt Energy, Inc.**

Database File: baker 26.db
 Dataset Pathname: pass1
 Presentation Format: gr-n-ccl
 Dataset Creation: Mon Mar 11 11:20:25 2024 by Log SCH 111116
 Charted by: Depth in Feet scaled 1:240



03-12-2024
 Perforated Interval
 959.0 - 963.0 17 Perfs
 3 3/8" DP 21 Gr. T. ECG