

MIDWEST SURVEYS
 LOGGING - PERFORATING - CONSULTING SERVICES
 P.O. Box 68, Osawatomie, KS 66064
 913 / 755 - 2128

GAMMA RAY / NEUTRON / CCL

File No. Company **Colt Energy, Inc.**
 Well **Baker No.- 25**
 Field **Iola**
 County **Allen** State **Kansas**

Location **616 FSL & 1955' FWL**
NE-SW-SE-SW
 Other Services
 Perforate
 Section **4** Top **248** Rgs **18a** Elevation **1017'**
 Permament Datum **GL** K.B. **NA**
 Log Measured From **GL** D.F. **NA**
 Drilling Measured From **GL** Elevation **1017'**

Date	03-11-2024
Run Number	One
Depth Logger	1035.0
Bottom Logged Interval	1019.0
Top Log Interval	1018.0
Fluid Level	20.0
Fluid Level	Full
Type Fluid	Water
Density / Viscosity	NA
Salinity - PPM Cl	NA
Max. Recorded Temp	NA
Estimated Cement Top	NA
Equipment No.	107
Recorded By	Carvalante
Reviewed By	Steve Windisch
Witnessed By	Ves Moots

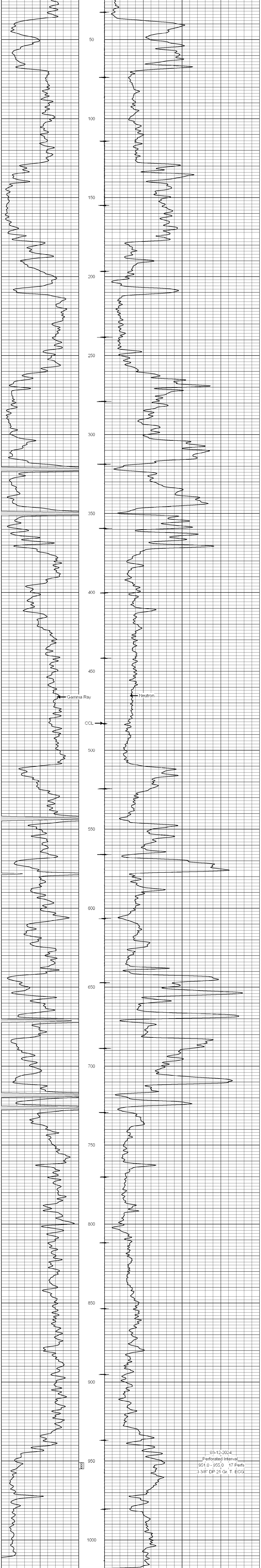
BORE-HOLE RECORD			
RUN No.	BIT FROM	TO	SIZE
One	12.35'	20.0	8.635"
Two	6.75'	20.0	4.50"
CASING RECORD			
	WGT	FROM	TO
	28.0	0.0	20.0
	10.5	0.0	1029.0
	Set	At	1022.0

<<< Fold Here >>>
 All interpretations are opinions based on inferences from electrical or other measurements and we cannot and do not guarantee the accuracy or correctness of any interpretation, and we shall not, except in the case of gross or willful negligence on our part, be liable or responsible for any loss, costs, damages, or expenses incurred or sustained by anyone resulting from any interpretation made by any of our officers, agents or employees. These interpretations are also subject to our general terms and conditions set out in our current Price Schedule.

Comments

Drilling Contractor :
 Colt Energy, Inc.

Database File: baker 25.db
 Dataset Pathname: pass1
 Presentation Format: gr-n-ccl
 Dataset Creation: Mon Mar 11 14:10:27 2024 by Log SCH 111116
 Charted by: Depth in Feet scaled 1:240



03-12-2024
 Perforated Interval
 951.0 - 955.0 17 Perfs
 3 3/8" DP 21 Gr. T. ECG