



**MIDWEST SURVEYS**  
 LOGGING - PERFORATING - CONSULTING SERVICES  
 P.O. Box 68, Ossawatimie, KS 66064  
 913 / 755 - 2128

**GAMMA RAY / NEUTRON / CCL**

File No.

Company **RCS Oil**

Well **Holman No.- 6**

Field **Humboldt / Chanute**

County **Neosho** State **Kansas**

Location **135 FSL & 3200 FEL  
SW-SE-SE-SW**

Other Services **Perforate**

Sec 2  
Twp 27S Rge 18E  
Permian Datum  
Log Measured From  
Drilling Measured From

Temp 27s  
GL  
GL  
GL

Elevation 933'  
Elevation 933'  
Elevation 933'

KB NA  
D.F. NA  
G.L. 933'

Date 01-18-2024

Run Number One

Depth Driller 815.0

Depth Logger 801.0

Bottom Logged Interval 800.0

Top Log Interval 20.0

Fluid Level Full

Type Fluid Water

Density / Viscosity NA

Salinity - PPM Cl NA

Max Recorded Temp NA

Estimated Cement Top 0.0

Equipment No. Location 104 Osawatimie

Recorded By Steve Windisch

Witnessed By Justin Hoepker

BORE-HOLE RECORD				CASING RECORD			
RUN	BIT	FROM	TO	SIZE	WGT.	FROM	TO
One	9.875"	0.0	210	7.00"	15.0	0.0	210
Two	5.825"	21	815.0	2.875"	6.5	0.0	802.0

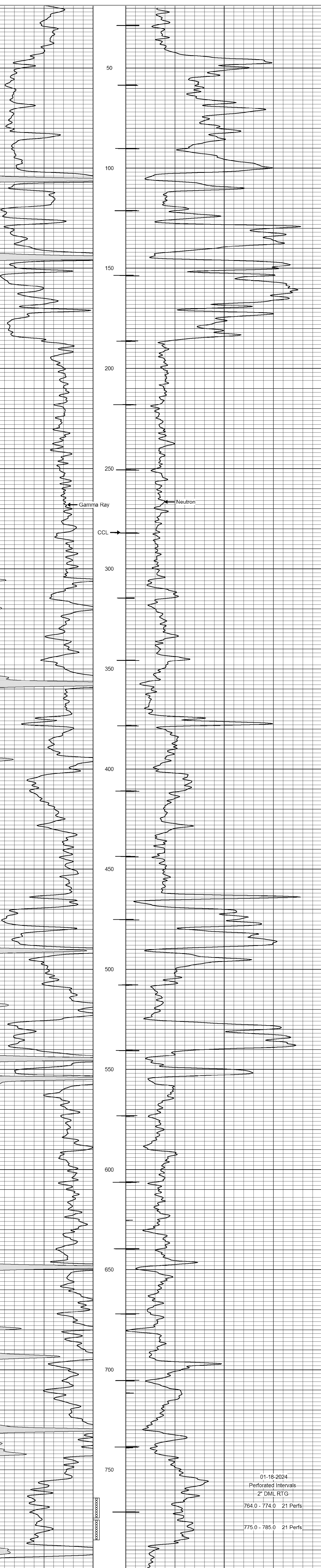
<<< Fold Here >>>

All interpretations are opinions based on inferences from electrical or other measurements and we cannot and do not guarantee the accuracy or correctness of any interpretation, and we shall not, except in the case of gross or willful negligence on our part, be liable or responsible for any loss, costs, damages, or expenses incurred or sustained by anyone resulting from any interpretation made by any of our officers, agents or employees. These interpretations are also subject to our general terms and conditions set out in our current Price Schedule.

Comments

Drilling Contractor :  
RCS Oil

Database File: holman 6.db  
 Dataset Pathname: pass 1  
 Presentation Format: gr-n-ccl  
 Dataset Creation: Thu Jan 18 10:37:59 2024 by Log SCH 111116  
 Charted by: Depth in Feet scaled 1:240



01-18-2024  
 Perforated Intervals  
 2" DML RTG  
 764.0 - 774.0 21 Perfs  
 775.0 - 785.0 21 Perfs