



| Sensor       | Offset (ft)    | Schematic | Description                        | Length (ft) | O.D. (in) | Weight (lb) |  |
|--------------|----------------|-----------|------------------------------------|-------------|-----------|-------------|--|
|              |                |           | CENT-PENGO (3-PENGO)               | 4.25        | 3.00      | 70.00       |  |
| WWF4<br>WWF1 | 12.25<br>12.25 |           | SLT-PENGO (601)<br>3 1/2 BHC Sonic | 16.00       | 3.50      | 300.00      |  |
| WWF3<br>WWF2 | 10.25<br>10.25 |           |                                    |             |           |             |  |
|              |                |           | CENT-PENGO (4-PENGO)               | 4.25        | 3.00      | 70.00       |  |

Dataset: amwar\_patricia #1-16.db: field/well/Sonic/pass3  
 Total length: 24.50 ft  
 Total weight: 440.00 lb  
 O.D.: 3.50 in

# Log Variables

DatabaseC:\ProgramData\Warrior\Data\amwar\_patricia #1-16.db  
 Dataset field/well/StkMI/pass3.12/\_vars\_

## Top - Bottom

|                       |                        |                     |                       |                       |                          |                      |             |
|-----------------------|------------------------|---------------------|-----------------------|-----------------------|--------------------------|----------------------|-------------|
| BOREID<br>in<br>7.875 | BOTTEMP<br>degF<br>122 | CASEOD<br>in<br>5.5 | CASETHCK<br>in<br>0   | FLUIDDEN<br>g/cc<br>1 | MATRXDEN<br>g/cc<br>2.71 | NPORSEL<br>Limestone | PERFS<br>No |
| SNDERR<br>mmho/m<br>1 | SNDERRM<br>mmho/m<br>3 | SPSHIFT<br>mV<br>0  | SRFTEMP<br>degF<br>50 | SZCOR<br>Off          | TDEPTH<br>ft<br>4635     |                      |             |

## Variable Description

BOREID : Borehole I.D.  
 BOTTEMP : Bottom Hole Temperature  
 CASEOD : Casing O.D.  
 CASETHCK : Casing Thickness  
 FLUIDDEN : Fluid Density  
 MATRXDEN : Matrix Density  
 NPORSEL : Neutron Porosity Curve Select

PERFS : Perforation Flag  
 SNDERR : Deep Sonde Error Correction  
 SNDERRM : Medium Sonde Error Correction  
 SPSHIFT : S.P. Baseline Offset  
 SRFTEMP : Surface Temperature  
 SZCOR : CN Size Cor. ?  
 TDEPTH : Total Depth

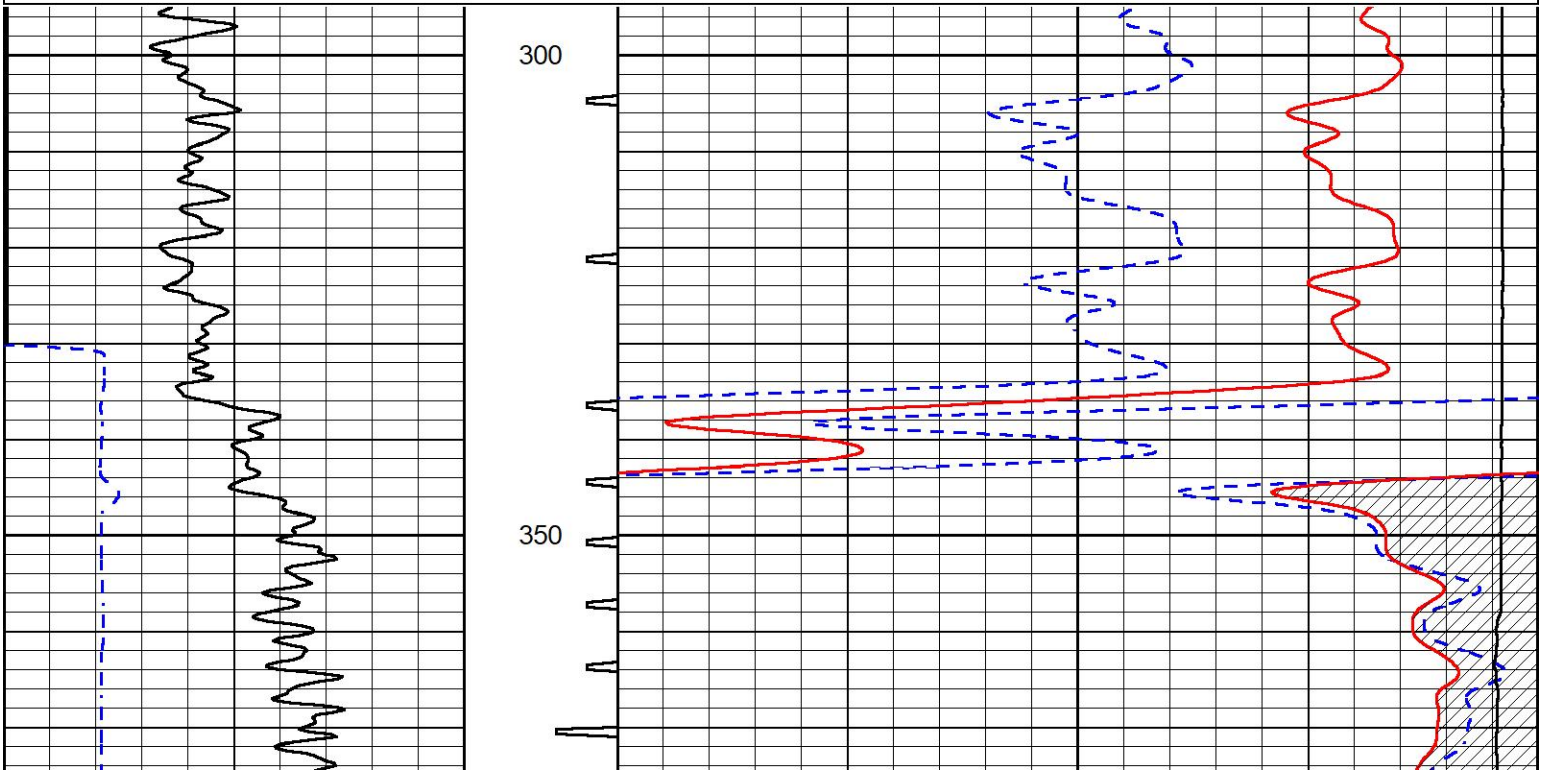


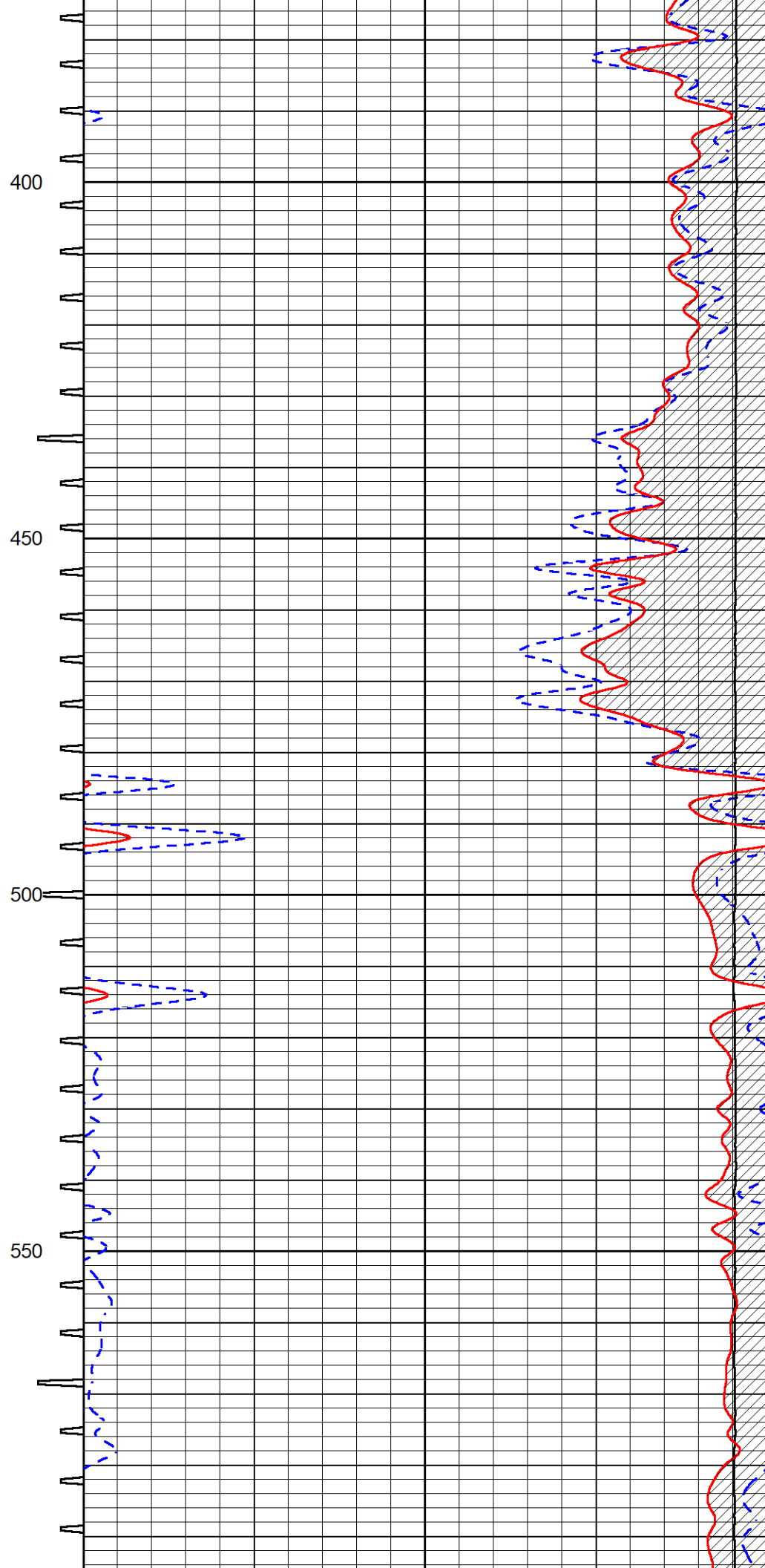
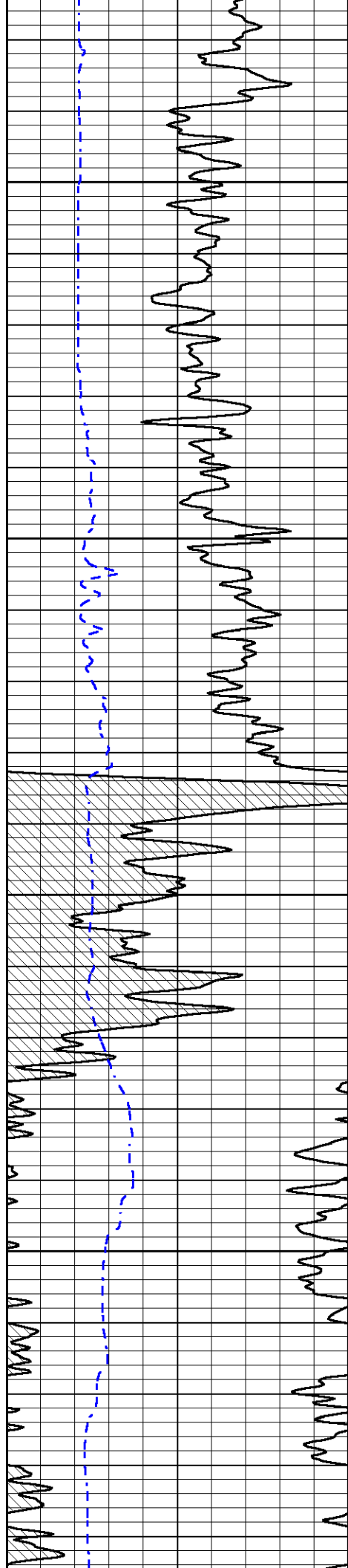
## DETAIL SECTION

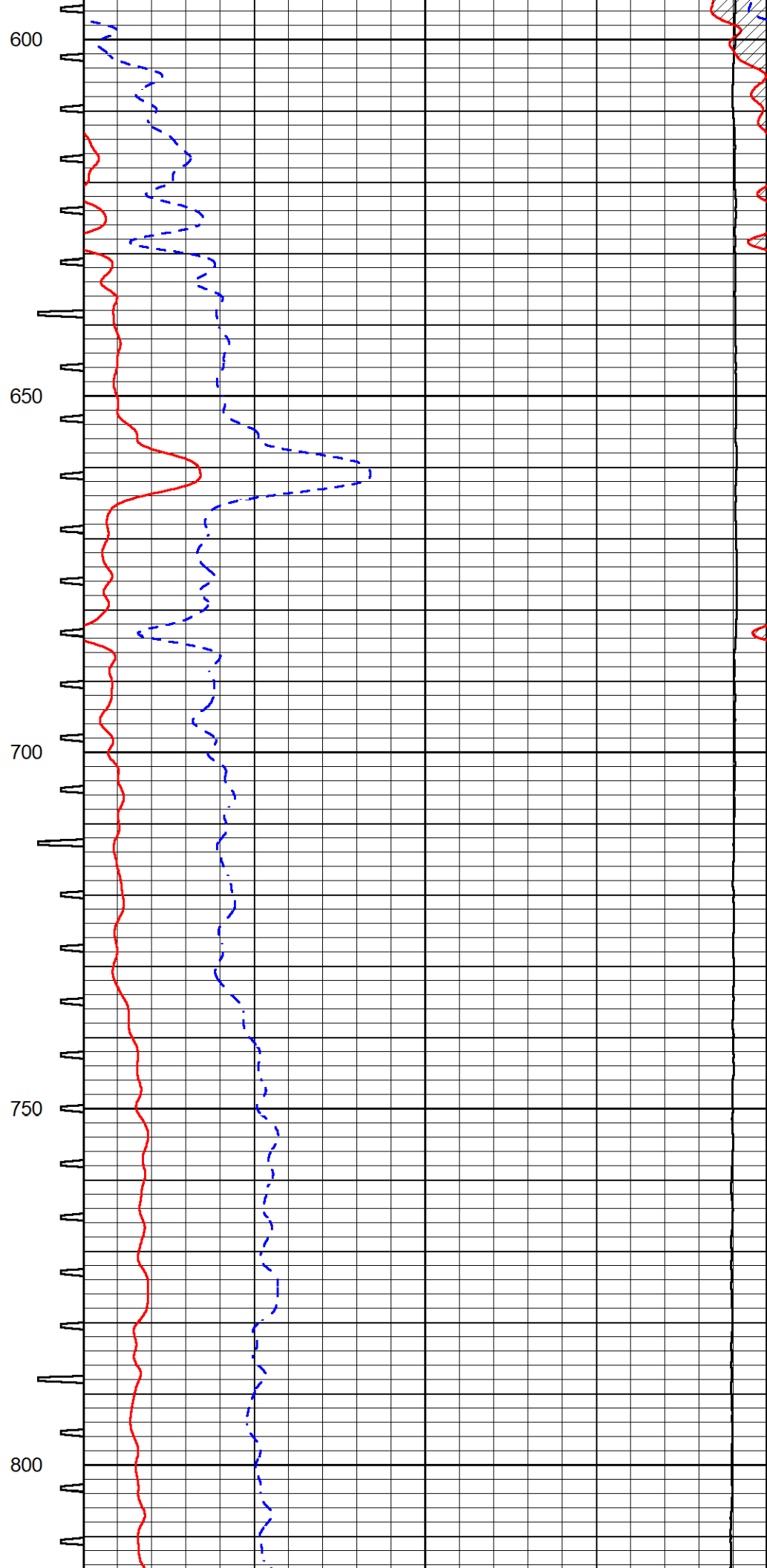
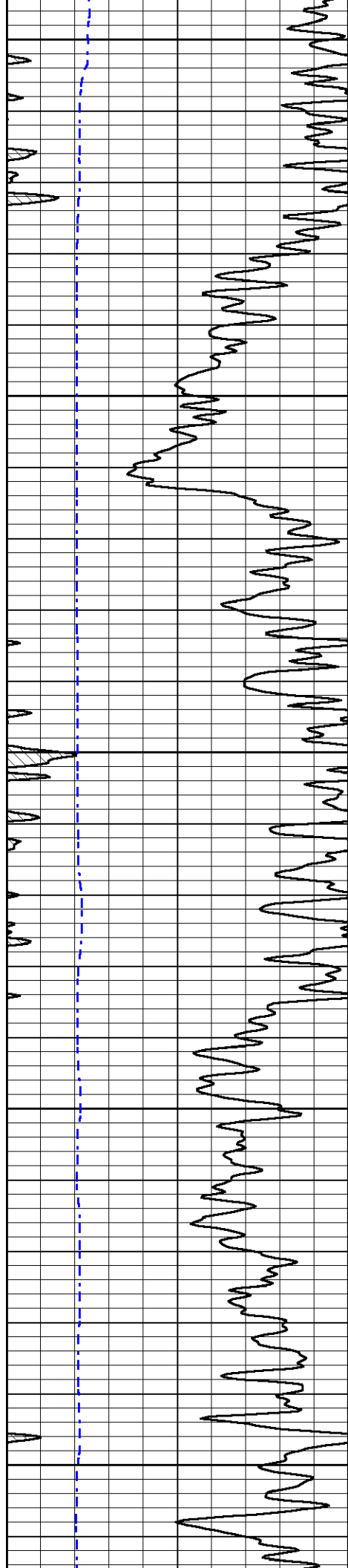
### MAIN PASS

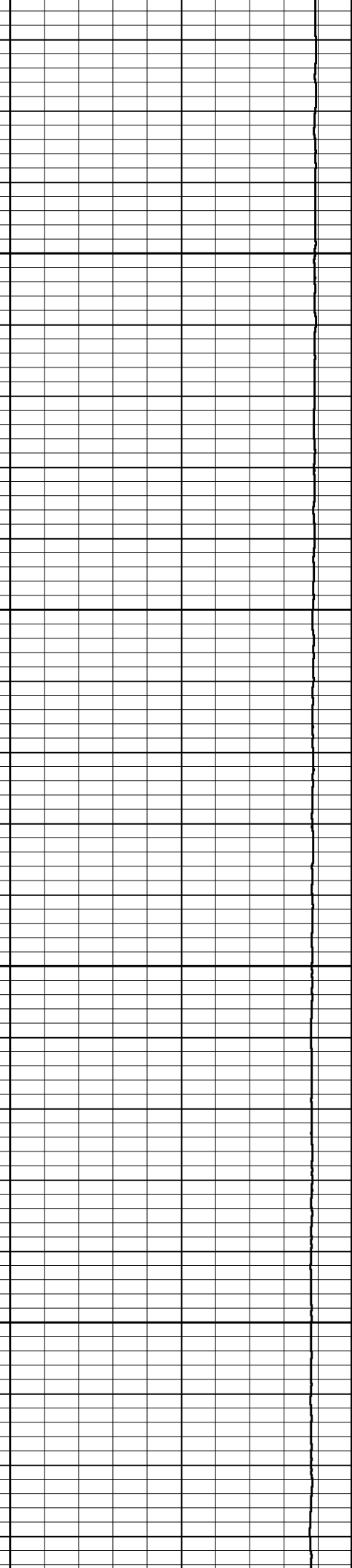
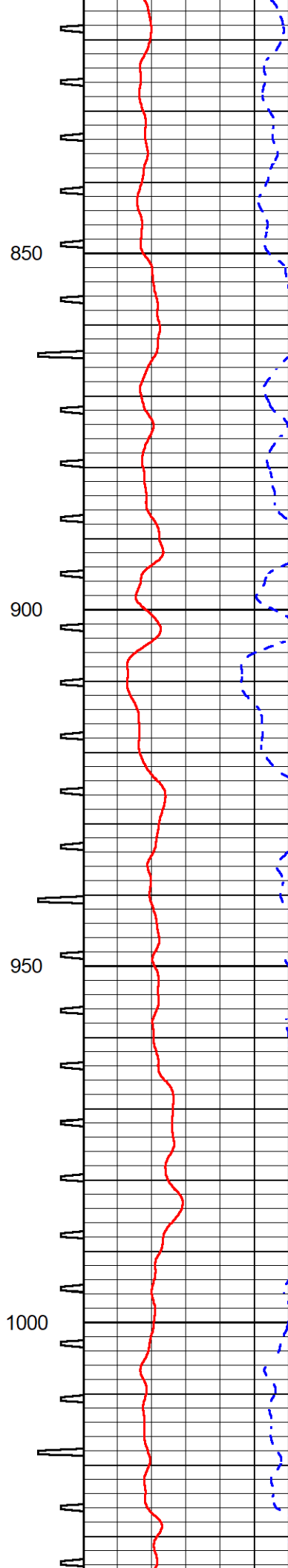
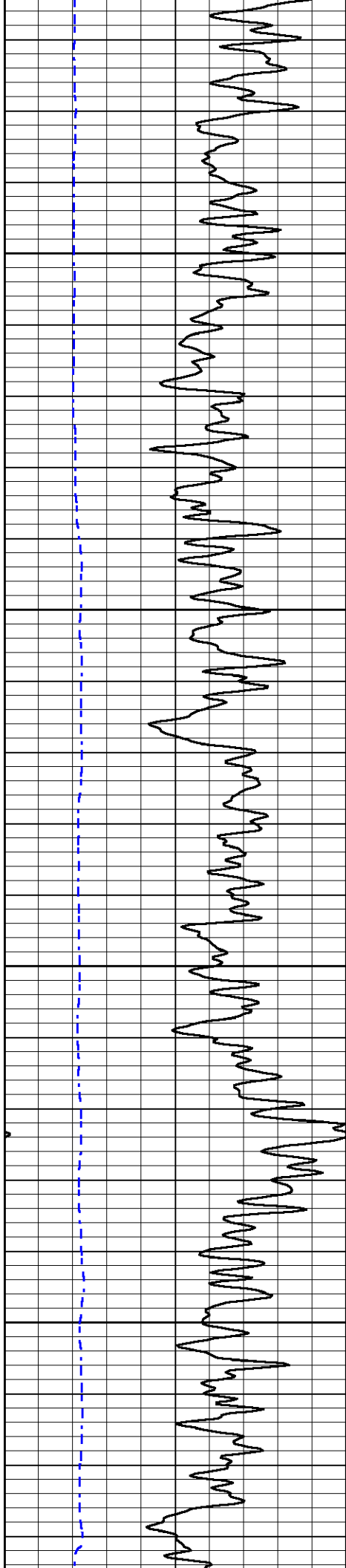
Database File amwar\_patricia #1-16.db  
 Dataset Pathname StkMI/pass3.1  
 Presentation Format \_sonic  
 Dataset Creation Tue Feb 06 18:24:43 2024  
 Charted by Depth in Feet scaled 1:240

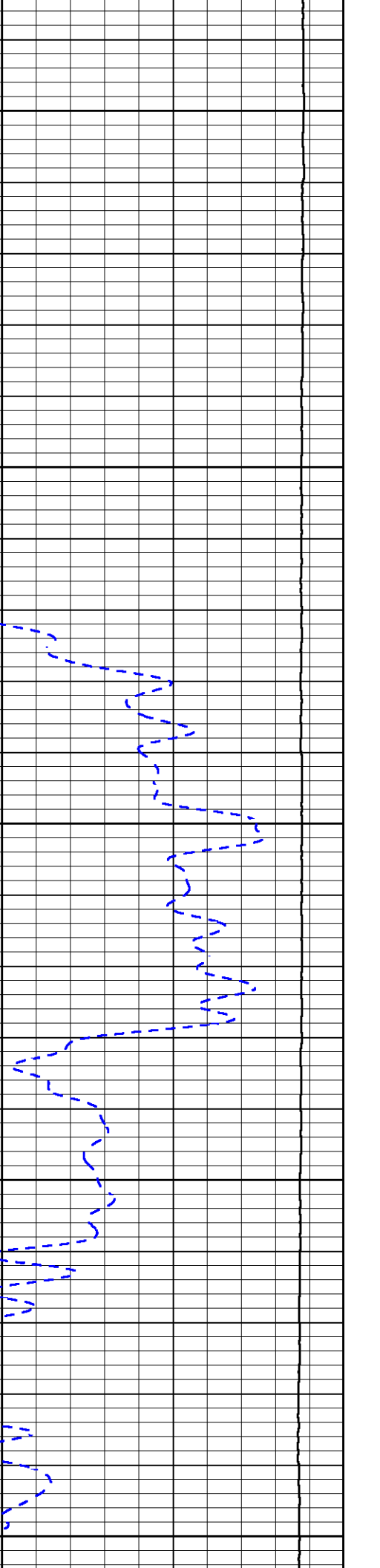
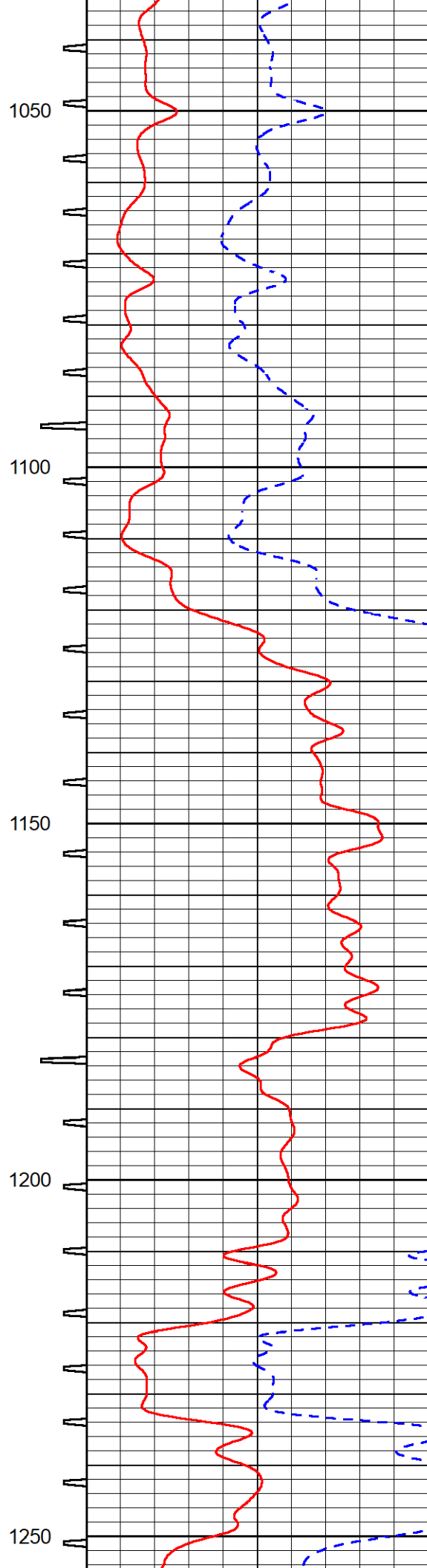
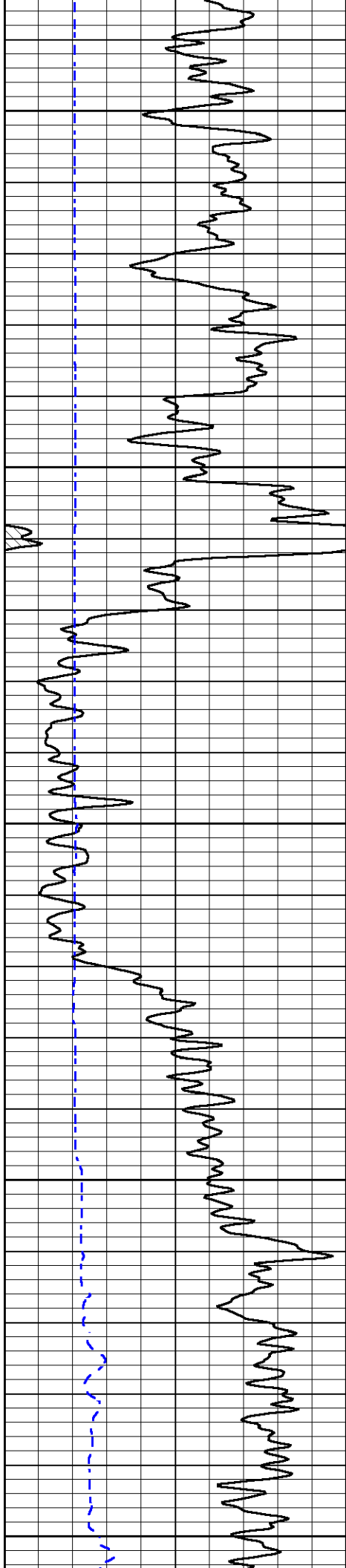
|     |                  |     |            |       |                                |     |
|-----|------------------|-----|------------|-------|--------------------------------|-----|
| 0   | Gamma Ray (GAPI) | 150 | Sonic Int  | 140   | Delta Time (usec/ft) (usec/ft) | 40  |
| 150 | GR (GAPI)        | 300 | 5 (msec) 0 | 30    | Sonic Porosity (pu) (pu)       | -10 |
| 6   | Caliper (in)     | 16  |            | 15000 | Line Tension (lb)              | 0   |

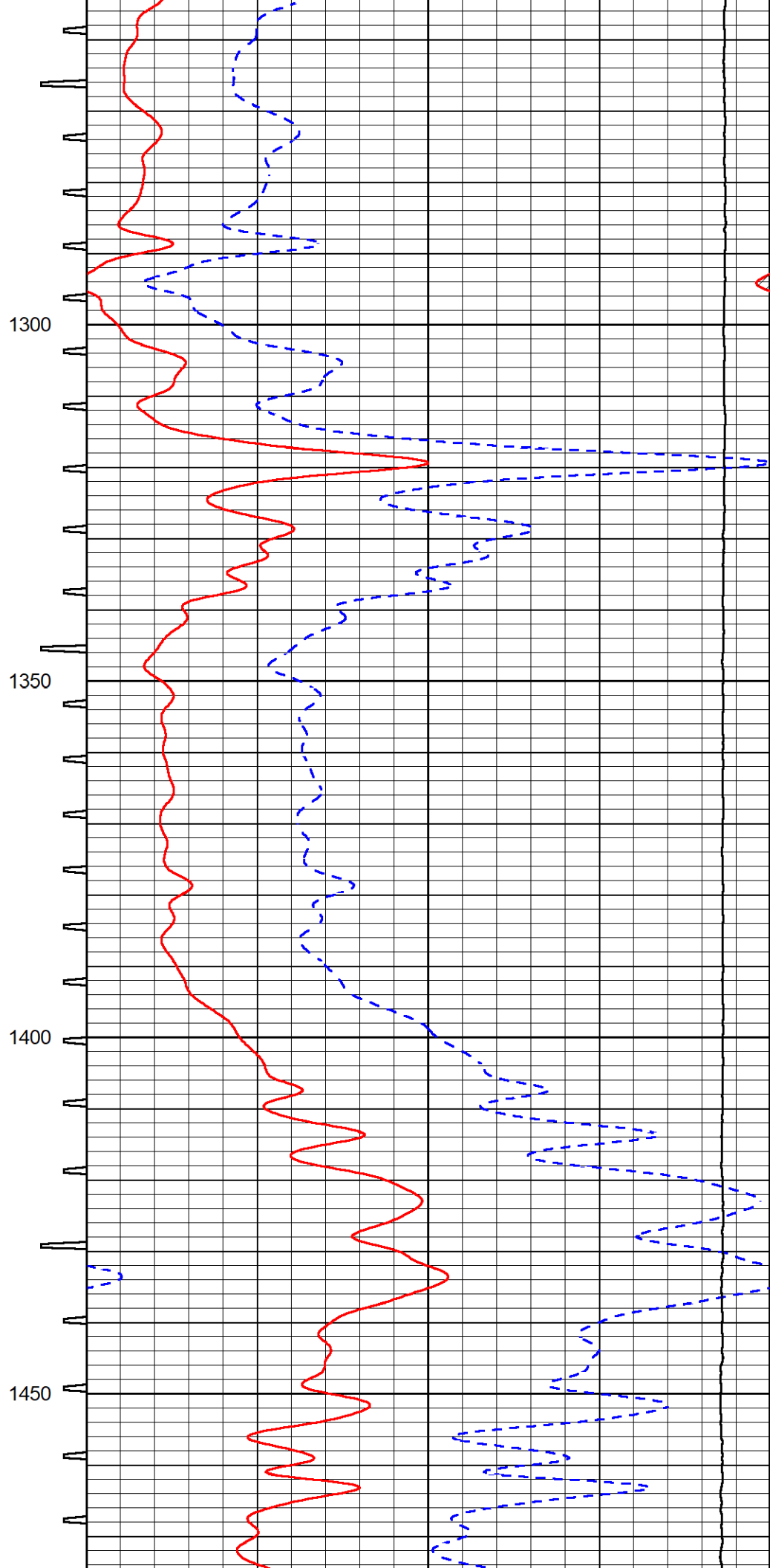
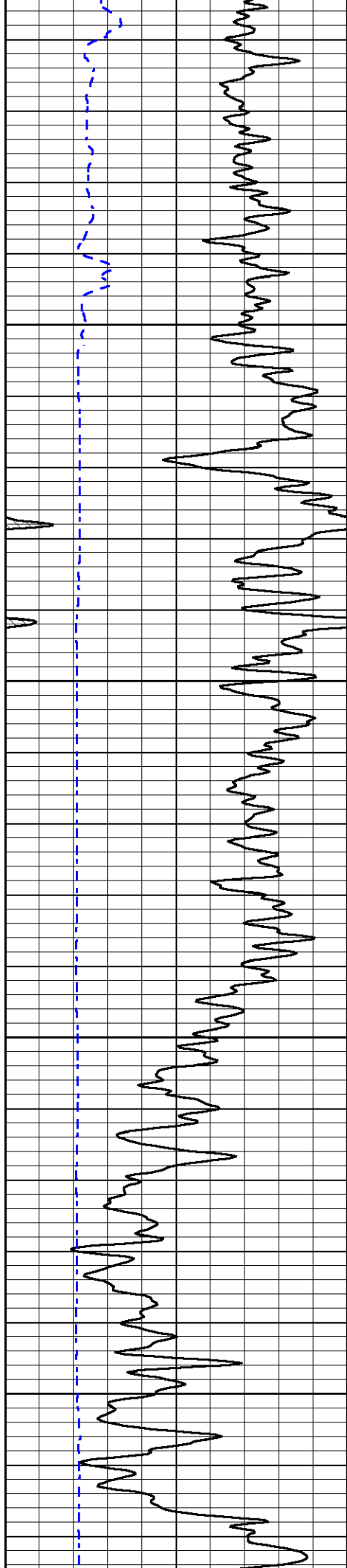










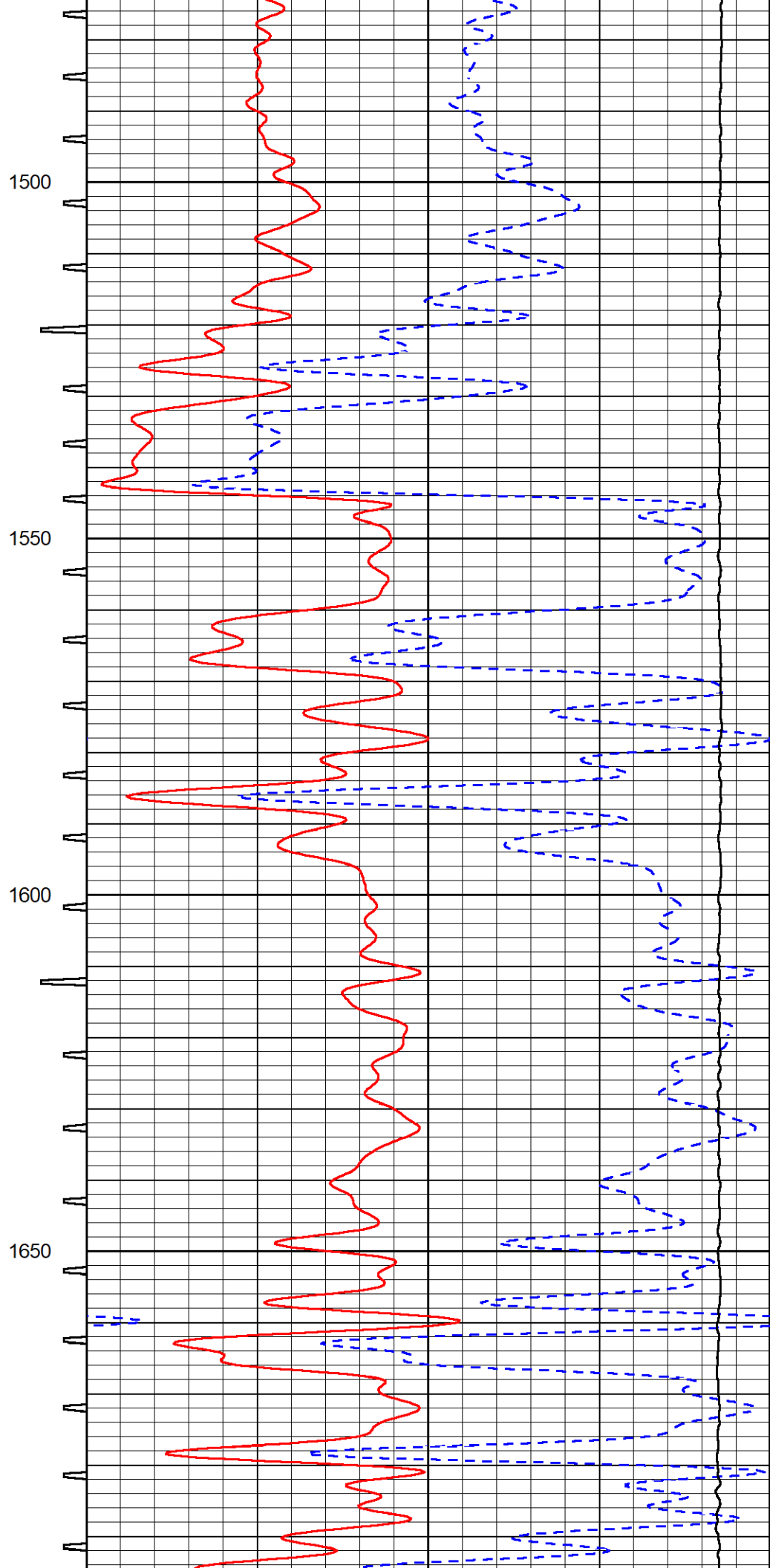
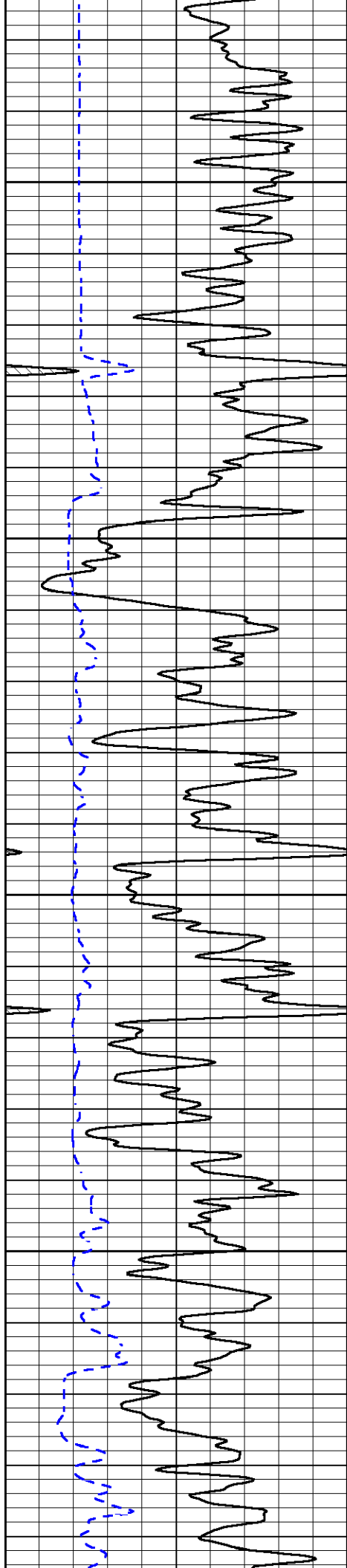


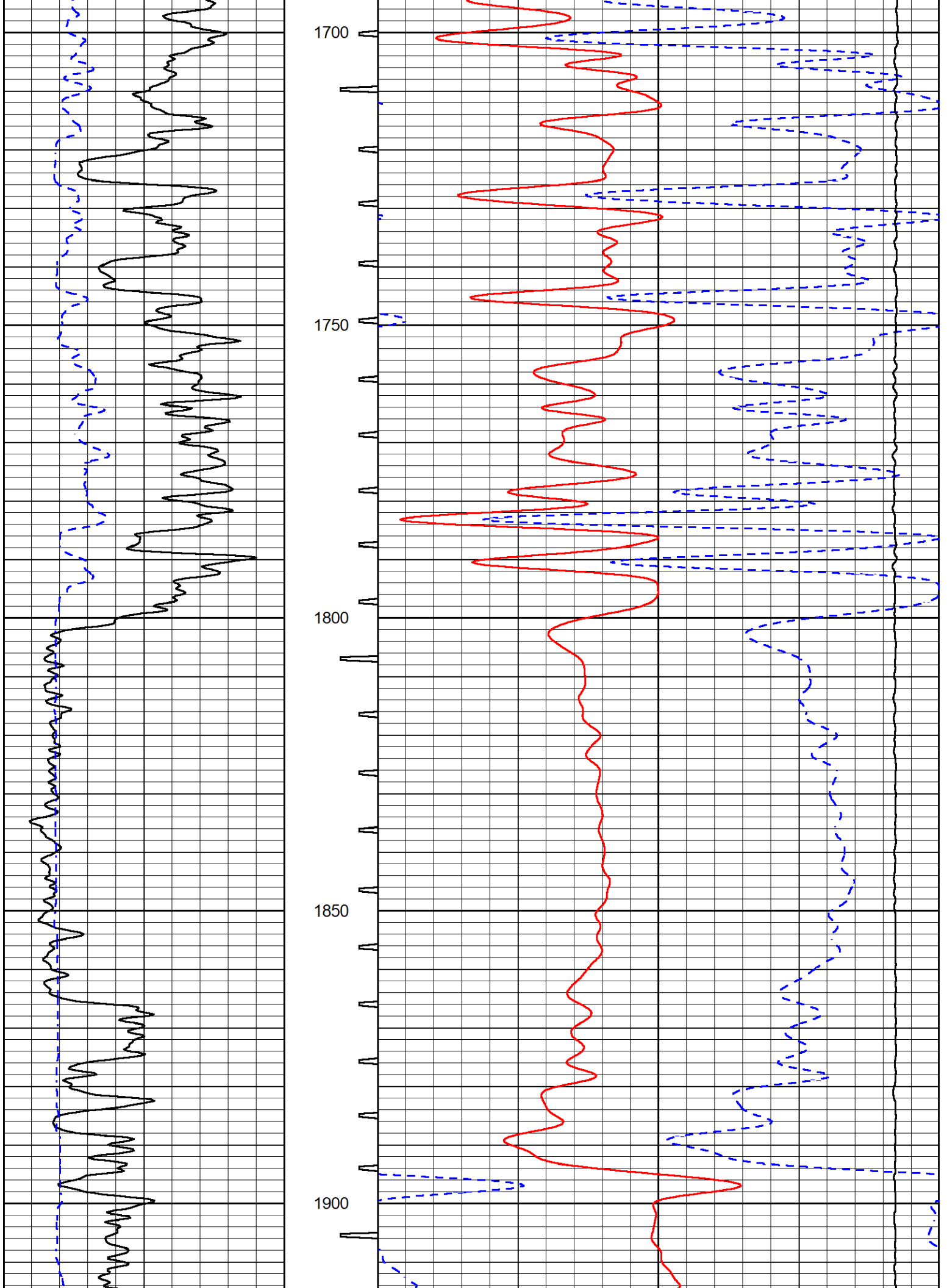
1300

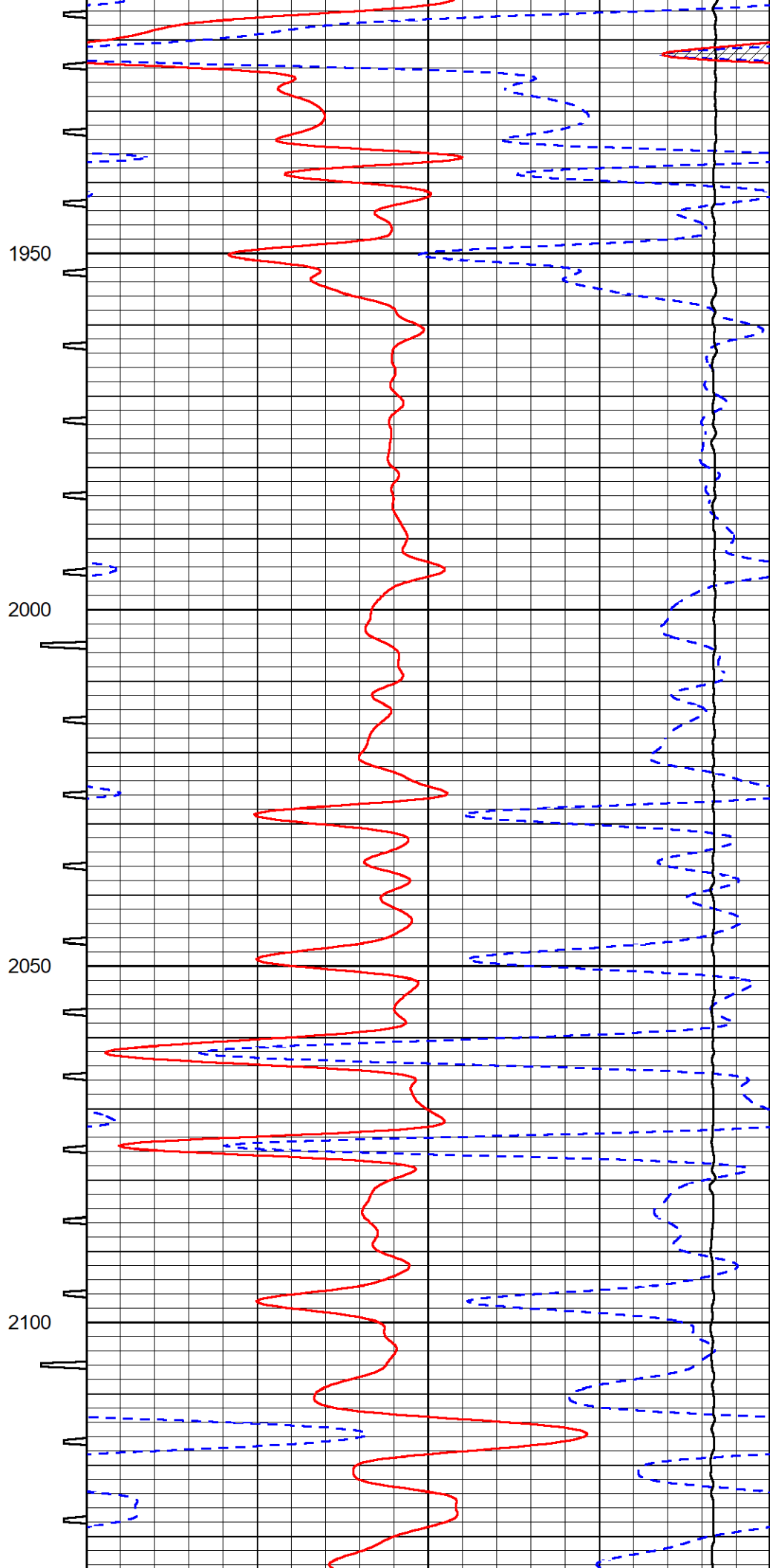
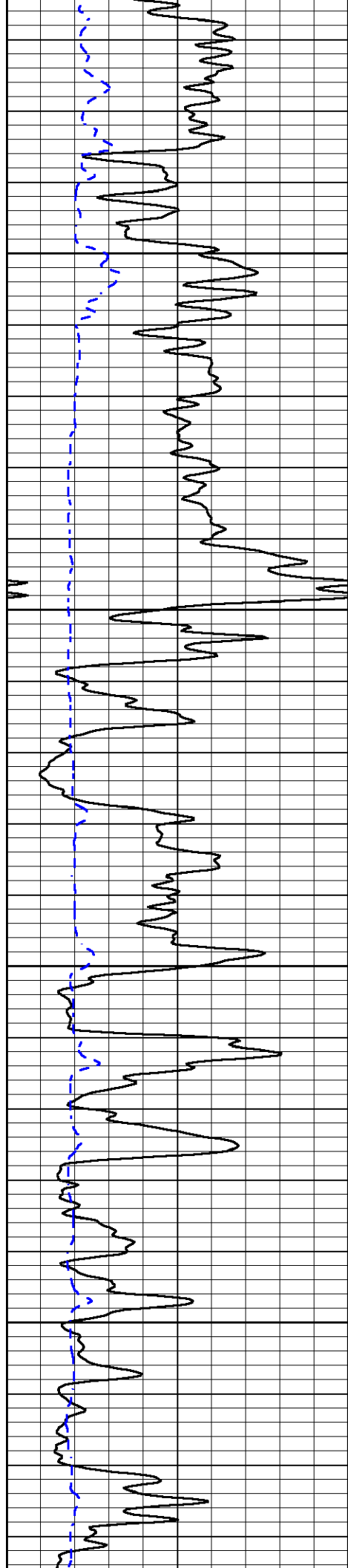
1350

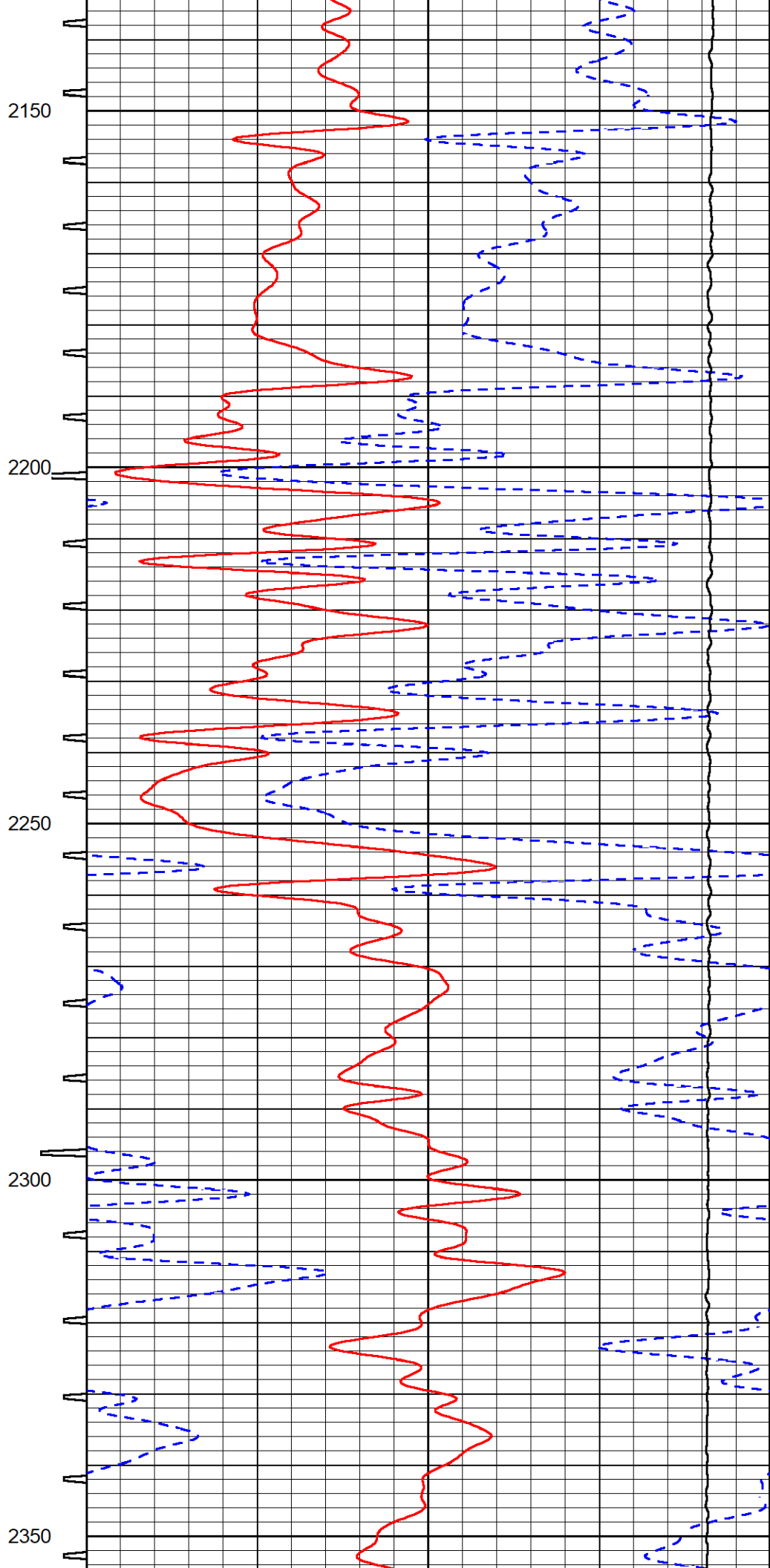
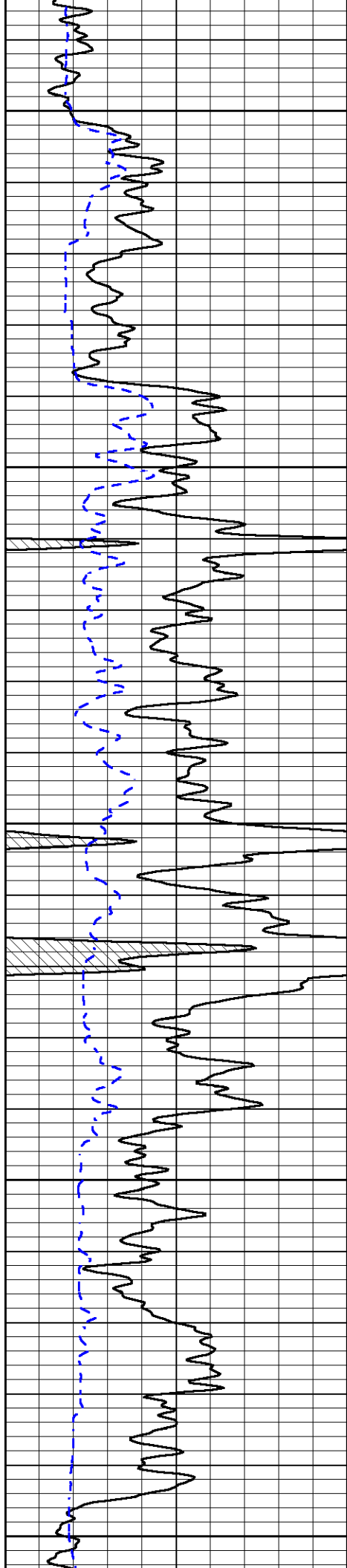
1400

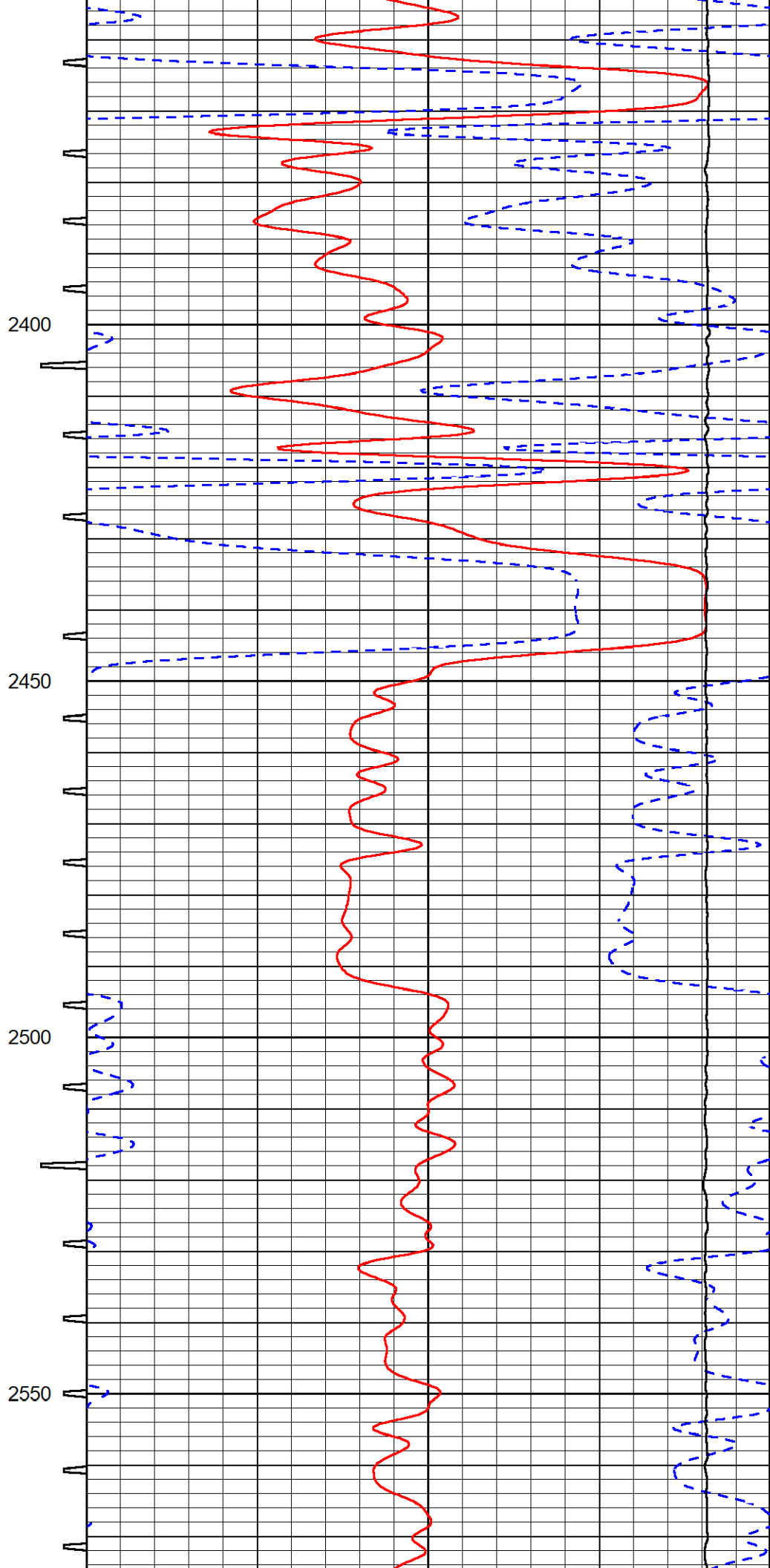
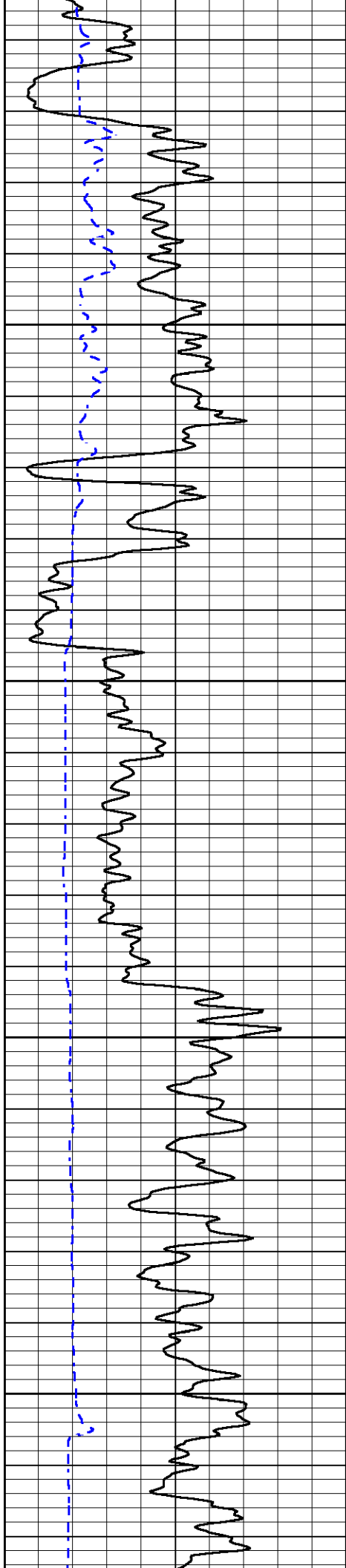
1450

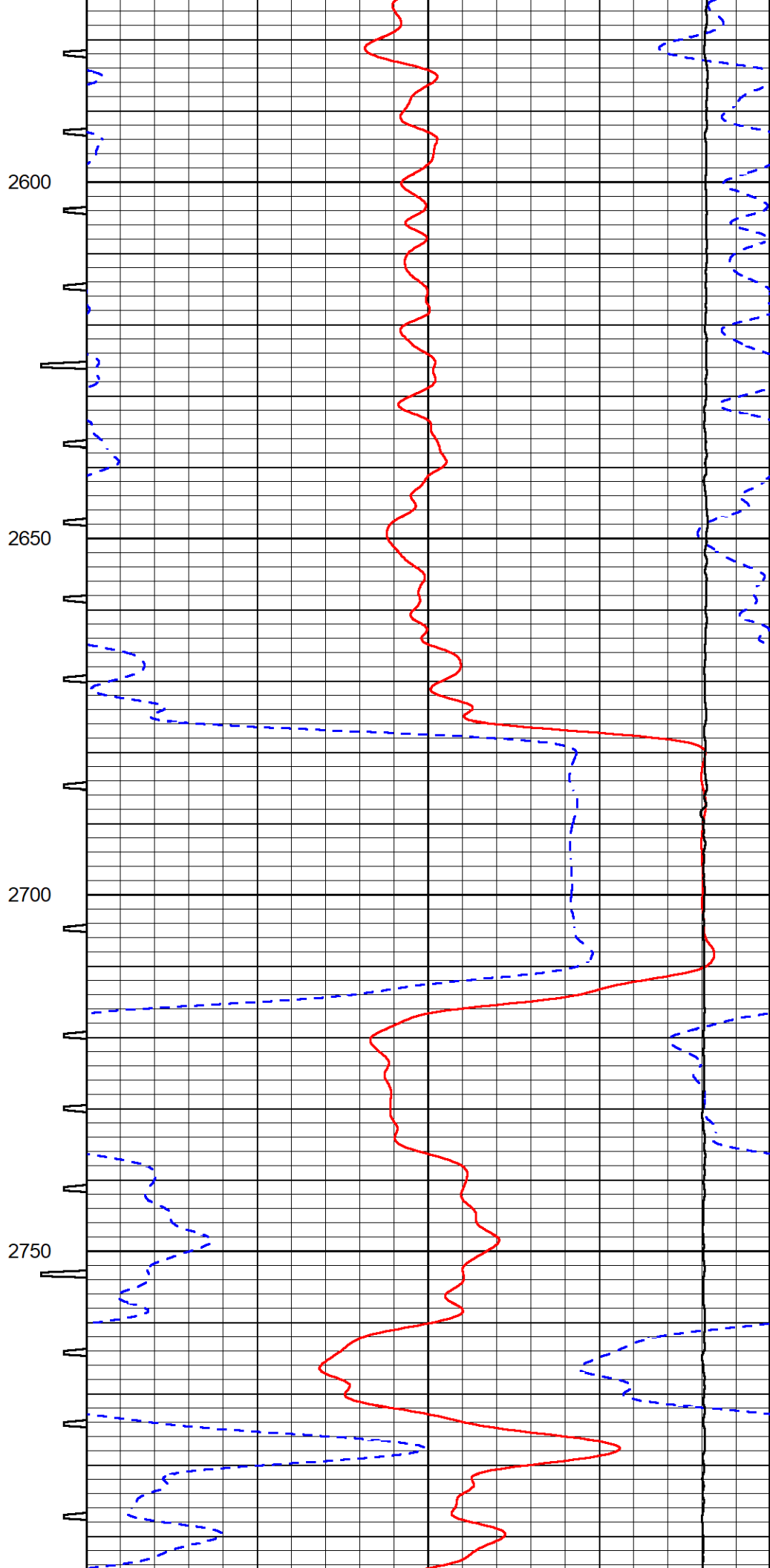
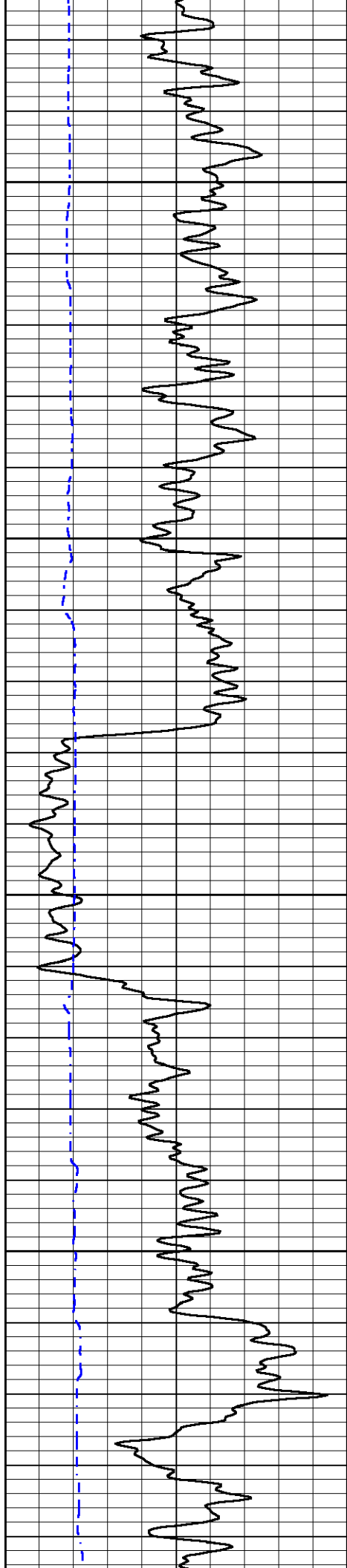


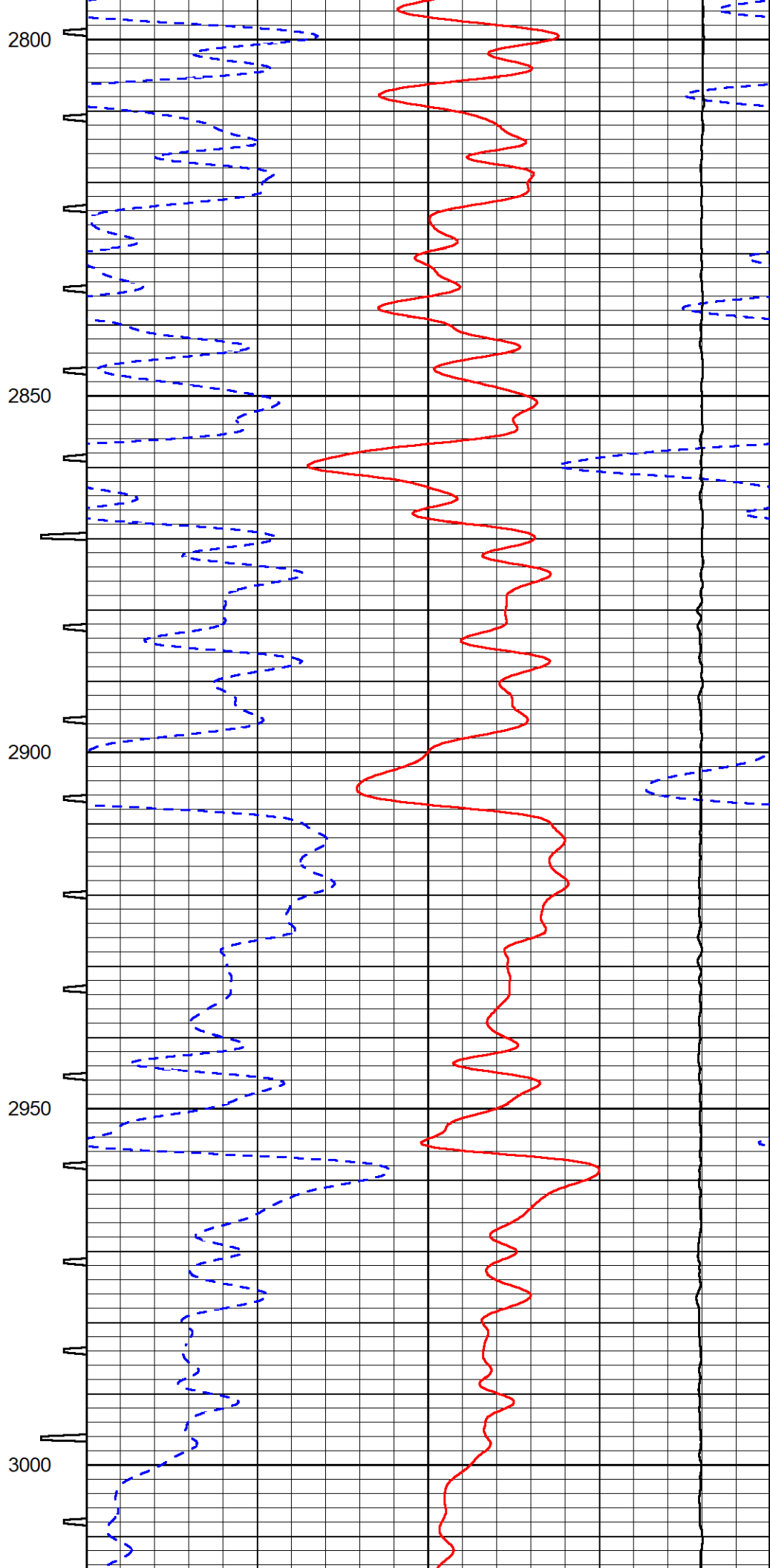
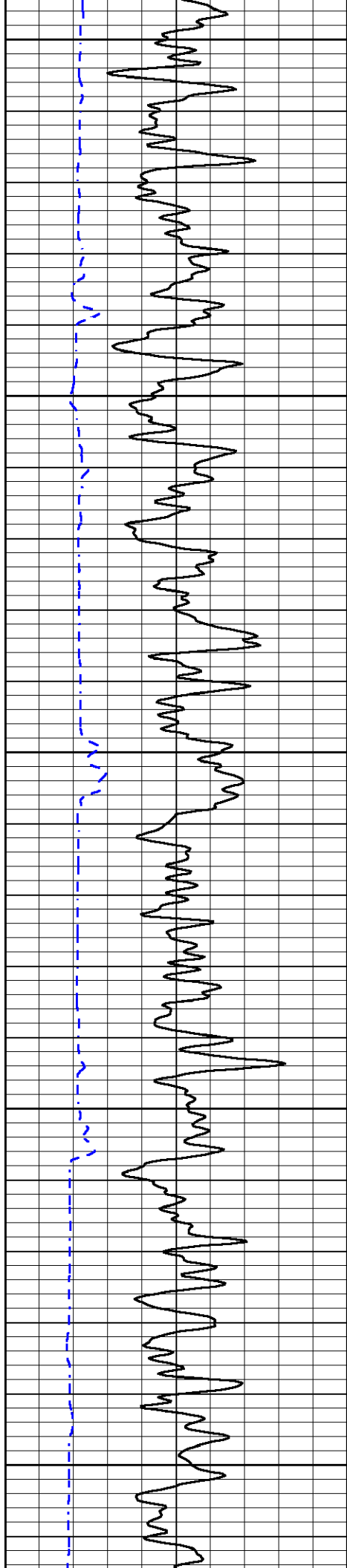


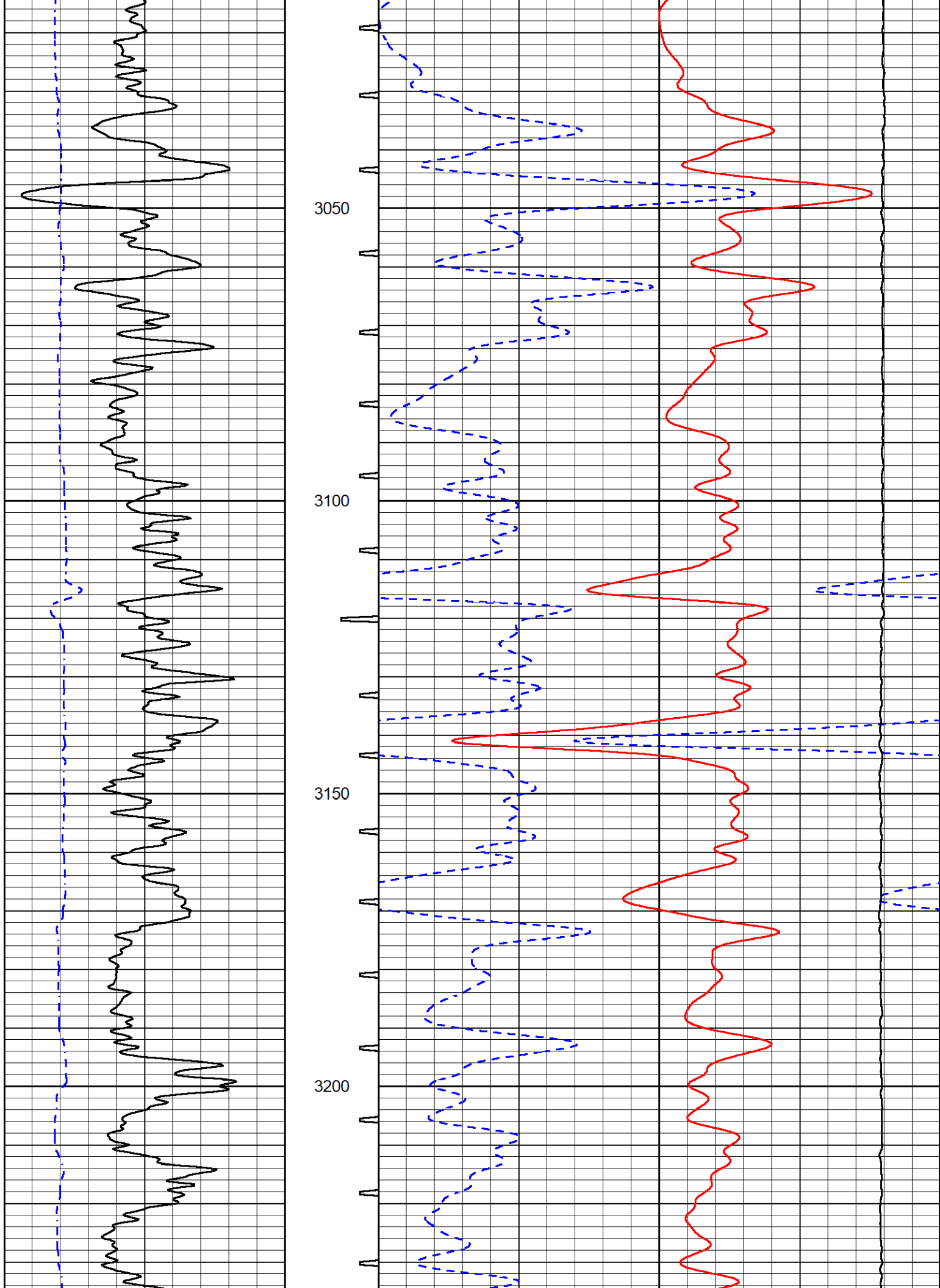


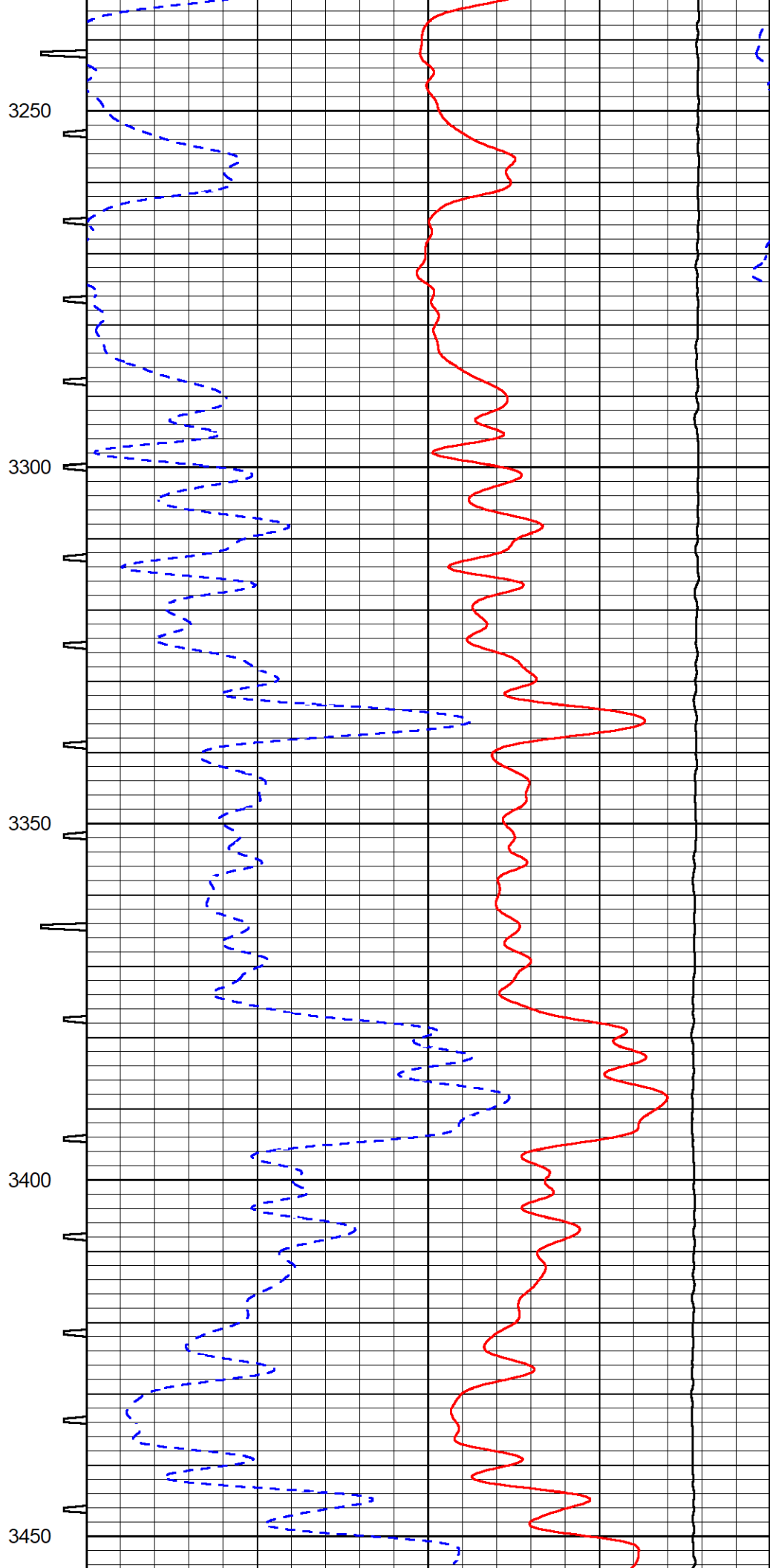
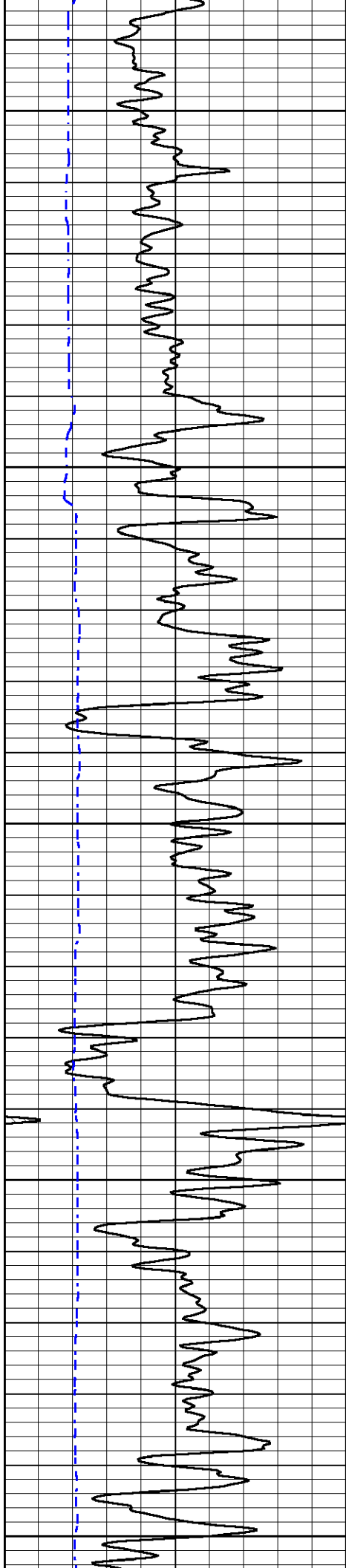


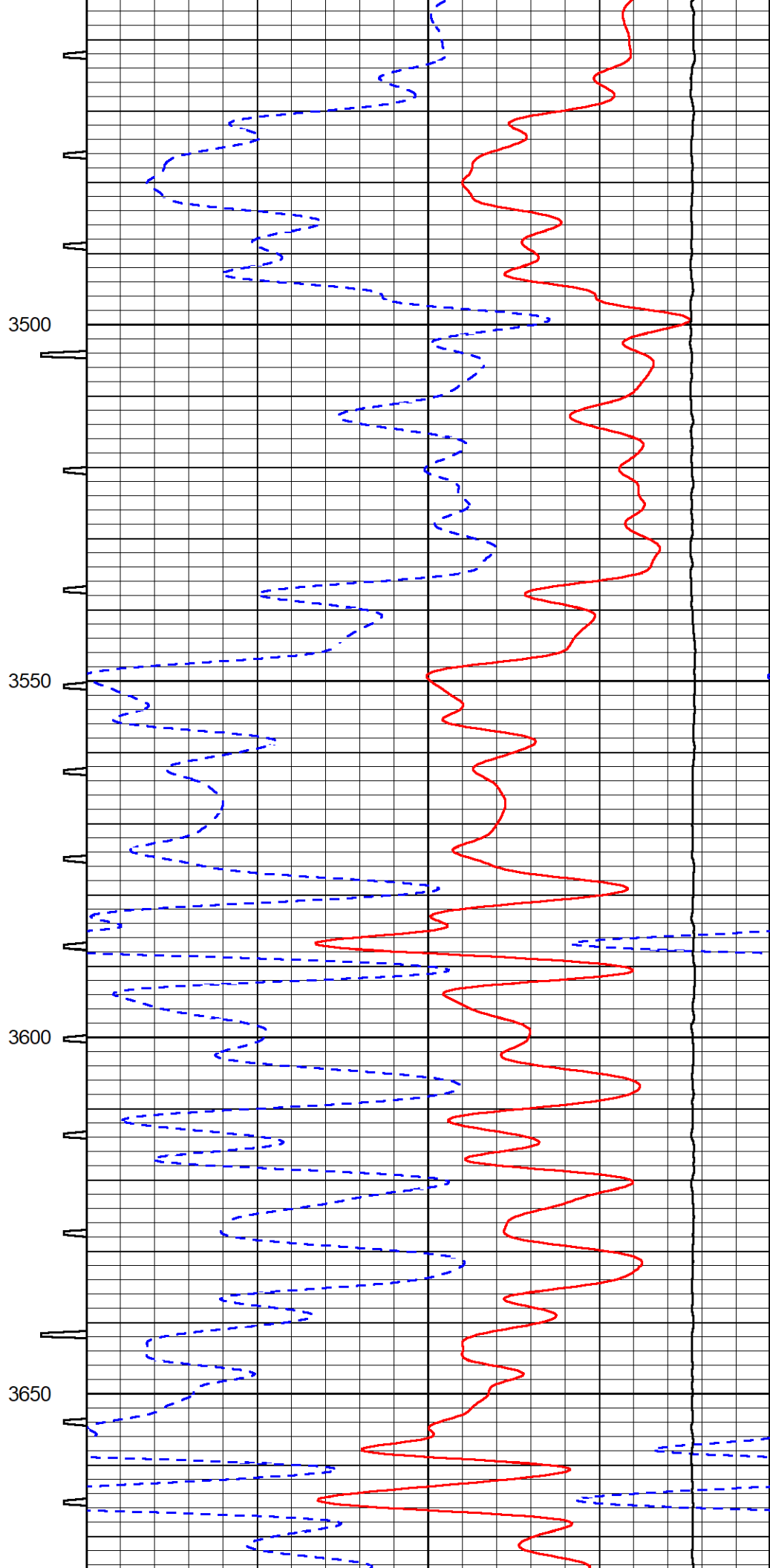
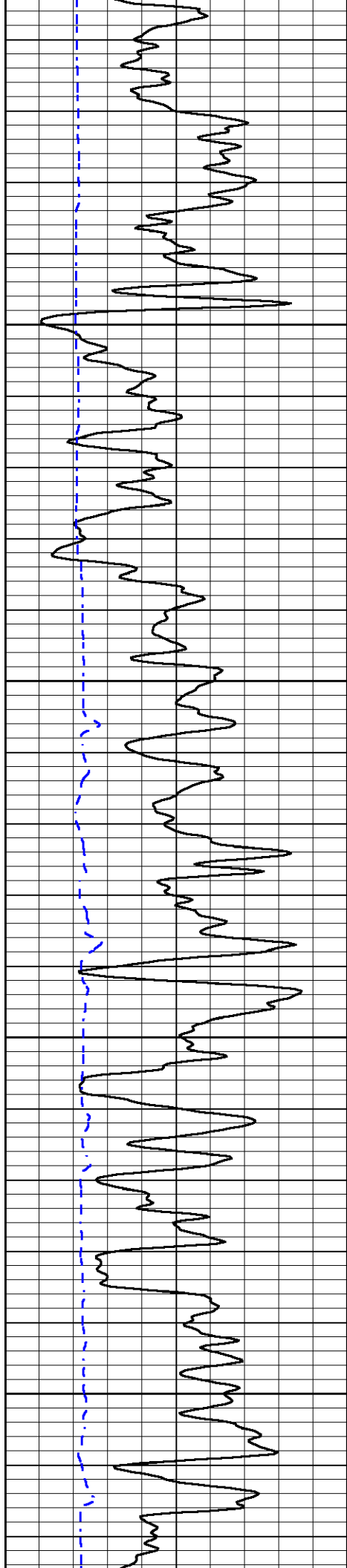


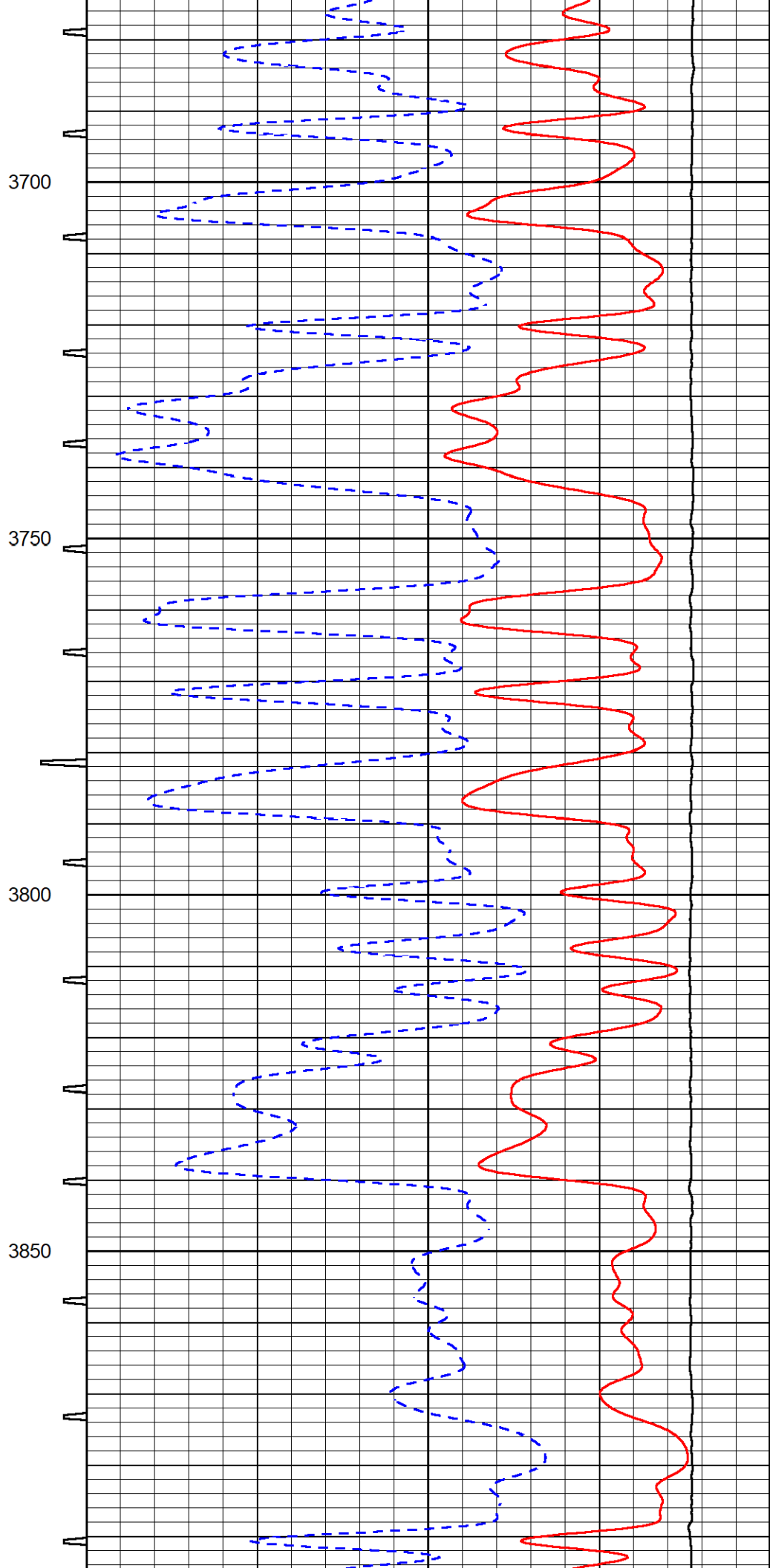
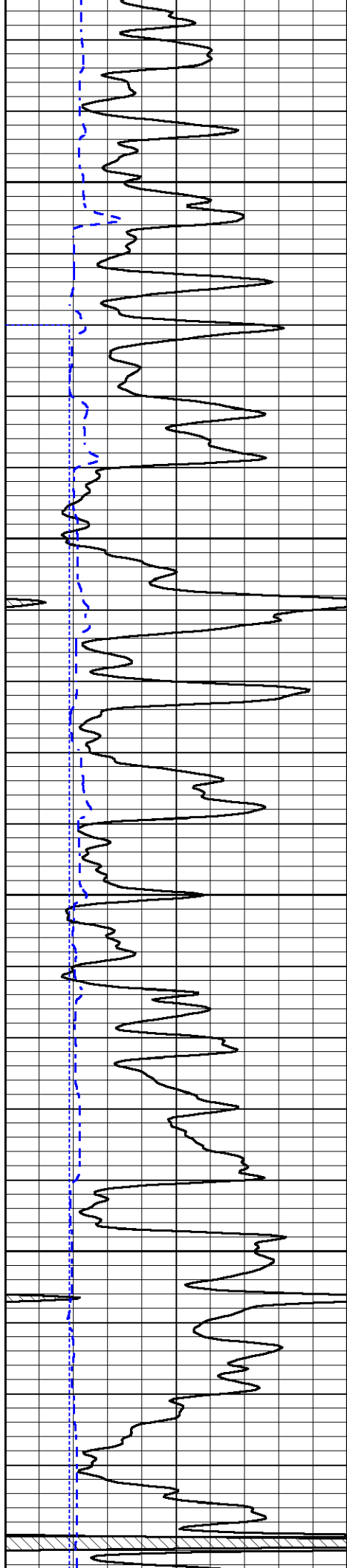


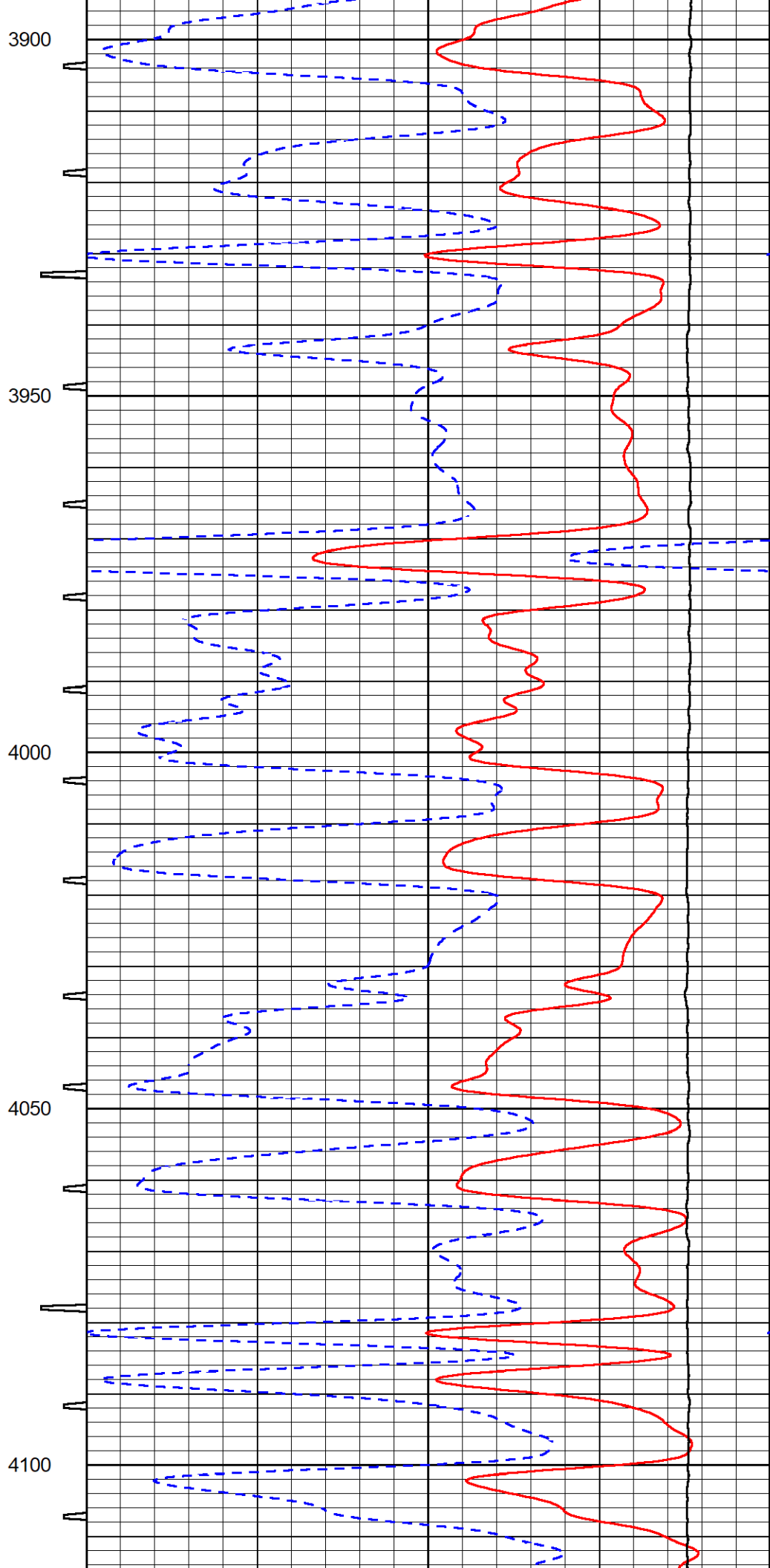
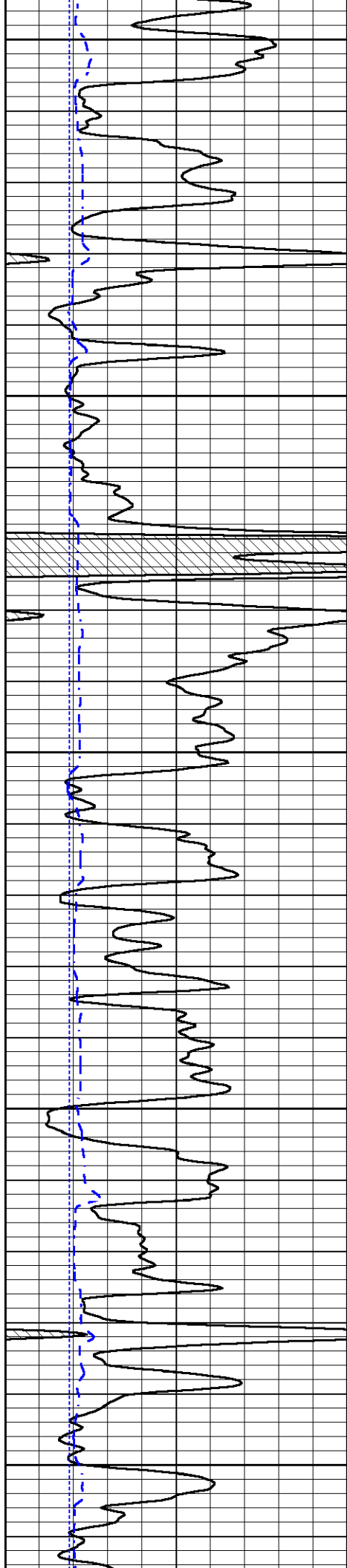


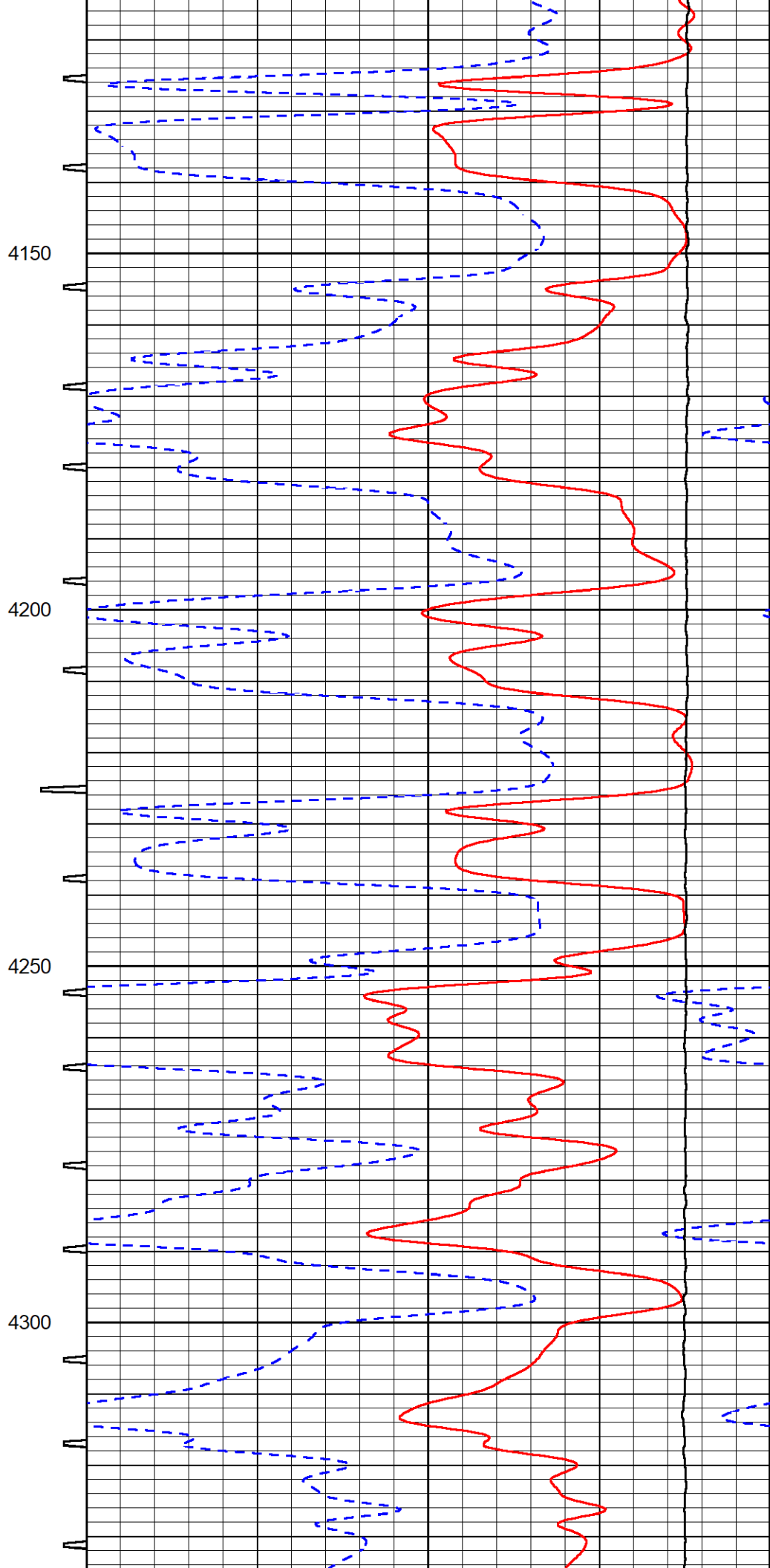
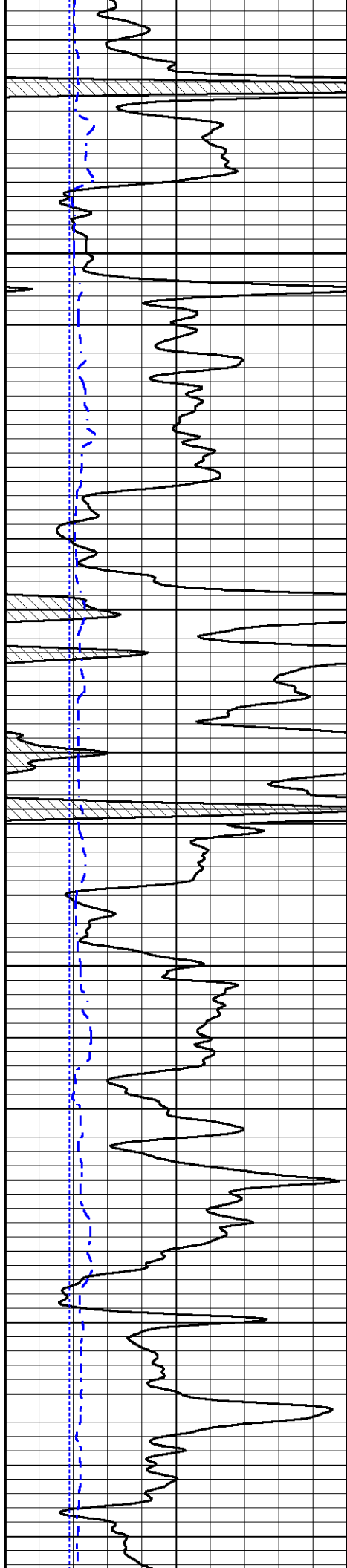


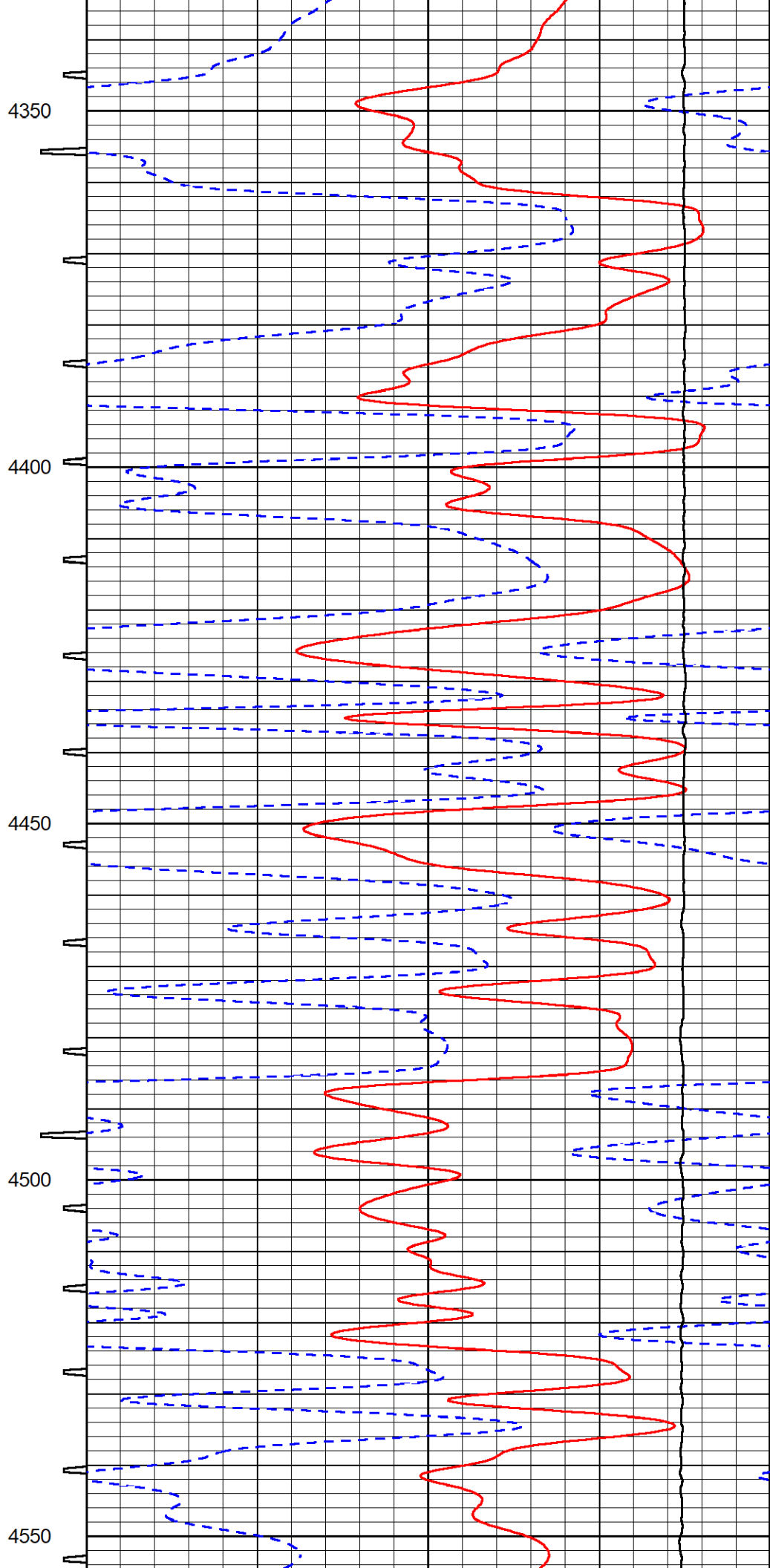
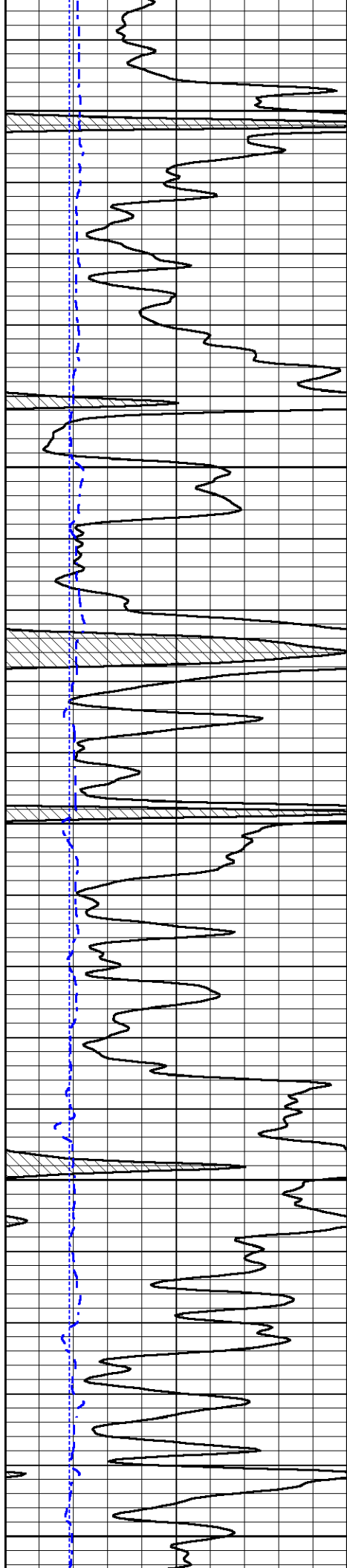


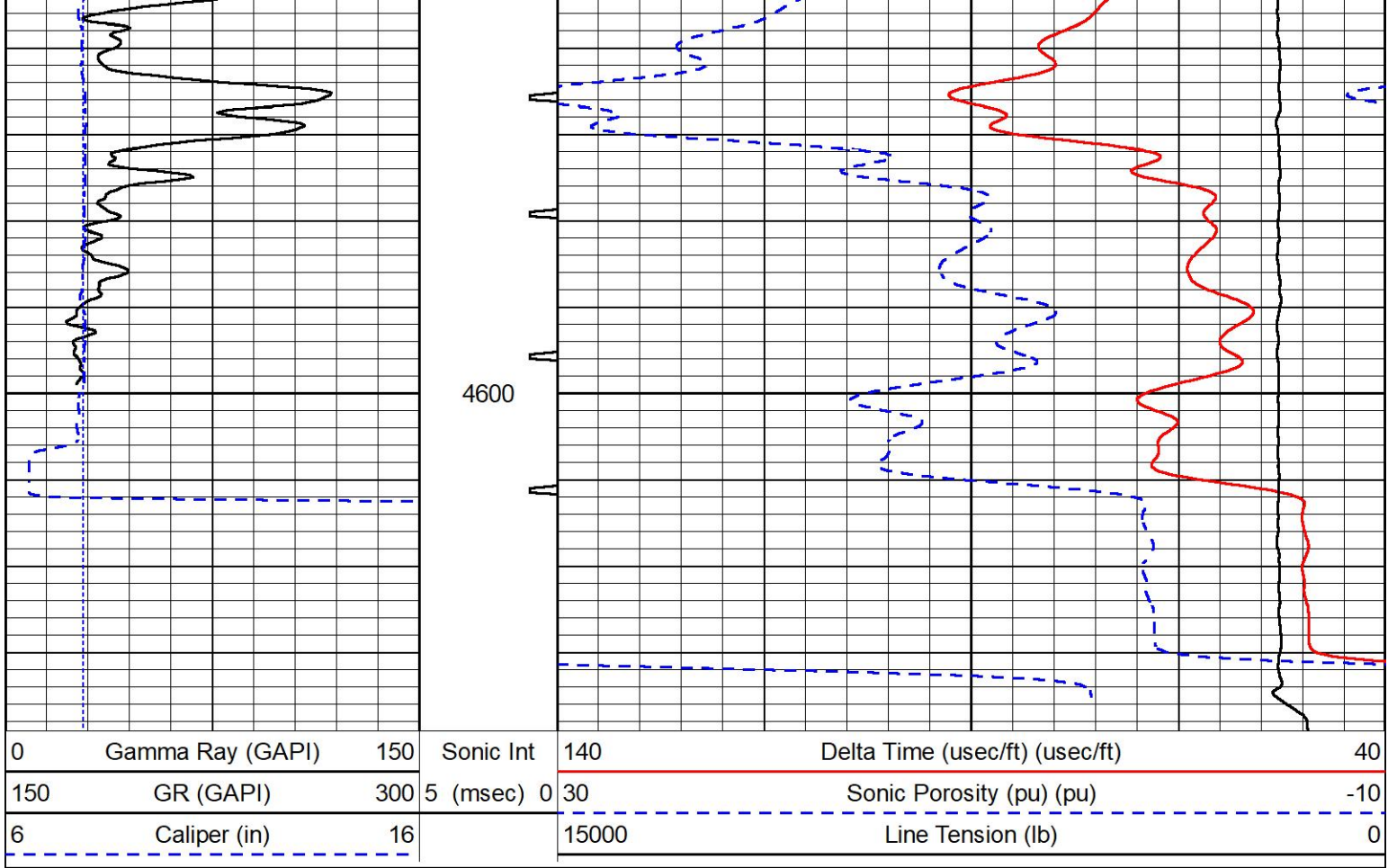












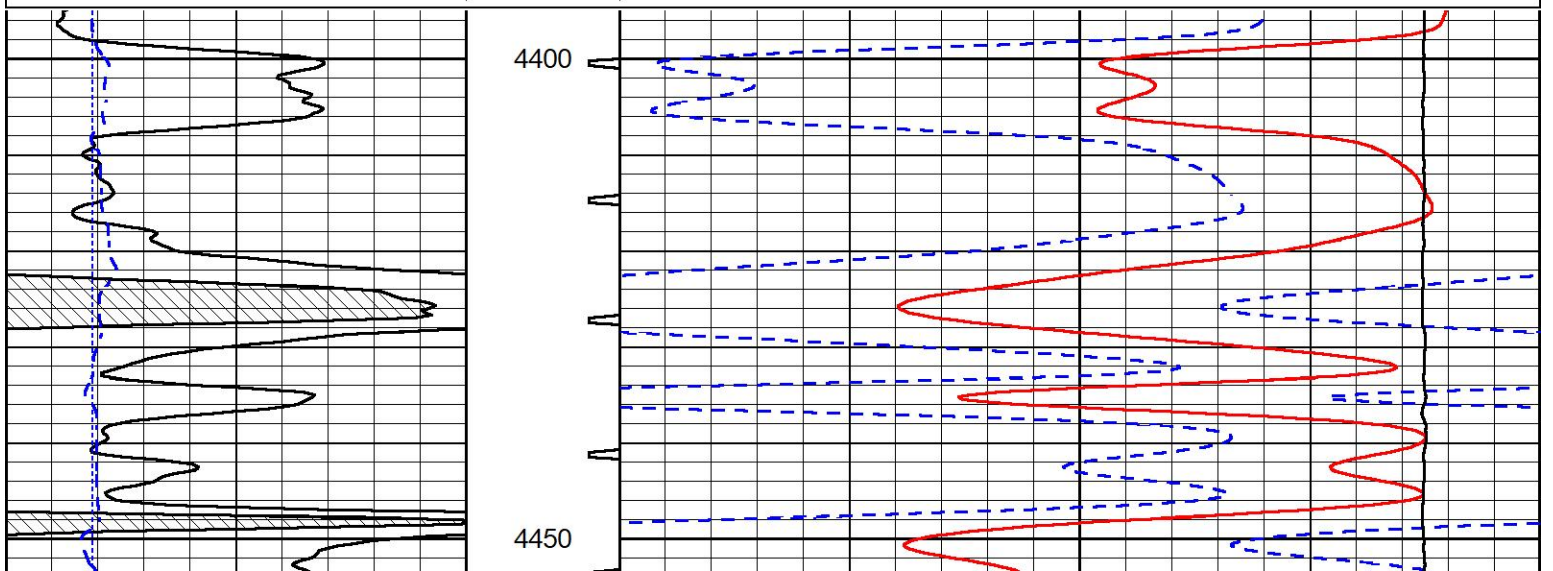
MIDWEST WIRELINE

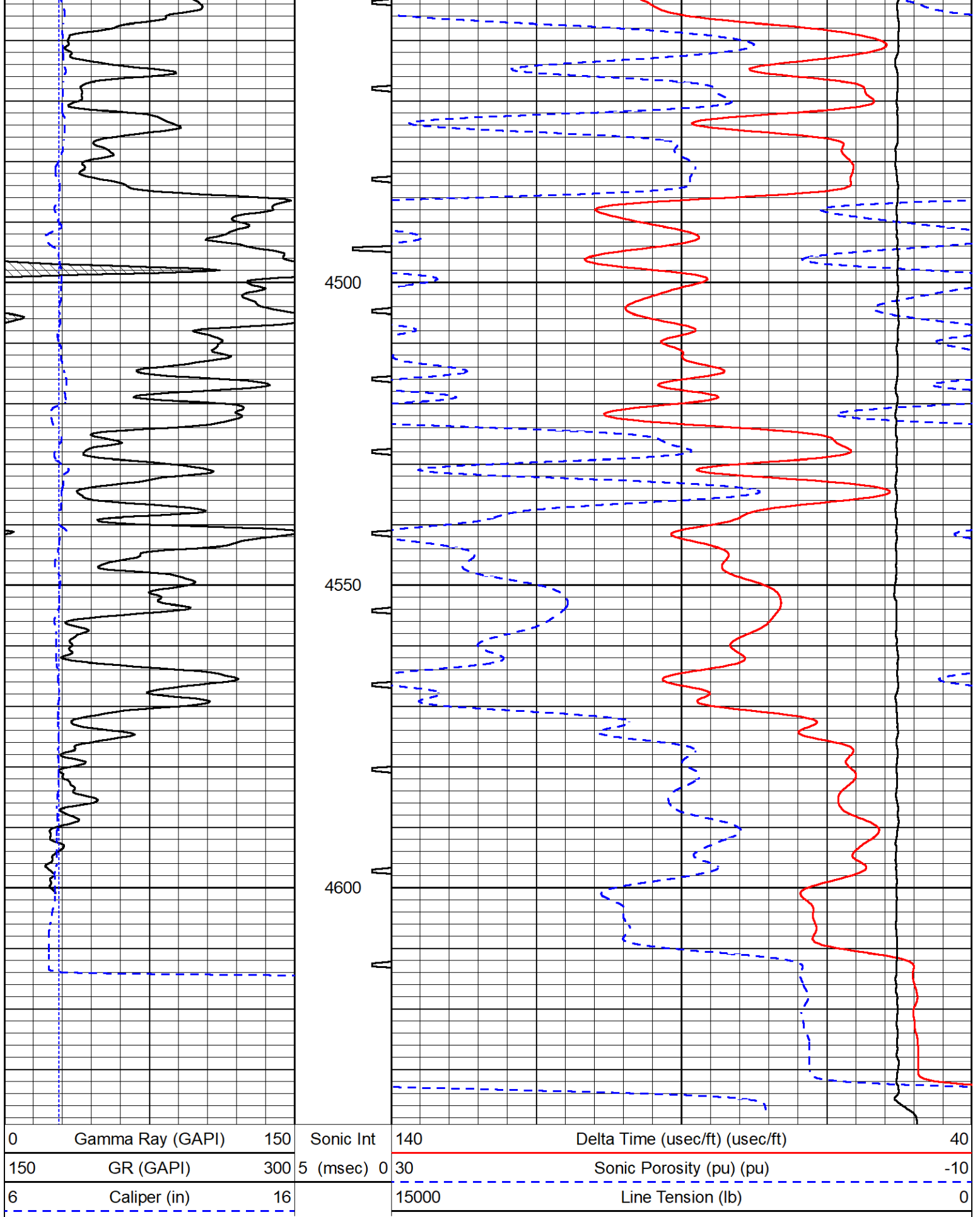
## REPEAT SECTION

### REPEAT PASS

Database File amwar\_patricia #1-16.db  
 Dataset Pathname StkMI/pass2.1  
 Presentation Format \_sonic  
 Dataset Creation Tue Feb 06 17:31:21 2024  
 Charted by Depth in Feet scaled 1:240

|     |                  |     |            |       |                                |     |
|-----|------------------|-----|------------|-------|--------------------------------|-----|
| 0   | Gamma Ray (GAPI) | 150 | Sonic Int  | 140   | Delta Time (usec/ft) (usec/ft) | 40  |
| 150 | GR (GAPI)        | 300 | 5 (msec) 0 | 30    | Sonic Porosity (pu) (pu)       | -10 |
| 6   | Caliper (in)     | 16  |            | 15000 | Line Tension (lb)              | 0   |





Company American Warrior, Inc.  
Well Patricia #1-16



MIDWEST WIRELINE

|        |         |
|--------|---------|
| Field  | Unnamed |
| County | Thomas  |
| State  | Kansas  |