



DUAL INDUCTION

MIDWEST WIRELINE

Company American Warrior, Inc.
 Well Patricia #1-16
 Field Unnamed
 County Thomas
 State Kansas

Company American Warrior, Inc.
 Well Patricia #1-16
 Field Unnamed
 County Thomas State Kansas

Location: API #: 15-193-21123-00-00
 NW SE NW SW
 1889 FSL & 811 FWL
 SEC 16 TWP 6S RGE 31W
 Permanent Datum Ground Level Elevation 2995
 Log Measured From Kelly Bushing
 Drilling Measured From Kelly Bushing
 Other Services
 CNL/CDL
 MEL/BHCS
 Elevation
 K.B. 3006
 D.F.
 G.L. 2995

Date	2/6/2024
Run Number	One
Depth Driller	4635
Depth Logger	4635
Bottom Logged Interval	4634
Top Log Interval	300
Casing Driller	8.625 @ 333
Casing Logger	336
Bit Size	7.875
Type Fluid in Hole	Chemical
Salinity, ppm CL	2300
Density / Viscosity	9.2 58
pH / Fluid Loss	10.5 6.4
Source of Sample	Flowline
Rm @ Meas. Temp	0.85 @ 68
Rmt @ Meas. Temp	0.64 @ 68
Rmc @ Meas. Temp	1.15 @ 68
Source of Rmf / Rmc	Charts
Rm @ BHT	0.47 @ 122
Operating Rig Time	4 Hours
Max Rec. Temp. F	122
Equipment Number	P-24
Location	Hays
Recorded By	T. Martin
Witnessed By	Marc Downing

<<< Fold Here >>>

All interpretations are opinions based on inferences from electrical or other measurements and Midwest Wireline LLC cannot and does not guarantee the accuracy or correctness of any interpretation, and Midwest Wireline LLC will not be liable or responsible for any loss, costs, damages, or expenses incurred or sustained by anyone resulting from any interpretation made by any of our officers, agents or employees.

Comments

N/A DENOTES NOT AVAILABLE OR NON-APPLICABLE.

Rexford, KS, 5 N to CC Rd,
 3 W to 33, 3/4 S, E into

Log Measured From: Kelly Bushing 11 Ft. Above Permanent Datum

THANK YOU FOR USING MIDWEST WIRELINE LLC
 785-625-3858

Your Midwest Wireline Crew	This Log Record Was Witnessed By
Engineer: T. Martin	Primary Witness: Marc Downing
Operator:	Secondary Witness:
Operator:	Secondary Witness:
Operator:	Secondary Witness:

Log Variables

DatabaseC:\ProgramData\Warrior\Data\amwar_patricia #1-16.db
 Dataset field/well/StkMI/pass3.12/_vars_

Top - Bottom

BOREID in 7.875	BOTTEMP degF 122	CASEOD in 5.5	CASETHCK in 0	FLUIDDEN g/cc 1	MATRXDEN g/cc 2.71	NPORSEL Limestone	PERFS No
SNDERR mmho/m 1	SNDERRM mmho/m 3	SPSHIFT mV 0	SRFTEMP degF 50	SZCOR Off	TDEPTH ft 4635		

Variable Description

BOREID : Borehole I.D.
 BOTTEMP : Bottom Hole Temperature
 CASEOD : Casing O.D.
 CASETHCK : Casing Thickness
 FLUIDDEN : Fluid Density
 MATRXDEN : Matrix Density
 NPORSEL : Neutron Porosity Curve Select

PERFS : Perforation Flag
 SNDERR : Deep Sonde Error Correction
 SNDERRM : Medium Sonde Error Correction
 SPSHIFT : S.P. Baseline Offset
 SRFTEMP : Surface Temperature
 SZCOR : CN Size Cor. ?
 TDEPTH : Total Depth

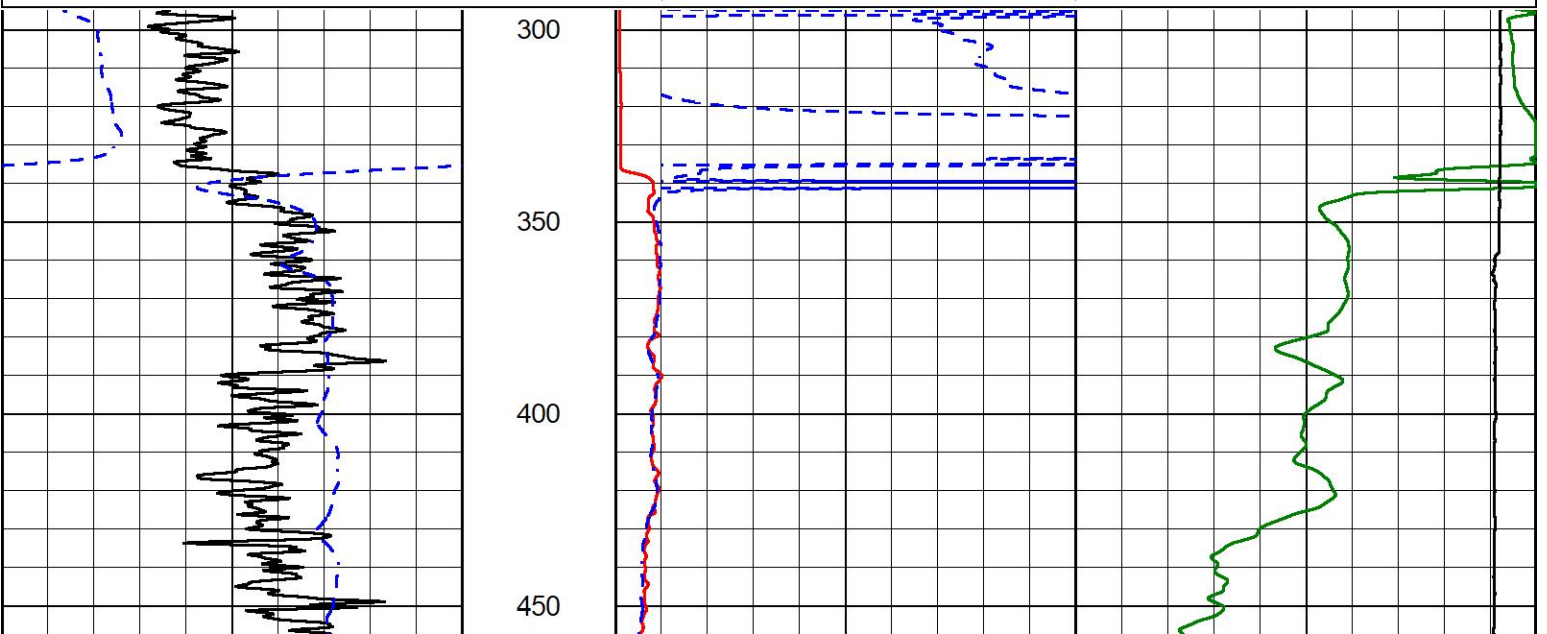


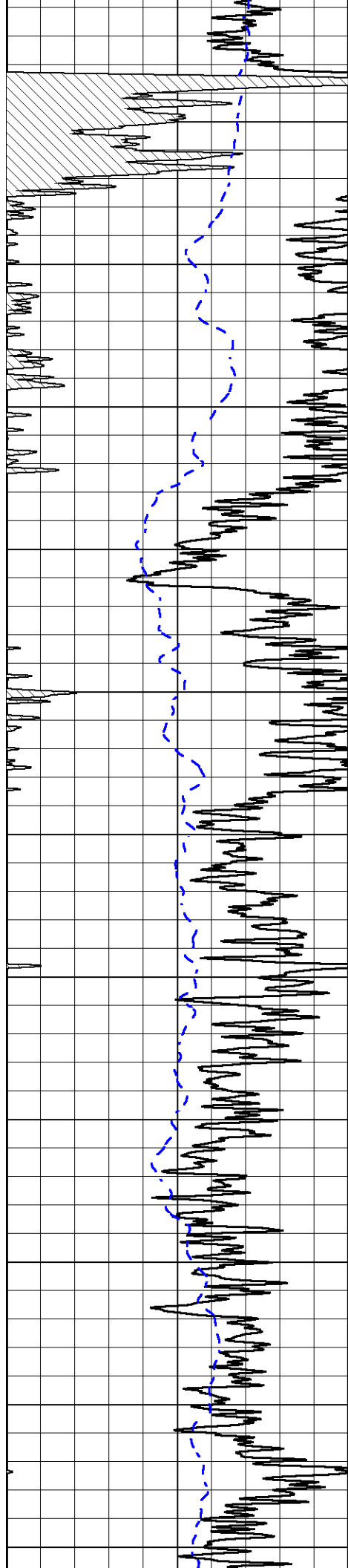
2" SCALE RESISTIVITY

MAIN PASS

Database File amwar_patricia #1-16.db
 Dataset Pathname StkMI/pass3.2
 Presentation Format _dil2in
 Dataset Creation Tue Feb 06 18:24:33 2024
 Charted by Depth in Feet scaled 1:600

0	Gamma Ray (GAPI)	150	1000	Conductivity (mmho/m)	0
-200	SP (mV)	0	15000	Line Tension (lb)	0
			0	RLL3 (Ohm-m)	50
			0	Deep Resistivity (Ohm-m)	50
			50	RLL3 (Ohm-m)	200
			50	Deep Resistivity (Ohm-m)	200





500

550

600

650

700

750

800

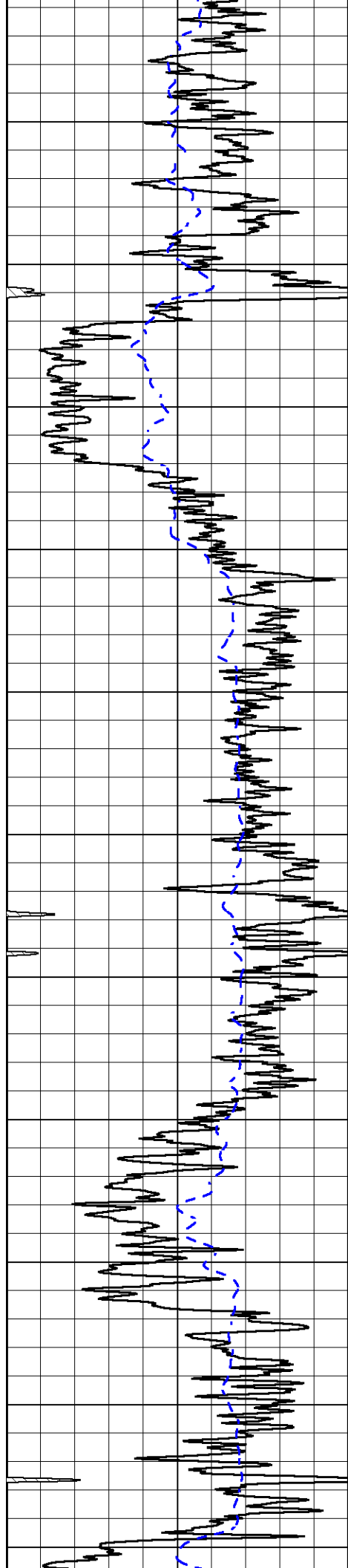
850

900

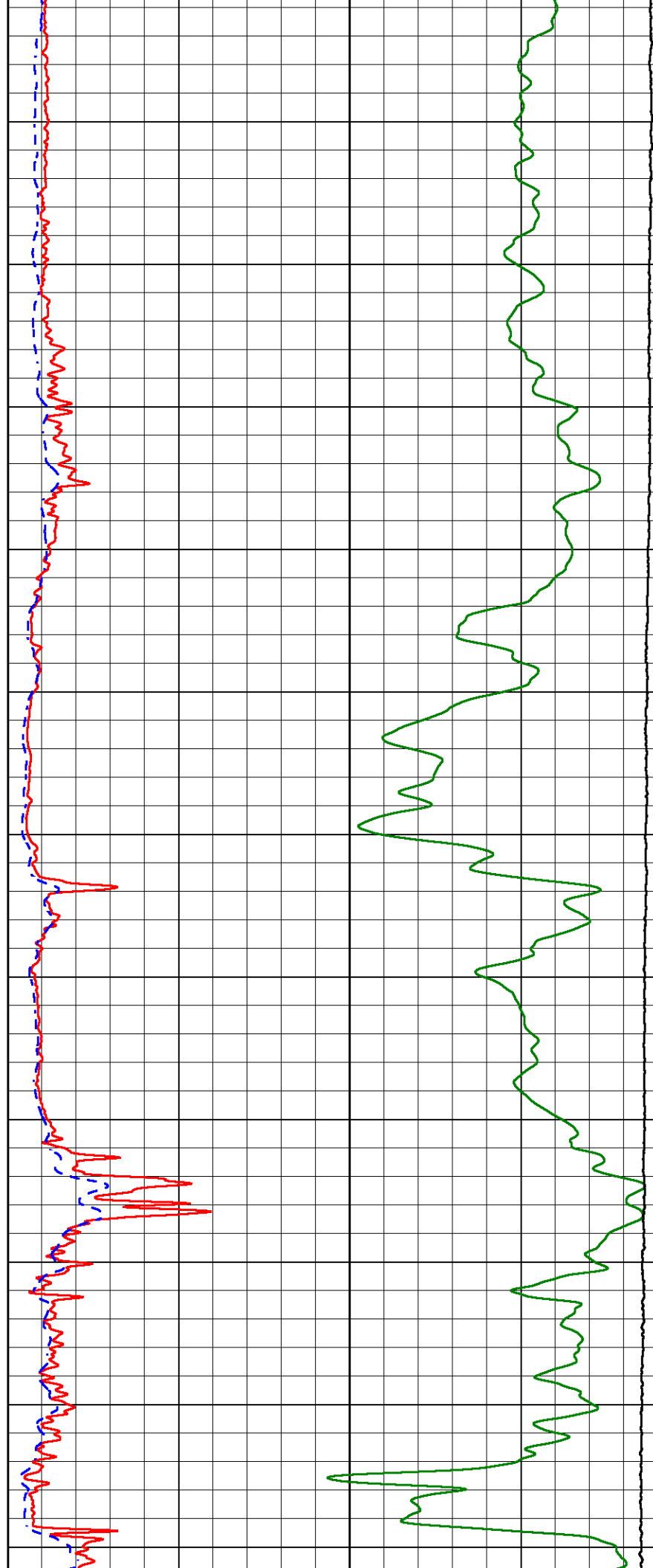
950

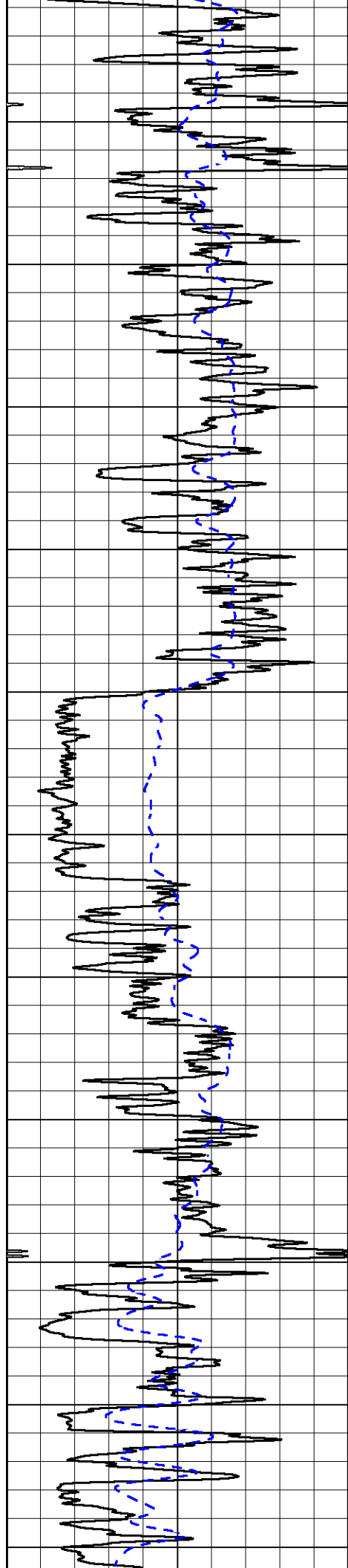
1000



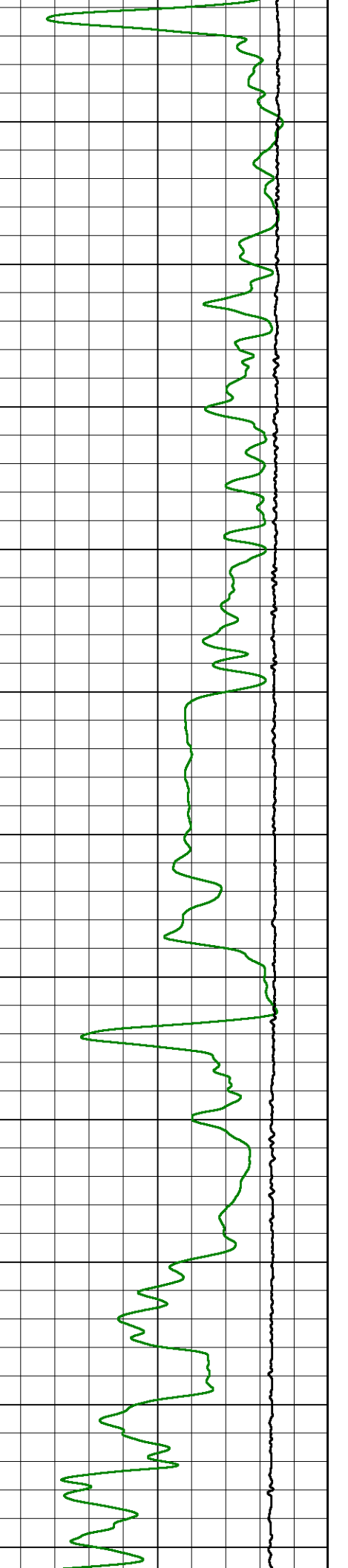
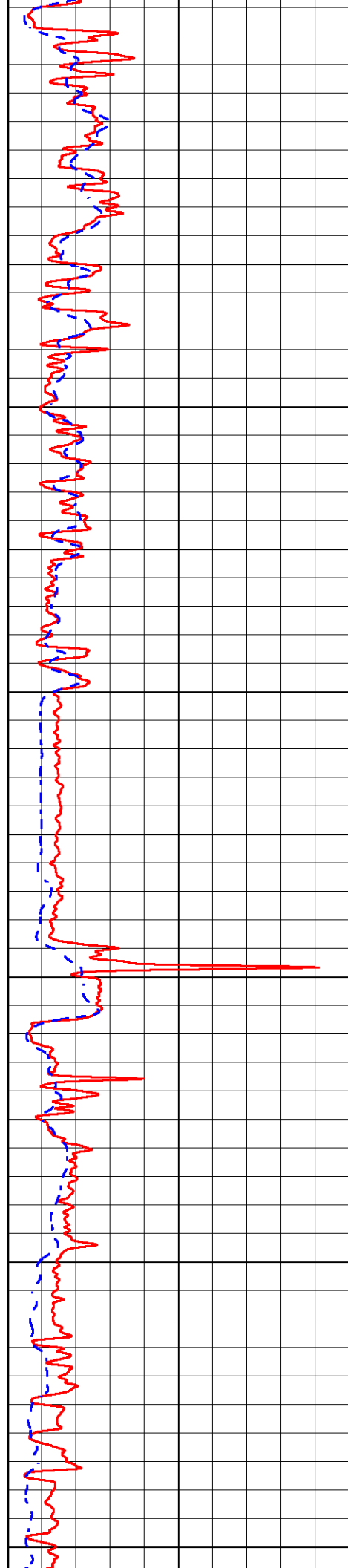


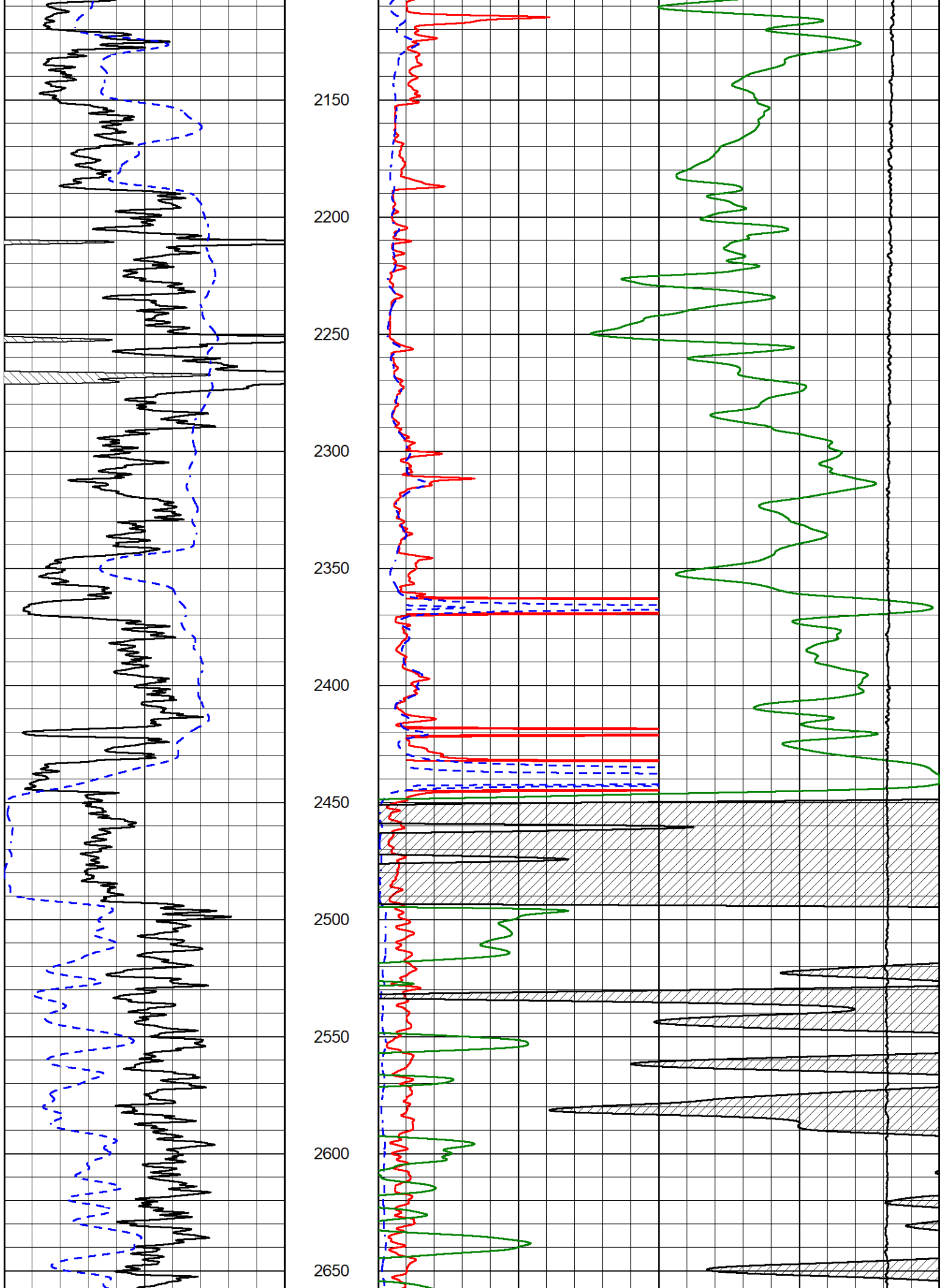
1050
1100
1150
1200
1250
1300
1350
1400
1450
1500
1550

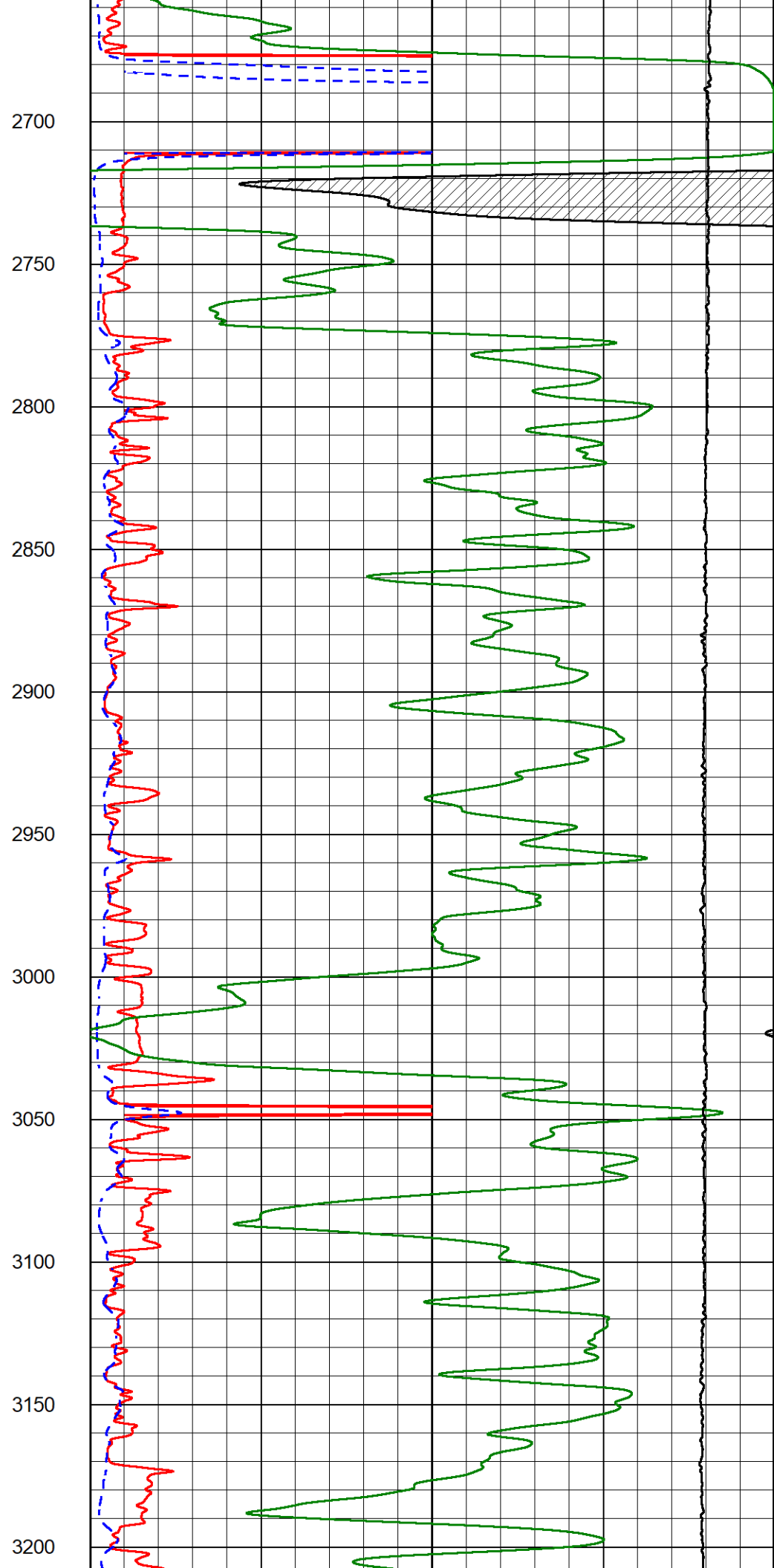
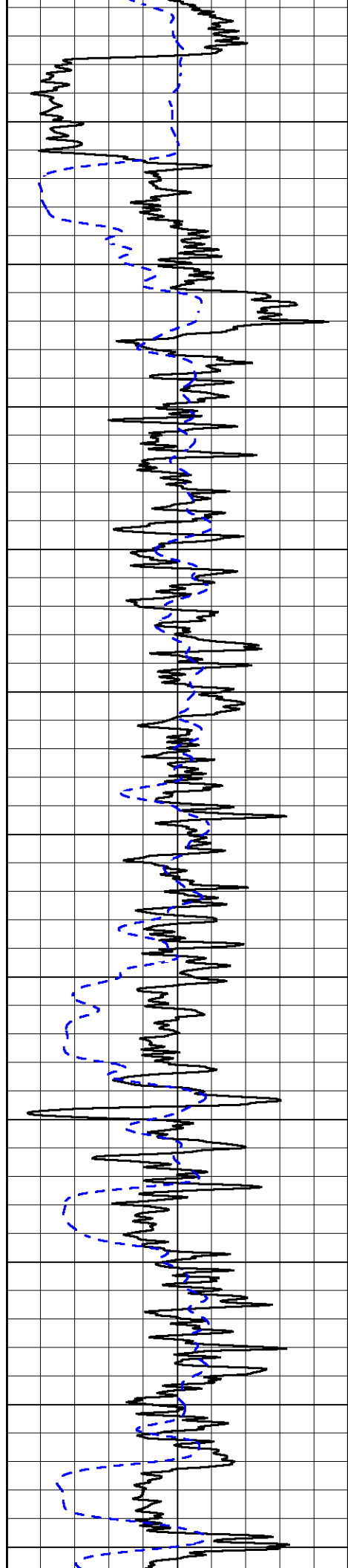


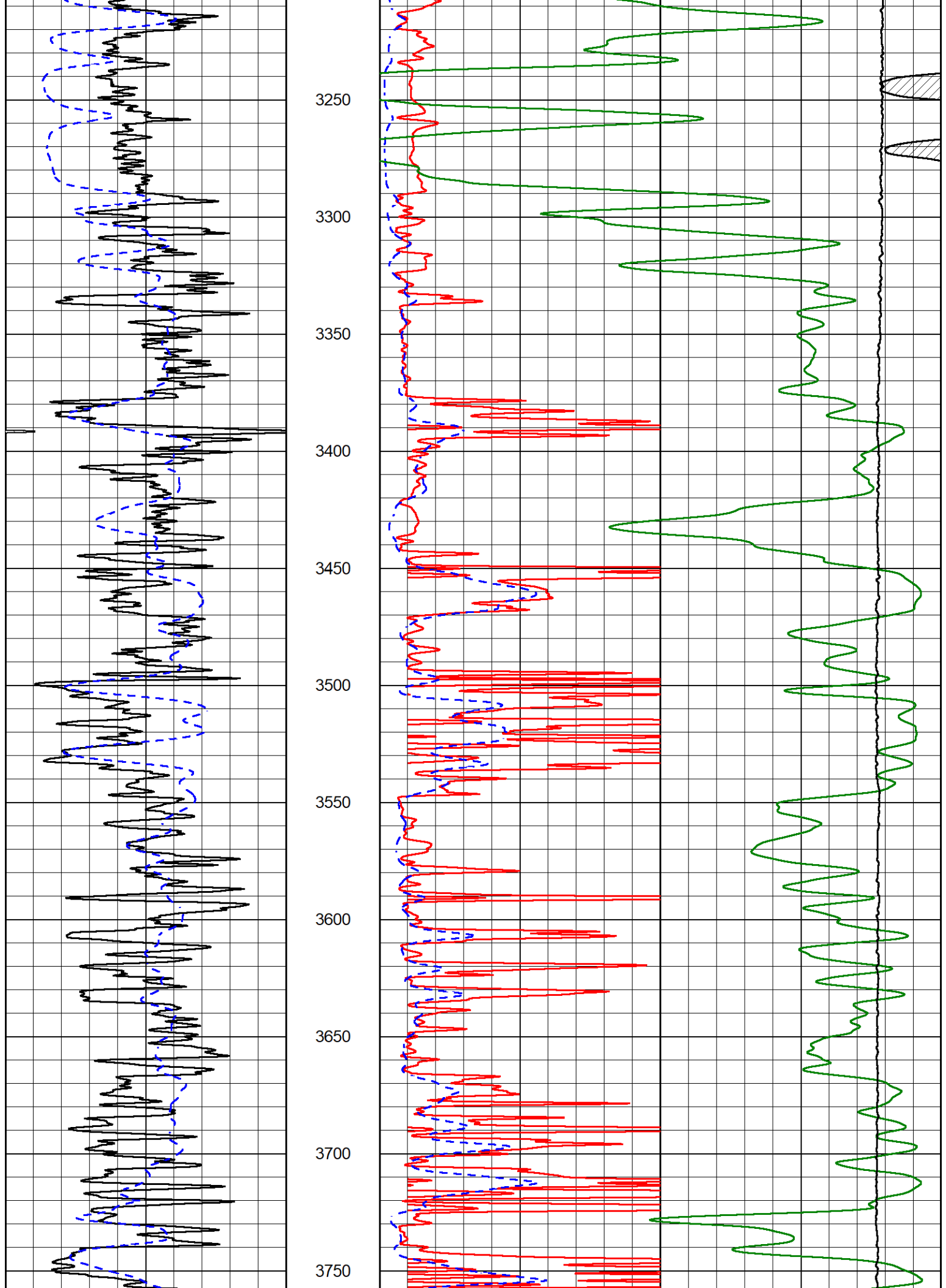


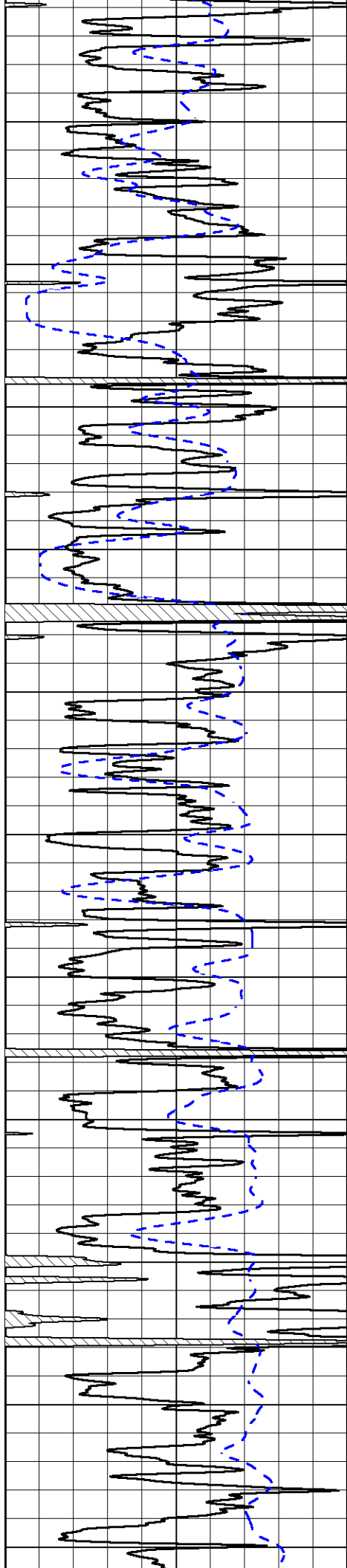
1600
1650
1700
1750
1800
1850
1900
1950
2000
2050
2100











3800

3850

3900

3950

4000

4050

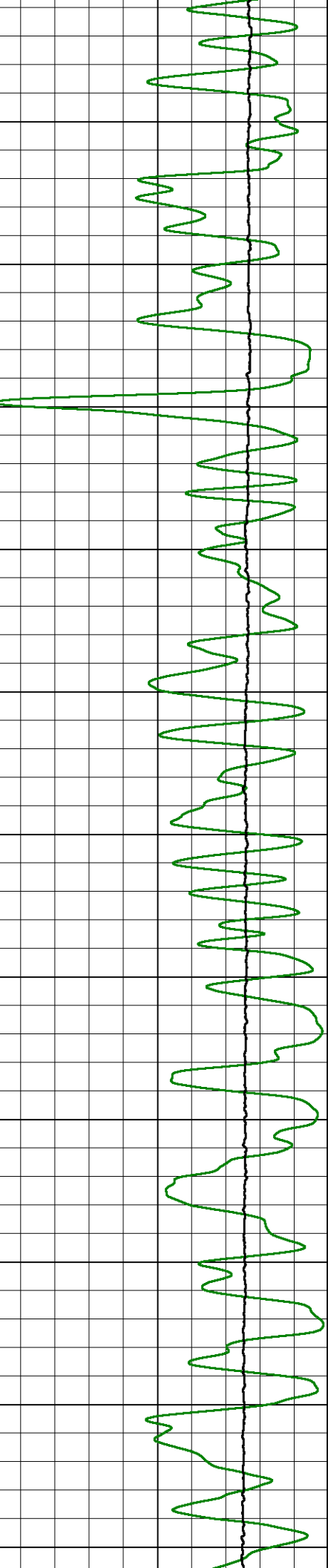
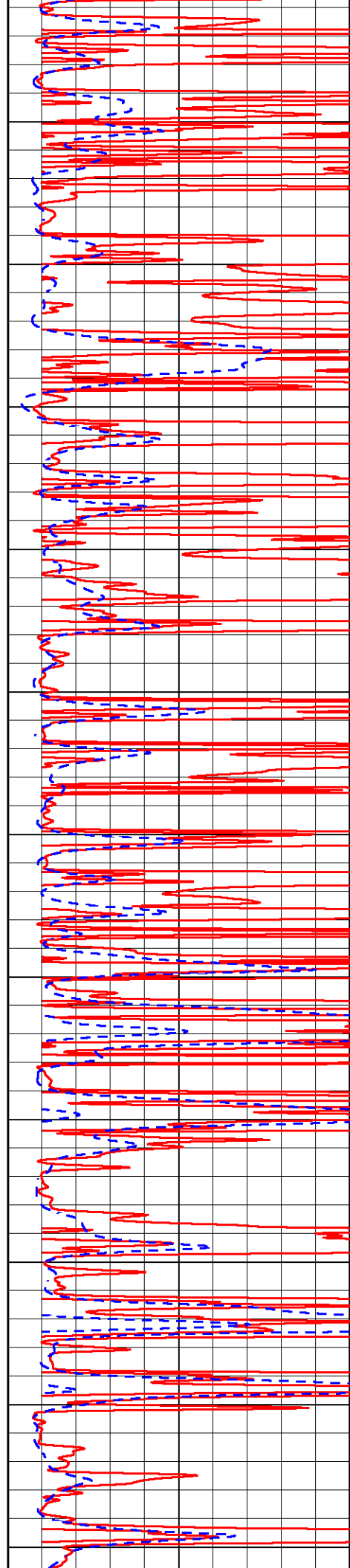
4100

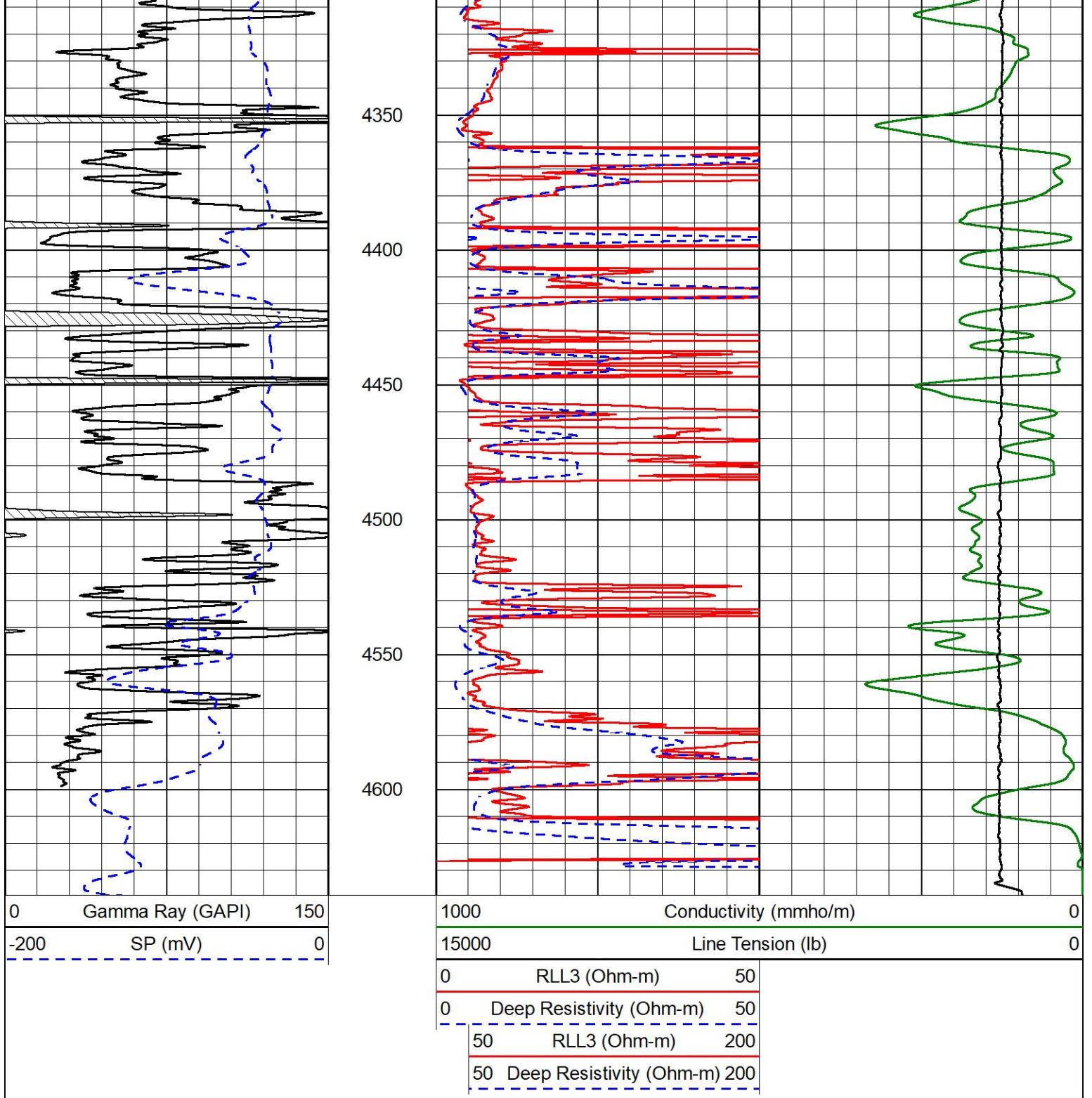
4150

4200

4250

4300





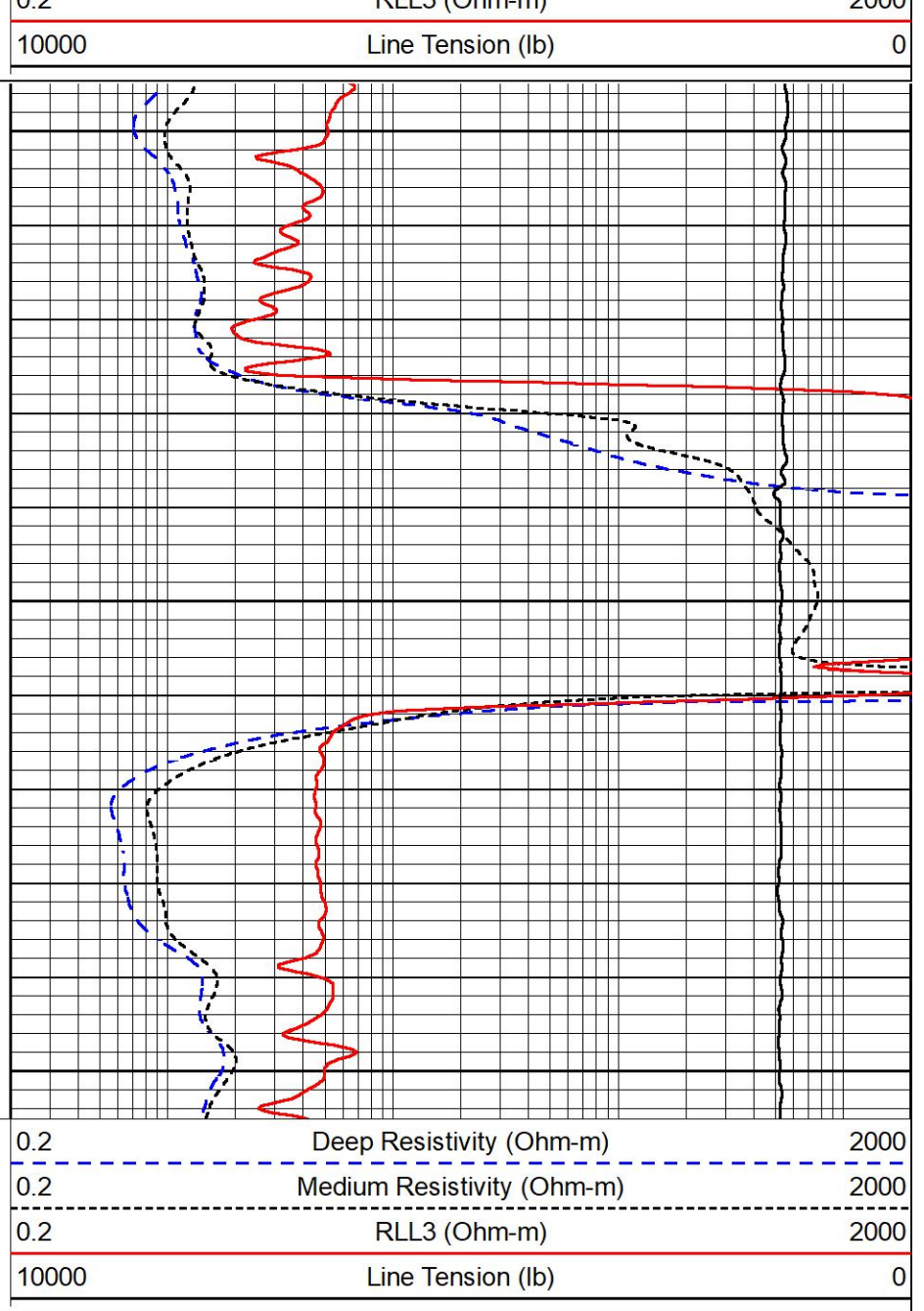
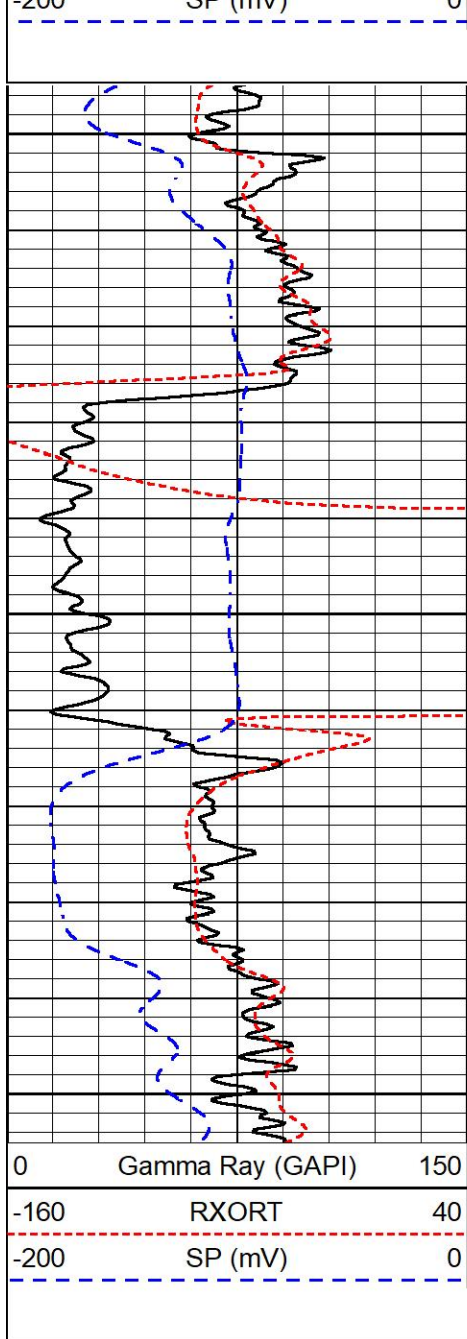
MIDWEST WIRELINE

ANHYDRITE SECTION

MAIN PASS

Database File	amwar_patricia #1-16.db
Dataset Pathname	StkMI/pass3.4
Presentation Format	_dil
Dataset Creation	Tue Feb 06 17:51:04 2024
Charted by	Depth in Feet scaled 1:240

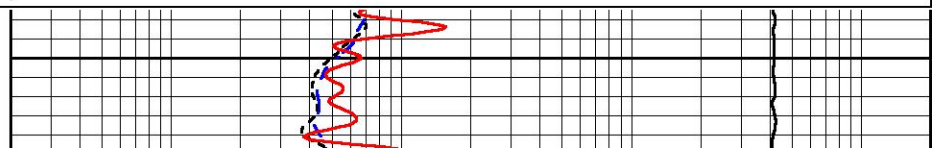
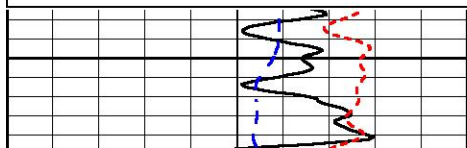
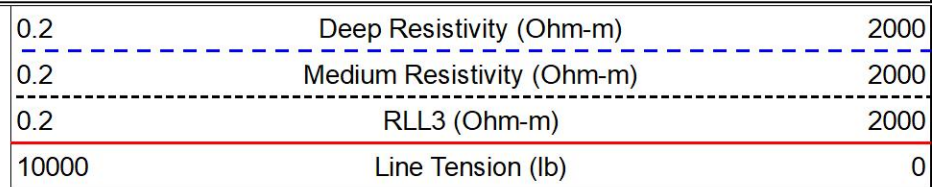
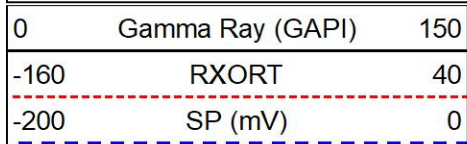


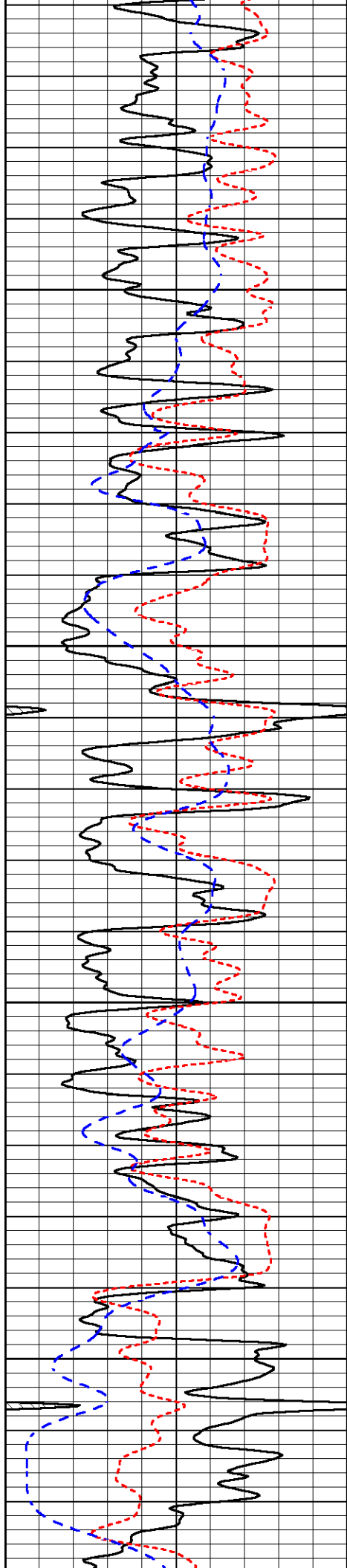


DETAIL SECTION

MAIN PASS

Database File amwar_patricia #1-16.db
 Dataset Pathname StkMI/pass3.1
 Presentation Format _dil
 Dataset Creation Tue Feb 06 18:24:43 2024
 Charted by Depth in Feet scaled 1:240



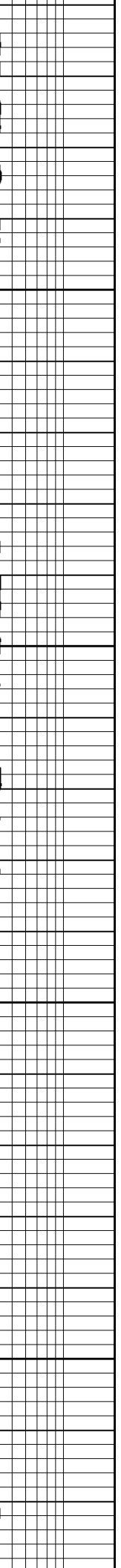
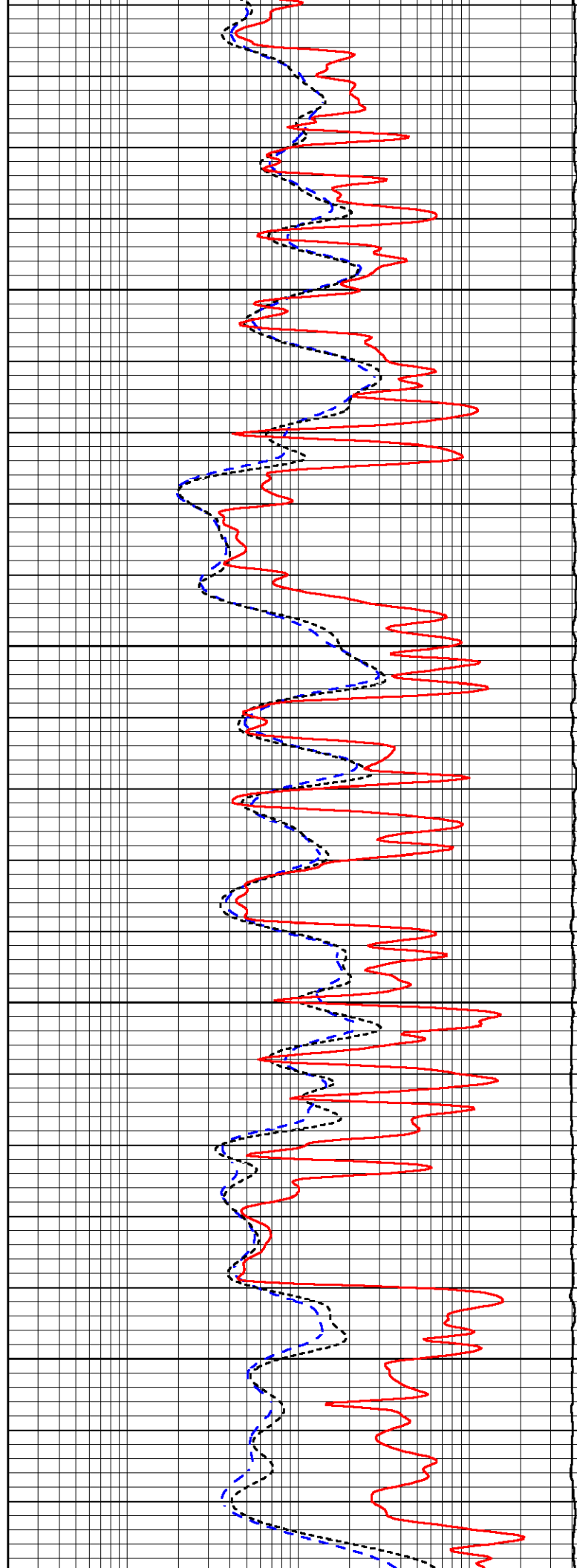


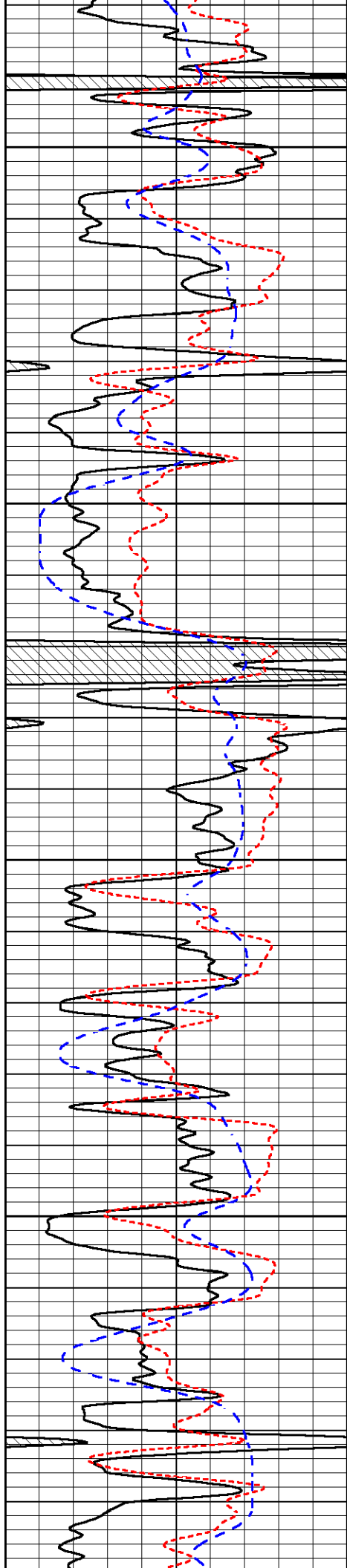
3700

3750

3800

3850





3900

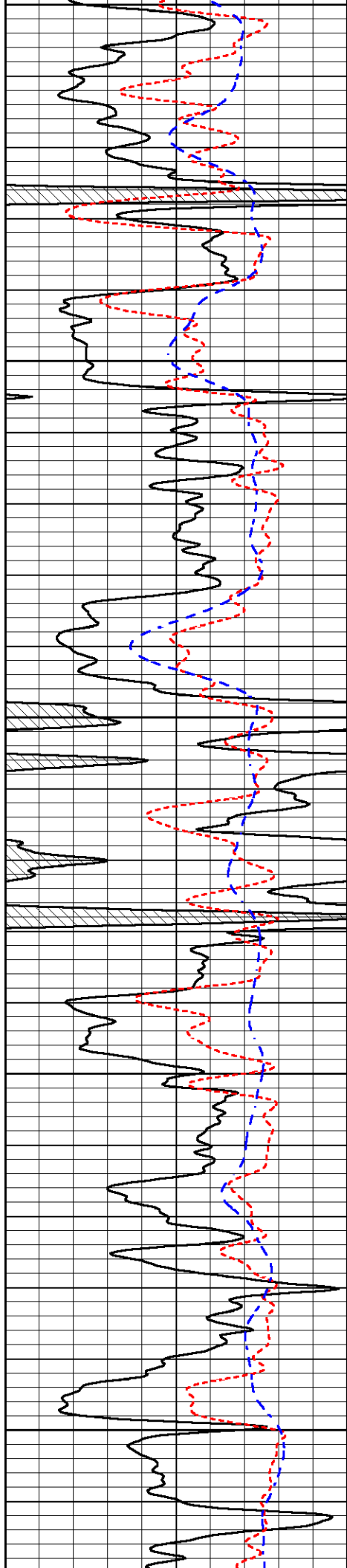
3950

4000

4050

4100





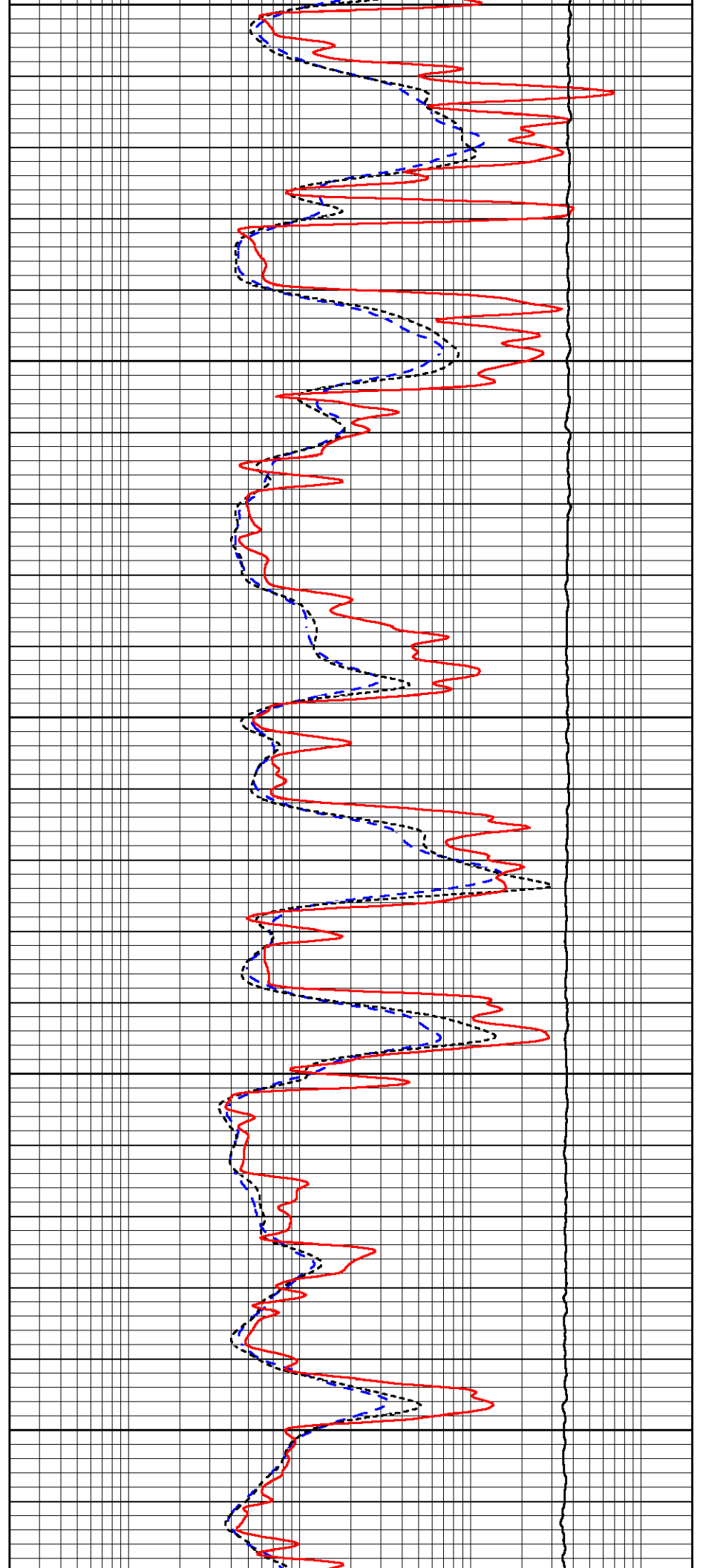
4100

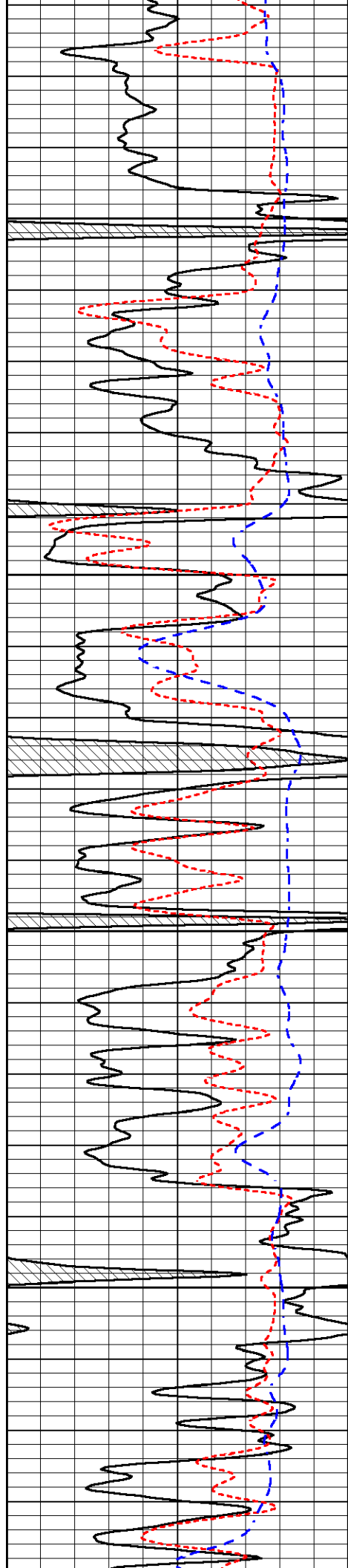
4150

4200

4250

4300



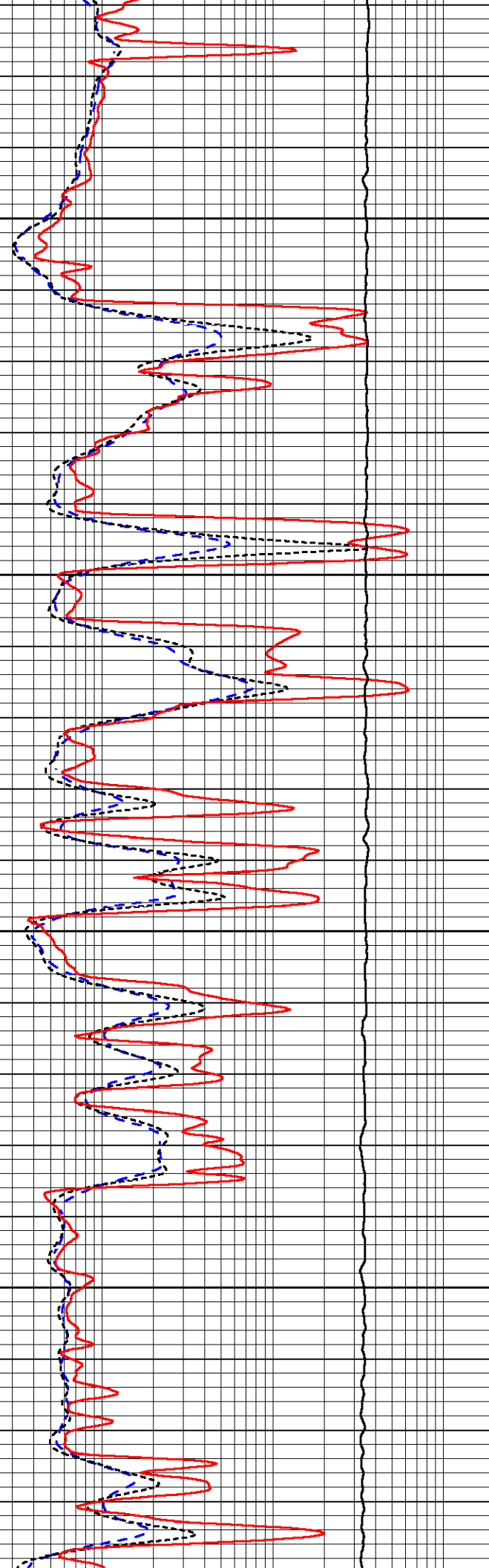


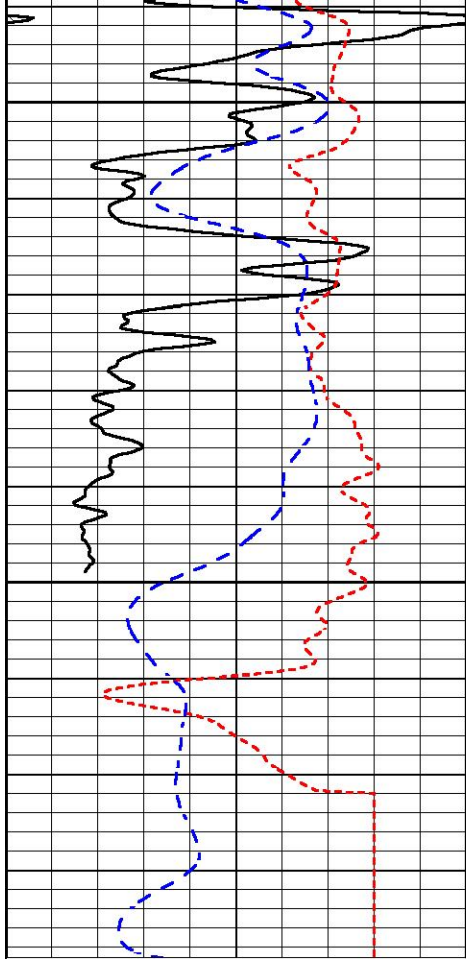
4350

4400

4450

4500

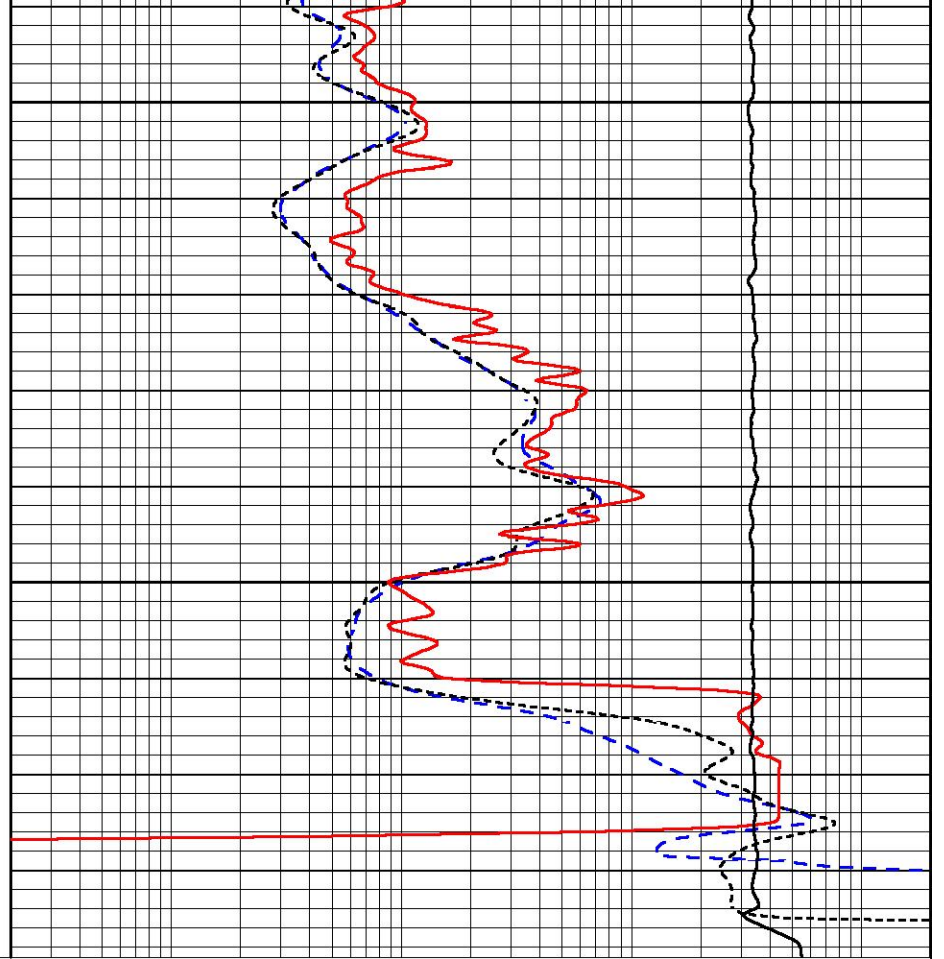




4550

4600

0	Gamma Ray (GAPI)	150
-160	RXORT	40
-200	SP (mV)	0



0.2	Deep Resistivity (Ohm-m)	2000
0.2	Medium Resistivity (Ohm-m)	2000
0.2	RLL3 (Ohm-m)	2000
10000	Line Tension (lb)	0



MIDWEST WIRELINE

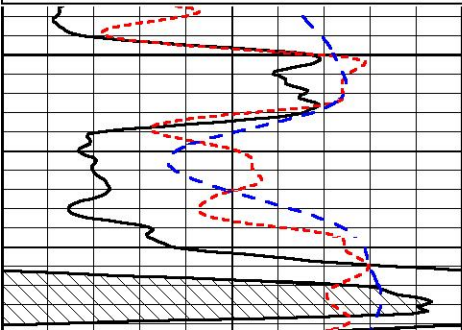
REPEAT SECTION

REPEAT PASS

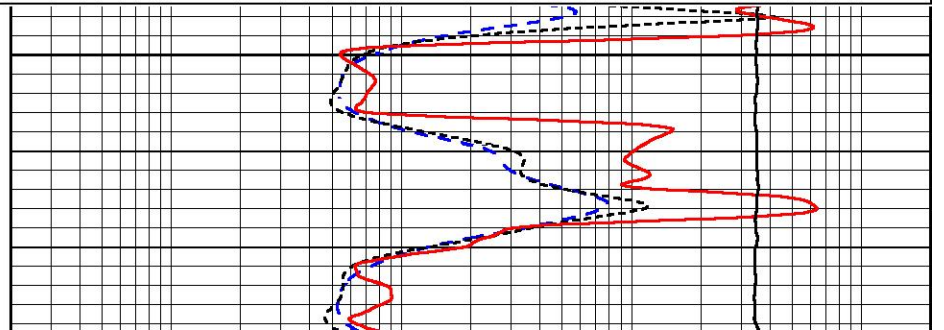
Database File amwar_patricia #1-16.db
 Dataset Pathname StkMI/pass2.1
 Presentation Format _dil
 Dataset Creation Tue Feb 06 17:31:21 2024
 Charted by Depth in Feet scaled 1:240

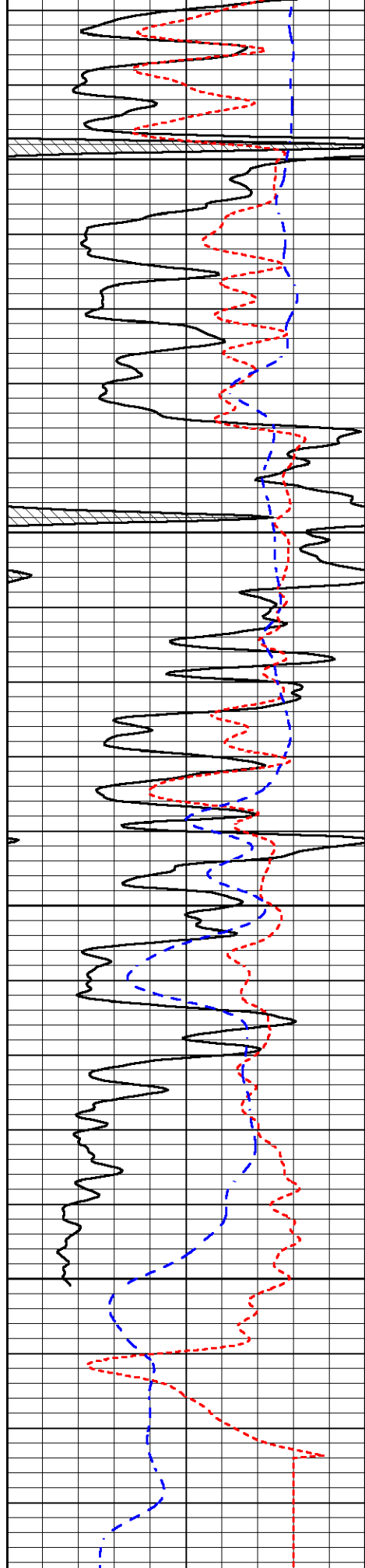
0	Gamma Ray (GAPI)	150
-160	RXORT	40
-200	SP (mV)	0

0.2	Deep Resistivity (Ohm-m)	2000
0.2	Medium Resistivity (Ohm-m)	2000
0.2	RLL3 (Ohm-m)	2000
10000	Line Tension (lb)	0



4400





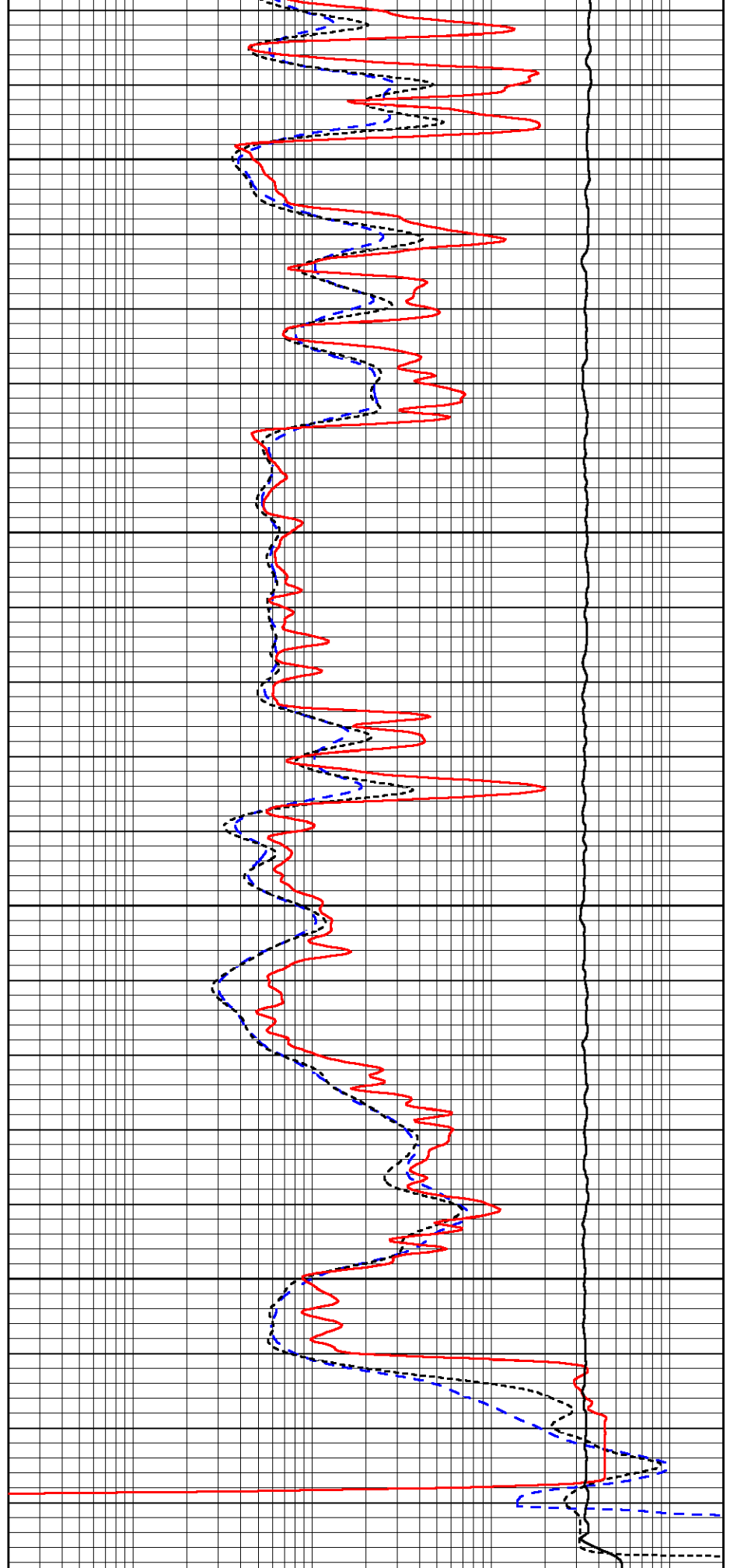
4450

4500

4550

4600

0 Gamma Ray (GAPI) 150
 -160 RXORT 40



0.2 Deep Resistivity (Ohm-m) 2000
 0.2 Medium Resistivity (Ohm-m) 2000

Detector	Readings	Target	Normalization
Short Space	6240.00 cps	1000.00 cps	1.6025
Long Space	460.00 cps	1000.00 cps	1.9500

PRE-SURVEY VERIFICATION

	Detector	Readings	Measured	Target
1)	Short Space	cps		
	Long Space	cps	pu	pu
2)	Short Space	cps		
	Long Space	cps	pu	
3)	Short Space	cps		
	Long Space	cps	pu	

POST-SURVEY VERIFICATION

	Detector	Readings	Measured	Target
1)	Short Space	cps		
	Long Space	cps	pu	pu
2)	Short Space	cps		
	Long Space	cps	pu	pu
3)	Short Space	cps		
	Long Space	cps	pu	pu

Gamma Ray Calibration Report

Serial Number: 102
Tool Model: M&W
Performed: Mon Sep 25 22:02:33 2023

Calibrator Value: 1.0 GAPI

Background Reading: 0.0 cps
Calibrator Reading: 1.0 cps

Sensitivity: 0.5250 GAPI/cps



Company American Warrior, Inc.
Well Patricia #1-16
Field Unnamed
County Thomas
State Kansas