



MIDWEST WIRELINE

# DUAL COMPENSATED POROSITY

Company American Warrior, Inc.  
 Well Patricia #1-16  
 Field Unnamed  
 County Thomas State Kansas

Company American Warrior, Inc.  
 Well Patricia #1-16  
 Field Unnamed  
 County Thomas  
 State Kansas

Location: API #: 15-193-21123-00-00  
 NW SE NW SW  
 1889 FSL & 811 FWL  
 SEC 16 TWP 6S RGE 31W  
 Permanent Datum Ground Level Elevation 2995  
 Log Measured From Kelly Bushing  
 Drilling Measured From Kelly Bushing  
 Other Services  
 DIL  
 MEL/BHCS  
 K.B. 3006  
 D.F.  
 G.L. 2995

Date	2/6/2024						
Run Number	One						
Type Log	CNL/CDL						
Depth Driller	4635						
Depth Logger	4635						
Bottom Logged Interval	4606						
Top Logged Interval	3650						
Type Fluid In Hole	Chemical						
Salinity, PPM CL	2300						
Density	9.2						
Level	Full						
Max. Rec. Temp. F	122						
Operating Rig Time	4 Hours						
Equipment -- Location	P-24 Hays						
Recorded By	T. Martin						
Witnessed By	Marc Downing						
Borehole Record							
Run No.	Bit	From	To	Size	Wgt.	Casing Record	
One	12.25	00	333	8.625	23	From	To
Two	7.875	333	TD			00	333

<<< Fold Here >>>

All interpretations are opinions based on inferences from electrical or other measurements and Midwest Wireline Services, LLC cannot and does not guarantee the accuracy or correctness of any interpretation, and Midwest Wireline Services, LLC will not be liable or responsible for any loss, costs, damages, or expenses incurred or sustained by anyone resulting from any interpretation made by any of our officers, agents or employees.

### Comments

N/A DENOTES NOT AVAILABLE OR NON-APPLICABLE.

Rexford, KS, 5 N to CC Rd,  
3 W to 33, 3/4 S, E into

Log Measured From: Kelly Bushing

11 Ft. Above Permanent Datum

THANK YOU FOR USING MIDWEST WIRELINE LLC  
785-625-3858

### Your Midwest Wireline Crew

Engineer: T. Martin  
Operator:  
Operator:  
Operator:

### This Log Record Was Witnessed By

Primary Witness: Marc Downing  
Secondary Witness:  
Secondary Witness:  
Secondary Witness:

# Log Variables

DatabaseC:\ProgramData\Warrior\Data\amwar\_patricia #1-16.db  
 Dataset field/well/StkMI/pass3.12/\_vars\_

## Top - Bottom

BOREID in 7.875	BOTTEMP degF 122	CASEOD in 5.5	CASETHCK in 0	FLUIDDEN g/cc 1	MATRXDEN g/cc 2.71	NPORSEL Limestone	PERFS No
SNDERR mmho/m 1	SNDERRM mmho/m 3	SPSHIFT mV 0	SRFTEMP degF 50	SZCOR Off	TDEPTH ft 4635		

## Variable Description

BOREID : Borehole I.D.  
 BOTTEMP : Bottom Hole Temperature  
 CASEOD : Casing O.D.  
 CASETHCK : Casing Thickness  
 FLUIDDEN : Fluid Density  
 MATRXDEN : Matrix Density  
 NPORSEL : Neutron Porosity Curve Select

PERFS : Perforation Flag  
 SNDERR : Deep Sonde Error Correction  
 SNDERRM : Medium Sonde Error Correction  
 SPSHIFT : S.P. Baseline Offset  
 SRFTEMP : Surface Temperature  
 SZCOR : CN Size Cor. ?  
 TDEPTH : Total Depth

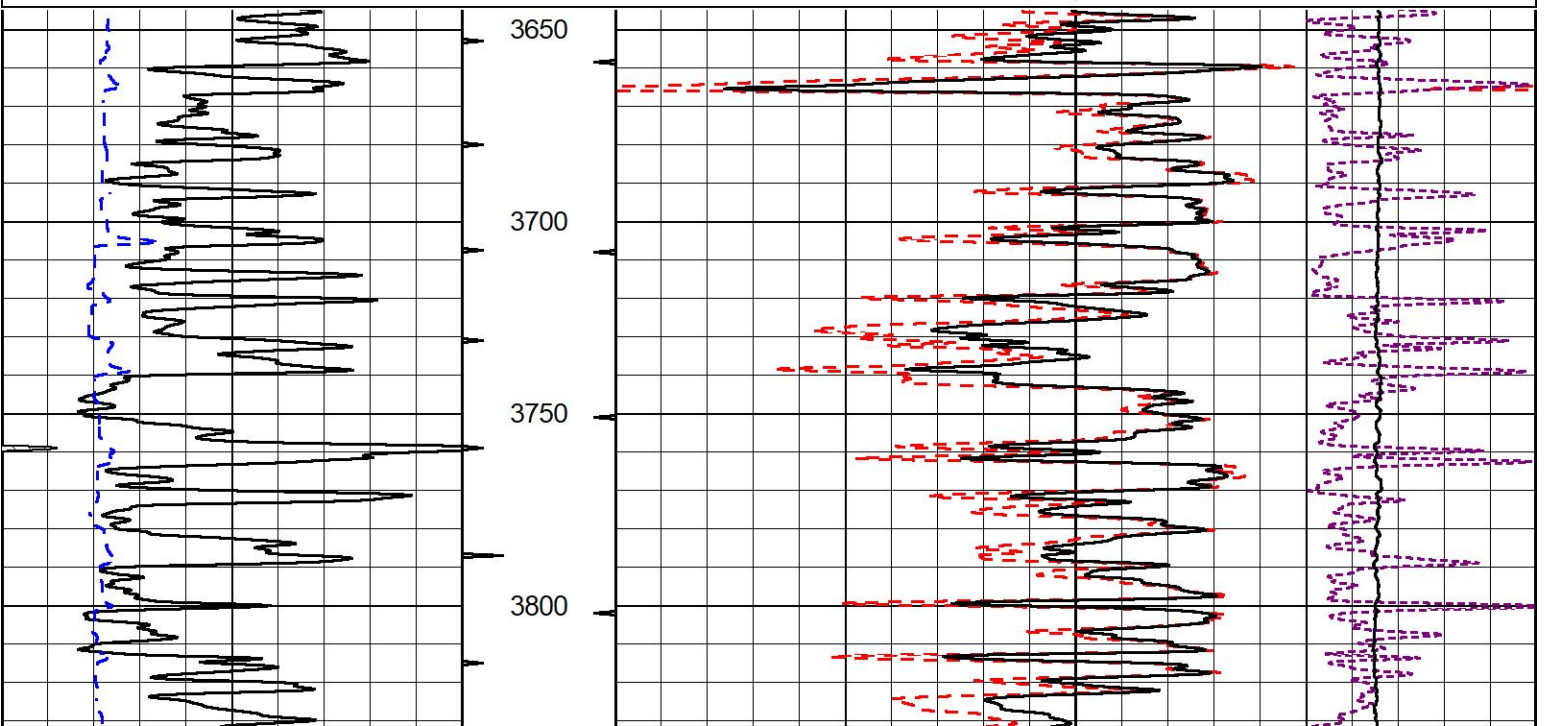


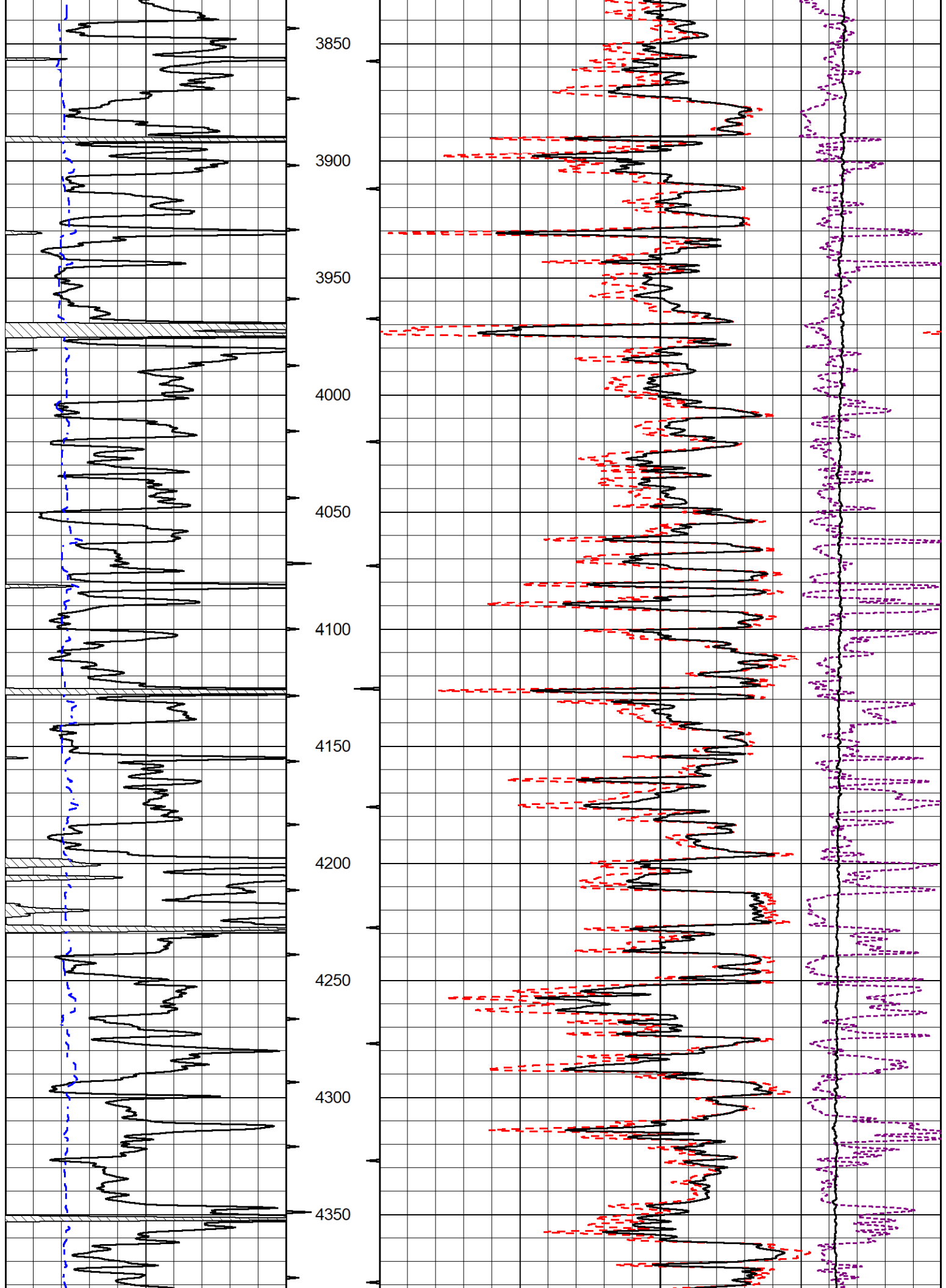
## 2" SCALE BULK DENSITY

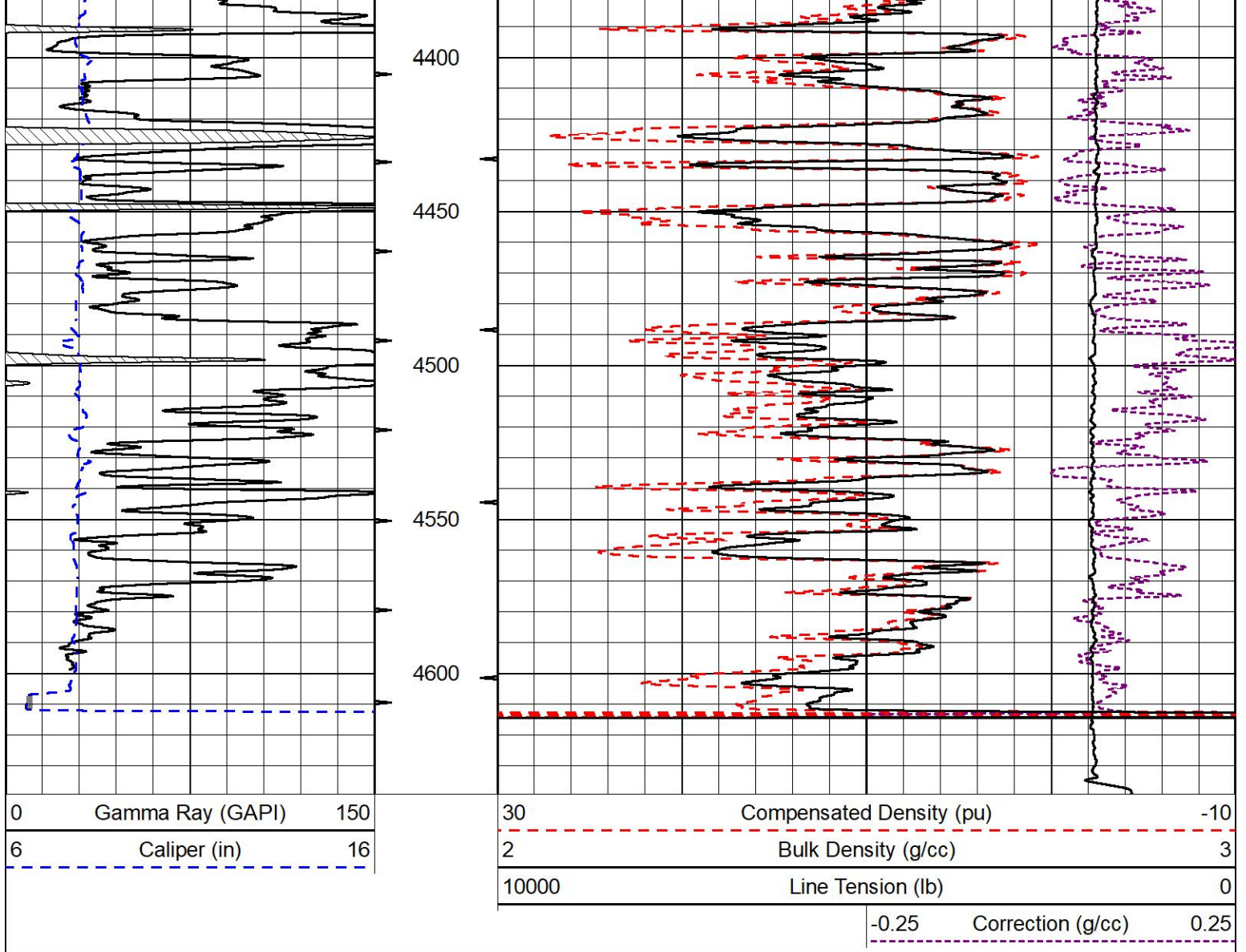
### MAIN PASS

Database File amwar\_patricia #1-16.db  
 Dataset Pathname StkMI/pass3.3  
 Presentation Format \_cdl  
 Dataset Creation Tue Feb 06 17:43:51 2024  
 Charted by Depth in Feet scaled 1:600

0	Gamma Ray (GAPI)	150	30	Compensated Density (pu)	-10	
6	Caliper (in)	16	2	Bulk Density (g/cc)	3	
			10000	Line Tension (lb)	0	
				-0.25	Correction (g/cc)	0.25



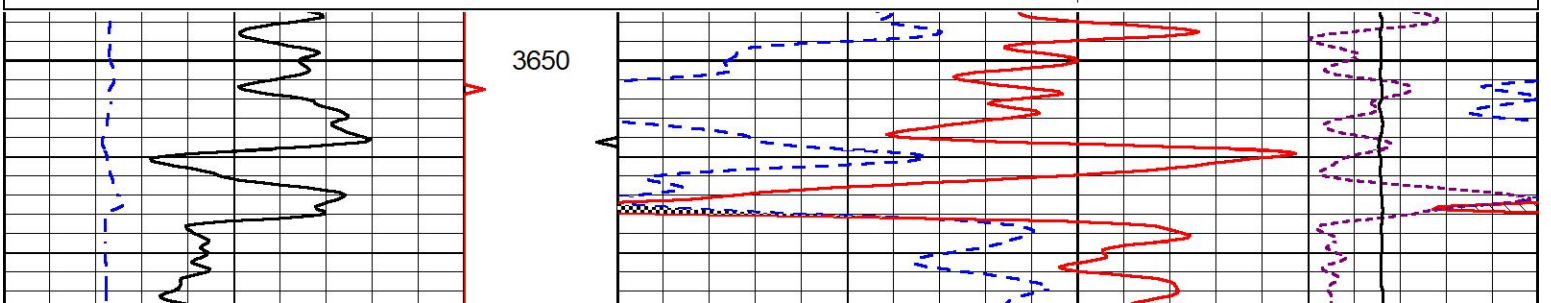
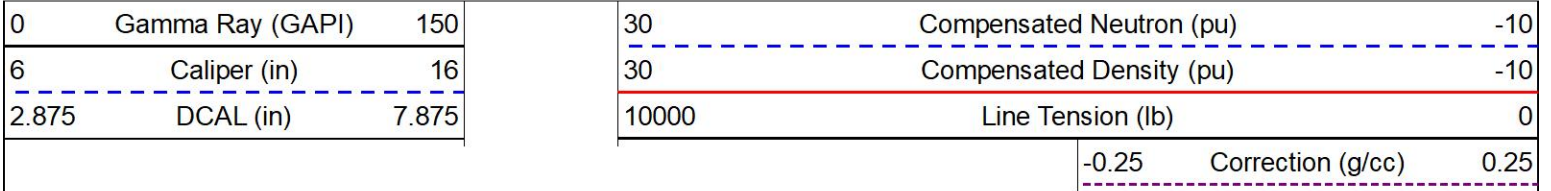


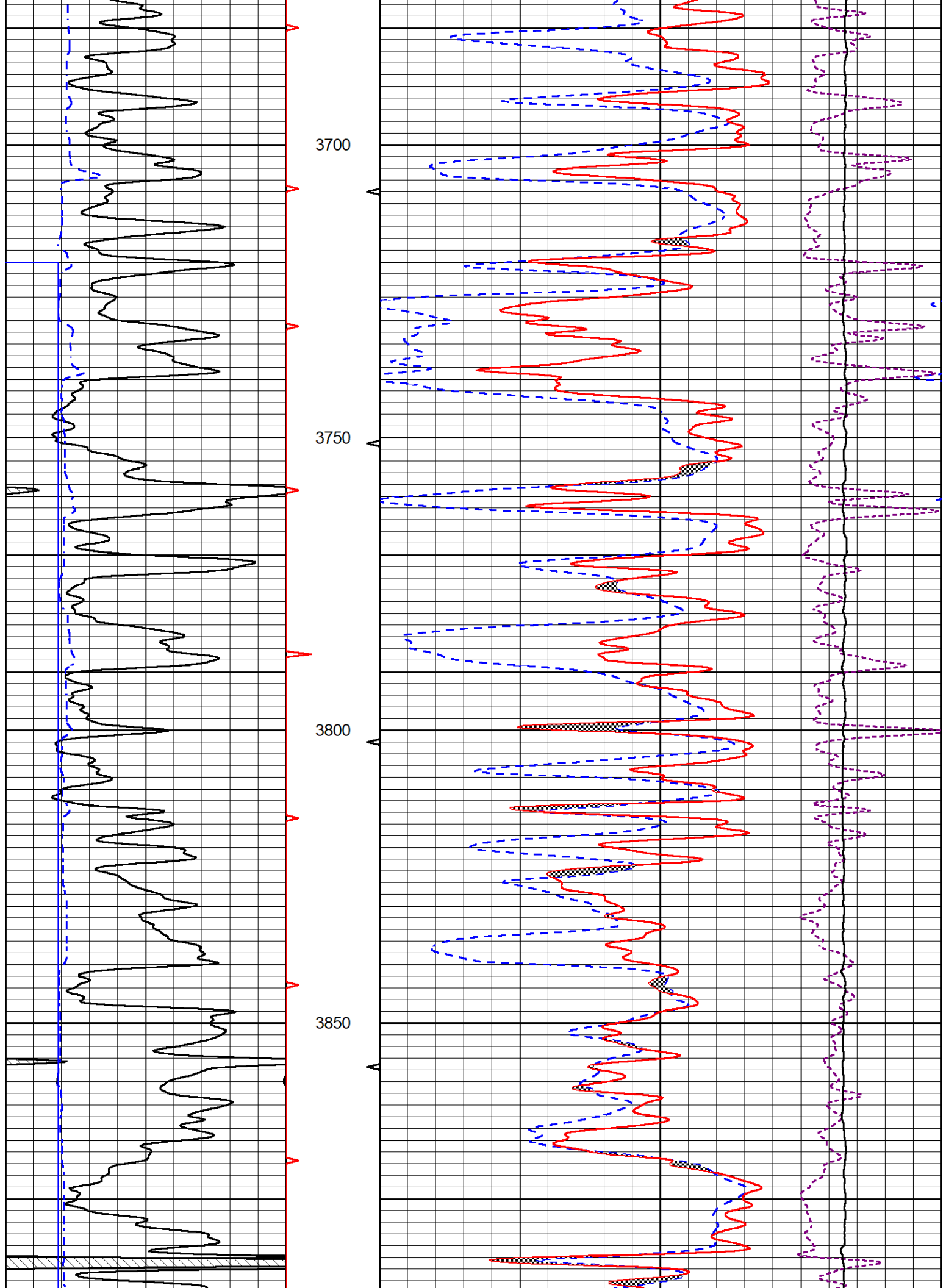


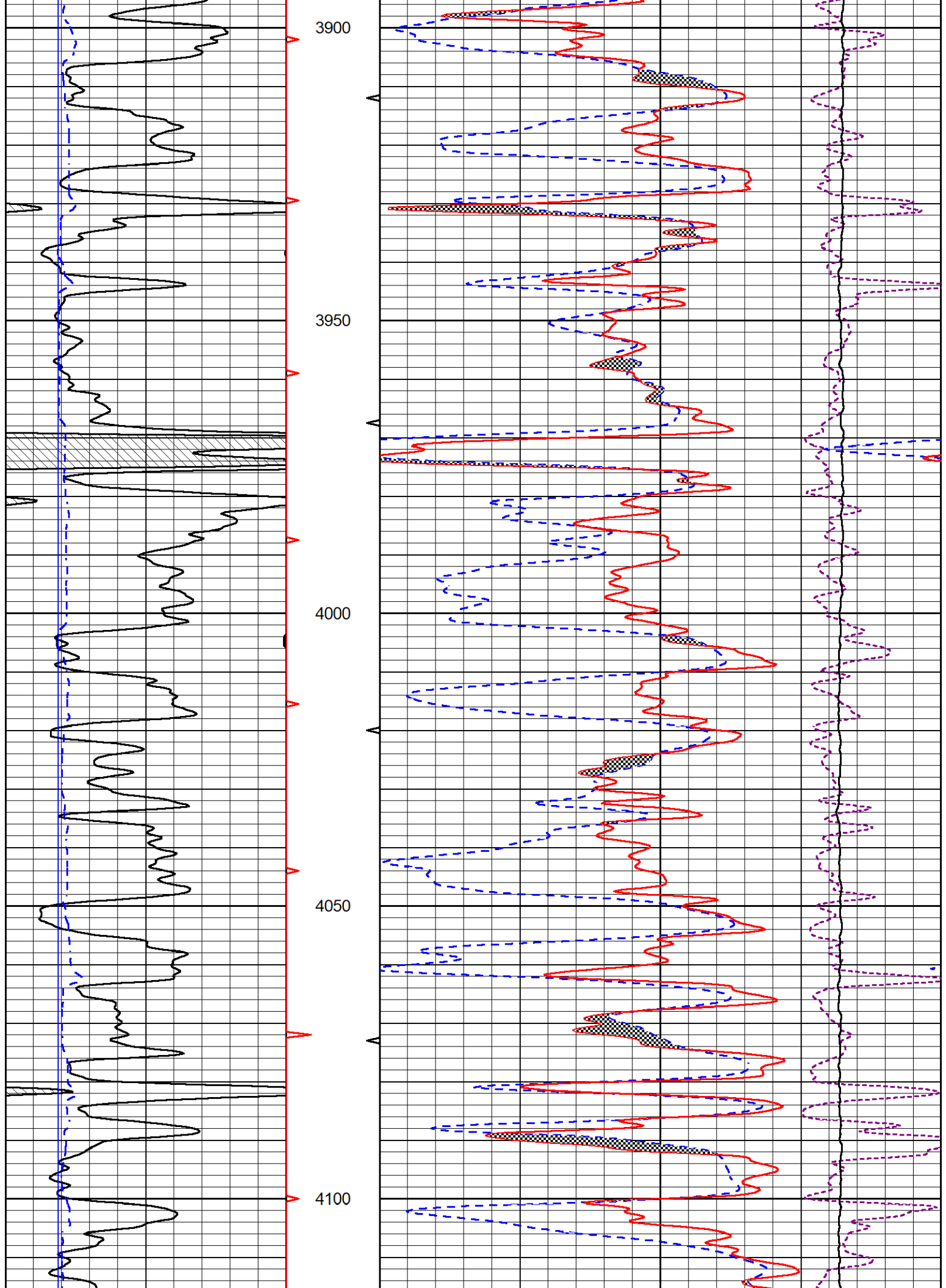
# DETAIL SECTION

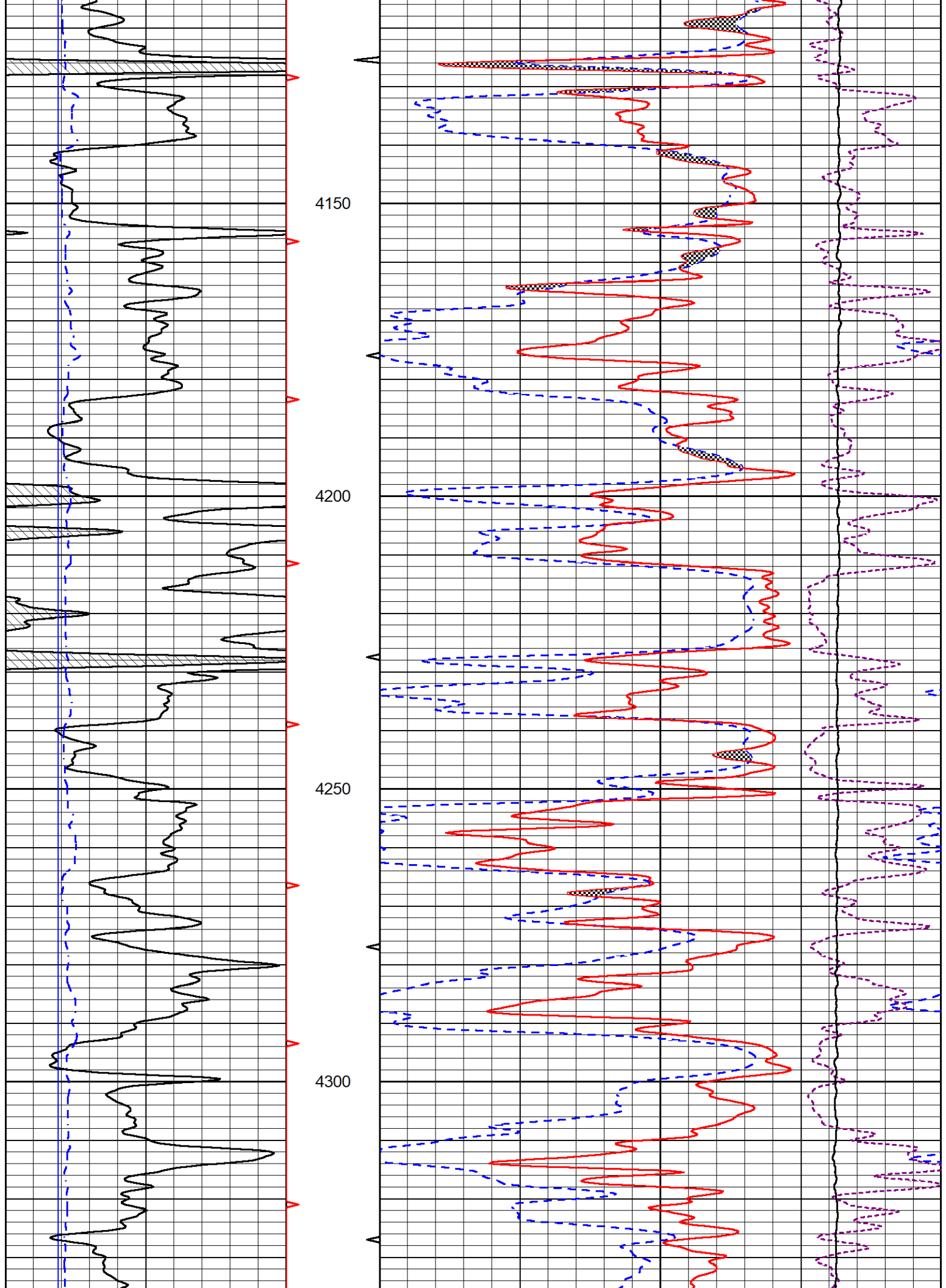
## MAIN PASS

Database File amwar\_patricia #1-16.db  
 Dataset Pathname StkMI/pass3.1  
 Presentation Format \_CNDLS~1  
 Dataset Creation Tue Feb 06 18:24:43 2024  
 Charted by Depth in Feet scaled 1:240

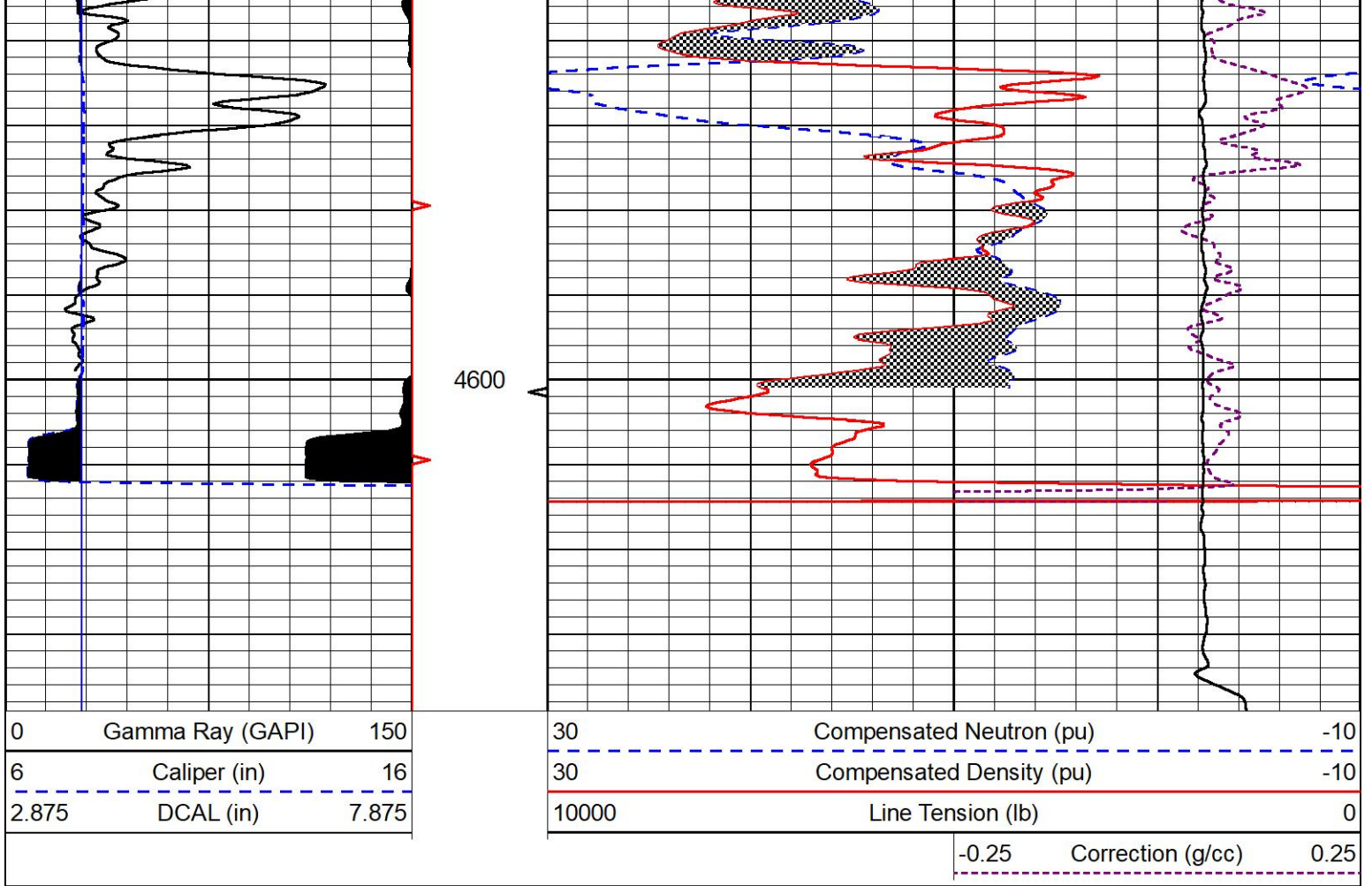










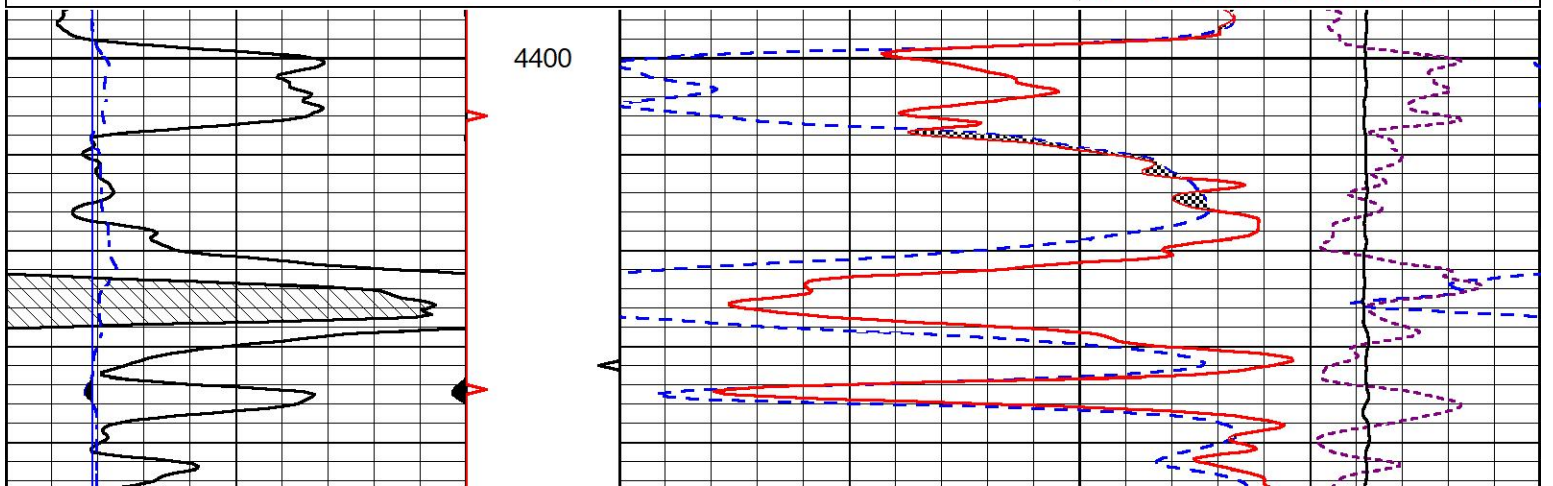
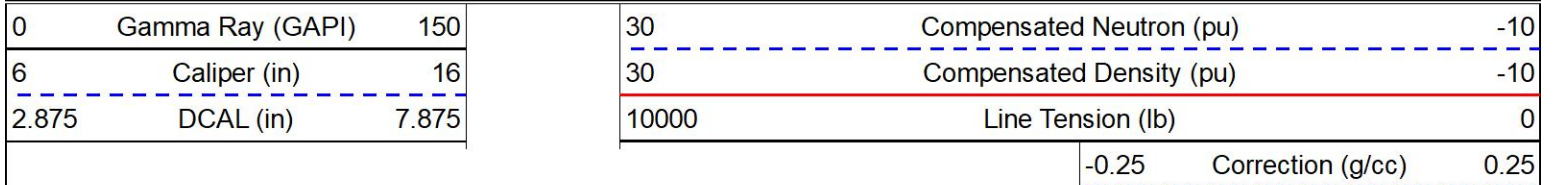


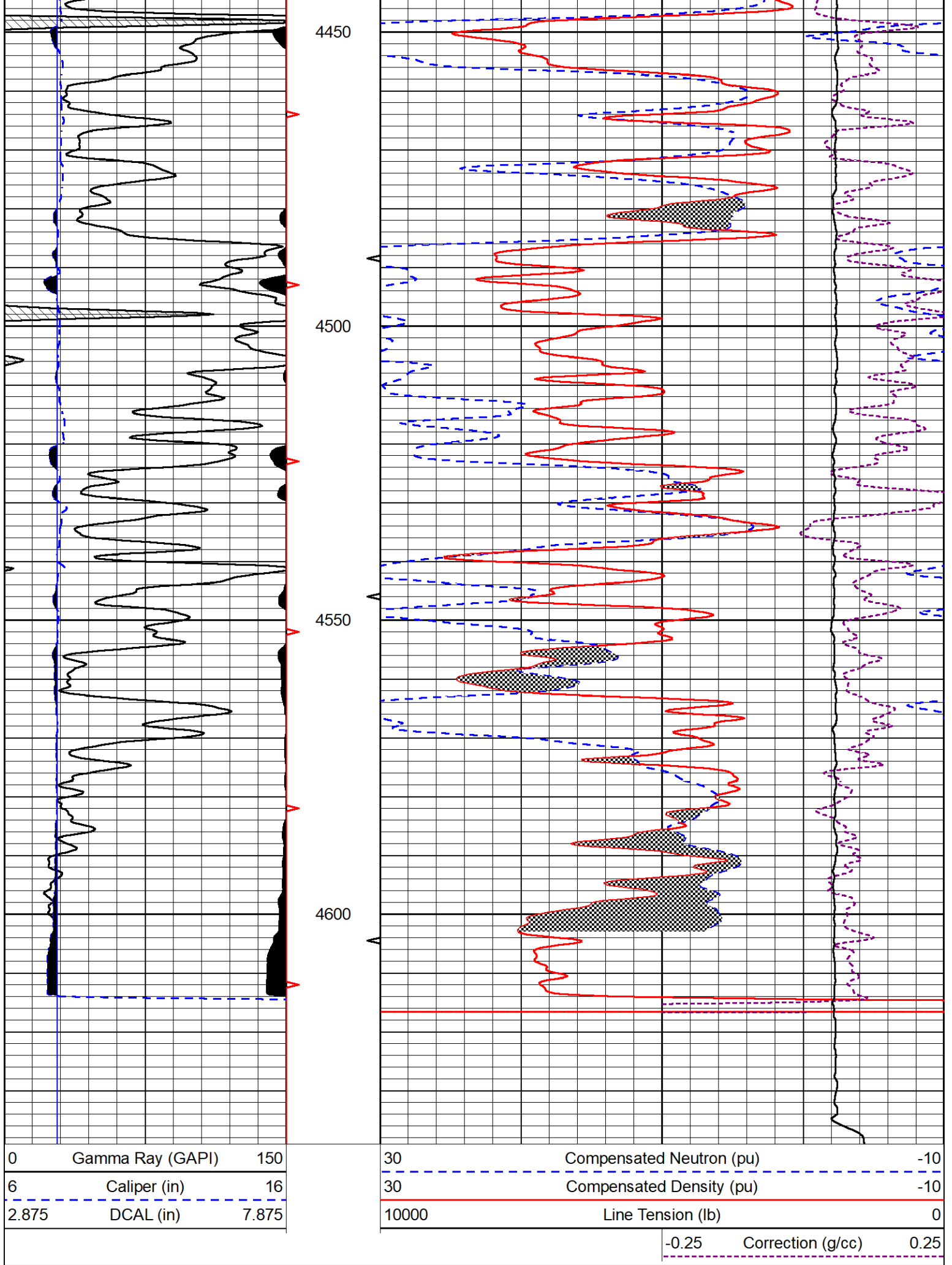
MIDWEST WIRELINE

## REPEAT SECTION

### REPEAT PASS

Database File amwar\_patricia #1-16.db  
 Dataset Pathname StkMI/pass2.1  
 Presentation Format \_CNDLS~1  
 Dataset Creation Tue Feb 06 17:31:21 2024  
 Charted by Depth in Feet scaled 1:240







PRE-SURVEY VERIFICATION

	Detector	Readings	Measured	Target
1)	Short Space Long Space	cps cps	pu	pu
2)	Short Space Long Space	cps cps	pu	
3)	Short Space Long Space	cps cps	pu	

POST-SURVEY VERIFICATION

	Detector	Readings	Measured	Target
1)	Short Space Long Space	cps cps	pu	pu
2)	Short Space Long Space	cps cps	pu	pu
3)	Short Space Long Space	cps cps	pu	pu

Gamma Ray Calibration Report

Serial Number: 102  
 Tool Model: M&W  
 Performed: Mon Sep 25 22:02:33 2023

Calibrator Value: 1.0 GAPI

Background Reading: 0.0 cps  
 Calibrator Reading: 1.0 cps

Sensitivity: 0.5250 GAPI/cps



MIDWEST WIRELINE

Company American Warrior, Inc.  
 Well Patricia #1-16  
 Field Unnamed  
 County Thomas  
 State Kansas