



MICRORESISTIVITY

MIDWEST WIRELINE

Company American Warrior, Inc.
 Well Patricia #1-16
 Field Unnamed
 County Thomas
 State Kansas

Company American Warrior, Inc.
 Well Patricia #1-16
 Field Unnamed
 County Thomas State Kansas

Location: API #: 15-193-21123-00-00
 NW SE NW SW
 1889 FSL & 811 FWL
 SEC 16 TWP 6S RGE 31W
 Permanent Datum Ground Level Elevation 2995
 Log Measured From Kelly Bushing
 Drilling Measured From Kelly Bushing
 Other Services
 CNL/CDL
 DIL/BHCS
 Elevation
 K.B. 3006
 D.F.
 G.L. 2995

Date	2/6/2024
Run Number	One
Depth Driller	4635
Depth Logger	4635
Bottom Logged Interval	4634
Top Log Interval	3650
Casing Driller	8.625 @ 333
Casing Logger	336
Bit Size	7.875
Type Fluid in Hole	Chemical
Salinity, ppm CL	2300
Density / Viscosity	9.2 58
pH / Fluid Loss	10.5 6.4
Source of Sample	Flowline
Rm @ Meas. Temp	0.85 @ 68
Rmt @ Meas. Temp	0.64 @ 68
Rmc @ Meas. Temp	1.15 @ 68
Source of Rmf / Rmc	Charts
Rm @ BHT	0.47 @ 122
Operating Rig Time	4 Hours
Max Rec. Temp. F	122
Equipment Number	P-24
Location	Hays
Recorded By	T. Martin
Witnessed By	Marc Downing

<<< Fold Here >>>

All interpretations are opinions based on inferences from electrical or other measurements and Midwest Wireline LLC cannot and does not guarantee the accuracy or correctness of any interpretation, and Midwest Wireline LLC will not be liable or responsible for any loss, costs, damages, or expenses incurred or sustained by anyone resulting from any interpretation made by any of our officers, agents or employees.

Comments

N/A DENOTES NOT AVAILABLE OR NON-APPLICABLE.

Rexford, KS, 5 N to CC Rd,
 3 W to 33, 3/4 S, E into

Log Measured From: Kelly Bushing 11 Ft. Above Permanent Datum

THANK YOU FOR USING MIDWEST WIRELINE LLC
 785-625-3858

Your Midwest Wireline Crew Engineer: T. Martin Operator: Operator: Operator:	This Log Record Was Witnessed By Primary Witness: Marc Downing Secondary Witness: Secondary Witness: Secondary Witness:
--	---

Log Variables

DatabaseC:\ProgramData\Warrior\Data\amwar_patricia #1-16.db
 Dataset field/well/StkMI/pass3.12/_vars_

Top - Bottom

BOREID in 7.875	BOTTEMP degF 122	CASEOD in 5.5	CASETHCK in 0	FLUIDDEN g/cc 1	MATRXDEN g/cc 2.71	NPORSEL Limestone	PERFS No
SNDERR mmho/m 1	SNDERRM mmho/m 3	SPSHIFT mV 0	SRFTEMP degF 50	SZCOR Off	TDEPTH ft 4635		

Variable Description

BOREID : Borehole I.D.
 BOTTEMP : Bottom Hole Temperature
 CASEOD : Casing O.D.
 CASETHCK : Casing Thickness
 FLUIDDEN : Fluid Density
 MATRXDEN : Matrix Density
 NPORSEL : Neutron Porosity Curve Select

PERFS : Perforation Flag
 SNDERR : Deep Sonde Error Correction
 SNDERRM : Medium Sonde Error Correction
 SPSHIFT : S.P. Baseline Offset
 SRFTEMP : Surface Temperature
 SZCOR : CN Size Cor. ?
 TDEPTH : Total Depth



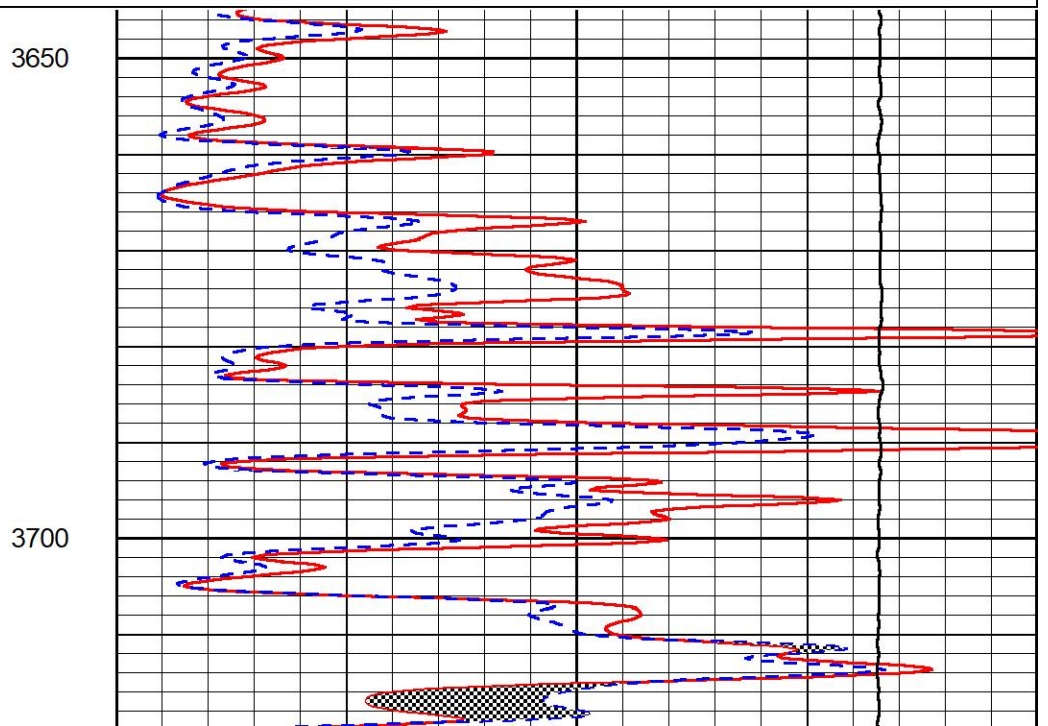
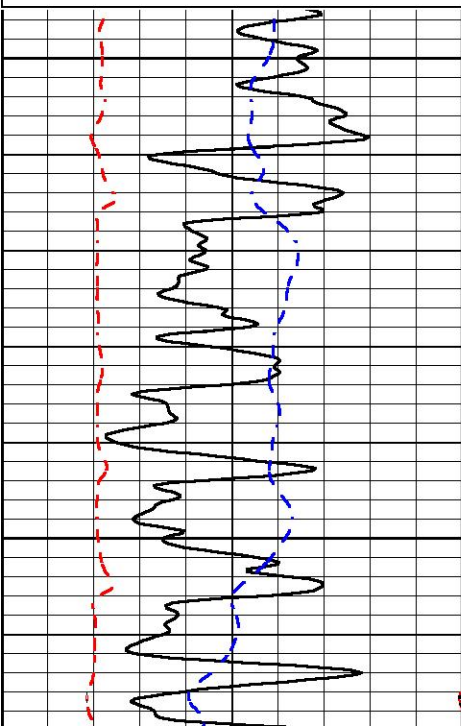
DETAIL SECTION

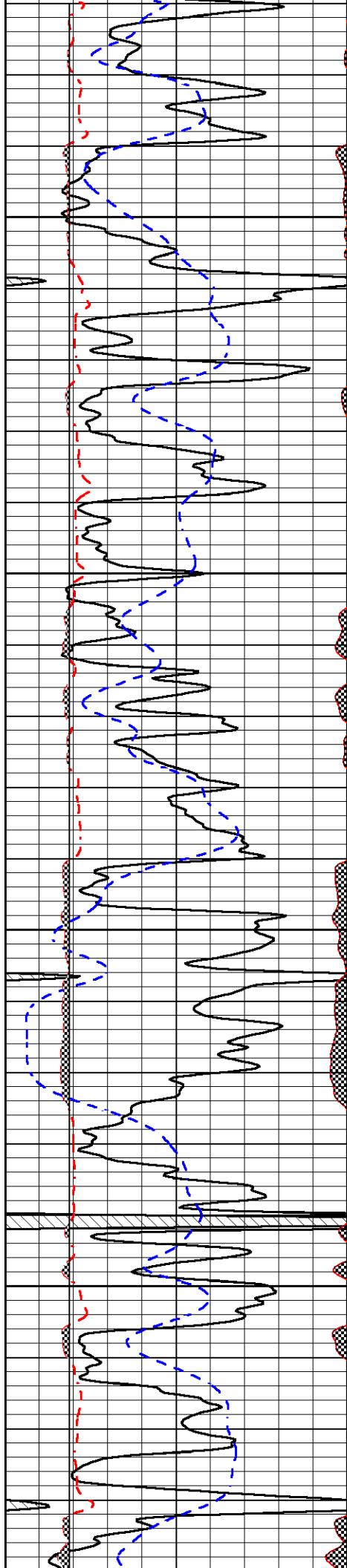
MAIN PASS

Database File amwar_patricia #1-16.db
 Dataset Pathname StkMI/pass3.1
 Presentation Format _micro
 Dataset Creation Tue Feb 06 18:24:43 2024
 Charted by Depth in Feet scaled 1:240

0	GR (GAPI)	150
6	Caliper (in)	16
2.875	mcal (in)	7.875
-200	sp (mV)	0

0	Micro Inverse 1 X 1 (Ohm-m)	40
0	Micro Normal 2" (Ohm-m)	40
10000	Line Weight (lb)	0



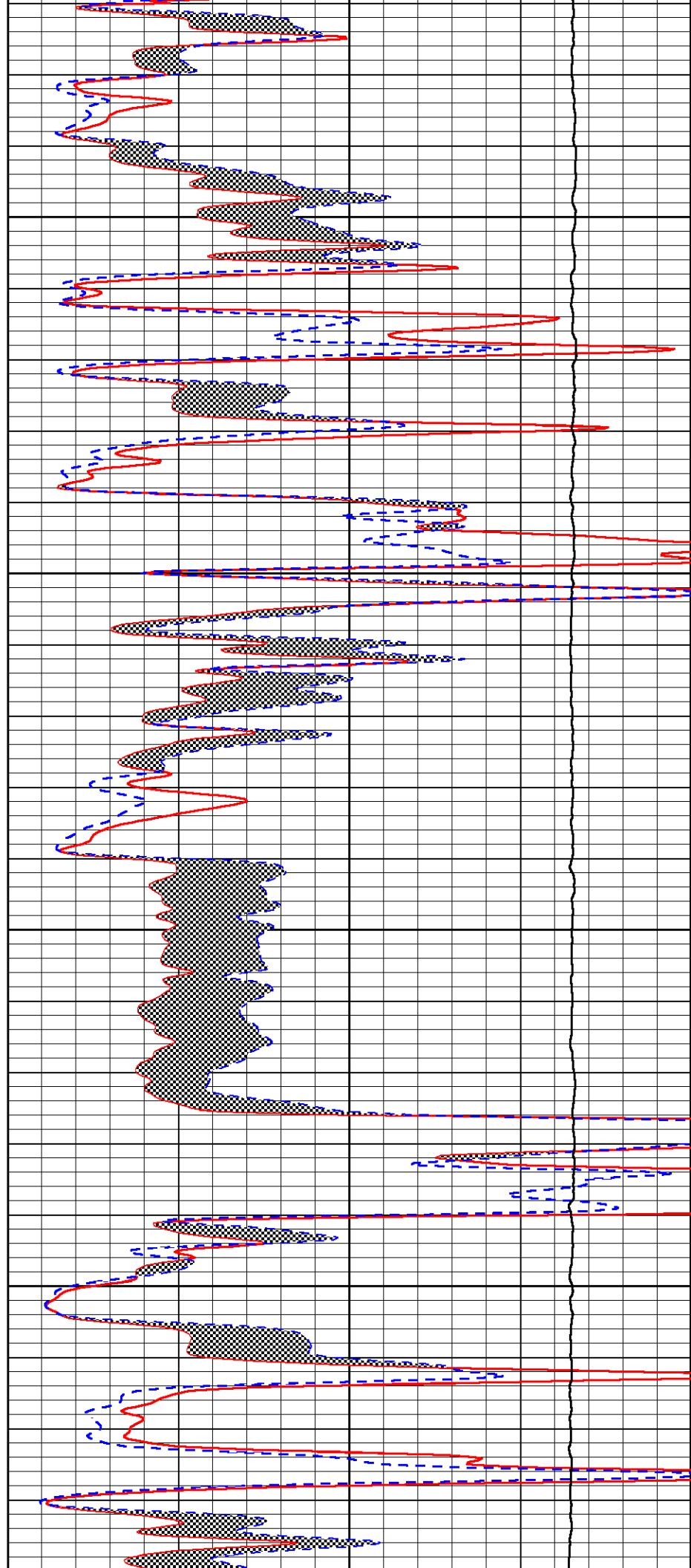


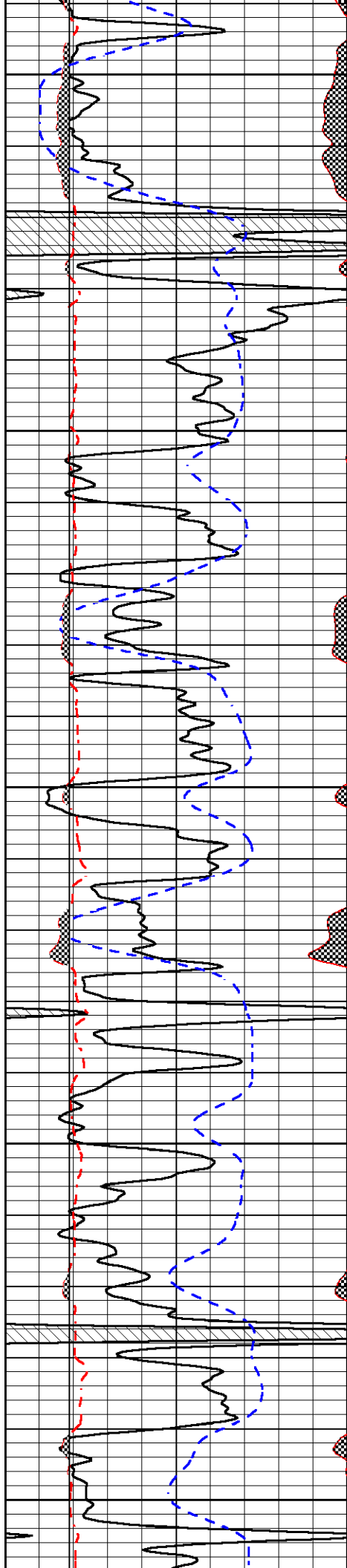
3750

3800

3850

3900





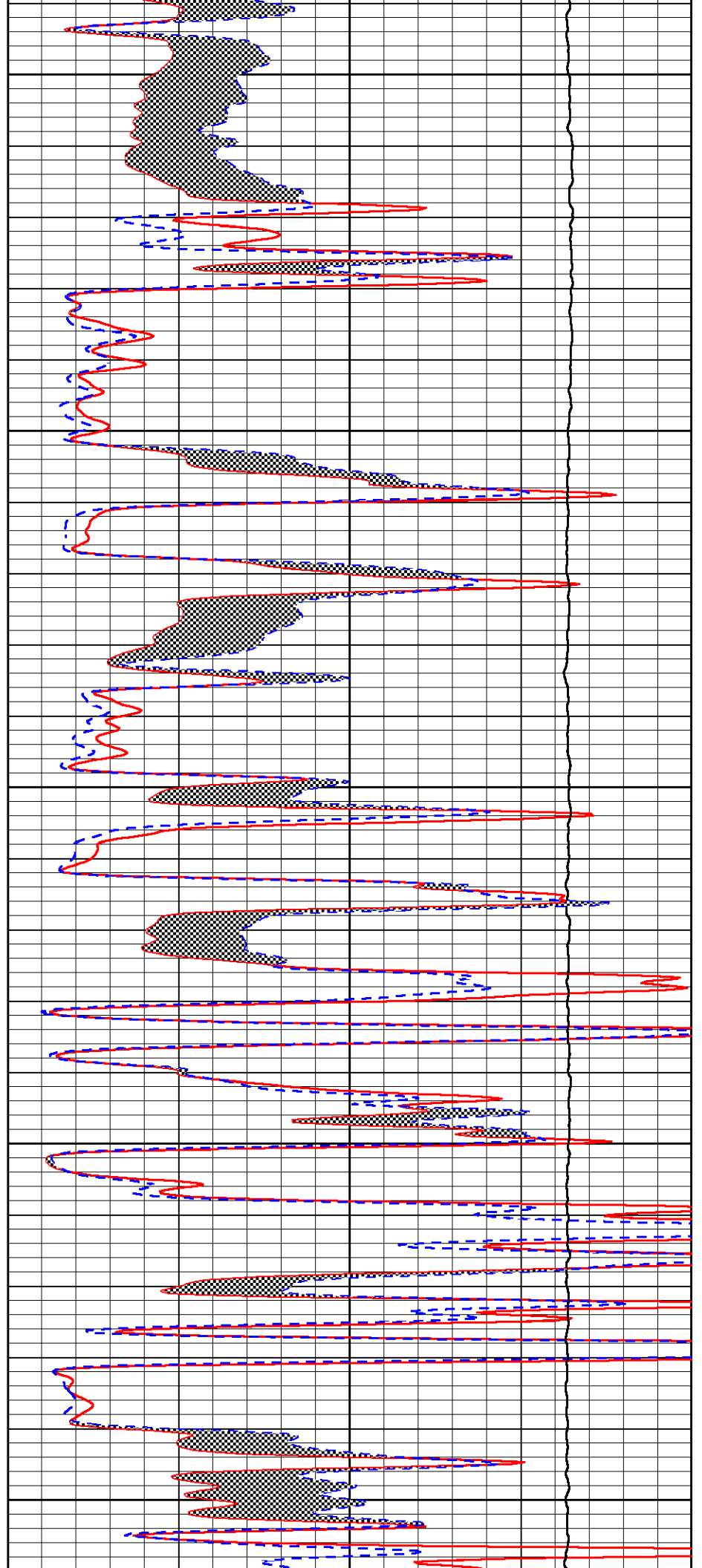
3950

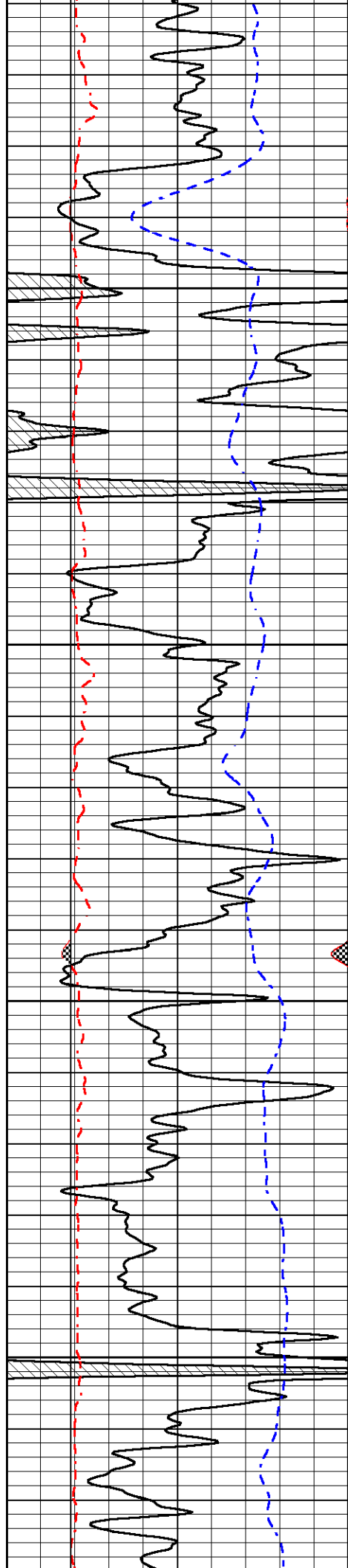
4000

4050

4100

4150



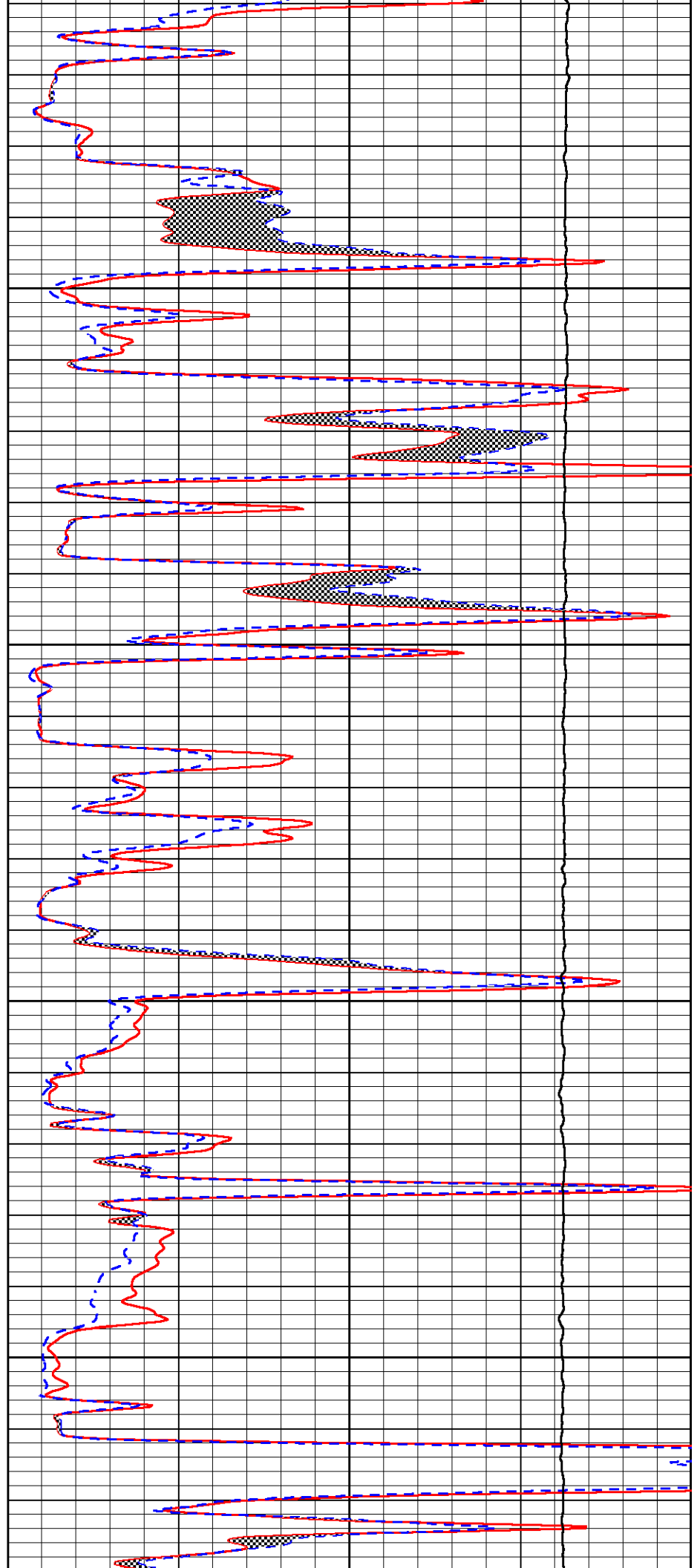


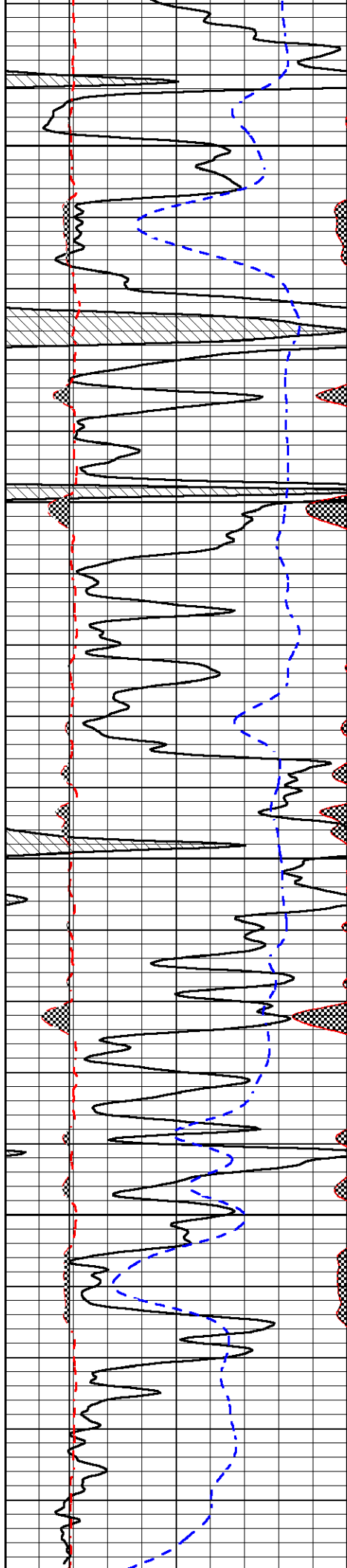
4200

4250

4300

4350





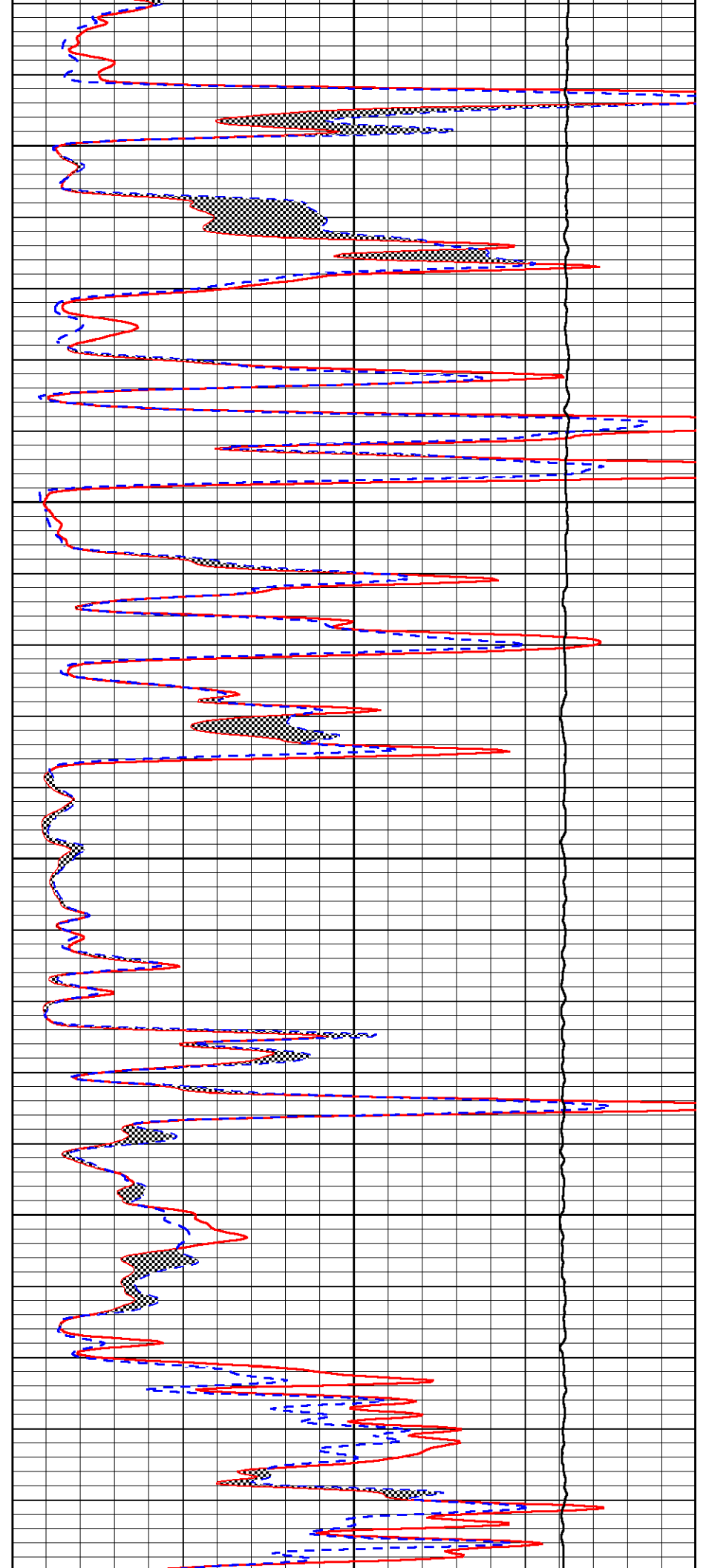
4400

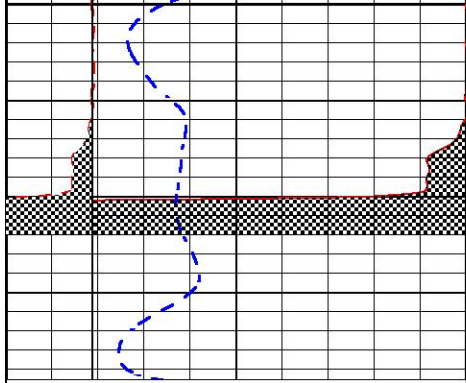
4450

4500

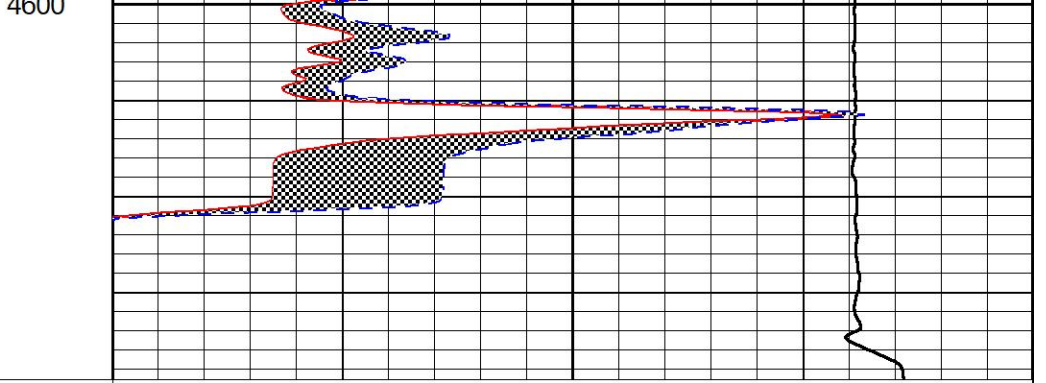
4550

4600





0	GR (GAPI)	150
6	Caliper (in)	16
2.875	mcal (in)	7.875
-200	sp (mV)	0



0	Micro Inverse 1 X 1 (Ohm-m)	40
0	Micro Normal 2" (Ohm-m)	40
10000	Line Weight (lb)	0



MIDWEST WIRELINE

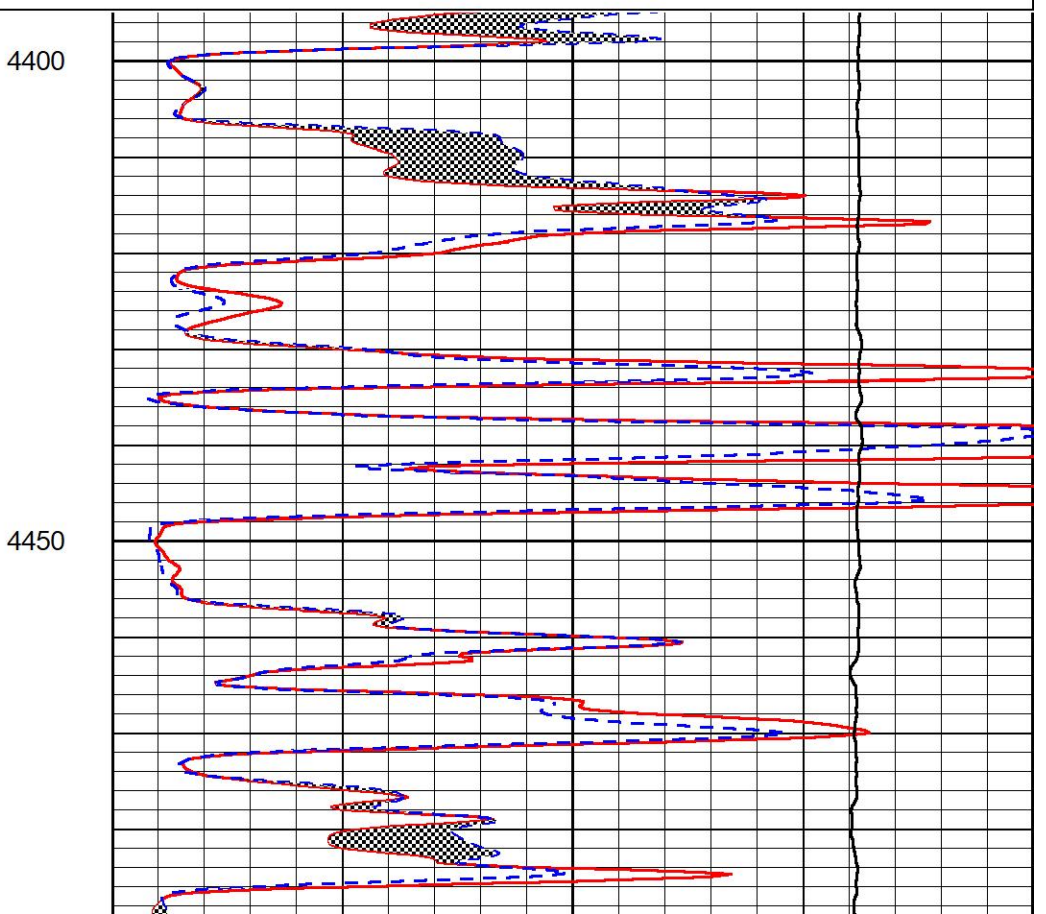
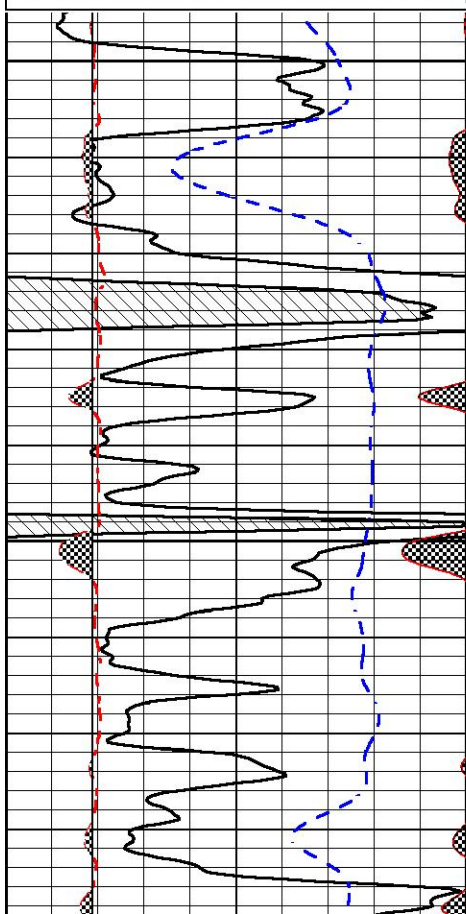
REPEAT SECTION

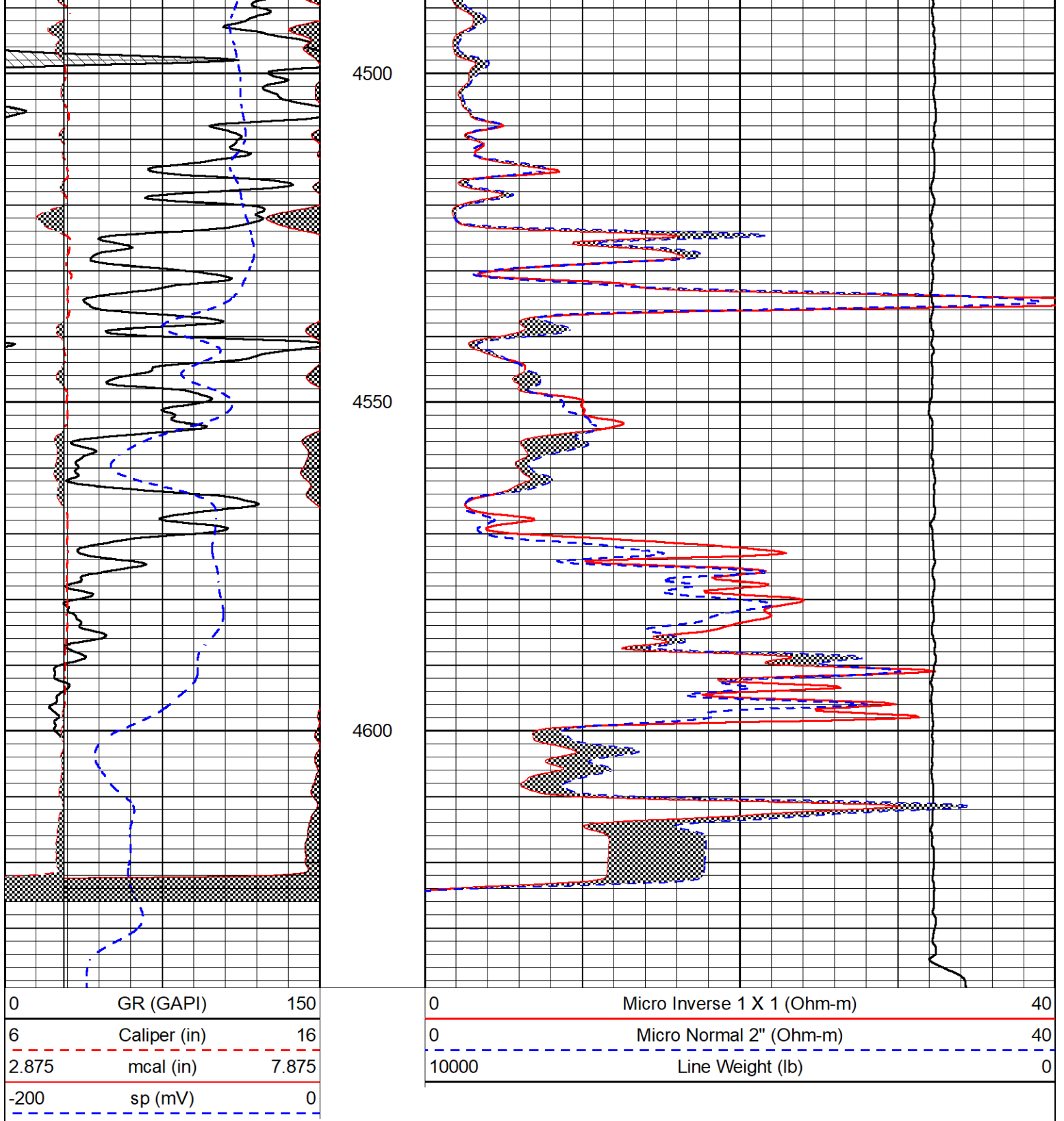
REPEAT PASS

Database File amwar_patricia #1-16.db
 Dataset Pathname StkMI/pass2.1
 Presentation Format _micro
 Dataset Creation Tue Feb 06 17:31:21 2024
 Charted by Depth in Feet scaled 1:240

0	GR (GAPI)	150
6	Caliper (in)	16
2.875	mcal (in)	7.875
-200	sp (mV)	0

0	Micro Inverse 1 X 1 (Ohm-m)	40
0	Micro Normal 2" (Ohm-m)	40
10000	Line Weight (lb)	0





Calibration Report

Database File amwar_patricia #1-16.db
 Dataset Pathname StkMI/pass3.11
 Dataset Creation Tue Feb 06 17:13:29 2024

Dual Induction Calibration Report

Serial-Model: 508-M&W
 Surface Cal Performed:

Readings

References

Results

Loop:	Air	Loop	Air	Loop		m	b
Deep	90.108	711.931	0.000	255.800	mmho/m	0.500	-53.000
Medium	99.391	703.150	0.000	255.800	mmho/m	0.440	-50.000

Microlog Calibration Report

Serial-Model: 401-PSIML
 Performed: Mon Sep 25 22:02:56 2023

	Readings		References			Results	
	Zero	Cal	Zero	Cal		m	b
Normal	0.0000	1.0000	0.0000	1.0000	Ohm-m	12500.0000	-1.0000
Inverse	0.0000	1.0000	0.0000	1.0000	Ohm-m	11000.0000	-0.7500
Caliper	1.0052	1.0858	5.0000	16.5000	in	142.7190	-137.8100

Compensated Density Calibration Report

Serial-Model: 305-24-M&W
 Source / Verifier: 20762B / 2ci
 Master Calibration Performed: Wed Oct 11 15:50:54 2023
 Before Survey Verification Performed:
 After Survey Verification Performed:

Master Calibration

	Density		Far Detector	Near Detector	
Magnesium	1.680	g/cc	5028.88	5761.57	cps
Aluminum	2.560	g/cc	1122.37	3952.02	cps
Spine Angle = 75.89			Density/Spine Ratio = 0.569		
	Size		Reading		
Small Ring	4.00	in	1.74		
Large Ring	14.00	in	1.38		

Compensated Neutron Calibration Report

Serial Number: 207
 Tool Model: M&W

CALIBRATION

Detector	Readings	Target	Normalization
Short Space	6240.00 cps	1000.00 cps	1.6025
Long Space	460.00 cps	1000.00 cps	1.9500

PRE-SURVEY VERIFICATION

	Detector	Readings	Measured	Target
1)	Short Space	cps		
	Long Space	cps	pu	pu
2)	Short Space	cps		
	Long Space	cps	pu	
3)	Short Space	cps		
	Long Space	cps	pu	

POST-SURVEY VERIFICATION

	Detector	Readings	Measured	Target
1)	Short Space Long Space	cps cps	pu	pu
2)	Short Space Long Space	cps cps	pu	pu
3)	Short Space Long Space	cps cps	pu	pu

Gamma Ray Calibration Report

Serial Number:	102		
Tool Model:	M&W		
Performed:	Mon Sep 25 22:02:33 2023		
Calibrator Value:	1.0	GAPI	
Background Reading:	0.0	cps	
Calibrator Reading:	1.0	cps	
Sensitivity:	0.5250	GAPI/cps	



MIDWEST WIRELINE

Company American Warrior, Inc.

Well Patricia #1-16

Field Unnamed

County Thomas

State Kansas