



**MIDWEST SURVEYS**  
 LOGGING - PERFORATING - CONSULTING SERVICES  
 P.O. Box 68, Osawatomie, KS 66064  
 913 / 755 - 2128

**GAMMA RAY / NEUTRON / CCL**

File No. Company **Colt Energy, Inc.**

Well **Latta No.-22**

Field **Iola**

County **Allen** State **Kansas**

Location **704' FSL & 1177' FEL**

Other Services **Perforate**

Sec. 4 **Temp. 24S** **Rge. 18e** **Elevation 1000'**

Permament Datum **GL** **Elevation 1000'**

Log Measured From **GL** **K.B. NA**

Drilling Measured From **GL** **D.F. NA**

Date **03-29-2024**

Run Number **One**

Depth Logger **1046.0**

Bottom Logged Interval **1025.8**

Top Log Interval **20.0**

Fluid Level **Full**

Type Fluid **Water**

Density / Viscosity **NA**

Salinity - PPM Cl **NA**

Max Recorded Temp **NA**

Estimated Cement Top **0.0**

Equipment No. **104** **Osawatimie**

Recorded By **Steve Windisch**

Witnessed By **Wes Moors**

BORE-HOLE RECORD				CASING RECORD			
RUN	BIT	FROM	TO	SIZE	WGT	FROM	TO
One	12.25"	0.0	20.0	8.625"	28.0	0.0	20.0
Two	6.75"	20.0	1046.0	4.50"	10.5	0.0	1033.9
					Set	At	

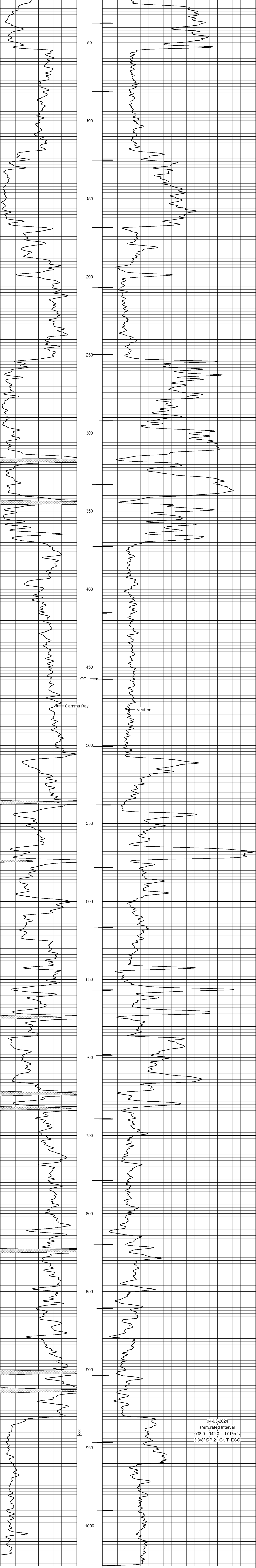
<<< Fold Here >>>

All interpretations are opinions based on inferences from electrical or other measurements and we cannot and do not guarantee the accuracy or correctness of any interpretation, and we shall not, except in the case of gross or willful negligence on our part, be liable or responsible for any loss, costs, damages, or expenses incurred or sustained by anyone resulting from any interpretation made by any of our officers, agents or employees. These interpretations are also subject to our general terms and conditions set out in our current Price Schedule.

**Comments**

Drilling Contractor :  
 Colt Energy, Inc.

Database File: **latta 22.db**  
 Dataset Pathname: **pass1**  
 Presentation Format: **gr-n-ccl**  
 Dataset Creation: **Fri Mar 29 12:38:49 2024 by Log SCH 111116**  
 Charted by: **Depth in Feet scaled 1:240**



04-03-2024  
 Perforated Interval  
 938.0 - 942.0 17 Perfs  
 3 3/8" DP 21 Gr. T. ECG