



**MIDWEST SURVEYS**  
 LOGGING - PERFORATING - CONSULTING SERVICES  
 P.O. Box 68, Osawatomie, KS 66064  
 913 / 755 - 2128

**GAMMA RAY / NEUTRON / CCL**

File No. Company S & K Oil Production, Inc.  
 Well Swisher No. I-17  
 Field Unnamed  
 County Bourbon State Kansas

Location 990 FSL & 2970' FEL  
 NE-SE-SW  
 Sec. 18 Twp. 25S Rge. 22E  
 Permanent Datum GL Elevation 1054'  
 Log Measured From GL  
 Drilling Measured From GL  
 Other Services Perforate

Date 10-31-2023  
 Run Number One  
 Depth Diller 722.0  
 Depth Logger 713.0  
 Bottom Logged Interval 712.0  
 Top Log Interval 20.0  
 Fluid Level Full

Type Fluid Water  
 Density / Viscosity NA  
 Salinity - PPM Cl NA  
 Max Recorded Temp NA  
 Estimated Cement Top 0.0  
 Equipment No. 102 Location Osawatomie  
 Recorded By Gary Windisch  
 Witnessed By Steve Jackson

BORE-HOLE RECORD				CASING RECORD			
RUN	BIT	FROM	TO	SIZE	WGT.	FROM	TO
One	9.875"	0.0	20.0	7.00"	15.0	0.0	20.0
Two	5.875"	20.0	722.0	2.875"	6.5	0.0	717.3

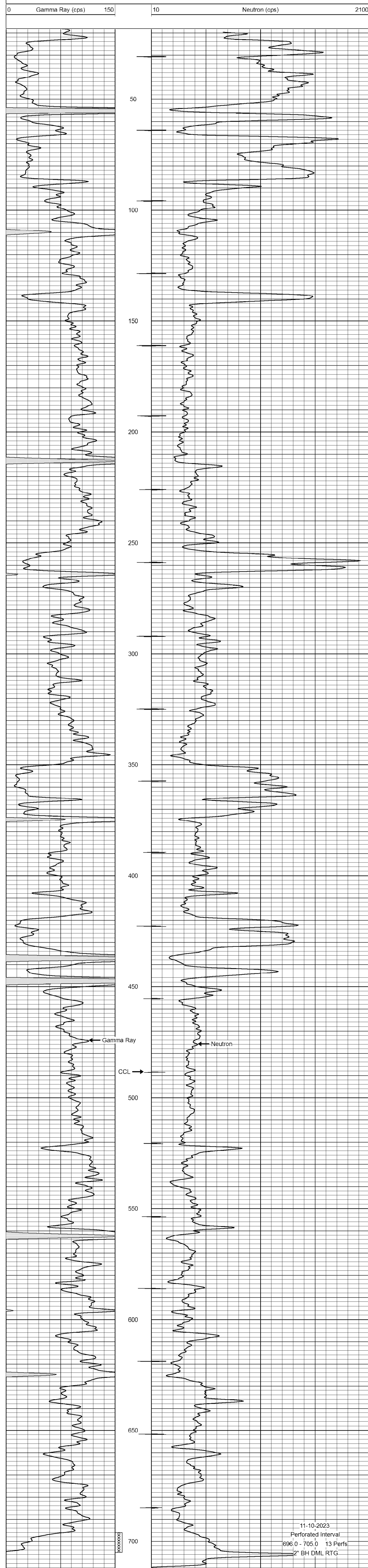
<<< Fold Here >>>

All interpretations are opinions based on inferences from electrical or other measurements and we cannot and do not guarantee the accuracy or correctness of any interpretation, and we shall not, except in the case of gross or willful negligence on our part, be liable or responsible for any loss, costs, damages, or expenses incurred or sustained by anyone resulting from any interpretation made by any of our officers, agents or employees. These interpretations are also subject to our general terms and conditions set out in our current Price Schedule.

Comments

Drilling Contractor :  
 McGown Drilling, Inc

Database File: swisher 17i.db  
 Dataset Pathname: pass1  
 Presentation Format: gr-n-ccl  
 Dataset Creation: Tue Oct 31 15:10:35 2023 by Log SCH 111116  
 Charted by: Depth in Feet scaled 1:240



11-10-2023  
 Perforated Interval  
 696.0 - 705.0 13 Perfs  
 2" BH DML RTG