



MIDWEST SURVEYS
 LOGGING - PERFORATING - CONSULTING SERVICES
 P.O. Box 68, Osawatomie, KS 66064
 913 / 755 - 2128

GAMMA RAY / NEUTRON / CCL

File No.

Company **S & K Oil Production, Inc.**

Well **George No. 1-4**

Field **Blythe**

County **Bourbon** State **Kansas**

Location **2970' FSL & 4290' FEL**

SE-SW-NW

Sec. 17

Twp. 25s

Rge. 22e

Elevation 936'

Perforate

Other Services

Permanent Datum

Log Measured From

Drilling Measured From

Date

Run Number

Depth Driller

Depth Logger

Bottom Logged Interval

Top Log Interval

Fluid Level

Type Fluid

Density / Viscosity

Salinity - PPM Cl

Max Recorded Temp

Estimated Cement Top

Equipment No.

Location

Recorded By

Witnessed By

RUN

BIT

FROM

TO

SIZE

WGT

FROM

TO

One

Two

5.875"

21.8

622.0

2.875"

6.5

0.0

0.0

21.8

618.6

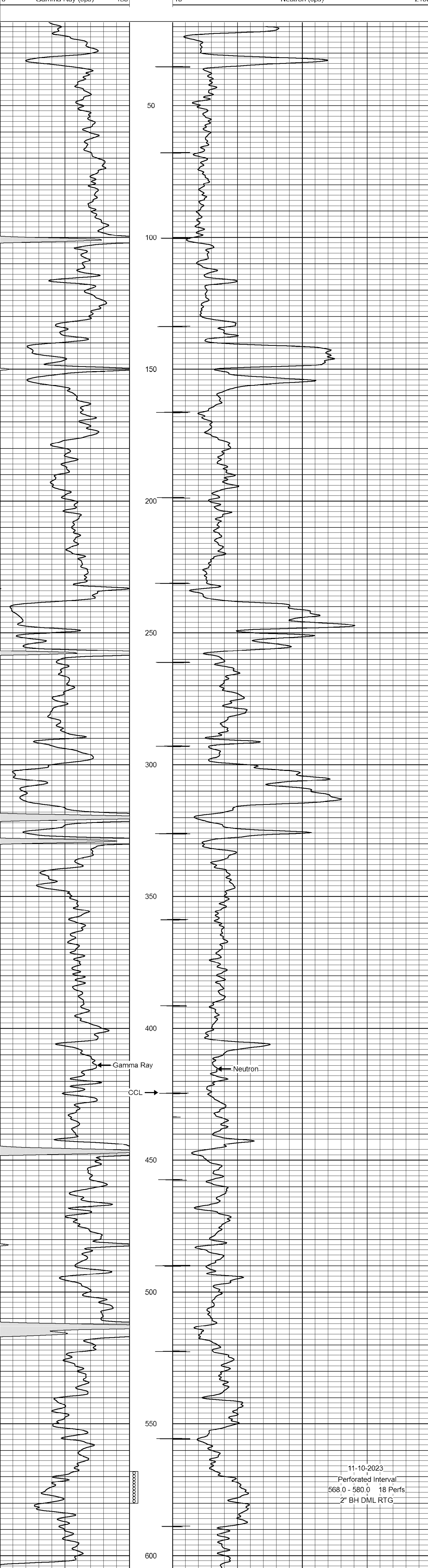
<<< Fold Here >>>

All interpretations are opinions based on inferences from electrical or other measurements and we cannot and do not guarantee the accuracy or correctness of any interpretation, and we shall not, except in the case of gross or willful negligence on our part, be liable or responsible for any loss, costs, damages, or expenses incurred or sustained by anyone resulting from any interpretation made by any of our officers, agents or employees. These interpretations are also subject to our general terms and conditions set out in our current Price Schedule.

Comments

Drilling Contractor :
 McGown Drilling, Inc

Database File: george 4i.db
 Dataset Pathname: pass1
 Presentation Format: gr-n-ccl
 Dataset Creation: Tue Oct 31 11:47:45 2023 by Log SCH 111116
 Charted by: Depth in Feet scaled 1:240



11-10-2023
 Perforated Interval
 568.0 - 580.0 18 Perfs
 2" BH DML RTG