



MIDWEST SURVEYS
 LOGGING - PERFORATING - CONSOLIDATING SERVICES
 P.O. Box 68, Osawatomie, KS 66064
 913 / 755 - 2128

GAMMA RAY / NEUTRON / CCL

File No. Company S & K Oil Production, Inc.
 Well George No. I-3
 Field Blythe
 County Bourbon State Kansas

Location 2970' FSL & 4620' FEL
 S12-SW-NW

Other Services Perforate

Sec 17 Twp 25S Rge 22E
 Permanent Datum GL Elevation 978'
 Log Measured From GL
 Drilling Measured From GL

Date 10-31-2023

Run Number One
 Depth Driller 662.0
 Depth Logger 648.0
 Bottom Logged Interval 647.0
 Top Log Interval 20.0
 Fluid Level Full

Type Fluid Water
 Density / Viscosity NA
 Salinity - PPM Cl NA
 Max Recorded Temp NA
 Estimated Cement Top 0.0

Equipment No. 102 Location Osawatomie
 Recorded By Gary Wifridsch
 Witnessed By Steve Jackson

BORE-HOLE RECORD				CASING RECORD			
NO.	BIT	FROM	TO	SIZE	WGT.	FROM	TO
One	9.875"	0.0	20.0	7.00"	15.0	0.0	20.0
Two	5.875"	20.0	662.0	2.875"	6.5	0.0	658.0

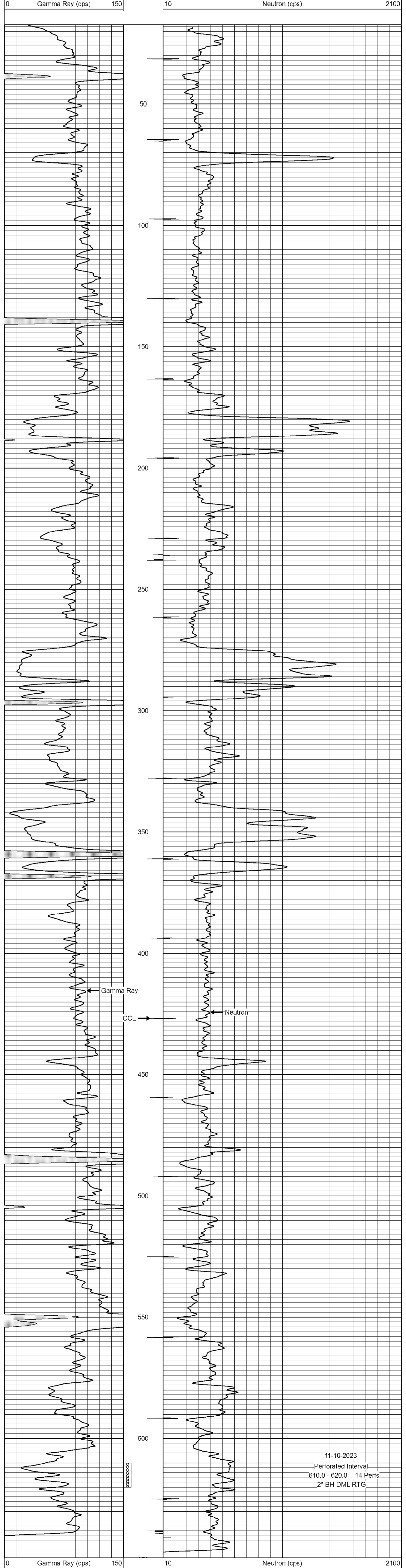
<<< Fold Here >>>

All interpretations are opinions based on inferences from electrical or other measurements and we cannot and do not guarantee the accuracy or correctness of any interpretation, and we shall not, except in the case of gross or willful negligence on our part, be liable or responsible for any loss, costs, damages, or expenses incurred or sustained by anyone resulting from any interpretation made by any of our officers, agents or employees. These interpretations are also subject to our general terms and conditions set out in our current Price Schedule.

Comments

Drilling Contractor :
 McGown Drilling, Inc

Database File: george 3i.db
 Dataset Pathname: pass1
 Presentation Format: gr-n-ccl
 Dataset Creation: Tue Oct 31 11:15:02 2023 by Log SCH 111116
 Charted by: Depth in Feet scaled 1:240



11-10-2023
 Perforated Interval
 610.0 - 620.0 14 Perfs
 2" BH DML RTG