



MICRO LOG

Company VAL ENERGY INC
 Well J.O. BROWN # 3-2
 Field ALBRIGHT
 County COWLEY State KANSAS

Location: API #: 15-035-24757-00-00
 NE SW SW NE
 2115' FNL & 2140' FEL
 SEC 2 TWP 34S RGE 5E
 Permanent Datum GL Elevation 1255
 Log Measured From KB
 Drilling Measured From KB
 Other Services
 DIL
 CDLN
 Elevation
 K.B. 1264
 D.F. 1263
 G.L. 1255

Date	6-12-2022
Run Number	ONE
Depth Driller	3420
Depth Logger	3415
Bottom Logged Interval	3413
Top Log Interval	SURFACE
Casing Driller	8.625" @ 200'
Casing Logger	8.625" @ 200'
Bit Size	7.875"
Type Fluid in Hole	MUD
Density / Viscosity	9.6 / 46
pH / Fluid Loss	
Source of Sample	PIT
Rm @ Meas. Temp	2.5 @ 70
Rmf @ Meas. Temp	2.0 @ 70
Rmc @ Meas. Temp	3.0 @ 70
Source of Rmf / Rmc	CALCULATED
Rm @ BHT	1 @ 110
Time Circulation Stopped	4:30 PM
Time Logger on Bottom	9:00 PM
Maximum Recorded Temperature	110
Equipment Number	OW2
Location	HOMINY, OK
Recorded By	SHELDON TYLER
Witnessed By	MR. WOLFE
	KIDD
	TAFIT

<<< Fold Here >>>

All interpretations are opinions based on inferences from electrical or other measurements and we cannot and do not guarantee the accuracy or correctness of any interpretation, and we shall not, except in the case of gross or willful negligence on our part, be liable or responsible for any loss, costs, damages, or expenses incurred or sustained by anyone resulting from any interpretation made by any of our officers, agents or employees. These interpretations are also subject to our general terms and conditions set out in our current Price Schedule.

Comments

FILE # OW2-9072 VAL ENERGY
 THANK YOU FOR USING OSAGE WIRELINE

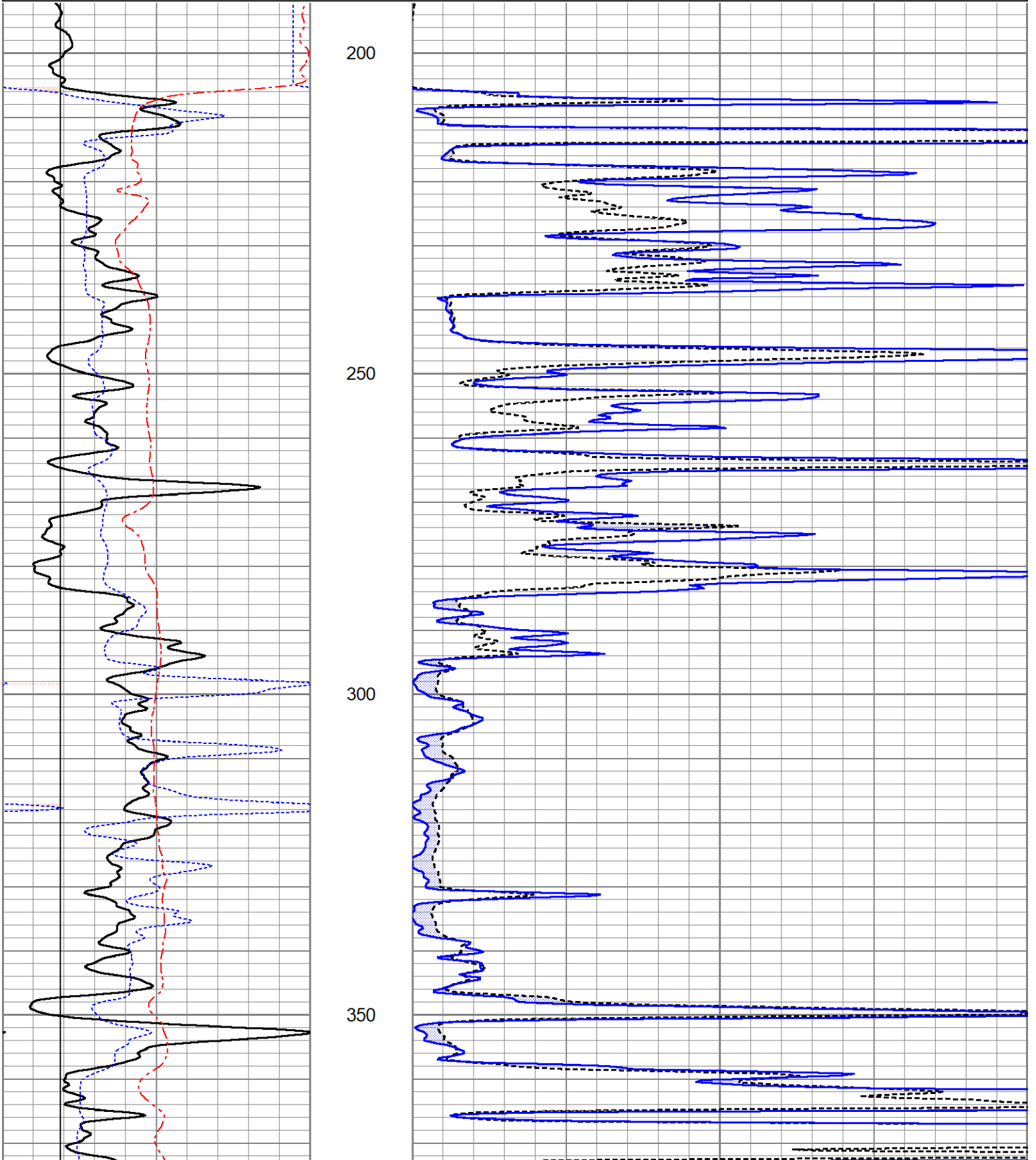


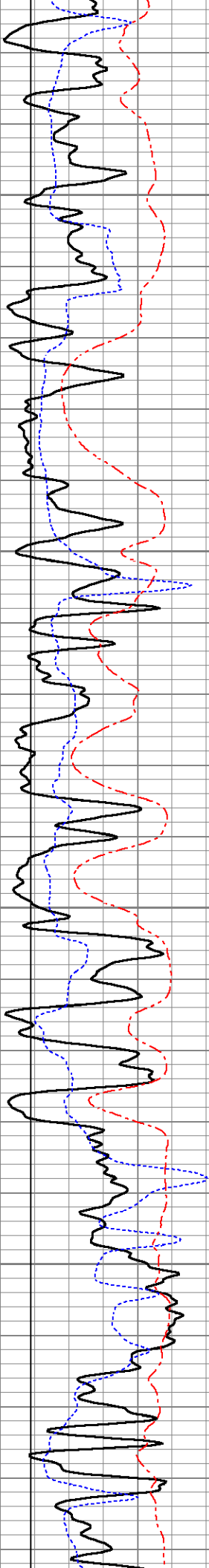
5" MICRO SECTION

Database File ow2-9072 val energy.db
 Dataset Pathname pass2.11
 Presentation Format st_digitalmicro_6-16
 Dataset Creation Sun Jun 12 22:10:53 2022
 Charted by Depth in Feet scaled 1:240

0	Gamma Ray (GAPI)	150
6	Micro Caliper (in)	16
6	Bit Size (in)	16
0	Spontaneous Potential (mV)	180

0	Micro Normal (Ohm-m)	40
0	Micro Inverse (Ohm-m)	40



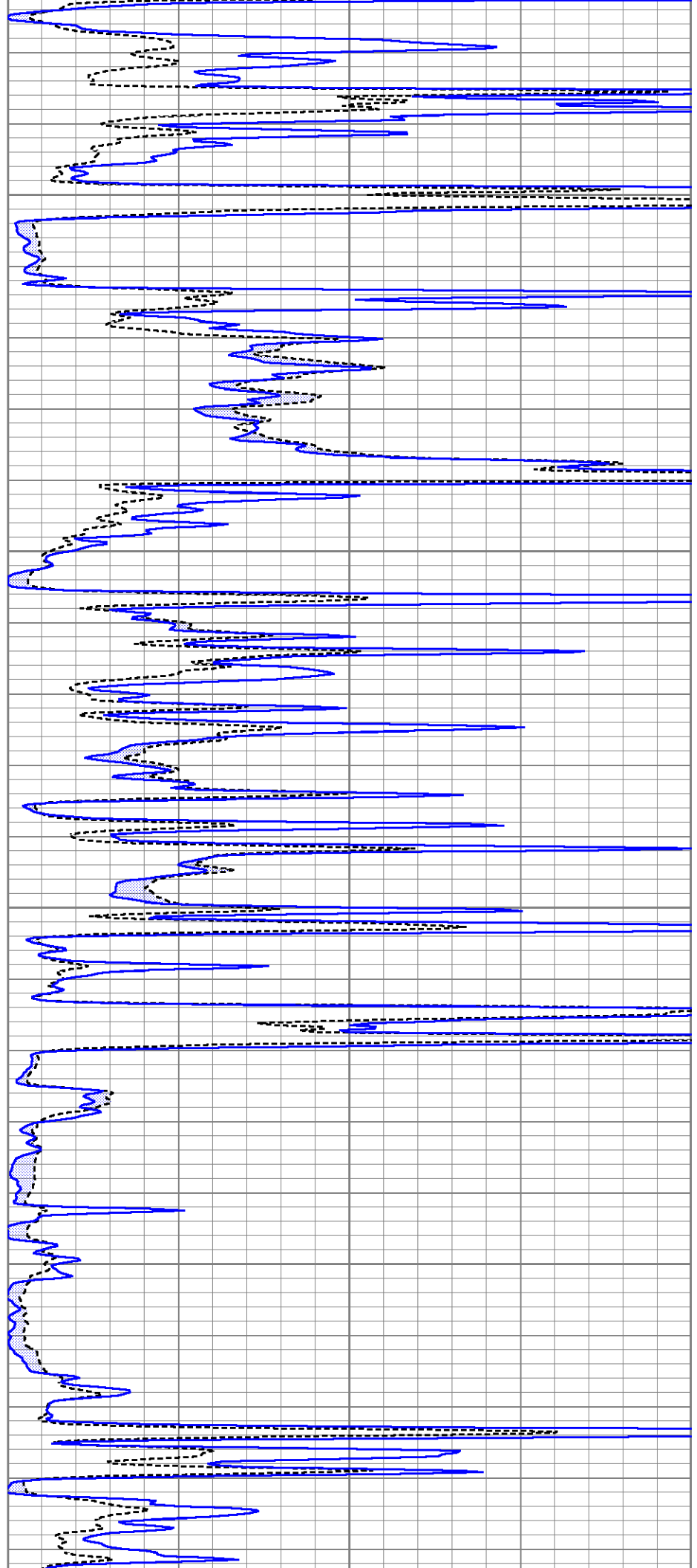


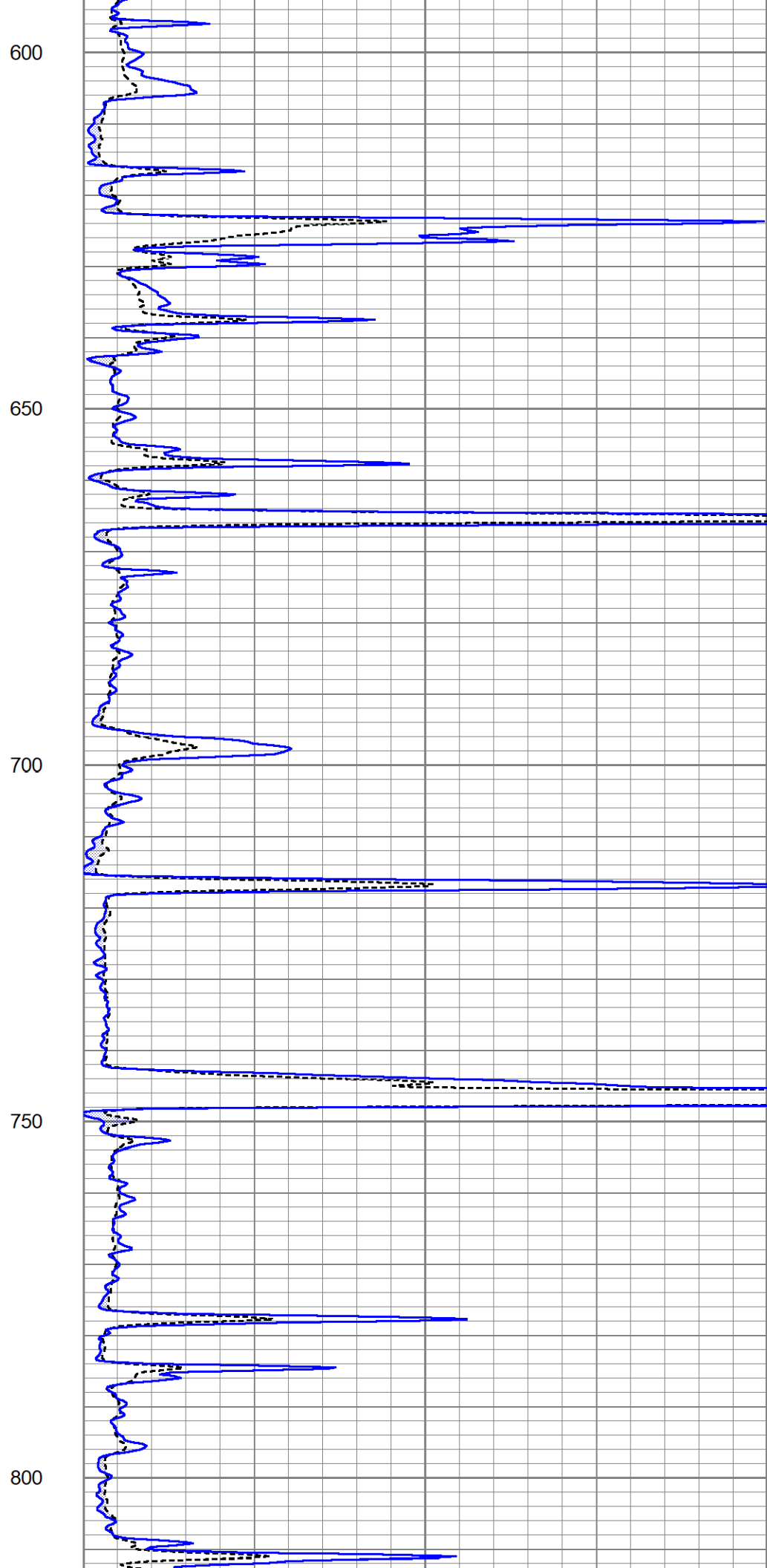
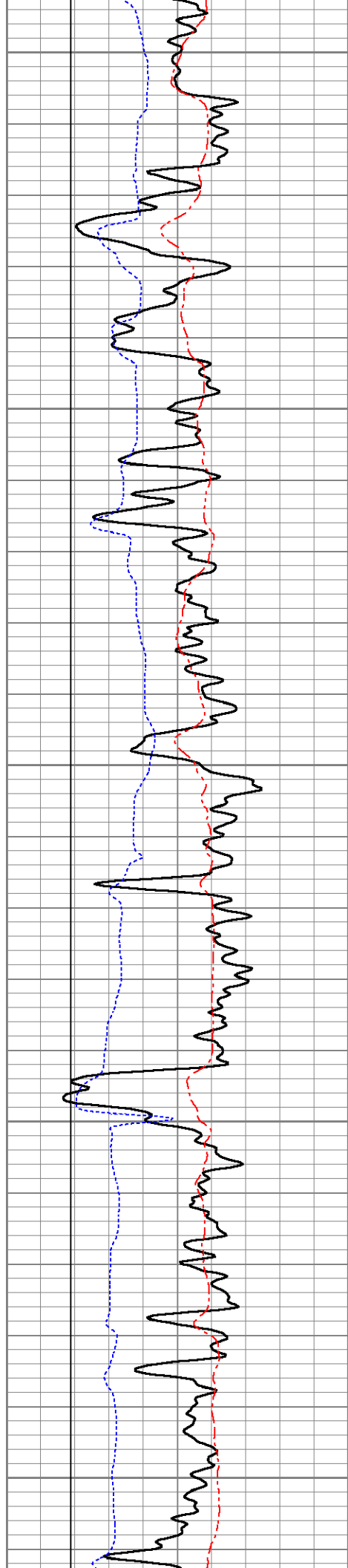
400

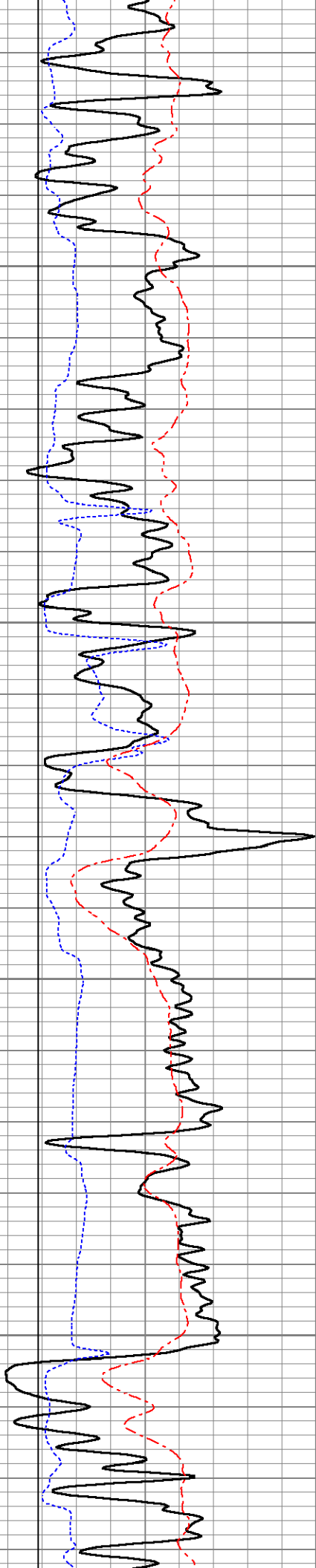
450

500

550





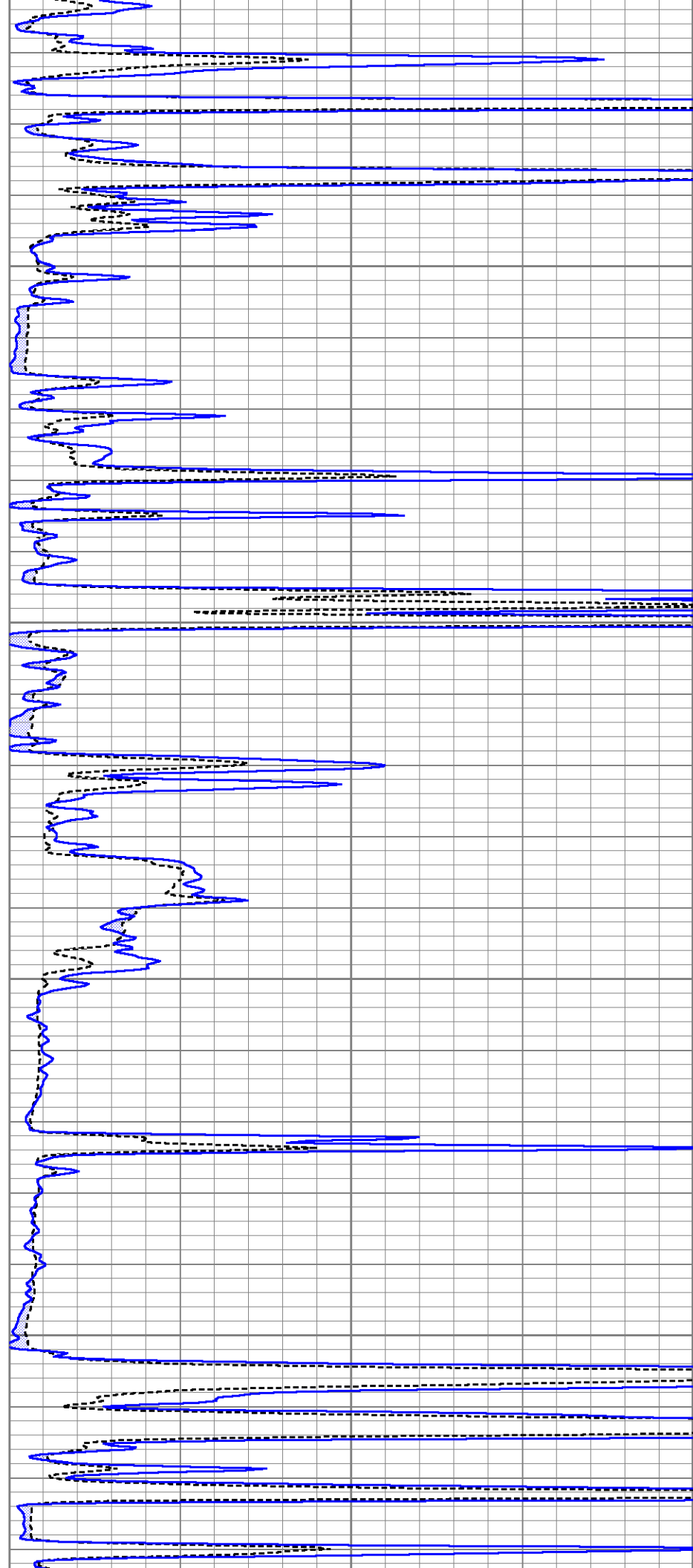


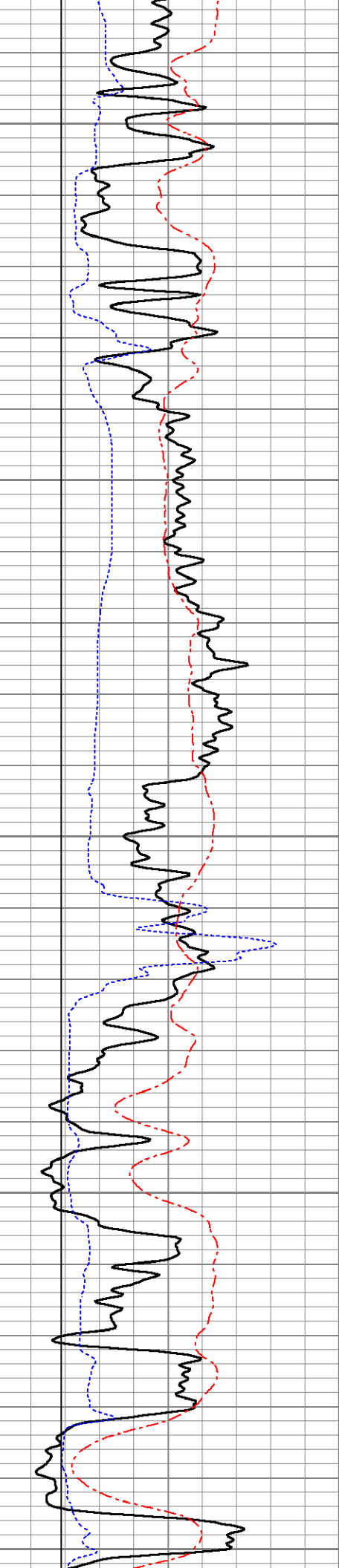
850

900

950

1000





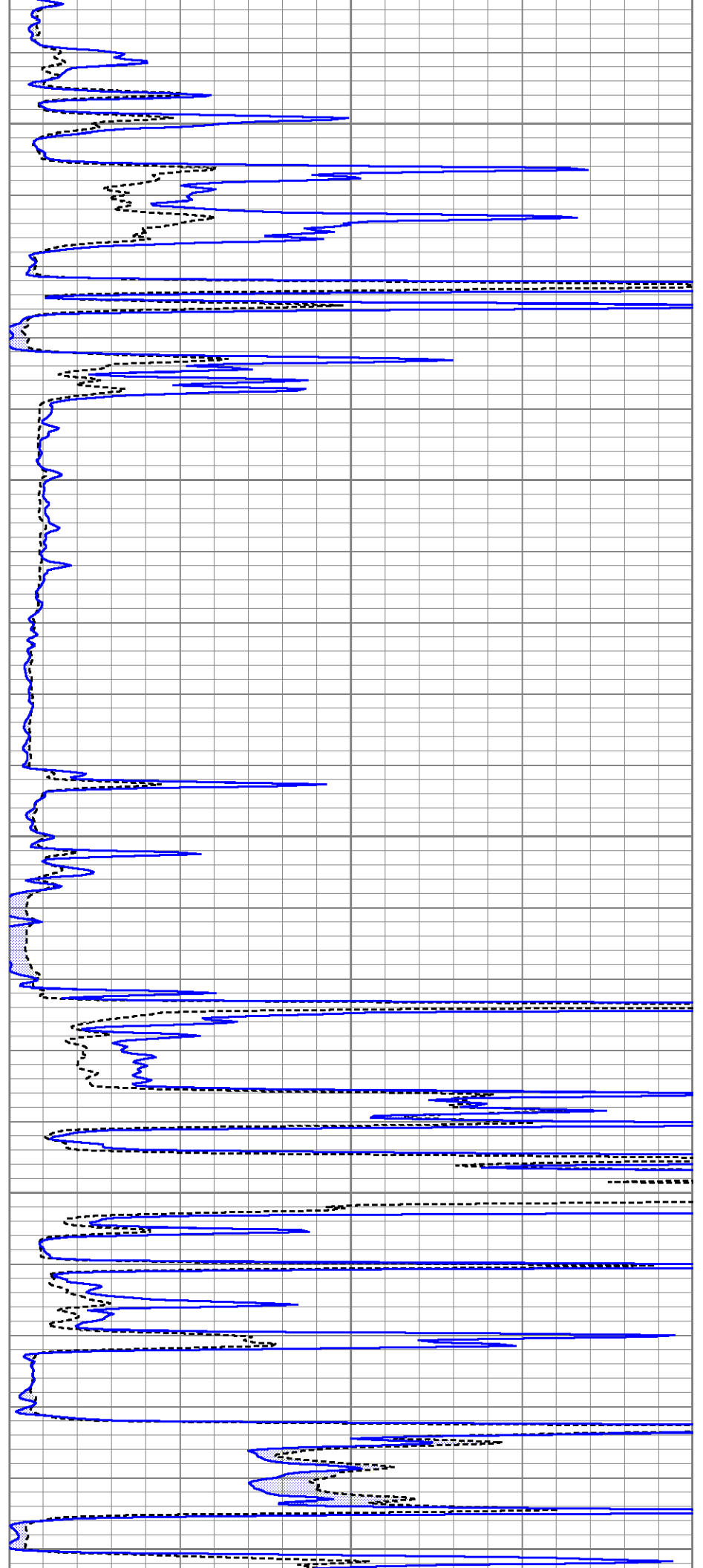
1050

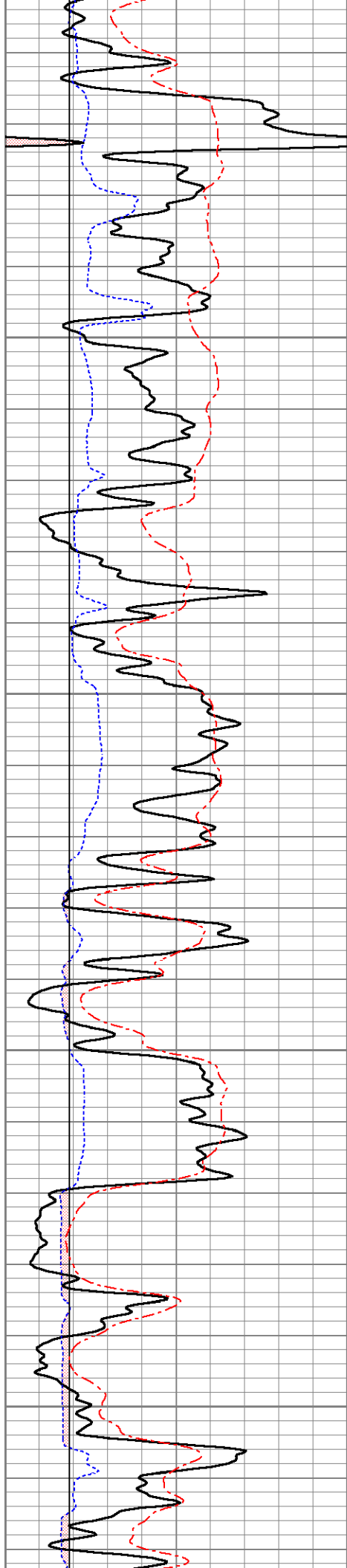
1100

1150

1200

1250



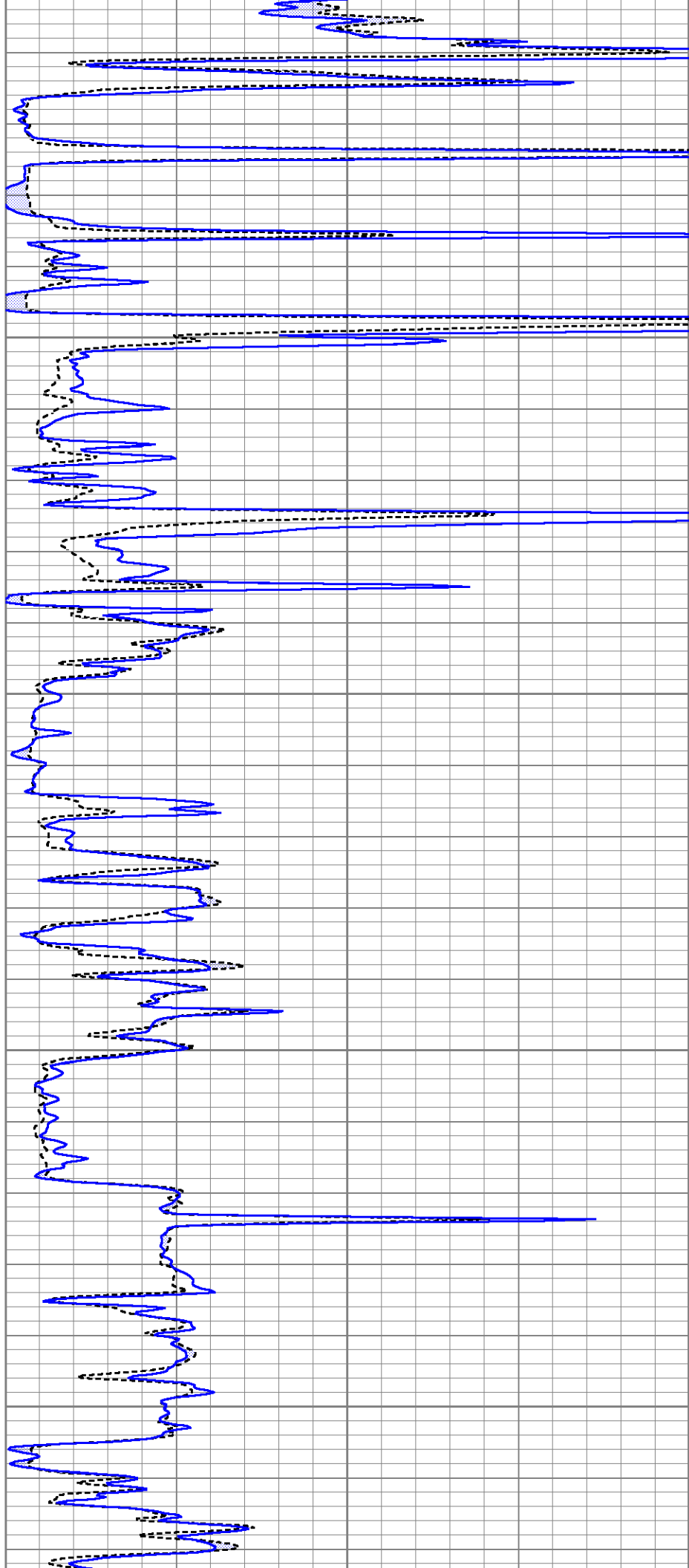


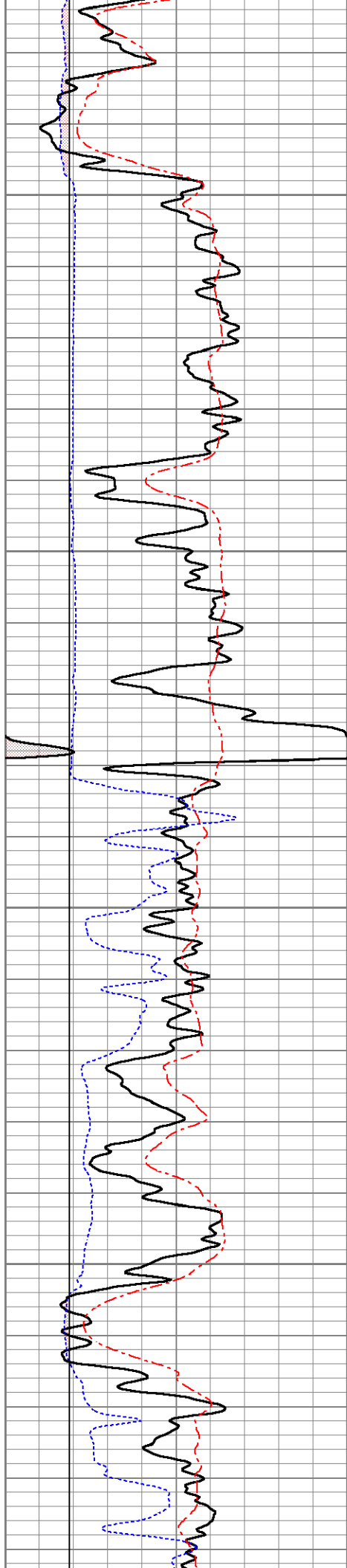
1300

1350

1400

1450



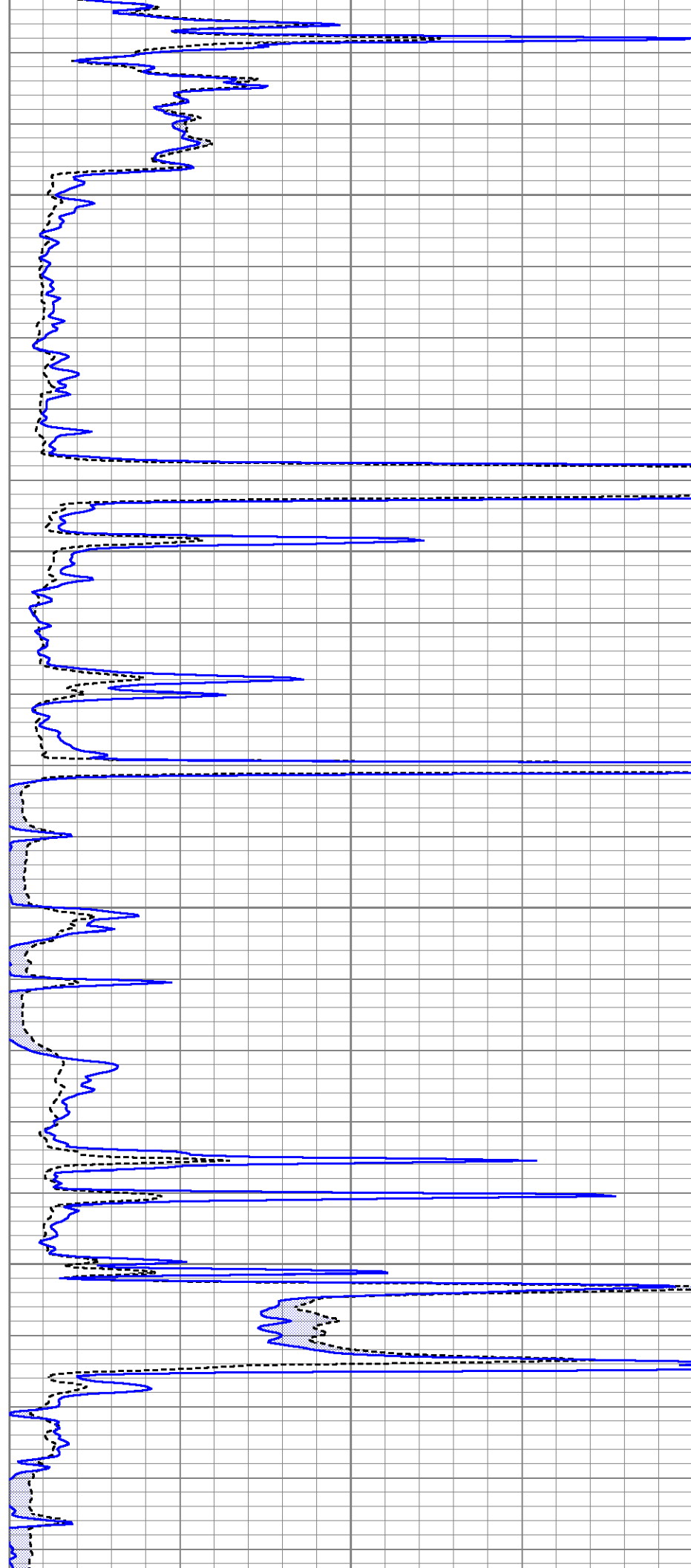


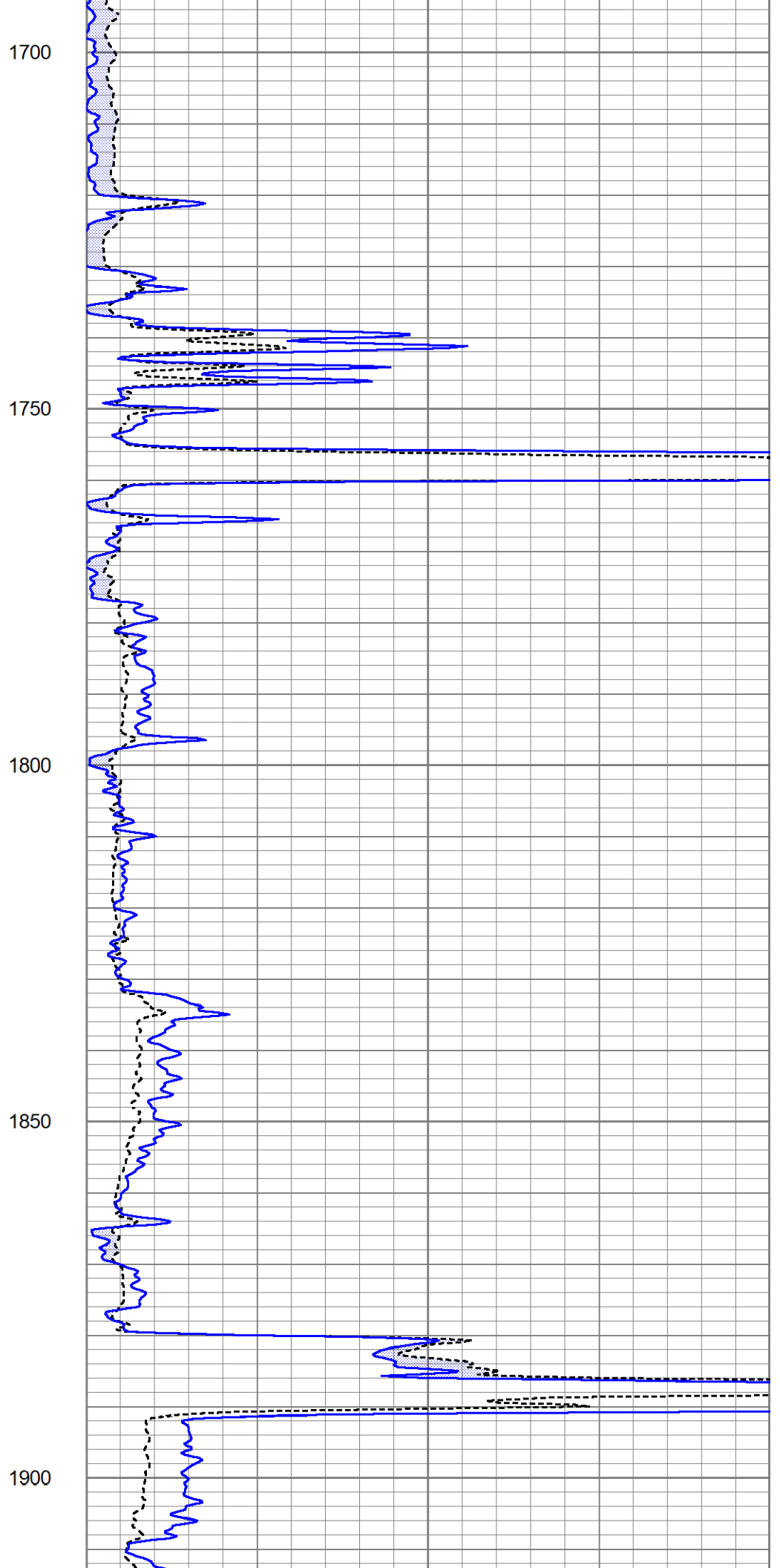
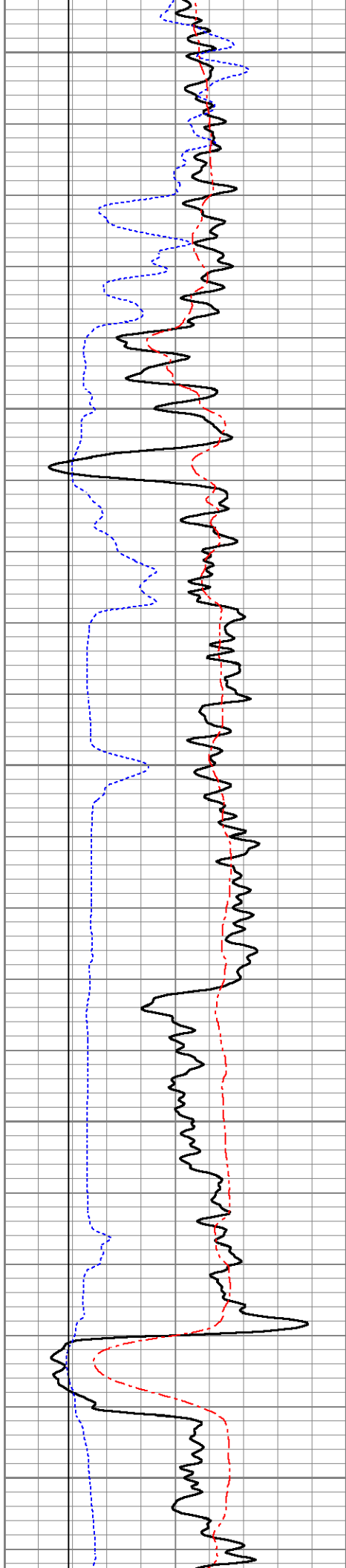
1500

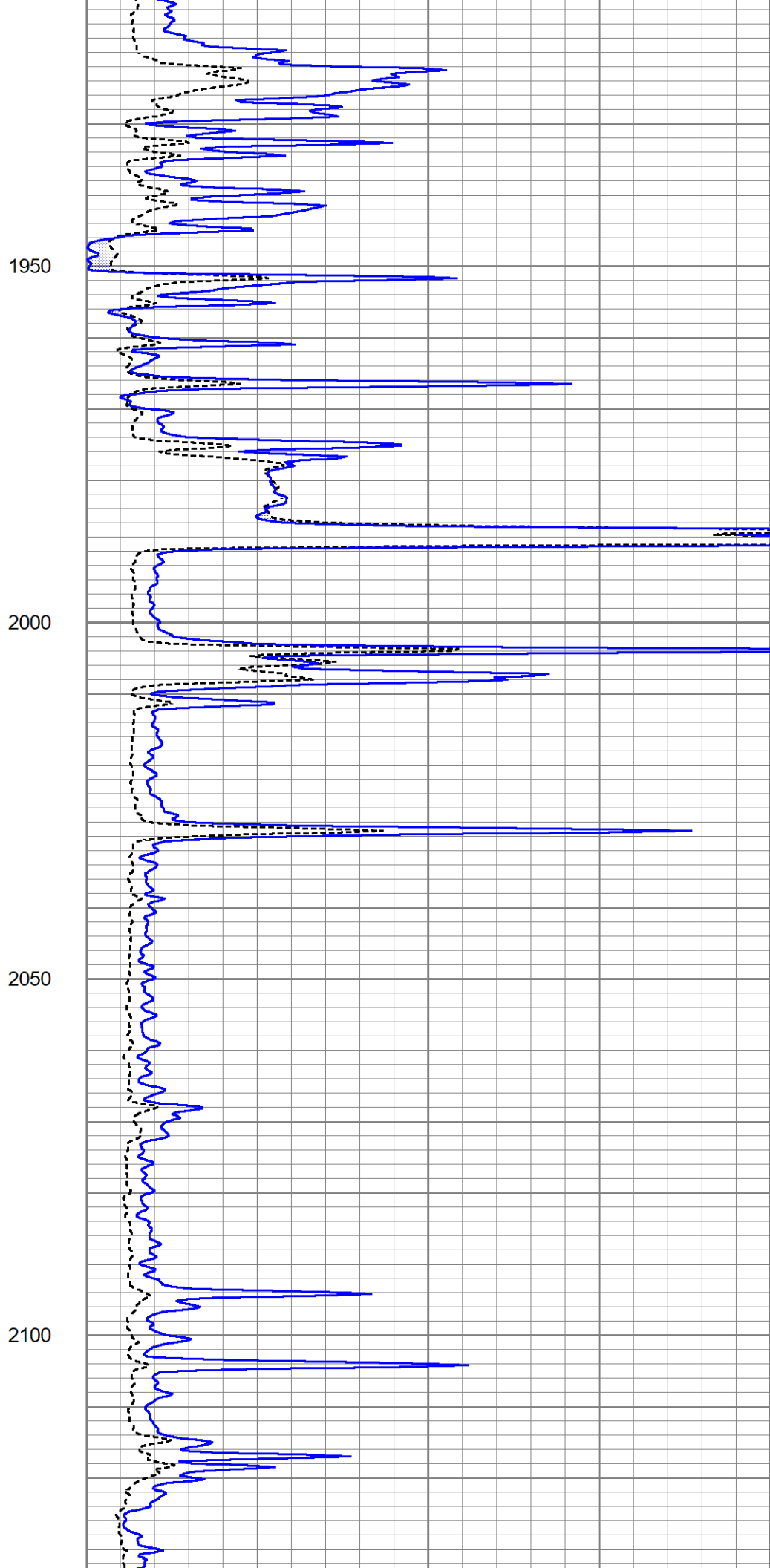
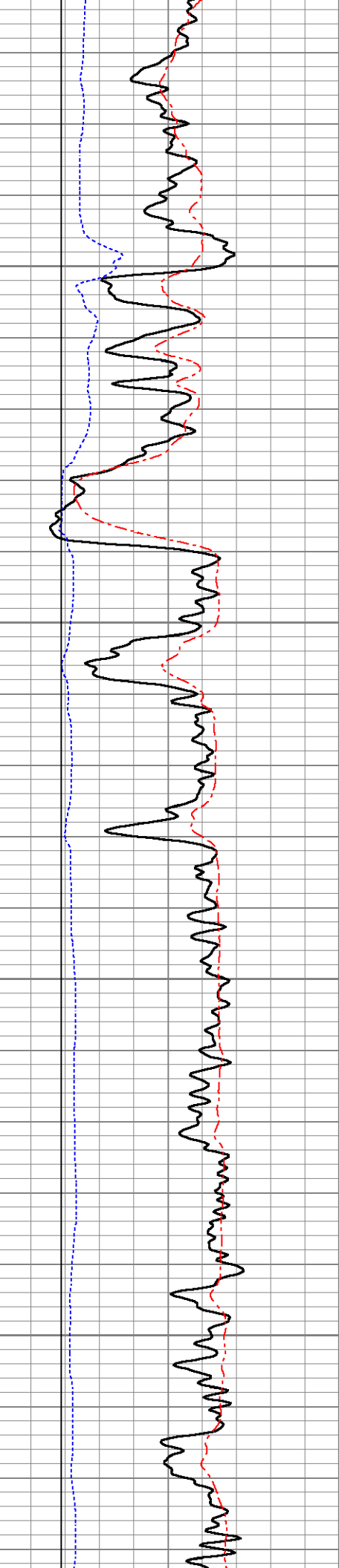
1550

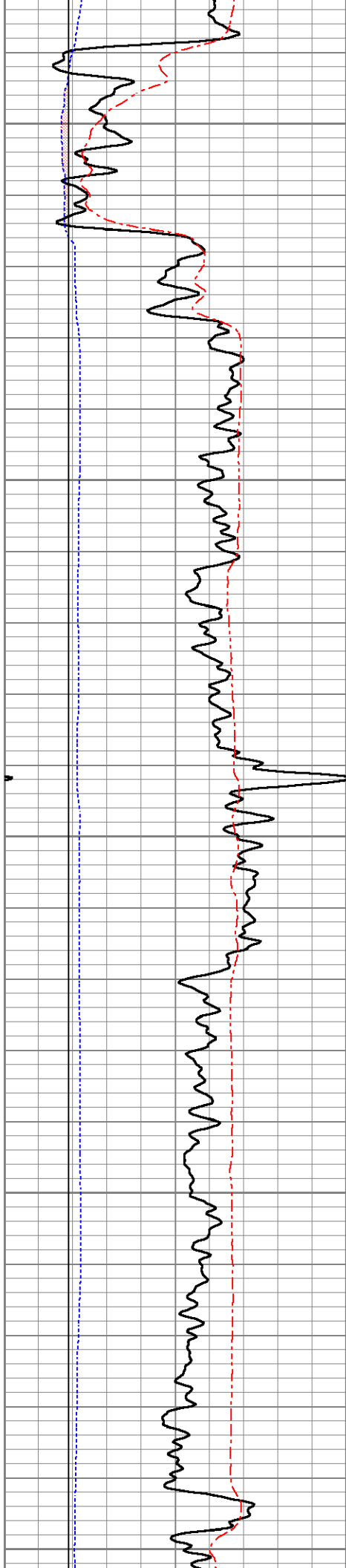
1600

1650









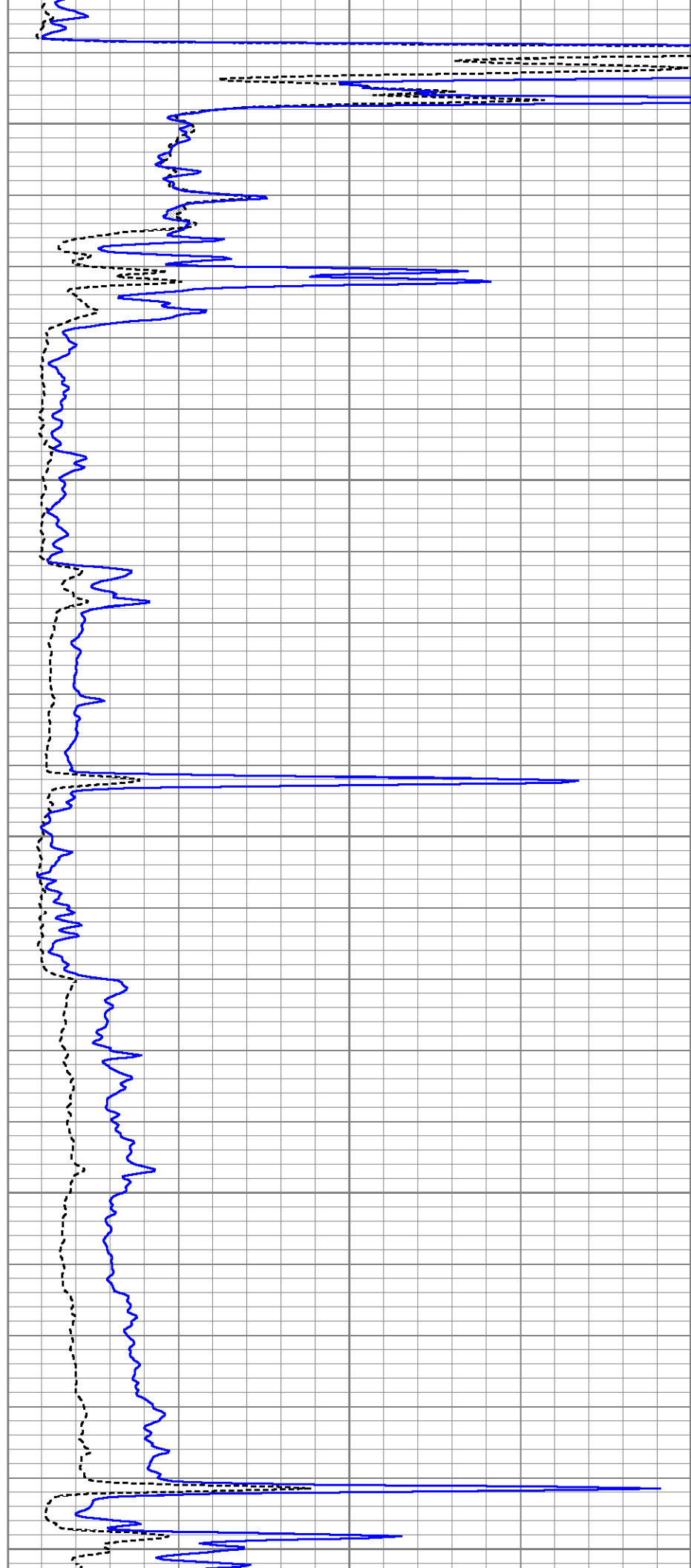
2150

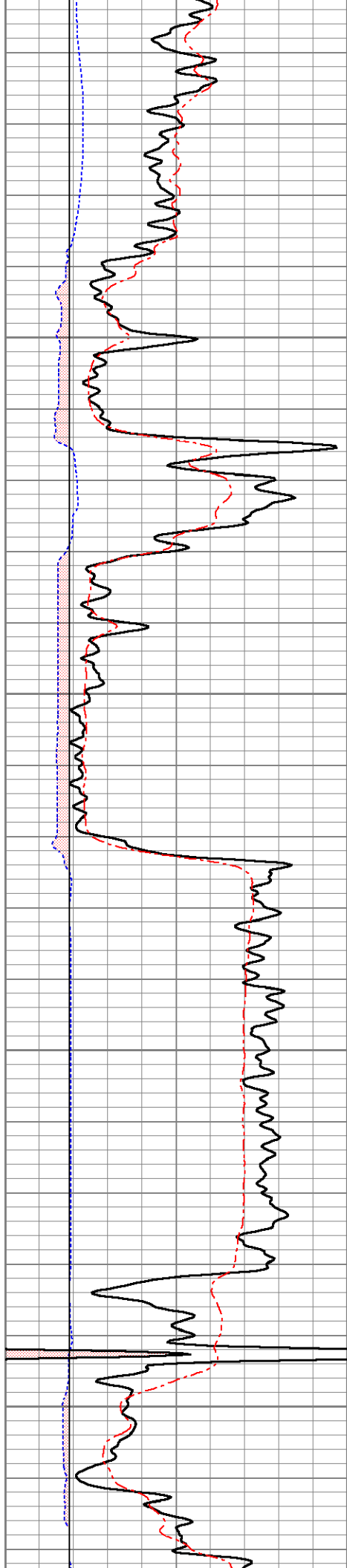
2200

2250

2300

2350



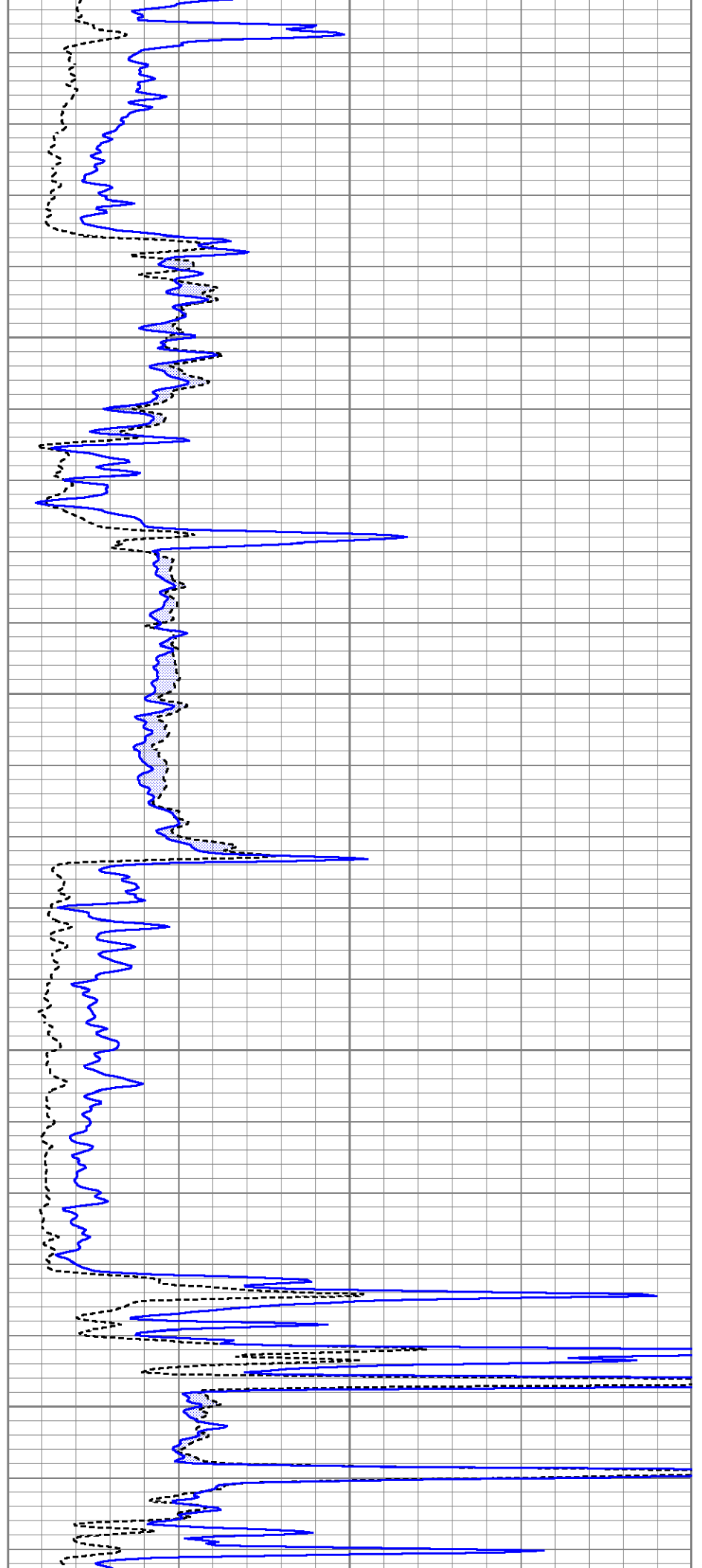


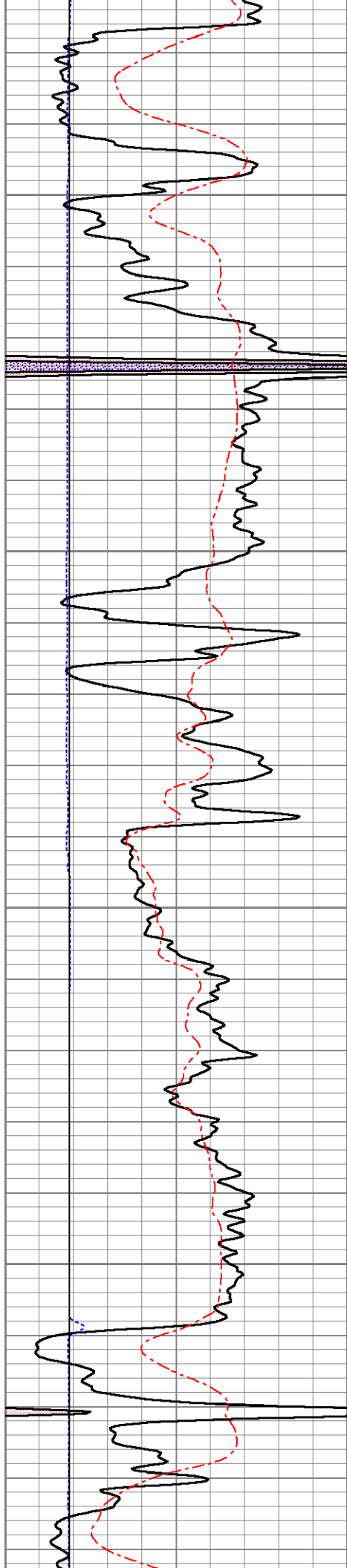
2400

2450

2500

2550



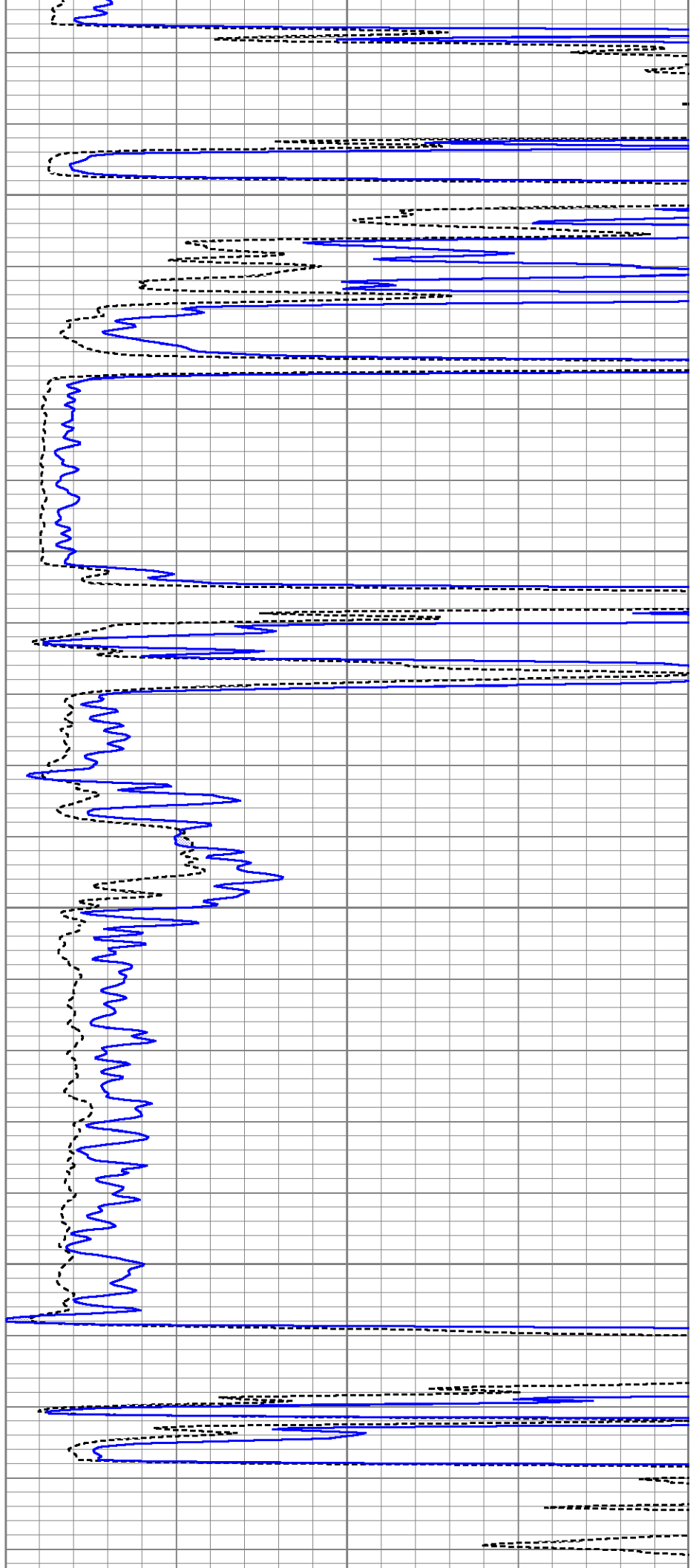


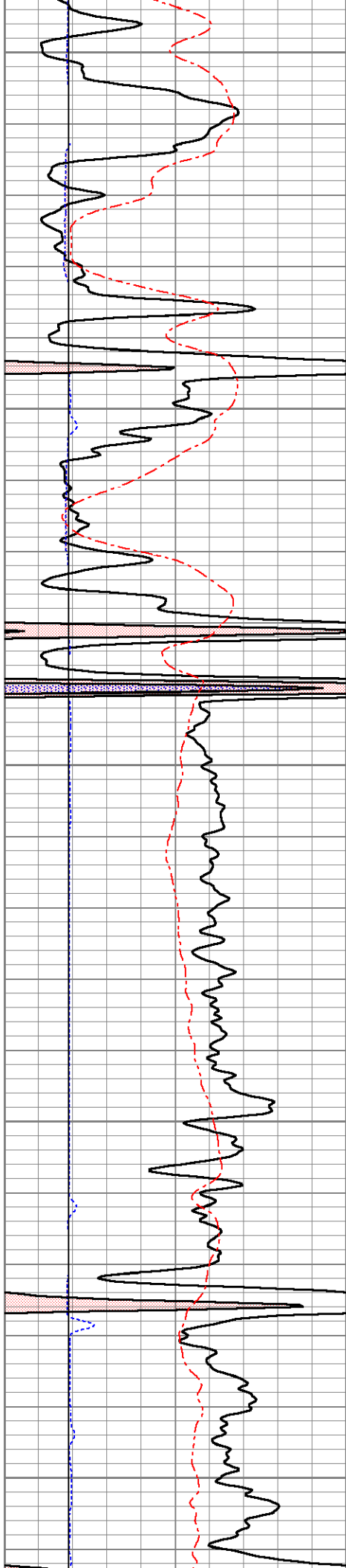
2600

2650

2700

2750





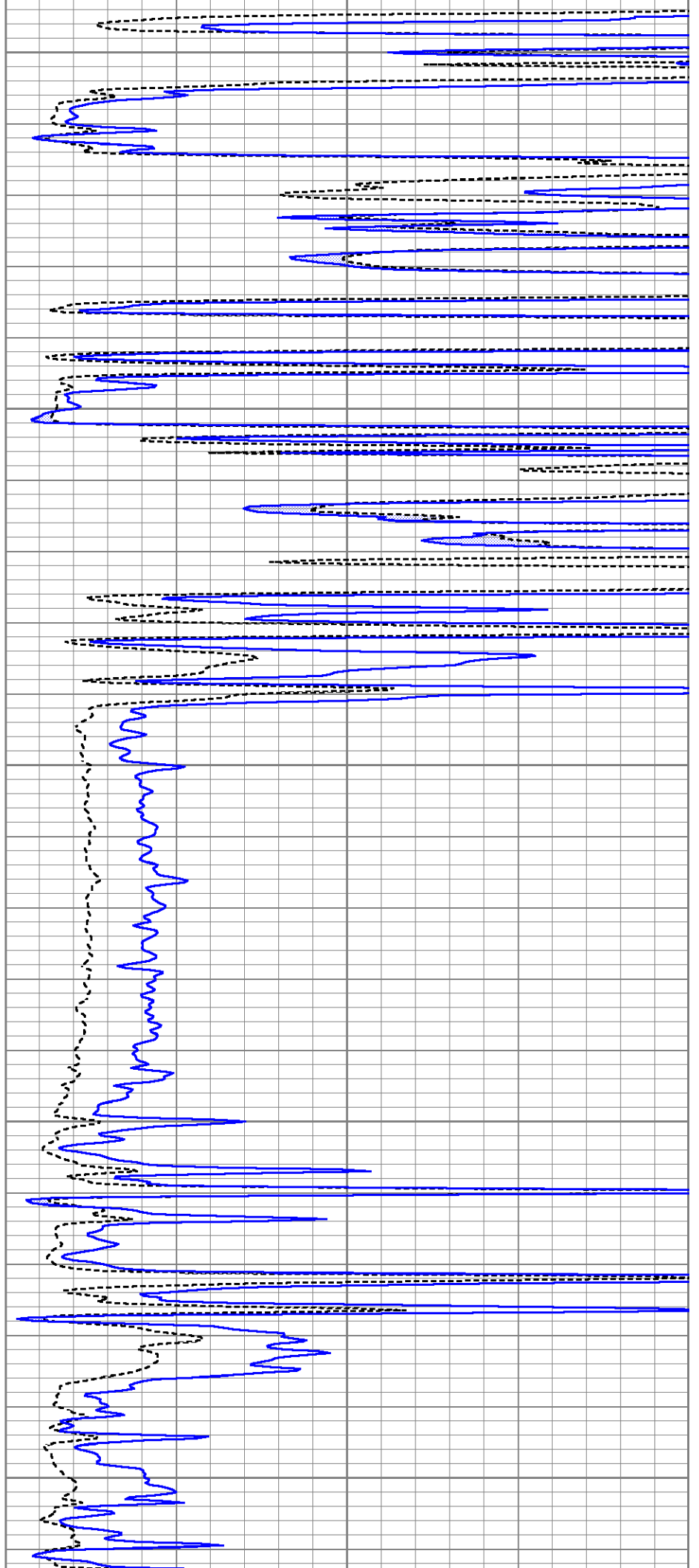
2800

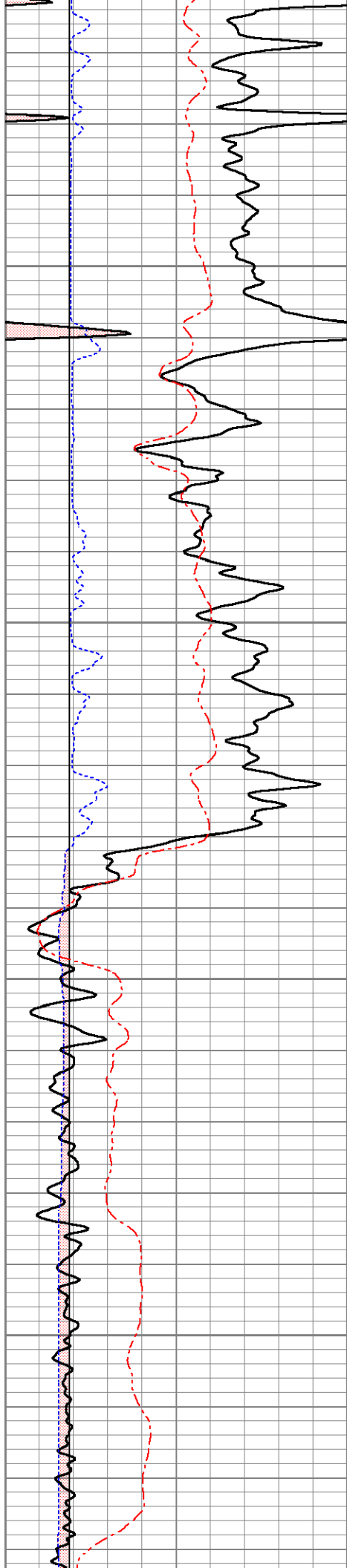
2850

2900

2950

3000



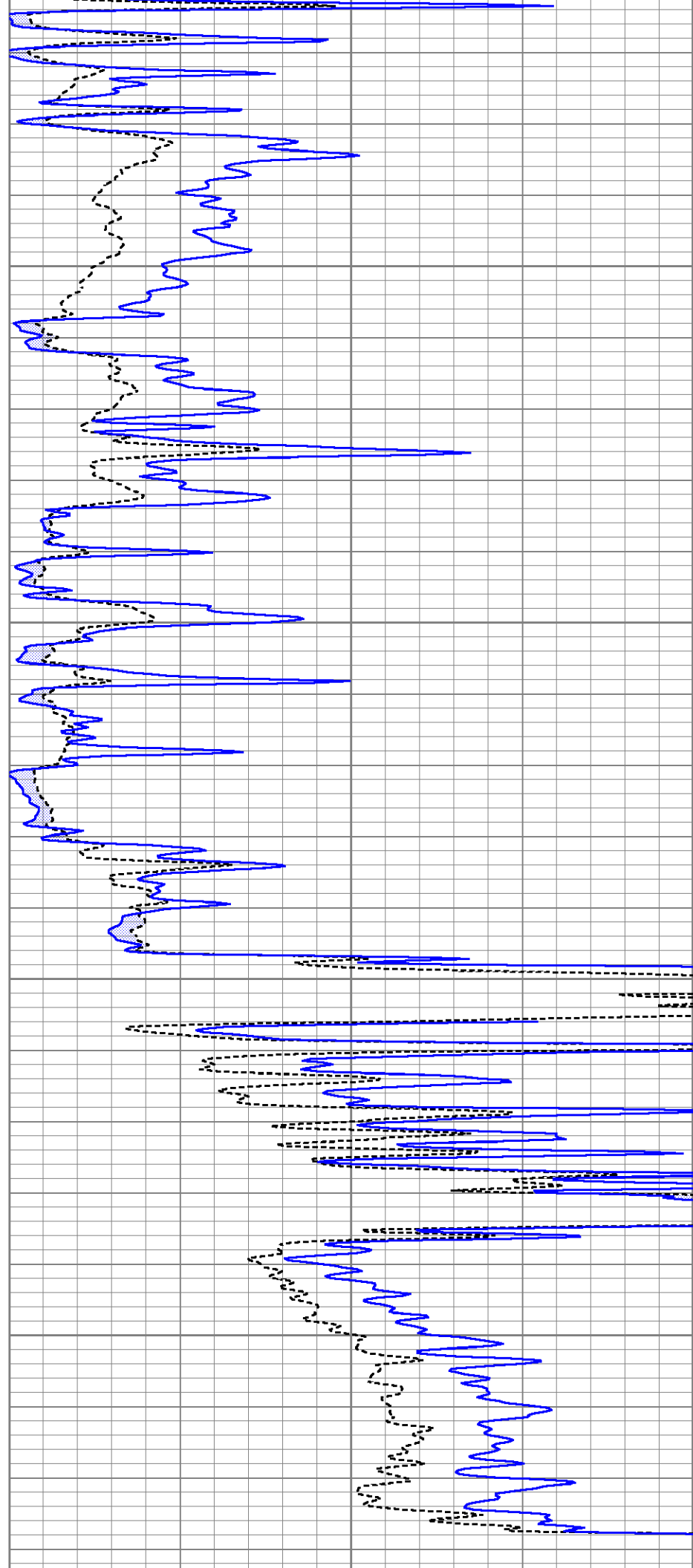


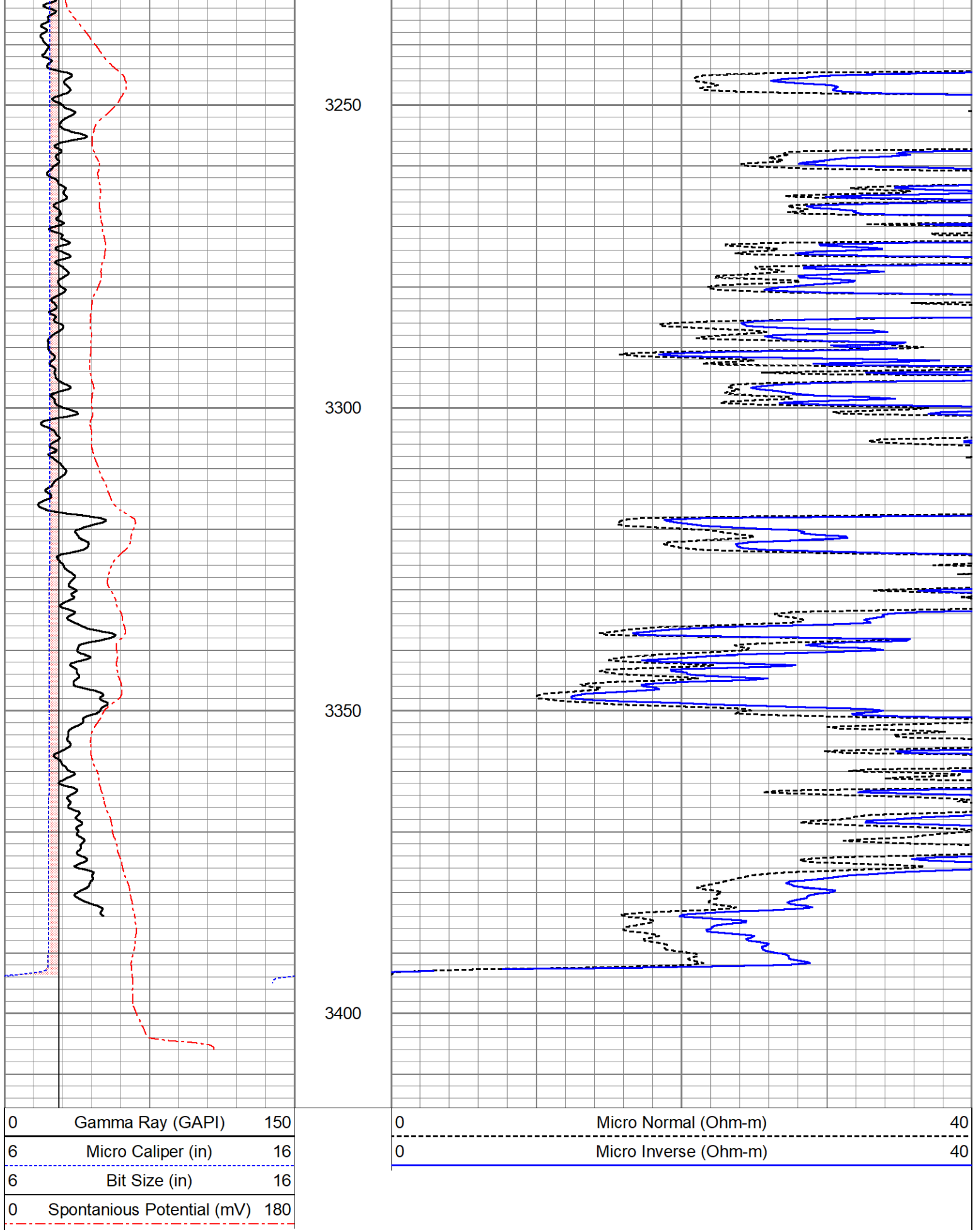
3050

3100

3150

3200





Calibration Report

Database File ow2-9072 val energy.db
 Dataset Pathname pass2.11

Dual Induction Calibration Report

Serial-Model: 5375-G
 Surface Cal Performed: Mon May 30 14:52:28 2022
 Downhole Cal Performed: Tue Nov 17 10:50:14 2020
 After Survey Verification Performed: Tue Nov 17 10:50:14 2020

Surface Calibration

Loop:	Readings			References			Results	
	Air	Loop		Air	Loop		m	b
Deep	0.007	0.642	V	1.000	400.000	mmho/m	628.476	-3.350
Medium	0.010	0.728	V	-2.000	500.000	mmho/m	698.447	-8.765
Internal:	Zero	Cal		Zero	Cal		m	b
Deep	0.007	0.642	V	0.000	350.000	mmho/m	550.717	-3.768
Medium	0.010	0.729	V	0.000	550.000	mmho/m	764.510	-7.354

Downhole Calibration

	Readings			References			Results	
	Zero	Cal		Zero	Cal		m'	b'
Deep	-2.869	354.028	mmho/m	-0.044	350.323	mmho/m	0.982	2.773
Medium	-3.741	414.629	mmho/m	-0.037	400.340	mmho/m	0.957	3.543
LL3		9.500	V		2000.000	Ohm-m		
		0.000	V		20.000	Ohm-m		
		-9.500	V		5000.000	mmho-m		

After Survey Verification

	Readings			Targets			Results	
	Zero	Cal		Zero	Cal		m'	b'
Deep	0.000	0.000	mmho/m	-2.869	354.028	mmho/m	1.000	0.000
Medium	0.000	0.000	mmho/m	-3.741	414.629	mmho/m	1.000	0.000
LL3		0.000	Ohm-m		2.000	Ohm-m		
		0.000	Ohm-m		500.000	Ohm-m		
		0.000	mmho-m		1.000	mmho-m		

Microlog Calibration Report

Serial-Model: 01-Osage
 Performed: Sat Mar 12 10:36:52 2022

	Readings			References			Results	
	Zero	Cal		Zero	Cal		m	b
Normal	0.0000	0.1000	V	0.0000	10.0000	Ohm-m	100.0000	0.0000
Inverse	0.0000	0.1000	V	0.0000	10.0000	Ohm-m	100.0000	-1.5000
Caliper	0.3482	9.1366	V	5.8000	20.5000	in	1.6727	5.2176

Inclinometer Calibration Report

Performed: Thu Oct 8 13:57:38 2020

	Low Read.	High Read.	Low Ref.	High Ref.	
X Accelerometer	205.00	1843.00	-1.00	1.00	gee
Y Accelerometer	205.00	1843.00	-1.00	1.00	gee

Gamma Ray Calibration Report

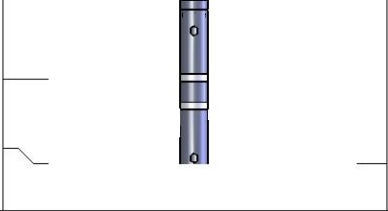
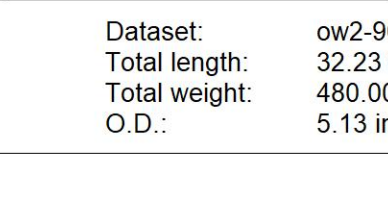
Serial Number: Refurb01
 Tool Model: OSAGE_01
 Performed: Mon Jan 18 09:02:16 2021

Calibrator Value: 150.0 GAPI

Background Reading: 125.0 cps
 Calibrator Reading: 875.0 cps

Sensitivity: 0.2000 GAPI/cps

Sensor	Offset (ft)	Schematic	Description	Length (ft)	O.D. (in)	Weight (lb)
ACCY ACCX GR	31.04 31.04 29.86		ADMYR_TELEMETRY-OSAGE_01 (Refurb01) Admyr Telemetry With Gr, Deviation, ADC board and Pulses Board in it.	3.69	3.25	53.00
FRAMES SSTAT PSTAT ASTAT	28.54 28.54 28.54 28.54					
MI MN MCAL ASTAT2	23.00 23.00 22.00 21.33					
			MICRO_DIG-Osage (01) Digital Microlog	7.21	5.13	137.00
SP CILD	10.92 10.92		DIL-G (5375) Gearhart	21.33	4.00	290.00
CILM	7.00					

RLL3	1.65				
TR_Mon	0.00				

Dataset: ow2-9072 val energy.db: field/well/run1/pass2.11
 Total length: 32.23 ft
 Total weight: 480.00 lb
 O.D.: 5.13 in