



**MIDWEST SURVEYS**  
 LOGGING - PERFORATING - CONSULTING SERVICES  
 P.O. Box 68, Osawatomie, KS 68064  
 913.735.2128

**GAMMA RAY / NEUTRON / CCL**

File No.

Company Kansas Resources Exploration

Well Knabe D No. KMI-2

Field Gardner

County Johnson State Kansas

Location 3075' F.S.L. & 3730' FEL  
NW-SW-SE-NW

Other Services Perforate

Sec. 14 Twp. 14S Rge. 22E Elevation 1023'

Permanent Datum Log Measured From Drilling Measured From

Date 02-25-2026

Run Number One

Depth Driller 874.8

Bottom Logged Interval 873.8

Top Log Interval 20.0

Fluid Level Full

Type Fluid Water

Density / Viscosity NA NA

Salinity - PPM Cl NA NA

Max Recorded Temp NA NA

Estimated Cement Top 0.0

Equipment No. Location 104 Osawatomie

Recorded By Steve Windisch

Measured By Brad Kramer

BORE-HOLE RECORD

CASING RECORD

TO FROM TO FROM TO

No. BIT 9.875" 20.0 7.00" 15.0 9.875" 20.0

Size 5.625" 20.0 900.0 2.875" 6.5 0.0 888.0

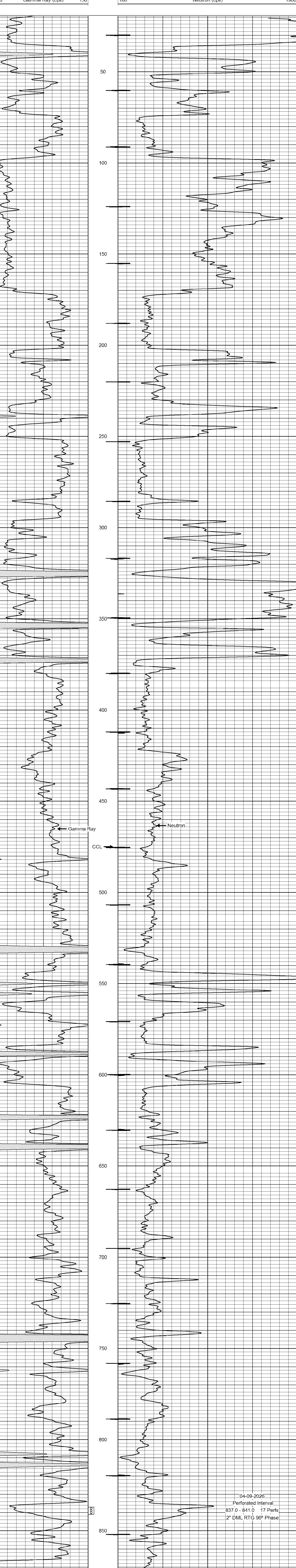
<<< Fold Here >>>

All interpretations are opinions based on inferences from electrical or other measurements and we cannot and do not guarantee the accuracy or correctness of any interpretation, and we shall not, except in the case of gross or willful negligence on our part, be liable or responsible for any loss, costs, damages, or expenses incurred or sustained by anyone resulting from any interpretation made by any of our officers, agents or employees. These interpretations are also subject to our general terms and conditions set out in our current Price Schedule.

Comments

Drilling Contractor :  
TDR Construction, Inc.

Database File: knabe d 2 kmi.db  
 Dataset Pathname: pass1  
 Presentation Format: gr-n-ccl  
 Dataset Creation: Wed Feb 25 10:20:03 2026 by Log SCH 111116  
 Charted by: Depth in Feet scaled 1:240



04-09-2026  
 Perforated Interval  
 837.0 - 841.0 17 Perfs  
 2" DML RTG 90° Phase