

**MICRO
LOG**



Company HERMAN L. LOEB, LLC.
Well #1-16 CLAYTON - ZIMMERMAN
Field FRALICK WEST
County KIOWA
State KANSAS

Company HERMAN L. LOEB, LLC.
Well #1-16 CLAYTON - ZIMMERMAN
Field FRALICK WEST
County KIOWA State KANSAS

Location: API #: 15-097-21872-0000
1091' FSL & 2480' FEL
SEC 16 TWP 28S RGE 20W
Permanent Datum GROUND LEVEL Elevation 2320
Log Measured From KELLY BUSHING 11' A.G.L
Drilling Measured From KELLY BUSHING
Other Services CDL/CNL/PE DIL
Elevation K.B. 2331 D.F. 2329 G.L. 2320

Date	2/9/24	
Run Number	TWO	
Depth Driller	5025	
Depth Logger	5026	
Bottom Logged Interval	5024	
Top Log Interval	4000	
Casing Driller	8.675@519	
Casing Logger	519	
Bit Size	7.785	
Type Fluid in Hole	CHEMICAL MUD	CHLORIDES 8,000 PPM
Density / Viscosity	9.0/56	
pH / Fluid Loss	10.5/9.2	
Source of Sample	FLOWLINE	
Rm @ Meas. Temp	.540@74F	
Rmf @ Meas. Temp	.405@74F	
Rmc @ Meas. Temp	.648@74F	
Source of Rmf / Rmc	MEASUREMENT	
Rm @ BHT	.317@126F	
Time Circulation Stopped	4 HOURS	
Time Logger on Bottom	10:00 P.M.	
Maximum Recorded Temperature	126F	
Equipment Number	922339	
Location	HAYS, KANSAS	
Recorded By	JEFF LUEBBERS	JEREMY PASEK
Witnessed By	JON CHRISTENSEN	

<<< Fold Here >>>

All interpretations are opinions based on inferences from electrical or other measurements and we cannot and do not guarantee the accuracy or correctness of any interpretation, and we shall not, except in the case of gross or willful negligence on our part, be liable or responsible for any loss, costs, damages, or expenses incurred or sustained by anyone resulting from any interpretation made by any of our officers, agents or employees. These interpretations are also subject to our general terms and conditions set out in our current Price Schedule.

15-097-21872-0000 Comments

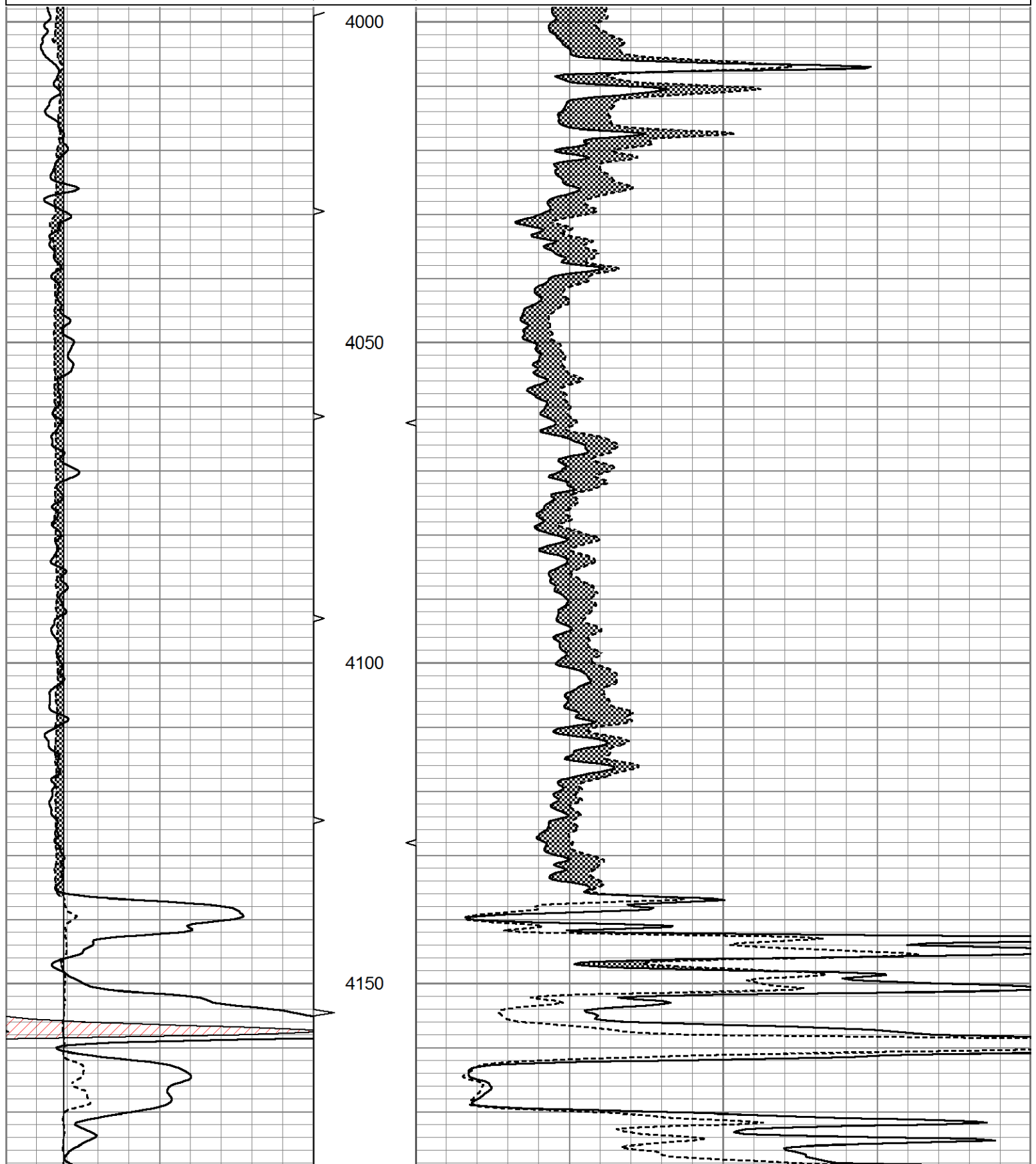
THANK YOU FOR USING ELI WIRELINE HAYS. KANSAS (785) 628-6395
DIRECTIONS
MULLINVILLE, KS., (HWY 400 & MAIN ST.) 1 1/2 N. TO "15 ST.", 1 1/2W., S. INTO

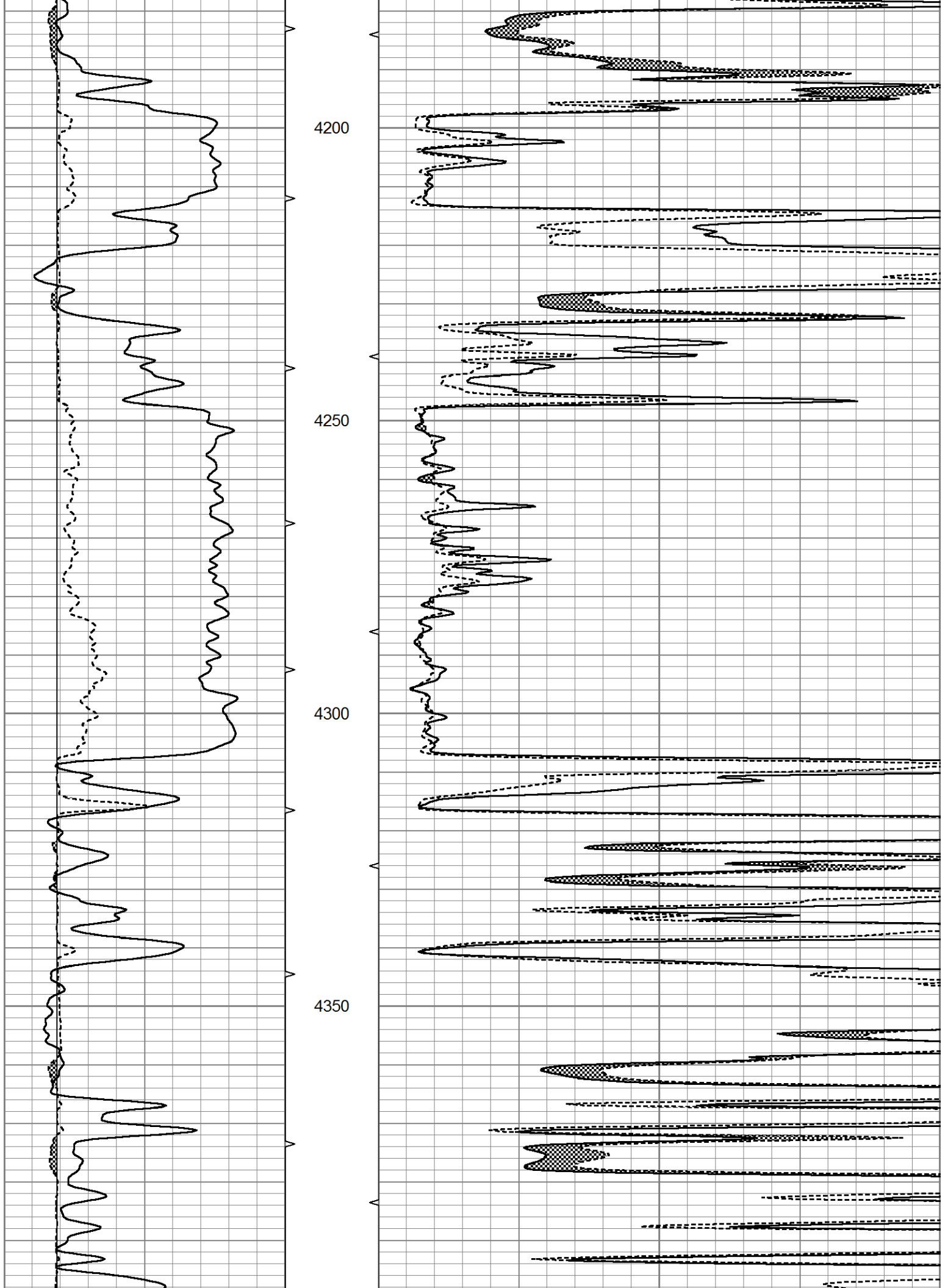


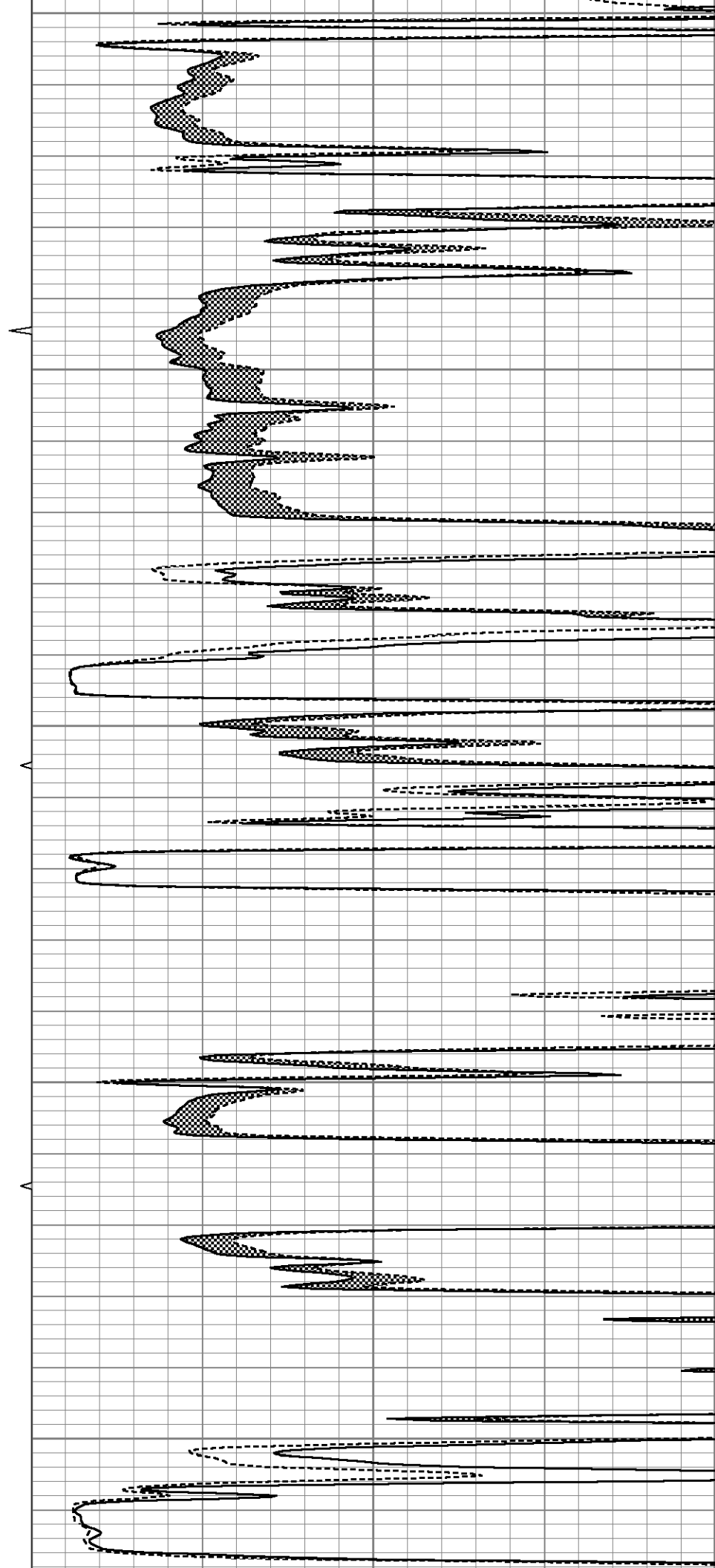
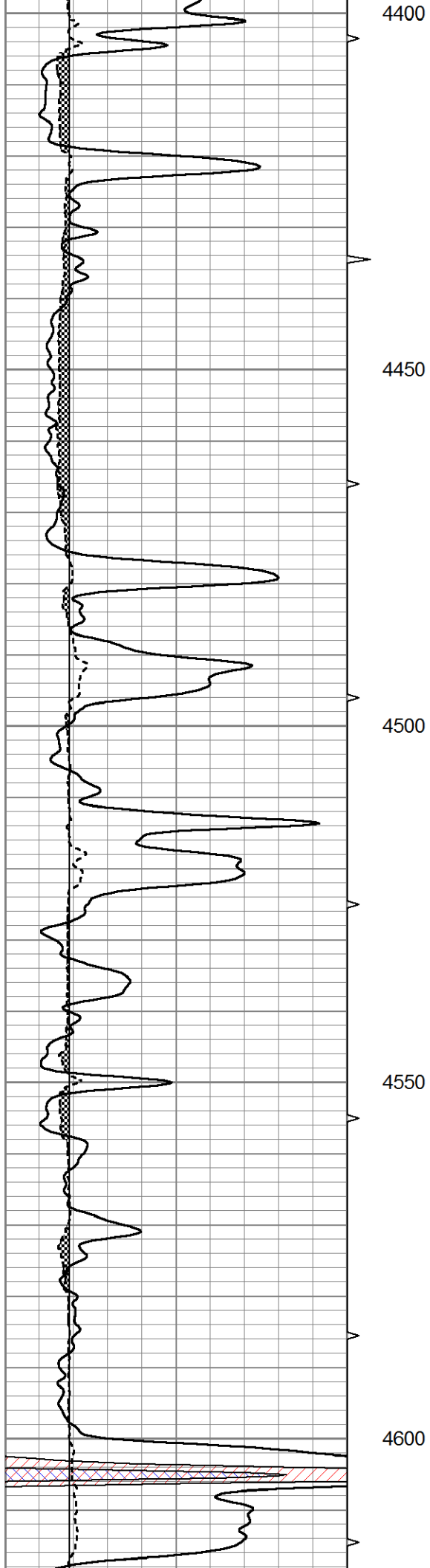
MAIN SECTION

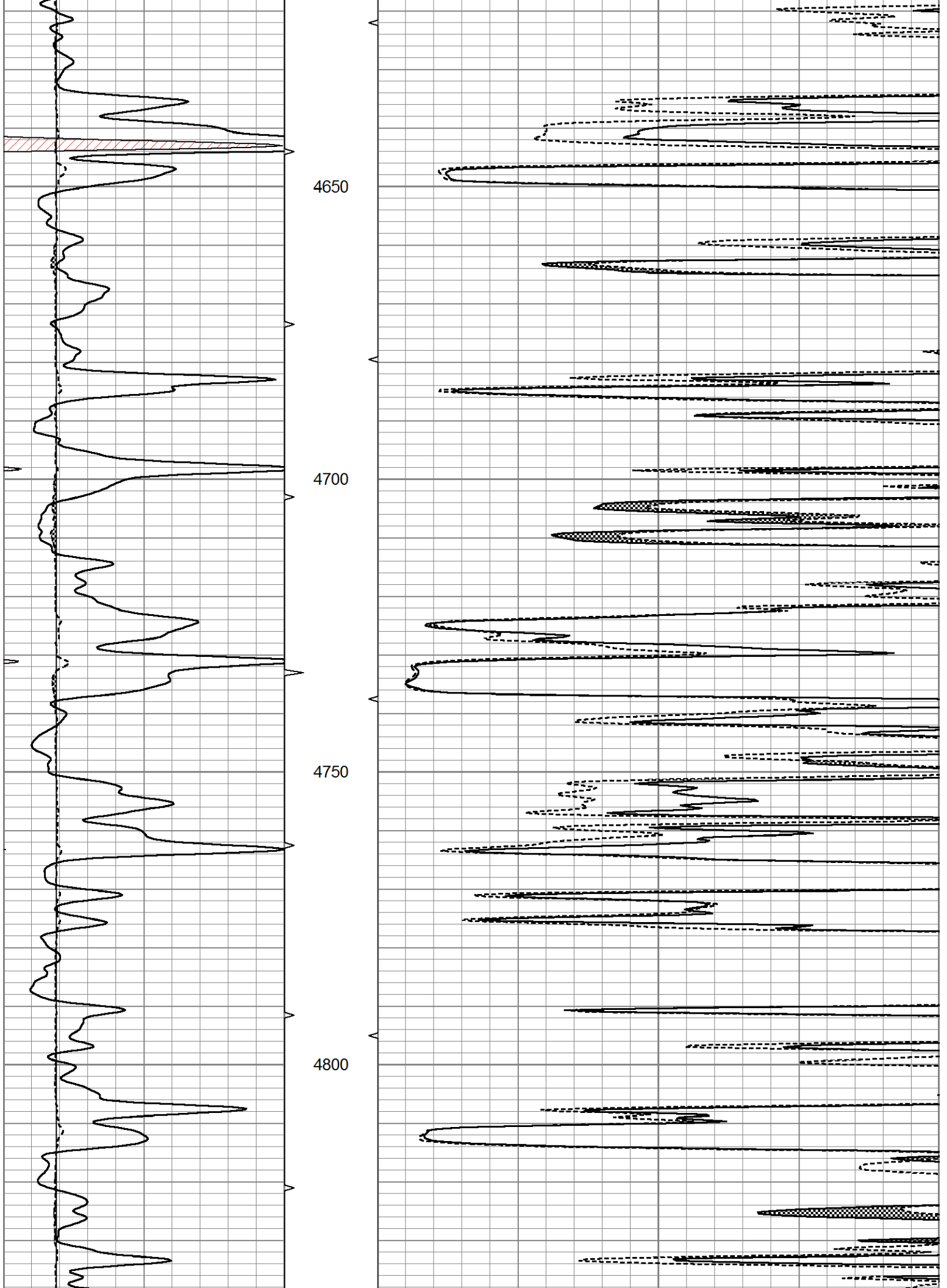
Database File 8409pe.db
 Dataset Pathname pass6.1
 Presentation Format micro
 Dataset Creation Fri Feb 09 22:49:27 2024
 Charted by Depth in Feet scaled 1:240

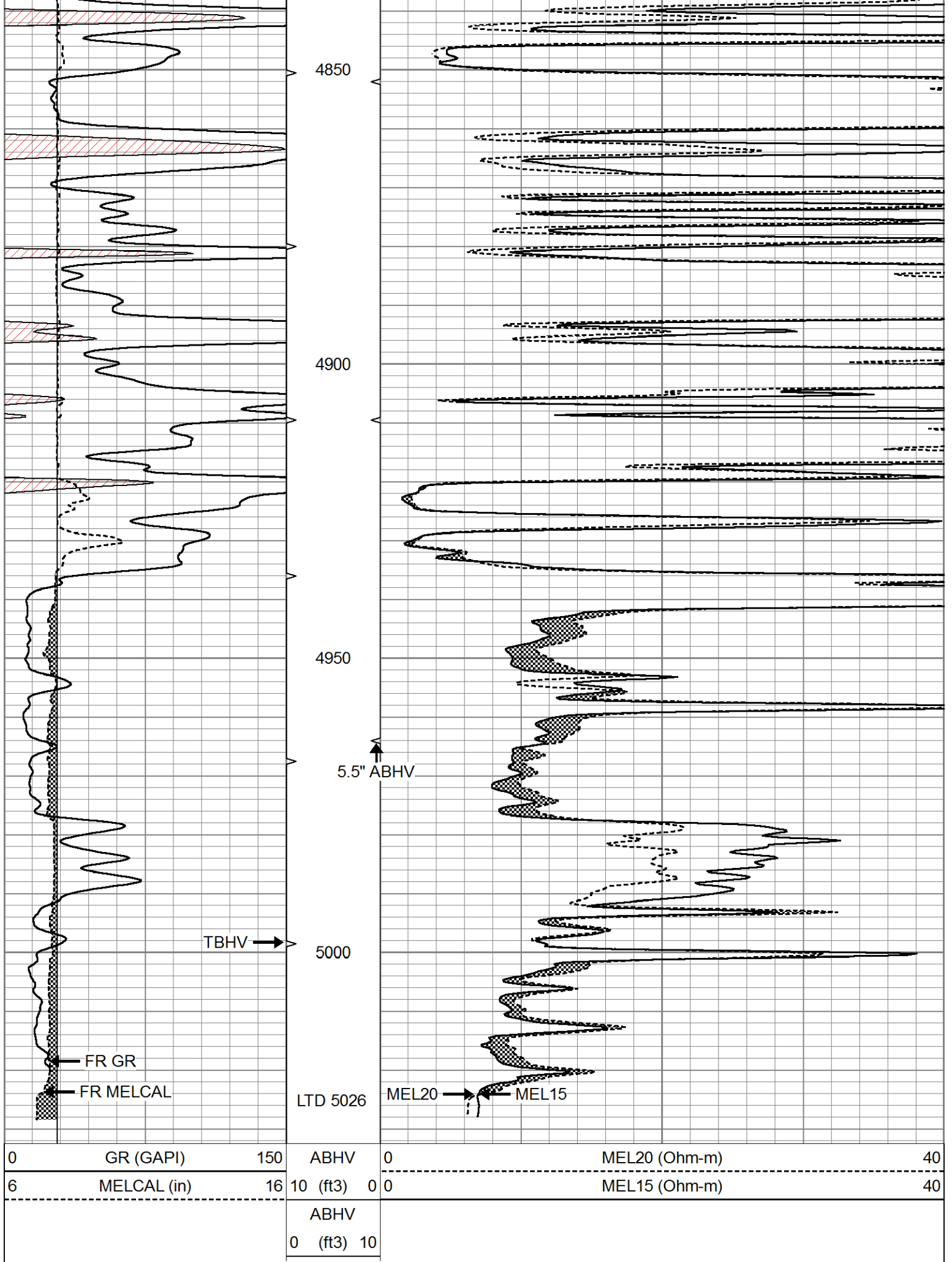
0	GR (GAPI)	150	ABHV	0	MEL20 (Ohm-m)	40
6	MELCAL (in)	16	10 (ft3)	0	MEL15 (Ohm-m)	40
			ABHV			
			0 (ft3)	10		









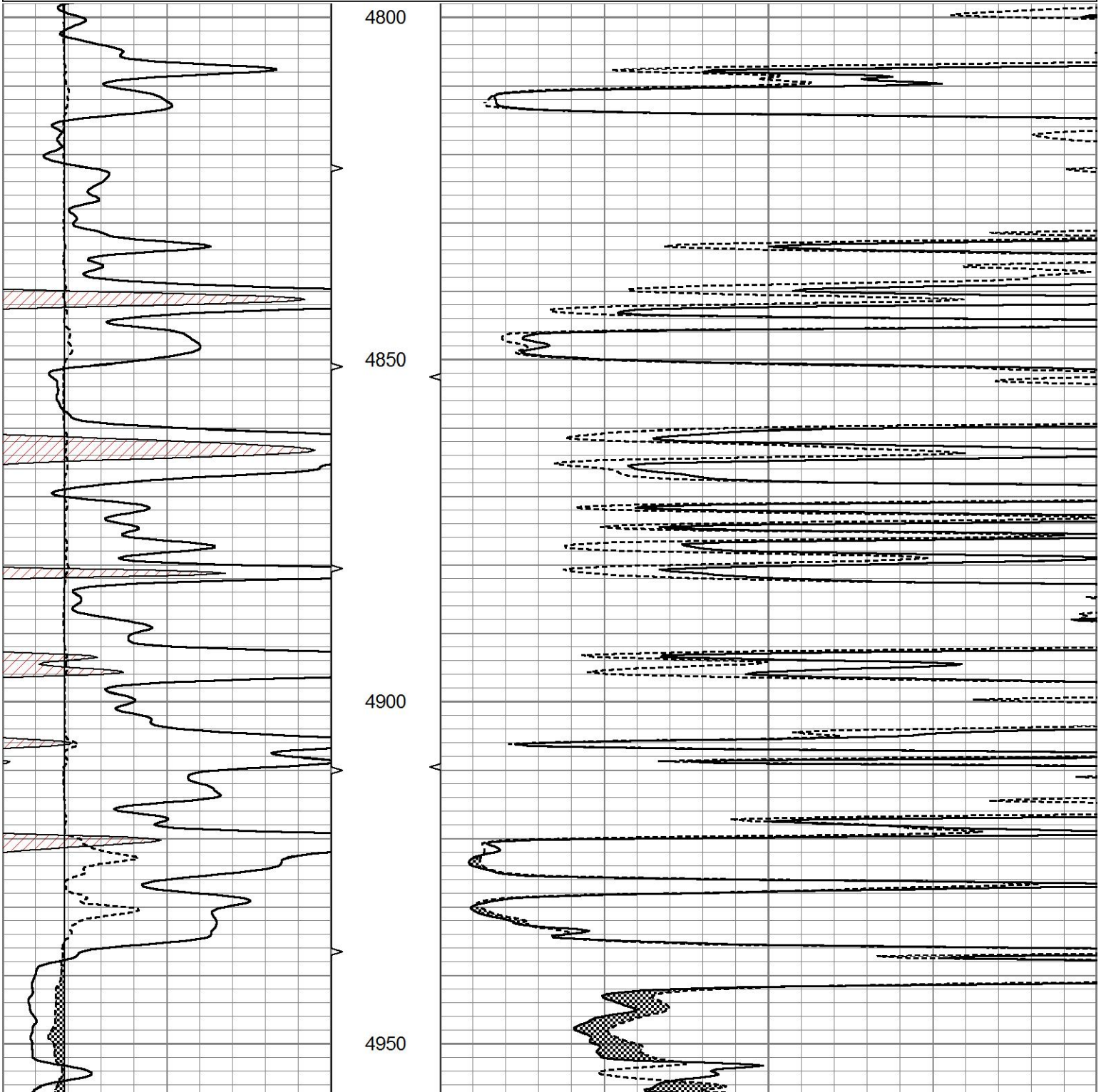




REPEAT SECTION

Database File 8409pe.db
 Dataset Pathname pass5.1
 Presentation Format micro
 Dataset Creation Fri Feb 09 22:22:21 2024
 Charted by Depth in Feet scaled 1:240

0	GR (GAPI)	150	ABHV	0	MEL20 (Ohm-m)	40
6	MELCAL (in)	16	10 (ft3)	0	MEL15 (Ohm-m)	40
			ABHV			
			0 (ft3)	10		



Background Reading:	0.0	cps
Calibrator Reading:	1.0	cps
Sensitivity:	0.3000	GAPI/cps