



**MIDWEST SURVEYS**  
 LOGGING - PERFORATING - CONSULTING SERVICES  
 P.O. Box 68, Osawatomie, KS 68064  
 913 / 755 - 2128

**GAMMA RAY / NEUTRON / CCL**

File No. \_\_\_\_\_

Company **Colt Energy, Inc.**

Well **Hobbs No. - 72**

Field **Iola**

County **Allen**

State **Kansas**

Location **734' FNL & 1219' FWL**

NE-SE-NW-NW

Other Services

Perforate

Sec. 9

Permament Datum

Log Measured From

Drilling Measured From

Date

Run Number

Depth Driller

Bottom Logged Interval

Top Log Interval

Fluid Level

Type Fluid

Density / Viscosity

Salinity - PPM Cl

Max. Recorded Temp

Estimated Cement Top

Equipment No.

Recorded By

Witnessed By

Location

Steve Windisch

Wes Moors

Sec. 9	Typ. 24s	Rge. 18e	Elevation	Other Services
Permament Datum	GL	GL	1029'	Perforate
Log Measured From	GL	GL	K.E. NA	
Drilling Measured From	GL	GL	D.F. NA	
Date	04-01-2024		G.L. 1029'	

Run Number	One
Depth Driller	1045.0
Bottom Logged Interval	1028.7
Top Log Interval	1027.7
Fluid Level	Full

Type Fluid	Water
Density / Viscosity	NA
Salinity - PPM Cl	NA
Max. Recorded Temp	NA
Estimated Cement Top	0.0
Equipment No.	107
Recorded By	Steve Windisch
Witnessed By	Wes Moors

BORE-HOLE RECORD				CASING RECORD			
Run	BIT	FROM	TO	SIZE	WT	FROM	TO
One	12.25"	0.0	20.0	8.625"	28.0	0.0	20.0
Two	6.75"	20.0	1045.0	4.50"	10.5	10.5	1033.1
				Baffle	Set	At	1029.1

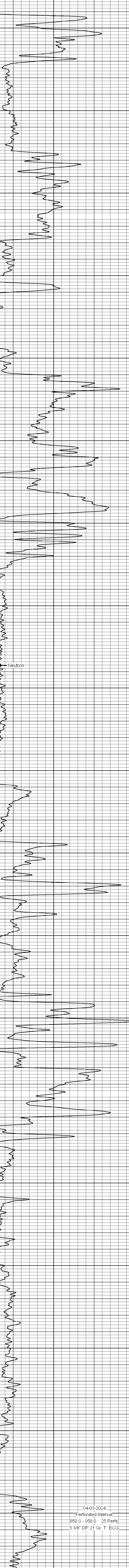
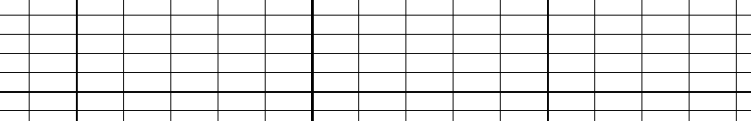
<<< Fold Here >>>

All interpretations are opinions based on inferences from electrical or other measurements and we cannot and do not guarantee the accuracy or correctness of any interpretation, and we shall not, except in the case of gross or willful negligence on our part, be liable or responsible for any loss, costs, damages, or expenses incurred or sustained by anyone resulting from any interpretation made by any of our officers, agents or employees. These interpretations are also subject to our general terms and conditions set out in our current Price Schedule.

Comments

Drilling Contractor :  
Colt Energy, Inc.

Database File: hobbs 72.db  
 Dataset Pathname: pass1  
 Presentation Format: gr-n-ccl  
 Dataset Creation: Mon Apr 01 13:07:29 2024 by Log SCH 111116  
 Charted by: Depth in Feet scaled 1:240



04-03-2024  
 Perforated Interval  
 950.0 - 958.0 25 Perfs  
 3 3/8" DP 21 Gr. T. ECG

