



MICRO LOG

Company UNION VALLEY PETROLEUM CORP.
 Well KING #1-36
 Field NORTH CALDWELL
 County SUMNER
 State KANSAS

Company UNION VALLEY PETROLEUM CORPORATION
 Well KING #1-36
 Field NORTH CALDWELL
 County SUMNER State KANSAS

Location: API #: 15-191-22863-0000
 1420' FNL & 870' FEL
 NE - NW - SE - NE
 SEC 36 TWP 33S RGE 4W
 Permanent Datum GROUND LEVEL Elevation 1221
 Log Measured From KELLY BUSHING 13' A.G.L.
 Drilling Measured From KELLY BUSHING

Other Services
 CDL/CNL/PE
 DIL/SONIC
 Elevation
 K.B. 1234
 D.F. 1232
 G.L. 1221

Date	3/25/24
Run Number	TWO
Depth Driller	4675
Depth Logger	4675
Bottom Logged Interval	4659
Top Log Interval	3000
Casing Driller	8.625@310
Casing Logger	310
Bit Size	7.785
Type Fluid in Hole	CHEMICAL MUD
Density / Viscosity	9.3/55
pH / Fluid Loss	10.0/10.0
Source of Sample	FLOWLINE
Rm @ Meas. Temp	.880@72F
Rmf @ Meas. Temp	.660@72F
Rmc @ Meas. Temp	1.06@72F
Source of Rmf / Rmc	MEASUREMENT
Rm @ BHT	.519@122F
Time Circulation Stopped	5 HOURS
Time Logger on Bottom	8:00 A.M.
Maximum Recorded Temperature	122F
Equipment Number	922339
Location	HAYS, KANSAS
Recorded By	JEFF LUEBBERS
Witnessed By	DUSTIN JOHNSON

<<< Fold Here >>>

All interpretations are opinions based on inferences from electrical or other measurements and we cannot and do not guarantee the accuracy or correctness of any interpretation, and we shall not, except in the case of gross or willful negligence on our part, be liable or responsible for any loss, costs, damages, or expenses incurred or sustained by anyone resulting from any interpretation made by any of our officers, agents or employees. These interpretations are also subject to our general terms and conditions set out in our current Price Schedule.

15-191-22863-0000 Comments

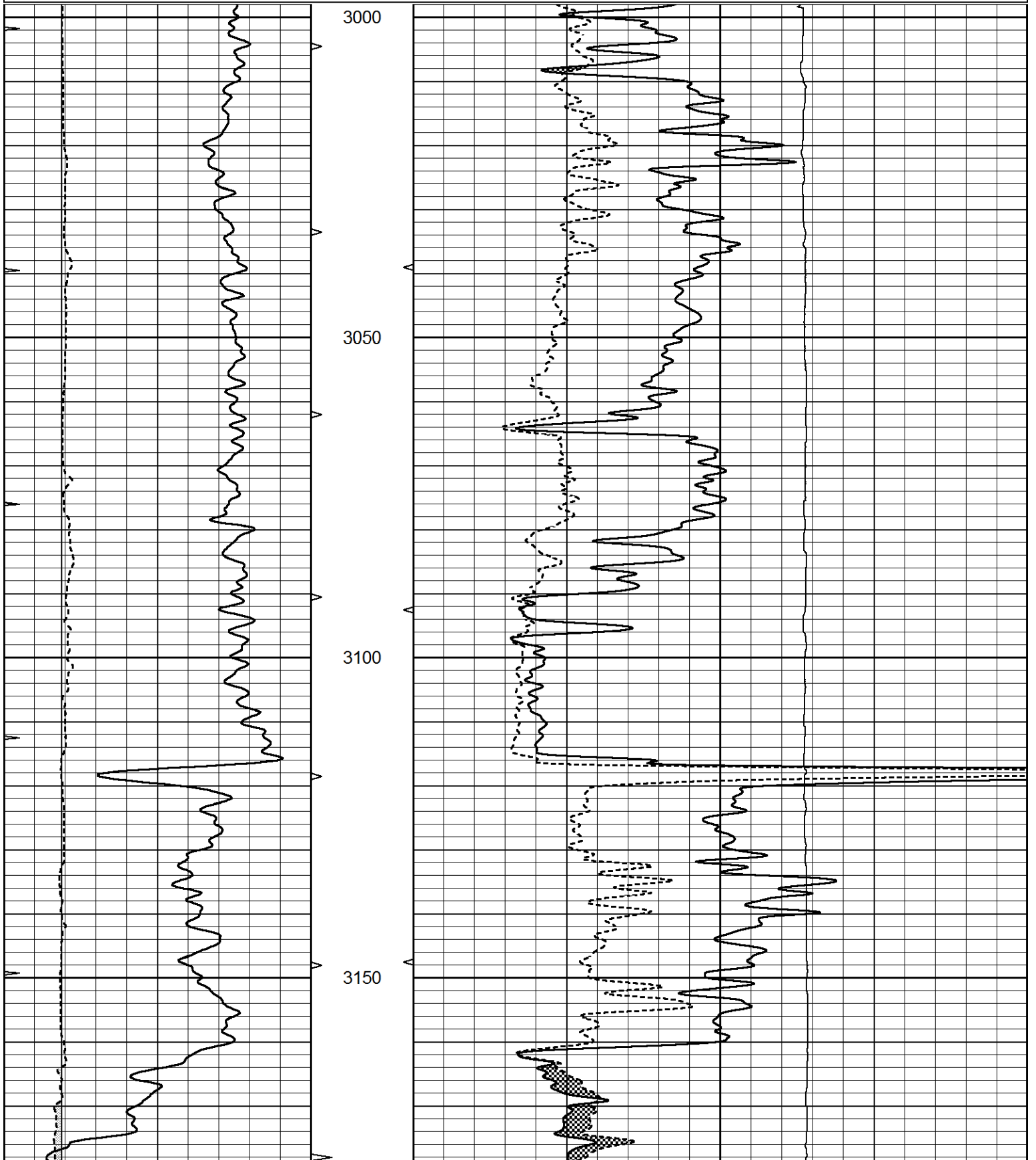
THANK YOU FOR USING ELI WIRELINE HAYS. KANSAS (785) 628-6395
 DIRECTIONS
 ANTHONY, KS., APPROX. 19E. ON HWY 44 TO "BLUFF RD." 1S., S.W. INTO

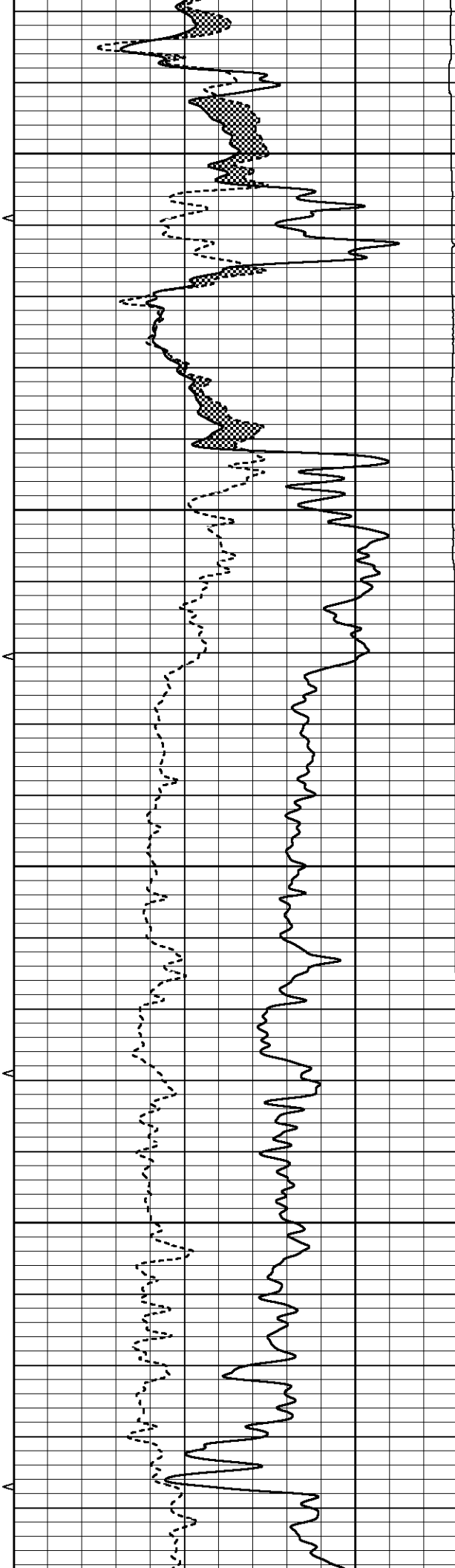
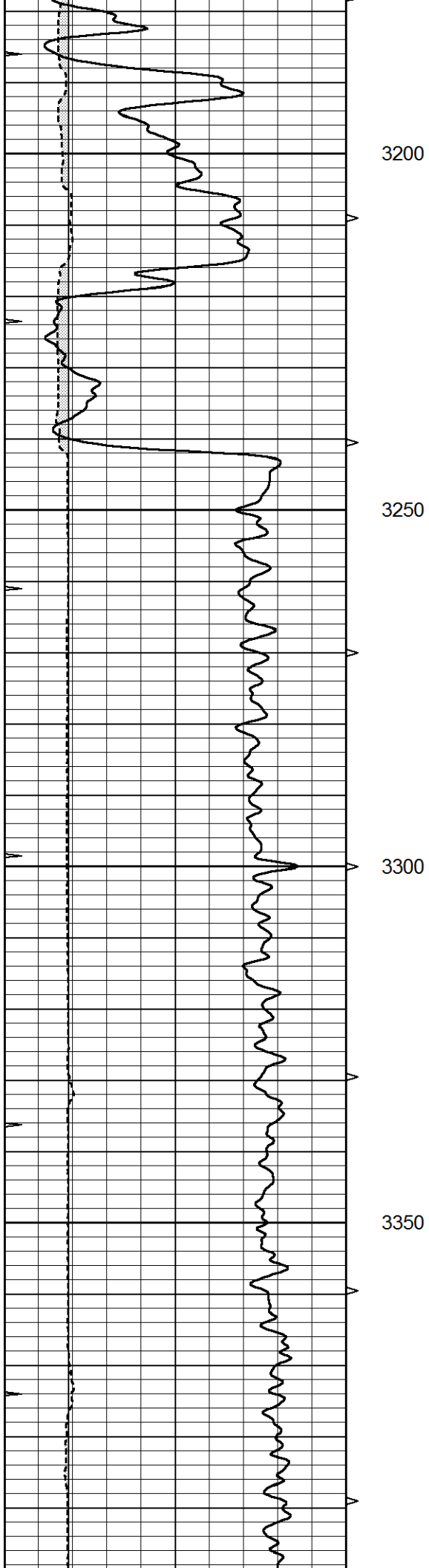


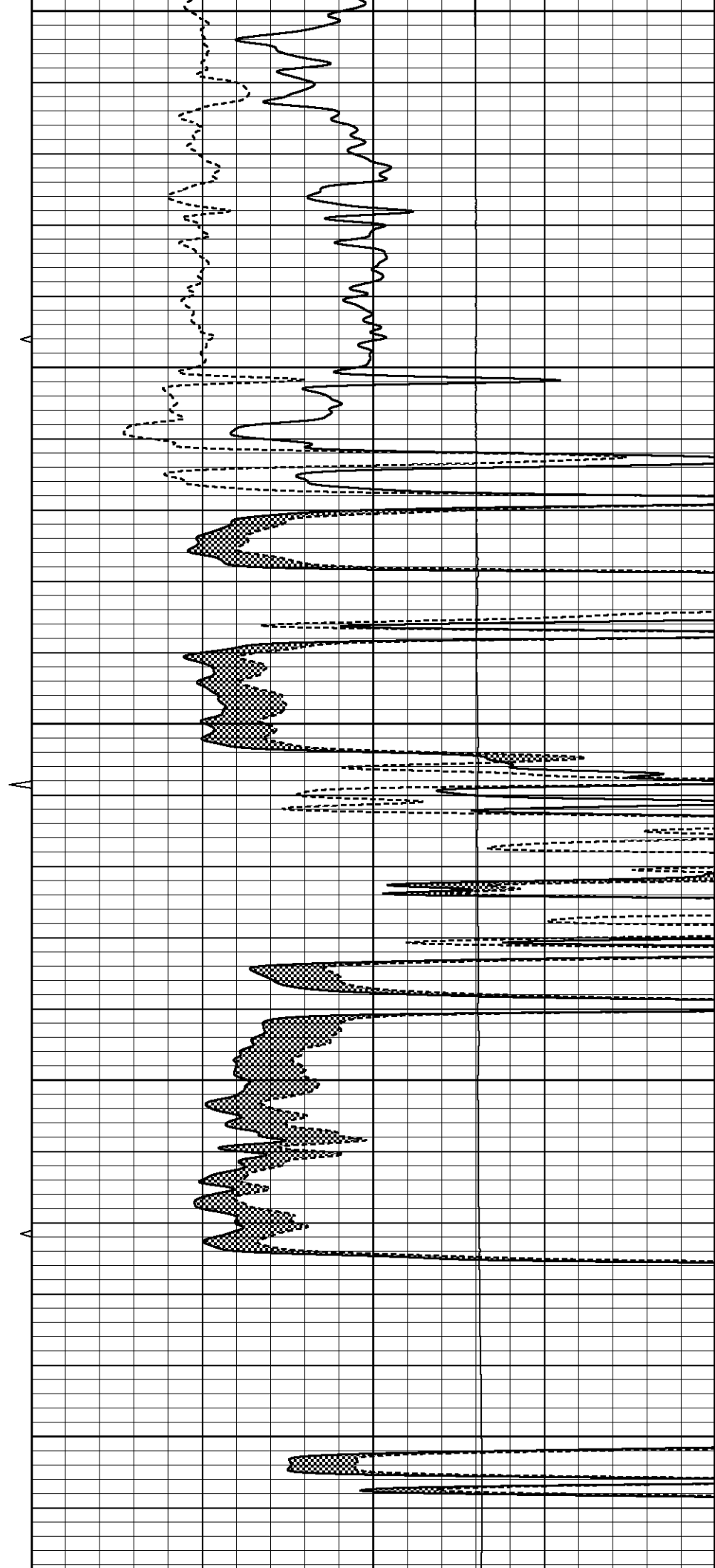
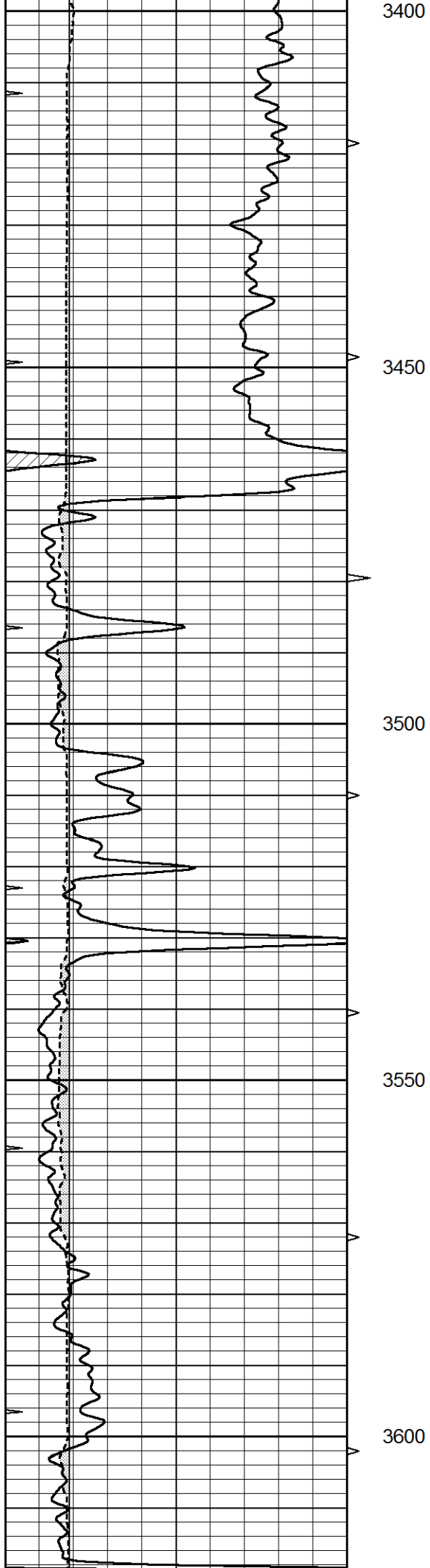
MAIN SECTION

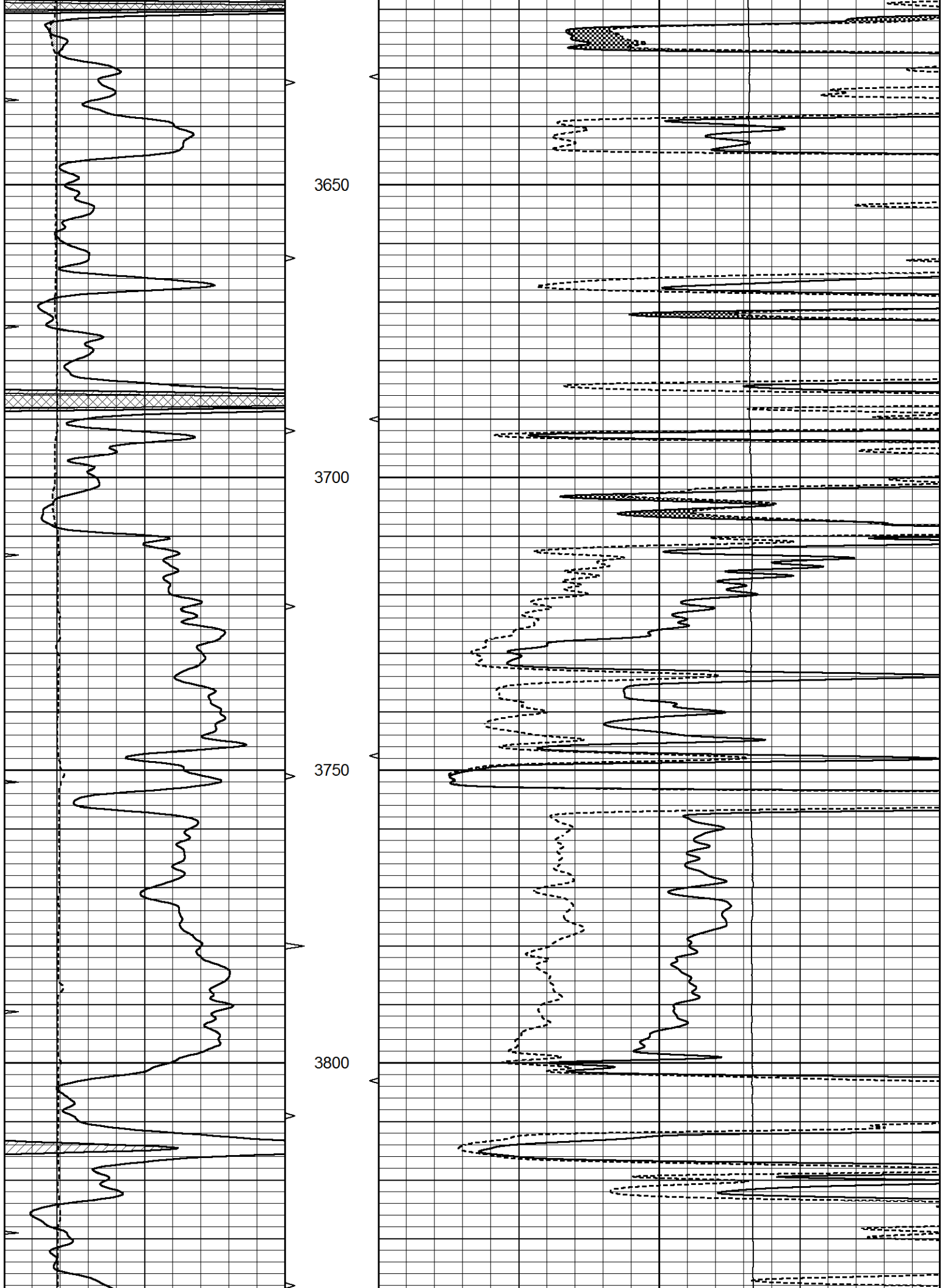
Database File 8425pe.db
 Dataset Pathname pass6.3
 Presentation Format _micro
 Dataset Creation Mon Mar 25 10:07:56 2024
 Charted by Depth in Feet scaled 1:240

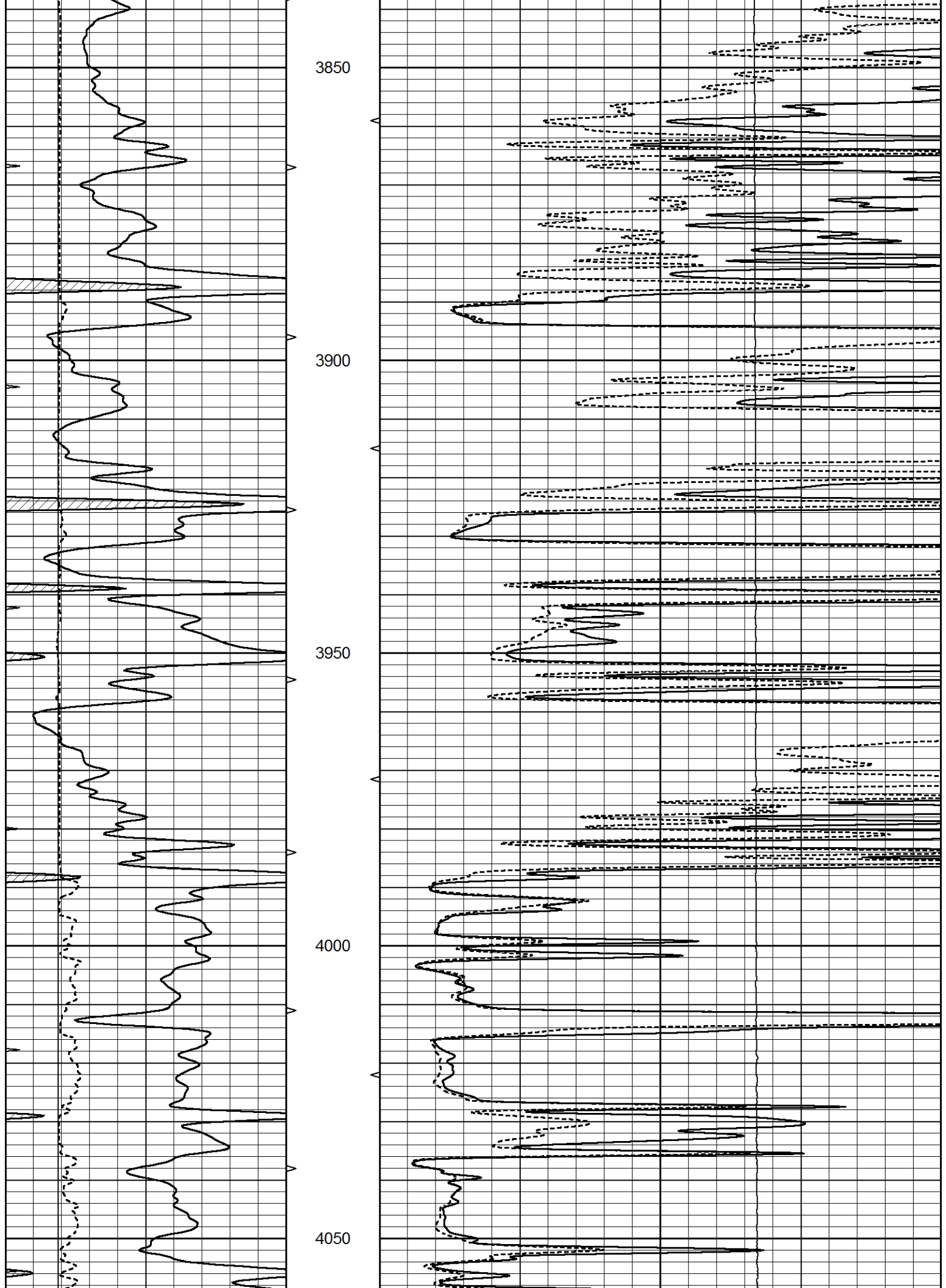
0	GAMMA RAY (GAPI)	150	ABHV	0	MEL1.5 (Ohm-m)	40
6	CALIPER (in)	16	10 (ft3)	0	MEL2.0 (Ohm-m)	40
0	MINMK	20	TBHV	0	LTEN (lb)	5000
			0 (ft3)	10		

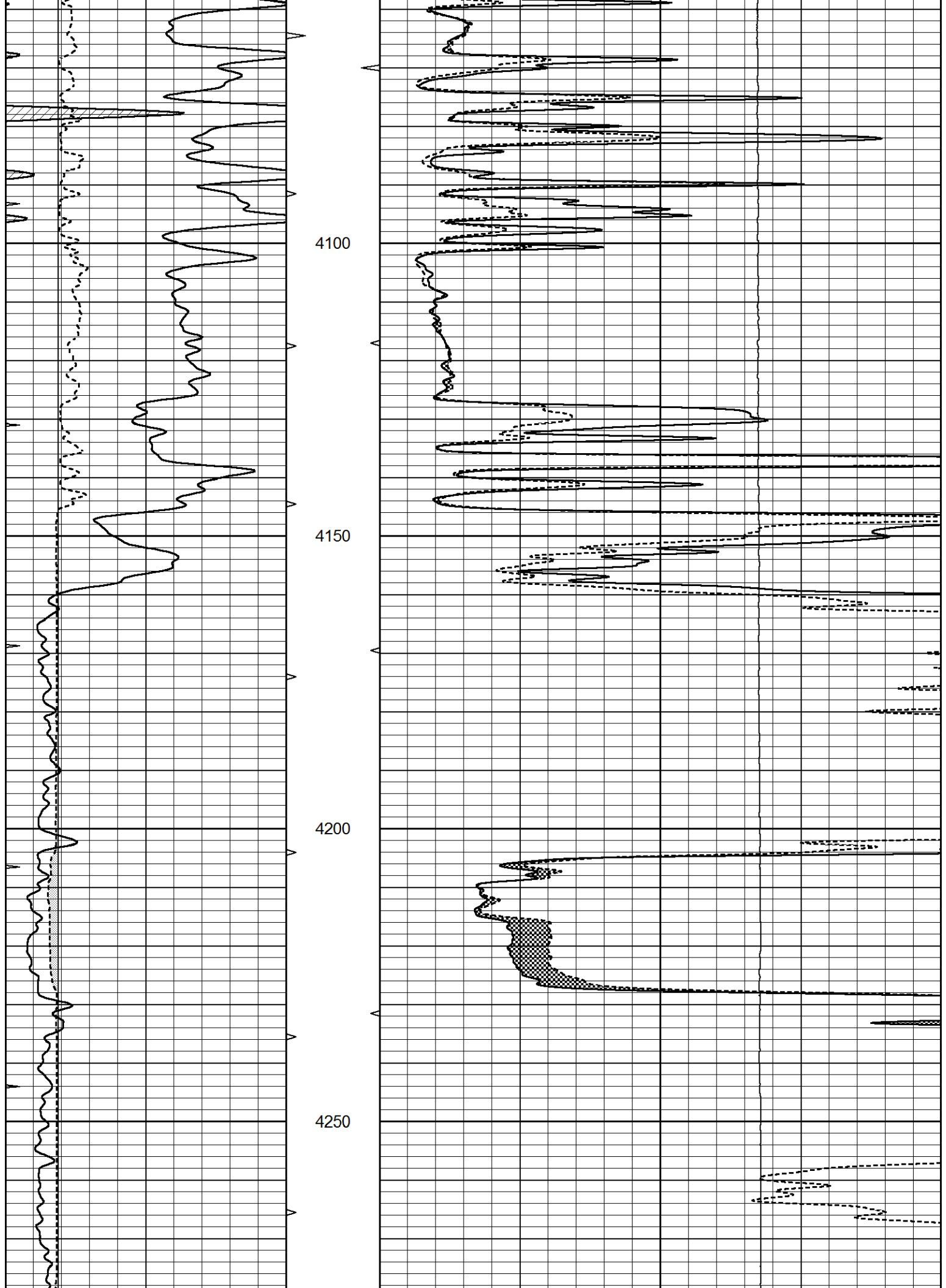


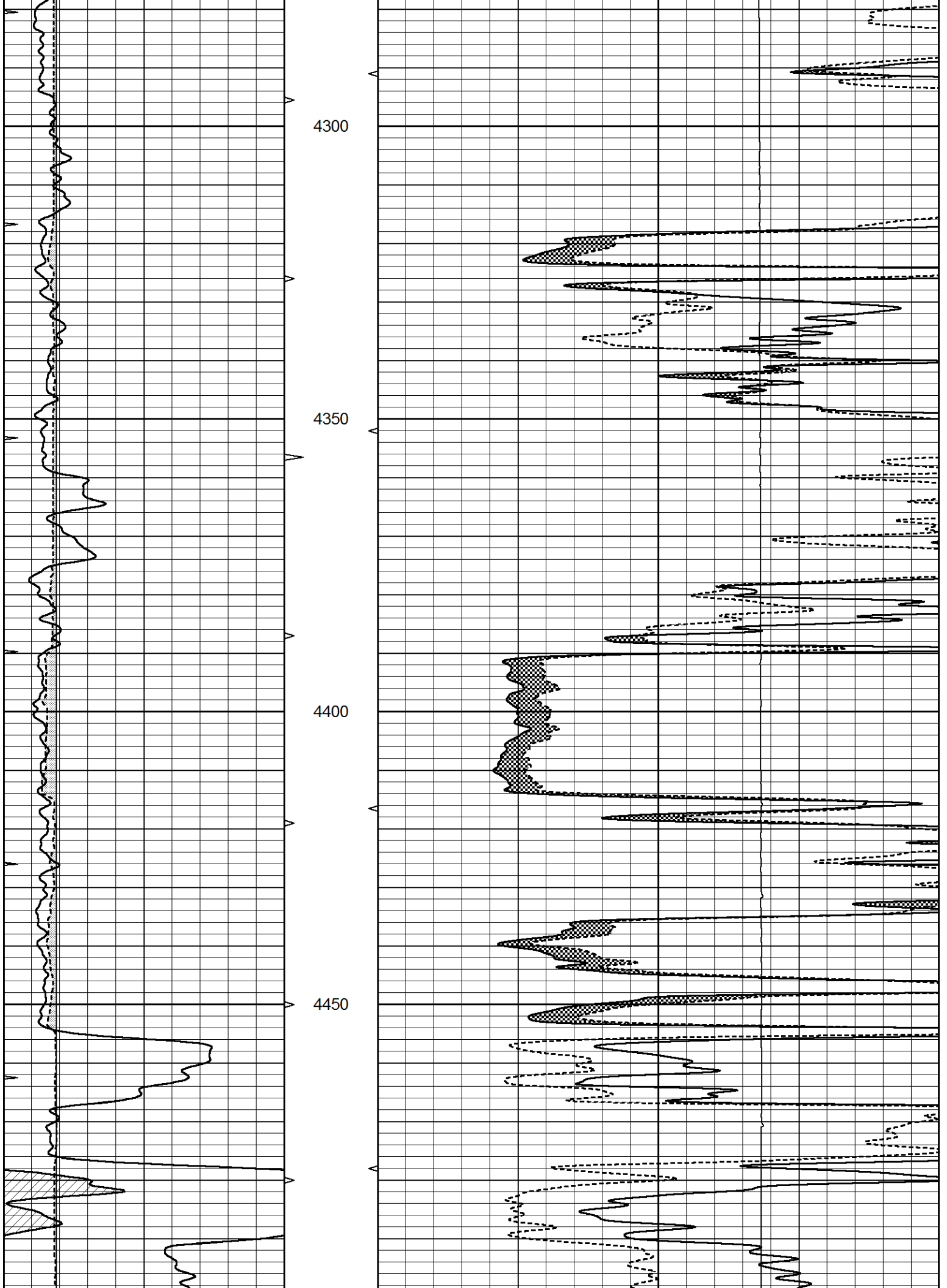


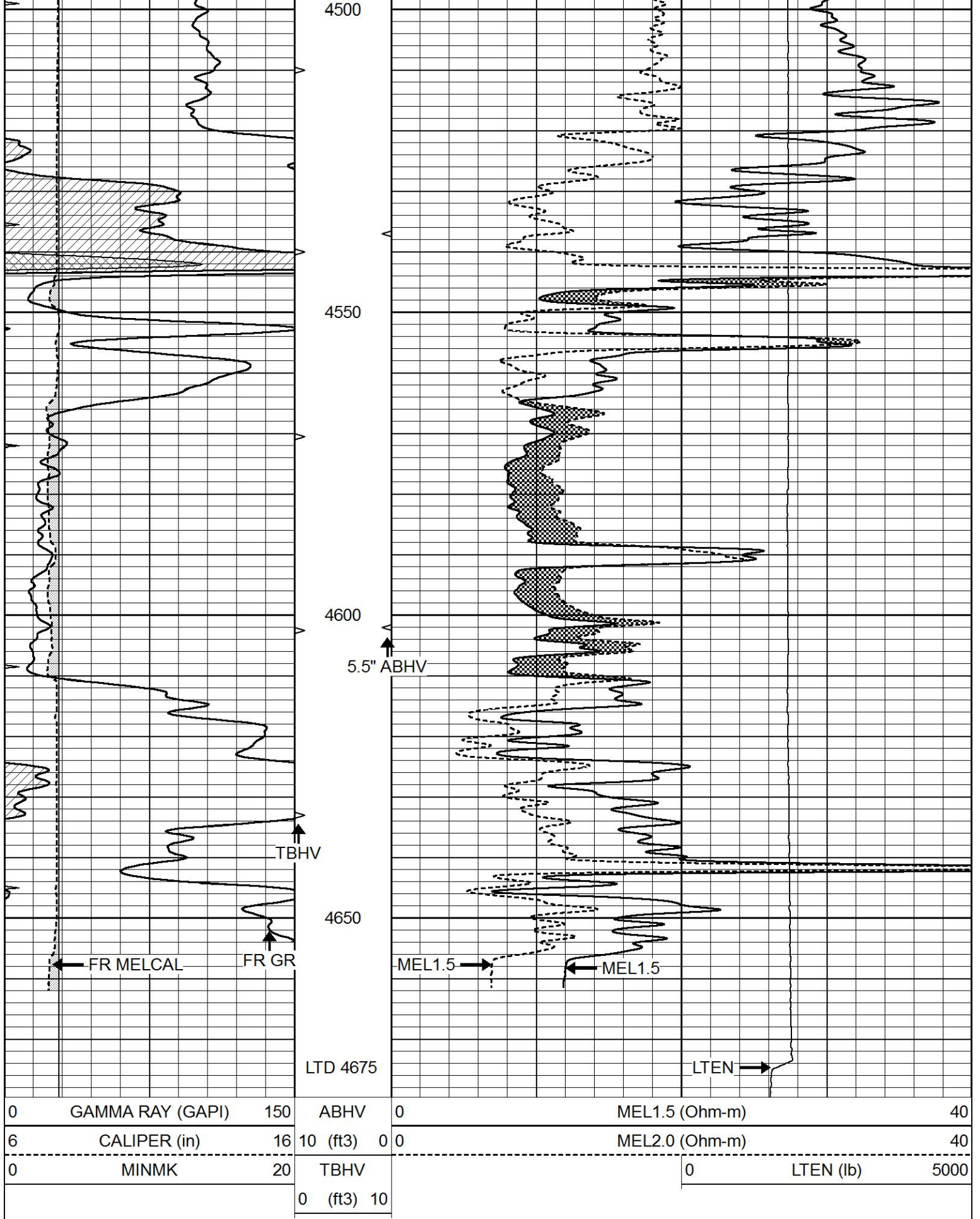








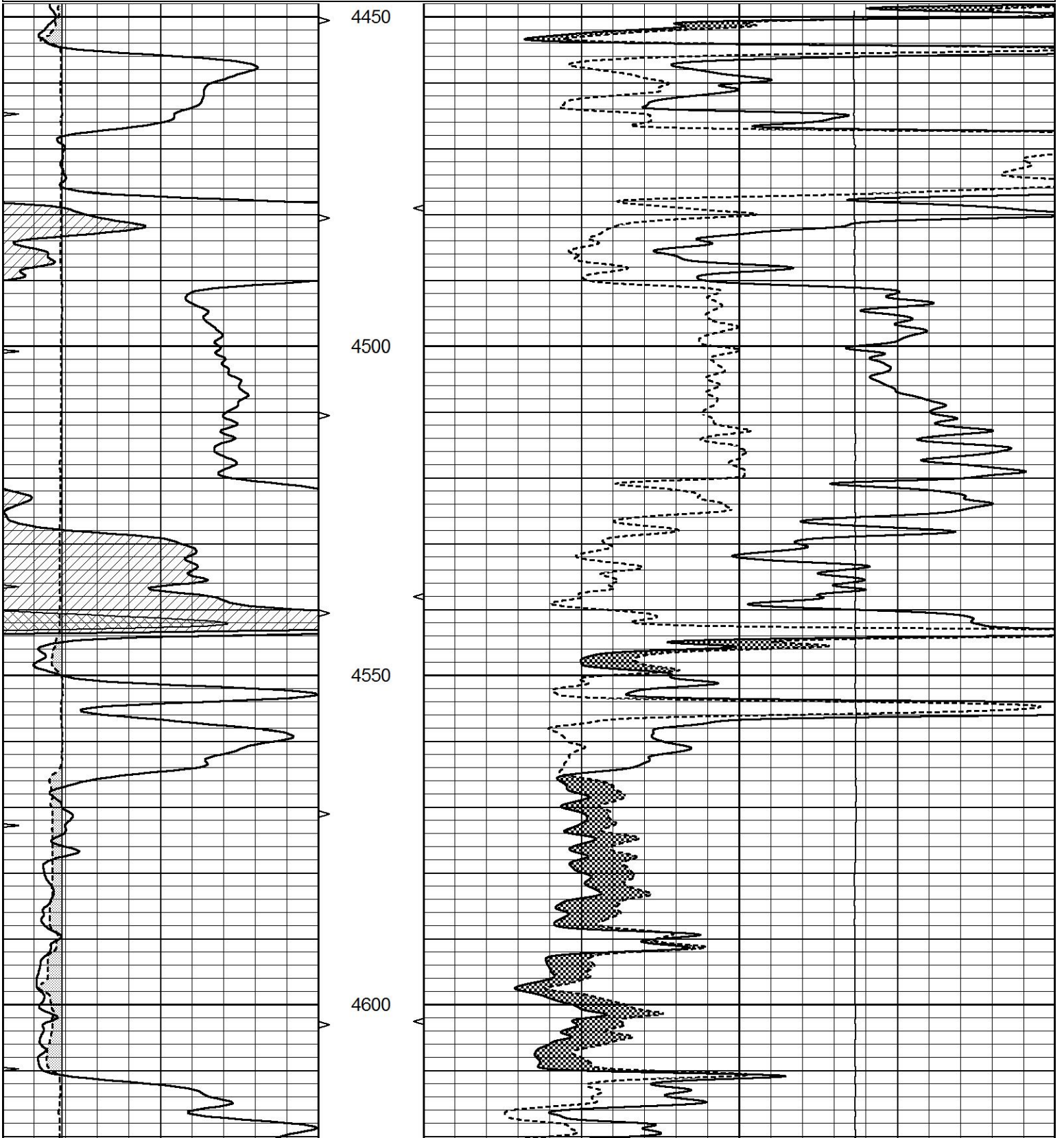


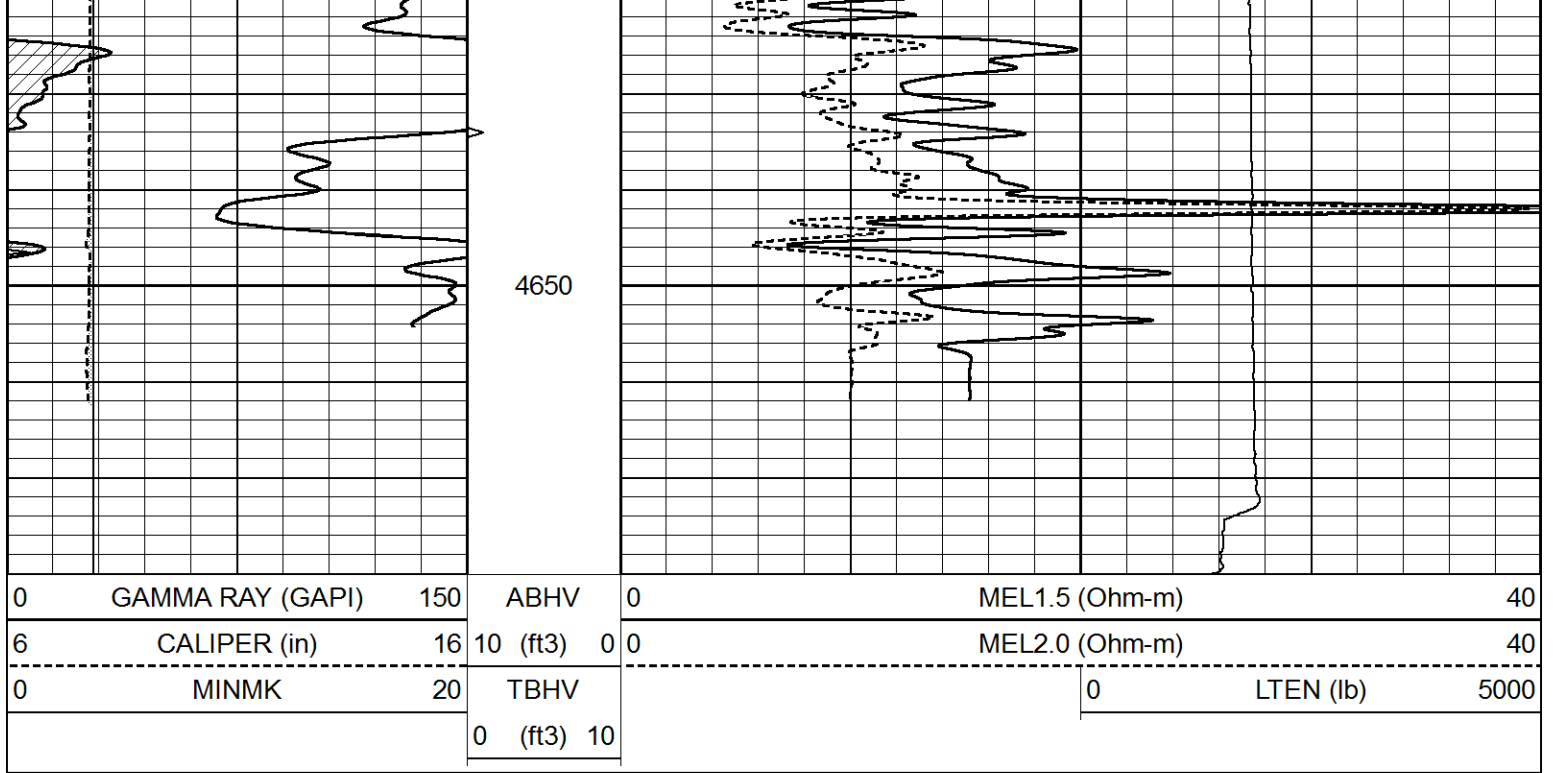


REPEAT SECTION

Database File 8425pe.db
 Dataset Pathname pass5.1
 Presentation Format _micro
 Dataset Creation Mon Mar 25 10:12:44 2024
 Charted by Depth in Feet scaled 1:240

0	GAMMA RAY (GAPI)	150	ABHV	0	MEL1.5 (Ohm-m)	40	
6	CALIPER (in)	16	10 (ft3)	0	MEL2.0 (Ohm-m)	40	
0	MINMK	20	TBHV		0	LTEN (lb)	5000
			0 (ft3)	10			





Calibration Report

Database File 8425pe.db
 Dataset Pathname pass6.3
 Dataset Creation Mon Mar 25 10:07:56 2024

MICRO Calibration Report

Serial Number:	070910	
Tool Model:	ProbeN	
Performed:	Fri Mar 22 23:53:45 2024	
Caliper Calibration:	Gain=3.376	Offset=2.498
References	Low Cal 8.000	High Cal 16.000
Readings	1.630	4.000
1.5" Calibration:	Gain=60.000	Offset=0.000
References	Low Cal 0.000	High Cal 20.000
Readings	0.000	1.216
2" Calibration:	Gain=66.000	Offset=0.000
References	Low Cal 0.000	High Cal 20.000
Readings	0.002	1.053

Gamma Ray Calibration Report

Serial Number:	070559	
Tool Model:	OPEN_GR	
Performed:	Sat Mar 23 00:13:31 2024	
Calibrator Value:	1.0	GAPI
Background Reading:	0.0	cps
Calibrator Reading:	1.0	cps
Sensitivity:	0.3000	GAPI/cps

