

# SONIC LOG



Company UNION VALLEY PETROLEUM CORP.  
 Well KING #1-36  
 Field NORTH CALDWELL  
 County SUMNER  
 State KANSAS

Company UNION VALLEY PETROLEUM CORPORATION  
 Well KING #1-36  
 Field NORTH CALDWELL  
 County SUMNER State KANSAS

Location: API #: 15-191-22863-0000  
 1420' FNL & 870' FEL  
 NE - NW - SE - NE  
 SEC 36 TWP 33S RGE 4W  
 Permanent Datum GROUND LEVEL Elevation 1221  
 Log Measured From KELLY BUSHING 13' A.G.L.  
 Drilling Measured From KELLY BUSHING

Other Services  
 CDL/CNL/PE  
 DIL/MEI  
 Elevation  
 K.B. 1234  
 D.F. 1232  
 G.L. 1221

|                              |                |
|------------------------------|----------------|
| Date                         | 3/25/24        |
| Run Number                   | TWO            |
| Depth Driller                | 4675           |
| Depth Logger                 | 4675           |
| Bottom Logged Interval       | 4667           |
| Top Log Interval             | 300            |
| Casing Driller               | 8.625@310      |
| Casing Logger                | 310            |
| Bit Size                     | 7.785          |
| Type Fluid in Hole           | CHEMICAL MUD   |
| Density / Viscosity          | 9.3/55         |
| pH / Fluid Loss              | 10.0/10.0      |
| Source of Sample             | FLOWLINE       |
| Rm @ Meas. Temp              | .880@72F       |
| Rmf @ Meas. Temp             | .660@72F       |
| Rmc @ Meas. Temp             | 1.06@72F       |
| Source of Rmf / Rmc          | MEASUREMENT    |
| Rm @ BHT                     | .519@122F      |
| Time Circulation Stopped     | 5 HOURS        |
| Time Logger on Bottom        | 8:00 A.M.      |
| Maximum Recorded Temperature | 122F           |
| Equipment Number             | 922339         |
| Location                     | HAYS, KANSAS   |
| Recorded By                  | JEFF LUEBBERS  |
| Witnessed By                 | DUSTIN JOHNSON |

<<< Fold Here >>>

All interpretations are opinions based on inferences from electrical or other measurements and we cannot and do not guarantee the accuracy or correctness of any interpretation, and we shall not, except in the case of gross or willful negligence on our part, be liable or responsible for any loss, costs, damages, or expenses incurred or sustained by anyone resulting from any interpretation made by any of our officers, agents or employees. These interpretations are also subject to our general terms and conditions set out in our current Price Schedule.

15-191-22863-0000 Comments

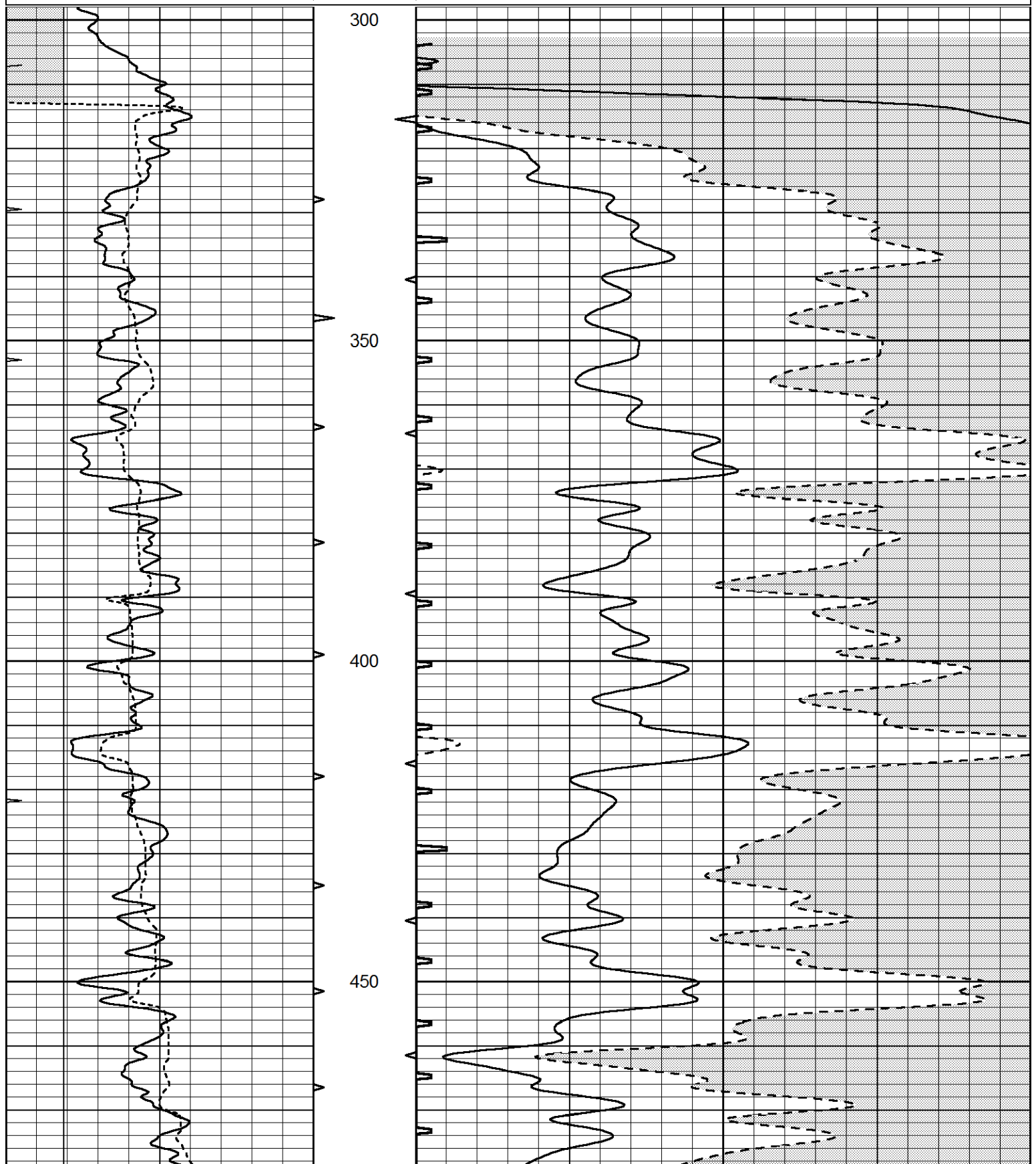
THANK YOU FOR USING ELI WIRELINE HAYS. KANSAS (785) 628-6395  
 DIRECTIONS  
 ANTHONY, KS., APPROX. 19E. ON HWY 44 TO "BLUFF RD." 1S., S.W. INTO

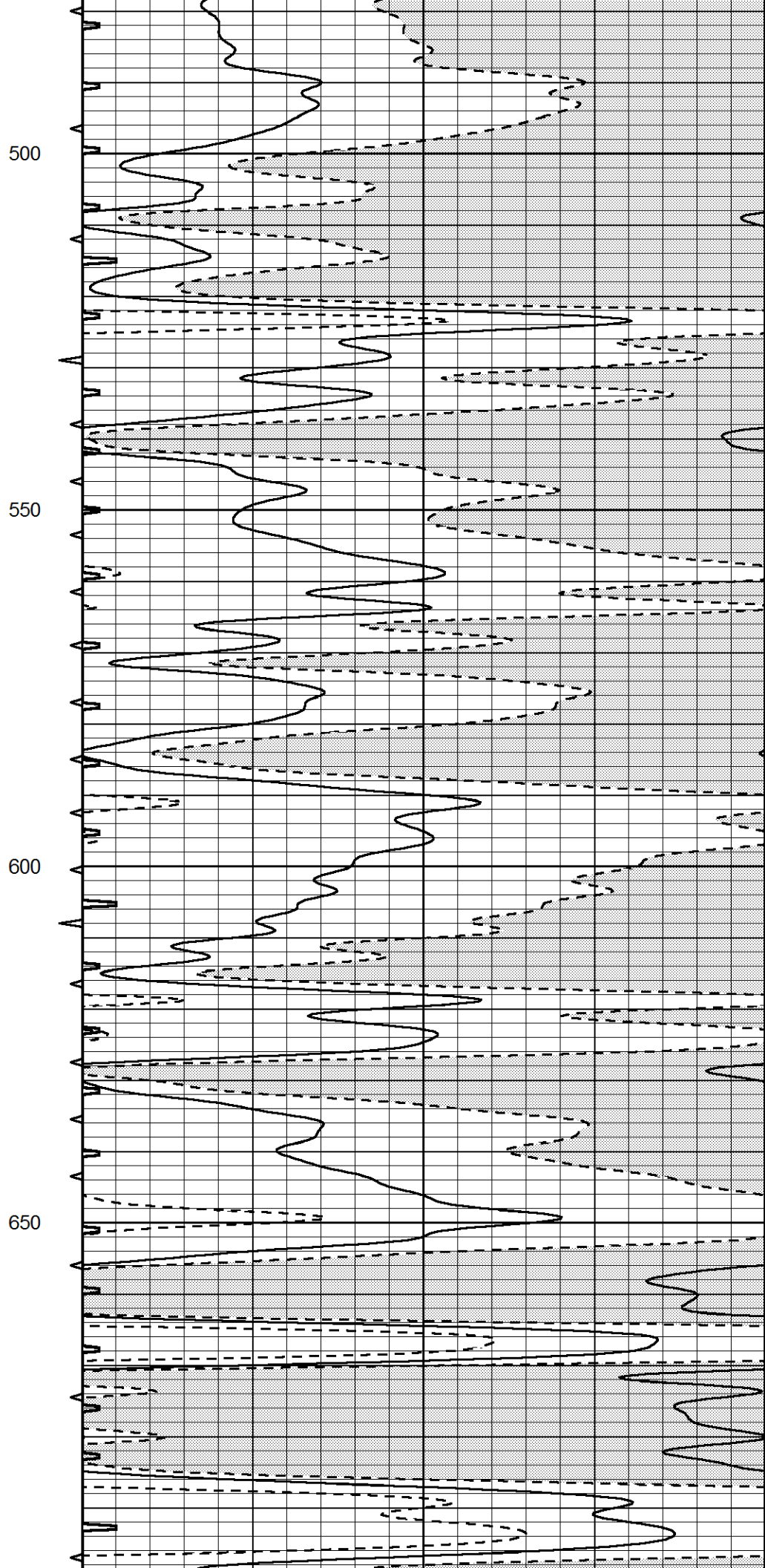
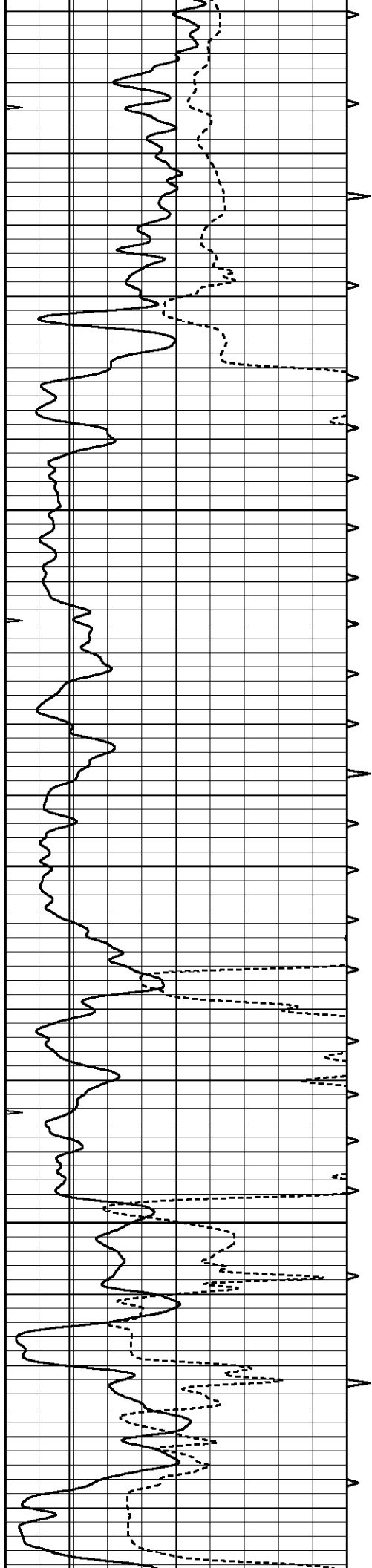


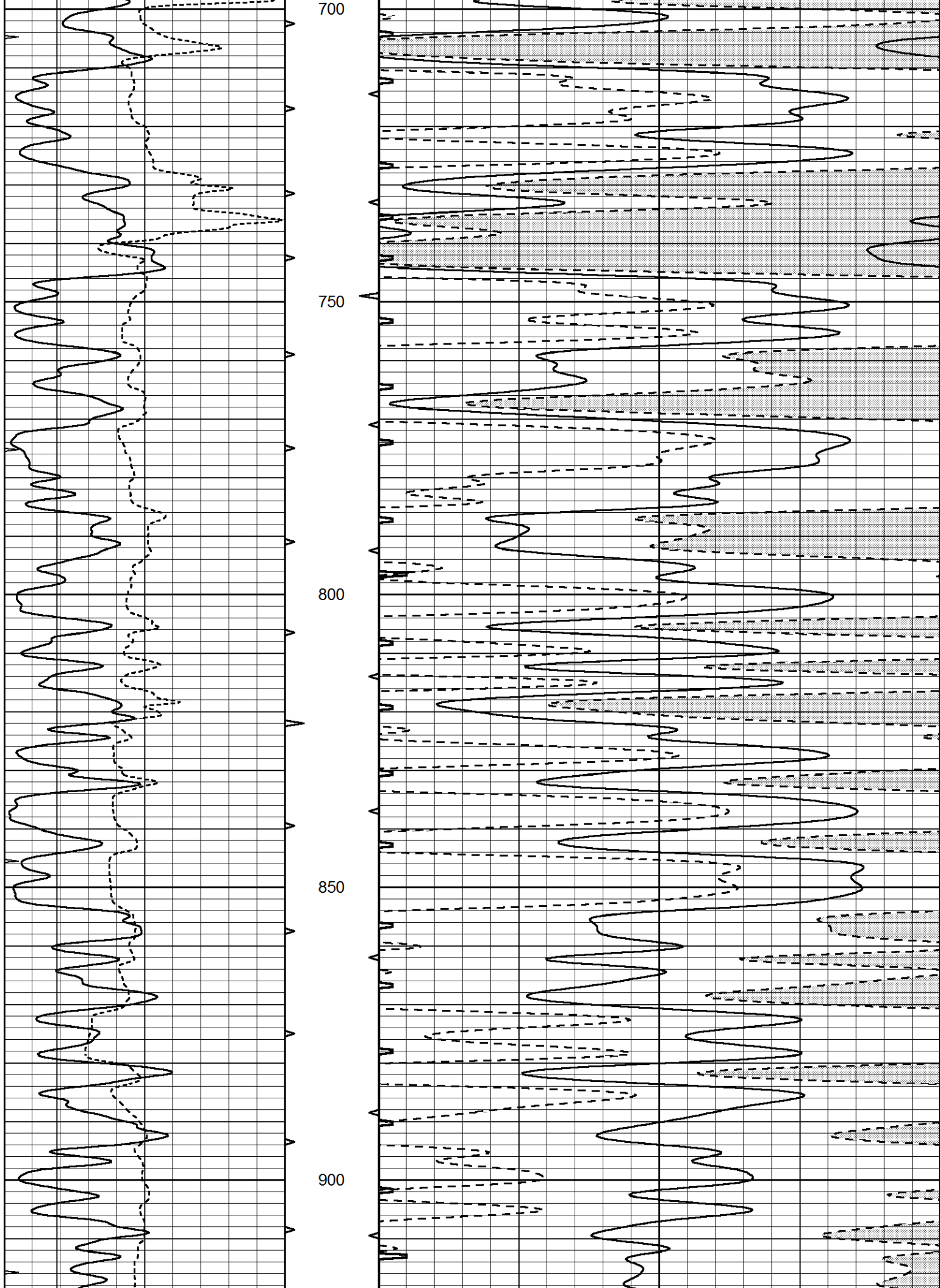
# MAIN SECTION

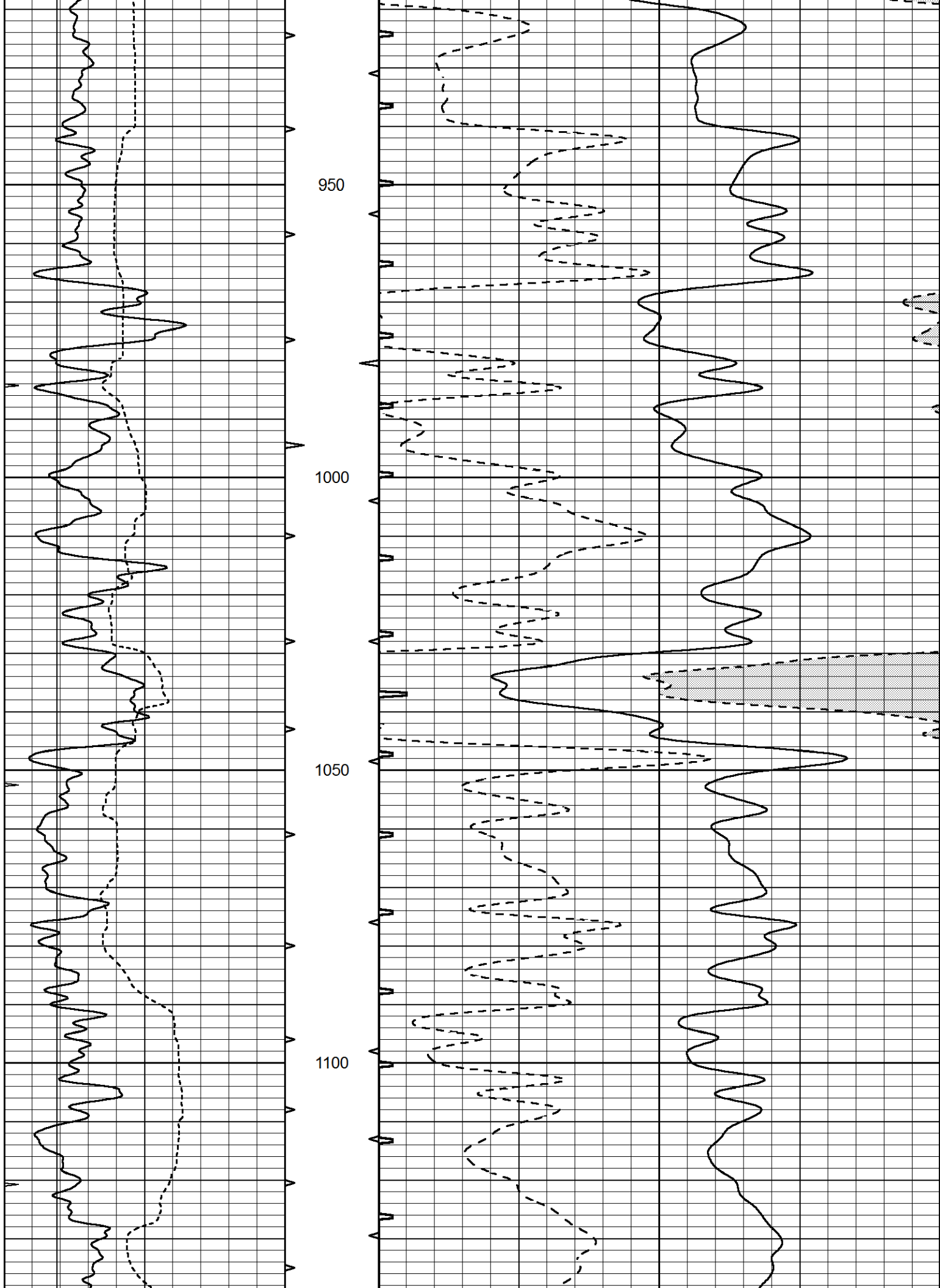
Database File 8425pe.db  
 Dataset Pathname pass6.5  
 Presentation Format slt  
 Dataset Creation Mon Mar 25 10:36:39 2024  
 Charted by Depth in Feet scaled 1:240

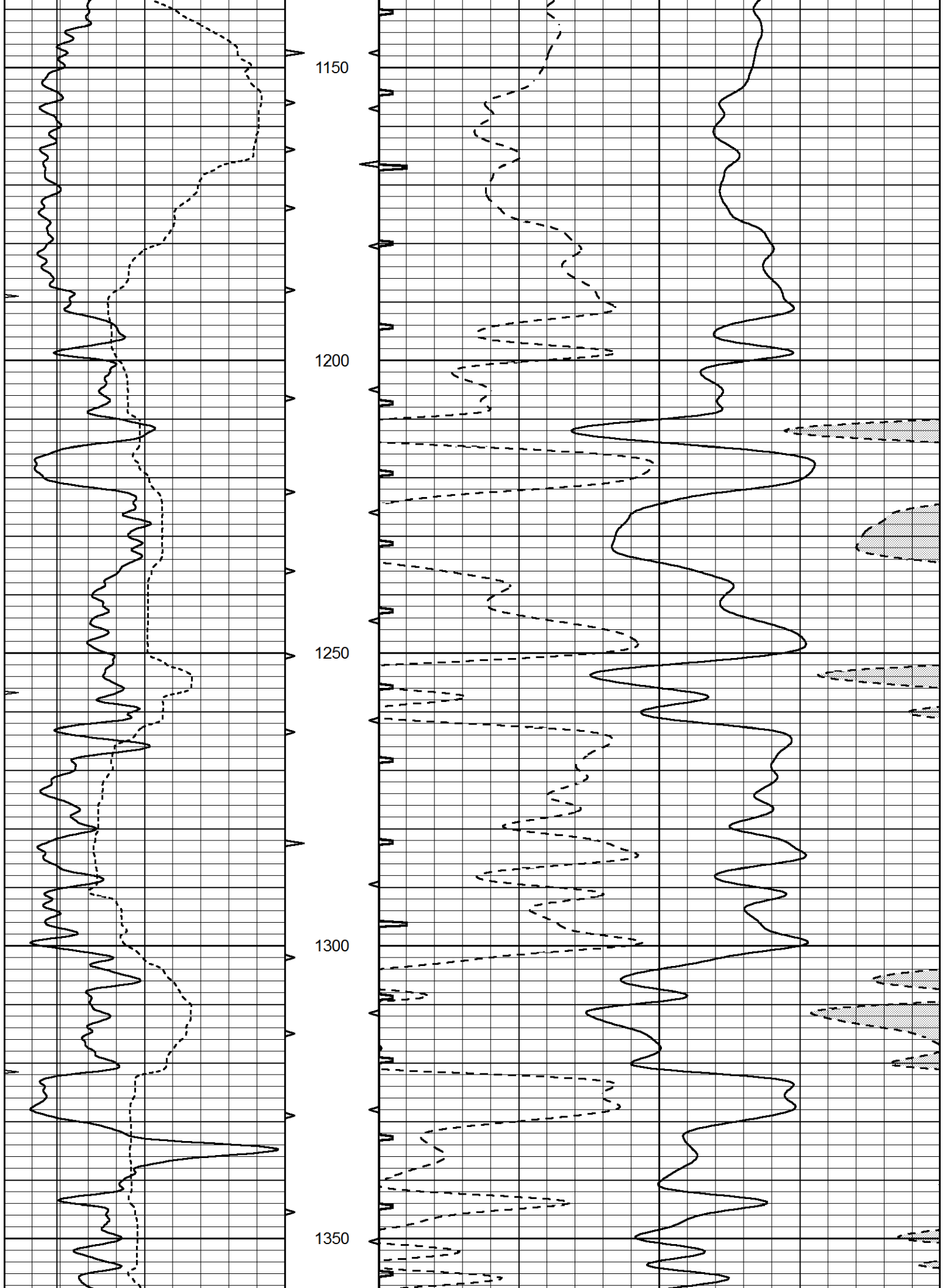
|   |                  |     |          |     |                      |     |
|---|------------------|-----|----------|-----|----------------------|-----|
| 0 | GAMMA RAY (GAPI) | 150 | ABHV     | 140 | DELTA TIME (usec/ft) | 40  |
| 6 | CALIPER (in)     | 16  | 10 (ft3) | 0   | SONIC POROSITY (pu)  | -10 |
| 0 | MINMK            | 20  | TBHV     | 0   | ITT (msec)           | 20  |
|   |                  |     | 0 (ft3)  | 10  |                      |     |

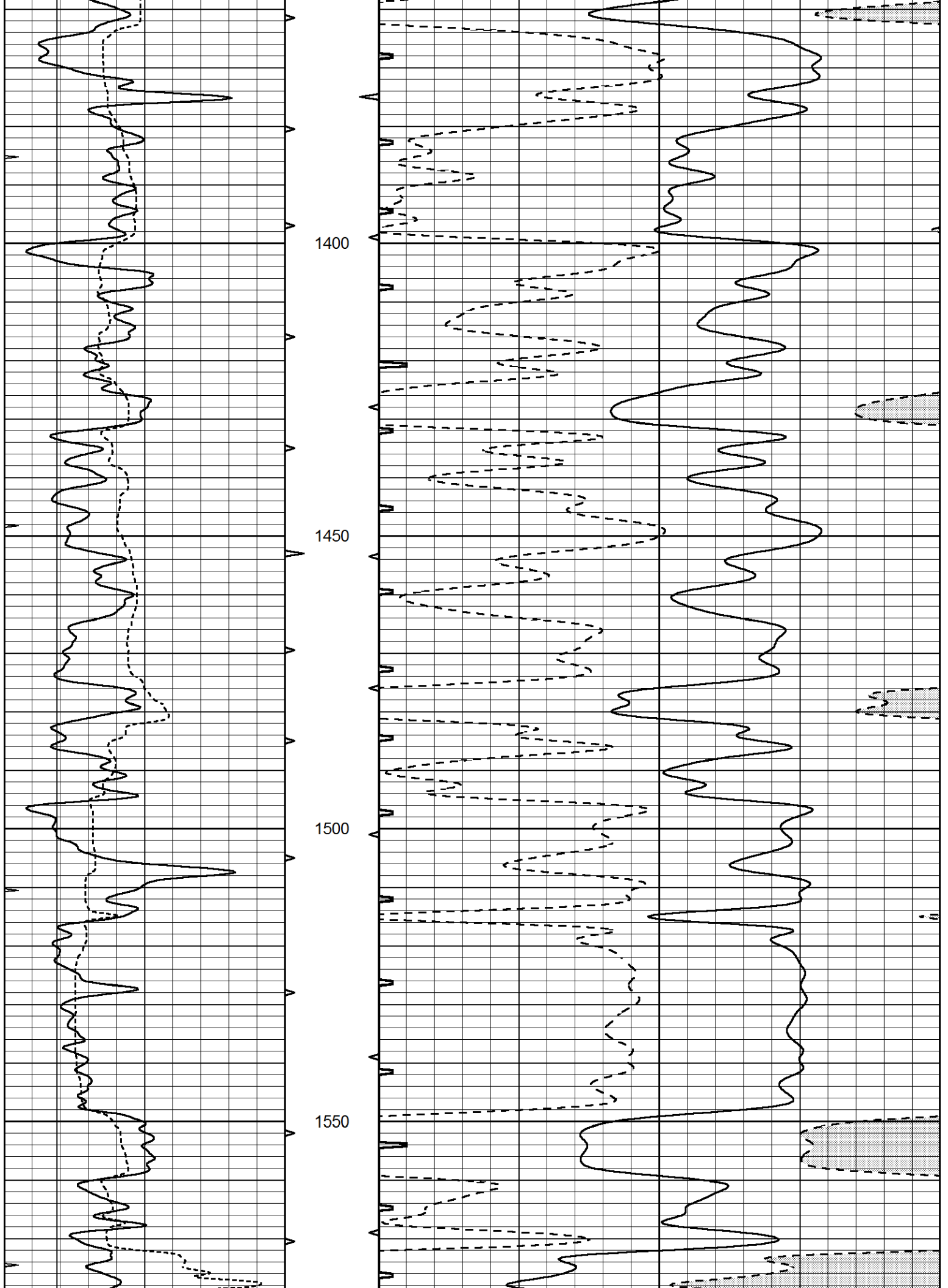


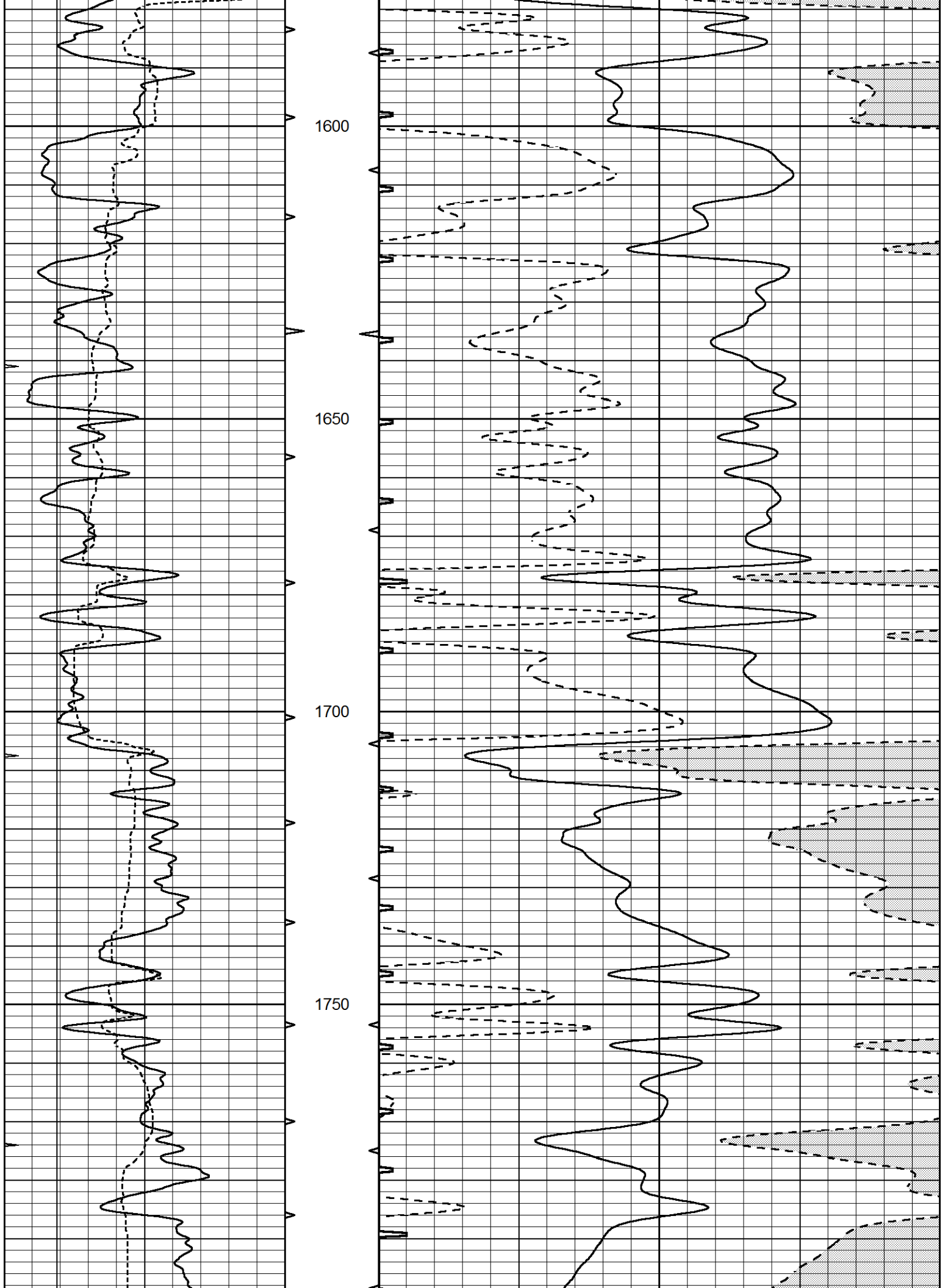


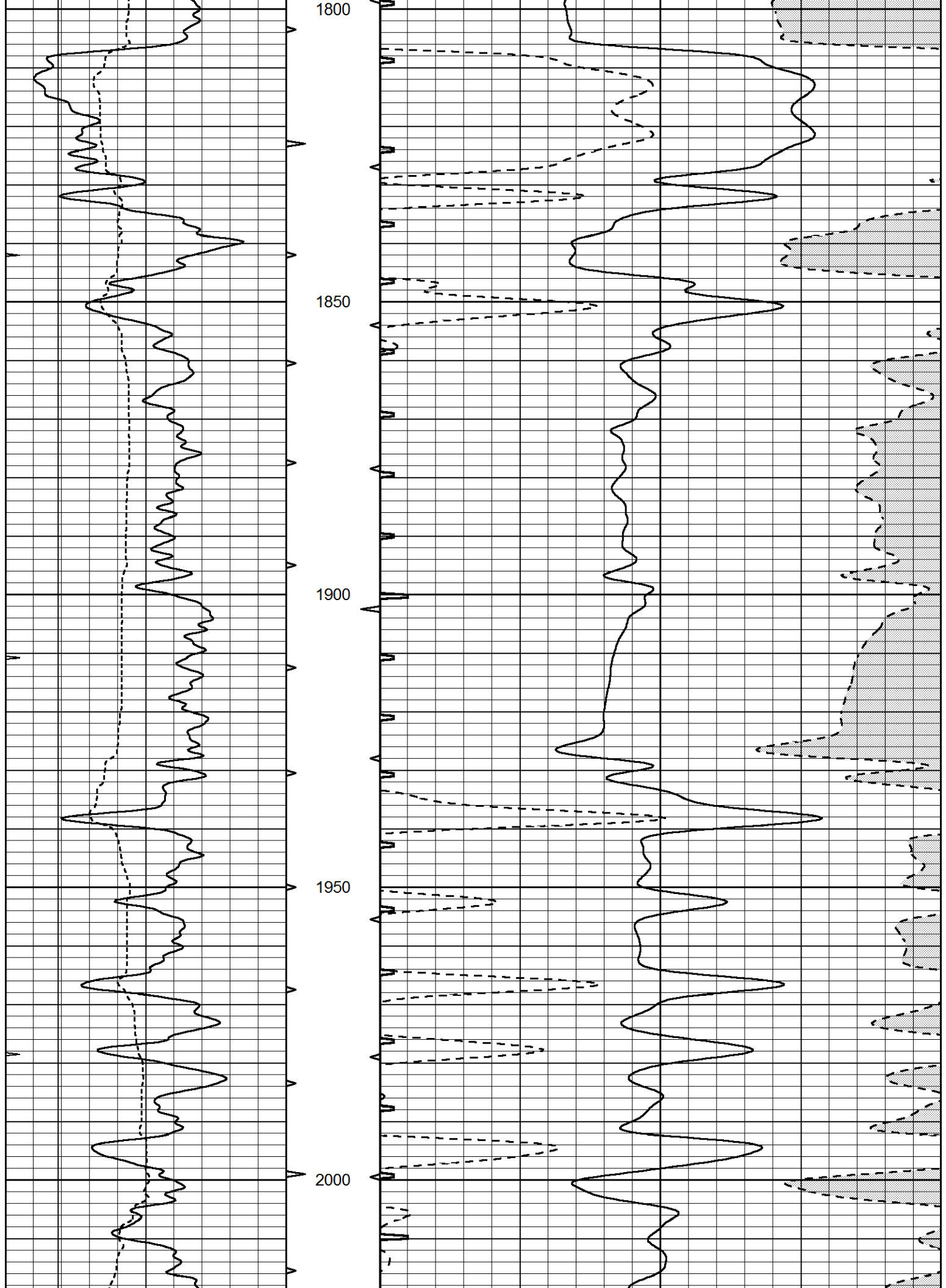


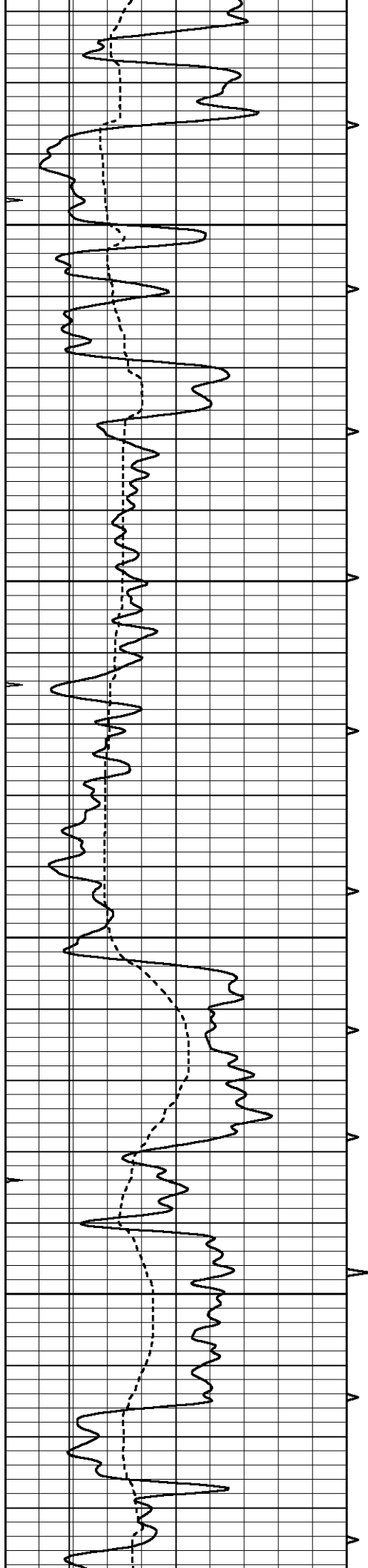










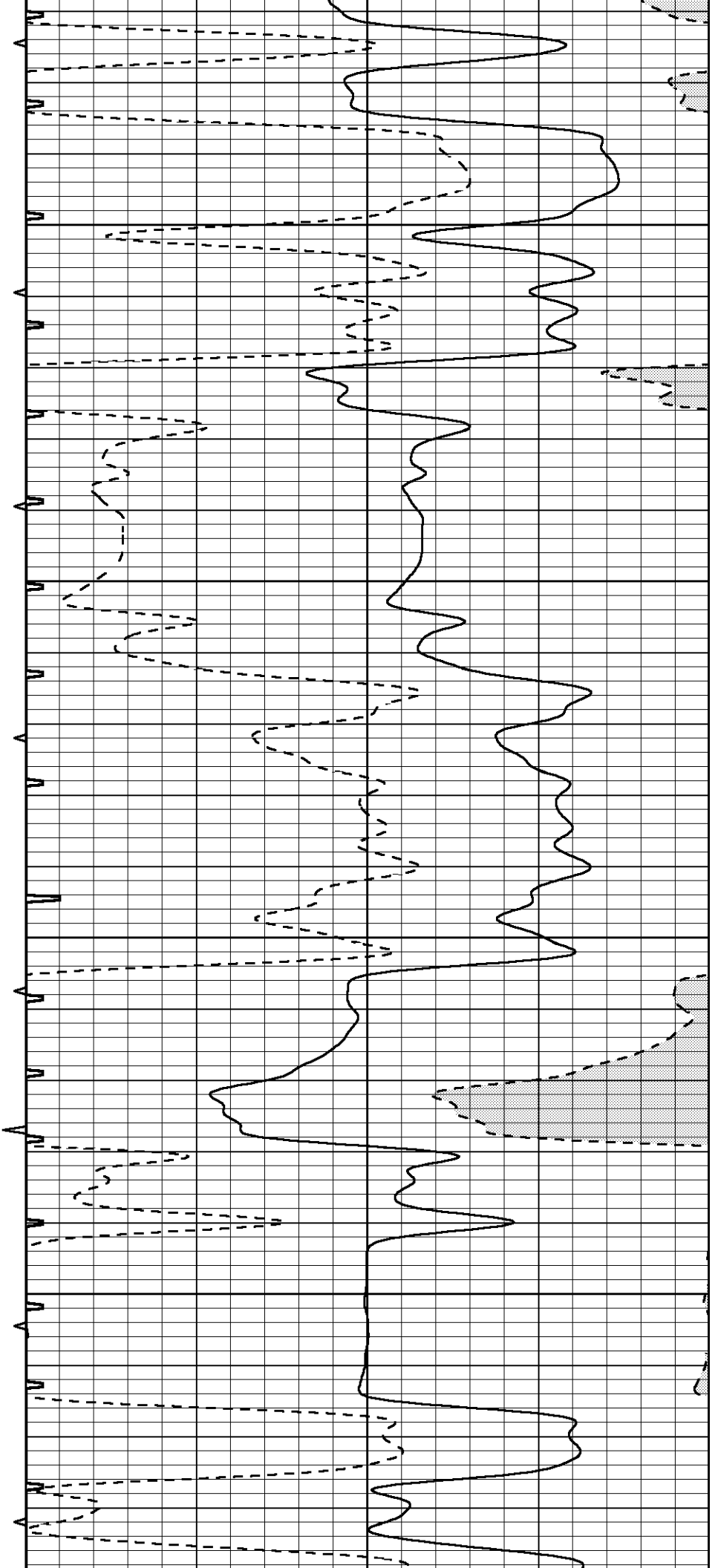


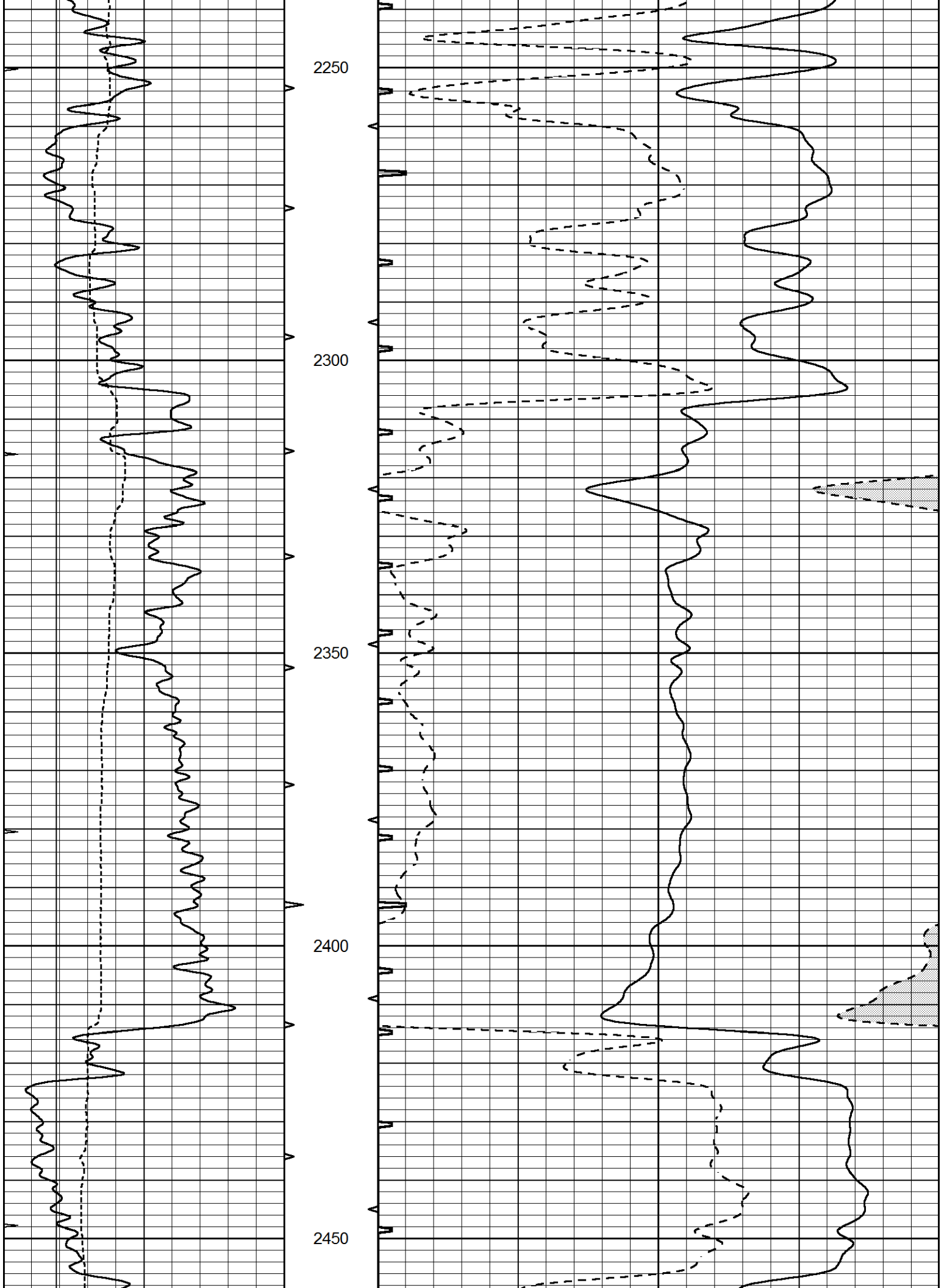
2050

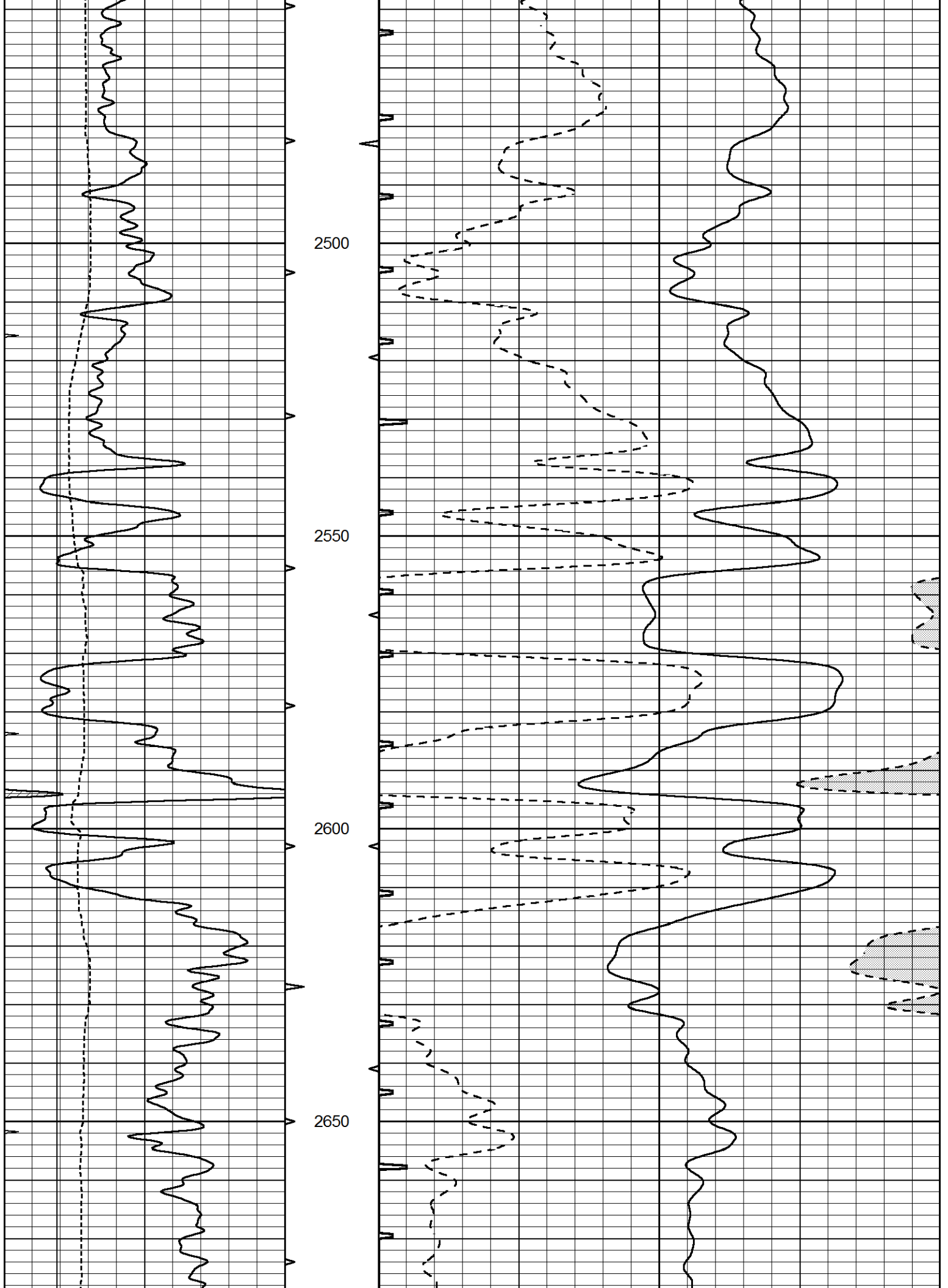
2100

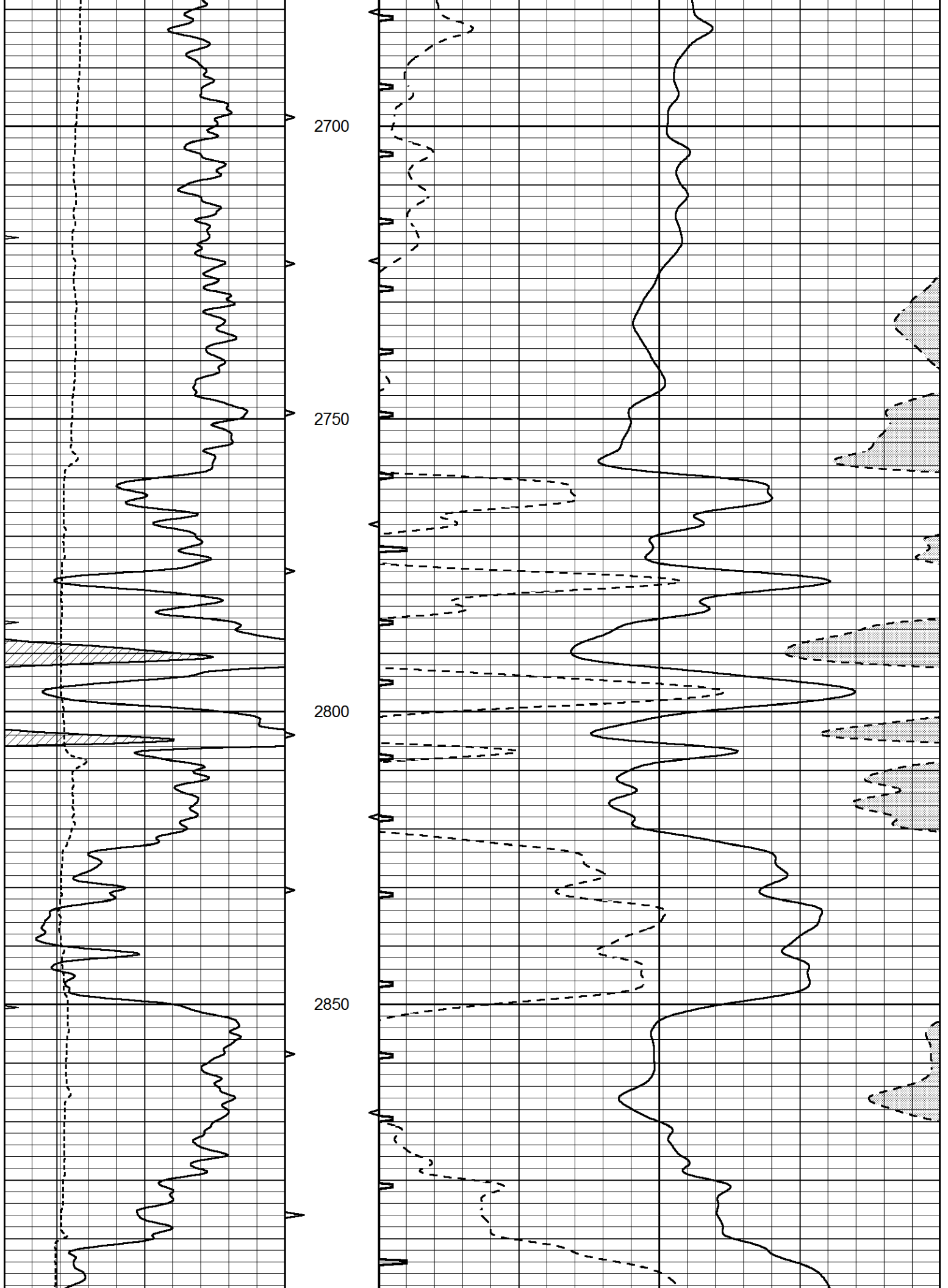
2150

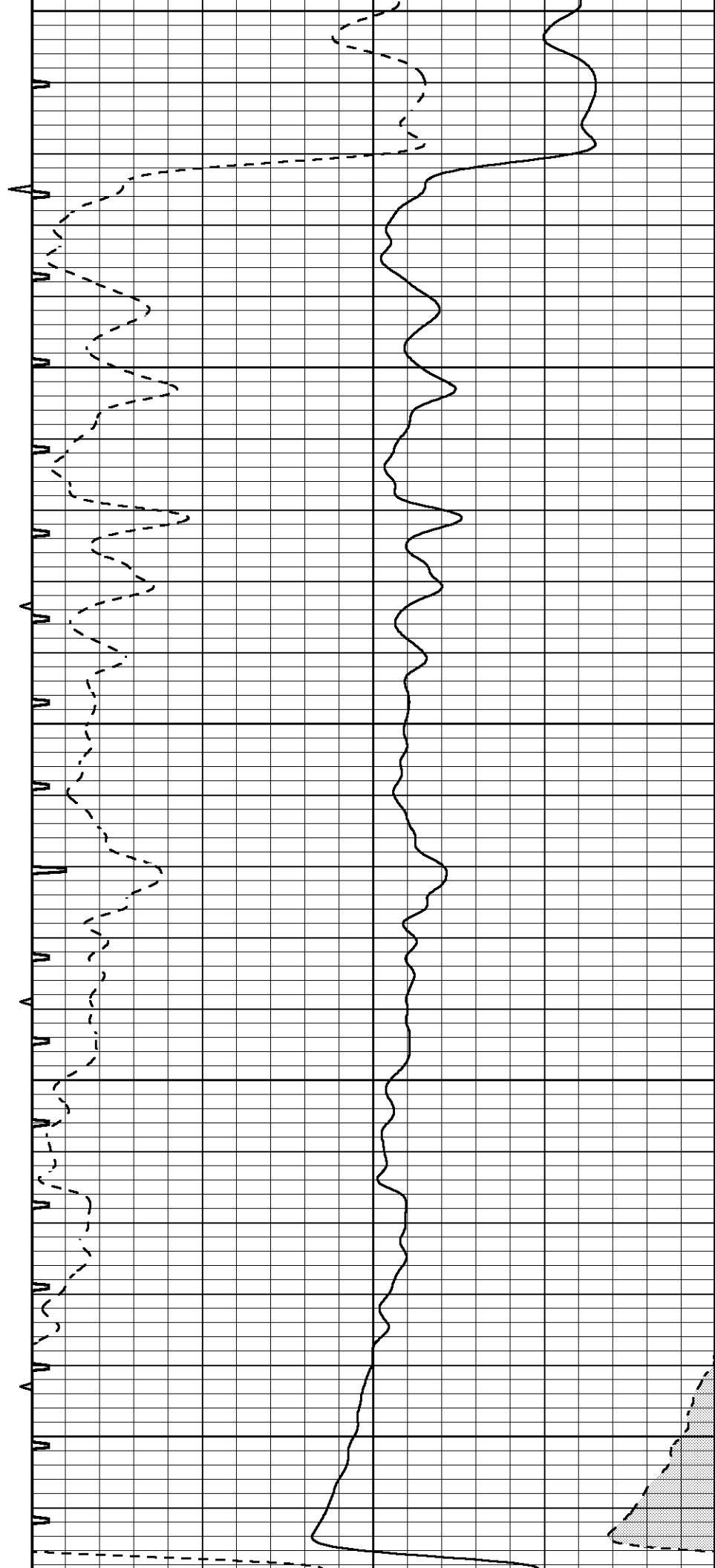
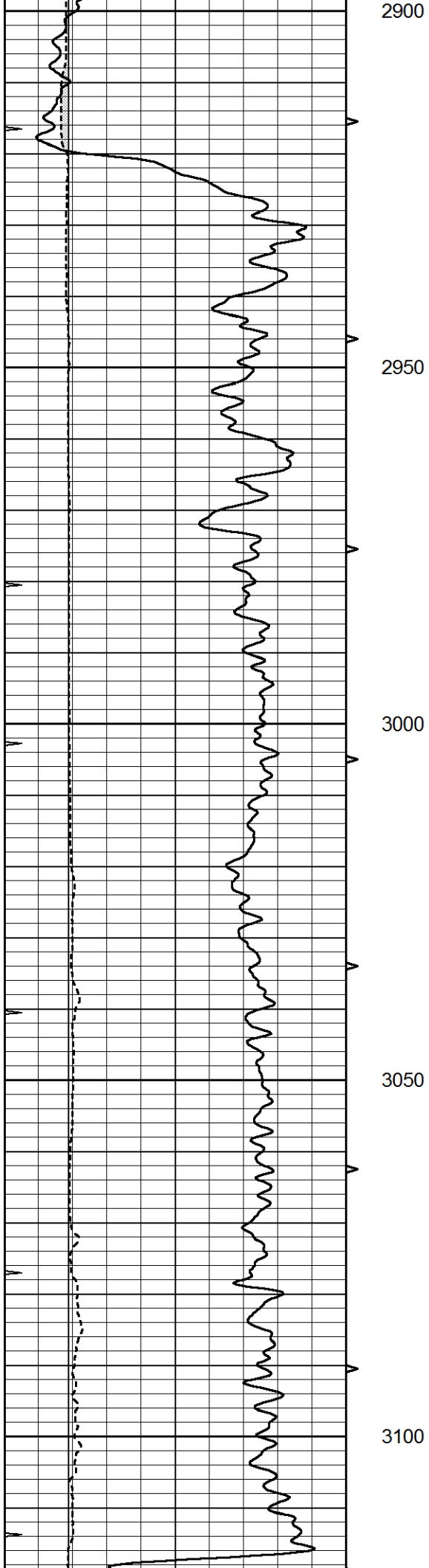
2200

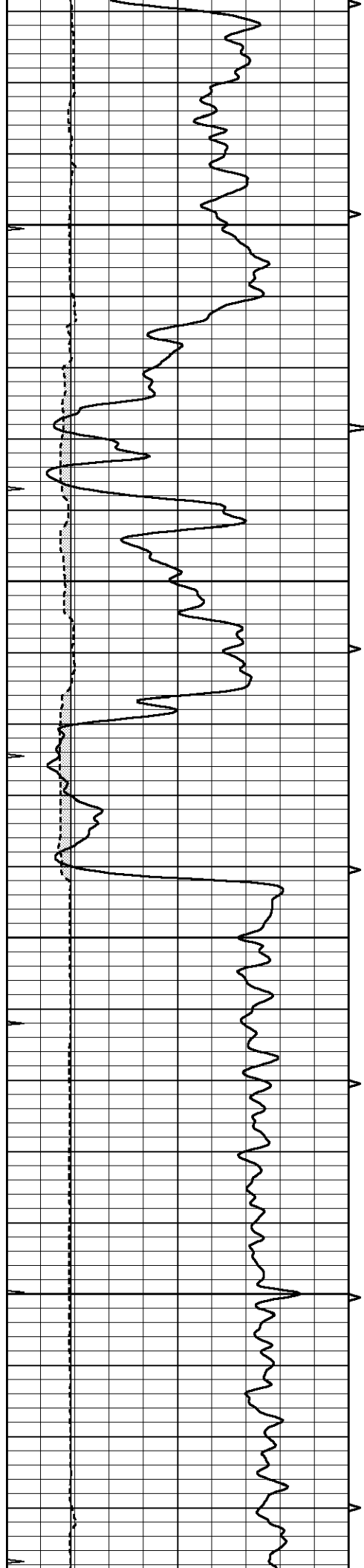










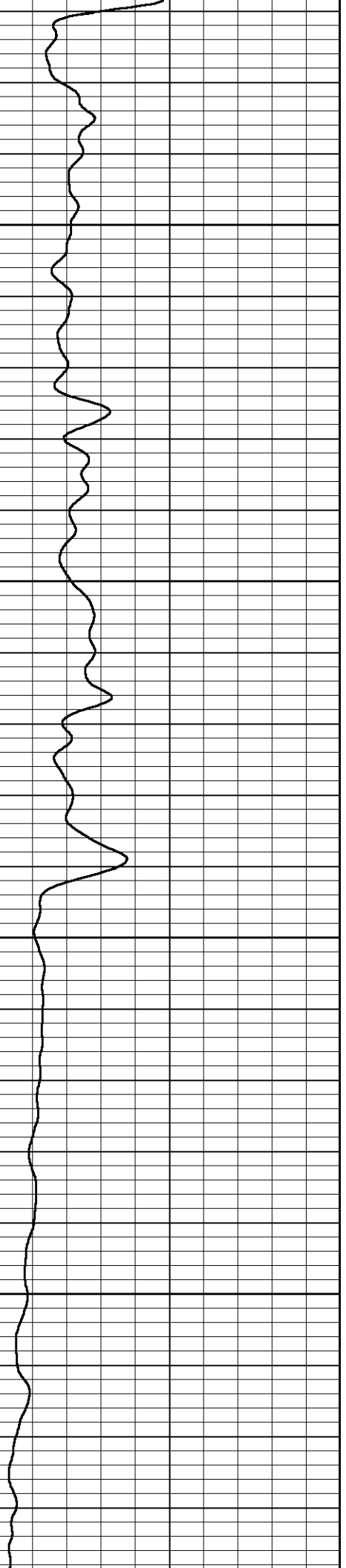
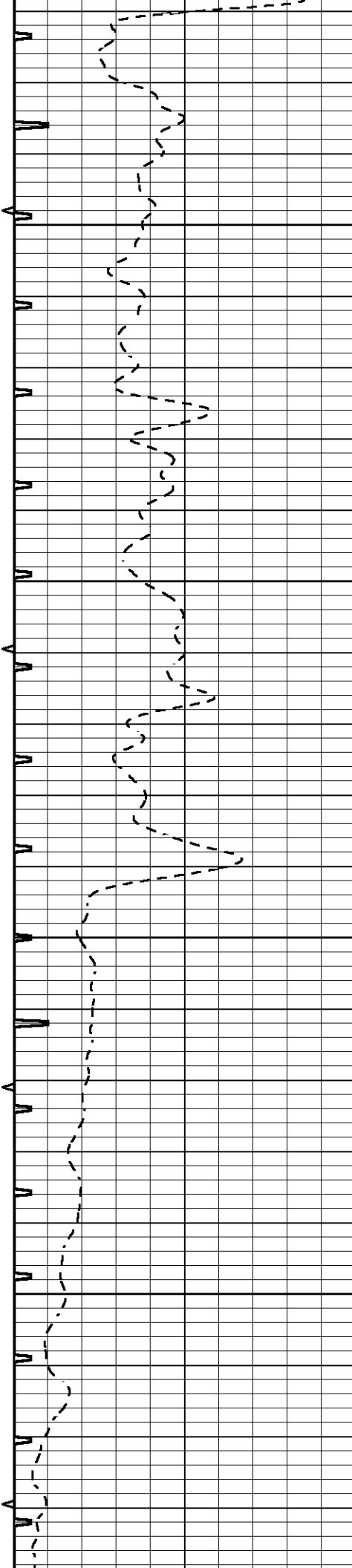


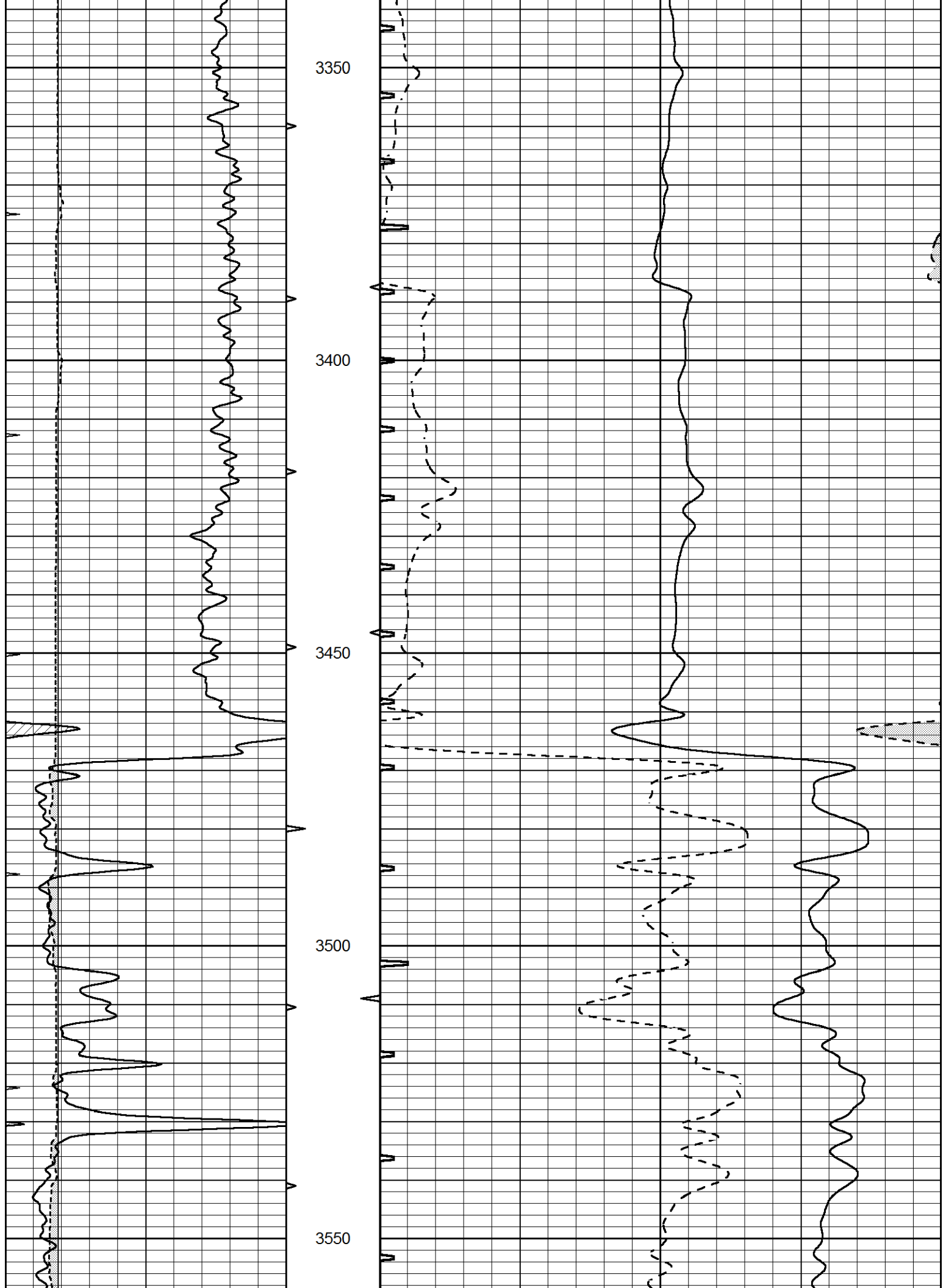
3150

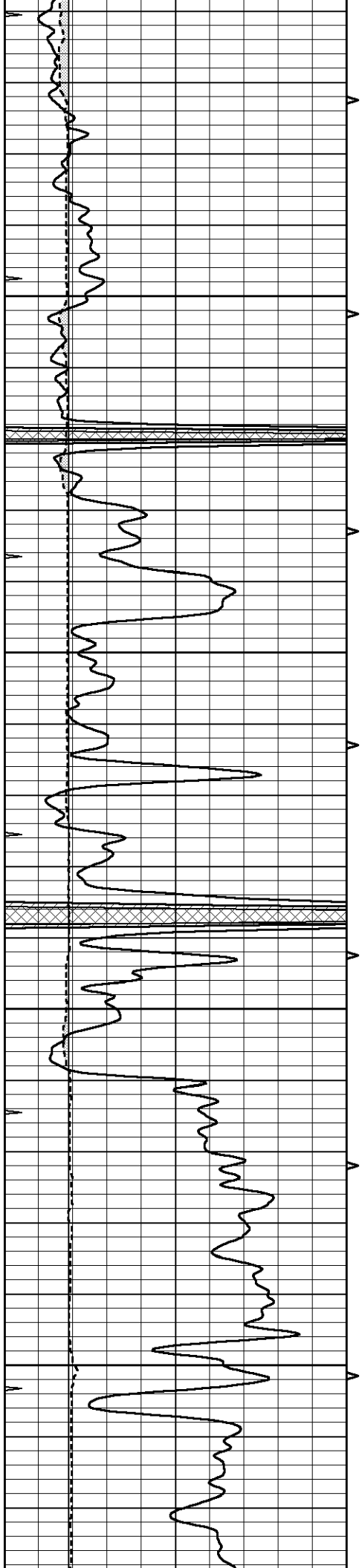
3200

3250

3300





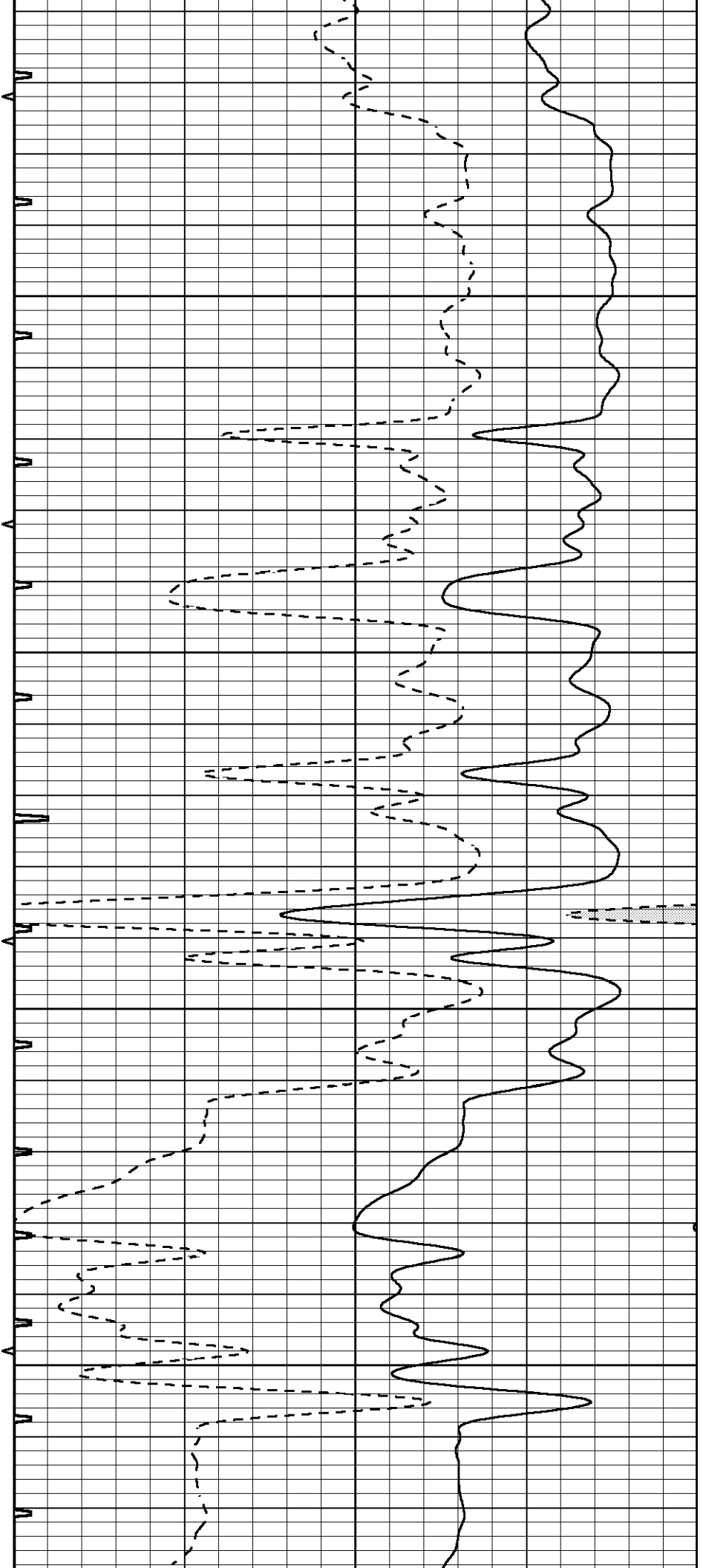


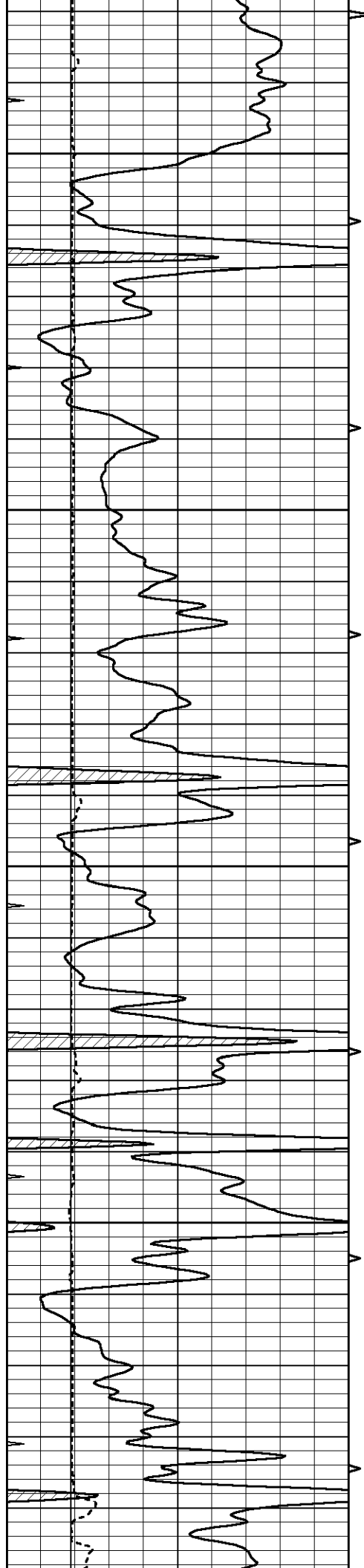
3600

3650

3700

3750



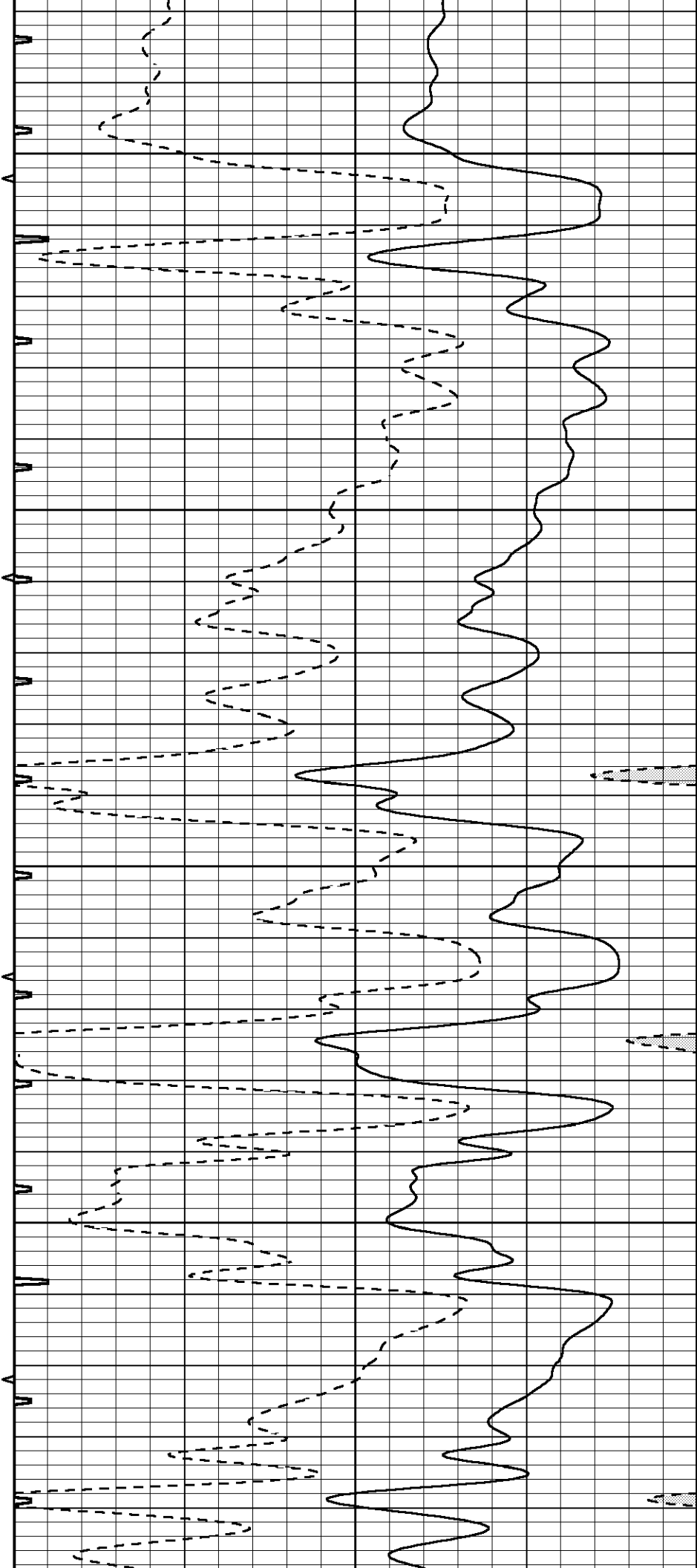


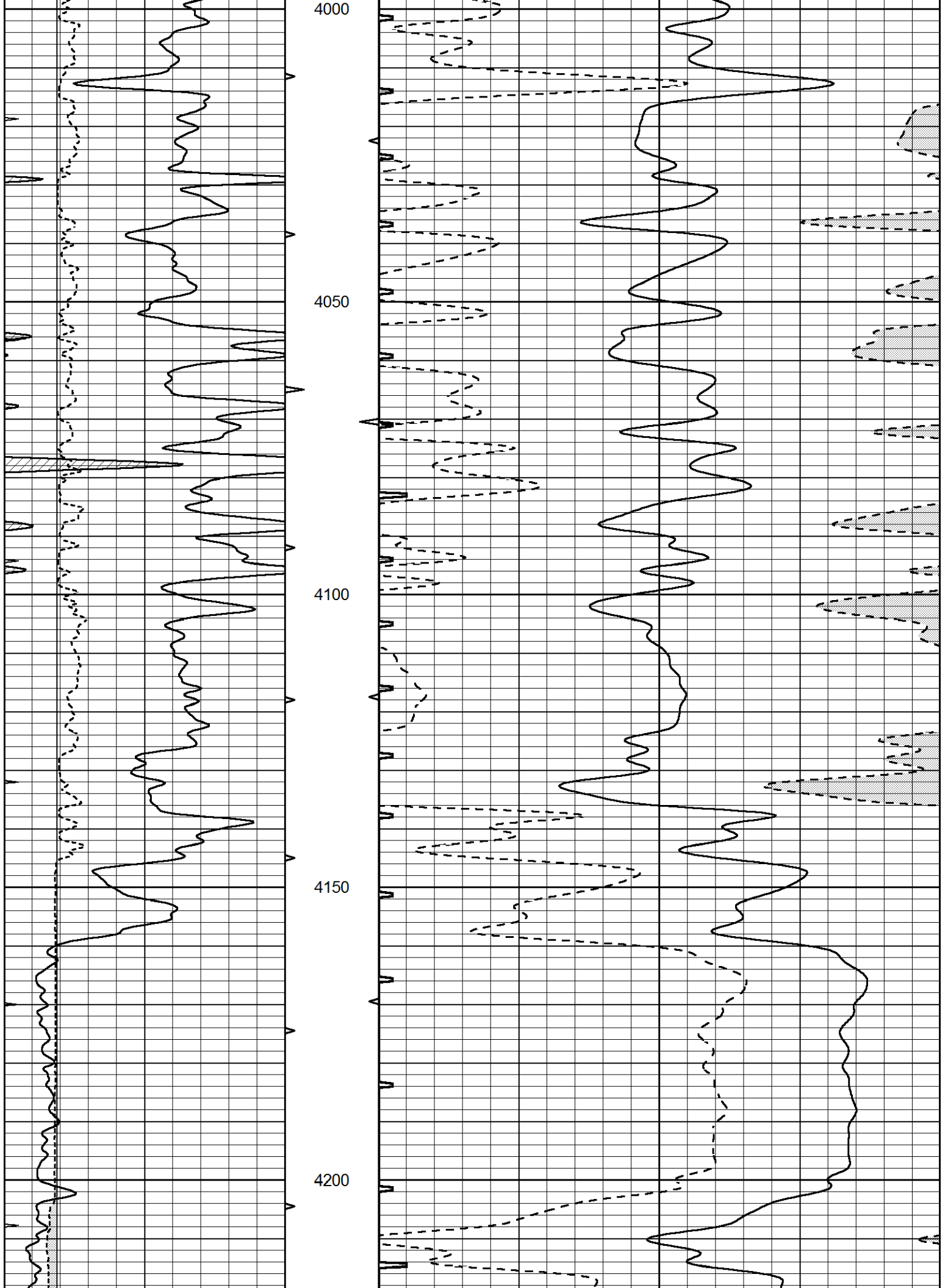
3800

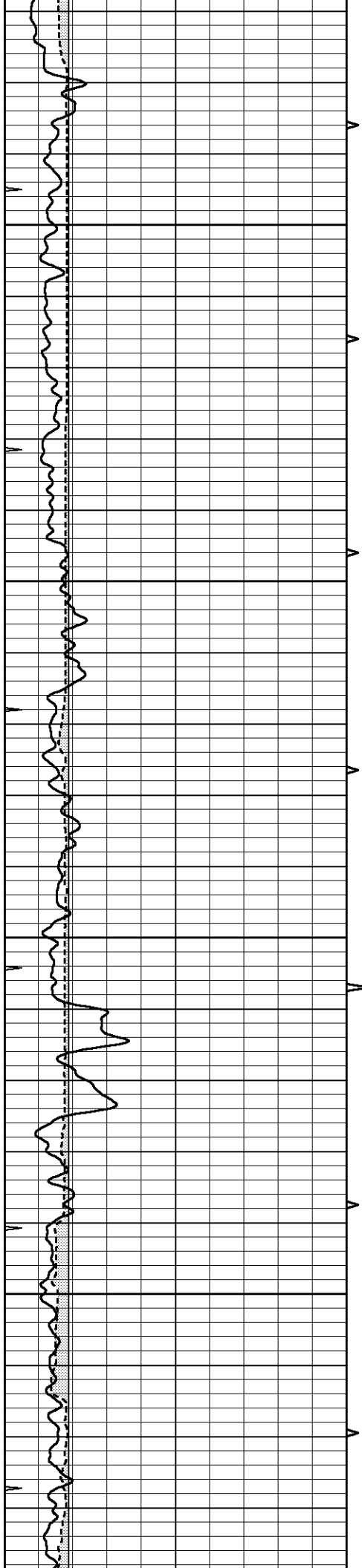
3850

3900

3950





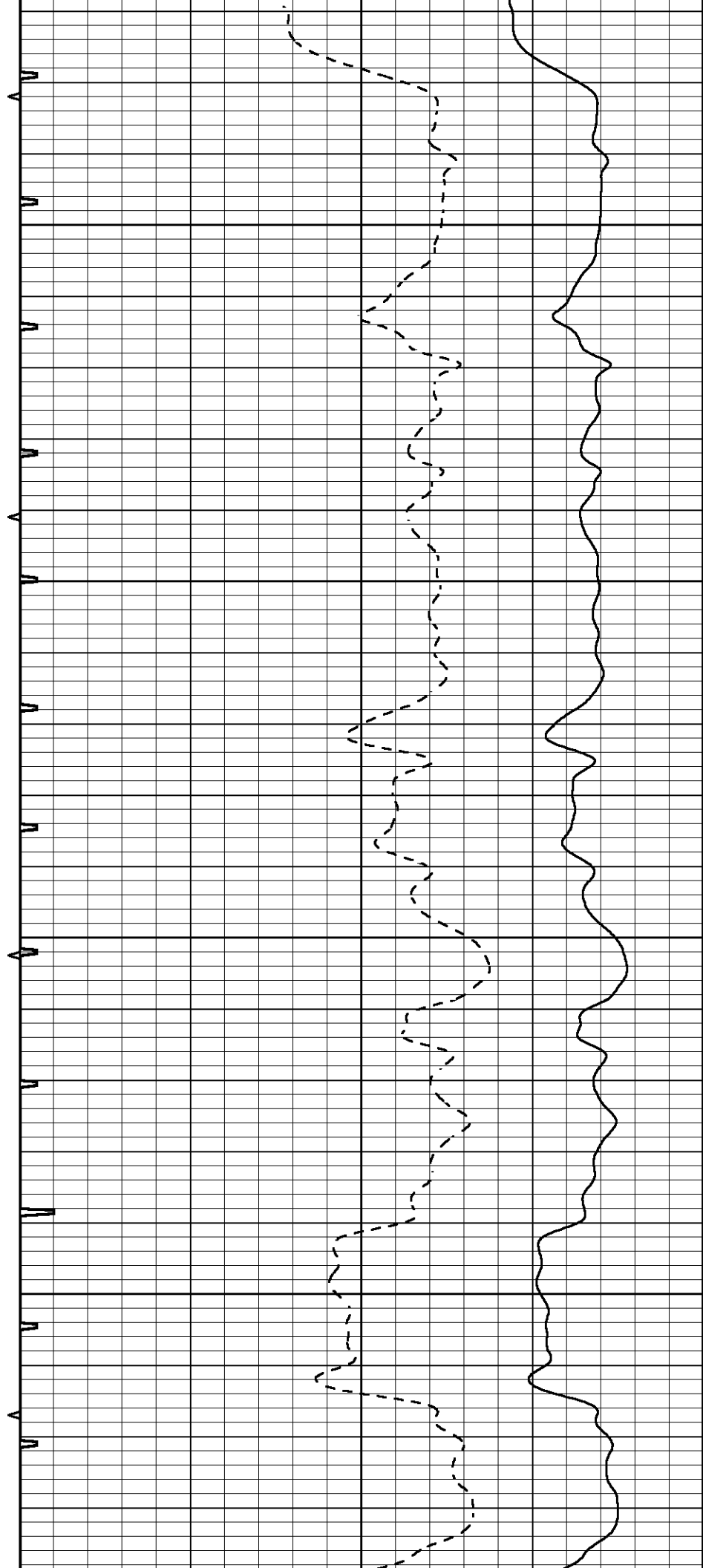


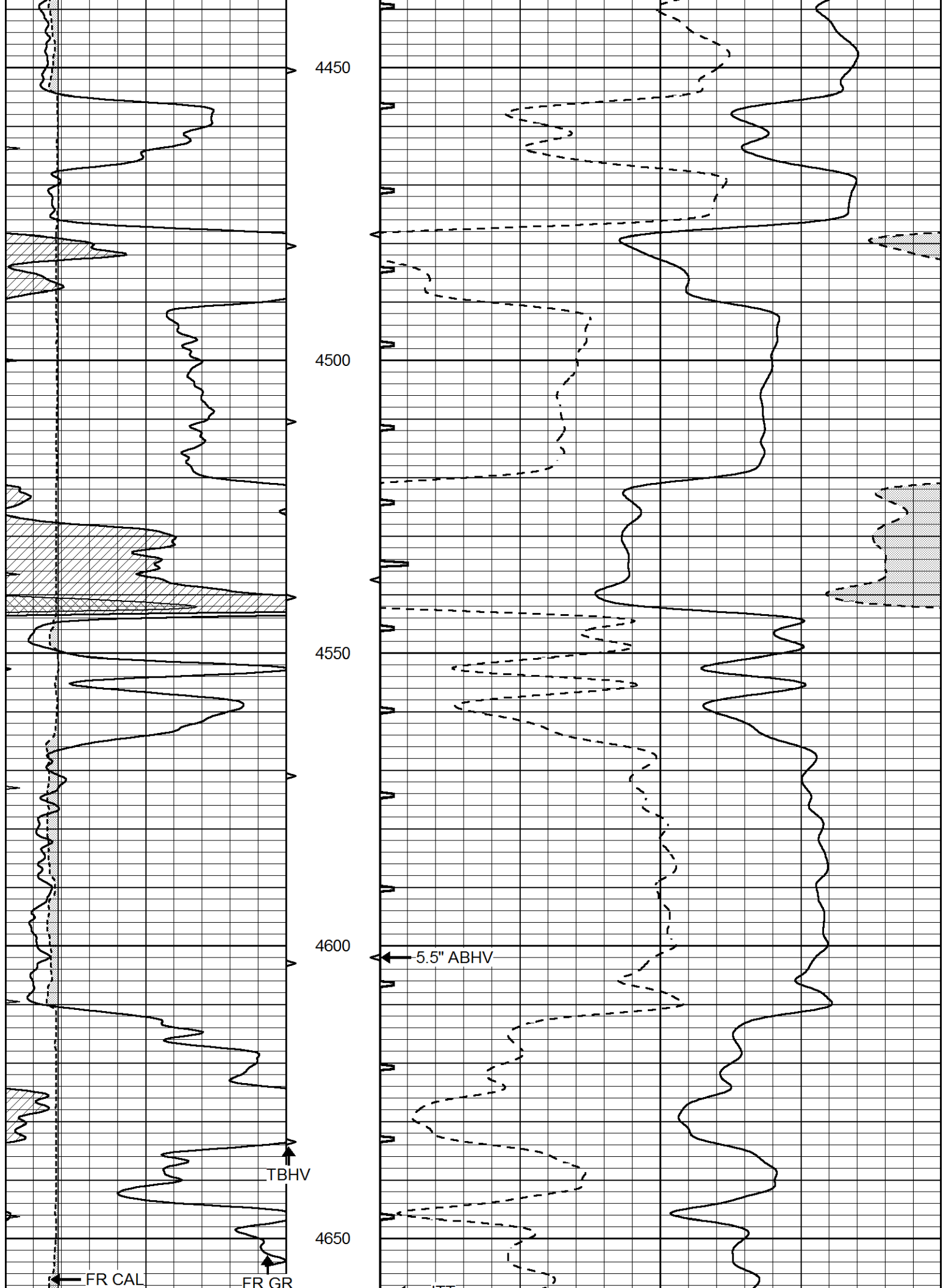
4250

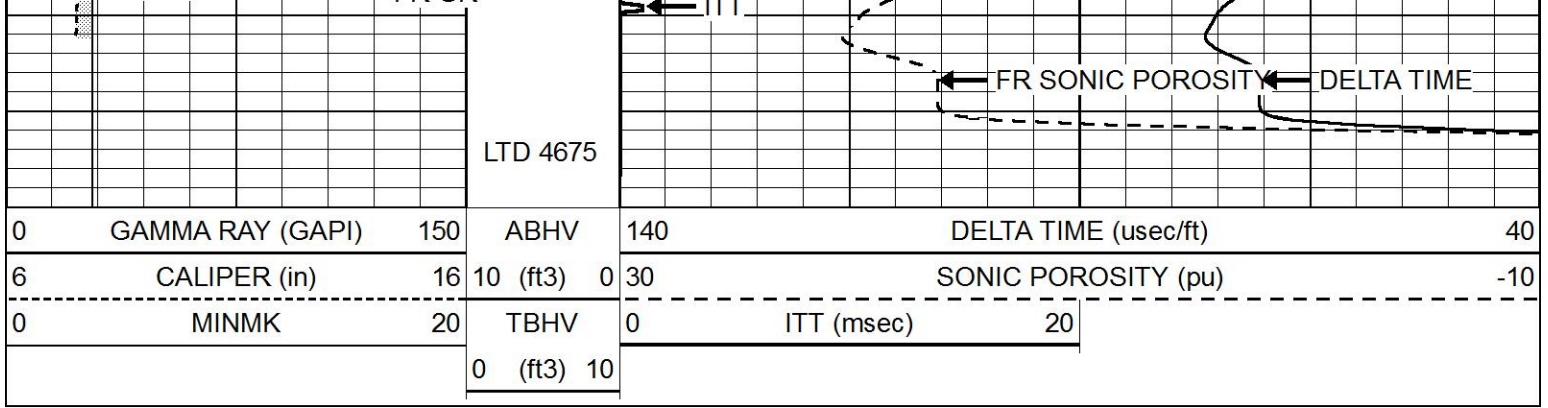
4300

4350

4400

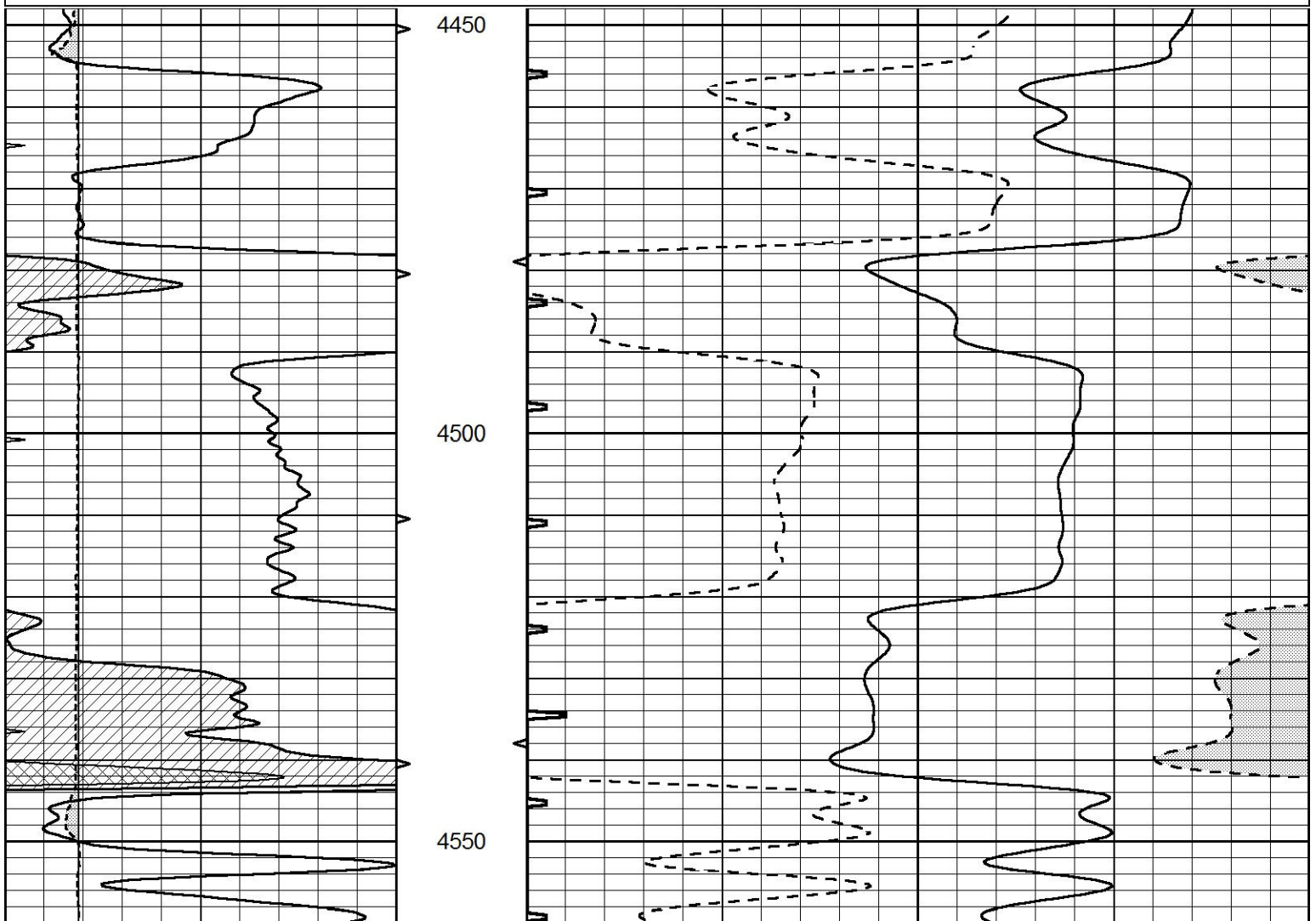
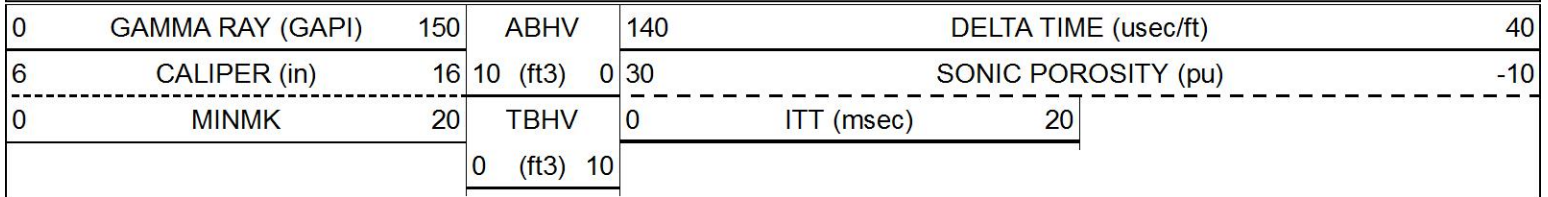


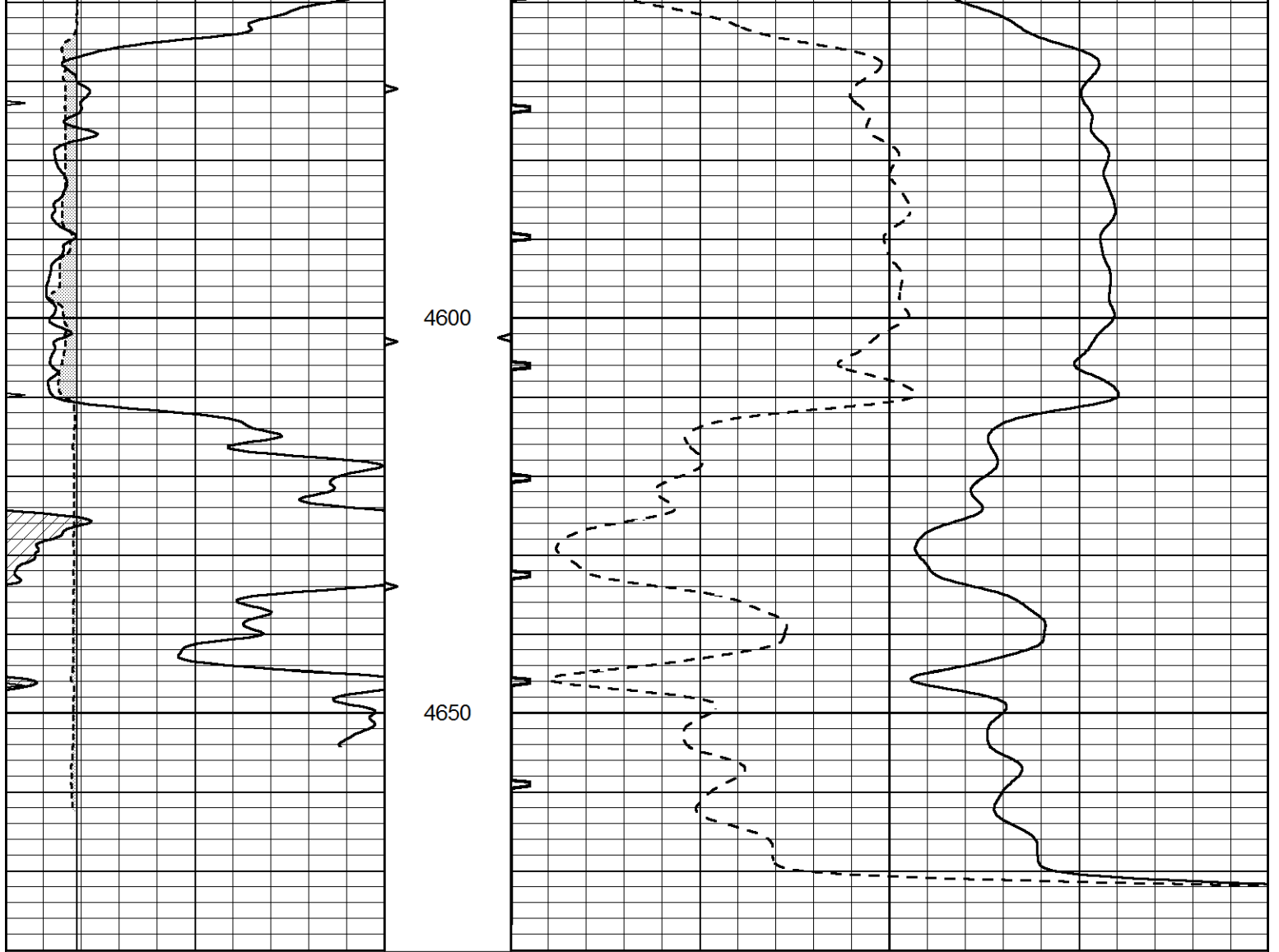




# REPEAT SECTION

Database File 8425pe.db  
 Dataset Pathname pass5.2  
 Presentation Format slt  
 Dataset Creation Mon Mar 25 10:41:52 2024  
 Charted by Depth in Feet scaled 1:240





|   |                  |     |            |     |                      |     |
|---|------------------|-----|------------|-----|----------------------|-----|
| 0 | GAMMA RAY (GAPI) | 150 | ABHV       | 140 | DELTA TIME (usec/ft) | 40  |
| 6 | CALIPER (in)     | 16  | 10 (ft3) 0 | 30  | SONIC POROSITY (pu)  | -10 |
| 0 | MINMK            | 20  | TBHV       | 0   | ITT (msec)           | 20  |
|   |                  |     | 0 (ft3) 10 |     |                      |     |